

OCTOBER 1992  
VOLUME 34  
NUMBER 10

# STORM DATA

AND UNUSUAL WEATHER PHENOMENA  
WITH LATE REPORTS AND CORRECTIONS



**noaa**

NATIONAL OCEANIC AND  
ATMOSPHERIC ADMINISTRATION

NATIONAL ENVIRONMENTAL SATELLITE,  
DATA, AND INFORMATION SERVICE

NATIONAL CLIMATIC DATA CENTER  
ASHEVILLE, N.C.

Cover: During the morning of October 3rd, several tornadoes struck the Tampa Bay/St. Petersburg area. An aerial photograph shows some of the damage the F3 Pinellas Park tornado caused as it moved through the Beacon Hill subdivision. (Photo courtesy: Brian E. Smith, NSSFC, Kansas City, Missouri.)

## CONTENTS

	Page
Climatic Data of the Month . . . . .	4
Outstanding Storms of the Month . . . . .	8
Storm Data and Unusual Weather Phenomena . . . . .	10
Reference Notes and "F" Scale Definitions . . . . .	55
Storm Summary . . . . .	56

### STORM DATA

(ISSN 0039-1972)

National Climatic Data Center

Editor: Grant W. Goodge

Publication Staff: William Angel, Greg Hammer, Jay Hollifield, and Sharon Weaver

STORM DATA is prepared, funded, and distributed by the National Oceanic and Atmospheric Administration (NOAA). The Outstanding Storms of the Month section is prepared by the Data Operations Branch of the National Climatic Data Center.

The Storm Data and Unusual Weather Phenomena narratives and Hurricane/Tropical Storm summaries are prepared by the National Weather Service. Monthly and annual statistics and summaries of tornado and lightning events resulting in deaths, injuries, and damage are compiled by cooperative efforts between the National Climatic Data Center and the National Severe Storms Forecast Center.

STORM DATA contains all confirmed information on storms available to our staff at the time of publication. However, due to difficulties inherent in the collection of this type of data, it is not all-inclusive. Late reports and corrections are printed in each edition.

Maps of the National Weather Service Forecast Zones which are used in the Storm Data and Unusual Weather Phenomena section will be printed in all editions.

Except for limited editing to correct grammatical errors, materials submitted are generally published as received.

Subscription, pricing, and ordering information is available from:

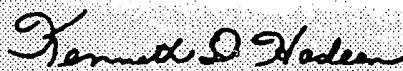
National Climatic Data Center  
37 Battery Park Avenue  
Asheville, NC 28801-2733  
(704) 271-4800 or (704) CLIMATE

The editor of STORM DATA solicits your help in acquiring photographs (prints or slides; black and white, or color), maps, clippings, etc. of significant or unusual weather events (past or present). These could be for use in the "Outstanding Storms of the Month" or "Et Cetera" sections of STORM DATA. We request our subscribers or other interested persons to mail such items to:

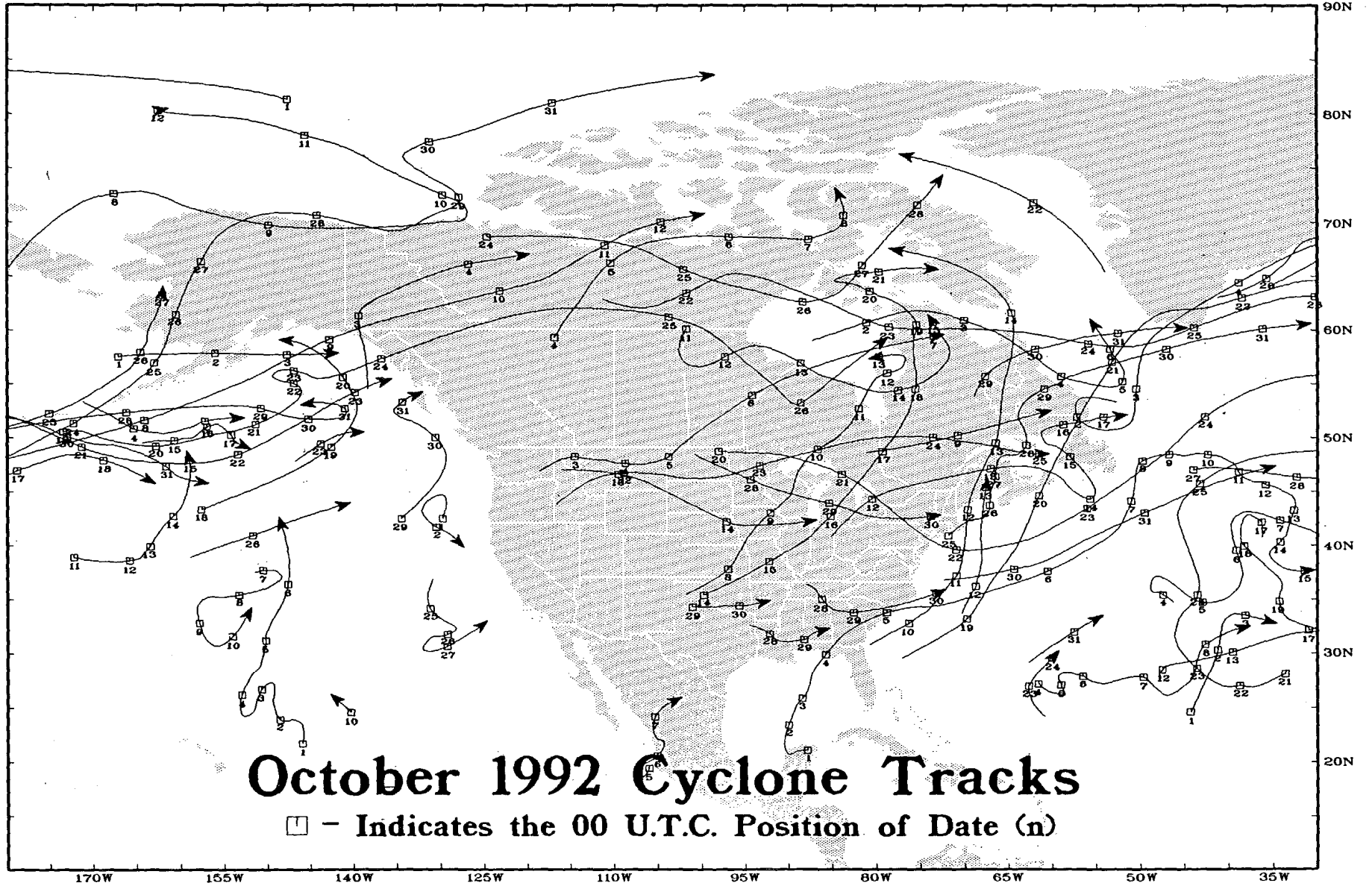
Grant W. Goodge  
National Climatic Data Center  
37 Battery Park Avenue  
Asheville, NC 28801-2733

Any such items received by the editor will be for use in STORM DATA only. Any other use will be with the permission of the owner of said items. Materials submitted will be returned if requested in the original submission.

"I certify that this is an official publication of the National Oceanic and Atmospheric Administration and is compiled from information received at the National Climatic Data Center, Asheville, North Carolina 28801-2733."



Director,  
National Climatic Data Center



# CLIMATIC DATA OF THE MONTH

## PRECIPITATION AND TEMPERATURE ANOMALIES - OCTOBER 1992

Table 1 lists the 98-year temperature and precipitation rankings for the nine climatically homogeneous regions in the United States outlined below in Figure 1.

Areally averaged mean monthly temperatures across the nation ranked October 1992 as the 42nd warmest October on record. The overall monthly weather pattern featured a ridge in the West and a trough in the East. This permitted areas from the lower Mississippi River Valley to the Pacific Ocean to experience above normal temperatures. Some areas were as much as 5°F above normal. Regionally, it was the 11th warmest October since 1895 in the West and the 7th warmest in the Southwest. Conversely, the eastern half of the country had mean monthly temperature departures as great as -5°F. It was the 10th coolest October for the Northeast region. Temperatures in Hawaii were seasonable except for Hilo where the monthly departure was +3°F. Meanwhile, most stations in Alaska recorded below or much below normal monthly temperatures.

Nationally, October 1992 was the 25th driest October since 1895. Below normal precipitation occurred in the High Plains, western Cornbelt, southern Great Plains, Mississippi River delta, south Florida, Ohio River Valley, and New England. In contrast, portions of California's central valley and the Lake Meade area of Arizona and Nevada received more than four times their normal monthly precipitation. Central Alaska and the northern Hawaiian Islands experienced above normal precipitation. However, both Point Barrow, Alaska and Hilo, Hawaii recorded only a third of their normal October precipitation.

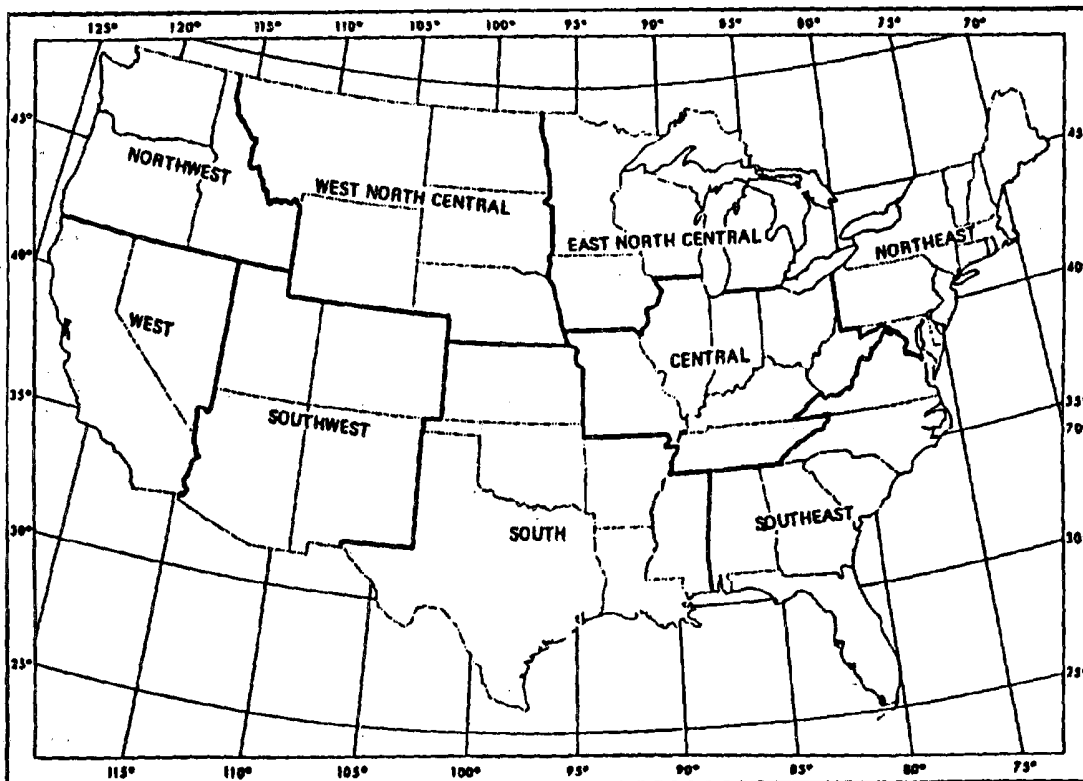
**TABLE 1. TEMPERATURE AND PRECIPITATION RANKINGS FOR OCTOBER 1992, BASED ON THE PERIOD 1895-1992.**

1 = DRIEST, 98 = WETTEST; 1 = COLDEST, 98 = HOTTEST.

REGION	PRECIPITATION	TEMPERATURE
Northeast	31	10
East North Central	30	32
Central	20	29
Southeast	61	15
West North Central	34	64
South	19	63
Southwest	57	92
Northwest	38	75
West	64	88
National	25	57

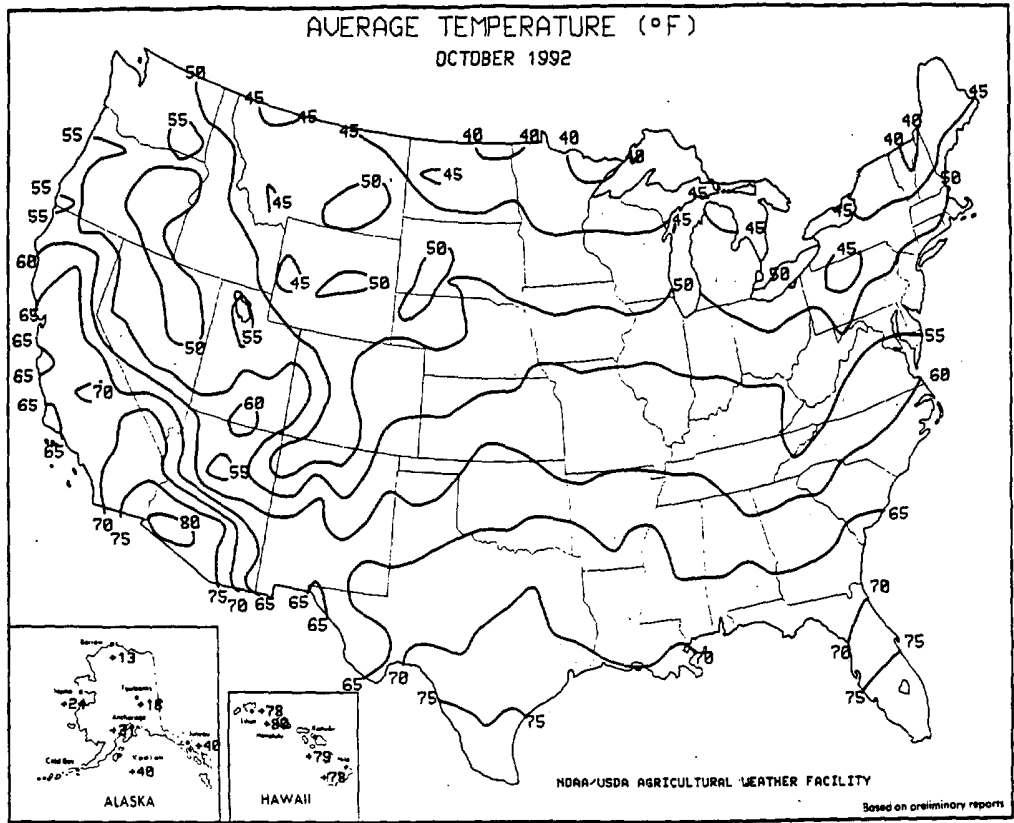
*From National Climatic Data Center*

Fig. 1



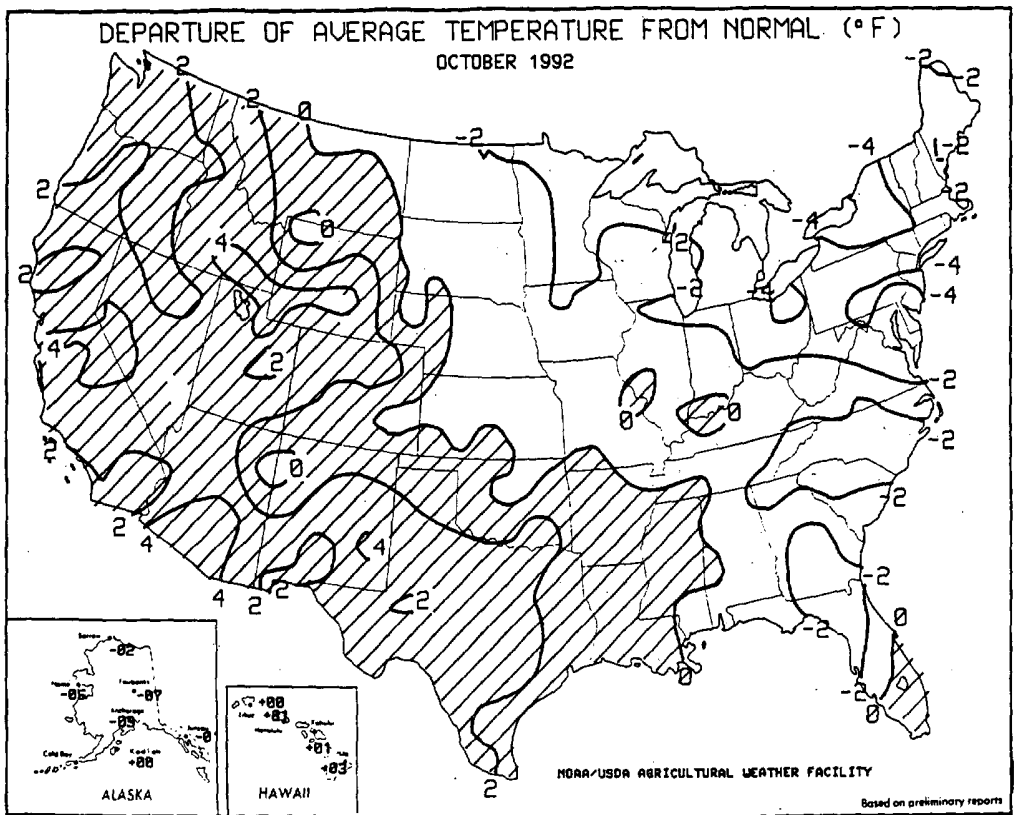
*From National Climatic Data Center*

Fig. 2



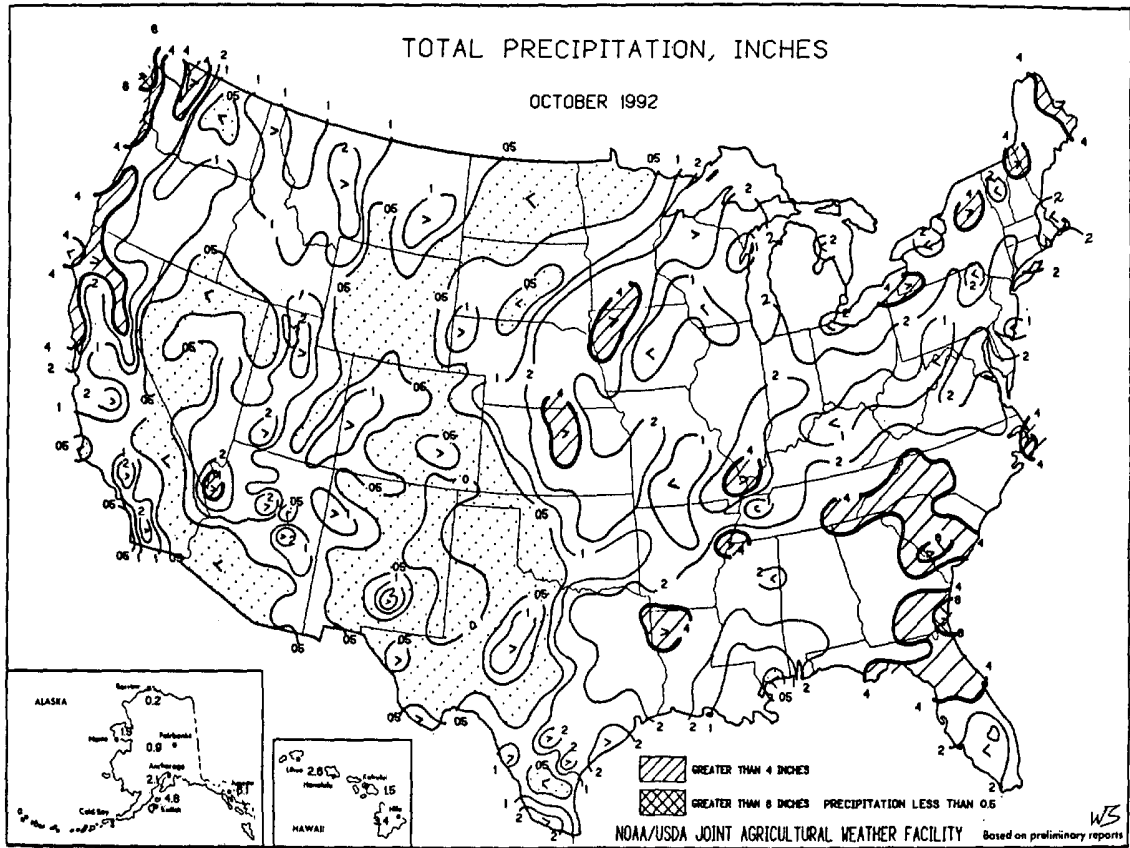
Reprinted from *Weekly Weather and Crop Bulletin* - November 10, 1992

Fig. 3



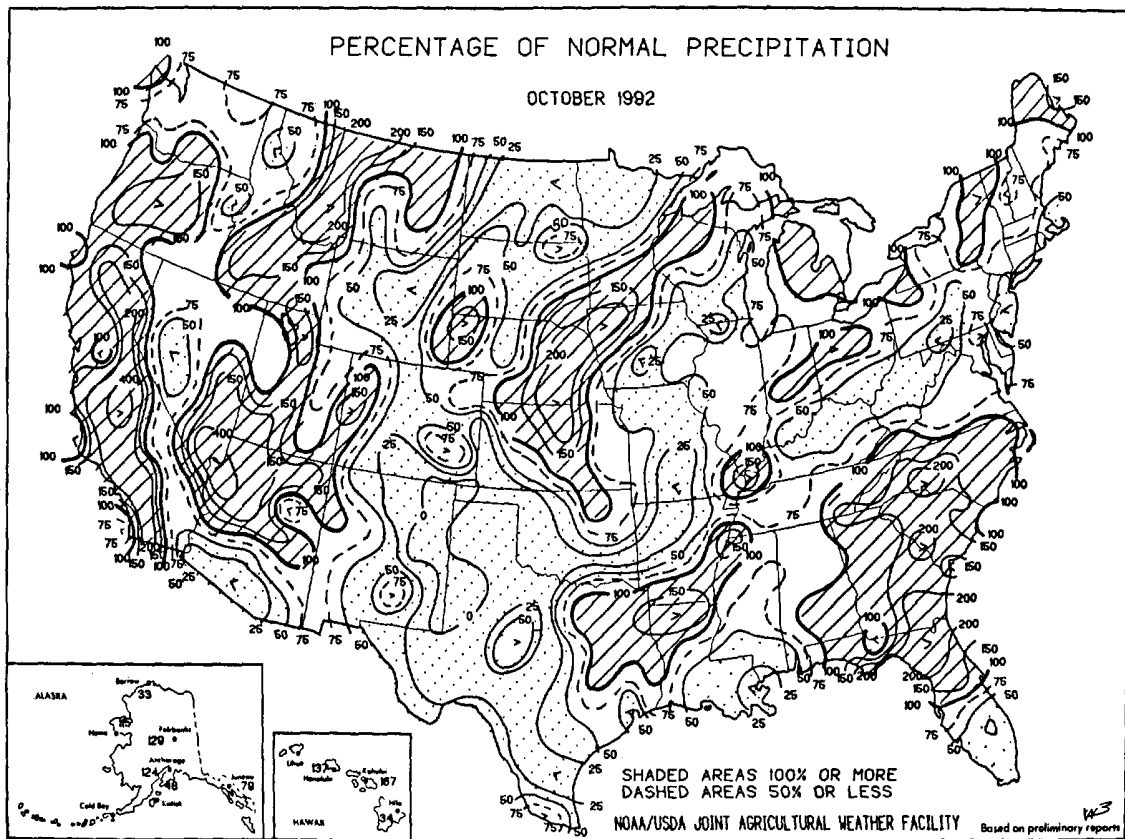
Reprinted from *Weekly Weather and Crop Bulletin* - November 10, 1992

Fig. 4

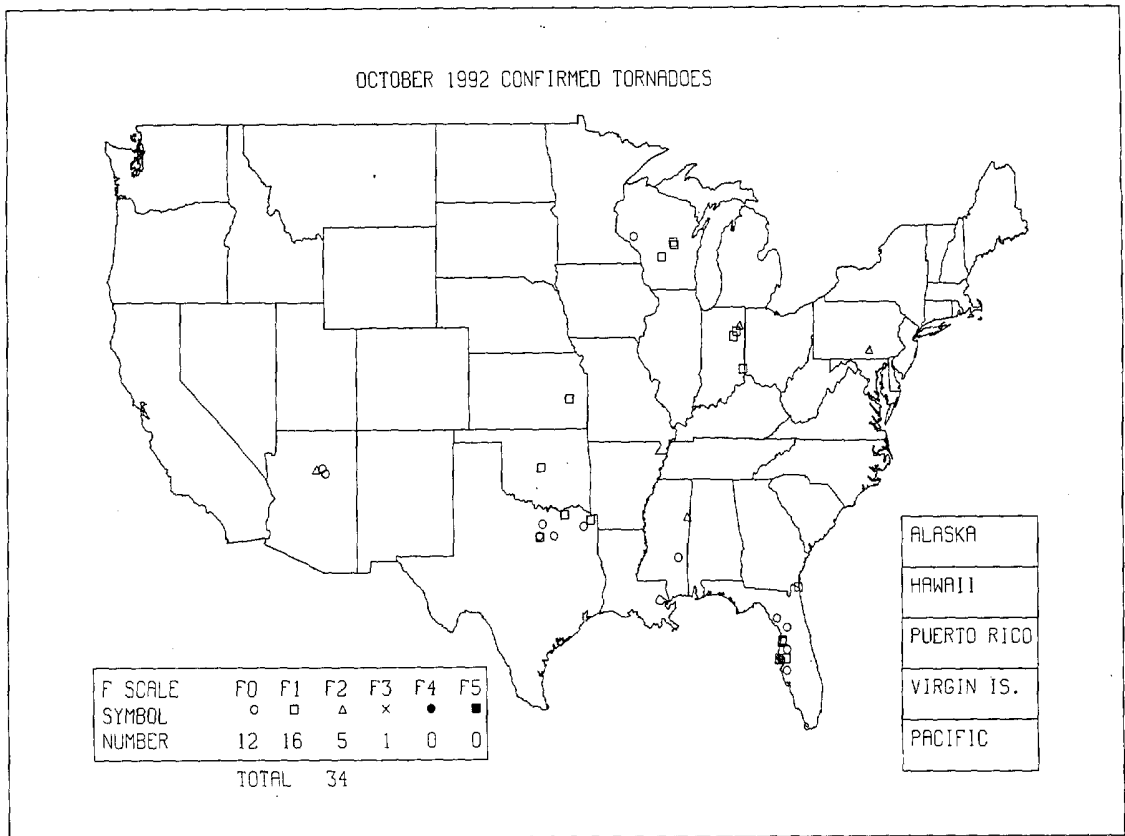


Reprinted from *Weekly Weather and Crop Bulletin* - November 10, 1992

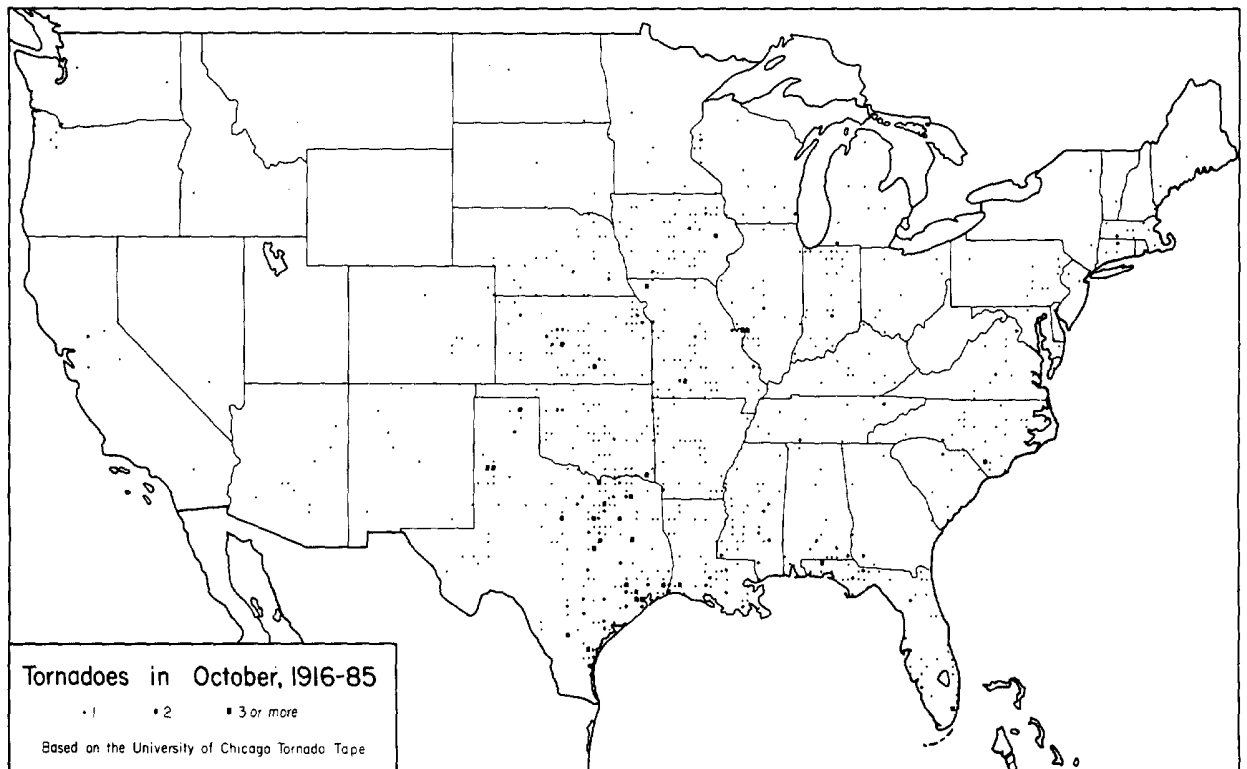
Fig. 5



Reprinted from *Weekly Weather and Crop Bulletin* - November 10, 1992

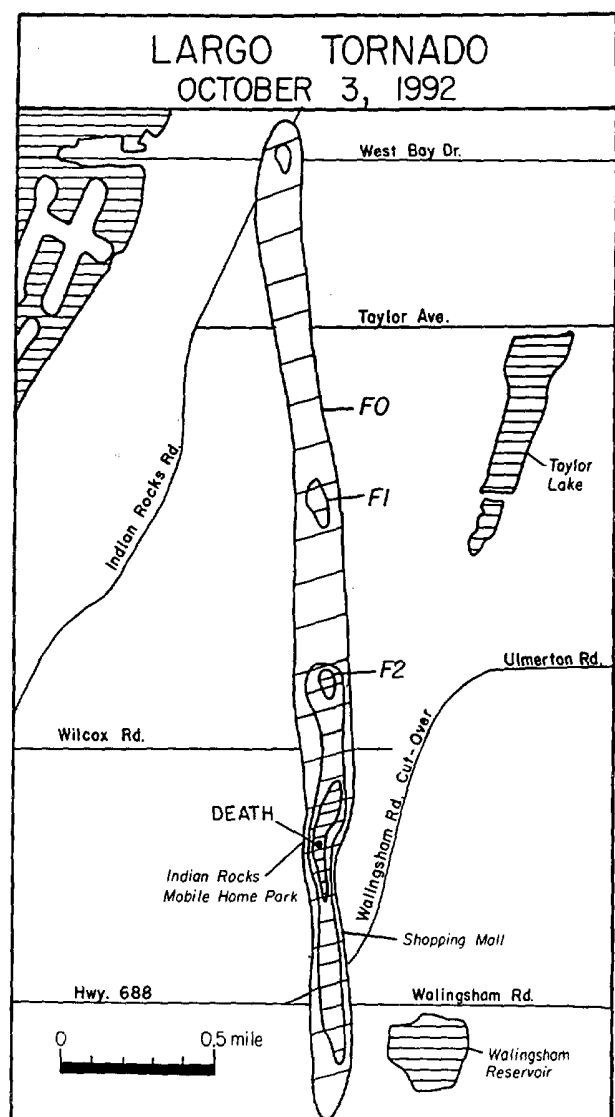
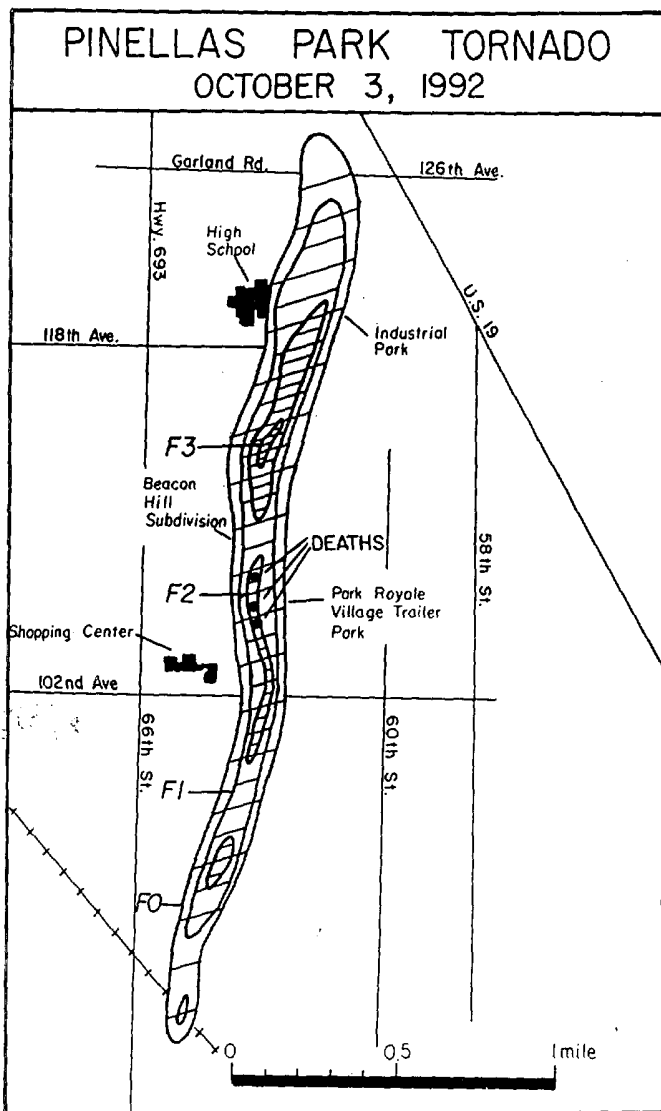


Thirty-four tornadoes were reported in October 1992. Twenty-eight tornadoes were rated as F1 or less, as defined by the Fujita Tornado Scale. The strongest tornado of the month, an F3, occurred in Florida. It killed three people and injured 75 others. (See pages 8 and 9 for further information on these tornadoes.) Nationally, four deaths (all in Florida) and 105 injuries were attributed to the tornadoes of October 1992.



# 1. DEADLY FLORIDA TORNADOES

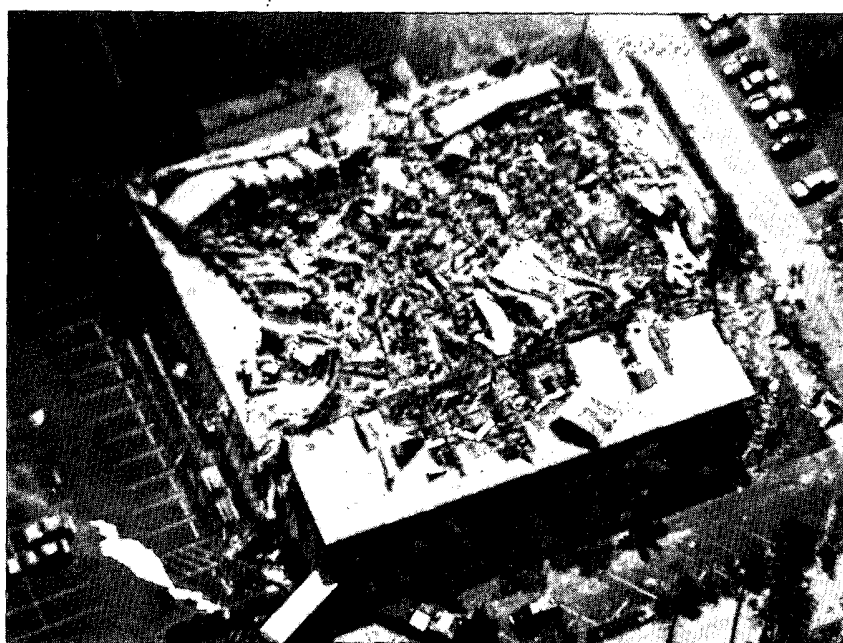
Severe thunderstorms spawned several tornadoes in the Tampa Bay/St. Petersburg area during the morning of October 3, 1992. Of the five tornadoes in the St. Petersburg area, two produced fatalities. The path length of the Largo tornado was 3 miles. This F2 tornado moved over the Indian Rocks mobile home park where a woman was killed when her mobile home was destroyed. The second fatal tornado was named the Pinellas Park tornado. This tornado was rated as an F3 and had a path length of 2.7 miles. It left two persons dead after moving across the Park Royale Village mobile home park. A third person was killed in the Beacon Hill subdivision when her garage roof collapsed. By the morning of the 4th, the state of Florida had sustained about \$100 million dollars in property damage from the severe weather.



ABOVE: MAPPING AND SURVEY BY BRIAN E. SMITH, NSSFC



## PHOTOS OF THE DAMAGE FROM THE PINELLAS PARK TORNADO



**Top(left):** Aerial photo of the Park Royale Village in Pinellas Park. Noted is the area in which a woman was killed as her mobile home was blown into a frame house. **Top(right):** Severely damaged/destroyed mobile homes at the Park Royale Village in Pinellas Park. **Above(left):** Aerial view of damaged homes in the Beacon Run subdivision. **Above:** This concrete block home in Beacon Run subdivision was destroyed. **Left:** A damaged warehouse in Pinellas Park.

*Information and pictures supplied by Brian E. Smith and Richard W. Anthony, NSSFC, Kansas City, Missouri*

## Storm Data and Unusual Weather Phenomena

October 1992

Location	Date	Time Local/ Standard	Path Length (Miles)	Path Width (Yards)	Number of Persons		Estimated Damage		Character of Storm
					Killed	Injured	Property	Crops	
<b>ALABAMA</b>									
<b>Marion County</b> Bear Creek	10	1250CST			0	0	0	0	Hail (1.00)
									Quarter-size hail fell, covering the ground in the Bear Creek area in the northeast portion of the county.
<b>Winston County</b> 3 NE Haleyville	10	1305CST			0	0	0	0	Hail (1.00)
N Double Spgs	10	1310CST			0	0	0	0	Hail (1.75)
									Quarter-size hail fell 3 miles northeast of Haleyville in western Winston County. Golf-ball size hail was also reported by a motorist north of Double Springs.
<b>Lamar County</b>	10	1324CST			0	0	0	0	Hail (0.75)
									Dime-size hail fell 2 miles west of Sulligent.
<b>Lawrence County</b> 8 S Moulton	10	1330CST			0	0	0	0	Hail (1.75)
									Golf-ball size hail fell in the Pine Torch vicinity of the Bankhead National Forest.
<b>Walker County</b> Carbon Hill	10	1400CST			0	0	0	0	Hail (1.75)
									Golf-ball size hail fell in the Carbon Hill area.
<b>Cullman County</b> 2 S Arab	10	1442CST			0	0	0	0	Hail (1.00)
2 S Arab	10	1442CST			0	0	3	0	Thunderstorm Winds
									Nickel to quarter-size hail fell 2 miles south of Arab in Cullman County. Also, thunderstorm winds downed several large trees, and damaged a chicken house and a barn.
<b>Marshall County</b> 1 S Arab	10	1442CST			0	0	0	0	Hail (1.00)
									Nickel to quarter-size hail fell in the Arab vicinity.
<b>Blount County</b> 4 N Summit	10	1450CST			0	0	0	0	Hail (1.00)
	10	1450CST			0	0	3	0	Thunderstorm Winds
									Severe thunderstorm winds destroyed a chicken house and shed in the Strawberry Community. Quarter-size hail was also reported.
<b>Pickens County</b> 4 S Reform	10	1610CST			0	0	0	0	Hail (0.75)
4 S Reform	10	1610CST			0	0	?	0	Thunderstorm Winds
5 S Reform	10	1630CST			0	0	0	0	Hail (0.75)
5 S Reform	10	1630CST			0	0	?	0	Thunderstorm Winds
									A severe thunderstorm moved southeast across the county from about 4:55 p.m. to 5:35 p.m. Thunderstorm winds downed large tree limbs and power lines between Carrolton and Reform. It damaged a barn and several houses in the area. Also, marble to dime-size hail fell covering the ground up to two inches deep.
<b>Cullman County</b>	10	1730CST			0	0	0	0	Hail (0.75)
									Dime-size hail was reported south of the city of Cullman.
<b>Baldwin County</b> 2 E Mobile	26	0740CST			1	2	5	0	Fog
									Patchy dense fog resulted in thirteen separate wrecks involving 40 cars on Interstate 10, 2 miles east of Mobile. Two people were injured in accidents and one man was killed. The man was killed after he got out of his wrecked car, lost his balance, fell from the elevated highway to another roadway below where he was struck by two cars. (M400)

## Storm Data and Unusual Weather Phenomena

October 1992

Location	Date	Time Local/ Standard	Path Length (Miles)	Path Width (Yards)	Number of Persons		Estimated Damage		Character of Storm
					Killed	Injured	Property	Crops	
<b>ARIZONA</b>									
Pinal County Arizona City	23	1730MST			0	0	4	0	Thunderstorm Winds
									Power poles were blown over along a three-quarter mile area. A modular clubhouse was demolished at the Eloy-Tohono Golf Course. Hail and heavy rain accompanied the winds.
Mohave County Lake Havasu City	23	2210MST			0	0	?	0	Hail (1.75)
									Golf ball-size hail was reported in town.
10 N Lake Havasu City	23	2310MST			0	0	?	0	Hail (1.75)
									Golf ball-size hail was reported near Interstate 40.
Maricopa County Fountain Hills	24	1415MST			0	0	?	0	Hail (1.75)
Phoenix	24	1443MST			0	0	0	0	Hail (0.75)
Coconino County Pulliam Airport	24	1205MST			0	0	0	0	Hail (1.00)
Flagstaff	24	1443MST			0	0	?	0	Hail (1.75)
15 NNE Flagstaff	24	1455MST	5.5	150-	0	0	4	0	Tornado(F2)
		1525MST		200					
									Approximately 700 large ponderosa pine trees were snapped and uprooted by a tornado that moved through Sunset Crater National Monument. About 260 acres of timber were destroyed.
Yavapai County Prescott	24	1510MST			0	0	?	0	Hail (1.50)
Coconino County 7 NNE Flagstaff	24	1535MST			0	0	0	0	Funnel Cloud
									There were three separate sitings of a funnel cloud which lasted for about fifteen minutes.
Coconino County 2 S Leupp	24	1637MST	0.1- 50-		0	0	0	0	Tornado (F0)
			0.3 100						Sheriff officer observed a tornado over open land picking up dust and dirt.
Coconino County 11 NE Flagstaff	24	1640MST			0	0	0	0	Funnel Cloud
Coconino County 15 NW Leupp	24	1655MST	0.1- 50-		0	0	0	0	Tornado(F0)
			0.2 75						A passing motorist saw a tornado picking up dust an dirt over land.
Coconino County 10 W Winslow	24	1700MST			0	0	0	0	Thunderstorm Winds
									Wind gusts were estimated to 70 mph.
<b>ARKANSAS</b>									
Miller County Ferguson	07	2025CST			0	0	0	0	Hail (1.00)
Miller County 2 SE Texarkana	07	2025CST			0	0	3	0	Thunderstorm Winds (G50)
									Thunderstorm winds knocked down several trees.
Lafayette County 4 NW Lewisville	07	2058CST			0	0	3	0	Thunderstorm Winds
									Thunderstorm winds blew down some trees.

## Storm Data and Unusual Weather Phenomena

October 1992

Location	Date	Time Local/ Standard	Path Length (Miles)	Path Width (Yards)	Number of Persons		Estimated Damage		Character of Storm
					Killed	Injured	Property	Crops	
<b>ARKANSAS Cont'd</b>									
Jefferson County Pine Bluff	10	0930CST			0	0	0	0	Hail (0.75)
Pulaski County 2 NE Pinnacle	10	1005CST			0	0	0	0	Hail (1.75)
Lonoke County 2 NW Cabot	10	1035CST			0	0	0	0	Hail (1.75)
Prairie County Hazen	10	1055CST			0	0	0	0	Hail (0.75)
Lonoke County 3 N Carlisle	10	1110CST			0	0	0	0	Hail (1.00)
Monroe County 1 SW Brinkley	10	1130CST			0	0	0	0	Hail (0.75)
Washington County 3 N Devils Den	15	2108CST			0	0	0	0	Hail (0.75)
Clark County Okolona	31	1800CST			0	0	0	0	Hail (0.75)
Benton County Siloam Springs	31	2103CST			0	0	0	0	Hail (1.75)
Benton County Cave Springs	31	2127CST			0	0	0	0	Hail (0.75)
Washington County Tontitown	31	2136CST			0	0	0	0	Hail (0.75)
Benton County Rogers	31	2147CST			0	0	0	0	Hail (0.75)
Washington County Springdale	31	2147CST			0	0	0	0	Hail (0.75)
Newton County 7 S Jasper	31	2220CST			0	0	0	0	Hail (0.75)
<b>CALIFORNIA, Northern</b>									
Sierra Nevada CA09-10 NV01-02	29 30	0400PST- 2000PST			0	0	?	0	Heavy Snow
The season's first major snowstorm brought two to three feet of snow to the Northern Sierra and one to two feet to the Southern Sierra.									
San Mateo County 1 E Half Moon Bay	29	1600PST			0	0	5	3	Flash Flood
Two earthen dams on Corinda Los Trancos Creek, constructed to provide water used to control dust, failed after 4 inches of rain fell in a 12 hour period. Water and mud inundated a number of businesses near where the Corinda Los Trancos flows into Pillarcitos Creek.									
Sonoma County Skaggs Island Santa Clara City 10 S SJC	30	1200PST			0	0	0	0	Funnel Clouds
Two funnel clouds were reported by weather spotters and pilots at different locations in the San Francisco Bay area.									
Kings County 2 S Lemoore Avenal Coalinga Lemoore	30	1340PST- 1545PST			0	0	0	0	Funnel Clouds
A total of four funnel clouds were reported by weather spotters in Kings County. These funnels as well as those in the San Francisco Bay area developed in cold unstable air in the wake of a storm system.									

# Storm Data and Unusual Weather Phenomena

October 1992

Location	Date	Time Local/ Standard	Path Length (Miles)	Path Width (Yards)	Number of Persons		Estimated Damage		Character of Storm
					Killed	Injured	Property	Crops	
<b>CALIFORNIA, Southern</b>									
CAZ011-012	19	0445PST			0	24	4	0	Dense Fog
	Dense fog lowered visibilities to one-quarter of a mile or less, in many valley areas of southern California. The dense fog set off a chain-reaction pile up on Interstate 15, near Rancho Cucamonga. Thirty cars and a tractor-trailer rig smashed into one another. The highway was closed from 0800PST to 1815PST.								
CAZALL	23- 24	0420PST			0	0	3	0	Thunderstorm
	An upper low off the southern California coast, caused widespread thunderstorms across the area. The thunderstorms produced some locally heavy rain, hail and gusty winds. Almost, 0.50 inch of rain fell in the northern San Fernando Valley in Los Angeles during a thunderstorm. About, 150,000 customers loss power as a result of lightning strikes.								
Imperial County Imperial	23	0029PST			0	0	0	?	Hail (0.75)
	Strong thunderstorms with locally heavy rain, hail and gusty winds, hit the Imperial area. Slightly more than one inch of rain fell during the storm.								
Eastern San Bernardino County Needles	23	1035PST			0	0	?	0	Thunderstorm Winds (G40)
	Strong thunderstorms with locally heavy rain, hail and gusty winds hit the Needles area.								
San Bernardino County Twenty Nine Palm	24	1445PST			0	0	0	0	Flash Flood
	Strong thunderstorms along with heavy rain caused street and small stream flooding. Heavy rain also hit nearby mountains and other desert areas.								
Santa Barbara County 15 SW Gaviota	29	0621PST			0	0	0	0	Waterspout
	Dissipating waterspout reported by aircraft.								
CAZALL	29- 30	1700PST			0	0	?	0	Rain/Snow
	The first significant winter storm of the season moved through southern California. Most areas had from 0.25 to 0.75 inches of rain, with some inland valleys receiving from one to 1.50 inches. The mountains had from two to five inches of rain. Snow fell at the higher elevations. The rain caused many traffic accidents and power outages.								
<b>COLORADO</b>									
Crowley County 28 WNW La Junta	21	1430MST			0	0	4	?	Thunderstorm Winds
	Strong thunderstorm winds ripped the roof off a shop near Olney Springs in extreme southwestern Crowley county. A car near the shop was also badly damaged when the roof landed on it. No one injured.								
COZ004-008 Central and San Juan Mountains	30- 31	1200MST- 2400MST			0	0	?	?	Heavy Snow
	The first major winter storm of the season struck on Halloween, bringing up to two feet of snow to the southwest and central mountains of Colorado. Being early season, only a couple of reports were received, including 18 inches at Columbine Pass west of Montrose and two feet on the Grand Mesa east of Grand Junction.								
<b>CONNECTICUT</b>									
	None reported.								

# Storm Data and Unusual Weather Phenomena

October 1992

Location	Date	Time Local/ Standard	Path Length (Miles)	Path Width (Yards)	Number of Persons		Estimated Damage		Character of Storm
					Killed	Injured	Property	Crops	

## DELAWARE

None reported.

## FLORIDA

Monroe County  
5 S Key West

01 1135EST 0 0 0 0 Waterspout

A waterspout was sighted 5 miles south of Key West.

Monroe County  
8 SE Key West

01 1530EST 0 0 0 0 Waterspout

A waterspout was sighted 8 miles southeast of Key West.

Monroe County  
4 NW Key West

02 0800EST 0 0 0 0 Waterspout

A waterspout was sighted 4 miles northwest of Key West.

FLZ004 > 006-010-018  
Charlotte, Dixie,  
Franklin, Hernando,  
Hillsborough, Lee,  
Levy, Jefferson,  
Manatee, Pasco,  
Pinellas, Sarasota,  
Taylor, Wakulla Cos.

03 0200EST-  
04 2000EST 0 0 5 0 Coastal flooding

Strong winds from a low in the eastern Gulf of Mexico, combined with high astronomical tides, to cause coastal flooding of roads and low-lying areas and moderate to major beach erosion in some areas.

FLZ007 > 009  
Alachua, Baker,  
Bradford, Clay,  
Columbia, Duval,  
Nassau, St. Johns,  
Union Cos.

03 0900EST-  
04 1400EST 0 0 6 ? Flooding

Twenty-four to 36 hours of rainfall produced moderate to severe flooding. Many sections of Jacksonville were under water by the evening of the 3rd or early on the 4th. Elsewhere bridges were under water or washed out, homes and roads were flooded, and many people were evacuated from near swollen streams.

Pinellas County  
15 WSW Tampa

03 0940EST 3.0 200 1 ? 6 0 Tornado (F2)

A tornado formed south of Florida U.S Highway #688 west of Walingsham Reservoir in Largo. It knocked down a few trees, then damaged fences and poles near a school sports facility. Continuing northward, it damaged roofs of several buildings in a shopping center. The storm did severe damage to many mobile homes in the Indian Rocks mobile home park where an elderly woman was killed as her mobile home was demolished. It then moved over a subdivision where it damaged roofs and walls of homes. It weakened considerably while moving north, knocking down trees and ripping shingles off roofs. The tornado damaged the roofs of a fast-food restaurant and a hotel before dissipating. (F80M)

Pinellas County  
18 SW Tampa

03 1028EST 1.5 300 0 0 4 0 Waterspout  
Tornado (F1)

A waterspout formed over the Gulf of Mexico and moved inland about 1/2 mile south of the Treasure Island Causeway. It severely damaged the roof of an apartment/condo complex. It moved across the Isle of Palms damaging roof tiles and shingles and uprooting trees, then weakened as it moved out over Boca Ciega Bay.

Pinellas County  
13 SW Tampa

03 1030EST 2.6 500 3 75 7 0 Tornado (F3)

# Storm Data and Unusual Weather Phenomena

October 1992

Location	Date	Time Local/ Standard	Path Length (Miles)	Path Width (Yards)	Number of Persons Killed	Injured	Estimated Damage Property	Crops	Character of Storm
----------	------	----------------------------	---------------------------	--------------------------	--------------------------------	---------	---------------------------------	-------	--------------------

## FLORIDA Cont'd

A tornado formed near the intersection of Florida U.S. Highway #693 and the Seaboard Coast Line railroad and toppled trees south of the tracks. It moved north northeast and did severe roof and wall damage to an apartment complex. Debris from the apartment was blown across the street into a park. Numerous trees were uprooted or broken in the park. It continued north destroying a mobile home and damaging a greenhouse. It then blew roofs off several houses and collapsed some second-story walls. The tornado then strengthened and moved across the Point Royale Village mobile home park. Numerous mobile homes were blown apart. Two people were killed as their mobile homes disintegrated. The tornado then moved across the Beacon Run subdivision where it blew the roofs off numerous homes, and many suffered wall damage. One woman was killed by falling debris as her garage roof collapsed on her. The tornado continued north and caused considerable damage to other homes, then damaged the roof and walls of an industrial park building before dissipating. (F72M)(F63M)(F34P)

<b>Pinellas County Clearwater</b>	03	1040EST			0	0	0	0	Thunderstorm Winds
Strong downburst winds knocked down trees in Clearwater.									
<b>Pasco County 13 NW Tampa</b>	03	1110EST			0	0	0	0	Thunderstorm Winds (58)
A thunderstorm wind gust to 67 mph was recorded at the Tampa Executive Airport.									
<b>Hillsborough County NW Part</b>	03	1120EST	2.0	250	0	2	4	0	Tornado (F1)
A tornado formed near the Hillsborough/Pinellas county line two miles south of Tarpon Road. It damaged several mobile homes, then toppled trees north of the mobile home area. A few outbuildings and several more mobile homes were damaged before the storm dissipated over Tarpon Road.									
<b>Pasco County 22 NE Tampa</b>	03	1132EST	0.5	500	0	0	3	0	Tornado (F0)
A small tornado touched down in Moon Lake, primarily downing trees mainly south of the residential area.									
<b>Citrus County SW Part</b>	03	1135EST			0	0	3	0	Thunderstorm Winds
Strong thunderstorm winds blew the porch off a house.									
<b>Pasco County Shady Hills</b>	03	1148EST			0	0	4	0	Thunderstorm Winds
Strong thunderstorm winds knocked down numerous trees and power lines.									
<b>Hernando County 38 N Tampa</b>	03	1207EST-							
	03	1218EST	0.4	80	0	0	4	0	Tornado (F1)
A tornado touched down along Florida 50 north of Spring Hill. It tore the roofs off a blood bank and a nursing home and knocked down trees before dissipating.									
<b>Pasco County Green Key</b>	03	1215EST			0	0	0	0	Waterspout
A waterspout was sighted off Green Key.									
<b>Hernando County 34 N Tampa</b>	03	1220EST-							
	03	1230EST	0.4	80	0	0	5	0	Tornado (F1)
A tornado tore the roofs off three homes and a church, and tore the porch off another home.									
<b>Citrus County 48 N Tampa</b>	03	1308EST			0	0	3	0	Thunderstorm Winds

# Storm Data and Unusual Weather Phenomena

October 1992

Location	Date	Time Local/ Standard	Path Length (Miles)	Path Width (Yards)	Number of Persons	Estimated Damage	Character of Storm	
					Killed	Injured	Property	Crops

## FLORIDA Cont'd

Strong thunderstorm winds destroyed a shed and downed numerous trees at Homosassa.

Sumter County NW Part	03	1355EST			0	0	2	0	Thunderstorm Winds
--------------------------	----	---------	--	--	---	---	---	---	--------------------

Strong thunderstorm winds downed a power pole and some trees, and tore a hole in a porch.

Marion County 7 WSW Ocala	03	1400EST	short		0	0	0	0	Tornado (F0)
------------------------------	----	---------	-------	--	---	---	---	---	--------------

A small tornado touched down briefly near Florida Hwy #200 and Interstate 75 about 7 miles west southwest of Ocala. No damage was reported.

Citrus County 51 SSW Gainesville	03	1440EST			0	0	3	0	Thunderstorm Winds
-------------------------------------	----	---------	--	--	---	---	---	---	--------------------

Strong downburst winds destroyed two sheds and knocked down trees near Lecanto.

Citrus County 50 SSW Gainesville	03	1451EST			0	0	4	0	Thunderstorm Winds
-------------------------------------	----	---------	--	--	---	---	---	---	--------------------

Strong thunderstorm winds damaged the roofs of two businesses in Crystal River.

Levy County Chiefland	03	1740EST	short		0	0	4	0	Tornado (F0)
--------------------------	----	---------	-------	--	---	---	---	---	--------------

A small tornado knocked down trees and blew a utility building into another structure south of Chiefland.

Manatee County Longboat Key	03	2240EST	short		0	0	3	0	Waterspout Tornado (F0)
--------------------------------	----	---------	-------	--	---	---	---	---	----------------------------

A waterspout moved over Longboat Key knocking down trees and power lines.

Monroe County 5 S Key West	04	1503EST			0	0	0	0	Waterspout
-------------------------------	----	---------	--	--	---	---	---	---	------------

A waterspout was sighted 5 miles south of Key West.

## GEORGIA

Camden County St. Marys	04	0100EST	0.5	100	0	0	5	?	Tornado (F1)
----------------------------	----	---------	-----	-----	---	---	---	---	--------------

A small tornado developed at St. Marys and traveled southwest to northeast for about a mile. The actual damage area was only a half mile long. The tornado touched the ground first near the railroad tracks and caused tree damage and some property damage. The storm lifted, crossed Georgia Highway 40, and struck the St. Marys Airport, where the major damage occurred. Four single-engine aircrafts were damaged and one dual-engine plane was totalled. No damage occurred to nearby buildings. The tornado lifted again and touched about a block northeast of the airport. In this area, trees were downed and roofs were damaged. Two storage buildings and a trailer were destroyed. The strongest winds appeared to have occurred over a block-wide area in this vicinity. Over the entire path, damage was spotty and irregular. Power outages developed over the area.

Camden County St. Marys Kingsland	04	0130EST-			0	0	5	?	Flash Flood
Glynn County Brunswick Jekyll Island	04	0355EST			0	0	5	?	Flash Flood

Camden County St. Marys Kingsland	04	0130EST-			0	0	5	?	Flash Flood
Glynn County Brunswick Jekyll Island	04	0355EST			0	0	5	?	Flash Flood

Copious amounts of rain fell over Camden and Glynn Counties and caused flash floods, considerable damages, and beach erosion. By 0143 EST, major street flooding developed in Brunswick and at St. Marys. At St. Marys, numerous apartment buildings, homes, roads and businesses were flooded when water rose over a foot. By 0352 EST, water had risen to three feet in some areas of Glynn County, especially at St. Simons Island and Jekyll Island. Businesses and



# Storm Data and Unusual Weather Phenomena

October 1992

Location	Date	Time Local/ Standard	Path Length (Miles)	Path Width (Yards)	Number of Persons Killed	Injured	Estimated Damage Property	Crops	Character of Storm
----------	------	----------------------------	---------------------------	--------------------------	--------------------------------	---------	---------------------------------	-------	--------------------

## GEORGIA Cont'd

homes were inundated. Extensive flooding developed from Brunswick south to Kingsland and St. Marys, including St. Simons Island and Jekyll Island. In Camden County, about 50 homes sustained some degree of damage from flooding. Many residents were evacuated from homes near Georgia Highway 40 from Kingland east to St. Marys. A few low-lying areas remained flooded on the 5th.

Camden County St. Marys	04	0230EST			0	0	2	?	Thunderstorm Winds
Mc Intosh County Darien	04	0300EST			0	0	2	?	Thunderstorm Winds
Glynn County Sea Island St. Simons Island	04	0330EST			0	0	2	?	Thunderstorm Winds

Scattered trees were blown down in Glynn and Camden Counties. One road was blocked on Sea Island. Outages developed at Sea Island, St. Simons Island, St. Marys, and Darien, after power lines and one pole were damaged by winds.

Emanuel County Swainsboro Countywide	08	1800EST-			0	0	5	?	Flash Flood
	08	2130EST							
	08	1930EST-							
	08	2130EST							
Burke County Sardis	08	2000EST			0	0	4	?	Flash Flood
Richmond County Augusta	08	2045EST-			0	0	4	?	Flash Flood
	08	2100EST							
Jenkins County Millen Countywide Butts	08	2200EST-			0	0	5	?	Flash Flood
	08	2330EST							
	08	2200EST-							
	08	2330EST							
Screven County Millhaven Countywide	08	2200EST-			0	0	4	?	Flash Flood
	08	2330EST							
	08	2200EST-							
	08	2330EST							
Jenkins County Millen	08	2300EST			1	0	?	?	Flash Flood

After persistent heavy rainfall over southeast Georgia, many roads flooded over a five-county area. Numerous roads were inundated in Emanuel, Richmond, Burke, Jenkins, and Screven Counties. Countless vehicles were damaged during the floods over southeast Georgia. Extensive road damages occurred in Emanuel, Jenkins, and Screven Counties.

In Emanuel County, extensive flooding developed by 1930 EST. Georgia Highway 56 was impassable, along with U.S. Highways 1 and 80. By 2115 EST, several homes around Swainsboro were evacuated after water rose to five feet in some areas. A few homes were moved off their foundations. Several man-made ponds in the county were flooded. Emanuel County Schools officials estimated that \$12,000 in damages occurred at several properties. County officials estimated the cost of materials alone was \$30,000 to repair paved roads. The costs to repair dirt roads was not available.

A side from flooded roadways, Rae's Creek flooded in Richmond County. About 30 to 40 people were voluntarily evacuated from their homes. One school in Augusta was flooded.

In Burke County, flooding developed around Sardis.

In Jenkins County, Georgia Highways #17, #121, and U.S. Highway #25 were among the impassable roads. Water crested near six feet in several parts of Jenkins County. Railroads were damaged in Millen. Numerous cars and about 52 homes in the city and county were damaged by

# Storm Data and Unusual Weather Phenomena

October 1992

Location	Date	Time Local/ Standard	Path Length (Miles)	Path Width (Yards)	Number of Persons Killed Injured	Estimated Damage Property Crops	Character of Storm
----------	------	----------------------------	---------------------------	--------------------------	--	---------------------------------------	--------------------

## GEORGIA Cont'd

flooding. Over 100 people were evacuated, mainly in Millen and Butts. Damage to private property was estimated at \$275,000. Damage to city streets and water meters cost near \$5,000.

A two-week old infant drowned after being swept from her mother into a flood current, near eight feet high, outside their home in Millen. The mother fell into the water with the baby while trying to evacuate a mobile home at Georgia Highway #17. The steps had been swept away. The infant was found at 1215 EST on the 9th, about 40 feet from the home. (F000)

The heaviest rain fell in Screven County. At Millhaven, 8.5 inches of rain fell. Four homes and a few vehicles were damaged by water. Over Screven County, flood damages were concentrated in the area west of U.S. Highway #301. Ponds and spillways had about \$150,000 worth of damages. Roads sustained over \$125,000 in damages.

### Fulton County 9 NNE Atlanta

30	1715EST							4	?	Thunderstorm Winds
----	---------	--	--	--	--	--	--	---	---	--------------------

Scattered trees were downed by strong winds in Atlanta. A few trees caused damage when they fell on several houses and one vehicle. Strong winds tore the roof off a business. About 20,000 customers were left without power during the storm.

## IDAHO

### IDZALL Entire State

01	0000MST-									
31	2400MST							7	8	Drought

Statewide precipitation was about 120 percent of normal during October. The central mountains received much above normal precipitation lowering the PDSI category from "extreme" to "severe". Extreme drought continued in the southern third of the state while the panhandle dropped into the "moderate" drought category. Water storage in the Boise River basin was 7 percent of capacity. The release from Boise's Lucky Peak Dam was cut to 80 cubic feet per second, the lowest winter flow since the 1960s, causing side channels and gravel beds to dry up killing fish eggs. The Idaho State Department of Water Resources warned that six years of continuous drought may have seriously dried out many small dams around the state. Several years of low water levels in reservoirs has allowed rodents to tunnel into both sides of earthen dams. Two-thirds of the irrigation districts and canals in the Boise River basin shut down early in October or delivered reduced amounts of water. The drier conditions allowed a sugar beet virus infection to spread in the Treasure Valley, reducing yields about 10 to 15 percent. The State Division of Financial Management estimated that the 1992 farm proprietors income would be about half of the income received in 1989 and 1990. Drought and wildfires caused Elmore, Owyhee, and Cassia Counties to be designated as federal disaster areas. Farm families in eight other counties of southwestern Idaho were made eligible for low-interest emergency loans.

### IDZ001 Treasure Valley

02	0100MST-									
02	0130MST							5	0	High Winds

A low level southerly "jet stream" ahead of a cold front approaching from Oregon surfaced as a "plow wind" (macroburst) in southwestern Boise near Five Mile and Victory avenues and moved northward in a fairly narrow track 12 miles to Eagle, toppling trees and utility lines. A home and a business were unroofed on Fairview between Five Mile and Cloverdale avenues. Fairview Avenue was closed for several hours pending removal of power lines and debris. A resident in Emmett reported a "roar like a freight train" just before a 50-year old spruce tree was blown over onto her home. The winds came from the direction of the not-too-distant Owyhee Mountains.

### IDZ006 West Central Mountains

12	1400MST-									
13	1800MST							0	0	0
										5 Heat Winds

Strong winds and increasing temperatures associated with the approach of a cold front on the 12th caused a planned 100-acre slashburn 20 miles north of McCall to begin to escape (the slash burning had been in progress since the 8th). Strong winds with the passage of the cold front on the 13th further spread the fire to 600 acres. The jet stream began to develop above the fire on the 12th and intensified on the 13th. Four helicopters and 120 fire fighters battled the blaze.

# Storm Data and Unusual Weather Phenomena

October 1992

Location	Date	Time Local/ Standard	Path Length (Miles)	Path Width (Yards)	Number of Persons Killed	Injured	Estimated Damage Property	Crops	Character of Storm
----------	------	----------------------------	---------------------------	--------------------------	--------------------------------	---------	---------------------------------	-------	--------------------

## IDAHO Cont'd

IDZ001-005-003 Snake River Valley	13	1400MST-							
	13	2000MST			0	0	0	4	Winds

Cold front winds spread at least four separate brush fires to acreages burned between 150 and 300 acres each.

IDZ006-007-010 Central Mountains	29	2200MST-							
	30	1200MST			0	0	0	0	Heavy Snow

Ski resorts reported 12 inches of snow on Sun Valley's Mount Baldy and 12 inches on Brundage Mountain. Lick Creek Summit (northeast of McCall) had 12 inches of snow at 6,000 feet. Galena Lodge in the Sawtooth Mountains at Idaho's highest highway summit measured 10 inches of snow with a water content of 1.07 inches. Stanley received 1 inch and Ketchum accumulated 3 inches. The snow was associated with a relatively warm southerly flow ahead of an approaching cold front.

## ILLINOIS

Cook County Oak Lawn Chicago	14	1345CST			0	2	0	0	Lightning
	14	1600CST			0	3	0	0	Lightning

Two parents were struck by lightning while they waited outside a school to pick up their children. One of the parents, a 44-year-old man, was seriously injured. A short time later three teenage boys were injured by lightning while practicing football at a park on the south side of Chicago.

## INDIANA

Morgan County Morgantown	08	1730EST			0	0	0	3	Thunderstorms Winds
-----------------------------	----	---------	--	--	---	---	---	---	---------------------

Trees were downed and there was some minor crop damage.

Marion County Indianapolis	08	1730EST			0	0	3	0	Thunderstorms Winds
-------------------------------	----	---------	--	--	---	---	---	---	---------------------

A few trees were downed on the east side of Indianapolis. One tree fell on a house.

Madison County 0.5 NW Pendleton Grant and Huntington County 3 NW Van Buren to 4 WNW Warren	08	1822EST			0	0	0	0	Hail (1.00)
	08	1835EST- 1843EST	5.2	20	0	0	5	4	Tornado (F1)

A tornado touched down 3 miles northwest of Van Buren in Grant County, and moved over a path length of 5.2 miles, before lifting 4 miles west-northwest of Warren in Huntington County. The tornado destroyed a barn, garage and truck in Grant County, and two garages and a truck in Huntington County. Also, a house roof was damaged. A number of trees were uprooted or snapped, and there was extensive damage to corn.

Madison County Alexandria Huntington County Markle	08	1837EST			0	0	0	0	Hail (1.00)
	08	1845EST- 1848EST	2.0	20	0	0	5	2	Tornado (F1)

A tornado touched down just south of Markle, and produced a half million dollars of damage as it moved across a 2 mile path through the city of Markle. The tornado produced minor damage to 40 buildings, moderate damage to 6 buildings, and heavy damage to 3 buildings. Numerous trees, limbs, and power lines were blown down. The tornado lifted 1 mile north of Markle.

Allen County Fort Wayne	08	1900EST- 1903EST	2.0	20	0	9	5	0	Tornado (F2)
----------------------------	----	---------------------	-----	----	---	---	---	---	--------------

A tornado touched down just south of the air traffic control tower at the Fort Wayne International Airport, and skipped northeast along a 2 mile path. Nine people sustained minor injuries. The

# Storm Data and Unusual Weather Phenomena

October 1992

Location	Date	Time Local/ Standard	Path Length (Miles)	Path Width (Yards)	Number of Persons		Estimated Damage		Character of Storm
					Killed	Injured	Property	Crops	
<b>INDIANA Cont'd</b>									
	airport was closed for several hours after the windows were blown out of the control tower. Five businesses were damaged at the airport, with the roof blown off or damaged at most. Several cars were overturned. The tornado lifted near the intersection of Airport Drive and the Baer Field Thruway, approximately 1 mile north of the airport.								
Henry County	08	1918EST			0	0	0	0	Thunderstorms Winds
	A few trees were downed between New Castle and New Lisbon.								
Randolph County Winchester	08	1920EST			0	0	4	0	Thunderstorms Winds
	The door was blown in on a feed mill, and the roof and a chute were damaged. Damage to the feed mill was estimated at \$15,000. Trees were also downed.								
Allen County Fort Wayne	08	1930EST			0	4	6	0	Thunderstorms Winds
	A microburst developed on the northeast side of Fort Wayne near the intersection of State Boulevard and Busche Drive, and produced damage over a 2 mile path. Five homes were destroyed, with 11 sustaining major damage, and 87 sustaining minor damage. Four people received minor injuries. The microburst produced damage in the Knolls, Winnebago, and Arlington Park Subdivisions, with winds estimated as high as 125 mph. Total damage was estimated at three-quarters of a million dollars.								
DeKalb County Waterloo	08	1945EST			0	0	5	4	Thunderstorms Winds
	Thunderstorm winds blew down numerous trees and power lines in and north of Waterloo. Two barns, a hog house, and a pump house were destroyed one mile north of Waterloo, with minor structural damage reported in Waterloo. Several cars were damaged by falling trees. For a time, U.S. Route 6 was closed because trees were blocking the road.								
Ripley County Cross Plains	08	1945EST			0	0	4	0	Thunderstorms Winds
	A metal building was destroyed by thunderstorm winds.								
Jay County	08	1950EST			0	0	4	3	Thunderstorms Winds
	Trees and power lines were blown down across the county, and a mobile home was overturned near Portland.								
Franklin County 2.5 ESE Cedar Grove to 0.5 W Scipio	08	1955EST-							
	08	2005EST	5.0	100	0	0	5	3	Tornado (F1)
	The path of the tornado was intermittent. The tornado downed numerous trees and caused damage to both corn and soybeans. A barn was blown down and several out buildings were destroyed. Several houses also sustained minor damage.								
Ripley County Batesville Milan	08	1957EST			0	0	4	0	Thunderstorms Winds
	Trees were downed in Batesville and Milan. Several homes in Milan were damaged.								
Dearborn County 8 N Lawrenceburg	08	2008EST			0	0	0	0	Thunderstorms Winds
	Trees were downed.								
Ohio County Rising Sun	15	1535EST			0	0	0	0	Thunderstorms Winds
	Trees were downed.								

# Storm Data and Unusual Weather Phenomena

October 1992

Location	Date	Time Local/ Standard	Path Length (Miles)	Path Width (Yards)	Number of Persons		Estimated Damage		Character of Storm
					Killed	Injured	Property	Crops	
<b>IOWA</b>									
	None reported.								
<b>KANSAS</b>									
<b>Republic County</b>									
<b>Belleville</b>									
	07	1600CST-							
	08	0030CST			0	0	3	3	Heavy Snow
An early fall snowstorm dumped from seven to ten inches of wet snow across the Belleville and Munden areas. The combination of the heavy snow and high winds behind the storm caused tremendous amounts of tree and power line damage in this area. Approximately 20 power poles were snapped off and some residents were without power for up to 48 hours. Approximately 75 homes in the Belleville area sustained damage from falling trees and branches.									
<b>Cowley County</b>									
<b>2 SW Dexter</b>									
	07	1740CST			0	0	2	0	Thunderstorm Winds (G50)
<b>Cowley County</b>									
<b>8 SW Cambridge</b>									
	07	1741CST			0	0	2	0	Thunderstorm Winds (G50)
<b>Cowley County</b>									
<b>Cambridge</b>									
	07	1745CST			0	0	2	0	Thunderstorm Winds (G50)
<b>Coffey County</b>									
<b>Burlington</b>									
	07	1807CST-							
		1809CST	.5	50	0	0	6	2	Tornado (F1)
A weak tornado, embedded in strong straight line winds, touched down on the south edge of Burlington just north of the Sherwood Cabinet Company. The tornado was up and down as it skipped north to about the County Courthouse. The most extensive damage was in about a 2 block wide area from between 5th street and 8th street north to Niagara street. Rainbolts Bait Shop and buildings to the north were the most heavily damaged. A total of about 25 buildings were damaged in Burlington. Other damage in the city, and isolated damage in the southern part of the county was believed to be caused by the strong straight line winds.									
<b>Coffey County</b>									
<b>4 NE Burlington</b>									
	07	1820CST			0	0	3	0	Thunderstorm Winds (G52)
A wind gust to at least 60 mph was clocked at the Wolf Creek Nuclear Power plant.									
<b>Greenwood County</b>									
<b>Eureka</b>									
	07	1830CST			0	0	4	0	Thunderstorm Winds (G50)
<b>Greenwood County</b>									
<b>5 ESE Eureka</b>									
	07	1835CST			0	0	3	0	Thunderstorm Winds (G50)
<b>Franklin County</b>									
<b>Williamsburg</b>									
	07	1839CST			0	0	2	0	Thunderstorm Winds (G52)
Winds gusts were up to 60 mph causing little if any damage.									
<b>Franklin County</b>									
<b>Pomona</b>									
	07	1841CST			0	0	3	0	Thunderstorm Winds (G52)
Winds to around 60 mph knocked down large tree limbs and caused minor damage to outbuildings.									
<b>Morris County</b>									
<b>Council Grove</b>									
	07	1845CST			0	0	4	0	Lightning
Lightning hit a cable TV tower damaging equipment and knocking out service for several hours. Electricity was also knocked out to the area.									
<b>Woodson County</b>									
<b>5 WNW Yate Center</b>									
	07	1849CST-							
		1850CST			0	0	2	0	Thunderstorm Winds (G51)

A line of thunderstorms produced widespread winds around 50 mph as it moved across South Central Kansas. Winds increased as a bow echo signature developed on the line from Eastern Cowley County north through Eureka. The storms continued north into Coffey County. Eureka caught the strongest wind and worst damage. The winds hit the east side of town tearing part of the roof off a mobile home, turning over a camper trailer, damaging sheds and ripping shingles.

# Storm Data and Unusual Weather Phenomena

October 1992

Location	Date	Time Local/ Standard	Path Length (Miles)	Path Width (Yards)	Number of Persons Killed	Injured	Estimated Damage Property	Crops	Character of Storm
----------	------	----------------------------	---------------------------	--------------------------	--------------------------------	---------	---------------------------------	-------	--------------------

## KANSAS Cont'd

from several homes. A metal shed was also destroyed at a farm southeast of Eureka. A gust was measured at 59 mph northwest of Yates Center. Damage in Cowley County was generally minor and included: windows out of a business, a porch blown off a house, large trees damaged and power lines down in Cambridge; and roof damage to outbuildings at farms southwest of Dexter and southwest of Cambridge.

Franklin County Centropolis	07	1855CST			0	0	2	0	Thunderstorm Winds (G52)
--------------------------------	----	---------	--	--	---	---	---	---	--------------------------

Winds over 60 mph uprooted trees and caused damage to power lines.

Douglas County Lawrence	07	1914CST			0	0	3	0	Thunderstorm Winds (G52)
----------------------------	----	---------	--	--	---	---	---	---	--------------------------

Winds to around 60 mph knocked down trees, large tree limbs and cut power to some parts of the city.

Leavenworth County South Third County	07	1915CST 1945CST			0	0	4	3	Thunderstorm Winds (G?)
---	----	--------------------	--	--	---	---	---	---	-------------------------

Strong winds stripped the siding and roof off a barn, tore the roof from a trailer and blew down numerous large trees.

Johnson County Gardner	07	1925CST			0	0	0	0	Thunderstorm Winds (G69)
---------------------------	----	---------	--	--	---	---	---	---	--------------------------

A wind of 69 knots was recorded at Johnson County Industrial Airport, but no damaged was reported or observed.

Douglas County Baldwin City	07	1927CST			0	0	3	0	Thunderstorm Winds (G52)
--------------------------------	----	---------	--	--	---	---	---	---	--------------------------

Winds to around 60 mph knocked down trees, large tree limbs and cut power to some parts of the city.

Johnson County 2 SW Olathe	07	1928CST			0	0	0	0	Thunderstorm Winds (G52)
-------------------------------	----	---------	--	--	---	---	---	---	--------------------------

Linn County La Cygne	07	1928CST			0	0	0	0	Thunderstorm Winds (G52)
-------------------------	----	---------	--	--	---	---	---	---	--------------------------

N Central Kansas County KS ZONE 10/11	08	0100CST 1000CST			0	0	3	3	High Winds
--	----	--------------------	--	--	---	---	---	---	------------

Winds in excess of 30 mph across central and north central Kansas caused damage in the Republic county area as well as some tree and power line damage in the Salina area. Gusts at the Concordia weather office reached 58 mph around 5 am.

## KENTUCKY

Washington County	08	2100EST			0	0	3	0	Thunderstorm Winds
-------------------	----	---------	--	--	---	---	---	---	--------------------

A strong thunderstorm downed trees and power lines in Springfield.

Marion County	08	2115EST			0	0	3	0	Thunderstorm Winds
---------------	----	---------	--	--	---	---	---	---	--------------------

Trees and power lines were blown down in Lebanon.

Boone County	15	1545EST			0	0	4	0	Thunderstorm Winds
--------------	----	---------	--	--	---	---	---	---	--------------------

A thunderstorm with 60 mph winds knocked down trees and electrical lines throughout the county. One electrical line fell on a school bus, but no injuries were reported.

## Storm Data and Unusual Weather Phenomena

October 1992

Location	Date	Time Local/ Standard	Path Length (Miles)	Path Width (Yards)	Number of Persons		Estimated Damage		Character of Storm
					Killed	Injured	Property	Crops	
<b>LOUISIANA</b>									
Morehouse Parish 2 SW Jones	10	1500CST			0	0	3	?	Thunderstorm Winds
W Carroll Parish Oak Grove	10	1510CST			0	0	5	?	Thunderstorm Winds
Oak Grove	10	1528CST			0	0	?	?	Thunderstorm Winds
E Carroll Parish 4 SW Lake Providence	10	1540CST			0	0	?	?	Thunderstorm Winds Hail (0.88)
<p>Scattered thunderstorms moving southeast between 40 to 50 mph blew down numerous trees and power lines 2 miles southwest of Jones where one of the trees fell onto a parked car. In Oak Grove part of the Walmart discount store roof was blown off along with the roof of an automobile showroom. In addition, 3 mobile homes were damaged by straight line winds or fallen trees. Nickle-size hail and numerous trees, power lines were blown down 4 miles southwest of Lake Providence where a nearby home had its roof blown off.</p>									
Ouachita Parish 10 SW Monroe Fondale	10	1648CST			0	0	?	?	Thunderstorm Winds Hail (1.75)
	10	1655CST			0	0	?	?	Thunderstorm Winds Hail (0.88)
Richland Parish 8 S Alto	10	1718CST			0	0	?	?	Thunderstorm Winds Hail (0.75)
Caldwell Parish 2 N Corey	10	1720CST			0	0	?	?	Thunderstorm Winds Hail (1.00)
<p>Scattered thunderstorms moving southeast at 35 mph blew down several trees 10 miles southwest of Monroe and 8 miles south of Alto. Nickle- to golf ball-size hail fell 10 miles southwest of Monroe, in Fondale, 8 miles south of Alto, and 2 miles north of Corey.</p>									
Bossier Parish 2 S Plain Dealing	16	0010CST			0	0	?	?	Thunderstorm Winds Hail (1.00)
7 E Plain Dealing	16	0020CST			0	0	?	?	Thunderstorm Winds
Barksdale AFB	16	0025CST			0	0	?	?	Thunderstorm Winds
Webster Parish 4 N Sarepta	16	0035CST			0	0	?	?	Thunderstorm Winds Hail (1.00)
3 E Cotton Valley	16	0035CST			0	0	?	?	Thunderstorm Winds
<p>A cluster of thunderstorms moving east at 40 mph blew down several trees 7 miles east of Plain Dealing and 3 miles east of Cotton Valley. Windows were blown out of vehicles and a bus was overturned by strong winds at the Barksdale Air Force Base. Quarter-size hail fell 2 miles south of Plain Dealing and 4 miles north of Sarepta.</p>									
E Baton Rouge Parish Baton Rouge	24	0820CST			0	0	5	0	Thunderstorm Winds Lightning
<p>Lightning struck a Baton Rouge home; the resulting fire did an estimated \$100,000 damage.</p>									
Caddo Parish Greenwood	29	1925CST			0	0	?	?	Thunderstorm Winds (G50)
4 W to 8 W	29	1940CST			0	0	4	?	Thunderstorm Winds (G71)
Shreveport	29	1945CST			0	0	?	?	Thunderstorm Winds
Bossier Parish 4 N Bossier City	29	1950CST			0	0	?	?	Thunderstorm Winds Hail (1.00)
Caddo Parish Shreveport	29	1952CST			0	0	?	?	Thunderstorm Winds Hail (1.00)
4 SW Shreveport	29	1958CST			0	0	?	?	Thunderstorm Winds
<p>A thunderstorm moving east-southeast at 30 mph produced 85 mph winds at Greenwood blowing down signs onto a truck stop. Several tractor trailer trucks were blown off Interstate #20 between 4 and 8 miles west of Shreveport. Numerous trees and power lines were blown down 4 miles southwest of Shreveport. One inch hail was reported 4 miles north of Bossier City and in Shreveport.</p>									

# Storm Data and Unusual Weather Phenomena

October 1992

Location	Date	Time Local/ Standard	Path Length (Miles)	Path Width (Yards)	Number of Persons		Estimated Damage		Character of Storm
					Killed	Injured	Property	Crops	

## LOUISIANA Cont'd

Desoto Parish 2 N Keatchie	29	2001CST			0	0	?	?	Thunderstorm Winds (G58)
Bienville Parish 5 S Danville	29	2020CST			0	0	?	?	Thunderstorm Winds Hail (1.00)
Jackson Parish 5 SW Jonesboro	29	2045CST			0	0	?	?	Thunderstorm Winds Hail (0.88)
Winn Parish 10 W Dodson	29	2050CST			0	0	?	?	Thunderstorm Winds

Scattered thunderstorms moving east at 30 mph produced 70 mph winds 2 miles north of Keatchie. Several trees were blown down 10 miles west of Dodson. Nickle- to quarter-size hail fell 5 miles south of Danville and 5 miles southwest of Jonesboro.

## MAINE

MEZ012 Northwest ME	12- 13	2000EST- 0730EST			0	0	?	0	Heavy rain
------------------------	-----------	---------------------	--	--	---	---	---	---	------------

A downpour caused extensive damage at the Norway-Paris Solid Waste Transfer Station on Brown Street. Graveled areas under and around recycling bins were eroded by running rainwater.

## MARYLAND

Montgomery County Damascus	09	2030EST			0	0	0	0	Minor Flood
-------------------------------	----	---------	--	--	---	---	---	---	-------------

Thunderstorms moving across the area dumped 2.7 inches of rain and caused small streams to come out of their banks briefly and some low spots in a few roads were flooded.

Harford County Street	09	2200EST			0	1	0	0	Lightning
--------------------------	----	---------	--	--	---	---	---	---	-----------

A man was injured slightly when a lightning strike near his home caused a power surge while he was using a power tool.

Garrett County	19	0500EST			0	0	0	0	Snow
----------------	----	---------	--	--	---	---	---	---	------

1 to 3 inches of snow fell, the first measurable of the season, and stopped traffic for a while on I-68. Numerous auto accidents were reported.

## DISTRICT OF COLUMBIA

None reported.

## MASSACHUSETTS

Berkshire County Adams and Cheshire	16	2130EST- 2230EST			0	0	?	0	High Winds
---	----	---------------------	--	--	---	---	---	---	------------

A period of high winds blew down large tree limbs.

## MICHIGAN

Kent County Kentwood at 44th & Breton, 5 SSE Grand Rapids	08	1934EST			0	0	0	0	Funnel Cloud
---	----	---------	--	--	---	---	---	---	--------------

The public reported a funnel cloud, but report could not be confirmed by the sheriff, who was on the scene at the time.

Calhoun County Battle Creek	08	1935EST			0	0	0	0	Thunderstorm Windss (G50)
--------------------------------	----	---------	--	--	---	---	---	---	---------------------------

Thunderstorm winds gusted to 58 mph at Kellogg Regional Airport in Battle Creek.



# Storm Data and Unusual Weather Phenomena

October 1992

Location	Date	Time Local/ Standard	Path Length (Miles)	Path Width (Yards)	Number of Persons		Estimated Damage		Character of Storm
					Killed	Injured	Property	Crops	
<b>MICHIGAN Cont'd</b>									
<b>Kent County Myers Lake, 15 NE Grand Rapids</b>	<b>08</b>	<b>1946EST</b>			<b>0</b>	<b>0</b>	<b>4</b>	<b>0</b>	<b>Thunderstorm Windss</b>
									Part of the roof on a home was damaged and a shed was destroyed. The structure was a modular home and did not appear to be constructed as well as an ordinary frame house. The northwest quarter of the roof on the home was torn off and part of the west wall was damaged possibly by flying debris from the shed. The debris was in a fan-shaped arc of about 100 degrees, pointing mostly to the northeast, to a distance of about 750 feet. Some insulation was found in nearby trees and wires. There was no damage to houses on either side. A dead tree near the damaged house was down, pointing to the northeast, and a few trees in a nearby woods were uprooted. Other surrounding trees were not damaged. A 2x4 was found driven about 18 inches into the ground. There was some evidence of light-weight debris blown from north to south and a few shingles to the northwest, otherwise there was no conclusive evidence of twisting motion. The conclusion of both investigators was that the damage was probably caused by straight-line winds.
<b>Calhoun County 2 W Marshall</b>	<b>08</b>	<b>1940EST</b>			<b>0</b>	<b>0</b>	<b>0</b>	<b>0</b>	<b>Hail (1.75)</b>
									Golf-ball size hail was reported near Marshall.
<b>Branch County 10 S Coldwater</b>	<b>08</b>	<b>2000EST</b>			<b>0</b>	<b>0</b>	<b>2</b>	<b>0</b>	<b>Thunderstorm Winds</b>
									Strong thunderstorm winds resulted in numerous downed trees. A roof was damaged by the strong winds, but no details were available on just what was damaged on that roof.
<b>St. Joseph County Sturgis</b>	<b>08</b>	<b>2016EST</b>			<b>0</b>	<b>0</b>	<b>4</b>	<b>0</b>	<b>Thunderstorm Winds</b>
									Strong thunderstorm winds blew down many trees and power lines across the southern part of Sturgis. Some large trees came down close to homes on South Nottowa Road and Rolling Ridge Street. At the one point during the storm, 16,000 homes were without power.
<b>Clinton County Maple Rapids</b>	<b>08</b>	<b>2015EST</b>			<b>0</b>	<b>0</b>	<b>0</b>	<b>0</b>	<b>Thunderstorm Winds</b>
									Several trees were uprooted by thunderstorm winds.
<b>Hillsdale County Litchfield</b>	<b>08</b>	<b>2015EST</b>			<b>0</b>	<b>0</b>	<b>3</b>	<b>0</b>	<b>Thunderstorm Winds</b>
									Strong thunderstorm winds blew down many trees and some powerlines.
<b>Hillsdale County Camden</b>	<b>08</b>	<b>2015EST</b>			<b>0</b>	<b>0</b>	<b>3</b>	<b>0</b>	<b>Thunderstorm Winds</b>
									A spotter reported trees down across roads and scattered power outages. Lightning hit ham radio antenna near Parchment, bringing it to the ground.
<b>St. Joseph County Sturgis</b>	<b>08</b>	<b>2016EST</b>			<b>0</b>	<b>0</b>	<b>4</b>	<b>0</b>	<b>Lightning</b>
									Lightning caused \$8,000 damage to a home at 432 W Lafayette Street. The fire was contained in the attic as 15 firefighters were on the scene for 1 1/2 hours to extinguish the lightning educed fire.
<b>Hillsdale County 9 SSE Hillsdale</b>	<b>08</b>	<b>2030EST</b>			<b>0</b>	<b>0</b>	<b>3</b>	<b>0</b>	<b>Thunderstorm Winds</b>
									Two small barns were destroyed by strong thunderstorm winds. Numerous trees were also downed.
<b>Kalamazoo County Cooper Township 5 N Kalamazoo</b>	<b>08</b>	<b>2030EST</b>			<b>0</b>	<b>0</b>	<b>0</b>	<b>0</b>	<b>Thunderstorm Windss</b>
									Strong thunderstorm winds uprooted trees and downed power lines.

## Storm Data and Unusual Weather Phenomena

October 1992

Location	Date	Time Local/ Standard	Path Length (Miles)	Path Width (Yards)	Number of Persons		Estimated Damage		Character of Storm
					Killed	Injured	Property	Crops	
<b>MICHIGAN Cont'd</b>									
Jackson County Jackson	08	2040EST			0	0	0	0	Hail (1.75)
Golf ball-size hail was reported in the city of Jackson.									
Clare County Harrison	08	2100EST			0	0	3	0	Thunderstorm wind
Strong thunderstorm winds destroyed several trees on the Devils Knob Golf course. Also, on Rodgers Avenue, Mabel Iutzi's garage was moved off its foundation.									
Shiawassee County Near Owosso	08	2100EST			0	0	4	?	Thunderstorm wind
A large silo constructed of concrete and steel was blown over by strong thunderstorm winds.									
Midland County Midland	08	2140EST			0	0	2	0	Thunderstorm wind
Trees 4 to 5-inches-in diameter were blown down in the eastern parts of Midland County (near Airfield and Dawn roads).									
Washtenaw County	08	2155EST			0	0	0	0	Thunderstorm Windss (G52)
Winds gusted up to 60 mph were reported in Saline.									
Genesee County Flint	08	2207EST			0	0	4	0	Thunderstorm Windss (G58)
The National Weather Service at Bishop Airport recorded a wind gust to 67 mph. At least two trees were blown down across streets in Flint. Large tree branches fell on two passing vehicles on the west side of Flint. The storm caused 7500 homes in Genesee County to lose power.									
Oakland County	08	2210EST			0	0	3	0	Thunderstorm Windss (G52)
Winds to 60 mph were reported at Wixom and Rochester. Numerous large tree limbs were blown down and a construction sign were blown down onto highway M-59 near Waterford. Numerous reports of pea-size hail were received.									
Genesee County 2 SW Grand Blanc	08	2221EST			0	0	4	0	Thunderstorm wind
The roof of a house at Cook and Fletcher Roads was heavily damaged by wind. Large amounts of roofing material were blown off, but the frame remained intact. Trees near the house were blown down.									
Tuscola County Near Mayville	08	2248EST			0	0	0	0	Hail (75)
Three-quarter inch hail was reported by a spotter.									
Lapeer County Almont	08	2250EST			0	0	4	0	Thunderstorm Windss
A tree fell on a mobile home in the Almont Trailer Park.									
Lapeer County 2 N Lapeer	08	2253EST			0	0	1	0	Thunderstorm Windss
Several trees were blown down across a few roads 2 miles north of Lapeer.									
Calhoun County Albion	14	0442EST			0	0	4	0	Lightning
The office at the Riverside Cemetery sustained more than \$10,000 damage following a lightning strike early Wednesday morning. Lightning struck an electric service pole on M-99, which started a blaze in the cemetery office. Third shift workers quickly responded, this significantly limited the spread of the fire.									

# Storm Data and Unusual Weather Phenomena

October 1992

Location	Date	Time Local/ Standard	Path Length (Miles)	Path Width (Yards)	Number of Persons Killed Injured	Estimated Damage Property Crops	Character of Storm
----------	------	----------------------------	---------------------------	--------------------------	--	---------------------------------------	--------------------

## MICHIGAN Cont'd

Wayne County  
Garden City

15	1300EST-								
16	0300EST				0	0	0	0	Flood

Heavy rains fell over Southern Lower Michigan from the evening of October 14, through the mid morning hours of October 15th. Rainfall totals, over this area, ranged from one to 1 and 1.50 inches during that time. As a result, the Middle River Rouge, at Garden City, rose above its flood stage of 7.0 feet about 1:00 pm in the afternoon of the 15th. The river continued to flow above flood stage at Garden City until 3:00 am on the morning of the 16th. It crested at 7.13 feet around 8:00 pm on the evening of the 15th, about one tenth of foot above flood stage. No damage was reported as a result of this event.

North Central  
Upper Peninsula

15	2000EST-								
16	1800EST				0	0	0	0	Heavy Snow

Snow began falling over Western Upper Michigan during the late evening hours of Thursday, October 15th and continued to fall for the next 22 hours, finally ending during the evening of Friday, October 16th. Baraga and Marquette Counties had the most from this storm, 8 inches. Houghton and Iron counties had 7 inches, while Gogebic and Ontonagon Counties had 5 inches. During the storm, winds blew out of the north at around 20 mph, gusting occasionally to near 40 mph. This caused considerable drifting of the snow. The combination of strong winds and snow resulted in more than a dozen traffic accidents. Two of these accidents produced some injuries. The highest wind gust was 60 mph at Norway in Dickinson County, which only had 3 inches snow during the storm.

Lenawee County  
Tecumseh

16	0100EST-								
17	0300EST				0	0	0	0	Flood

Rain, accompanied by a few thunderstorms with very heavy rain fell over Southern Lower Michigan from the evening hours of October 14th through the mid morning hours of October 15th. This was followed by a dry period, only to have additional thunderstorms with heavy rain move over the same area during the early morning hours of October 16th. Total for the two events ranged from 1.50 to 2 inches of rain. As a result of this, the River Raisin, at Tecumseh, rose above its flood stage of 9.0 feet about 1:00 am on the morning of the October 16th. The river crested at 9.4 feet above flood stage around 10:00 am on the morning of the 16th, then fell below flood stage by 3:00 am on the morning of October 17th. As with the Garden City event, only minor flooding was reported and no damage was reported as a result of this event.

MIZ-076-079  
West Central  
Upper Peninsula

16	1800EST-								
18	1800EST				0	0	0	0	Heavy Snow

Heavy lake effect snow fell over southern Houghton and northwest Iron counties for the next two days. This increased the total snowfall over southern Houghton and northwest Iron counties from around 7 inches when the synoptic part of the storm ended to 19 inches, by Sunday evening when the lake effect snow ended. The rest of Iron, and Houghton counties, plus Ontonagon and Gogebic counties had only minor additional snowfall from the lake effect part of this storm, generally 1 to 3 inches of snow.

## MINNESOTA

None reported.

## MISSISSIPPI

Union County  
Ingomar  
Chickasaw County  
2 NW Okalona

10	1200CST								
10	1230CST				0	0	0	0	Hail (1.00)
					0	0	0	0	Hail (1.75)

Golf ball-size hail covered the ground.

## Storm Data and Unusual Weather Phenomena

October 1992

Location	Date	Time Local/ Standard	Path Length (Miles)	Path Width (Yards)	Number of Persons		Estimated Damage		Character of Storm
					Killed	Injured	Property	Crops	
<b>MISSISSIPPI Cont'd</b>									
<b>Monroe County</b> Amory	10	1335CST			0	0	2	0	Thunderstorm Winds
	Several trees were blown down by thunderstorm winds.								
<b>Clay County</b> West Point	10	1500CST			0	0	4	0	Thunderstorm Winds
	Three buildings were severely damaged. Numerous trees and power poles and lines were blown down. The local electric company estimated the storm caused \$22,000 in damage.								
<b>Attala County</b> Wamba	10	1530CST			0	0	0	0	Hail (0.75)
<b>Lowndes County</b> Columbus	10	1535CST			0	0	5	0	Hail (1.75)
	Numerous car windows and windows of homes and offices were broken. Hail covered the ground in many places across the city of Columbus and could still be seen the next day.								
<b>Columbus</b>	10	1535CST- 1550CST	2.0	440	0	16	6	0	Tornado (F2)
	The tornado touched down near the city limits on the northwestern side of Columbus and moved southeast through the city. Sixteen people were injured, none seriously. Two mobile homes were destroyed and five others damaged. Three homes were destroyed and nearly 70 others sustained damage. Thirty to forty businesses were damaged. Mississippi University for Women took a direct hit from the tornado and received major damage. Many trees were blown down or had the tops ripped off.								
<b>Issaquena County</b> Fitler	10	1555CST			0	0	3	0	Hail (0.88)
	Hail broke windows in a store in Fitler.								
<b>Sharkey County</b> 1 W Onward	10	1605CST			0	0	0	0	Hail (1.75)
<b>Winston County</b> 5 SE Vernon	10	1625CST			0	0	0	0	Hail (0.88)
	Nickel-size hail covered the ground.								
<b>Attala County</b> Kosciusko	10	1630CST			0	0	4	0	Hail (1.25)
	Hail damaged the roofs of several houses.								
<b>Winston County</b>	10	1652CST			0	0	0	0	Hail (0.75)
	Dime-size hail fell in the extreme southwestern corner of Winston County.								
<b>Hinds County</b> 2 E Brownsville	10	1705CST			0	0	0	0	Hail (1.00)
<b>Neshoba County</b> 2 N Philadelphia	10	1708CST			0	0	0	0	Hail (0.88)
<b>Philadelphia</b>	10	1745CST			0	0	0	0	Hail (0.75)
<b>Hinds County</b> Clinton	10	1756CST			0	0	0	0	Hail (1.00)
<b>2 W Jackson</b>	10	1815CST			0	0	2	0	Hail (1.75)
	Hail broke the windows out of a police car at a mall in west Jackson.								
<b>Kemper County</b> Porterville	10	1845CST			0	0	2	0	Thunderstorm Winds
	Several trees were blown down by thunderstorm winds.								
<b>Lauderdale County</b> 8 N Meridian	10	1955CST			0	0	2	0	Thunderstorm Winds

# Storm Data and Unusual Weather Phenomena

October 1992

Location	Date	Time Local/ Standard	Path Length (Miles)	Path Width (Yards)	Number of Persons Killed	Injured	Estimated Damage Property	Crops	Character of Storm
----------	------	----------------------------	---------------------------	--------------------------	--------------------------------	---------	---------------------------------	-------	--------------------

## MISSISSIPPI Cont'd

Several trees were blown down.

**Jasper County**  
1 NW Heidelberg

16 1615CST 2.0 100 0 0 3 0 Tornado (F0)

The tornado picked up some debris and downed a couple of trees, but no major damage was reported.

## MISSOURI

**Platte County**  
Platte Woods

07 2000CST 0 0 2 0 Thunderstorm Winds

Large tree limbs were blown down.

**Buchanan County**  
St. Joseph

07 2030CST 0 0 4 0 Thunderstorm Winds

Two trailers sustained damage at a construction site. Damage was done to homes and trees; large branches knocked out power to about 75 homes.

**Barton County**  
Lamar

07 2120CST 0 0 4 0 Thunderstorm Winds

Four utility poles were blown down and a barn was extensively damaged killing one pig.

**Jackson County**  
Blue Springs

07 2337CST 0 0 2 0 Thunderstorm Winds

Several large trees were blown down.

**Lincoln, St.  
Charles, and St.  
Louis Counties**

08 1700CST-  
2130CST 0 0 4 2 High Winds

A strong low pressure over the northern Midwest brought strong winds to sections of east-central Missouri during the evening hours. Gusts to 45 mph knocked down many trees, power lines, and blew transformers knocking power out to many communities.

**Butler County**  
Poplar Bluff

15 1920CST 0 0 0 0 Flash Flood

The county EOC reported many streams in the Poplar Bluff area were out of their banks. Nearly five inches of rain fell flooding many roads south of town, including Highway 53.

**Jasper County**  
Joplin

31 2309CST 0 0 0 0 Thunderstorm Winds (G52)

Winds at the Joplin Airport gusted to 60 mph with a line of thunderstorms to the south.

**McDonald County**  
Southwest City

31 2355CST 0 0 0 0 Hail (0.75)

**Newton County**  
2 SW Neosho

31 2359CST 0 0 0 0 Hail (0.75)

## MONTANA

**Wibaux County**  
Near Wibaux  
MTZ003

04 1820MST 0 0 0 0 Hail (1.75)  
13 0100MST-  
0900MST 0 0 4 0 Heavy Snow

Heavy snow fell along the eastern slopes of the Rockies overnight. Logan Pass received 15 inches of snow and Dupuyer 6 inches of snow.

**MTZ004,007,009**

14 2000MST-  
15 0800MST 0 0 4 0 Heavy Snow

Heavy snow fell along the southern border of the state. Red Lodge received 13 inches of snow, 5 inches fell at Broadus and Helena, 4 inches at Big Timber and 3 inches at Livingston and Roundup.

# Storm Data and Unusual Weather Phenomena

October 1992

Location	Date	Time Local/ Standard	Path Length (Miles)	Path Width (Yards)	Number of Persons		Estimated Damage		Character of Storm
					Killed	Injured	Property	Crops	

## NEBRASKA

None reported.

## NEVADA

**Pershing County  
Lovelock**

01	1555PST				0	0	0	0	Thunderstorm Winds (G51)
----	---------	--	--	--	---	---	---	---	--------------------------

A thunderstorm wind gust of 51 knots was reported at the Lovelock Airport.

**NVZ007  
East Central  
Nevada**

02	1210PST- 1630PST				0	0	?	0	High Winds
----	---------------------	--	--	--	---	---	---	---	------------

A strong cold front moved through Eastern Nevada producing winds of 40 to 50 mph with occasional gusts to 65 mph.

**Clark County  
12 E Las Vegas**

24	0930PST				1	0	0	0	Flash Flood
----	---------	--	--	--	---	---	---	---	-------------

A man drowned while fishing near the mouth of the Las Vegas Wash. He was pulled under by the strong currents caused by heavy rains in the Las Vegas Valley. (M400)

**Clark County  
10 N Searchlight**

24	1505PST				0	0	0	0	Flash Flood
----	---------	--	--	--	---	---	---	---	-------------

The Nevada Highway Patrol closed U.S. Highway 95 from the U.S. Highway 93 junction, south to the California border due to flash flooding.

**NVZ003  
Extreme Western  
Nevada**

29	1830PST- 2300PST				0	0	0	0	High Winds
----	---------------------	--	--	--	---	---	---	---	------------

High winds were reported throughout western Nevada as a strong cold front moved through the area. A wind gust of 70 mph was reported in southwest Reno.

**NVZ004  
West Central  
Nevada**

29	2100PST- 30 0600PST				0	0	?	0	High Winds
----	------------------------	--	--	--	---	---	---	---	------------

High winds spread across west central Nevada. The Mineral County Sheriff reported winds of 50 to 55 mph in Hawthorne with estimated gusts of 75 mph. At 11:45 PM PST, a large truck was blown over on U.S. 95 north of Hawthorne. U.S. Highway 95 between Hawthorne and Schurz was closed for several hours due to blowing rocks and debris.

## NEW HAMPSHIRE

None reported.

## NEW JERSEY, Northern

None reported.

## NEW JERSEY, Southern

None reported.

## NEW MEXICO

**Luna County  
Deming Airport**

13	1412MST				0	0	0	0	Thunderstrom Winds (G50)
----	---------	--	--	--	---	---	---	---	--------------------------

A thunderstorm wind gust to 50 knots (58 mph) was recorded at the Deming airport by the Flight Service Station. Rain evaporated as it fell into the dry surface airmass, resulting in the strong downburst.

# Storm Data and Unusual Weather Phenomena

October 1992

Location	Date	Time Local/ Standard	Path Length (Miles)	Path Width (Yards)	Number of Persons Killed	Injured	Estimated Damage Property	Crops	Character of Storm
----------	------	----------------------------	---------------------------	--------------------------	--------------------------------	---------	---------------------------------	-------	--------------------

## NEW YORK, Central

NYZ006	>012-018	>020	16	1808EST- 2300EST	0	0	6	?	High Wind
--------	----------	------	----	---------------------	---	---	---	---	-----------

One of the strongest October cold fronts in recent memory swept through eastern New York causing extensive damage in some areas. The highest wind gusts occurred at the time of frontal passage in many areas with 63 kts recorded at SCH at 2020EST and 49 kts at ALB at 2036EST. Damage was mainly confined to trees and power lines down as well as some structural damage with several homes and cars crushed by fallen trees. Among the areas hardest hit were the Pine Lake Campground in Caroga. A mobile home was heavily damaged and McDougall Lake in East Greenwich numerous trees were downed or completely uprooted in a narrow ravine, and several small boats were destroyed.

## NEW YORK, Coastal

None reported.

## NEW YORK, Western

NYZ021	Chautauqua County	12	1835EST	0	0	4	0	High Winds
NYZ001	Erie County	12	1900EST	0	0	4	0	High Winds

Southwest winds ahead of a cold front funnelled up Lake Erie producing damaging winds along the lakeshore. Sustained wind speeds of 40 mph were recorded at Dunkirk, Chautauqua County, Buffalo and Erie County. At the Buffalo Coast Guard, winds gusts were 54 mph.

NYZ022	Chautauqua County	16	1500EST	0	0	4	0	High Winds
NYZ003	Chemung and Tompkins Counties	16	1800EST	0	0	4	0	High Winds
		16	1812EST	0	0	4	0	High Winds
NYZ004	Jefferson County	16	1900EST	0	0	4	0	High Winds
NYZ001	Erie County	16	2030EST	0	0	4	0	High Winds

Deep low pressure and a strong cold front crossed the area. The system was accompanied by damaging winds. Trees and power lines were reported down in Elmira, Chemung County, Cayuga Heights, Tompkins County, Buffalo metro area and Erie County. Sustained wind speeds reached 50 mph along the Lake Erie shore of Chautauqua County. Along the Lake Ontario shoreline winds gusts were 58 mph.

## NORTH CAROLINA

NCZ005-008,013	03-04	03-04	0	0	0	5	Heavy Rain
----------------	-------	-------	---	---	---	---	------------

Steady moderate to heavy rain lasted for several hours in various locations during the period from late on the 3rd through midday on the 4th. Rainfall amounts as much as four to five inches were reported. Though no major flooding of rivers or streams was reported, damage occurred to crops and trees. It was estimated that over one million dollars worth of damage resulted to produce crops during a critical part of the harvest season. Many trees in the Southern Piedmont, weakened by Hurricane Hugo three years earlier, on saturated ground were toppled by wind gusts to around 35 mph. Some trees fell on power lines.

Bladen County	Tar Heel	04	1637EST	0	0	0	0	Funnel Cloud
Cleveland County	14 SW Shelby	30	2222EST	0	0	3	0	Thunderstorm Wind

Wind blew down an outbuilding, damaged trees, and tore the roof off of a pump house.

## Storm Data and Unusual Weather Phenomena

October 1992

Location	Date	Time Local/ Standard	Path Length (Miles)	Path Width (Yards)	Number of Persons		Estimated Damage		Character of Storm
					Killed	Injured	Property	Crops	

### NORTH DAKOTA

NDZ015- Part of Extreme Northeast North Dakota	13	0700CST-							
	13	1900CST			0	0	0	0	Heavy Snow

Six to eight inches of snow fell over a small part of the northeast corner of North Dakota. The heaviest snow fell in western Cavalier County. Snowfall amounts included; Sarles, eight inches, Calvin/Clyde, seven inches, and Langdon, six inches.

### OHIO

Van Wert County	08	2045EST			0	0	5	0	Thunderstorm Winds
Butler County	08	2020EST			0	0	5	0	Thunderstorm Winds
Defiance County 5 SW Defiance	08	2025EST			0	0	4	0	Thunderstorm Winds
Hamilton County North-Central Portion	08	2030EST			0	0	4	0	Thunderstorm Winds
Newtown	08	2040EST			0	0	3	0	Hail (1.75)
Preble County Camden	08	2040EST			0	0	4	0	Thunderstorm Winds
Montgomery County Phillipsburg	08	2045EST			0	0	5	0	Thunderstorm Winds
Miami County Western Portion	08	2058EST			0	0	5	0	Thunderstorm Winds
Fulton County Wauseon	08	2110EST			0	0	4	0	Thunderstorm Winds
Delta Delta Swanton	08	2125EST			0	0	4	0	Thunderstorm Winds

Thunderstorms downed trees and produced some large hail. Significant structural damage also occurred in Defiance, Miami, and Montgomery Counties.

Lucas County Sylvania	14	1823EST			0	0	2	0	Hail (1.00)
Curtice	14	1843EST			0	0	2	0	Hail (1.25)
Cuyahoga County Garfield Heights	14	1953EST			0	0	4	0	Thunderstorm Winds

Thunderstorms produced large hail in Lucas County and tree damage in Cuyahoga County.

Mahoning County Southeastern Portion	15	1500EST			0	0	5	0	Thunderstorm Winds
--	----	---------	--	--	---	---	---	---	--------------------

A thunderstorm downed trees and power lines. Thunderstorms also damaged some structures.

### OKLAHOMA

Stephens County 2 SW Marlow	07	1345CST			0	0	?	?	Hail (1.00)
Caddo County Hinton	07	1403CST			0	0	?	?	Hail (1.00)
Grady County 2 S Chickasha	07	1405CST			0	0	?	?	Hail (0.75)
Canadian County 6 ENE Lookeba	07	1415CST			0	0	?	?	Hail (0.88)
Canadian County 4 W El Reno	07	1420CST			0	0	?	?	Thunderstorm Winds (G52)
Canadian County Piedmont	07	1450CST			0	0	?	?	Thunderstorm Winds (G52)
Kingfisher County 6.5 SE Kingfisher	07	1450CST			0	0	?	?	Thunderstorm Winds (G56)



## Storm Data and Unusual Weather Phenomena

October 1992

Location	Date	Time Local/ Standard	Path Length (Miles)	Path Width (Yards)	Number of Persons		Estimated Damage		Character of Storm
					Killed	Injured	Property	Crops	
<b>OKLAHOMA Cont'd</b>									
Canadian County SW Oklahoma City (Vicinity S.W 27th & Czech Hall Road)	07	1455CST	.25	25	0	3	5	?	Tornado (F1)
Canadian County Piedmont	07	1501CST			0	0	?	?	Hail (0.88)
Logan County 1 E Guthrie	07	1503CST			0	0	?	?	Thunderstorm Winds (G52)
Logan County 1 E Guthrie	07	1503CST			0	0	?	?	Hail (0.75)
Logan County S Seward	07	1524CST			0	0	?	?	Hail (1.00)
Logan County 5S .50 E Guthrie	07	1530CST			?	?	0	0	Hail (0.88)
Oklahoma County Del City	07	1530CST			0	0	3	?	Thunderstorm Winds
Logan County Guthrie City Lake	07	1530CST			0	0	?	?	Hail (0.88)
Payne County 4 N Coyle	07	1545CST			0	0	?	?	Hail (0.75)
Canadian County Piedmont	07	1550CST			0	0	?	?	Thunderstorm Winds (G52)
Payne County Stillwater	07	1550CST			0	0	?	?	Thunderstorm Winds (G52)
Lincoln County 4 NW Tryon	07	1605CST			0	0	?	?	Thunderstorm Winds (G52)
Osage County 3 W Grainola	07	1620CST			0	0	?	?	Thunderstorm Winds (G52)
Creek County Oilton	07	1620CST			0	0	?	?	Thunderstorm Winds (G54)
Pawnee County Skedee	07	1625CST			0	0	?	?	Hail (0.88)
<p>Severe thunderstorms developed during the early afternoon of the 7th in southwest and central Oklahoma along a strong cold front. These storms later moved east into northeast Oklahoma during the late afternoon hours. The main threat from these storms was strong winds, although some hail up to quarter-size was reported.</p> <p>In Del City, severe thunderstorm winds damaged the roof of a home. One tornado was reported. In southwest Oklahoma City, a small gustnado developed and moved through a residential area occupied by mostly mobile homes and modular homes. Six mobile homes were damaged or destroyed, and one garage was damaged. The damage was estimated at \$150,000. A 60 year old man was in one of the mobile homes with his 2 granddaughters when the home was destroyed, and all 3 suffered minor injuries. Nickel-size hail at Guthrie City Lake (5 Miles south and 1.5 miles west of Guthrie) at 1530CST on the 7th.</p>									
Sequoyah County N Part of Kerr Lake	07	2030CST			0	0	5	?	High Winds
<p>Strong winds on Kerr Lake sank a tug boat and 2 of the 8 barges it had in tow.</p>									
Carter County 3 W Wilson	15	1717CST			0	0	?	?	Hail (2.75)
Carter County Wilson	15	1717CST			0	0	?	?	Hail (1.75)
Carter County 2 W Graham	15	1729CST			0	0	?	?	Hail (2.75)

# Storm Data and Unusual Weather Phenomena

October 1992

Location	Date	Time Local/ Standard	Path Length (Miles)	Path Width (Yards)	Number of Persons		Estimated Damage		Character of Storm
					Killed	Injured	Property	Crops	
<b>OKLAHOMA Cont'd</b>									
Carter County 3 W Wilson	15	1732CST			0	0	?	?	Hail (2.75)
Coal County 7 NNW Centrahoma	15	1735CST			0	0	?	?	Hail (1.75)
Hughes County 5 S Calvin	15	1740CST			0	0	?	?	Hail (1.25)
Hughes County Calvin	15	1800CST			0	0	?	?	Hail (0.88)
Murray County Hickory	15	1805CST			0	0	?	?	Hail (1.75)
Pontotoc County 3 E Roff	15	1810CST			0	0	?	?	Hail (1.00)
McIntosh County 4 N Hanna	15	1815CST			0	0	?	?	Hail (0.75)
Hughes County Gerty	15	1840CST			0	0	?	?	Hail (0.88)
Hughes County Calvin	15	1845CST			0	0	?	?	Hail (0.75)
Coal County 1 N Tupelo	15	1900CST			0	0	?	?	Hail (1.00)
Severe thunderstorms moved across portions of south central, east central, and southeast Oklahoma. The storms produced hail up to base ball-size.									
Garvin County Pauls Valley	26	1350CST			0	0	3	?	Lightning
Lightning struck a garage in Pauls Valley, setting it on fire.									
Cherokee County Cookson	26	1445CST			0	0	?	?	Lightning
Two men were killed in a rock quarry at Cookson. The men were putting caps on 24 sticks of dynamite used for blasting, when lightning struck a quarter mile away. The resulting ground currents ignited the dynamite killing the 2 men. (M26O) (M25O)									
Kiowa County Gotebo	28	1748CST			0	0	?	?	Hail (1.00)
Caddo County Carnegie	28	1810CST			0	0	?	?	Hail (0.75)
Canadian County El Reno	28	1835CST			0	0	?	?	Hail (0.75)
Comanche County 2 E 2 N Chattanooga	28	1840CST			0	0	4	?	Thunderstorm Winds
Isolated severe thunderstorms moved across portions of southwest and central Oklahoma, bringing large hail and strong winds. Northeast of Chattanooga, severe thunderstorms winds destroyed a barn.									
Pittsburg County Quinton	31	1545CST			0	0	5	?	Thunderstorm Winds (G56)
Haskell County Stigler	31	1625CST			0	0	?	?	Hail (1.75)
Haskell County Stigler	31	1631CST			0	0	?	?	Hail (1.75)
Okmulgee County Morris	31	1700CST			0	0	?	?	Hail (1.75)
Muskogee County Boynton	31	1740CST			0	0	?	?	Hail (0.88)
Muskogee County Boynton	31	1745CST			0	0	?	?	Hail (1.75)

## Storm Data and Unusual Weather Phenomena

October 1992

Location	Date	Time Local/ Standard	Path Length (Miles)	Path Width (Yards)	Number of Persons		Estimated Damage		Character of Storm
					Killed	Injured	Property	Crops	
<b>OKLAHOMA Cont'd</b>									
Love County 8 W Marietta	31	1805CST			0	0	?	?	Hail (1.00)
Muskogee County Muskogee	31	1808CST			0	0	?	?	Hail (1.75)
Cherokee County 5 SW Tahlequah	31	1915CST			0	0	?	?	Hail (0.88)
Cherokee County 5 SW Tahlequah	31	1915CST			0	0	?	?	Thunderstorm Winds (G56)
Cherokee County Moodys	31	1925CST			0	0	?	?	Thunderstorm Winds (G52)
Cherokee County 3 N Moodys	31	2001CST			0	0	?	?	Hail (0.75)
Oklahoma County SW Oklahoma City (SW 32nd and Agnew)	31	2016CST			0	0	?	?	Hail (1.00)
Cleveland County Norman	31	2021CST			0	0	?	?	Thunderstorm Winds (G55)
Cleveland County Norman NWS	31	2025CST			0	0	?	?	Hail (1.50)
Creek County Drumright	31	2030CST			0	0	?	?	Hail (1.00)
Cleveland County 5 N Norman	31	2030CST			0	0	?	?	Hail (1.75)
McClain County 4 N Blanchard	31	2030CST			0	0	?	?	Thunderstorm Winds (G52)
Creek County Drumright	31	2030CST			0	0	?	?	Hail (1.00)
Grady County Rush Springs	31	2030CST			0	0	?	?	Hail (0.75)
Pottawatomie County Mc Loud	31	2100CST			0	0	?	?	Hail (0.75)
Delaware County W Siloam Springs	31	2100CST			0	0	?	?	Hail (0.75)
Oklahoma County Oklahoma City (S.E. 59th and Harrah Road)	31	2103CST			0	0	?	?	Hail (1.00)
Pawnee County Terlton	31	2105CST			0	0	?	?	Hail (1.00)
Lincoln County Sparks	31	2110CST			0	0	?	?	Hail (1.00)
McClain County Goldsby	31	2115CST			0	0	?	?	Thunderstorm Winds
Cleveland County Norman NWS	31	2120CST			0	0	?	?	Thunderstorm Winds (G50)
Cleveland County Norman (Max Westheimer Airfield)	31	2120CST			0	0	4	?	Thunderstorm Winds (G52)
Oklahoma County Oklahoma City (I-240 and Sunnyslane Road)	31	2122CST			0	0	?	?	Hail (0.88)
Cleveland County Moore	31	2124CST			0	0	?	?	Thunderstorm Winds (G55)
Cleveland County 2 N Norman	31	2130CST			0	0	3	?	Hail (1.75)

# Storm Data and Unusual Weather Phenomena

October 1992

Location	Date	Time Local/ Standard	Path Length (Miles)	Path Width (Yards)	Number of Persons		Estimated Damage		Character of Storm
					Killed	Injured	Property	Crops	
<b>OKLAHOMA Cont'd</b>									
Lincoln County Praque	31	2130CST			0	0	?	?	Hail (1.25)
Oklahoma County Oklahoma City (Fowler and U.S. Highway 62)	31	2135CST			0	0	?	?	Thunderstorm Winds (G50)
Osage County 5 N Sand Springs	31	2145CST			0	0	?	?	Thunderstorm Winds
Pottawatomie County 2 E Aydelotte	31	2158CST			0	0	?	?	Hail (0.88)
Tulsa County Nr Prattville	31	2200CST			0	0	?	?	Hail (1.00)
Tulsa County Tulsa	31	2209CST			0	0	?	?	Hail (0.75)
Creek County 2 W Bristow	31	2210CST			0	0	?	?	Hail (0.88)
Tulsa County Tulsa	31	2212CST			0	0	?	?	Hail (0.88)
Tulsa County Tulsa Internatonal Airport	31	2212CST			0	0	?	?	Hail (0.75)
Lincoln County 2 W Prague	31	2214CST			0	0	?	?	Hail (1.25)
Tulsa County Turley	31	2218CST			0	0	?	?	Hail (1.00)
Creek County 2 W Depew	31	2220CST			0	0	?	?	Hail (0.75)
Tulsa County Tulsa	31	2227CST			0	0	?	?	Hail (1.75)
Tulsa County Jenks	31	2230CST			0	0	?	?	Hail (1.00)
Creek County Bristow	31	2233CST			0	0	?	?	Thunderstorm Winds (G52)
Tulsa County S Tulsa	31	2240CST			0	0	?	?	Hail (1.25)
Tulsa County Broken Arrow	31	2243CST			0	0	?	?	Hail (1.25)
Wagoner County 4 NE Broken Arrow	31	2250CST			0	0	?	?	Hail (0.75)
Okmulgee County 5 N Okmulgee	31	2305CST			0	0	?	?	Hail (0.88)
Rogers County 4 W Inola	31	2315CST			0	0	?	?	Thunderstorm Winds
Mayes County Pryor	31	2325CST			0	0	?	?	Thunderstorm Winds
Delaware County 4 E Ketchum	31	2331CST			0	0	?	?	Hail (0.75)
Johnston County Tishomingo	31	2340CST			0	0	?	?	Hail (0.75)
Okfuskee County Weleetka	31	2340CST			0	0	?	?	Thunderstorm Winds (G52)
Muskogee County Haskell	31	2345CST			0	0	?	?	Thunderstorm Winds
Ottawa County Commerce	31	2350CST			0	0	?	?	Hail (0.75)

# Storm Data and Unusual Weather Phenomena

October 1992

Location	Date	Time Local/ Standard	Path Length (Miles)	Path Width (Yards)	Number of Persons		Estimated Damage		Character of Storm
					Killed	Injured	Property	Crops	

## OKLAHOMA Cont'd

Ottawa County Commerce	31	2350CST			0	0	?	?	Thunderstorm Winds
Delaware County Kenwood	31	2355CST			0	0	?	?	Thunderstorm Winds

Severe thunderstorms developed over eastern Oklahoma during the afternoon of the 31st. In the early evening more severe thunderstorms developed back to the west over southern and central Oklahoma, and again moved into eastern Oklahoma during the evening hours of the 31st and early morning hours of the 1st.

Strong winds downed trees at Goldsby, and two miles north of downtown Norman, golf ball-size hail driven by strong winds caused damage to a car and truck, and to the siding on a home. The total damage was estimated at \$1500.

Winds were measured at 58 mph at the National Weather Service in Norman, and just to the north of the NWS at the Max Westheimer Airfield winds estimated in excess of 60 mph damaged several small airplanes.

In eastern Oklahoma large hail and damaging winds accompanied the storms, with the town of Quinton being the hardest hit. Strong thunderstorm winds of at least 65 mph caused major roof damage to the high school in Quinton and moderate roof damage to a church. Three outbuildings were destroyed and 35 homes sustained minor roof damage in Quinton. Thunderstorm winds downed several trees at Kenwood, and numerous large tree limbs were downed at Haskell and 4 miles west of Inola. Thunderstorm winds caused roof damage at both Pryor and Commerce. Large tree limbs were downed 5 miles north of Sand Springs, and numerous chain-link and wooden fences were also knocked down in this area. Golf ball-size hail covered the ground at Morris. Large hail was widespread in and around the city of Tulsa, with the hail ranging from dime to golf ball-size. Numerous large tree branches were downed by severe thunderstorm winds at Checotah.

## OREGON

None reported.

## PENNSYLVANIA, Eastern

PAC-001 Adams County	09	1630EST- 1730EST			0	0	1	0	Flash Flood
-------------------------	----	---------------------	--	--	---	---	---	---	-------------

Heavy thunderstorm downpours with over one inch of rain in a short time caused minor small stream flooding around Gettysburg.

York County 4 E Dillsburg to 1 E Andersontown	09	1704EST- 1708EST	2.0	100	0	0	6	0	Tornado (F2)
---	----	---------------------	-----	-----	---	---	---	---	--------------

A tornado with winds in excess of 100 mph touched down at least 6 times along a 6 mile path. The path length on the ground was approximately 2 miles and 30 to 100 yards wide. Many hundreds of large trees were knocked down or snapped off. The tornado went through some orchards and thousands of apple trees were uprooted. Some of them ended upside down with the roots up in the air. One block building was completely demolished and a nearby barn had most of the upper half gone. The nearby house had siding and a chimney gone and other structural damage. Another barn had significant structural and roof damage. At least 5 houses had significant roof and siding damage either from the wind or from falling trees. Three farms and about 15 residences had some damage. Several vehicles were damaged by falling walls or flying debris. A truck was thrown 3 feet and into an automobile.

York County Lewisberry	09	1721EST			0	0	4	0	Thunderstorm Winds
---------------------------	----	---------	--	--	---	---	---	---	--------------------

Thunderstorm wind gusts caused roof and siding damage to several houses and downed numerous trees.

Wyoming County Meshoppen	09	1725EST			0	0	3	0	Hail (0.75)
-----------------------------	----	---------	--	--	---	---	---	---	-------------

# Storm Data and Unusual Weather Phenomena

October 1992

Location	Date	Time Local/ Standard	Path Length (Miles)	Path Width (Yards)	Number of Persons Killed Injured	Estimated Damage Property Crops	Character of Storm
----------	------	----------------------------	---------------------------	--------------------------	--	---------------------------------------	--------------------

## PENNSYLVANIA, Eastern Cont'd

A thunderstorm dropped 0.75 inch hail and heavy rain. In a 3 hour period 2.4 inches of rain fell and some street flooding resulted.

PAC-097 Northumberland County	09	1809EST 2000EST			0 0	1 0	Flash Flood
-------------------------------------	----	--------------------	--	--	-----	-----	-------------

Thunderstorm downpours dropped 2.25 to three inches of rain. Minor small stream flooding resulted around Watsonstown. Some small roads were closed and some fields were flooded.

PAC-119 Union County	09	1900EST 2000EST			0 0	1 0	Flash Flood
-------------------------	----	--------------------	--	--	-----	-----	-------------

Thunderstorm downpours caused minor small stream flooding and flooding in poor drainage areas around White Deer Furnace.

Wyoming County Meshoppen	11	1643EST			0 0	3 0 ? 0	Thunderstorm Winds Hail (1.0)
-----------------------------	----	---------	--	--	-----	------------	----------------------------------

Thunderstorm wind gusts brought small trees down. There also was nickel size hail, heavy rain and severe lightning.

## PENNSYLVANIA, Western

Clearfield County 2 N Dubois	15	1145EST			0 0	0 0	Hail (1.75)
---------------------------------	----	---------	--	--	-----	-----	-------------

Golf ball-size hail vicinity Sandy Township.

Butler County 11 N Butler	15	1621EST			0 0	0 0	Thunderstorm Winds
------------------------------	----	---------	--	--	-----	-----	--------------------

Trees uprooted West Sunbur on Route #308 and in Unionville.

12 NW Butler	15	1630EST			0 0	0 0	Thunderstorm Winds Hail (0.75)
--------------	----	---------	--	--	-----	-----	-----------------------------------

Trees uprooted from 70 MPH wind and 0.75 inch Hail in Portersville.

Clarion County 12 SW Clarion	15	1640EST			0 0	0 0	Thunderstorm Winds
---------------------------------	----	---------	--	--	-----	-----	--------------------

Trees uprooted in Rimersburg.

13 S Clarion	15	1655EST			0 0	0 0	Thunderstorm Winds
--------------	----	---------	--	--	-----	-----	--------------------

Trees and powerlines down in New Bethlehem near route #839.

## RHODE ISLAND

None reported.

## SOUTH CAROLINA

Greenville County Greenville	04	AM			0 0	? 0	Thunderstorm Winds
---------------------------------	----	----	--	--	-----	-----	--------------------

Four pine trees were blown over by thunderstorm winds at one house. There were also scattered power outages caused by tree limbs falling on wires.

SCZ007-008 Coast	03 06	AM- 0900EST			0 0	? 0	Flood
---------------------	----------	----------------	--	--	-----	-----	-------

A cyclone which developed off the U.S. Gulf Coast and tracked northeastward off the South Atlantic Coast caused street flooding and beach erosion in Coastal South Carolina, especially at the time of high tide each day.

# Storm Data and Unusual Weather Phenomena

October 1992

Location	Date	Time Local/ Standard	Path Length (Miles)	Path Width (Yards)	Number of Persons Killed Injured	Estimated Damage Property Crops	Character of Storm
----------	------	----------------------------	---------------------------	--------------------------	--	---------------------------------------	--------------------

## SOUTH CAROLINA Cont'd

Newberry County Newberry	08	PM			0 0	? 0	Flood
Scotts Creek flooded portions of Newberry.							
Allendale County Eastern Portion	09	0030EST- 0815EST			0 0	6 ?	Flash Flood
Cotylleton County Northwestern Portion	09 10	0600EST- 1200EST			0 0	6 ?	Flood
Hampton County Northern Portion	09 10	0600EST- 1200EST			0 0	6 ?	Flood

Nearly nine inches of rain (unofficial) fell at Fairfax in several hours causing flash flooding in the headwaters of the Combahee, Coosawhatchie, and Salkehatchie Rivers. These streams, and their tributaries, flooded numerous roads and bridges in the three counties listed above. In addition to the road and bridge damage, the storm also caused 15 cars of a 91-car train to derail. One of the bridges east of Fairfax, in Hampton County, failed while one automobile was traversing the span. Two other vehicles attempted to cross the span, ignoring warnings that the bridge was out. The two occupants of the first vehicle were drowned in the incident. The occupants of the two other automobiles were treated for cuts and bruises and released. The automobile accidents occurred around 6:00 a.m. Three dams failed along Duck Creek, in Allendale County. Additionally, a long distance company had its service disrupted throughout portions of four states when a microwave tower was flooded in the deluge. At least 50 homes were damaged in the flooding. Additionally, flooding was reported in Walterboro, along Ireland Creek.

Horry County Myrtle Beach	09	0438EST			0 0	? 0	Urban Flooding
------------------------------	----	---------	--	--	-----	-----	----------------

Portions of the Grand Strand experienced urban flooding. Some locations had more than two feet of water in parking lots and streets.

## SOUTH DAKOTA

SDZ007 Black Hills	06 07	0900MST- 1200MST			0 0	0 0	Heavy Snow
-----------------------	----------	---------------------	--	--	-----	-----	------------

Snow blanketed the Black Hills with generally 3 to 6 inches amounts except for Lead which reported 9 inches.

SDZ018-020 Southeast SD	06 09	0000CST- 0000CST			0 0	2 4	Heavy Rain Flooding
----------------------------	----------	---------------------	--	--	-----	-----	------------------------

Heavy rains of 3 to 7 inches inundated far southeast South Dakota and caused widespread flooding of cropland.

SDZ001 > 005 Northern SD	15	0000CST- 2400CST			0 0	0 0	Heavy Snow
-----------------------------	----	---------------------	--	--	-----	-----	------------

Two to 6 inches of snow fell across the northern part of the state with an isolated report of 7 inches near Harding in northwest South Dakota.

## TENNESSEE

None reported.

## TEXAS, Panhandle

None reported.

## Storm Data and Unusual Weather Phenomena

October 1992

Location	Date	Time Local/ Standard	Path Length (Miles)	Path Width (Yards)	Number of Persons		Estimated Damage	Character of Storm
					Killed	Injured	Property Crops	
<b>TEXAS, Northern</b>								
<b>Cooke County</b>								
3 N Gainesville	07	1500CST			0	0	? ?	Hail (0.75)
Valley View	07	1545CST			0	0	? ?	Hail (0.75)
<b>Tarrant County</b>								
Eagle Mtn Lake	07	1524CST			0	0	? ?	Hail (0.75)
Eagle Mtn Lake	07	1531CST			0	0	? ?	Thunderstorm Winds (G61)
Eagle Mtn Lake	07	1543CST			0	0	? ?	Hail (1.00)
					0	0	3 ?	Thunderstorm Winds
Grapevine	07	1600CST			0	0	3 ?	Thunderstorm Winds
5 E Benbrook	07	1608CST			0	0	? ?	Hail (1.00)
Colleyville	07	1612CST			0	0	4 ?	Thunderstorm Winds
Grapevine	07	1612CST			0	0	4 ?	Thunderstorm Winds
Grapevine	07	1622CST			0	0	4 ?	Thunderstorm Winds

At 1543CST at the north end of Eagle Mountain Lake, strong winds uprooted trees. At 1600CST at Grapevine, strong winds brought trees down. At 1612CST at both Colleyville and Grapevine, strong winds downed trees and utility poles. At 1622CST at Grapevine, strong winds lifted shingles from houses.

<b>Grayson County</b>								
Pottsboro	07	1600CST			0	0	3 ?	Thunderstorm Winds
								Strong winds blew trees down.
<b>Collin County</b>								
Farmersville	07	1612CST			0	0	? ?	Hail (1.75)
<b>Hood County</b>								
2 SW Cresson	07	1615CST			0	0	? ?	Hail (0.88)
<b>Dallas County</b>								
2 N Dallas/Fort Worth Airport	07	1612CST	short	narrow	0	0		Tornado (F0)
Farmers Branch	07	1615CST			0	0	? ?	Hail (1.75)
Coppell	07	1616CST			0	0	3 ?	Hail (1.00)
					0	0	4 ?	Thunderstorm Winds
Dallas/Fort Worth Airport	07	1619CST			? ?	0	0	Thunderstorm Winds (G51)
5 S Coppell	07	1622CST			0	0	? ?	Hail (1.75)
Irving	07	1626CST			0	0	? ?	Thunderstorm Winds (G53)
Dallas Love Field Airport	07	1630CST			0	0	3 ?	Thunderstorm Winds
Dallas	07	1632CST			0	3	5 ?	Thunderstorm Winds

At 2 N Dallas/Fort Worth Airport, a tornado touched down briefly, causing large branches to be blown from trees. At Coppell, strong winds blew windows and a section of roof from a middle school and more than 20 trees were blown down. Also at Coppell, hail dented automobiles. At Dallas Love Field Airport, strong winds overturned a single-engine airplane. At Dallas, strong winds blew a brick structure over, causing it to fall upon parked vehicles. At an apartment complex in Dallas, strong winds blew over flagpoles, tore chimneys from roofs, destroyed patio roofs and walls and peeled shingles from roofs. Also at Dallas, strong winds tore a roof section from the State Fair Coliseum, and 3 persons were injured, one critically, from flying debris.

<b>Johnson County</b>								
Joshua	07	1630CST			0	0	3 ?	Thunderstorm Winds
								Strong winds caused windows and doors of buildings to be blown in.

<b>Bosque County</b>								
Clifton	07	1645CST			0	0	? ?	Hail (1.75)
7 NW Clifton	07	1715CST			0	0	3 ?	Thunderstorm Winds
7 NNE Clifton	07	1725CST			0	0	? ?	Hail (1.75)
Valley Mills	07	1725CST			0	0	3 ?	Thunderstorm Winds



# Storm Data and Unusual Weather Phenomena

October 1992

Location	Date	Time Local/ Standard	Path Length (Miles)	Path Width (Yards)	Number of Persons Killed	Injured	Estimated Damage Property	Crops	Character of Storm
----------	------	----------------------------	---------------------------	--------------------------	--------------------------------	---------	---------------------------------	-------	--------------------

## TEXAS, Northern Cont'd

At 7 NW Clifton, strong winds lifted the roofs from 2 barns, causing 2 of the outside walls of one of them to collapse. At Valley Mills, strong winds blew trees down.

### Fannin County

Duplex	07	1644CST			0	0	?	?	Hail (0.75) and Thunderstorm Winds Thunderstorm Winds Thunderstorm Winds Tornado (F1)
4 N Bonham	07	1650CST			0	0	4	?	
Ladonia	07	1735CST			0	0	4	?	
1 SSW Ladonia- 1 S Ladonia	07	1735CST- 1738CST	0.5	80	0	0	5	?	

At Duplex, strong winds uprooted trees, some of which fell onto houses. At 4 N Bonham, strong winds downed power lines and blew trees down, one of which fell upon a house. At 1 S Ladonia, a tornado touched down and moved east-southeast, destroying a silo, unroofing a barn and breaking gateposts. A nearby house suffered shingle loss and chimney damage. Large limbs from a tree were brought down and a satellite dish was blown from its mount. The tornado moved into open country and dissipated. At Ladonia, strong downburst winds caused considerable damage across town. Limbs, signs and trees were blown over from west to east, many of which fell upon houses and power lines. An abandoned building was demolished and several houses had shingles blown from their roofs. Many windows were broken, including several stained glass and beveled windows in a century-old historical former church building.

### Rockwall County

Rockwall	07	1700CST			0	0	2	?	Thunderstorm Winds
Heath	07	1715CST			0	0	3	?	Thunderstorm Winds
Royse City	07	1730CST			0	0	4	?	Thunderstorm Winds

At Rockwall, strong winds blew large limbs from trees. At Heath, on the southeastern shore of Lake Ray Hubbard, strong winds blew down trees and signs. The marina suffered damage, as roofs of boat slips were blown away. At Royse City, strong winds brought down trees and power lines.

### Ellis County

Italy	07	1720CST			0	0	4	?	Thunderstorm Winds
Milford	07	1720CST			0	0	4	?	Thunderstorm Winds

At both Italy and Milford, strong winds brought trees and power lines down.

### Hunt County

Wolfe City	07	1730CST			0	0	?	?	Hail (0.75)
Kaufman County Terrell	07	1733CST			0	0	5	?	Thunderstorm Winds

Strong winds blew utility poles and power lines down, uprooted large trees, some of which fell upon automobiles and blew fences down. One building had its roof peeled back by strong winds, causing the side walls of the metal structure to fall in.

### Van Zandt County

Wills Point	07	1745CST			0	0	4	?	Thunderstorm Winds
Edgewood	07	1830CST			0	0	4	?	Thunderstorm Winds

At Wills Point, strong winds blew down trees and power lines. At Edgewood, strong winds brought down trees and power lines.

### Delta County

Klondike	07	1745CST			0	0	3	?	Thunderstorm Winds
Cooper	07	1750CST			0	0	?	?	Hail (0.75)
3 N Charleston	07	1750CST			0	0	4	?	Thunderstorm Winds
1 E Cooper	07	1755CST			0	0	3	?	Thunderstorm Winds

At Klondike, strong winds ripped the walls from a trailer house. At Cooper, strong winds blew down trees and power lines. At 3 N Charleston, thunderstorms winds downed power lines and partially unroofed a mobile home. At 1 E Cooper, a house under construction which was sheathed and ready for roof decking, was flattened by strong winds.

# Storm Data and Unusual Weather Phenomena

October 1992

Location	Date	Time Local/ Standard	Path Length (Miles)	Path Width (Yards)	Number of Persons Killed Injured	Estimated Damage Property Crops	Character of Storm
----------	------	----------------------------	---------------------------	--------------------------	--	---------------------------------------	--------------------

## TEXAS, Northern Cont'd

### McLennan County

1 N Waco Madison Cooper Airport	07	1750CST			0 0	2 ?	Thunderstorm Winds
Waco Madison Cooper Airport	07	1752CST			0 0	? ?	Thunderstorm Winds (G52)
McGregor McGregor Municipal Airport	07	1800CST			0 0	4 ?	Thunderstorm Winds
Hewitt 4 S Speegleville	07	1800CST			0 0	? ?	Thunderstorm Winds (G52)
1 N Speegleville	07	1806CST			0 0	2 ?	Thunderstorm Winds
1 N McGregor	07	1820CST			0 0	4 ?	Thunderstorm Winds
Robinson	07	1820CST			0 0	4 ?	Thunderstorm Winds

At 1 N Waco Madison Cooper Airport, strong winds snapped a power pole. At McGregor, strong winds blew trees and power lines down and fences were blown over. At McGregor Municipal Airport, strong winds unhinged hangar doors, which blew into an anchored airplane, damaging its wing. At 4 S Speegleville, strong winds blew a tree down. At 1 N McGregor, strong winds blew trees, fences and power lines down. At Robinson, strong winds unroofed a barn.

### Hopkins County Sulphur Bluff

	07	1815CST			0 0	4 ?	Thunderstorm Winds
--	----	---------	--	--	-----	-----	--------------------

Strong winds blew siding and roofing from buildings.

### Franklin County 2 W Talco

	07	1835CST			0 0	? ?	Hail (1.75)
					0 0	4 ?	Thunderstorm Winds

Strong winds blew down trees and power lines.

### Titus County Talco

	07	1835CST			0 0	? ?	Hail (1.75)
					0 0	3 ?	Thunderstorm Winds
Talco	07	1845CST			0 0	4 ?	Thunderstorm Winds
Talco	07	1855CST			0 0	4 ?	Thunderstorm Winds
13 N Mount Pleasant	07	1900CST	short	narrow	0 0	4 ?	Tornado (F0)

At 1835CST at Talco, strong winds brought power lines down. At 1845CST at Talco, strong winds lifted sections of roofs from four houses. At 1855CST at Talco, strong winds blew down trees and power lines. At 13 N Mount Pleasant, a tornado touched down briefly and downed trees and power lines.

### Henderson County Eustace

	07	1900CST			0 0	4 ?	Thunderstorm Winds
--	----	---------	--	--	-----	-----	--------------------

Strong winds blew the roof from a building, and brought down power lines.

### Morris County Omaha

	07	1909CST			0 0	? ?	Hail (1.75)
--	----	---------	--	--	-----	-----	-------------

### Freestone County Fairfield

	07	1915CST			0 0	? ?	Hail (0.75)
--	----	---------	--	--	-----	-----	-------------

### Bowie County

15 NE Naples Simms	07	1915CST	short	narrow	0 0	3 ?	Tornado (F1)
	07	1920CST			0 0	? ?	Hail (1.75)
					0 0	5 ?	Thunderstorm Winds (G56)
1 E Simms	07	1922CST			0 0	4 ?	Thunderstorm Winds
25 WSW Texarkana	07	1925CST			0 0	? ?	Hail (1.75)
2 S New Boston	07	1930CST			0 0	3 ?	Thunderstorm Winds
2 SW Redwater	07	1945CST			0 0	3 ?	Thunderstorm Winds
3 S Texarkana	07	1958CST			0 2	4 ?	Thunderstorm Winds (G65)
5 SW Texarkana	07	2006CST			0 0	? ?	Hail (1.00)
8 SW Texarkana	07	2010CST			0 0	? ?	Hail (1.00)

# Storm Data and Unusual Weather Phenomena

October 1992

Location	Date	Time Local/ Standard	Path Length (Miles)	Path Width (Yards)	Number of Persons		Estimated Damage		Character of Storm
					Killed	Injured	Property	Crops	
<b>TEXAS, Northern Cont'd</b>									
At 15 NE Naples, a tornado touched down in soybean field and moved a short distance east, snapping pine trees. At Simms, strong winds lifted a section of the roof from a high school gymnasium, blew windows from classrooms and blew the football field scoreboard down. Numerous trees were also blown down. At 1 E Simms, strong winds blew portions of roof from a barn and 2 houses. At Old Union (25 WSW Texarkana), golf ball hail fell. At both 2 S New Boston and 2 SW Redwater, strong winds blew trees down, blocking the highway. At 3 S Texarkana, strong winds blew numerous trees down, some of which fell upon a mobile home, splitting it in half. Several houses had trees blown down upon them, and power lines were also brought down.									
Smith County Tyler	07	1925CST			0	0	3	?	Thunderstorm Winds
	Strong winds blew several trees down.								
Anderson County Palestine	07	2000CST			0	0	?	?	Hail (1.75) Thunderstorm Winds
	Strong winds uprooted trees.								
Gregg County Easton	07	2010CST			0	0	?	?	Hail (0.75)
Harrison County 5 SW Hallsville	07	2012CST			0	0	3	?	Thunderstorm Winds
	Strong winds blew several trees down.								
Rusk County 5 E Henderson	07	2055CST			0	0	3	?	Thunderstorm Winds
8 SE Henderson	07	2055CST			0	0	3	?	Thunderstorm Winds
	At both locations, strong winds caused numerous trees to be blown down.								
Panola County Dotson	07	2110CST			0	0	3	?	Thunderstorm Winds
	Strong winds downed numerous trees.								
Palo Pinto County Graford	15	1506CST			0	0	?	?	Hail (0.75)
Montague County 1 S Bowie	15	1529CST			0	0	?	?	Hail (1.25)
Bowie	15	1538CST			0	0	?	?	Hail (1.00)
Bowie	15	1545CST			0	0	?	?	Hail (1.25)
1 S Bowie	15	1550CST			0	0	?	?	Hail (1.00)
Belcherville	15	1605CST			0	0	?	?	Hail (0.75)
Jack County Perrin	15	1535CST			0	0	?	?	Hail (1.00)
Parker County Whitt	15	1553CST			0	0	?	?	Hail (1.75) Thunderstorm Winds (G56)
Whitt	15	1600CST			0	0	?	?	Hail (2.75)
2 W Whitt	15	1602CST			0	0	?	?	Hail (1.00)
Whitt	15	1609CST			0	0	?	?	Hail (1.75)
5 SE Whitt	15	1618CST			0	0	?	?	Hail (2.50)
5 N Weatherford	15	1637CST			0	0	2	?	Thunderstorm Winds (G52)
Weatherford	15	1646CST			0	1	5	?	Thunderstorm Winds (G61)
5 E Weatherford	15	1646CST	short	narrow	0	0	?	?	Tornado (F0)
8 E Weatherford	15	1650CST			0	0	?	?	Hail (2.75)
8 ESE Weatherford	15	1652CST	short	narrow	0	0	3	?	Tornado (F1)
9 E Weatherford	15	1652CST			0	0	?	?	Hail (2.75) and Thunderstorm Winds
5 NE Weatherford	15	1815CST			0	0	4	?	Hail (0.75)
6 SW Azle	15	1850CST			0	0	3	?	Hail (1.75) and

# Storm Data and Unusual Weather Phenomena

October 1992

Location	Date	Time Local/ Standard	Path Length (Miles)	Path Width (Yards)	Number of Persons		Estimated Damage		Character of Storm
					Killed	Injured	Property	Crops	

## TEXAS, Northern Cont'd

6 E Weatherford	15	1900CST			0	0	2	?	Thunderstorm Winds (G52)
Aledo	15	1900CST			0	0	4	?	Thunderstorm Winds
					0	0	4	?	Thunderstorm Winds

At 5 N Weatherford, strong winds blew large limbs from trees. At Weatherford strong winds ripped the roof off an apartment building, blew the canopy down at a gas station and blew numerous trees down. One man suffered minor injuries when winds blew him into a barbed wire fence. Also in Weatherford, an elementary school and a middle school both sustained significant wind damage, as roofs were blown from buildings, windows were blown out and trees were blown down. At Hudson Oaks (5 E Weatherford) a tornado touched down briefly, without doing any damage. At 8 ESE Weatherford a tornado touched down briefly and uprooted trees. At Trinity Meadows Racetrack (9 E Weatherford), strong winds blew the tote board down and destroyed a large canopy. At 6 SW Azle, golf ball hail dented automobiles and strong winds brought large tree limbs down. At Parker County Airport (6E Weatherford), strong winds overturned a single-engine airplane. At Aledo, strong winds lifted a section of roof from the Post Office.

## Wise County

Chico	15	1614CST			0	0	?	?	Hail (0.75)
Boyd	15	1614CST			0	0	3	?	Thunderstorm Winds

At Boyd, strong winds blew trees down.

## Tarrant County

White Settlement	15	1723CST			0	0	?	?	Hail (1.75)
4 SW White Settlement	15	1725CST			0	0	?	?	Hail (1.75)
4 NE Benbrook	15	1730CST			0	0	?	?	Hail (0.88)
White Settlement	15	1732CST			0	0	?	?	Hail (1.75)
1 W Fort Worth	15	1743CST			0	0	?	?	Hail (1.00)
Carswell AFB	15	1755CST			0	0	?	?	Hail (1.00)
2 N Azle	15	1817CST			0	0	?	?	Hail (0.75)
Watauga	15	1826CST			0	0	?	?	Hail (0.75)
Fort Worth	15	1835CST			0	0	?	?	Thunderstorm Winds (G52)
2 W Fort Worth	15	1836CST			0	0	?	?	Hail (2.50)
Fort Worth	15	1836CST			0	0	?	?	Hail (1.00)
					0	0	3	?	Thunderstorm Winds
4 E Benbrook	15	1840CST			0	0	?	?	Hail (2.50)
Fort Worth	15	1840CST			0	0	?	?	Hail (1.75)
3 ESE White Settlement	15	1840CST			0	0	6	?	Thunderstorm Winds (G87)
2 SW Fort Worth	15	1841CST			0	0	5	?	Thunderstorm Winds (G70)
6 N Crowley	15	1841CST			0	0	4	?	Thunderstorm Winds
2 S Fort Worth	15	1841CST			0	0	?	?	Hail (1.00)
Fort Worth	15	1845CST-			0	0	?	?	Flash Flooding
		2000CST			0	0	?	?	Hail (1.00)
Grapevine	15	1850CST			0	0	?	?	Thunderstorm Winds (G70)
Fort Worth	15	1855CST			0	0	?	?	Hail (1.50)
Carswell AFB	15	1859CST			0	0	?	?	Hail (2.75)
Arlington	15	1900CST			0	0	?	?	Hail (2.75)
Arlington	15	1910CST			0	0	?	?	Hail (2.75)
6 SE Azle	15	1947CST			0	0	?	?	Hail (1.75)

At 1836CST in the southern part of Fort Worth, strong winds blew signs down. At 3 ESE White Settlement strong winds lifted the roof of an apartment complex clubhouse, which caused one of its walls to collapse. Several roofs were peeled back, fences were downed and trees were uprooted, many of which fell upon power lines. At 2 SW Fort Worth at 1841CST, strong winds blew trees and signs down and lifted shingles from roofs. At 6 N Crowley, strong winds blew signs and trees down and removed roofing from roofs. Heavy rains resulted in street flooding in Fort Worth.

## Cooke County

1 S Valley View	15	1845CST			0	0	?	?	Hail (1.00)
-----------------	----	---------	--	--	---	---	---	---	-------------

## Denton County

2 E Sanger	15	1845CST			0	0	?	?	Hail (0.88)
------------	----	---------	--	--	---	---	---	---	-------------

## Dallas County

NAS Dallas	15	1855CST			0	0	?	?	Hail (1.00)
------------	----	---------	--	--	---	---	---	---	-------------

# Storm Data and Unusual Weather Phenomena

October 1992

Location	Date	Time Local/ Standard	Path Length (Miles)	Path Width (Yards)	Number of Persons		Estimated Damage		Character of Storm
					Killed	Injured	Property	Crops	
<b>TEXAS, Northern Cont'd</b>									
Grand Prairie	15	1922CST			0	0	?	?	Hail (0.75)
NAS Dallas	15	1932CST			0	0	?	?	Hail (1.00)
Oak Cliff	15	1940CST			0	0	?	?	Hail (0.88)
Mesquite	15	2010CST			0	0	?	?	Hail (0.75)
Mesquite	15	2028CST			0	0	?	?	Hail (1.50)
Mesquite	15	2140CST			0	0	3	?	Thunderstorm Winds
At Mesquite at 2140CST, strong winds blew tree limbs and power lines down.									
Hunt County									
Greenville	15	2040CST			0	0	?	?	Thunderstorm Winds (G52)
Kaufman County									
Forney	15	2030CST			0	0	?	?	Thunderstorm Winds (G52)
Kaufman	15	2230CST			0	0	?	?	Hail (1.75)
Terrell	15	2250CST			0	0	4	?	Thunderstorm Winds
At Terrell, strong winds destroyed a billboard and carried a 4 x 8-inch member from it to a nearby nursing home, where it was driven through the roof and ceiling of a resident's room. A shop, fireworks stand and travel trailer were also destroyed, and power lines were blown down.									
Rains County									
6 SW Emory	15	2110CST			0	0	?	?	Thunderstorm Winds (G52)
Hopkins County									
Cumby	15	2105CST			0	0	3	?	Thunderstorm Winds (G70)
					0	0	4	?	Lightning
Sulphur Springs	15	2130CST			0	0	4	?	Thunderstorm Winds (G53)
2 S Sulphur	15	2130CST			0	0	4	?	Thunderstorm Winds
Springs									
Como	15	2135CST			0	0	4	?	Thunderstorm Winds (G70)
At Cumby, strong winds blew trees down, one of which brought down a transformer. Also at Cumby, lightning struck a house setting it afire, before it was brought quickly under control. At Sulphur Springs, winds in excess of 60 mph blew trees, utility poles and power lines down. At 2 S Sulphur Springs, strong winds lifted the roofs from two hay barns, a shed and a milking barn. At Como, strong winds downed trees and power lines.									
Franklin County									
Mount Vernon	15	2210CST			0	0	?	?	Thunderstorm Winds (G52)
Titus County									
Winfield	15	2220CST			0	0	3	?	Thunderstorm Winds (G56)
Strong winds blew trees down.									
Bowie County									
2 S Darden	15	2222CST			0	0	?	?	Hail (0.88)
					0	0	3	?	Thunderstorm Winds (G52)
2 SW Simms	15	2230CST			0	0	?	?	Hail (1.00)
At 2 S Darden, strong winds downed several trees.									
Marion County									
2 SE Lassater	15	2235CST			0	0	3	?	Thunderstorm Winds
4 NW Jefferson	15	2245CST			0	0	3	?	Thunderstorm Winds
8 W Kellyville	15	2255CST			0	0	3	?	Thunderstorm Winds
At 2 SE Lassater, strong winds blew several trees down. At 4 NW Jefferson, strong winds blew several trees down and lifted the roofs from two sheds. At 8 W Kellyville, several trees were blown down.									
Cass County									
4 N Hughes Springs	15	2235CST			0	0	3	?	Thunderstorm Winds
3 E Avinger	15	2240CST			0	0	?	?	Thunderstorm Winds (G52)
3 S Atlanta	15	2250CST			0	0	?	?	Hail (1.00)
4 S Kildare	15	2255CST			0	0	?	?	Hail (0.88)
					0	0	3	?	Thunderstorm Winds

# Storm Data and Unusual Weather Phenomena

October 1992

Location	Date	Time Local/ Standard	Path Length (Miles)	Path Width (Yards)	Number of Persons		Estimated Damage		Character of Storm
					Killed	Injured	Property	Crops	

## TEXAS, Northern Cont'd

At 4 N Hughes Springs, strong winds lifted a section of a barn's roof. At 3 E Avinger, strong winds blew numerous trees down. At 4 S Kildare, strong winds caused several trees to be blown down.

<b>Harrison County</b>									
1 N Woodlawn	15	2255CST			0	0	?	?	Hail (0.88) and
					0	0	3	?	Thunderstorm Winds
5 WSW Karnack	15	2305CST			0	0	?	?	Hail (0.75)

At 1 N Woodlawn, strong winds downed numerous trees.

<b>Taylor County</b>									
Abilene Municipal Airport	28	1903CST			0	0	3	?	Thunderstorm Winds
Abilene	28	1915CST			0	0	2	?	Hail (1.50)
Abilene	28	1930CST			0	0	3	?	Thunderstorm Winds (G52)

At Abilene Municipal Airport, strong winds damaged a hangar. At Abilene, large hail broke the windshield of a pickup truck. At 1930CST, strong winds blew power lines down.

<b>Callahan County</b>									
Clyde	28	1945CST			0	0	3	?	Thunderstorm Winds (G52)

Strong winds downed trees and power lines.

<b>Wood County</b>									
Quitman	29	1612CST			0	0	?	?	Hail (1.00)
Quitman	29	1620CST			0	0	2	?	Thunderstorm Winds
8 E Quitman	29	1630CST			0	0	?	?	Hail (1.00)
5 N Hawkins	29	1630CST			0	0	3	?	Thunderstorm Winds
1 E Quitman	29	1642CST			0	0	?	?	Hail (1.00)

At Quitman strong winds blew large tree limbs down. At 5 N Hawkins strong winds uprooted numerous trees and destroyed an abandoned building.

<b>Upshur County</b>									
1 W Rosewood	29	1642CST			0	0	?	?	Hail (0.75)
13 W Gilmer	29	1700CST			0	0	?	?	Hail (0.75)
Glenwood	29	1710CST			0	0	?	?	Hail (0.75)
3 SW Gilmer	29	1715CST			0	0	3	?	Thunderstorm Winds
Gilmer	29	1800CST			0	0	3	?	Thunderstorm Winds

At 3 SW Gilmer, strong winds uprooted trees. At Gilmer, strong winds brought trees down.

<b>Van Zandt County</b>									
Canton	29	1715CST			0	0	?	?	Thunderstorm Winds (G52)
3 N Van	29	1800CST			0	0	?	?	Hail (0.75)

<b>Gregg County</b>									
2 W Judson	29	1733CST			0	0	?	?	Hail (1.50)
					0	0	3	?	Thunderstorm Winds
5 SW Kilgore	29	1905CST			0	0	?	?	Hail (1.00)

At 2 W Judson, strong winds blew numerous trees down.

<b>Harrison County</b>									
4 NW Hallsville	29	1801CST			0	0	?	?	Hail (1.75)
6 NE Hallsville	29	1803CST			0	0	?	?	Hail (1.00)
5 S Harlenton	29	1808CST			0	0	3	?	Thunderstorm Winds (G50)
10 WNW Marshall	29	1835CST			0	0	3	?	Thunderstorm Winds (G65)
									Funnel Cloud
2 W Marshall	29	1840CST			0	0	?	?	Hail (1.00)
					0	0	?	?	Thunderstorm Winds (G50)
Marshall	29	1850CST			0	0	4	?	Thunderstorm Winds
3 W Scottsville	29	1858CST			0	0	?	?	Hail (1.00)
					0	0	3	?	Thunderstorm Winds (G50)

## Storm Data and Unusual Weather Phenomena

October 1992

Location	Date	Time Local/Standard	Path Length (Miles)	Path Width (Yards)	Number of Persons Killed	Injured	Estimated Damage Property	Crops	Character of Storm
----------	------	---------------------	---------------------	--------------------	--------------------------	---------	---------------------------	-------	--------------------

### TEXAS, Northern Cont'd

3 ESE Marshall	29	1918CST			0	0	3	?	Thunderstorm Winds (G52)
4 W Waskom	29	1942CST			0	0	3	?	Thunderstorm Winds (G56)

At 5 S Harlenton, strong winds blew numerous trees down. At 10 WNW Marshall, thunderstorm winds blew several trees down. At Marshall, strong winds blew trees and power lines down. At 3 W Scottsville, strong winds blew trees down along U.S. Interstate 80. At 3 ESE Marshall, strong winds downed numerous trees. At 4 W Waskom, strong winds toppled several trees.

Smith County 10 E Tyler	29	1825CST			0	0	?	?	Hail (1.75)
McCulloch County Brady	29	1845CST			0	0	4	?	Thunderstorm Winds

Strong winds blew trees and power lines down, and destroyed many awnings at several convenience stores.

Rusk County 5 NE Overton	29	1908CST			0	0	?	?	Hail (1.75)
Laird Hill	29	1915CST			0	0	?	?	Hail (1.75)
Overton	29	1915CST			0	0	?	?	Hail (1.00)

Comanche County 4 E De Leon	31	1715CST			0	0	?	?	Hail (1.75)
Wise County 12 ENE Decatur	31	1805CST			0	0	?	?	Hail (1.00)
6 E Decatur	31	1840CST	short	narrow	0	0	?	?	Tornado (F0)

At 6 E Decatur, a tornado touched down briefly in open country.

Erath County 5 NE Stephenville	31	1811CST			0	0	?	?	Hail (1.00)
Cooke County Valley View	31	1850CST			0	0	?	?	Hail (1.00)
Somervell County 5 NW Glen Rose	31	1900CST			0	0	?	?	Thunderstorm Winds (G52)
Denton County Sanger	31	1900CST			0	0	?	?	Hail (0.75)
Denton	31	1912CST			0	0	?	?	Thunderstorm Winds (G59)
Hood County 10 SE Granbury	31	1900CST			0	0	4	?	Thunderstorm Winds

Strong winds blew the roof from a house.

Johnson County Venus	31	2000CST			0	0	4	?	Thunderstorm Winds
-------------------------	----	---------	--	--	---	---	---	---	--------------------

Strong winds downed trees and power lines.

Ellis County Midlothian	31	2015CST			0	0	2	?	Thunderstorm Winds
Red Oak	31	2030CST			0	0	?	?	Hail (0.75)

At Midlothian, strong winds blew large tree limbs down and blocked streets.

Dallas County Dallas	31	2045CST			0	0	3	?	Thunderstorm Winds
-------------------------	----	---------	--	--	---	---	---	---	--------------------

In the southeastern part of Dallas, strong winds blew power lines down.

Coleman County Santa Anna	31	2232CST			0	0	?	?	Hail (0.75)
Jack County Jacksboro	31	2245CST			0	0	4	?	Thunderstorm Winds
15 NE Jacksboro	31	2250CST			0	0	4	?	Lightning

At Jacksboro, strong winds blew down trees, utility poles and power lines. At 15 NE Jacksboro, lightning struck three oil storage tanks, causing them to explode.

# Storm Data and Unusual Weather Phenomena

October 1992

Location	Date	Time Local/ Standard	Path Length (Miles)	Path Width (Yards)	Number of Persons		Estimated Damage		Character of Storm
					Killed	Injured	Property	Crops	
<b>TEXAS, Northern Cont'd</b>									
<b>Palo Pinto County</b> 2 S Mineral Wells	31	2300CST			0	0	2	?	Thunderstorm Winds
	Strong winds blew large tree limbs down on U.S. 281.								
<b>Wise County</b> Alvord	31	2315CST			0	0	4	?	Thunderstorm Winds
	Strong winds lifted the roof from a house, destroyed a garage and a greenhouse and blew trees down. A gas station sign was blown down and a southbound tractor-trailer on the north side of town was overturned.								
<b>Tarrant County</b> 2 N Azle	31	2340CST			0	0	?	?	Thunderstorm Winds (G61)
Fort Worth	31	2344CST			0	0	3	?	Thunderstorm Winds
	In the western part of Fort Worth, strong winds downed power lines.								
<b>Johnson County</b> Cleburne Municipal Airport	31	2353CST			0	0	?	?	Thunderstorm Winds (G52)
<b>Dallas County</b> Dallas/Fort Worth Airport	31	2359CST			0	0	?	?	Thunderstorm Winds (G59)
<b>TEXAS, Southern</b>									
<b>Travis County</b> Austin	07	1940CST			0	0	0	0	Hail (0.75)
	Dime-size hail was reported at Brentwood Street and North Lamar Boulevard, by a TV-24 Weather Watcher.								
<b>Harris County</b> Spring	16	0730CST			0	35	0	0	Lightning
	Lightning struck Dueitt Middle School football field during practice. Thirty-four students and 1 coach were taken to the hospital and released later in the day.								
<b>Calhoun County</b> Port Lavaca	16	1645CST			0	0	3	0	Thunderstorm Winds
	Several power lines were reported down in the northern part of the County. Power was knocked out to the fair grounds in Port Lavaca.								
<b>Bastrop County</b> Bastrop	16	1300CST			0	0	5	4	Thunderstorm Winds
	Several large trees were uprooted in the City, large limbs fell onto roofs and cars throughout the City. Windows were blown out of the China Chef Restaurant and the Ladies of Charity store. The roofs of the First Baptist Church, Bastrop Middle School and an auto supply store all had major wind damage.								
<b>Val Verde County</b> 2 W Del Rio	31	1850CST			0	0	5	2	Thunderstorm Winds
	Several mobile homes were damaged, and one was over turned in the Los Campos area of the County. One permanent home was damaged, several road signs and power lines were blown down. A few trees were uprooted.								
<b>Kinney County</b> 20 W Brackettville	31	2006CST			0	0	3	0	Hail (1.75)
	Quarter to golf ball-size hail was reported in the west part of the County. Major damage was caused to a family car driving along Highway 90.								



# Storm Data and Unusual Weather Phenomena

October 1992

Location	Date	Time Local/ Standard	Path Length (Miles)	Path Width (Yards)	Number of Persons		Estimated Damage		Character of Storm
					Killed	Injured	Property	Crops	
<b>TEXAS, Western</b>									
<b>Hockley County</b>									
Levelland	07	1330CST			0	0	2	1	High Winds
Strong northerly winds behind a cold front damaged fences and uprooted a tree in Levelland.									
<b>Tom Green County</b>									
San Angelo	31	2121CST			0	0	2	0	Thunderstorm Winds (G59)
San Angelo	31	2131CST			0	0	0	0	Hail (0.75)
Downburst winds gusted to 68 mph at the National Weather Service Office in San Angelo. Amateur radio spotters reported dime-size hail in southwestern San Angelo. No significant damage resulted.									
<b>Terrell County</b>									
1 E Dryden	31	2253CST			0	0	3	1	Thunderstorm Winds
Downburst winds damaged three carports just east of Dryden, according to the Terrell County Sheriff's Office. The winds also damaged several trees in the area.									
<b>UTAH</b>									
<b>Cache County</b>									
Logan	06	1245MST			0	0	0	0	Hail (1.00)
Thunderstorms developed in extreme northern Utah along a cold front. A spotter at Utah State University in Logan observed the hail. The hail was brief, and the thunderstorm was short-lived as it quickly moved into the mountains and weakened. No damage was reported.									
<b>Utah County</b>									
Spanish Fork	27	2020MST			0	0	3	0	Lightning
Salem	27	2045MST			0	1	2	0	Lightning
In Spanish Fork, lightning struck a trampoline, and left a large hole in it. The ensuing thunder shattered some windows in a nearby house. In Salem, an eighth-grade girl was talking on the telephone during a thunderstorm. Lightning struck a nearby transformer. This sent a power surge through the telephone. The telephone was burned, and the girl sustained minor injuries to her ear.									
<b>VERMONT</b>									
VTZ001-002-004-005	16	2100EST- 2330EST			0	0	5	?	High Wind
One of the strongest October cold fronts in recent memory caused scattered damage across parts of Vermont. Most of the damage was confined to downed trees and power lines. Central Vermont appeared to be hardest hit with 1660 customers without power in Rutland county at the time of frontal passage around 2115EST.									
<b>VIRGINIA</b>									
<b>Patrick County</b>									
Stuart	03	2030EST			0	0	5	0	Wind
A silo, weakened and leaning from wind and rain a couple of days prior, fell during strong winds. It knocked over another silo and destroyed a small barn.									
<b>Virginia Beach</b>									
	05	0600EST			0	0	3	0	High Wind
Strong winds blew over a 400 pound church steeple.									
<b>Page County</b>									
Stanley	24	1826EST			0	0	5	0	Lightning
Lightning struck the steeple of a church in Stanley and caused a fire which did \$100,000 damage.									
<b>WASHINGTON</b>									
<b>Wa. Coast</b>									
WAZ004,005	20	0400			0	0	?	0	High Winds
A Pacific cold front moving onshore caused strong winds of 30 to 40 miles per hour to occur along the coast. Winds to 50 mph were reported over the water. A small power outage occurred about 0400 near the town of Forks on the north coast.									

# Storm Data and Unusual Weather Phenomena

October 1992

Location	Date	Time Local/ Standard	Path Length (Miles)	Path Width (Yards)	Number of Persons		Estimated Damage		Character of Storm
					Killed	Injured	Property	Crops	

## WEST VIRGINIA

<b>WVZ ALL Statewide</b>	09	1850EST			0	0	0	0	Meteor
------------------------------	----	---------	--	--	---	---	---	---	--------

Despite the light from a nearly full moon, many residents saw a huge fireball with tail streak across the sky for 5 to 10 seconds.

<b>WVZ009 Northern Mountains</b>	19	0100EST- 0600EST			0	0	0	0	Snow
--	----	---------------------	--	--	---	---	---	---	------

One to three inches of snow fell.

<b>WVZ ALL Statewide</b>	20	0600EST- 0700EST			0	0	0	0	Record Cold
------------------------------	----	---------------------	--	--	---	---	---	---	-------------

Dawn temperatures were mostly in the teens and 20s. Thomas had 11°F degrees, Cheat Bridge and Gladys saw 12°F degrees. The 14°F degrees at Lewisburg was the coldest in the continental United States for a major community. Elkins had a low of 15. Charleston was the coldest for so early in the autumn with 23°F degrees. Both Parkersburg and Huntington recorded 24°F degrees.

<b>Roane County Speed</b>	24	1600EST			0	0	2	0	Hail (0.75)
-------------------------------	----	---------	--	--	---	---	---	---	-------------

A car windshield was cracked.

<b>Braxton County Sutton</b>	24	1615EST			0	0	2	0	Thunderstorm Winds
----------------------------------	----	---------	--	--	---	---	---	---	--------------------

Several large tree branches were blown down, resulting in power outages.

<b>Lewis County Walkersville</b>	24	1620EST			0	0	0	0	Hail (0.88)
--------------------------------------	----	---------	--	--	---	---	---	---	-------------

<b>Webster County Webster Springs</b>	24	1645EST			0	0	0	0	Hail (0.75)
---	----	---------	--	--	---	---	---	---	-------------

<b>Fayette County Cotton Hill</b>	24	1725EST			0	10	4	0	Thunderstorm Winds
<b>Mossy</b>	24	1730EST			0	0	0	0	Hail (0.75)

Uprooted trees fell onto at least 3 moving sight-seeing cars of a special train excursion through the New River Gorge. Several dome windows were broken. Ten people were examined then released from a hospital after being showered with glass. The damaged rail cars dated from the 1940s and were owned by individuals and a historical society.

## WISCONSIN

<b>Juneau County 7 ESE Mauston</b>	08	1430CST	2.0	100	0	0	5	0	Tornado (F1)
<b>1 ESE Mauston</b>	08	1435CST			0	0	4	0	Thunderstorm Winds

<b>Buffalo County 1 N Mondovi</b>	08	1615CST	0.5	50	0	0	4	0	Tornado (F0)
---------------------------------------	----	---------	-----	----	---	---	---	---	--------------

<b>Waushara County Hancock</b>	08	1623CST			0	0	?	0	Hail (0.75)
<b>5 NE Wild Rose</b>	08	1648CST	0.75	400	0	0	5	0	Tornado (F1)

<b>Portage County Almond</b>	08	1700CST			0	0	?	0	Hail (1.00)
<b>4 NE Blaine</b>	08	1712CST	2.0	100	0	0	5	0	Tornado (F1)
<b>2 S Junction City</b>	08	1735CST			0	0	4	0	Thunderstorm Winds

<b>Fond du Lac County Rosendale</b>	08	1748CST			0	0	0	0	Funnel Cloud
---	----	---------	--	--	---	---	---	---	--------------

<b>Marathon County Knowlton</b>	08	1750CST			0	0	0	0	Funnel Cloud
-------------------------------------	----	---------	--	--	---	---	---	---	--------------

Several severe thunderstorms spawned four tornadoes moving northwest, generated damaging winds, and dropped hail up to 1 inch in diameter across central and west central portions of Wisconsin. A tornado skipped along a 2 mile path in Juneau County about 7 miles east to southeast of Mauston damaging four outbuildings, three mobile homes, and many trees. A weak tornado damaged a pole

# Storm Data and Unusual Weather Phenomena

October 1992

Location	Date	Time Local/ Standard	Path Length (Miles)	Path Width (Yards)	Number of Persons		Estimated Damage		Character of Storm
					Killed	Injured	Property	Crops	

## WISCONSIN Cont'd

shed, silo, and several trees just north of Mondovi in Buffalo County. About \$75,000 in damage was caused by a tornado which struck the Gilbert Lake area about 5 miles northeast of Wild Rose in Waushara County. Fifteen homes and buildings were damaged, as well as 500 oak and pine trees. A tornado touched down about 4 miles northeast of Blaine in Portage County and tracked about 2 miles across Lanark Township. Ten homes and buildings were damaged, a barn and garage destroyed, and numerous trees were knocked down.

## WYOMING

WYZ004	13	2000MST-							
Cody	14	0600MST			0	0	0	0	Heavy Snow

Heavy snow during the night amounted to 7 to 8 inches in the Cody area.

## ALASKA, Northern

None reported.

## ALASKA, Southern

Bethel									
Cold Bay	05				?	?	?	?	Record lows.

A report of 15°F degrees at Bethel broke the old daily record of 16°F set in 1956. A record of 27°F degrees was reported at Cold Bay set a new daily record. The old record was set in 1971.

Yukon Kuskokwim									
Delta, Nunivak	05-06				0	?	?	?	High Wind

A large 975 mb low moved from the Gulf of Anadyr across the Chukotsk Peninsula and into the Chukchi Sea and deepened to 960 mb. The strong frontal system and trough extending south combined with 1020-1030 mb+ pressures over eastern Alaska to produce strong southerly winds. Mekoryuk recorded sustained winds of 52 mph with a peak gust of at least 64 mph. When the front passed Cold Bay winds gusted to 66 mph. King Salmon reported a peak gust of 51 mph. The peak wind gust of 77 mph recorded at Bethel was the highest ever recorded. The previous record was 59 mph set in 1983. Damage in the Bethel and other Delta villages was in the form of lost siding and roofing.

Kodiak Island		09	1700AST						
					?	?	?	?	1st Snowfall

The first snowfall of the season started falling at Kodiak State Airport at 5:05 pm AST and lasted for 45 minutes. No measurable accumulation fell.

Kodiak Island		14							
					0	0	?	?	Rough Seas

Three consecutive 12 foot waves washed over the port quarter of a 72 foot trawler causing the vessel to sink near the Trinity Islands 70 miles southwest of Kodiak Island.

Matanuska Valley		18							
					?	?	?	?	High Winds

A strong low pressure area in the Gulf of Alaska combined with strong high pressure over northwest Canada and strong winds aloft to produce wind gusts to 61 mph in the Palmer area with even stronger gusts over parts of the Matanuska Valley. The winds picked up and blew glacial dust and volcanic ash into the anchorage area in the form of a cloud that was thick enough at times to block out the sun. Trees falling on power lines left hundreds of residents without power from Chickaloon to Big Lake and including parts of Palmer and Wasilla. Shortly afternoon, 20,000 of Matanuska Electric Association's 20,700 customers lost power for almost two hours. No major damage was reported across the Valley. Minor damage, such as toppled signs and twisted traffic lights, were spotted the in Wasilla and Palmer areas.

Aleutians		22							
Alaska Peninsula					0	?	?	?	High Winds
Bristol Bay									

# Storm Data and Unusual Weather Phenomena

October 1992

Location	Date	Time Local/ Standard	Path Length (Miles)	Path Width (Yards)	Number of Persons Killed Injured	Estimated Damage Property Crops	Character of Storm
----------	------	----------------------------	---------------------------	--------------------------	--	---------------------------------------	--------------------

## ALASKA Southern Cont'd

An intense low pressure system tracked across the southern Bering Sea and moved to lie just north of Cape Newenham. This storm produced wind gusts to 60 mph across the Eastern Aleutians, Alaska Peninsula and Bristol Bay.

**Anchorage  
Eagle River**

25							<b>High Winds</b>
----	--	--	--	--	--	--	-------------------

A moderate weather front moving through Cook Inlet produced wind gusts between 25 and 60 mph over much of the area from Potter Marsh to Chugiak. Wind speeds near 60 mph were reported at Glen Alps, a gust of 53 mph was clocked at Fort Richardson, and a peak gust of 36 mph occurred at Anchorage International Airport. Unofficial speeds between 40 and 60 mph were reported from many other locations in east Anchorage, Eagle River, as far north as Chugiak, and earlier in the evening near platform "Bruce", a drill rig in the inlet.

**Anchorage  
Matanuska Valley  
Western Copper  
River Basin**

26-27							<b>Heavy Snow</b>
-------	--	--	--	--	--	--	-------------------

Morning rain changed to wet snow by midday on the 26th and by early morning on the 27th one of the heaviest 24 hour October snowfalls was ending. Snow-laden trees and branches falling onto utility lines resulted in the loss of power to 20,000 customers from Seward to Anchorage. Anchorage schools closed due to the snow. Snowfall totals ranged from 11.50 inches at Anchorage International Airport to 16-20 inches across Eagle River and parts of the Matanuska and Susitna Valleys.

## ALASKA, Southeastern

**AKZ012  
Lynn Canal-  
Glacier Bay**

17- 18	Late evening- Early morning						<b>High Wind</b>
-----------	--------------------------------	--	--	--	--	--	------------------

**AKZ015  
Coastal Southeast  
Alaska**

17- 18	Late evening- Early morning						<b>High Wind</b>
-----------	--------------------------------	--	--	--	--	--	------------------

A strong north Pacific low moved into the southeastern Gulf of Alaska, while high pressure persisted to the north over the Yukon territory. This resulted in a very strong pressure gradient over southeast Alaska producing strong and gusty winds over portions of the panhandle. The strongest winds occurred ahead of the associated occluded front, with north to easterly winds. Eldrod Rock in the northern Lynn Canal and Cape Spencer on the northern coast of the panhandle both reported sustained winds over 35 knots for several hours with gusts over 40 knots.

**AKZ014  
Southern southeast  
Alaska**

19	<b>Morning</b>						<b>High Wind</b>
----	----------------	--	--	--	--	--	------------------

The strong low had persisted in the eastern Gulf of Alaska after the high winds of the previous day. After the occlusion had passed, southern southeast Alaska also experienced some very strong and gusty winds. Metlakatla Harbor as well as the Ketchikan Roof had southeasterly gusts over 50 knots with one gust at the Ketchikan Roof of 80 knots. The winds diminished during the afternoon, as the front moved out of the area.

## HAWAII

**Oahu**

11	2100HST						<b>Flash Flooding</b>
----	---------	--	--	--	--	--	-----------------------

Rainshowers, locally heavy, caused minor flash flooding along the windward side of Oahu.

**Kauai**

12	1300HST						<b>Flash Flooding</b>
----	---------	--	--	--	--	--	-----------------------

Heavy rains on Kauai caused several streams to overflow.

**Oahu**

12	2300HST						<b>Flash Flooding</b>
----	---------	--	--	--	--	--	-----------------------

Localized downpours caused mostly minor flash flooding around the Honolulu area at places like Waikiki, Kaimuki, and Waipahu.

## Storm Data and Unusual Weather Phenomena

October 1992

Location	Date	Time Local/ Standard	Path Length (Miles)	Path Width (Yards)	Number of Persons		Estimated Damage		Character of Storm
					Killed	Injured	Property	Crops	
<b>HAWAII Cont'd</b>									
Oahu	14	1545HST			0	0	0	0	Funnel Clouds
			There were several sightings of funnel clouds over sugar cane fields of central Oahu from Wheeler Field to Wahiawa to Waialua areas. One may have touched down briefly in the Poamoho section.						
Hawaii	16	0200HST			0	0	4	0	Flash Flooding
			Showers in the Kona area caused minor flooding.						
<b>PACIFIC</b>									
Guam	21	1000LST			0	0	0	0	Typhoon Brian
			Typhoon Brian was the second typhoon this season to strike Guam. Brian with sustained winds at 90 mph was much lighter than typhoon Omar of late August. Brian quickly blew over the less populated southern tip of the island with damage mainly to power lines. No deaths or injuries reported, and 4000 people spent time in shelters during the storm.						
Wake Island	28	0400UTC			0	0	5	0	Typhoon Dan
			Typhoon Dan on a northwesterly course moved very close to Wake Island passing just south and west with winds measured at 105 knots and pressure at 980 mb. No major damage occurred though there were many instances of roof damage. Some road damage was reported, and the airport runways had debris and rocks thrown on them by the severe wave action coming from southeasterly directions. There were no injuries.						
<b>PUERTO RICO</b>									
Mayaguez	01	1615AST			0	0	0	0	Waterspout
			A pilot reported a waterspout 3 miles west of Mayaguez.						
PRZ004	01	1300AST 1800AST			0	0	4	0	Thunderstorm Winds Urban Flooding
			Heavy rains and strong winds over the western part of the island left hundreds without electricity. There were various roads and streets with minor flooding, other roads had damages due to mudslides, and several trees fell by the winds knocking out power for many families.						
PRZ003- 004-005	10	1500AST- 2100AST			0	0	3	0	Flash Flood
			Around two inches of rain fell in the southwest portion of the island. Bucana and Blanco Rivers in Ponce and Lares respectively overflowed flooding adjacent areas. There were mudslides in San German and Ponce which made a few roads impassable. Cabo Rojo and Hormiguero had standing water and fallen trees along streets.						
Lares	17	1500AST			0	0	3	0	Flash Flood
			Five residences in Lares were affected by flood waters of Creek El Anon. Two mudslides on Road #124 and #128 made them impassable.						
Lares, San Sebastian	18	1400AST			0	0	4	0	Flash Flood
			Three to four inches of water during the afternoon fell in these municipalities. In San Sebastian thirty residences were flooded and people refused to evacuate. Residents of Sector La Vega near Lago Guajataca were incommunicated for near 2 weeks due to a damaged bridge by flood waters. There was a major mudslide in Lares along Road #124.						
Yauco	23	1900AST			1	0	3	0	Flash Flood
			A man that tried to drive across a flooded bridge in the waters of Rio Loco was swept away by the current into the river and drowned. Heavy rains caused Rio Loco to overflow its banks on route #368, bridge Siete Bocas. (M68V)						

## Storm Data and Unusual Weather Phenomena

October 1992

Location	Date	Time Local/ Standard	Path Length (Miles)	Path Width (Yards)	Number of Persons		Estimated Damage		Character of Storm
					Killed	Injured	Property	Crops	

### PUERTO RICO Cont'd

Carolina	29	0945AST			0	0	0	0	Funnel Cloud
A pilot from the P.R. National Guard reported three funnel clouds over water moving from Loiza to Isla Verde.									

Utuado	31	1500AST			0	0	4	0	Flash Flood
Five houses in Barrio Vivi and Caonillas were affected by flood waters due to a swollen creek. There were around 40 minor mudslides along streets and roads of this municipality.									

### U.S. VIRGIN ISLANDS

St. Thomas		1830AST			0	0	0	0	Urban Flooding
Near two inches of rain flooded the northern part of the island. There were standing water along areas of poor drainage.									

STORM DAMAGE CATAGORIES

REFERENCE NOTES

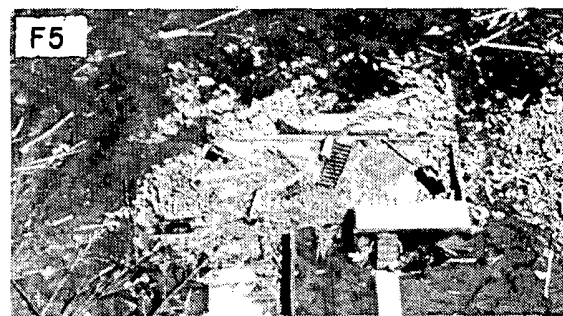
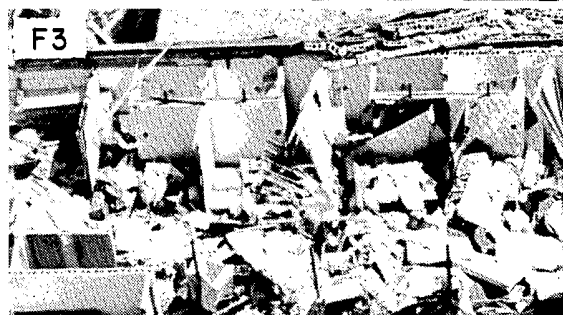
- 1 Less than \$50
- 2 \$50 to \$500
- 3 \$500 to \$5,000
- 4 \$5,000 to \$50,000
- 5 \$50,000 to \$500,000
- 6 \$500,000 to \$5 Million
- 7 \$5 Million to \$50 Million
- 8 \$50 Million to \$500 Million
- 9 \$500 Million to \$5 Billion

- 0/Blank None reported.
- \* Miles instead of yards.
- \*\* Yards instead of miles.
- @ Includes heavy sleet storm.
- # Freezing drizzle and freezing rain, commonly known as glaze.
- ≠ Report incomplete.
- ≠≠ Report not received.
- o/c Indicates Crop Damage amount is included in the value given for property damage.

When reports are not received or are incomplete, the Storm Summary National Death and Injury totals may also be incomplete.

Definition of Fujita Tornado Scale (F scale)

- (F0) Gale tornado (40-72 mph): Light damage  
Some damage to chimneys; break branches off trees; push over shallow-rooted trees; damage sign boards.
- (F1) Moderate tornado (73-112 mph): Moderate damage  
The lower limit (73 mph) is the beginning of hurricane wind speed; peel surface off roofs; mobile homes pushed off foundations or overturned; moving autos pushed off the roads.
- (F2) Significant tornado (113-157 mph): Considerable damage  
Roofs torn off frame houses; mobile homes demolished; boxcars pushed over; large trees snapped or uprooted; light-object missiles generated.
- (F3) Severe tornado (158-206 mph): Severe damage  
Roofs and some walls torn off well-constructed houses; trains overturned; most trees in forest uprooted; heavy cars lifted off ground and thrown.
- (F4) Devastating tornado (207-260 mph): Devastating damage  
Well-constructed houses leveled; structure with weak foundation blown off some distance; cars thrown and large missiles generated.
- (F5) Incredible tornado (261-318 mph): Incredible damage  
Strong frame houses lifted off foundations and carried considerable distance to disintegrate; automobile-sized missiles fly through the air in excess of 100 m; trees debarked; incredible phenomena will occur.
- (F6-F12) (319 mph to Mach 1, the speed of sound):  
The maximum wind speeds of tornadoes are not expected to reach the F6 wind speeds.




---

(F0+F1) Weak Tornado  
(F2+F3) Strong Tornado  
(F4+F5) Violent Tornado

---

From J. Atmos. Sci., August 1981, p. 1517-1519

# STORM SUMMARY

Oct 1992

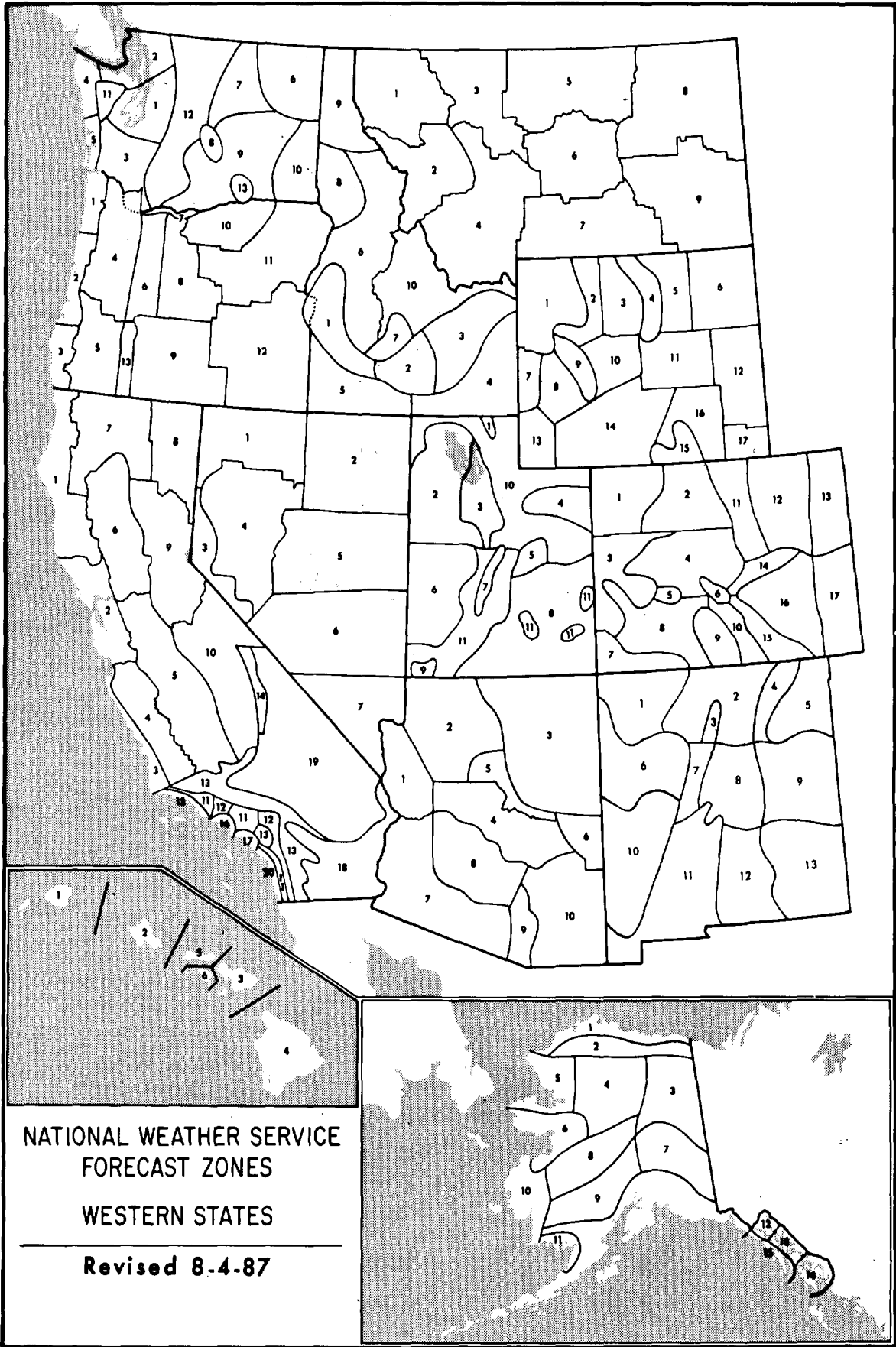
TYPE	ALABAMA	ARIZONA	ARKANSAS	CALIFORNIA	COLORADO	CONNECTICUT	DELAWARE	FLORIDA	GEORGIA	IDAHO	ILLINOIS	INDIANA	IOWA	KANSAS	KENTUCKY	LOUISIANA	MAINE	MARYLAND & D.C.	MASSACHUSETTS	MICHIGAN	MINNESOTA	MISSISSIPPI	MISSOURI	MONTANA	NEBRASKA	NEVADA	NEW HAMPSHIRE
<b>TORNADOES</b>						0	0																				
Number		3						10	1			4		1								2					0
Days		1						4	1			1		1								2					0
Deaths		0						4	0			0		0								1					0
Injuries		0						7	0			9		0								2					0
Property Damage		0						7	0			6		0								0					0
Crop Damage		0						0	0			4		2								0					0
<b>HAIL</b>																											
Deaths		0																				0					
Injuries		0																				0					
Property Damage		0																				0					
Crop Damage		0																				0					
<b>THUNDERSTORM WINDS</b>																											
Deaths	0	0	0					0	0			0		0	0						0	0	0				
Injuries	0	0	0					0	0			0		0	0						0	0	0				
Property Damage	0	0	0					0	0			0		0	0						0	0	0				
Crop Damage	0	0	0					0	0			0		0	0						0	0	0				
<b>HIGH WINDS</b>																											
Deaths																											
Injuries																											
Property Damage																											
Crop Damage																											
<b>LIGHTNING</b>																											
Deaths																											
Injuries																											
Property Damage																											
Crop Damage																											
<b>FLASH FLOODS</b>																											
Deaths																											
Injuries																											
Property Damage																											
Crop Damage																											
<b>FLOODS</b>																											
Deaths																											
Injuries																											
Property Damage																											
Crop Damage																											
<b>HEAVY SNOWSTORMS AND BLIZZARDS a</b>																											
Deaths																											
Injuries																											
Property Damage																											
Crop Damage																											
<b>ICE STORMS #</b>																											
Deaths																											
Injuries																											
Property Damage																											
Crop Damage																											
<b>HURRICANES AND TROPICAL STORMS</b>																											
Deaths																											
Injuries																											
Property Damage																											
Crop Damage																											
<b>ALL OTHERS</b>																											
Deaths																											
Injuries																											
Property Damage																											
Crop Damage																											



# STORM SUMMARY

Oct 1992

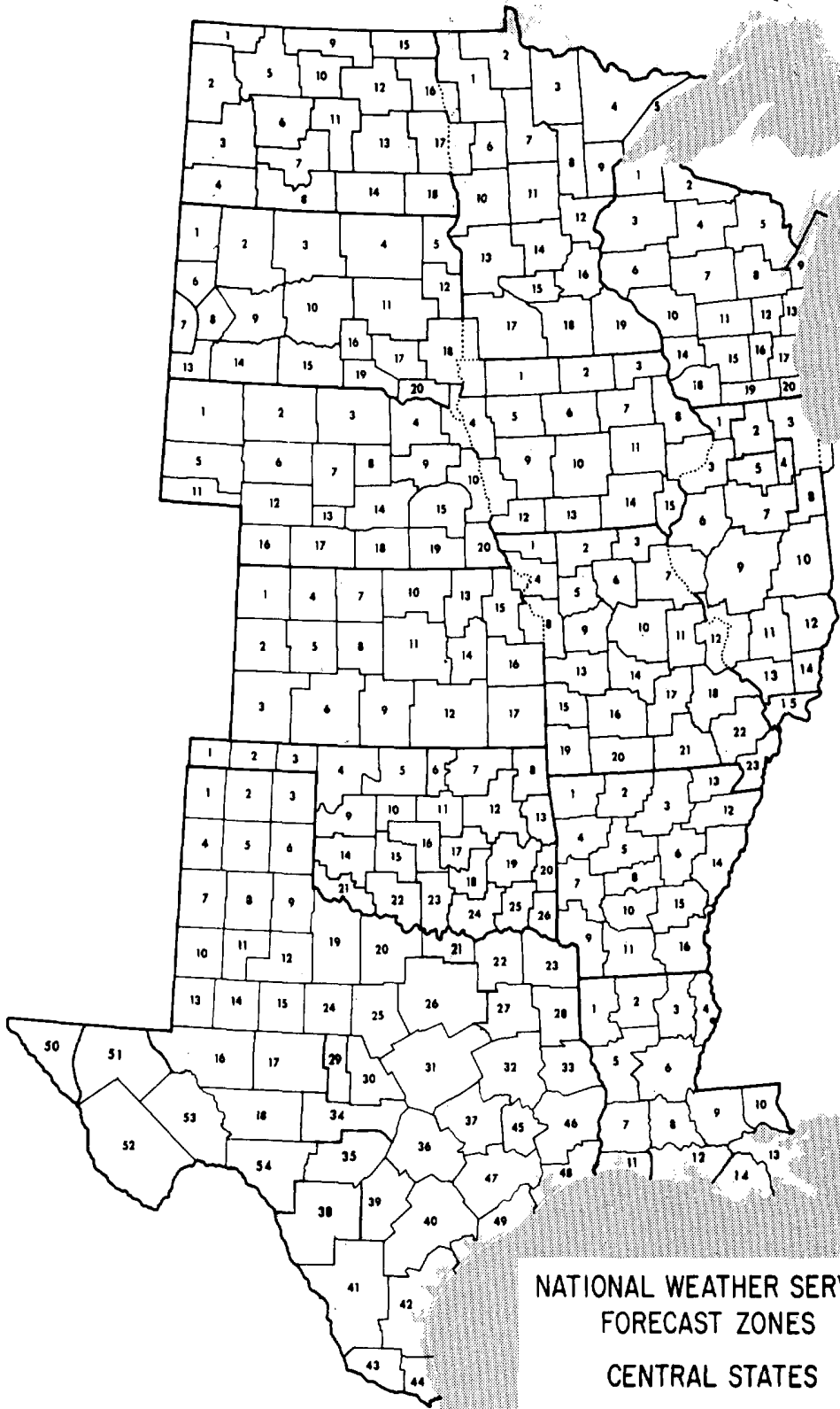
TYPE	NEW JERSEY	NEW MEXICO	NEW YORK	NORTH CAROLINA	NORTH DAKOTA	OHIO	OKLAHOMA	OREGON	PENNSYLVANIA	RHODE ISLAND	SOUTH CAROLINA	SOUTH DAKOTA	TENNESSEE	TEXAS	UTAH	VERMONT	VIRGINIA	WASHINGTON	WEST VIRGINIA	WISCONSIN	WYOMING	ALASKA	HAWAII	PACIFIC	PUERTO RICO	VIRGIN ISLANDS	NATIONALLY	INJURY DEATHS
TORNADOES	0	0			0		1	0	1	0			0	7						4	0	#			0		4	105
Number							1		1					7						4	0	#			0		4	105
Days							1		1					7						4	0	#			0		4	105
Deaths							0		0					0						0	0	#			0		0	105
Injuries							0		0					0						0	0	#			0		0	105
Property Damage							0		0					0						0	0	#			0		0	105
Crop Damage							0		0					0						0	0	#			0		0	105
HAIL																												
Deaths						0	0		0					0						0	0							
Injuries						0	0		0					0						0	0							
Property Damage						0	0		0					0						0	0							
Crop Damage						0	0		0					0						0	0							
THUNDERSTORM WINDS																												
Deaths																												
Injuries																												
Property Damage																												
Crop Damage																												
HIGH WINDS																												
Deaths																												
Injuries																												
Property Damage																												
Crop Damage																												
LIGHTNING																												
Deaths																												
Injuries																												
Property Damage																												
Crop Damage																												
FLASH FLOODS																												
Deaths																												
Injuries																												
Property Damage																												
Crop Damage																												
FLOODS																												
Deaths																												
Injuries																												
Property Damage																												
Crop Damage																												
HEAVY SNOWSTORMS AND BLIZZARDS @																												
Deaths																												
Injuries																												
Property Damage																												
Crop Damage																												
ICE STORMS #																												
Deaths																												
Injuries																												
Property Damage																												
Crop Damage																												
HURRICANES AND TROPICAL STORMS																												
Deaths																												
Injuries																												
Property Damage																												
Crop Damage																												
ALL OTHERS																												
Deaths																												
Injuries																												
Property Damage																												
Crop Damage																												



NATIONAL WEATHER SERVICE  
FORECAST ZONES

WESTERN STATES

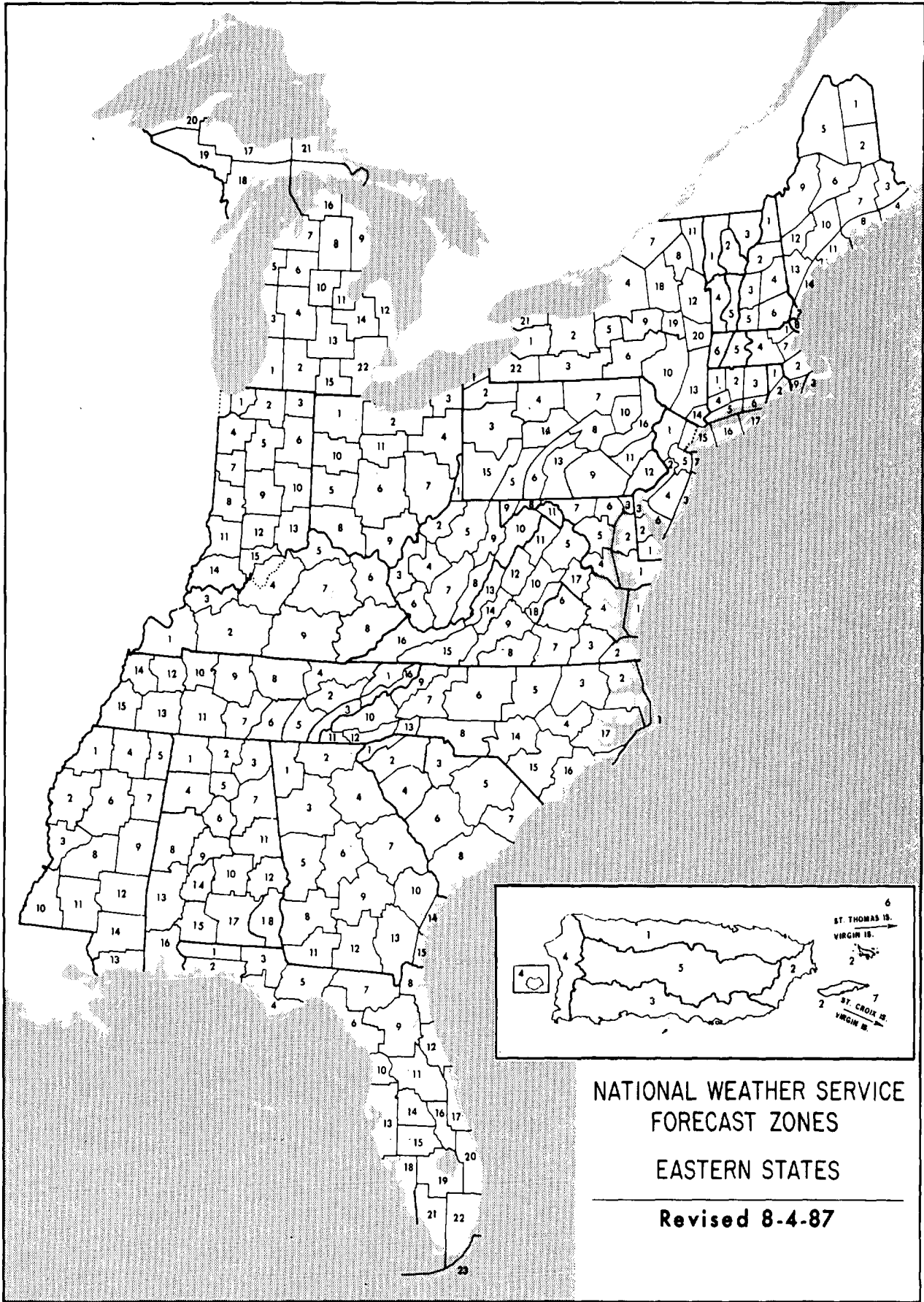
Revised 8-4-87



NATIONAL WEATHER SERVICE  
FORECAST ZONES  
CENTRAL STATES  

---

Revised 8-4-87



NATIONAL WEATHER SERVICE  
FORECAST ZONES

EASTERN STATES

Revised 8-4-87

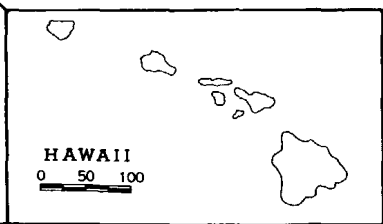
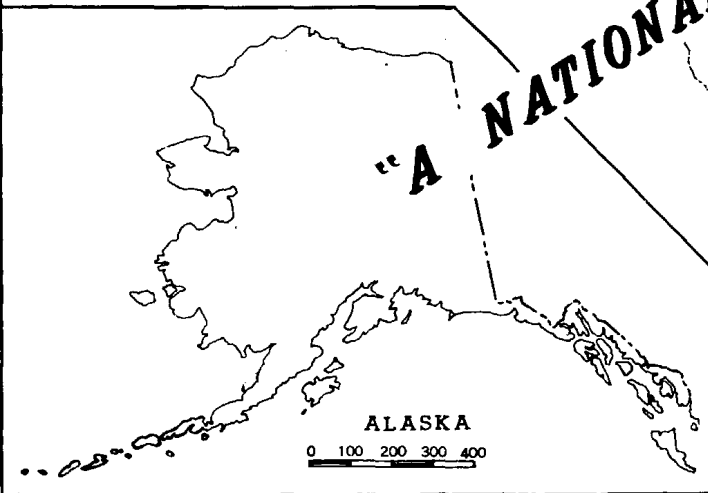
A WORLD OF CLIMATIC INFORMATION  
FOR . . . .

- \* Attorneys
- \* Colleges & Universities
- \* Construction
- \* Consultants
- \* Governmental Agencies
- \* Industry
- \* Insurance Companies
- \* Public Utilities
- \* Research & Development
- \* Energy

**"A NATIONAL RESOURCE FOR CLIMATE INFORMATION"**

★ NATIONAL CLIMATIC  
DATA CENTER

★ SATELLITE DATA  
SERVICES DIVISION



NATIONAL CLIMATIC DATA CENTER  
FEDERAL BUILDING  
37 BATTERY PARK AVENUE  
ASHEVILLE, NC 28801-2733

Phone: (Com)704-271-4800

# CLIMATE PUBLICATIONS AVAILABLE FROM THE NATIONAL CLIMATIC DATA CENTER, ASHEVILLE, N.C.

## A WORLD OF INFORMATION!

For . . . . .

- \* Industry
- \* Research & Development
- \* Public Utilities
- \* Governmental Agencies
- \* Attorneys
- \* Construction
- \* Consultants
- \* Insurance Companies
- \* Colleges & Universities
- \* Solar Energy

### STORM DATA

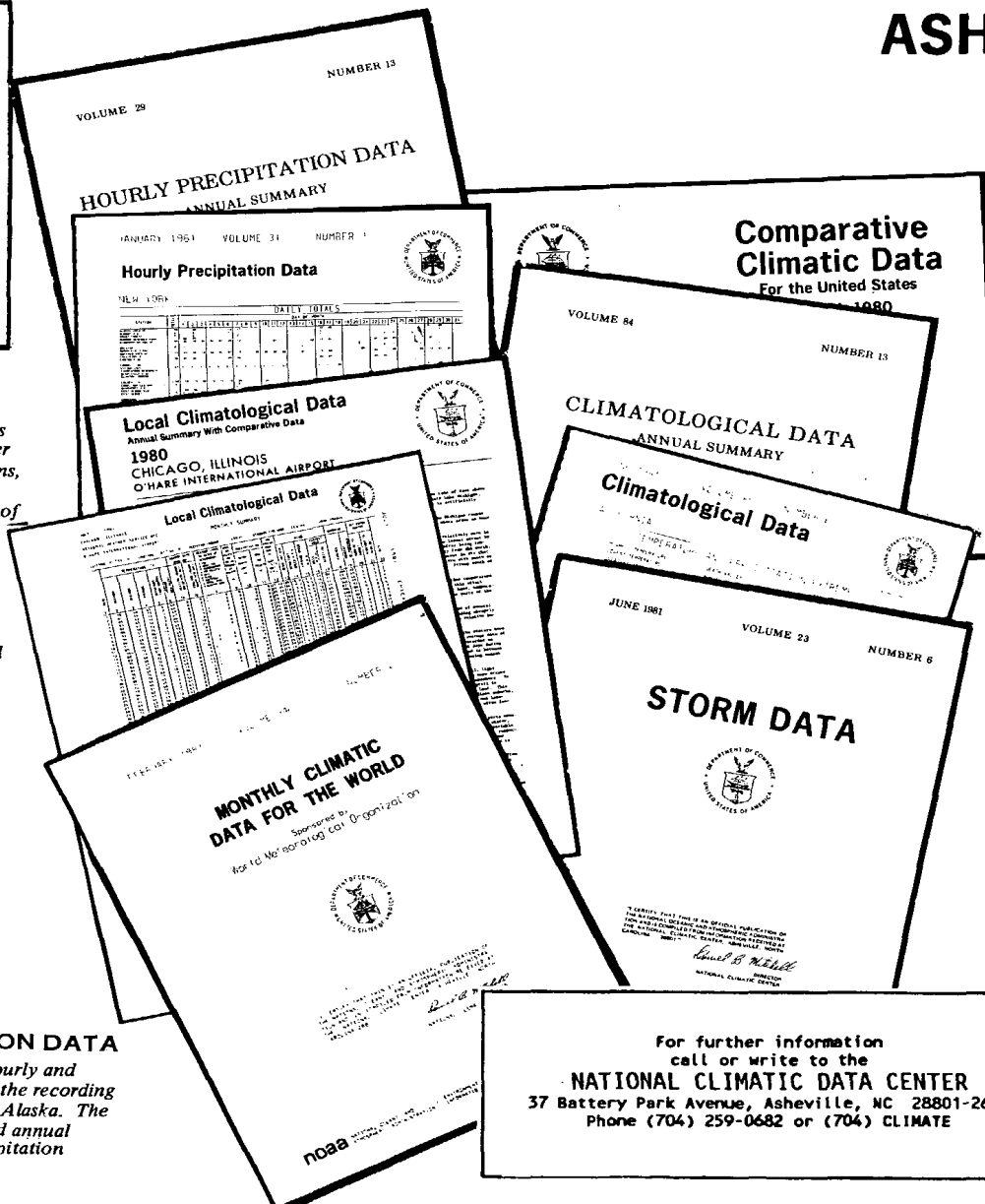
Monthly issue presents a chronological listing, by states, of occurrences of storms and unusual weather phenomena, together with data on the paths of individual storms, deaths, injuries, and estimated property damage, and a brief narrative description of each event. A new section in the bulletin entitled "OUTSTANDING STORMS OF THE MONTH" highlights severe weather and includes descriptive photographs of storms, their tracks, and analyzed maps. The December issue includes annual summaries of tornadoes and lightning and North Atlantic tropical cyclones.

### LOCAL CLIMATOLOGICAL DATA

Published monthly for each first-order station. Presents daily maximum and minimum temperatures, degree day data, precipitation, station pressures, wind statistics, sunshine and sky cover data, as well as 3-hourly data for certain parameters. An annual issue is available summarizing monthly data and including up to 40 years record, and featuring a narrative climatological summary and history of the station.

### HOURLY PRECIPITATION DATA

Monthly issue presents daily, hourly and maximum short duration data for the recording gage stations for each state except Alaska. The annual issue tabulates monthly and annual totals, and annual maximum precipitation data by selected time categories.



### CLIMATOLOGICAL DATA

Published monthly for each state. Gives daily temperature and precipitation records, and monthly averages and totals, with departures from normal when available. Also derived statistics such as heating and cooling degree days, counts of days equaling or exceeding given temperature and precipitation thresholds, extremes, etc., are published for cooperative and first-order stations. Evaporation and soil temperature data are given for reporting stations. Seasonal snowfall, heating and cooling degree day tables included in selected tables. Annual summary also available.

### COMPARATIVE CLIMATIC DATA

Presents tables of monthly and annual averages, totals or extreme climate conditions for approximately 300 major population centers. This publication is particularly helpful for comparing temperature, rainfall, snowfall, wind velocities, sunshine, cloudiness and relative humidities for the principal cities. The cities are listed alphabetically by state in two sections: observed data and climatological normals. This is an annual publication.

### MONTHLY CLIMATIC DATA FOR THE WORLD

Contains monthly means of temperature, pressure, precipitation, vapor pressure and sunshine for about 2,500 surface data stations worldwide. Also contains monthly mean upper air temperatures, dew point depressions and wind velocities for ten standard levels.

For further information  
call or write to the  
**NATIONAL CLIMATIC DATA CENTER**  
37 Battery Park Avenue, Asheville, NC 28801-2696  
Phone (704) 259-0682 or (704) CLIMATE



# CLIMATOLOGICAL DATA ANNUAL SUMMARY PENNSYLVANIA 1987

ISSN 0364-5843

VOLUME 92 NUMBER 13



IF THIS IS AN OCEANIC AND ATMOSPHERIC DATA CENTER.

DIRECTOR

CLIMATOLOGICAL DATA is a unique source of weather information derived from data collected by over 8,000 cooperative weather observers located throughout the United States, Puerto Rico, the Virgin Islands, and U. S. Pacific Islands. It is published monthly, with an Annual Summary, for each State or combination of States/Areas by the National Climatic Data Center, Asheville, North Carolina.

\* **MONTHLY** editions contain:

- Temperature and precipitation extremes and summarized data.
- Daily precipitation, maximum and minimum temperatures, snowfall, soil temperatures, and evaporation & wind.
- Graphical displays of various climatological features.
- Station indices and locator maps.
- Monthly totals of heating degree days and snowfall are published as seasonal tables in the July issue.

\* **ANNUAL SUMMARY** contains monthly and annual:

- Total precipitation and departures from normal.
- Average temperatures and departures from normal.
- Temperature extremes and freeze data.
- Soil temperatures.
- Total evaporation and wind movement.
- Monthly and seasonal cooling degree days.
- Graphical displays of various climatological features.
- Station indices and locator maps.

SHELF STOCK of the printed publication is maintained only for the most recent three years. Earlier years are available on microfiche or as paper copies reproduced from microfiche. The data are also available in digital form - on magnetic tape or diskette.

## A WORLD OF INFORMATION

For . . . . .

- \* Industry
- \* Research and Development
- \* Public Utilities
- \* Government Agencies
- \* Attorneys
- \* Construction
- \* Consultants
- \* Insurance Companies
- \* Colleges and Universities
- \* Energy

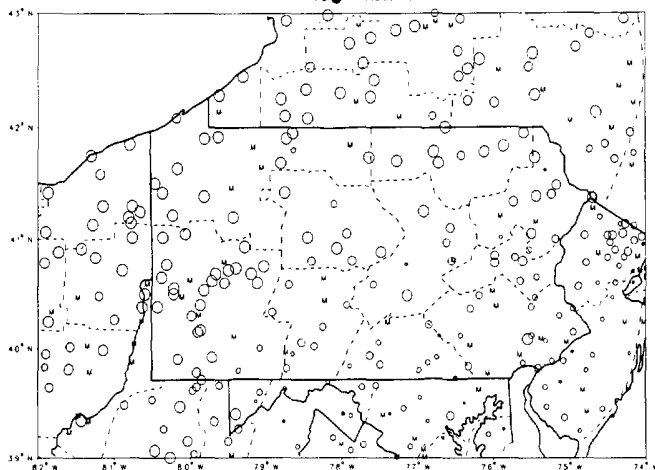


ISSN 0364-5843

# CLIMATOLOGICAL DATA PENNSYLVANIA JANUARY 1988 VOLUME 93 NUMBER 1

MONTHLY PRECIPITATION DEPARTURE FROM  
INDIVIDUAL STATION NORMALS (1951-1980)

M INCOMPLETE DATA FOR THE MONTH  
○ EXACTLY NORMAL  
○○○ 5, 10, 20, 50% OR MORE BELOW NORMAL  
●●● 10, 20, 40, 100% OR MORE ABOVE NORMAL



CIRCLE DIAMETER IS PROPORTIONAL TO DEPARTURE ON A CONTINUOUS SCALE

I CERTIFY THAT THIS IS AN OFFICIAL PUBLICATION OF THE NATIONAL OCEANIC AND ATMOSPHERIC ADMINISTRATION AND IS COMPILED FROM INFORMATION RECEIVED AT THE NATIONAL CLIMATIC DATA CENTER.

*Kenneth D. Walden*

DIRECTOR, NATIONAL CLIMATIC DATA CENTER

**noaa**

NATIONAL OCEANIC AND ATMOSPHERIC ADMINISTRATION

NATIONAL ENVIRONMENTAL SATELLITE, DATA AND INFORMATION SERVICE

NATIONAL CLIMATIC DATA CENTER ASHEVILLE NORTH CAROLINA

For further information,  
call or write to the

### NATIONAL CLIMATIC DATA CENTER

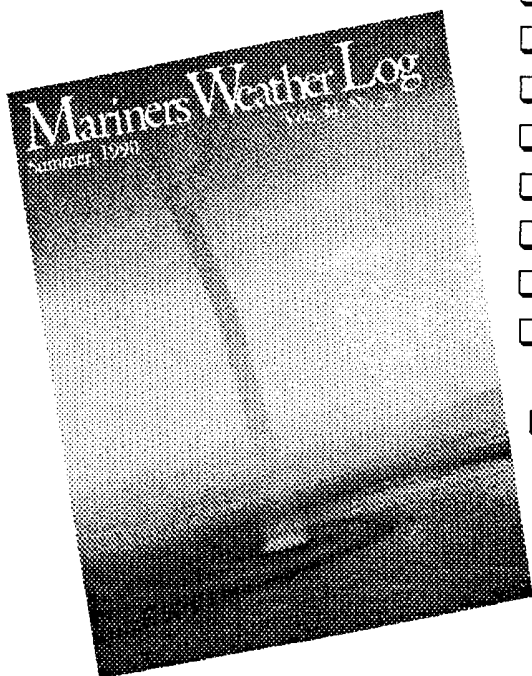
37 Battery Park Avenue, Asheville, NC 28801-2696  
Phone (704) 259-0682 or (704) CLIMATE



To change your address, please return a copy of the mailing label along with your new address to: National Climatic Data Center (Subscription Service).

# Mariners Weather Log

*Serving the maritime community*



- Comprehensive coverage of storms.
- Typhoon and Hurricane information.
- Unusual weather phenomena at sea.
- Selected gale and wave observations.
- Storm tracks and weather-related casualties.
- History of marine weather and marine lore.
- Lighthouse features by Elinor DeWire
- Sea photography and radio tips.

For sample copy and subscription form write:

**User Services Branch  
National Oceanographic Data Center  
NOAA  
Washington, DC 20235**

***Inquiries/Comments Call: (704) 271-4800***

National Climatic Data Center  
Federal Building  
37 Battery Park Avenue  
Asheville, NC 28801-2733

**OFFICIAL BUSINESS  
PENALTY FOR PRIVATE USE \$300  
ADDRESS CORRECTION REQUESTED**

**BULK RATE  
POSTAGE & FEES PAID  
United States Department of Commerce  
NOAA Permit No. G-19**