

STORM DATA



"I CERTIFY THAT THIS IS AN OFFICIAL PUBLICATION OF
THE NATIONAL OCEANIC AND ATMOSPHERIC ADMINISTRATION
AND IS COMPILED FROM INFORMATION RECEIVED AT THE
NATIONAL CLIMATIC DATA CENTER, ASHEVILLE NORTH CAROLINA"
28801

Kenneth D. Nielsen

DIRECTOR
NATIONAL CLIMATIC DATA CENTER

Support for this publication is provided in part by the Office of Naval Research,
Marine Meteorology Program, Dr. Robert F. Abbey, Jr., Director.
Extensive data collection efforts are provided by the National Weather Service.

noaa

NATIONAL OCEANIC AND
ATMOSPHERIC ADMINISTRATION

/ NATIONAL ENVIRONMENTAL SATELLITE,
DATA, AND INFORMATION SERVICE

/ NATIONAL CLIMATIC DATA CENTER
ASHEVILLE, N.C.

C O N T E N T S

Cover: Floodwaters of the Schoharie Creek near Amsterdam, New York churn through the remains of a bridge that, until its collapse on April 5th, carried traffic of the New York State Thruway (Interstate 90) at an average rate of 15,519 vehicles a day. Ten people died in the incident as a result of plunging nearly eighty feet downward into the raging creek with their vehicles (see FLOODING in the NORTHEAST, pages 14 through 16). ---Photo by and courtesy of The Recorder, Amsterdam, NY.

	<u>Page</u>
Outstanding Storms of the Month.....	2
Storm Data and Unusual Weather Phenomena.....	17
Corrections.....	34
Map.....	35
Storm Summary.....	36
Reference Notes.....	38
"F" Scale Definitions.....	38

STORM DATA (ISSN 0039-1972)

The section on Outstanding Storms of the Month is prepared by Professor T. Theodore Fujita, editor, and Duane J. Stiegler, associate editor, the University of Chicago with funding by the U. S. Office of Naval Research. The Storm Data and Unusual Weather Phenomena narratives, and summaries of Hurricanes/Tropical Storms are prepared by the National Weather Service. The National Climatic Data Center compiles statistics on deaths, injuries, damage, and prepares the annual summaries of Tornadoes and Lightning. This publication contains our best information on storms, but, due to the difficulties inherent in collection of this type of data, it is not all-inclusive. Late reports and corrections will be carried quarterly. Maps of zones used in the Storm Data and Unusual Weather Phenomena will be published in these editions; Eastern States: JAN, APR, JUL, OCT.
Central States: FEB, MAY, AUG, NOV.
Western States: MAR, JUN, SEP, DEC.

Storm Data is published monthly by the National Climatic Data Center.

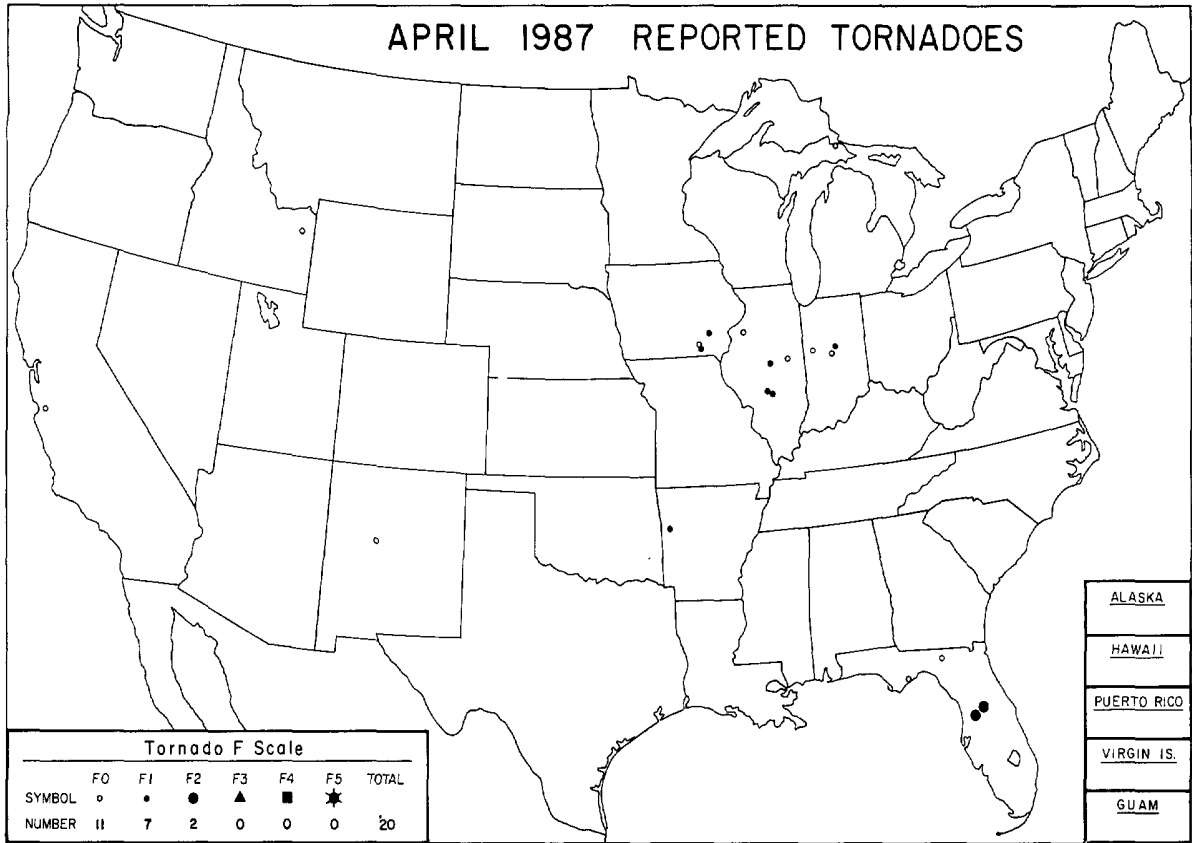
Publication Staff

J. D. Ziemanski	S. C. Lackey
Supervisory Meteorological Technician	Editorial Clerk

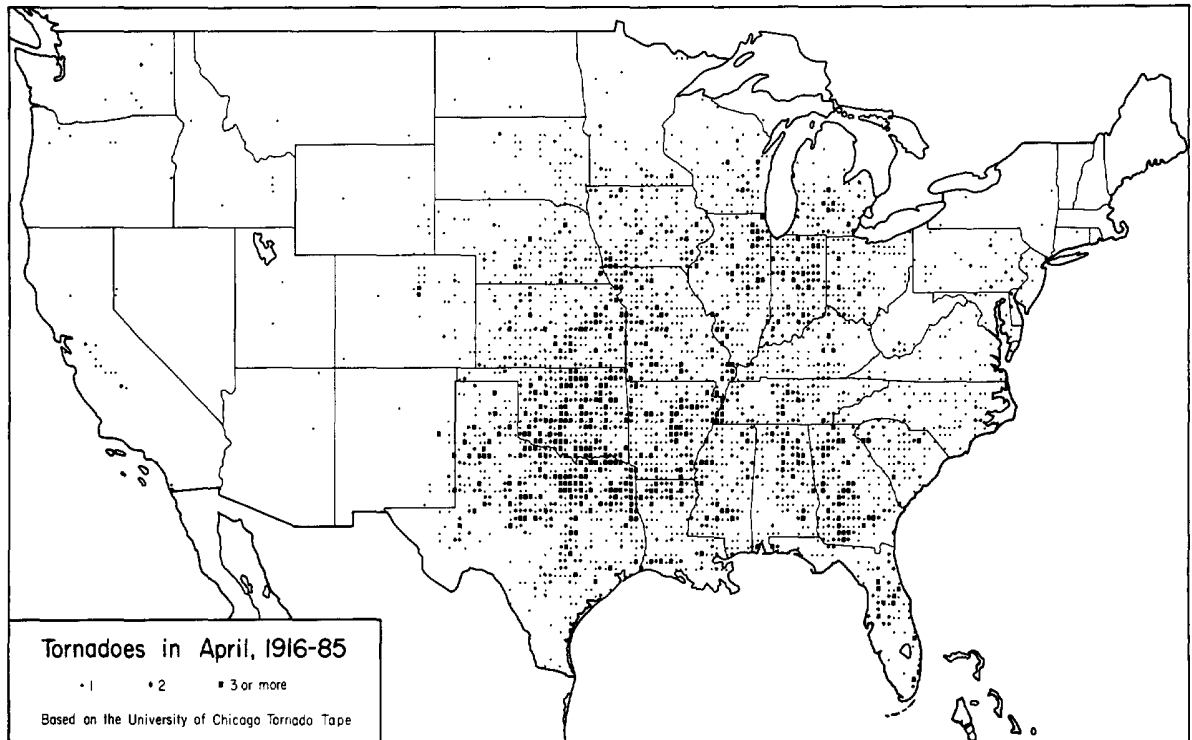
Subscription, pricing, and ordering information is available from:

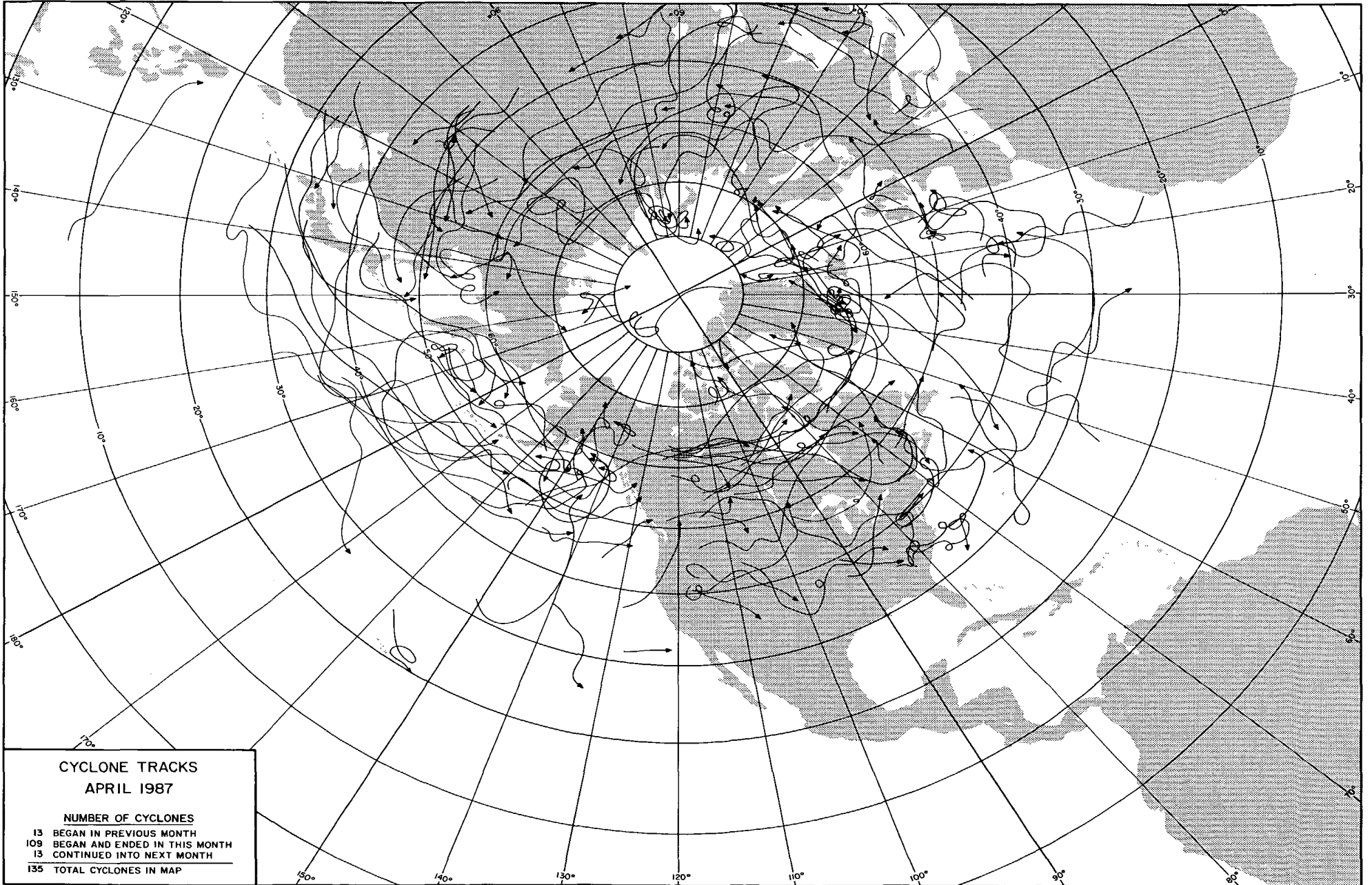
National Climatic Data Center
Federal Building
Asheville, NC 28801-2696

OUTSTANDING STORMS OF THE MONTH



● COMPLETE REPORT RECEIVED	● 1AL	● 7DE	● 14KS	● 21MN	● 28NJ	● 33OH	● 39SD	● 44VA	● 49AK(SE)
○ PRELIMINARY REPORT RECEIVED	● 2AZ	● 8FL	● 15KY	● 22MS	● 29NM	● 34OK	● 40TN	● 45WA	● 50HI
○ REPORT NOT RECEIVED	● 3AR	● 9GA	● 16LA	● 23MO	● 30NY(O)	● 35OR	● 41TX(N)	● 46WV	● 51PR
(N) northern (W) western	● 4CA(N)	○ 10ID	○ 17ME	● 24MT	● 30NY(C)	● 36PA(E)	● 41TX(S)	● 47WI	● 52VI
(S) southern (C) central	● 4CA(S)	● 11IL	● 18MD	● 25NE	● 30NY(W)	● 36PA(W)	● 41TX(W)	● 48WY	● 53PC
(E) eastern (O) coastal	● 5CO	● 12IN	● 19MA	● 26NV	● 31NC	● 37RI	● 42UT	○ 49AK(N)	
(SE) southeastern	● 6CT	● 13IA	● 20MI	○ 27NH	● 32ND	● 38SC	● 43VT	● 49AK(S)	





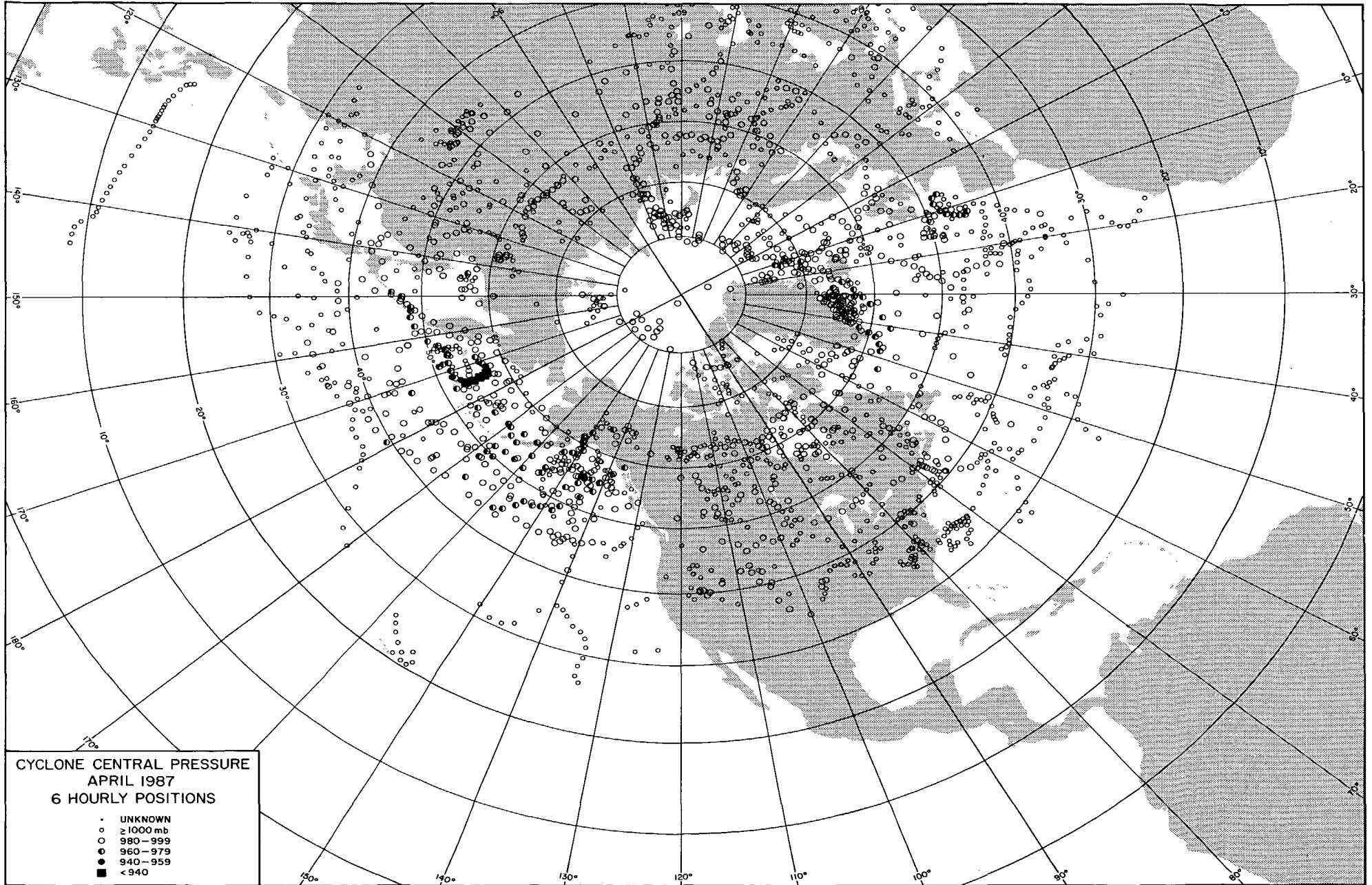
**CYCLONE TRACKS
APRIL 1987**

NUMBER OF CYCLONES

- 13 BEGAN IN PREVIOUS MONTH
- 109 BEGAN AND ENDED IN THIS MONTH
- 13 CONTINUED INTO NEXT MONTH

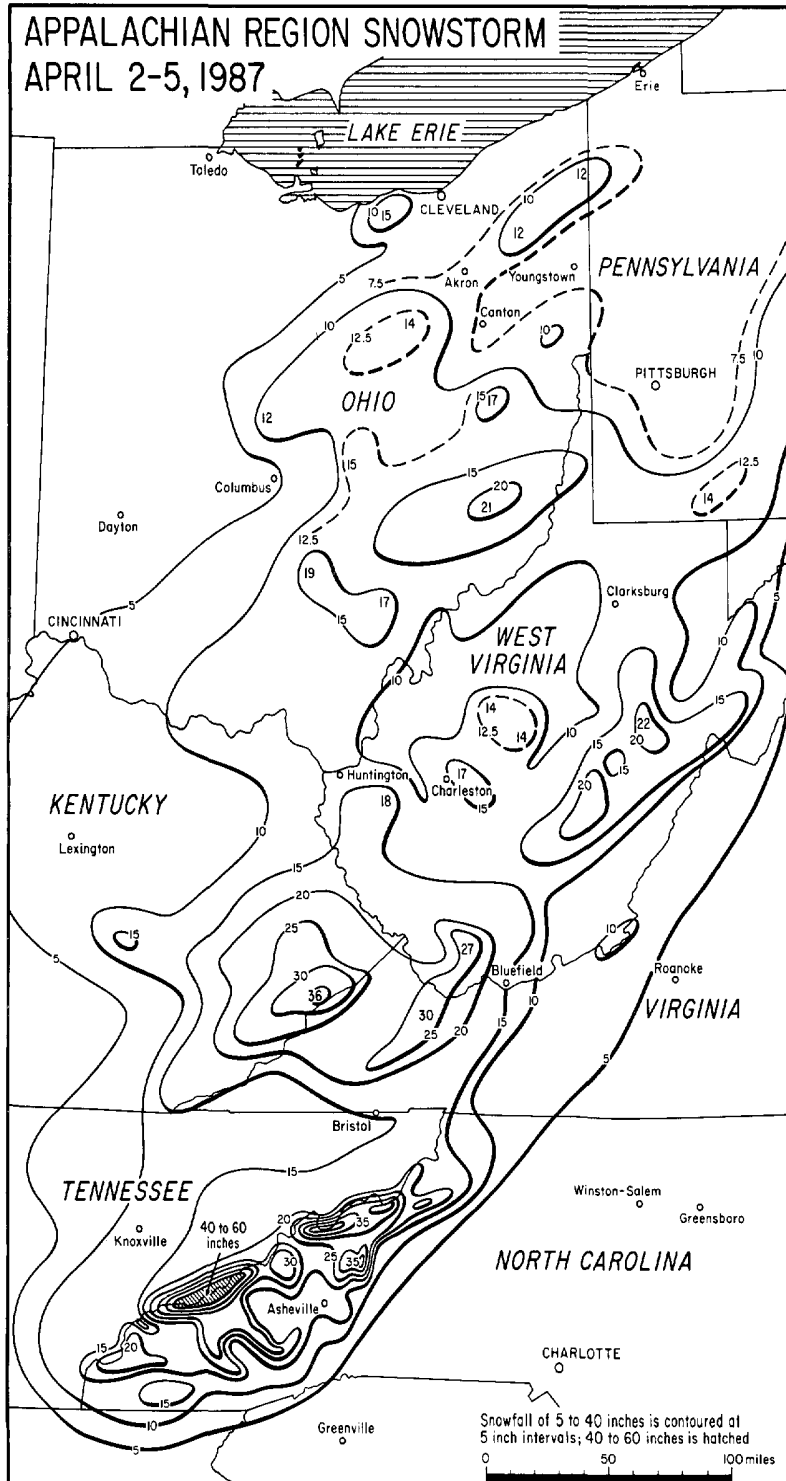
- 135 TOTAL CYCLONES IN MAP

Mapped at the University of Chicago from NMC, 6-hourly surface maps



1. SNOWSTORM in the APPALACHIAN REGION on April 2-5, 1987

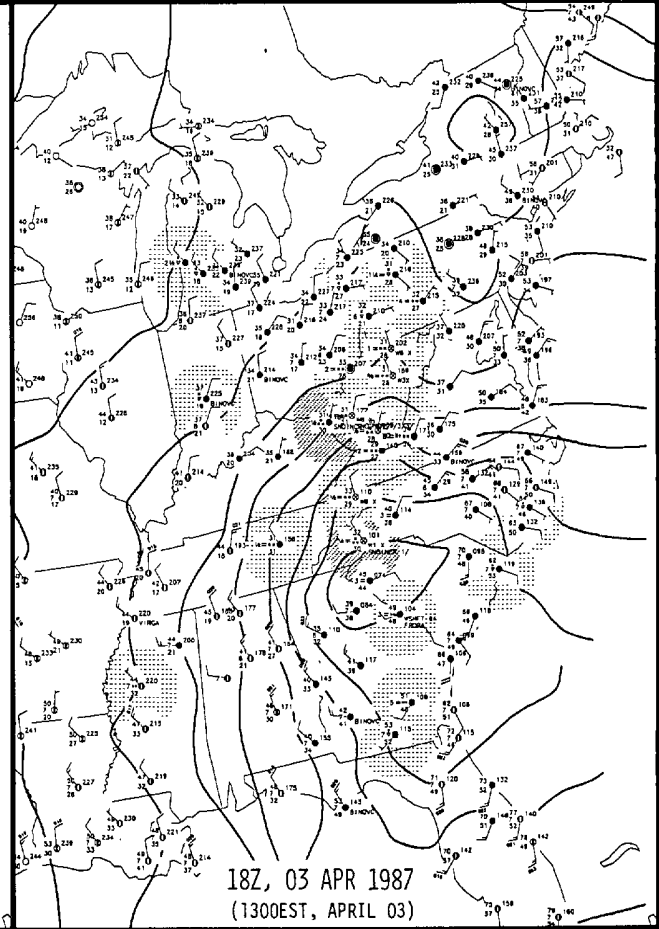
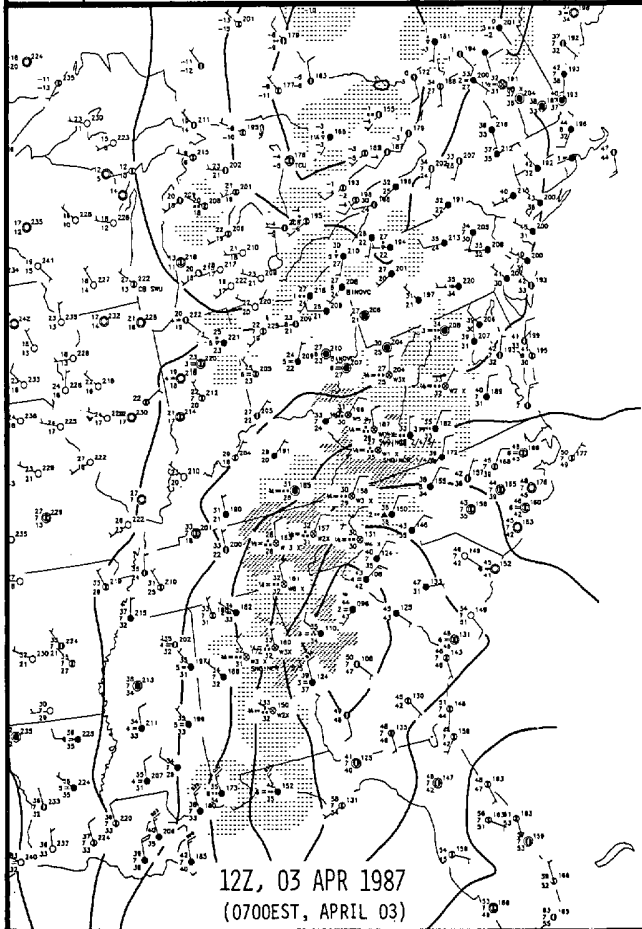
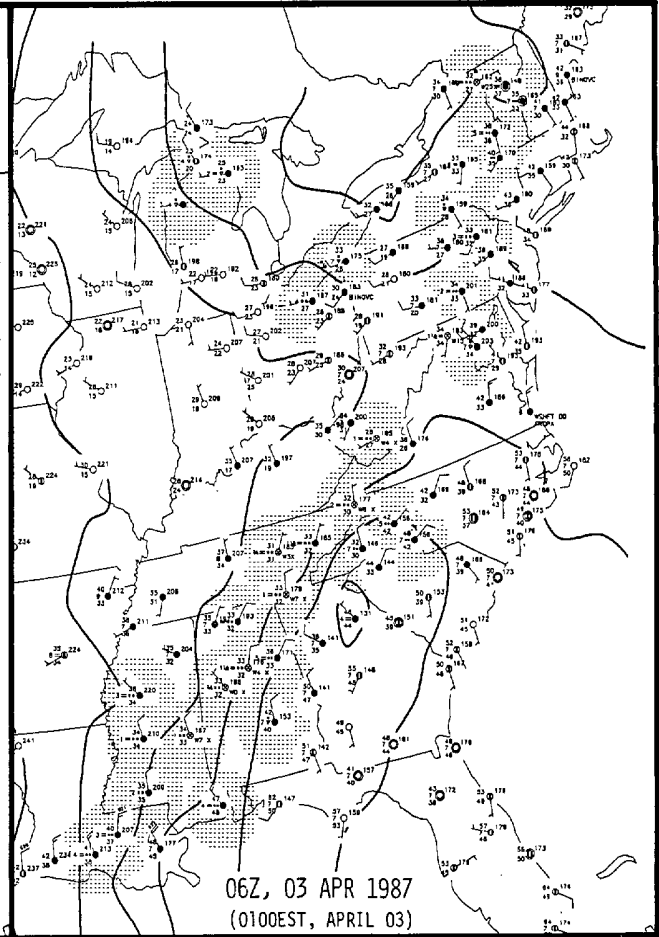
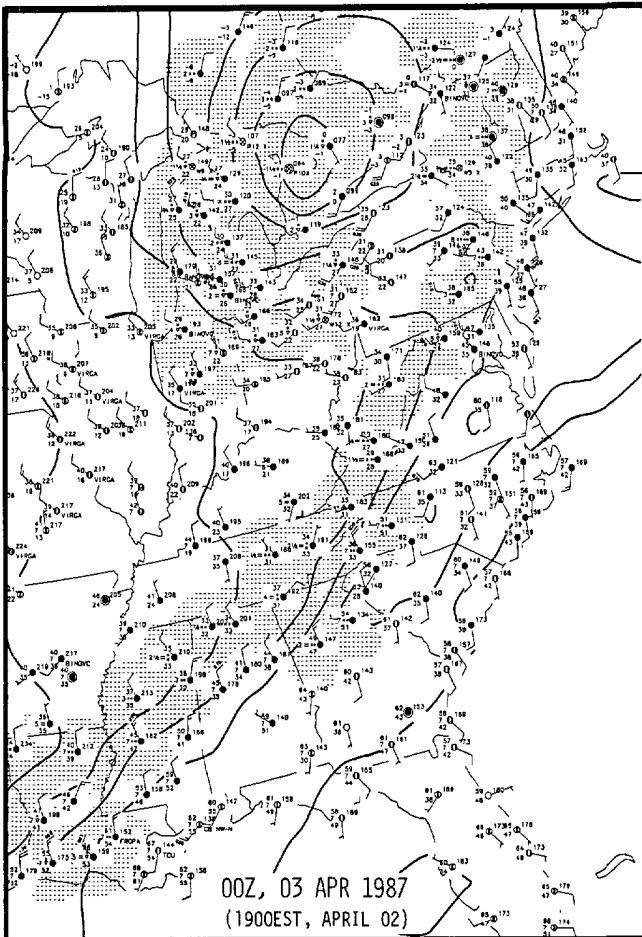
Snow had already begun over portions of the Appalachians along a stationary front late on April 2nd, when a low pressure system formed in Georgia on the 3rd and rapidly deepened as it moved to Pennsylvania on the 4th. The storm dumped an unusually late and record-breaking heavy snow over the entire region during those two days, and the snow lingered in some areas through the 5th. Snow had fallen from as far south as Mobile, Alabama to western New York, and amounted to as much as 60 inches in Great Smokey Mountains National Park. Mobile had its first April snow (flurries) ever, or at least since 1872 when records there began. At the Tennessee-North Carolina border, Interstate 40 was closed by snow for the first time since it opened 20 years ago. Although widespread and resulting in millions of dollars in damage, effects were mainly short-term due to the storm's late-season nature. A subsequent rapid snowmelt resulted in flooding in some areas.



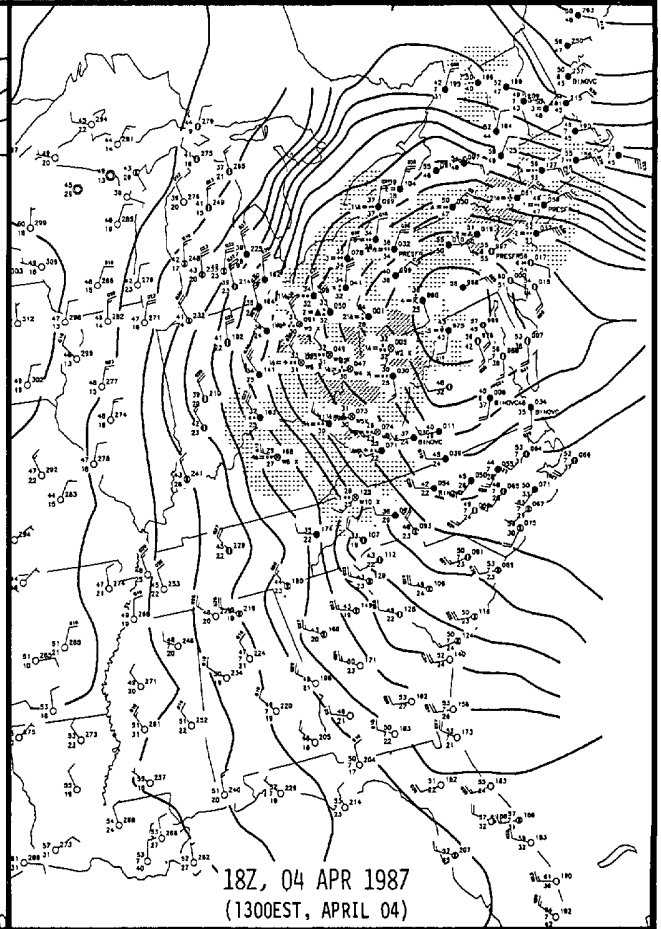
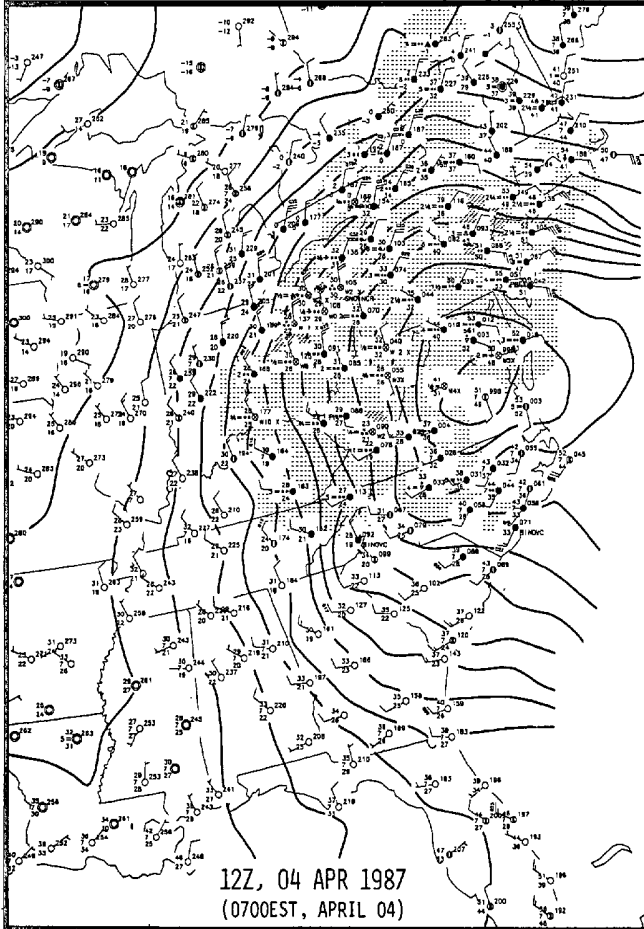
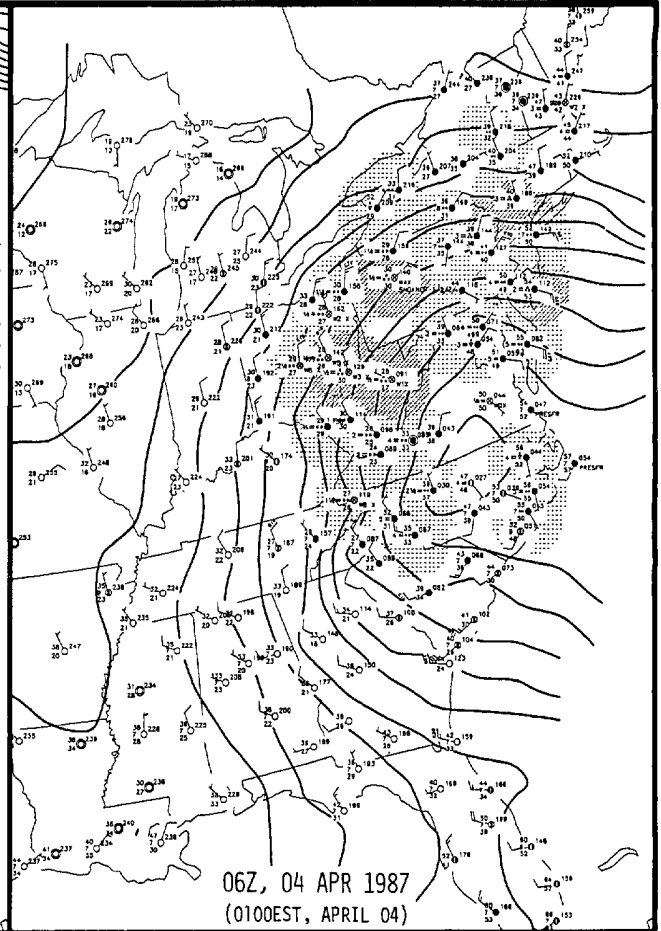
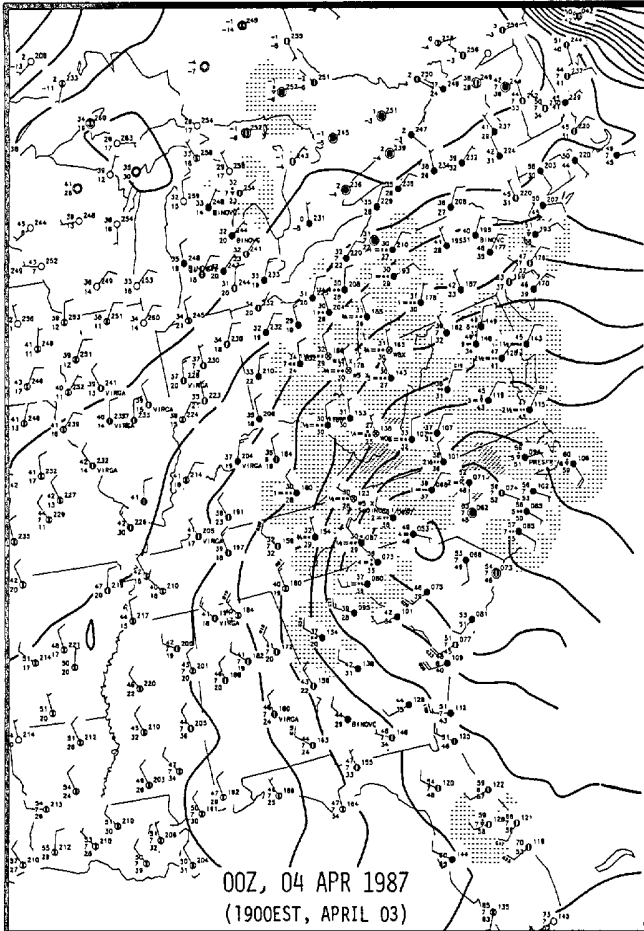
LEFT: Analysis of the storm-total snowfall over the Appalachian region of the East-Central U.S. on April 2nd through the 5th. The 60-inch amounts were reported from Newfound Gap by N.P.S. rangers who made numerous measurements in several places (not in drifts) and found that the snow depth averaged 4 to 6 feet. This was the largest single-storm snowfall in North Carolina history. ---Mapped by the University of Chicago from data and analyses supplied by the following persons and organizations: Rick Shanklin, NWSO at Jackson, KY; Beverly Poole, NWSFO at Louisville, KY; Marvin E. Miller, NWSFO at Cleveland, OH; Theresa Rossi Drake, NWSFO at Pittsburgh, PA; Ken Batty, NWSFO at Charleston, WV; and Grant W. Goodge, NCDC, Asheville, NC.

NEXT THREE PAGES: Computerized data plot and analysis maps show the surface conditions across the Eastern U.S. as the record-breaking snowstorm developed in Georgia on April 3rd, moved northward to Pennsylvania on the 4th, and weakened on the 5th before moving out to sea. Light and dark gray shading depict areas of light and moderate precipitation, respectively. ---Maps by Brian E. Doty, University of Maryland.

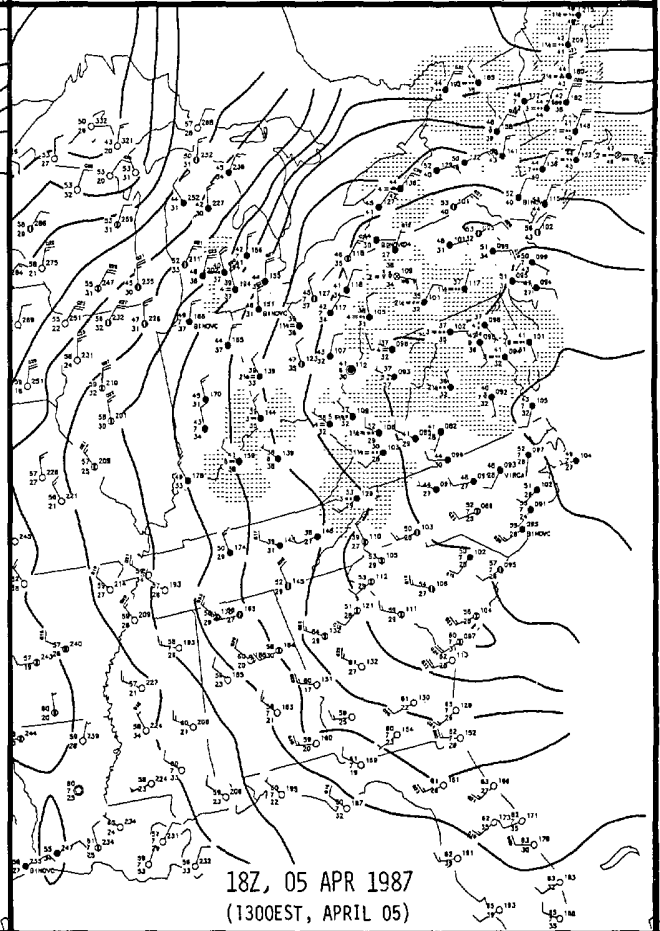
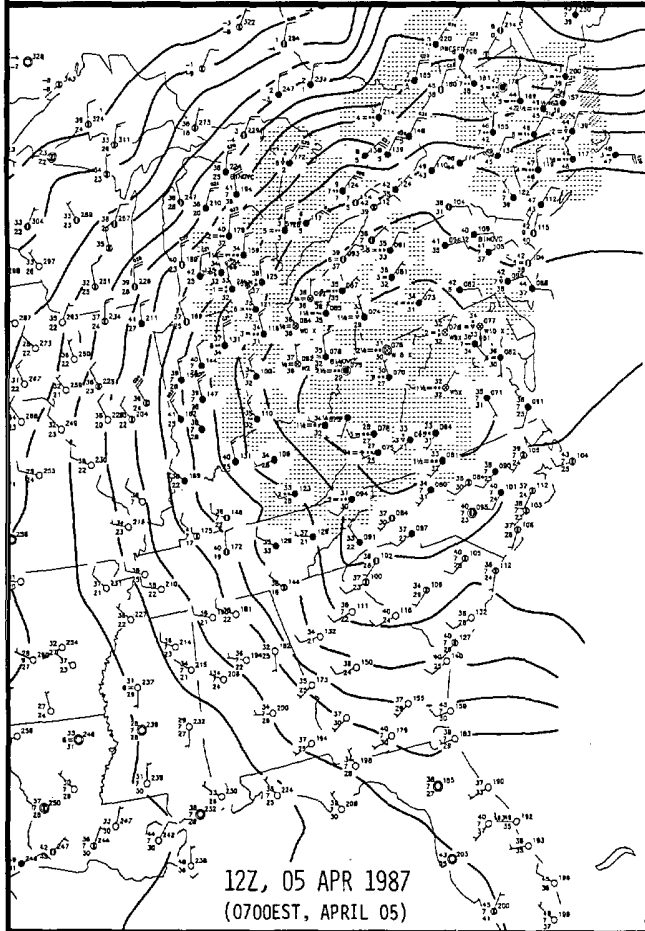
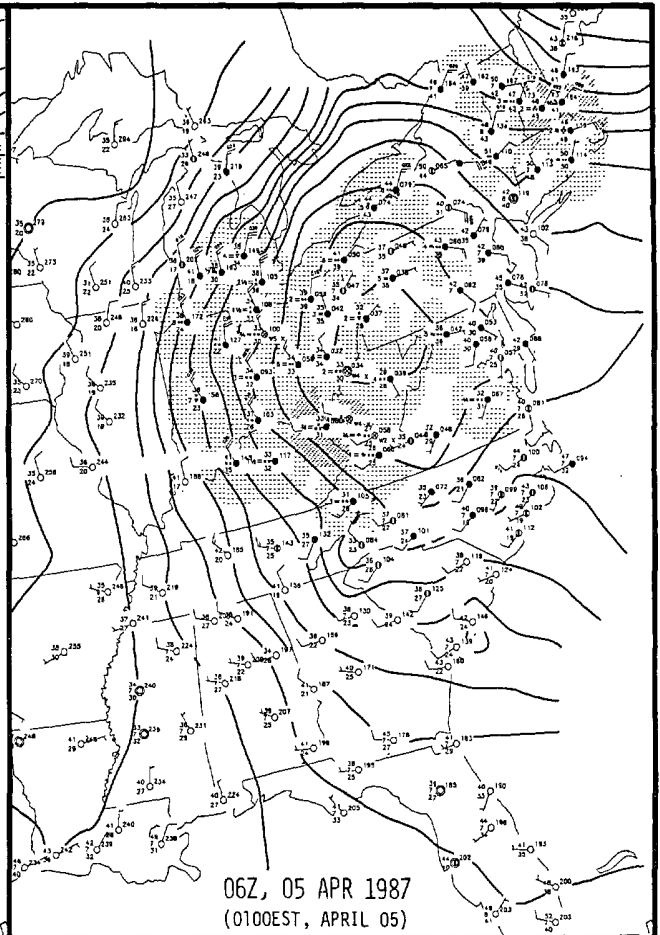
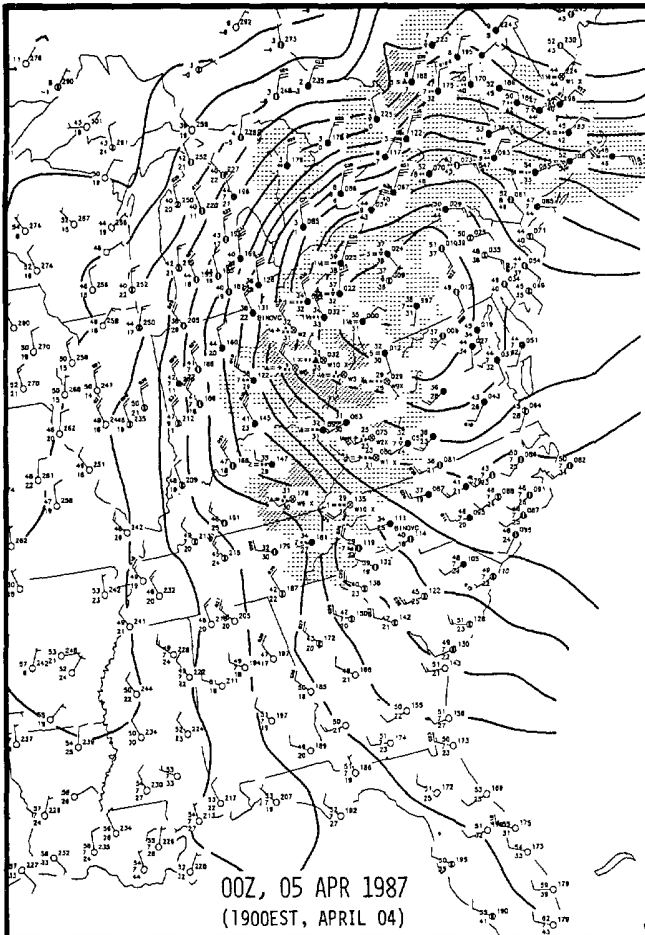
SNOWSTORM in the APPALACHIAN REGION ---- continued



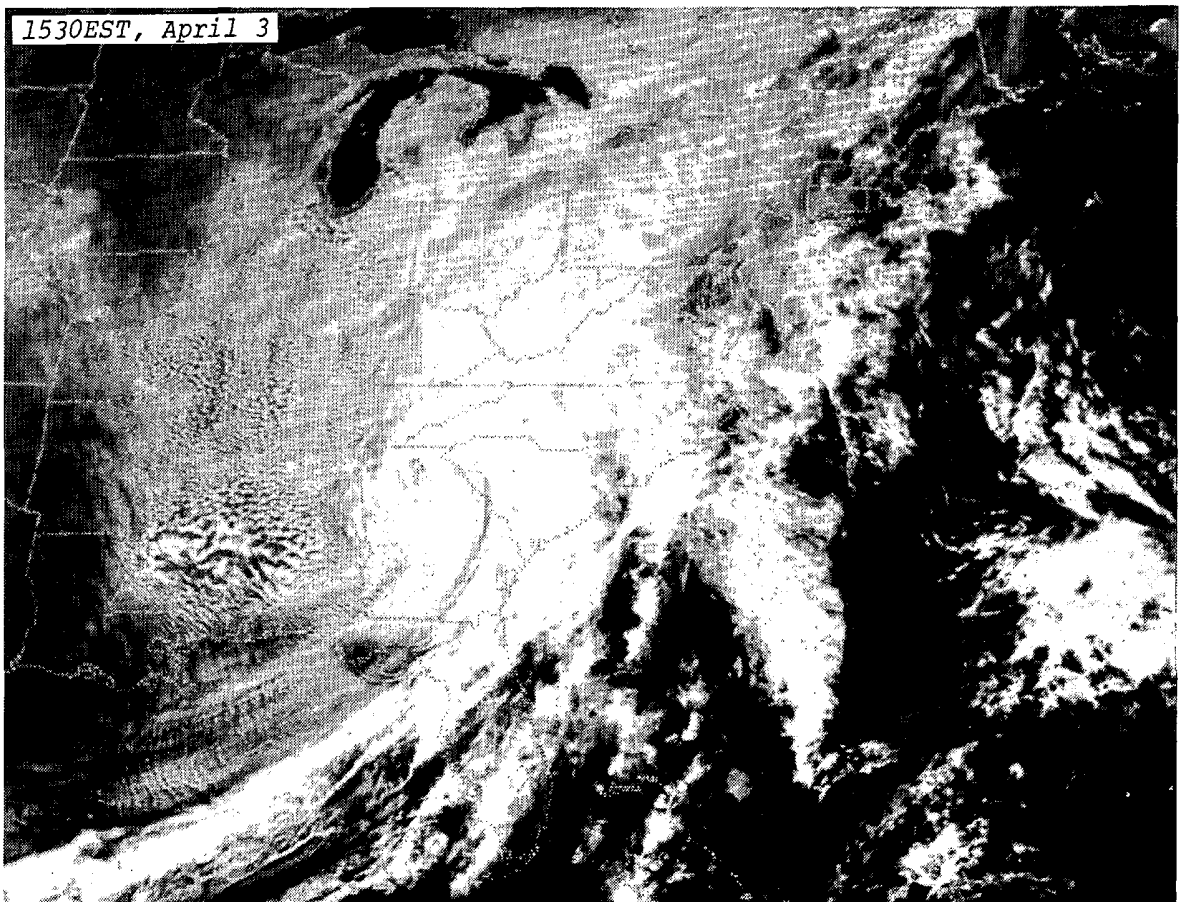
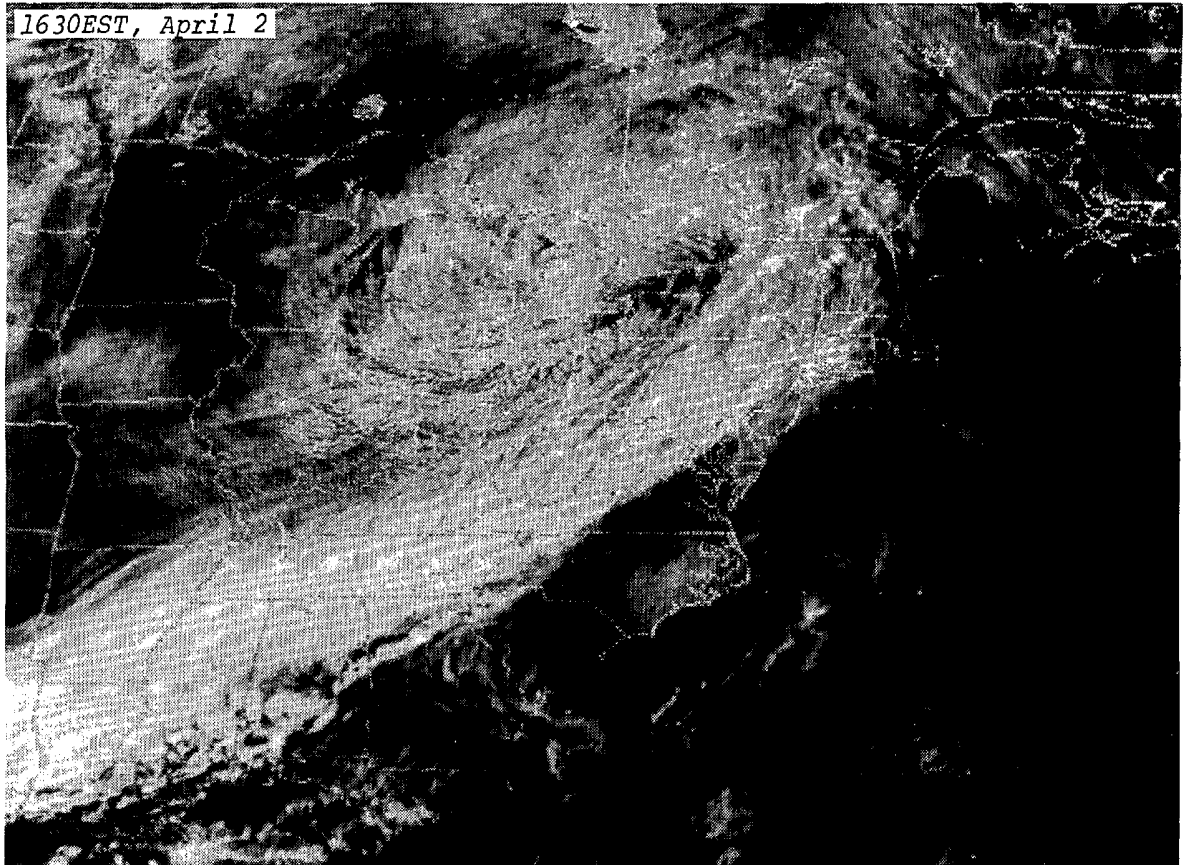
SNOWSTORM in the APPALACHIAN REGION ---- continued



SNOWSTORM in the APPALACHIAN REGION ---- continued

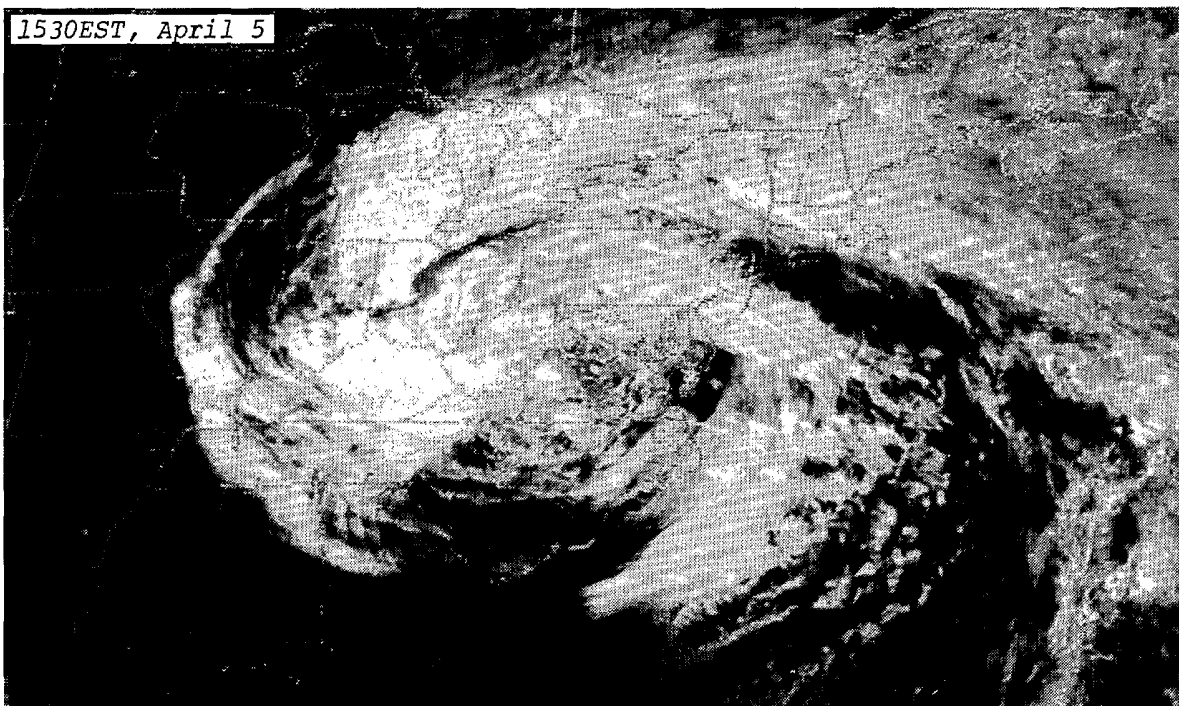
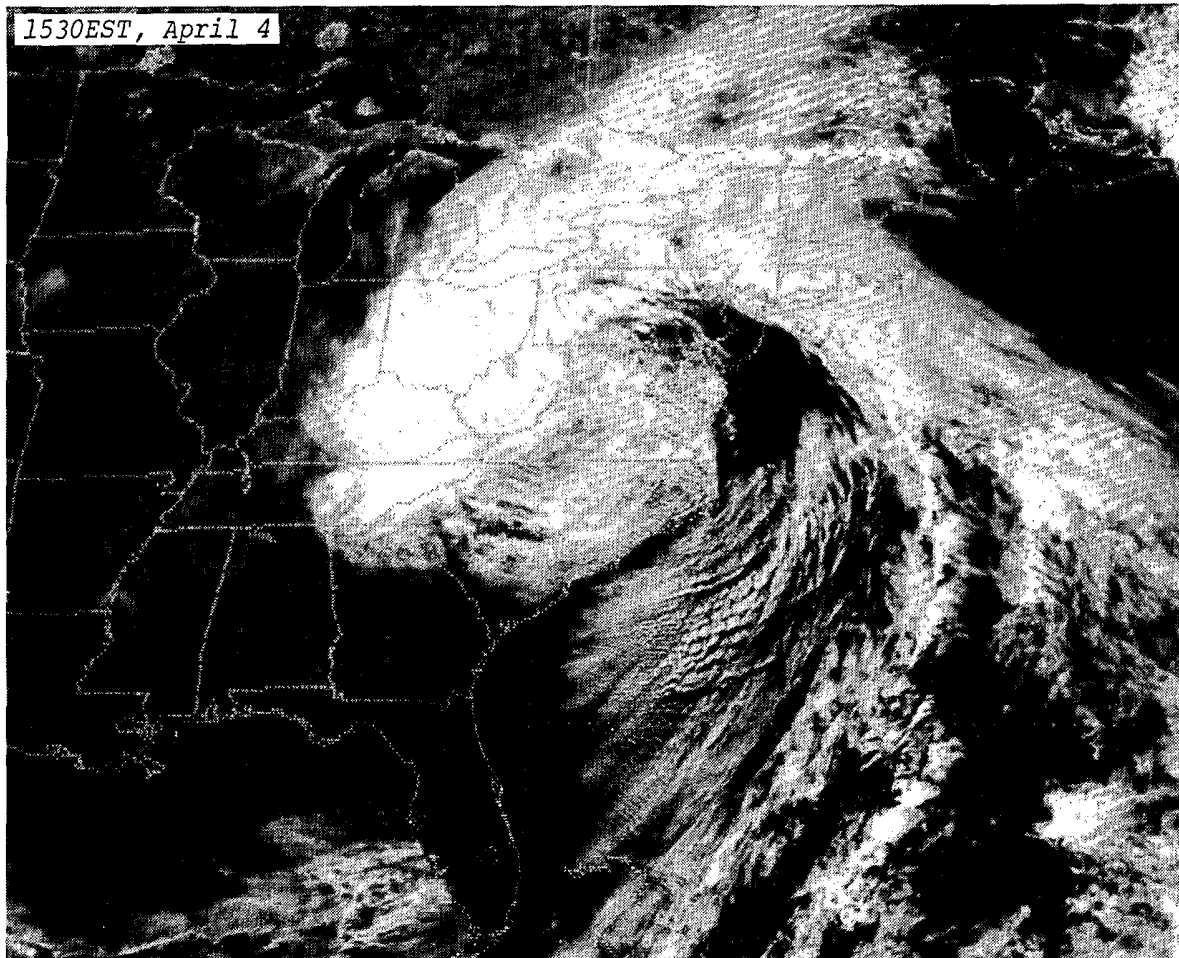


SNOWSTORM in the APPALACHIAN REGION ---- continued



PAGES 10 and 11: Four GOES 6 satellite, visible images depict the daily cloud pattern over the Eastern U.S. as the heavy snow fell over the Appalachians on April 2nd through 5th, 1987. On April 2nd, a cold front associated

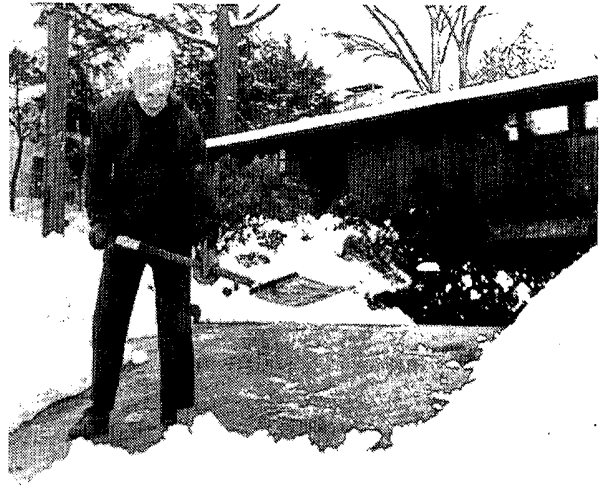
SNOWSTORM in the APPALACHIAN REGION ---- continued



with a low pressure center over Lake Huron stalled along the Appalachian Ridge, and a new low formed along it in Georgia on the 3rd. This created a situation by which ample moisture was drawn inland from the Atlantic by the storm, and circulated around to its west where upslope winds from the northeast through northwest, and prolonged by the storm's lack of translation, led to the heavy snowfall event. ---Photos from NESDIS.



In the Asheville, North Carolina area, a tractor clears a parking lot of wet, slushy snow (above) and still falling snow embraces outdoor furniture, set out in anticipation of summer, in a wintery grip (right). ---Both photos by Steve Dixon, The Asheville Citizen-Times.



An Asheville resident makes one last use of his snow shovel for the Winter of '87, even though it's officially Spring, as he clears his driveway of snow that fell in amounts of 15 to 20 inches in the area. ---Photo by Steve Dixon, The Asheville Citizen-Times.



SNOWSTORM in the APPALACHIAN REGION ---- continued

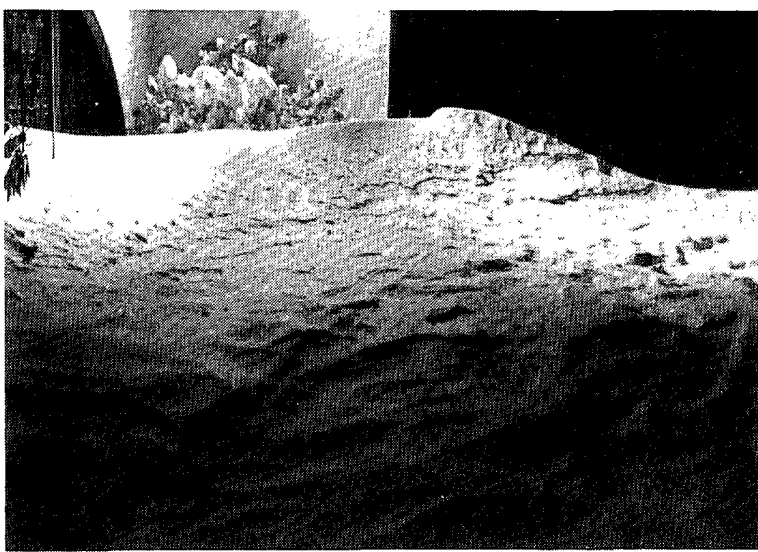


Typical of incidents that resulted from the storm, a tree and car have an accidental encounter near Asheville. ---Photo by Steve Dixon, The Asheville Citizen-Times.



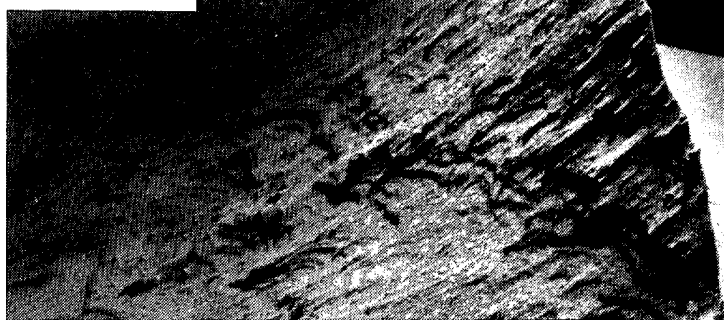
A resident of Wolf Laurel, North Carolina, about 25 miles north of Asheville, digs his way through 25 to 30 inches of snowfall to his buried vehicle (background) as snow still falls on April 5th. ---Photo by Emmet Williams of Wolf Laurel, NC.

SNOWSTORM in the APPALACHIAN REGION ---- continued



Through the use of self portrait, top left, the photographer emphasizes the depth of a 5-foot drift downwind (east) of his house on Flat Top Mountain on the morning of April 6th. The location, 9 miles east-southeast of Asheville, is at an elevation of 4320 feet. Top right, a drift on the west side of the home is shown at midday.

Taken on the night of April 5th at the same house on Flat Top Mountain, photos above and at right present an eerie yet revealing example of the wind's artistic work on a drift at the front of the house. ---All four photos by Grant W. Goodge, National Climatic Data Center, Asheville, NC.



2. FLOODING in the NORTHEAST on April 1-10, 1987

Snowmelt, and large rainfall amounts on March 31st and April 4th through 7th, led to flooding across much of New England, New Jersey, and eastern New York and Pennsylvania during the first ten days of April. A large contributor to the flooding was the same weather system that produced the heavy snow in the Appalachians (see Item 1). Many creeks and rivers reached and surpassed their flood stages, requiring evacuations and causing damage that was widespread and in the hundreds of millions of dollars, perhaps in the billions. The single event that best demonstrated the mayhem brought on by the flooding was the sudden collapse of a New York State Thruway bridge over Schoharie Creek just west of Amsterdam, NY on the morning of April 5th. Ten people died as a result of having plunged with their vehicles into the flood-swollen creek either with or shortly after the bridge collapse. The bridge, which carried an average of 15,519 vehicles a day, may take over a year to replace, during which a large section of the highway will have to remain closed.



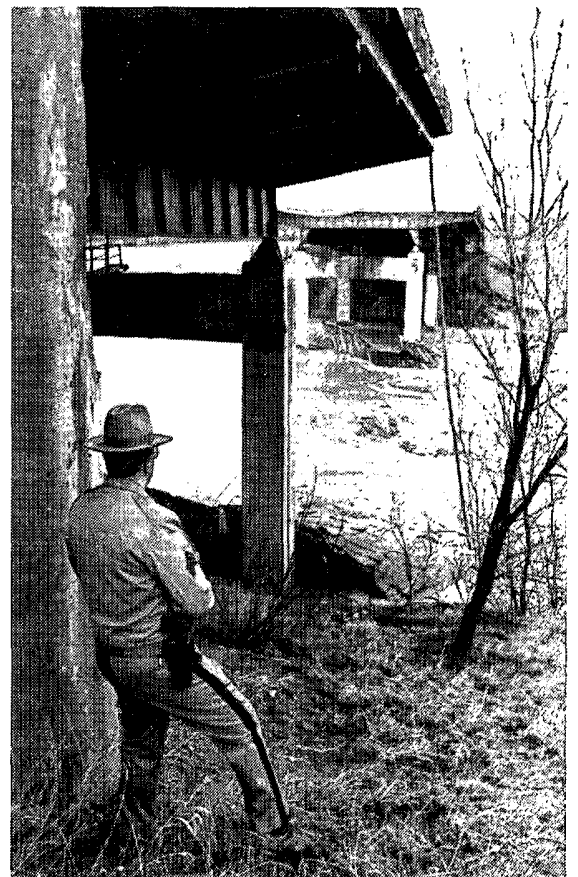
An aerial view toward the west of the gap in the New York State Thruway left by the collapse of the 31-year-old, 540-foot-long bridge over Schoharie Creek west of Amsterdam. ---Photo by and courtesy of The Recorder, Amsterdam, NY.



Overhead view of the bridge's crumpled support columns and road surface amid the swirling floodwaters of the creek. Note the median guardrail that still stretches across the void.



Engineers and officials survey the disaster site to determine the cause of the collapse. The bridge was last repaired 5 years ago and passed inspection only one year prior to its failure.



An officer watches the floodwater eat away at the remains of the bridge as he patrols the site (above); other emergency personnel prepare to remove a victim from a vehicle found downstream of the site (left).

---All four photos by and courtesy of The Recorder, Amsterdam, NY.

STORM DATA AND UNUSUAL WEATHER PHENOMENA

APRIL 1987

PLACE	DATE	TIME - LOCAL STANDARD	LENGTH OF PATH (MILES)	WIDTH OF PATH (YARDS)	NO. OF PERSONS		ESTIMATED DAMAGE		CHARACTER OF STORM
					KILLED	INJURED	PROPERTY	CROPS	
1 ALABAMA									
AL2001-002-003-004-005-006-007-008-009-010-011-012 North, North-Central, and South-Central- Alabama	01	0100-0900CST			0	0	5	0	Cold
A damaging freeze and frost occurred in Alabama during the early morning hours. Temperatures fell well into the 20's over about the northern two-thirds of the state. Record low temperatures for so late in the season were established at several locations. The freeze occurred just as most of Central Alabama's peach and other fruit trees were in full bloom. Estimations were that growers lost a large part of the year's peach crop.									
AL2001-002-003-004-005-006-007-008-009-010-011-013-014 North, North-Central, Central and South-Central- Alabama	03	0230-0800CST			0	0	5	0	Snow
A freak heavy snowfall occurred over much of the state, with heaviest snowfall amounts in northeast, north-central and east parts of Alabama. A low pressure center across south Alabama drew Gulf moisture northward into a band of cold air that slipped south from Canada. The Birmingham Metro area recorded 5 to 7 inches while Ft. Payne in Northeast Alabama received 8-9 inches. Lightning and thunder accompanied the snow in some areas while snow flurries fell as far south as the Mobile area. In most areas this was the first measurable snow to occur in April. In Mobile, it was the first snow ever reported in the month of April since records began in 1872.									
Numerous power outages were reported statewide as fallen trees downed power lines and blocked roadways. Many secondary roads were impassable while numerous weather-related traffic accidents were reported. Many schools and businesses were closed due to icy roads. Sunshine and warming temperatures melted much of the snow by mid-day.									
Morgan County	14	1734CST			0	0	?	?	Hail (0.75)
Hail 3/4 inch in diameter fell in Hartselle.									
Jackson County	14	1806CST			0	0	?	?	Hail (0.75)
Heavy rain and 3/4 inch hail fell at Scottsboro.									
Madison County	14	1820CST			0	0	4	?	TSTM Wind
Strong winds ripped the roof from several apartment buildings in Huntsville. The storm also felled trees and downed power lines in that city.									
Madison County	14	1828CST			0	0	?	?	Hail (0.75)
3/4 inch hail fell at Meridianville and Hazel Green.									
Cullman County	14	1830CST			0	0	?	?	Hail (1.75)
14	1830CST				0	0	1	?	TSTM Wind
Golf ball size hail fell at Fairview in north Cullman County. High winds ripped loose a section of a chicken house.									
DeKalb County	14	1857CST			0	0	?	?	Hail (0.75)
3/4 inch hail fell near Geraldine and Peeks Corner.									
DeKalb County	14	1915CST			0	0	?	?	Hail (0.75)
3/4 inch hail fell at Ft. Payne.									
Jackson County	14	1925CST			0	0	?	?	Hail (1.75)
Golf ball size hail fell at Scottsboro.									
Jackson County	14	2025CST			0	0	?	?	Hail (0.75)
3/4 inch hail fell at Bridgeport.									
2 ARIZONA									
Pinal County, SS Casa Grande	28	1632MST			0	0	0	0	Funnel Cloud
A sheriff's deputy reported a small funnel cloud that lasted 1 or 2 minutes over open farm fields.									
3 ARKANSAS									
Lonoke County	04	1245CST			0	0	3	-	Dust Devil
A very small scale circulation formed over a Cabot residence. The sky was clear at the time. The whirlwind took a storage shed off its concrete slab and lifted it about 100 feet into the air, according to an eyewitness account. Among the contents damaged were a tiller and a lawn mower. The shed itself was demolished.									
— ARKANSAS									
Faulkner County	10	afternoon			0	1	-	-	Lightning
A 19-year-old student at Hendrix College was knocked to the ground by lightning as she walked on campus. She was treated and released at the hospital.									
Howard County	11	1845CST			0	0	-	-	Hail (1.00")
One-inch hail was reported at Nashville by a cooperative observer.									
Clark County	11	2000CST			0	0	-	-	Hail (1.75")
Golfball-sized hail was reported at Arkadelphia.									
Pulaski County	11	2100CST			0	0	-	-	Hail (1.75")
Golfball-sized hail was reported at the western end of the county by the public.									
Perry County	11	2235CST			0	0	-	-	Hail (1.60")
Hail, slightly smaller than golfball, was reported by a spotter in Adona.									
Crittenden County	11	2240CST			0	0	-	-	Hail (2.75")
The public reported baseball-size hail at Horseshoe Lake.									
Conway County	11	2300CST			0	0	-	-	Hail (1.75")
Golfball-sized hail was reported at Opello.									
Perry County	11	2300CST			0	0	-	-	Hail (1.75")
Golfball-sized hail was reported by police at Bigelow.									
Newton County	13	1025CST			0	0	4	-	Thunderstorm Wind
Thunderstorm gusts damaged a barn, one camper, outbuildings and a home, as well as uprooting several trees in Jasper. Another home had its porch blown down.									
Garland County	13	1105CST			0	0	4	-	Lightning
Lightning started a fire at a Hot Springs residence. Most of the \$10,000 damaged occurred in the utility room.									
Sebastian County	13	1150CST 1/4	200	0	0	5	-	-	Tornado (F1)
Lavaca was struck by a small tornado which traveled northeast. It touched down 1 mile east of the town and stayed on the ground for one-quarter mile. It damaged three homes and destroyed another. One young man received minor bruises while diving into the bathtub. Many sheds and about 15 barns were levelled, as well as many trees.									
Crawford County	13	1215CST			0	0	4	-	Thunderstorm Wind
The Crawford County Fairgrounds at Mulberry received extensive wind damage from a thunderstorm. One large tree was blown down, blocking the entrance to the fair. About half of the fencing surrounding the grounds was blown down. Several of the buildings had roof damage. Several homes had roof damage also at Mulberry, along with several businesses.									
Franklin County	13	1215CST			0	0	5	-	Thunderstorm Wind
Strong gusts damaged a total of 20 buildings in Branch. There were two mobile homes, one church, a barber shop, and several homes included in those 20 which suffered damage. Many trees were also blown down. About the same time, a mobile home in Charleston sustained wind damage.									
Yell County	13	1215CST			0	0	3	-	Thunderstorm Wind
A dairy barn and several poultry houses sustained roof damage from thunderstorm gusts 3 miles south of Waveland.									
Logan County	13	1219CST			0	0	4	-	Thunderstorm Wind
At Paris, winds blew down a hangar onto 2 airplanes housed inside. Two poultry houses and one barn were also destroyed in Paris. Four other barns were destroyed in Booneville. One home in Subiaco received minor roof damage.									

STORM DATA AND UNUSUAL WEATHER PHENOMENA

APRIL 1987

PLACE	DATE	TIME - LOCAL STANDARD	LENGTH OF PATH (MILES)	WIDTH OF PATH (YARDS)	NO. OF PERSONS		ESTIMATED DAMAGE		CHARACTER OF STORM
					KILLED	INJURED	PROPERTY	CROPS	
— ARKANSAS									
Clark County	13	1235CST			0	0	-	-	Thunderstorm Wind
			A house and a barn had wind damage in Whelen Springs.						
Madison County	13	1255CST			0	0	-	-	Thunderstorm Wind
			Two barns, a poultry house, and other buildings received wind damage at Aurora.						
Pope County	13	1300CST			0	0	4	-	Thunderstorm Wind
			One house and two mobile homes were damaged by strong gusts at Dover. Several trees were uprooted as well.						
Carroll County	13	1330CST			0	5	5	-	Thunderstorm Wind
			Five mobile homes were destroyed and 8 were damaged at a trailer park 4 miles north of Green Forest. Winds also damaged the roof on a school and two barns in the Green Forest area. Three injuries occurred in one mobile home, one occurred at another, and the fifth one happened inside the church.						
Saline County	13	1330CST			0	0	4	-	Thunderstorm Wind
			A house under construction, in Bryant, was flattened by strong gusts.						
Boone County	13	1335CST			0	0	5	-	Thunderstorm Wind
			Gusts from a thunderstorm destroyed an unoccupied mobile home. A portable classroom was crushed, three classrooms were unroofed completely, and one partially unroofed. All of these structures were located on the school campus at Bergman. A total of 15 homes plus some barns and other buildings were damaged in Bergman. Also, one barn and one small grocery store were heavily damaged at Olvey.						
Marion County	13	1404CST			0	0	3	-	Thunderstorm Wind
			A mobile home was damaged by strong gusts in Yellville.						
Baxter County	13	1420CST			0	0	-	-	Thunderstorm Wind
			A tree was blown down 2 miles southwest of Mountain Home, creating power outages at Cotter, Cassville, and the southwestern section of Mountain Home itself.						
Chicot County	13	1555CST			0	0	-	-	Hail (0.75")
			Penny-size hail was reported by park personnel at Lake Chicot State Park, about 7 miles east-northeast of Lake Village.						
4 CALIFORNIA, Northern									
Monterey County, 5th Salinas	03	0814PST	1/8	30	0	0	5	4	Tornado (F0)
			A single-cell thunderstorm about 100 miles east of an approaching comma cloud (vorticity center) spawned a small tornado that touched down in a nursery/greenhouse area.						
4 CALIFORNIA, Southern									
CAZ013-014-019	18	all day			0	0	?	?	High Winds
			High winds failed to surface along the coastal areas in response to a strong area of low pressure which formed over Arizona. However, the winds in the Owens Valley, the mountains, Mojave Desert, Death Valley, and Antelope Valley gusted in excess of 50 mph. The winds were generally from 20 to 30 mph.						
			1955PST Wind Observations:						
			Daggett	W	32				
			Edwards	NW	17	gusts 33			
			Imperial	W	18	gusts 24			
			Palm Springs	WNW	29	gusts 41			
			Sandberg	NW	37				
			Victorville	W	15	gusts 24			
			Lancaster	WNW	28	gusts 34			
— CALIFORNIA, Southern									
CAZ012-013-019	20	1340PST			0	0	?	?	High Winds
			Rialto Airport reported winds from the north at 35 to 40 mph with peak gusts of up to 56 mph.						
CAZ011-012-013 Pomona	27	1330PST			0	0	?	?	Thunderstorms
			Thunderstorms developed over the mountain and desert areas during the early afternoon. Later in the afternoon the storm intensities increased and frequent lightning was reported. Five thousand people in Pomona were without electricity. In addition, rain in excess of one inch had fallen in a very short time.						
5 COLORADO									
Southern Mountains (COZ 008)	4-5				0	0	0	0	Heavy snow
			10 to 18 inches of snow fell in the San Juan Mountains.						
Mountains and Northeast (COZ 002-004-008-011-014)	12				0	0	0	0	Snow
			Snow fell in the mountains and northeast, causing traffic tieups on the roads and at the airports. Flights were delayed for 1 1/2 hours at Denver's Stapleton Airport, and southbound Interstate 25 was closed at Monument Hill, in El Paso County, for a time due to numerous traffic accidents. Snowfall totals ranged from 6 to 12 inches at most spots in the mountains, but Red Mountain Pass in the San Juans had 16 inches. Many spots in the eastern foothills from west of Colorado Springs northward also had 6 to 12 inches. 4 inches fell in Denver.						
Front Range (COZ 011)	19	1530-1900MST			0	2	4	0	High winds
			A strong cold front roared south over the plains of northeastern Colorado, bringing an abrupt end to an unusually warm period. The front generated winds that gusted as high as 72 mph at Brighton, in Adams County, at 1800 MST. A gust of 67 mph was measured in Thornton at 1734; gusts reached 54 mph at Denver's Stapleton Airport at 1803. 50 to 70 mph winds were common along the Front Range from Denver northward. The winds kicked up huge clouds of dust that lowered visibility to as little as 100 yards. The gusts flipped a light plane taxiing at Stapleton Airport, slightly injuring two people on board. The strong front spawned swirling tornado-like winds in several spots. These are known as gustnadoes; one of them destroyed a barn near Wellington, in Larimer County, at 1600 MST.						
Northern Colorado (COZ 001-002-011)	20				0	0	0	0	Snow
			Snow fell in northern Colorado on the heels of the previous evening's cold front. 14 inches buried Berthoud Pass in the Rockies, with 6 to 12 inches at many other spots in the northern mountains. 6 inches fell at Meeker in far northwest Colorado. 6 to 12 inches fell in the northeastern foothills. Denver had 3 inches of snow, with the usual flight delays at the airport.						
6 CONNECTICUT									
CIZ001-002-003-004 Central and Northern Portions	01-10				0	0	6	?	Flooding
			Very heavy rainfall amounts on the last day of March and from the 4th through the 7th of April combined with already high river and stream levels from snowmelt to the north of the state to produce considerable flooding. However, the flooding did not approach the levels of 1984. About 200 families were evacuated along the state's three major rivers as from 3.5 to 5.5 inches of rainfall occurred between the 4th and the 6th. The Connecticut River at Hartford, which reached 25 feet on the 1st, rose to 26 feet on April 7th, or 10 feet above flood stage. Those who have come to expect flooding along the rivers in the Spring received the flooding, but the dikes and flood control systems along the rivers functioned very well and prevented much more serious flooding. However, in New Milford the Housatonic ravaged through town damaging many of the town's roads and doing more damage than the 1984 floods. In Oxford, the Housatonic crested some 10 feet above flood level and there was considerable damage. In Litchfield, there was heavy damage to roads, resulting in repair costs of up to \$20,000. Statewide, the damage from this flood was considered to be generally minor when compared to damaging floods of the past.						

STORM DATA AND UNUSUAL WEATHER PHENOMENA

APRIL 1987

PLACE	DATE	TIME - LOCAL STANDARD	LENGTH OF PATH (MILES)	WIDTH OF PATH (YARDS)	NO. OF PERSONS		ESTIMATED DAMAGE		CHARACTER OF STORM
					KILLED	INJURED	PROPERTY	CROPS	
7 DELAWARE									
DEZ003 Northern Delaware	05	1000EST			0	0	3	0	Heavy Snow
A low pressure center spread rain into the mid Atlantic coast area on Saturday, which changed to snow on the next morning in northern Delaware. Two to five inches of snow fell in New Castle County before the snow ended on Monday morning, the 6th.									
8 FLORIDA									
Franklin Co., Carrabelle	03	0930EST	1.0	30	0	0	3	0	Tornado (F0)
A waterspout-tornado came ashore and damaged a roof and downed power poles and trees.									
Madison Co., Lee	03	1115EST	1.0	30	0	0	3	0	Tornado (F0)
A tornado damaged a house roof, a barn, and a chicken house. Several power poles were downed.									
Highlands Co., Lake Placid	11	UNK			0	0	4	-	TSTM Wind (60)
A nursery shadehouse was destroyed by high wind.									
Sumter Co., Bevilles Corner 4mi SE Bushnell	15	0920EST	12.0	250	0	0	5	0	Tornado (F2)
A tornado started at Bevilles Corner and went 12 miles toward the east-northeast. Four homes were destroyed and ten homes were damaged. Several outbuildings were destroyed.									
Hernando Co., Brooksville	15	0945EST			0	0	4	0	TSTM Wind (60)
High wind destroyed a house roof and destroyed a screened porch.									
Lake Co., Mount Dora	15	1015EST	3.0	100	1	7	6	0	Tornado (F2)
Forty mobile homes, twelve homes, and eighteen businesses were destroyed. A 68-year-old female was killed inside a mobile home. Ten large oak trees were destroyed. F68M									
Broward Co., Miramar	15	1230EST			0	2	3	0	TSTM Wind (60)
Two people were injured when a construction trailer overturned. Two trees were uprooted and a chain-link fence was blown down.									
Dade Co., Carol City	15	1300EST			0	0	3	0	TSTM Wind (60)
The roof of a mobile home was destroyed, a shed was destroyed, and several trees were downed.									
Martin Co., Jensen Beach	15	1610EST			0	0	3	0	TSTM Wind (75)
High wind overturned an automobile. Trees and power lines were downed by high wind.									
9 GEORGIA									
Bulloch County, 7N Statesboro	03	1230EST			0	0	3	0	Tstm.Winds
Thunderstorm winds destroyed a combination garage-barn 7 miles north of Statesboro.									
Walker County Catoos County	14	2135EST			0	0	?	0	Hail (0.75)
	14	2150EST			0	0	?	0	Hail (1.13)
Hail 3/4 inch in diameter fell in Kensington and hail up to 1 and 1/8 inches fell 3 miles north of Ringgold.									
Dawson County	15	0245EST			0	0	?	0	Tstm.Winds
Habersham County	15	0330EST			0	0	?	0	Tstm.Winds
Oconee County	15	0430EST			0	0	?	0	Tstm.Winds
Madison County	15	0435EST			0	0	3	0	Tstm.Winds
Thunderstorm winds downed trees in the southwest part of Madison County near the Etoway River, near Tallulah Falls in Habersham County, and in northwest Oconee County near the Barrow County line. Trees were downed and roofs damaged by thunderstorm winds in the northern part of Madison County.									
Madison County	23	1600EST			0	0	?	3	Hail, Lightning, Tstm.Winds
Thunderstorm winds downed several trees and golfball size hail fell in Hull and Comer. Lightning killed several head of cattle near Comer.									
GEORGIA									
Greene County	23	1800EST			0	0	?	0	Tstm.Winds
Thunderstorm winds downed trees onto power and telephone lines in scattered locations.									
10 IDAHO									
IDZ008 - Nez Perce Co., Lewiston	8	0648 PST			0	0	3	0	HIGH WIND
The Lewiston WSO recorded wind gusts to 46 knots while the Lewiston - Nez Perce Co. Airport FAA Control Tower reported gusts to 57 knots. There were power outages and downed trees and traffic signs in the area.									
IDZ003	8	1000 MST- 1900 MST			0	0	3	0	HIGH WIND
Strong winds following a Pacific cold front caused extensive blowing dust which closed I-15 near Osgood for four hours and caused at least one freeway accident. Visibilities were frequently near zero. Idaho Falls Airport recorded wind gusts to 44 knots while KIFI-TV in Idaho Falls had an unofficial wind gust to 55 knots at 1500 MST.									
IDZ008 - Lewiston, Moscow, Orofino, Genesis, and Spalding, Lewis, Nez Perce, Latah, and Clearwater Counties	10	2200 PST			0	0	3	0	TSTM WIND (57)
Thunderstorm wind and rain caused power outages, downed trees, and power pole fires. The Lewiston - Nez Perce Airport recorded a wind gust to 57 knots.									
IDZ002-003	11	0900 MST- 1700 MST			0	0	0	0	HIGH WIND
Strong winds between 25 and 45 mph behind a cold front buffeted the area. No reports of damage were received.									
IDZ003 - Madison Co., Rexburg	13	unknown			0	0	3	0	HIGH WIND
Wind gusts to 45 knots blew down a storefront, neon sign in downtown Rexburg.									
IDZ001 - Canyon Co., Melba	15	afternoon			0	0	3	0	TSTM WIND
A roof was blown off a mobile home.									
IDZ008 - Latah Co., Moscow	17	2000 MST			0	0	3	0	TSTM WIND
Strong winds caused power outages and downed a power pole three miles north of Endicott.									
IDZ003 - Madison, Jefferson, and Bingham Counties; Rexburg, Rigby, and Shelley	18	2230 MST			0	0	3	0	TSTM WIND
Winds producing blowing dust created small fires on power poles and power outages.									
IDZ004 - Franklin Co., Linrose- Fairview area	18	evening			0	0	4	0	TSTM WIND
Wind gusts were estimated at between 50 and 60 mph in the outlying areas of Franklin County. Patios and sheds were toppled, and shingles were blown off roofs. Two hay sheds valued at \$20,000 were destroyed in Fairview.									
IDZ003-Madison Co., near Rexburg	27	1430 MST	short narrow		0	0	0	0	Tornado (F0)
A tornado was sighted by the public just south and east of Rexburg. It touched down only briefly, and no damage was reported.									
IDZ003 - Madison Co., Rexburg	29	1628 MST			0	0	2	0	TSTM WIND (56)
Ricks College at Rexburg recorded a 56 knot wind gust. A few trees were blown down.									

STORM DATA AND UNUSUAL WEATHER PHENOMENA

APRIL 1987

PLACE	DATE	TIME - LOCAL STANDARD	LENGTH OF PATH (MILES)	WIDTH OF PATH (YARDS)	NO. OF PERSONS		ESTIMATED DAMAGE		CHARACTER OF STORM
					KILLED	INJURED	PROPERTY	CROPS	
IDAHO									
Twin Falls Co., Twin Falls	30	1330 MST			0	0	3	0	TSTM WIND (41), HAIL (1.00)
A thunderstorm produced winds to 41 knots and soft hail one inch in diameter.									
Ada Co., Boise	30	1210 MST			0	0	4	0	TSTM WIND
Payette Co., Payette	30	1215 MST			0	0	5	0	TSTM WIND
Gem Co., Emmett	30	1230 MST			0	0	4	0	TSTM WIND
Washington Co., Cambridge	30	1250 MST			0	0	4	0	TSTM WIND
Malheur Co., Ontario	30	1250 MST			0	0	3	0	TSTM WIND (50)
Elmore Co., Mt. Home	30	1320 MST			0	0	2	0	TSTM WIND, HAIL (0.5)
Adams Co., New Meadows	30	1340 MST			0	0	4	0	TSTM WIND
Valley Co., McCall and Cascade	30	1348 MST			0	0	5	0	TSTM WIND (50)
Severe and near severe thunderstorms riding a strong cold front created havoc through much of southwest Idaho. A blown down tree severely damaged a car in downtown Boise. A 77-foot section of roof was ripped off of Westside School in Payette. There were numerous blown down trees, a damaged car, two small airplanes tipped over, and a cattle shed blown over in Emmett. Cambridge reported roofs blown off of mobile homes. Barns and houses; cars damaged by fallen trees; collapsed sheds and barns; and one fallen shed killed a racehorse. There were numerous fallen trees in the McCall-New Meadows area which damaged homes, sheds and vehicles. Two large trees blocked Hwy. 55 near the Bear Basin turnout west of McCall. Also, part of the roof was blown off the radio station in McCall.									
Latah Co., Genesee and Bovill	30	1430 PST			0	0	5	6	FLASH FLOOD, HAIL (.75)
Clearwater Co., Orofino and Weippe	30	1440 PST							TSTM WIND, LIGHTNING
Thunderstorms along a Pacific cold front produced heavy rains (1.5 inches in 20 minutes 11 miles southeast of Moscow) and hail "as large as your thumb". Strong winds were also reported in Bovill. Water poured over the curbs in Orofino. Extensive crop loss in the Moscow/Genesee area was estimated at \$500,000 or more. Spence Road and Lenville Road were severely damaged for a five mile stretch. Lightning resulted in the death of seven cows and four calves near Weippe.									
Shoshone Co., just west of Wallace, Pritchard, and Murray	30	1600 PST			0	0	5	0	TSTM WIND
Thunderstorm winds damaged numerous trees, garages, greenhouses, and homes. There were extensive power outages.									
Fremont Co., St. Anthony; Madison Co., Rexburg; and Bonneville Co., Idaho Falls	30	1730 MST			0	0	3	0	TSTM WIND (46)
Pea size hail hit St. Anthony. Several sheds and fences were blown over in Rexburg and Idaho Falls.									
Fremont Co., Ashton	30	1825 MST			0	0	3	0	TSTM WIND (52)
ILLINOIS									
Champaign County, 2 S Mahomet	11	1546CST	1	?	0	0	0	0	Tornado(F0)
A brief tornado touchdown in an open area caused no damage, but its path, as indicated by flattened vegetation, extended one mile.									
Montgomery County, 7 E Nokomis	13	0730CST	.5	narrow	0	0	4	0	Tornado(F1)
Several farm outbuildings, including a 2-story barn, were demolished by a small tornado which moved northeast across a farm. Debris fell to earth one mile northeast of the touchdown area.									
Peoria County, Peoria	13	0857CST			0	0	4	0	Thunderstorm Wind (40)
Thunderstorm winds estimated at 45mph blew down several large old trees, damaging a few houses and automobiles.									
Shelby County, Shelbyville	13	0920CST			0	0	5	0	Lightning
A large barn in rural Shelbyville was destroyed by a lightning-caused fire. A truck and car parked nearby were also destroyed.									
Christian County, 2W and 6N of Morrisonville	13	0930CST	3	25	0	2	4	0	Tornado(F1)
A small tornado moved across 5 farms, damaging or destroying several structures. The Davis farm sustained considerable damage, and it was there that the injuries occurred.									
Cook County, Chicago	13	1655CST			0	2	3	0	Thunderstorm Wind(45)
Gusty thunderstorm winds caused scattered minor damage across the west and south sides of the city. Two injuries occurred when a 6-foot plate glass window was shattered in a west side grocery store.									
Henry County, Osco	14	1415CST	.5	narrow	0	0	4	?	Tornado(F0)
A small tornado, observed by farm workers, moved west to east through a feeder farm, destroying 20 hog hutches and killing hogs.									
INDIANA									
Warren County, Green Hill	11	1727EST	short	narrow	0	0	0	0	Tornado (F0)
A tornado touched down briefly in a field at Green Hill. Power lines were downed and a corn crib was damaged.									
Warren County, 2W Pine Village	11	1750EST			0	0	0	0	Thunderstorm Wind
Strong winds downed several trees near Pine Village.									
Tippecanoe County, 9W Lafayette	11	1825EST	0.1	20	0	0	?	0	Thunderstorm Wind
Strong thunderstorm winds downed a swath of trees in Tippecanoe County. The Sheriff's Department reported a damage path about 200 yards long and 20 yards wide, consisting of tree damage only. The damage was in extreme west-central Tippecanoe County, 9 miles west of Lafayette and one mile south. The exact location was at County Road 950W, one mile south of County Road 75S.									
Fountain County, Attica	11	1839EST			0	0	0	0	Thunderstorm Wind
Strong winds downed trees near Attica.									
Hancock County, Gem	11	1900EST			0	0	0	0	Thunderstorm Wind
A grain bin was knocked off its foundation and trees were downed at Gem. Also, telephone poles were downed by strong winds 3 miles northeast of County Road 600W.									
Tipton County, Kempton	11	1945EST	short	narrow	0	0	0	0	Tornado (F0)
The Kempton Fire Department reported a brief tornado touchdown on State Road 28 in Kempton. No damage was reported.									
Marion County, Indianapolis	11	1957EST			0	0	2	0	Thunderstorm Wind
Strong winds downed trees in eastern Indianapolis.									
Tippecanoe County, 4NW Lafayette	11	2015EST			0	0	0	0	Hail (0.75)
Tipton County, Sharpville to Howard County, 1W Hemlock	14	1445EST	4	narrow	0	0	4	0	Tornado (F1)
A small tornado skipped along a path from about 1/2 mile east of Sharpville in Tipton County to 1 mile west of Hemlock in southern Howard County. Its path length was 3 miles in Tipton County and 1 mile in Howard County. The tornado blew over a tree and large boat, snapped off some power poles, dropped a tree onto a barn, and damaged a trailer.									

STORM DATA AND UNUSUAL WEATHER PHENOMENA

APRIL 1987

PLACE	DATE	TIME - LOCAL STANDARD	LENGTH OF PATH (MILES)	WIDTH OF PATH (YARDS)	NO. OF PERSONS				ESTIMATED DAMAGE	CHARACTER OF STORM
					KILLED	INJURED	PROPERTY	CROPS		
INDIANA										
Hamilton County, Noblesville	14	1500EST			0	0	4	0		Thunderstorm Wind
										Signs were blown down at a shopping center in Noblesville, and numerous reports of trees blown down over roads were received from throughout the county.
Wabash County, Wabash	14	1545EST			0	0	0	0		Hail (0.75)
										The Wabash County Sheriff's Department reported 3/4 inch hail in the town of Wabash.
13 IOWA										
Northwest Iowa IA2001-005	01 04	All Day- All Day			0	0	0	0		Flooding
										Minor flooding from heavy rains in March continued along the Little Sioux and northern portions of the Des Moines rivers.
Southwest into Central Iowa IA2006-009-010-013	14 19	All Day- All Day			0	0	0	0		Flooding
										Minor flooding resulted along the Mishnaborna, Chariton, Des Moines and Raccoon rivers due to rainfalls of 1 to 3 inches on the night of the 13th and on the 14th.
Polk County, Des Moines	14	Morning			0	0	3	0		Urban Flooding
										Heavy rains of 1 to 2 inches fell during the morning, causing some minor urban street flooding in Des Moines.
Davis County and Wapello County, 2N Floris to 5S Ottumwa	14	1305 CST- 1315 CST	4	10	0	0	0	4	0	Tornado (F1)
										A tornado touched down about 2 miles north of Floris and smashed a 2-year-old corrugated tin barn. It was picked up and smashed on an adjacent road. Considerable tree damage occurred in the area.
Wapello County, 5SE Ottumwa	14	1319 CST- 1335 CST	1	5	0	0	0	0	0	Tornado (F0)
										A small tornado touched down briefly, southeast of Ottumwa.
Keokuk County, Keota	14	1515 CST- 1520 CST	2	10	0	0	5	0	0	Tornado (F1)
										A tornado touched down just southwest of Keota destroying a 14x20 foot chicken house. A 30-foot sheet of tin roofing was torn off the Keota Post Office as well as some of the roofing off a local manufacturing plant.
Lee County, Keokuk and Fort Madison	14	1950 CST			0	0	4	0		Thunderstorm Winds
										Thunderstorms moved into Lee County with wind gusts of up to 70 MPH causing tree and power line damage. A tow boat pushing 15 barges was pushed onto a sand bar on the Mississippi River near Keokuk.
Kossuth County, Burt	26	1710 CST			0	0	3	0		Hail (1.50)
										A thunderstorm produced hail just smaller than golf ball size.
Kossuth County, 3 W Algona	26	1738 CST			0	0	0	0		Funnel Cloud
										A funnel cloud was reported 3 miles west of Algona.
Hamilton County, Williams	26	1922 CST			0	0	3	0		Hail (1.75)
Hamilton County, SE Webster City	26	1923 CST			0	0	3	0		Wind (60+ MPH)
										Thunderstorms produced golf ball size hail and strong winds over Hamilton County. Hail broke out the windshield of a car on Interstate 35 near Williams. High winds blew over a sign on US 20 about 5 miles east of Webster City.
Story County, 8NE Ames	26	2002 CST			0	0	3	0		Hail (1.0)
										Dime size hail was reported in a thunderstorm.
Linn County, Whittier	26	2049 CST			0	0	4	0		Winds (60+ MPH)
										Thunderstorm winds downed trees and power lines in Whittier, knocking out power to 145 homes.
Muscatine County, 38 SW Moline	26	2215 CST			0	0	3	0		Winds (60+ MPH)
										Winds from a thunderstorm downed trees and power lines.
Louisa County, 5N Wapello	26	2220 CST			0	0	4	0		Winds (60+ MPH)
										Winds from a thunderstorm blew down a barn, damaging a car and boat inside. Numerous trees were snapped off at the ground.
Van Buren County, 5W Keosauqua	26	2220 CST			0	0	5	0		Winds (75 MPH)
Van Buren County, 5SW Bonaparte	26	2230 CST			0	0	5	0		Winds (75 MPH)
										A thunderstorm moved through the county. Winds tore off a roof on a barn southwest of Bonaparte.
14 KANSAS										
Lyon Co: 3S Emporia	12	2117CST			0	0	2	0		Hail (1.75)
5 side of Emporia	12	2140CST			0	0	0	0		Hail (.75), Funnel
Osage Co: Osage City	12	2246CST			0	0	0	0		Hail (.75)
Overbrook	12	2320CST			0	0	3	0		Hail (2.0)
										A thunderstorm formed near Emporia and dropped large hail as it moved northeast through Osage County. Little damage resulted.
Cowley Co: 3E Arkansas City	12	2230CST			0	0	0	0		Hail (.75)
Dexter	12	2253CST			0	0	0	0		Hail (.75)
Dexter	12	2330CST			0	0	0	2		Hail (1.75)
Butler Co: El Dorado	12	2246CST			0	0	0	2		Hail (1.0)
5W & 2S El Dorado	12	2315CST			0	0	0	2		Hail (2.0)
Chautauqua Co: Cedar Vale	12	2235CST			0	0	0	2		Hail (1.5)
Peru to Chautauqua	12	2250 to 2300CST			0	0	3	2		TSTM Wind
Sumner Co. South Haven	12	2330CST			0	0	0	2		Hail (1.0)
										A series of severe thunderstorms dropped large hail as they moved across Cowley, Butler, Chautauqua and Sumner counties. Strong winds also downed 20 power poles, uprooted trees, destroyed several outbuildings and tore half the roof from a barn between Peru and Chautauqua.
Linn Co. 4SE Parker	13	0000CST			0	0	5	0		Lightning
										Lightning set fire to a home southeast of Parker. The house and contents were a total loss.
KSZ007-008-010-011 Central and North-Central Kansas	13- 14	1700 to 1200CST			0	0	6	7		Flood
										Two to four inches of rain fell upon much of Central and North-Central Kansas and resulted in flooding along many small streams and the Saline, Solomon and Smoky Hill rivers. The rains struck an area already saturated by earlier downpours.
										The most significant flooding occurred along the Saline River Basin. Paradise Creek flooded above Wilson Reservoir and surrounded about 30 homes in Natona. The creek there was at its highest level since 1968. Flooding on Wolf Creek required the evacuation of one family at Lucas. Considerable flooding also occurred at Tescott. The Saline River crested 6.4 feet above flood stage at Lincoln the morning of April 15th and 4.9 feet above at Tescott the evening of the 16th.
										Other less serious flooding occurred in the Solomon and Smoky Hill basins. Several homes and streets in the south part of Ellsworth were flooded by the Smoky Hill River. The Solomon reached crests 3 to 8 feet above flood stage from Beloit on the evening of the 14th to Niles the morning of the 18th. The Smoky and Solomon flooded thousands of acres of farmland but did little other damage.
										Floodwaters on Blood Creek at Holsington also forced twelve people from their homes on the 14th and 15th.
										No fatalities or injuries resulted, but a mail carrier was nearly killed near Jamestown. He drove his four-wheel-drive vehicle into floodwaters of Buffalo Creek east of Jamestown. Two men rescued him as his truck started sinking.
Wabaunsee Co. Harveyville	29	2125CST			0	0	0	0		Hail (.75)
										A thunderstorm dropped 3/4 inch hail for a brief time at Harveyville. No damage resulted.
Johnson Co. Prairie Village	29	2150CST			0	0	3	0		Hail (1.0)
										Hailstones an inch in diameter fell in Prairie Village. Little damage resulted.

STORM DATA AND UNUSUAL WEATHER PHENOMENA

APRIL 1987

PLACE	DATE	TIME - LOCAL STANDARD	LENGTH OF PATH (MILES)	WIDTH OF PATH (YARDS)	NO. OF PERSONS		ESTIMATED DAMAGE		CHARACTER OF STORM
					KILLED	INJURED	PROPERTY	CROPS	
15 KENTUCKY									
KYZ008 Southeast Kentucky	2-5	0900 EST			0	0	4	2	Heavy Snow
	<p>Early April 1987 brought one of the all-time heaviest snowfalls to southeast Kentucky causing extensive problems. The snow began falling mid-morning Thursday, April 2. The snow remained light through Thursday evening with 1 to 2 inches accumulation reported mainly along the Kentucky-Virginia border. By dawn, Friday, April 3rd, four inches of snow had fallen over the Cumberland Mountain region of Southeast Kentucky. The heavy snow continued and gradually spread northward over Eastern Kentucky and by Friday evening accumulation totals ranged from 7 inches at the Weather Office in Jackson to more than one and one-half feet in the Kentucky counties along the Virginia Border. The storm had virtually paralyzed southeast Kentucky by the evening of April 3, 1987. The heavy snow had broken many power lines, resulting in more than 18,000 residents without electricity, some until Monday, April 6. Emergency shelters were set up at several locations for those without heat. Roads were very hazardous and even impassable in some areas due to downed trees. A second surge of heavy snow fell Saturday afternoon, April 4th, through Sunday morning, April 5. By noon April 5th, the storm system had buried most of Southeast Kentucky in 1 to 3 feet of snow with the highest totals in Letcher and Pike counties. Gusty northwest winds produced considerable drifting with reports of drifts more than ten feet deep in parts of Letcher County.</p>								
Letcher County Pike County	4-6	Evening			1	0	4	0	Flooding
	<p>The snowmelt from the early April snowstorm resulted in flooding of the smaller streams and creeks in Letcher and Pike counties. Traffic was restricted to emergency vehicles only in the Fleming-Neon community of northeast Letcher County. Numerous locations in Pike County reported water over roads and bridges. A few homes were evacuated along the Red Creek in Pike County. The snowmelt occurred over a 12-hour period. Melting snowfall also resulted in several mudslides that blocked roadways.</p> <p>A twelve-year-old boy was riding his bicycle along US 119 when he slid into a flood swollen Cram Creek in the Mayking community of Letcher County. Mayking is located 4 miles north of Whitesburg. The young boy was swept downstream by the current into a 30-inch-wide, steel-corrugated culvert where he drowned before rescuers could save him. He was pronounced dead at 2055 EST, April 8, after a 3-hour rescue attempt. M120</p>								
Pike County	16	Early Morning			0	0	2	0	Flash Flood
	<p>A low pressure system moved from Kentucky southeast into North Carolina, causing flash flooding in northern Pike County. Twenty homes were evacuated along the Pond Creek at Toler. Many roads were flooded along the Pond and Johns creeks of northern Pike County. Several schools in the county were closed because of high water and officials closed some area roads and intersections.</p>								
Boyd County	27	1935 EST			0	1	3	0	Strong Thunderstorm
	<p>An Ashland, Kentucky motorist was injured when strong thunderstorms downed a large portion of a tree which struck the car in which the motorist was driving, shattering his windshield. The motorist was admitted to a local medical center with numerous lacerations. Strong thunderstorms in the Ashland area left behind a few other damaged trees that took down power lines, resulting in power interruptions that lasted for as long as 3 hours. The thunderstorms lasted from 1930EST to 1950EST.</p>								
16 LOUISIANA									
Tangipahoa Parish	13	0950CST			0	0	?	?	SVR TSTM-Hail(0.90)
	<p>Nickle size hail fell in Amite from 0950CST to 1000CST.</p>								
St. Mary Parish	13	1420CST			0	0	0	0	Funnel
	<p>A funnel was sighted near Amelia.</p>								
Caddo Parish	13	1150CST			0	0	0	?	SVR TSTM-Wind
Bossier Parish	13	1230CST			0	0	0	0	Funnel
Bossier Parish	13	1230CST			0	0	?	0	SVR TSTM-Wind
Bossier and Webster Parishes	13	1255CST			0	0	0	0	Funnel
Webster Parish	13	1255CST			0	0	?	?	SVR TSTM-Wind
Claiborne Parish	13	1302CST			0	0	0	0	Funnel
Claiborne Parish	13	1302CST			0	0	?	?	SVR TSTM-Wind
Webster Parish	13	1330CST			0	0	?	?	SVR TSTM-Wind, Hail(1.00)
Lincoln Parish	13	1415CST			0	0	0	0	Funnel
Lincoln Parish	13	1415CST			0	0	?	?	SVR TSTM-Wind
Sabine Parish	13	1425CST			0	0	?	?	SVR TSTM-Hail(1.75)
Natchitoches Parish	13	1450CST			0	0	?	?	SVR TSTM-Hail(1.00)
Winn Parish	13	1505CST			0	0	?	?	SVR TSTM-Hail(1.00)
West Carroll Parish	13	1555CST			0	0	5	?	SVR TSTM-Wind
East Carroll Parish	13	1605CST			0	0	0	?	SVR TSTM-Wind
Beauregard Parish	13	1630CST			0	0	?	?	SVR TSTM-Hail(0.75)
	<p>Two lines of numerous severe thunderstorms produced several funnels and widespread reports of straight-line wind and hail damage. A parish by parish summary follows:</p> <p>Caddo Parish: Straight-line winds blew down several trees southwest of Fourforks at about 1150CST.</p> <p>Bossier Parish: A funnel was sighted in downtown Bossier City at about 1230CST. Severe thunderstorm winds damaged several windows and the roof of a Bossier City shopping center at about the same time.</p> <p>Bossier and Webster Parishes: A funnel was sighted on the Bossier-Webster parish line near Lake Badcau (27 miles northeast of Shreveport) at about 1255CST.</p> <p>Webster Parish: Straight-line winds blew down several trees west of Hortman at about 1255CST.</p> <p>Claiborne Parish: A funnel was sighted southeast of Blackburn at about 1302CST. Several trees were blown down by severe thunderstorm winds west of Homer at about the same time.</p> <p>Webster Parish: Several trees were blown over and one inch hail was observed southeast of Sibley at about 1330CST.</p> <p>Lincoln Parish: A funnel was sighted 5 miles northwest of Ruston at about 1415CST. Several trees were blown down by severe thunderstorm winds 8 miles west-northwest of Ruston at about the same time.</p> <p>Sabine Parish: Golfball size hail fell near Florian at about 1425CST.</p> <p>Natchitoches Parish: One inch hail fell west of Campi at about 1450CST.</p> <p>Winn Parish: One inch hail was observed in Atlanta at about 1505CST.</p> <p>West Carroll Parish: Straight-line winds damaged a roof of a store and destroyed a mechanic's shop and a nearby house in Concord at about 1555CST.</p> <p>East Carroll Parish: Several trees were blown down east of Cassoway at about 1605CST.</p> <p>Beauregard Parish: Three-quarter inch hail fell in Deridder at about 1630CST.</p>								
Tensas Parish	13	2130CST			0	0	?	?	SVR TSTM-Hail(1.00)
Madison Parish	13	2230CST			0	0	4	?	SVR TSTM-Wind
Madison Parish	13	2248CST			0	0	?	?	SVR TSTM-Wind(50), Hail(1.75)
	<p>Rapidly-moving, isolated severe thunderstorms produced some wind and hail damage in extreme northeast Louisiana between 2130CST-2248CST. A parish by parish summary follows:</p> <p>Tensas Parish: One inch hail fell in Newellton at about 2130CST.</p> <p>Madison Parish: A trailer was destroyed and three large trees were blown over in Thomastown at about 2230CST. By 2248CST, golfball size hail and 50 KI winds were observed in Mounds.</p>								
17 MAINE ————— NO REPORT RECEIVED									

STORM DATA AND UNUSUAL WEATHER PHENOMENA

APRIL 1987

PLACE	DATE	TIME - LOCAL STANDARD	LENGTH OF PATH (MILES)	WIDTH OF PATH (YARDS)	NO. OF PERSONS		ESTIMATED DAMAGE		CHARACTER OF STORM
					KILLED	INJURED	PROPERTY	CROPS	
18 MARYLAND and D.C.									
MDZ003-006-007 Northern and Eastern Maryland	05	0800EST			0	0	3	0	Heavy Snow
A low pressure center spread rain into the mid Atlantic coast area on Saturday, which changed to snow on Sunday morning in northern Maryland. Two to five inches of snow fell before it ended on Monday morning, the 6th.									
19 MASSACHUSETTS									
MAZ001-004-005-006-007 Berkshire, Franklin, Hampshire, Worcester, Middlesex, Essex, and Norfolk Counties	05-10				1	0	7	6	Floods
Very heavy rainfall, combined with heavy runoff from snowmelt, resulted in major flooding of all rivers and streams. When heavy rain began falling on April 4th, water levels were already close to or at flood stage. Rainfall amounts of 3 to 5 inches had fallen on the 31st of March to the 1st of April and some generally minor flooding had occurred. However, during the period from April 4th through April 8th, additional rainfall amounts of from 5 to 8 inches sent rivers and streams far in excess of flood stage. The worst flooding in 50 years was experienced in the Merrimack Valley. About one thousand people were forced from their homes when a 15-block area was flooded by the Spicket River in Lawrence. In Fitchburg, three people escaped injury when their car was swept into the Nashua River when a small bridge collapsed. About 500 residents had to leave their homes in the Berkshires on Sunday, April 5th after many roads, small bridges, and hillsides were washed away by the flooding. In Concord, a man drowned in the Assabet River on April 6th while the river was running some six feet above flood stage which was the highest level in 50 years or since 1938. In Franklin County, Ashfield suffered the greatest damage to roads in the state, with about 35 miles of washed-out dirt roads and another 35 miles of washed-out hardtop roads, totaling around \$5 million in damage. Flood control dams along all of the major rivers proved their worth and saved major disasters from occurring in metropolitan and rural areas across the region. Agricultural losses were heaviest in Hampshire County, where some 250 acres were under water, and in Franklin County where buildings and equipment were lost. In Essex County, early crops including strawberries were wiped out by the flooding. The total damage for the flooding in the affected counties was estimated at 42 million dollars including: 20-million-dollar damage to homes and businesses, 20-million-dollar damage and costs to state and local governments, and 2-million-dollar losses to agriculture. Portions of seven counties were declared federal disaster areas. Those counties included: Berkshire, Franklin, Hampshire, Worcester, Middlesex, Norfolk, and Essex. Almost forty communities within these counties declared states of emergency during the flooding. M240									
MAZ001-004-005-006-007 Western through East-Central Portion of State	28	1200EST-0300EST			0	0	5	0	Heavy Snow
An unusually late-season heavy snowfall left up to 20 to 25 inches of heavy, wet snow in northern Worcester County, with 25 inches reported at Princeton and 21 inches at Ashburnham. At Worcester Airport a total of 17 inches set a record for so late in the season, as did 11 inches at the 600-foot elevation of the Blue Hill Observatory in Milron. Hundreds of electric power lines came down under the weight of the snow and falling tree limbs, and outages affected some 50,000 to 60,000 customers throughout the area. Many of these power interruptions lasted only a few hours and others up to 24 hours. Road conditions deteriorated very rapidly during the heavy snow as snowplows had to be hurriedly pressed into service after having been put away for the season. Even the western suburbs of Boston received from 4 to 8 inches of snow. On the coast, Boston received a new record late-season snowfall of 3 inches.									
20 MICHIGAN									
6NW Bay Mills, Chippewa County	01	1345EST	0.1	10	0	0	3	0	Tornado(F0)
A witness saw a funnel touch down briefly on the south shore of Whitefish Bay during a snow squall. A mobile home was unroofed and insulation sucked from its walls. The funnel lifted immediately, but was visible aloft for several minutes									
Lincoln Park, Wayne County	27	afternoon			0	2	3	2	Thunderstorm Wind
A portion of the roof of a large building under construction was blown down. Two workers were slightly injured.									
21 MINNESOTA ————— NONE REPORTED									
22 MISSISSIPPI									
Most of State	3-5	Early AM			0	0	0	5	Unusual Cold
For three straight mornings, temperatures fell to near or below freezing. Temperatures dropped into the 20's on the 4th and 5th. These were some of the coldest readings ever observed in April. The late cold weather damaged the peach and blueberry crops.									
Humphreys County, 7 E Belzoni	10	1950CST			0	0	?	?	Thunderstorm Winds, Hail (1.00)
Numerous trees were blown down across Highway 12 seven miles east of Belzoni. Quarter-sized hail was also reported.									
Holmes County, Mileston	10	2010CST			0	0	?	?	Thunderstorm Winds
Numerous trees were blown down on Highway 49 at Mileston, or about 15 miles west of Lexington.									
Holmes County, 5 S Lexington	10	2015CST			0	0	?	?	Thunderstorm Winds, Hail (.75)
Winds estimated at 60-70mph blew down trees on Highway 17 about 5 miles south of Lexington. Dime-sized hail also occurred.									
Desoto County, Southaven	11	2250CST			0	0	?	?	Hail (1.75)
Montgomery County, Winona	13	1310CST			0	0	?	?	Hail (.75)
Washington County, Greenville	13	1612CST			0	0	?	?	Thunderstorm Winds (655)
Trees and power lines were blown down north of Greenville. Winds up to 55 knots were reported at the Greenville airport.									
Bolivar County, Scott	13	1630CST			0	0	?	?	Thunderstorm Winds
Power lines were blown down in Scott.									
Bolivar County, Shaw	13	1635CST			0	0	?	?	Thunderstorm Winds
Trees and power lines were blown down in Shaw.									
Union County, Ingomar	13	2015CST			0	0	?	?	Thunderstorm Winds
Strong winds blew down trees, knocked down power lines and destroyed a few outbuildings. One barn was damaged.									
Warren County, Vicksburg	13	2150CST			0	0	?	?	Thunderstorm Winds (651)
Warren County, Vicksburg	13	2200CST			0	0	?	?	Thunderstorm Winds (655)
Hinds County, Pochahontas	13	2300CST			0	0	?	?	Hail (1.00)
23 MISSOURI									
Camden County	08	1250CST			0	0	3	0	Dust Devil
A very strong whirlwind damaged several buildings and boat docks at Cedar Acres Resort Marina at Hurricane Deck on Lake of the Ozarks. Witnesses said a very strong gust of wind hit the area and was invisible until damage started occurring. The storm was described as tornado-like with whirling debris but no cloud visible.									
Cape Girardeau County	13	0340CST			0	0	0	0	Hail (1.00)
Hail up to one inch in diameter was reported over Cape Girardeau.									
Stone County	13	1350CST			0	0	3	0	TSTM Wind
Winds of up to around 50 mph damaged several floating boat docks and small boats at Indian Point on Table Rock Lake.									
Texas County	13	1400CST			0	0	4	0	TSTM Wind
Strong thunderstorm winds (possibly a tornado) blew a mobile home over and damaged several buildings. This damage was in and around Houston.									
Christian County	13	1405CST			0	0	0	0	Hail (0.75)
Hail of 1/2 to 3/4 inch in diameter fell at Ozark.									

STORM DATA AND UNUSUAL WEATHER PHENOMENA

APRIL 1987

PLACE	DATE	TIME - LOCAL STANDARD	LENGTH OF PATH (MILES)	WIDTH OF PATH (YARDS)	NO. OF PERSONS		ESTIMATED DAMAGE		CHARACTER OF STORM
					KILLED	INJURED	PROPERTY	CROPS	

MISSOURI

Greene County	13	1415CST			0	0	4	0	TSTM Wind
Wind broke off utility poles at about 8 to 10 feet above the ground in southeast Springfield.									
Greene County	13	1445CST			0	0	3	0	TSTM Wind
A barn was destroyed by wind 2 miles east of Lake Springfield, just southeast of Springfield.									
Webster County	13	1445CST			0	0	4	0	TSTM Wind
Wind damage to small buildings and trees was reported at Elkland.									
Dallas County	13	1500CST			0	0	4	0	TSTM Wind
Scattered wind damage occurred in south Dallas County. Mostly trees and powerlines were affected.									

24 MONTANA

MT2003	13	0600MST			0	0	3	0	High Wind
Winds of 60 mph caused damage to buildings and blew down power lines in Glacier County.									
MT2003	15	0900MST			0	0	4	0	High Wind
Wind gusts of up to 85 mph at East Glacier, 60 mph at Cut Bank, and 50 mph at Fairfield downed power lines and caused a small fire to jump a road near Fairfield and burn 150 tons of hay.									
Mineral, Sanders, and Lincoln Counties	30	1700MST			0	0	5	0	Thunderstorm Winds
Thunderstorms moved from south to north in the western areas of Mineral, Sanders and Lincoln counties. The winds, estimated at 80 to 100 mph in all of the areas, caused damage to homes, boats and mobile homes, and blew down trees and power lines which in turn blocked roads.									

25 NEBRASKA

Otoe, Nemaha and Richardson Counties	01-06	Morning-Midday			0	0	2	3	Flood
Rainfall runoff pushed the Missouri River out of banks, causing lowland flooding from around Nebraska City south through Rulo. Stages 0.5 feet over flood stage were reported at Nebraska City on the 4th, 1.5 feet over flood stage at Brownville on the 3rd, and 2 feet over flood stage at Rulo on the 4th.									
Antelope County	02-04	Midday			0	0	2	3	Flood
Snowmelt runoff pushed the Elkhorn River out of banks around Neligh with a stage 0.7 feet over flood stage recorded on the 3rd.									
Saline County	06	Morning			0	0	2	3	Flood
Turkey Creek crested 1.0 feet over flood stage at Wilber.									
Nemaha and Richardson Counties	13-17	Morning-Evening			0	0	2	3	Flood
One to three inch rains pushed the Missouri River out of banks, with crests 0.4 feet over flood stage reported at Brownville and 2.9 feet over flood stage at Rulo on the 15th.									
Richardson County	14	Morning			0	0	2	3	Flood
One to three inch rains pushed the Big Nemaha River 0.4 feet over flood stage on the 14th at Falls City.									
Saline and Gage Counties	14-16	Morning-Evening			0	0	3	4	Flood
One to three inch rains resulted in more flooding along the Big Blue River. On the 15th, stages 0.2 feet over flood stage were measured at Crete, 0.1 feet over at Beatrice, and 1.6 feet over flood stage at Barneston.									
Thayer and Jefferson Counties	14-16	Morning-Evening			0	0	3	4	Flood
Two to four inch rains caused bottomland flooding along the Little Blue River. The river crested 1.5 feet over flood stage at Alexandria on the 15th and 3.0 feet over flood stage at Fairbury.									

NEBRASKA

Saline County	14-18	Morning-Midday			0	0	3	0	Flood
One to three inch rains caused overflows on Turkey Creek at Wilber, with a stage 3.8 feet over flood stage recorded on the 18th.									
Thomas County, 3SW Halsey	24	1900CST			0	0	2	4	Lightning
Lightning started a fire which burned 600 acres of grazing land and a few pine trees just south of the Scott Lookout Tower about 3 miles southwest of Halsey.									

26 NEVADA

NV2003-005-006-007 Western, East-Central, and Southern Nevada	18	0100-2300PST			0	0	6	0	High Winds
High winds developed over western Nevada in the early morning. Gusts to 66 mph in the Washoe Valley, 63 mph in southwest Reno, and 47 mph at the Reno A.P. were reported. Minor tree damage was reported in the Reno area. By late afternoon, gusts to 77 mph were reported at the nuclear test site near DRA, 56 mph at the National Weather Service office at Las Vegas, and 62 mph at the NWS office at Ely. In the Las Vegas area, power poles and billboards were downed and 20,000 people were without power by 1700PST. In the Ely and Eureka areas, minor roof damage occurred. In the Tonopah area, no measurements were made of wind speeds, but the roof was blown off of the high school, numerous structures were damaged around the town, and a few vehicles were overturned. Dust raised by the wind reduced visibility to near zero at times across western Nevada, hampering travel.									
Washoe County	28	1600PST			0	0	0	0	TSTM Wind (54)
Winds of up to 54 knots occurred at the Reno A.P. No reports of damage were received.									
Washoe County	30	0138PST			0	0	0	0	Funnel Cloud
A resident of Lemmon Valley, 10 miles northwest of Reno, was awakened by a loud roar. The person saw a funnel and said that it did not touch down. A second person confirmed the loud roar, but did not see the funnel.									
White Pine County	30	early morning			0	0	4	0	Lightning
Lightning from an early morning thunderstorm struck the National Weather Service office in Ely. Most communications equipment was rendered inoperative, as was the ARTS equipment. Any other electronic devices turned on at the time sustained at least minor damage.									
Elko County	30	1300PST			0	0	3	0	TSTM Wind (50)
Thunderstorm wind gusts in Jackpot blew over two telephone poles. The winds were estimated. They were accompanied by small hail and brief heavy rain.									

27 NEW HAMPSHIRE — NO REPORT RECEIVED

28 NEW JERSEY, Northern

Passaic, Bergen, Essex, Morris, Middlesex, Hunterdon, Somerset, Union and Hudson Counties	04-05	Afternoon-Night			0	0	?	?	Flood
A slow-moving storm dumped heavy rain across Northern New Jersey starting Friday night, April 3rd and finally ending late Saturday afternoon, April 4th. Nearly all small rivers and streams across Northern New Jersey experienced some flooding. The Passaic and Raritan basins had the most serious flooding problems. Hundreds of people were evacuated by the National Guard and State Police. River and stream flooding was at its peak early Sunday morning. By late that night most were back within their banks.									

STORM DATA AND UNUSUAL WEATHER PHENOMENA

APRIL 1987

PLACE	DATE	TIME - LOCAL STANDARD	LENGTH OF PATH (MILES)	WIDTH OF PATH (YARDS)	NO. OF PERSONS		ESTIMATED DAMAGE		CHARACTER OF STORM
					KILLED	INJURED	PROPERTY	CROPS	
28 NEW JERSEY, Southern									
Mercer County, Assunpink Creek	04	1030 EST			0	0	?	0	Flooding
Rain fell from before midnight until early afternoon on the 4th, with the heaviest rain falling from before daybreak through the morning hours. Rainfall amounts reached two to three and one-half inches. This resulted in moderate flooding along the Assunpink Creek which crested in Trenton at around 10:30 AM EST.									
Atlantic County, Hamonton	28	2138 EST			0	0	?	0	Hail (0.75)
Thunderstorms moving across the county produced dime size hail and wind gusts to 40 MPH. Enough hail accumulated at Hamonton that some was still on the ground at sunrise the next morning. Small hail was reported at Egg Harbor City and pea size hail at Northfield, both in Atlantic County.									
29 NEW MEXICO									
Bernalillo County NM2008	12	1330MST	0.8	50.	0	0	4	0	Tornado (F0)
A tornado touched down 15 miles south of Albuquerque at Bosque Farms, downing trees, damaging shingles, and bending a basketball backboard on a metal pipe so that the top was five feet from the ground.									
30 NEW YORK, Coastal									
Rockland and Westchester Counties	04-	Afternoon			0	0	?	0	Flood
05 Night									
A slow-moving storm dumped heavy rain across Rockland and Westchester counties of southeastern New York. The rain started Friday night, April 3rd and ended late Saturday afternoon, April 4th. Nearly all small rivers and streams in Rockland and Westchester counties experienced some flooding. The flooding in several low areas forced scattered closings along the Bronx River, Saw Mill River and Hutchinson River Parkways in Westchester County. Only a few evacuations of homes were necessary.									
NY2015-016-017 Metropolitan New York and Long Island	04	Afternoon			0	0	?	0	High Wind
Strong winds associated with a slow-moving storm downed or damaged 60 trees in the New York City metropolitan area. Winds at LaGuardia Airport gusted to 63 MPH. Several trees were also downed on Long Island. Some of these trees fell on power lines and 1000 customers in Suffolk and 4500 customers in Nassau counties lost power.									
30 NEW YORK, Central									
NY2007-008-018	02	UNK			0	2	4	0	Snow
A late season snow storm left 4-6 inches of snow across most of the Adirondack area. Two (2) auto accidents were reported due to the snow; also, reports of area power lines being brought down were received.									
Schoharie County	04	0600EST			11	72	8	7	Flood
Greene "									
Montgomery "									
Ulster "									
Delaware "									
Orange "									
Dutchess "									
Putnam "									
Broome "									
Cortland "									
Chenango "									
Otsego "									
Onieda "									
Herkimer "									
Fulton "									
Saratoga "									
Albany "									
Schenectady "									
Rensselaer "									
Washington "									
Warren "									
Essex "									
Clinton "									
Sullivan "									
NEW YORK, Central									
Schoharie County	04	0600EST			0	10	8	7	Flash Flood
Greene "									
Montgomery "									
Ulster "									
Delaware "									
Orange "									
Dutchess "									
Putnam "									
Broome "									
Cortland "									
Chenango "									
Otsego "									
Onieda "									
Herkimer "									
Fulton "									
Saratoga "									
Albany "									
Schenectady "									
Rensselaer "									
Washington "									
Warren "									
Essex "									
Clinton "									
Sullivan "									
Near record flooding was reported in the Schoharie and Catskill areas of Eastern New York. Minor flooding was also reported in other portions of the area. Ten deaths were recorded due to a bridge collapse. The bridge carried the New York State Thruway over the Schoharie Creek. One additional death occurred to a young man as he was canoeing on a white water stream in the Catskills.									
More than 3000 persons were evacuated in Delaware County alone, due to flooding. Rainfall amounts of over ten inches were recorded at both Tannersville and Slide Mountain.									
A Presidential declaration was approved for Ulster, Greene, Schoharie, Montgomery, and Delaware Counties of New York. Listed damages in these counties include destruction of 50 homes, and damage to 982 others. Extensive damage to over 90 businesses, and damage to numerous roads and bridges in the region were incurred.									
In addition, two (2) sewage treatment plants and two (2) schools were knocked out of operation. Considerable stream bank erosion is evident in Eastern New York. Fourteen head of cows were also killed in the flood event along the Schoharie Creek.									
A train derailment was also reported in Callicoon, Sullivan County, and resulted in a hazardous materials spill. Flooding also resulted in railroad track washouts in the town of Shandaken, Ulster County.									
									M-29-0 (kayacking) Town of Gardiner
									M-68-V (bridge collapse) Canajoharie
									M-59-V " " "
									M-40-V " " "
									M-47-V " " "
									F-22-V " " "
									F-46-V " " "
									M-39-V " " "
									F-70-V " " "
									M-61-V " " "
									M-39-V " " "
Montgomery County, Town of Mohawk	05	UNK			0	0	4	0	Mudslide
Rensselaer County, City of Troy	07	1100EST			0	0	5	0	Mudslide
Heavy rains during the past weekend had saturated the ground in Troy. This fact caused a steep slope to slide down into a private home.									
Herkimer County, Montgomery	12	0200EST			0	0	4	0	Flash Flood
The ground, saturated from last week's heavy rain, produced local flash flooding. Hardest hit were the towns of Oriskany Falls, Whitesboro, and western portions of Montgomery County. Ten homes were evacuated and three (3) roads closed.									
Schoharie County	12	PH			0	0	4	0	Flood
Minor flooding occurred along the Schoharie Creek for the second time in a week. Flooding was minor, but ten roads were closed.									

STORM DATA AND UNUSUAL WEATHER PHENOMENA

APRIL 1987

PLACE	DATE	TIME - LOCAL STANDARD	LENGTH OF PATH (MILES)	WIDTH OF PATH (YARDS)	NO. OF PERSONS		ESTIMATED DAMAGE		CHARACTER OF STORM
					KILLED	INJURED	PROPERTY	CROPS	
30 NEW YORK, Western									
NY2002-021 Orleans, Cayuga, Wayne, and Monroe Counties	04	afternoon			0	0	4	0	High Wind
									High winds toppled trees and severed power lines. Many communities had power outages. Along Lake Ontario, strong winds caused lake water to flood some shoreline properties.
NY2001-021-022 Erie, Niagara, and Cattaraugus Counties	04	evening			0	0	4	0	High Wind
									High winds gusting to 59 mph felled trees and cut power lines. A fallen tree damaged a car in Lockport. In Newfane, another felled tree smashed a car occupied by a couple, trapping them in the car.
NY2002 Monroe County	06				0	0	4	0	Rain
									Heavy rains from the 3rd through the 5th caused the Oarka Creek in western Monroe County to rise above flood stage, causing some agricultural flooding.
31 NORTH CAROLINA									
NCZ-010-011-012 Central and Southern Mountains	03	0500EST			0	?	5	0	Heavy Snow
NCZ-009 Northern Mountains	03	0900EST			0	?	5	0	Heavy Snow
NCZ-009	04	1800EST			0	?	5	0	Blizzard
									A spring storm became the biggest snow producer in North Carolina of the season. Wet, heavy snow began to fall early in the morning on the 3rd, and accumulated to as much as 2 feet in some areas. This snowfall left travellers on I-40 between Asheville and the Tennessee line stranded for more than 24 hours. Many small buildings collapsed from the weight of the snow. However, cold air swept into the mountains Saturday, and the storm continued. Blizzard conditions were reported in the northern mountains, as another 4 to 6 inches of snow fell during this part of the storm, and winds were 30 to 45 mph. Some snow depths after the storm had ended were: AVL 12 inches, Boone 18 inches, Spruce Pine 21 inches, Grandfather Mountain 25 inches, Mount Mitchell (possibly a single storm record for North Carolina) 35 inches.
Guilford Co. NE	12	1700EST			0	0	3	?	Hail (1.75)
Wake Co. N. Raleigh	12	1815EST			0	0	?	0	TSTM Winds (50)
Wake Co. Cary	12	1830EST			0	0	3	0	TSTM Winds
Wake Co. S. Raleigh, Garner	12	1845EST			0	0	5	0	TSTM Winds
Greene Co. Walstonburg	12	1930EST			0	?	4	0	TSTM Winds
									Central North Carolina's first severe storms of the season developed late in the afternoon. The first storm produced large hail in a small area, which damaged some cars and roofs of homes. The remainder of the storms produced strong winds as they accelerated and moved east. In Wake County, awnings were blown down, and shingles were blown off a roof. Some power lines were also taken down, and some trees were blown onto an apartment complex. At Walstonburg a man was slightly injured when his mobile home was rolled over by winds from a decaying line of severe storms.
Cherokee Co. Andrews	15	0145EST			0	0	?	0	TSTM Winds
Clay Co. Warren	15	0315EST			0	0	?	0	Hail (1.50)
Union Co. near Marshville	15	0521EST			0	0	?	?	Hail (.88)
Caldwell Co. near Collettsville	15	1000EST			0	0	5	0	TSTM Winds
Mecklenburg Co. Nrn.	15	1012EST			0	0	5	0	TSTM Winds
Surry Co. Mt. Airy	15	1030EST			0	0	?	0	TSTM Winds
									Unusual early-morning severe thunderstorms moved from the mountains, across the foothills, and into the western portion of the piedmont by late morning. Large hail fell, and trees and power lines were blown down. The most serious damage was reported in Caldwell County where a mobile home was destroyed by high winds, and in Mecklenburg County where damage to a shopping area occurred.
Brunswick Co. Ash	15	1310EST			0	0	4	0	TSTM Winds
Gaston Co. Mt. Holly	15	1358EST			0	0	?	?	Hail (.75)
Mecklenburg Co., near Cornelius	15	1406EST			0	0	?	?	Hail (.75)
New Hanover Co. 2 N Wilmington	15	1410EST			0	0	4	0	TSTM Winds
Mecklenburg Co. Hwy. Beatties Ford Rd.	15	1435EST			0	0	?	0	Hail (.75)
Mecklenburg Co. Huntersville	15	1503EST			0	0	?	0	Hail (1.00)
Cabarrus Co. Kannapolis	15	1530EST			0	0	3	0	TSTM Winds
Mecklenburg Co. Charlotte suburbs	15	1600EST			0	0	?	0	Hail (1.00)
Anson Co. Wadesboro	15	1603EST			0	0	?	?	Hail (.88)
NORTH CAROLINA									
Davie Co. W of Advance	15	1615EST			0	0	?	?	Hail (1.00)
Mecklenburg Co. Nrn.	15	1619EST			0	0	5	0	Flash Flood
Mecklenburg Co. Huntersville	15	1634EST			0	0	3	0	Hail (1.75)
Rowan Co. China Grove	15	1640EST			0	0	5	?	Hail (2.50)
Anson Co. Wadesboro	15	1643EST			0	0	3	0	Hail (.88). TSTM Winds
Mecklenburg Co. Charlotte suburbs	15	1651EST			0	0	?	0	Hail (1.00)
Anson Co. NW of Wadesboro	15	1703EST			0	0	?	?	Hail (.88)
Rowan Co. Cleveland	15	1710EST			0	0	4	?	Hail (1.75)
Forsyth Co. Clemmons	15	1738EST			0	0	2	0	TSTM Winds
Carteret Co. Stacy	15	1745EST			0	0	?	0	Hail (.75)
Davidson. W of Lexington	15	1750EST			0	0	4	?	Hail (1.75)
Rowan Co. China Grove Area	15	1820EST			0	0	5	?	Flash Flood
Guilford Co. Greensboro	15	1830EST			0	0	4	0	TSTM Winds
Davidson Co. Thomasville	15	1845EST			0	0	?	?	Hail (1.75)
Davidson Co. Welcome	15	1900EST			0	0	4	?	Flash Flood
Davidson Co. E of Lexington	15	1950EST			0	0	4	?	Hail (1.75)
Guilford Co. Greensboro	15	2100EST			0	0	?	?	Flash Flood
Alamance Co. Beaver Creek	15	2200EST			0	0	?	?	Flood
									Severe thunderstorms redeveloped over the foothills and western piedmont. These storms produced an abundance of hail - some areas of Rowan and Davidson counties reported hail lasting from 45 minutes to up to 2 hours (off and on) in one location. In areas where the largest hail fell, sliding was torn off houses, roofs were destroyed, and cars were severely damaged. The hail accumulated up to 2 feet in drifts, and to several inches on flat ground. A thick fog formed after the hail ended. 5 or 6 of the most severe storms developed in the early evening hours from northern Mecklenburg County along a line to the Winston-Salem area. These storms "trained", and besides producing the hail mentioned above, produced near-record rains, causing substantial flash flooding that evening, and more general flooding overnight and into the next day. Many places reported 4 to 5 inches of rain, and a couple had around 8 inches. Evacuations were required during the evening in Rowan and Alamance counties. Some cars were crushed by fallen trees in Greensboro. There were a few reports of wind damage, but other than trees and power lines, and some sign damage, the most severe damage was from the hail and flooding. A few severe storms also occurred in southeastern North Carolina. 2/3 of the roof of a house was torn off by winds at Ash, an empty tractor-trailer rig was overturned and trees were uprooted by winds just north of Wilmington, and dime size hail was reported at Stacy.
Randolph Co. Cedar Falls	16	0100EST			0	0	4	?	Flood
Watauga County	16	0600EST			0	0	4	0	Flood
Wake Co. Wendell	16	0900EST			0	0	0	0	Flood
Franklin Co. Louisburg	16	1000EST			0	0	3	0	Flood
Caswell Co. Milton	16	1130EST			0	0	4	?	Flood
Rockingham Co. Eden	16	1148EST			0	0	?	?	Flood
									Flooding continued across the piedmont from overnight rains and continuing thunderstorms. Most of this flooding was of a more general nature. A few bridges were washed out, and some families were evacuated in the northwest piedmont. Many creeks in Watauga County were out of their banks. In the east, major street flooding was reported in Wendell, and schools were closed early because of roadway flooding from overflowing creeks in Franklin County.
Edgecombe Co. 10 W Tarboro	16	1235EST			0	0	?	?	Hail (1.75)
Union Co. Western	16	1539EST			0	0	?	?	Hail (1.75)
Mecklenburg Co. Pineville	16	1551EST			0	0	?	?	Hail (1.75)
									Only a few reports of large hail were received from isolated severe thunderstorms. There were a number of reports of smaller hail covering the ground across the foothills and western piedmont.
Caldwell County. Lenoir	23	2230EST			0	0	3	0	Flash Flood
Surry County	24	0100EST			0	0	?	0	Flood
									Thunderstorms with heavy rain caused flooding in parts of western North Carolina. Hoods Creek overflowed, and caused water to rise to door level of some homes and trailers in Lenoir. A few creeks overflowed in Surry County.

STORM DATA AND UNUSUAL WEATHER PHENOMENA

APRIL 1987

PLACE	DATE	TIME - LOCAL STANDARD	LENGTH OF PATH (MILES)	WIDTH OF PATH (YARDS)	NO. OF PERSONS		ESTIMATED DAMAGE		CHARACTER OF STORM
					KILLED	INURED	PROPERTY	CROPS	
NORTH CAROLINA									
Cabarrus Co., Kannapolis	24	1200EST			0	0	?	?	Hail (1.00)
Rowan Co., Salisbury	24	1212EST			0	0	?	?	Hail (.75)
Lincoln County	24	1300EST			0	0	?	?	Hail (1.00)
Bladen Co., Butters	24	1300EST			0	0	?	?	Hail (.75)
Stokes Co., King	24	1400EST			0	0	?	?	Flash Flood
Sampson Co., Clinton	24	1415EST			0	0	?	?	Hail (.75)
Bladen Co., Elizabethtown	24	1418EST			0	0	?	?	Hail (1.00)
Duplin Co., Calypso	24	1505EST			0	0	4	?	TSTM Winds, Hail (1.00)
Wayne Co., Mt. Olive	24	1515EST			0	0	5	?	TSTM Winds
Wayne Co., 3 N Mt. Olive	24	1530EST			0	0	?	?	TSTM Winds
Rockingham Co., Wrrt.	24	1545EST			0	0	?	?	Flash Flood
Lenoir Co., La Grange	24	1615EST			0	0	0	0	Hail (.75)
Halifax Co., Weidon	24	1657EST			0	0	0	0	Hail (1.00)
Halifax Co., near Scotland Neck	24	1700EST			0	0	?	?	Hail (.75)
Northampton Co., near Jackson	24	1720EST			0	0	?	?	TSTM Winds
Stokes Co., King	25	0300EST			0	0	3	?	Flood
									Thunderstorms dumped heavy rain on saturated ground in the foothills and western piedmont sections of the state. Many roads were closed because creeks overflowed, and some evacuations were required in Stokes County. However, the flooding was not nearly as severe as that on the 15th and 16th of the month. At some locations the storms became severe with large hail, and there were a few reports of wind damage. The most damage, however, occurred with a storm that moved from Duplin County into southern Wayne County. At Calypso, large hail was reported, and part of the roof of a plywood manufacturing plant was removed. As the storm moved into Wayne County, it tore down numerous trees in Mount Olive. Some of the trees fell onto cars and buildings, causing considerable damage. There were a few reports of large hail in the Northern Coastal Plain.
NC2001, Outer Banks	25-	All			0	0	6	0	Coastal Storm
									A low pressure system offshore, combined with high pressure over Canada, caused considerable beach erosion and overwash along the Outer Banks. The most serious problems were in the South Nags Head area where 3 beachfront cottages were lost, and an additional 10 to 15 were condemned due to septic tanks being washed away. On Hatteras Island, the traditional areas of overwash suffered significant dune erosion. Some travellers required rescue, and traffic was restricted for several days. Sound side flooding reached about 1 foot on the south part of Hatteras Island.
Brunswick Co., Bolivia	25	1400EST			0	0	?	?	Hail (1.00)
Brunswick Co., Oak Island CG Stn.	25	1420EST			0	0	?	?	Hail (.75)
									Large hail from isolated severe storms was reported along coastal North Carolina.
Cumberland County	30	1750EST			0	0	?	0	TSTM Winds
									An isolated severe storm blew down numerous trees.
32 NORTH DAKOTA									
ND2013-015-016 Eastern North Dakota	04-06				0	0	?	?	Floods
									Heavy runoff upstream caused the Sheyenne River to overflow its banks in Griggs County. The flooding washed out roads and bridges. A dozen farmsteads were flooded, and farm families were forced to travel by boat or tractor. Livestock had to be moved to higher ground.
									Snowmelt and ice jams, coupled with already high river levels, caused flooding throughout Walsh County. The Park River and Forest River both overflowed their banks. Floodwater inundated a park, golf course and trailer court in the town of Grafton. Several families were evacuated. Bridges and secondary roads in the Grafton-Minto area were flooded, stranding some motorists.
									In Cavalier County, snowmelt combined with water-filled ditches to flood many roads in the county.
McHenry County, BSW Granville	18	2015CST			0	0	4	?	TSTM Wind
									Brief strong winds collapsed a barn, broke a flagpole, picked up and transported a water tank and an empty 300-gallon barrel, and damaged a machine shed.
33 OHIO									
OHZ002-003-004-006-007-008-009-011	03	Morning-04 Evening			0	0	?	0	Heavy Snow
									All of Ohio except the Northwest and West-Central sections
									A late-season snow storm struck. The snow began in the south-central counties during the morning of the 3rd. The snow spread north and intensified during the night of the 3rd and 4th. By about 0500 EST on the 4th, most of central and eastern Ohio had received 4 to 6 inches. Snowfall continued through most of the 4th, and even moved into the southwest counties which received up to 8 inches by 1900 EST. The snow finally tapered off on the evening of the 4th, by which time most of the east half of the state had received 10 inches, with isolated amounts as high as 20 inches. The snow was accompanied by winds that sometimes gusted up to 50 mph. The snow and wind acted together to cause massive tree and power line damage, with approximately 125,000 homes losing electricity. Several buildings collapsed under the weight of the snow and numerous travelers were stranded.
OHZ002 West Lakeshore of Ohio	04	Afternoon-05 Morning			0	0	5	0	High Waves/ Flooding
									Strong winds pushed water from Lake Erie inland, damaging several structures.
OHZ002 Erie County	05	1900 EST			0	0	5	0	Flood
									The Huron River flooded at Milan. The river crested at a stage of 17 feet (flood stage 14 feet) at 0700 EST on the 6th, which caused only minor damage.
OHZ004 Trumbull County	06	0400 EST			0	0	2	0	Flood
									The Mahoning River flooded at Leavittsburg. The river crested at a stage of 11.8 feet at 1900 EST on the 6th (flood stage 10 feet). There was only minor damage.
OHZ007 Guernsey County	08	0400 EST			0	0	0	0	Flood
									Willis Creek flooded at Cambridge. The creek crested at a stage of 15 feet (flood stage 13 feet) at 1900 EST on the 9th. Only undeveloped land was flooded.
OHZ009 Pike County	08	0500 EST			0	0	0	0	Flood
									The Scioto River flooded at Piketon. The river crested at a stage of 19.8 feet (flood stage 16 feet) at 1400 EST on the 8th, which affected only agricultural land.
OHZ006 Hocking County	08	0700 EST			0	0	0	0	Flood
									The Hocking River flooded at Enterprise. The stream crested at a stage of 12.1 feet (flood stage 12 feet) at 0800 EST on the 8th, which caused no damage.
Summit County	27	1640 EST			0	0	4	0	Thunderstorm Wind
									A thunderstorm downed numerous trees in the southern part of the county.
Wayne County	27	1640 EST			0	0	4	0	Thunderstorm Wind
									A thunderstorm felled several trees in the Smithville area.
Tuscarawas County	27	1650 EST			0	0	4	0	Thunderstorm Wind
									A thunderstorm downed trees at scattered locations in the county.
Harrison County	27	1700 EST			0	0	4	0	Thunderstorm Wind
									A thunderstorm downed several trees and demolished a farm outbuilding. The worst damage was in the northern part of the county.
Stark County	27	1715 EST			0	0	4	0	Thunderstorm Wind
									A thunderstorm deroofed a nursing home near Alliance and knocked over several trees in North Canton.

STORM DATA AND UNUSUAL WEATHER PHENOMENA

APRIL 1987

PLACE	DATE	TIME - LOCAL STANDARD	LENGTH OF PATH (MILES)	WIDTH OF PATH (YARDS)	NO. OF PERSONS		ESTIMATED ¹ DAMAGE		CHARACTER OF STORM	
					KILLED	INJURED	PROPERTY	CROPS		
OHIO										
Hocking County	27	1729 EST			0	1	4	0	Thunderstorm Wind	A thunderstorm in Laurelville uprooted several trees and damaged two buildings. A man suffered minor injuries when struck by a piece of falling roofing.
Columbiana County	27	1740 EST			0	0	4	0	Thunderstorm Wind	A thunderstorm downed numerous trees around Salem.
Guernsey County	27	1740 EST			0	0	4	0	Thunderstorm Wind	A thunderstorm blew the roof off a school in Buffalo.
Belmont County	27	1755 EST			0	2	4	0	Thunderstorm Wind	A thunderstorm downed trees at many locations, especially in the northern part of the county. Two people were injured when a tree fell on a trailer in Morrisville.
Washington County	27	1845 EST			0	0	4	0	Thunderstorm Wind	A thunderstorm knocked over several trees in the Marietta area.
Lawrence County	27	1925 EST			0	0	4	0	Thunderstorm Wind	A storm felled trees at several locations. The most significant damage was around Ironton.
34 OKLAHOMA										
Kay County, 5 mi. E Ponca City	12	2128CST			0	0	?	?	Hail (1.50)	
Kay County, Washunga	12	2140CST			0	0	?	?	Hail (0.75)	
Kingfisher County, Loyal	12	2140CST			0	0	?	?	Hail (1.00)	
Garfield County, Vance AFB	12	2212CST			0	0	?	?	Hail (0.75)	
Kingfisher County, Hennessey	12	2217CST			0	0	?	?	Hail (1.00)	
Garfield County, 5 mi. WNW Garber	12	2230CST			0	0	?	?	Hail (0.75)	
Noble County, 5 mi. WSW Perry	12	2235CST			1	0	3	?	Tstm. Wind	
Kay County, Tonkawa	12	2250CST			0	0	?	?	Hail (0.75), Tstm. Wind	
Kay County, Ponca City	12	2304CST			0	0	4	?	Tstm. Wind, Hail (1.25)	
Noble County, Mariand	12	2305CST			0	0	?	?	Tstm. Wind	
Kay County, 1 mi. W Kaw City	12	2340CST			0	0	4	?	Tstm. Wind	
Osage County, 8 mi. W Burbank	12	2340CST			0	0	3	?	Tstm. Wind	
										Thunderstorms produced hail between 3/4 and 1 1/2 inches and very strong winds across sections of the north-central. Strong winds destroyed a mobile home just west of Perry. A man in the mobile home was killed. Strong winds also blew down 10 power poles near Tonkawa. These winds were clocked by a radio station in Ponca City at 87 mph. Several mobile homes were damaged or destroyed across Kay County from the strong winds. Several outbuildings were destroyed and roof damage occurred in western Osage County. TSTM WIND #64M
Washington County, 8 mi. N Dewey	13	0032CST			0	0	?	?	Hail (1.75)	
Atoka County, Atoka	13	0305CST			0	0	?	?	Hail (0.75)	
McCurtain County, near Idabel	13	1040CST			0	0	3	?	Tstm. Wind	
McCurtain County, Broken Bow	13	1100CST			0	0	3	?	Tstm. Wind	
Sequoyah County, 2 E Sallisaw	13	1400CST			0	0	3	?	Tstm. Wind	
										Thunderstorms produced hail and strong winds over portions of the southeast and east. Numerous trees were blown down across southern McCurtain County and a mobile home was overturned near Broken Bow. Trees and fences were blown down and a mobile home was damaged just east of Sallisaw.
OKLAHOMA										
Grady County, 3 mi. S Bradley	20	1630CST			0	0	?	?	Hail (0.75)	
McClain County, 7 mi. S Criner	20	1645CST			0	0	?	?	Hail (0.75)	
Carter County, 6 mi. NW Springer	20	1910CST			0	0	?	?	Hail (0.75)	
Murray County, 6 mi. SW Davis	20	1915CST			0	0	?	?	Hail (0.88)	
Oklahoma County, Midwest City to Choctaw	20	2037CST			0	0	?	?	Hail (0.88)	
										Thunderstorms produced dime to nickle size hail across portions of the south-central and central sections of the state.
35 OREGON										
ID2001 Malheur County, Ontario	08	1630MST			0	0	3	0	High Wind	Strong winds caused power lines to short out at an Idaho Power substation, producing a power outage to 785 customers.
OR2008	17	1300PST			0	0	4	0	High Wind	A cold front moved through Jefferson and Crook counties on the east slopes of the Cascades. Strong gusty winds of between 50 and 60 mph were reported in Madras and Prineville. The wind destroyed one lumber company storage building and tore a metal roof off another woods product building, causing electrical fires.
ID2001 Malheur County, Vale	17	evening			0	0	3	0	Thunderstorm Wind	A mobile home roof was ripped off and thrown into a neighboring field by thunderstorm winds.
OR2004	30	1500PST			0	0	?	0	High Wind	A squall moved through the central Willamette Valley area of Lebanon and Lacombe. Twister-like winds ripped through a tree nursery, tearing apart a metal camper and driving metal strips through trees and buildings. No wind measurements were available in the area.
36 PENNSYLVANIA, Eastern										
Bucks County, Neshaminy Creek	4	1330 EST			0	0	1	0	Flooding	Rain fell from just before midnight until around noon on the 4th, with the heaviest rain after daybreak on the 4th. Rainfall amounts were generally one and one-quarter inch to two inches. Minor flooding occurred along the Neshaminy Creek which crested at Langhorne about 4:30 PM EST on the 4th.
Lycoming County, 3 NW Williamsport	26	1245 EST			0	0	3	0	Dust Devil	An apparent dust devil went through Old Lycoming Township, approximately 3 miles northwest of center city Williamsport, between 1:30 PM and 2:00 PM EDT April 26. Plastic that covered a greenhouse was ripped, but the 2-by-4s that supported the greenhouse were not damaged. A pickup truck camper was damaged when it was lifted off its blocks and moved 15 feet. Other small debris was scattered for approximately 300 feet, and hit a power line. The wind speed was estimated at no more than 45 mph.
36 PENNSYLVANIA, Western										
PA2003-004-005-006-013-014-015	04	morning			0	0	0	0	Heavy Snow	Six to eight inches of snow fell as low pressure moved slowly up the East Coast. Isolated amounts of up to twelve inches were reported in the central mountains.
Cambria County, Johnstown and 19 E Johnstown	04	1417EST			0	0	?	0	Flood	Streams and creeks went over their banks due to rain runoff and snowmelt near Sonon's Run near Johnstown, and at Portage, 19 miles east of Johnstown. Also, basement and poor-drainage flooding were common.

STORM DATA AND UNUSUAL WEATHER PHENOMENA

APRIL 1987

PLACE	DATE	TIME - LOCAL STANDARD	LENGTH OF PATH (MILES)	WIDTH OF PATH (YARDS)	NO. OF PERSONS		ESTIMATED DAMAGE		CHARACTER OF STORM
					KILLED	INJURED	PROPERTY	CROPS	
PENNSYLVANIA, Western									
Clearfield County, Clearfield	12	1600EST			0	0	3	0	Lightning
									Lightning hit a tree and traveled to a shed, destroying it. The charge then traveled to a house where it did extensive damage.
Beaver County, Monaca (3 E Beaver)	27	1755EST			0	0	?	0	Thunderstorm Wind
									Large trees and power lines were downed at Monaca.
Beaver County, Rochester (2 E Beaver)	27	1850EST			0	0	?	0	Thunderstorm Wind
									A forty-foot-high radio tower was downed by thunderstorm wind in Rochester.
Armstrong County	27	1850EST			0	0	?	0	Thunderstorm Wind
									Trees and wires were downed throughout the county.
Butler County	27	1850EST			0	0	?	0	Thunderstorm Wind
									Large trees and wires were downed in the southern part of the county.
Allegheny County, 5 N Pittsburgh and 7 SW Pittsburgh	27	1900EST			0	0	?	0	Thunderstorm Wind
									Trees and power lines were downed in Avalon and Etna (5 N Pittsburgh), and at Bridgeville (7 SW Pittsburgh).
Westmoreland County, 22 NW Greensburg and 4 NE Greensburg	27	1915EST			0	0	?	0	Thunderstorm Wind
									Trees were downed at Lower Burrell (22 NW Greensburg) and at Hannastown (4 NE Greensburg).
37 RHODE ISLAND									
RIZALL Statewide	04-08				0	0	4	?	Heavy Rain and Flooding
									Very heavy rainfall, totaling as much as 7 inches in a week with up to 4 to 5 inches of that total falling during this period, sent rivers and streams to bankfull and over their banks in scattered areas in the northern portion of the state. Generally minor flooding problems were reported. The Blackstone River reached a level of two to three feet above flood stage at Woonsocket. Flooding of parking lots, basements, and some roads was common.
RIZ001 Northern Portion	28	afternoon-evening			0	0	4	0	Heavy Snow
									An unusual late-season snowstorm deposited up to one foot of very wet snow in the northwest corner of the state, especially at high elevations. Scattered power outages were reported and roads became impassable for a while before plows could be brought back into service. Snowfall amounts set records for so late in the season in much of the affected area. Snowfall totals for this storm dropped off sharply to the south and toward the lower elevations.
38 SOUTH CAROLINA									
SCZ001-002-003-004-005-006-007 All of South Carolina except the Immediate Coast	01	0000-0800EST			0	0	0	5	Freeze
									Frost and temperatures below freezing over most of inland South Carolina damaged fruits, vegetables, flowers, and emerging row crops. Brisk winds greatly reduced frost damage to fruit.
SCZ001 Northwest South Carolina	03	0000-1200EST			0	0	4	0	Heavy Snow
									Snow of 1 to 3 inches in depth in the mountains caused minor damage to trees and delayed traffic. Two to three inches of snow fell at the fish hatchery near Walhalla.
Beaufort County	03	1400EST			0	0	3	0	Wind
									Strong winds associated with a thunderstorm cut a short path through tree tops, broke off a 4-foot diameter oak, blew down several large and farm shelters, tore off screens and shingles, and moved a building 8 inches off its foundation. Damage was confined to a small area at Shelton.
Marion County	03	1500EST			0	0	3	0	Wind
									Winds damaged Dixon's Warehouse on US 76 near Mullins.
Clarendon County	03	1500EST			0	0	4	0	Wind
									Near Bloomfield, heavy winds during a thunderstorm disrupted electrical power and blew shingles off of several buildings.
SOUTH CAROLINA									
Cherokee County	08	1600EST			0	0	3	0	Wind
									High winds damaged the roof of the Gaffney Feed and Seed building in Gaffney.
Statewide	15	day							Showers and Thunderstorms
									A low pressure area developed in northwestern South Carolina in connection with a slow-moving cold front on April 15th. Unstable weather along and ahead of the front moved across the state, causing numerous showers and thunderstorms. Individual reports of hail and high winds associated with the storms follow:
Sumter County	15	1027EST			0	0	2	2	Hail (small)
									Small hail was reported near Sumter.
Beaufort County	15	1027EST			0	0	2	2	Hail (0.50)
									Hail 1/2 inch in diameter was reported in uptown Beaufort.
Richland County	15	1030EST			0	0	3	1	Hail (small)
									Small hail was reported in eastern Columbia.
Dorchester County	15	1042EST			0	0	2	2	Hail (small)
Horry County	15	1230EST			0	0	5	0	Wind
	15	1230EST			0	0	5	3	Hail (0.75)
	15	1300EST			0	0	4	0	Urban Flood
									Hail caused extensive damage to roofs and awnings over a several block area of Cherry Grove. Downburst winds caused highly localized damage over a six block area from North 47 to 61 Streets in Cherry Grove. Roofs on several buildings were heavily damaged by wind; a dumpster was picked up and deposited in a nearby street. Heavy rains, reported unofficially at more than 7 inches between 10 a.m. and 1 p.m., flooded several sections of Ocean Boulevard as well as a number of homes in North Myrtle Beach. Water was up to seat level of cars.
Darlington County	15	1530EST			0	0	4	4	Hail (1.25)
									Hail 1/2 inch in diameter was reported near Lamar; 1.25 inch hail fell at Kellytown.
Darlington County	15	1540EST			0	0	4	0	Wind
	15	1540EST			0	0	3	3	Hail (1.00)
									Large tree limbs were downed at Lydia.
Cherokee County	16	1200EST			0	0	2	2	Hail (small)
									Small hail was reported in central Cherokee County.
Richland County	16	1315EST			0	0	2	2	Hail (small)
									Small hail was reported in southern Richland County.
York County	16	1600EST			0	0	4	3	Hail (1.75)
									Golfball size hail fell near Fort Mill.
Lexington County	16	1700EST			0	0	4	3	Hail (0.50)
									Hail 1/2 inch in diameter covered the ground at Swansea.
Berkeley County	16	1740EST			0	0	3	3	Hail (0.75)
									Hail 3/4 inch in diameter fell at Cross on the west side of Lake Moultrie.
Anderson County	23	1825EST			0	0	5	4	Hail (1.75)
	23	1825EST			0	0	5	3	Wind
									At 1825EST, the FAA Flight Service at Anderson Airport reported hail with wind gusts to 58 knots. The hail ended at 1853EST. The high winds destroyed two planes and hail damaged about 50 other planes. Hail up to golfball size accompanied the storm. More than 300 Duke Power customers lost electrical power mostly from tree and limb breakage. Poothills Nursery reported that hail piled up to more than a 12-inch depth between greenhouses. Twenty-three greenhouses were heavily damaged by the hail and wind. Total damage was estimated at 1/3 million dollars.
Laurens County	23	2025EST			0	0	4	4	Hail (0.50)
									A storm just north of Laurens was accompanied by hail of 1/2 inch in diameter.

STORM DATA AND UNUSUAL WEATHER PHENOMENA

APRIL 1987

PLACE	DATE	TIME - LOCAL STANDARD	LENGTH OF PATH (MILES)	WIDTH OF PATH (YARDS)	NO. OF PERSONS		ESTIMATED DAMAGE		CHARACTER OF STORM
					KILLED	INJURED	PROPERTY	CROPS	
39 SOUTH DAKOTA									
SDZ00W Western South Dakota	07-08	late evening early morning			0	0	0	0	High Winds
		Wind gusts of 50 to 60 mph occurred in the western part of the state. A gust of 62 mph was reported at Rapid City on the late evening of the 7th.							
40 TENNESSEE									
TN2001-002-093-004-005-006 Eastern Tennessee	02-04	2000EST- Afternoon			0	0	6	0	Heavy Snow
		Widespread snow amounts between 1 and 2 feet fell in Eastern Tennessee during the evening of the 2nd, tapered off on the 3rd, but lingered into the 4th. Up to 6 feet of snow, with higher drifts, accumulated in the highest elevations along the TN-KC border. The heavy, wet snow caused hundreds of trees and power lines to fall, blocking roads and causing damage and widespread power outages. Interstate 40 was closed at the TN-KC border for around 24 hours, and many other secondary roads were closed as well. Scores of minor accidents occurred throughout eastern Tennessee, but no serious injuries or fatalities were reported. Roofs, carports, awnings, canopies, and overhangs were damaged. Snowfall amounts were as follows: 3 inches at Chattanooga; 5 inches at Crossville; 10 inches at Knoxville; 18 inches at Greeneville; 19 inches in Newport; and 14 inches in Sneedville, Morris-town, and Bristol. Damage to property and equipment accumulated into the millions of dollars.							
Memphis, Shelby County	11	2255CST			0	1	6	0	Hail (3.00)
Fayette County	11	2355CST			0	0	3	0	Hail (2.00)
Tipton County	12	0090CST			0	0	0	0	Hail (0.75)
Hardeman County	12	0005CST			0	0	0	0	Hail (0.75)
		Severe thunderstorms in southwestern Tennessee around midnight on the 12th yielded hail as large as baseballs. At least one man was injured; he sustained a minor eye injury at his residence in Memphis. Damage was mainly in southern sections of Memphis, from Southwest through the Whitehaven and Airport areas, through Parkway Village to Southeast Memphis. One inch hail was reported at the International Airport. Damage to roofs and vehicles was extensive, and new car dealerships sustained substantial damage to their inventories. In Fayette County, 2 inch hail was reported 4.5 miles northwest of Somerville. In Tipton County, 3/4 inch hail fell at Gilt Edge; 3/4 inch hail also fell in Bolivar in Hardeman County.							
Memphis, Shelby County	13	1410CST			0	2	0	0	Lightning
Memphis, Shelby County	13	1615CST			0	1	0	0	Lightning
		Lightning struck two men who were working on a parked aircraft at the Memphis International Airport. A few hours later, a man was struck by lightning as he was pumping gas into his car at a gas station in southeast Memphis. None of the three was seriously injured.							
Davidson County	13	Afternoon			0	0	4	0	Thunderstorm Wind
		Wind damage occurred to eight boats and one slip at Percy Priest Lake. Loss was estimated at \$40,000.							
Jasper, Marion County	14	1850CST			0	0	0	0	Hail (0.75)
Chattanooga, Hamilton County	14	2030EST			0	0	0	0	Hail (1.00)
Chattanooga, Hamilton County	14	2155EST			0	0	0	0	Hail (0.75)
		Severe thunderstorms in southeastern Tennessee deposited large hail during the late afternoon. 3/4 inch hail fell at Jasper in Marion County, and hail up to 1 inch in diameter fell in the Hixson area of Chattanooga as well as 7 miles east of Chattanooga. Power was disrupted to as many as 60,000 customers in Hamilton County.							
41 TEXAS, Northern									
Tarrant County, Euless	11	1643CST			0	0	?	?	Hail (0.75)
		Hail up to 3/4 inch in diameter fell in Euless.							
Dallas County: Irving	11	1659CST			0	0	?	?	Hail (1.75)
Dallas	11	1711CST			0	0	?	?	Hail (0.75)
		Hail up to golf ball size fell in Irving at 1659CST. Hail to dime size fell in Dallas at 1711CST.							
Rockwall County, Rockwall	11	1803CST			0	0	?	?	Hail (0.75)
		Hail up to 3/4 inch diameter fell at Rockwall.							
TEXAS, Northern									
Tarrant County, Crowley	13	0400CST			0	0	?	?	Hail (1.00)
		Hail to quarter size fell at Crowley.							
Coryell County: Fort Hood AAF	13	0615CST			0	0	?	?	TSTM Wind (52)
Copperas Cove	13	0615CST			0	1	4	?	TSTM Wind
		Wind gusts of up to 52 knots were observed at Fort Hood AAF. Two mobile homes were destroyed by the wind in Copperas Cove, with a 21-year-old resident of one of the mobile homes receiving minor injuries.							
Bell County: Killeen	13	0615CST			0	0	6	?	TSTM Wind (85)
Temple Mun. Airport	13	0636CST			0	0	?	?	TSTM Wind (65)
7W Temple	13	0645CST			0	0	4	?	TSTM Wind
Temple	13	0654CST			0	0	?	?	TSTM Wind (52)
5N Temple	13	0700CST			0	0	4	?	TSTM Wind
		Strong winds of up to 85 knots (measured at Killeen Municipal Airport) produced around \$1 million in property damage in Killeen around 0615CST. Buildings and hangars at the Killeen Municipal Airport were damaged. Two airplanes were destroyed and 10 more were damaged. Considerable roof damage occurred throughout Killeen, with numerous signs and several utility poles downed by the winds. Winds to 65 knots were recorded at Temple Municipal Airport at 0636CST. Several mobile homes were damaged and trees uprooted near Morgan's Point (7 miles west of Temple) at 0645CST. Winds to 52 knots were measured in downtown Temple at 0654CST. Several recreational vehicles were overturned by strong winds 5 miles north of Temple at 0700CST.							
McLennan County: 2NE Moody	13	0655CST			0	0	3	?	TSTM Wind
15 Waco Madison-Cooper Airport	13	0709CST			0	0	0	0	Funnel Cloud
Waco	13	0715CST			0	0	6	?	TSTM Wind
10 NE Waco	13	0715CST			0	0	0	0	Funnel Clouds
		Strong winds overturned a mobile home 2 miles northeast of Moody at 0655CST. A funnel was observed over Lake Waco at 0709CST. Strong winds at 0715CST caused about \$2.5 million in damage in Waco. The strong winds damaged the roofs of businesses and schools, unroofed several homes, and uprooted hundreds of trees. Two funnel clouds were observed 10 miles northeast of Waco at 0715CST.							
Falls County, 5N Marlin	13	0720CST			0	0	?	?	TSTM Wind
		Strong winds downed several large trees about 5 miles north of Marlin.							
Limestone County, Mexia	13	0745CST			0	0	?	?	TSTM Wind (52)
		Wind gusts up to 52 knots were observed by the Mexia Fire and Police Departments.							
Freestone County, Wortham	13	0750CST			0	0	?	?	TSTM Wind (52)
		Winds up to 52 knots were observed in Wortham.							
Navarro County, Dawson	13	0800CST			0	0	3	?	TSTM Wind
		The roof of a house was blown off by strong winds in Dawson.							
Henderson County: Gun Barrel City	13	0815CST			0	0	3	?	TSTM Wind
Achens	13	0855CST			0	0	3	?	TSTM Wind
		Strong winds blew down a traffic light and a power pole and shattered a restaurant window in Gun Barrel City at 0815CST. Strong winds uprooted several trees and damaged several barns in Achens at 0855CST.							
Van Zandt County: 2S Canton	13	0850CST			0	0	3	?	TSTM Wind
1S Grand Saline	13	0900CST			0	0	?	?	TSTM Wind
		Strong winds took the roof off a barn 2 miles south of Canton at 0850CST. Strong winds downed trees 1 mile south of Grand Saline at 0900CST.							
Kaufman County, Mabank	13	0855CST			0	0	3	?	TSTM Wind
		Strong winds knocked a steeple off a church in Mabank.							
Rains County, 2NE Emory	13	0915CST			0	0	?	?	TSTM Wind
		Strong winds broke large tree limbs off trees 2 miles northeast of Emory.							
Hepkins County, 11S Sulphur Springs and Martin Springs	13	0930CST			0	0	?	?	TSTM Wind
		Strong winds uprooted trees 2 miles south of Seymour (11 miles south of Sulphur Springs) and at Martin Springs.							
Rusk County, 5E Reklaw	13	0950CST			0	0	?	?	Hail (1.00)
		Hail up to one inch in diameter fell 5 miles east of Reklaw.							

STORM DATA AND UNUSUAL WEATHER PHENOMENA

APRIL 1987

PLACE	DATE	TIME - LOCAL STANDARD	LENGTH OF PATH (MILES)	WIDTH OF PATH (YARDS)	NO. OF PERSONS		ESTIMATED DAMAGE		CHARACTER OF STORM
					KILLED	INJURED	PROPERTY	CROPS	

PLACE	DATE	TIME - LOCAL STANDARD	LENGTH OF PATH (MILES)	WIDTH OF PATH (YARDS)	NO. OF PERSONS		ESTIMATED DAMAGE		CHARACTER OF STORM
					KILLED	INJURED	PROPERTY	CROPS	

— TEXAS, Northern

Harrison County, 5N Marshall	13 0958CST				0	0	?	?	Hail (0.75)	Penny size hail fell 5 miles north of Marshall.
Harrison and Marion Counties, 2N Karnack	13 1005CST				0	0	?	?	Hail (1.00)	Hail up to one inch in diameter fell near Caddo Lake State Park (2N Karnack).
Cass County, Kildare	13 1015CST				0	0	?	?	Hail (1.00)	Hail up to one inch in diameter fell near Kildare.
Bowie County, 1E Wright Patman Lake	13 1022CST				0	0	?	?	Hail (1.00)	Hail up to one inch in diameter fell one mile east of the Wright Patman Lake Dam.
Eastland County, Cisco	20 1735CST				0	0	?	?	Hail (1.00)	Hail up to one inch in diameter began falling at Cisco at 1735CST and accumulated to a depth of 3 and 1/2 inches in places by 1750CST.
Stephens County, Gunsight	20 1740CST				0	0	?	?	Hail (0.75)	Hail up to the size of dimes fell at Gunsight.
Wise County: 4SW Alvord, 4N Bridgeport, 4S Alvord	20 1800CST 20 1815CST 20 1825CST				0	0	?	?	Hail (1.00) Hail (1.00) Hail (1.00)	Hail up to the size of quarters fell 4 miles southwest of Alvord at 1800CST. Hail up to one inch in diameter fell and covered the ground 4 miles north of Bridgeport at 1815CST. Hail up to the size of nickels fell 4 miles south of Alvord at 1825CST.
Palo Pinto County: Possum Kingdom Lake, 2E Possum Kingdom Lake	20 1830CST 20 1905CST				0	0	?	?	Hail (1.75) Hail (1.00)	Hail up to the size of golf balls fell at Possum Kingdom Lake at 1830CST. Hail up to one inch in diameter fell two miles east of Possum Kingdom Lake at 1905CST.

41 TEXAS, Southern

South Texas	03 Morning				0	0	0	4	Extreme Cold	Unseasonably cold weather continued into the first part of the month. Many low temperature records were set for so late in the season. On the morning of the 3rd, San Antonio reported the latest freeze on record with a low of 31 degrees. College Station reported 30 degrees with many area nurseries reporting considerable damage to bedding plants. Beaumont reported 32, Victoria and Corpus Christi had 33. Houston Intercontinental Airport had 31. The following day on the 4th, many daily record low temperatures were also set, but it was not as cold as the 3rd.
Llano County	13 0430CST				0	0	5	0	Istm. Winds (?)	High winds from a thunderstorm did scattered damage over the county. On the west side of the town of Llano, a motel lost its roof. In Kingsland, there was damage to a convenience store and to other buildings. Parts of roofs on a number of houses on the west side of Lake Buchanan were damaged. At Tow, the winds damaged a boat dock and toppled nearby trees. Other trees were also uprooted between Llano and Lake Buchanan.
Burnet County	13 0545CST				0	0	5	0	Tstm. Winds (52)	High winds from a thunderstorm estimated at near 60 MPH did scattered damage around the town of Burnet. Power lines and poles were downed. One airplane was flipped over at the Burnet Airport. Near Lake Buchanan, a roof was blown off of a vacant building. Trees were also uprooted.
Burnet County	13 0545CST				0	0	?	?	Hail (1.75)	Hail the size of golfballs fell near Lake Buchanan and in the town of Burnet. The hail did damage to windows, roofs, and automobiles at Lake Buchanan. Hail also damaged fruit trees and gardens.
Williamson County	13 0605CST				0	0	0	0	Tstm. Winds (52)	High winds from a thunderstorm estimated at near 60 MPH hit the town of Andice. Damage was not reported.

— TEXAS, Southern

Williamson County	13 0635CST				0	0	0	0	Hail (1.75)	Golfball size hail fell at Liberty Hill. Damage was not reported.
Jasper County	13 1518CST				0	0	0	0	Hail (1.75)	Hail the size of golfballs fell in Kirbyville. Damage was not reported.
Val Verde County	20 1358CST				0	0	?	0	Tstm. Winds (57)	High winds from a thunderstorm gusted to 66 MPH at the NWS office in Del Rio. The high winds at the airport damaged three hangar doors which were blown inward.
Bexar County	24 1315CST				0	0	0	0	Hail (1.75)	Hail the size of golfballs fell at Windsor Park Mall on the northeast side of the city of San Antonio. Damage was not reported.
Bexar County	24 1330CST				0	4	0	0	Lightning	Lightning struck near three men standing on a dock on Lake Calaveras. One man was seriously injured, the other two were treated and released at the scene. Another man on the other side of town, on the north side, was knocked down by lightning as it struck a nearby tree in his yard. The man was doing yard work at the time. He was treated at a nearby hospital and released.
Nueces County	25 Not known				0	0	?	?	Hail (1.00)	Hail the size of quarters fell near Mathis. The large hail knocked out windows and damaged crops.

41 TEXAS, Western

Tom Green County	20 Est. 2000CST				0	0	5	0	Thunderstorm Wind (Est. 65)	Thunderstorm wind gusting to an estimated 65 knots unroofed a barn and destroyed a mobile home near the community of Grape Creek in the northwest part of the county. The apparent micro-burst also tore apart numerous sheds and trailers, spreading debris more than a half-mile across adjacent pastures. Hail associated with the thunderstorm fell as big as golfballs and chicken eggs between the communities of Grape Creek and Carlsbad. The hail covered the ground and piled up in drifts a foot deep, beating young crops to the ground.
------------------	-----------------	--	--	--	---	---	---	---	-----------------------------	--

42 UTAH

UTZ003 Wasatch Front	02 0230MST				0	0	1	0	High Wind (G 53)	Easterly canyon winds gusted to 60 mph in Weber County early on this Thursday. The wind gust was observed by a Utah Highway Patrolman, just south of Hill AFB.
UTZ010 Northern Mountains	18 1115MST				0	0	1	0	High Wind (G 56)	
UTZ010 Northern Mountains	18 1330MST				0	0	1	0	High Wind (G 87)	
UTZ003 Wasatch Front	18 Afternoon				4	0	4	0	High Wind	
UTZ002 Western Desert	18 1708MST				0	0	5	0	High Wind (G 53)	
UTZ001 Cache Valley	18 1845MST				0	0	1	0	High Wind (G 69)	A blustery cold front contributed to four deaths and caused a considerable amount of damage during the first part of this Easter Weekend. A few of the reported wind gusts included: a gust to 64 mph at the Park City Angle Station at about 12:15 p.m. MDT; a gust to 99 mph at the same station at about 1:30 p.m.; a gust to 60 mph at Wendover at 6:08 p.m.; and a gust to 79 mph in Logan at around 7:45 p.m. Damage reports indicated high wind speeds along the Wasatch Front during the afternoon hours. The deaths occurred as a result of a boating accident on Utah Lake during the afternoon. The exact time of the accident was not known. Persons in the vicinity of the accident reported that the waves were very choppy on the lake, and that the boat which sunk had engine trouble. Several power outages were reported along the Wasatch Front. Eleven and one-half miles of the Southern Pacific Causeway was badly damaged by high waves on the southern shore of the Great Salt Lake, and Interstate 80 along the south shore was closed for a time because of waves breaking over the dikes. M280 M240 M160 F220
San Juan County, Grand View Point	26 1830MST				2	0	1	0	Lightning	Two student volunteers at Canyonlands National Park were killed when lightning struck a tree under which they sought refuge from a thunderstorm. F240 M220

STORM DATA AND UNUSUAL WEATHER PHENOMENA

APRIL 1987

PLACE	DATE	TIME - LOCAL STANDARD	LENGTH OF PATH (MILES)	WIDTH OF PATH (YARDS)	NO. OF PERSONS		ESTIMATED ¹ DAMAGE		CHARACTER OF STORM
					KILLED	INJURED	PROPERTY	CROPS	
43 VERMONT									
Bennington County	04	0700EST			1	26	8	7	Flood
Windham "									
Rutland "									Heavy rain created spring flooding conditions in most of the state.
Windsor "									One man was killed trying to jump his snowmobile across a flood-swollen creek in Ludlow.
Orange "									
Caledonia "									
Essex "									Many Corp of Engineers dams spilled, during this event, for the first time in their history. Several roads and bridges were washed out across the state. Over 250 families around the state had to be evacuated from their homes. Stream bank erosion has become a very big problem for residents after the event.
Orleans "									
Lamoille "									
Franklin "									
Chittenden "									
Addison "									
Washington "									This flood came less than a week after a similar flood event.
Bennington County	05	1900EST			0	0	4	0	High wind
									High wind accompanied a slow-moving coastal rain storm. These high winds brought down trees and power lines in 14 locations around the county.
Orange County	29	0300EST			0	0	5	0	Snow
Addison "									
Windsor "									A low pressure center off the Maine Coast gave Northern Vermont its first significant snowfall since mid-March. Reports of new snow ranged from 3 to 7 inches. The heavy wet snow brought down tree limbs and power lines.
Lamoille "									
Franklin "									
Orleans "									
Essex "									
44 VIRGINIA									
VAZ015-016 Southwestern Virginia	02	1000EST			0	0	4	0	Heavy Snow
									Snow began at midday on Thursday, April 2nd and then became heavy on Friday and Saturday before it tapered off on Saturday night. Amounts averaged 11 to 17 inches, but reached 35 inches or more on the highest ridges. A hangar roof at Lonesome Pine Airport collapsed, damaging 3 airplanes, and a roof caved in on a hardware store in Dickenson County. Up to 10,000 homes were without power. No major accidents or injuries were reported.
VAZ003-005-006-007-008-009-010-011-012-013-014-015-016 All Virginia except the extreme east	15	0200EST			3	6	6	0	Flood
									A slow-moving low center spread heavy rain across most of Virginia from Wednesday, April 15th to Saturday, the 18th. Rainfall amounts averaged 3 to 5 inches, but some locations received over 6 inches. Zones 11 and 12 were hardest hit, having numerous road closings and damage to temporary bridges, and the most damage was reported in Augusta County. Flooding began on Thursday in the western areas, and crests peaked on Sunday in the east. The James River inundated Scottsville, and flooded parts of Richmond on Saturday night and Sunday, temporarily shutting down the waste treatment plant. Flooding occurred on the Roanoke, Dan, South, Staunton, Shenandoah, Mayo and Maury rivers. A young boy drowned in a creek in Botetourt County; an older woman drowned in the Shenandoah near Mt. Jackson when her car was swept into the river as she attempted to cross a bridge; and a young man drowned in Caroline County when his canoe capsized in the North Anna River. Five elderly women in Salem were trapped in a car in an alley for 20 minutes as water rose to seat level; a 50-year-old man suffered a fractured skull after spending 9 hours trapped in his car in Amherst County; and 3 boys were rescued off a small island in the Potomac River in Loudoun County.
									M070, F74V, N220
VAZ006-007-008-009-010-012-013-014-015-016 Northern and Western Virginia	23	1500EST			0	0	5	0	Flood
									Rain, both widespread and from thunderstorms, fell in amounts of 3 to 7 inches on Thursday, April 23rd through Saturday the 25th. The majority of the flooding occurred on Saturday and early Sunday, mainly along the Dan, Roanoke and James rivers. A bridge in Amherst County was closed for part of Thursday after a barge was pinned against it. A pickup truck was found in a creek in Bland County; the driver was assumed to have gotten out safely. Road closings were frequent, but not as widespread as the earlier flooding event in mid April.
VAZ001-002 Southeastern Virginia	25	0800EST			0	0	2	0	High Wind
									A low center moved off the North Carolina coast during Friday night, the 24th. Brisk northeast winds developed along the southeast Virginia coast on Saturday and Sunday, and peaked near 50 mph at times. Minor tidal flooding occurred as water levels rose to 2 to 2.5 feet above normal. There were no reports of beach erosion.
45 WASHINGTON									
Chelan County	29	morning			0	0	4	0	Lightning
									Thunderstorms developed in unstable air behind a frontal system and lightning strikes to power substations caused scattered power outages. In the town of Monitor, 8 miles northwest of Wenatchee, lightning struck the roof of a house, igniting a fire that caused minor damage.
46 WEST VIRGINIA									
WVZ002-003-004-005-006-007-008-009 Statewide	03-05				3	?	5	?	Heavy Snow
									Low pressure developed along a cold front in eastern North Carolina and moved northeast, producing the heaviest snowfall ever recorded during the month of April in West Virginia, and the heaviest snowstorm of the decade in many locations. Some larger amounts included 26.5 inches at Welch, 22.5 inches in Gary near the Tug Fork River, and 22 inches at Pickins. Twenty inches was recorded in Charleston. Three traffic deaths were attributed to the storm. In addition to power outages, schools and businesses closed, and a drug store roof collapsed under the weight of the heavy snow in Charleston.
WVZ010-011 Eastern Panhandle	16	2300EST			0	0	5	?	Flood
									Heavy rains fell in amounts in excess of 2 inches during the preceding 2 days, bringing monthly totals to over 6 inches. Flooding occurred along the banks of the Shenandoah and Potomac rivers. Many sections of roads and overpasses were closed due to high water. Route 220 in Moorefield was covered with 5 feet of water and 10 families were evacuated. One woman had to be rescued from her submerged car after she had attempted to cross a flooded overpass on Opequon Creek south of Martinsburg.
WVZ004-006-007 South-Central	24	1630EST			1	0	5	?	Flood
									Heavy rains of as much as 3 inches in 24 hours produced widespread flooding of small streams and creeks in south-central West Virginia. Beckley reported 24-hour rainfall totals of 3.02 inches. One fatality was reported as weather-related. Calvin Acord, age 49, suffered a massive heart attack while removing household furnishings from flooded areas of his home. The most serious flooding occurred in Fayette County.
WVZ001 Hancock County	27	1800EST			0	0	4	0	Thunderstorm Wind
									A roof was blown off of a house in New Cumberland during a thunderstorm.
WVZ001 Ohio County	27	1800EST			0	0	?	?	Thunderstorm Wind
									The Ohio County Sheriffs Department reported that large trees fell on power lines in the vicinity of Wheeling Island. The felled trees and wires blocked roads and interrupted power to over 2,000 families.
WVZ001 Marshall County	27	1820EST			0	0	0	0	Thunderstorm Wind
									A large tree fell near Glendale in Marshall County during a thunderstorm.
WVZ004 Kanawha County	27	2012EST			0	0	4	?	Thunderstorm Wind
									Four large trees were blown down near Yeager Airport in Charleston. Large trees were also reported as down in St. Albans, while windows were blown out in store fronts and traffic lights blown down in the Patrick Street Plaza area.
WVZ005 Upshur County	27	2100EST			0	2	3	?	Thunderstorm Wind
									A large tree was uprooted and fell onto a passing car, injuring both the driver and passenger.
47 WISCONSIN									
WIZ004 North-Central Wisconsin	20	afternoon			0	0	?	?	Lightning/ Forest Fires
									Lightning touched off 10 forest fires across north-central Wisconsin where dry conditions had existed for several weeks. The largest fire burned 1210 acres in the Chequamegon National Forest in Price County and was not contained until 4 days later. The fire burned an area south of Pike Lake and Highway 70 along forest road 132 in the Fould Creek area, part of which was severely damaged by a June 1985 tornado.

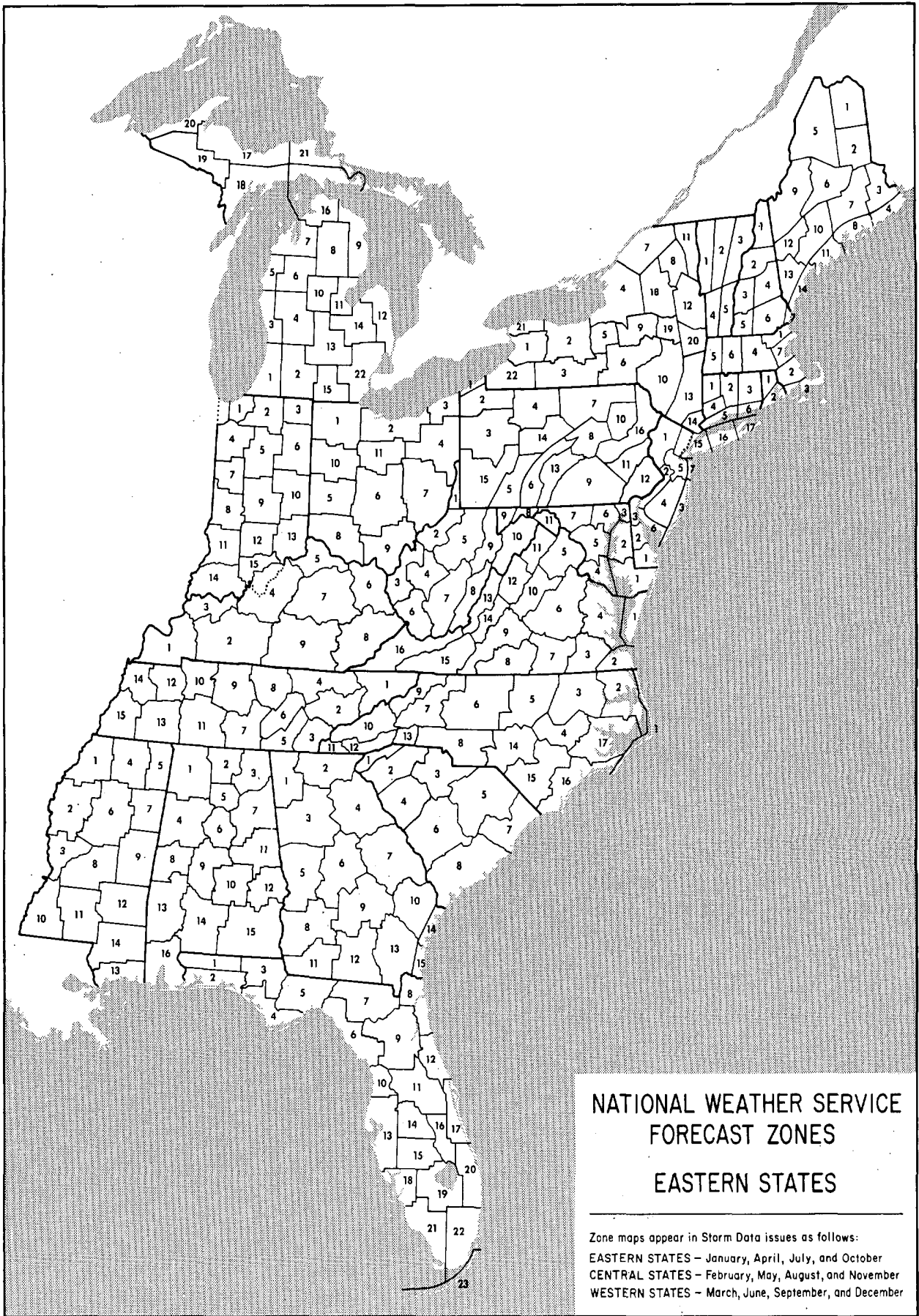
STORM DATA AND UNUSUAL WEATHER PHENOMENA

APRIL 1987

PLACE	DATE	TIME - LOCAL STANDARD	LENGTH OF PATH (MILES)	WIDTH OF PATH (YARDS)	NO. OF PERSONS		ESTIMATED DAMAGE		CHARACTER OF STORM
					KILLED	INJURED	PROPERTY	CROPS	
48 WYOMING									
WYZ0NE Northeast Wyoming	08	1830 to 1935MST			0	0	4	0	High winds
		A sudden wind storm swept through the northeast with winds gusting between 45 to 70 miles an hour. These strong wind gusts ripped off a mobile home roof just south of Sheridan. Also, a large sign valued at \$2,500 was toppled at the Sheridan County Airport. In other wind-related occurrences, and old pump house roof blew off at the Sheridan Municipal Golf Course. A tree was uprooted in downtown Sheridan, with over 125 homes darkened by fallen power lines in Buffalo, about 50 miles south of Sheridan. A fire partially damaged a sawmill at Rancheater, about 10 miles north of Sheridan. These strong winds temporarily caused the fire to become out of control. Numerous metal flashings were ripped off buildings from Sheridan to Upton. The town of Upton is located about 45 miles southeast of Gillette. Strong wind gusts were also clocked over 50 miles an hour at Lovell, about 90 miles west of Sheridan.							
WYZ016-017 Southeast Wyoming	10	1345 to 1800MST			0	0	0	0	High winds
		West to northwest winds of 30 to 45 miles an hour with gusts to 65 miles an hour were recorded along Interstate 80 between Cheyenne and Laramie.							
WYZ009-010 Wind River Mountains and Basin	12	0000 to 1100MST			0	0	0	0	Heavy snow
		A low pressure system developed over Colorado and, combined with a moist northeasterly upslope wind, dumped about 11 inches of snow at the Lander airport.							
WYZ012-016 Southeast Wyoming	20	0100 to 2030MST			0	0	0	0	High winds, Heavy snow
		An intense cold front moved through Wyoming late on the 19th of April. This front brought with it strong gusty winds of 45 to 50 miles an hour and locally, areas of heavy snow over southeast Wyoming. The combination of strong winds and snow produced areas of blowing snow which reduced visibilities below one-half mile mainly near Cheyenne. Behind this front locally heavier amounts of snow fell. Laramie airport reported from six to seven inches of snow with near nine inches of snow in the Laramie Mountains between Laramie and Cheyenne. Chugwater, about 45 miles north of Cheyenne, reported five inches of snow. Otherwise, one to three inches of snow were common.							
Fremont County	30	1703MST			0	0	0	0	Thunderstorm wind (35)
		At 1703 MST wind gusts of 63 miles an hour were logged at Hunt Field in Lander with a thunderstorm.							
Fremont County	30	1730MST			0	0	0	0	Thunderstorm wind (32)
		At 1730 MST wind gusts of over 60 miles an hour were observed by Ft. Washakie police due to a thunderstorm. Ft. Washakie is located about 15 miles north of Lander.							
49 ALASKA, Northern ————— NO REPORT RECEIVED									
49 ALASKA, Southern									
Western Aleutians	02	1200AST			0	?	?	0	High Wind
		An intense storm in the western Bering Sea caused winds that reached 85 mph at the Air Force base at Shemya in the western Aleutians. A ship offshore of the island reported 95 mph winds. The lowest reported pressure in the storm was 933.4 mb, but the lowest estimated central pressure was 927 mb.							
49 ALASKA, Southeastern									
Southern Southeast Alaska	09	morning			0	0	0	0	High Winds
		An intense occlusion crossed southern Southeast Alaska during the morning hours of the 9th, causing wind gusts that approached 60 mph at Metlakatla and Ketchikan. No major damage was reported.							
Dora Bay	15	evening			0	0	5	0	Winds
		A small-but-intense low pressure system crossed the Southeast Alaska panhandle on the afternoon and evening of the 15th. Although winds were generally below warning criteria, gusts of up to 80 knots in Dora Bay, southwest of Ketchikan, drove a 570-foot-long log carrier onto the shore, opening a 12-foot gash in its hull.							
50 HAWAII									
Maui County		21-22 night			0	0	4	0	Flash Flooding
		Heavy showers caused localized flash flooding mainly on southeast Molokai, but also some minor flooding on Maui.							
Maui County		26 1200MST			0	0	5	0	Flash Flooding
		Intense rainfall caused flash flooding and road washouts mainly on west Maui.							
51 PUERTO RICO									
PRZ009-003-039-027-005-011 North-Central Section		12- overnight 13			3	0	6	0	Flash Flooding
		A stationary upper-level trough over the northern sections of Puerto Rico produced up to 17 inches of rainfall over 36 hours with serious flooding over the north-central portion. The most affected town was Vega Baja on the north-central coast when the Indio and Cibuco Rivers went over their banks into the area. Two men in a jeep drowned while trying to cross a small bridge over a flooded creek at night in the nearby town of Guaynabo on Road 174. A third man drowned in a creek near Barrio Bajura, El Cachete Sector near the neighboring town of Vega Alta while trying to drive across a stream. The car was washed away by the strong current. Other towns along the northern coast that were affected were: Camuy, Arecibo, Hatillo, Barceloneta, Manati, Bayamon, San Juan and Trujillo Alto. M45V, M42V, M29V							
52 VIRGIN ISLANDS ————— NONE REPORTED									
53 PACIFIC									
American Samoa		22- night 23			0	0	6	0	Tropical Storm ZUMAN
		Tropical Storm ZUMAN, following a path quite similar to that of Hurricane TUSI three months earlier on January 17th and moving south-southeastward just east of Samoa, caused extensive damage to the Manua group of islands, particularly to Tau which is the easternmost of these islands. Winds with ZUMAN were generally in the 40 to 60 mph range, but locally stronger due to terrain effects. This compares with the much stronger winds in excess of 110 mph reported with TUSI on Tau. The many temporary structures and partially completed buildings left vulnerable in the wake of TUSI's destruction were no match to ZUMAN's fury and were therefore flattened or blown away. The heavy winds and rain commenced around sunset and lasted much of the night. As a sidelight, about one month earlier a weaker tropical cyclone, an unnamed depression or storm, had moved through the same area also causing damage and shredding the tents. It was thus the third time in this 1986-87 season that the inhabitants of the Manua Islands had been visited by tropical cyclones.							

STORM DATA AND UNUSUAL WEATHER PHENOMENA CORRECTIONS

PLACE	DATE	TIME - LOCAL STANDARD	LENGTH OF PATH (MILES)	WIDTH OF PATH (YARDS)	NO. OF PERSONS		ESTIMATED ¹ DAMAGE		CHARACTER OF STORM	PLACE	DATE	TIME - LOCAL STANDARD	LENGTH OF PATH (MILES)	WIDTH OF PATH (YARDS)	NO. OF PERSONS		ESTIMATED ¹ DAMAGE		CHARACTER OF STORM
					KILLED	INJURED	PROPERTY	CROPS							KILLED	INJURED	PROPERTY	CROPS	
46 WEST VIRGINIA																			
<u>JULY 1986</u>																			
ADDITIONAL REPORTS: The following reports are in addition to and provide better definition of already existing reports for July 20th and 26th on page 70 of the July, 1986 issue.																			
Gilmer County	20	1745EST			0	0	?	?	Hail (0.75), Wind										
Dime size hail was reported in the Big Root area of Gilmer County and power lines downed by falling tree limbs blocked portions of State Route 5.																			
Clay County	20	1830EST			0	0	?	?	Wind										
Many large trees were blown down 10 miles north of Ivandale in north-central Clay County.																			
Calhoun County	26	1555EST			0	0	?	?	Hail (1.00), Wind										
Quarter size hail fell and large trees were uprooted in Grantsville near the northeast corner of Calhoun County.																			
Webster County	26	1600EST			0	0	?	?	Hail (0.75), Wind										
Dime size hail was reported and many trees were downed in Webster Springs.																			
Clay County	26	1600EST			0	0	?	?	Hail (0.75), Wind										
Dime size hail was reported and many downed trees blocked Route 4 near Ivandale.																			
Braxton County	26	1600-1615EST			0	0	?	?	Wind										
It was reported that large trees were downed near Burnsville Dam in east-central Braxton County.																			



STORM SUMMARY

APRIL 1987

TYPE	ALABAMA	ARIZONA	ARKANSAS	CALIFORNIA	COLORADO	CONNECTICUT	DELAWARE	FLORIDA	GEORGIA	IDAHO	ILLINOIS	INDIANA	IOWA	KANSAS	KENTUCKY	LOUISIANA	MAINE	MARYLAND & DC	MASSACHUSETTS	MICHIGAN	MINNESOTA	MISSISSIPPI	MISSOURI	MONTANA	NEBRASKA	NEVADA	NEW HAMPSHIRE
TORNADOES																	4										4
Number			1	1				4		2	5	3	3							1							
Days			1	1				2		1	3	2	1							1							
Deaths								1																			
Injuries								7																			
Property Damage			5	5				6			5	4	5							3							
Crop Damage				4							3																
HAIL																											
Deaths																											
Injuries																											
Property Damage	?								?	3	?		4	4		?						?					
Crop Damage	?								3		?			3		?						?					
THUNDERSTORM WINDS																											
Deaths																											
Injuries			5					2			2				1					2							
Property Damage	4		5				4	4	4	6	4	4	5		3	5				3		?	4	5		3	
Crop Damage	?									o/c						?				2		?					
HIGH WINDS																											
Deaths																											
Injuries																											
Property Damage				?						4														4		6	
Crop Damage				?																							
LIGHTNING																											
Deaths																											
Injuries			1							4	5																
Property Damage				?					3																2	4	
Crop Damage				?					?																4	4	
FLASH FLOODS																											
Deaths																											
Injuries																											
Property Damage										5					2												
Crop Damage										6																	
FLOODS																											
Deaths															1					1							
Injuries																											
Property Damage						6							3	6	4					7					4		
Crop Damage						?								7						6					5		
HEAVY SNOWSTORMS AND BLIZZARDS @																											
Deaths																											
Injuries																											
Property Damage							3																				
Crop Damage	5														4					3							5
	o/c														2												
ICE STORMS #																											
Deaths																											
Injuries																											
Property Damage																											
Crop Damage																											
HURRICANES AND TROPICAL STORMS																											
Deaths																											
Injuries																											
Property Damage																											
Crop Damage																											
ALL OTHERS																											
Deaths																											
Injuries																											
Property Damage	5		3																								
Crop Damage	o/c																										

SEE REFERENCE NOTES FOR STORM DAMAGE CATEGORIES

STORM SUMMARY

APRIL 1987

TYPE	NEW JERSEY	NEW MEXICO	NEW YORK	NORTH CAROLINA	NORTH DAKOTA	OHIO	OKLAHOMA	OREGON	PENNSYLVANIA	RHODE ISLAND	SOUTH CAROLINA	SOUTH DAKOTA	TENNESSEE	TEXAS	UTAH	VERMONT	VIRGINIA	WASHINGTON	WEST VIRGINIA	WISCONSIN	WYOMING	ALASKA	HAWAII	PACIFIC	PUERTO RICO	VIRGIN ISLANDS	NATIONAL DEATH & INJURY TOTALS
TORNADOES																											
Number		1																									1
Days		1																									9
Deaths																											
Injuries																											
Property Damage		4																									
Crop Damage																											
HAIL																											
Deaths													1														1
Injuries													6														
Property Damage	?			5			?				5			?													
Crop Damage				?			?				5			?													
THUNDERSTORM WINDS																											
Deaths							1																				1
Injuries				1		3								1													19
Property Damage				5	4	5	5	?			5		4	6						2							
Crop Damage				?	?	?	?				3			?						5							
HIGH WINDS																											
Deaths															4												4
Injuries																											2
Property Damage			5					4							5	4	2					4					
Crop Damage																											
LIGHTNING																											
Deaths																2											2
Injuries														4													8
Property Damage									3				3		1			4			?						
Crop Damage																					?						
FLASH FLOODS																											
Deaths																									3		3
Injuries			10																								10
Property Damage			8																								
Crop Damage			7	6																				5	6		
FLOODS																											
Deaths																											4
Injuries			72													26	6										104
Property Damage			9	5	?	5			1	4	4					8	6										
Crop Damage			7	?	?					?						7											
HEAVY SNOWSTORMS AND BLIZZARDS @																											
Deaths																											
Injuries																											
Property Damage																											
Crop Damage			4	5		?				4	4		6			5	4										
ICE STORMS #																											
Deaths																											
Injuries																											
Property Damage																											
Crop Damage																											
HURRICANES AND TROPICAL STORMS																											
Deaths																											
Injuries																											
Property Damage																											
Crop Damage																									6		
ALL OTHERS																											
Deaths																											
Injuries																											
Property Damage			5	6		5			3		5																
Crop Damage														4													

SEE REFERENCE NOTES FOR STORM DAMAGE CATEGORIES .

REFERENCE NOTES

† Storm damage categories are from 1 to 9 as follows:

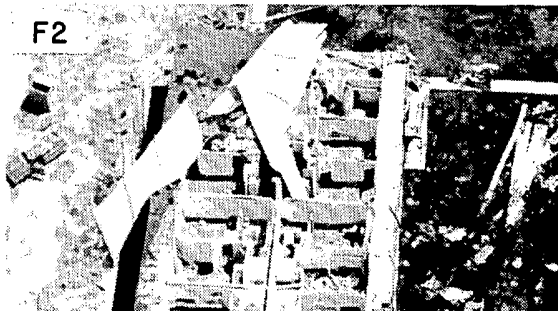
- 1 Less than \$50
- 2 \$50 to \$500
- 3 \$500 to \$5,000
- 4 \$5,000 to \$50,000
- 5 \$50,000 to \$500,000
- 6 \$500,000 to \$5 Million
- 7 \$5 Million to \$50 Million
- 8 \$50 Million to \$500 Million
- 9 \$500 Million to \$5 Billion

- * Miles instead of yards
- ** Yards instead of miles
- @ Includes heavy sleet storm
- # Freezing drizzle and freezing rain, commonly known as glaze
- ≠ Not received or incomplete
- o/c Under Estimated Damage, Property/Crops, indicates crop damage amount is included in the figure given

Definition of Fujita Tornado Scale (F scale)

(F0) Gale tornado (40-72 mph): Light damage
Some damage to chimneys; break branches off trees; push over shallow-rooted trees; damage sign boards.

F2



(F1) Moderate tornado (73-112 mph): Moderate damage
The lower limit (73 mph) is the beginning of hurricane wind speed; peel surface off roofs; mobile homes pushed off foundations or overturned; moving autos pushed off the roads.

F3



(F2) Significant tornado (113-157 mph): Considerable damage
Roofs torn off frame houses; mobile homes demolished; boxcars pushed over; large trees snapped or uprooted; light-object missiles generated.

(F3) Severe tornado (158-206 mph): Severe damage
Roofs and some walls torn off well-constructed houses; trains overturned; most trees in forest uprooted; heavy cars lifted off ground and thrown.

F4



(F4) Devastating tornado (207-260 mph): Devastating damage
Well-constructed houses leveled; structure with weak foundation blown off some distance; cars thrown and large missiles generated.

(F5) Incredible tornado (261-318 mph): Incredible damage
Strong frame houses lifted off foundations and carried considerable distance to disintegrate; automobile-sized missiles fly through the air in excess of 100 m; trees debarked; incredible phenomena will occur.

F5



(F6-F12) (319 mph to Mach 1, the speed of sound):
The maximum wind speeds of tornadoes are not expected to reach the F6 wind speeds.

(F0+F1) Weak Tornado

(F2+F3) Strong Tornado

(F4+F5) Violent Tornado

From J. Atmos. Sci., August 1981, p. 1517-1519

USCOMM-NOAA-ASHEVILLE, N.C. 1987-2075



12th ANNUAL CONFERENCE
MAY 16-19, 1988

VANDERBILT PLAZA HOTEL
NASHVILLE, TENNESSEE
Hosted by the Tennessee Valley Authority

**CALL
FOR
PAPERS**

Association of State Floodplain Managers, Inc.
Presents

FLOODPLAIN HARMONY

Note the Past — Tune the Future!

The Association of State Floodplain Managers (ASFP) is a national organization, and its goal is the reduction of flood hazards through sound floodplain management. Its members include representatives of local, State, and Federal government as well as those of the private and nonprofit communities. The Association sponsors an annual conference on the state-of-the-art in flood hazard reduction. Conference topics always span a broad spectrum of issues of interest to those involved in floodplain management.

The Federal Interagency Floodplain Management Task Force has commissioned a study of the status and effectiveness of the Nation's floodplain management activity to fulfill recommendations set forth in the document "A Unified National Program for Floodplain Management." Special emphasis is to be placed on the floodplain management tools contained in this document. A status report is now being prepared. The Task Force has requested the assistance of the ASFP in the second part of the study—an evaluation of the effectiveness of floodplain management measures—and the ASFP has agreed to devote a portion of its 1988 conference to this effort.

The following specific topics are presented to enhance the discussion and evaluation of the effectiveness of floodplain management efforts during the Association's 1988 conference. Papers are solicited in response to one or more of these topics. Although a portion of the conference will be devoted to a discussion of the status report and effectiveness evaluation, papers are welcomed on other aspects of floodplain management not addressed by the following specific topics.

- Efforts in analysis and management of special problem areas, e.g., alluvial fans, shifting streambeds, etc.
- Multiobjectives planning processes for the management of floodplains
- Effectiveness of floodplain management tools, whether individually or in tandem
- How the full range of benefits from nonstructural measures can be better identified and quantified
- How nonstructural measures can be made more attractive to local governments
- Examples of wise or beneficial uses of the floodplain
- Solving specific floodplain management problems through a combination of selective tools and strategies
- How we can increase the public official and individual decisionmaker's awareness of flood hazard areas and the understanding of flood risk

Submission of Abstracts

Three copies of abstracts for papers must be submitted by November 25, 1987, to Bill Trakimas, Conference Program Chair, at the address below.

Abstracts should not exceed 200 words and must include the paper's title and all authors' names, affiliations, addresses, and phone numbers. Authors will receive timely notification of the status of their paper. A copy of the complete paper must be submitted by June 1, 1988, for inclusion in the 1988 published proceedings. All attendees, including authors, will be expected to pay the registration fee for the conference.

CONFERENCE HOST: Tennessee Valley Authority

Conference Director

Leslie A. Bond
Suite 1
221 East Camelback Road
Phoenix, AZ 85012
(602) 831-0192

Program Chair

William L. Trakimas
Division of Water
2475 Directors Row
Indianapolis, IN 46241
(317) 232-4178

Exhibits Chair

Sue Josheff
Natural Resources
Post Office Box 7921
Madison, WI 53707
(608) 266-2709



12th ANNUAL CONFERENCE
MAY 16-19, 1988

VANDERBILT PLAZA HOTEL
NASHVILLE, TENNESSEE
Hosted by the Tennessee Valley Authority

**CALL
FOR
PAPERS**

Association of State Floodplain Managers, Inc.
Presents

FLOODPLAIN HARMONY

Note the Past — Tune the Future!

* DETAILS INSIDE *

DEPARTMENT OF COMMERCE
NATIONAL OCEANIC AND ATMOSPHERIC ADMINISTRATION
NATIONAL ENVIRONMENTAL SATELLITE, DATA, AND INFORMATION SERVICE
NATIONAL CLIMATIC DATA CENTER
FEDERAL BUILDING
ASHEVILLE, N.C. 28801

*TO CHANGE YOUR ADDRESS, PLEASE RETURN A COPY OF
THE MAILING LABEL ALONG WITH YOUR NEW ADDRESS.*

**BULK RATE
POSTAGE & FEES PAID**
United States Department Of Commerce
NOAA Permit No. G - 19