

STORM DATA



WITH ERRATA FOR THE ANNUAL TORNADO SUMMARY PUBLISHED IN THE DECEMBER 1986 EDITION.



"I CERTIFY THAT THIS IS AN OFFICIAL PUBLICATION OF THE NATIONAL OCEANIC AND ATMOSPHERIC ADMINISTRATION AND IS COMPILED FROM INFORMATION RECEIVED AT THE NATIONAL CLIMATIC DATA CENTER, ASHEVILLE NORTH CAROLINA" 28801

Kenneth D. Walden

DIRECTOR
NATIONAL CLIMATIC DATA CENTER

Support for this publication is provided in part by the Office of Naval Research, Marine Meteorology Program, Dr. Robert F. Abbey, Jr., Director. Extensive data collection efforts are provided by the National Weather Service.

C O N T E N T S

Cover: A giant Lake Michigan wave, driven by winds gusting up to 70 mph, crashes into a lakeshore apartment building in Chicago, Illinois, sending spray well above the third-floor level. Numerous residences and miles of public parks suffered substantial damage as a result of a February 8th storm that, combined with an abnormal and dangerously high lake level, gave the city its most extensive and costly, shoreline erosion/flood event of its history (see Item 3, page 20). ---Photo by Tom Cruze, The Chicago Sun-Times, copyright 1987; and supplied by Richard Koeneman, NWSFO at Chicago, Illinois.

	<u>Page</u>
Outstanding Storms of the Month.....	3
Storm Data and Unusual Weather Phenomena.....	25
Storm Summary.....	40
Reference Notes.....	42
"F" Scale Definitions.....	42
Tornado Summary ERRATA.....	I-12

STORM DATA
(ISSN 0039-1972)

The section on Outstanding Storms of the Month is prepared by Professor T. Theodore Fujita, editor, and Duane J. Stiegler, associate editor, the University of Chicago with funding by the U. S. Office of Naval Research. The Storm Data and Unusual Weather Phenomena narratives, and summaries of Hurricanes/Tropical Storms are prepared by the National Weather Service. The National Climatic Data Center compiles statistics on deaths, injuries, damage, and prepares the annual summaries of Tornadoes and Lightning. This publication contains our best information on storms, but, due to the difficulties inherent in collection of this type of data, it is not all-inclusive. Late reports and corrections will be carried quarterly. Maps of zones used in the Storm Data and Unusual Weather Phenomena will be published in these editions; Eastern States: JAN, APR, JUL, OCT.
Central States: FEB, MAY, AUG, NOV.
Western States: MAR, JUN, SEP, DEC.

Storm Data is published monthly by the National Climatic Data Center.

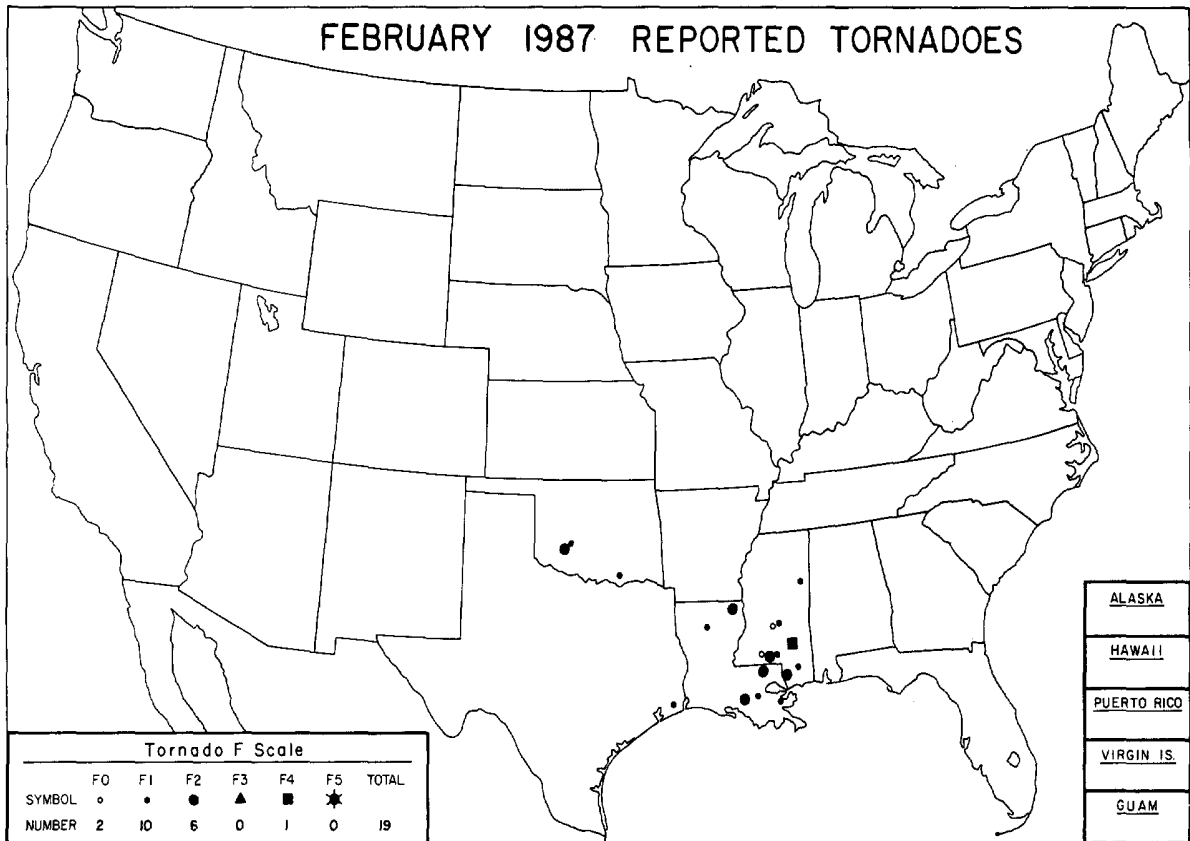
Publication Staff

J. D. Ziemianski	S. C. Lackey
Supervisory Meteorological Technician	Editorial Clerk

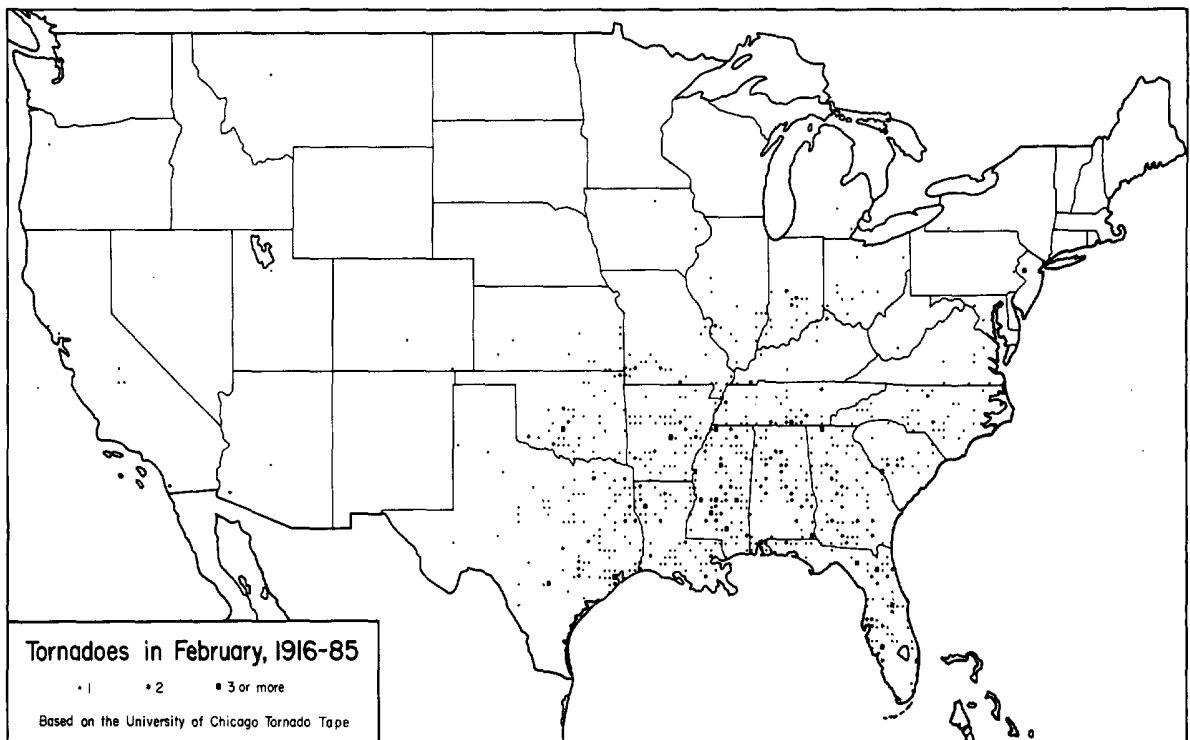
Subscription, pricing, and ordering information is available from:

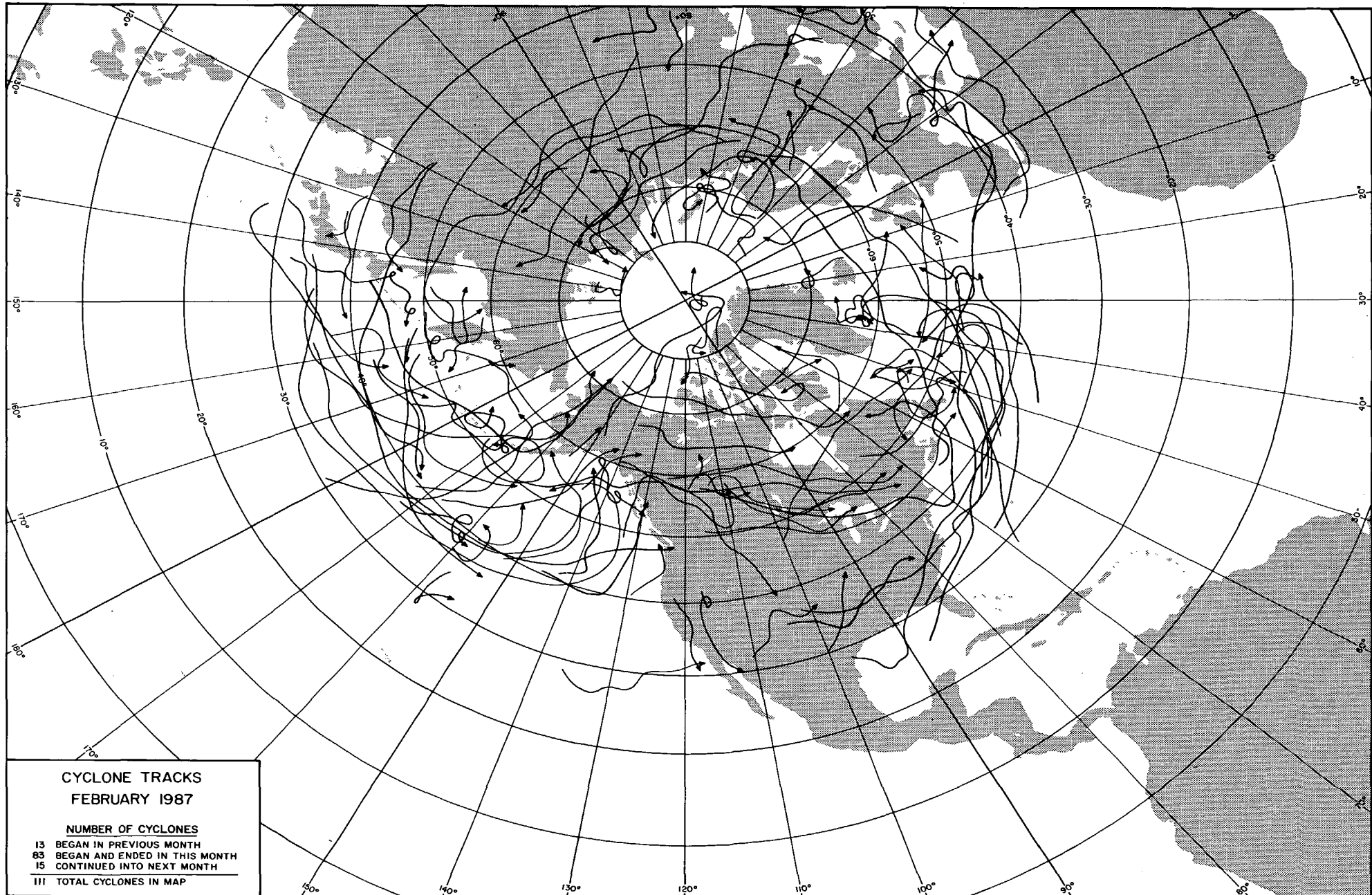
National Climatic Data Center
Federal Building
Asheville, NC 28801-2696

OUTSTANDING STORMS OF THE MONTH



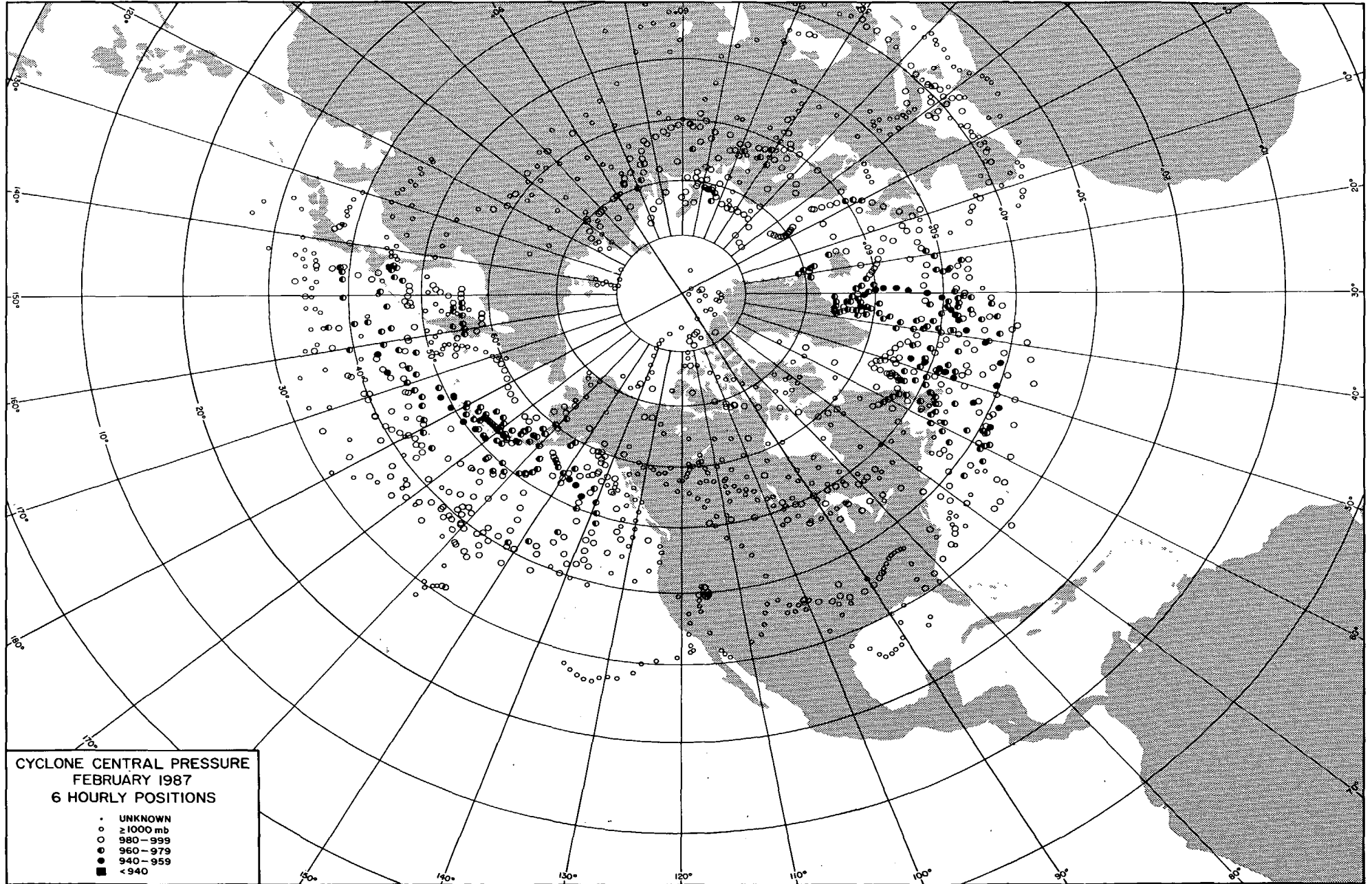
<ul style="list-style-type: none"> ● COMPLETE REPORT RECEIVED ○ PRELIMINARY REPORT RECEIVED ○ REPORT NOT RECEIVED <p>(N) northern (W) western (S) southern (C) central (E) eastern (O) coastal (SE) southeastern</p>	<table style="width: 100%; border-collapse: collapse;"> <tr> <td>● 1AL</td><td>● 7DE</td><td>● 14KS</td><td>● 21MN</td><td>● 28NJ</td><td>● 33OH</td><td>● 39SD</td><td>● 44VA</td><td>● 49AK(SE)</td> </tr> <tr> <td>● 2AZ</td><td>● 8FL</td><td>● 15KY</td><td>● 22MS</td><td>● 29NM</td><td>● 34OK</td><td>● 40TN</td><td>● 45WA</td><td>● 50HI</td> </tr> <tr> <td>● 3AR</td><td>● 9GA</td><td>● 16LA</td><td>● 23MO</td><td>● 30NY(O)</td><td>● 35OR</td><td>● 41TX(N)</td><td>● 46WV</td><td>● 51PR</td> </tr> <tr> <td>● 4CA(N)</td><td>● 10ID</td><td>● 17ME</td><td>● 24MT</td><td>● 30NY(C)</td><td>● 36PA(E)</td><td>● 41TX(S)</td><td>● 47WI</td><td>● 52VI</td> </tr> <tr> <td>● 4CA(S)</td><td>● 11IL</td><td>● 18MD</td><td>● 25NE</td><td>● 30NY(W)</td><td>● 36PA(W)</td><td>● 41TX(W)</td><td>● 48WY</td><td>● 53PC</td> </tr> <tr> <td>● 5CO</td><td>● 12IN</td><td>● 19MA</td><td>● 26NV</td><td>● 31NC</td><td>● 37RI</td><td>● 42UT</td><td>○ 49AK(N)</td><td></td> </tr> <tr> <td>● 6CT</td><td>● 13IA</td><td>● 20MI</td><td>● 27NH</td><td>● 32ND</td><td>● 38SC</td><td>● 43VT</td><td>○ 49AK(S)</td><td></td> </tr> </table>	● 1AL	● 7DE	● 14KS	● 21MN	● 28NJ	● 33OH	● 39SD	● 44VA	● 49AK(SE)	● 2AZ	● 8FL	● 15KY	● 22MS	● 29NM	● 34OK	● 40TN	● 45WA	● 50HI	● 3AR	● 9GA	● 16LA	● 23MO	● 30NY(O)	● 35OR	● 41TX(N)	● 46WV	● 51PR	● 4CA(N)	● 10ID	● 17ME	● 24MT	● 30NY(C)	● 36PA(E)	● 41TX(S)	● 47WI	● 52VI	● 4CA(S)	● 11IL	● 18MD	● 25NE	● 30NY(W)	● 36PA(W)	● 41TX(W)	● 48WY	● 53PC	● 5CO	● 12IN	● 19MA	● 26NV	● 31NC	● 37RI	● 42UT	○ 49AK(N)		● 6CT	● 13IA	● 20MI	● 27NH	● 32ND	● 38SC	● 43VT	○ 49AK(S)	
● 1AL	● 7DE	● 14KS	● 21MN	● 28NJ	● 33OH	● 39SD	● 44VA	● 49AK(SE)																																																								
● 2AZ	● 8FL	● 15KY	● 22MS	● 29NM	● 34OK	● 40TN	● 45WA	● 50HI																																																								
● 3AR	● 9GA	● 16LA	● 23MO	● 30NY(O)	● 35OR	● 41TX(N)	● 46WV	● 51PR																																																								
● 4CA(N)	● 10ID	● 17ME	● 24MT	● 30NY(C)	● 36PA(E)	● 41TX(S)	● 47WI	● 52VI																																																								
● 4CA(S)	● 11IL	● 18MD	● 25NE	● 30NY(W)	● 36PA(W)	● 41TX(W)	● 48WY	● 53PC																																																								
● 5CO	● 12IN	● 19MA	● 26NV	● 31NC	● 37RI	● 42UT	○ 49AK(N)																																																									
● 6CT	● 13IA	● 20MI	● 27NH	● 32ND	● 38SC	● 43VT	○ 49AK(S)																																																									





Missing data: Eurasian continent area only, 12GMT, Feb. 9 through 12GMT, Feb. 18

Mapped at the University of Chicago from NMC, 6-hourly surface maps



Missing data: Eurasian continent area only, 12 GMT, Feb. 9 through 12 GMT, Feb. 18

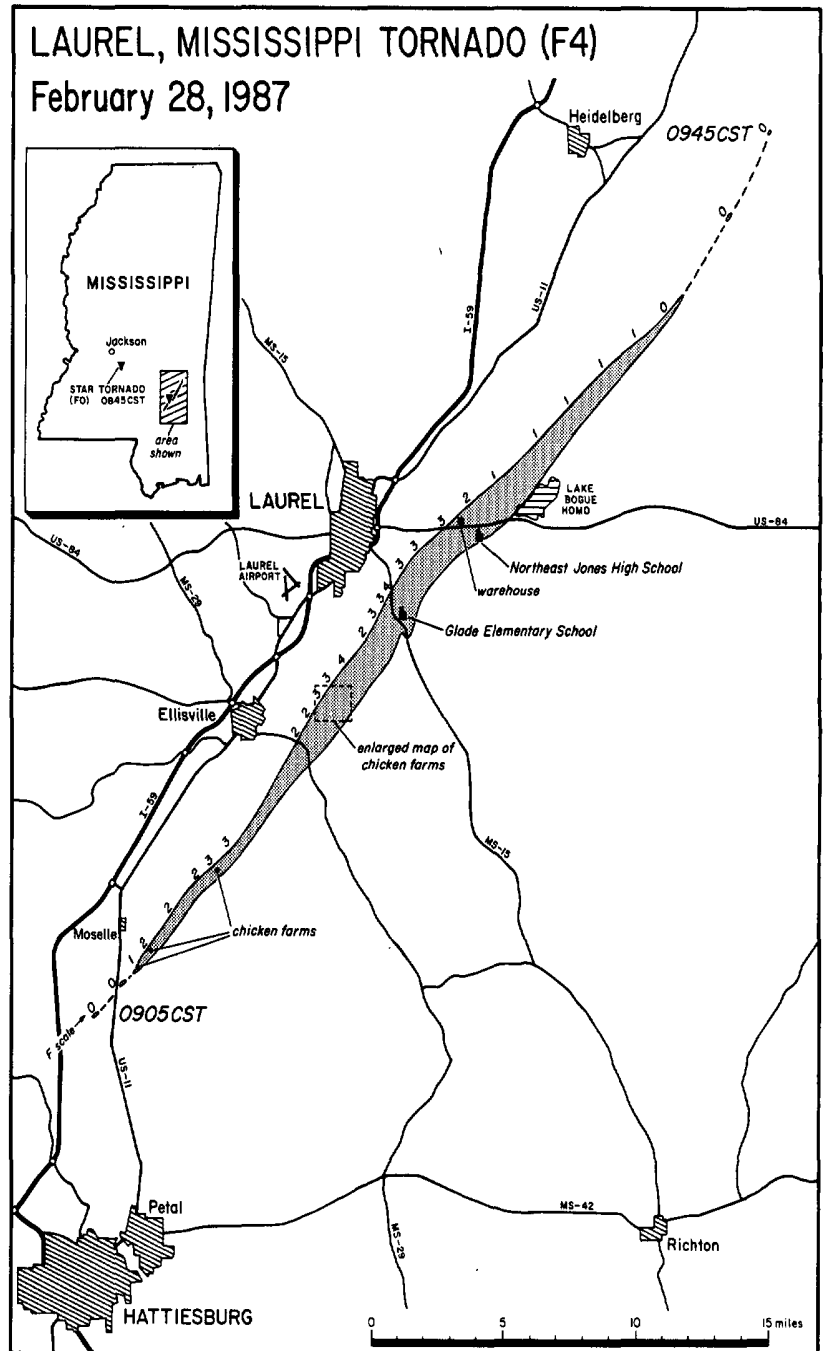
Mapped at the University of Chicago from NMC, 6-hourly surface maps

1. TORNADO near LAUREL, MISSISSIPPI on February 28, 1987

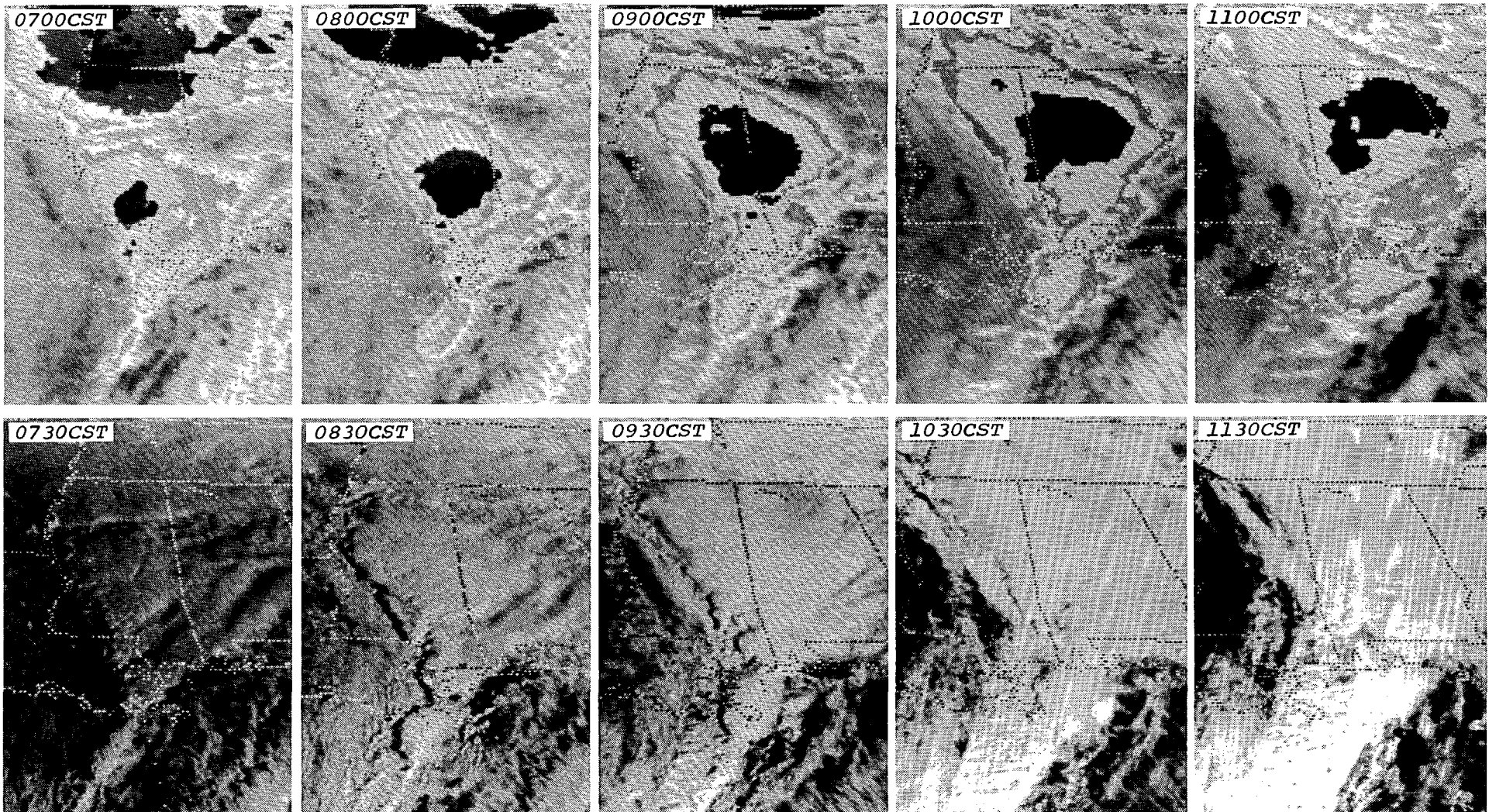
At 0905CST on Saturday, February 28th, a fast-moving thunderstorm spawned a tornado that left a 40-mile path of destruction near Laurel in southeast Mississippi. The tornado started near U.S. Highway 11 about 8 miles north of Hattiesburg, traveled north-northeast on a course parallel to and about 3 miles southeast of Interstate 59, and ended about 7 miles east of Heidelberg (see map below). As it moved through the outskirts of Laurel, the tornado inflicted its greatest and most intense damage in the small communities of Glade, along Mississippi Highway 15, and Powers, along U.S. Highway 84. In this area the path became as wide as 1.5 miles and included F4 intensity damage. Two schools were struck and partially destroyed in the communities, but luckily, no classes were in session as it was a Saturday morning.

In all, the storm did an estimated 28.5 million dollars in damage. Destroyed were 383 of 653 structures affected. There were 6 deaths, 350 injuries, and about 700 people left homeless. As bad as it was in this mostly rural area, the situation could have been much worse had the tornado's path been displaced only a few miles to the northwest so as to encompass Laurel, Ellisville and the rest of the more heavily populated corridor along Interstate 59 and U.S. Highway 11.

Another tornado on the morning of the 28th produced only minor, F0 damage mostly to trees near Star to the southeast of Jackson (see map inset).

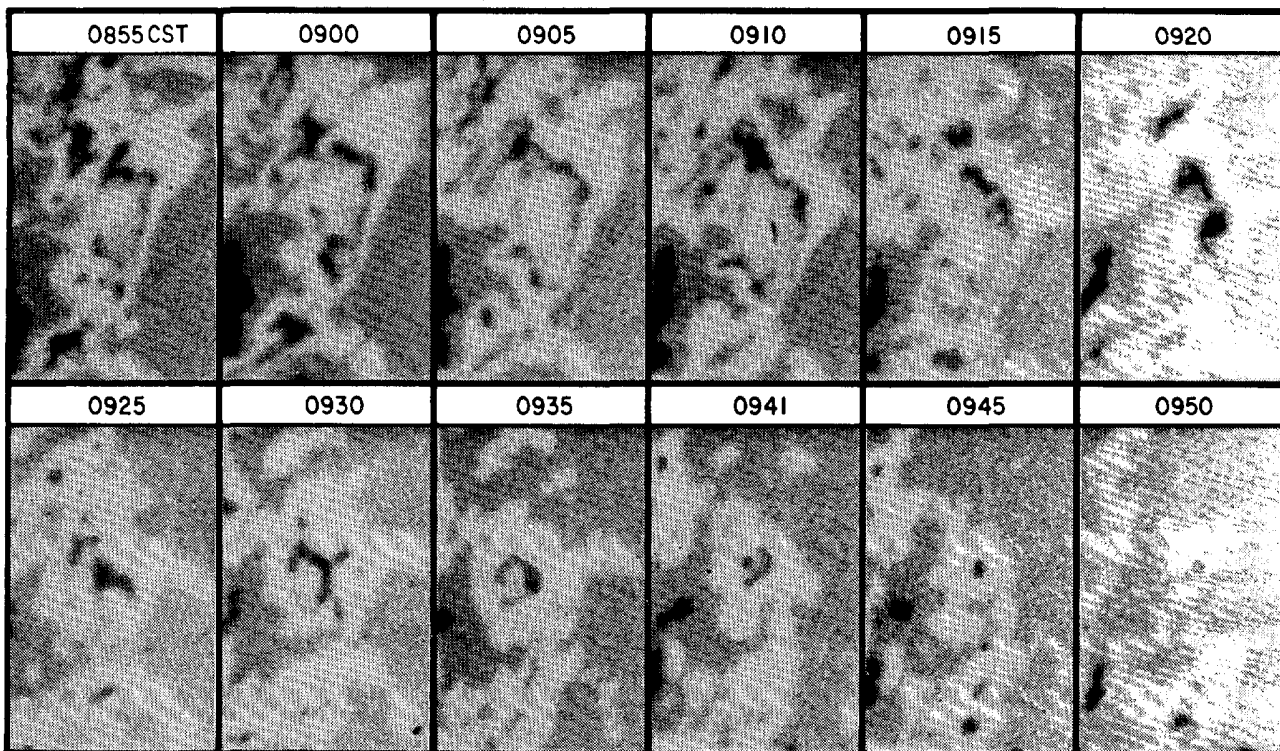


Damage path of the F4 tornado near Laurel, Mississippi on February 28, 1987. ---Mapped from aerial survey conducted on March 4, 1987 by Duane J. Stiegler, University of Chicago, and materials from surveys conducted by the NWSFO at Jackson, Mississippi.

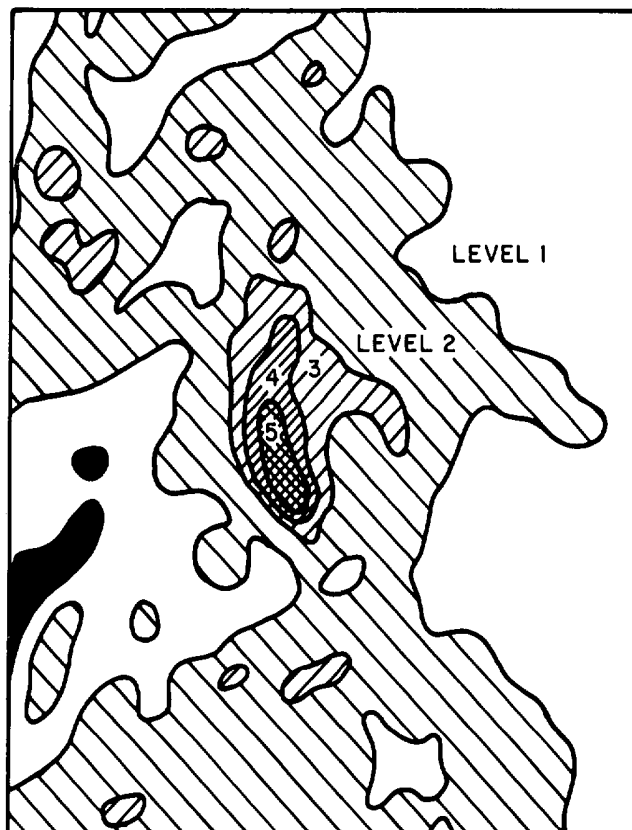
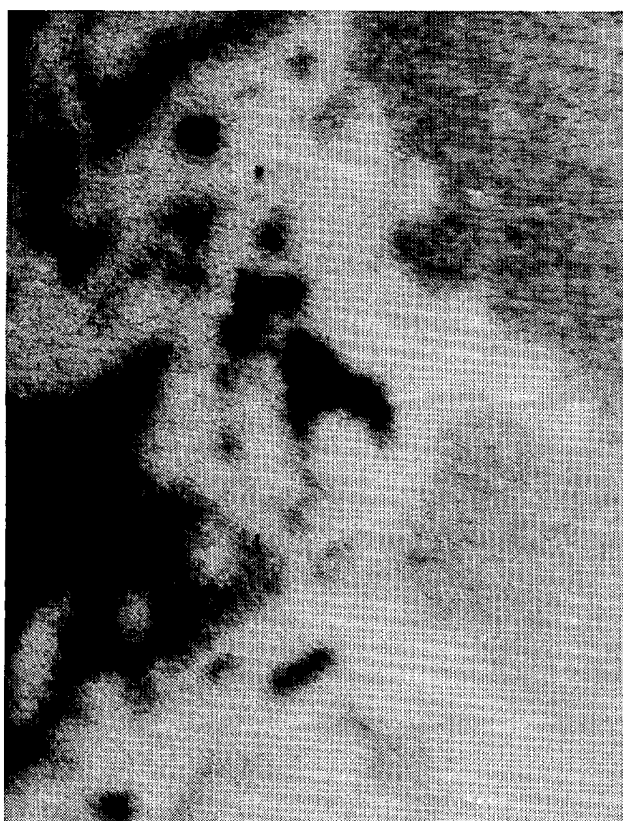


GOES 6 satellite images in infrared (top) and visible (bottom) sequences show the line of convection through Louisiana, Mississippi, and Alabama on the morning of February 28th. The infrared sequence illustrates that an area of very cold cloud top (black and dark grey areas), an indicator of deep convection with strong vertical motion, had emanated and expanded from the cell that produced the massive F4 tornado. ---Photos from NESDIS.

TORNADO near LAUREL, MISSISSIPPI ---- continued



A sequence of PPI scope images from the WSR-57 radar at the NWSFO in Jackson, Mississippi showing the echo of the tornado-bearing thunderstorm at 5-minute intervals during the tornado's occurrence. The cell was between 60 and 65 nautical miles from the radar. When viewed in a movie loop, the images reveal that the echo exhibited a distinct and rapid, counterclockwise rotation. ---Radar microfilm from NCDC.



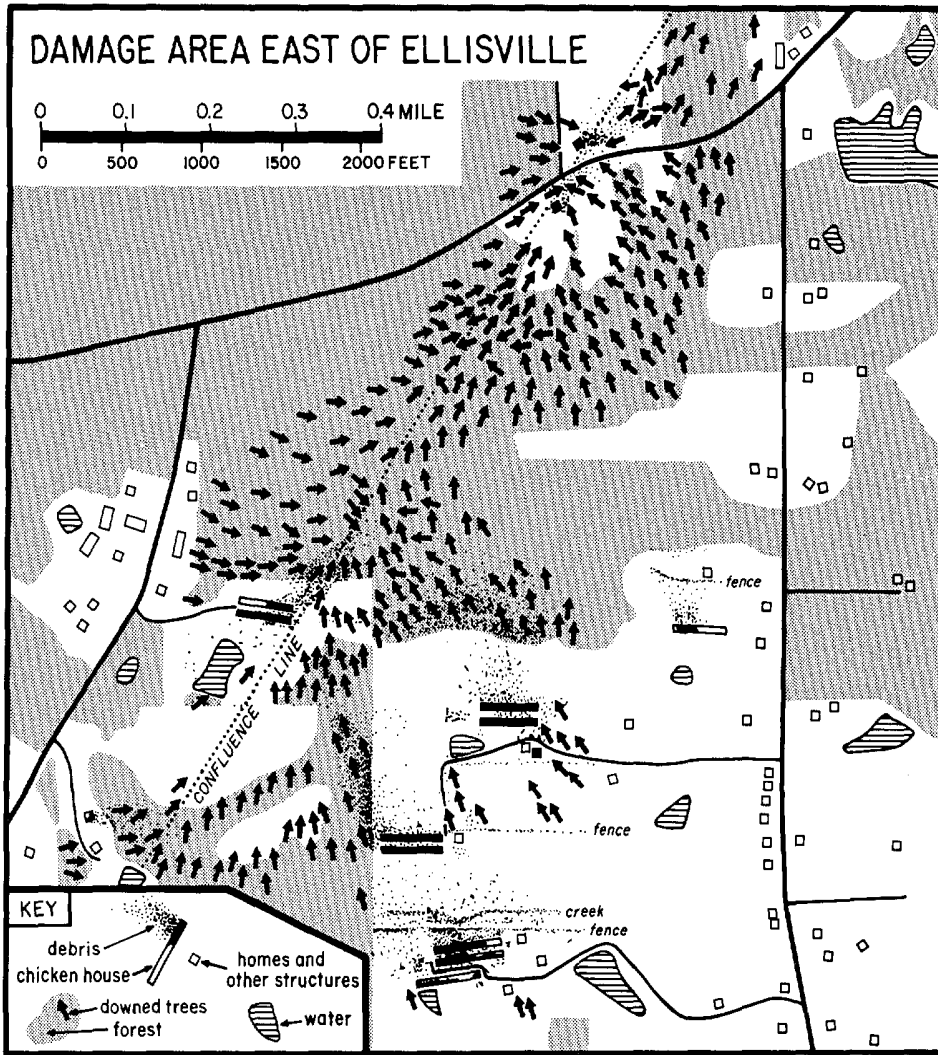
An enlargement (left) and schematic interpretation (right) of the 0925CST image in the sequence at top show in better detail the VIP (Video Integrator and Processor) intensity levels for the echo at a time when it assumes a configuration that is most demonstrative of the cell's rotation and tornado production. Level 5 intensity equates to theoretical rainfall rates of 2 to 5 inches per hour. ---Schematic by University of Chicago.



The first serious damage caused by the tornado was to two chicken farms just south-east of Moselle, shown left and right above in order of occurrence. Many of these farms were struck during the first half of the tornado's life, and thereby incurred a large portion of the total commercial losses. Also seen in the photos, many nearby pecan orchards suffered heavy losses as the trees were easily uprooted. ---(UC photos)

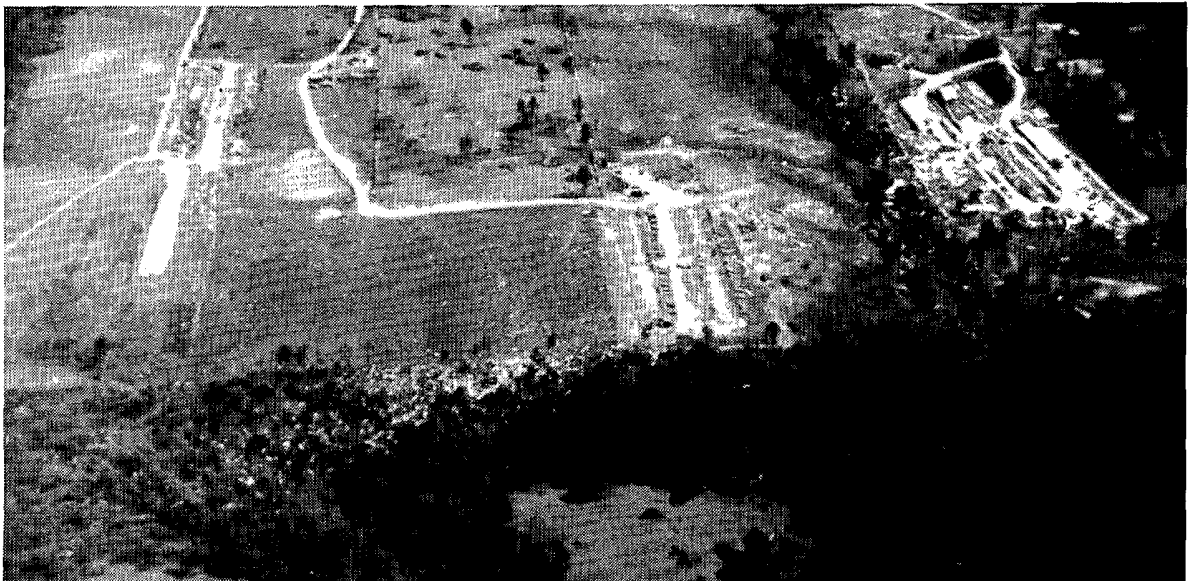


A home about 5 miles northeast of Moselle that received F3 intensity damage. Few of the nearby trees were left standing, and their pattern of fall indicates that the house was in the path of the confluence line created by the tornado's winds. ---(UC)



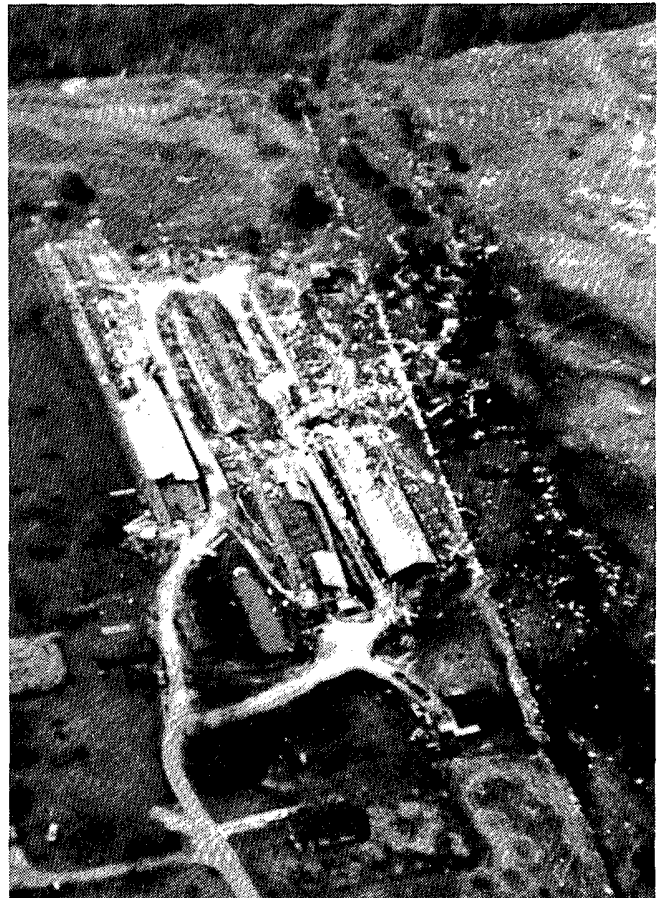
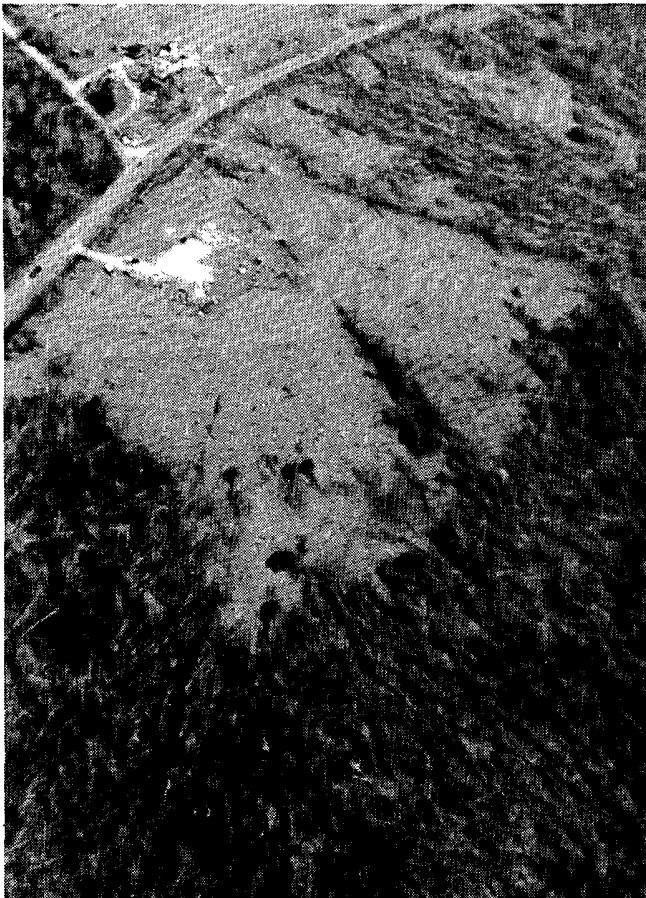
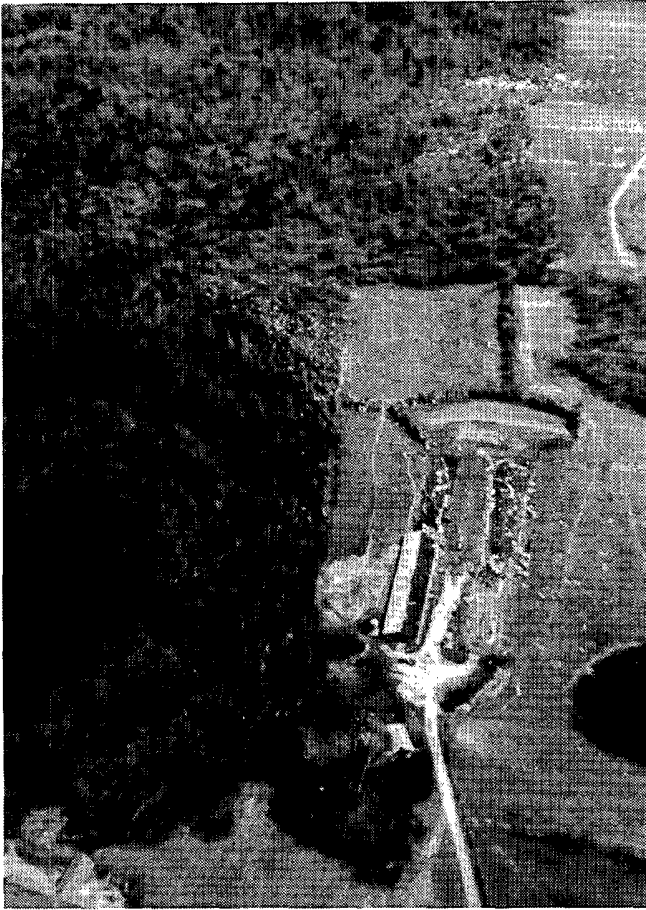
Survey and mapping by Duane J. Stiegler, University of Chicago

A detailed map of the damage area east of Ellisville where numerous chicken houses were destroyed (see location in map on page 6). Felled trees and scattered debris mark out a single confluence line, demonstrating that a single, large vortex moved through the area. As shown, much of the debris was captured along fences and creeks, and within forest areas.



An eastward aerial view of destroyed chicken houses mapped at top. ---(UC)

TORNADO near LAUREL, MISSISSIPPI ---- continued



Additional views of the damage mapped in the figure on the preceding page. Directions of view, clockwise from top left, are east, south-southeast, west-northwest, and north-east. ---All four photos (UC).



An overhead view of the Glade water tower along Mississippi Highway 15. It suffered only minor damage from impacting airborne debris, while nearby, mobile homes were demolished and practically every tree was felled. ---(UC)



The Glade Elementary School, located across the highway from the water tower, as viewed toward the southeast. The school's main building suffered up to F3 intensity damage, but the detached gymnasium was totally destroyed. ---(UC)



The ravaged Glade Elementary School as viewed from overhead. ---(UC)

TORNADO near LAUREL, MISSISSIPPI ---- continued



A composite, south-southeast view of the Glade Elementary School's gymnasium shows that all that was left standing were the lower portions of the supporting walls which abutted the spectator stands, and the stands themselves. ---(NWS)

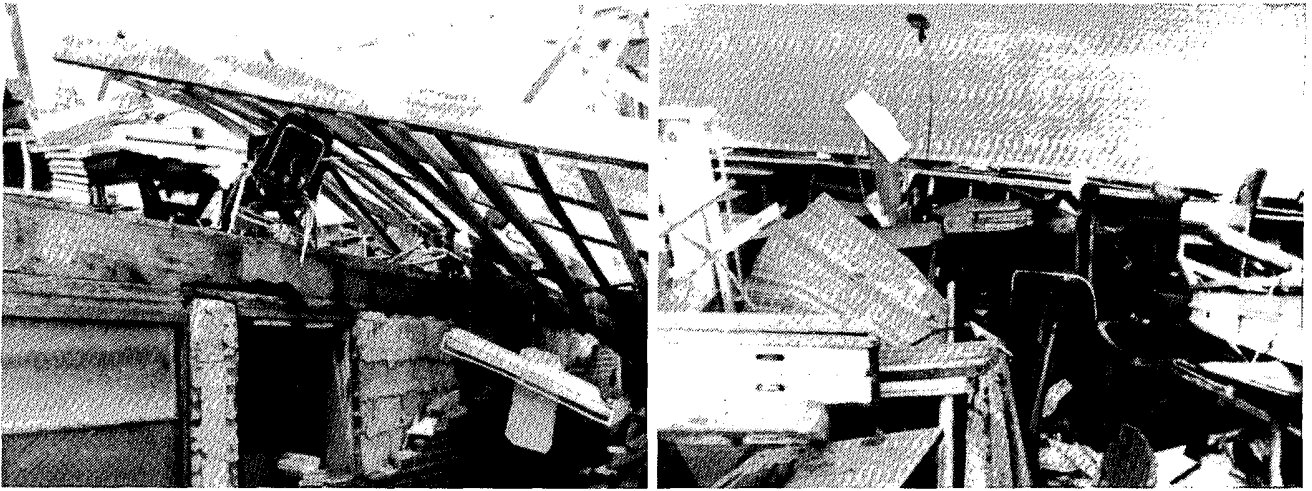


The gym's remains as seen from its east-southeast corner. ---(NWS)

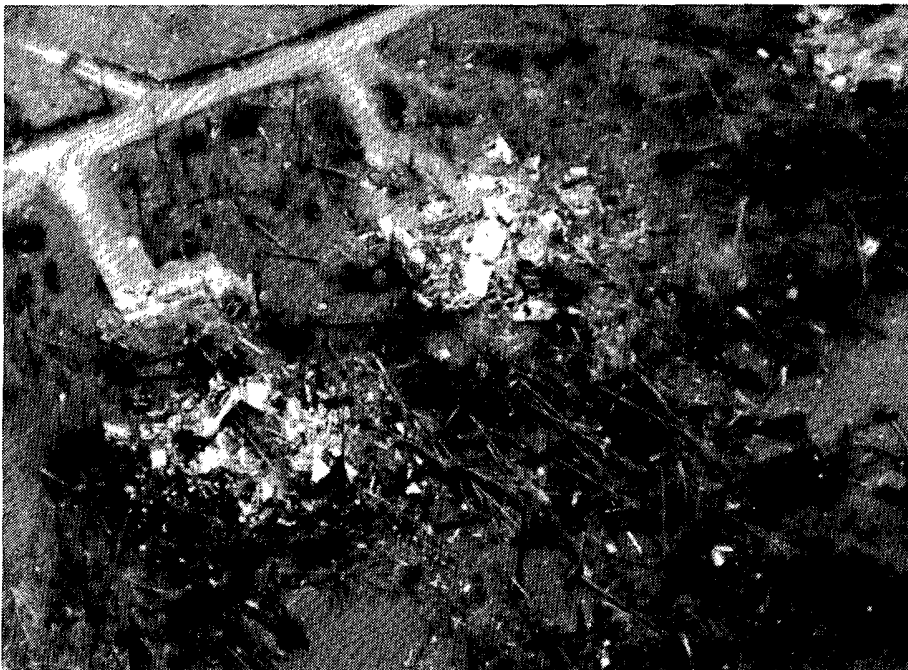


Damage to the school's exterior walls along the sides facing west-southwest (left) and east-northeast (right). ---Both photos (NWS).

TORNADO near LAUREL, MISSISSIPPI ---- continued



Additional views of damage at the Glade Elementary School. ---Both photos (NWS).



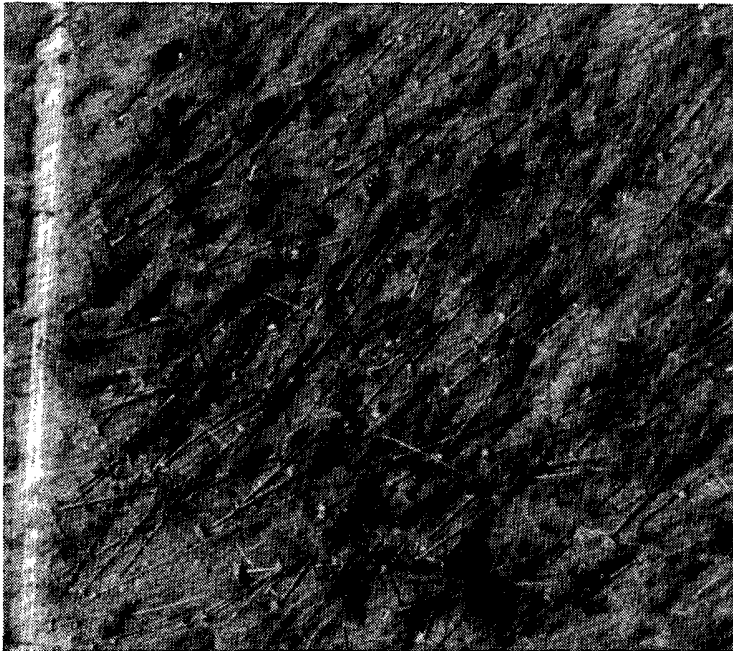
Home and tree destruction about one-half mile beyond the Glade school along the tornado's path. ---(UC)

A location about 1 mile past the Glade school along the tornado's path where mobile homes were obliterated. ---(UC)





Overhead view of a partially destroyed home and large, uprooted trees also in Glade, about one-half mile north-northeast of the elementary school. ---(UC)



ABOVE: A stand of pines that are no longer standing as a result of the tornado's winds. Very few of the trees, located 1 mile south of U.S. Highway 84, escaped being uprooted or snapped off. They fell northwest. ---(UC)



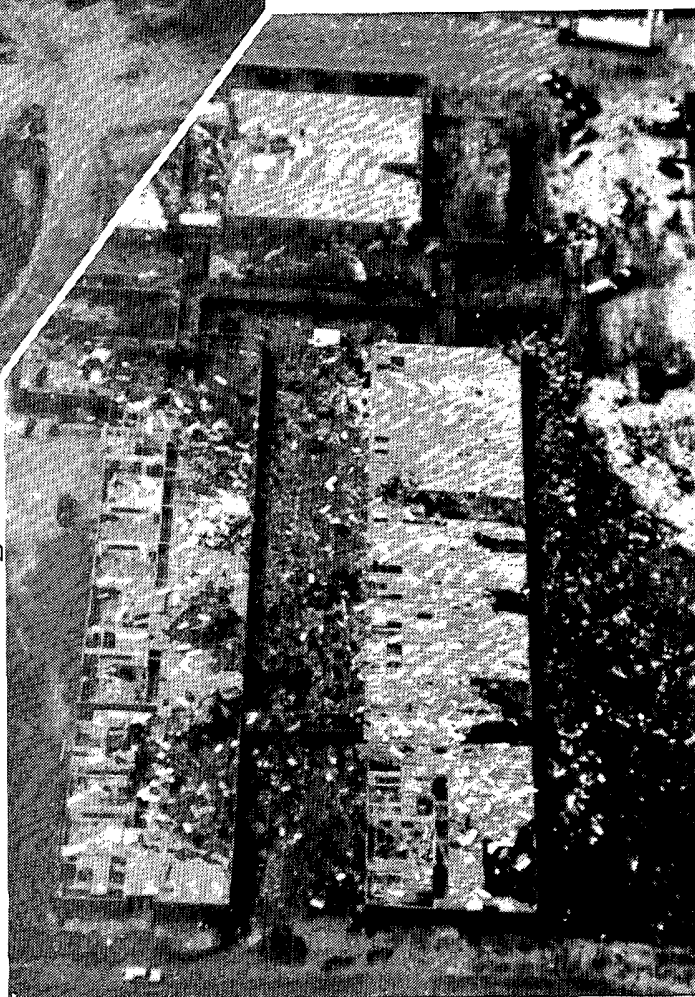
RIGHT: A newly constructed warehouse that was ripped to shreds as the tornado crossed U.S. Highway 84. It was located on the north side of the highway in the Powers community, about 4 miles east of Laurel. ---(UC)

TORNADO near LAUREL, MISSISSIPPI ---- continued

The second school struck by the tornado was the Northeast Jones High School, seen at right in a north-northeast aerial view. Named for its location within Jones County, the school is situated on the south side of U.S. Highway 84 in the Powers community, about 5 miles east of Laurel. It suffered mainly roof damage structurally, but interior damage was also high due to blown out windows that allowed wind and rain infiltration.
---(UC)

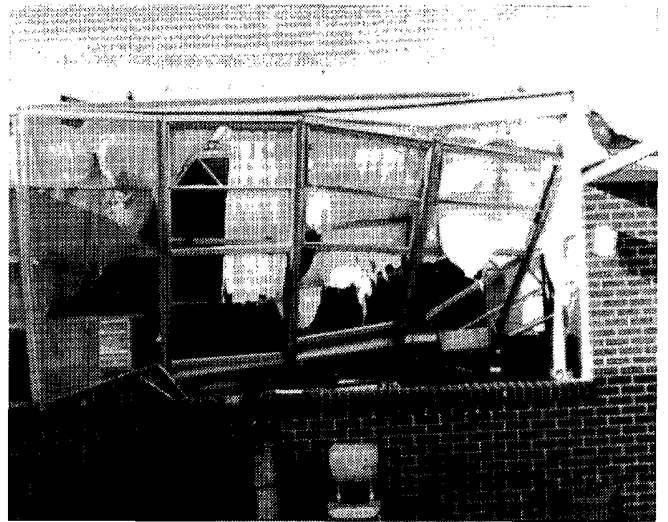


Additional aerial views of the Northeast Jones High School's gymnasium and shop building (above) and two classroom wings (right). The views are north-northeast and west, respectively.
---Both photos (UC).

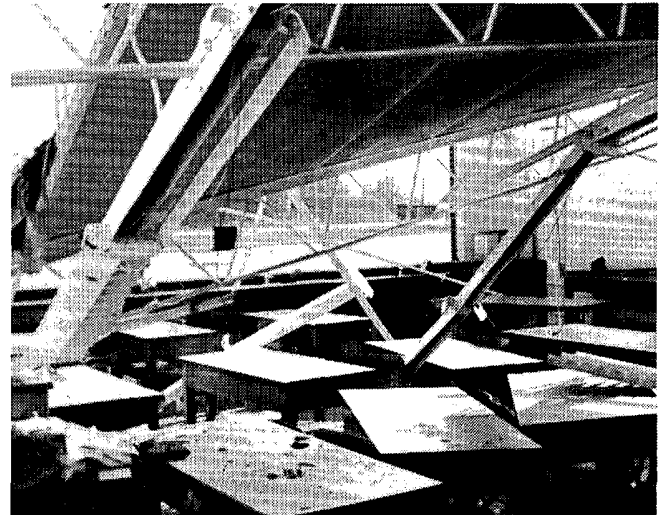
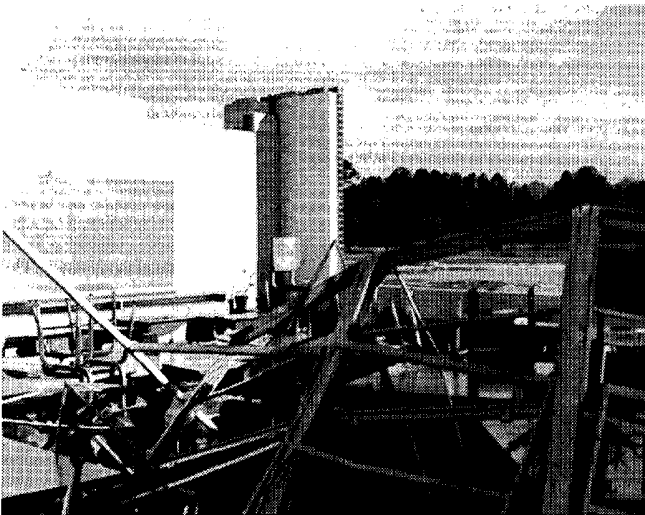


TORNADO near LAUREL, MISSISSIPPI ---- continued

Ground-level views below depict in better detail the type of damage sustained by the Northeast Jones High School. ---All six photos (NWS).



The south wall of the school's north wing (left) and the blown-in windows of the first classroom at the southwest corner of the south wing (right).



Outward views of classrooms on the south side of the school's south wing.

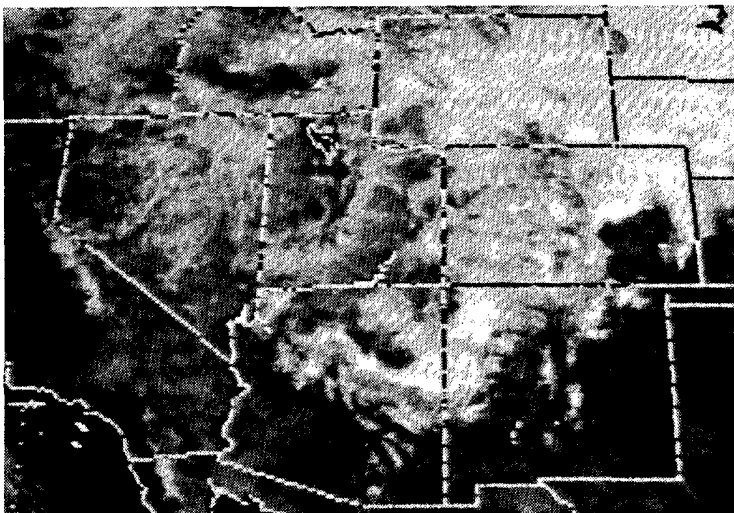
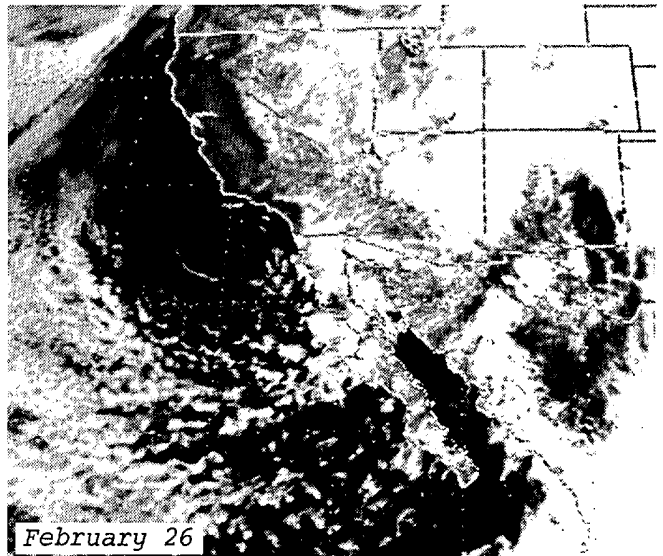
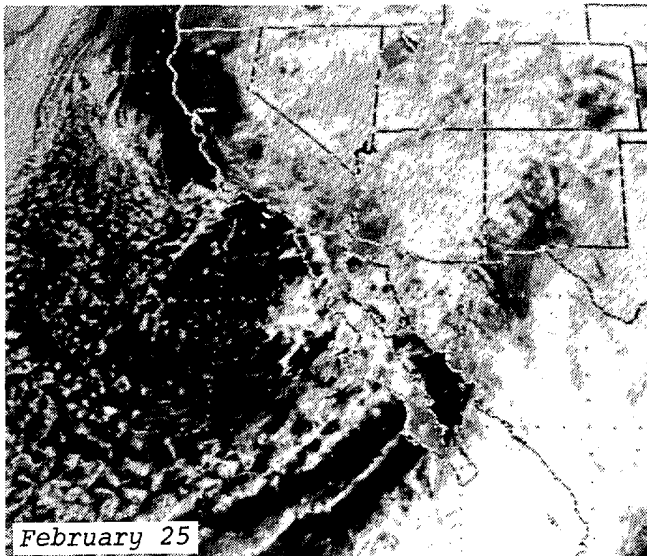
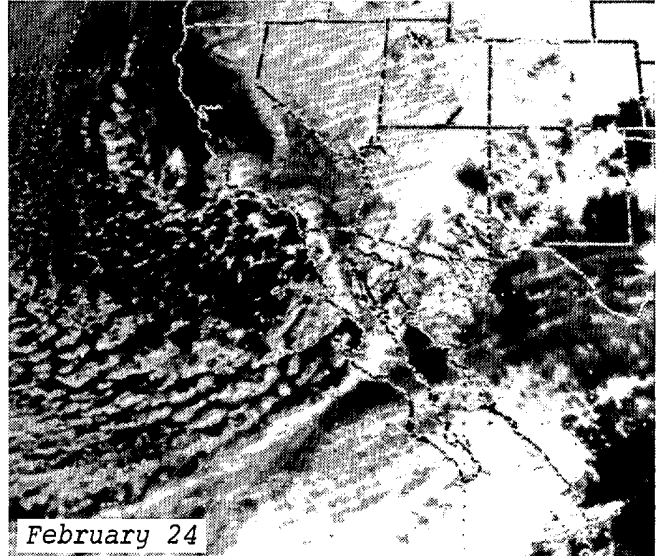
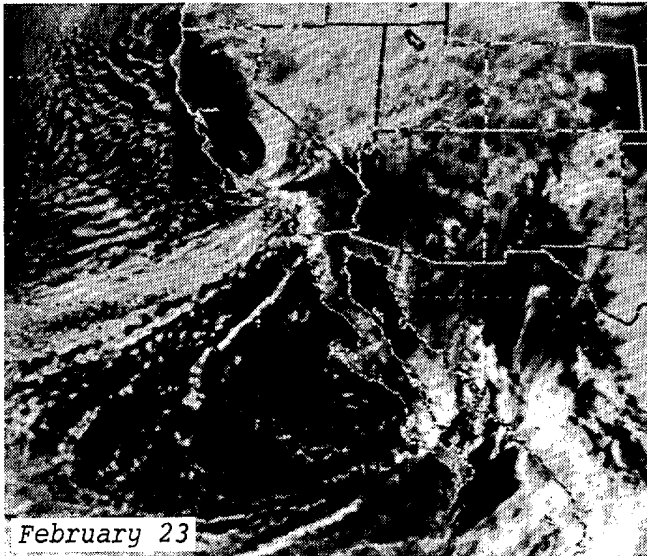


The east end of the hallway of the north wing (left) and the south end of the gymnasium, which collapsed inward, as viewed from inside (right).

---Photos on pages 10 through 17 by: (UC) Duane J. Stiegler, University of Chicago; and (NWS) members of the NWSFO at Jackson, MS. (NWS) photos supplied by David Imy.

2. SNOWSTORM in the WESTERN U.S. on February 23-27, 1987

During the last week of February, a major winter storm settled in and loitered over the southern Rocky Mountains of the Western U.S., dumping heavy snow throughout the region from the 23rd through the 27th. High elevations received the largest amounts while lesser amounts accumulated in the valleys. For some it was the heaviest snowfall that had been seen in many years. The storm's effects were best manifest in significant transportation delays, as large accumulations and drifting warranted the closing of most roads, especially through passes where alternate routes are unavailable.



ABOVE: Four GOES 6 satellite, visible images show the almost stationary storm system in the Southwest at 1030PST on February 23rd through 26th. Note from the cloud patterns that ample Pacific moisture was supplied to the system by way of Mexico.

LEFT: An additional satellite image taken on the 28th reveals the snow-cover left by the storm after it had moved out of the region.

---All satellite photos provided by NESDIS.

SNOWSTORM in the WESTERN U.S. ---- continued

Some of the largest amounts of snowfall reported were: 62 inches at Purgatory, CO; 43 inches at Fairplay, CO; 35 inches at Williams, AZ; 31 inches at Flagstaff, AZ; 26 inches at Lander, WY; and 20 inches at Daggett Pass, NV. Photos from the Flagstaff area taken on February 24th follow:

Truck drivers head for cover and warmth (right) while their rigs stand idle (below) at the Little America Truck Stop on Interstate 40 in Flagstaff. About 250 trucks waited out the storm at the station due to the closure of Interstate 40 from Ash Fork to Winslow. ---Both photos by Brian Winter, The Arizona Daily Sun.



RIGHT: A typical Flagstaff street where residents spent the morning of the 24th digging out of the snow. ---Photo by Brian Winter, The Arizona Daily Sun.

SNOWSTORM in the WESTERN U.S. ---- continued



A resident clears the previous night's snow from his driveway (left) and a Northern Arizona University student skis her way to class, although the school was officially closed later in the day. ---Both photos by Brian Winter, The Arizona Daily Sun.

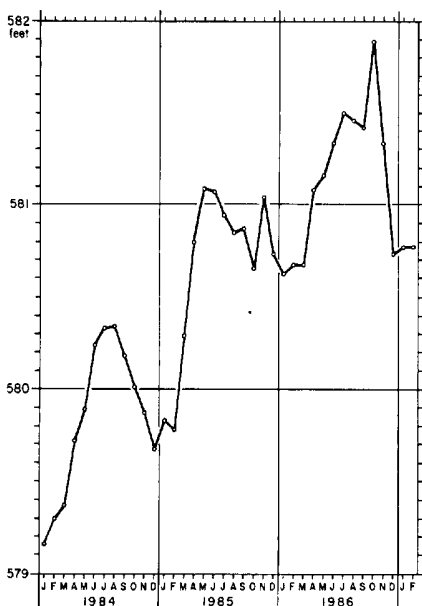
3. HIGH WAVES and EROSION at CHICAGO, ILLINOIS on February 8, 1987

On February 8th, 50 to 70 mph north and northeast winds whipped the already dangerously high waters of Lake Michigan into 12 to 18 foot waves that crashed into Chicago's shoreline and caused 7 million dollars in flood and erosion damage. Damage included 28 miles of shoreline parks, the lower levels of several lakeside highrises, and one of the city's primary transportation arteries, Lake Shore Drive.

RIGHT: Undeterred from the use of their lakefront parks, Chicagoans battle the wind and spray as Hawaiian-style waves crash ashore. ---Both photos by Al Podgorski, The Chicago Sun-Times, copyright 1987.



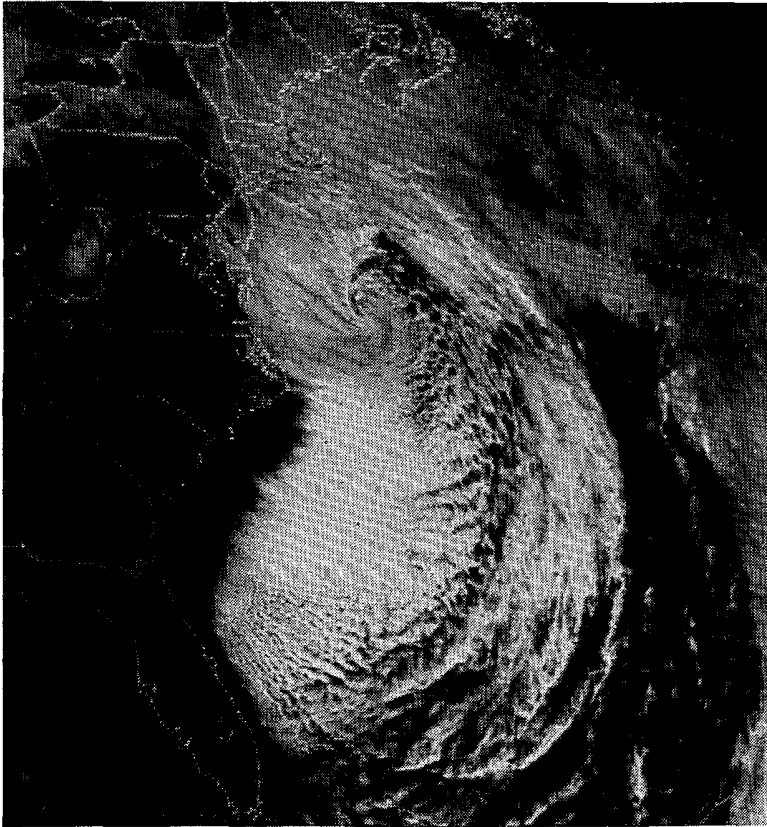
AVERAGE MONTHLY LAKE MICHIGAN WATER LEVEL ABOVE MEAN SEA LEVEL AT MILWAUKEE, WISCONSIN



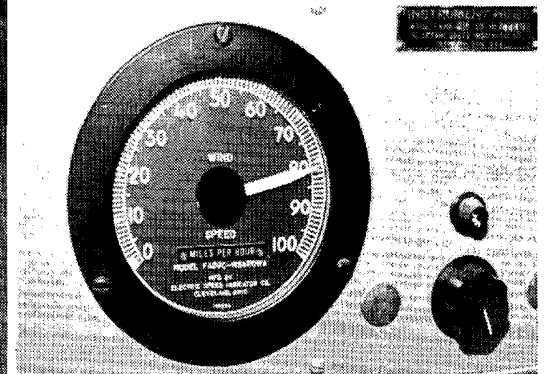
LEFT: The rise in Lake Michigan's level over the past three years. ---Figure from and photos provided by Richard Koeneman, NWSFO at Chicago, Illinois.

4. HIGH WINDS in the APPALACHIANS on February 8-9, 1987

Late on February 8th and early on the 9th, strong northwesterly winds gusting to 65 mph swept through the southern Appalachians and areas east to the Atlantic in the wake of a cold frontal passage that was associated with the same fast-moving storm responsible for the high waves on Lake Michigan near Chicago earlier in the day. Some higher mountains and ridges experienced gusts of 85 to 100 mph. Most damage was minor but widespread, and included mainly the usual downed trees and power lines. The storm also dumped heavy snow over West Virginia and western Pennsylvania, and over Cape Cod as well on the 9th and 10th.



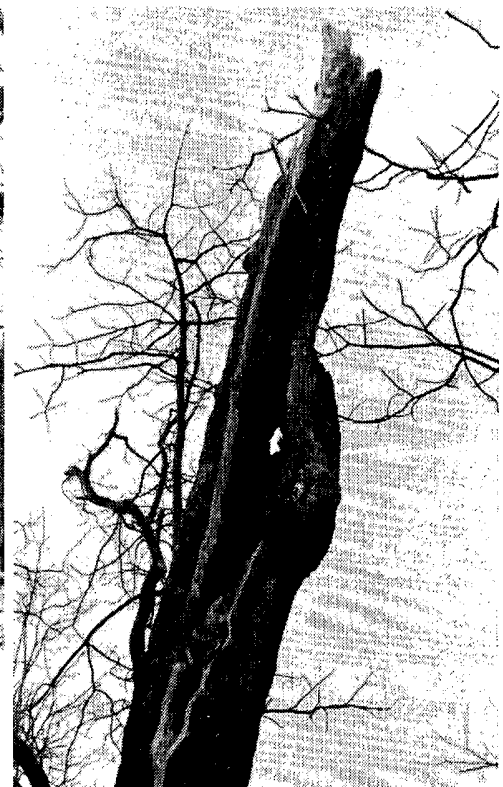
LEFT: A GOES 6 satellite, visible image of the storm's spiraling comma cloud at 1430EST on February 9th, as it exited the U.S. and moved into the Atlantic. Note the marked snowcover in West Virginia. ---Photo from NESDIS.



A windspeed indicator at Flat Top Mountain, NC (elevation 4,320 feet) showing a speed of nearly 82 mph at 2053EST on February 8th. A peak gust of 85 mph was reached only 3 seconds after the photo was taken.

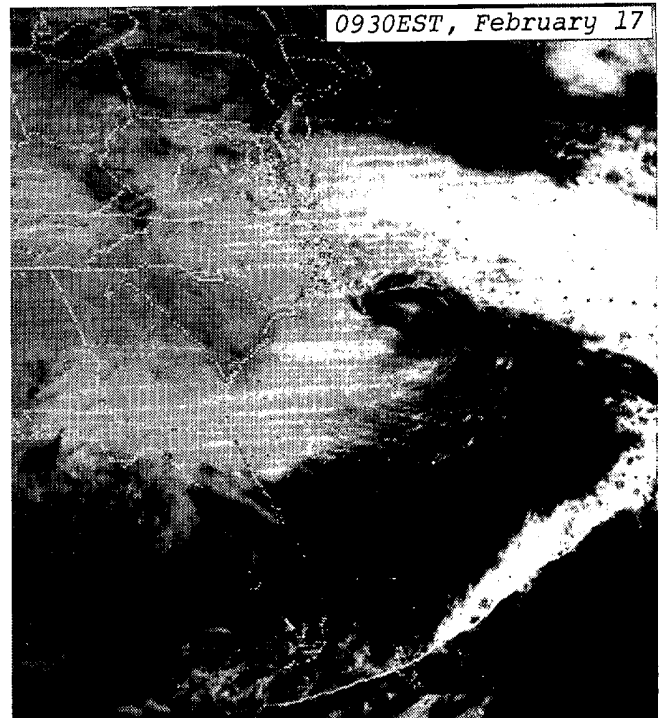
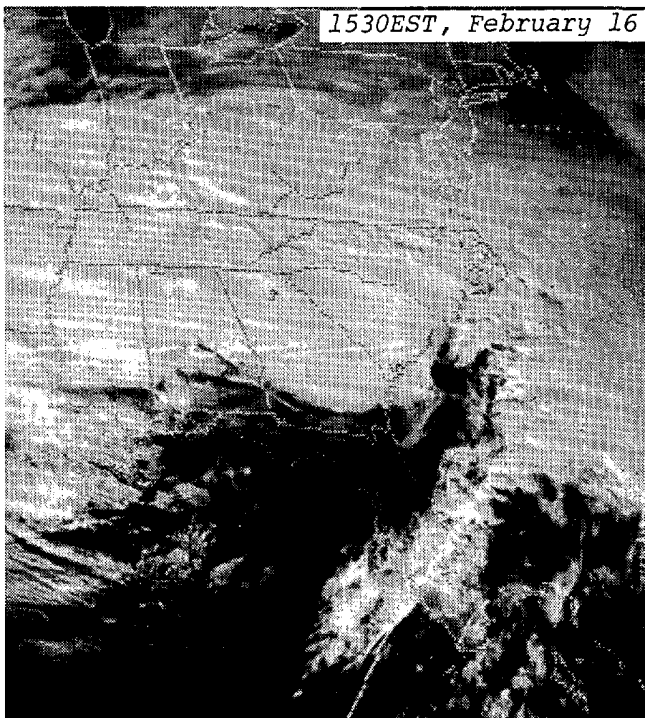
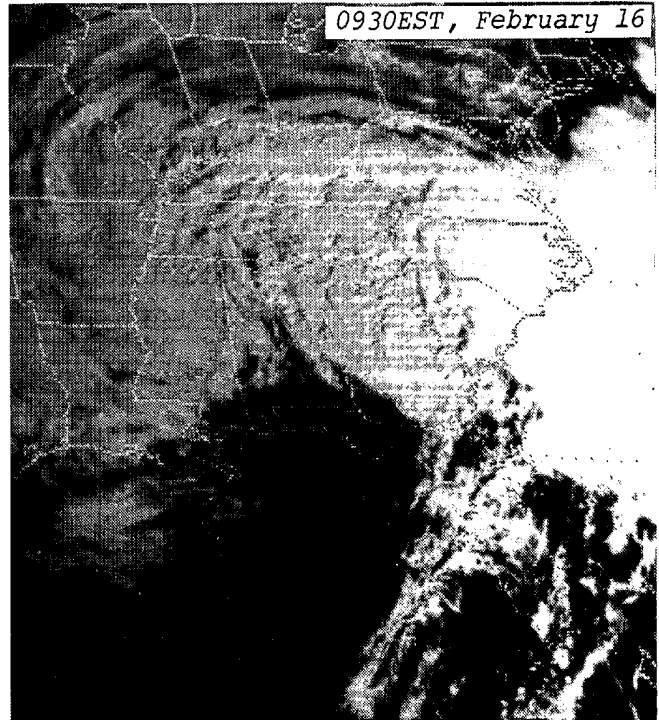
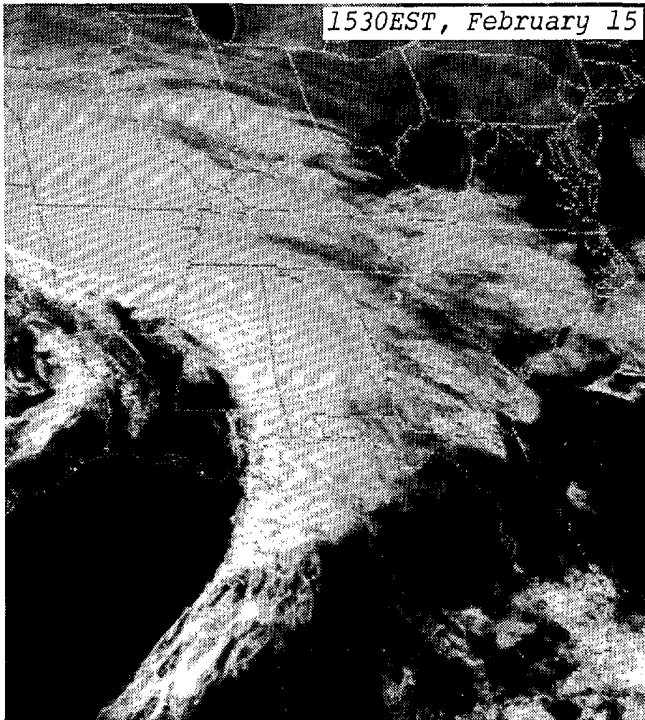


ABOVE and RIGHT: A large oak tree snapped off by the peak gust at the Flat Top Mountain site, 9 miles ESE of Asheville. ---Indicator and tree photos by Grant W. Goodge, NCDC, Asheville, NC.



5. ICE STORM in the EAST-CENTRAL U.S. on February 16-17, 1987

Freezing rain and sleet had spread across a large portion of the East-Central U.S. as a major winter storm trekked eastward through the region on February 16th and 17th. The precipitation created ice accretions from a mere glazing to as thick as 3 inches and sleet accumulations of up to 6 inches deep through much of Kentucky, West Virginia, Virginia, North Carolina and South Carolina. For many it was the worst ice storm in several years as trees and power lines downed by the weight of ice resulted in record-breaking power outages in terms of both extent and duration. Parts of south-central Kentucky incurred widespread power failures that lasted 3 days, the like of which had not been experienced there in at least 35 years. Throughout the multi-state area, thousands of traffic accidents on ice-slickened roads were also attributed to the storm.

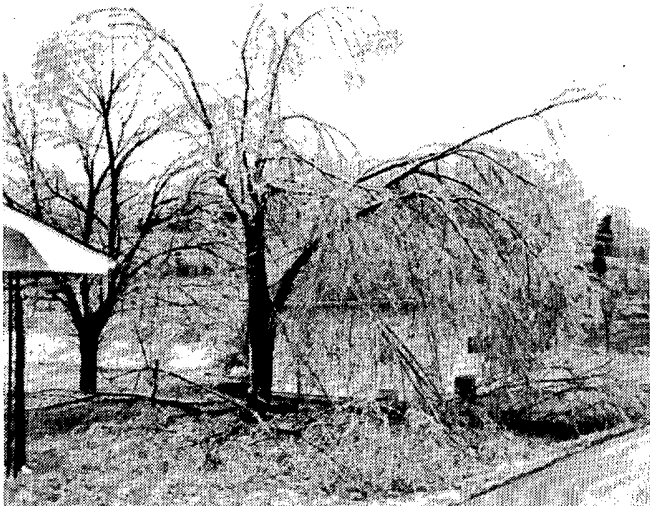


GOES 6 satellite, visible images show the broad cloud system of the ice storm as it traversed the East-Central U.S. from west to east on February 15th through the 17th. ---Photos from NESDIS.

ICE STORM in the EAST-CENTRAL U.S. ---- continued



The weight of ice buildup resulting from the freezing rain in Russell County, Kentucky was too much for this tree located in Russell Springs. Area residents claimed that the ice storm was the worst they had had in the past 12 years. ---Photo by Eric West, The Russell County News.



CLOCKWISE FROM ABOVE: Remaining branches of a Chinese Elm in Mohawk, Kentucky droop under the weight of an icy coating to which some had already succumb; ice-laden branches fill the back yard and deck of a home also in Mohawk; and electric company workmen use chain saws to cut ice-covered tree limbs and remove them from power lines in Brownsville, Kentucky. All three locations are in Edmonson County of south-central Kentucky. Sixteen thousand people in the region remained without power for 3 days. ---Top photos by Bill Canty and right photo by Tim Miller, both of the Edmonson County News.



---All above photos supplied by Beverly Poole, NWSFO at Louisville, Kentucky.

6. ICE STORM in WESTERN NORTH CAROLINA on February 27-28, 1987

Another ice storm, more localized than its predecessor on February 16th and 17th, struck mountain areas of western North Carolina during the last two days of the month. Ice accumulation downed trees and power lines at elevations generally above 4000 feet, especially on east- and northeast-facing slopes. The storm also produced snow through this and the central portion of the state on the 27th, and initiated flooding which began on the 28th in some western counties of the state.



All six photos above are of tree and power line damage sustained in the Wolf Laurel area of western North Carolina, about 25 miles north of Asheville. The photos were taken in terrain that ranged between 4600 and 5000 feet in elevation. ---Photos by Emmet Williams, Wolf Laurel, NC; and supplied by Grant W. Godge, National Climatic Data Center, Asheville, NC.

STORM DATA AND UNUSUAL WEATHER PHENOMENA

FEBRUARY 1987

PLACE	DATE	TIME - LOCAL STANDARD	LENGTH OF PATH (MILES)	WIDTH OF PATH (YARDS)	NO. OF PERSONS		ESTIMATED DAMAGE		CHARACTER OF STORM
					KILLED	INJURED	PROPERTY	CROPS	
1 ALABAMA									
Greensboro area, Hale Co.	02	0145CST			0	0	4	0	TSTM Wind
			Thunderstorm winds destroyed some storage sheds and small hangars at the Greensboro Airport and damaged the roofs of two commercial buildings in Greensboro.						
Marion area, Perry Co.	02	0200CST			0	1	5	?	TSTM Wind
			One person was injured when a mobile home was destroyed west of Marion, and four houses in the area sustained roof damage. Two other homes were damaged about one mile east as the storm moved on into Marion a few minutes later. A 107-year-old redwood tree, reported to have been transplanted from California in 1880, and the largest redwood east of the Mississippi, was among the trees that were uprooted in the Marion area. Other damage included an aircraft hangar destroyed 9 miles SW of Marion. Damage in the area was estimated at more than \$150,000.						
Montgomery area, Montgomery Co.	02	0315CST			0	0	4	0	TSTM Wind
			Thunderstorm winds downed a few trees and one home was damaged by a falling tree.						
Enterprise area, Coffee Co.	02	0530CST			0	0	3	0	TSTM Wind
			One car was damaged when thunderstorm winds blew the windows out of a new car showroom. Minor roof damage to several buildings was also reported.						
Alma, Clarke Co.	15	1430CST			0	0	4	0	TSTM Wind
			Thunderstorm winds damaged the roof and porch of a home and also damaged some outbuildings.						
Lamar Co.	15	1645CST			0	0	4	0	TSTM Wind
			Thunderstorm winds blew the roof off a grocery store west of Vernon.						
Perry Co.	15	1702CST			0	0	3	0	TSTM Wind
	15	1719CST			0	0	4	0	TSTM Wind
			Thunderstorm winds snapped at least two powerline poles in Marion around 1702CST and destroyed an unoccupied mobile home east of Marion around 1719CST. A tree was blown across a car that was traveling along a nearby county road, but the occupants were not injured.						
Cullman Co.	15	1850CST			0	0	3	0	TSTM Wind
Limestone Co.	15	1950CST			0	0	4	0	TSTM Wind
Lawrence Co.	15	1950CST			0	0	?	?	TSTM Wind
Morgan Co.	15	2020CST			0	0	4	0	TSTM Wind
Madison Co.	15	2040CST			0	0	5	0	TSTM Wind (G60)
Browah Co.	15	2050CST			0	0	4	0	TSTM Wind
Jackson Co.	15	2100CST			0	0	2	0	TSTM Wind
			Winds from a band of thunderstorms and an intense low pressure center downed some trees and powerlines. In addition to downed trees and powerlines, damage included the backwall blown out of a church that was under construction in Huntsville and an outbuilding destroyed in Hartselle. Roof damage to other buildings was reported in Madison and Morgan counties where signs and other debris were blown into vehicles. Winds gusted to 60 mph at the NWS at the Huntsville/Madison County Airport at 2040CST. The roof was torn from a home in Gadsden and heavy rains caused extensive water damage to the contents of the home.						
Montgomery area, Montgomery Co.	15	1900CST			0	0	2	0	TSTM Wind
			Thunderstorm winds downed one large tree and some large tree limbs on a college campus.						
Talladega area, Talladega Co.	15	1930CST			0	0	4	0	Lightning
			An intense lightning strike shattered sections of a 4-inch-concrete driveway, damaged the wiring in a residence and started a fire that destroyed an outbuilding.						
Mobile Co.	28	0957CST			0	0	2	0	TSTM Wind
			Winds gusted to 61 mph at the NWS Office at Bates Field in Mobile. Winds estimated at near 60 mph were reported in Citronelle at 1007CST with some trees down in the area.						
2N Daphne, Baldwin Co.	28	1035CST			0	0	2	0	TSTM Wind
			Thunderstorm winds downed some trees.						
2 ARIZONA									
Coconino County	14	0140 MST			0	0	5	0	High winds
			The southern part of Fredonia had very strong winds, with residential areas receiving the most damage. Solar panels, air-conditioners, and signs were blown away. Trees were uprooted. The National Guard trailer was demolished as was a storage building.						
Coconino County	14	0245 MST			0	0	5	0	High winds
			A cold front moved rapidly through northern Arizona, producing a peak wind gust of 74 mph at the Roadclub near Lake Powell. A Cessna 182 was destroyed at the Page airport. Only .04 inch of rain accompanied the wind.						
AZZ004-005-006	23-26				1	0	4	0	Heavy snow
			The heaviest snowfall in many years hit northern and central Arizona. Flagstaff had a storm total of 31.2 inches, and 23.1 inches in a 24 hour period. Numerous traffic accidents were reported. The body of an 89-year-old woman was found under a snowdrift. Williams had a total of 35 inches. The Governor declared 5 counties as disaster areas because of the snow and drifts up to 4 feet deep in some places. At one time on the 24th, 22 inches covered the ground in Prescott. Veteran weather watchers considered this storm the heaviest in Prescott since the infamous winter of December 1967. Heavy rains and high winds struck the metropolitan Phoenix area. Rainfall of about 2 inches was observed in most parts of the city. Power poles were knocked down, resulting in several power outages. There were numerous road closures. F890						
Pinal County	26	1515 MST			0	0	0	0	Funnel cloud
			A pilot reported a funnel cloud south of Williams AFB.						
Maricopa County	26	1630 MST			0	0	0	0	Funnel clouds
			Funnel clouds were sighted at Williams AFB and Tempe.						
3 ARKANSAS									
Greene County	13	2320CST			0	0	-	-	Hail (1.75")
			A sheriff's deputy reported golfball-size hail at Stanford.						
Ouachita County	15	0500CST			0	0	4	-	Lightning
			Lightning started a fire at a storage shed which housed a pickup truck, a camper, and a bass boat. The structure and contents were destroyed in Camden.						
Lee County	15	1545CST			0	0	?	-	Thunderstorm Wind
			Wind gusts accompanying thunderstorms tore off roofing shingles and knocked down trees at Aubrey and Moro.						
Ashley County	27	1910CST			0	0	-	-	Flash Flooding
			Heavy rain caused water to build up to 2 feet in depth over some roads in Crossett. Other areas of the county also had minor flooding of roadways. Some of those areas were Milo, Hamburg, and West Crossett.						
Drew County	27	1936CST			0	0	?	-	Flash Flooding
			Heavy rains over the county caused a washout of a bridge along the northern section of the county near the Lincoln county line.						
Desha County	27	2010CST			0	0	-	-	Flash Flooding
			Heavy rain caused urban flooding of low-lying areas in Dumas.						
Lincoln County	27	2025CST			0	0	-	-	Flash Flooding
			Heavy rains caused minor street flooding in Star City and Gould, according to reports received through the State Police in Dumas.						

STORM DATA AND UNUSUAL WEATHER PHENOMENA

FEBRUARY 1987

PLACE	DATE	TIME - LOCAL STANDARD	LENGTH OF PATH (MILES)	WIDTH OF PATH (YARDS)	NO. OF PERSONS				ESTIMATED DAMAGE		CHARACTER OF STORM
					KILLED	INJURED	PROPERTY	CROPS	PROPERTY	CROPS	
— ARKANSAS											
White County	28	1800CST			3	1	4	-			Flash Flooding
			Heavy rains caused Glaise Creek to rise. Water was between 2 and 3 feet deep over the bridge on County Road #74 (5 miles northeast of Bald Knob) in the Russell bottoms area. A man and his 3 sons were travelling in a small pickup truck and attempted to cross the flooded bridge. The truck was swept off. The father and the two older boys drowned. The 9-year-old boy received minor scratches and was rescued by two passersby.								
All of Arkansas	28	All day			0	3	5	?			High Wind
			On Friday, February 27, a developing, low pressure center pushed abundant rainfall across Arkansas. This rainfall soaked the ground well, setting up poor anchoring conditions for trees, signs, and fence posts. The low center intensified as it moved northeast through Oklahoma and Missouri on Saturday, February 28. The resulting pressure pattern caused windy conditions statewide. Strong winds and gustiness caused widespread damage. Trees were blown down onto homes, cars, and fences. Many structures had roof damage. Signs were blown down and bent, especially traffic signs. Many power outages resulted from the falling trees and limbs. Some of the strongest gusts measured were: North Little Rock Airport 50 MPH Little Rock Adams Field 48 MPH El Dorado 46 MPH Fort Smith 53 MPH Texarkana 48 MPH Jonesboro 69 MPH The strong winds continued after dark but subsided below damaging levels by midnight. A man was injured by a branch as a tree fell in Pine Bluff. He suffered a broken nose. About 1430 CST, a car was blown off U. S. Highway 82, 4 miles east of Texarkana, causing minor injuries to the 2 occupants. Other damages across the state included interruption of cable TV service. Mobile homes were blown off their foundations. A camper shell was blown off the bed of a pickup truck. Several vehicles were blown off roadways without causing injuries. Awnings were blown down, and windows were broken. Parked airplanes were damaged. Radio transmitter towers and other antennas were knocked down. A train ran into power poles and live electrical wires which were down across the railroad tracks.								
4 CALIFORNIA, Northern											
CAZ002-006-007	13	0600 PST									Rain, Flooding
			A slow-moving cold front saturated with subtropical moisture spread heavy rains and localized flooding into the San Francisco Bay Area and the Sacramento Valley. 24-hour rainfall amounts ranged from 4 to 6 inches in Marin and Shasta Counties to between 2 and 3 inches over much of the Bay Area. Minor flooding of roads and small streams was reported.								
CAZ009-010	13	1000 PST- 14 1000 PST									Heavy Snow
			Snowfall amounts totaled as much as 30 inches at Mammoth Mountain and Tuolumne Meadows, with as much as one to two feet common over the remainder of the Sierra Nevada at the 7000-foot level. This was the heaviest snowfall of the season.								
CAZ009-010	23	0600 PST- 24 0600 PST									Snowstorm
			One to two feet of snow fell over much of the Sierra Nevada as a very cold upper low from the Gulf of Alaska dropped southward over California. Snow levels fell to as low as 500 feet with some flurries down to near sea level.								
Monterey County (1/2mi west of Point Sur)	24	1130 PST									Waterspouts
			A cold low aloft triggered widespread thunderstorms over Northern and Central California. There were multiple (5 unconfirmed) waterspouts observed just west of the Pt. Sur lighthouse over the relatively warm waters of the Pacific Ocean.								
4 CALIFORNIA, Southern											
Mono County, Owens Valley (Crowley Lake and Mammoth Lakes area)	02	1130PST			0	0	?	0			High Winds
			Winds throughout the Owens Valley were gusting in excess of 50 mph; winds of up to 85 mph were reported by several spotters and the Highway Patrol.								
Tehachapi Mountains	06	1107PST			0	0	?	0			High Winds
			Winds of from 40 to 55 mph over the passes of the Tehachapis were reported. Later in the day, the winds increased and spread throughout the mountains and into San Diego County. The winds diminished to near 40 mph by 2045PST of the same day.								
All Area Mountains	16	0430PST			0	0	?	0			High Winds
			Sustained winds of 20 to 25 mph with gusts to 50 mph in the Santa Monica Mountains were reported, and winds in all of the mountains warranted travelers advisories. The winds extended offshore where they gusted to 35 mph.								
Areawide	16	0850PST			0	0	?	0			High Winds
			High winds were reported throughout Southern California. Reports were as follows: Mount Laguna 70 mph Point Mugu 30 mph El Toro 40 mph Chino 40 mph								
San Bernardino County	22	0500PST			0	?	?	0			Winter Storm
			Heavy snow and slippery conditions necessitated the closing of Route 2 between Islip Saddle and Big Pines, south of the San Gabriel and San Bernardino Mountains.								
All areas of Southern California	24	0630PST			0	?	?	?			Winter Storm
			An intense winter storm brought a cold arctic airmass over the region. During the two day period there were reports of snow, record low temperatures, hail, funnel clouds and waterspouts, as well as rainfall. Snow pellets also fell along the coastal areas of Orange and San Diego counties. Huntington Beach reported "snowcover" of from 2 to 3 inches. Due to the small hail, some of the fleshy crops sustained damage. An early estimate of the damage indicated that the price of strawberries would double. There was little damage to the heartier fruits. By 1800PST of the 24th, snowfall in the mountains closed roads. Most stations reported snow in excess of one foot. Some amounts were as follows: Big Bear.....17 inches Cuyamaca.....16 inches Julian.....12 inches At 2200PST of the same day, Interstate 5 was closed north of Los Angeles near Lebec. California Highway Patrol officers set up a series of convoys to assist motorists over the pass. The storm left 6 inches of snow on the ground in the area. The freezing level was near 1500 feet.								
San Diego County	25	1330PST			0	?	?	0			Waterspouts and Funnel Clouds
			The winter storm that brought cold air over the region produced funnel clouds and several strong waterspouts. In Coronado Cays a 30-foot cruiser was lifted into the air and dropped onto a dock. There were several reports of large debris and objects being lifted from the water's surface and carried for extended distances, including an 8-foot-long dinghy.								
5 COLORADO											
Mountains and Eastern Foothills COZ002-004-008-010-011-015	13-14				0	0	0	0			Heavy Snow
			12 to 18 inches of snow buried the southern mountains. Telluride had even more, with 27 inches of fresh powder. The storm left 6 to 12 inches of snow at most spots in the northern and central mountains. Some foothill towns were also hit with heavy snow. 13 inches fell at Rye, near Pueblo; and Nederland, west of Boulder, recorded 10 1/2 inches.								

STORM DATA AND UNUSUAL WEATHER PHENOMENA

FEBRUARY 1987

PLACE	DATE	TIME - LOCAL STANDARD	LENGTH OF PATH (MILES)	WIDTH OF PATH (YARDS)	NO. OF PERSONS				ESTIMATED DAMAGE		CHARACTER OF STORM
					KILLED	INJURED	PROPERTY	CROPS	PROPERTY	CROPS	
COLORADO											
Eastern Foothills CO2011-014-015	18-20				0	0	0	0			Heavy snow A snowstorm brought large amounts of new snow to the eastern foothills. Most of the snow fell on the 19th. The greatest amount reported was 28 inches at Echo Lake, near Mount Evans in Clear Creek County. Many other spots in the foothills had 10 to 20 inches, with the heaviest amounts mostly from the Palmer Divide northward. 3 to 12 inches of snow fell in the mountains, with 4 to 8 inches on the plains just east of the foothills from Colorado Springs northward. Schools were closed in the foothills west of Boulder, and there were delays at the airports in Colorado Springs and Denver on the 19th.
Statewide	24-27				0	1	?	0			Heavy snow A slow-moving storm dumped snow over the entire state. Snowfall totals were exceptionally large in the southern mountains; 2 to 5 feet fell there. Purgatory ski area led the way with 62 inches; 24 inches fell there in 24 hours. 1 to 2 feet of snow fell in the central mountains except in South Park, where 43 inches buried Fairplay. Winds whipped the snow into 8 to 10 foot drifts and closed almost all highways in South Park. High valleys in the south-central and southwestern part of Colorado were buried. 25 to 30 inches of snow fell at both Salida and Durango. A jet slid off the airport runway in Durango during the height of the storm; there were no injuries. At lower elevations, Colorado Springs bore the brunt of the storm. 14 to 20 inches of snow fell there, mostly on the 26th. 14.8 inches fell at the Colorado Springs airport in 24 hours, a record for February. The airport and most schools in the area were closed. Another hard hit area was extreme northeastern Colorado where about a foot of snow fell, closing roads and schools in Weld and Morgan counties. The storm dropped 4 to 8 inches of snow along the Front Range, causing flight delays of up to 2 hours at Denver's Stapleton Airport. Interstates 70 and 25 were closed for a time on the 26th east and south of Denver. The heavy snowfall triggered many avalanches in the mountains. For all the problems caused by the storm, only one casualty was reported. A man was slightly injured in Colorado Springs when a snow-laden porch roof collapsed on him.
6 CONNECTICUT — NONE REPORTED											
7 DELAWARE											
DEZ001-002 Southern Delaware	08 2000EST				0	?	4	0			Heavy Snow Precipitation began as rain and freezing rain on Sunday evening and changed to snow by 10 pm (2200EST). Four to 8 inches of snow accumulated and winds peaked at 40 mph or more by morning. The governor declared a limited state of emergency as drifting snow and poor visibility made for difficult driving. Skies cleared by early afternoon. Two women were killed in auto accidents, one near Wilmington and another in Cecil County. Wind chill temperatures dropped to below zero on Monday.
DEZ002-003 Northern Delaware	22 2000EST				1	?	6	0			Heavy Snow Heavy wet snow began by early evening. Amounts averaged 12 to 18 inches in New Castle County and 6 to 12 inches in Kent County. Power outages were widespread; 20,000 homes were without power in New Castle County. Many of the outages were caused by downed trees, especially pines. Many minor traffic accidents also occurred, but none were fatal.
8 FLORIDA											
Bay County, Panama City	22 1157CST				0	0	4	0			Lightning Lightning started a fire which destroyed an unoccupied building.
Bay County, Panama City	22 1215CST				0	0	5	0			Lightning Lightning started a fire which destroyed a grocery store and another building.
Alachua County, Alachua	22 1720EST				0	0	3	0			TSTM Wind (55) A thunderstorm wind gust damaged a mobile home and downed several trees and power lines.
9 GEORGIA											
Cobb County	28 1946EST				1	0	5	0			Lightning Lightning caused a fire that heavily damaged an apartment building in Austell. A sixteen-month-old boy died in the fire. MFP
10 IDAHO											
ID2009 Bonner County, Sandpoint	01 morning				0	0	4	0			Snow and High Wind Heavy rain turned a recent snowfall into a quagmire of slush which snapped heavy snow-laden power lines. Then winds estimated at up to 40 mph took over, knocking down trees and more power lines.
ID2007 Sun Valley area	13 all day				0	0	0	0			Heavy Snow A foot of snow fell at Sun Valley's Bald Mountain.
ID2003 Upper Snake River Basin	13 1730MST				0	0	0	0			Thunderstorm Wind A thunderstorm produced 40 to 50 mph winds in the Upper Snake River Plain. A peak wind gust of 50 knots occurred at the Idaho Falls Airport. No reports of damage were received.
ID2002-003	24- night 25				0	0	0	0			Heavy Snow Five inches of snow fell at Rexburg and four inches at Jerome. Twin Falls received three inches.
11 ILLINOIS											
IL2002 Lake and Cook County Shorelines	08 0700- 2300CST				0	0	7	0			High Wind and Lakeshore Erosion Sustained north and northeast winds of 50 to 70mph over the open waters of Lake Michigan generated waves 12 to 18 feet in height for a 15-hour period. The high waves, coupled with existing high water levels in the lake, exacerbated shoreline erosion and flooding, problems which have been increasingly recurrent as the lake level has risen during the last two years. In addition to savage wave action, storm force northerly winds caused water to pile up against the southern shores of Lake Michigan into a "storm surge" phenomenon which, in this instance, caused the lake level to rise two feet at the height of the storm. Finally, a mild winter had left no ice shelf along the shoreline to cushion the blow of waves. The result was the single-most extensive and costly shoreline erosion/flood event in Chicago's history. Erosion damage to waterfront facilities amounted to 7 million dollars. Hardest hit were 28 miles of shoreline parkland. Damage included: gaps in shoreline seawalls; undermined and collapsed roads, driveways, and sidewalks; damaged recreational facilities (golf courses, tennis courts, etc); beaches, parks, and roads littered with boulders (some up to 6 feet in diameter), mud and other debris; damaged and flooded lakefront highrise buildings; flooded basements and underground parking garages; and flooded automobiles. Lake Shore Drive, a major north-south artery, was flooded at many locations on the north and south sides of the city. When wind and waves finally subsided, miles of the drive were littered with rocks and sand. Caravans of detoured automobiles and buses jammed inland roads. While assessing damage in the aftermath of Lake Michigan's awesome display of fresh-water fury, engineers noted that eroded shoreline-protective facilities such as smashed seawalls and eroded beaches now leave Chicago's lakefront more vulnerable to additional damage from future storms.
IL2ALL Entire State	08 0700- 2000CST				0	0	5	0			High Wind Forty to 50mph sustained winds, with occasional gusts to 70mph, caused widespread damage statewide. Broken tree limbs brought down power lines, resulting in power outages that affected 75,000 people for one to 7 hours. Toppled signs and billboards were common. A 100-foot-tall billboard crashed onto the Tri-State Tollway at 94th Street on Chicago's south side. Roof damage was widespread, metal sheds were blown around, and many buildings under construction sustained significant damage. Grain elevators were damaged, and many private radio antennas collapsed.
IL2005-006-007-008- 009-010-011-012- 013 and IA2007-012 Southern and Central Illinois	16				1	0	4	0			High Wind and Ice Storm Winds of 30 to 50mph accompanied freezing rain, sleet and snow to put much of central and south Illinois into an icy grip. Over 1000 automobile accidents were recorded. A 76-year-old man died from exposure, 3 1/2 of Russellville (Lawrence County), when his car stalled on an ice-covered road and he attempted to walk for help. M760
IL2010-011-012-013 Southern Illinois	28 1700- 2100CST				0	0	4	0			High Wind Thirty to 50mph winds buffeted the south third of Illinois, causing minor damage.

STORM DATA AND UNUSUAL WEATHER PHENOMENA

FEBRUARY 1987

PLACE	DATE	TIME - LOCAL STANDARD	LENGTH OF PATH (MILES)	WIDTH OF PATH (YARDS)	NO. OF PERSONS				ESTIMATED DAMAGE		CHARACTER OF STORM
					KILLED	INURED	PROPERTY	CROPS	PROPERTY	CROPS	
12 INDIANA											
IN2001 through 010 and ILZ002 Northern and Central Indiana	08	0900 EST to 1600 EST			0	?	5	?			High Wind
<p>A winter storm system moved through the Midwest, bringing steady winds of 25 to 40 mph with gusts of 50 to 60 mph to northern and central Indiana. A gust of 58 mph was recorded at WSO South Bend at 1126 EST. Lake-effect snow generated by the strong, cold winds accumulated to 5½ inches at South Bend. Snow and blowing snow reduced visibilities to near zero in many locations near Lake Michigan. Most roads were ordered closed in St. Joseph and Laporte counties, where snow emergencies were declared. Many traffic accidents were reported, several with injuries. The strong winds caused 15-foot waves along the south and southwest shores of Lake Michigan, moving ice on shore, damaging buildings, and causing flooding. Although the snow was confined mostly to areas near Lake Michigan, the high winds occurred across all of northern and central Indiana. Some trees were uprooted and many power outages occurred. A man in the Indianapolis area reported that his house trailer was moved three inches off its foundation by the strong winds.</p>											
13 IOWA											
East Two-thirds of Iowa LAZ002-003-005-006-007-008-010-011-014 and ILZ003	07	Evening-08 Morning			0	0	4	0			High Winds
<p>Strong winds caused spotty damage over the east two-thirds of the state. Some power line damage was reported in the Mason City area. A tree fell onto a foot bridge in Ames and roof damage was reported at a farm supply store at Newell, in Buena Vista County. Strongest winds were reported at the Ottumwa Airport with a wind gust of 64 MPH. Des Moines recorded a wind gust of 59 MPH.</p>											
Southwest into Northeast Iowa LAZ002-003-006-007-008-009-010-012-013	28	Evening-01 Morning			0	0	4	0			Wet Snow
<p>A heavy wet snow fell over Southwest, Central, into Northeast Iowa. Some tree limb and power line damage occurred as the wet snow and winds of 25 to 40 MPH caused trees to blow over. Snowfall amounts were generally in the 3 to 6 inch range. There was one isolated report of 8 inches over extreme Northeast Iowa.</p>											
14 KANSAS ————— NONE REPORTED											
15 KENTUCKY											
Statewide	16	0000EST			0	0	5	0			Ice Storm
<p>A major ice storm moved into Kentucky around midnight and lasted through midday. Ice accumulated from one-fourth to one and one-half inches on trees, roads, and all other exposed objects. Many said it was the worst ice storm in the past 12 years. Schools and businesses were closed. Traffic was reduced to a crawl. There were hundreds of multiple vehicle accidents, many of which blocked and temporarily closed major roads and interstates.</p> <p>Power outages were widespread and long-lasting. In south-central Kentucky alone, sixteen thousand people were without power through February 19th. Power failure this extensive and wide-reaching had not occurred in the past 35 years. Sagging power lines, laden from the weight of the accumulated ice, snapped. The weight of the ice covering trees and branches, broke them and even uprooted trees in areas where the ground was moist. It was the falling trees and branches that took the power and utility lines down with them.</p> <p>The extended power outages hit the dairy farmers the hardest. There was no way to milk the cows with the power source cut off. Portable generators to power milking equipment were brought in by the Kentucky National Guardsmen. The counties of Marion, Hart, and Green were declared in states of emergency. The power generators were the only thing that helped avert a major crisis for the dairy farmer.</p> <p>Fallen debris from trees and power lines made many county roads impassable, preventing passage of emergency vehicles. The ice storm was followed by 1 to 3 inches of snow, atop the ice, on February 17th.</p>											
16 LOUISIANA											
Calcasieu Parish	15	0620CST			1	0	5	0			SVR TSTM-Wind(90)
Calcasieu Parish	15	0715CST			0	0	?	0			SVR TSTM-Wind(65)
Cameron Parish	15	0730CST			0	0	4	0			SVR TSTM-Wind
Jefferson Davis Parish	15	0800CST			0	0	?	?			SVR TSTM-Wind
Rapides Parish	15	0830CST			0	0	4	?			SVR TSTM-Wind(80)
Rapides Parish	15	0900CST			0	0	4	?			SVR TSTM-Wind(80)
Catahoula Parish	15	0900CST			0	0	?	?			SVR TSTM-Wind
Acadia Parish	15	0900CST			0	0	4	?			SVR TSTM-Wind
St. Landry Parish	15	0925CST			0	0	4	0			SVR TSTM-Wind
Concordia Parish	15	1030CST			0	0	?	0			SVR TSTM-Wind
Tensas Parish	15	1051CST			0	0	?	?			SVR TSTM-Wind
East Baton Rouge Parish	15	1110CST			0	0	?	?			SVR TSTM-Wind
Assumption Parish	15	1120CST	3.0	175	0	4	5	?			Tornado (F2)
St. John the Baptist Parish	15	1130CST	0.3	50	0	0	4	0			Tornado (F1)
Tangipahoa Parish	15	1200CST	3.5	150	0	3	5	?			Tornado (F2)
St. Tammany Parish	15	1245CST			0	0	?	?			SVR TSTM-Wind
St. Bernard Parish	15	1330CST	1.0	30	0	0	4	?			Tornado (F1)
St. Tammany Parish	15	1332CST			0	0	4	?			SVR TSTM-Wind
<p>A line of numerous thunderstorms moved rapidly across southern and south-central Louisiana between 0620CST-1332CST. There were numerous reports of straight-line wind damage and at least four tornadoes. A parish by parish summary follows.</p> <p>Calcasieu Parish: Straight-line winds ripped off the roof of a mobile home in a trailer park one mile south of Sulphur at 0620CST. A neighboring trailer was torn loose from its tie downs and turned over. The mobile home fell on top of its owner who died of injuries. Estimated damage was about \$50,000. In addition, several nearby homes lost part of their roofs to the storm. A marina northeast of the trailer park had about \$50,000 damage when wind broke plate glass windows, caused partial wall failure in a large metal-frame building, and blew nine outside boats into a pile. Finally, power lines were blown down in Lake Charles at 0715CST. P56M</p> <p>Cameron Parish: A severe thunderstorm damaged two mobile homes and destroyed a storage shed at SweetLake around 0730CST.</p> <p>Jefferson Davis Parish: Straight-line winds did major damage to two barns in Thornwall around 0800CST.</p> <p>Rapides Parish: Strong winds blew down a large oak tree, knocked out church windows, and tore off the roof from a building in Korin about 0830CST. By 0900CST several homes lost roofs and two mobile homes were overturned north and east of Pineville.</p> <p>Catahoula Parish: Numerous trees and power lines were blown down near Sicily Island about 0900CST.</p> <p>Acadia Parish: A severe thunderstorm blew one trailer into another in Crowley about 0900CST.</p> <p>St. Landry Parish: Straight-line winds damaged several roofs and storage sheds west of Opelousas at 0925CST.</p> <p>Concordia Parish: A severe thunderstorm caused a patio roof to collapse in Vidalia about 1030CST.</p> <p>Tensas Parish: Strong winds blew some cotton trailers off a road near Cooter Point around 1051CST.</p> <p>East Baton Rouge Parish: A severe thunderstorm blew a tree into a power line and knocked down a sign at State Police headquarters in Baton Rouge about 1110CST.</p> <p>Assumption Parish: A tornado injured four people and destroyed or heavily damaged six mobile homes, a brick home, and five businesses in Pierre Part about 1120CST. All of the injured were thrown out of a destroyed mobile home. Two of them were tossed more than 150 feet away from where the trailer once stood. Estimated damage was about \$250,000.</p> <p>St. John the Baptist Parish: A small tornado did heavy damage to 5 homes in Wallace about 1130CST.</p> <p>Tangipahoa Parish: A tornado destroyed three mobile homes and heavily damaged six others in the town of Tangipahoa about 1200CST. Three people were injured when they were injured in the debris of one of the heavily damaged mobile homes. Damage was estimated at \$300,000.</p> <p>St. Tammany Parish: Several pine trees were blown down west of Madisonville. One fell on top of a trailer while several others blocked LA22 around 1245CST. Around 1332CST a mobile home lost its roof to strong winds in Pearl River. Finally, a plate glass window was broken by straight-line winds in Slidell.</p> <p>St. Bernard Parish: A tornado destroyed an unoccupied mobile home in Toca at 1330CST. In addition, the tornado blew down power lines and uprooted a large tree.</p>											

STORM DATA AND UNUSUAL WEATHER PHENOMENA

FEBRUARY 1987

PLACE	DATE	TIME - LOCAL STANDARD	LENGTH OF PATH (MILES)	WIDTH OF PATH (YARDS)	NO. OF PERSONS		ESTIMATED DAMAGE		CHARACTER OF STORM
					KILLED	INJURED	PROPERTY	CROPS	
LOUISIANA									
Jackson Parish	22	0535CST			0	0	?	?	SVR TSTM-Hail(0.75)
Ouachita Parish	22	0555CST			0	0	?	?	SVR TSTM-Hail(0.75)
A rapidly-moving severe thunderstorm produced 0.75 inch hail in Jonesboro (Jackson Parish) about 0535CST and in Monroe (Ouachita Parish) around 0555CST.									
St. Mary Parish	27	0300CST			0	0	?	?	TSTM-Heavy Rain
About 6.5 inches of rain fell in a 24-hour period in the Berwick, Morgan City area. A two inch burst fell between 0200CST-0300CST. This caused several businesses and at least one home to flood in Berwick.									
Winn Parish	27	1338CST			0	0	0	?	SVR TSTM-Hail(1.00)
A severe thunderstorm produced one inch hail ten miles northeast of Clarence.									
Ouachita Parish	27	1657CST			0	0	?	?	SVR TSTM-Hail(1.00)
Bienville Parish	27	1700CST			0	0	?	?	SVR TSTM-Hail(1.00)
Severe thunderstorms produced one inch hail south of Fairbank (Ouachita Parish) and between Reingold and Bienville (Beinville Parish) between 1657CST-1700CST.									
Franklin Parish	28	0208CST			0	0	?	?	SVR TSTM-Hail(0.80)
Tensas Parish	28	0218CST			0	0	?	?	SVR TSTM-Hail(1.00)
Sabine Parish	28	0234CST			0	0	?	?	SVR TSTM-Hail(1.00)
Jackson Parish	28	0350CST			0	0	?	?	SVR TSTM-Wind, Hail(0.75)
Jackson Parish	28	0352CST			0	0	0	0	Funnel
Winn Parish	28	0405CST			0	0	?	?	SVR TSTM-Hail(0.80)
Jackson Parish	28	0405CST	5.0	100	0	0	5	?	Tornado (F1)
Vernon Parish	28	0415CST			0	0	?	?	SVR TSTM-Wind
Jackson Parish	28	0505CST			0	0	?	?	SVR TSTM-Wind
Morehouse Parish	28	0510CST			0	0	4	?	SVR TSTM-Wind
West Carroll Parish	28	0515CST	7.0	150	0	2	5	?	Tornado (F2)
Ouachita Parish	28	0528CST			0	0	?	?	SVR TSTM-Wind
An area of numerous thunderstorms moved across northern Louisiana between 0208CST-0528CST producing widespread straight-line wind damage, several reports of large hail and at least two tornadoes. A parish by parish summary follows:									
Nickle size hail fell in Wisner (Franklin Parish) around 0208CST. One inch hail was reported at Newlight (Tensas Parish) at 0218CST and in Noble (Sabine Parish) at 0234CST. A severe thunderstorm blew down several trees and dropped penny size hail northeast of Jonesboro (Jackson Parish) about 0350CST. At 0352CST, a funnel cloud was sighted near Weston (Jackson Parish). Around 0405CST, nickle size hail fell in Atlanta (Winn Parish). A tornado destroyed two mobile homes and two frame homes, and damaged seven others along a five mile track from six miles southeast of Quitman to ten miles east-southeast of Quitman (Jackson Parish) around 0405CST. At 0415CST, a severe thunderstorm blew down some trees in Leesville in Vernon Parish; one fell through a roof of a restaurant while another crushed a nearby parked car's roof. At 0505CST, several trees were blown down near Chatam in Jackson Parish. A severe thunderstorm did \$30,000-\$40,000 damage to several barns south of Mer Rouge in Morehouse Parish about 0510CST. A tornado destroyed a mobile home, a frame home and a brick house, and did extensive damage to three brick and two frame houses along a seven mile path from four miles west-southwest of Goodwill to three miles northeast of Goodwill (West Carroll Parish) about 0515CST. Estimated damage was about \$250,000. Two people were injured when the tornado destroyed their mobile home. At 0528CST, power lines were blown down by straight-line winds in Monroe (Ouachita Parish).									
East Feliciana Parish	28	0800CST			0	0	?	?	SVR TSTM-Wind
The front part of a supermarket was blown down in Clinton.									
Washington Parish	28	0819CST			0	0	?	?	SVR TSTM-Wind
About 6 large trees were blown down by a severe thunderstorm in Franklinton.									
17 MAINE									
MEZ 003-004 Washington County	09-10	1200EST 1530EST			0	0	5		Heavy Snow
A large low pressure area over Lake Huron at 0700EST Sunday, re-developed off the Delmarva Peninsula very early Monday morning. It moved east and intensified into a gigantic ocean storm. By 0100EST Tuesday, it was located about 300 miles southeast of Portland, Maine, at which point the storm began to move northeast and eventually north arriving off the Labrador coast at 0700EST Wednesday. The vast majority of the state did not see one snowflake. This was basically a southeast Maine snowstorm, with Washington County recording from 6 to 15 inches of snow, most of which fell Tuesday morning. Strong winds also produced considerable blowing and drifting of snow, impeding snow removal and travel and closing schools Tuesday. To the north, Houlton (Aroostook County) reported 2 inches of snow, while to the west, Ellsworth (Hancock County) had 4 inches, and Bangor (Penobscot County) 2 inches. Following is a list of heavy snowfall amounts in inches and by zone:									
	ZONE 003.....						ZONE 004.....
		Forest City			8				Eastport
		Grand Falls			15				Jonesport
		Vanceboro			12				Machias
		West Grand Lake			11				
		Woodland			15				
MEZ 001-002-003-004-007-008-011 Eastern	11	0500EST			0	0	5		High Winds
The giant ocean storm that brought snow to most of eastern Maine on the 9th and 10th became anchored off the Labrador coast. It generated strong winds throughout eastern Maine, where wind gusts of 30 to 45 mph were common. At 1400EST Wednesday, Caribou (Aroostook County) recorded a gust to 51 mph. These winds produced considerable blowing and drifting snow, reducing visibilities to near zero, and closing roads due to drifting. These conditions made for extremely treacherous travel and an unusually high number of auto accidents. There were no deaths or serious injuries, but several minor cuts and bruises were reported. A freak accident occurred in Searsport (Waldo County) on U.S. Route #1 at 1140EST Wednesday. An empty "office-utility type" trailer was being towed, when the strong cross-winds caused the trailer to break the tow ball from the truck. The trailer then swerved into the opposite lane, became airborne, and landed on top of an oncoming pickup truck whose 30-year-old female driver escaped with only minor head injuries. Both trailer and pickup were extensively damaged. The worst accidents occurred in Penobscot County on Wednesday afternoon. In Orono on U.S. Route 2 at 1205EST, there was a 7-car chain-reaction pileup that took 2 hours to clear, and the other was a 5-car pileup on Parkway South in Brewer. Washington County appeared to have the most roads closed, with sections of Routes 192, 187, 9 and 1 remaining closed into Thursday due to the drifting snow.									
18 MARYLAND and D.C.									
MDZ008-009 Western Maryland	08	1700EST			0	?	?	?	0 Blizzard
Blizzard conditions with snow and blowing snow struck western Maryland, creating near-zero visibility at times. The snow tapered off late on Monday night, the 9th. Wind chill temperatures were 30 to 40°F below zero.									
MDZ001-002-003-004-005-006-007 All but Western Maryland, including DC	08	1700EST			0	?	4	0	High Wind
Custly winds followed a cold front. Winds of 40 to 50 mph were reported. The highest reported gust was 66 mph in Easton. Widespread electrical outages occurred in Annapolis and along the eastern shore. Poor visibility from blowing and drifting snow made driving difficult. Wind chill temperatures dropped to below zero. The winds diminished late on Tuesday, the 10th.									
MDZ001-002-003 Eastern Maryland	08	2000EST			0	?	4	0	Heavy Snow
Precipitation began as rain and freezing rain on Sunday evening, the 8th, and changed to snow at night. Six to ten inches fell in the southern portions. One fatality occurred when a woman passenger in an auto was killed as the car skidded and collided with another car on an icy road.									

STORM DATA AND UNUSUAL WEATHER PHENOMENA

FEBRUARY 1987

PLACE	DATE	TIME - LOCAL STANDARD	LENGTH OF PATH (MILES)	WIDTH OF PATH (YARDS)	NO. OF PERSONS		ESTIMATED DAMAGE		CHARACTER OF STORM	
					KILLED	INJURED	PROPERTY	CROPS		
— MARYLAND and D.C. —										
MD2002-003-005-006-007-008-009 DC and Northern and Western Maryland	22	1500EST			1	?	6	0	Heavy Snow	<p>Heavy wet snow began in the mountains during the late afternoon and reached eastern portions of the state by 2200EST. Snowfall amounts were 12 to 23 inches in the north-central areas and 8 to 15 inches southward toward the southern Washington suburbs. Thunder and lightning were reported at the height of the storm in some areas, and accompanied periods of very heavy snow. Rain was reported early during the storm. Much tree damage was reported, as limbs and trees were frequently downed, especially pines and Bradford Pears. Widespread electrical outages resulted from trees having been downed onto power lines. Outages affected nearly 250,000 customers and averaged 12 to 30 hours in duration. Service to over 2,000 phones was knocked out. Only minor accidents were reported. In Scillipond, a man died in a shed when the roof collapsed as he was feeding his cows. Another man died from a heart attack while shoveling snow in Edgewood. A man in Aberdeen lost two fingers in a snowblower; the legs of another man in Street were fractured under a bulldozer he was using to free a truck trapped in snow when the bulldozer toppled over. M?P?</p>
19 MASSACHUSETTS										
MAZ002-003-009 Southern Bristol and Southern Plymouth Counties, Cape Cod, and the Islands	09-10	afternoon early morning			0	0	5	0	Blizzard	<p>The second blizzard within two weeks was the worst snowstorm to affect Cape Cod and the Islands in at least the past thirty years. Snowfall totals of from one to two feet with drifts of four to eight feet blocked most roads. The snow was of the wet variety and was accompanied by gale force winds from the northeast and north that gusted to hurricane force at some locations. The combination of the heavy, wet snow and high winds brought down tree limbs and wires, causing widespread power losses. About 50,000 customers lost electric power at the height of the storm and the restoration of service took up to three to four days as work crews had difficulty with unplowed streets. A limited state of emergency was declared by the governor, and the National Guard was called out after the storm to help with plowing. Emergency shelters were set up in the Cape towns to aid people who were without heat for several days. Most school systems were closed for a week. On Martha's Vineyard, a total of 12 inches of snow was reported along with the high winds and power outages. On Nantucket, electric service was knocked out across the entire island for a time during the storm. The National Weather Service station at Chatham recorded winds that frequently gusted to 70 to 80 mph and snowfall that, while measured at 23.4 inches, drifted to an extreme extent. Otis Air Force Base near Falmouth had wind gusts of up to 65 mph. Up to 5,000 electric customers lost power in Plymouth as six to twelve inches of snow and high winds affected lower Plymouth and lower Bristol counties during this storm. Snowfall totals from this storm, combined with those of the earlier January blizzard, make this winter one of the top three snowiest winters in the past 81 years on Cape Cod.</p>
20 MICHIGAN ————— NONE REPORTED										
21 MINNESOTA										
MN2001-002-003-004-005 Far North	02	Morning and afternoon			0	0	0	0	Heavy snow	<p>Snow preceded by freezing rain spread into northwest Minnesota by 0200CST. Three to five inches of snow accumulated by 1100CST across Kittson and Roseau Counties and winds of 20 to 35 miles per hour caused roads to fill in with snow as fast as they could be plowed. Heavy snow spread east during the afternoon along the Canadian border and reached the Ely area by 1400CST. Big Falls in central Koochiching County reported 9 inches of new snow.</p>
MN2013-017-018 Southwest and South-Central	02	1100CST			0	0	?	0	High wind	<p>Sustained winds of 30 to 40 miles per hour and gusts to near 60 miles per hour swept across southwest and south-central Minnesota. Marshall recorded a gust of 58 miles per hour at 1245CST and Albert Lea recorded a gust to 59 miles per hour at 1446CST. Ice houses on many lakes were damaged by the gale force wind. Forty to fifty ice houses on Washington Lake in southwest Le Sueur County were damaged or unseated from their icy moorings and blown across the lake.</p>
22 MISSISSIPPI										
Pike County, McComb	15	1210CST	.6	30	0	0	4	0	Tornado (F0)	<p>A weak tornado touched down briefly in southeastern McComb. A roof was blown off one business and several windows were blown out of a few storefronts. Also, a couple of doors were pulled off some businesses. A steeple on a church was blown to the ground.</p>
Walthall County, 3 South Tylertown	15	1230-1234CST	3.0	75	0	2	5	0	Tornado (F2)	<p>A tornado touched down in the Lexie community or about 3 miles south of Tylertown. One home sustained major damage when the roof was blown away and the south wall collapsed. The carhouse was blown away and a car was considered a total loss when a large pecan tree fell on it. The two occupants were injured, but later released from the hospital. Two other outbuildings were destroyed and numerous trees downed. A few other homes suffered damage.</p>
Marion County, Kokomo	15	1250CST	.8	50	0	0	4	0	Tornado (F1)	<p>A tornado struck near Kokomo and destroyed one mobile home. About 40 large pine trees were blown down in the path of the tornado.</p>
Rankin County, 9 SE Brandon	15	1315-1330CST	12	80	0	0	4	0	Tornado (F1)	<p>A tornado touched down 9 miles southeast of Brandon. The tornado traveled northeast about 12 miles and dissipated around 1330 CST 1 mile west of the Rankin/Scott county line. A few outbuildings were damaged, but most of the tornado's track was marked by uprooted and broken trees.</p>
Pearl River County, Nicholson	15	1325-1330CST	3	100	0	2	5	0	Tornado (F2)	<p>A strong tornado destroyed one home and damaged several others. A couple of house trailers were overturned, and several mobile homes destroyed. About 6 vehicles also were damaged. If the tornado had been about 150 yards further south, it would have tracked across a much more populated area including 3 trailer parks.</p>
Jones County, Laurel and Sharon	15	1420CST			0	0	4	0	Thunderstorm Winds	<p>High winds from a thunderstorm blew down trees and power lines in Laurel and in northern Jones County at Sharon.</p>
Stone County, 4 South Wiggins	15	1430CST	1.2	40	0	0	4	0	Tornado (F1)	<p>A tornado touched down 4 miles south of Wiggins. One barn was destroyed while several residences reported minor roof damage. Numerous pine trees were also uprooted.</p>
Harrison County, Biloxi	15	1445CST			0	2	4	0	Thunderstorm Winds	<p>High winds from a thunderstorm damaged a small convenient store. Two occupants in the store were injured by flying glass.</p>
Lowndes County, 1 North Columbus	15	1633-1645CST	10.0	100	0	0	5	0	Tornado (F1)	<p>A tornado touched down 1 mile north of the Columbus city limits near the intersection of Highway 45 and Route 50. The tornado traveled rapidly northeastward and lifted east of Highway 12 or about 8 miles northeast of Columbus. Numerous trees and power lines were downed. One house and an automobile suffered heavy damage. A roof was blown off a small grocery store. Several antennas were broken off. The tornado intermittently lifted off the ground through the length of the path.</p>
Rankin County, Star	28	0845CST	.5	40	0	0	3	0	Tornado (F0)	<p>A weak tornado touched down briefly near Star on Highway 49. Most of the damage was to trees.</p>
Jones County, Wayne County, and Clarke County; 2 South Moselle to 8 West Shubuta	28	0905-0945CST	40	1230	6	350	7	0	Tornado (F4)	<p>A monstrous tornado developed at 0905CST 2 miles south of Moselle. The tornado was only a couple hundred yards wide at first, but grew rapidly as it moved to the northeast at 60mph. At 0915CST, the tornado struck the Glade community about 3 miles southeast of Laurel. At this point the tornado had grown to be nearly 2 miles wide and also was inflicting (F4) damage. Some homes were swept off their foundations; mobile homes were dismantled and tossed in trees. Numerous large trees were flattened. The Glade Elementary School was totally destroyed. Damage to the school was estimated at 5 million dollars. The roof was blown away and both the inner and outer walls collapsed. The only remains of the gym was the walls on the east and west side which were supported by the spectator stands. All six people killed in the tornado were in the Glade community. Four of the deaths occurred in a mobile home. One death occurred when the victim tried to escape from a mobile home in a car and was slammed up against a tree. The other death occurred as a man ran to a mobile home, trying to warn an elderly lady a tornado was approaching. Before he reached the mobile home, the tornado knocked trees on top of him which crushed him to death.</p>

...continued...

STORM DATA AND UNUSUAL WEATHER PHENOMENA

FEBRUARY 1987

PLACE	DATE	TIME - LOCAL STANDARD	LENGTH OF PATH (MILES)	WIDTH OF PATH (YARDS)	NO. OF PERSONS		ESTIMATED DAMAGE		CHARACTER OF STORM	
					KILLED	INJURED	PROPERTY	CROPS		
MISSISSIPPI										
										<p>The tornado continued northeastward into the Powers community or about 4 miles east of Laurel on Highway 84 at 0920CST. A newly built 67,500 square foot warehouse was completely dismantled and tossed in a wooded area a couple hundred yards downwind. Loaded 18-wheelers were tossed around like toys. About a mile and a half down Highway 84, the same gigantic tornado did 3 million dollars worth of damage to Northeast Jones High School. Once the tornado passed north of Highway 84, it slowly diminished in both size and intensity. It moved out of Jones County into extreme northwest Wayne County around 0935CST. The tornado moved into extreme southwest Clarke County at 0940CST and dissipated at 0945CST in the Beaver Dam community or about 8 miles west of Shubuta.</p> <p>After the final count was made, the total estimate of the storm damage was 28.5 million dollars. This number would have been much greater had the tornado not traveled through such rural country. No incorporated towns were struck by this tornado. In total, 13 businesses, 220 homes, 149 mobile homes and 1 apartment building were destroyed. A total of 653 structures were affected. About 700 people were left homeless. Damage to private property was estimated at 20.5 million. Nearly 1600 students had to attend classes elsewhere due to the extreme damage to the schools. M69M M320 M66M M69M F49M M14V</p>
23	MISSOURI									NONE REPORTED
24	MONTANA									NONE REPORTED
NEBRASKA										
NVZ001-005-011	Panhandle Nebraska	26- 0400CST- 28 0800CST			0	0	3	1		Heavy Snow
										<p>Heavy snow fell across most of the panhandle although snowfall intensity decreased some during the morning hours of the 27th. Reported snow amounts included 19 inches at Sidney, 16 inches at Scottsbluff, 15 inches at Dalton and Rushville, 13 inches at Alliance, 12 inches at Chadron and Gordon, and 10 inches at Potter. Some roads and schools were closed.</p>
NVZ002-006	North-Central Nebraska	26- 1900CST- 28 0800CST			0	0	2	1		Heavy Snow
										<p>Heavy snow fell in the northern sandhills, with 11 inches reported at Mullen and 8 inches at Valentine.</p>
NEVADA										
NVZ003		2 0600- 1800 PST			0	0	3	0		High Winds
										<p>High winds buffeted extreme Western Nevada during the day with winds of 55 mph at Carson City and 60 mph at Reno. Winds of 80 mph were reported in the mountains to the west of Reno. The winds caused numerous power outages.</p>
NVZ003		10-11 1800- 1200 PST			0	0	0	0		Heavy Snow
										<p>Locally heavy snow fell in the Lake Tahoe area overnight and in the early morning hours. The snow was mainly in the passes above 7000 feet, and as much as 6 inches in amount. This necessitated chain or snow tire requirements over many passes.</p>
NVZ003		15-16 1800- 2355 PST			0	0	0	0		Heavy Snow
										<p>Heavy precipitation moved into the Lake Tahoe area overnight and continued through the 16th. All snow fell above 7500 feet with mixed rain and snow between 5000 and 7500 feet. 12 inches of snow fell at Incline in the mixed precipitation area with 3 feet of snow at Mount Rose in the all snow area. Most mountain roads had chain requirements.</p>
NVZ005-006		15-16 2200- 1200 PST			0	0	0	0		Heavy Snow
										<p>Locally heavy snow fell overnight in portions of Central and Eastern Nevada. Accumulations were generally 2 to 4 inches with 3 inches at Caliente. The snow caused slick roads with snowtire requirements at times.</p>
NEVADA										
NVZ001-002-003-004-005		23-25 0000- 1800PST			0	0	0	0		Heavy Snow
										<p>A cold and moist storm dropped over Northern and Central Nevada during this period from the north. This storm produced significant snow in most of Northern and Central Nevada. In the Lake Tahoe area, 11 inches fell at Incline and Glenbrook, 18 inches at Stateline and Mount Rose, and 20 inches at Daggett Pass. In Western Nevada, 5 inches fell at Reno, Carson City and Verdi, and 4 inches fell at Winnemucca. In Eastern Nevada, 5 inches fell at Jackpot and Jiggs, 6 inches at Elko, 8 at Battle Mountain, 10 at Eureka Wells and Oasis, and 11 inches at Austin. This storm caused most roads to have chain or snowtire requirements with numerous travel delays.</p>
NVZ007		24-25 2200- 2355PST			0	0	0	0		Heavy Snow
										<p>Heavy snow fell in many areas of Southern Nevada overnight and during the day with snow falling as low as 500 feet at Laughlin. 1 to 2 inches of snow fell in the Las Vegas valley with 5 inches at Mercury and 8 inches at Red Rock. Amounts of 8 to 13 inches fell in the foothills to the west of Las Vegas. The unusual heavy snow fall caused numerous travel problems.</p>
NEW HAMPSHIRE										
NH2 007	Coastal	11 0000EST			0	1	4			High Winds
										<p>A giant storm anchored off the Labrador coast produced strong northwest winds Wednesday. Wednesday afternoon, MNS Concord (Merrimack County) recorded a peak wind gust to 40 MPH; Center Sandwich (Carroll County) had a gust to 58 MPH, while Mt. Washington (Coos County), elevation 6,288 ft., reported gusts to 136 MPH. Along the coast, wind gusts to 41 MPH were blamed for forcing a 9 ton, 12 x 60 foot mobile home to tip on its side on I-95 at 1400 EST. Two lanes of the four-lane highway were blocked off for two hours to remove the moderately damaged mobile home.</p>
NEW JERSEY, Northern										
NJZ015	Metropolitan New Jersey	23 Morning			0	0	0	0		Heavy Snow
										<p>Snow accumulated to 5-8 inches over sections of Metropolitan New Jersey. Traveling was hazardous with a few minor accidents being reported.</p>
NEW JERSEY, Southern										
NJZ 002-003-004-006	Southern New Jersey	9 0100 EST to 1200 EST			0	0	4	0		Heavy Snow
										<p>Snow began falling across Southern New Jersey around 1 AM and ended around noon. Accumulations reached 3 to 5 inches over the Metropolitan Delaware Valley Zone, 4 to 10 inches over the Southern Interior and Coastal Delaware Bay Zones and up to 12 inches over the Southern Coastal Zone. The 1-foot amount was in the Cape May area. Strong winds gusting to over 40 MPH at times resulted in almost impossible traveling conditions due to considerable drifting and visibility near zero at times in blowing and drifting snow. Drifts reached as high as five feet in places in the shore areas. The strong winds and snow brought down many utility lines.</p>
NJZ 002-003-004-006	Southern New Jersey	22 2300 EST to 23 0800 EST			0	0	3	0		Heavy Snow
										<p>Significant snowfall began around 11 PM on the 22nd and ended around 8 AM on the 23rd. Very heavy snowfall that accumulated at 2 to 3 inches an hour occurred during the early morning hours. Accumulations reached 7 to 15 inches over the Metropolitan Delaware Valley Zone, 6 to 16 inches over the Southern Interior Zone, 2 to 16 inches over the Coastal Delaware Bay Zone and 2 to 9 inches over the Southern Coastal Zone. The heavy accumulations resulted in very difficult traveling in some areas and also some downed utility lines.</p>

STORM DATA AND UNUSUAL WEATHER PHENOMENA

FEBRUARY 1987

PLACE	DATE	TIME - LOCAL STANDARD	LENGTH OF PATH (MILES)	WIDTH OF PATH (YARDS)	NO. OF PERSONS		ESTIMATED DAMAGE		CHARACTER OF STORM
					KILLED	INJURED	PROPERTY	CROPS	
29 NEW MEXICO									
Statewide	14				0	0	5	0	High Winds
	Strong winds hit the state during the daylight hours with gusts in the 40-mph range in northern counties and gusts in the 60's, southern sections, particularly along the southern border.								
Statewide	16-21				0	0	4	?	Winter Storm/Heavy Snow
	Four or more inches of snow blanketed most of the state. Over two feet fell in several northern mountain sections, while southern areas received lesser amounts including 6 inches at Roswell and 4 inches at Deming. Mora County was declared a disaster area.								
West-Central, Northern Mountains, and Northwest	24-27				0	0	4	?	Winter Storm/Heavy Snow
	Hardest hit was the West-Central Mountains and Northwest New Mexico, with snow totals of a foot or more common at all elevations in these areas.								
30 NEW YORK, Coastal									
NYZ016-017 Nassau and Suffolk Counties	23 Morning				0	0	0	0	Heavy Snow
	Snow accumulated to 5-8 inches over sections of Nassau and Suffolk Counties of Long Island. Traveling was hazardous with many minor accidents being reported.								
30 NEW YORK, Central									
NYZ 009	04 PM				0	2	5	0	Snow
	Light snow and strong gusty winds created pockets of near-zero visibility in Oneida and southern Herkimer Counties. A male (14 years) suffered head injuries when hit by a car during zero visibility.								
NYZ 009-012-013-020	09 AM				0	4	5	0	Freezing Rain
	Light freezing rain, light snow and periods of drizzle combined to make driving hazardous in Eastern New York. Traffic accidents were a common occurrence in the Mohawk and Hudson valleys.								
NYZ 008-009-018	09 AM				0	3	5	0	Snow
	Eight-thirteen inches of snow fell over portions of the western Adirondacks. High winds behind the storm created areas of poor visibility. Several car accidents and scattered power outages were reported. Local weather observers reported many sastrugi being formed in the Jackson Hill area of Boonville.								
30 NEW YORK, Western									
NYZ002-003 Parts of Ontario and Steuben Counties	04 Evening				0	0	4	0	Snow & Wind
	Whiteouts caused by blowing snow iced up roads. Numerous vehicular accidents were reported.								
NYZ001-002-004-021-022 Portions of Central and Western N.Y.	08 Evening				0	0	5	0	Snow & Wind
	Heavy snow fell over many parts of Central and Western N.Y. Hit the hardest with 22 inches was Sherman, Chautauque County. Niagara County received 8 to 12 inches while Erie County got 4 to 8 inches. Counties east of Lake Ontario received up to a foot of snow. Many accidents occurred as a result of the difficult driving conditions.								
NYZ001 Genesee County	28 Morning				0	0	4	0	Freezing Rain
	Freezing rain caused many vehicles to skid off area roadways. There were reports of injured passengers. Freezing rain was reported in Bergen, Pavilion, Bethany, Batavia, and Penbrooke.								
31 NORTH CAROLINA									
NCZ009 Northern Mountains	08 1700EST				0	0	4	0	Blizzard, High Winds, Cold
	As a strong cold front passed, snow began falling, and with sustained winds of 30 to 40 mph the northern mountain counties experienced blizzard conditions for several hours during the evening. The temperature fell dramatically, and as a result wind chill values dropped to 30 to 50 degrees below zero. Wind gusts reached as high as 65 mph at times, and a good many trees and power lines were blown down across the area. About 3 inches of snow fell.								
NCZ006-007-008-010-012-013 Western Half NC	08 1800-2300EST				0	0	6	0	High Winds
	The high winds continued to spread across the western part of the state, and caused substantial damage in many communities. Gusts to around 50 mph blew down a number of trees and power lines in the Charlotte area, and similar damage was reported over much of the western Piedmont and in the foothills. However, the most damage was reported in the Hendersonville area where a number of structures received damage from gusts as high as 65 mph. Some residents described the event as some of the worst sustained winds in memory. Utility companies reported extensive damage. The damage reached as far east as Asheboro in Randolph County. Total dollar damage was not available, but was estimated at \$500,000. The times shown above are the times the high winds began as the front passed from west to east across the state. The winds lasted well into the night.								
1 NW Edenton, Chowan County	12 1515EST				0	0	0	0	TSTM Winds (52)
	Gusts snapped a pine tree about 30 feet above the ground, and blew a picnic table and swing set about 50 feet. Other thunderstorms moved through northeastern NC and caused gusty winds, but these were limited to 35 to 50 mph.								
NCZ009	16 0000EST				0	0	0	0	Heavy Snow
NCZ002-003-004-005-006-007-008-012-013-014-015 Central 3/4 of State	16 All Day				0	0	6	0	Ice Storm
	A major winter storm caused extensive damage across North Carolina. Most of the damage resulted from sleet which accumulated to depths ranging from 2 to 6 inches. The heaviest accumulations were in the northern parts of the northeast Piedmont and the northern Coastal Plain where 4 to 6 inches were common. The weight of the ice caused many roofs to collapse resulting in the loss of some farm animals, and the loss of a great deal of property. In the eastern part of the affected area, the sleet was mixed with a large amount of freezing rain causing extensive damage to power lines. In fact, one electric coop described the storm as the most expensive in history for them. The precipitation began lightly in the early morning, and by early afternoon about an inch had accumulated in most sections. But the precipitation increased in intensity during the evening, and was even accompanied by thunder. During this two to three hour period, most of the ice fell. In the northern mountains the storm produced 4 to 6 inches of snow.								
NCZ003-005-006-007-009-014 Western and Central NC	27 0500-1100EST				0	0	4	0	Heavy Snow
	Heavy wet snow fell over a good portion of the state. Most places in areas which received snow reported 4 or 5 inches, but some spots in the northern mountains, foothills, and northwest Piedmont reported up to 10 inches. There were a few reports of roofs collapsing from the weight of the snow.								
Cabarrus County	28 1200EST				0	0	?	0	Flood
Chesterfield, Burke County	28 1620EST				0	0	?	0	Flash Flood
Caldwell County	28 1745EST				0	0	?	0	Flash Flood
Anson and Union Counties	28 2000EST				0	0	?	0	Flood
Henderson and Cleveland Counties	28 2100EST				0	0	?	0	Flash Flood
Gaston County	28 2200EST				0	0	?	0	Flood
Catawba County	28 2315EST				0	0	?	0	Flash Flood
	Persistent heavy rains, combined with snow melt in northern sections, caused flooding of many creeks and small streams across the western part of the state on the last day of February. The rain followed the heavy snow, so that was a consideration in the scope of the flooding. Most areas experienced flooding and washing out of bridges, and water got into a few buildings. Rapid rises and flooding of small streams occurred in some western counties when heavy thunderstorms moved into areas which had received 1 to 2 inches of rain in a more gradual manner. Although very little-if any actual flooding was reported from Mecklenburg County, 5 people died when their car was involved in an accident, and ended up in Sugar Creek. The creek was running high, but apparently not flooded at the time. More serious flooding continued into March.								

STORM DATA AND UNUSUAL WEATHER PHENOMENA

FEBRUARY 1987

PLACE	DATE	TIME - LOCAL STANDARD	LENGTH OF PATH (MILES)	WIDTH OF PATH (YARDS)	NO. OF PERSONS		ESTIMATED DAMAGE		CHARACTER OF STORM
					KILLED	INJURED	PROPERTY	CROPS	
32 NORTH DAKOTA									
NDZ015-016 Northeastern North Dakota	07	Evening			0	0	5	0	High Wind
A wind gust to 58 mph was recorded at the Grand Forks airport. The high winds downed power lines in the city of Grand Forks, leaving some residents without electricity for almost eight hours. The wind also blew truck toppers around a car lot, snapped a signal arm at a railroad crossing, and blew down signs.									
33 OHIO									
OHZ002-003-004 Central Lakeshore of Ohio and Northeast Ohio	08	afternoon and evening			0	0	?	0	Heavy Snow and High Wave Erosion and Flooding
Heavy snow started in the area at about 1300EST. By 1700EST, accumulations were 4 to 6 inches. The snow tapered off after 2400EST, by which time there were widespread accumulations of 4 to 8 inches and isolated amounts of about 9 inches. The snow was accompanied by winds that briefly gusted as high as 43 mph, which produced near-blizzard conditions and a great deal of drifting. The strong winds also caused significant wave damage along the Lake Erie shoreline.									
34 OKLAHOMA									
Comanche County, Indiahoma	14	1710CST			0	0	?	?	Hail (1.75)
Comanche County, Cache	14	1740CST			0	0	?	?	Hail (1.75), TSTM Wind
Comanche County, Medicine Park	14	1800CST	3.5	200	0	1	6	?	Tornado (F2), Hail (1.75)
Caddo County, 35W Apache to 2NW Apache	14	1805CST	3.8	100	0	0	?	?	Tornado (F1), Hail (0.88)
Cotton County, 10S Temple	14	1832CST			0	0	?	?	Hail (1.75)
Caddo County, 1S Apache	14	1840CST			0	0	?	?	Hail (0.88)
Comanche County, Sterling	14	1845CST			0	0	?	?	Hail (0.88)
Jefferson County, Hastings	14	1900CST			0	0	?	?	Hail (0.88)
Blaine County, 4S Geary	14	1900CST			0	0	?	?	Hail (0.75)
Jefferson County, Hastings	14	1920CST			0	0	?	?	Hail (1.00), Heavy Rain
Stephens County, 2S Comanche	14	1926CST			0	0	?	?	Hail (0.75)
Grady County, 3N Chickasha	14	1958CST			0	0	?	?	Hail (1.75)
Garvin County, Elmore City	14	2000CST			0	0	?	?	Hail (0.75)
Cotton County, 8NE Walters	14	2000CST			0	0	?	?	Hail (0.75)
Stephens County, 3NW Loco	14	2000CST			0	0	?	?	Hail (1.00)
Oklahoma County, The Village	14	2020CST			0	0	?	?	Hail (0.75)
Caddo County, 5NNE Anadarko	14	2035CST			0	0	?	?	Hail (1.00)
Garvin County, Paoli	14	2045CST			0	0	?	?	Hail (0.88)
McCain County, Wayne	14	2119CST			0	0	?	?	Hail (0.75)
Garvin County, 5S Paoli	14	2140CST			0	0	?	?	TSTM Wind
Grady County, 5SW Chickasha	14	2145CST			0	0	?	?	Hail (0.75)
Caddo County, 8ESE Anadarko	14	2145CST			0	0	?	?	Hail (0.75)
McCain County, Rosedale	14	2145CST			0	0	?	?	Hail (0.75)
Pottawatomie County, Macomb	14	2145CST			0	0	?	?	Hail (0.75)
Bryan County, Calera	14	2210CST			0	0	?	?	TSTM Wind
Payne County, 12WSN Stillwater	14	2215CST			0	0	?	?	Hail (0.75)
Bryan County, Armstrong	14	2225CST	1	50	0	0	5	?	Tornado (F1)
Bryan County, Keap	14	2235CST			0	0	?	?	Hail (0.75)
Choctaw County, 4NW Boswell	14	2315CST			0	0	?	?	TSTM Wind
OKLAHOMA									
OKZ007-008-012-013	16	1800CST			0	0	?	?	Heavy Snow
Snow ranging from 3 to 5 inches fell overnight, causing numerous automobile accidents. Several schools were closed.									
Seminole County, 2W Wewoka	27	1643CST			0	0	?	?	Hail (0.75)
Marshall County, Kingston	27	2050CST			0	0	?	?	Hail (0.88)
Custer County, 8W Clinton	27	2100CST			1	0	?	?	Flooding
Johnston County, Milburn	27	2106CST			0	0	?	?	Hail (0.88)
Johnston County, 3W Wapanuka	27	2130CST			0	0	?	?	Hail (1.75)
Coal County, Clarita	27	2145CST			0	0	?	?	Hail (1.00)
Hughes County, Stuart and 10SW Stuart	27	2225CST			0	0	?	?	Hail (1.75)
Hughes County, 5S Stuart	27	2228CST			0	0	?	?	Hail (0.88)
Marshall County, 2NW Madill	27	2250CST			0	0	?	?	Hail (0.75)
Johnston County, Milburn	27	2256CST			0	0	?	?	Hail (0.88)
Johnston County, Wapanucka	27	2317CST			0	0	?	?	Hail (0.88)
Johnston County, Bromide	27	2320CST			0	0	?	?	Hail (0.75)
Coal County, 35W Clarita	27	2320CST			0	0	?	?	Hail (0.75)
Johnston County, 2E Wapanucka	27	2321CST			0	0	?	?	Hail (0.75)
Atoka County, 16W Atoka	27	2321CST			0	0	?	?	Hail (0.75)
Atoka County, 4W Atoka	27	2337CST			0	0	?	?	Hail (2.75)
Coal County, Coalgate	27	2348CST			0	0	?	?	Hail (1.75), TSTM Wind
Atoka County, Stringtown	28	0015CST			0	0	?	?	Hail (2.75)
Thunderstorms produced strong winds and hail ranging from 3/4 inch to baseball size across portions of the south and southeast. Baseball size hail fell for 30 minutes north of Stringtown in Atoka County. A temporary low-water bridge across the Washita River 8 miles west of Clinton was under water when a man and a woman attempted to drive across. The car was washed off of the bridge. The man escaped, but the woman could not get out of the vehicle and drowned. FLOODING P56V.									
35 OREGON									
ORZ001-002 North and Central Coast	01	until 0445PST			0	?	5	0	High Wind
A strong low pressure system moved northward along the coast. Wind gusts of up to 70 mph were reported. Many trees were felled and power line damage was frequent. Heavy rain produced mud slides and highway washouts.									
ORZ001-002-003	01-04	0000PST 0900PST			1	?	5	?	Flood
Heavy rains from the January 31 - February 01 storm and storms that followed produced considerable flooding of the central and northern coastal rivers and many of the Willamette River tributaries. One man was killed on the flooded Yamhill River as he attempted to recover a boat. There were several mud slides, highways flooded, and several homes were damaged by flood waters.									
ORZ001-002-003	14	1945PST			0	?	?	0	High Wind
A strong cold front moved onto the coast in the evening. Wind gusts of up to 80 mph were recorded on the headlands. Only minor damage was reported. A cargo boat and pier were slightly damaged at Chetco Harbor in Brookings as the boat attempted to dock in the wind.									

STORM DATA AND UNUSUAL WEATHER PHENOMENA

FEBRUARY 1987

PLACE	DATE	TIME - LOCAL STANDARD	LENGTH OF PATH (MILES)	WIDTH OF PATH (YARDS)	NO. OF PERSONS		ESTIMATED ¹ DAMAGE		CHARACTER OF STORM
					KILLED	INJURED	PROPERTY	CROPS	

PLACE	DATE	TIME - LOCAL STANDARD	LENGTH OF PATH (MILES)	WIDTH OF PATH (YARDS)	NO. OF PERSONS		ESTIMATED ¹ DAMAGE		CHARACTER OF STORM
					KILLED	INJURED	PROPERTY	CROPS	

36 PENNSYLVANIA, Eastern

PAZ-009-011-012	22	2200 EST to							
Lower Susquehanna, East Central and Southeast	23	0900 EST			0	0	5	0	Heavy Snow

A winter storm moving northeast along the coast caused heavy snowfall over the southern half of Eastern Pennsylvania. The heaviest accumulations of snow were in an area from southern York County and southern Lancaster County across Chester County to central Montgomery County. Accumulations of 17 to 24 inches fell in this area. Christiansburg in Lancaster County reported 24 inches and Coatesville in Chester County had 23 inches. Accumulations ranged down to only around 5 inches in areas just to the north of Allentown. The northern half of Eastern Pennsylvania also had snowfall, but accumulations were only 1 to 5 inches. The snow began from around 10 PM to midnight and had mostly ended by 9 AM. In the area of greatest accumulation the heaviest snowfall occurred from around midnight to around 4 AM and came down at nearly 5 inches per hour. The heavy snowfall brought down many utility lines and also caused many automobile accidents.

36 PENNSYLVANIA, Western

PAZ001-002	08	night							Heavy Snow
Northwest Pennsylvania					0	0	0	0	Six to eight inches of lake-effect snow fell throughout northwest Pennsylvania.
PAZ005-006	22	night			0	0	0	0	Heavy Snow
Southern Mountains									Six to ten inches of snow fell throughout the area from an East Coast storm.

37 RHODE ISLAND ——— NONE REPORTED

38 SOUTH CAROLINA

Little Pee Dee River Basin	1								Flooding
SCZ005-007									Little Pee Dee River was above stage through the 10th at Galivants Ferry. The river crested at 10.8 feet or 1.8 feet above flood stage on February 1st. Swampland flooding was reported.
Edisto River Basin	1				0	0	?	?	Flooding
SCZ008									Edisto River at Givhans Ferry crested at 11.6 feet or 1.6 feet above flood stage on the 1st. Flooding of swampland adjacent to the river was reported from the 1st through the 6th.
Lower Santee Basin	1-13				0	0	?	?	Flooding
SCZ007-008									Lower Santee River was 3.8 feet above flood stage near Jamestown through the 13th. Considerable lowland flooding was reported.
Northwest South Carolina	8	1300EST			0	0	4	0	High Winds
SCZ002									High winds associated with a cold frontal passage blew out glass windows of the old Cleveland Hotel, knocked down street signs, broke limbs, and caused more than 200 power interruptions in Spartanburg, Cherokee and Greenville counties. The highest wind speed recorded at the Greer Airport was 44 mph. Several fires were attributed to the high winds.
Northwest, North-Central and North-east South Carolina	16	0800EST			1	0	5	4	Ice Storm
SCZ001-002-003-004-005-006-007									A winter storm accompanied by freezing rain, sleet and snow covered northwestern, northern, and portions of central and northeastern South Carolina with several inches of glaze, sleet or snow. There were numerous traffic accidents. More than 30,000 homes in the Pee Dee area were without power, and many trees were broken by ice. Accumulations of ice varied from only 3 inches in northern South Carolina. A.F. Avant, male, age 31, died from cold exposure in Marion County. The ice cover extended from a line through southern Horry County, Columbia and Aiken northward over the remainder of the state.
Horry County	16	0835EST			0	0	3	0	Flooding
Georgetown County	16	0839EST			0	0	3	0	Flooding
									Tides 1 to 2 feet above normal flooded low-lying areas, causing light beach erosion.

— SOUTH CAROLINA

Charleston County	16	0900EST							High Winds
									High winds blew down several trees near the Citadel in Charleston and caused several electrical power interruptions.
Horry County	27	0700EST			0	0	3	0	Flooding
Georgetown Coast	27	0705EST			0	0	3	0	Flooding
Charleston County	27	0730EST			0	0	3	0	Flooding
Beaufort County	27	0735EST			0	0	3	0	Flooding
									A high pressure ridge along the eastern seaboard accompanied by a quasi-stationary front across the northern Gulf of Mexico caused strong northeast to easterly winds along the South Carolina coast from the 26th through the 28th. Tides were 1 to 2 feet above normal producing moderate beach erosion.
Spartanburg County	28	2200EST			0	0	4	0	Flash Flooding
									A bridge on a secondary road near Woodruff was washed out and dropped ten feet. Also, several roads and 7 houses in the Converse Height section of Spartanburg were flooded. Water was reported as 4 feet deep on Chester Street.
Broad River Basin	28				0	0	?	?	Flooding
SCZ002									Broad River reached 11.8 foot stage or 1.8 feet above flood stage near Gaffney, flooding adjacent river lowlands.
Broad River Basin	28				0	0	?	?	Flooding
SCZ003-004									Broad River at Blair reached 19.6 feet or 5.6 feet above flood stage, flooding adjacent river lowlands.

39 SOUTH DAKOTA

SDZ00N-00W	14-	Evening-							Snow
Northern and Western SD	15	Aftn.			0	0	3	0	Four to eight inches of snow fell across the northern and the western parts of the state. Eight inches fell at Custer (Custer), six inches at Lead (Lawrence), five inches at Mobridge (Walworth) and four inches at Belle Fourche (Butte) and at Aberdeen (Brown). The snow made many roads slippery. Several accidents occurred in the northeast part of the state.
SDZ00W-00C-00E	24-	Aftn.-			0	0	4	0	Snow
Northern, Western and Northeast SD	28	Morning							Six to thirty inches of snow fell across the western and central parts of the state. Three to six inches fell in the northeast part. Some of the larger amounts reported were thirty inches at Philip (Haakon), twenty-six inches at Murdo (Jones) and at Timber Lake (Dewey) and fifteen inches at Rapid City (Pennington). Eight to fourteen inches of snow fell in the Black Hills area. Three to six inches fell in the northeast part of the state. Numerous accidents occurred in the western and central sections. Many roads were closed including Interstate 90 which was closed for most of the 27th between Kadoka (Jackson) and Rapid City (Pennington). Slippery roads were a major factor in the vehicle injuries of three women on Highway 12, six and one-half miles east of Ipswich (Edmunds) in the late afternoon of the 27th.

40 TENNESSEE

Haywood County	03	0550CST							Dense Fog
									A chain-reaction traffic accident occurred on I-40 near the 45-mile marker in Haywood County (near Antioch) as dense fog reduced visibilities to around 50 feet. Four separate wrecks occurred; a tractor-trailer and a station wagon towing a trailer burned and were destroyed. One person was killed and four were injured in the mishap. Two valuable walking horses were killed as well. Loss was estimated between 1 1/2 and 2 million dollars.
Memphis, Shelby County	28	1300-1700CST			1	0	0	0	High Wind
									High winds occurred during the afternoon. A tree fell on and killed a boy in the Frayser section of Memphis. Winds at Millington Naval Air Station gusted to over 40 miles an hour.

STORM DATA AND UNUSUAL WEATHER PHENOMENA

FEBRUARY 1987

PLACE	DATE	TIME - LOCAL STANDARD	LENGTH OF PATH (MILES)	WIDTH OF PATH (YARDS)	NO. OF PERSONS		ESTIMATED DAMAGE		CHARACTER OF STORM
					KILLED	INJURED	PROPERTY	CROPS	
41 TEXAS, Northern									
Taylor County, Dyess AFB	14	1816CST			0	0	?	?	TSTM Wind (51)
		Wind gusts up to 51 knots were recorded at Dyess Air Force Base at 1816CST.							
Erath County, Stephenville	14	1833CST			0	0	?	?	Hail (1.00)
		Hail up to 1 inch in diameter fell at Stephenville.							
Eastland County: Eastland	14	1900CST			0	0	?	?	TSTM Wind
Rising Star	14	1900CST			0	0	?	?	TSTM Wind
		Several trees were blown onto power lines in Eastland at 1900CST. A fence was blown down in Rising Star at 1900CST.							
Parker County: 2NW Weatherford	14	1905CST			0	0	?	?	Hail (1.75)
Weatherford	14	2040CST			0	0	4	?	TSTM Wind
Poolville	14	2040CST			0	0	3	?	TSTM Wind
12S Weatherford	14	2040CST			0	0	3	?	TSTM Wind
		Golfball-size hail fell 2 miles northwest of Weatherford at 1905CST. Strong winds produced some damage at an automobile dealership in Weatherford at 2040CST. A tree was blown onto a house in Poolville at 2040CST. A house was partially unroofed 12 miles south of Weatherford at 2040CST.							
Palo Pinto County: Mineral Wells	14	1909CST			0	0	?	?	Hail (0.75)
Mineral Wells	14	2000CST			0	0	3	?	TSTM Wind
		Hail up to 3/4 inch in diameter fell in Mineral Wells at 1909CST. Strong winds broke a storefront window and damaged gutters on a building in downtown Mineral Wells at 2000CST.							
Comanche County: 5S Comanche	14	1930CST			0	0	?	?	Hail (1.00)
Comanche	14	2033CST			0	0	?	?	Hail (0.75)
		Hail up to 1 inch in diameter fell 5 miles south of Comanche at 1930CST. Hail up to 3/4 inch in diameter fell at Comanche at 2033CST.							
Wise County: Decatur	14	1950CST			0	0	?	?	TSTM Wind (52)
5W Bridgeport	14	2020CST			0	0	3	?	TSTM Wind
		Wind gusts up to 52 knots were observed in Decatur at 1950CST. Strong winds overturned a travel trailer and downed trees 5 miles west of Bridgeport at 2020CST.							
Wichita County, Sheppard AFB	14	1954CST			0	0	?	?	TSTM Wind (53)
		Wind gusts up to 53 knots were recorded at Sheppard Air Force Base at 1954 CST.							
Jack County: 10S Jacksboro	14	2000CST			0	0	3	?	TSTM Wind
Jacksboro	14	2010CST			0	0	?	?	Hail (0.75)
5N Jacksboro	14	2026CST			0	0	?	?	Hail (1.00)
		Strong winds downed several power lines 10 miles south of Jacksboro at 2000CST. Dime-size hail fell at Jacksboro at 2010CST. Quarter-size hail fell 5 miles north of Jacksboro at 2026CST.							
Montague County, 5S Bowie	14	2023CST			0	0	?	?	Hail (1.75)
		Hail to golfball size fell 5 miles south of Bowie at 2023CST.							
Hood County, 5N Granbury	14	2030CST			0	0	3	?	TSTM Wind
		Strong winds unroofed a mobile home 5 miles north of Granbury at 2030CST.							
Somervell County, Glen Rose	14	2040CST			0	0	?	?	Hail (0.75)
		Hail up to dime size fell at Glen Rose at 2040CST.							
Johnson County, 2W Cleburne	14	2045CST			0	0	4	?	TSTM Wind
		A warehouse was destroyed and a porch blown from a house 2 miles west of Cleburne at 2045CST.							
Tarrant County, Fort Worth	14	2100CST			0	0	3	?	TSTM Wind
		An awning was blown from a building and several windows shattered in downtown Fort Worth.							

PLACE	DATE	TIME - LOCAL STANDARD	LENGTH OF PATH (MILES)	WIDTH OF PATH (YARDS)	NO. OF PERSONS		ESTIMATED DAMAGE		CHARACTER OF STORM
					KILLED	INJURED	PROPERTY	CROPS	
TEXAS, Northern									
Denton County: Denton	14	2100CST			0	0	?	?	TSTM Wind (52)
Denton	14	2115CST			0	0	?	?	Hail (1.00)
Lake Dallas	14	2115CST			0	0	3	?	TSTM Wind
7W Justin	14	2105CST			0	1	4	?	TSTM Wind
Argyle	14	2120CST			0	0	?	?	Hail (0.75)
Lake Dallas	14	2145CST			0	0	3	?	TSTM Wind
		Wind gusts up to 52 knots were observed at Denton at 2100CST. Hail up to 1 inch in diameter fell at Denton at 2115CST. Strong winds overturned 13 boat slips at a marina on Lake Dallas at 2115CST. Two house trailers were destroyed by strong winds 7 miles west of Justin at 2105CST resulting in one injury. Hail up to 3/4 inch in diameter fell at Argyle at 2120CST. A large highway sign was downed by winds at Lake Dallas at 2145CST.							
Cooke County, Gainesville	14	2115CST			0	0	3	?	TSTM Wind
		Strong winds downed several powerlines in Gainesville.							
Dallas County: Redbird Airport	14	2122CST			0	0	?	?	TSTM Wind (55)
Richardson	14	2123CST			0	0	3	?	TSTM Wind
		Wind gusts up to 55 knots were recorded at Redbird Airport at 2122CST. A carport was blown off a house and several fences downed by strong winds in Richardson at 2123 CST.							
Ellis County, Maypearl	14	2130CST			0	0	?	?	Hail (1.75)
		Hail up to golfball size fell at Maypearl.							
Collin County, Plano	14	2135CST			0	0	4	?	TSTM Wind
		Strong winds downed 15 powerlines in Plano.							
Hill County, Itasca	14	2145CST			0	0	?	?	Hail (1.75)
		Hail up to golfball size fell at Itasca.							
Grayson County: Grayson Co. Airport	14	2149CST			0	0	?	?	TSTM Wind (50)
10SW Sherman	14	2200CST			0	0	?	?	Hail (0.75)
10SW Sherman	14	2200CST			0	0	4	?	TSTM Wind
8NW Denison	14	2210CST			0	0	4	?	TSTM Wind
		Wind gusts up to 50 knots were recorded at Grayson County Airport at 2149CST. Hail up to dime size covered the ground up to 1 inch deep 10 miles southwest of Sherman at 2200CST. Strong winds unroofed several barns and houses 10 miles southwest of Sherman at 2200CST. Strong winds damaged several bathhouses and a barn 8 miles northwest of Denison at 2210CST.							
Kaufman County, Forney	14	2150CST			0	0	?	?	TSTM Wind
		Strong winds downed several large tree limbs in Forney.							
Hunt County, Greenville	14	2220CST			0	0	3	?	TSTM Wind
		Strong winds shattered several storefront windows in downtown Greenville.							
Fannin County, Bonham	14	2225CST			0	0	?	?	Hail (0.75), TSTM Wind (52)
		Hail up to 3/4 inch in diameter fell in Bonham. Strong winds up to 52 knots downed several trees in Bonham.							
Delta County, Cooper	14	2240CST			0	0	3	?	TSTM Wind
		Strong winds destroyed several barns, uprooted trees and downed powerlines at Cooper.							
Lamar County, Paris	14	2310CST			0	0	?	?	Hail (0.75)
		Hail up to dime size fell at Paris.							
Morris County, Naples	15	0101CST			0	0	?	?	Hail (1.00)
		Hail up to nickel size fell at Naples.							
Cass County, Hughes Springs	15	0102CST			0	0	?	?	Hail (1.00)
		Hail up to 1 inch in diameter fell at Hughes Springs.							
Marion County, 8NW Jefferson	15	0110CST			0	0	?	?	Hail (1.00)
		Hail up to 1 inch in diameter fell 8 miles northwest of Jefferson.							
Bowie County: Maud	15	0115CST			0	0	?	?	Hail (1.00)
5N DeKalb	15	0120CST			0	0	0	0	Funnel cloud
		Hail up to 1 inch in diameter fell at Maud at 0115CST. A funnel cloud was observed 5 miles north of DeKalb at 0120CST.							

STORM DATA AND UNUSUAL WEATHER PHENOMENA

FEBRUARY 1987

PLACE	DATE	TIME - LOCAL STANDARD	LENGTH OF PATH (MILES)	WIDTH OF PATH (YARDS)	NO. OF PERSONS				ESTIMATED DAMAGE		CHARACTER OF STORM
					KILLED	INJURED	PROPERTY	CROPS	PROPERTY	CROPS	
— TEXAS, Northern											
Limestone County, 8S Groesbeck	20	0430CST			0	0	?	?	Hail (0.75)		
		Hail up to dime size fell 8 miles south of Groesbeck.									
McClellan County, Axtell	20	0430CST			0	0	?	?	Hail (1.75)		
		Hail up to golfball size fell at Axtell.									
Stephens, Palo Pinto, Jack, Montague and Wise Counties	20	morning			0	0	0	0	Heavy snow		
		Up to 8 inches of snow fell across Stephens, Palo Pinto, Jack, Montague and Wise counties during the early morning, closing many schools.									
Cherokee County, SSE Jacksonville	27	1420CST			0	0	?	?	Hail (1.00)		
		Hail up to 1 inch in diameter fell 5 miles southeast of Jacksonville.									
Rusk County, Overton	27	1438CST			0	0	?	?	Hail (1.00)		
		Hail up to nickel size fell at Overton.									
Morris County: 2NE Centerpoint Naples	27	1452CST			0	0	?	?	Hail (1.00)		
	27	1515CST			0	0	?	?	Hail (0.75)		
		Hail up to 1 inch in diameter fell 2 miles northeast of Centerpoint at 1452CST. Hail up to 3/4 inch in diameter fell at Naples at 1515CST.									
Harrison County, 5N Hallsville	27	1522CST			0	0	?	?	Hail (1.00)		
		Hail up to nickel size fell 5 miles north of Hallsville.									
Bell County, Killen	27	2040CST			0	0	?	?	Hail (1.00)		
		Hail up to quarter size fell in Killen.									
McClellan County: Bruceville 7SE Waco Mart	27	2133CST			0	0	?	?	Hail (1.00)		
	27	2214CST			0	0	?	?	Hail (1.25)		
	27	2225CST			0	0	3	?	ISTM Wind		
		Hail up to quarter size fell at Bruceville at 2133CST. Hail up to half-dollar size fell 7 miles southeast of Waco at 2214CST. Strong winds damaged the roof of a patio and garage in Mart at 2225CST.									
Red River County: Bogata 3N Clarksville	27	2245CST			0	0	?	?	Hail (1.00)		
	27	2305CST			0	0	?	?	Hail (1.75)		
		Hail up to 1 inch in diameter fell at Bogata at 2245 CST. Hail up to golfball size fell 3 miles north of Clarksville at 2305CST.									
Shelby County, 10SE Shelbyville	28	0220CST			0	0	?	?	TSTM Wind		
		Strong winds downed several trees 10 miles southeast of Shelbyville.									
Cooke, Grayson, Fannin, and Lamar Counties	28	Morning			0	0	?	?	High Wind		
		An intense low pressure system produced strong winds of up to 52 knots in a narrow band along the Red River from Gainesville to Paris. Several trees were uprooted and scattered reports of roof damage and downed signs were received.									
41 TEXAS, Southern											
Cameron County	06	1300CST			0	0	5	0	Flooding		
		Torrential rains of 6 to 7 inches fell over a two hour period, causing flooding over portions of the city of Brownsville. The resulting flood waters were considered by some to be worse than the flooding from Hurricane Beulah of 1967. The flooding caused disruption of activities over the area from the downtown area to near Hanna High. The high water closed schools and businesses and stranded several motorists. A flood drainage system in the city was washed away and destroyed.									
Bexar County	14	2330CST			1	0	0	0	Tstm.Winds (?)		
		On Lake Calaveras, in the southeastern part of the county, high winds were blamed for the drowning of a man, as he was reported to have fallen out of his boat due to the very rough water. Power lines were also downed in the northwest part of the county. M350									
— TEXAS, Southern											
Williamson County	14	2340CST			0	0	0	0	Hail (0.75)		
		Three-quarter inch hail fell on the west side of Georgetown.									
Austin County	14	2340CST			0	0	0	0	Hail (0.75)		
		Three-quarter inch hail was reported in the county. The specific location was not reported.									
Polk County	15	0050CST			0	0	0	0	Tstm.Winds (0.75)		
		Many trees were downed by high winds from a thunderstorm in Livingston.									
Colorado County	15	0136CST			0	0	0	0	Hail (1.00)		
		One inch hail fell near Columbus. Damage was not reported.									
Fort Bend and Harris Counties	15	0230CST			0	0	4	0	Tstm.Winds (?)		
		In the Mission-Bend subdivision near Clodine, high winds blew portions of roofs off of several houses. Fences were downed and some damage was done to automobiles. Near Orchard, one barn was demolished.									
Waller County	15	0240CST			0	0	0	0	Tstm.Winds (?)		
		High winds from a thunderstorm downed power lines in parts of the county. Specific location was not reported.									
Wharton County	15	0245CST			0	0	4	0	Tstm.Winds (?)		
		High winds from a thunderstorm blew the side off of a store in El Campo.									
Harris County	15	0320CST			0	0	5	0	Tstm.Winds (?)		
		High winds from a thunderstorm downed power lines near the Katy freeway. In downtown Houston, a restaurant lost its roof. Near Alvin, high winds severely damaged a trailer home.									
Montgomery County	15	0325CST			0	0	0	0	Tstm.Winds (?)		
		High winds from a thunderstorm downed trees in the eastern part of the county.									
Val Verde County	15	1055CST			0	0	0	0	Winds (70)		
		The National Park Service reported wind gusts to near 80 MPH at the Rough Canyon Marina on Lake Amistad. The winds were caused by a strong pressure gradient and canyon funneling.									
Jefferson County	18	0450CST	.25	25	0	0	5	0	Tornado (F1)		
		A small tornado touched down briefly near the town of Fannett in the Green Acres subdivision. One mobile home was flipped over on its side and heavily damaged. One garage and a shed were destroyed. There was roof damage to two homes and one barn. Port Arthur NWS office recorded a wind gust to 60 MPH.									
Victoria County	20	0240CST			0	0	0	0	Hail (1.00)		
		One inch diameter hail fell in the Northcrest area of Victoria. No damage was reported.									
Uvalde County	27	1900CST			0	0	0	0	Tstm.Winds (?)		
		Trees and utility poles were downed in and around Uvalde. The winds were reported by the sheriff's department.									
Llano County	27	1930CST			0	0	0	0	Hail (1.75)		
		Golfball size hail was reported in and around Kingsland. Damage was not reported.									
Conal County	27	1930CST			0	0	4	0	Tstm.Winds		
		High winds from a thunderstorm downed power lines and a few trees in New Braunfels. One tree fell on a mobile home and destroyed it.									
Burnet County	27	1935CST			0	0	0	0	Hail (1.75)		
		Golfball size hail was reported 4 miles south of the town of Burnet. Damage was not reported.									
Bexar County	27	1945CST			0	0	0	0	Hail (1.75)		
	27	1945CST			0	0	0	0	Tstm.Winds		
		Golfball size hail fell on the north side of the city of San Antonio. Damage was not reported. High winds from a thunderstorm estimated near 60 MPH hit the northwest side of the city of San Antonio. Damage was not reported.									
Atascosa and Wilson Counties	27	2035CST			0	0	0	0	Tstm.Winds		
		High winds from a thunderstorm knocked power lines down in Lytle and in Floresville.									

STORM DATA AND UNUSUAL WEATHER PHENOMENA

FEBRUARY 1987

PLACE	DATE	TIME - LOCAL STANDARD	LENGTH OF PATH (MILES)	WIDTH OF PATH (YARDS)	NO. OF PERSONS		ESTIMATED DAMAGE		CHARACTER OF STORM
					KILLED	INJURED	PROPERTY	CROPS	
TEXAS, Southern									
Bee County	27	2045CST			0	0	0	0	Istm.Winds
									High winds from a thunderstorm in and around Beeville blew out windows on a home that was under construction. Another home lost its roof. Several trees were blown over. One storefront lost its windows.
Goliad County	27	2100CST			0	0	0	0	Hail (0.75)
									Hail the size of dimes fell in Goliad. Damage was not reported.
Mueces County	27	2123CST			0	0	0	0	Istm.Winds (52)
									High winds from a thunderstorm gusted to 60 MPH at the NMS office at the International Airport in Corpus Christi. No damage was reported.
Victoria County	27	2143CST			0	0	4	0	Istm.Winds
									High winds from a thunderstorm blew the roof off of a trailer home in Victoria. The NMS office in Victoria recorded a wind gust to 46 knots.
41 TEXAS, Western									
El Paso County	14	morning-afternoon			0	0	6	0	High Wind
									Strong gradient winds, gusting to 60 miles per hour at the airport, rocked much of the city of El Paso beginning around sunrise and continuing well into the evening. The windstorm followed passage of a strong cold front and resulted in widespread damage to signs, vehicles, roofing, and transmission towers. At El Paso International Airport a 50 thousand pound DC-3 aircraft was blown 250 yards, a Cessna light airplane was flipped, and two hangars were completely destroyed. The blowing dust and sand that accompanied the high wind severely pitted auto and residential glass that was not broken by the high wind itself.
Culberson County	14	afternoon-evening			0	0	0	0	High Wind
									Gradient winds gusted to 104 miles per hour following passage of a strong cold front at Guadalupe Pass. No damage was noted, since a high wind warning discouraged travel into the area.
42 UTAH									
Cache County, Logan	13	2047MST			0	0	1	0	Thunderstorm Wind (GS1)
									A thunderstorm wind gust to 70 mph was measured at the Utah State University Communications Center at about 8:47 p.m. MST.
UTZ010 Northern Mountains	14	0600MST			0	0	1	0	Heavy Snow
UTZ010 Northern Mountains	14	1800MST			0	0	1	0	Heavy Snow
									Heavy snowfall occurred at many ski resorts along the Wasatch Front during the night of the 13th and morning of the 14th. A few of the twelve-hour snowfall totals as of 6:00 a.m. on the 14th included 11.5 inches at Alta, 13 inches at Snowbird, 10 inches at Beaver Mountain, 9 inches each at Solitude and Spruces, and 8 inches at Powder Mountain. By late afternoon, an additional 8 inches fell at the Alta resort.
UTZ008 Southeast Valleys	14	unk			0	0	1	0	High Wind
									Sometime during the evening of the 13th or early morning hours of the 14th, the National Park Service at Lake Powell recorded a wind gust of 70 mph. The time of the gust was not known.
UTZ006 Southwest Valleys	19	0446MST			0	0	1	0	Heavy Snow
UTZ010 Northern Mountains	19	0600MST			0	0	1	0	Heavy Snow
UTZ011 Southern Mountains	19	1518MST			0	0	1	0	Heavy Snow
									The Utah Highway Patrol at Cedar City reported 4 inches of new snow during the early morning hours of the 19th. The Alta ski resort had received 9 inches during the same time period. The Brian Head ski resort reported a total of 12 inches of new snow for the 12-hour period ending a 3:18 p.m. MST.
UTZ011 Southern Mountains	23	2100MST			0	0	1	0	Heavy Snow
									A spotter at Pinto Junction west of Cedar City reported 12 inches of new snow during the evening hours of the 23rd.
UTAH									
UTZ010 Northern Mountains	24	0455MST			0	0	1	0	Heavy Snow
UTZ002-003 Wasatch Front and Great Salt Lake Desert	24	0530MST			0	0	1	0	Heavy Snow
UTZ011 Southern Mountains	24	0645MST			0	0	1	0	Heavy Snow
UTZ006-008-011 Southwest and Southeast Valleys and Southern Mountains	24	1315MST			0	0	1	0	Heavy Snow
									A persistent winter storm continued to dump heavy snow at several locations across the state. Several Northern Wasatch ski resorts reported heavy snow accumulations by the early morning hours. Alta, Park West, and Brighton all received 8 inches overnight, and Solitude reported a total of 10 inches by 6:00 a.m. on the 24th. At about the same time, spotters in Holladay, Tooele and Orem reported 4 inches of new snow each. By 6:45 a.m., a spotter at Duck Creek in the Southern Mountains had an accumulation of 16 inches of snow during the past 24 hours. By early afternoon, spotters reported 18 inches of new snow at Monticello, 4 inches at Kanab, and 4 inches of new snow at Panguitch.
43 VERMONT									
Franklin County	09	0715EST			0	6	5	0	Blowing Snow
									Whiteout conditions resulted in a motor vehicle accident along Route 105 near the town of Enosburg. A second, nearby accident involved a school bus, while other minor accidents were reported throughout the day in Franklin County. All reports listed weather as being a contributing factor or the direct cause.
44 VIRGINIA									
VAZ002-003-004-005-006-007-008-009-010-011-012-013-014 Central and Northern Virginia	08	noon EST			0	3	4	0	High Winds
									Strong winds following a cold front picked up on Sunday afternoon, peaked early on Monday morning between 4 am and 11 am, and then subsided by evening. The wind averaged at 25 to 35 mph with the highest gusts reaching 50 to 65 mph. The Chesapeake Bay Bridge-Tunnel had 60 mph winds and was closed to vulnerable vehicles. There were scattered power outages, and some isolated trailers were blown over. Three construction workers were injured in two separate accidents in Henrico County when buildings under construction collapsed. (M320, M??0, M??0 injuries)
VAZ015-016 Southwestern Virginia	08	1400EST			0	2	4	0	Blizzard
									A cold front moved through the area on Sunday and dropped temperatures from the mid 50's during the day to the teens at night. Wind chill temperatures were in the negative teens. Snow began between 1 and 3 pm on Sunday, accumulated to 1 to 3 inches, and ended in the evening. Winds of 50 to 65 mph knocked over a wall of an abandoned building onto a car in Pennington Gap, injuring a woman and her son. The combination of snow and wind produced blizzard conditions with near-zero visibility. (F34V, M08V injuries)
VAZ001 Southern Delmarva Peninsula	08	2000EST			0	?	4	0	Heavy Snow
									Snow occasionally mixed with rain and sleet began on Sunday evening and changed to all snow at night. Four to 8 inches of snow fell in Accomack County, creating near-zero visibility as winds gusted to 40 mph or more. Three to 4 foot drifts were reported.
VAZ003-004-006-007-008-009-010-012-013-014-015-016 All but far Southeastern Virginia	16	0500EST			0	?	5	0	Snow, Sleet, and Freezing Rain
									Sleet and freezing rain began early on Monday morning and accumulated to 2 to 3 inches of ice. The precipitation mixed with snow late in the afternoon and ended by midday on Tuesday. Snow accumulations were highest in the south-central areas: 10 to as much as 14 inches were reported at Farmville. Accumulations elsewhere were 6 to 10 inches. Schools, businesses and local government offices were closed, and there were numerous minor accidents.
VAZ001-002 Southeastern Virginia	16	1300EST			0	?	5	0	Freezing Rain, Sleet, and Snow
									Sleet and freezing rain began on Monday afternoon and mixed with rain at times during the night, then mixed with or changed to snow before ending on Tuesday evening. Significant snow accumulations were confined to the northern counties where up to 6 inches fell. Accumulating ice and gusty winds caused 80,000 homes to lose power. Three hundred phones were knocked out, as was cable to 35,000 users. All schools closed. There were frequent minor accidents, including a tractor-trailer that jackknifed near the Hampton Road Bridge-Tunnel and blocked traffic. No major accidents were reported.

STORM DATA AND UNUSUAL WEATHER PHENOMENA

FEBRUARY 1987

PLACE	DATE	TIME - LOCAL STANDARD	LENGTH OF PATH (MILES)	WIDTH OF PATH (YARDS)	NO. OF PERSONS		ESTIMATED DAMAGE		CHARACTER OF STORM
					KILLED	INJURED	PROPERTY	CROPS	
— VIRGINIA									
VAZ003-004-005-006-007-010-011-012 Northeastern Half of Virginia	22	1400EST			0	?	6	0	Heavy Snow
A mixture of sleet and freezing rain began on Sunday afternoon in the southwest areas and reached the northeast sections by 8 pm. The precipitation mixed with and then changed to a heavy wet snow in the northernmost counties before ending on Monday morning. Accumulations averaged 9 to 15 inches within an 80-mile radius of Washington, DC and 4 to 7 inches further south. Thunder and lightning were reported in the Washington suburbs. The wet snow caused widespread power outages from downed trees and tree limbs, especially pines. Some 250,000 homes were without power for 12 to 36 hours. Additionally, a water main break seriously dropped water pressure. Government employees were given the day off, and all schools were closed.									
VAZ008-009-013-014-015-016 Southwestern Virginia	27	0100EST			0	?	4	0	Heavy Snow
Snow began in southwestern Virginia early on Friday before mixing with and changing to rain early on Saturday morning. Snow accumulations averaged 4 to 8 inches with 10 to 20 inches reported in the higher elevations.									
45 WASHINGTON — NONE REPORTED									
46 WEST VIRGINIA									
WVZ001-004-005-007-008-009-010-011 Eastern Two-Thirds of State	08-09	overnight			0	0	?	?	Blizzard
Blizzard conditions engulfed most of the eastern two-thirds of the state overnight. A very intense low pressure system moved through, dropping temperatures from the mid 50's to the low teens in a matter of a few hours. The temperature drop was accompanied by wind gusts to near 50 mph and snow that reduced visibility to near zero. Wind chills dropped to a low of -30°F, and Charleston Police reported that streets became flash frozen from the rapid temperature drop. The heaviest snowfall reported was 14 inches in the town of Pickins in southern Randolph County.									
WVZ003-004 West-Central Part of State	17	morning			0	0	?	?	Ice Storm
An early morning ice storm closed Interstates and left nearly 8,000 homes including the Governor's Mansion without power. Police reported that at one time they had 45 accidents awaiting police reports to be made.									
WVZ003 Cabell County	18	1130EST			0	1	3	0	Ice
A 24-year-old man was injured when an 80-pound, 5-foot-long icicle fell from the East End Bridge onto his automobile in Huntington.									
WVZ009-010-011 Northeast	22	overnight			0	0	5	?	Heavy Snow
Heavy wet snow accumulating to as much as 16 inches at Canaan Valley and 15 inches at Charlestown caused what Potomac Edison called the worst damage to power lines in West Virginia since 1979. Nearly 10,000 residents were without power at the peak of the storm.									
47 WISCONSIN									
WVZ00E Eastern Wisconsin	08	0000-1800CST			0	0	5	0	High Winds
Strong winds ranging from 40 to 60 mph lashed the state, with the eastern half sustaining scattered damage. A wind gust of 86 mph was measured at the Rock County Airport in Janesville at 540 am cst. The high winds wiped over a 150 ton construction crane in Manitowoc (Manitowoc County), blew off a second-story front of a Town of Rochester (Racine County) office building and tore down a large roof at a lumber shed in Elkhorn (Walworth County). The wind also caused power outages to thousands of homes including 5,000 in Waukesha County and 1900 in West Allis (Milwaukee County). Numerous signs, trees and limbs were knocked down. Several of the large falling trees crushed over a dozen vehicles. Other damage included torn roofs and broken windows.									
— WISCONSIN									
WIZ013-017-020 Western Shore of Lake Michigan	08	1600-2200CST			0	0	6	0	Lake Erosion
Winds gusting over 50 mph whipped lake waves 8 to 12 feet high, causing extensive damage along the western shore of Lake Michigan. Hardest hit was the town of Pleasant Prairie in Kenosha County. Damage included \$260,000 to roads and breakwalls, another \$200,000 to the Trident Marina and private properties and \$100,000 to the Kemper recreation center. The waves hurled 20 to 60 pound pieces of ice onto the shore and moved a 1 ton ball 30 feet. In Milwaukee County, several finger piers at the South Shore Yacht Club were smashed, a bicycle path was wiped out and the McKinley Marina parking lot was seriously undermined. Other minor damage was reported in Racine, Ozaukee, Sheboygan and Manitowoc counties.									
WIZ001-002-003-004-005-007-010 Northern and Western Wisconsin	28-01	2100-1300CST			0	0	0	0	Heavy Snow
A winter storm dumped a 6 to 8 inch swath of snow along a 75-mile-wide axis from LaCrosse (LaCrosse County) to Rhinelander (Oneida County). Ashland and Iron counties also picked up 6 to 8 inches of snow from snow squalls off Lake Superior. The heaviest snow amounts were 8 inches in LaCrosse, Trempealeau, Ashland and Iron counties.									
48 WYOMING									
WYZ002 Northwest	01	1838 to 2215MST			0	0	4	0	High Wind (Chinook)
Radio station in Cody clocked a wind gust of 83 miles an hour along the south side of the city. Also, very strong gusts were observed at Cody airport and Powell, at 50 to 90 miles an hour. A garage and big overhead sign were blown down in Powell, and a camper was overturned and damage was done to city parks there as well.									
WYZ011-016 Central Plains and Laramie Valley	01	2100 to 2200MST			0	0	0	0	High Wind
Winds of 40 to 50 miles an hour were logged at Arlington, about 45 miles northwest of Laramie, with gusts of 60 miles an hour. Gusts to 55 miles an hour were observed over Casper Mountain, about 10 miles south of Casper.									
WYZ016 Laramie Valley	02	0500 to 1600MST			0	?	4	0	High Wind
Very strong wind of 35 to 50 miles an hour with gusts near 65 miles an hour raked through the Laramie Valley. Most of the damage was noted northwest of Laramie. These very strong winds blew down numerous power poles and shattered a few car and truck windows. A teacher at Valley View School, northwest of Laramie, reported that the winds between 0800 and 0900 MST were so strong that a wall of dust, straw and debris moved past the school.									
WYZ009-010-011 Wind River Mountains to Central Plains	14	0700 to 2030MST			0	?	?	0	Heavy Snow
A winter storm caused a few road closures between the Wind River Mountains and the eastern plains due to snow and blowing snow. More than five inches of snow and brisk winds were observed over South Pass, about 25 miles south of Lander. Sheriff deputies reported eight inches of new snow with hazardous driving conditions along the base of Casper Mountain. Six to 12 inches of snow was dumped on Matrons County ranches. At about 1030MST the sheriff department reported that two cars collided with a snowplow between Sweetwater Station and Muddy Gap, northwest of Rawlins, due to zero visibility in snow and blowing snow.									
WYZ002 Northwest	18	1700 to 2200MST			0	0	0	0	Heavy Snow
A small intense low pressure system combined with northerly upslope winds to produce a brief heavy snowfall of five to eight inches at Meeteetse. This was between 1700 and 2200 MST. Meeteetse is located about 28 miles southeast of Cody.									
WYZ001-009-010 Northwest Mountains to Wind River Basin	23-25	0230 to 0000MST			0	?	0	0	Heavy Snow
A moist storm developed over Nevada on the 23rd and moved over Wyoming through the 25th. This moist storm combined with favorable upslope flow and dumped from six to 26 inches of snow. The storm unloaded a new record snowfall total in Lander of over 26 inches. At one point heavy snow was observed in Lander on the 24th from 1900 to 2300 MST, where 8 inches of new snow fell. Some other individual snowfall reports were 11 inches at Rendezvous Peak with 10 to 14 inches at Crowheart and Riverton. The storm caused numerous road closures and frequent cancellation of schools and public meetings across the far west and Wind River Basin.									

STORM DATA AND UNUSUAL WEATHER PHENOMENA

FEBRUARY 1987

PLACE	DATE	TIME - LOCAL STANDARD	LENGTH OF PATH (MILES)	WIDTH OF PATH (YARDS)	NO. OF PERSONS		ESTIMATED DAMAGE		CHARACTER OF STORM
					KILLED	INJURED	PROPERTY	CROPS	
WYOMING									
MYZOSE Southeast Wyoming	26- 27	0800 to 0800MST			0	0	0	0	Heavy Snow
			A winter storm that dumped snow over western Wyoming from the 23rd to the 25th moved on to eastern Wyoming by the 26th. This storm unloaded six to 12 inches of snow from Casper to Cheyenne. Some individual snow amounts as of 0800 MST on the 27th were: 12 inches at Casper, seven at Cheyenne, six inches at Douglas, and nine inches at Lusk. The Wyoming Highway Patrol reported numerous slick roads over southeast Wyoming.						
49 ALASKA, Northern	NO REPORT RECEIVED								
49 ALASKA, Southern	NO REPORT RECEIVED								
49 ALASKA, Southeastern									
All Southeast Alaska	4					6			High Winds
			An intense October-type storm smashed into Southeast Alaska causing problems all over the Panhandle. Sitka and Juneau were hardest hit. A large section of the Mt. Edgecumbe Hospital in Sitka was damaged by hurricane and near-hurricane force winds. These same winds brought down 1000 feet of power lines which knocked out power from Sitka's main power source. Falling trees and flying debris added to the destruction totals. In Juneau, a taxiing aircraft was flipped over. The plane was badly damaged but no one in it was hurt. A falling tree also knocked out power to much of the city's northern reaches.						
50 HAWAII									
H1Z003 Maui	15	1010HST			0	0	4	0	Flash Flooding
			Heavy showers in the 8 to 10 inch range caused some flood damage in the Mana area on east Maui.						
51 PUERTO RICO	NONE REPORTED								
52 VIRGIN ISLANDS	NONE REPORTED								
53 PACIFIC	NONE REPORTED								

STORM SUMMARY

FEBRUARY 1987

TYPE	ALABAMA	ARIZONA	ARKANSAS	CALIFORNIA	COLORADO	CONNECTICUT	DELAWARE	FLORIDA	GEORGIA	IDAHO	ILLINOIS	INDIANA	IOWA	KANSAS	KENTUCKY	LOUISIANA	MAINE	MARYLAND & DC	MASSACHUSETTS	MICHIGAN	MINNESOTA	MISSISSIPPI	MISSOURI	MONTANA	NEBRASKA	NEVADA	NEW HAMPSHIRE
TORNADOES																											
Number																	6					9					
Days																	2					2					
Deaths																						6					
Injuries																	9					354					
Property Damage																	6					7					
Crop Damage																3											
HAIL																											
Deaths																											
Injuries																											
Property Damage																											
Crop Damage																											
THUNDERSTORM WINDS																											
Deaths																											
Injuries	1																1										
Property Damage	5							3									5						5				
Crop Damage																											
HIGH WINDS																											
Deaths																											
Injuries			3							4	7	5		4				5									
Property Damage		5	5																							3	1
Crop Damage			?									?														4	
LIGHTNING																											
Deaths																											
Injuries																											
Property Damage	4		4					5	5																		
Crop Damage																											
FLASH FLOODS																											
Deaths			3																								
Injuries			1																								
Property Damage			4																								
Crop Damage																											
FLOODS																											
Deaths																											
Injuries																											
Property Damage																											
Crop Damage																											
HEAVY SNOWSTORMS AND BLIZZARDS @																											
Deaths		1					1											1									
Injuries																											
Property Damage		4					6											6								3	
Crop Damage													4				5		5							1	
ICE STORMS #																											
Deaths																											
Injuries											1																
Property Damage											4																
Crop Damage															5												
HURRICANES AND TROPICAL STORMS																											
Deaths																											
Injuries																											
Property Damage																											
Crop Damage																											
ALL OTHERS																											
Deaths																											
Injuries																											
Property Damage																											
Crop Damage																											

SEE REFERENCE NOTES FOR STORM DAMAGE CATEGORIES

STORM SUMMARY

FEBRUARY 1987

TYPE	NEW JERSEY	NEW MEXICO	NEW YORK	NORTH CAROLINA	NORTH DAKOTA	OHIO	OKLAHOMA	OREGON	PENNSYLVANIA	RHODE ISLAND	SOUTH CAROLINA	SOUTH DAKOTA	TENNESSEE	TEXAS	UTAH	VERMONT	VIRGINIA	WASHINGTON	WEST VIRGINIA	WISCONSIN	WYOMING	ALASKA	HAWAII	PACIFIC	PUERTO RICO	VIRGIN ISLANDS	NATIONAL DEATH & INJURY TOTALS	
TORNADOES																												
Number							3							1														
Days							1							1														
Deaths																												6
Injuries							1																					364
Property Damage							6							5														
Crop Damage							?																					
HAIL																												
Deaths																												
Injuries																												
Property Damage																												
Crop Damage																												
THUNDERSTORM WINDS																												
Deaths														1														2
Injuries														1		1												4
Property Damage														5														
Crop Damage														?														
HIGH WINDS																												
Deaths													1															1
Injuries																			3								7?	
Property Damage		5		6	5				?					6				4			5							
Crop Damage									5		4										4							
LIGHTNING																												
Deaths																												
Injuries																												
Property Damage																												
Crop Damage																												
FLASH FLOODS																												
Deaths																												3
Injuries																												1
Property Damage																								4				
Crop Damage																												
FLOODS																												
Deaths							1																					2
Injuries								1																				?
Property Damage																												
Crop Damage																												
HEAVY SNOWSTORMS AND BLIZZARDS @																												
Deaths																												3
Injuries																												3?
Property Damage	4	5	5	5		?	?			5		4			1	5	2			5								
Crop Damage		?					?										6			?								
ICE STORMS #																												
Deaths																												2
Injuries																												1
Property Damage																												
Crop Damage			5	6																								
HURRICANES AND TROPICAL STORMS																												
Deaths																												
Injuries																												
Property Damage																												
Crop Damage																												
ALL OTHERS																												
Deaths																												
Injuries																												
Property Damage																												
Crop Damage							6							6														

SEE REFERENCE NOTES FOR STORM DAMAGE CATEGORIES

REFERENCE NOTES

† Storm damage categories are from

1 to 9 as follows:

- 1 Less than \$50
- 2 \$50 to \$500
- 3 \$500 to \$5,000
- 4 \$5,000 to \$50,000
- 5 \$50,000 to \$500,000
- 6 \$500,000 to \$5 Million
- 7 \$5 Million to \$50 Million
- 8 \$50 Million to \$500 Million
- 9 \$500 Million to \$5 Billion

- * Miles instead of yards
- ** Yards instead of miles
- @ Includes heavy sleet storm
- # Freezing drizzle and freezing rain, commonly known as glaze
- ≠ Not received or incomplete
- o/c Under Estimated Damage, Property/Crops, indicates crop damage amount is included in the figure given

Definition of Fujita Tornado Scale (F scale)

(F0) Gale tornado (40-72 mph): Light damage
Some damage to chimneys; break branches off trees; push over shallow-rooted trees; damage sign boards.

(F1) Moderate tornado (73-112 mph): Moderate damage
The lower limit (73 mph) is the beginning of hurricane wind speed; peel surface off roofs; mobile homes pushed off foundations or overturned; moving autos pushed off the roads.

(F2) Significant tornado (113-157 mph): Considerable damage
Roofs torn off frame houses; mobile homes demolished; boxcars pushed over; large trees snapped or uprooted; light-object missiles generated.

(F3) Severe tornado (158-206 mph): Severe damage
Roofs and some walls torn off well-constructed houses; trains overturned; most trees in forest uprooted; heavy cars lifted off ground and thrown.

(F4) Devastating tornado (207-260 mph): Devastating damage
Well-constructed houses leveled; structure with weak foundation blown off some distance; cars thrown and large missiles generated.

(F5) Incredible tornado (261-318 mph): Incredible damage
Strong frame houses lifted off foundations and carried considerable distance to disintegrate; automobile-sized missiles fly through the air in excess of 100 m; trees debarked; incredible phenomena will occur.

(F6-F12) (319 mph to Mach 1, the speed of sound):
The maximum wind speeds of tornadoes are not expected to reach the F6 wind speeds.

(F0+F1) *Weak Tornado*

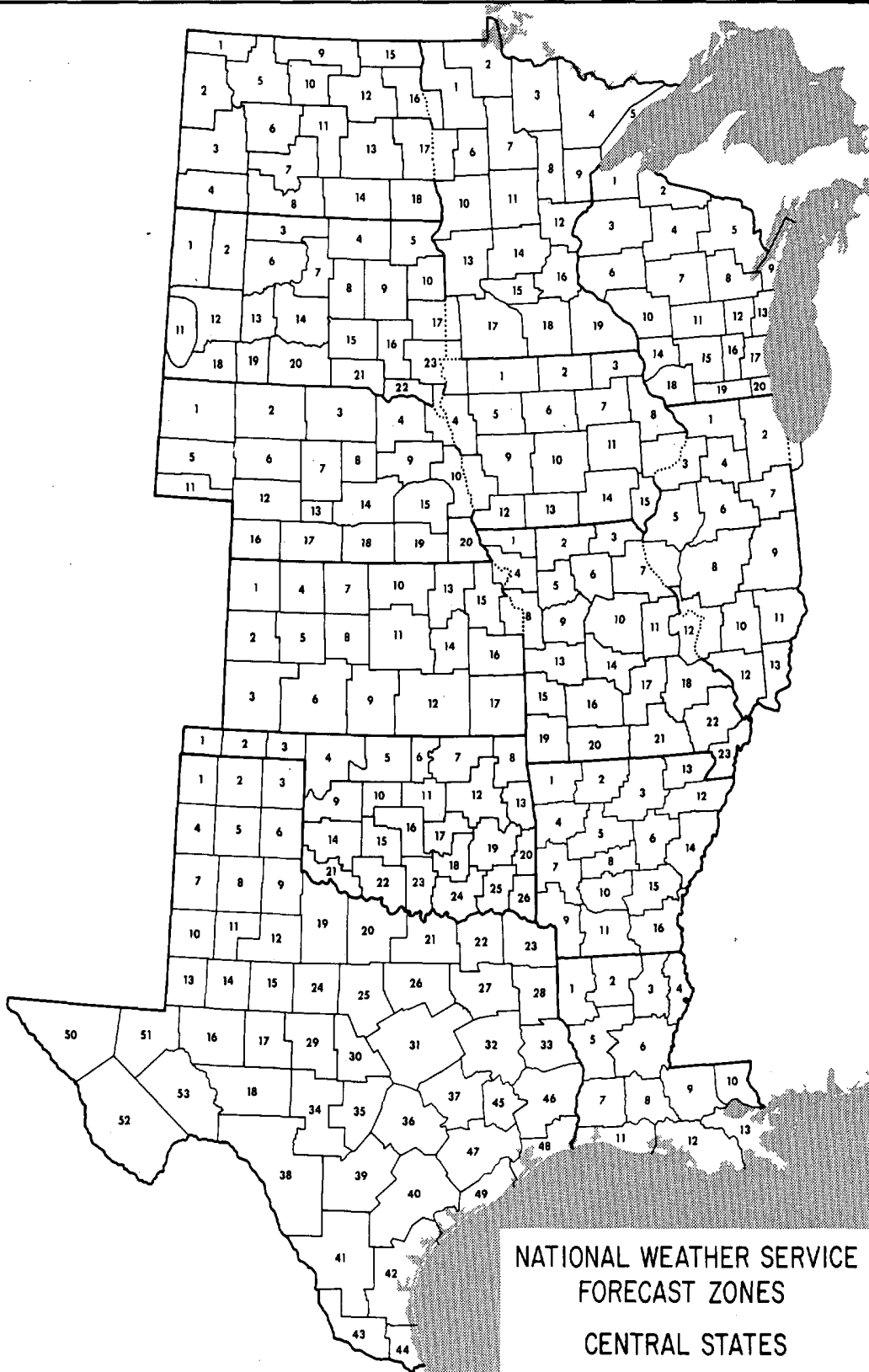
(F2+F3) *Strong Tornado*

(F4+F5) *Violent Tornado*

From J. Atmos. Sci., August 1981, p. 1517-1519



USCOMM-NOAA-ASHEVILLE, N.C. 1987-2075



NATIONAL WEATHER SERVICE
 FORECAST ZONES
 CENTRAL STATES

Zone maps appear in Storm Data issues as follows:
 EASTERN STATES - January, April, July, and October
 CENTRAL STATES - February, May, August, and November
 WESTERN STATES - March, June, September, and December

ERRATA

TORNADOES, TORNADO DAYS, AND DEATHS BY STATE AND NATION, 1953-86

STATE	TORNADOES							DAYS		DEATHS		
	TOTAL	AVERAGE	GREATEST	YEAR	LEAST	YEAR	PER # 10,000 SQ. MI.	TOTAL	AVERAGE	TOTAL	AVERAGE	PER # 10,000 SQ. MI.
ALABAMA	742	22	45	1983+	5	1956	4.23	389	11	215	6	42
ALASKA	1	0	1	1959	0	1986+	.00	1	0	0	0	0
ARIZONA	118	3	17	1972	0	1965	.30	95	3	3	0	0
ARKANSAS	711	21	78	1982	2	1969+	3.94	321	9	151	4	28
CALIFORNIA	134	4	14	1982	0	1968+	.25	100	3	0	0	0
COLORADO	662	19	58	1982	1	1959	1.87	410	12	2	0	0
CONNECTICUT	46	1	8	1973	0	1986+	2.70	42	1	4	0	8
DELAWARE	30	1	5	1975	0	1986+	4.29	27	1	2	0	10
DISTRICT OF COLUMBIA	0	0	0		0		.00	0	0	0	0	0
FLORIDA	1488	44	97	1975	10	1956	7.47	946	28	61	2	10
GEORGIA	699	21	46	1974+	7	1960	3.49	393	12	72	2	12
HAWAII	24	1	4	1971	0	1984+	1.10	20	1	0	0	0
IDAHO	59	2	10	1986+	0	1977+	.21	49	1	0	0	0
ILLINOIS	903	27	107	1974	4	1953	4.71	419	12	147	4	26
INDIANA	689	20	48	1973	4	1984	5.58	336	10	206	6	57
IOWA	990	29	61	1984	7	1956	5.17	444	13	60	2	11
KANSAS	1454	43	97	1955	14	1976	5.20	680	20	168	5	20
KENTUCKY	275	8	34	1974	0	1953	2.00	160	5	101	3	25
LOUISIANA	735	22	64	1983	3	1955	4.46	450	13	93	3	19
MAINE	74	2	11	1971	0	1985+	.66	65	2	1	0	0
MARYLAND	88	3	10	1975	0	1986+	2.45	68	2	2	0	2
MASSACHUSETTS	117	3	12	1958	0	1982+	4.17	86	3	99	3	120
MICHIGAN	546	16	39	1974	2	1959	2.76	317	9	234	7	40
MINNESOTA	615	18	34	1968	5	1972	2.15	346	10	76	2	9
MISSISSIPPI	730	21	44	1973	1	1979	4.50	386	11	335	10	70
MISSOURI	960	28	79	1973	6	1953	4.05	422	12	132	4	19
MONTANA	135	4	13	1971	0	1974+	.27	103	3	1	0	0
NEBRASKA	1209	36	78	1975	10	1966	4.60	586	17	49	1	6
NEVADA	23	1	4	1964	0	1985+	.06	22	1	0	0	0
NEW HAMPSHIRE	67	2	9	1963	0	1985+	2.12	58	2	0	0	0
NEW JERSEY	52	2	8	1973	0	1984+	1.95	44	1	0	0	0
NEW MEXICO	258	8	18	1972	0	1953	.62	200	6	3	0	0
NEW YORK	137	4	9	1986	0	1953	.81	107	3	6	0	1
NORTH CAROLINA	414	12	38	1973	2	1970	2.31	257	8	70	2	13
NORTH DAKOTA	607	18	52	1976	2	1961	2.53	338	10	21	1	3
OHIO	491	14	43	1973	2	1984	3.50	252	7	170	5	41
OKLAHOMA	1879	55	107	1957	21	1978	7.90	767	23	199	6	28
OREGON	31	1	4	1984	0	1986+	.09	27	1	0	0	0
PACIFIC ISLANDS	2	0	1	1981+	0	1986+	-	2	0	0	0	0
PENNSYLVANIA	302	9	33	1985+	0	1959	1.96	197	6	73	2	16
PUERTO RICO	9	0	2	1979	0	1986+	.77	8	0	0	0	0
RHODE ISLAND	5	0	3	1986	0	1984+	1.21	4	0	0	0	0
SOUTH CAROLINA	313	9	23	1973	1	1986+	2.96	208	6	39	1	13
SOUTH DAKOTA	882	26	64	1965	1	1958	3.37	418	12	8	0	1
TENNESSEE	385	11	44	1974	1	1962	2.68	208	6	75	2	18
TEXAS	4224	124	232	1967	32	1953	4.65	1664	49	402	12	15
UTAH	46	1	6	1984	0	1985+	.16	38	1	0	0	0
VERMONT	27	1	5	1962	0	1985+	.82	24	1	0	0	0
VIRGINIA	193	6	22	1975	1	1982+	1.39	129	4	16	0	4
VIRGIN ISLANDS	2	0	1	1979+	0	1986+	-	2	0	0	0	0
WASHINGTON	46	1	4	1983+	0	1977+	.20	39	1	6	0	1
WEST VIRGINIA	68	2	6	1980+	0	1984+	.83	53	2	2	0	1
WISCONSIN	646	19	43	1980	3	1953	3.38	346	10	75	2	13
WYOMING	313	9	42	1977	0	1970	.94	214	6	2	0	0
TOTAL: UNITED STATES	25474*	749	1102	1973	421	1953	2.07	57868	170	3381	99	9

+ ALSO IN EARLIER YEAR(S).
* CORRECTED FOR BOUNDARY-CROSSING TORNADOES.
& TORNADO DAYS FOR COUNTRY AS A WHOLE.

MEAN ANNUAL TORNADOES PER
10,000 SQUARE MILES.
NUMBER OF DEATHS PER 10,000
SQUARE MILES.

National Oceanic and Atmospheric Administration
NATIONAL CLIMATIC DATA CENTER

World's Largest Weather Records Archive

WHY DO YOU NEED WEATHER DATA?



- *Litigation*
- *Insurance Claims*
- *Environmental Studies*
- *Engineering Projects*
- *University Research*
- *Personal Curiosity*



WHAT TYPE OF INFORMATION DO YOU NEED?



- *Station Records*
- *Monthly/Annual Summaries*
- *Long Term Climatic Studies*
- *Surface or Upper Air Charts*



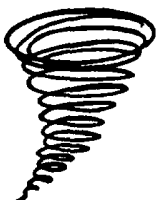
WHICH OUTPUT MEDIA IS BEST FOR YOU?



- *Publications*
- *Paper Copies*
- *Charts*
- *Microfiche/Microfilm*
- *Floppy Disk*
- *Computer Tape*



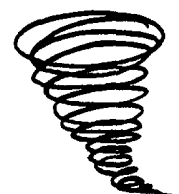
Call or write NCDC and explain your weather related problem.
Our meteorologists will provide the best possible solution.



NATIONAL CLIMATIC DATA CENTER

Federal Building, Asheville, N. C. 28801-2696

Phone (704) 259-0682 or (704)-CLIMATE



DEPARTMENT OF COMMERCE
NATIONAL OCEANIC AND ATMOSPHERIC ADMINISTRATION
NATIONAL ENVIRONMENTAL SATELLITE, DATA, AND INFORMATION SERVICE
NATIONAL CLIMATIC DATA CENTER
FEDERAL BUILDING
ASHEVILLE, N.C. 28801

**BULK RATE
POSTAGE & FEES PAID**
United States Department Of Commerce
NOAA Permit No. G - 19