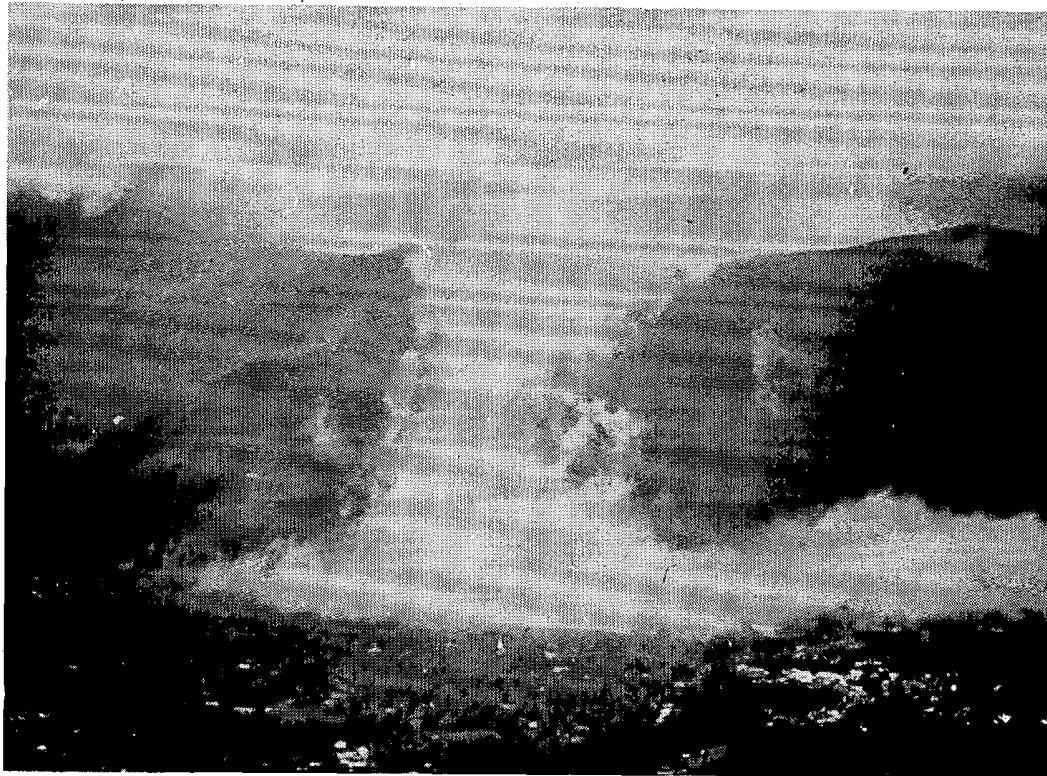


FEBRUARY 1985

VOLUME 27

NUMBER 2

STORM DATA



"I CERTIFY THAT THIS IS AN OFFICIAL PUBLICATION OF THE
NATIONAL OCEANIC AND ATMOSPHERIC ADMINISTRATION
AND IS COMPILED FROM INFORMATION RECEIVED AT THE
NATIONAL CLIMATIC DATA CENTER, ASHEVILLE, N.C. 28801"

Kenneth D. Haden

DIRECTOR
NATIONAL CLIMATIC DATA CENTER

noaa

NATIONAL OCEANIC AND
ATMOSPHERIC ADMINISTRATION

NATIONAL ENVIRONMENTAL SATELLITE,
DATA, AND INFORMATION SERVICE

NATIONAL CLIMATIC DATA CENTER,
ASHEVILLE, N.C.

C O N T E N T S

	<u>Page</u>
Outstanding Storms of the Month.....	3
Storm Data and Unusual Weather Phenomena.....	11
Storm Summary.....	22
Reference Notes.....	23
"F" Scale Definitions.....	23

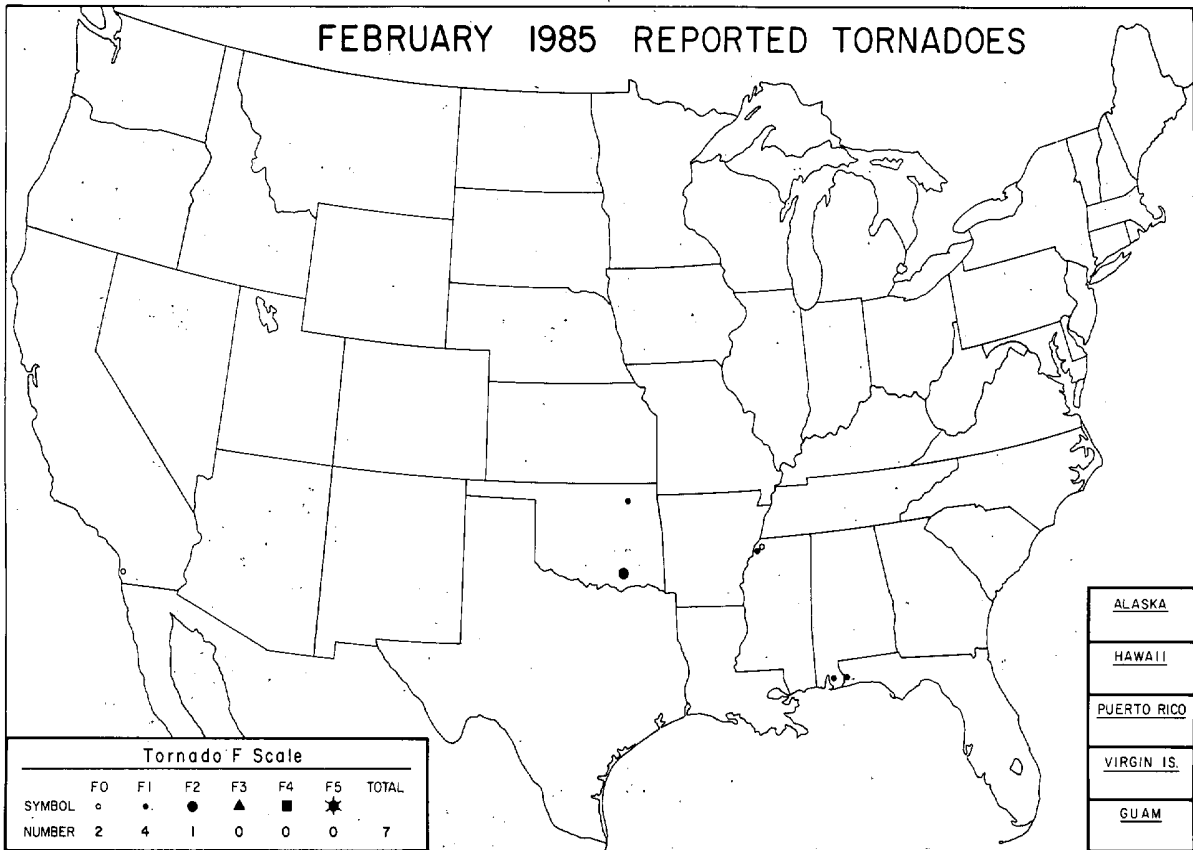
Cover: What could have been mistaken as a tornado was nothing more than condensation that formed in the updraft of a cumulus congestus when cool air funneled through a mountain gap into the Swannanoa Valley of western North Carolina on February 2, 1985 (see Updraft Cloud over Black Mountain, North Carolina, page 10). ---Photo by Grant W. Goodge, National Climatic Data Center.

NOTE: The section on Outstanding Storms of the Month is prepared by Professor T. Theodore Fujita, editor, and Duane J. Stiegler, associate editor, University of Chicago. The narrative descriptions of Storms by State and Summaries of Hurricanes and Tropical Storms are prepared by the National Weather Service. The National Climatic Data Center compiles the statistics on deaths, injuries, and damage. This publication contains our best information on Storms, but, due to the difficulties inherent in collection of this type of data, it is not all-inclusive. Late reports and corrections will be carried quarterly.

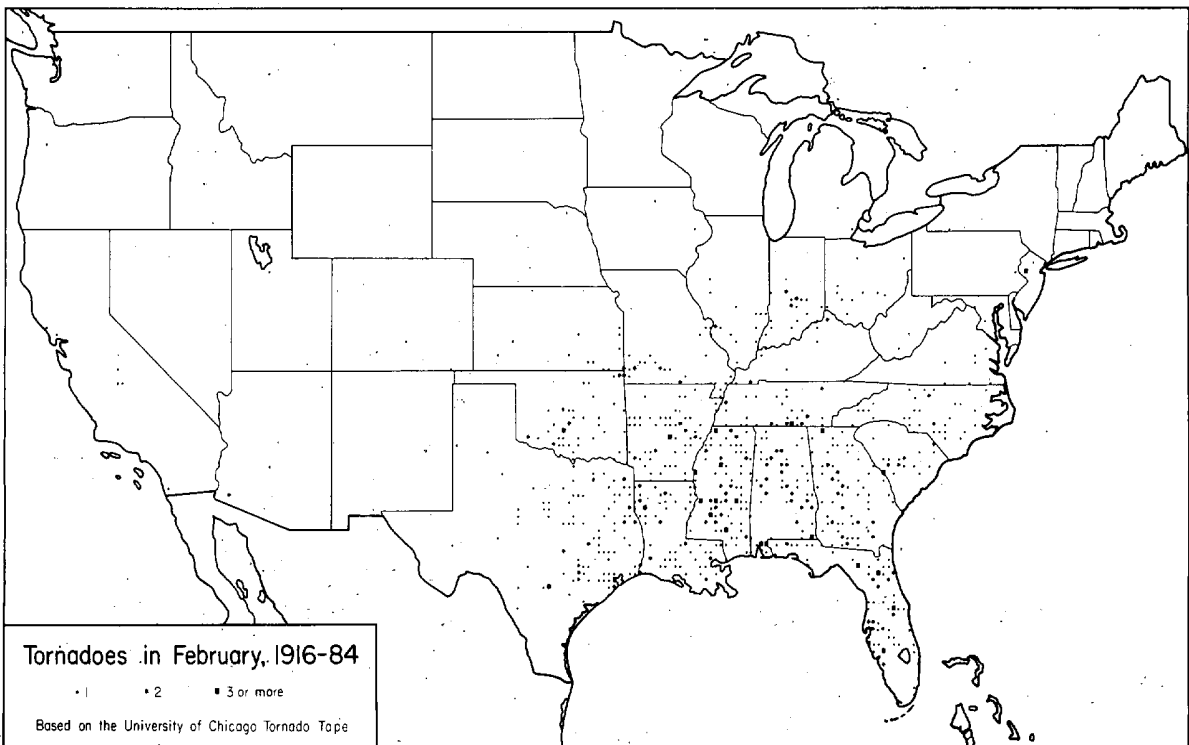
STORM DATA - (ISSN 0039-1972) is published monthly. Subscription, pricing, and ordering information is available from:

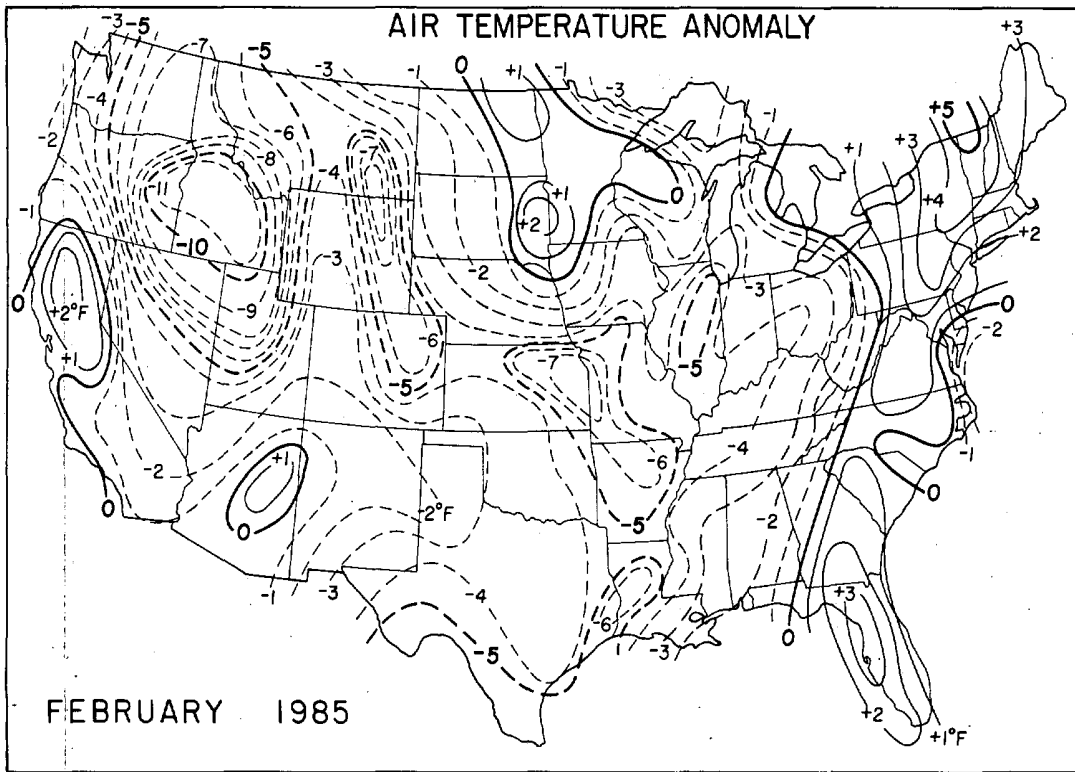
National Climatic Data Center, National Environmental Satellite, Data, and Information Service, NOAA, Federal Building, Asheville, NC 28801-2696.

OUTSTANDING STORMS OF THE MONTH



● COMPLETE REPORT RECEIVED	● 1AL	● 7DE	● 14KS	● 21MN	● 28NJ	● 33OH	● 39SD	● 44VA	● 49AK(SE)
◐ PRELIMINARY REPORT RECEIVED	● 2AZ	● 8FL	● 15KY	● 22MS	● 29NM	● 34OK	● 40TN	● 45WA	● 50HI
○ REPORT NOT RECEIVED	● 3AR	● 9GA	● 16LA	● 23MO	● 30NY(O)	● 35OR	● 41TX(N)	● 46WV	● 51PR
(N) northern (W) western	● 4CA(N)	● 10ID	● 17ME	● 24MT	● 30NY(C)	● 36PA(E)	● 41TX(S)	● 47WI	● 52VI
(S) southern (C) central	● 4CA(S)	● 11IL	● 18MD	● 25NE	● 30NY(W)	● 36PA(W)	● 41TX(W)	● 48WY	● 53PC
(E) eastern (O) coastal	● 5CO	● 12IN	● 19MA	● 26NV	● 31NC	● 37RI	● 42UT	○ 49AK(N)	
(SE) southeastern	● 6CT	● 13IA	● 20MI	● 27NH	● 32ND	● 38SC	● 43VT	○ 49AK(S)	





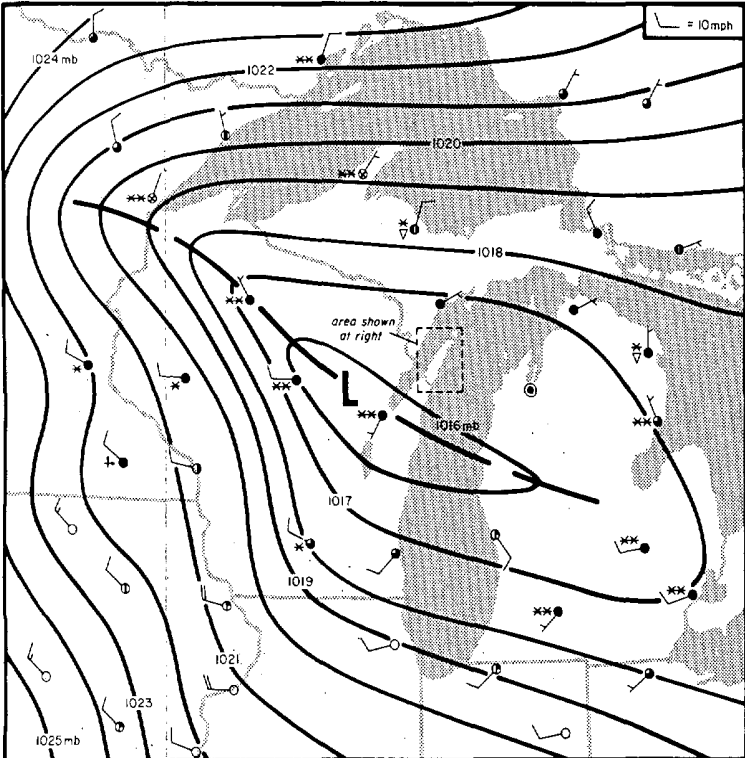
---Data base from NOAA/USDA Joint Agricultural Weather Facility.

1. HEAVY SNOW over DOOR COUNTY, WISCONSIN on February 5-7, 1985

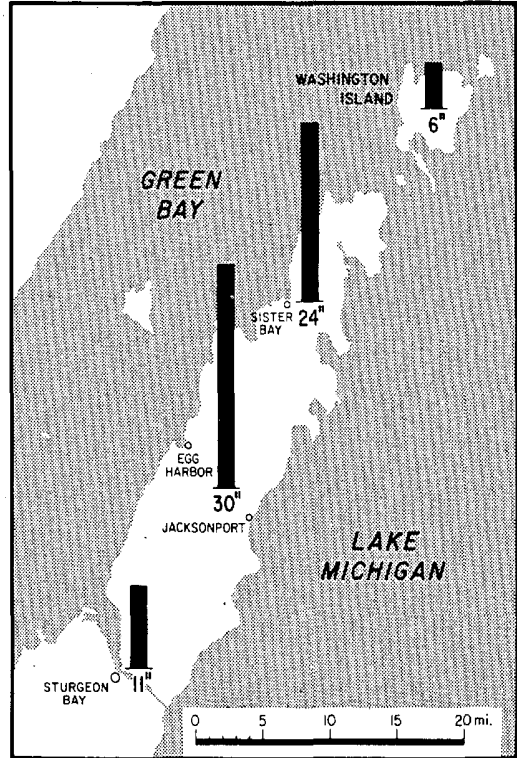
Persistent, lake-effect snow squalls beginning the evening of February 5th and continuing into the morning of February 7th left up to 30 inches of snow over the Door Peninsula of Wisconsin between Green Bay and Lake Michigan. The localized snow (see map below right) accumulated when the squalls formed on light, northeast winds off of Lake Michigan as a weak low pressure system moved slowly eastward along a trough to the south (see map below left). ---Map by University of Chicago.

SURFACE WINDS AND PRESSURE

1800 CST FEBRUARY 6, 1985



SNOWFALL OVER THE DOOR PENINSULA FEB. 5-7, 1985

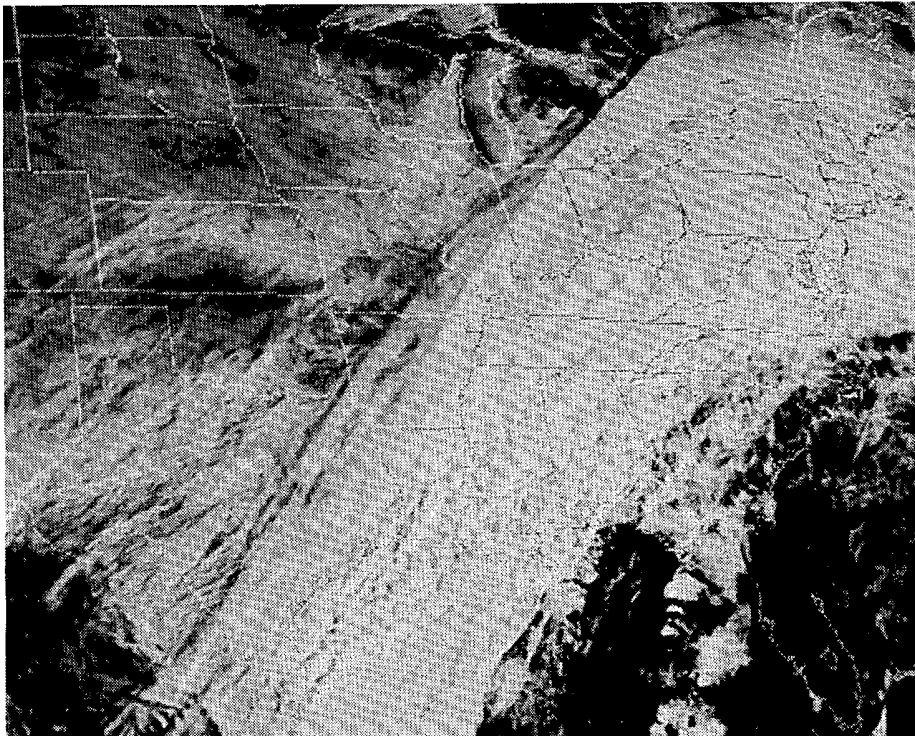


2. WINTER STORM in the SOUTH on February 1-2, 1985

A winter storm with freezing rain, sleet and snow moved through the southern states on February 1st and 2nd, leaving an icy glaze over northern Louisiana, Mississippi, Alabama and southern Tennessee, while mostly snow fell in Kentucky and West Virginia. The ice was especially damaging, causing numerous traffic accidents, and downing trees and tree limbs that fell onto power lines, resulting in widespread power outages.



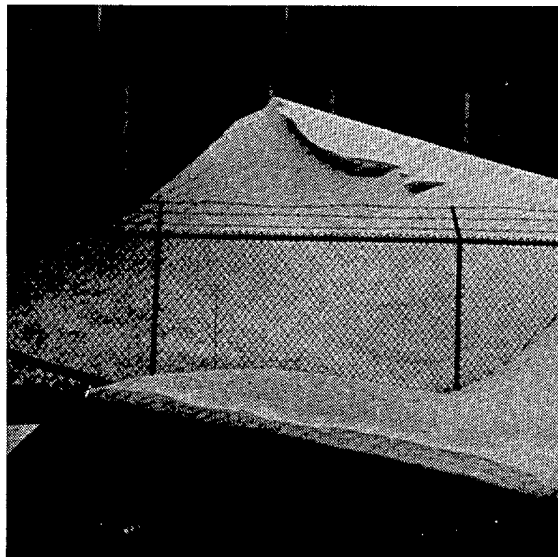
LEFT: Electric crews in Decatur, Alabama are kept busy making repairs to ice-laden power lines that were downed by falling trees and tree limbs. ---Photo by Gary Lloyd.
RIGHT: Ice-coated pine limbs litter a Decatur driveway. ---Photo by Glenn Baeske.
Both photos from the Decatur Daily.



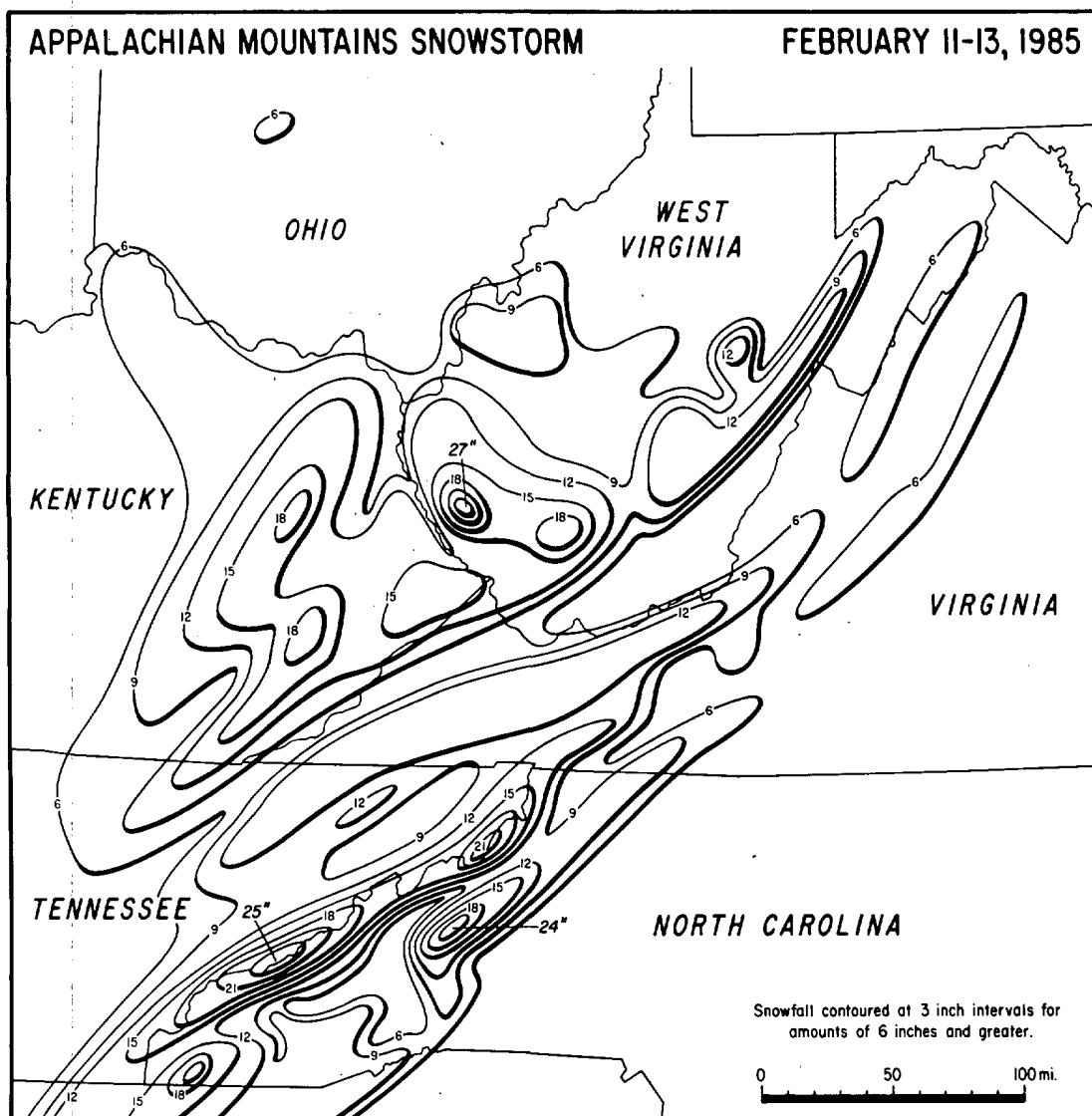
A visible image of the storm taken from the GOES 6 satellite at 1531 GMT on February 1st. ---Photo from NESDIS.

3. SNOWSTORM in the APPALACHIAN MOUNTAINS on February 11-13, 1985

The heaviest snowstorm to hit the Appalachians this year left snowfall amounts exceeding 2 feet over many of the mountain ridges as it swept over the region late on February 11th to the morning of the 13th. Snowfall was highly variable due to topography, especially in the southern areas where the elevation determined the precipitation type (rain vs. snow) during some portion of the storm period. Blowing snow from high winds created drifts 8 to 10 feet deep in North Carolina, and up to 20 feet deep in Kentucky. Numerous roads were closed, stranding many people in or away from their homes.

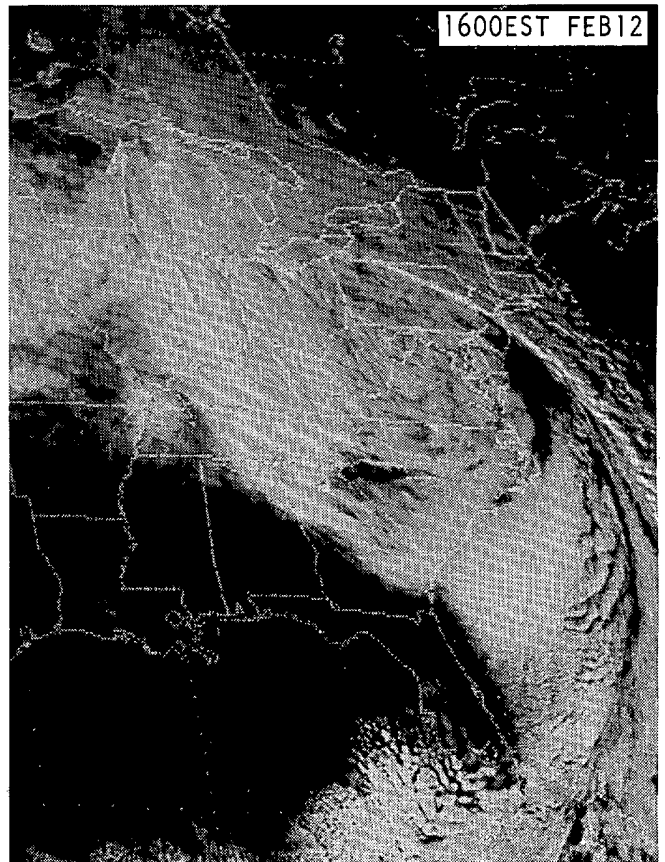
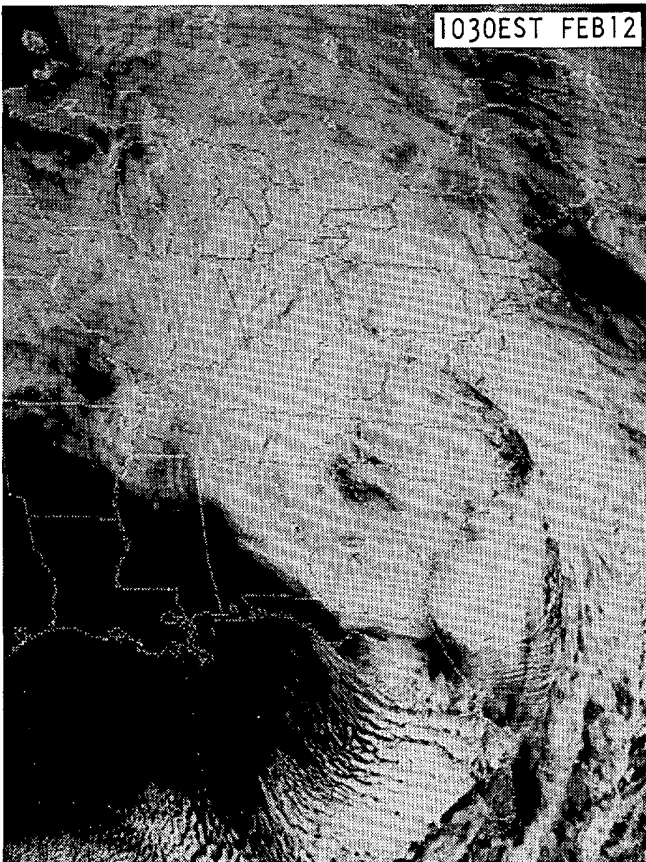
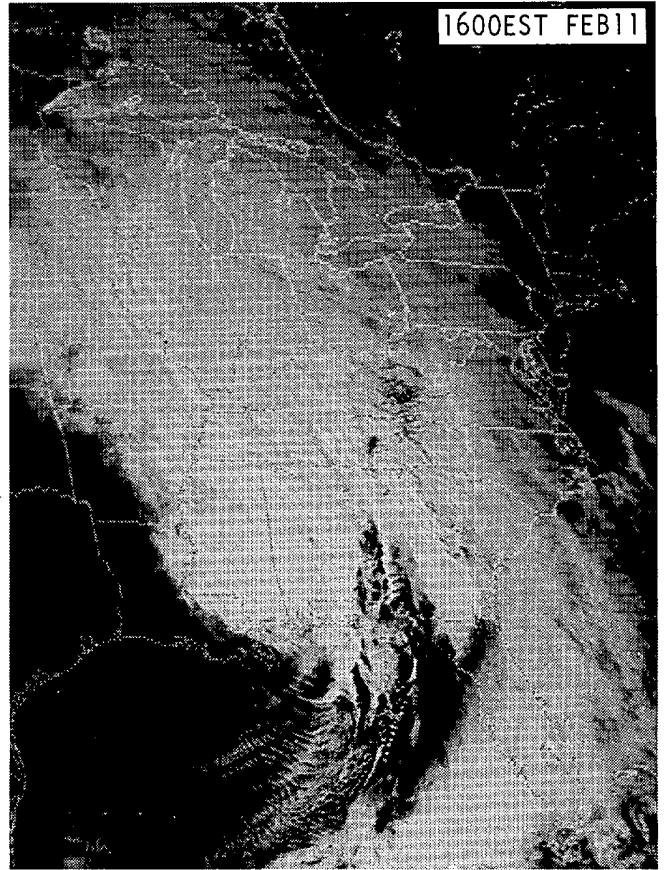
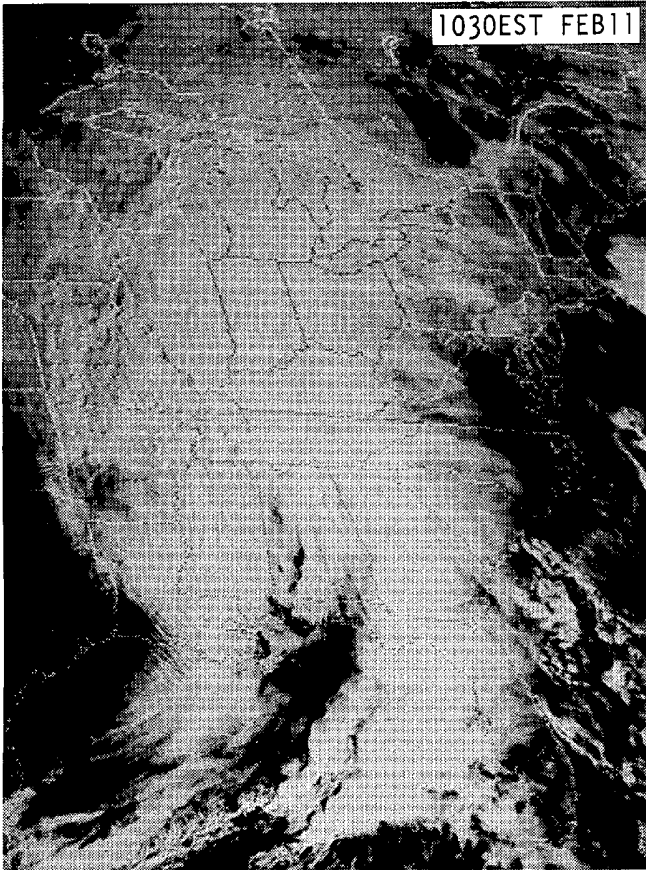


A drift at Sugar Grove, Virginia, in the extreme west part of the state.



---Mapped by the University of Chicago; data supplied by NWSFOs at Louisville, KY; Raleigh, NC; Cleveland, OH; Memphis, TN and Charleston, WV; with additional data and photo supplied by the Dept. of Environmental Sciences, University of Virginia. Analysis is based largely on topography.

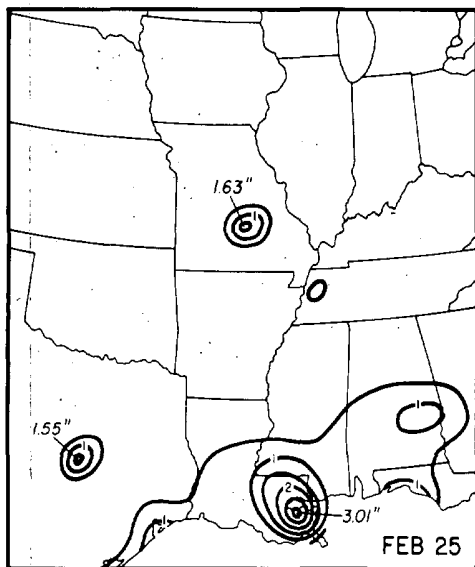
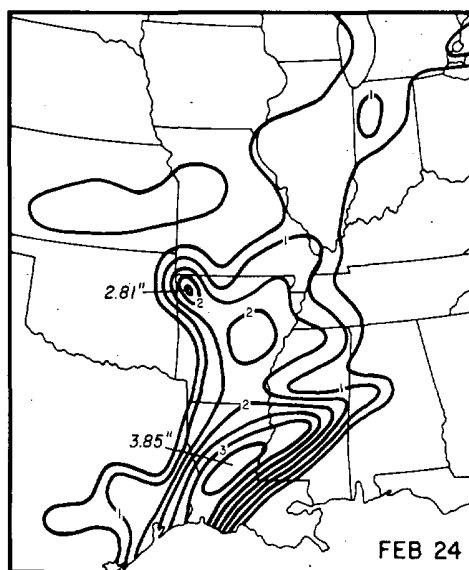
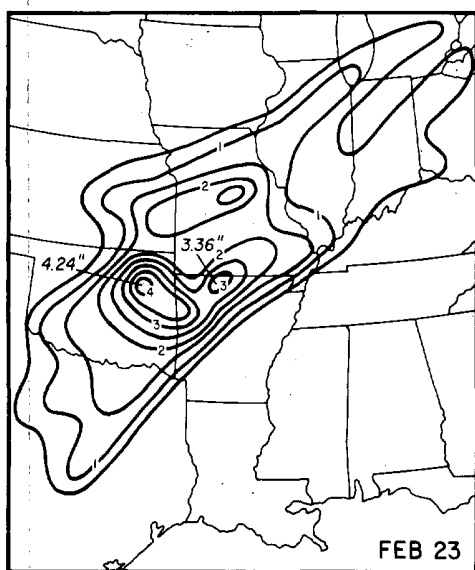
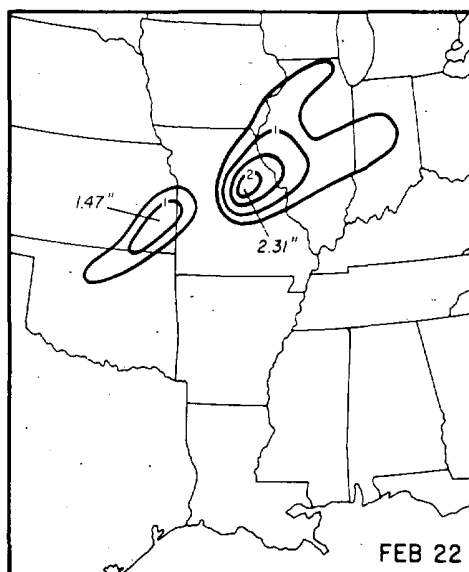
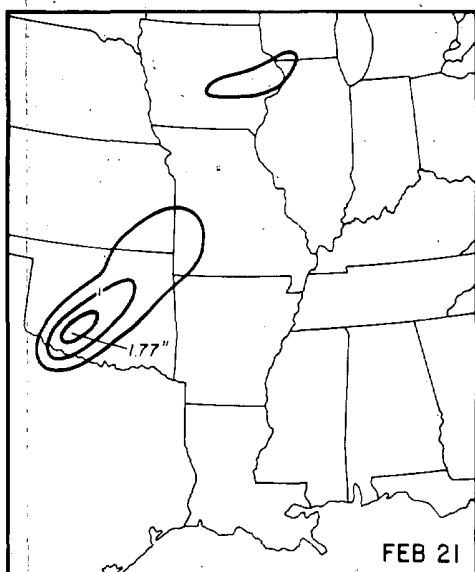
SNOWSTORM in the APPALACHIAN MOUNTAINS ---- continued



GOES 6 satellite, visible images showing the storm develop a comma-shaped cloud mass over the 2-day period of heavy snowfall. ---Photos from NESDIS.

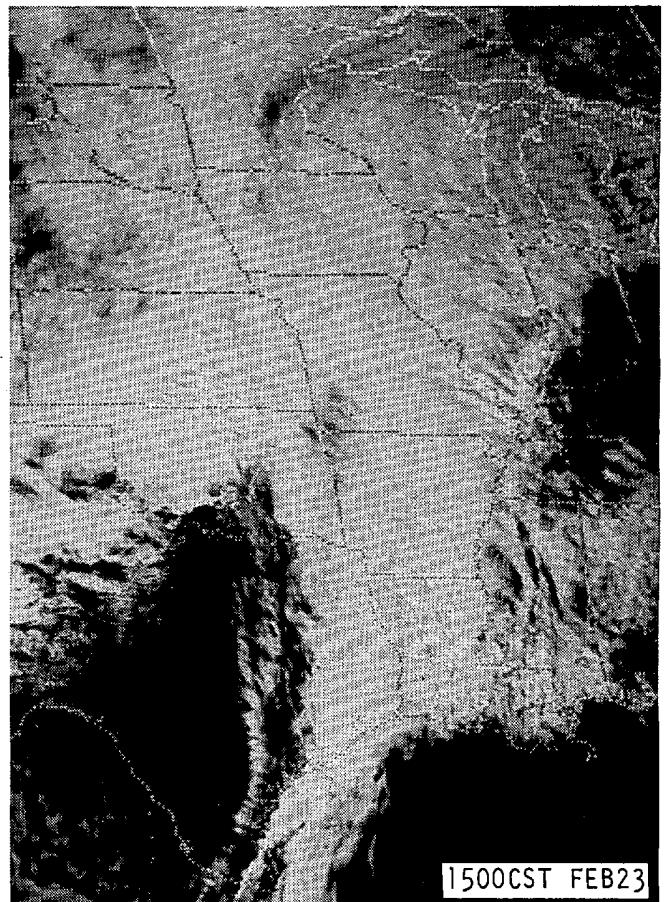
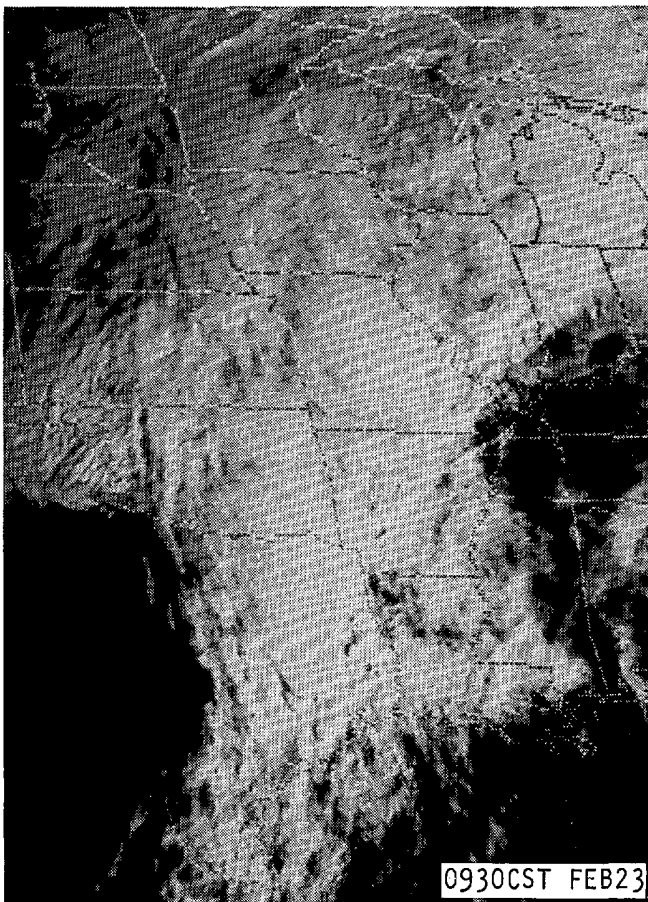
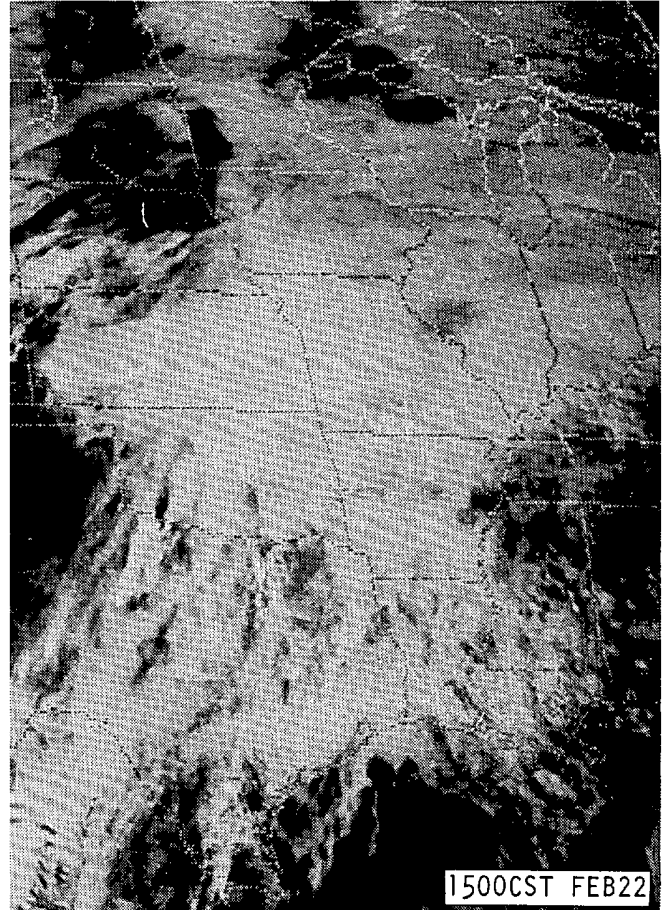
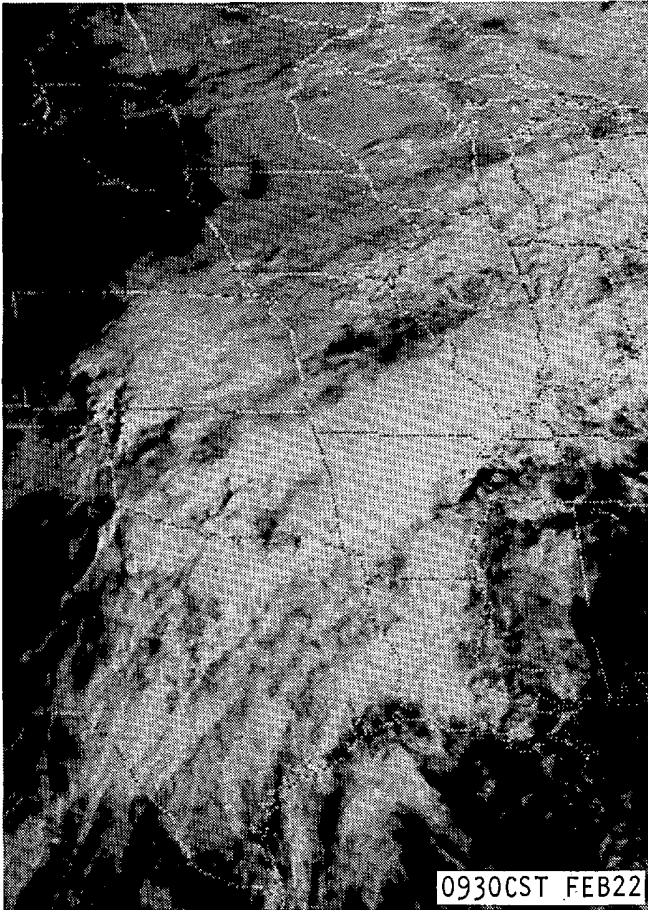
4. HEAVY RAINS in the CENTRAL U.S. on February 21-25, 1985

A significant storm system produced heavy rain over much of the central U.S. in late February. The heaviest rain occurred over portions of Oklahoma and Arkansas on the 22nd and 23, and continued into Louisiana on the 23rd and 24th. Widespread flash flooding resulted, causing one death and driving many people from their homes.



A 5-day sequence of 24-hour precipitation totals ending at 0600 CST on the dates shown. Contours are at 0.5 inch intervals, beginning at 0.5 inch. ---Data from NMC, Washington, DC.

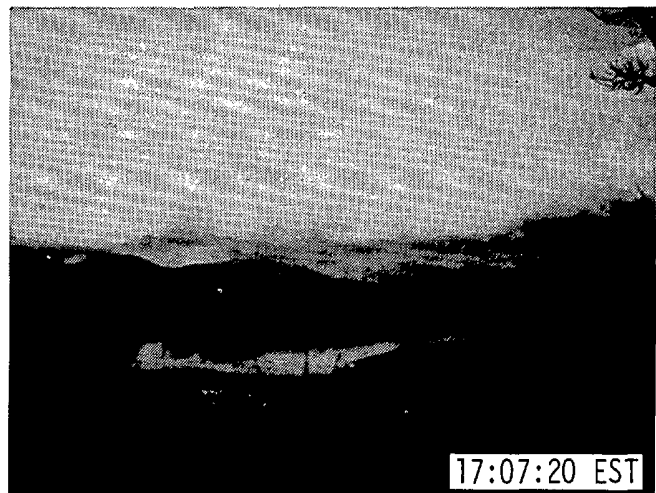
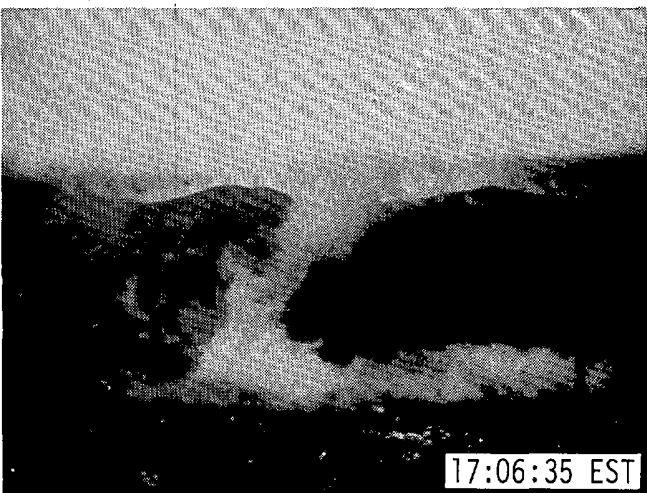
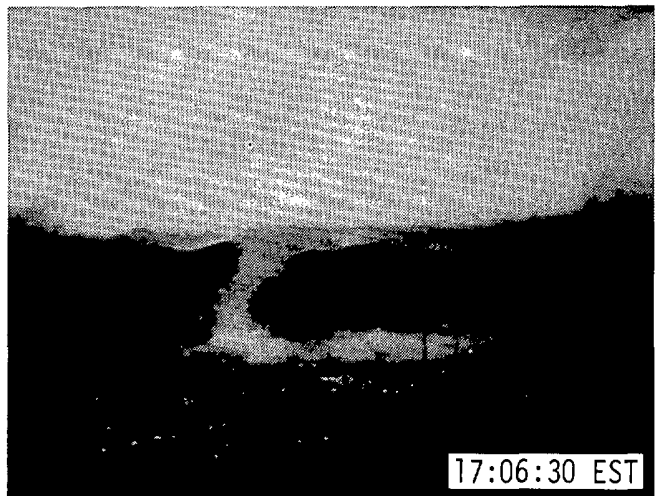
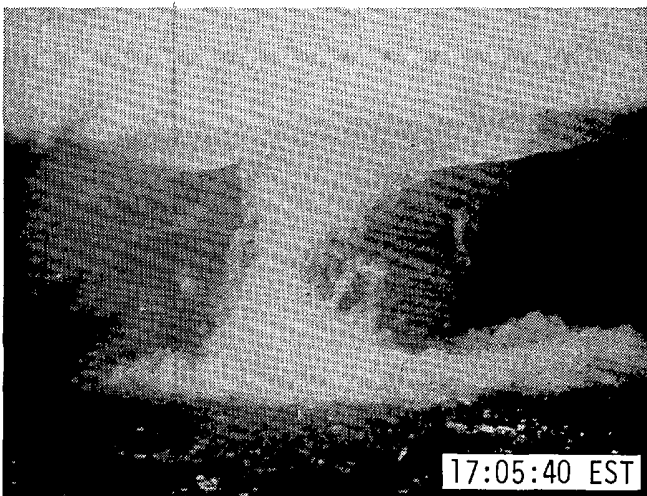
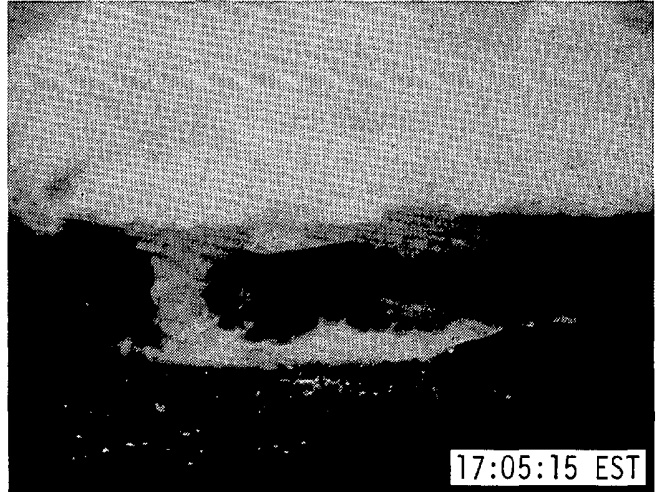
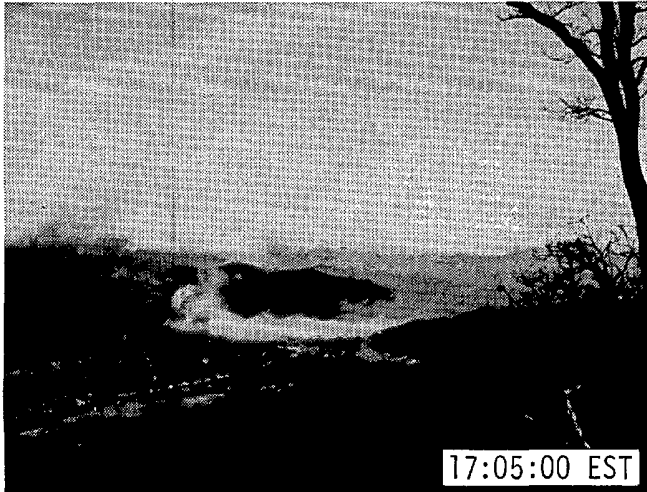
HEAVY RAINS in the CENTRAL U.S. ---- continued



GOES 6 satellite, visible images taken during the two days of heaviest rains in Oklahoma and Arkansas. ---Photos from NESDIS.

5. UPDRAFT CLOUD over BLACK MOUNTAIN, NC on February 2, 1985

On February 2nd, an unusual event over the Swannanoa Valley at Black Mountain, North Carolina was observed and photographed by Grant W. Goodge of the National Climatic Data Center. The valley was warmer than surrounding areas due to a break in the overcast that prevailed over the region. A cloud in a shape resembling a tornado then formed in the updraft of a cumulus congestus when cool air accompanied by ground level stratus moved northwestward through a mountain gap at the east end of the valley. The almost instantaneous condensation column extended 2,000 feet in depth and exhibited a slight turning. However, it lasted less than 2 minutes. The stratus continued to enter the valley for at least 5 minutes after the updraft cloud had dissipated, at which time the photographers view became obscured by orographic cumulus during a cold front passage. Views in the photos are looking northeast.



STORM DATA AND UNUSUAL WEATHER PHENOMENA

FEBRUARY 1985

PLACE	DATE	TIME - LOCAL STANDARD	LENGTH OF PATH (MILES)	WIDTH OF PATH (YARDS)	NO. OF PERSONS		ESTIMATED DAMAGE		CHARACTER OF STORM
					KILLED	INJURED	PROPERTY	CROPS	

PLACE	DATE	TIME - LOCAL STANDARD	LENGTH OF PATH (MILES)	WIDTH OF PATH (YARDS)	NO. OF PERSONS		ESTIMATED DAMAGE		CHARACTER OF STORM
					KILLED	INJURED	PROPERTY	CROPS	

1 ALABAMA

North Alabama	01-02.								Winter Storm	
<p>A major winter storm, one of the worst on record, moved into northwest Alabama during the early morning of February 1. Some icing on roads and bridges was reported in Lauderdale County before midnight on January 31 with the brunt of the storm moving in just after midnight. The freezing and frozen precipitation continued to spread southeast, and by noon, Friday, February 1 had glazed roads as far southeast as Cullman. By evening, the fringes of the storm reached as far southeast as the Birmingham area and forced the closing of the entire interstate system in the metro area. The northwest corner of the state was the hardest hit with up to 11 inches of ice reported in Lauderdale County. Officials in Florence reported that all streets in that city were closed for the first time in its history. Traffic accidents were numerous and hundreds of motorists were stranded during the height of the storm. Some 600 motorists were reported stranded on I-65 between Cullman and Birmingham alone at one time Friday evening, but all were eventually taken to shelter. Emergency Management officials had shelter areas prepared after receiving early forecasts of the storm. Most area residents were also alerted to the impending storm by the extensive news coverage of the early forecasts, and grocery stores were jammed with shoppers that were stocking up on food supplies. Several people were injured in sledding accidents and from slipping and falling while trying to walk on the ice. Four traffic fatalities occurred in wrecks due to icy roads, one of which occurred as far south as Sumter County. While some icing of roads and bridges occurred in parts of Central Alabama, Lauderdale, Colbert, Franklin, Lawrence, Limestone, Madison, Morgan, Cullman, Winston, Marion and parts of Walker, Fayette and Lamar were apparently hardest hit by the storm. The poultry industry suffered enormous damage as chicken houses collapsed under the weight of the ice and more than three million chickens were killed.</p> <p>Trees, powerlines, home and commercial building roofs also collapsed under the weight of the ice. Power outages were extensive throughout northwest Alabama. While most of the precipitation fell on February 1 and into the early morning of February 2, ice covered roads continued until February 5 in some of the hardest hit areas of northwest Alabama.</p> <p>Damage totals included 26 business or industrial buildings destroyed and 111 damaged, 7 homes destroyed and about 500 damaged, more than 150 farm buildings destroyed and about 100 damaged, 6 mobile homes destroyed and about 500 damaged.</p> <p>There was also extensive damage to roads, utility lines, timber and fruit orchards, and several hundred head of livestock was lost.</p>										
Midland City, Dale County	05 1835CST					0	0	3	0	Thunderstorm/Wind
Thunderstorm winds downed powerlines and caused minor damage to several homes. Very heavy rain was also reported.										
Semmes, Mobile County	11 0350CST					0	0	3	0	Thunderstorm/Wind
One greenhouse was destroyed and several others were damaged by thunderstorm winds.										
Loxley, Baldwin County	11 0450CST	2	60	0	0	0	0	4	0	Tornado (F1)
A tornado first touched down in a residential area in the southwest part of Loxley and moved northeast. Several outbuildings were destroyed, one house and one barn were unroofed. Several other homes had roof damage and power lines were downed. One horse suffered a severe head injury when struck by flying debris.										

2 ARIZONA

Northern and Eastern	2-4					5	?	4	0	Snowstorm
<p>A slow moving cold storm system spread 15 to 25 inches of snow above 6500 feet, 10 to 15 inches down to 5000, 3 to 10 inches down to 2000, and traces as low as 1000 feet. Many highways were closed and more than 80 weather-related traffic accidents were reported. Four people were killed in a collision near Oracle Junction. A Navajo woman in her 90's died due to exposure near her Low Mountain home on the reservation. Snow and mud isolated many Navajo's and Hopi's. Food and other supplies had to be air-lifted in.</p>										

3 ARKANSAS

Phillips County	01 unknown					1	0	-	-	Low Temperature
A 47-year old man was found dead outside of his mobile home, one mile south of Marvell. His death was attributed to exposure to cold.										
Mississippi County	02 unknown					1	0	-	-	Low Temperature
A 61-year old, Blytheville woman died from exposure on her front porch.										
Pulaski County	02 unknown					1	0	-	-	Low Temperature
A North Little Rock, 75-year old woman was found dead face down on the snow about two blocks from her home. She was pronounced dead because of exposure to low temperature.										
Pulaski County	03 unknown					1	0	-	-	Low Temperature
A 60-year old man from Little Rock fell down and died of exposure while on his way home from a grocery store.										
Crittenden County	04 unknown					1	0	-	-	Low Temperature
An elderly woman from Proctor was found dead. The 76-year old lady died of hypothermia.										
Mississippi County	04 unknown					1	0	-	-	Low Temperature
An 82-year old man died from exposure in Gosnell.										
Pulaski County	04 unknown					1	0	-	-	Low Temperature
A 67-year old North Little Rock man was found dead from exposure after falling down.										
Crittenden County	05 unknown					1	0	-	-	Low Temperature
A 63-year old woman from Proctor was found dead in her home after attempting to warm herself near a wood-burning stove. She died of hypothermia.										
Washington County	09 unknown					1	0	-	-	Low Temperature
A 45-year old man died from exposure in brushland near Springdale.										
Baxter County	11 unknown					1	0	-	-	Low Temperature
An 86-year old man died from cold exposure as he worked outside his home in Mountain Home.										
Miller County	13 unknown					1	0	-	-	Low Temperature
A 72-year old woman froze to death in her unheated, Texarkana home.										
Crawford, Sebastian, Madison, Franklin, Johnson, and Pope Counties	23 0010 - 0800 CST					0	0	5	-	Flash Flooding
A large batch of heavy rain moved in from Oklahoma late on Friday the 22nd, however, the flash flooding began after midnight. Rainfall amounts were common between 2 and 3 1/2 inches, with 6.55 inches reported at Combs in Madison County. Street flooding occurred in Fort Smith, with waist-deep water in a mobile home park as Mill Creek went out of its banks. Rushing water from the Mulberry River took a bridge off Highway 103 near Oak. Street flooding was also reported in the City of Van Buren. The Illinois Bayou went out of its banks from just above Hector to Russellville. Several sections of Highway 23 were under water.										
Franklin County	23 0700 CST					0	1	3	-	Wind
A strong wind gust turned over a trailer home in Mulberry. One minor injury resulted to one of the occupants.										
Columbia County	23 1150 CST					0	0	3	-	Wind
Thunderstorm winds blew down trees and power lines in Magnolia. Some windows were broken also.										
Ouachita County	23 1350 CST					0	0	3	-	Wind
Wind gusts unroofed a building and knocked down trees 3 miles northeast of Camden.										
Phillips County	23 1540 CST					0	0	5	-	Wind
Winds, about 70 MPH, from a thunderstorm unroofed some buildings in West Helena. Also, windows were broken at a junior high school.										

4 CALIFORNIA, Northern

Sierra Nevada, Mount Shasta-Siskiyou	07- 1800-08 1800PST					0	0	?	0	Snow
<p>The strongest storm of the season to impact California dropped out of the Gulf of Alaska with a very cold airmass. Storm totals in the Sierra Nevada and the Mount Shasta-Siskiyou Region of over two feet of snow were common, with local amounts of five feet. Blue Canyon received a 24-hour, record snowfall of 42 inches. All major highways were completely closed at one time or another during the storm.</p>										
San Francisco Bay	08 All morning					0	0	?	?	Wind
<p>Strong gusty southerly winds associated with an Arctic front buffeted the San Francisco Bay Area. Gusts to 51 knots on Angel Island and 48 knots at Davis Point were recorded.</p>										

STORM DATA AND UNUSUAL WEATHER PHENOMENA

FEBRUARY 1985

PLACE	DATE	TIME - LOCAL STANDARD	LENGTH OF PATH (MILES)	WIDTH OF PATH (YARDS)	NO. OF PERSONS		ESTIMATED DAMAGE		CHARACTER OF STORM
					KILLED	INJURED	PROPERTY	CROPS	

PLACE	DATE	TIME - LOCAL STANDARD	LENGTH OF PATH (MILES)	WIDTH OF PATH (YARDS)	NO. OF PERSONS		ESTIMATED DAMAGE		CHARACTER OF STORM
					KILLED	INJURED	PROPERTY	CROPS	

4 CALIFORNIA, Southern

Mission Gorge area of San Diego, San Diego County	4	1040PST 1040 and 1250PST	0.1	20	0	0	?	0	Tornado (F0) Funnel Clouds.
---	---	-----------------------------	-----	----	---	---	---	---	--------------------------------

A small tornado touched down briefly in the Mission Gorge area of San Diego, causing localized damage in the form of torn roofs and awnings in a mobile home park. Besides the tornado, two other funnels were sighted in the Mission Gorge area at about 1040PST, one in the Allied Gardens area and the other 10 minutes later north of Brown Field. At about 1250PST, a funnel cloud was also sighted southeast of Rancho Santa Fe, and another occurred northeast of Poway.

La Canada-Flintridge Los Angeles County	21	0200PST			0	0	?	0	High Winds
---	----	---------	--	--	---	---	---	---	------------

Wind gusts estimated at 60mph tore off part of a supermarket roof in La Canada-Flintridge and caused two power outages, one affecting 10,000 Southern California customers in La Canada-Flintridge and adjacent areas, and the other involving 200 customers in El Sereno.

5 COLORADO

Statewide	1/30-2/5				5	?	5	0	Cold
-----------	----------	--	--	--	---	---	---	---	------

The most bitter cold spell of the winter descended upon Colorado, bringing subzero weather to every reporting station in the state except Grand Junction, where the mercury dipped only to one degree above zero. Maybell, in the northwest corner of the state, reported an official temperature of 61 below zero on February 1st, breaking the all time state record of 60 below that had been held jointly by Maybell and Taylor Park. Many other spots in Northwestern Colorado froze in readings colder than 40 below. In Eastern Colorado, the coldest recorded temperature was 31 below at Briggsdale, in Weld County. Daily low temperature records were broken at Denver, Colorado Springs, Pueblo, and Fort Collins. The usual cold weather problems set in all over the state; stalled vehicles, jammed traffic lights, and frozen water and sewer lines. The cold was blamed for five deaths; two elderly men, two elderly women, and a 21 year old man. All died of hypothermia after prolonged exposure to the frigid temperatures.

Eastern Foothills	22-23				0	0	0	0	Heavy snow
-------------------	-------	--	--	--	---	---	---	---	------------

A snowstorm hit the eastern foothills overnight. Many spots throughout the foothills received 8 to 15 inches of snow. Cuchara Valley ski resort, west of Walsenburg, was buried under two feet, and 20 inches fell at Echo Lake in Clear Creek county. The snow spread to adjacent lower elevations, 3 to 7 inches fell in Denver, and parts of Interstate 70 were closed at times on the night of the 22nd.

Mountains	25-26				0	0	0	0	Heavy snow
-----------	-------	--	--	--	---	---	---	---	------------

A snowstorm dumped a foot of new snow at the Aspen area ski resorts. In the Northern Mountains, 11 inches fell at the Steamboat and Mary Jane ski areas.

6 CONNECTICUT

Statewide	08	Afternoon-Evening			0	0	3	0	Gusty Winds
-----------	----	-------------------	--	--	---	---	---	---	-------------

Gusty winds of up to 40 mph caused drifting snow which closed some roads for a time in scattered locations across the state. Also, a few cars were stranded by the drifting snow in Norwich. A billboard was blown down by the winds in North Windham, with some of the broken boards hitting passing cars.

Statewide	12	Afternoon-Evening			0	0	4	0	High Winds, Rain
-----------	----	-------------------	--	--	---	---	---	---	------------------

Gale force winds, gusting to 50 to 60 mph from the east, caused power failures affecting thousands of customers. Widespread outages were reported across the southern and southeastern portion of the state, especially near the coast. The strongest winds occurred during the late afternoon, bringing down many tree limbs and wires. In Middlesex County, up to 10,000 homes lost power. About 42,000 homes lost power statewide. Moderate to heavy rain fell during the period of high winds.

7 DELAWARE

Statewide	05-06	1400-1200 EST			0	?	4	0	Sleet, Freezing Rain
-----------	-------	---------------	--	--	---	---	---	---	----------------------

Sleet and freezing rain spread over interior portions of the state Tuesday afternoon then continued into the night. The precipitation started as snow, accumulating about an inch near the Pennsylvania border. The ice-covered roads and sidewalks caused numerous accidents by the evening rush hour. There were many minor weather-related injuries. Motels reported an increase in guests staying overnight to avoid the icy roads. Many roads were closed Tuesday night. Schools closed early Tuesday afternoon.

DELAWARE

New Castle	12	All day			0	0	4	0	Flooding
------------	----	---------	--	--	---	---	---	---	----------

About one inch of rain driven by winds gusting to 45 mph sent creeks and small streams out of their banks, flooded roads, bridges and basements, stranded several people and interrupted the electric service. The rainfall was not excessive, but the frozen ground could not absorb it. A portion of DE 82 was completely washed out. Small streams flooded many secondary roads with several feet of water. The water receded in the evening, roads were reopened by midnight. Tree limbs downed power lines, but flood waters contributed to the outages. There were few accidents but potholes full of water were responsible for many.

8 FLORIDA

Gonzalez, Escambia Co.	11	0620EST	0.6	10	0	0	3	-	Tornado (F1)
------------------------	----	---------	-----	----	---	---	---	---	--------------

A tornado ripped a portion of a roof off of a house, a storage shed was destroyed, several trees were downed, and three houses received minor damage. Circulation was evident in the damage pattern.

9 GEORGIA

Northeast Georgia	05	All Day			0	0	5	0	Winter Storm
-------------------	----	---------	--	--	---	---	---	---	--------------

Icing on trees and utility lines caused damage across northeast Georgia from the Athens area northward. Power was off in some communities for 6 to 12 hours. Damage to power and telephone lines alone was placed at 1/4 million dollars.

Baldwin County	05	2100EST			0	0	?	0	Flash Flood
----------------	----	---------	--	--	---	---	---	---	-------------

Heavy rain and the release of water from Lake Sinclair caused the Oconee River to flood in Milledgeville. At least 4 mobile homes were flooded and 6 families were evacuated.

Ben Hill County	11	1200EST			0	0	4	0	Wind
-----------------	----	---------	--	--	---	---	---	---	------

Wind blew a large tree across a mobile home in Fitzgerald. The home was a total loss.

Crawford County	11	1744EST			0	0	?	0	Wind
-----------------	----	---------	--	--	---	---	---	---	------

Trees were blown down on highway 42, 4 miles south of Roberta.

Crisp County	11	1900EST			0	0	?	0	Wind
--------------	----	---------	--	--	---	---	---	---	------

Many trees were downed from Arabi to near the Crisp/Wilcox County line near Hatley. A mobile home was damaged and a house was unroofed near Hatley.

Pulaski County	11	1915EST			0	0	?	0	Wind
----------------	----	---------	--	--	---	---	---	---	------

Several trees were uprooted by winds just southwest of Hawkinsville on highway 26.

Northern Georgia	11-12	1900-0900EST			0	0	?	0	Winter Storm
------------------	-------	--------------	--	--	---	---	---	---	--------------

Rain changed to snow during the evening of the 11th and snow was heavy at times across north Georgia during the night. Two to six inches of snow was common across northern Georgia from the Atlanta and Athens area north. The most snow was around Blairsville where 12 to 16 inches were reported. Travel was near a stand-still for several days across the northern counties of the state. Schools and many businesses were closed for at least two days.

10 IDAHO

Southeast Idaho	7-8	2200-1400NST			0	0	5	0	Blizzard, High Winds
-----------------	-----	--------------	--	--	---	---	---	---	----------------------

A very strong weather system moved through the area. Steady winds were near 50mph at times with wind gusts to 60mph, creating blizzard conditions. Extensive areas of falling, blowing and drifting snow were reported, with most of the roads and schools closed on the 8th. Driggs, Berton County, received 16 inches of snow during the storm. Most valley locations reported 2 to 5 inches of new snow.

STORM DATA AND UNUSUAL WEATHER PHENOMENA

FEBRUARY 1985

PLACE	DATE	TIME - LOCAL STANDARD	LENGTH OF PATH (MILES)	WIDTH OF PATH (YARDS)	NO. OF PERSONS				ESTIMATED DAMAGE	CHARACTER OF STORM
					KILLED	INJURED	PROPERTY	CROPS		
11 ILLINOIS										
Statewide	24-28				1	0				Flooding
	<p>Predictions issued in December and January of a high potential for flooding in Illinois were realized in late February. A wet fall season and extremely low temperatures from late December to mid February (which froze the soil and allowed a significant accumulation of winter snowfall), followed by sudden and persistent warming in mid February, resulted in a "snow-melt flood". This process began on February 17.</p> <p>Unusually heavy (1 to 3 inch) rains on Feb. 21-23, greatly added to the rapid runoff.</p> <p>As a result, flood stages were exceeded on most Illinois rivers by February 24, with locally severe flooding along portions of the Illinois, Wabash and Kankakee Rivers. The large rivers were cresting at the end of February.</p> <p>An elderly man drowned on the 24th while trying to walk away from his flooded house. His residence was located in Grundy County, near the confluence of the Illinois and Kankakee Rivers.</p> <p>Please refer to <u>Storm Data</u> for March for a description of flood-related damages.</p>									
12 INDIANA										
Southwest Indiana	05	0400EST			0	0	2	0		Glaze
	Freezing drizzle glazed road surfaces which caused numerous accidents.									
North Central Indiana	10	0330EST			5	48	6	0		Heavy Snow
	<p>Snow and strong winds battered North Central Indiana from the 10th to the 19th. 21.2 inches of snow fell at the National Weather Service Office at South Bend from the 10th to the 15th, with a maximum snow depth of 23 inches recorded on the 15th. Strong winds which averaged 16 miles per hour from the 10th-19th with a peak gust of 49 miles per hour on the 12th, caused snow drifts 12 feet high and frequently reduced visibilities to zero. Virtually all county roads, State, U.S. and Interstate highways were closed. Full snow emergencies were declared in LaPorte, Starke, Marshall, St. Joseph, Elkhart and Kosciusko Counties from the 12th to the 19th.</p>									
Northeast Indiana	11	0000EST			0	0	0	0		Heavy Snow
	8 to 10 inches of snow over a period extending from the 11th to the 14th with winds reaching 35 miles per hour resulted in snow emergencies being declared across much of Northeast Indiana. Many schools and businesses were closed due to snow drifts across roads.									
Entire State of Indiana	23	0700EST			0	0	7	0		Flooding
	<p>Warm temperatures with rainfall amounts of 2 to 3 inches across most of the State caused rapid snow melt. The resulting run off caused flooding of all the rivers, streams and lakes throughout Indiana. Flood crests along most of the rivers equalled or slightly exceeded the record flood of March 1982. Most of the rivers remained above flood stages into March.</p>									
13 IOWA										
Southern and Eastern Iowa	10-12	Afternoon			0	0	4	0		Snow and Wind
	<p>Snow began on the 10th and continued into the 11th, leaving 4 to 12 inches across much of Southern and Eastern Iowa. Strong winds on both the 11th and 12th drifted the snow, temporarily stranding travelers and closing schools and businesses. The unrelenting wind was a headache for road crews that had to go back over sections of highways that had already been cleared.</p>									
Eastern Iowa	19-28	Day			0	0	4	0		Floods
	<p>Warm temperatures and mildly heavy rains brought rivers above flood stage in many areas, most notably in the southeast where snowpack had been heaviest. The flooding was not severe, but did displace some people living in low-lying areas, and destroyed or damaged cabins along the Des Moines River north of Ottumwa used as vacation homes.</p>									
Polk County	20	Evening			0	0	4	0		Lightning
	<p>About 15,000 customers lost power due to lightning strikes in a thunderstorm over Des Moines. Outages for most were less than a half hour. The biggest strike was when the lightning hit a 69,000 watt power line on the east side of the city, knocking out two sub-stations.</p>									
14 KANSAS										
St. George, Pottawatomie County	20	1445CST			0	0	5	0		Lightning
	<p>Lightning struck a large tree and then formed into a fireball and rolled into a home in St. George. The strike was bright enough that children at the school, two blocks away thought the lights had been switched on and off. It was strong enough that phones rang all over town. The fire was put out within 15 minutes of the strike, but intense heat and smoke left the home's interior and contents a near total loss.</p>									
Southeast Kansas	20-28				0	0	6	6		Heavy Rain, Flooding
	<p>Heavy rains fell upon southeast Kansas between the 20th and the 24th. More than 4 inches fell east of a line from Paola to Cedar Vale, and more than 6 inches was measured east of a line from Pittsburg to Coffeyville. Bartlett in southeast Labette County recorded 8.47 inches.</p> <p>Runoff sent the Marais Des Cygnes, Marmaton, Neosho and Verdigris Rivers out of their banks until the 24th. Most serious flooding was on the Marais Des Cygnes downstream from Osawatimie and on the Neosho downstream from Parsons. Overflows caused considerable road, bridge and crop damage. The Marais Des Cygnes crested 7 to 10 feet above flood stage downstream from Osawatimie, and the Neosho crested 6 to 9 feet above flood stage downstream from Iola. Most crests were reached on the 24th.</p>									
15 KENTUCKY										
Statewide	01-03	Early Morning- Noon 'CST			0	0	2	0		Heavy Snow
	<p>Snow fell over the weekend of February 1 through 3. Snow totals ranged from around 12 inches over west Kentucky, lowered to 5 to 10 inches over central Kentucky, and then increased to 8 to 12 inches over southeast Kentucky. Eighteen inches was the highest amount recorded atop Black Mountain in east Kentucky. Snow drifts were as high as six feet throughout many sections of the state. Snow and ice laden power lines snapped under the extra weight, resulting in widespread power outages. Several schools, businesses, and state government offices were closed. A 70 year old Simpson County man died indirectly from the storm while shoveling heavy snow on February 2, 1985. The cause of death was an apparent heart attack.</p>									
Northwest Kentucky	05	0400-0900CST			0	0	2	0		Ice Glaze
	<p>Freezing drizzle glazed exposed surfaces with a 1/2 inch coating of ice over northwest Kentucky counties, resulting in hundreds of traffic accidents.</p>									
Statewide	12-13	Early Morning			0	0	4	0		Heavy Snow
	<p>The heaviest snowstorm of the season, accompanied by winds that whipped drifts as high as 20 feet, isolated hundreds of Kentuckians, especially those within the mountain homes of the east. Snowfall totals ranged from 1 to 4 inches over the west two-thirds of the state, but increased drastically to 10 to 24 inches over the east third of Kentucky.</p> <p>Breaks Interstate Park and a few other isolated areas over southeast Kentucky reported snowfalls of up to 24 inches. Most of the snow fell within an 18-hour period, virtually bringing life to a standstill over east Kentucky. Roads were impassable as snow drifts ranged as high as 20 feet. Trees and power lines blocked roads. Roadcrews worked around the clock. Power remained out for as long as five days after the storm in some rural areas.</p> <p>Hundreds of motorists were stranded. National Guard helicopters were used to locate stranded motorists, evacuate residents without electrical power, and scout road conditions. National Guardsmen also played a vitally important role in helping to clear and open main thoroughfare roadways.</p> <p>Local emergency response groups throughout east Kentucky provided vital assistance to residents isolated by the snowfall by delivering prescriptions, groceries, and fuel to the homebound.</p> <p>One death was attributed to the winter storm indirectly. A 74 year old Laurel River man died from a heart attack while shoveling snow on February 13, 1985.</p> <p>Long time residents of southeast Kentucky said it was the worst snowstorm that they had ever remembered.</p>									

STORM DATA AND UNUSUAL WEATHER PHENOMENA

FEBRUARY 1985

PLACE	DATE	TIME - LOCAL STANDARD	LENGTH OF PATH (MILES)	WIDTH OF PATH (YARDS)	NO. OF PERSONS		ESTIMATED ¹ DAMAGE		CHARACTER OF STORM
					KILLED	INJURED	PROPERTY	CROPS	

PLACE	DATE	TIME - LOCAL STANDARD	LENGTH OF PATH (MILES)	WIDTH OF PATH (YARDS)	NO. OF PERSONS		ESTIMATED ¹ DAMAGE		CHARACTER OF STORM
					KILLED	INJURED	PROPERTY	CROPS	

16 LOUISIANA

North and Central	01 All Day	2	20	?	?	?	?	Ice and Snow	
<p>Up to one inch of sleet fell during the morning in the north and central sections. Precipitation was heaviest north of the Zwolle, Winnfield and Tallulah axis. The precipitation changed to snow during the afternoon. 3 to 5 inches of snow fell north of the Natchitoches and Monroe line. Many roads were closed including I-20 and I-220 loop around Shreveport. 20 people were injured from falls. Two elderly men were found dead in their unheated homes in Shreveport and Monroe.</p>									
Southwest and East Central	01 All Day	1	?	?	?	?	?	Ice	
<p>Freezing rain and sleet made travel impossible between Baton Rouge and Lake Charles. The Lake Charles police reported 50 accidents between 6 am and 8 pm. I-10 was closed for a couple of days between Baton Rouge and Lake Charles. A 47 year Baton Rouge man froze to death after being knocked unconscious from a fall.</p>									
Extreme Southeast	11 0030CST	0	20	6	?	?	?	Severe Thunderstorms	
<p>A line of severe thunderstorms moved through the extreme southeast section between 0030 and 0230CST. Gusts up to 75 mph were observed by a Coast Guard ship on Lake Pelto at 0130CST; a 60 mph gust was measured on the Lake Pontchartrain Causeway bridge at 0155CST. At 0030CST, strong winds damaged a high school roof, blew out a drug-store plate glass window and knocked down a motel sign onto a parked car in Morgan City. 23 mobile homes were destroyed and 14 heavily damaged in the Houma, Bourg area around 0100CST. In addition, three homes were destroyed, ten were severely damaged and 30 received minor damage. 20 people were injured. Property damage was estimated around \$1,000,000. At 0145CST, strong winds destroyed a home's chimney in Plaquemines Parish. Two trees were blown down on top of cars in Slidell around 0200CST.</p>									
North and Central	23 Morning	0	0	4	?	?	?	Severe Thunderstorms	
Central and Southwest	23 All Day	0	0	?	?	?	?	Heavy Rain	
Southeast	24 Morning	0	0	?	?	?	?	Heavy Rain	
<p>A line of severe thunderstorms moved through the north and central sections of the state during the morning and afternoon. The storms blew down trees and power lines, and damaged roofs in Bastrop, Minden, and Monroe where a tree fell on a house and caused several thousand dollars of damage. Strong winds blew down an awning and broke a store's plate glass window in Mansfield. 2 to 4 inches of rain occurred in the central and southwest parts of the state on the 23rd, and 2 to 3 inches fell in the southeast part on the morning of the 24th. Heaviest amounts were concentrated in the central and southwest areas. 4.85 inches fell at Alexandria, 4.25 inches at Mitte, 4.44 inches at Elizabeth and 4.09 inches at Dakdale. Rains soaked through a leaky roof at Southeast Louisiana University and flooded classrooms. In addition, the Scotland section of Baton Rouge was flooded.</p>									

17 MAINE

Statewide	12-13 2000EST	0	0	5	0	0	0	High Winds and Rain	
<p>A strong, nonconvective easterly flow developed ahead of a storm that was spawned south of New England Tuesday morning. The storm intensified as it approached and travelled through southern New Hampshire and southern Maine late Tuesday night and Wednesday morning. Estimated wind gusts of 50 mph or greater were common, especially along coastal sections. Peak gusts reported were: 45 mph at WSMO Portland, 51 mph at FSS Augusta, 58 mph (50 Kts) at the Coast Guard Stations on Sequin and Manana Islands, and 75 mph (60 Kts) by the automated Coast Guard Stations on Mt. Desert and Matinicus Rocks. The high winds caused power outages in many coastal communities due to downed trees and limbs. Hardest hit appears to be the York and Berwick area of York County, where some 2,000 homes were without power for about 7 hours. The rains and melting snow produced some cellar and urban street flooding in coastal sections where storm drains and catch basins were snow clogged. Apparently, the rest of the state escaped with relatively minor wind damage. However, the ski areas welcomed the snow that accumulated to 6 inches or more in the mountains.</p>									

18 MARYLAND and D.C.

Statewide	05 1400-06 1200 EST	2	?	5	0	0	0	Sleet, Freezing Rain	
<p>Sleet and freezing rain spread over interior portions of the state Tuesday afternoon then continued into the night. The precipitation started as snow, accumulating an inch or two near the Pennsylvania border. The ice-covered roads and sidewalks caused numerous accidents by the evening rush hour and two fatalities, one a 32 year old woman near Upper Marlboro, the other a 54 year old man outside Cambridge. Emergency rooms were full of patients with minor weather-related injuries. Motels reported an increase in guests staying overnight to avoid the icy roads. Many roads were closed Tuesday night. The state police asked the AAA tow trucks to stay off the roads. Schools closed early Tuesday afternoon and school districts throughout central Maryland remained closed on Wednesday. Snow emergency plans were put in effect for western and portions of central Maryland on Tuesday evening, and remained in effect late Wednesday morning across the western Maryland counties of Garrett, Allegany and Washington.</p>									
Washington, Frederick, Carroll, Baltimore, Harford, Cecil, Montgomery, Howard, Anne Arundel and Prince Georges Counties, including Baltimore City and the District of Columbia	12 All day	0	0	4	0	0	0	Flooding	
<p>Nearly two inches of rain driven by winds gusting to 50 mph sent creeks and small streams out of their banks, flooded roads, bridges and basements, stranded several people and interrupted the electric service to thousands. The rainfall averaged between 1 1/2 and 2", but the frozen ground couldn't absorb it. Frederick reported 1.75". Small streams flooded many secondary roads with as much as 4 feet of water. The water receded in the evening and roads were reopened by midnight. Empty trailers and house trailers were banned from the Francis Scott Key bridge when the winds increased above 40 mph. Tree limbs downed power lines but, flood waters contributed to the outages. There were few accidents but, potholes full of water were responsible for many. Flood waters forced the early closing of many area schools.</p>									
Garrett and Allegany Counties	12 0100-0700 EST	0	0	1	0	0	0	Snow	
<p>A major winter storm moving north through the Allegany mountains deposited a foot or more of snow overnight in Garrett County and nearly 6 inches over the higher elevations of Allegany County. A snow emergency was declared.</p>									

19 MASSACHUSETTS

Bridgewater	08 0900-1200EST	0	14	5	0	0	0	Blowing Snow	
<p>A sixty car pileup occurred at the Route 495 & Route 24 Interchange when gusty winds caused blowing snow to reduce visibility to zero. Winds were blowing from the northwest, creating all of the problems on this highway.</p>									
Statewide	12 Late Afternoon-Evening	0	1	4	0	0	0	High Winds, Rain	
<p>Gale force winds, gusting to 50 to 60 mph from the east, caused numerous scattered power outages mostly in the eastern portion of the state. In Somerville, scaffolding was blown from a building, injuring a pedestrian. On Martha's Vineyard Island, considerable soil erosion was reported along the southern coast as a result of wind-driven high seas.</p>									
Statewide	25 All day	0	0	3	0	0	0	Gusty Winds	
<p>Scattered reports of power outages and minor damage were received from parts of the state. In Mansfield, a large tree limb fell on a parked auto, causing substantial damage.</p>									

20 MICHIGAN

Entire State	10-14	0	2	6	0	0	0	Snow, Drifting Snow	
<p>Almost continuous snowfall and drifting brought new accumulations of between 5 and 25 inches. The heaviest amounts were in the Grand Traverse Bay area, along the south shore of Lake Superior, the west shore of Lake Huron, and the southeast shore of Lake Michigan. Roads were blocked and schools and businesses were closed for several days. 22 roofs collapsed, resulting in 2 injuries. About 1000 auto accidents resulted in 6 deaths and 70 injuries. Power outages occurred, especially in the Thumb area.</p>									

21 MINNESOTA ————— NONE REPORTED

STORM DATA AND UNUSUAL WEATHER PHENOMENA

FEBRUARY 1985

PLACE	DATE	TIME - LOCAL STANDARD	LENGTH OF PATH (MILES)	WIDTH OF PATH (YARDS)	NO. OF PERSONS		ESTIMATED DAMAGE		CHARACTER OF STORM
					KILLED	INURED	PROPERTY	CROPS	

PLACE	DATE	TIME - LOCAL STANDARD	LENGTH OF PATH (MILES)	WIDTH OF PATH (YARDS)	NO. OF PERSONS		ESTIMATED DAMAGE		CHARACTER OF STORM
					KILLED	INURED	PROPERTY	CROPS	

22 MISSISSIPPI										
Statewide Except Extreme Southeast	1-2					3	?	7	0	Winter Storm
Freezing rain and freezing drizzle which began in Northwest Mississippi late January 31st spread slowly southeastward during the early morning hours of February 1st. By mid-morning, freezing precipitation was occurring as far south as a Columbia to Waynesboro line, while the precipitation had changed to snow and sleet over Northern and West Central Mississippi. The precipitation tapered off during the afternoon of the 1st, and became light and intermittent during the evening hours. An additional inch or two of snow fell over North Mississippi on the night of Feb. 1-2. Total accumulations of snow and sleet averaged 5 inches across North Mississippi with isolated totals near 8 inches. Ice accumulations due to freezing rain and sleet averaged 1 to 2 inches across West Central and Southwest Mississippi, while the East Central part of the state was less severely affected.										
Travel became extremely difficult or impossible across all but the southeast corner of the state. Major portions of Interstates 20 and 55 in Mississippi were closed by the Highway Patrol as numerous tractor-trailers jack-knifed and most other vehicles became stranded. Many roads in North Mississippi remained treacherous for several days, with the last travelers advisory lifted late on the 6th.										
Other than considerable problems with power outages in the areas hardest hit by freezing rain, the major problems were collapsing roofs and buildings mainly in Northeast Mississippi. That area received several inches of sleet, up to 5 inches in some places, and the resulting weight was more than many structures could withstand. Hardest hit was the poultry industry in Northeast Mississippi, where well over a million chickens were destroyed as several hundred chicken houses and other farm buildings were damaged or destroyed.										
Three deaths were directly attributable to the winter storm. A 54 year old man died of exposure near Hollandale in Washington County early on the 3rd. An elderly woman froze to death early on the 2nd near Hickory in Newton County in a house without heat. A 70 year old man froze to death under similar conditions on the 4th, location unknown. In addition, 2 children in Corinth died in a house fire caused by a faulty heater, while there were also at least 2 deaths and several injuries due to traffic accidents blamed on icy roads.										
Northeast	11	1000CST-2200CST				0	0	0	0	0
Four inches of snow fell in the extreme NE corner of the State. Accumulations exceeded two inches north of a Tupelo-Memphis line, while one inch of snow fell as far south as a Clarksdale-Macon line.										
Greenville, Washington County	23	1545CST				0	0	?	0	0
Thunderstorm, High Winds										
Wind gusts over 60 mph occurred at the Greenville Airport as a line of thunderstorms moved into Western Mississippi.										
6N Tunica, Tunica County	23	1605CST	0.1	50		0	0	4	0	0
Tornado (F1)										
A small tornado overturned several grain elevators and caused minor damage.										
NE Tunica County	23	1615CST	0.1	50		0	0	3	0	0
Tornado (F0)										
A small tornado occurred at the intersection of Highways 3 and 304, causing minor damage.										
2N Cleveland, Bolivar County	23	1622CST				0	0	4	0	0
Thunderstorm, High Winds										
Several barns and house trailers were damaged as a line of thunderstorms moved across the area. Power lines were also blown down.										
23 MISSOURI										NONE REPORTED
24 MONTANA										NONE REPORTED
25 NEBRASKA										
Southeast Nebraska	04	Daytime				0	0	0	0	0
Heavy snow fell in southeast Nebraska with 7 inches reported at Wymore and 5 to 6 inches at Beatrice, Barneston, Pawnee City and Fairbury.										
Platte County	21	0155CST				0	0	4	0	0
Lightning										
Lightning hit a home just north of Columbus, causing considerable damage to the roof, TV antenna, walls, and outbuildings including corn-drying bins. Curtains in the living room also caught fire.										
26 NEVADA										NONE REPORTED

27 NEW HAMPSHIRE										
Statewide	12-13	1900EST				0	0	5	0	High Winds and Rain
A strong, nonconvective easterly flow developed ahead of a storm that was spawned south of New England Tuesday morning. The storm intensified as it approached and travelled through southern New Hampshire late Tuesday night and early Wednesday morning. Estimated wind gusts of 50 mph or greater were common, especially along coastal sections. Numerous small tree limbs and some dead trees fell on or through power lines. This caused power outages in many communities in southern New Hampshire, which affected an estimated 8,500 customers for upwards to 7 hours. Peak gusts reported were: 51 mph at Pease Air Force Base, Portsmouth; 75 mph (60 Kts) at the Isles of Shoals automated Coast Guard Station; and 45 mph at Concord. The Coast Guard at Portsmouth reported tides were 1 to 2 feet above normal, with only minor coastal flooding problems along Route 1A. However, the rains and melting snow over southern sections produced some cellar and urban street flooding where storm drains and catch basins were snow clogged. Apparently, the north and mountain sections of the state escaped with minor wind damage, but the snow which accumulated up to 10 inches had the ski areas jumping for joy.										
28 NEW JERSEY										NONE REPORTED
29 NEW MEXICO										NONE REPORTED
30 NEW YORK, Coastal										NONE REPORTED
30 NEW YORK, Central										
Lower Hudson Valley, Southern Tier	01	AM				1	3	6	0	0
Snowstorm										
Snow covered the Lower Hudson Valley Friday morning. Snow ranged from 3 inches in Southern Orange County to near 11 inches in higher elevations of Ulster County. Fear of a second storm later that night (possibly another foot) caused some families to venture out to get supplies. Three persons were injured, and one female killed in separate automobile crashes. In Broome County, the Town of Whitney Point, 15 cars were involved in a chain-reaction accident. Three persons were slightly injured, and I-81 was closed for about an hour.										
Cobleskill, Schoharie County	04	Unknown				0	0	3	0	0
High Wind										
Unofficial 60 MPH winds (non-convective) knocked down a 25-foot wall at a local supermarket.										
Area Wide	04	AM				0	0	0	0	0
Cold										
Frigid temperatures covered Eastern New York. Coldest temperatures were reported in Columbia County, in the Towns of Crayville and West Copake, where the mercury dropped to minus 22.										
Area Wide	05	PM EST				1	2	?	0	0
Snowstorm										
A major winter snow storm dumped snow over Eastern New York. Snow amounts ranged from 3 to 4 inches in Rensselaer County to almost a foot in the Adirondacks. In Rensselaer County a traffic accident involving highly toxic and flammable chemicals caused minor problems for Rensselaer County emergency services. Meanwhile, in Warren County, a truck transporting nuclear contaminated lead was involved in a traffic accident at the intersection of Rcs 4/149 in the Town of Fort Ann. Both incidents were handled without complications. An 80-year old male died of cardiac arrest in Kingston while attempting to shovel out his driveway.										
Warwick, Orange County	12	1535EST				0	0	?	0	0
High Wind										
High winds and rain pelted the Town of Warwick. Power company officials estimated winds of 70 MPH (non-convective). Power was out to 2,245 homes for 2 1/2 hours.										
Chateaugay Lake, Franklin County	15	2000-2300EST				0	1	5	0	0
Snow Squalls										
Snow squalls were listed as the cause of the crash of a Piper-Cub aircraft. The pilot crashed in a heavily wooded area of the Adirondacks. During the 40+ hours the pilot was lost, the wind-chill temperatures reached minus 50 degrees.										
Ft. Covington	19	0930EST				1	2	?	0	0
Blowing Snow										
Blowing and drifting snow reduced visibility to zero. One accident occurred on Rte. 37, Franklin County, which resulted in one male (27 years of age) to suffer critical injuries.										

STORM DATA AND UNUSUAL WEATHER PHENOMENA

FEBRUARY 1985

PLACE	DATE	TIME - LOCAL STANDARD	LENGTH OF PATH (MILES)	WIDTH OF PATH (YARDS)	NO. OF PERSONS		ESTIMATED DAMAGE		CHARACTER OF STORM
					KILLED	INJURED	PROPERTY	CROPS	

PLACE	DATE	TIME - LOCAL STANDARD	LENGTH OF PATH (MILES)	WIDTH OF PATH (YARDS)	NO. OF PERSONS		ESTIMATED DAMAGE		CHARACTER OF STORM
					KILLED	INJURED	PROPERTY	CROPS	

NEW YORK, Central

Essex County 24 AM 0 0 5 0 Flood
 Rain and ice produced flooding along the Deer and St. Regis Rivers. The Hamlet of Helena was hardest hit. Two homes had to be evacuated. Rte. 92 and several town roads had to be shut down also due to high water.

Albany, Schenectady, Rensselaer, Warren, Washington, Essex, Schoharie, Saratoga Counties 27 1315EST 0 0 6 0 Wind
 A late winter cold front blew into the Capital District Wednesday afternoon. Winds were recorded at WSFO Albany at 56 MPH (non-convective) at 1315 EST. The wind blew several roofs off of buildings, uprooted several large trees, and knocked out power lines throughout the Capital District.

30 NEW YORK, Western

Parts of Oswego, Cayuga, Wayne and Monroe Counties, and other parts of Western New York 07 Morning - - 5 - Wind and Snow
 Strong winds and snow caused white-outs and up to 13 foot snow-drifts. Many schools and businesses were forced to close. Many fender-bender accidents occurred. Some resulted in injuries.

Erie County 12 - - 5 - Snow
 Accumulated heavy snow on roofs caused the collapse of the Allendale Theatre marquee in Buffalo and a garage in Clarence.

Erie and Niagara Counties 13-14 - - 5 - Wind
 Strong wind caused the Niagara River to overflow its banks in Wheatfield, Cayuga Island, and Grand Island. Water surrounded and damaged a few homes, destroyed boat docks, and inundated streets.

Erie County 19 Evening - - 5 - Snow
 Accumulated heavy snow caused a portion of the roof of the Eastern Hills Mall in Clarence to bend. Snow was also blamed for the collapse of a garage in Buffalo.

Parts of Wyoming and Genesee Counties, and other parts of Western New York 19 Morning 2 - 5 - Wind and Snow
 Strong winds and snow caused white-outs. A portion of Route 98 from the NY Thruway to Elba, Genesee County was closed. Many accidents occurred. Some resulted in injuries.

A 20-year old, male hitch-hiker on Route 20 in Genesee County was struck and killed by a snowblinded motorist.
 In Portville, Cattaraugus County, a 54-year old woman ventured outside on foot to visit a friend. She became disoriented by hypothermia. Discovered lying on a hill several hours later, she was rushed to the hospital where she died.

Parts of Erie, Genesee, Monroe, Cattaraugus, Chautauqua and Jefferson Counties, and other parts of Western and Central New York 23-27 - - 7 - Rain and Snowmelt
 Sustained mild temperatures from February 21st to the 24th melted a 3 foot deep snowpack that contained 3 to 5 inches of water. Rainfall of up to 1.5 inches during the period worsened the flood that followed.

The areas that suffered the most were Amherst, Clarence and South Buffalo, all in Erie County; Sunset Bay in Chautauqua County; Batavia in Genesee County; and western portions of Monroe County.

Tonawanda and Ellicott Creeks crested at their highest stages since March 1960. The flood along Ellicott caused massive evacuation, many fleeing by boat. Numerous basements and first floors of homes were inundated. Tonawanda Creek ravaged Batavia in Genesee County, and Clarence and Northeast Amherst in Erie County.

Ice jams along Cazenovia, Buffalo, and Lancaster Creeks also caused residential and road flooding. Hundreds of residents near these creeks were evacuated.

At the mouth of Cattaraugus Creek in Sunset Bay, Northern Chautauqua County, residents claimed to have suffered the worst ice-jam flooding since 1963. Many homes were damaged. Streets were severely eroded. Hundreds of residents were evacuated.

Flooding was also reported to have occurred along the Cassadaga Creek near Jamestown, Chautauqua County, and in parts of Jefferson County.

An estimate of the damage caused by this flooding amounted to about 12 million dollars.

NEW YORK, Western

Onondaga County 27 1345EST - 5 4 - Snow
 Blinding snow and ice-slickened roads were blamed for a quarter-mile long pileup that left 5 persons injured and 30 vehicles wrecked or damaged on the northbound lanes of Interstate 81 in Nedrow.

31 NORTH CAROLINA

Lenoir, Caldwell Counties 09 Early a.m. 1 0 0 0 Cold
 An 86-year old woman wandered from her home and died from exposure/hypothermia.

North Carolina Mountains 11 Late p.m. to 12 0800 EST 0 0 ? ? Heavy Snow, Wind
 A massive winter storm dumped snow ranging from around 5 inches in many locations in the mountains to 22 to 24 inches in the Murphy, Mt. Mitchell, and Avery County areas. Near blizzard conditions were reported, and winds caused the snow to drift to 8 to 10 feet in the northern mountains. Thunderstorms accompanied the snow in many locations.

Kannapolis, Cabarrus and Rowan Counties 12 0115EST - 0130EST 0 0 5 0 Thunderstorm Winds
 Most damage was reported along Center Grove Road near the county border. Many trees were uprooted, one home was unroofed and several others had roof damage. A mobile home was also damaged.

Southmont, Davidson County 12 0200EST 0 0 5 0 Thunderstorm Winds
 Damage was reported at a boathouse yard on High Rock Lake where 55 sheds were destroyed or severely damaged. Some boats were also damaged. Total damage was estimated to be around \$50,000.

2 3/4 miles N.W. of 12 0400EST 0 0 3 0 Thunderstorm Winds
 A small outbuilding was destroyed, large tree limbs were blown off and a mobile home was damaged by wind-driven debris.

Central and Eastern North Carolina 12 0000EST-0600EST 0 0 5 0 Wind
 Very strong non-convective winds associated with the intense winter storm and frontal passage produced widespread but mostly minor damage. Gusts to around 50 MPH were observed at many weather stations, and damage suggests gusts to around 70 MPH occurred in a few areas. Significant property and tree damage was reported in Moore, Duplin, Wake, Johnston, and Bertie Counties.

Brunswick County 12 Most of Day 0 0 6 0 Wind, Erosion
 Severe beach erosion occurred on successive high tides around 0030EST and 1300EST. As noted above, high winds were reported and continued along the coast much of the day. Several hundred feet of State Road 1528 were washed out, and 27 beach-front homes at Long Beach sustained damage. More than 400 decks, porches, and stairways were torn from homes at Caswell, Long, and Holden Beaches. Property losses are estimated at three-quarters million dollars.

32 NORTH DAKOTA - NONE REPORTED

33 OHIO

Entire State 12-13 0 0 5 5 Heavy Snow High Wind
 A strong winter storm dumped 6 to 18 inches of snow on the state. The heaviest snow fell in southern and eastern Ohio. Winds gusting as high as 50 mph caused problems as snow drifted as high as 10 feet. Twenty-seven counties declared snow emergencies and the governor called out the National Guard to assist in clearing roads. The heavy snow accumulation caused several buildings to collapse and damaged fruit trees throughout the state.

STORM DATA AND UNUSUAL WEATHER PHENOMENA

FEBRUARY 1985

PLACE	DATE	TIME - LOCAL STANDARD	LENGTH OF PATH (MILES)	WIDTH OF PATH (YARDS)	NO. OF PERSONS				ESTIMATED DAMAGE	CHARACTER OF STORM
					KILLED	INJURED	PROPERTY	CROPS		
34 OKLAHOMA										
East Central, Northeast	04	afternoon and night			0	0	?	?		Winter Storm
		Three to five inches of snow were common with some areas reporting up to 8 inches. Many schools and roads were closed due to the heavy snow.								
Oologah, Rogers County	22	0215CST	Short	Narrow	0	0	5	?		Tornado (F1)
		A tornado briefly set down near Oologah, damaging a house and destroying a work-shop. Damage estimated at \$75,000.								
Sapulpa, Creek County	22	Evening			1	0	?	?		Flooding
		Rock Creek flooded an area of northern Sapulpa. A 21-year old man was washed away and drowned.								
Miami, Ottawa County	22-23	Night-Day			0	0	?	?		Flooding
		Tar Creek and Quail Creek flooded the northeastern section of Miami forcing 40 people to evacuate their homes. About 75 homes and 25 businesses were damaged. No estimate on damages was determined.								
Skiatook, Tulsa County	22-23	Night-Day			0	0	?	?		Flooding
		Several days of heavy rain forced Bird Creek to flood portions of Skiatook. About 35 people were forced from their homes as flood waters inundated about 40 square blocks. Water poured into about 50 homes and businesses. No estimate of damage was available.								
Bristow, Creek County	22-23	Night-Day			0	0	?	?		Flooding
		Little Deep Fork Creek flooded, causing 40 families to be evacuated from a mobile home park in the west section of town.								
South and East Halves	22-24				0	0	6	?		Flooding
		Heavy rains of 5 to 7 inches caused flooding in many areas of the southern and eastern halves of the state. Many roads and bridges were washed out. Damage will exceed 2 million dollars. Many roads were closed for several days.								
Watonga, Blaine County	23	0025CST			0	0	3	?		Lightning
		Lightning destroyed two buildings. Damage estimated at \$1,000.								
Bentley, Harmony, Atoka County	23	0100-0116 CST	10	500	0	3	5	?		Tornado (F2)
		A tornado first set down in the community of Bentley and then moved north northeastward, touching down intermittently for about 10 miles, then hitting the small community of Harmony. Four homes were completely destroyed, as well as five barns. Many houses and barns received major damage. Three people received minor injuries. Total damage estimated at \$400,000.								
Hugo, Choctaw County	23	0430CST			0	0	5	?		Winds
		A thunderstorm produced winds which damaged a childrens home, downed many trees, and destroyed several outbuildings. Damage estimated at \$75,000.								
Sobol, Pushmataha County	23	0455CST			0	0	4	?		Winds
		A thunderstorm produced winds which damaged a house and destroyed an outbuilding. Damage estimated at \$50,000.								
Frederick, Tillman County	23	1430CST			0	0	?	?		Funnel Cloud
		A cold-air funnel was spotted just north of Frederick. No damage occurred.								
Miami, Ottawa County	24-25	Night-Day			0	0	?	?		Flooding
		The Neosho river crested at 13 feet above flood stage, flooding a large portion of Miami. One hundred families and 70 nursing home residents were forced to evacuate. Ninety homes were estimated to be damaged as water as high as 7 feet was in some houses. Damage estimates are still being evaluated.								
35 OREGON										
Statewide	7-8				2	?	?	0		Snow
		A winter storm dumped 2 to 4 inches of snow in western valleys of Oregon and 4 to 7 inches in many eastern basins. Snow slickened highways caused numerous minor traffic accidents. Two weather related traffic deaths were reported in the Pendleton area. Up to 2 feet of snow fell in the Cascade and Northeast Mountains, closing mountain pass roadways for several hours. Scattered power outages were also reported in the Willamette Valley and Klamath Basin where heavy wet snow toppled treecops and limbs onto power lines, cutting power to approximately 6,000 customers.								
36 PENNSYLVANIA, Eastern										
Eastern Pennsylvania	05-06	1600 EST-0600 EST						2	0	Snow
		Snow accumulated to 3 to 5 inches over the southern half of Eastern Pennsylvania and to 2 to 5 inches over the northern half. Snow-covered roads resulted in many automobile accidents.								
South Half of Eastern Pennsylvania	08-09	0900 EST-0500 EST						2	0	Wind, Drifting Snow
		Wind gusts, which reached as much as 46 MPH, drifted snow that had been covering the ground. The drifting and blowing snow reduced visibility to near zero and caused slippery roads, resulting in many automobile accidents. Snow drifts reached as high as 3 feet, closing some roads and stalling plows. East Vincent Township in Chester County had so many roads drifted shut and such treacherous traveling conditions that they declared a state of emergency.								
South and East Part of Eastern Pennsylvania	12	0400 to 1600 EST			0	0	4	0		Heavy Rain, Flooding
		Rainfall, which totaled up to 2 inches in some locations, caused considerable small stream flooding. Frozen ground and melting snow added to the runoff. The worst flooding was along some small streams in York County. A few buildings and some parking lots were flooded. Some automobiles in the parking lots were flooded. One man was swept away with his automobile when he drove around barricades and attempted to cross a bridge over a flooded stream. The man is still missing.								
36 PENNSYLVANIA, Western- NONE REPORTED										
37 RHODE ISLAND										
Statewide	12	Evening			0	0	4	0		High Winds, Rain
		Gale force east winds gusting to 50 to 60 mph blew down tree limbs, knocking out power to thousands across the state. Flying debris damaged cars in some places and signs were blown down. A tree fell on a motorist's car in Portsmouth. About 6,000 Pawtuxet Valley residents lost power during the storm.								
38 SOUTH CAROLINA										
Brattonville, York County	1	1530EST			0	1	4	0		Winds, Thunderstorm
		Thunderstorm winds overturned a mobile home, injuring one person.								
Greenville, Greenville County	1	a.m.			0	0	3	0		Heavy Rain, Flash Flood
		Heavy rains which began on the 31st caused considerable flash flooding in flood-prone areas of Greenville County.								
Northwestern South Carolina	5	a.m.			0	0	4	0		Freezing Rain
		Glaze accumulating from several hours of freezing rain broke limbs, disrupted utilities and contributed to numerous accidents. The area affected included that portion of the state northwest of a line from Aiken County to Marlboro County; however, the most serious damage was in the Piedmont, where power outages persisted until the 6th.								

STORM DATA AND UNUSUAL WEATHER PHENOMENA

FEBRUARY 1985

PLACE	DATE	TIME - LOCAL STANDARD	LENGTH OF PATH (MILES)	WIDTH OF PATH (YARDS)	NO. OF PERSONS		ESTIMATED ¹ DAMAGE		CHARACTER OF STORM
					KILLED	INJURED	PROPERTY	CROPS	
— SOUTH CAROLINA									
Statewide	11-12				0	0	5	2	Winds, Snow, Hail, Thunderstorms
	<p>An intense winter storm moved from the lower Mississippi Valley on the 11th to off the Eastern Seaboard on the 12th. Thunderstorm winds associated with a strong fast moving cold front caused considerable, but mostly minor damage throughout South Carolina, including:</p> <p>Greenwood County, Greenwood (2230EST, 2/11/85) Trees fell on several homes and cars, and electrical power was disrupted.</p> <p>Lexington County, West Columbia (2330EST, 2/11/85). Winds blew the top off a mobile home on Klapman Road.</p> <p>Chesterfield County, Chesterfield (0120EST, 2/12/85). Winds uprooted several trees in the Ivy Hill Subdivision and deroofed a large warehouse. Marble size hail was reported.</p> <p>Clarendon County, Manning (0150EST, 2/12/85). Winds downed a few trees and damaged the roof of a shopping center.</p> <p>Florence County, Mars Bluff Area (0150EST, 2/12/85). Winds damaged two mobile homes and caused considerable other minor damage.</p> <p>Lee County, Bishopville (0105EST, 2/12/85). Winds destroyed several small farm buildings, damaged a mobile home and caused widespread power outages.</p> <p>Cold air moving into the state early on the 12th caused snow flurries over northern, western and central South Carolina. Many schools in north-western areas were closed. Accumulations did not occur outside the northwestern parts of the state.</p>								
39 SOUTH DAKOTA — NONE REPORTED									
40 TENNESSEE									
Statewide	1-2				3	?	?	?	Heavy Snow, Sleet, Cold, and Flooding
	<p>Rain statewide changed to snow in the west on Jan 31 and spread eastward on Feb 1, continuing in the east until late on the 2nd. Snow and sleet amounts varied from 2 inches of snow or ice to near 1 foot in northcentral sections of the state. Some specific amounts by county include: Shelby 6 inches; Obion 8 inches; Robertson 8 inches; Dyer 9 inches; Sumner 8-11 inches; Davidson 7 inches; Anderson 8 inches. Sleet and some glaze fell in southcentral and parts of southeast Tennessee. Many areas sustained widespread and prolonged power outages due to downed poles and lines, prompting some to say it was the worst sleet and ice storm since 1951. The following counties in southcentral Tennessee, along with the amount of sleet/ice received, were especially hard hit: Giles 6 inches; where farm losses exceeded \$ 1 million in Coffee county, 7 inches; Lawrence 4-6 inches; Lincoln 5-6 inches; Grundy 7 inches; Franklin 5 inches; and Bedford 4 inches. Northeast Tennessee escaped with relatively minor snowfall. Many buildings in southcentral Tennessee collapsed or sustained roof damage from the weight of ice; a bottling company in Pulaski (Giles county) had its roof collapse, with a damage estimate of \$500,000. Vehicular traffic across the state slowed or stopped, with many vehicles abandoned by roadsides. Traffic accidents were very numerous. Three fatalities were directly attributed to cold temperatures. A 65-year old male was found under the snow near 1-40 at the Davidson-Wilson county line, dead apparently from hypothermia. A 40-year old male found outside of his apartment died due to hypothermia, and a 33-year old male in an unheated apartment in Memphis also died because of hypothermia. Nine other deaths were weather related, including 6 people who died in house fires starting from space heaters. Two frostbite cases were reported in Weakley county. Heavy rain in northeast Tennessee prior to the arrival of the cold air caused flooding of a church on Middle Creek in Sevierville.</p>								
Statewide	11-12				?	?	?	?	Heavy Snow
	<p>Snow that began in the west early on the 11th moved to east Tennessee later on the 11th and continued into the 12th. Snowfall amounts were heaviest in the higher elevations of the east. Specific amounts included: Shelby county 2 inches; Dyer county 4 inches; Madison county 8 inches; Hardin county 3 inches; Davidson county 2 inches; Knox county 9 inches; Coffee county 3 inches; Anderson county 4-5 inches; Hawkins county 13 inches; Johnson county 14 inches; and Marion county 2-3 inches in the valleys but nearly 2 feet in the higher elevations. Strong winds with gusts to 40 mph over the state caused snow drifts up to 7 feet high in Hamblen county; other areas had 2 to 3 foot drifts. 3 deaths were related to the weather conditions: a 36-year old female in Franklin county died in an auto accident on slick roads; a 70-year old male died in a car wreck on icy roads in Roane county; and a 64-year old male in Oak Ridge in Anderson county had a fatal heart attack while</p>								
— TENNESSEE									
Germantown, Shelby County	23	1730CST					5		Strong Winds
	<p>Strong winds from a thunderstorm blew down a house under construction. The finished house was expected to sell for \$300,000.</p>								
Madon, Madison County	23	1830CST							Strong winds
	<p>Strong winds from a thunderstorm blew down trees.</p>								
41 TEXAS, Northern									
North Texas	01	Aftn - 02 Mrgn			2	0	?	?	Winter Storm
	<p>A winter storm blanketed North Texas with snow ranging in depth from one to twelve inches. The heaviest reports were in Navarro, Henderson, Anderson, and Smith Counties.</p> <p>The snow began to fall during the afternoon and continued through the night, ending the morning of the 2nd. Amounts were generally two to four inches over North Texas, causing hazardous driving conditions and numerous traffic accidents.</p> <p>Two young girls, ages 8 and 10, fell into a small pond near Killeen and died from exposure early on the 2nd.</p>								
Wood County	22	1920CST				0	0	0	Hail
	<p>Spotters reported 3/4" hail in Quitman.</p>								
North Texas	23	Early AM							Severe Thunderstorms
	<p>Intense thunderstorms moved through North Texas during the early hours of the 23rd, producing high winds, hail, and heavy rains. Most property damage was attributed to the high winds as the storms passed, with flooding occurring later as the rains continued. Generally, hail reports were marble size or smaller.</p>								
Parker County	23	0025CST				0	0	?	Flooding
	<p>The Parker County Volunteer Fire Department reported two inches of rain in 50 minutes with flooding occurring in Weatherford.</p>								
Hamilton County	23	0050CST				0	0	?	Flooding
	<p>Heavy rains produced flooding in the city of Hamilton.</p>								
Hood County	23	0114CST				0	0	?	Thunderstorm Winds
	<p>Thunderstorm winds destroyed four mobile homes and damaged twelve others in the Indian Harbor area of Lake Granbury.</p>								
Tarrant, Dallas, Denton, and Collin Counties	23	0115CST-0230CST				0	0	?	Thunderstorm Winds
	<p>Thunderstorm winds first struck in west and southwest Fort Worth with power lines and trees being downed and numerous reports of roof damage at 0115CST. A Weather Service employee in Benbrook estimated winds at over 60 MPH, while another employee in south Fort Worth reported winds over 70 MPH at 0122CST. Fort Worth Meacham Field clocked wind gusts to 65 knots at 0127CST, with a hangar door being destroyed. At 0145CST, TV Channel 5 in east Fort Worth clocked winds to 60 MPH.</p> <p>In Denton at 0145CST, thunderstorm winds destroyed two mobile homes and several out-buildings and damaged a few others. Numerous power lines and trees were downed in the city, as were several tractor-trailer rigs overturned by the high winds.</p> <p>In Northern Dallas and Southern Collin Counties, numerous trees and power lines were downed and windows broken by the high winds around 0200CST. Despite the amount of widespread damage, no injuries were reported.</p>								
Bell County	23	0155CST				0	0	?	Thunderstorm Winds
	<p>Just south of Killeen, high thunderstorm winds tore the roof from a commercial building, then scattered the debris for about 300 ft. Part of the debris then inflicted damage on several nearby homes. At Ft. Hood, several buildings also sustained roof damage from the winds.</p>								
McLennan County	23	0212CST				0	0	?	Thunderstorm Winds
	<p>The Weather Service Office in Waco clocked winds to 58 MPH during a thunderstorm.</p>								

STORM DATA AND UNUSUAL WEATHER PHENOMENA

FEBRUARY 1985

PLACE	DATE	TIME - LOCAL STANDARD	LENGTH OF PATH (MILES)	WIDTH OF PATH (YARDS)	NO. OF PERSONS		ESTIMATED DAMAGE		CHARACTER OF STORM
					KILLED	INJURED	PROPERTY	CROPS	
TEXAS, Northern									
Coryell County	23	0220CST			0	0	?	?	Thunderstorm Winds
									Tree limbs and power lines were downed in the Copperas Cove area by high thunderstorm winds.
Limestone County	23	0310CST			0	0	4	?	Thunderstorm Winds
									Several roofs received damage from high thunderstorm winds in Mexia.
Angelina County	23	0930CST			0	0	4	?	Thunderstorm Winds
									Thunderstorm winds destroyed a farm house, a barn, and several out-buildings and heavily damaged several other small buildings near Lufkin.
North Texas	23	Morning			0	0	?	?	Flooding
									Heavy rains of up to 5 inches fell on saturated grounds and caused scattered reports of flooding in North Texas. Low-lying areas from Fannin and Lamar Counties in the north to Bell County in the south recorded flooding during the morning.
									At 1100CST, a woman and child were rescued from the roof of their stranded car near Killen by an Army helicopter. At 1140CST, several roads in Freestone, Henderson, and Anderson counties were under water. In addition, a bridge was reported washed out in Anderson County.
									Although the rains ended early in the day, the flood waters continued into the evening before receding.
41 TEXAS, Southern									
South Central and Southeast Texas	1st and 2nd				0	0	0	0	Snow
									The third winter snowstorm of the season hit South Central Texas with snowfall amounts generally in the 1 to 2 inch category. This storm was not as severe as the two previous storms. Sleet and ice was reported as far south as Corpus Christi and southeast to Houston. 3 to 5 inches of snow fell in portions of the Texas Hill Country west of Austin and northwest of San Antonio. San Antonio reported only a trace while Austin had 1.2 inches. Northern Val Verde County reported 1 to 2 inches. The ground was covered as far east as the Huntsville area. Schools and businesses were closed and travel was difficult. Portions of the Interstate Highways were closed for a period.
Southeast Texas	10	Evening							Wind and Hail
									A line of thunderstorms moved rapidly southeast through Southeast Texas, producing very high winds and hail in numerous counties. The effects of these storms within individual counties is listed separately below:
Lee County	10	1550CST			0	0	0	0	Hail
									Hail the size of golfballs fell in western Lee County near the town of Fedor.
Montgomery County	10	1702CST			0	0	0	0	Hail
									Dime size hail fell in the town of Montgomery.
Wharton County	10	1800CST			0	0	4	0	Hail, Wind
									Thunderstorm winds blew over a trailer in Mackay, located near Wharton. 3/4 inch hail fell also.
Brazoria, Fort Bend Counties	10	1900CST			0	0	?	0	Hail, Wind
									Thunderstorm winds damaged signs and blew over trees and fences in and around Brazosport. 3/4 inch hail fell also. Other wind damage was reported in the eastern part of Fort Bend County.
Harris County	10	1945CST			0	0	?	0	Hail, Wind
									High winds from severe thunderstorms did scattered damage over the southern part of Harris County. Winds were estimated at 65 MPH in Deer Park, just north of Pasadena. High winds blew over fences and trees in and around Clear Lake. 3/4 inch hail fell at Frienswood and Clear Lake. Three inches of rain fell in the area and street flooding resulted from the heavy rain. Street flooding was also reported in Baytown.
TEXAS, Southern									
Galveston County	10	2003-2115CST			0	0	4	0	Wind
									Thunderstorm winds did considerable damage to several areas of the county. High winds toppled big oak trees in Texas City, Hitchcock and the Santa Fe area. High winds blew off half of a roof of a mobile home between Dickinson and League City. Also, the roof of a house was severely damaged just south of League City. There was very high wind reported on Galveston Island, with damage to a restaurant, and at least one utility pole was downed. The NWS office in Galveston measured a wind gust to 54 MPH at 2105CST. Several old structures were damaged on Pelican Island.
Orange County	10	2100CST			0	0	4	0	Wind
									Thunderstorm winds blew over some trees and a utility pole near Beaumont.
Jefferson County	10	2125CST			0	0	0	0	Wind
									Thunderstorm winds were measured at 60 MPH by the NWS's automatic weather station at Sea Rim State Park. Damage was not reported.
Kerr County	22	2200CST			0	0	0	0	Flash Flooding
									Rainfall up to three inches over the western part of the county produced flash flooding of low water crossings and at least one automobile was washed off the roadway. One person had to be rescued from an inundated car. Some roads were closed because of the high water. The Guadalupe River rose to three feet out of its banks.
Burnet County	22	2200CST			0	0	5	0	Wind
									Thunderstorm winds estimated at near 70 MPH struck the Marble Falls and Burnet area. Numerous trees and signs were blown over. At least 60 to 80 trees were uprooted in the Marble Falls area. Several businesses and homes suffered damage, mostly to roofs. The winds destroyed the press box on the Marble Falls High School football stadium. In Burnet, high winds blew over a concrete block wall at a construction site.
Dimit County	22	2250CST			0	0	0	0	Wind
									Thunderstorm winds toppled trees at Asherton.
Bexar County	23	0205CST			0	0	0	0	Flash Flooding
									2 to 3 inch rains fell over the northwest part of the county and produced flash flooding. Several low water crossings, mostly on the northwest side of the city of San Antonio, were closed due to high water. Several motorists had to be rescued from automobiles that had been washed off the roadways.
Kerr County	23	0205CST			0	0	0	0	Flash Flooding
									2 to 3 inch rains flooded low water crossings in the western part of the county. Johnson Creek went on a sharp rise and at least one ranch road was closed due to the high water.
Williamson, Travis Counties	23	0530CST			1	0	0	0	Flash Flooding
									Heavy rains produced flash flooding over the western and northern parts of Travis County and southern Williamson County. Many low water crossings were flooded. At least three cars were washed off low places in the roads. One occupant of an automobile drowned when their automobile was washed off of FM Rd 2222 on the west side of Austin near Bull Creek.
Brazos County	23	0745CST			0	0	0	0	Flooding
									Heavy rains flooded many roadways in the county. Water was reported one foot deep in some homes along a creek. (place not reported)
41 TEXAS, Western ————— NONE REPORTED									
42 UTAH									
Box Elder, Cache, Davis, Salt Lake, Tooele, Utah, and Weber Counties	4	0000MST to 0700MST			0	0	1	0	Heavy Snow
									A vigorous snowstorm left 4 to 8 inches of snow in the valleys of northern Utah and up to 10 inches in the Wasatch Mountains. Some of the heavier amounts included 6 inches in Bountiful, 7 to 10 inches in Tooele, 4 inches in Provo and Ogden, and 4 inches in Salt Lake City.

STORM DATA AND UNUSUAL WEATHER PHENOMENA

FEBRUARY 1985

PLACE	DATE	TIME - LOCAL STANDARD	LENGTH OF PATH (MILES)	WIDTH OF PATH (YARDS)	NO. OF PERSONS		ESTIMATED DAMAGE		CHARACTER OF STORM
					KILLED	INJURED	PROPERTY	CROPS	

PLACE	DATE	TIME - LOCAL STANDARD	LENGTH OF PATH (MILES)	WIDTH OF PATH (YARDS)	NO. OF PERSONS		ESTIMATED DAMAGE		CHARACTER OF STORM
					KILLED	INJURED	PROPERTY	CROPS	

UTAH

Box Elder, Cache, Salt Lake, and Tooele Counties | 8 0400MST to 1700MST | 0 0 3 0 | High Winds

Strong winds in excess of 60 mph in the valleys and over 100 mph in the mountains, caused blowing and drifting snow, and snarled rush hour traffic on this Friday morning. The added burden of the drifted snow collapsed the roof at a pizza store in West Valley City. Eight to ten foot drifts occurred in some spots of the western Salt Lake Valley according to the Salt Lake Sheriff's office. At one point, 38 cars, 4 Utah Transit buses and a snowplow were trapped by snow-drifts.

Beaver, Box Elder, Cache, Davis, Iron, Salt Lake, Tooele, Utah, and Weber Counties | 20 0000MST to 1200MST | 0 0 1 0 | Heavy Snow

A heavy snow storm occurred in Western Utah on this date. Four to six inches of snow fell in the northwest, with over a foot of snow in the Wasatch Mountains from Utah County north. The storm then moved southward and dumped up to 10 inches of snow in Beaver and Iron counties. Some heavier amounts included 16 inches at the Alta ski resort, 15 inches at Snowbird, 12 inches at Snow Basin, 10 inches at Cedar City and 7 inches at Enterprise.

43 VERMONT

Statewide | 05 PM | 0 8 7 0 | Snowstorm

A major winter storm hit Vermont, keeping public safety crews busy. Hardest hit was Bennington County, where snow measured over 15 inches. Strong, gusty (non-convective) winds created drifting and visibility problems.

44 VIRGINIA

Southwest Virginia | 01 1030-2400EST | 0 0 4 0 | Flood

Heavy rains from a series of low pressure systems fell over frozen ground and caused localized flooding in the Powell, Clinch and the North Fork of the Holston Rivers in southwestern Virginia. The rivers overspilled their banks, cutting several county roads and state highways. Street flooding occurred in Damascus and Mendota in Washington County and schools were forced to close in Russell County.

Statewide | 05-0900-08 1200EST | 0 ? 5 0 | Sleet, Freezing Rain

Sleet and freezing rain spread across the entire state Tuesday, but quickly changed to rain in the extreme southeast portion of the state. By midday the precipitation changed to all freezing rain and freezing drizzle. The icing caused multiple accidents across northern and central Virginia, especially in the Washington D.C. suburbs where a 15 car pileup occurred, followed quickly by a second 13 car pileup. Schools closed early throughout interior portions of the state, and many remained closed or started late Wednesday morning due to icy conditions. There were numerous personal accidents caused by the ice and fairly widespread damage to trees and shrubs with occasional power outages.

45 WASHINGTON

Puget Sound Area | 01 Day | 0 0 0 0 | Heavy Snow

A strong Pacific frontal system and a "Puget Sound Convergence Zone" combined to cause up to 8 inches of snow before the afternoon was over. Numerous accidents and school and business closures resulted.

5 South of Bellingham, Whatcom County | 04 2330PST | 0 1 5 0 | Snow, Wind

Although only 3 inches of snow fell during the day, strong winds blew in behind the snow-producing cold front. State troopers blamed icy roads and near whitout conditions for a huge chain-reaction pileup on Interstate 5. As many as 14 vehicles collided, including 10 tractor trailers. The highway was closed for 8 hours.

Tacoma, Pierce County | 07 0813PST | 1 ? ? 0 | Snow, Ice

Rain falling ahead of a cold front turned to snow, and roads turned icy after the front passed through during the morning rush hour. A Tacoma man was killed in a skid-related pileup on Interstate 5.

2 East of North Bend, King County | 10 Afternoon | 1 0 0 0 | Avalanche

Rapid warming ahead of a frontal system resulted in a layer of freshly fallen snow becoming unstable. An experienced mountain climber plummeted 150 feet to his death in an avalanche on Mt. Si.

WASHINGTON

Grays Harbor County | 11 Day | 0 0 ? 0 | Wind

Another strong Pacific storm system carried very high winds into the Washington Coast. Sustained winds of 40 to 50 mph blew along much of the coastline. The Coast Guard at Grays Harbor measured gusts to near 60 mph.

46 WEST VIRGINIA

Southern Half of State | 01 All Day | 0 0 ? ? | Snow

Heavy snow fell all day. Snowfall totals were as high as 11 inches, making it the heaviest snowfall in the area since 1978. More than 2000 residents were without power.

Southern Half of State | 12 All Day | 0 0 ? ? | Snow

Heavy snow fell from 1100EST through the remainder of the day. Snowfall totals reached 10 inches.

47 WISCONSIN

Door County | 05 Nighttime-07 Morning | 0 0 0 0 | Heavy Snow

Extended-period, lake-effect snow squalls dumped between 6 and 30 inches of snow throughout Door County. Schools were closed and many activities were cancelled. Snowfall amounts included: Washington Island (6 inches), Sturgeon Bay (11 inches), Sister Bay (24 inches) and Egg Harbor/Jacksonport (30 inches).

48 WYOMING

Northwest Wyoming | 7-8 Night/Morning | 0 0 ? 0 | Snow

Up to 2 feet of snow fell in northwest Wyoming late on the 7th and early on the 8th. The 2-foot snowfall was recorded at Teton Village, just outside of Jackson, in Teton County. Blowing and drifting snow closed most of the roads in the area.

Natrona County | 8 1000MST | 0 0 3 0 | High Wind

Wind gust to 70 mph was logged along Casper Mountain in Natrona County. The gust blew an empty trailer truck off the road. Gusts to 60 mph were common near the south central mountains.

49 ALASKA, Northern

NO REPORT RECEIVED

49 ALASKA, Southern

NO REPORT RECEIVED

49 ALASKA, Southeastern

Juneau | 11 | 0 0 2 - | High Wind

Weak "Taku" type winds gusted to over 60 mph in the Douglas area, causing some minor damage and blowing away the anemometer of a WSFO Juneau forecaster.

Metlakatla | 13 | 0 0 5 - | High Wind

Strong low pressure system caused winds gusting over 55 mph at Annette. At Metlakatla, 7 miles North of that WSO, unofficial reports had winds over 100 mph. A large container used to protect equipment while on seagoing barges blew off the dock into the ocean.

Northern Southeast Alaska | 13-14 | 0 0 ? - | Heavy Snow

10-15 inches of snow dropped on northern sections of Southeast Alaska overnight. 13 1/2 inches were officially reported at the Juneau Airport between 3 PM on the 13th and 9 AM on the 14th. Schools were closed (something almost unheard of in Juneau) and many businesses and govt. agencies closed for parts of the day. At Wrangell, snow, rain, and winds caused at least 1 boat to sink.

STORM DATA AND UNUSUAL WEATHER PHENOMENA

FEBRUARY 1985

PLACE	DATE	TIME - LOCAL STANDARD	LENGTH OF PATH (MILES)	WIDTH OF PATH (YARDS)	NO. OF PERSONS		ESTIMATED DAMAGE		CHARACTER OF STORM
					KILLED	INJURED	PROPERTY	CROPS	

PLACE	DATE	TIME - LOCAL STANDARD	LENGTH OF PATH (MILES)	WIDTH OF PATH (YARDS)	KILLED	INJURED	PROPERTY	CROPS	CHARACTER OF STORM
ALASKA, Southeastern									
Juneau	20-21				0	0	?	-	Avalanche
<p>A moderate avalanche brought snow down to the back of a home on Wickersham Drive causing 2 families to evacuate. A huge avalanche occurred in the Eaglecrest Ski area. State Dept. of Transportation personnel took avalanche control measures, causing 8 significant releases along the Thane Highway south of Juneau.</p>									
Juneau	25-26				0	0	?	-	Avalanche
<p>A moderate avalanche came down the Behrends Ave. chute and stopped next to one home, causing families in the area to be evacuated. Avalanche control measures again caused significant releases along the Thane Highway.</p>									
50 HAWAII									
Oahu	14	0400-0800HST 1600-1900HST			0	0	5	0	Flash Flooding, Wind, Lightning
<p>Heavy thunderstorms developed over the Koolau Mountains of Oahu during the early morning hours and again during late afternoon and evening. A number of homes along the windward coast of Oahu sustained water damage as between 5 and 10 inches of rain fell in a short time over the mountains and along the strip from Waimanalo to Kahuku. There were also several reports of 1/2 inch hail from Kailua. Minor damage was sustained from several lightning-induced fires and strong gusty winds. Minor flooding also occurred over portions of Molokai during the morning rains.</p>									
51 PUERTO RICO ————— NONE REPORTED									
52 VIRGIN ISLANDS ————— NONE REPORTED									
53 PACIFIC ————— NONE REPORTED									

PLACE	DATE	TIME - LOCAL STANDARD	LENGTH OF PATH (MILES)	WIDTH OF PATH (YARDS)	KILLED	INJURED	PROPERTY	CROPS	CHARACTER OF STORM

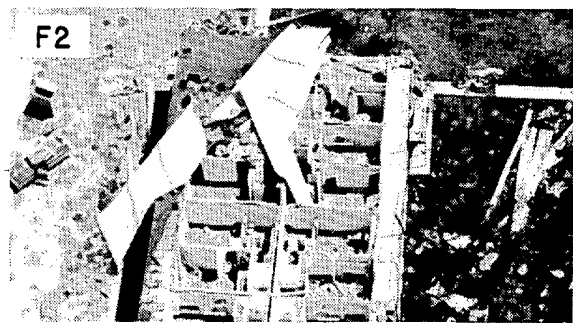
REFERENCE NOTES

- † Storm damage categories are from 1 to 9 as follows:
- 1 Less than \$50
 - 2 \$50 to \$500
 - 3 \$500 to \$5,000
 - 4 \$5,000 to \$50,000
 - 5 \$50,000 to \$500,000
 - 6 \$500,000 to \$5 Million
 - 7 \$5 Million to \$50 Million
 - 8 \$50 Million to \$500 Million
 - 9 \$500 Million to \$5 Billion

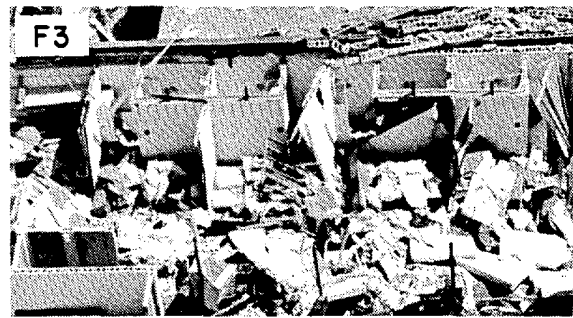
- * Miles instead of yards
- ** Yards instead of miles
- @ Includes heavy sleet storm
- # Freezing drizzle and freezing rain, commonly known as glaze
- ≠ Not received or incomplete
- o/c Under Estimated Damage, Property/Crops, indicates crop damage amount is included in the figure given

Definition of Fujita Tornado Scale (F scale)

(F0) Gale tornado (40-72 mph): Light damage
Some damage to chimneys; break branches off trees; push over shallow-rooted trees; damage sign boards.



(F1) Moderate tornado (73-112 mph): Moderate damage
The lower limit (73 mph) is the beginning of hurricane wind speed; peel surface off roofs; mobile homes pushed off foundations or overturned; moving autos pushed off the roads.



(F2) Significant tornado (113-157 mph): Considerable damage
Roofs torn off frame houses; mobile homes demolished; boxcars pushed over; large trees snapped or uprooted; light-object missiles generated.

(F3) Severe tornado (158-206 mph): Severe damage
Roofs and some walls torn off well-constructed houses; trains overturned; most trees in forest uprooted; heavy cars lifted off ground and thrown.



(F4) Devastating tornado (207-260 mph): Devastating damage
Well-constructed houses leveled; structure with weak foundation blown off some distance; cars thrown and large missiles generated.

(F5) Incredible tornado (261-318 mph): Incredible damage
Strong frame houses lifted off foundations and carried considerable distance to disintegrate; automobile-sized missiles fly through the air in excess of 100 m; trees debarked; incredible phenomena will occur.



(F6-F12) (319 mph to Mach 1, the speed of sound):
The maximum wind speeds of tornadoes are not expected to reach the F6 wind speeds.

(F0+F1) *Weak Tornado*
(F2+F3) *Strong Tornado*
(F4+F5) *Violent Tornado*

From J. Atmos. Sci., August 1981, p. 1517-1519

USCOMM-NOAA-ASHEVILLE, NC 1984-2500

DEPARTMENT OF COMMERCE
NATIONAL OCEANIC AND ATMOSPHERIC ADMINISTRATION
NATIONAL ENVIRONMENTAL SATELLITE, DATA, AND INFORMATION SERVICE
NATIONAL CLIMATIC DATA CENTER
FEDERAL BUILDING
ASHEVILLE, N.C. 28801

BULK RATE
POSTAGE & FEES PAID
United States Department Of Commerce
NOAA Permit No. G - 19