

NOVEMBER 1984

VOLUME 26

NUMBER 11

STORM DATA



"I CERTIFY THAT THIS IS AN OFFICIAL PUBLICATION OF THE NATIONAL OCEANIC AND ATMOSPHERIC ADMINISTRATION AND IS COMPILED FROM INFORMATION RECEIVED AT THE NATIONAL CLIMATIC DATA CENTER, ASHEVILLE, N.C. 28801"

Kenneth D. Hadler

DIRECTOR
NATIONAL CLIMATIC DATA CENTER

noaa

NATIONAL OCEANIC AND
ATMOSPHERIC ADMINISTRATION

NATIONAL ENVIRONMENTAL SATELLITE,
DATA, AND INFORMATION SERVICE

NATIONAL CLIMATIC DATA CENTER
ASHEVILLE, N.C.

Over the next few months, the National Climatic Data Center will seek competitive proposals for a one-year contract (effective 10-1-85, optional renewal for three to five years) to provide the pictures, summaries, narratives and analyses used in this publication. The contract will be awarded by the Eastern Administrative Support Center, Norfolk, Virginia. Notice of solicitation will appear in the Commerce Business Daily.

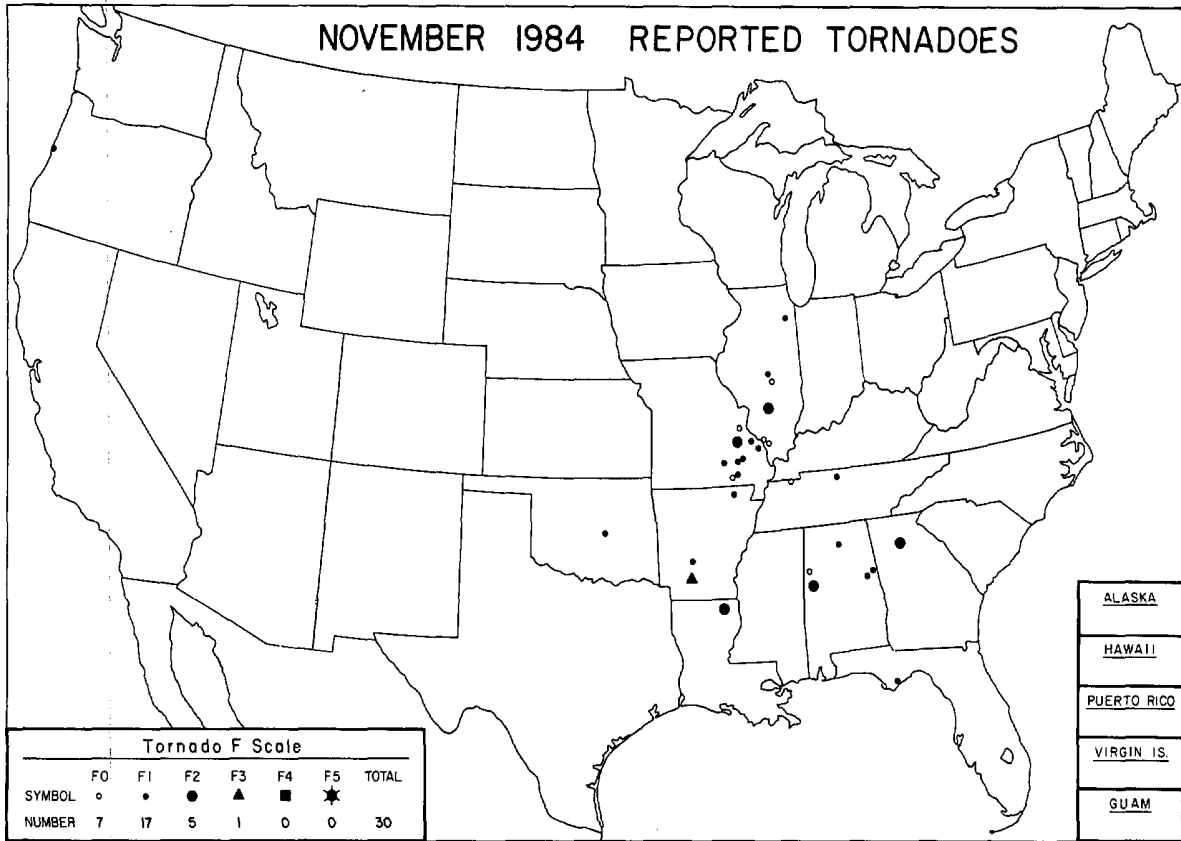
C O N T E N T S

	<u>Page</u>
Outstanding Storms of the Month.....	4
Storm Data and Unusual Weather Phenomena.....	10
Storm Summary.....	20
Reference Notes.....	21
"F" Scale Definitions.....	21

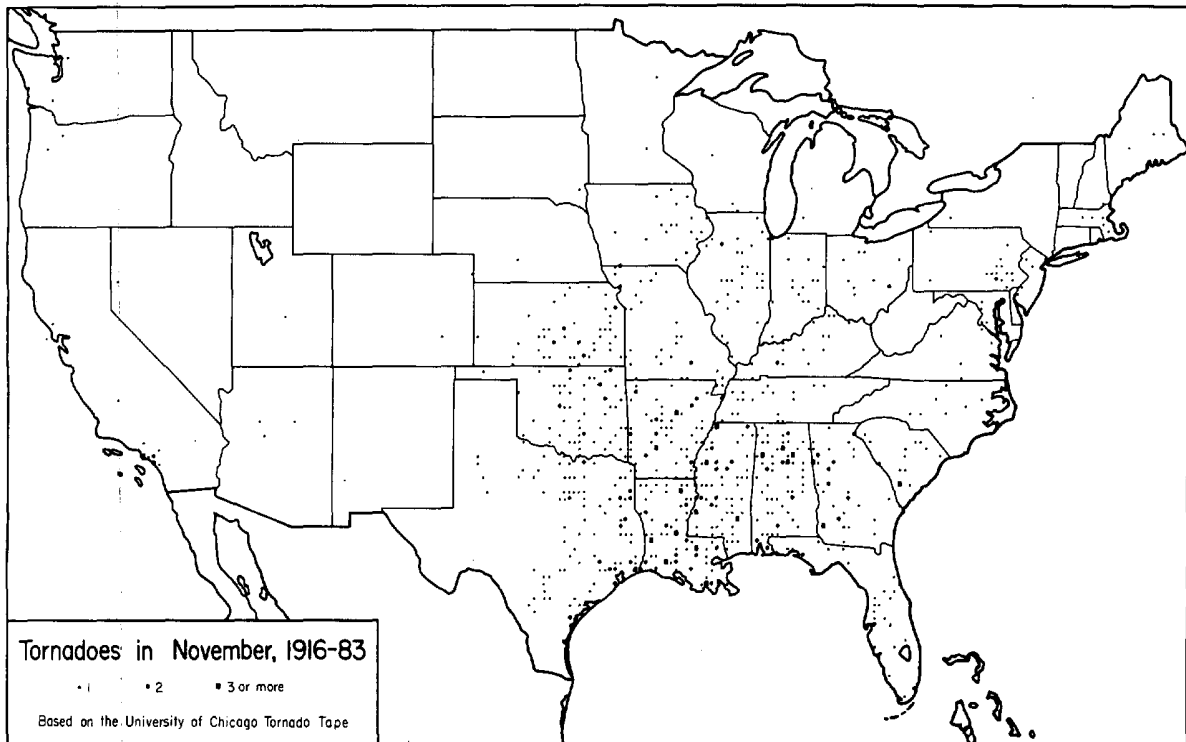
NOTE: The section on Outstanding Storms of the Month is prepared by Professor T. Theodore Fujita, editor, and Duane J. Stiegler, associate editor, University of Chicago. The narrative descriptions of Storms by State and Summaries of Hurricanes and Tropical Storms are prepared by the National Weather Service. The National Climatic Data Center compiles the statistics on deaths, injuries, and damage. This publication contains our best information on Storms, but, due to the difficulties inherent in collection of this type of data, it is not all-inclusive. Late reports and corrections will be carried quarterly.

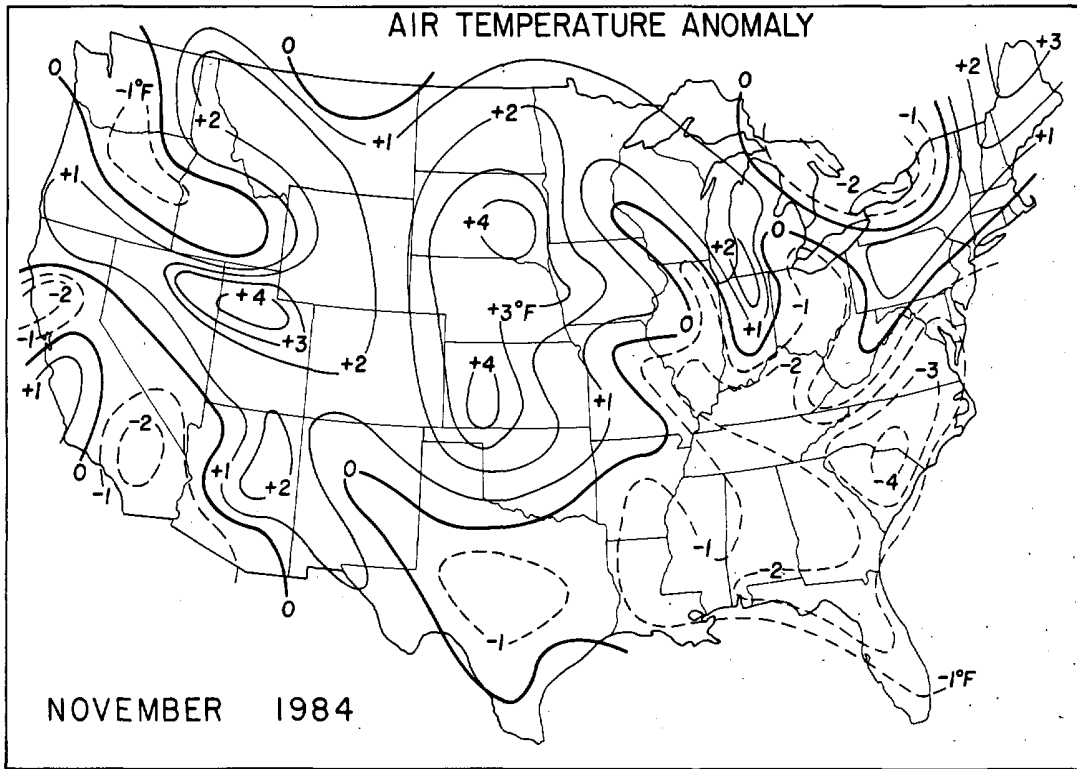
STORM DATA - (ISSN 0039-1972) is published monthly. Subscription, pricing, and ordering information is available from:
National Climatic Data Center, National Environmental Satellite, Data, and Information Service, NOAA, Federal Building, Asheville, NC 28801-2696.

OUTSTANDING STORMS OF THE MONTH



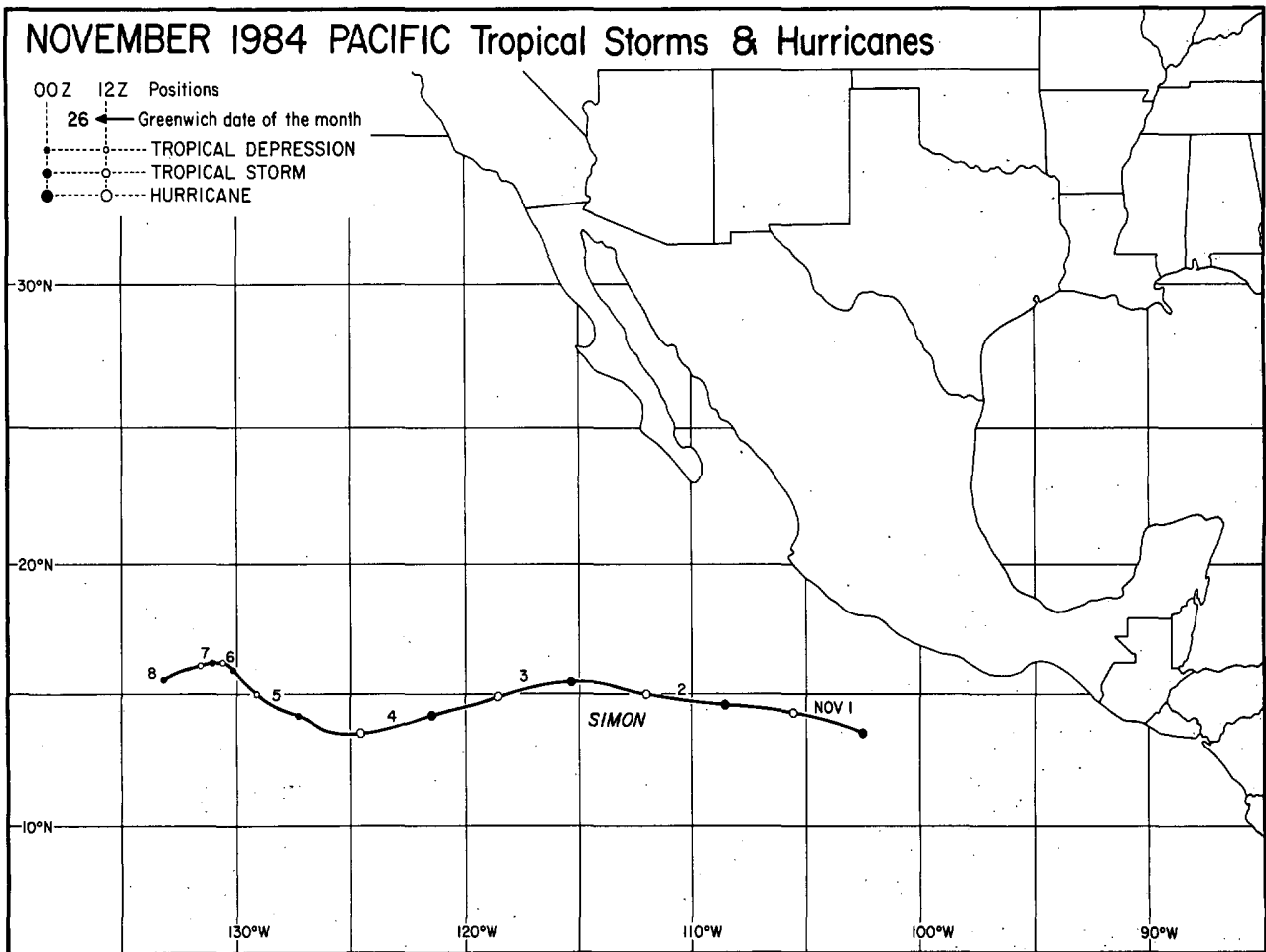
<ul style="list-style-type: none"> ● COMPLETE REPORT RECEIVED ○ PRELIMINARY REPORT RECEIVED ○ REPORT NOT RECEIVED <p>(N) northern (W) western (S) southern (C) central (E) eastern (O) coastal (SE) southeastern</p>	<table style="width: 100%; border-collapse: collapse;"> <tbody> <tr> <td>● 1AL</td><td>● 7DE</td><td>● 14KS</td><td>● 21MN</td><td>● 28NJ</td><td>● 33OH</td><td>● 39SD</td><td>● 44VA</td><td>● 49AK(SE)</td> </tr> <tr> <td>● 2AZ</td><td>● 8FL</td><td>● 15KY</td><td>● 22MS</td><td>● 29NM</td><td>● 34OK</td><td>● 40TN</td><td>● 45WA</td><td>● 50HI</td> </tr> <tr> <td>● 3AR</td><td>● 9GA</td><td>● 16LA</td><td>● 23MO</td><td>● 30NY(O)</td><td>● 35OR</td><td>● 41TX(N)</td><td>● 46WV</td><td>● 51PR</td> </tr> <tr> <td>● 4CA(N)</td><td>● 10ID</td><td>● 17ME</td><td>● 24MT</td><td>● 30NY(C)</td><td>● 36PA(E)</td><td>● 41TX(S)</td><td>● 47WI</td><td>● 52VI</td> </tr> <tr> <td>● 4CA(S)</td><td>● 11IL</td><td>● 18MD</td><td>● 25NE</td><td>● 30NY(W)</td><td>● 36PA(W)</td><td>● 41TX(W)</td><td>● 48WY</td><td>● 53PC</td> </tr> <tr> <td>● 5CO</td><td>● 12IN</td><td>● 19MA</td><td>● 26NV</td><td>● 31NC</td><td>● 37RI</td><td>● 42UT</td><td>● 49AK(N)</td><td></td> </tr> <tr> <td>● 6CT</td><td>● 13IA</td><td>● 20MI</td><td>● 27MH</td><td>● 32ND</td><td>● 38SC</td><td>● 43VT</td><td>○ 49AK(S)</td><td></td> </tr> </tbody> </table>	● 1AL	● 7DE	● 14KS	● 21MN	● 28NJ	● 33OH	● 39SD	● 44VA	● 49AK(SE)	● 2AZ	● 8FL	● 15KY	● 22MS	● 29NM	● 34OK	● 40TN	● 45WA	● 50HI	● 3AR	● 9GA	● 16LA	● 23MO	● 30NY(O)	● 35OR	● 41TX(N)	● 46WV	● 51PR	● 4CA(N)	● 10ID	● 17ME	● 24MT	● 30NY(C)	● 36PA(E)	● 41TX(S)	● 47WI	● 52VI	● 4CA(S)	● 11IL	● 18MD	● 25NE	● 30NY(W)	● 36PA(W)	● 41TX(W)	● 48WY	● 53PC	● 5CO	● 12IN	● 19MA	● 26NV	● 31NC	● 37RI	● 42UT	● 49AK(N)		● 6CT	● 13IA	● 20MI	● 27MH	● 32ND	● 38SC	● 43VT	○ 49AK(S)	
● 1AL	● 7DE	● 14KS	● 21MN	● 28NJ	● 33OH	● 39SD	● 44VA	● 49AK(SE)																																																								
● 2AZ	● 8FL	● 15KY	● 22MS	● 29NM	● 34OK	● 40TN	● 45WA	● 50HI																																																								
● 3AR	● 9GA	● 16LA	● 23MO	● 30NY(O)	● 35OR	● 41TX(N)	● 46WV	● 51PR																																																								
● 4CA(N)	● 10ID	● 17ME	● 24MT	● 30NY(C)	● 36PA(E)	● 41TX(S)	● 47WI	● 52VI																																																								
● 4CA(S)	● 11IL	● 18MD	● 25NE	● 30NY(W)	● 36PA(W)	● 41TX(W)	● 48WY	● 53PC																																																								
● 5CO	● 12IN	● 19MA	● 26NV	● 31NC	● 37RI	● 42UT	● 49AK(N)																																																									
● 6CT	● 13IA	● 20MI	● 27MH	● 32ND	● 38SC	● 43VT	○ 49AK(S)																																																									





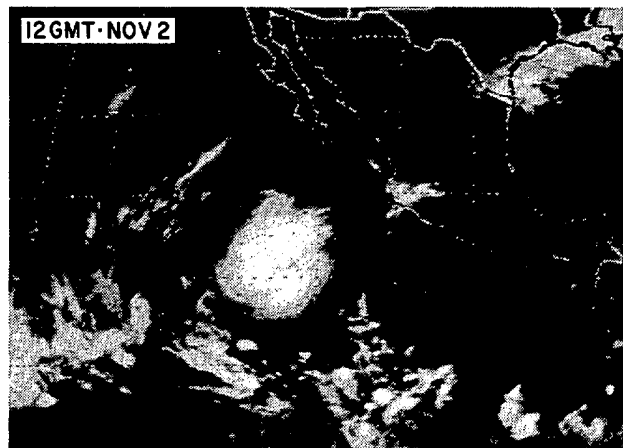
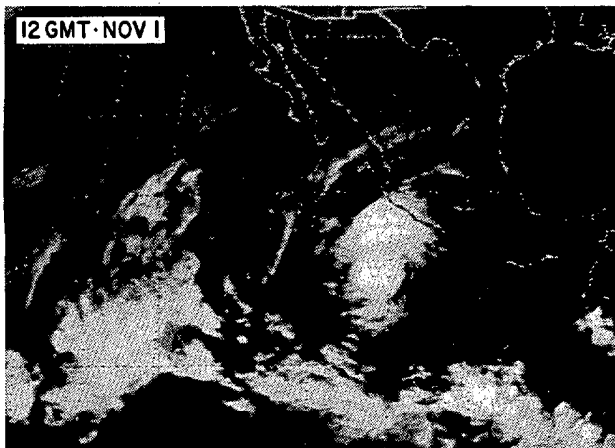
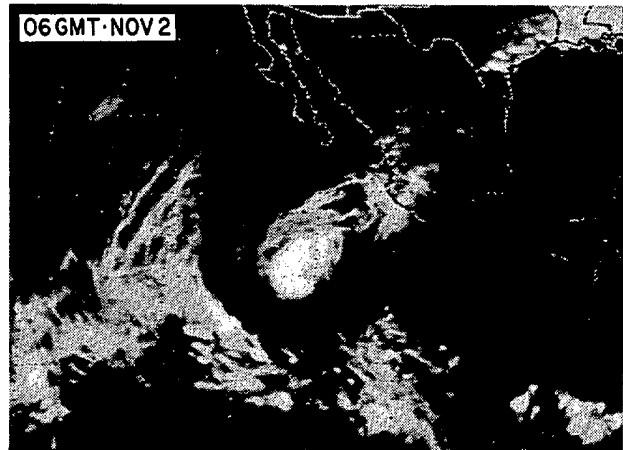
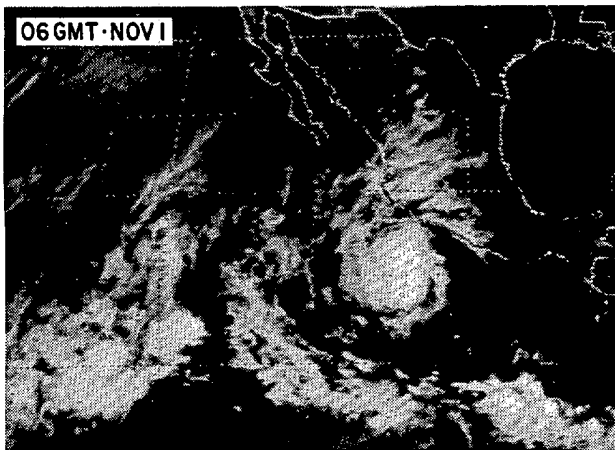
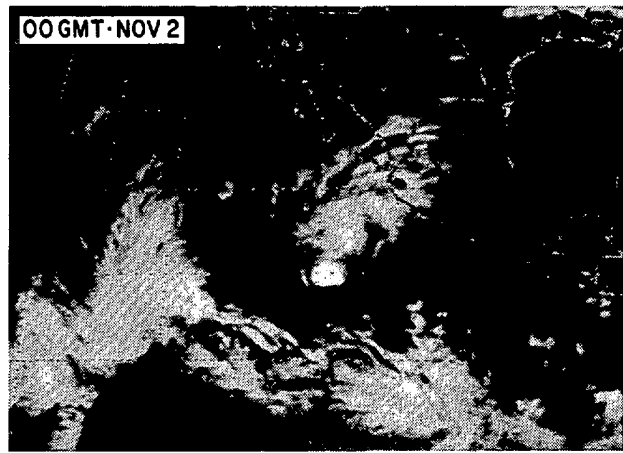
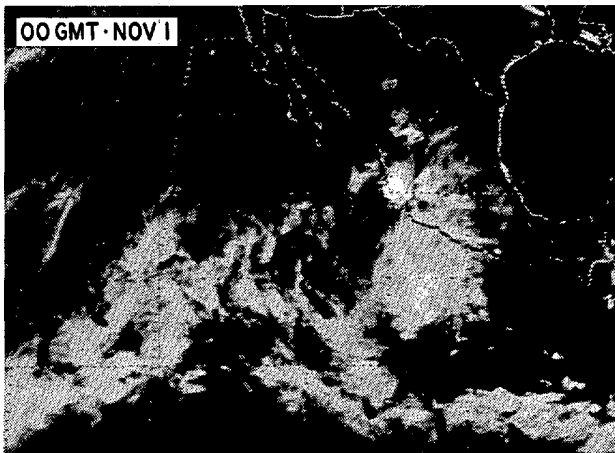
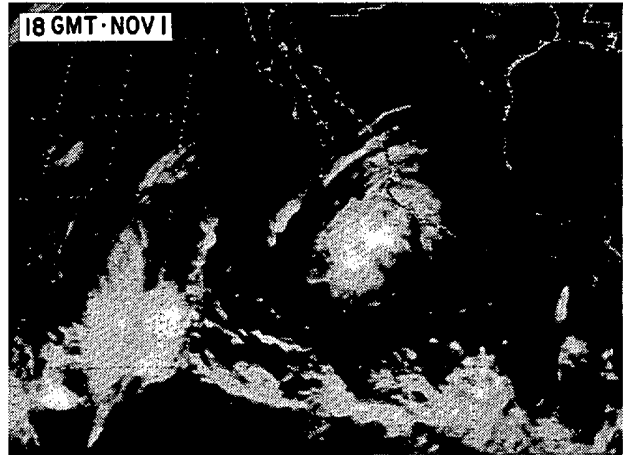
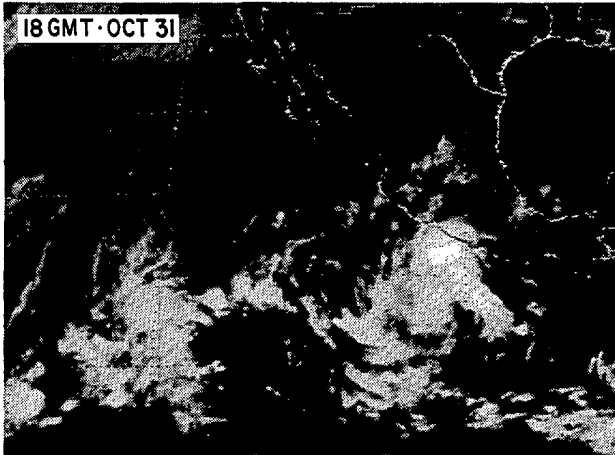
---Data base from NOAA/USDA Joint Agricultural Weather Facility.

TROPICAL STORMS AND HURRICANES



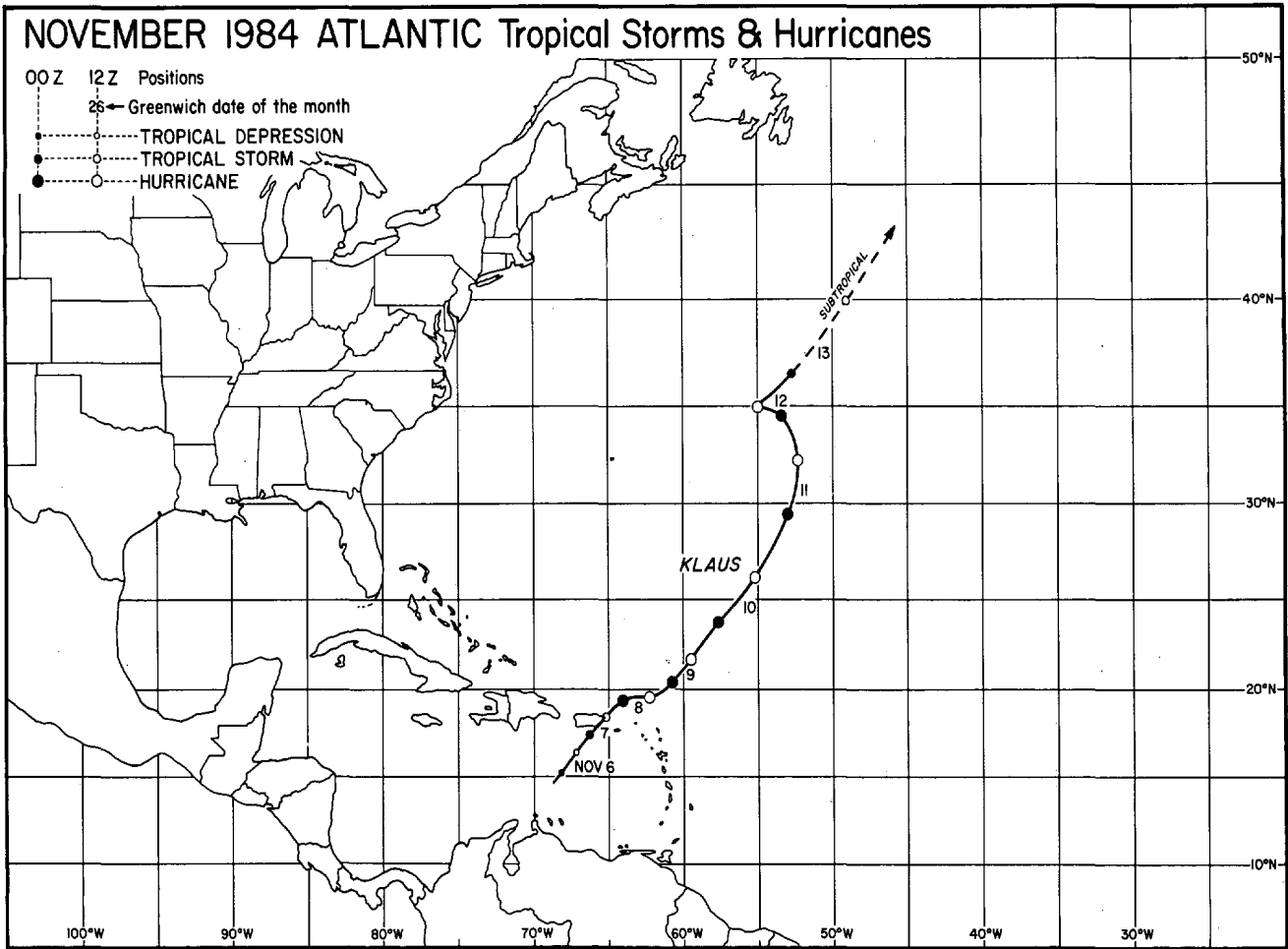
---Best track data from NWSFO, San Francisco, California.

TROPICAL STORMS and HURRICANES ----continued



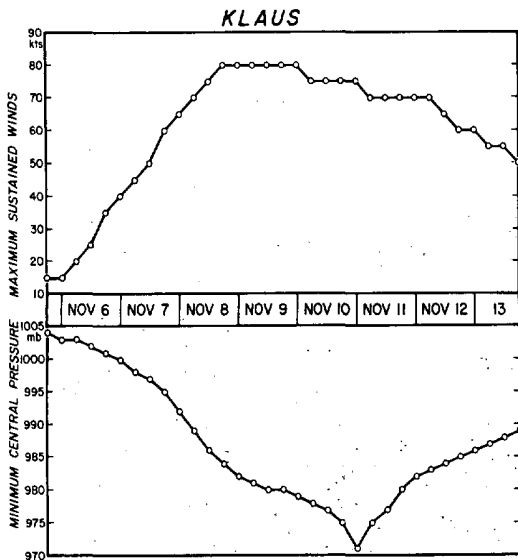
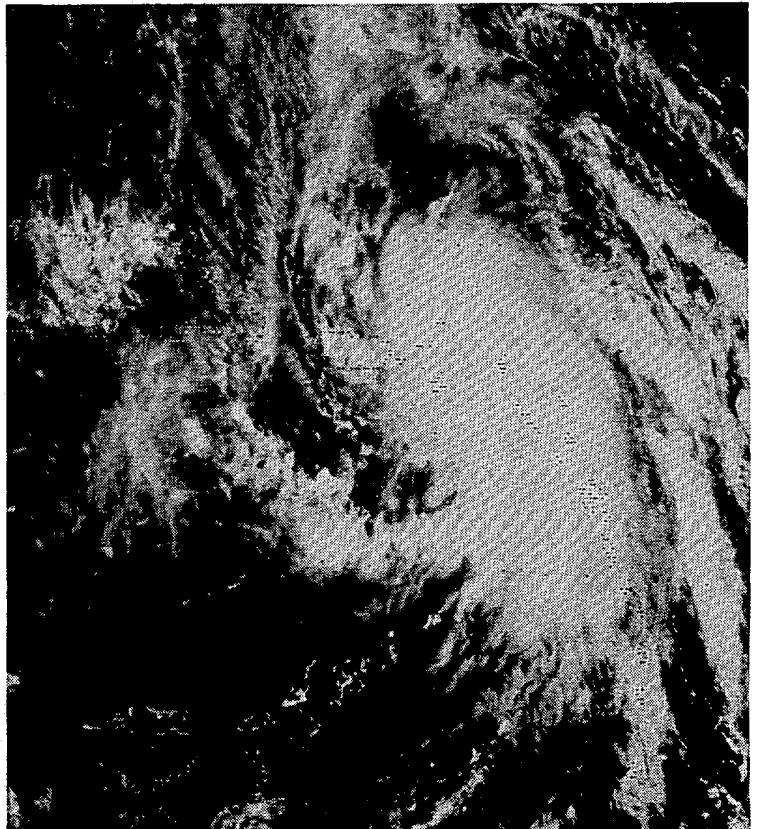
GOES East satellite, visible images of Tropical Storm SIMON at 6 hour intervals during its formation and development off the coast of Mexico. ---Photos from NESDIS.

TROPICAL STORMS and HURRICANES ----continued



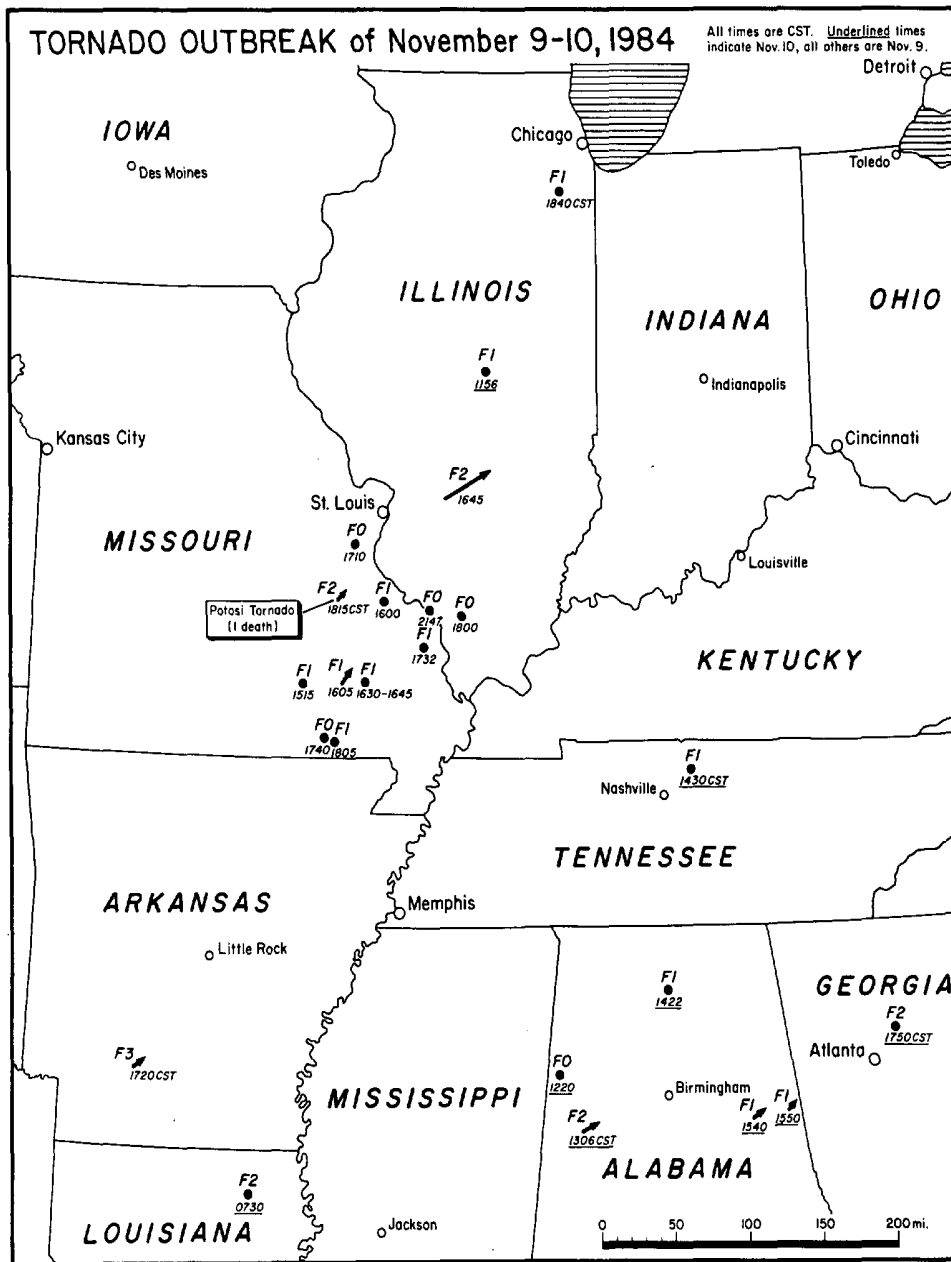
---Best track data from the National Hurricane Center, Miami, Florida.

RIGHT: A GOES East satellite, visible image of KLAUS in tropical storm stage as it passed over Puerto Rico and the Virgin Islands. At the time of the photo, 1400 GMT on November 7, 1984, the maximum sustained winds were estimated to be about 55 kts (63 mph). ---Photo from NHC.



1. TORNADO OUTBREAK in the EAST-CENTRAL U.S. on November 9-10, 1984

On November 9th and 10th, 23 tornadoes struck the east-central United States in a single outbreak that accounted for 77% of the total tornadoes reported nationwide during November. The breakdown by intensity is: 5-F0, 12-F1, 5-F2, and 1-F3. Only one tornado was a killer, causing one death as it struck Potosi, Missouri (see photos). ---Mapping by the University of Chicago from Storm Data listings.



Destroyed and damaged mobile homes at a sales park where the tornado in Potosi, Missouri started.

TORNADO OUTBREAK in the EAST-CENTRAL U.S. ----continued



Skeletal remains of a flipped over mobile home (left) and debris strewn from the mobile home sales park (right) in Potosi.



The Potosi Elementary School which sustained loss due to damage estimated at \$1,300,000.

---Photos by Guy Tucker, St. Louis Area NWSFO, St. Charles, MO.

STORM DATA AND UNUSUAL WEATHER PHENOMENA

NOVEMBER 1984

PLACE	DATE	TIME - LOCAL STANDARD	LENGTH OF PATH (MILES)	WIDTH OF PATH (YARDS)	NO. OF PERSONS		ESTIMATED DAMAGE		CHARACTER OF STORM
					KILLED	INJURED	PROPERTY	CROPS	

PLACE	DATE	TIME - LOCAL STANDARD	LENGTH OF PATH (MILES)	WIDTH OF PATH (YARDS)	NO. OF PERSONS		ESTIMATED DAMAGE		CHARACTER OF STORM
					KILLED	INJURED	PROPERTY	CROPS	

1 ALABAMA

Lamar County	10 1220CST	1.5	50	0	0	3	0	Tornado (F0)	A small tornado touched down just south of Hightoy and moved ENE. Witnesses saw a funnel, but damage was described as very light. Some power lines were downed and trees were damaged. A large oak tree was splintered by lightning in nearby Vernon.
Southern Winston County	10 1300-1315CST				0	0	2	0	Wind
Pickens and Tuscaloosa Counties	10 1306CST	14	400	0	0	5	0	Tornado (F2)	A tornado followed an intermittent path ENE from near the Pickens/Tuscaloosa County line SW of Elrod to near the Northport area, where it was last reported around 1330CST. The storm was apparently most intense as it crossed Tuscaloosa County Road 17 south of Buhl and in the Coker area near U.S. 81. Some 50 homes and farm structures were damaged. A mobile home was destroyed south of Buhl and a church was heavily damaged. Numerous trees were uprooted or snapped off and utility lines were downed.
SW Fayette County	10 1315CST								Funnel Cloud
Akron area, Hale County	10 1340CST				0	0	2	0	Wind
Evergreen area, SW Morgan County	10 1420CST				0	0	4	0	Wind
10 E Hartselle, Morgan County	10 1422CST	1.5	40	0	0	4	0	Tornado (F1)	Members of one family watched from a ditch as a tornado funnel skipped by their house and approached the home of a neighbor. Fortunately, the main part of the storm missed the house as it downed trees and destroyed some sheds. Only a few shingles were blown off the home. The tornado apparently continued along an intermittent path toward the NE before lifting near the intersection of Alabama 36 and Six Mile Road.
Selma, Dallas County	10 1450CST								Funnel cloud
Prattville area, Autauga County	10 1520CST				0	0	3	0	Wind
Clay County	10 1540CST	9.5	100	0	0	4	0	Tornado (F1)	A small tornado moved rapidly NE along an intermittent path from near Harkins Cross Roads to just NE of Lineville. Witnesses reported spotting the tornado funnel at Lineville. Damage included trees and power lines down, one small plane at the Ashland-Lineville Airport destroyed and another heavily damaged, roof damage to some buildings and plate glass windows blown out. The storm also momentarily picked up a police car in Lineville with the Chief of Police in the vehicle. No injuries were reported. One group of people, that had been standing outside near a small shopping center in Lineville, apparently narrowly escaped injury by taking shelter after being warned by a passing police officer about two minutes before the plate glass windows blew out.
Yellow Valley, Clay County	10 1545CST				0	0	3	0	Wind
Randolph County	10 1550CST	5	50	0	0	5	0	Tornado (F1)	A tornado apparently followed an intermittent path from near Woodland to near Bethel. Most of the damage in Woodland was to the unoccupied Woodland High School. Damage to the school included windows to some class rooms blown out, about 1/2 the roof to the gym destroyed and roof flashing ripped out all around the building. Twin I-beam girders that supported the scoreboard at the football field were twisted as the scoreboard was blown to the ground. Damage in the Bethel area included two large chicken houses destroyed, a third heavily damaged, and some 3,500 chickens lost to the storm. Trees and power lines were also downed in some spots. Power poles were broken in the Bethel and Woodland area. Some debris from the destroyed chicken houses in Bethel was reported to have been found on Blackjack Mountain across the Georgia line some six miles away.
Elmore County	10 1550CST				0	0	3	0	Wind

ALABAMA

Randolph County	10 1555-1620CST				0	0	?	?	Wind
Montgomery area, Montgomery County	10 1555CST				0	0	3	0	Wind
SE Coosa County	10 1605CST				0	0	4	0	Wind
Opelika, Lee County	10 1634CST				0	0	3	0	Wind

2 ARIZONA

NONE REPORTED

3 ARKANSAS

Cleburne County	01 0225 CST				0	0	-	-	Hail
Benton County	01 1030 CST				0	0	4	-	Wind
Washington County	01 1030 CST				0	1	3	-	Wind
Clark County	01 1124 CST	2.5	50	0	1	5	-	-	Tornado (F1)/Wind
Pulaski County	01 1345 CST				0	0	-	-	Funnel Cloud
Greene County	01 about 1400 CST				0	0	3	-	Wind
Grant County	01 1405 CST				0	0	4	-	Wind
Randolph County	01 1406 CST	5	100	0	0	4	-	-	Tornado (F1)
Saline County	01 1408 CST				0	0	-	-	Funnel Cloud
Pulaski County	01 1410 CST				0	0	5	-	Wind
Clay County	01 about 1430 CST				0	0	4	-	Wind
White County	01 1430 CST				0	0	-	-	Funnel Cloud
Mississippi County	01 about 1500 CST				0	0	3	-	Wind

STORM DATA AND UNUSUAL WEATHER PHENOMENA

NOVEMBER 1984

PLACE	DATE	TIME - LOCAL STANDARD	LENGTH OF PATH (MILES)	WIDTH OF PATH (YARDS)	NO. OF PERSONS		ESTIMATED DAMAGE		CHARACTER OF STORM
					KILLED	INJURED	PROPERTY	CROPS	
— ARKANSAS									
Madison County	01	2245 - 2305 CST			0	0	5	-	Wind
		Damaging winds from thunderstorms moved through the county. The areas affected were Wesley and, later on, Clifty. Trees and power lines were downed. Three chicken houses, one large tool shed, and other farm buildings were destroyed.							
Newton County	09	1458 CST			0	0	?	?	Hail/Wind
		Hail was reported 5 miles south of Jasper ranging in size from 1 inch to 1 1/4 inches. Some trees were uprooted by winds estimated between 60 and 70 mph.							
Marion County	09	1540 CST			0	0	-	-	Hail
		A State Trooper reported one inch diameter hail 5 miles south of Yellville.							
Fulton County	09	1625 CST			0	0	-	-	Hail
		Golfball and larger hail fell from Salem to near Glencoe.							
Saline County	09	1637 CST			0	0	-	-	Hail
		Golfball-size hail was reported at Alum Fork and Lake Winona.							
Pulaski County	09	about 1700 CST			0	0	-	-	Hail
		Golfball-sized hail was reported by the Sheriff's Office at Roland.							
Nevada and Ouachita Counties	09	1720 CST	6	1/4 mi.	0	0	4	6	Tornado (F3)
		A strong tornado touched down one mile northwest of Bluff City and traveled northeast, just missing the community of Reader, and lifting off just before reaching the Little Missouri River. It damaged one mobile home, one farm building, and one abandoned house. Most of the damage was done to timber. The tornado levelled 500 acres of pine and 650 acres of hardwood.							
Woodruff County	09	1918 and 1922 CST			0	0	-	-	Funnel Clouds
		Two separate funnel clouds were reported to the State Police by the public. Both sightings were near McCrory.							
Pulaski County	09	2010 - 2052 CST			0	0	?	-	Hail
		Hail, ranging in size from 3/4 inch to 1 3/4 inches, was reported across the county. The areas affected were Morgan, Little Rock, and North Little Rock.							
Mississippi County	09	2150 CST			0	0	4	-	Lightning
		Lightning struck a rural residence near Whitten, starting a fire. The home was completely destroyed.							
Prairie County	09	2155 CST			0	0	-	-	Funnel Cloud
		A funnel cloud was reported over Hazen.							
Garland County	09	2208 - 2235 CST			0	0	4	-	Hail/Wind
		Strong wind gusts damaged part of the roof, lawn furniture, and the large street sign of a motel in Hot Springs. Winds were estimated at 65 mph. Also large hail, up to 1 3/4 inches, fell 5 miles west of Hot Springs. Many trees and power lines were downed across the county.							
Mississippi County	10	0015 CST			0	0	4	-	Lightning
		A rural home was totally destroyed by fire that resulted from a lightning strike. The home was located one mile north of the county line along Highway 61.							
Garland County	26	1605 CST			0	0	?	-	Heavy rain
		The State Police reported street flooding in Hot Springs from heavy rain.							
Hempstead County	26	1855 CST			0	0	4	-	Wind
		A thunderstorm moved through Hope, producing strong winds which blew down numerous trees and power lines across the south half of the city.							
Cleburne County	26	about 1930 CST			0	0	?	-	Heavy rain
		Urban flooding occurred in Heber Springs after almost 3/4 inches of rain fell across the area.							
St. Francis County	26	2055 CST			0	0	-	-	Funnel Cloud
		A civil defense official reported seeing a funnel cloud just southeast of Goodwin, in the southwest section of the county.							
Pulaski County	26	2100 - 2300 CST			0	0	4	-	Flash Flooding
		Urban flooding was reported across many sections of the county, along the flood-prone areas. The main areas affected by the 3.7 inches of rainfall were along the Bayou Meto in Jacksonville; along Rock, Fourche, and Grassy Flats Creeks in western and southwestern Little Rock; and at several street intersections in North Little Rock. Three mobile homes were lost due to high water in Gravel Ridge.							
— ARKANSAS									
Union County	26	about 2140 CST			0	0	?	-	Heavy rain
		Heavy rain produced urban flooding in many areas of El Dorado and some of the county roads.							
Ouachita County	26	2145 CST			0	0	?	-	Heavy Rain
		About a 3/4-inch rainfall flooded some county roads and produced minor urban flooding at Camden.							
Independence County	26	about 2200 CST			0	0	3	?	Heavy Rain
		Heavy rain fell across the county flooding many roads, especially in the northern half. Some vehicles were flooded.							
Faulkner County	26	2210 CST			0	0	?	-	Heavy Rain
		Heavy rains flooded some county roads, requiring the use of barricades to block off the flooded sections.							
Randolph County	26	about 2350 CST			0	0	4	-	Flash Flooding
		Heavy rains produced flash flooding along the river banks of the Eleven Point River at Dalton. One travel trailer, a 20-foot boat with an outboard motor, and a motorcycle were all swept away by the current.							
Izard County	26	Evening			0	0	5	-	Flash Flooding
		A 5-inch general rainfall across the county washed off at least 3 low water bridges and damaged many county roads.							
Sharp County	26	Evening			0	0	5	-	Flooding
		The Spring River rose out of its banks at Hardy, causing extensive road damage. The strong current took down a temporary construction bridge that was being used to build a replacement bridge for the one that was taken down during the December of 1982 flood. One large crane and other construction equipment was lost.							
Craighead County	27	about 0300 CST			0	0	4	-	Heavy Rain
		Heavy rains flooded a dozen homes in Bono with water up to 3 inches deep.							
4 CALIFORNIA, Northern									
Northwest California Coast	02	0800 - 1200 PST			0	0	5	0	Wind/Rain
		Winds and heavy rain associated with a Pacific cold front blew down power lines and uprooted trees. Several boats were disabled 45 miles west of Fort Bragg. Storm total rain at Wilder Ridge was 13 inches.							
Sierra Nevada, Mount Shasta/Siskiyou	12-13	Both Days			0	0	0	0	Snow
		Moderate to heavy snow was reported throughout the regions. Totals were in excess of one foot at most ski areas; and blowing and drifting snow closed three major highways (I5, I80 & US50) at one time or another during the storm.							
Sacramento Valley	27	Morning			0	0	?	?	Wind
		Strong pre-frontal winds with gusts over 50 miles per hour occurred over most of the valley. Power lines and trees were blown down in the vicinity of Sacramento.							
Northwest California Coast	27	Morning			2	1	5	0	Wind
		The fishing vessel "Northstar" sank, drowning 2 fishermen in very heavy seas. A 482 foot freighter had a 4 inch hole and was taking on water. On shore, trees and power lines were blown down. 35 separate breaks in power and other utility lines occurred in Mendocino County, affecting 8000 customers.							
4 CALIFORNIA, Southern — NONE REPORTED									

STORM DATA AND UNUSUAL WEATHER PHENOMENA

NOVEMBER 1984

PLACE	DATE	TIME - LOCAL STANDARD	LENGTH OF PATH (MILES)	WIDTH OF PATH (YARDS)	NO. OF PERSONS				ESTIMATED DAMAGE		CHARACTER OF STORM
					KILLED	INJURED	PROPERTY	CROPS	PROPERTY	CROPS	
5 COLORADO											
Eastern Foothills	2	1000-1400MST			0	0	0	0	0	0	High winds Wind gusts estimated at 60 to 70 mph blew at Red Feather Lakes in Larimer County. In El Paso County, gusts reached 60 mph at Monument.
Northeast	4	afternoon			0	0	0	0	0	0	High winds Strong winds blew over most of Northeastern Colorado. The peak gusts recorded were in Logan County, where Merino recorded 72 mph while Padroni clocked winds of 62 mph.
El Paso County	9	0200MST			0	0	4	0	0	0	High winds Winds gusted to 82 mph just west of Colorado Springs. A trailer was blown off its foundation, and a fence and several trees were knocked down by the gusts.
Northern Mountains	13-14				0	0	0	0	0	0	Heavy snow A storm dumped 22 inches of snow at the Loveland and Berthoud Pass ski areas.
Southwest	24-25				0	0	0	0	0	0	Heavy snow A foot of snow fell at Wolf Creek Pass. At lower elevations, Durango received 8 inches, while 6 inches fell at Cortez.
Eastern Colorado	26				0	0	0	0	0	0	Snow, wind Snow fell across most of Eastern Colorado. The heaviest amounts of 6 to 8 inches fell in the Trinidad and Walsenburg areas, but most of the problems posed by the storm were further north. Blowing snow closed interstate 70 and several other roads, leaving over a thousand travelers stranded in Limon. Snowfall totals were mostly 2 to 4 inches on the plains and 5 to 10 inches in the mountains, but Steamboat Springs was buried with a whopping 25 inches.
Northeastern Foothills	28	morning			0	1	4	0	0	0	High winds Winds gusted at speeds of 60 to 80 mph along the Front Range foothills. In Boulder, a roof blew off of a service station; several trees were felled, damaging some cars. An elderly woman was injured when she was knocked down by a gust and blown 20 feet into some bushes.
6 CONNECTICUT — NONE REPORTED											
7 DELAWARE — NONE REPORTED											
8 FLORIDA											
Eastpoint, Franklin Co.	03	2100EST	1	30	0	0	3	-	-	-	Tornado(P1) A block wall of a commercial building was blown down. Two signs were also blown down.
St. Johns, Flagler, Volusia, Brevard, Indian River, St. Lucie, Martin, Palm Beach Counties	22-24				1	UNK	7	-	-	-	Wind, rain A low pressure system developed east of Florida and intensified to unusually low pressure. This coupled with a high pressure to the northwest produced a strong pressure gradient which led to gale force wind along the east coast. The low slowly moved north. Heavy rains of up to seven inches accompanied the storm over the south half of Florida. There was extensive coastal flooding and beach erosion with numerous structures damaged or destroyed. Fishing piers and seawalls were damaged or destroyed. Damage was confined to the seashore except where heavy rain in the south caused local flooding. A man was killed when he stepped on a downed power line.
9 GEORGIA											
Carroll and Coweta Counties	10	1715-1750EST			0	0	4	0	0	0	Wind Thunderstorm winds downed numerous trees on power lines, cars, and a few houses across both counties. Several of the houses damaged were in Newnan.
Carroll County	10	1716EST			0	0	2	0	0	0	Hail Three quarter inch hail fell briefly in Temple.
Carroll County	10	1735EST			0	0	0	0	0	0	Funnel Cloud A funnel cloud was sighted over Mount Zion.
— GEORGIA											
Carroll County	10	1800EST			0	0	3	0	0	0	Lightning Lightning struck a house in Newnan, causing considerable damage.
Cobb and Fulton Counties	10	1800-1835EST			0	0	4	0	0	0	Wind Thunderstorm winds downed trees and power lines in scattered locations across both counties. Several houses were also damaged. Winds at Dobbins AFB were measured to 58 mph with a few higher gusts.
DeKalb County	10	1810EST			0	1	5	0	0	0	Wind Thunderstorm winds caused extensive damage in the Dunwoody Park Village Apartments in northern Atlanta. Two apartment buildings had their roofs torn off and several others suffered moderate damage. Many trees were down in the area and also to the east-northeast for about a mile to near Peachtree High School. One person in the apartment complex was injured.
DeKalb County	10	1817EST			0	0	0	0	0	0	Funnel Cloud A funnel cloud was spotted near the intersection of I-85 and I-285 in northern DeKalb county.
Gwinnett County	10	1850EST	1.5	125	0	8	6	0	0	0	Tornado (F2) A tornado touched down about one mile northeast of Duluth. The tornado first hit the Forest Knoll Estates Subdivision where one house was destroyed and others damaged by falling trees. The next area hit was the Chattahoochee Mobile Home Park where ten mobile homes were destroyed and several received moderate damage. Eight people were injured in the mobile home park but only two required hospitalization. The tornado remained on the ground as it moved east-northeast to the Hilltop Manor Subdivision where it lifted. Many of the houses in this subdivision were damaged by falling trees and debris.
Gwinnett County	10	1900EST			0	0	3	0	0	0	Wind Thunderstorm winds blew a tree into a house in Lawrenceville.
Hall, Morrow, Clarke, Newton, Walton, Morgan, Jackson, and Oconee Counties	10	1900-1930EST			0	0	5	0	0	0	Wind Thunderstorm winds downed many trees, some very large, across these counties. Power line damage was extensive and in some cases trees blocked roads. A few buildings suffered damage.
Rockdale and Henry Counties	10	1930-1945EST			0	0	4	0	0	0	Wind Thunderstorm winds downed trees and power lines across both counties.
Franklin, Madison, Olgethorpe, Greene, and Banks Counties	10	1930-2000EST			0	0	5	0	0	0	Wind High winds from thunderstorms downed trees and caused some damage to buildings. In Madison county, a farm shop building was unroofed and a camper trailer overturned.
Hart and Elbert Counties	10	2000-2015EST			0	0	4	0	0	0	Wind Several trees were blown down onto power lines and roads across both counties.
Mitchell County	19	0910EST			0	0	3	0	0	0	Wind Thunderstorm winds destroyed a farm equipment shelter and caused damage at the Mitchell-Baker High School. The school suffered some roof damage and a scoreboard was blown down. A few cars were damaged as well as a school bus. A tractor company next to the school was also damaged.
10 IDAHO — NONE REPORTED											

STORM DATA AND UNUSUAL WEATHER PHENOMENA

NOVEMBER 1984

PLACE	DATE	TIME - LOCAL STANDARD	LENGTH OF PATH (MILES)	WIDTH OF PATH (YARDS)	NO. OF PERSONS		ESTIMATED DAMAGE		CHARACTER OF STORM
					KILLED	INJURED	PROPERTY	CROPS	
11 ILLINOIS									
Macon-Mt. Zion, Macon county	1	0621CST	~7	?	0	0	5	0	Tornado (F0)
									At 621am CST, a tornado touched down on the north side of Macon and traveled northeast to Mt. Zion. Several machine sheds were damaged, with a couple of outbuildings completely destroyed. Persons witnessing the tornado stated that very heavy rain and a loud roaring noise preceded it.
Central Sections	9	afternoon & evening			0	0	3	0	Hail
									A series of severe thunderstorms moved across a large section of central Illinois, in an area roughly bound by St. Louis, Champaign, and Terre Haute, during the afternoon and evening hours. One tornado (see below) accompanied the storms. Heavy rain and pea-size to marble-size hail were common. Large hail was noted at the following locations: at 240pm, 1 3/4" hail fell at Washington Park (St. Clair county); at 325pm, golf ball size hail was reported at Collinsville (Madison county); at 418pm, 3/4" hail was noted at Highland (Madison county); at 432pm, 1 1/2" hail fell at the Alton Airport (Madison county); at 642pm, 3/4" hail was reported in southwest Cumberland county near Sigel; at 705pm, 1" hail fell at Toledo (Cumberland county); at 733pm, 1" hail was noted at Charleston (Coles county).
nr Dudleyville to Brownstown, Bond and Fayette counties	9	1645CST	30	150	0	11	6	0	Tornado (F2)
									A tornado touched down in Bond county near Dudleyville at about 445pm CST. The tornado skipped to the northeast, passing just north of Hookdale, then crossed into Fayette county just east of Pleasant Mound. The tornado continued northeast, passing about 3 miles south of Vandalia, then moving through Brownstown before lifting.
									More than 175 homes were damaged by the tornado, with dollar estimates placed near \$1 million. The heaviest damage occurred in Brownstown where 169 homes were damaged, 25 of which were destroyed. Several mobile homes south of Vandalia were damaged. Eleven people were injured in Fayette County; only one was admitted to a hospital.
									At least three sightings of multiple funnels occurred with this tornado. A farmer in Pleasant Mound township spotted five different funnel clouds "spittin' up and down". Three funnel clouds, "traveling in a single line", were described by two residents of Pleasant Mound. The Fayette county ESDA coordinator spotted several funnels cutting a path through trees south of Vandalia.
Northeast	9	late afternoon			0	0	3	0	Hail, Wind
									A second area of severe thunderstorms occurred in Illinois during the late afternoon and early evening hours, this one covering the northeast quarter of the state.
									Severe weather/damage reports included: one inch hail at Lowell, La Salle county, at 400pm CST; 3/4 inch hail at Channahon, Will county, at 543pm CST; and wind damages to power lines near SR 83 and I-55, Du Page county, at 555pm CST. A tornado occurred at Manhattan during these storms (see below). The storms also produced heavy rains and small hail.
1 N Manhattan, Will county	9	1840CST	Short Narrow	0	0	4	0	0	Tornado (F1)
									A small tornado caused damage at a sod and vegetable farm about a mile north of Manhattan, Will county, at 640pm CST. Three small houses used by migrant workers were destroyed. The houses were unoccupied.
Carbondale Airport, Jackson county	9	1800CST	Short Narrow	0	0	0	0	0	Tornado (F0)
									At 600pm CST, a small tornado was sighted by persons in the tower at the Carbondale Airport.
Cora, Jackson county	9	2147CST	Short Narrow	0	0	0	0	0	Tornado (F0)
									A small tornado was sighted by ESDA officials at Cora, Jackson county, at 947pm CST.
Decatur, Macon County	10	1156CST	?	?	0	0	4	0	Tornado (F1)
									A tornado touched down at 1156am CST on the north side of Decatur. The northwest corner of a concrete-block building collapsed outward as the tornado first began its damage. The tornado traveled north to a mobile home park where it did minimal damage. It continued to a car dealership where about it blew out windows and damaged about 18 trucks.
nr Maroa, Macon county	10	1253CST			0	0	2	0	Wind
									A large tree was blown over a house 2 miles west and one quarter mile north of Maroa in extreme northern Macon county. No one was home at the time.

PLACE	DATE	TIME - LOCAL STANDARD	LENGTH OF PATH (MILES)	WIDTH OF PATH (YARDS)	NO. OF PERSONS		ESTIMATED DAMAGE		CHARACTER OF STORM
					KILLED	INJURED	PROPERTY	CROPS	
12 INDIANA									
N. Yedman, Carroll County	01	0834EST			0	0	2	0	Thunderstorm Winds
									A large tree was blown onto a house by strong storm winds.
Stockwell, Tippecanoe County	01	0914EST			0	0	2	0	Thunderstorm Winds
									Strong thunderstorm winds uprooted a few trees.
2 S Peru, Miami County	01	0940EST			0	0	3	0	Thunderstorm Winds
									Strong thunderstorm winds uprooted some trees and caused some damage to sheds. One house lost a section of its roof.
Ossian, Wells County	01	1115EST			0	0	5	0	Thunderstorm Winds
									Downburst winds did an estimated 60,000 dollars in damage to a residence 3 miles east of Ossian on 900 north. In addition, several nearby trees were damaged and an old barn was moved on its foundation.
Clinton, Vermillion County	09	2100EST			0	0	0	0	Hail
									3/4 inch diameter hail was reported.
Shepherdsville, Vigo County	09	2105EST			0	0	0	0	Hail
									3/4 inch diameter hail was reported near the town of Shepherdsville.
13 IOWA									
Marion County	09	0730 CST			0	0	4	3	Thunderstorm with Hail
									Large hail fell in a thunderstorm in the vicinities of Columbia, Harvey and Attica. The hail was the size of tennis balls around Columbia, and broke residential windows, damaged steel roofs and put dents in cars and trucks. Crop damage was light because most of these had been harvested.
Iowa County	09	1145 CST			0	0	5	0	Lightning
									Lightning struck a house west of Williamsburg, starting a fire that burned it to the ground. Nothing was salvaged.
Northeast Iowa	09-	Night 10 Afternoon			0	0	4	0	Snow
									An early snowstorm produced a band of snow about 20 miles wide, from around Hampton, northeast to north of Cresco. One to six inches of heavy, wet snow fell; some minor power outages resulted.
14 KANSAS									
Winfield, Cowley County	01	0200CST			0	0	4	0	Wind
									Thunderstorm winds blew over signs, uprooted a few trees and downed power lines at Winfield.
15 KENTUCKY									
Webster, Union, Hopkins, McLean, and Graves Counties	01	1400-1700 CST			0	0	4	4	Flash Flooding
									Very heavy showers accompanied strong thunderstorms across the lower Ohio Valley during the early afternoon, causing flash flooding. Rainfall measurements ranged from 2 to 4 inches. Several county roads and city streets were impassable due to the high water. Small streams overflowed. Many basements were flooded when storm sewers could not handle the excessive amounts of rain. Hardest hit were the towns of Morganfield in Union County and Mayfield in Graves County.
Fulton County	01	AFTN			0	0	3	0	Thunderstorm Winds
									Very strong thunderstorm winds toppled several trees and utility poles in Riceville. A fallen tree limb damaged a mobile home. A feed box was blown 135 feet into a pickup truck.
Nelson County	09	1200 EST			0	0	4	0	Lightning
									Two bolts of lightning caused damage to three adjacent homes in Bloomfield. Lights, fuses, a transformer, and a television set were all knocked out. Smoke from smoldering papers also caused some damage to one of the homes.

STORM DATA AND UNUSUAL WEATHER PHENOMENA

NOVEMBER 1984

PLACE	DATE	TIME - LOCAL STANDARD	LENGTH OF PATH (MILES)	WIDTH OF PATH (YARDS)	NO. OF PERSONS		ESTIMATED DAMAGE		CHARACTER OF STORM
					KILLED	INJURED	PROPERTY	CROPS	
16 KENTUCKY									
Clinton County	10	1600CST		0	0	3	0		Lightning
									Minor floor damage was reported after lightning struck and caused a fire to a home a mile west of Albany.
Henderson County	13	0600-0800 CST		0	9	5	0		Fog/Ice
									Fog shrouded and ice covered twin bridges over the Ohio River as the city of Henderson became the site of two rush hour pileups. 25 vehicles were involved on the northbound side while 19 more collided on the southbound side. Nine injuries resulted. Three were admitted to the hospital, one critically injured.
16 LOUISIANA									
Caddo and Bossier Parishes	09	1730CST							SVR TSTM A severe thunderstorm produced hail .75 to 1.5 inch in diameter at both Shreveport and Bossier City.
Morehouse Parish	10	0730CST	2	100		5	4		Tornado (F2) A tornado struck the town of Oak Ridge. Several homes were either severely damaged or destroyed. 5 persons received minor injuries.
Plaquemines Parish	30	1115CST					4		High Winds High winds damaged several buildings and flipped a large trailer in Belle Chase.
17 MAINE ————— NONE REPORTED									
18 MARYLAND and D.C.									
Garrett county	18	1000-19 0800 EST			0	0	3	0	Heavy Snow
									A winter storm developed in East Texas, took a course into Northern Alabama and then moved to North Carolina. The snow which began Sunday morning accumulated to eight inches at Oakland and Keyser's Ridge by Monday morning. In the high elevations of far Western Maryland, accumulations of 6 to 10 inches were common with sharply lesser amounts from Cumberland east. A number of minor accidents occurred Sunday. Volunteer fire companies responded to calls and local utilities reported a number of problems due to the snow and freezing conditions.
Prince George's and Frederick counties	28	2115-29 0200 EST			0	0	5	0	High Winds
									A low pressure center developed after a cold front passed through central Maryland early Wednesday night. About 10:30 PM wind gusts estimated at 75 mph or higher damaged 14 small single-engine planes at Hyde Field in Clinton MD. Some of the planes were total losses. Damage was sporadic, extending less than a mile in length and 50 yards in width. Later that night, high winds were recorded up to 60 mph at the Frederick Municipal Airport. Trees were downed on nearby county roads and there were scattered power outages overnight. Minor damage was reported.
19 MASSACHUSETTS ————— NONE REPORTED									
20 MICHIGAN									
Highland Township, Oakland County	10	1745EST					5		Lightning
									A barn and its contents burned in a fire started by lightning.
21 MINNESOTA ————— NONE REPORTED									
22 MISSISSIPPI									
Lauderdale County	10	1240CST			0	0	4	0	High Wind
									Strong thunderstorm winds destroyed a television tower, and blew down ten large trees five miles south of Meridian.
Laurel	10	1300CST			0	1	0	0	Lightning
									A 12 year old Laurel boy was struck by lightning while on a bicycle in his front yard. He was still in a coma a month later.
23 MISSOURI									
St. Louis and County	01	0554CST			0	0	2	0	Damaging Wind
									Wind to 56 knots (64 mph) was reported at the National Weather Service Observation station at Lambert Field. Some minor damage to trees in the area was reported.
St. Louis County	01	0640CST			0	0	3	0	Damaging Wind
									A number of trees were downed in Concord Village in south St. Louis County.
St. Louis County	01	0646CST			0	0	3	0	Damaging Wind
									Windows were blown out of one home and several trees were downed in south St. Louis County.
St. Louis County	01	0650-0700CST			0	0	3	0	Damaging Wind
									Trees were blown down and minor damage was reported in the south portion of St. Louis County near Grants Farm.
Barry County	01	0935CST			0	0	4	0	Damaging Wind
									Wind damaged trees and a barn was blown down 12 miles southwest of Monett or 4 1/2 miles northeast of Wheaton.
Stone County	01	1015CST			0	0	4	0	Damaging Wind
									Trees and power lines were downed by high winds at Reed Spring.
Stone County	01	1030CST			0	0	5	0	Damaging Wind
									Trees and power lines were downed and some buildings were lightly damaged at Spokane.
Oregon County	01	1230CST			0	0	2	0	Damaging Wind
									Wind downed trees along Route 160 between Alton and Riverton.
Butler County	01	1320-1340CST			0	0	5	0	Damaging Wind
									Wind downed trees and power lines and produced some damage to a few cars and a carport around Poplar Bluff. The wind was estimated at greater than 60 mph.
Dunklin County	01	1350CST			0	2	6	0	Damaging Wind
									An extremely strong wind exceeding 100 mph (probably a downburst if not a tornado) produced substantial damage in Malden. Two aircraft were totally destroyed, five were severely damaged and a number of mobile homes were damaged or destroyed. The airport building, houses and hangars were damaged around the airport. Some damage to the business and residential area of downtown Malden was reported. Trees and power lines were also downed. A lumber company warehouse was also completely destroyed. There were reports of funnel clouds at different locations and with different characteristics. Local officials identified the damage as probably being caused by extremely strong straight line winds.
Dunklin County	01	1400-1415CST			0	0	3	0	Damaging Wind
									Trees were downed around Kennett and some minor damage was reported around Senath and Hornersville.
Stoddard County	01	1405CST			0	0	4	0	Damaging Wind
									Damage, including a destroyed barn, was reported at Bell City.
Scott County	01	1415CST			0	0	4	0	Damaging Wind
									Minor damage occurred in and around Sikeston. Two sheds were destroyed, a large tree uprooted, and a roof was blown off a mobile home.
New Madrid County	01	1425CST			0	0	3	0	Damaging Wind
									Trees and power lines were downed in and around New Madrid.
St. Louis County	09	1419CST			0	0	0	0	Large Hail
									Hail up to 3/4 inch in diameter fell south of Fenton.

STORM DATA AND UNUSUAL WEATHER PHENOMENA

NOVEMBER 1984

PLACE	DATE	TIME - LOCAL STANDARD	LENGTH OF PATH (MILES)	WIDTH OF PATH (YARDS)	NO. OF PERSONS		ESTIMATED DAMAGE		CHARACTER OF STORM
					KILLED	INJURED	PROPERTY	CROPS	
St. Louis County	09	1423CST			0	0	?	0	Large Hail
									1 1/2 inch to 2 1/2 inch diameter hail fell in southern St. Louis County.
St. Louis County	09	1425CST			0	0	?	0	Large Hail
									Hail up to 1 1/2 inches in diameter fell at several locations in the county.
St. Louis City	09	1425CST			0	0	?	0	Large Hail
									Hail up to 1 1/2 inches in diameter fell in southern St. Louis.
St. Louis County	09	1426CST			0	0	0	0	Large Hail
									Hail up to 3/4 inch in diameter fell at Interstate 55 and Lindbergh in southern St. Louis County.
Iron County	09	1435CST			0	0	?	0	Large Hail
									Hail up to 1 1/2 inches in diameter fell between Bixby and Banner.
St. Louis County	09	1507CST			0	0	?	0	Large Hail
									Hail up to 1 1/2 inches in diameter fell at Black Jack.
Shannon County	09	1515CST	1/2	100	0	0	4	0	Tornado (F1)
									A tornado touched down eight miles east of Eminence, downing trees and taking off a tin roof.
St. Louis County	09	1522CST			0	0	0	0	Large Hail
									Hail up to 1 inch in diameter fell in Shrewsbury.
St. Louis City	09	1532CST			0	0	0	0	Large Hail
									Hail up to 3/4 inch in diameter fell at St. Louis University in Midtown.
St. Genevieve County	09	1600CST	1/2	100	0	0	3	0	Tornado (F1)
									A tornado knocked over a building in Weingarten.
Wayne County	09	1605CST	8	100	0	0	3	0	Tornado (F1)
									A tornado touched down a couple of times between just west of Piedmont to 7 miles north of Piedmont. Some trees were damaged and a windshield was blown out of a car.
Wayne County	09	1630-1645CST	1	100	0	0	4	0	Tornado (F1)
									A tornado touched down at Silva and damaged a roof and several mobile homes.
St. Louis County	09	1700CST			0	0	?	0	Large Hail
									Hail up to 2 1/2 inches in diameter fell at the intersection of US Highway 40 and State Highway 141.
Jefferson County	09	1710CST	1/4	75	0	0	0	0	Tornado (F0)
									A tornado touched down briefly between House Springs and Cedar Hill.
Cape Girardeau County	09	1710CST			0	0	0	0	Large Hail
									Hail up to 1 inch in diameter fell in the northwest portion of the county.
St. Louis County	09	1716CST			0	0	0	0	Large Hail
									Hail up to 1 1/2 inches in diameter fell at Maryland Heights.
Ripley County	09	1720CST			0	0	0	0	Large Hail
									Hail up to 1 1/2 inches in diameter was reported near Doniphan.
St. Louis County	09	1721CST			0	0	0	0	Large Hail
									Hail up to 1 1/2 inches in diameter fell in Florissant.
Cape Girardeau County	09	1723CST			0	0	?	0	Large Hail
									Hail up to 1 1/2 inches in diameter covered the ground near Millersville.
Jefferson County	09	1724CST			0	0	0	0	Large Hail
									Hail up to 3/4 inch in diameter was reported.
Cape Girardeau County	09	1730CST			0	0	?	0	Large Hail
									Hail up to 1 1/2 inches in diameter fell at Oak Ridge.

PLACE	DATE	TIME - LOCAL STANDARD	LENGTH OF PATH (MILES)	WIDTH OF PATH (YARDS)	NO. OF PERSONS		ESTIMATED DAMAGE		CHARACTER OF STORM
					KILLED	INJURED	PROPERTY	CROPS	
Cape Girardeau County	09	1732CST	1	100	0	0	4	0	Tornado (F1)
									A tornado touched down 1 1/2 miles south of Oak Ridge, which is 20 miles northwest of Cape Girardeau. Some damage to trees and a couple of buildings was reported.
Ripley County	09	1740CST	1/4	75	0	0	0	0	Tornado (F0)
									A tornado touched down briefly 7 miles west-northwest of Doniphan on Highway 160 and produced no damage.
Ripley County	09	1805CST	1	100	0	0	5	0	Tornado (F1)
									A tornado touched down 1 mile north of Doniphan and downed trees and power lines. A trailer was demolished by a falling tree. Some people were trapped in a car due to a downed power line.
Washington County	09	1815CST	3	400	1	15	7	0	Tornado (F2)
									A tornado touched down just to the south-southeast side of Potosi at the intersection of Highways 8 and 21 (a little southwest of this point) and produced considerable damage. A mobile home sales lot received substantial damage. A shopping center, hospital and elementary school were also damaged. An A-frame house was hit as two people were trying to escape to the basement. They were not able to get to the basement in time and a woman was killed while the man received serious injuries. One or two other homes were damaged in the area. As the storm continued, it produced substantial damage at a small industrial park. The one person inside of an egg processing plant in the park took refuge under a desk and was not injured. The tornado lifted about 3 miles northeast of the original touchdown site.
St. Genevieve County	09	2000CST (time uncertain)	0	1	3	0			Damaging Wind
									Minor damage and injury occurred around County Road AA and State Highway 32.
Texas County	09	2000-2030CST			0	0	0	0	Large Hail
									Hail up to 3/4 inch in diameter fell 6 miles south of Mountain Grove.
Jefferson County	09	2004CST			0	0	?	0	Large Hail
									Hail up to 1 1/2 inches in diameter fell at DeSoto.
Ozark County	09	2100CST			0	0	0	0	Large Hail
									Hail up to 1 inch in diameter fell at Briley, or about 20 miles north of Gainesville.
Perry County	09	2157CST			0	0	0	0	High Wind
									The County Sheriff reported high winds across the county.
24 MONTANA									
Nine county area of Southern Montana from Powell and Beaverhead Counties to Stillwater and Carbon Counties.	02	Late night- Early afternoon			-	3	6	0	High Winds
									Falling pressures in advance of a Pacific weather system resulted in a strong north-south pressure gradient as a surface low formed along the Canadian border. Winds of 40 to 60 mph, with gusts to 75 and 100 mph, unroofed buildings at Red Lodge and Livingston, overturned an empty cattle truck on Bearcreek Hill (near Red Lodge), damaged two helicopters at the Red Lodge Airport, and downed many trees and power lines from Red Lodge to Anaconda. The driver of the cattle truck and two men who were blown off a roof as they attempted to nail it down were injured slightly.
25 NEBRASKA									
Panhandle of Nebraska	03	1000CST -1700CST			0	0	2	3	High Winds
									Strong northwest winds buffeted the panhandle region with some damage reported to crops. A peak gust of 56 m.p.h. was recorded at Scottsbluff.
Northern Panhandle and North Central Nebraska	09	Daytime -Evening			0	0	0	0	Heavy Snow
									Heavy snow fell north of a line from Harrison to Broken Bow to Butte with snowfall in excess of 4 inches. A band of heavier snow fell in an area about 20 miles from 25 miles north of Whitman to 20 miles north of Theford, where sandhill ranchers reported 10 to 16 inches. Twenty-five to 35 m.p.h. winds caused some drifting.

STORM DATA AND UNUSUAL WEATHER PHENOMENA

NOVEMBER 1984

PLACE	DATE	TIME - LOCAL STANDARD	LENGTH OF PATH (MILES)	WIDTH OF PATH (YARDS)	NO. OF PERSONS		ESTIMATED ¹ DAMAGE		CHARACTER OF STORM
					KILLED	INJURED	PROPERTY	CROPS	
26 NEVADA	NONE REPORTED								
27 NEW HAMPSHIRE	NONE REPORTED								
28 NEW JERSEY	NONE REPORTED								
29 NEW MEXICO	NONE REPORTED								
30 NEW YORK, Coastal	NONE REPORTED								
30 NEW YORK, Central	NONE REPORTED								
30 NEW YORK, Western	NONE REPORTED								
Many parts of Western New York	12-13						4		Snow
	The first snow cover of the season fell and caused slippery road conditions. There were many vehicular accidents, many resulting in dented cars. A few motorists were reportedly injured.								
Lakewood, Chautauqua County	14 Evening						3		Lightning
	Lightning struck a two-family house. It blasted a two-foot hole in the roof and knocked down the kitchen ceiling.								
31 NORTH CAROLINA	NONE REPORTED								
32 NORTH DAKOTA	NONE REPORTED								
North Central and Northwest	14 Evening								High Winds
	Strong winds (gusts to 58 mph at Minot AFB) occurred with light snow and blowing snow. No damage was reported.								
North Central	25 Afternoon and to 26 Afternoon								Winter Storm
	A winter storm with heavy snow (7 inches at Upham in McHenry County, 6 inches at Bowbells in Burke County and 6 inches at Tagus in Mountrail County) and freezing rain created very hazardous driving conditions. Because of icy and snow covered roads, many vehicles went off the road into ditches. One lady died in a car crash 14 miles northwest of Minot (Ward County) when her car skidded into another vehicle.								
33 OHIO	NONE REPORTED								
Lake, Geauga and Ashtabula Counties	12 DAY								Heavy Snow
	Four to six inches of snow fell in southern Lake, Southern Ashtabula and Geauga Counties. This Lake Effect snow caused travel difficulties.								
34 OKLAHOMA	NONE REPORTED								
Nowata, Nowata County	01 0030CST						3		Wind
	Strong winds uprooted a tree, shifted a mobile home off of its foundation, and destroyed a satellite dish just southeast of Nowata. Damage was estimated at \$3,500.								
Lawton, Comanche County	01 0615CST						4		Wind
	Strong winds damaged 15,000 square feet of a junior high school building. Damage was estimated at \$25,000.								

PLACE	DATE	TIME - LOCAL STANDARD	LENGTH OF PATH (MILES)	WIDTH OF PATH (YARDS)	NO. OF PERSONS		ESTIMATED ¹ DAMAGE		CHARACTER OF STORM
					KILLED	INJURED	PROPERTY	CROPS	
OKLAHOMA									
Paula Valley, Garvin County	01 0715CST						4		Wind
	Strong winds destroyed a mobile home 4 miles northeast of Paula Valley. Two people were inside the mobile home, but were uninjured. Damage set at \$25,000.								
Bowlegs, Seminole County	01 0810CST	Short Narrow					3		Tornado (F1)
	A tornado touched down briefly, heavily damaging a barn. Damage estimated at \$5,000.								
Wewoka, Seminole County	01 0815CST						4		Wind
	Strong winds destroyed a barn just north of Wewoka. Damage estimated at \$25,000.								
Ardmore, Carter County	01 0830CST						4		Wind
	Winds clocked at 68 mph occurred at the Ardmore airport, damaging many roofs and destroying a mobile home. Damage estimated at \$40,000.								
McAlester, Pittsburg County	01 0900CST						4		Wind
	Strong winds struck the Army Ammunition Depot near McAlester, damaging the roofs on six buildings. Damage was estimated at \$10,000.								
Pocola, LeFlore County	01 1058CST						5		Wind
	Strong winds destroyed or heavily damaged 4 mobile homes in a sales lot. The mobile homes were just sitting on cement blocks. Damage estimated at \$55,000.								
35 OREGON	NONE REPORTED								
Statewide	1-2						6	4	Wind, Heavy Rain, Freezing Rain
	Heavy rain fell over much of western Oregon with 24 hour accumulations as much as 5.3 inches along the Coastal Range. Many areas in the Willamette Valley reported amounts between 2 and 3 1/2 inches resulting in some minor urban flooding. Some freezing rain in the Columbia Gorge area caused several minor traffic accidents and local orchard damage. Strong winds (30 to 50 mph) whipped through much of the state. Strongest winds were reported along the coastal strip and southern valleys with a peak gust of 94 mph at Cape Blanco. Wind-fallen trees and power lines caused several power outages across the state and also blocked several roads. Numerous buildings fell victim to the strong winds with various damage reports statewide.								
Waldport, Lincoln County	2 1700PST	?	?				0	5	0 Tornado (F1)
	A small tornado touched down briefly near Waldport, ripping several portions of the roof off a 90 room motel, damaging several cars in a nearby parking lot, and overturning a recreational vehicle.								
Northeast Oregon	25								Snow
	Snow showers and icy roads resulted in numerous minor traffic accidents.								
Northeast Mountains	26-27						3	?	5 0 Heavy Snow, Strong Winds
	Heavy snow in the northeast mountains along with strong winds (50 to 70 mph) caused numerous problems. Freezing rain followed by snow amounts in excess of a foot stranded more than 100 elk hunters in the northeast Oregon mountains. Along with winds gusts in excess of 70 mph, snow and fallen trees clogged most roads including Interstate 84 east of Pendleton for several hours. Many of those hunters were stranded for more than 3 days. Three persons died due to weather related accidents. Winds also caused power outages in the Heppner area for about an hour.								
Western Oregon	26						0	0	4 ? Heavy Rain, Strong Wind
	Heavy rain and strong wind whipped through western sections of the state. Rain amounts of 1 to 2 inches were reported in many locations, with 3 inches falling at Laurel Mountain near the Oregon coast. Winds in excess of 60 mph were reported along the south coast. A Gold Beach officer reported an 80 mph gust which pushed a U-haul trailer from a gas station onto Highway 101. Strong winds (40 to 50 mph) hit the southern Willamette Valley and Klamath Basin. Downed trees and power lines left many locations without power for generally less than an hour.								
Oregon Cascades	30						0	0	4 0 Heavy Snow
	Nearly 2 feet of snow fell on the Oregon Cascades, causing numerous traffic accidents and a snow slide.								

STORM DATA AND UNUSUAL WEATHER PHENOMENA

NOVEMBER 1984

PLACE	DATE	TIME - LOCAL STANDARD	LENGTH OF PATH (MILES)	WIDTH OF PATH (YARDS)	NO. OF PERSONS		ESTIMATED DAMAGE		CHARACTER OF STORM
					KILLED	INJURED	PROPERTY	CROPS	

PLACE	DATE	TIME - LOCAL STANDARD	LENGTH OF PATH (MILES)	WIDTH OF PATH (YARDS)	NO. OF PERSONS		ESTIMATED DAMAGE		CHARACTER OF STORM
					KILLED	INJURED	PROPERTY	CROPS	

36 **PENNSYLVANIA, Eastern** - NONE REPORTED

36 **PENNSYLVANIA, Western** - NONE REPORTED

37 **RHODE ISLAND** - NONE REPORTED

38 SOUTH CAROLINA

Oconee, Anderson, Abbeville, Greenville and Laurens Counties 10 1905-1950EST 0 0 3 0 High Wind
Thunderstorms with gusts to 45 mph moved through northwestern South Carolina. High winds broke many limbs, interrupted power and caused considerable, but mostly minor damage.

South Carolina Coast 22-Dec 4 0 0 5 0 High Winds and Tides, Tidal Flooding
A high pressure ridge along the east coast together with a weather disturbance off the northeast Florida Coast caused strong onshore winds along the South Carolina Coast. Tides up to 7.9 feet mean low water on November 23, 1984 caused significant beach erosion, especially south of Charleston. Considerable tidal flooding was reported with water "knee-deep" on some Charleston streets. Erosion at Folly Beach was said to be heavy.

39 SOUTH DAKOTA

Lawrence & Pennington Counties 02 Evening - - 0 0 0 0 Wind
Gusty winds in Rapid City (Pennington County) and north of Rapid City in the Black Hills knocked two TV stations off the air and caused several power outages of up to three hours.

Black Hills 08-09 Late PM - - 0 0 0 0 Snow Morning
Two to ten inches of snow fell in the Black Hills with heaviest amounts in the north and central Black Hills. Several minor accidents were reported.

Northwest & Central South Dakota 14 Early PM - - 0 0 0 0 Wind
Strong winds with gusts to 60 mph were reported from Redig (Harding County) to Lemmon (Perkins County) to Philip (Haakon County) to Pierre (Hughes County).

Western Third of State 25-26 Evening - - 0 0 0 0 Snow Evening
Snowfall amounts of a trace to twelve inches were reported in western sections. Heaviest amounts fell in the northern Black Hills. Gusty winds up to 60 mph created drifting problems and forced the closure of roads in the Lead/Deadwood (Lawrence County) area. Numerous cancellations occurred around Mission (Todd County) due to snow, winds and low visibilities.

40 TENNESSEE

Osage, Henry County 1 1556 cst 0.5 25 0 0 0 2 Tornado (F0)
A small tornado touched down near Osage in the northwest part of Henry County, knocking down some trees and blowing a boat off its trailer.

Jellico, Campbell County 5 ? 1 Lightning
A 42-year-old Jellico man was killed when lightning struck as he worked at a strip mine. The man was driving an end loader at the time of the accident.

Memphis, Shelby County 9 2158 cst Hail
Half inch hail was reported by amateur radio storm spotters in east Memphis. Heavy rains also produced local street flooding on the south side of Memphis.

Memphis, Shelby County 10 0119 cst 4 Wind
Strong wind with a thunderstorm produced a wind gust to 41 miles an hour at the Memphis International Airport. Strong winds in north Memphis blew down a church steeple and downed some trees and tree limbs.

Near Gallatin, Sumner County 10 1430 cst 0.5 40 0 3 4 4 Tornado (F1)
A small tornado struck on the Flynn farm destroying two barns, ripping a porch from a farm house and blowing out most of the farm house windows. Three people stripping tobacco in one of the barns received injuries in the tornado. About 10,000 pounds of tobacco were also lost in the storm in addition to the buildings.

TENNESSEE

Nashville, Davidson County 27 1030 cst 4 Wind
Strong wind caused roof damage to an east Nashville nursing home, forcing the evacuation of the residents. Rain poured into the home after the roof was damaged by strong wind. The National Weather Service recorded wind to 48 miles an hour at Berry Field in southeast Nashville. Power lines and trees were also damaged in scattered spots in and around Nashville.

41 TEXAS, Northern

Dallas County 1 1200CST 0 0 4 ? Thunderstorm Winds
Thunderstorm winds produced roof and wall damage to a church in Seagoville. A nearby nursing home also sustained some roof damage during the incident. There were no injuries.

Nacogdoches County 9 1820CST 0 0 4 ? Thunderstorm Winds
A home and several chicken houses sustained wind damage during a thunderstorm in the Union Springs area.

Hill County 26 1500CST 0 0 ? ? Hail
Golfball size hail was reported in the extreme southern part of the county.

41 **TEXAS, Southern** - NONE REPORTED

41 **TEXAS, Western** - NONE REPORTED

42 UTAH

Salt Lake County 08 1500MST 0 0 1 0 Thunderstorm Downburst Winds
An isolated thunderstorm downburst picked up a trampoline and carried it 5 houses away and did some minor damage in the city of Sandy. A fence was damaged and mud was splattered against the side of a house in addition to a few shingles being torn off a roof. The damage was confined to a small area.

Beaver, Cache, Iron, and Tooele Counties 13 0715 to 1500MST 0 0 1 0 High Winds
High winds in advance of a cold front blasted across much of western Utah on this Tuesday. Gusts of 62 mph were reported in Cedar City and in Cache County. Tooele received winds to 59 mph. Lakeside and Wendover reached 49 mph and Milford 48 mph.

Salt Lake County 26 Ended at 0600 MST 0 0 1 0 Heavy Snow
A dramatic demonstration of Lake Effect snowfall occurred between 1800 MST Sunday evening the 25th and 0600 MST Monday the 26th. Western portions of the Salt Lake Valley received up to 20 inches of snow overnight. Spotters in the South Jordan and Copper city areas reported 20 inches of snow with numerous reports of 15 to 20 inches in surrounding areas. Eastern parts of the valley received only a couple of inches of snow.

43 **VERMONT** - NONE REPORTED

44 **VIRGINIA** - NONE REPORTED

STORM DATA AND UNUSUAL WEATHER PHENOMENA

NOVEMBER 1984

PLACE	DATE	TIME - LOCAL STANDARD	LENGTH OF PATH (MILES)	WIDTH OF PATH (YARDS)	NO. OF PERSONS		ESTIMATED ¹ DAMAGE		CHARACTER OF STORM
					KILLED	INJURED	PROPERTY	CROPS	
45 WASHINGTON									
Toutle Lake, Cowlitz County	2	1430 PST			0	0	4	0	Thunderstorm, Wind
A thunderstorm created damaging winds around the Toutle Lake Elementary and High School Campus. Winds that were estimated to be 80 mph peeled almost half the roof off the football stadium. The press box also collapsed because of the winds. Some structural damage to the school buildings included air vents and antennas ripped from the roof.									
Tacoma, Pierce County	3	1527 PST			0	0	4	0	Lightning
A bolt of lightning struck a shortwave radio antenna that was affixed to the top of a fir tree in a yard. The lightning travelled down the wire to the residence and blew a hole in the wall and knocked off the walls siding. The blast blew open doors and cupboards and covered the inside with debris.									
Tacoma, Pierce County	3	1533 PST			0	0	4	0	Lightning
The same thunderstorm as above caused another lightning bolt to hit another home. The electrical system was blown out but damage, although substantial, was of a lesser degree than the incident above.									
Kitsep Peninsula, Kitsep County	27	morning			0	?	0	0	Snow
Up to 6 inches of snow fell at the Navy Submarine Base at Bangor. The snow was limited to the Peninsula, located along the Eastern foothills of the Olympic Mountains.									
Eastern Washington	27	all day			0	?	0	0	Snow
An occluded Pacific Storm moved across Washington and dropped the first significant snowfalls of the season east of the Cascade Mountains. The 12-inch total at Yakima was their 4th largest for 24 hours. The wide area of snowfall was generally of 7 to 10 inches and only the extreme southeast corner of the state was spared the snow. Winds reached as high as 50 mph close to the front itself. Schools were closed and traffic accidents were common.									
46 WEST VIRGINIA ————— NONE REPORTED									
47 WISCONSIN ————— NONE REPORTED									
48 WYOMING									
Park County	02	0915MST			0	0	5	0	High Wind
Winds gusting to 92 mph moved through Cody in Park County. The winds tipped two helicopters over on their sides. Damage also occurred to signs, vehicles, roofs, power lines and poles. Winds estimated to 105 mph ripped part of a roof off of a school at Clark.									
Fremont County	02	1407MST			0	0	5	3	High Wind
A wind storm along the east slopes of the Wind River Mountains near Lander in Fremont County produced gusts to 71 mph at the Lander Airport. Gusts to 100 mph were estimated on the ridge west of Lander. Fire fanned by the winds destroyed a house and two vehicles. A couple of mobile homes, trailers, ten tons hay and farm sheds were destroyed. Other minor damage occurred. At Red Canyon where a mobile home was destroyed, wind damage was capricious and tornado-like.									
Buffalo, Johnson County	02	1445MST			0	0	4	0	High Wind
Two trailer homes at Buffalo were severely damaged. Other window, roof, shed, power line and tree damage occurred. No estimate of the wind strength was made.									
Southeast Wyoming	02	During Day			0	0	7	0	High Wind
Wind gusts to 55 mph were logged at Rawlins and Arlington in Carbon County, and at Casper in Natrona County.									
Lyman, Uinta County	02	Evening			0	0	3	0	High Wind
Winds of unknown strength blew the roof off of a trailer home at Lyman.									
Crook County	25	During Day			0	0	0	0	Snow
Up to six inches of snow was reported near Sundance in Crook County.									
Sweetwater County	25	During Day			0	0	0	0	Snow
About six inches of snow fell in the Rock Springs-Green River area in Sweetwater County.									

PLACE	DATE	TIME - LOCAL STANDARD	LENGTH OF PATH (MILES)	WIDTH OF PATH (YARDS)	NO. OF PERSONS		ESTIMATED ¹ DAMAGE		CHARACTER OF STORM
					KILLED	INJURED	PROPERTY	CROPS	
WYOMING									
Carbon County	26	During Day			1	1	4	0	Snow
Eight inches of snow was reported on Beaver Creek, 10 miles south of Encampment in Carbon County. Five and a half inches of snow was logged at nearby Saratoga. One man was killed and one injured when the fatality's car slid broadside into oncoming traffic south of Laramie.									
49 ALASKA, Northern									
St. Lawrence Island, Norton Sound, Kotzebue Sound, Arctic Coast	11-16				0	0	?	0	High Wind
A large low pressure system entered the western Bering Sea on the afternoon of Nov. 12. On the morning of Nov. 14, a breakoff low moved northwest into Bristol Bay. Meantime, strong high pressure remained centered about 500 miles north of Barrow. The pressure gradient strengthened over Arctic and Northwest Alaska during this 3-day period. Pt. Lay had winds to 40 knots and chill factor to -75°F on the 14th and morning of the 15th; Unalakleet had winds to 36 knots and chill factor to -45°F on the morning of the 13th; Kotzebue had winds gusting to 49 knots and chill factor to -45°F on the morning of the 14th; Unalikeet's wind increased again, to 35 knots with gusts to 43 knots, with chill factor to -35°F on the morning of Nov. 15; Barter Island had steady wind to 34 knots with gusts to 40 knots and chill factor to -65°F on the morning of Nov. 16. The strongest winds for the whole storm were on St. Lawrence Island on the 11th through the 13th, where winds were over 40 knots. The peak winds on St. Lawrence were on the evening of the 11th, at 62 knots.									
49 ALASKA, Southern ————— NO REPORT RECEIVED									
49 ALASKA, Southeastern									
Juneau	21						5		High Winds
An intense low pressure system, spawned by a major storm in the Eastern Bering Sea, moved northward along the outside coast of Southeast Alaska bringing strong gusty winds to the Juneau area. Falling trees cut one of the area's major power lines, causing a major power outage. A building under construction collapsed and a trailer was blown off its foundation by winds clocked at 61 mph at the Juneau International Airport.									
All Southeast Alaska	22				2		7		High Winds/Storm Surge
The winds of the 21st were only a prelude to the Big Blow of Thanksgiving in Southeast Alaska. A second intense low, also spawned by the Bering Sea Storm, crossed Southeast Alaska at the same time as waters associated with predicted, unusually high tides were flowing. Winds approaching 100 mph, tides 2 to 3 feet above normal, and waves of from 4 to 10 feet struck throughout the region, damaging or destroying buildings, docks, and roads; sinking numerous pleasure and fishing boats; damaging about a dozen small airplanes; and causing 2 injuries - a broken ankle and a concussion. The towns of Juneau, Sitka, Kake, Moonah, Tenakee and Angoon were hardest hit, with Juneau sustaining damage of almost \$2.5 million by itself.									
50 HAWAII									
Hawaii Island	3-4	night			0	0	5	0	Flash Flooding
Intense thunderstorm rains that fell mostly during the evening hours dropped 4 to 6 inches of rain in a relatively short period over much of the Hilo and Puna districts, causing mostly minor flooding and some power failures. One major casualty of the storm was the collapse of the roof of a variety store in a shopping center near Hilo.									

STORM DATA AND UNUSUAL WEATHER PHENOMENA

NOVEMBER 1984

PLACE	DATE	TIME - LOCAL STANDARD	LENGTH OF PATH (MILES)	WIDTH OF PATH (YARDS)	NO. OF PERSONS		ESTIMATED ¹ DAMAGE		CHARACTER OF STORM
					KILLED	INJURED	PROPERTY	CROPS	
HAWAII									
Kauai and Oahu	26-28		0	0	6	0			Flash Flooding
<p>Heavy rains associated with a stalled cold front caused flooding mainly over windward portions of Kauai and Oahu. Rainfall amounts were generally in the 6 to 15 inch range over the affected area and fell mainly during the night of November 26th-27th. Flooding was most severe in the Lanikai area of windward Oahu. The area near the entrance to Lanikai was flooded by slowly rising canal waters due to the blockage of the outlet by a sand bar. Other portions of Lanikai were visited by heavy runoff from the surrounding hills. Flooding elsewhere around Oahu was relatively minor. Total damage mainly from Lanikai was estimated at \$ 2.1 million.</p> <p>On Kauai the Hanalei and Wainiha rivers overflowed and a number of stalled cars were damaged and people marooned. A burst of heavy thunderstorm rains during the afternoon of November 28th caused additional flood damage just north of Lihue in the Coconut Plantation area.</p>									
51 PUERTO RICO									
Islandwide	3	All day	1	0	6"				C Heavy Rains/ Flooding
<p>Heavy rains, most of which fell during the early morning hours, caused a number of flood situations in various parts of the island. A stationary upper level trough which eventually spawned Hurricane Klaus on 6 November generated a series of heavy showers with intensities ranging in the order of 3 to 5 inches over a 3 hour duration and from 6 to 8 inches in 24 hours. One man drowned in Patillas attempting to drive across a bridge which had been barricaded by the police. One of the heaviest affected areas was Toa Baja-Dorado at the mouth of the La Plata River which was inundated by up to 4 feet of water. Numerous landslides were reported in the higher interior sections of the island and a number of people were evacuated to Civil Defense shelters. In the area of San Lorenzo, the Rio Grande de Loiza ran over its banks at the Marina Bridge, damaging a number of houses along the river. A number of pumping and filtration stations belonging to the Aqueduct and Sewer Authority were damaged in the upper watershed of the La Plata River near Cayey and Aibonito. Farmers reported heavy damage to minor crops due to soil erosion and also loss of a number of cattle.</p>									
Eastern Section, Culebra and Vieques Islands	6	All Day	0	0	5"				C Heavy Rains Wind, Rough Seas
<p>A tropical depression which formed about 100 miles south of Puerto Rico developed rapidly into Tropical Storm Klaus. Movement to the northeast brought the disturbance across the eastern edge of Puerto Rico, affecting mostly the eastern section from Fajardo to Guayama and the offshore islands of Culebra and Vieques. Most damages were due to high winds affecting trees and electrical power installations. Rough seas also caused heavy erosion to coastal roads and marine damage. Heavy road damage between Yabucoa and Ceiba was caused by coastal flooding and wave action. A number of electric power poles were brought down by the wind along with some trees, blocking roads and damaging adjacent buildings. Winds and heavy rains also damaged minor crops in the area.</p>									
52 VIRGIN ISLANDS									
St. Thomas/St. John St. Croix	6-7		0	0	7	0			Heavy Rains, Winds, Rough Seas
<p>Tropical Storm Klaus affected the Virgin Islands as it moved in a northeasterly direction out into the Atlantic from where it formed, just south of Puerto Rico. St. Thomas and St. John received the heavier rains, in the order of 8 to 12 inches, with winds of up to 55 mph in gusts and heavy seas along the coasts. The airport at St. Thomas was under 2-3 feet of water with somewhat lesser amount along the main shopping area of Charlotte Amalie. There was heavy damage from wind and sea action in the piers and marinas of all three islands. Three barges broke loose in the St. Thomas Harbor with damages to small boats in the area. Pier and small boat damage also occurred in the West Indies Dock area of St. Thomas when a cruiser was affected by the high winds and seas. St. Croix received somewhat smaller rainfall amounts, in the order of 6 inches, with less severe local flooding than at the two more northern islands which were closer to the storm center. However, strong sea swells nearly totally destroyed the Frederiksted Pier on the west end of St. Croix, with estimated damage to that structure alone in the order of 3 million dollars. Klaus eventually strengthened to hurricane force about 150 miles northeast of St. Thomas/St. John.</p>									
53 PACIFIC ————— NONE REPORTED									

STORM SUMMARY

NOVEMBER 1984

STATE	TORNADOES					HAILSTORMS				WINDSTORMS				LIGHTNING				FLOODING				HEAVY SNOWSTORMS AND BLIZZARDS				# ICE STORMS				ALL OTHER			
	NUMBER	DAYS	DEATHS	INJURIES	DAMAGE	DEATHS	INJURIES	DAMAGE		DEATHS	INJURIES	DAMAGE		DEATHS	INJURIES	DAMAGE		DEATHS	INJURIES	DAMAGE		DEATHS	INJURIES	DAMAGE		DEATHS	INJURIES	DAMAGE					
								PROP. ERTY	CROPS			PROP. ERTY	CROPS			PROP. ERTY	CROPS			PROP. ERTY	CROPS			PROP. ERTY	CROPS			PROP. ERTY	CROPS				
Alabama	5	1			5						4																						
Arizona																																	
Arkansas	3	2		1	6			?	?	1	5	?		5			5	?															
California										2	1	6	?																				
Colorado											1	4																					
Connecticut																																	
Delaware																																	
Florida	1	1			3					1	?	7																					
Georgia	1	1		8	6			2			3	6			3																		
Idaho																																	
Illinois	6	3		11	6			3				5																					
Indiana												5																					
Iowa								4	3			5										4											
Kansas												4																					
Kentucky												3														9	5						
Louisiana	1	1		5	4						4																						
Maine																																	
Maryland & DC												5																					
Massachusetts																																	
Michigan																																	
Minnesota																																	
Mississippi												4																					
Missouri	9	1	1	15	7			?			3	6			1	?																	
Montana											3	6																					
Nebraska											3	2	3																				
Nevada																																	
New Hampshire																																	
New Jersey																																	
New Mexico																																	
New York																																	
North Carolina																																	
North Dakota																																	
Ohio												5																					
Oklahoma	1	1			3							6																					
Oregon	1	1			5						6	4																					
Pennsylvania																																	
Rhode Island												3																					
South Carolina																																	
South Dakota																																	
Tennessee	2	2		3	4						4		1																				
Texas								?	?		4	?																					
Utah											1																						
Vermont																																	
Virginia																																	
Washington											4																						
West Virginia																																	
Wisconsin																																	
Wyoming											7	3										1	1	4									
Alaska	#																																
Hawaii																																	
Pacific																																	
Puerto Rico											4	C										1		6	C								
Virgin Islands											6																						

REFERENCE NOTES

- † Storm damage categories are from 1 to 9 as follows:
- 1 Less than \$50
 - 2 \$50 to \$500
 - 3 \$500 to \$5,000
 - 4 \$5,000 to \$50,000
 - 5 \$50,000 to \$500,000
 - 6 \$500,000 to \$5 Million
 - 7 \$5 Million to \$50 Million
 - 8 \$50 Million to \$500 Million
 - 9 \$500 Million to \$5 Billion

- * Miles instead of yards
- ** Yards instead of miles
- @ Includes heavy sleet storm
- # Freezing drizzle and freezing rain, commonly known as glaze
- ≠ Not received or incomplete
- o/c Under Estimated Damage, Property/Crops, indicates crop damage amount is included in the figure given

Definition of Fujita Tornado Scale (F scale)

(F0) Gale tornado (40-72 mph): Light damage
Some damage to chimneys; break branches off trees; push over shallow-rooted trees; damage sign boards.

(F1) Moderate tornado (73-112 mph): Moderate damage
The lower limit (73 mph) is the beginning of hurricane wind speed; peel surface off roofs; mobile homes pushed off foundations or overturned; moving autos pushed off the roads.

(F2) Significant tornado (113-157 mph): Considerable damage
Roofs torn off frame houses; mobile homes demolished; boxcars pushed over; large trees snapped or uprooted; light-object missiles generated.

(F3) Severe tornado (158-206 mph): Severe damage
Roofs and some walls torn off well-constructed houses; trains overturned; most trees in forest uprooted; heavy cars lifted off ground and thrown.

(F4) Devastating tornado (207-260 mph): Devastating damage
Well-constructed houses leveled; structure with weak foundation blown off some distance; cars thrown and large missiles generated.

(F5) Incredible tornado (261-318 mph): Incredible damage
Strong frame houses lifted off foundations and carried considerable distance to disintegrate; automobile-sized missiles fly through the air in excess of 100 m; trees debarked; incredible phenomena will occur.

(F6-F12) (319 mph to Mach 1, the speed of sound):
The maximum wind speeds of tornadoes are not expected to reach the F6 wind speeds.

(F0+F1) Weak Tornado
(F2+F3) Strong Tornado
(F4+F5) Violent Tornado



From J. Atmos. Sci., August 1981, p. 1517-1519

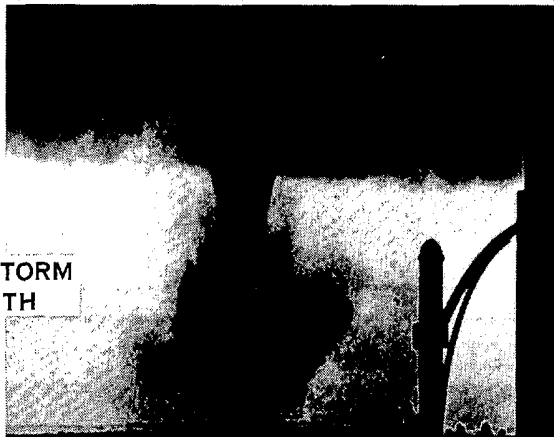
USCOMM-NOAA-ASHEVILLE, NC 1984-2500

STORM DATA

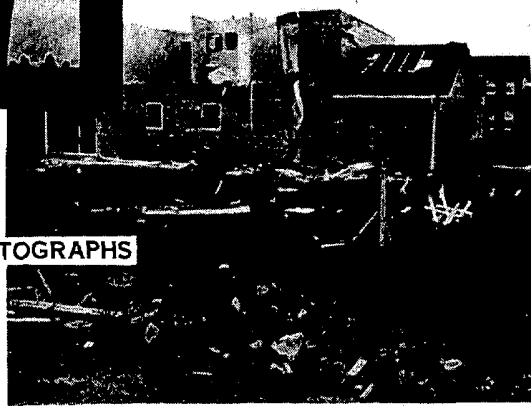
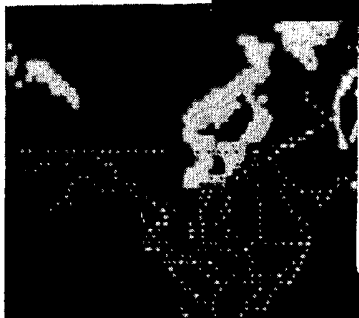
A MONTHLY PUBLICATION FROM
THE NATIONS CLIMATE EXPERTS



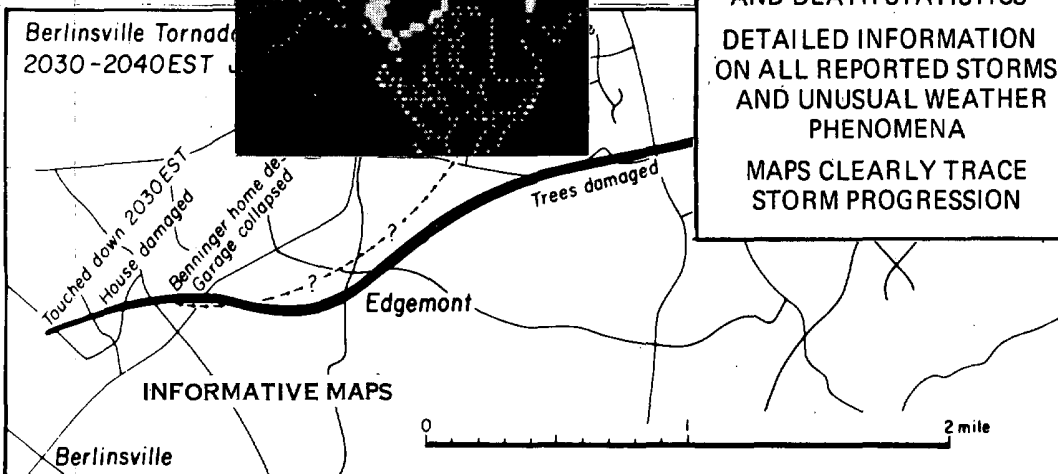
OUTSTANDING STORM
OF THE MONTH



DESCRIPTIVE PHOTOGRAPHS



SATELLITE PHOTOGRAPHS



STATE BY STATE SUMMARY
OF DAMAGE, INJURY
AND DEATH STATISTICS
DETAILED INFORMATION
ON ALL REPORTED STORMS
AND UNUSUAL WEATHER
PHENOMENA
MAPS CLEARLY TRACE
STORM PROGRESSION

noaa

NATIONAL OCEANIC AND
ATMOSPHERIC ADMINISTRATION

NATIONAL ENVIRONMENTAL SATELLITE,
DATA, AND INFORMATION SERVICE

NATIONAL CLIMATIC DATA CENTER
ASHEVILLE, N.C.

CHECK THE EXTENT OF STORM DETAILS OFFERED IN STATE-BY-STATE TABLES...

STORM DATA AND UNUSUAL WEATHER PHENOMENA

AUGUST 1984

PLACE	DATE	TIME - LOCAL STANDARD	LENGTH OF PATH (MILES)	WIDTH OF PATH (YARDS)	NO. OF PERSONS				ESTIMATED DAMAGE	CHARACTER OF STORM	PLACE	DATE	TIME - LOCAL STANDARD	LENGTH OF PATH (MILES)	WIDTH OF PATH (YARDS)	NO. OF PERSONS				ESTIMATED DAMAGE	CHARACTER OF STORM
					KILLED	INJURED	PROPERTY	CROPS								KILLED	INJURED	PROPERTY	CROPS		

NEBRASKA

Cherry County 4 1400-1530CST 0 0 4 5 Hail and Damaging Winds
 One and a half inch hail covered the ground a 20 mile swath through the Sparks area damaging hay and some corn crops. High winds with thunderstorm downed trees and damaged a building 3 1/2 miles northeast of Valentine.

Cherry County 4 1400

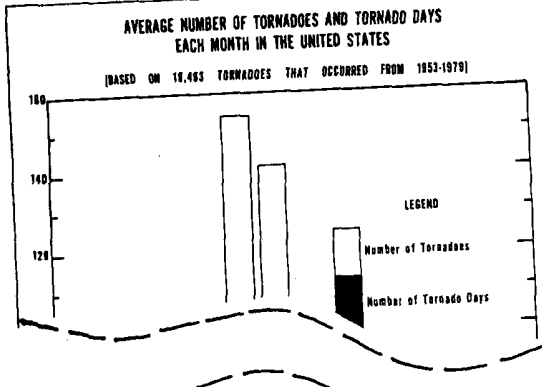
NEBRASKA

Lincoln County 6 0400CST
 From 8 miles northwest of ... 0 0
 County ...

STORM SUMMARY

AUGUST 1984

STATE	TORNADOES				HAILSTORMS				WINDSTORMS			LIGHTNING			HEAVY SNOWSTORMS AND BLIZZARDS			# ICE STORMS			ALL OTHER		
	NUMBER	DAYS	DEATHS	INJURIES	DAMAGE	DEATHS	INJURIES	DAMAGE	DEATHS	INJURIES	DAMAGE	DEATHS	INJURIES	DAMAGE	DEATHS	INJURIES	DAMAGE	DEATHS	INJURIES	DAMAGE	DEATHS	INJURIES	DAMAGE



STATE	TORNADOES				DAYS				DEATHS			
	TOTAL	AVER. AGE	GREAT-EST	YEAR LEAST	TOTAL	AVER. AGE	TOTAL	AVER. AGE	TOTAL	AVER. AGE	TOTAL	AVER. AGE
Alabama	536	20	45	1973	1	1956	3.85	291	11	202	7	39
Alaska	1	0	1	1959	0	1979	.00	1	0	0	0	0
Arizona	96	4	17	1972	0	1954	.32	82	3	3	0	0
Arkansas	549	20	50	1973	2	1969	3.83	278	10	3	0	0
California	88	3	13	1976	0	1968	.21	64	2	0	0	0
Colorado	435	16	42	1976	1	1959	1.55	284	11	2	0	0
Connecticut	41	2	8	1975	0	1978	3.03	37	1	4	0	0
Delaware	26	1	5	1975	0	1978	4.68	24	1	0	0	0
District of Columbia	0	0	0	0	0	1978	.00	0	0	0	0	0
Florida	1095	41	97	1975	10	1956	5.93	697	26	51	2	9
Georgia	562	21	46	1971	7	1980	3.54	326	12	72	3	12
Hawaii	18	1	4	1971	0	1978	.92	23	0	0	0	0
Idaho	36	1	5	1967	0	1977	.16	13	0	0	0	0
Illinois	236	27	107	1974	4	1953	4.83	342	13	129	5	23
Indiana	603	22	48	1973	6	1972	6.15	290	11	200	7	55
Iowa	726	27	54	1964	7	1956	4.78	339	13	54	2	10
Kansas	1194	44	97	1955	14	1976	1.98	121	4	99	4	20
Kentucky	214	8	34	1974	0	1953	5.38	555	21	162	6	20
Louisiana	330	20	55	1974	0	1955	4.05	334	12	86	3	18
Maine	70	3	11	1971	0	1979	.78	62	2	1	0	0
Maryland	75	3	10	1975	0							
Massachusetts	101	4	10	1975	0							
Michigan												

ORDER BLANK

PLEASE ENTER MY ONE YEAR SUBSCRIPTION, (12 ISSUES) FOR STORM DATA

ENCLOSED IS \$ 13.80 (MAKE CHECKS PAYABLE TO DOC/NOAA/NCDC)

CHARGE TO MY CREDIT CARD. VISA MASTER CARD

NUMBER _____ EXPIRATION DATE _____

SIGNATURE _____

MAIL MY STORM DATA SUBSCRIPTION TO:

NAME _____

ADDRESS _____

ADDRESS _____

CITY _____ STATE _____ ZIP _____

MAIL TO: NATIONAL CLIMATIC DATA CENTER, FEDERAL BUILDING, ASHEVILLE, N.C. 28801

DEPARTMENT OF COMMERCE
NATIONAL OCEANIC AND ATMOSPHERIC ADMINISTRATION
NATIONAL ENVIRONMENTAL SATELLITE, DATA, AND INFORMATION SERVICE
NATIONAL CLIMATIC DATA CENTER
FEDERAL BUILDING
ASHEVILLE, N.C. 28801

POSTAGE AND FEES PAID
U.S. DEPARTMENT OF COMMERCE

COM 210
THIRD CLASS
BULK RATE

