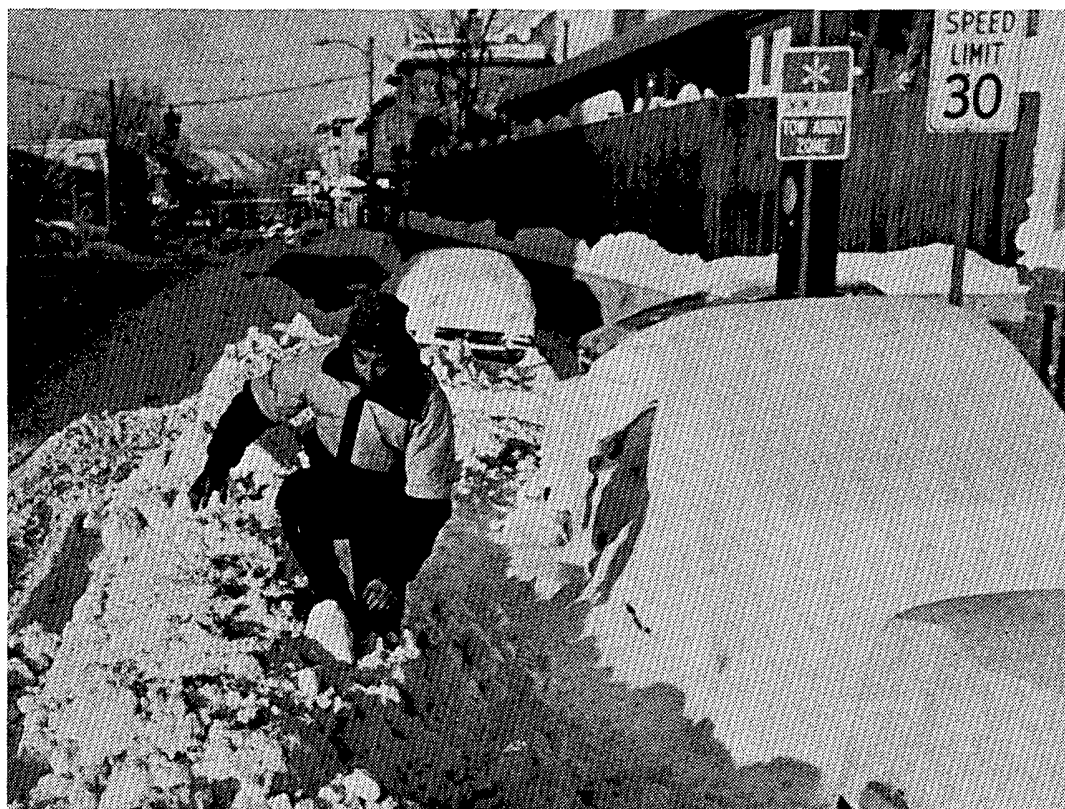


# STORM DATA



"I CERTIFY THAT THIS IS AN OFFICIAL PUBLICATION OF THE NATIONAL OCEANIC AND ATMOSPHERIC ADMINISTRATION AND IS COMPILED FROM INFORMATION RECEIVED AT THE NATIONAL CLIMATIC DATA CENTER, ASHEVILLE, N.C. 28801"

*L. Ray Hoxit*  
ACTING DIRECTOR  
NATIONAL CLIMATIC DATA CENTER

This publication is funded by the  
National Oceanic and Atmospheric Administration and the Federal Emergency Management Agency

## C O N T E N T S

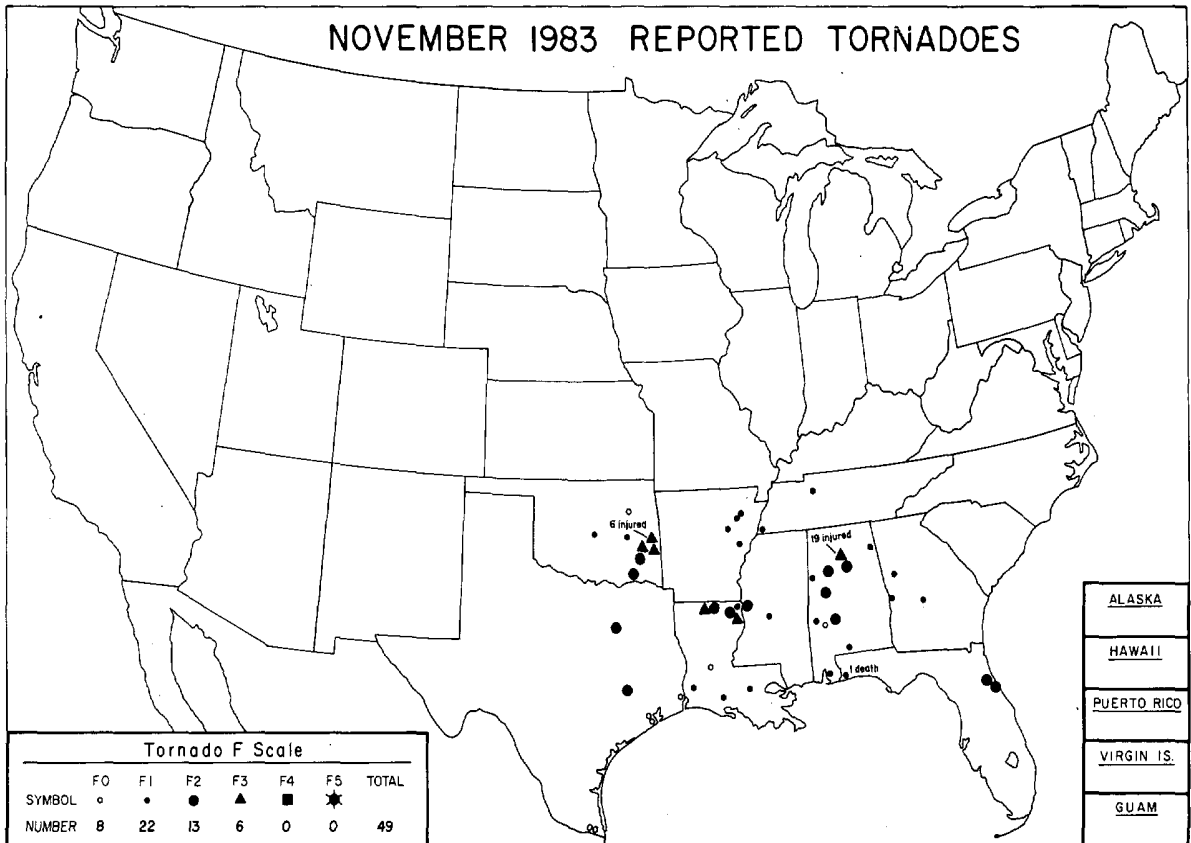
	<u>Page</u>
Outstanding Storms of the Month.....	3
Storm Data and Unusual Weather Phenomena.....	11
Storm Summary.....	26
Reference Notes.....	27
"F" Scale Definitions.....	27

Cover: Some of the many vehicles that obstructed snow routes when Denver, CO was blanketed by up to 22 inches of snow (see SNOWSTORM in the NORTHERN PLAINS, page 5).  
---Photo by Lyn Alweis, The Denver Post.

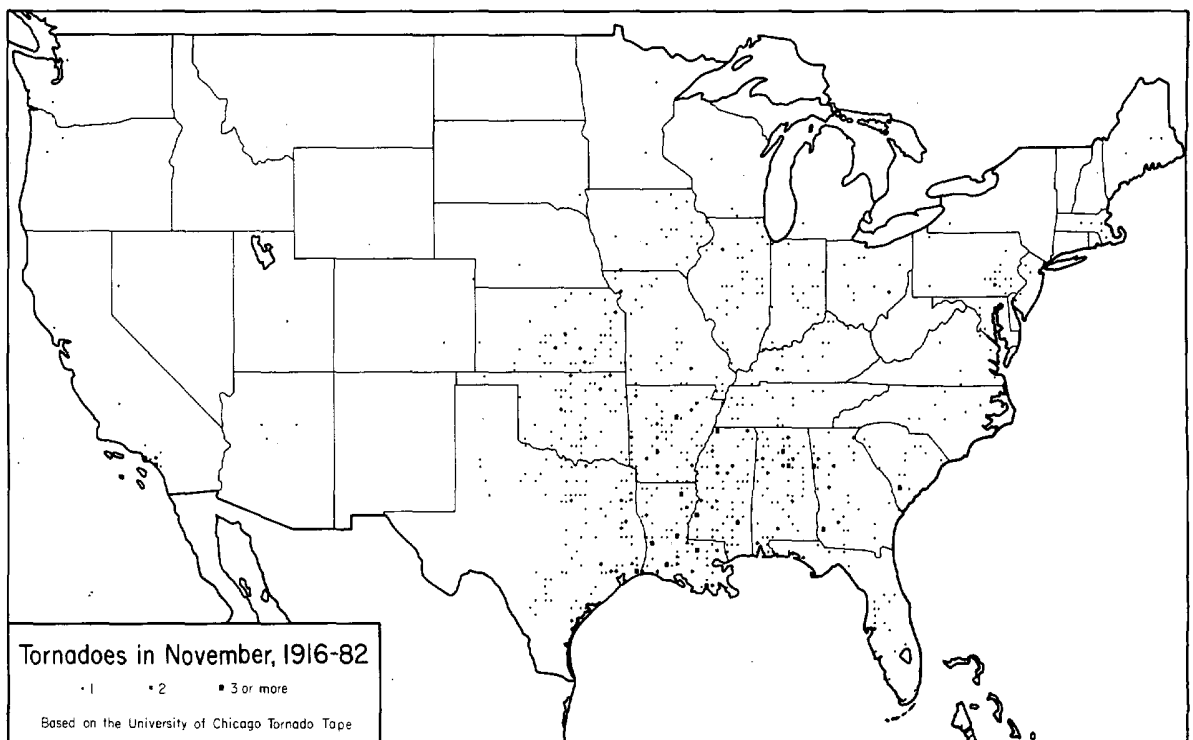
NOTE: The section on Outstanding Storms of the Month is prepared by Professor T. Theodore Fujita, editor, and Duane J. Stiegler, associate editor, University of Chicago. The narrative descriptions of Storms by State and Summaries of Hurricanes and Tropical Storms are prepared by the National Weather Service. The National Climatic Data Center compiles the statistics on deaths, injuries, and damage. This publication contains our best information on Storms, but, due to the difficulties inherent in collection of this type of data, it is not all-inclusive. Late reports and corrections will be carried quarterly.

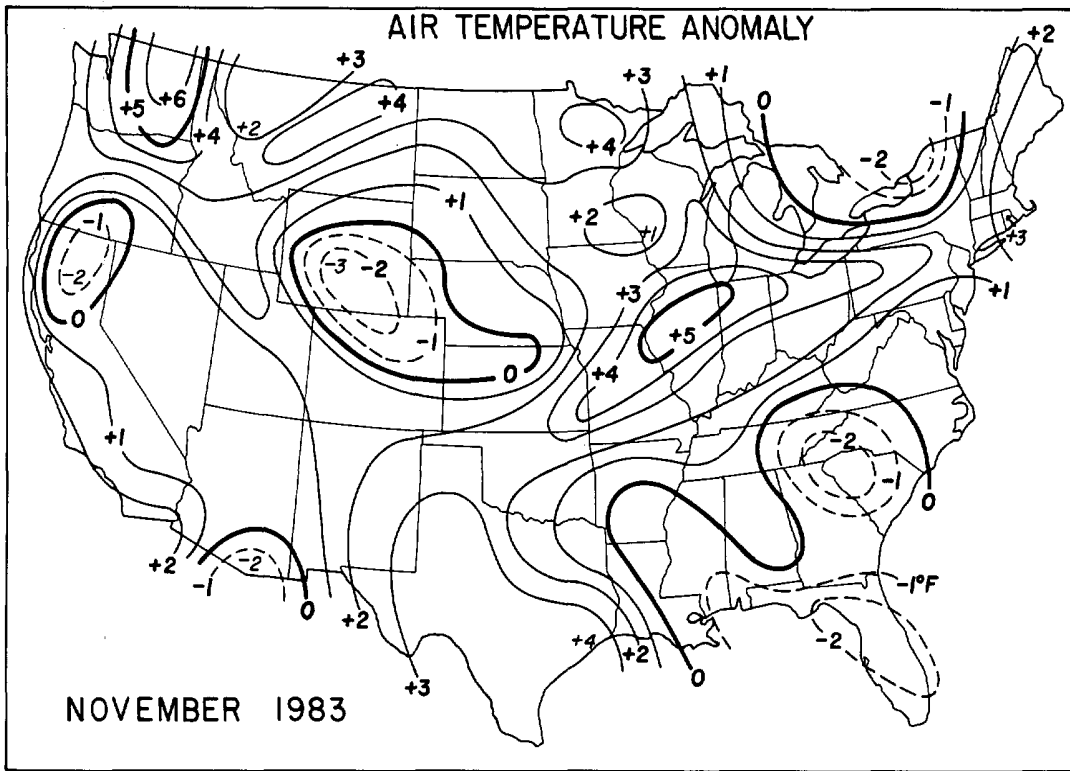
STORM DATA - (ISSN 0039-1972) is published monthly. Subscription, pricing, and ordering information is available from: Publications Section (E/CC413), The National Climatic Data Center, National Environmental Satellite, Data, and Information Service, NOAA, Federal Building, Asheville, NC 28801-2696.

# OUTSTANDING STORMS OF THE MONTH



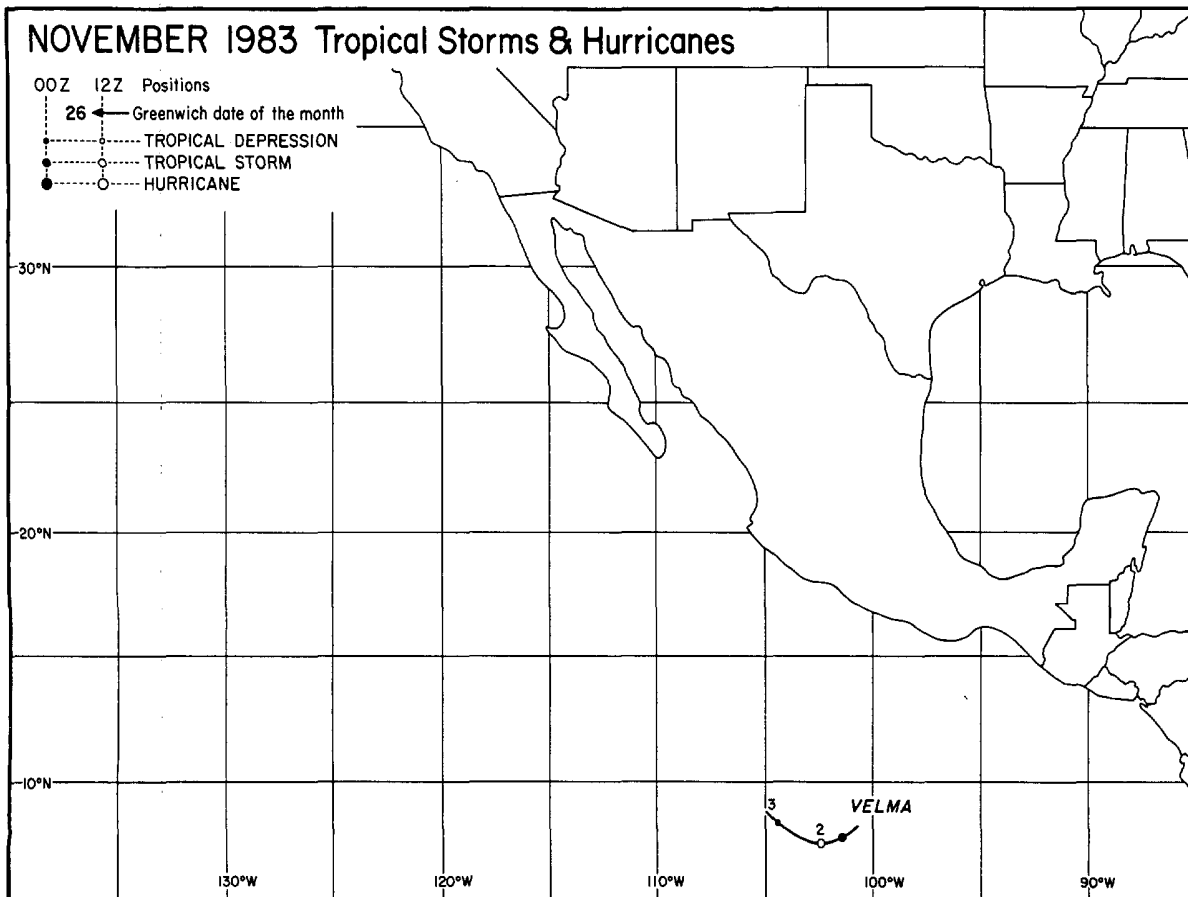
<ul style="list-style-type: none"> <li>● COMPLETE REPORT RECEIVED</li> <li>◐ PRELIMINARY REPORT RECEIVED</li> <li>○ REPORT NOT RECEIVED</li> </ul> <p>(N) northern (W) western (S) southern (C) central (E) eastern (O) coastal (SE) southeastern</p>	<table style="width: 100%; border-collapse: collapse;"> <tr> <td>● 1AL</td><td>● 7DE</td><td>● 14KS</td><td>● 21MN</td><td>● 28NJ</td><td>● 33OH</td><td>● 39SD</td><td>● 44VA</td><td>● 49AK(SE)</td> </tr> <tr> <td>● 2AZ</td><td>● 8FL</td><td>● 15KY</td><td>● 22MS</td><td>● 29NM</td><td>● 34OK</td><td>● 40TN</td><td>● 45WA</td><td>● 50HI</td> </tr> <tr> <td>● 3AR</td><td>● 9GA</td><td>● 16LA</td><td>● 23MO</td><td>● 30NY(O)</td><td>● 35OR</td><td>● 41TX(N)</td><td>● 46WY</td><td>● 51PR</td> </tr> <tr> <td>● 4CA(N)</td><td>● 10ID</td><td>● 17ME</td><td>● 24MT</td><td>● 30NY(C)</td><td>● 36PA(E)</td><td>● 41TX(S)</td><td>● 47WI</td><td>● 52VI</td> </tr> <tr> <td>● 4CA(S)</td><td>● 11IL</td><td>● 18MD</td><td>● 25NE</td><td>● 30NY(W)</td><td>● 36PA(W)</td><td>● 41TX(W)</td><td>● 48WY</td><td>● 53PC</td> </tr> <tr> <td>● 5CO</td><td>● 12IN</td><td>● 19MA</td><td>● 26NV</td><td>● 31NC</td><td>● 37RI</td><td>● 42UT</td><td>● 49AK(N)</td><td></td> </tr> <tr> <td>● 6CT</td><td>● 13IA</td><td>● 20MI</td><td>● 27NH</td><td>● 32ND</td><td>● 38SC</td><td>● 43VT</td><td>● 49AK(S)</td><td></td> </tr> </table>	● 1AL	● 7DE	● 14KS	● 21MN	● 28NJ	● 33OH	● 39SD	● 44VA	● 49AK(SE)	● 2AZ	● 8FL	● 15KY	● 22MS	● 29NM	● 34OK	● 40TN	● 45WA	● 50HI	● 3AR	● 9GA	● 16LA	● 23MO	● 30NY(O)	● 35OR	● 41TX(N)	● 46WY	● 51PR	● 4CA(N)	● 10ID	● 17ME	● 24MT	● 30NY(C)	● 36PA(E)	● 41TX(S)	● 47WI	● 52VI	● 4CA(S)	● 11IL	● 18MD	● 25NE	● 30NY(W)	● 36PA(W)	● 41TX(W)	● 48WY	● 53PC	● 5CO	● 12IN	● 19MA	● 26NV	● 31NC	● 37RI	● 42UT	● 49AK(N)		● 6CT	● 13IA	● 20MI	● 27NH	● 32ND	● 38SC	● 43VT	● 49AK(S)	
● 1AL	● 7DE	● 14KS	● 21MN	● 28NJ	● 33OH	● 39SD	● 44VA	● 49AK(SE)																																																								
● 2AZ	● 8FL	● 15KY	● 22MS	● 29NM	● 34OK	● 40TN	● 45WA	● 50HI																																																								
● 3AR	● 9GA	● 16LA	● 23MO	● 30NY(O)	● 35OR	● 41TX(N)	● 46WY	● 51PR																																																								
● 4CA(N)	● 10ID	● 17ME	● 24MT	● 30NY(C)	● 36PA(E)	● 41TX(S)	● 47WI	● 52VI																																																								
● 4CA(S)	● 11IL	● 18MD	● 25NE	● 30NY(W)	● 36PA(W)	● 41TX(W)	● 48WY	● 53PC																																																								
● 5CO	● 12IN	● 19MA	● 26NV	● 31NC	● 37RI	● 42UT	● 49AK(N)																																																									
● 6CT	● 13IA	● 20MI	● 27NH	● 32ND	● 38SC	● 43VT	● 49AK(S)																																																									





---Data base from NOAA/USDA Joint Agricultural Weather Facility.

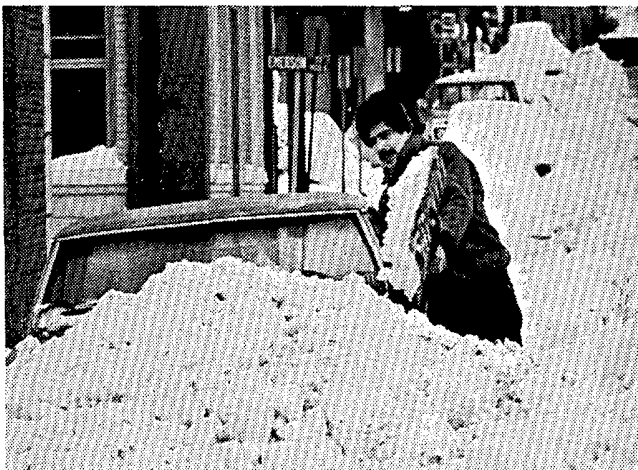
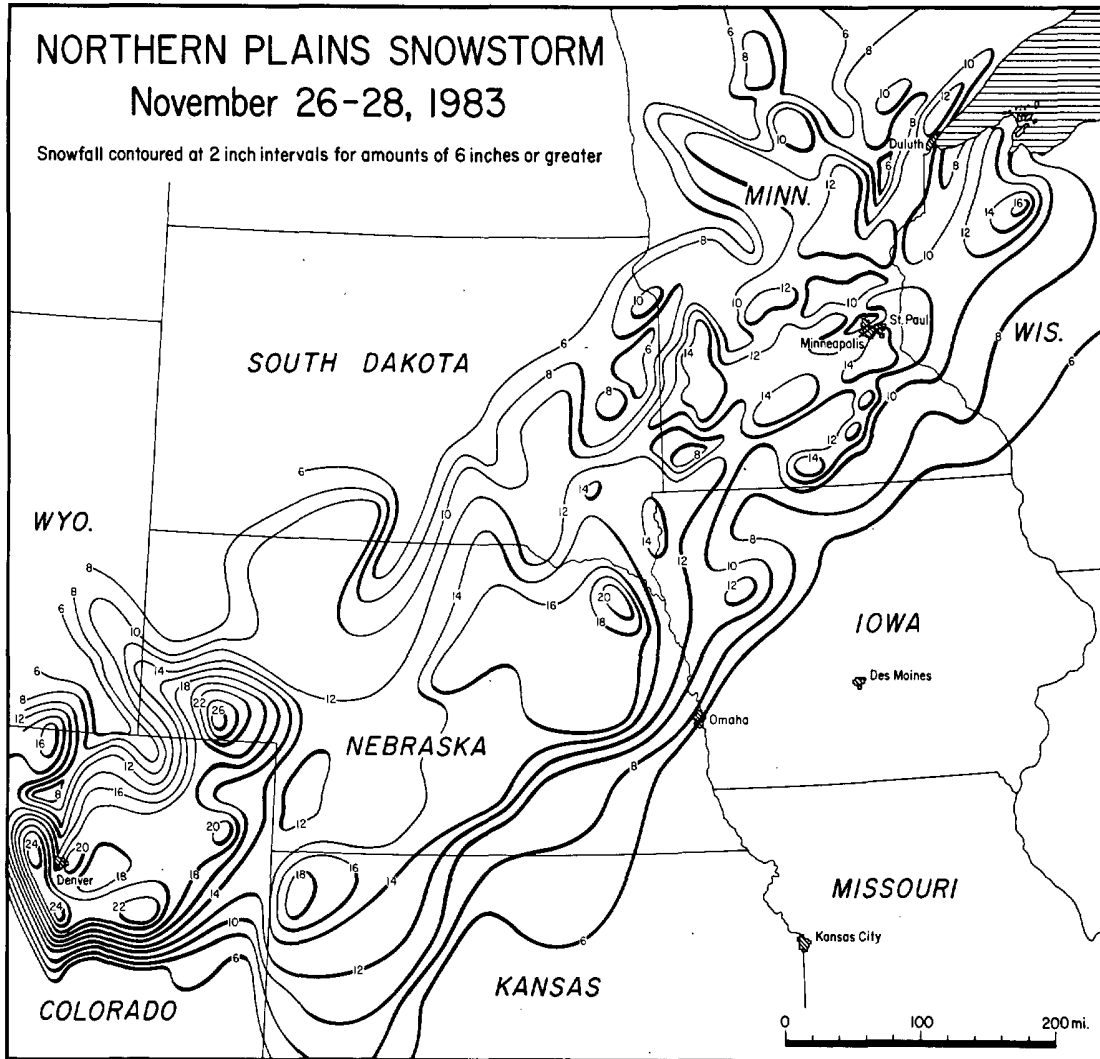
### TROPICAL STORMS AND HURRICANES



---Best track data from NWSFO, San Francisco, CA.

# 1. SNOWSTORM in the NORTHERN PLAINS on November 26-28, 1983

From November 26th to the 28th a massive snowstorm hit the northern plains states with heavy snow, ice, and strong winds along a band from Denver, CO to Duluth, MN. Conditions resulted in the closure of numerous Interstates and Denver Stapleton Int. Airport, leaving many Thanksgiving weekend travelers stranded. ---Snowfall data supplied by NWSFOs at Des Moines, IA; Topeka, KS; Omaha, NE; Sioux Falls, SD; Milwaukee, WI; and Cheyenne, WY; as well as the Colorado Climate Center and the Minnesota State Climatology Office. Mapping by the University of Chicago.

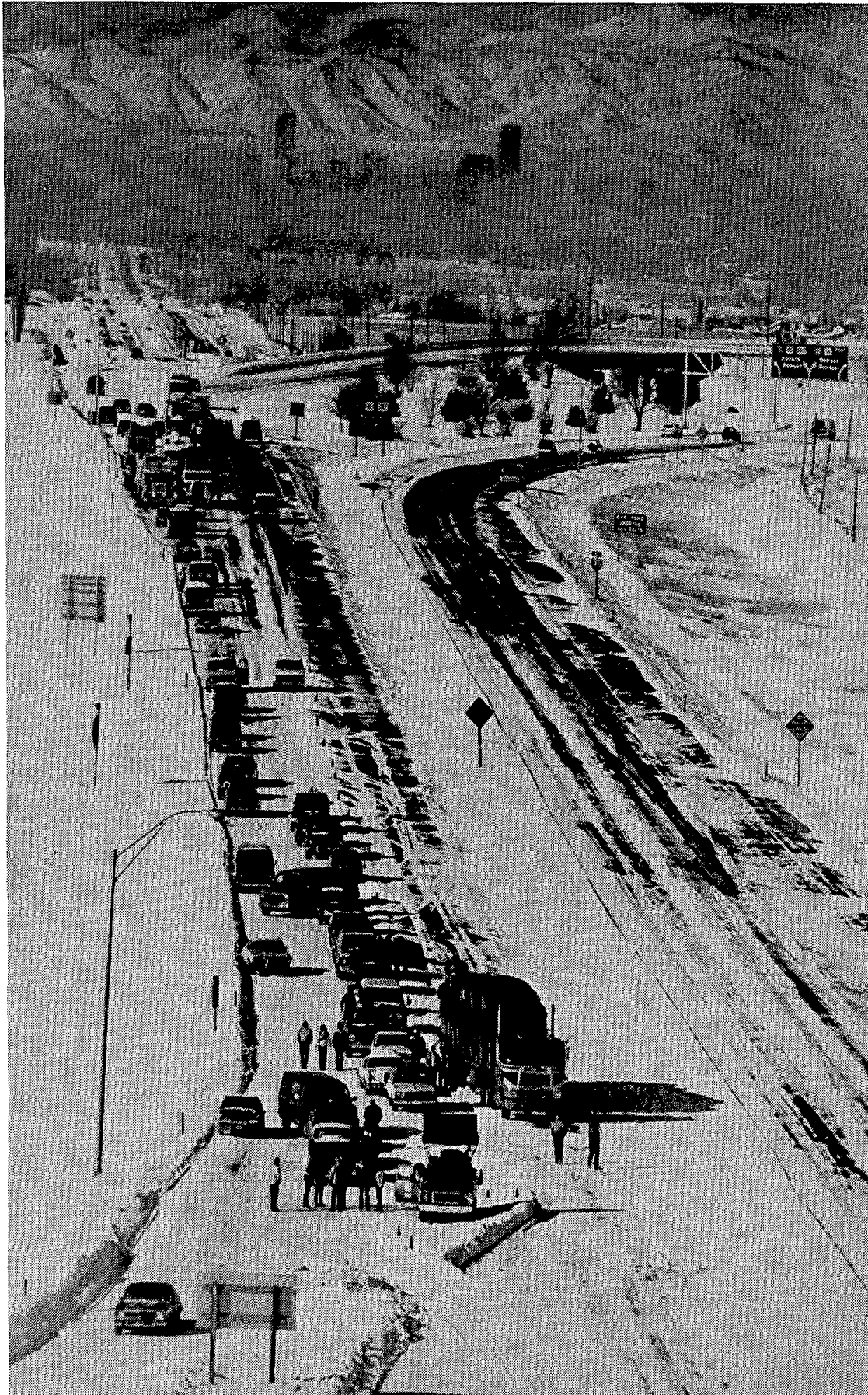


A Denver man digs out his car for a second time after street plows had nearly reburied it. ---Photo by Lyn Alweis, The Denver Post.



A Denver motorist gets some help to free his car from deepening snow during the storm. ---Photo by John Prieto, The Denver Post.

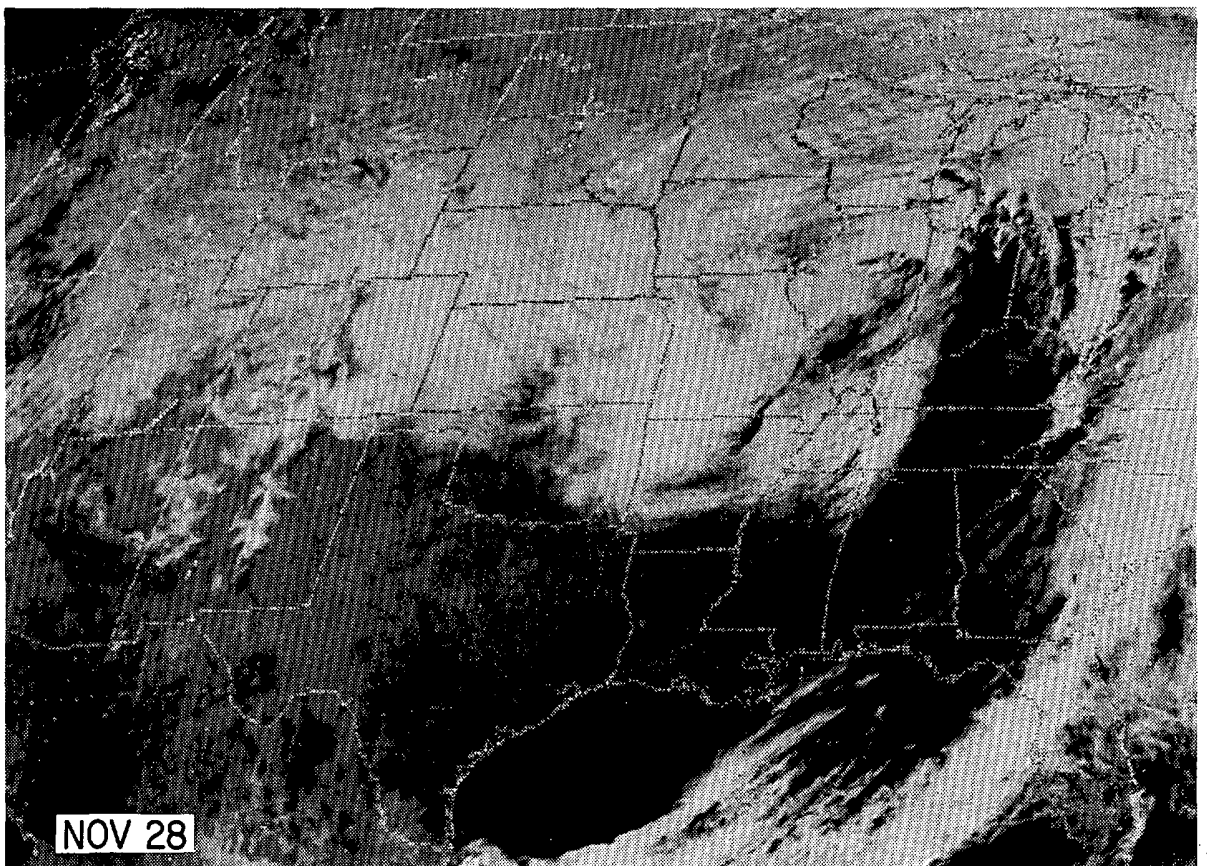
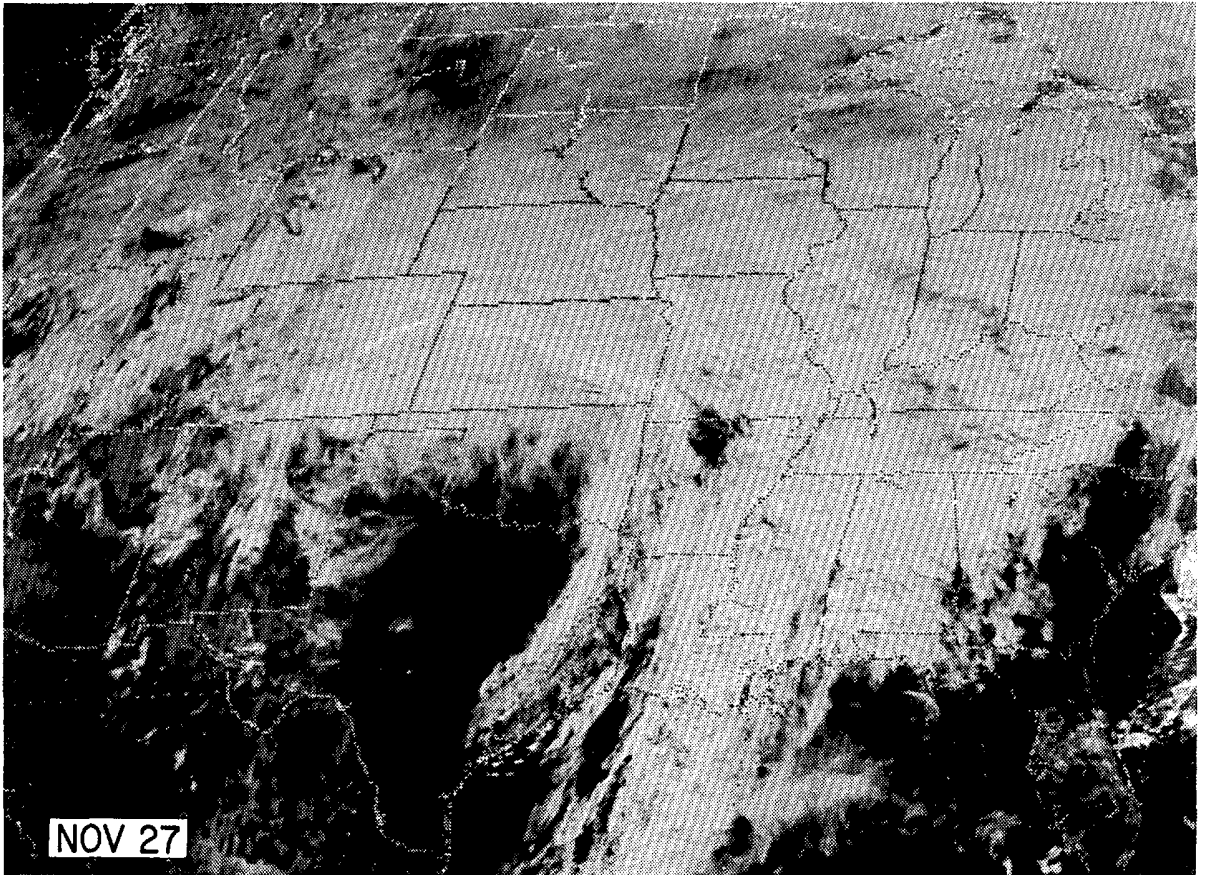
SNOWSTORM in the NORTHERN PLAINS ---- continued



A traffic backup just east of Denver on Interstate 70, after blowing and drifting snow had closed the road between Denver and Kansas. ---Photo by Anthony Suau, The Denver Post.



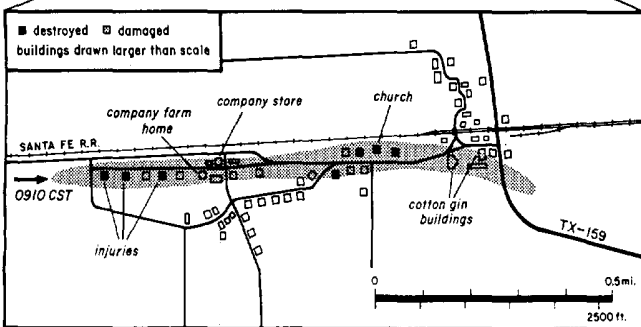
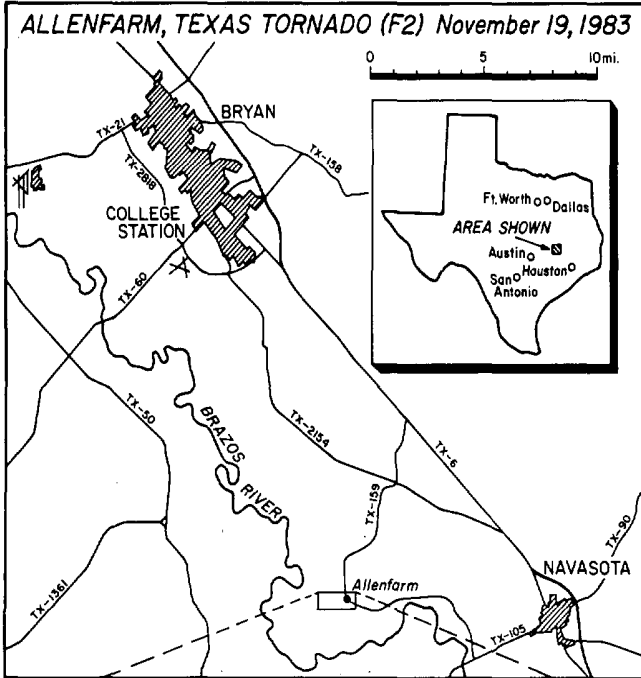
SNOWSTORM in the NORTHERN PLAINS ---- continued



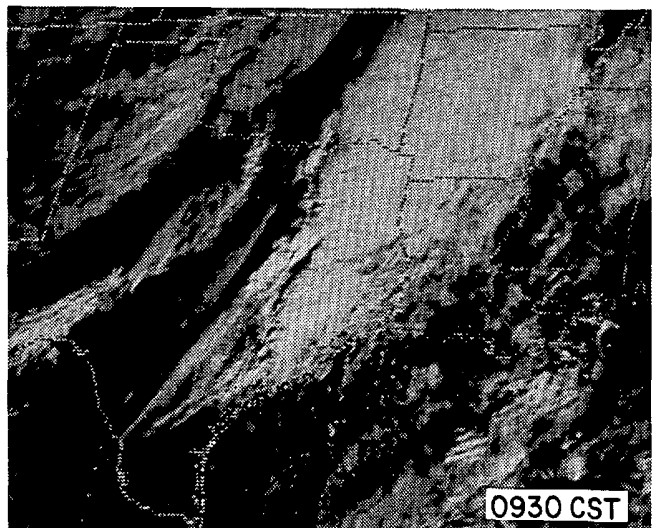
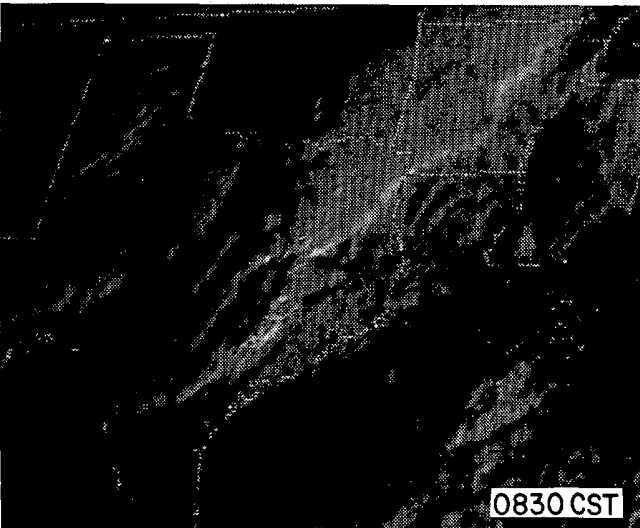
Two GOES East satellite, visible images show the snow-producing cyclone at 1130 CST (1730 GMT) on November 27th and 28th. ---Photos from NESDIS.

2. TORNADO at ALLENFARM, TEXAS on November 19, 1983

At 0910 CST on November 19th, a short-lived tornado touched down in Allenfarm, Texas. The tornado was unusual in that it travelled down the main road of an old cotton plantation, destroying many of the only buildings for miles around. It also surprised many residents who mistakingly believed the approaching sound to be a freight train on the nearby railroad.



LEFT: Mapped damage path. RIGHT: Aerial view of Allenfarm (looking east). The tornado moved from the lower right to upper left corner of the photo.



The early morning thunderstorms as seen in GOES East satellite, visible photos at 0830 CST and 0930 CST on November 19th. ---Photos from NESDIS.



TORNADO at ALLENFARM, TEXAS ---- continued



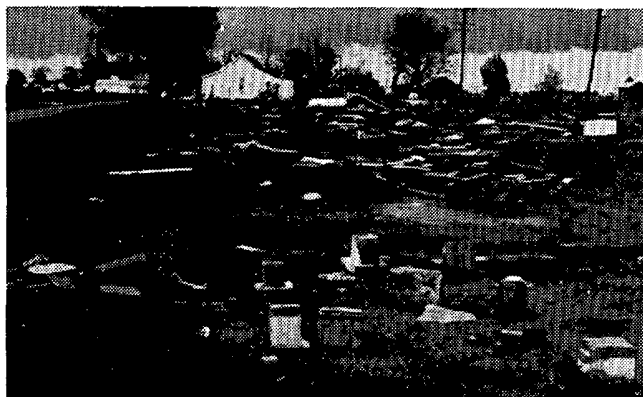
Three sites of destroyed homes where injuries occurred at the beginning of the damage path (looking northwest).



A destroyed church viewed looking south.



A damaged cotton gin facility near the end of the damage path (looking northwest).



Blocks on which sat home #1 in the top photo (looking east).



Debris from home site #3 (looking south-east).

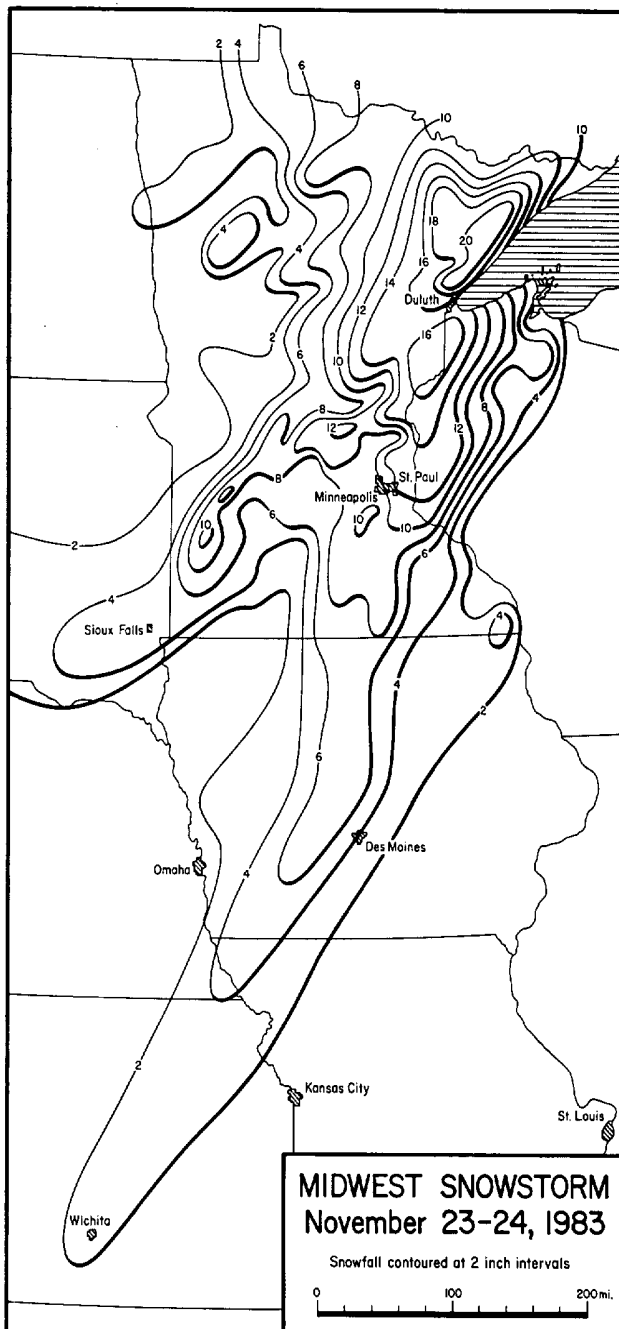


Various damage to homes about midway along the tornado path.

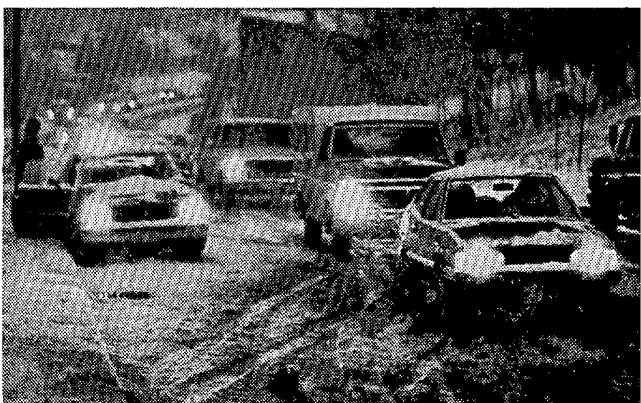
---Map and all photos by Troy M. Kimmel, KBTX-TV, Bryan, Texas.

### 3. SNOWSTORM in the UPPER MIDWEST on November 23-24, 1983

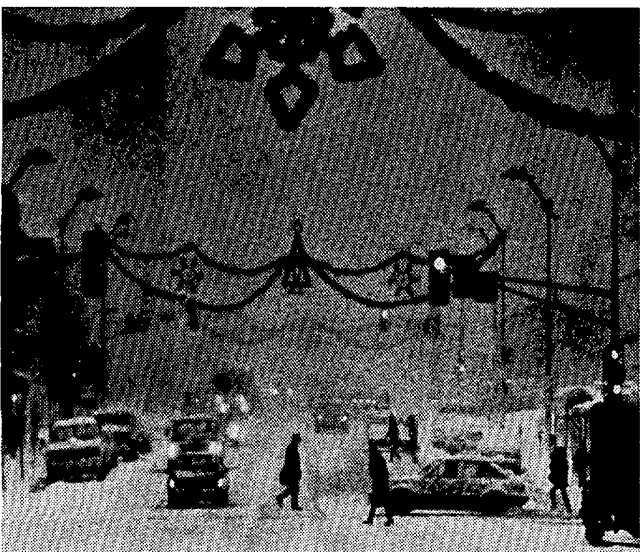
On November 23rd and 24th the first major cyclone of the winter season dumped a heavy, wet snow through the Upper Midwest, with a narrow band extending as far south as Wichita, KS. Hardest hit was Duluth, MN which received 20.7 inches of snow, 16.6 inches of which fell in 24 hours. ---Snowfall data supplied by the Minnesota State Climatology Office and NWSFOs at Des Moines, IA and Milwaukee, WI.



Citizens of Duluth cower in blowing snow while waiting to board a bus.



Traffic creeps by a stalled auto as slick conditions made for hazardous driving.



This Duluth street demonstrates the reduced visibility caused by the blowing snow. ---Photo by Bob King.



Even with help, this car got little traction in the wet snow, and just slid sideways. ---Photo by John Rott.

---All photos from the Duluth News-Tribune & Herald.

# STORM DATA AND UNUSUAL WEATHER PHENOMENA

NOVEMBER 1983

PLACE	DATE	TIME - LOCAL STANDARD	LENGTH OF PATH (MILES)	WIDTH OF PATH (YARDS)	NO. OF PERSONS		ESTIMATED DAMAGE		CHARACTER OF STORM
					KILLED	INJURED	PROPERTY	CROPS	

PLACE	DATE	TIME - LOCAL STANDARD	LENGTH OF PATH (MILES)	WIDTH OF PATH (YARDS)	NO. OF PERSONS		ESTIMATED DAMAGE		CHARACTER OF STORM
					KILLED	INJURED	PROPERTY	CROPS	

1 ALABAMA										
Fulton area, Clarke County	14	1730CST	.1	50	0	0	0	3	0	Tornado (F0) A tornado touched down briefly with roof damage to one home and trees twisted off.
Guin area, Marion County	14	2300CST						0	3	Wind Thunderstorm winds, accompanied by marble size hail downed trees and utility lines.
Cullman County	15	0012CST	17	100	0	19	6	0	0	Tornado (F3) 500 A tornado apparently first touched down just southwest of Phelan where it crossed U.S. 31 and moved NE striking Bolte, Berlin, and the Birdsong area before finally lifting just southeast of Baileyton. The storm was most intense and the path was widest in Bolte where several homes, including a two story brick structure were flattened. Only the basement of the brick home was left and three occupants of the basement were among the 19 people injured by the storm. Two of the injured were hospitalized. At least 10 homes and 10 mobile homes were destroyed. Twenty-two houses, five mobile homes, a grocery store, a church and two chicken houses were among the many buildings damaged. The roof of the church auditorium caved in when the windward wall failed. The church had been built in 1954 to replace one that was destroyed by another tornado about 1/4 mile from the present site in 1953. Several vehicles were damaged or destroyed by the tornado which appeared to be on the ground for about 70% of its path.  Two occupants of a mobile home were reported to have been blown some 75 yards away from their homesite and six occupants of one frame house that was leveled were blown into an open field. At least one automobile was reported to have been blown some 50 yards and landed upside down. Other wind damage mainly to trees and utility lines occurred in the county as intense thunderstorms moved through the area.
Walker County	15	0110CST			1	0	4	0	0	Wind A ninety-four year old woman was killed when a giant tree fell across her mobile home in the Benchfield Community south of Cordova. Some other trees and utility lines were also downed by thunderstorm winds in the Dora and Sumton areas.
Blount County	15	0130CST	.5	30-40	0	0	4	0	0	Tornado (F2) A sheet metal type building, that housed a rural fire department, on Pine Mountain near Oneonta was destroyed by a tornado. Damage to fire engines was mainly dents and glass broken. Some trees were also downed.
Antioch Area, Tuscaloosa County	15	0130CST	.2	40	0	0	4	0	0	Tornado (F2) A tornado touched down briefly and caused considerable damage to a small area. The most damage was apparently around one homesite where the home sustained roof and foundation damage, a mobile home was destroyed, and a 1982 station wagon lifted up and moved some 30 feet. Another home some 300 yards away was less severely damaged. Hail was reported as occurring just before the tornado struck.
Cherokee County	15	0255CST	.8	40	0	0	4	0	0	Tornado (F1) A tornado touched down in the Bomar Community east of Centre. The roof and porch were blown off a home, but the occupants were not injured. Another home had roof damage and a barn was destroyed. The debris from the barn was blown some 100 yards into a lake.
Robertsdale, Baldwin County	15	0705CST	.1	20	0	0	4	0	0	Tornado (F1) Witnesses reported a small tornado dipped down in two spots while moving southeast. The tornado damaged the roof of the coliseum and windows were broken out of one home about two blocks away.
Lamar County	19	2238CST			0	0	2	0	0	Wind Thunderstorm winds downed some trees in northern Lamar County. Trees were also downed in the southern part of the county around 2305CST.
Mobile, Mobile County	20	0010CST			0	0	1	0	0	Wind Thunderstorm winds gusted to 58 mph at the Mobile Airport. Trees and power lines were downed in the area and some small outbuildings were damaged.
Escambia County	20	0140CST	1.5	100	0	1	5	0	0	Tornado (F1) A tornado touched down about 1 1/2 miles south of Riverview just west of Alabama Highway 41 and moved NE across Highway 41 and County Road 55. One person was reported to have been slightly injured. Damage included three homes, two mobile home and five automobiles damaged.
Marshall County	20	0140CST			0	0	1	0	0	Wind Trees reported downed east of Albertville by thunderstorm winds.
Etowah County	20	0147CST								Funnel clouds Spotters reported funnel clouds near Southside in southern Etowah County and near Walnut Grove in northwest Etowah County.
Calhoun County	20	0206CST								Funnel Cloud A spotter reported funnel cloud plainly visible near White Plains east of Jacksonville.

— ALABAMA										
DeKalb County	20	0208CST			0	0	?	0	0	Wind Two buildings were reported damaged by thunderstorm winds just north of Geraldine. Pover was out in Fort Payne.
Cherokee County	20	0242CST								Funnel Cloud A spotter reported a funnel cloud just east of Centre.
Lamar County	23	1100CST			0	0	?	0	0	Wind Thunderstorm winds downed trees in the Millport area.
Pickens County	23	1105CST			0	0	?	0	0	Wind Thunderstorm winds downed trees in the Aliceville area.
Fayette County	23	1120CST			0	0	?	0	0	Winds Winds downed some trees and utility lines as a band of intense thunderstorms moved eastward over the area.
Fayette County	23	1122CST	8	50-100	0	0	4	0	0	Tornado (F1) A tornado first touched down near Alabama Highway 18 near the Fayette/Lamar County line and crossed Alabama 107 before lifting east of the Bethel Community. The tornado apparently skipped along a very narrow path and damage was mainly to trees and utility lines. One home and some outbuildings were damaged and 3 cows were killed by falling trees. One dairy barn lost part of its roof.
Colbert County	23	1130CST			0	0	3	0	0	Wind Thunderstorm winds downed trees and heavily damaged a camper trailer at LaGrange in southeast Colbert County.
Franklin County	23	1130CST			0	0	4	0	0	Wind A large light pole at Vina High School was blown down, a building was damaged in Russellville and numerous trees were downed across the county as a band of intense thunderstorms moved through.
Town Creek, Lawrence County	23	1200CST			0	0	4	0	0	Wind Trees and utility lines were downed by thunderstorm winds.
Walker County	23	1200CST								Funnel Cloud Funnel cloud reported just north of Jasper.
Curry Area, Walker County	23	1200CST	.5	150	0	0	4	0	0	Tornado (F2) A tornado touched down about 3/4 mile south of Curry near Alabama Highway 157 and was reported as moving almost due north. The roof of a barn was blown into a power substation and there was extensive damage to the substation. Poles were broken in the area. Eight barns were damaged or destroyed. Some homes in the area sustained roof damage and trees were downed.
Limestone County	23	1200CST			0	0	?	0	0	Wind Thunderstorm winds downed trees and power lines at Blackburn and Ripley in the western part of the county.
Morgan County	23	1200CST			0	0	?	0	0	Wind Thunderstorm winds downed trees in the southwest part of Decatur. Some trees were also reported down in other parts of the county.
Madison County	23	1245CST			0	0	?	0	0	Wind Large trees were blown down in the northeast part of Huntsville and some roads were blocked. Pea size hail was also reported.
Blount County	23	1300CST			0	0	?	0	0	Wind Trees reported blown down or near Alabama Highway 79 between Oneonta and Snead.
Northport, Tuscaloosa County	23	1310CST			0	0	?	0	0	Wind Thunderstorm winds gusted to 58 mph at the airport.
Jefferson County	23	1300 - 1315CST			0	0	?	0	0	Wind Thunderstorm winds downed trees and some power lines. Some trees were reported to have fallen on cars in the Ensley area. Fallen power lines blocked U. S. 78 in the 1200 block just west of Birmingham.
Marshall County	23	1400CST			0	0	?	0	0	Wind Numerous trees were reported blown down in parts of the county by thunderstorm winds.
Mobile County	23	1635CST			0	0	3	0	0	Wind Thunderstorm winds caused minor damage to a home and workshed.

# STORM DATA AND UNUSUAL WEATHER PHENOMENA

NOVEMBER 1983

PLACE	DATE	TIME - LOCAL STANDARD	LENGTH OF PATH (MILES)	WIDTH OF PATH (YARDS)	NO. OF PERSONS		ESTIMATED DAMAGE		CHARACTER OF STORM
					KILLED	INJURED	PROPERTY	CROPS	

## ALABAMA

Wilcox County	27	1148CST	4	50-100	0	2	5	0	Tornado (F2)
<p>A small, but powerful, tornado cut a path through the eastern part of Camden. One person, a customer at a business that was destroyed, was hospitalized due to injuries sustained when hit by concrete blocks from the upper part of a wall that fell on him. Another person in the store suffered only scratches. Three businesses were destroyed and a fourth heavily damaged. Several automobiles parked on a sales lot were among those damaged when the office and shop building of that business was destroyed. Several nearby residents reported seeing the funnel shaped cloud with its debris, as it moved across the area.</p>									
Hugo area, Marengo County	27	1300CST	**00	20	0	0	4	0	Tornado (F1)
<p>An apparent tornado dipped down briefly and ripped the roof off a home while the occupants were having lunch. no injuries were reported, but the whole house was reported as ruined. The entire roof was reported to have been ripped from the house, turned around upside down and blown into the back yard.</p>									
Jefferson County	27	Evening			0	0	?	0	Flash Flood
<p>A new 24 hour record rainfall for November of 5.20 inches triggered flash flooding of low areas. Rising water was above the headlights of cars on some streets including the Bessemer Super Highway, U.S. 31 in Vestavia, and Tallapoosa Street in east Birmingham. Water ran into the rooms of one motel on the Bessemer Highway and people had to be evacuated from their homes in Ensley and east Birmingham.</p>									

## 2 ARIZONA

Mohave County	20	2025MST		4	0	5	0	Heavy Snowstorm	
<p>During a heavy snowstorm, a single-engine plane crashed 200 feet from the top of a mountain peak in the southern part of the county, killing four people.</p>									
Grand Canyon, Coconino County	25	1700MST			5	0	4	0	Heavy Snowstorm
<p>A heavy snowstorm with visibility near zero caused a head-on auto crash near here that killed five people.</p>									

## 3 ARKANSAS

Jackson County	03	1636CST		0	1	5	?	Severe thunder-	
<p>A strong thunderstorm dumped golfball size hail storm in Newport. A radio station reported 80 MPH winds with the storm. Extensive window damage was reported in the city. Trees, power lines, utility poles, and antennas were blown down. There were reports of damages to roofing shingles and gutters. One woman suffered minor injuries from flying debris. Also, part of the roof was blown off at the Newport Fire Department. There were numerous vehicles damaged by the hail.</p>									
Ashley County	14	2100CST			0	0	2	-	Wind
<p>Strong thunderstorm winds knocked down several trees in Portland, without damaging homes or other structures.</p>									
Madison County	19	0540CST			0	0	-	-	Hail
<p>The Huntsville Police Department reported golf-ball size hail.</p>									
Hempstead County	19	1020-1035CST			0	0	5	-	Wind
<p>Strong, thunderstorm winds destroyed 2 chicken houses and one barn killing most of the chickens, 3 miles north of Hope. Also, an old barn was damaged at Ozan, and one home had roof damage at Guernsey.</p>									
Hot Spring County	19	1140-1200CST			0	0	3	-	Wind
<p>Strong, gusty winds struck Friendship, Jones Mills, and Malvern. Damage was confined to trees, tree limbs, and power lines.</p>									
Garland County	19	1141CST			0	0	?	?	Hail
<p>Hail was reported in downtown Hot Springs, measuring 3 inches in diameter. Some localized urban flooding occurred along parts of the city.</p>									

## ARKANSAS

Pulaski County	19	1230-1255CST		0	3	6	-	Wind	
<p>A strong thunderstorm moved northeast through the county producing strong, damaging winds that were clocked at 60 MPH in Jacksonville. Major damage occurred to one dozen homes in western Little Rock, as well as many businesses. Major damage to homes occurred in Runyan Acres in the northern end of the county. About 17 homes had minor damage. Many trees and power lines were downed. The injuries happened as the storm moved through Runyan Acres, with one of the persons requiring hospitalization.</p>									
White County	19	1305CST			0	0	4	-	Wind
<p>Thunderstorm gusts blew down 2 barns and killed 7 cows in the vicinity of Antloch.</p>									
Lawrence County	19	about 1914CST			0	1	6	-	Lightning
<p>Lightning started a fire at a Walnut Ridge furniture store. A total of 4 businesses were destroyed by the fire, with 2 other businesses receiving smoke damage. One firefighter was injured while fighting the blaze.</p>									
Craighead County	22	1323 and 1514CST			0	0	2	-	Lightning
<p>Lightning struck two Jonesboro residences, causing only brief fires and minor damages.</p>									
Pope County	22	2040CST			0	3	4	-	Lightning
<p>An Oak Grove residence caught on fire after being struck by lightning. The two occupants suffered minor burns and smoke inhalation. One rescuer was cut while pulling one of the occupants out of the burning home. The home was destroyed completely.</p>									
Ouachita County	23	0141CST			0	0	4	?	Wind
<p>Two mobile homes were damaged by strong thunderstorm winds on the west side of Camden. There was an unspecified amount of timber damage between Buena Vista and Camden from a downburst.</p>									
Little River County	23	0148-0205CST			0	0	5	-	Wind
<p>Strong and gusty thunderstorm winds produced damage in Wallace and Ashdown. One mobile home was overturned in Wallace. Many homes and businesses in Ashdown reported wind damage. Many trees and power lines were downed. Two tractor-trailer rigs were blown off the highway near Ashdown.</p>									
Sevier County	23	about 0200CST			0	0	5	-	Wind
<p>Strong thunderstorms produced damaging winds in Gillham. An unspecified number of homes and mobile homes received wind damage. Fences were torn down, and some poultry houses had some of the tin roofing removed. Some trees were knocked down.</p>									
Lafayette County	23	0225-0250CST			0	0	4	-	Wind
<p>Strong, thunderstorm winds caused scattered tree damage along the western sections of the county. Outbuildings were damaged by winds about 64 MPH south of Lewisville. Near Stamps, a barn and a chicken house were destroyed by the wind. One Lewisville business was damaged when a tree fell on its roof.</p>									
Hempstead County	23	0236CST			0	0	4	-	Wind
<p>One poultry house was destroyed and two more were damaged by thunderstorm gusts, 3 miles south of Springhill. About 13,000 week-old chickens were killed, mostly by drowning from the heavy downpour that accompanied the winds.</p>									
Arkansas County	23	about 0300CST			0	0	4	-	Wind
<p>Parts of the roof of a parochial school were blown down in Stuttgart. Winds were estimated at 50 mph. Some commercial signs and tree limbs were knocked down also.</p>									
Montgomery County	23	0305 CST			0	0	4	-	Wind
<p>Thunderstorm winds knocked out telephone, electrical, and cable television services to parts of the county. Trees were blown down in the Union Hill Community, east of Story, causing extensive damage to a mobile home.</p>									
Columbia County	23	0310-0340CST			0	0	4	-	Wind
<p>Scattered tree damage was reported over the southwest part of the county, north of Taylor. Magnolia reported 56 MPH winds. Some outbuildings were also damaged. One mobile home, at an unspecified location, was moved from its foundation and had its roof removed.</p>									
Garland County	23	0320CST			0	0	4	-	Wind
<p>Trees and power lines were knocked down along Highway 70, one and a half miles west of Peary. One barn was also destroyed.</p>									

# STORM DATA AND UNUSUAL WEATHER PHENOMENA

NOVEMBER 1983

PLACE	DATE	TIME - LOCAL STANDARD	LENGTH OF PATH (MILES)	WIDTH OF PATH (YARDS)	NO. OF PERSONS		ESTIMATED <sup>1</sup> DAMAGE		CHARACTER OF STORM
					KILLED	INJURED	PROPERTY	CROPS	

PLACE	DATE	TIME - LOCAL STANDARD	LENGTH OF PATH (MILES)	WIDTH OF PATH (YARDS)	NO. OF PERSONS		ESTIMATED <sup>1</sup> DAMAGE		CHARACTER OF STORM
					KILLED	INJURED	PROPERTY	CROPS	

## — ARKANSAS

Woodruff County	23	0330CST	7	50	0	0	5	-	Tornado (F1) A small tornado touched down 2 miles east of Augusta along Highway 64, moving northeast, and lifted 1 mile south of the county line along Highway 17. Damage was done to 1 home, 1 mobile home, 1 motor home, 1 camper trailer, 1 barn, 1 carport, 12 utility poles, and numerous power lines.
Dallas County	23	0340CST			0	0	4	-	Wind Several barns were destroyed by strong winds in Sparkman as thunderstorms moved through the area. One home had minor roof damage, with some trees being blown down.
Union County	23	about 0400CST			0	0	4	-	Wind A mobile home and one barn were blown down by thunderstorm gusts at Mt. Union, near El Dorado.
Jefferson County	23	0434CST			0	1	5	-	Wind A thunderstorm gust moved through Altheimer destroying one mobile home and injuring one occupant. Nine businesses along Front Street received moderate to major damage.
Poinsett County	23	0435CST	1	80	0	1	5	-	Tornado (F1) A small tornado touched down 1 mile south of the center of town in Harrisburg as it travelled northeast. It removed a large section of the roof at a greeting card factory, while damaging antennas and downing trees. Only one injury was reported with this event.
Poinsett County	23	0440CST	3	100	0	3	5	-	Tornado (F1) A second, small tornado touched down in Harrisburg, just east of where an earlier tornado lifted. It damaged several mobile homes, injuring 3 persons slightly. Damage was done to some homes, trees, and other structures.
Drew County	23	0500CST			0	0	3	-	Wind Gusty, thunderstorm winds damaged windows, awnings, trees, power lines, and a large smoke stack in Monticello.
Jackson County	23	about 0530CST			0	1	4	-	Wind One mobile home, one camper trailer, and two tool sheds were damaged by thunderstorm gusts at the Overcup Community, near Beedeville. One slight injury resulted.
Lee County	23	0545CST	0.9	60	0	0	5	-	Tornado (F1) A small tornado touched down a half mile northwest of the intersection of Highways 1 and 79, in Marianna, as it moved northeast. Extensive damage was done to one home and minor damage to a second one. One business, 2 automobiles, 1 travel trailer, and one garage/workshop were also damaged.
Crittenden County	23	about 0645CST			0	0	3	-	Wind Strong winds, accompanying thunderstorms, caused minor damage in West Memphis. Three utility poles were knocked down, as well as a few signs. Several trees were blown down.

## 4 CALIFORNIA, Northern

Northwest California and the coast south to Monterey Bay	10	0500-1700PST			0	6	5	4	Wind	There were winds of 30 to 50 mph recorded along the coast with gusts to 70 mph. Trees were blown down. Power lines were blown down, causing outages to 250,000 customers in the San Francisco Bay area alone. Crescent City reported that windows were broken because of wind. A tree fell on a house in Marin County. A boat capsized near Half Moon Bay because of wind.
Sierra Nevada	23	0400-1800PST			0	2	4	0	Snow	Moderate to heavy snow fell for 10 to 12 hours at many locations. Tahoe Valley received 15" in 6 hours. Many areas received totals in excess of 3". Strong, gusty winds brought visibilities to 1/8 of a mile in many locations.

## 4 CALIFORNIA, Southern

Mammoth Lakes Village, Mono County	10	?			0	0	?	0	High Wind	High winds up to 70 kts were reported in Mammoth Lakes Village during the evening hours, creating a power outage most of the night in that community.
Mammoth Lakes Airport, Mono County	13	?			0	0	?	0	High Wind	There was considerable wind damage at Mammoth Lakes Airport during the afternoon hours. Winds were clocked up to 85 knots. Damage was not specified.
Olancho, Inyo County	17	?			0	0	?	0	High Wind	Wind damage was reported from a spotter in the Olancho area during the late afternoon and evening hours. Damage was not specified.

## 5 COLORADO

Mountains, east	8-9	?			0	0	0	0	Snow	A storm brought about a foot of snow to many ski areas, including Vail, Aspen, Breckenridge, and Steamboat Springs. 4 to 8 inches also fell at many spots along the Front Range, with the heaviest amounts near the foothills. It was the first measurable snow of the season in the Denver area.
Front Range	13	0500-0800 MST			0	0	4	0	High winds	Winds gusted to around 60 mph near the foothills from Denver northward to the Wyoming border. There were scattered power outages and a few broken windows in the Denver area; in downtown Denver, about \$10,000 damage to awnings occurred at the Brown Palace Hotel.
Mountains, Eastern Foothills	17-18				0	0	0	0	Snow	Heavy snow buried areas in the mountains and eastern foothills. The greatest amounts recorded were 17 inches at Rye, southwest of Pueblo; and 14 inches at Divide and Woodland Park, west of Colorado Springs.
Mountains, Northeast Foothills	20-21				0	0	0	0	Snow	Another storm buried the mountains. 21 inches of snow fell in 48 hours at Winter Park; two feet fell in the southwestern town of Pagosa Springs. 18 inches fell in 24 hours at Cameron Pass, in the northern mountains. Some heavy snow also occurred in the northeastern foothills. 7 inches fell at Empire in just one and a half hours. Golden received 8 inches, with 5 at Boulder and 4 at Greeley.
Statewide	26-27				5	?	6	?	Blizzard	A massive snowstorm hit the southwestern mountains of Colorado on the 25th, covered the entire state on the 26th, then stalled and continued to buffet the mountains and east on the 27th. The storm produced howling winds and heavy snow that paralyzed Thanksgiving weekend transportation in eastern Colorado, and severely curtailed activities in other areas of the state as well. On the 27th, Denver Stapleton Airport closed, opening 24 hours later on the morning of the 28th. Interstate highways were closed to the northeast, east, and south of Denver, and most other roads on the Colorado plains were also blocked as winds gusting over 50 mph piled the snow in to drifts as high as 10 feet. In Denver, this storm was not as bad as last years infamous Christmas Eve blizzard. 21.5 inches of snow fell at Stapleton airport; in 37 hours; in last years storm, 23.8 inches buried the city in just 26 hours. Drifting was not a great problem in Denver during this years storm as wind speeds were mostly in the 15 to 25 mph range during the snowfall; last years storm was accompanied by 30 to 50 mph winds. Still, this years storm was severe enough to cause many stores and businesses to close, and several high school football games were postponed. However, farmers in eastern Colorado were not too badly hurt; only a few head of cattle were lost. To the east and northeast of Denver, this years storm was worse than last years'. At Limon, visibility was zero for over 24 hours, and the towns population doubled as around 2000 travelers took refuge from the storm. With all roads closed, towns like Limon, Sterling, Fort Morgan, and Burlington were cut off from the outside world on the 27th and into the 28th. Snowfall amounts from the storm were heaviest in the mountains and northeast. Most spots in these areas received 18 to 25 inches, although the cities of Fort Collins, Loveland, and Longmont had only 8 to 12 inches. In the Denver area, snow depths varied from 15 inches at Commerce City to 28 inches near Chatfield Reservoir in the southwest section of the metro area. Southeast Colorado and the western valleys received less snow. Only 5 inches fell at Colorado Springs, and just 1 inch at Pueblo, but both cities clocked winds gusts of 52 mph on the 26th. About 8 inches fell at Druango, but Grand Junction had only a 2 inch dusting. 3 to 5 inches fell at many spots in the San Luis Valley. Temperatures during the storm were mostly in the teens in eastern Colorado, so the snow was fairly dry. Water content of the snow was generally 1/4 to 1/2 inches in northeastern Colorado; Stapleton Airport measured 1.42 inches. The light weight of the snow precluded the problems associated with the heavy, wet snow of spring storms, and there were few power outages or downed trees.



# STORM DATA AND UNUSUAL WEATHER PHENOMENA

NOVEMBER 1983

PLACE	DATE	TIME - LOCAL STANDARD	LENGTH OF PATH (MILES)	WIDTH OF PATH (YARDS)	NO. OF PERSONS		ESTIMATED DAMAGE		CHARACTER OF STORM
					KILLED	INJURED	PROPERTY	CROPS	

PLACE	DATE	TIME - LOCAL STANDARD	LENGTH OF PATH (MILES)	WIDTH OF PATH (YARDS)	NO. OF PERSONS		ESTIMATED DAMAGE		CHARACTER OF STORM
					KILLED	INJURED	PROPERTY	CROPS	

**COLORADO**

Five deaths in Colorado were directly attributed to the storm. Two teenagers were injured when their car rolled over in the snow north of Denver on the 26th; stranded in the open, they froze to death. Other victims of car failures included a man in Elbert County and a man in Adams County 17 miles north of Byers; both froze after their vehicles failed. The fifth fatality was a man in Limon. He walked out of a truck stop, became disoriented, and froze to death in a snowbank only a few yards from safety. Temperatures remained cold for several days after the storm, and it took a few days for things to return to normal. Most schools in Northeastern Colorado, including those in Denver, were closed on Monday the 28th, and some schools in rural areas did not reopen until Wednesday or Thursday of that week. The cost of snow removal in Denver was estimated at 1.5 million dollars. While substantial, this is far below the 7 million dollars spent to clean up after last year's Christmas Eve blizzard. The heavy amounts of snow produced by this storm put the finishing touches on an extremely snowy November in Colorado. Berthoud Pass received 90 inches during the month, and 55 inches fell in the city of Aspen-at the base of the ski areas. Both figures were records for November. 103 inches fell at the Mary Jane ski area, and even at lower elevations Boulder totaled 43 inches.

N. Mtns, Northeast 29 0 0 0 0 Snow  
18 inches of new snow fell at Cameron Pass in the Northern Mountains, with 10 inches at Steamboat Springs. 2 to 5 inches dusted many spots in the northeastern foothills and plains, adding to the problems caused by the big storm a few days earlier.

**6 CONNECTICUT**

Southern Portion & Coastal Areas 10- 11 Afternoon-Morning 0 0 0 0 Gusty Winds and Heavy Rain  
Gusty winds accompanying a coastal storm knocked down tree limbs which resulted in power losses. Local flooding was caused by heavy rains.

Statewide 15 Afternoon & Evening 0 0 0 0 Gusty Winds and Heavy Rain  
Gusty winds downed tree limbs, knocking down wires and causing some power losses. Local flooding from heavy rains occurred in many parts of the state.

Northwest Corner 25 All day 0 0 0 0 Wet snow & wind  
Several thousand customers lost electric service as several inches of sticky snow brought down trees and tree limbs across electric lines. As much as 5 to 6 inches of snow fell in Salisbury.

Central and Coastal Area 25 All day Gusty Winds and Heavy Rain  
Scattered power losses and some local flooding resulted from the storm.

**7 DELAWARE**

Kent County 15 1830EST 0 0 3 0 Wind  
Late season thunderstorms associated with a strong cold front brought winds that caused power line damage in the Denny's Crossroads community just north of Dover.

**8 FLORIDA**

Sandestin Walton County 15 0920EST - - 0 6 3 - Thunderstorm wind  
Wind damaged a construction site and injured 6 workers.

Pensacola, Escambia County 20 0315EST 3 50 1 0 4 - Tornado(FL) Thunderstorm wind Lightning

Mobile homes were damaged, utility sheds destroyed, local flooding, power lines were downed, trees were damaged, and house fires were started by lightning. One man was killed when he touched an electrified fence, caused by downed power lines.

15 miles north of Panama City Beach, Bay County 20 0445EST - - 0 0 4 - Thunderstorm wind  
Six homes were damaged, power lines and trees downed.

**FLORIDA**

Hudson, Pasco County 20 1115EST - - 0 0 3 - Thunderstorm wind  
Roofs and signs were damaged.

Palatka, Putnam County 20 1315EST - - 0 0 4 - Thunderstorm wind

Two mobile homes were damaged.

Ormand Beach, Volusia County 20 1326EST 3 50 0 0 6 - Tornado(F2)  
Eighteen mobile homes were damaged, several carports were destroyed, forty cars were damaged by falling light poles, business roofs were damaged, trees downed. Hail was reported.

Rural, Flagler County 20 1330EST 3 50 0 0 5 - Tornado(F2)  
Two barns destroyed, recreation area pavillion destroyed.

Arrowhead, Citrus County 20 1400EST - - 0 0 4 - Thunderstorm wind

A mobile home was destroyed, a carport was destroyed. Trees were downed.

Cocoa Beach, Brevard County 20 1520EST - - 0 0 4 - Thunderstorm wind  
A mobile home was damaged.

8 miles east of Punta Gorda, Charlotte County 20 1530EST - - 0 0 4 - Thunderstorm wind  
Several mobile homes were damaged.

North Fort Myers, Lee County 20 1630EST - - 0 0 4 - Thunderstorm wind  
Several roofs, mobile homes and carports were damaged.

Newberry, Alachua County 24 AM - - 0 0 4 - Thunderstorm wind  
Uprooted trees damaged a home

Cross City, Dixie County 30 2000EST - - 0 0 3 - Thunderstorm wind  
A house was damaged by wind.

**9 GEORGIA**

Chatham County 20 1202EST-1230EST 0 0 4 0 Wind  
Gusty thunderstorm winds damaged 5 planes at the Savannah Airport; a door was blown off one hangar. In Savannah the winds damaged the roof of one home and the carport of another.

Coweta County 20 1345EST 5 100 0 0 4 0 Tornado (F1)  
A tornado touched down near Turin and moved northeast. The tornado destroyed a hay barn, damaged two cars, tore some roofing from 2 houses, and damaged the porches on two homes. Several trees and power lines were downed.

Fayette County 20 1410EST 0 0 0 0 Funnel Cloud  
A funnel cloud was sighted near Peachtree City.

Muscogee County 20 1450EST 1 100 0 2 5 0 Tornado (F1)  
A tornado touched down just north of the Columbus Airport. The tornado heavily damaged a barn, injuring two people in the barn. The roof of one home was destroyed and several other houses sustained moderate roof damage. Several trees and power lines were downed.

Forsyth County 20 1530EST 0 0 0 0 Hail  
Thunderstorms dropped hail as large as baseballs.

Macon County 20 1640EST 0 0 0 0 Hail  
Hail up to one inch in diameter fell near Montezuma.

Pulaski County 20 1750EST-1810EST 6 70 0 0 4 0 Tornado (F1)  
A tornado touched down in the northern part of the county, causing minor damage to 4 houses and several outbuildings. A few trees and power lines were downed.

Coffee County 24 0941EST 0 0 0 0 Funnel Cloud  
A funnel cloud was sighted about 2 miles east of Douglas.

# STORM DATA AND UNUSUAL WEATHER PHENOMENA

NOVEMBER 1983

PLACE	DATE	TIME - LOCAL STANDARD	LENGTH OF PATH (MILES)	WIDTH OF PATH (YARDS)	NO. OF PERSONS		ESTIMATED <sup>1</sup> DAMAGE		CHARACTER OF STORM
					KILLED	INJURED	PROPERTY	CROPS	

PLACE	DATE	TIME - LOCAL STANDARD	LENGTH OF PATH (MILES)	WIDTH OF PATH (YARDS)	NO. OF PERSONS		ESTIMATED <sup>1</sup> DAMAGE		CHARACTER OF STORM
					KILLED	INJURED	PROPERTY	CROPS	

10 IDAHO	NONE REPORTED								
11 ILLINOIS	NONE REPORTED								
12 INDIANA									
5W Rensselaer, Jasper County	20	0820EST			0	0	4	0	High Winds
			Winds estimated between 55 to 65 miles an hour destroyed one barn. A few trees were also snapped off.						
Lafayette, Tippecanoe County	20	0830EST			0	0	6	0	High Winds
			High winds estimated at 55 to 65 miles an hour caused extensive structural damage to the Tippecanoe Mall. Air conditioning units on the roof were torn loose and blown across the roof. The merchandise in these stores received further damage as heavy rains followed the winds. The high winds also caused structural damage to the roof of several apartment buildings and a motel. Scattered trees were uprooted and power lines downed in many places in and around Lafayette.						
Buffalo, White County	20	0845EST			0	0	2	0	High Winds
			High winds uprooted trees and downed powerlines in and around the town of Buffalo.						
13 IOWA									
Southwest Iowa	03	1030-1230CST			0	0	5	0	Thunderstorms and Winds
			Strong winds in thunderstorms caused power outages in Council Bluffs due to the downing of power lines. In Clarinda the second story wall of a church collapsed onto the sanctuary because of the wind. In Corning in Adams County, there was wind damage to the roofs of several hangars at the airport.						
Southwest, Central, and Northwest Iowa	22-23	Evening-Afternoon			0	0	5	0	Snow and Ice Storm
			A snowstorm dumped 2-6 inches of snow over a large part of Iowa after a period of freezing rain. The area of freezing rain extended further east than the snow which followed, and the western edges of the snow had no freezing rain beforehand. The result was extremely hazardous roads and highways, with a glaze of ice on the road underneath the snow. Power lines were downed by the ice and many communities lost power for hours - particularly in rural areas. Some localities were without electricity for 24 hours.						
Statewide	26-28	Evening-Morning			1	0	5	0	Snow and Ice Storm
			Another winter storm brought trouble to travelers trying to get home after the Thanksgiving weekend. On Saturday evening (the 26th) freezing rain began in the southwest and spread north and east into Iowa. All but the Southeast of Iowa had some freezing rain, which was followed by snow in Western third of Iowa on Sunday afternoon through Monday morning. The heavy snow fell in West Central, North-Central and North Central portions of the State, with a range of 6-16 inches falling in these areas. Most of the property damage sustained in this storm was due to ice accumulating on the power lines and poles, which, with the wind, caused lines to snap and power was interrupted. A couple of the larger examples of property damage are detailed below. The one death attributable to the storm was a Sioux City woman who died of hypothermia. She went out of her home into the cold and driving snow shortly before 11 P.M., Sunday night (the 27th) and was found about 15 minutes later. She died later at a hospital. Medication taken under Doctor's orders may have contributed to her succumbing to the cold.						
Buchanan County	27	1635 CST			0	0	6	0	Ice Storm
			A 2,000 foot transmitting tower owned by Television Station KWVL in Waterloo collapsed and was destroyed in the ice storm. Very thick ice had accumulated on the tower, and with some gusty winds caused the fall of the tower. The cost of replacing the tower was estimated at 3.5 million dollars - the value of the insurance coverage of the lost tower. The collapse of the tower was also responsible for the downing of a 375,000 volt power transmission line.						
Woodbury County	28	Morning			0	0	5	0	Snow Storm and Wind
			A warehouse owned by a steel scrap company collapsed due to the weight of a foot of heavy snow and the high winds on Monday. Built at a cost of \$250,000 in 1971, it could conservatively be estimated to be worth a half million dollars.						

14 KANSAS									
Lawrence, Douglas County	03	0930CST			1	0	0	0	Lightning
			Lightning struck and killed a 46 year old woman as she was jogging on the Kansas River Levee in Lawrence.						
Arcadia, Crawford County	03	1701CST			0	0	3	0	Hail
			A thunderstorm dropped 3/4 inch hail at Arcadia. Minor roof and tree damage resulted.						
Girard, Crawford County	03	1910CST			0	0	0	0	Hail
			A thunderstorm dropped 3/4 inch hail 8 miles south of Girard. No damage resulted.						
Fairview, Brown County	09	0610CST			0	0	5	0	Lightning
			Lightning set fire to a farm home 7 miles south of Fairview. Some furnishings were saved but the home was a total loss.						
Fredonia, Wilson County	18	2345CST			0	0	2	0	Wind
			Strong thunderstorm winds knocked over a sign in Fredonia.						
Walnut, Crawford County	19	0005CST			0	0	3	0	Wind
			A thunderstorm wind gust blew down a carport in Walnut.						
Rantoul, Franklin County	20	0015CST			0	2	4	0	Lightning
			Lightning set fire to a mobile home 1 mile south and 1/2 west of Rantoul. A man suffered burns over 50 percent of his body in the fire, and a 4 year old boy had minor injuries after the man tossed him out a window. The home and its contents were a total loss.						
Leavenworth, Douglas, Franklin, Osage and Coffey Counties	22	1230-1400CST			0	0	5	0	Wind, Hail, Funnel
			Heavy thunderstorms formed in a line from Atchison to John Redmond Reservoir in east central Kansas. The storms then moved rapidly east. A funnel was seen over Lawrence at 1243CST. Golfball size hail fell in Lawrence at 1243CST and between Quenemo and Melvern at 1256CST. Hailstones 3/4 inch in diameter dropped to the ground in Burlington at 1320CST and Ottawa at 1340CST.						
			The storms produced damaging winds in parts of Leavenworth County. Half of a small convenience store near Tonpanoxie was blown away about 1330CST, and several farm homes between Tonpanoxie and Basehor had some damage about that time. The wind speed was measured at 70 mph at Leavenworth at 1340CST. A storage building was demolished at the VA Center, and widespread minor tree and vehicle damage resulted in Leavenworth.						
Labette County	22	1620-1710CST			0	0	4	0	Hail, Wind
			Heavy thunderstorms moved across Labette County. The storms dropped 3/4 inch diameter hail at Edna at 1635CST and at Oswego at 1700CST. Strong wind gusts caused a good deal of damage at a farmstead near Angola about 1630CST.						
Western and Northern Kansas	26-28	Aftn-Mrgng			3	0	6	0	Blizzard and Ice Storm
			Blizzard or near-blizzard conditions hit most of western Kansas from the afternoon of the 26th until about sunrise on the 28th. Strong winds (30 to 45 mph) combined with heavy snowfall to drop visibility to less than 1/4 mile for more than 24 hours generally west of a line from Smith Center to Liberal. Worst conditions were observed the afternoon and evening of the 27th.						
			The storm dumped more than 6 inches of snow west of a line from Marysville to Liberal and more than a foot northwest of a line from Tribune to Wakeeney to Norton. Goodland measured the most with a total of 19 inches. The winds piled up huge drifts (some 6 and 8 feet) and closed nearly all roads, leaving several thousand holiday travelers stranded. Interstate 70 was closed west of Wakeeney from 1:00 pm the 27th until 2:00 pm the 28th.						
			Freezing rain also laid down a 70 mile wide coating of ice from just east of Dodge City to Marysville from the afternoon of the 26th into the morning of the 27th. More than half an inch of ice accumulated from Concordia east to around Seneca. Washington, Clay Center, Waterville, Blue Rapids, Marysville, Baileyville, Summerfield and Oketo were a few of the towns hit especially hard. Trees and power poles were broken and some spots were without electricity for nearly a week.						
			Three deaths resulted from the storm. Two Air Force Academy Cadets succumbed to carbon monoxide poisoning after their vehicle became stuck on I-70, 4 miles east of Goodland late the evening of the 27th. The highway was officially closed when they drove around a barricade at Colby about 1430CST. A 74 year old woman also died of exposure outside her home in Tribune the afternoon of the 27th.						

# STORM DATA AND UNUSUAL WEATHER PHENOMENA

NOVEMBER 1983

PLACE	DATE	TIME - LOCAL STANDARD	LENGTH OF PATH (MILES)	WIDTH OF PATH (YARDS)	NO. OF PERSONS		ESTIMATED DAMAGE		CHARACTER OF STORM
					KILLED	INJURED	PROPERTY	CROPS	

PLACE	DATE	TIME - LOCAL STANDARD	LENGTH OF PATH (MILES)	WIDTH OF PATH (YARDS)	NO. OF PERSONS		ESTIMATED DAMAGE		CHARACTER OF STORM
					KILLED	INJURED	PROPERTY	CROPS	

## 15 KENTUCKY

Harrison County	20	0530EST			0	0	2	0	Strong Winds
<p>Gusty winds blew trees down and caused power outages in several locations throughout Harrison County. A Plexiglass shelter over the Cynthiana High School press box was blown from its stand and intertwined in the Kentucky utility cables. As a result, 40 Hilltop customers were without electricity for 3 hours.</p>									
Scott County	20	ERLY MRNG			0	0	2	0	Strong Winds
<p>High winds peeled a tin roof off of a lodge building in Oxford.</p>									
Madison County	20	ERLY MRNG			0	0	1	0	High Winds
<p>Winds to 50 MPH downed several trees in Madison County.</p>									
Woodford County	20	ERLY MRNG			0	0	1	0	High Winds
<p>Several trees were leveled and large limbs were blown off others in Versailles impeding traffic and disrupting electrical service.</p>									
Jessamine County	20	0800EST			0	0	4	0	High Winds
<p>A four-bent machinery barn was downed by high winds one mile east of Nicholasville on Sulphur Well Road. An aluminum entrance awning was blown away at a Nicholasville business. A wooden gate protecting gasoline pumps at Winmore City Hall was knocked down. Limbs and branches littered yards and fields. Garbage and refuse containers and lids were strewn about properties. Porch and lawn furniture was toppled and relocated throughout Nicholasville.</p>									
Western and Central Kentucky	23	ERLY MRNG			0	0	2	0	Heavy Rain and Minor Flooding
<p>A combination of nearly 2 inches of morning rain and gutters clogged with autumn leaves caused minor street flooding throughout western and central Kentucky. Small creeks overflowed and low land flooding was widespread. Workers at Parker Popcorn Company in Murray (Calloway County), put up sandbags to protect the company against high waters from the Roseberry Branch Creek. Several morning rush hour traffic accidents, with no severe injuries, were accredited to rain slick highways in Louisville.</p>									

## 16 LOUISIANA

East Carroll Parish	14	2020CST	2	150			5		Tornado (F1)
<p>A tornado struck the northwest portion of Lake Providence. Three brick homes and several mobile homes were severely damaged by the storm. Two airplanes were also destroyed. Several injuries were reported, but all were minor.</p>									
West Carroll Parish	18	1650CST					4		SVR TSTM
<p>A severe thunderstorm produced minor wind damage to roofs and windows of several homes a mile southwest of Oak Grove. Tree damage was also reported.</p>									
East Carroll Parish	18	1730CST					4		SVR TSTM
<p>A severe thunderstorm struck north of Lake Providence causing wind damage to a few homes near the lake. In addition, numerous trees were uprooted.</p>									
Lincoln Parish	19	1320CST	1	100			3	5	Tornado (F2)
<p>A tornado struck just south of the town of Hico. One home was destroyed and several others heavily damaged. Three persons were reported to have sustained minor injuries. Also, numerous trees and power lines were downed.</p>									
Union Parish	19	1330CST	2	200			6		Tornado (F3)
<p>A tornado struck the town of Bernice destroying a house, three warehouses, and a service station. There were numerous other structures that received damaging ranging from major to minor. Numerous power lines and trees were also destroyed. There was wind damage between Duback and Bernice indicating very strong winds beneath the right rear portion of the storm before the tornado struck. This tornado was probably produced by the same storm which struck the town of Hico.</p>									
Winn Parish	19	1525CST					3		SVR TSTM
<p>Numerous trees were reportedly downed southeast of Winnfield to high winds accompanying a severe thunderstorm.</p>									

## LOUISIANA

Natchitoches Parish	19	1530CST					4		SVR TSTM
<p>High winds accompanying a severe thunderstorm caused damage in the town of Ashland. Numerous trees were blown down, two of which fell on houses.</p>									
Jackson Parish	19	1540CST					3		SVR TSTM
<p>A severe thunderstorm downed numerous trees southeast of Jonesboro in Jackson Parish.</p>									
Caldwell Parish	19	1545CST					3		SVR TSTM
<p>A severe thunderstorm downed numerous trees and power lines, some blocking roads to the southwest of Columbia.</p>									
Rapides Parish	19	1615CST	short	50			3		Tornado (F0)
<p>A small weak tornado was observed by the sheriff dept. to touch down about 5 miles west of Gardner. Damage was confined to farm outbuildings.</p>									
Richland and West Carroll Parishes	19	1630CST	8	100			5		SVR TSTM Tornado (F2)
<p>A severe thunderstorm moved northward across Richland and West Carroll Parishes causing property damage from west of Delhi to Warden to near Epps. The storm produced a tornado which developed two miles northwest of Delhi and dissipated at Warden. At least three homes were destroyed and several more sustained significant damage.</p>									
Tensas Parish	19	AFTN					4		SVR TSTM
<p>A severe thunderstorm moved across northern portion of the parish downing numerous power lines and trees.</p>									
Madison Parish	19	1700CST	.5	100			5		SVR TSTM Tornado (F3)
<p>A severe thunderstorm moved across Madison Parish causing considerable wind damage in Tallulah. As the storm moved across the town of Delta, it produced a strong but short lived tornado which destroyed two large power line towers constructed of steel.</p>									
Evangeline and St. Landry Parishes	19	1820CST					5		SVR TSTM
<p>A severe thunderstorm moved through the southern portions of Evangeline and western St. Landry parishes causing widespread wind damage. Twenty power poles were snapped off, numerous windows blown out and scattered areas of roof damage.</p>									
St. Martin Parish	19	1825CST					5		SVR TSTM
<p>A severe thunderstorm struck the town of Cecilia causing scattered areas of wind damage. A lumber yard was destroyed, two sets of lights at the football stadium were blown down, and numerous power lines were downed in several areas.</p>									
Ascension Parish	19	2030CST	?	?			7	4	Tornado (F1)
<p>A tornado of unknown size and path length struck two mobile homes injuring 7 persons.</p>									
East Carroll Parish	19	EVENING					1	4	SVR TSTM Lightning
<p>A severe thunderstorm struck Lake Providence destroying a mobile home and damaging one house. One man was killed by lightning from a barge to shore on the Mississippi River.</p>									
Rapides Parish	22	1215CST					5		SVR TSTM
<p>A severe thunderstorm struck the town of Boyce. Several mobile homes were severely damaged, trees fell on autos, and power lines were downed.</p>									
Caddo and Bossier Parishes	23	0225-0330CST					6		SVR TSTM
<p>A line of severe thunderstorms moved through the Shreveport-Bossier City area accompanied by winds measured at the MWS of 87 MPH. Widespread property damage resulted. Several planes were destroyed at both the Shreveport regional and downtown airports. There were numerous reports of broken windows in both residential and downtown office buildings. In addition, many trees and power lines were destroyed. Near Bossier City, two large brick homes suffered considerable damage with one having its roof lifted off. Numerous trees and power lines were also downed in the Bossier City area. Total damage was in excess of .5 million dollars.</p>									
Webster and Bienville Parishes	23	0320CST					5		SVR TSTM
<p>A severe thunderstorm struck an area from Ringold to Sibley in these two parishes. One mobile home was destroyed at Lake Bristineau and another mobile home and boathouse were destroyed at Plum Orchard Landing. Winds of 60-70 MPH were recorded with this severe thunderstorm. There was also considerable damage to trees and power lines.</p>									
Lincoln, Ouachita, Franklin, Caldwell, Jackson, and Winn Parishes	23	0350-0530CST					4		SVR TSTMS
<p>A line of severe thunderstorms moved through these parishes and was accompanied by winds of 50-60 MPH. There were scattered areas of tree and power line damage and a few mobile homes were slightly damaged. Rains of 2-3 inches also accompanied this line of storms.</p>									
Red River, Sabine, and Natchitoches Parishes	23	0320CST					4		SVR TSTMS
<p>A line of severe thunderstorms moved through these parishes causing areas of scattered tree and power line damage. Also, mobile homes near Coushatta were also damaged.</p>									

# STORM DATA AND UNUSUAL WEATHER PHENOMENA

NOVEMBER 1983

PLACE	DATE	TIME - LOCAL STANDARD	LENGTH OF PATH (MILES)	WIDTH OF PATH (YARDS)	NO. OF PERSONS		ESTIMATED DAMAGE		CHARACTER OF STORM
					KILLED	INJURED	PROPERTY	CROPS	

PLACE	DATE	TIME - LOCAL STANDARD	LENGTH OF PATH (MILES)	WIDTH OF PATH (YARDS)	NO. OF PERSONS		ESTIMATED DAMAGE		CHARACTER OF STORM
					KILLED	INJURED	PROPERTY	CROPS	

## LOUISIANA

Claiborne Parish	23	0320CST							3	SVR TSTM	A severe thunderstorm produced scattered areas of wind damage from Lake Claiborne to Haynesville. Winds estimated at 75 MPH unroofed several homes and numerous trees and power lines were downed.
Desoto Parish	23	0340CST							4	SVR TSTM	A severe thunderstorm moved across the parish with winds of 55-60 MPH. Power lines and trees were downed in scattered areas. Several mobile homes near Toledo Bend Lake were also damaged.
Union and Moorehouse Parishes	23	0400CST							3	SVR TSTMS	A line of severe thunderstorms moved through these two parishes accompanied by winds estimated near 70 MPH. Numerous trees were blown down.
Calcasieu Parish	23	0500-0530CST	1	100					5	SVR TSTM Tornado (F1)	A severe thunderstorm moved across the parish causing minor wind damage at Vinton and Lake Charles. To the northwest of Lake Charles, a tornado developed, striking several homes in the community of Moss Bluff. The damage path was 50-100 yards wide and a mile long. Two of the houses struck were severely damaged.
West Carroll and East Carroll Parishes	23	0545CST							4	SVR TSTMS Heavy Rain	A line of severe thunderstorms moved across these parishes and was accompanied by winds estimated at 60-70 MPH. Considerable damage to trees, power lines, and outbuildings resulted. Rains of 3-4 inches caused minor flooding of low areas.
Vermillion Parish	24	0200CST	?	?					5	Tornado (F1)	A small tornado struck the airport at Abbeville destroying several airplanes. In addition, other wind damage was reported to automobiles, trees, power lines, and several mobile homes.
Rapides Parish	27	0430CST							5	SVR TSTM High Wind	A severe thunderstorm struck Esler Regional Airport during the early morning hours. One building was destroyed, windows were blown out of 18 automobiles and a brick fence was destroyed. First reports indicated this was a tornado, but later evidence indicated it was probably a downburst with winds in excess of 100 MPH.

## 17 MAINE

West Coastal York, Cumberland, Sagadahoc, Lincoln, & Knox Counties	04-06	0600EST									0 0 6 0	Winds and Rain	A northeaster stalled off the coast and brought torrential rains, high winds and rough seas to the coastal plain from Kittery to Rockland. Wind gusts to 46 mph and 50 mph were recorded at Portland and Rockland respectively. Rainfalls of 4 to 5 inches were commonplace during the 48 hour deluge. Some storm totals were 6.20 inches at the Sanford Pumping Station, 5.31 at Bonny Eagle, and 4.13 at Brunswick. Of the 4.29 inches that fell at Portland, 3.93 inches came in a 24-hour period which broke the old 24-hour November record of 3.76 inches that came on the 25th and 26th of 1877. Many low-lying shore roads were flooded with several being washed out during Saturday morning's high tides which were running 1 to 2 feet above normal. Waves estimated from 8 to 14 feet high also caused some beach erosion and coastal property damage. According to the Coast Guard officer at Goat Island Light Station, waves were breaking halfway up the lighthouse tower and there's now a new channel through the island. Many small boats were capsized, swamped or torn from their moorings, with several being completely destroyed or heavily damaged. Many lobster traps were washed ashore all along the coast. Numerous power outages were reported due to fallen limbs and trees on powerlines but none lasted over 2 hours.
Statewide	24-26	1200EST									0 0 6 0	Heavy Rains and Strong Winds	A coastal front set up during Thanksgiving, while a low developed on the front south of New England. This low intensified rapidly as it traveled north-north-east, making landfall around the Penobscot Bay region Friday afternoon, reaching Anticosti Island Saturday morning. This was the fourth storm this month and the worst as far as damage was concerned. Heavy rains and strong winds affected every community in the state with one or a combination of flooded roads or basements, toppled and uprooted trees and cut-off electric and telephone services. The already battered coast also suffered more beach erosion and property damage from the rough seas. Rainfall totals from 2 to 4 inches were common with 5.40 inches recorded at Bangor being the most. Small rivers and streams overflowed their banks but only minor flooding was reported, and places susceptible to flooding were flooded more than usual. Over mountain sections the rain turned to snow with Eustis and Portage reporting 6 inches which appear to be the greatest amounts. The Bangor area suffered the most from street and basement flooding as well as road washouts. About a dozen roads in Bangor alone were flooded to dangerous levels or washed out. The rains also produced two landslides: a slide of sod and mud nearly blocked the full width of French Street in Bangor, and a slide of rocks and sand did substantial damage to a Main Street building in Wilton. Heavy rains loosened already waterlogged soils which made it even easier

## MAINE

Western	15										0 0 0 0	Snow, Sleet	for the strong winds to uproot a countless number of trees state-wide. In Greenville, 80 trees were toppled on Tomhegan Road alone. The downed trees impeded travel and cut off electric and telephone services throughout the state, with parts of Farmington, Greenville, Bowerbank, Rockwood, and Patten without power and/or telephone service for 48 hours or more. The gale force winds were out of the southeast Friday afternoon, shifting into the north and northwest as the storm went by. Peak gusts reported were 66 mph by the FAA at Augusta; and 69 mph by the Coast Guard at Jonesport; and 62 mph at Belfast. Gusts of 55 mph were common around the Moosehead Lake area and Aroostook County. In Augusta, a 60 by 120 foot warehouse, under construction, fell victim to the high winds. The peak gust of 52 mph at Portland toppled the City's 60-foot Christmas tree Friday afternoon. Trees also fell on and damaged many buildings and motor vehicles throughout the state. Along the coast, two lobster boats were sunk, one at Stonington and the other at Lubec. Two cottages on Hunnewell Beach in Phippsburg were completely destroyed and another was damaged by the pounding surf. Ogunquit Beach lost 300 feet of beach and 6,000 feet of protective fencing to the relentless seas. Numerous lobster traps were damaged and/or washed ashore.
---------	----	--	--	--	--	--	--	--	--	--	---------	-------------	---

## 18 MARYLAND and D.C.

Western	15										0 0 0 0	Snow, Sleet	Low pressure moved out of the Ohio Valley, bringing a mixture of snow, sleet and rain. In the Catoctin Mountains in Frederick County, 2 to 4 inches of snow fell during the pre-dawn hours, tapering off late in the day. Hazardous roads over Allegany County resulted in a number of highway accidents...with at least one fatality and several injuries.
Western	25	Morning									0 0 0 0	Snow	Rain changed to snow as a strong cold front moved into the mid-Atlantic states. Snowfall ranged from 2 to 4 inches over Garrett County, with between 1 and 2 inches over Allegany County and the northern portions of Washington, Frederick and Carroll Counties.
Chestertown	25										0 0 3 0	Wind	Strong winds, associated with a cold frontal system, caused local damage, mainly due to falling trees.

## 19 MASSACHUSETTS

Western Portion	15-16	Evening-Morning									0 0 0 0	Strong winds and Heavy Rains	Scattered power outages resulted from the strong winds and heavy rains across the area.
Statewide	25	All day									0 0 ? 0	Heavy rain/snow, flooding, gale winds	Over 3 inches of rain in much of the eastern part of the state caused considerable local flooding as the N.W.S. issued flood warnings for several eastern counties. Many roads were flooded and made impassable in poor drainage areas, and numerous basements were flooded. In western MA, the rain changed to heavy, wet snow with around 5 inches in Pittsfield and up to 10 inches in the high elevations. Power failures were common as the wet snow brought down tree limbs and electric wires. In the eastern portion of the state, gale force winds resulted in some power losses with peak wind gusts reaching 60 mph at Boston, and 71 mph at Blue Hill Observatory in Milton.
South Coastal Areas, Cape Cod	25	All day									0 0 ? 0	Coastal flooding, high tides and gale winds	A center of intense low pressure (28.8 inches) moved right over southeastern MA with southeast to south winds of gale force and gusts to 60 to 75 mph. Tides, two to three feet above already astronomically high levels, resulted in considerable flooding along south facing coastal areas from Cape Cod to New Bedford. In Fairhaven and Wareham, some residents were evacuated from their homes as rising waters covered some roadways. The hurricane barrier at New Bedford was closed as six foot waves pounded the shoreline. No injuries were reported. In Provincetown several autos were hit by flying debris and damaged as a result of the high winds. A portion of Route 6 was closed by blowing sand. The high tides along the bayshore of Eastham eroded up to 10 feet of beachfront properties.

# STORM DATA AND UNUSUAL WEATHER PHENOMENA

NOVEMBER 1983

PLACE	DATE	TIME - LOCAL STANDARD	LENGTH OF PATH (MILES)	WIDTH OF PATH (YARDS)	NO. OF PERSONS				ESTIMATED DAMAGE	CHARACTER OF STORM
					KILLED	INJURED	PROPERTY	CROPS		

PLACE	DATE	TIME - LOCAL STANDARD	LENGTH OF PATH (MILES)	WIDTH OF PATH (YARDS)	NO. OF PERSONS				ESTIMATED DAMAGE	CHARACTER OF STORM
					KILLED	INJURED	PROPERTY	CROPS		

## 20 MICHIGAN

Muskegon, Ottawa, and Kent Counties 20 1050-1125 EST 0 0 6 0 Wind

Strong cold front moved inland from Lake Michigan. Wind behind front exceeded 50 mph along shore from Montague to Zeeland and inland as far as the Grand Rapids Airport. Locally higher winds damaged 18 homes in a 4 block area of Jenison. Widely scattered power outages over the rest of area.

## 21 MINNESOTA

South 22 -- 0 0 0 0 Freezing Rain, Snow

A combination of freezing rain and sleet spread into southern Minnesota during the morning of November 22nd. Glaze formed on roads from the Iowa border north into portions of west central Minnesota and to the southern fringes of Minneapolis in southeast Minnesota. A weather related traffic accident in Chippewa County caused the death of a man. By mid-afternoon heavy snow was in progress in the southwest section of the state and a combination of snow and freezing precipitation continued east of a line from Jackson to Cambridge. By evening 5 to 8 inches of snow accumulated in the southwest corner of the state. Snow spread into northeast and east central Minnesota and freezing precipitation continued in the southeast. The weather caused a rash of fender benders but few serious accidents. Accumulation of ice on tree limbs and wires caused scattered power outages in the southeast. Communities located on ridges in the southeast sections of the state caught the brunt of the icing conditions.

East 23/24 -- 0 0 0 0 Heavy Snow

A combination of light snow and freezing precipitation changed over to snow and increased in intensity over eastern Minnesota during the morning of November 23rd. Freezing precipitation began turning to snow in Minneapolis and St. Paul around 0600 CST. The brunt of the storm hit Duluth at 0900 CST and did not let up in that city until 0200 CST on the morning of the 24th. Total snowfall in Duluth reached 20.7 inches. In Duluth, 16.6 inches of snow fell in a 24-hour period breaking the record 24-hour snowfall for Duluth in November. Snowfall of 10 inches or more fell in an area from just north of Faribault through the Twin Cities, Stillwater, Cambridge, Hinckley, Duluth and north along the higher terrain inland from Lake Superior. By mid-afternoon on November 23rd winds increased to 20-40 mph causing blowing and drifting snow. Road reports over most of central and eastern Minnesota indicated visibilities near zero. Thousands of Thanksgiving Day travelers were stranded on the state's highways. The wind and heavy snow knocked out power around Branch in Chisago County around 1710 CST. Many schools in the state were closed. Weather related traffic accidents were numerous but few were serious. Two weather related traffic deaths occurred, one in Eden Prairie and another in Litchfield. Many law enforcement offices had to use four wheel vehicles during the storm. Nine suffered heart attacks due to overexertion. By 0400 CST on November 24th the snow had tapered off to flurries in the northeast and north central sections of the state but winds continued to cause blowing and drifting snow over much of the state.

South and East 27-29 -- 0 0 0 0 Blizzard, Heavy Snow

Freezing rain moved into extreme southern Minnesota on the morning of November 27th and slowly spread north. By mid-afternoon a combination of freezing rain, sleet and snow was falling in the southern sections of the state and visibility began to be reduced as northeast winds increased. Through the evening blizzard conditions developed in the southwest, freezing rain persisted in the extreme southeast and snow spread north to Alexandria and St. Cloud. Snowfall by midnight totaled 6 to 12 inches in south central and southwest Minnesota. High winds hit northeast Minnesota late in the evening and were followed by heavy snow early on the morning of November 28th. Duluth started receiving heavy snow at 0400 CST. Thunder accompanied the heavy snow over central Minnesota early in the morning. Heavy snow continued throughout the morning of November 29th and into the afternoon before beginning to subside. Snowfall in excess of 10 inches fell throughout southwest and central Minnesota and into the Arrowhead Region. The greatest snowfall amount was 18 inches in Aitkin County. Snowfall in excess of 16 inches fell inland from Lake Superior and snowfall amounts of 14 inches were measured between Minneapolis and Faribault and also in the southwest, south of Tracy. There were few serious accidents around the state but many motorists were stranded and cars and trucks abandoned. Winds of 30 mph with gusts occasionally higher than 40 mph caused blowing and drifting snow particularly in the southwest where 3 to 5 ft. drifts blocked roads. Winds continued to cause blowing and drifting snow that hampered snow removal operations until the morning of November 29th. High winds and heavy snow in Duluth shut down many waterfront industries during the height of the Fall shipper's rush. Several vessels were forced to anchor inside the harbor on Lake Superior. Gusts in excess of 50 mph caused 15 ft. waves from the ship canal outward

## MINNESOTA

into Lake Superior. One weather related traffic accident occurred in Apple Valley on the evening of November 27th. Eight died from over exertion during the storm and a number of accidents and injuries occurred from falls and snow blowing incidents.

## 22 MISSISSIPPI

Wayne County 14 1715CST 0 7 5 0 Wind  
Two mobile homes were totally destroyed and another was damaged as severe thunderstorm winds struck the Mount Zion community. Seven people were treated for minor injuries.

Lexington Holmes County 19 1905CST 0 0 4 0 Wind  
Severe thunderstorm winds produced extensive roof damage to a business in downtown Lexington. Widespread minor wind damage was reported in much of Holmes County.

Lowndes County Caledonia 19 2200CST 0 0 4 0 Lightning  
Eighteen beef cattle were killed when the tree they were huddled under was struck by lightning near Caledonia.

Rolling Fork Sharkey County 20 1730CST 2.3 100 0 0 5 0 Tornado (F2)  
A strong tornado touched down in the southwest part of Rolling Fork. The tornado moved northeast for about 2 miles as it destroyed one house and damaged seven others. Four businesses reported major structural damage. The tornado lifted in the east part of town north of Highway 16. No injuries were reported.

LeFlore County 22 1240CST 0 0 4 0 Flash Flood  
Thunderstorm rains produced widespread street flooding along with flooding of five businesses in downtown Greenwood.

Rankin County 22 1800CST 2.2 75 0 3 4 0 Tornado (F1)  
A small tornado touched down in north Rankin County about three miles east of Pelahatchie Bay. The tornado moved northeast about two miles destroying two mobile homes, a barn and injuring three people.

Leake County 22 1910CST 0 4 4 0 Wind  
A woman and three children were injured slightly when their mobile home in Ofahoma was destroyed by strong thunderstorm winds. Two other mobile homes and a house also received wind damage.

Alcorn County 23 0200CST 0 0 4 0 Flash Flood  
Close to four inches of rain fell on Alcorn County from 8 PM on the 22nd to about sunrise on the 23rd. Flash flooding stalled cars, blocked many roads and flooded six businesses in Corinth.

Copiah County 23 0300CST 0 0 4 0 Wind  
High winds from a severe thunderstorm overturned an 18-wheel tractor and trailer on Interstate 55 near Martinsville. No injuries were reported.

Monroe County 23 1030CST 0 0 5 0 Funnel/Wind  
Winds from a severe thunderstorm blew down the screen of a drive-in theater, overturned a mobile home and destroyed another in central and north Monroe County. A 180 foot tower was downed in Amory. Funnel clouds were reported in Amory as the thunderstorms passed. A large cement block structure was destroyed in Okolona.

Lowndes County 23 2230CST 0 0 0 0 Hail  
One inch hail was reported two miles east of Columbus.

Lawrence County 27 1030CST 0 0 4 0 Wind  
High winds from a severe thunderstorm produced severe roof damage to one house and knocked a mobile home off of its blocks.

## 23 MISSOURI

Barton 3 1655CST 0 0 0 4 Large Hail  
Golf ball size hail reported 5 north of Liberal. Crop damage was reported.

Wright 3 1730CST 0 0 ? ? Large Hail  
Hail 1 1/2 to 2 inch diameter reported in Mountain Grove.

Barton 3 1737CST 0 0 0 ? Large Hail  
Golf ball size hail 2 miles south of Lamar.

Barton 3 1820CST 0 0 0 0 Large Hail  
Hail to 3/4 inch diameter at Golden City.

LaClede 3 1822CST 0 0 0 ? Large Hail  
Golf ball size hail 5 miles northwest of Leabon.



# STORM DATA AND UNUSUAL WEATHER PHENOMENA

NOVEMBER 1983

PLACE	DATE	TIME - LOCAL STANDARD	LENGTH OF PATH (MILES)	WIDTH OF PATH (YARDS)	NO. OF PERSONS		ESTIMATED <sup>1</sup> DAMAGE		CHARACTER OF STORM
					KILLED	INJURED	PROPERTY	CROPS	
<b>MISSOURI</b>									
Taney	18	0645CST			0	0	3	3	Large Hail and Damaging Wind
			Wind damage and 3/4 inch hail reported at Forsyth.						
Cape Girardeau	19	1645CST			0	0	2	0	Damaging Wind
			Thunderstorm winds estimated to 60 mph produced minor tree damage in northern Cape Girardeau County. A wind gust of 52 mph was recorded at the airport to the south of Cape Girardeau at 1627.						
Clinton	22	1418CST			0	0	?	?	Severe Thunderstorm
			A severe thunderstorm with winds to 70 mph was reported 10 miles southwest of Plattsburg.						
Chariton	22	1722CST			0	0	0	?	Large Hail
			Hail to golf ball size reported in Salisbury.						
<b>24 MONTANA</b> ————— NONE REPORTED									
<b>25 NEBRASKA</b>									
Phelps County	02	0600CST			0	0	2	3	Hail
			Half to one and one half inch hail caused minor crop damage along with minor damage to roofs and a few vehicles in and around Holdrege.						
Nuckolls County	02	0800CST			0	0	4	5	Hail
			Half to one inch hail cut a swath across the county damaging unharvested fall crops. Crop damage was particularly heavy in the Mt. Clare area. Some windows were broken in homes and vehicles around Lawrence. The hail collected in drifts and a grader was used to clear one state road.						
Panhandle, Southwest and North Central Nebraska	08 - 09	Night - Morning			0	0	3	0	Heavy Snow
			Areas of heavy snowfall were reported west of a line from Hartington to Beaver City. Some amounts included around 6 inches at Verdigre and Harrison and 4 inches at McCook, Ainsworth, Alliance and Chadron. Some limb and power line breakage was reported in the southwest.						
Panhandle Nebraska	13	Midday			0	0	3	0	High winds
			High winds buffeted the Panhandle with a peak gust of 67MPH recorded at Scottsbluff around 1200CST. Minor damage to tree limbs and utility lines was reported.						
Panhandle and North Central Nebraska	21 - 22	Morning - Morning			0	0	0	0	Heavy Snow
			Heavy snow fell in the northern Panhandle and north central. Heaviest snowfall was recorded in the northern Panhandle where Harrison reported 14 inches with 3 foot drifts and Chadron 9 inches. Other amounts included 5 inches at Ainsworth and 4 inches at Scottsbluff and Valentine.						
Southeast Nebraska	26 - 27	Afternoon - Morning			0	0	6	0	Freezing Rain
			Freezing rain caused extensive glazing and damage to utility lines and trees south of a line from Omaha to Red Cloud. Over 2000 families lost power. Conditions were particularly bad in Pawnee County where a 2 to 3 inch glaze caused snapped power poles, split cross arms and caused wires to drop to the ground. Numerous vehicle accidents reported.						
Entire State except Southeast corner	26 - 27	Late Evening - Morning			3	4	4	0	Blizzard and Heavy Snow
			Blizzard conditions and heavy snow impacted all of the state except the extreme southeast corner. Snowfall in excess of 10 inches was common in an area bounded on the west from Scottsbluff to Valentine and on the east from Superior to Blair. Pockets in excess of 20 inches were reported in the southern Panhandle, southwest, central and northeast Nebraska. Heavier snow included 27 inches at Sidney, 26 inches at Greeley, 22 inches at Grant, 21 inches at Oshkosh and 20 inches at Chappell and Laurel. During the height of the storm, winds from southwest through northeast Nebraska averaged 30 to 40MPH with gusts of 45 to 60MPH. Peak gusts of 62MPH were measured at Lexington and 58MPH at North Platte. Blowing and drifting snow reduced visibility to less than a sixteenth of a mile and the snow was pushed into 5 to 10 foot drifts. Thousands of Thanksgiving weekend travelers were stranded and took shelter in motels, public buildings and private homes as roads became impassable. Portions of I-80 along with other state roads were closed. One man was found dead of exposure 8 miles northeast of Oshkosh the morning of November 28th after he evidently fell from a tractor the afternoon of November 27th as he was caring for cattle. Two people died from carbon monoxide poisoning around Ainsworth when snow blocked their furnace vent. Four other people were also overcome by carbon monoxide 9 miles						
<b>NEBRASKA</b>									
<b>26 NEVADA</b>									
Las Vegas, Clark County	20	1230PST			0	0	0	0	Windstorm
			Winds gusted to 70 mph in Las Vegas proper, resulting in trees being uprooted and windows knocked out. A Cooperative Observer in Henderson reported a 96 mph gust.						
<b>27 NEW HAMPSHIRE</b>									
Coastal	04-05	1200EST			0	0	5	0	Wind and Rain
			Portsmouth received 5.23 inches of rain in about 48 hours, while at Concord, approximately 47 miles away, only 1.86 inches was recorded. The normal November rainfall is 4.90 inches. The coast was also buffeted by gale force winds, 39 mph gusts at Portsmouth, rough surf and high tides running 2 feet above normal. Only minor coastal flooding was reported with many small boats being swamped at their moorings by the torrential rains.						
<b>28 NEW JERSEY</b> ————— NONE REPORTED									
<b>29 NEW MEXICO</b>									
Chaves County	3	Morning			0	0	5	0	Flash Flood
			Heavy rains during the evening of November 2 caused a flash flood along Eagle Draw near Artesia, flooding homes and washing out roads with an estimated damage amount of \$250,000.						
<b>30 NEW YORK, Coastal</b> ————— NONE REPORTED									
<b>30 NEW YORK, Central</b>									
St. Lawrence County	4	AM			0	0	?	0	Winds
			High winds during the 4th forced the shut down of the St. Lawrence Seaway. The winds forced 28 ships to go to anchor.						
Delaware, Sullivan, Ulster, and Orange Counties	9				0	0	?	0	C° Drought
			The Delaware River Basin Commission (DRBC) declared a drought warning for the Delaware River. The 4 counties in New York, N.Y. City and other parts of the basin were affected. This action was the result of a lack of rainfall in the storage areas of the Delaware.						
Orange and Ulster Counties	11	1300EST			1	3	6	0	C° Wind/Rain
			Tornado like winds ripped through parts of Orange and Ulster Counties Friday. One woman was killed while trying to drive through a blinding downpour. Strong winds blew down a home in Pine Island and threw the home owner into a brick wall about 20 feet away. Further north and west the storm flipped over a mobile home and demolished it. The storm hit 3 small buildings and blew them into a 4th. Observers stated the building was lifted into the air and "just exploded". One observer said he saw clouds moving right along the ground. In Ulster County three homes were struck by lightning, resulting in small fires. No field investigation was done.						
Eastern Sections	25	Day			0	?	?	0	Snowstorm
			Parts of 2 post-Thanksgiving fronts converged over eastern New York. This resulted in snow up to 6-12 inches in some mountain areas, and rain mixed with snow to the south of Mohawk Valley.						

# STORM DATA AND UNUSUAL WEATHER PHENOMENA

NOVEMBER 1983

PLACE	DATE	TIME - LOCAL STANDARD	LENGTH OF PATH (MILES)	WIDTH OF PATH (YARDS)	NO. OF PERSONS				ESTIMATED DAMAGE	CHARACTER OF STORM
					KILLED	INJURED	PROPERTY	CROPS		
<b>30 NEW YORK, Western</b>										
Addison & Presho Area, Steuben County	10	Evening			0	0	3	0	Rain	Heavy rains caused tree limbs to fall. They shorted power lines. About 200 residents were without electricity for 3 hours.
Batavia, Genesee County; Warsaw and other parts of Wyoming County	21	Morning			0	0	3	0	Wind	Strong winds broke tree limbs and power lines. More than a thousand homes were without power for a few hours.
Lancaster, Depew, Cheektowaga, Lackawanna, and other parts of Erie County; parts of Genesee, Niagara, Cayuga, Oswego, and other Western and Central NY Counties	29-30				0	0	6	0	Snow and Lightning	A low pressure system caused cold air to sweep over warm waters of Lakes Erie and Ontario. Snow squalls formed and oscillated over areas close to the Lakes. The squalls were accompanied by thunder and lightning. Lancaster received 24 inches of snow. The Buffalo Airport recorded 11 inches. A few towns south of Buffalo declared snow emergencies. There were numerous vehicle accidents. Many area schools and businesses were forced to close. Roofs of a few buildings collapsed.  A lightning bolt struck a power line in Cheektowaga. About 2000 homes were without electricity for a few hours.
<b>31 NORTH CAROLINA</b>										
Coastal Regions	25	Early AM			1	1	?	0	Strong Winds	Gale-force winds associated with the early morning passage of a strong cold front downed trees and power-lines all along the coast, leaving 15,000 homes without electricity. Structural damage was generally light, limited to the Wright Brother's Memorial at Kill Devil Hills, where the replica of an airplane hanger was destroyed along with a Piper Cub airplane. Near the Ocracoke airstrip a camper was destroyed leaving its three occupants shaken but uninjured. Swells reaching 5' in the Pamlico Sound capsized a 36' trawler resulting in the death of a 22 year old Beaufort County man. A second man was treated for hypothermia after being rescued by the Coast Guard. Wind gusts reached 67 mph at Cape Hatteras, 60 mph at Atlantic Beach, and 50 mph at the Oak Island and Swansboro Coast Guard Stations.
<b>32 NORTH DAKOTA</b> ————— NONE REPORTED										
<b>33 OHIO</b> ————— NONE REPORTED										
<b>34 OKLAHOMA</b>										
Bethany, Oklahoma County	18	2020CST			0	0	?	?	Hail	Marble to golfball size hail fell.
Seward, Logan County	18	2030CST			0	0	?	?	Hail	Golf ball size hail fell 3 miles south of Seward.
Langston, Logan County	18	2110CST			0	0	?	?	Wind	Winds of 50 to 60 mph uprooted several trees, downed fences, and caused scattered roof damage.
Stillwater, Payne County	18	2130CST			0	0	?	?	Hail, Wind	Golfball size hail fell along with 50 mph winds.
Ninnekah, Grady County	18	2217CST			0	0	?	?	Hail	3/4 inch hail fell.
Alex, Grady County	18	2225CST			0	0	?	?	Wind	Winds of 55 mph occurred with no significant damage.
Norman, Cleveland County	18	2250CST short	narrow		0	0	3	0	Tornado(F1)	A tornado touched down briefly in southern sections of Norman overturning two automobiles and uprooting several large trees. Damage was estimated at \$4500.00.
Choctaw, Oklahoma County	18	2312CST			0	0	?	0	Wind	Winds of 70 mph occurred 4 miles south of Choctaw.
<b>— OKLAHOMA</b>										
Shamrock, Creek County	19	0005CST			0	0	?	?	Hail	Hail up to 1 inch fell near Shamrock.
Sapulpa, Creek County	19	early morning			0	0	3	0	Lightning	Lightning caused an oil tank to burn with \$3,000 damages.
Lone Grove, Carter County	19	0047CST			0	0	?	?	Hail	Hail up to golfball size fell.
Ardmore, Carter County	19	0140CST			0	0	4	0	Lightning	Lightning caused a fire in an apartment building with damages estimated at \$6,000.
Calvin, Hughes County	19	0150CST			0	0	?	?	Hail	Marble to golfball size hail fell.
Ada, Pontotoc County	19	early/morning			0	0	4	0	Lightning	Lightning caused a house to burn with damages set at \$43,000.
Perkins, Payne County	22	1223CST			0	0	?	?	Hail	One inch hail fell.
Ingalls, Payne County	22	1230CST			0	0	?	?	Hail	3/4 inch hail fell
Cushing, Payne County	22	1248CST			0	0	?	?	Hail	3/4 inch hail fell.
Oklahoma City, Oklahoma County	22	1300CST			0	0	?	?	Hail	One inch hail fell.
Moore, Cleveland County	22	1303CST			0	0	?	?	Hail	One inch hail fell.
Midwest City, Oklahoma County	22	1315-1335CST			0	0	6	0	Hail, Wind	Hail up to 2 inch size along with strong winds damaged 17-18 thousand autos and 22 to 25 thousand houses. Damages are estimated at 4 and 1/2 million dollars.
Purcell, McClain County	22	1410CST			0	0	?	?	Hail	7/8 inch hail fell 2 miles south of Purcell.
Lexington, Cleveland County	22	1415CST			0	0	?	?	Hail	3/4 inch hail fell.
McCloud, Pottawatomie County	22	1435CST			0	0	?	?	Hail	One inch hail fell.
Soper, Choctaw County	22	1438CST	1	100	0	0	4	0	Tornado(F2)	A tornado touched down 3 miles northeast of Soper causing damage to two barns and several houses. Damage estimates were set at \$20,000.
Stroud, Lincoln County	22	1439CST			0	0	?	?	Hail	Golfball size hail fell 10 miles north of Stroud.
Westport, Pawnee County	22	1510CST			0	0	?	?	Hail	One inch size hail fell.
Clayton, Pushmataha County	22	1520CST			0	0	?	?	Hail	3/4 inch size hail fell.
Skiatook, Osage County	22	1531CST			0	0	?	?	Hail	Golfball size hail fell just west of Skiatook.
Nashoba, Pushmataha County	22	1535CST	2	100	0	0	5	?	Tornado(F2)	A tornado touched down 3 miles west of Nashoba damaging several houses and destroying one house. Damage was set at \$70,000.
Farris, Atoka County	22	1545CST			0	0	?	?	Hail	3/4 inch size hail fell.

# STORM DATA AND UNUSUAL WEATHER PHENOMENA

NOVEMBER 1983

PLACE	DATE	TIME - LOCAL STANDARD	LENGTH OF PATH (MILES)	WIDTH OF PATH (YARDS)	NO. OF PERSONS		ESTIMATED DAMAGE		CHARACTER OF STORM
					KILLED	INJURED	PROPERTY	CROPS	

PLACE	DATE	TIME - LOCAL STANDARD	LENGTH OF PATH (MILES)	WIDTH OF PATH (YARDS)	NO. OF PERSONS		ESTIMATED DAMAGE		CHARACTER OF STORM
					KILLED	INJURED	PROPERTY	CROPS	

## OKLAHOMA

Moyers, Pushmataha County	22	1548CST			0	0	?	?	Hail
Pingpong ball size hail fell.									
Darwin, Pushmataha County	22	1550CST			0	0	?	?	Hail
1 1/4 inch size hail fell just south of Darwin.									
Albion, Pushmataha County	22	1600CST	3	100	0	3	6	?	Tornado(F3)
A tornado set down 1 mile southwest of Albion and moved to the northeast across the town. Four mobile homes and five houses completely destroyed. Almost all buildings in town suffered some type of damage. Three people were injured in one of the mobile homes. Damage has been set at \$930,000.									
Coweta, Wagoner County	22	1615CST			0	0	?	?	Hail
Baseball size hail fell 8 miles east of Coweta.									
Soper, Choctaw County	22	1630CST			0	0	?	?	Hail
Hail up to pingpong ball size fell 6 miles northwest of Soper.									
Cromwell, Seminole County	22	1640CST			0	0	?	?	Hail, Wind, Funnel Cloud
Golfball size hail and 70 mph winds along with a large funnel cloud occurred 5 miles southwest of Cromwell.									
Summerfield, Wister and Poteau, LeFlore County	22	1640CST	16	100	0	6	6	?	Tornado(F3)
A tornado touched down 4 miles east southeast of Summerfield intermittently causing damage on a path through Wister and Poteau. Six people were injured at Poteau, but none seriously. Total damage was estimated at \$750,000 with \$500,000 of that occurring at Poteau. Quarter size hail also fell with the storm.									
Cromwell, Seminole County	22	1640CST			0	0	?	?	Hail
Golfball size hail fell covering the ground 3 miles north of Cromwell.									
Moyers, Pushmataha County	22	1645CST			0	0	?	?	Hail
One inch size hail fell.									
Sulphur, Murray County	22	1730CST			0	0	?	?	Hail
3/4 inch size hail fell.									
Reichert, Howe, Gilmore, LeFlore County	22	1740CST	19	100	0	0	5	?	Tornado(F3)
A tornado set down at Reichert and intermittently caused damage at Howe and Gilmore as it traveled northeast. Several mobile homes were destroyed and many houses were heavily damaged. Damage is estimated at \$250,000.									
Coweta, Wagoner County	22	1755CST	short narrow		0	0	?	?	Tornado(F0)
A tornado touched down briefly 5 miles east of Coweta.									
Sulphur, Murray County	22	1800CST			0	0	?	?	Hail
One inch hail fell at the Chickasaw Wildlife Refuge near Sulphur.									
Ada, Pontotoc County	22	1810CST			0	0	?	?	Hail
7/8 inch size hail fell just north and just south of Ada.									
Shady Grove, Pittsburg County	22	1920CST			0	0	?	?	Hail
Golfball size hail fell 5 miles north of McAlester.									
Eufaula, McIntosh County	22	1950CST	short narrow		0	0	?	?	Tornado(F1)
A tornado touched down briefly 1/4 mile north of Lake Eufaula dam causing damage to trees. 3/4 inch hail also fell with the storm.									
Lawton, Comanche County	22	2003CST			0	0	?	?	Hail
One inch size hail fell west and in the city of Lawton.									
Sapulpa, Creek County	26	1850CST			0	0	4	0	Lightning
Lightning set fire to an apartment complex causing \$10,000 damage.									

## 35 OREGON

Clatsop County	03				0	0	0	0	High Winds
Wind gusts to 45mph were reported at Clatsop Spit. The roof blew off of one Astoria house.									
Southern Oregon & Willamette Valley	10				0	1	4	0	High Winds
75mph winds occurred along the coast and up to 50mph in the Willamette Valley. Gusts up to 105mph were recorded at Cape Blanco near Port Orford. Wind flipped a grounded plane, downed power lines, restricted traffic, caused school closures, and overturned a meat rig on I-84. Damage was estimated in the tens of thousands (4).									
Coastal Strip & Northern Oregon	13				0	0	0	0	High Winds
Winds of 40mph inland and 60mph along the coast were reported. These caused only minor damage.									
Edgewater Terrace & North Bend	17				0	0	1	0	Lightning
Lightning in North Bend knocked out power to some residences for a short while. Only minor damage was reported. Lightning struck a tree and followed a water pipe into a house in Edgewater Terrace, shaking the residence but injuring no one.									
North Coast	19				0	0	1	0	High Winds
Seaside reported a gust to 82mph, while the peak gust at Clatsop Spit was 65mph. The wind disrupted electrical service and caused minor damage including a telephone booth that was blown over and smashed into a parked pickup truck. No injuries were reported.									
Western Oregon	24				0	0	0	0	High Winds
Winds gusted early on Thanksgiving Day. Gusts to 75mph were reported northwest of Portland, with frequent 50mph gusts throughout the Willamette Valley. Charleston boat basin at Coos Bay had gusts up to 80mph. Scattered electrical outages were the only reported damage.									

## 36 PENNSYLVANIA, Eastern - NONE REPORTED

## 36 PENNSYLVANIA, Western - NONE REPORTED

## 37 RHODE ISLAND

Statewide	15- Evening- 16 Morning				0	0	0	0	Heavy Rain and Gusty Winds
Scattered power outages and some local flooding was reported as a result of the storm.									

## 38 SOUTH CAROLINA - NONE REPORTED

## 39 SOUTH DAKOTA

Southeast Quarter of State	26- Late 26th 28 through Afternoon 28th				0	0	4	0	Blizzard
A weekend storm that began with light snow continued to gather strength, culminating into a blizzard and was accompanied by thunder and lightning during the evening hours on the 27th. The heaviest snowfall occurred southeast from Marshall County southsoutheast to Gregory County, with the heaviest snow falling as thunder snowshowers. Snow amounts ranged from 4 to 18 inches. Strong winds up to 50 mph created near zero visibilities and impossible driving conditions as numerous roads drifted shut with up to 8 foot drifts. Numerous accidents were a result of the poor conditions, with many people forced to stay overnight in their stranded vehicles. Airlines were forced to cancel all flights as airports were closed into midday on the 28th. Almost all schools and businesses were closed on the 28th and again on the 29th in many areas. In Vermillion, (Clay County) on the 28th, traffic was allowed only to snowmobiles. A three hour power outage, due to strong winds, occurred in Rosebud (Todd County) with knocked down power lines. In Canton, (Lincoln County) a building under construction had its walls and rafters downed by winds.									

# STORM DATA AND UNUSUAL WEATHER PHENOMENA

NOVEMBER 1983

PLACE	DATE	TIME - LOCAL STANDARD	LENGTH OF PATH (MILES)	WIDTH OF PATH (YARDS)	NO. OF PERSONS		ESTIMATED <sup>1</sup> DAMAGE		CHARACTER OF STORM
					KILLED	INJURED	PROPERTY	CROPS	
<b>40 TENNESSEE</b>									
Hohenwald, Lewis County	3 pm				3	?			Wind
A fall thunderstorm moved through Lewis County during the night causing some wind damage. Damage from the storm was not considered extensive, however, a car wash in Hohenwald lost a large section of its roof.									
Greeneville, Greene County	20 ?				4				High wind
High winds funneling off Greene Mountain damaged the Camp Creek Elementary School. Last March, high winds did similar damage to the school. In this incident, the wind ripped off part of the school roof over some classrooms creating additional damage inside the classrooms.									
Memphis, Shelby County	23 0650 est	2 80	0 0	5 0					Tornado (F1)
A tornado touched down in several spots as it skipped along a path which began at the southwest corner of the Memphis International Airport. It crossed the airport going northeast, damaged private planes and hangars at Memphis Aero (at corner of Winchester and Swinnea), damaged buildings and cars at the Federal Express complex on the northeast side of the airport and the IRS facility on Democrat Road, and dissipated in a wooded area after crossing Democrat Road. The tornado occurred within about 100 yards of the NWS wind measuring equipment, but the highest gust recorded was only 40 miles an hour.									
6 south of Waverly, Humphreys County	23 0930 est	1 75	0 0	4 0					Tornado (F1)
A small tornado damaged a house, a barn, a workshop, and trees and power poles about 6 miles south of Waverly. Some wind was also reported in McEwen where an awning from a mobile home was damaged together with a vehicle.									
<b>41 TEXAS, Northern</b>									
Tarrant County	19 0540CST-0605CST				0	0	?	?	Hail
3/4 inch hail fell in North Richland Hills at 0540CST, breaking several house windows, but otherwise doing little damage. At 0605CST, golf ball to baseball size hail fell briefly near Mansfield in southern Tarrant County. No damage was reported.									
Dallas County	19 0550CST-0655CST				0	0	?	?	Hail
Marble size hail was reported at 0550CST at Coppell, and at 0615 was covering the ground at Grand Prairie. During the next half hour, amateur spotters reported marble to 3/4" hail at various points in the county, with the largest being golf ball size hail at Seagoville at 0655CST.									
Ellis County	19 0640CST				0	0	?	?	Hail, Winds
3/4 inch hail and high winds caused minor property damage at Midlothian.									
Johnson County	19 0655CST				0	0	?	?	Hail
3/4 to 1 inch hail was reported several miles north of Grandview.									
Eureka, Navarro County	19 0730CST				0	0	4	?	Winds
High thunderstorm winds overturned a mobile home and damaged several outbuildings 3 miles west of Eureka.									
Denton County	22 1345CST				0	0	?	?	Wind, Hail
Thunderstorm winds, along with hail to half-dollar size, produced minor property damage at Lewisville.									
Eastern Half of North Texas	22- Late PM-23 Early AM								Tornado, High Winds
A squall line, stretching from Oklahoma to Central Texas, moved through the FTW-DAL area with winds of 40 to 50 MPH. As the line moved east, the thunderstorms intensified, with winds of 80 MPH common as it passed through the area. The hardest hit was Ennis in Ellis County, where a tornado touched down at the airport destroying a hangar and several aircraft before it moved east into town. Six people were injured, 1 seriously. Elsewhere, the high thunderstorm straight-line winds proved devastating on mobile homes. Scores of trailers were overturned, injuring at least 22 people, 1 seriously. Trees were uprooted and blown into homes, trailers and power lines. Thousands of customers were without electricity for most of the 23rd as crews worked to clear lines.									
<b>TEXAS, Northern</b>									
Bell County	22 2300CST				0	0	5	?	High Winds
Winds estimated at 80 MPH destroyed several buildings under construction in Killen.									
Ellis County	22 2300CST 2300CST Short				0 2 0 6	6 ? 6 ?			High Winds Tornado F2
At approximately 2300CST, a tornado touched down at the Ennis airport, destroying 5 aircraft and heavily damaging 6 more planes and two hangars. Moving east into town, the tornado destroyed four buildings, did extensive damage to five buildings and caused damage to numerous others. Three mobile homes were overturned with six persons injured, one seriously, before the tornado lifted. The school in town sustained over \$300,000 damage to its property. Several roofs were lost, windows were broken, and extensive water damage occurred. Elsewhere in the county, high winds destroyed an empty grain elevator valued at \$250,000 near Italy. A grocery store at Lake Bardwell was destroyed. Moving east into town, the tornado injured two and widespread damage from downed trees was reported. Dozens of barns and other out buildings were destroyed or heavily damaged by the straight-line winds.									
Kaufman County	22 2230CST				0	0	?	?	High Winds
Terrell Police reported scattered property damage from high winds. Awnings were downed, as well as trees, with roofs and windows damaged across the city.									
Franklin County	23 0100CST				0	0	4	?	High Winds
A path two to three miles wide and ten miles long was cut through the county south of Mt. Vernon by high winds. Winds estimated at 80 MPH damaged several homes, mainly confined to roofs and windows. 1.88 inches of rain fell in a short time as the line passed through the area.									
Van Zandt County	23 0025CST				0	6	5	?	High Winds
Four persons were injured in a mobile home when high winds turned the trailer over and crushed two vehicles near Van Zandt. Two more were injured in an overturned mobile home near Edgewood. An individual near Wills Point measured the winds at 80 MPH, with numerous reports of roof damage to buildings, as well as tree and power lines being downed.									
Anderson County	23 0030CST				0	2	5	?	High Winds
High winds overturned three mobile homes and injured two people in the Bethel Community. A hole had to be cut in the roof of the trailer to rescue a woman who was pinned under debris. Numerous roofs were damaged, with tree and power lines downed at Palestine.									
Smith County	23 0045CST				0	0	5	?	High Winds
A 5000 square foot building was destroyed by high winds 2 miles NE of Lindale. Numerous homes in the area sustained roof damage, and at least one vehicle was destroyed in Tyler by fallen trees.									
Henderson County	23 0045CST				0	0	5	?	High Winds
Several mobile homes were destroyed and numerous homes sustained damage from high winds in the Athens area. There were no reported injuries.									
Freestone County	23 0025CST				0	0	4	?	High Winds
A mobile home was overturned by high winds in Fairfield. There were no reported injuries.									
Wood County	23 0100CST				0	0	4	?	High Winds
High winds uprooted a tree into a house near Hawkins. There were no reported injuries.									
Titus County	23 0100CST				0	4	5	?	High Winds
High winds damaged an area 1/2 to 1 mile wide and nearly 6 miles long near Mt. Pleasant. Starting 3 miles north of the city, the line stretched east along the north side of I-30. The 70 MPH winds overturned several mobile homes, injuring 4.									
Camp, Morris Counties	23 0100CST-0130CST				0	0	5	?	Winds
Thunderstorm winds caused extensive property damage from Pittsburg in Camp County to Daingerfield in Morris County. Several trees were uprooted and blown into houses, and numerous houses sustained extensive roof damage.									

# STORM DATA AND UNUSUAL WEATHER PHENOMENA

NOVEMBER 1983

PLACE	DATE	TIME - LOCAL STANDARD	LENGTH OF PATH (MILES)	WIDTH OF PATH (YARDS)	NO. OF PERSONS		ESTIMATED DAMAGE		CHARACTER OF STORM
					KILLED	INJURED	PROPERTY	CROPS	
<b>— TEXAS, Northern</b>									
Upshur County	23	0100CST			0	0	5	?	High Winds
					One mobile home was destroyed and two houses heavily damaged when large trees were blown onto the structures near Gilmer. A 28x50 foot building was destroyed and a 30x40 foot building heavily damaged from the thunderstorm winds.				
Cherokee County	23	0100CST			0	1	5	?	High Winds
					One person was injured by flying glass after thunderstorm winds downed trees and broke windows in the Tequila community, 5 miles NE of Jacksonville. Numerous houses, barns, and out buildings were heavily damaged in the area.				
Gregg County	23	0115CST			0	3	5	?	Winds
					Thunderstorm winds overturned a mobile home and injured three people in the Easton Community.				
Marion, Harrison Counties	23	0115CST-0200CST			0	0	5	?	High Winds
					High wind damage was scattered throughout the two counties. Near Jefferson, in Marion County, four mobile homes were heavily damaged, but there were no injuries. Numerous trees were uprooted, with one nearly destroying a small church.				
					Five miles west of Marshall a large barn was destroyed and two others heavily damaged.				
Bowie County	23	0145CST			0	4	5	?	High Winds
					Four persons were injured at New Boston when their mobile home was overturned. The high winds also uprooted numerous trees in the town and caused over \$10,000 damage to city property in the New Boston City Park.				
					Numerous reports of damage to mobile homes and trees blown onto houses were received from around the county.				
Hunt County	26	1855CST			1	2	4	?	Winds
					Thunderstorm winds downed electric lines onto a highway near Greenville. A motorist, being unable to see the downed power lines in the dark and inclement weather, struck the power lines, flipping the car. His wife was killed in the accident, with the driver and his son receiving minor injuries.				
<b>41 TEXAS, Southern</b>									
Travis County	4	1520CST			0	0	0	0	Funnel
					A funnel was visible just north of the city of Austin for some five minutes.				
Bandera County	5	0635CST			0	0	?	?	Flash Flood
					An upper level disturbance moving eastward out of West Texas produced areas of very heavy thunderstorm activity over much of the Texas Hill Country. In a repeating sequence, heavy thunderstorms moved again and again along the same track across central Bandera County. Within one hour, nearly four inches of rain fell in the Medina Lake area. Flash flooding developed about 0635CST around the lake, trapping vehicles in flooded roads and low areas. The water began to recede about 0900 CST with flooding ending near 1000CST. No injuries were reported.				
Jackson County	5	1200CST			0	0	0	0	Funnel
					A small funnel was reported near Vanderbilt.				
Williamson County	5	1645CST			0	0	4	0	Hailstorm
					A strong thunderstorm moving to the east out of Travis County began to produce golfball-sized hail about 1645CST south of Georgetown, near Hutto. The hail was accompanied by wind gusts estimated at 40 mph. The hail occurrence was brief.				
Cameron and Willacy Counties	6	0930CST 0950CST 1050CST 1130CST	4	200	0	0	5	0	Tstm winds Tstm winds Tornado (F0) Tornado (F0)
					A series of short-lived severe storms struck the Rio Grande Valley between 0930CST and noon CST. The storms were moving to the east in association with a cold front oriented north-south through extreme South Texas. Several reports of damaging winds were received from Cameron and Willacy Counties, with the gusts estimated at near 50 mph. In general, damage was minor and involved roof damage, glass breakage and tree limbs knocked down. One building under construction in Mercedes was heavily damaged.				
					A small tornado was produced by the storms just northwest of the city of Brownsville near 1050CST. It was nearly 200 yards wide and tracked east-southeastward for an unusually long 4				
<b>— TEXAS, Southern</b>									
Cameron County	9	1500CST			0	0	0	0	Funnel
					A funnel was visible briefly near Arroyo City.				
Fort Bend and Wharton Counties	16	1900CST			0	0	5	5	Flash Flooding
					Isolated heavy thunderstorms over Wharton County produced general 3 to 4 inch rains, then drifted slowly eastward into Fort Bend County, producing similar rainfall. Local ponding was indicated between 1830CST and 1900CST but quickly turned into flash flooding within the following hour. Although numerous roads and low areas across the two-county area were under water from just after sunset to nearly midnight, no injuries were reported. Rainfall after 2100CST was generally light and made little contribution to the flooding already taking place.				
Matagorda County	17	0830CST			0	0	5	5	Flash Flooding
					The heavy rains from the previous night redeveloped southward into Matagorda County near 0400CST. By 0700CST, isolated roads and low areas were reported to be collecting water, and by 0830CST, flash flooding was occurring. Numerous roads and low areas remained flooded through noon CST.				
Brazos County	19	0910CST	1.1	100	0	5	6	4	Tornado (F2)
					Very heavy thunderstorms formed just after sunrise along a strong cold front moving eastward across central Texas. A tornado was produced by one of the storms near Allenfarm. It touched down on an old cotton plantation, injuring five persons and damaging and destroying several structures. Five homes, a small church and a barn were destroyed, while eight homes, a barn, and most vehicles on the farm were heavily damaged. At least eleven other structures, including a cotton gin, received minor damage.				
					A family living in one of the destroyed homes saw the tornado as it approached. All dropped immediately to the floor. The house was shaken violently as high winds from the storm struck first. After a few seconds, heavy rain hit the home, covering all windows with mud. Almost without delay, the tornado struck, tearing the house apart and shredding the area with broken pieces of glass, rocks and wood. Three members of the family were on the inside as the house collapsed. One was tossed on the ground outside and two were trapped in the collapsed structure. One reported seeing three trucks on the outside picked up and tossed in the air. Some of the injured reported hearing a sound like a "freight train" just before the tornado struck.				
Jefferson County	19	1310CST			0	0	4	0	Tstm winds
					A line of thunderstorms continued along a strong cold front as it moved across the remainder of Southeast Texas early in the afternoon of the 19th. Strong gusts were produced by the storms with gusts to 60 mph recorded at the Jefferson County Airport. No major damage was indicated.				
South Texas	22	1310CST-0700CST			0	0	7	6	Wind Storm
					A north-south aligned cold front entered the western edge of South Texas at Val Verde County near 1300CST, moving eastward through South Texas during the following afternoon and evening. Strong, non-convective winds were observed by scattered damage reports over most of the area from Del Rio to Benmont on the northern tier of South Texas cities southward to near a Laredo-Corpus Christi line. Northwest winds behind the front blew at 30 to 40 mph with isolated gusts as high as 70 mph. No major damage was reported, but widespread minor damage occurred to small outbuildings, fences, roofs and vegetation.				
Orange County	23	0455CST	.3	100	0	0	4	0	Tornado (F0)
					Strong thunderstorms continued along the cold front that produced widespread gusts to 40 and 50 mph in the Orange area as it passed through just before 0500CST. A small tornado developed near the city of West Orange just before 0400CST. It touched down and lifted three times in rapid succession, then disappeared. Persons in the immediate area of the tornado reported hearing a sound like a "freight train." It snapped two large oak trees in half, uprooted one tree and damaged several other trees.				
Harris County	30	1245CST			0	0	0	0	Funnels
					Two small funnels were briefly visible near Hobby airport.				
Calhoun County	30	1705CST			0	0	0	0	Funnel
					A funnel was visible briefly just north of Port Lavaca.				



# STORM DATA AND UNUSUAL WEATHER PHENOMENA

NOVEMBER 1983

PLACE	DATE	TIME - LOCAL STANDARD	LENGTH OF PATH (MILES)	WIDTH OF PATH (YARDS)	NO. OF PERSONS		ESTIMATED <sup>1</sup> DAMAGE		CHARACTER OF STORM
					KILLED	INJURED	PROPERTY	CROPS	
<b>TEXAS, Southern</b>									
Galveston County	30	1725CST 1725CST	.3 .3	40 40	0 0	0 0	0 0	0 0	Tornado (F0) Tornado (F0)
The Hitchcock Police Department reported two small tornadoes that touched down very briefly on the south side of the town of Hitchcock. They disappeared shortly after lifting. The tornadoes were moving to the northeast at 15 mph.									
<b>41 TEXAS, Western</b> ————— NONE REPORTED									
<b>42 UTAH</b> ————— NONE REPORTED									
<b>43 VERMONT</b>									
Entire State	16	AM			0	?	?	0	Snowstorm
Snow fell over the entire state with some areas receiving amounts in excess of 6 inches. The storm caused several auto mishaps which resulted in some injuries. Power lines were also downed.									
<b>44 VIRGINIA</b>									
Northern Shenandoah Valley	25	Early			0	0	0	0	Snow
Low pressure moved northeastward along a cold front, intensifying as it moved into southern New England. This resulted in the first heavy snow of the season over sections of the Blue Ridge Mountains above the 2000-foot level. Snow began during the pre-dawn hours and ended around noontime. Elsewhere over the northern portion of the state, amounts on an inch or less were recorded.									
Southeastern	25	Morning			0	0	5	0	Wind, Rain
Winds associated with a strong cold frontal system gusted to near 65 mph. Various damage reports were in connection with the winds, mainly. The heaviest loss occurred in the Ocean View section of Norfolk where a condominium, under construction, toppled over onto several parked automobiles at around 5 AM. The structure, worth nearly \$300,000 when completed, was a total loss. Elsewhere, a tree fell through the attic of a home in Virginia Beach, and scattered wind damage and local street flooding occurred in the city of Chesapeake.									
<b>45 WASHINGTON</b>									
King County	10	Morning			0	0	4	0	High Winds
A very intense low pressure system moved northward 300 miles offshore, but the strong pressure gradient caused high winds in parts of western Washington. There were widespread power outages due to falling trees which downed power lines. In the town of Maple Valley a 75 foot tall tree crashed into a home while the occupants slept. There were no injuries and damage to the home was estimated at \$40,000. Winds generally ranged from 40 to 60 mph in the Cascade foothills. Peak gusts to 80 mph were reported near the town of Enumclaw.									
Western Washington	24	0900 PST TO 1500 PST			0	1	6	0	High Winds
Low pressure deepened rapidly as it approached Washington and attained a central pressure of 972 mbs along the Washington Coast. As the low moved inland high winds affected the western half of the state. Wind gusts reached 60 mph in Seattle and Olympia. A peak gust near 80 mph was recorded at Hoquiam. Winds in excess of 40 mph lasted up to 4 hours in some places. Damage was estimated at a few million dollars. Most damage was from trees falling into homes, shattered windows and downed power lines. Planes were damaged when a hangar blew down at Toledo airport. There was one known injury. A 78 year old woman was injured near Tacoma when a tree fell and struck her. She suffered a broken shoulder and concussion.									
<b>46 WEST VIRGINIA</b>									
Ripley and Jackson County	20	Afternoon			0	0	3	0	High Wind
Winds of about 60 mph resulted in a 10 hour power outage, roof damage in Ripley, and other minor damage to property throughout Jackson County during the afternoon. A new roof was blown from an apartment building in Ripley. Cost of the roof was over \$4000. Other damage included power lines, a fence, and trees.									
<b>47 WISCONSIN</b>									
Extreme Northwest Wisconsin Counties	09-All Day Into 19 The Morning Hours				0	0	?	0	Snow
A snowstorm produced up to 8 inches of snow in the Lake Superior "Snowbelt" region of northwest Wisconsin.									
Northwest Wisconsin Counties	22-Afternoon Into 25 Early Morning Hours				0	0	?	0	Snow, Sleet, Freezing Rain Blowing Snow
The first major snowstorm of the season spread snow, sleet and freezing rain into northwest Wisconsin which eventually changed into all snow. A band of snow from 8 to 18 inches fell from Pierce county northward to Douglas county. Trees were downed and there were many reports of power outages. Many schools, roads, and businesses were closed.									
Northwest Half of State	27-Morning Hours Into 29 Morning Hours				0	0	?	0	Snow, Sleet, Freezing Rain Blowing Snow
The second major snowstorm of the season moved slowly through the state. Freezing rain and drizzle glazed many highways and caused numerous power outages in the northwest before changing to snow. A band of snow from 8 to 13 inches was deposited northwest of a line from Buffalo county to Vilas county.									
Lake Michigan Shoreline, Ozaukee County	27-Afternoon Into 28 Morning Hours				0	0	?	0	Wind
Strong east to southeast winds created high waves which produced holes in the Port Washington seawall as well as destroying a shed and damaging two boats in the harbor.									
<b>48 WYOMING</b>									
Central Wyoming	8 Day				0	0	0	0	Heavy snow
The first snowstorm of the season blanketed central Wyoming with a foot of snow. Numerous minor traffic accidents were reported from around the state with no serious road problems.									
East of Rawlins, Carbon County	13 Morning				0	8	0	0	High winds
Winds gusting up to 65 mph blew over a school bus traveling on Interstate 80 about 28 miles east of Rawlins.									
Central and Southwest Wyoming	21-22				0	0	?	0	Heavy snow
Up to 18 inches of snow fell in central Wyoming while blizzard conditions ravaged the southwest section of the state. Quite a few roads, including Interstate 80 in southwest Wyoming, were closed at times due to the storm.									
Southeast Wyoming	26 Day				0	0	?	0	Heavy snow
A winter storm dumping up to a foot and a half of snow ripped through southeast Wyoming, bringing strong winds and 30 below zero wind chills. Numerous highways, including Interstates 80 and 25 out of Cheyenne were closed at times.									
<b>49 ALASKA, Northern</b>									
Tanana Valley	02-03				0	0	4	?	Ice Jam Flood
The first half of October, 1983 in the central Tanana Valley was warmer than normal, and had well above normal precipitation. Due to the mild temperatures, the snowpack remained light (less than 6 inches.) The second half of the month turned sharply cooler, and had little snowfall. Rivers in the area were well above normal in mid October. The cold weather which followed was ideal for river ice production. An ice jam began forming on approximately Oct. 31 on the lower reaches of Salcha Slough, a sidestream of the Tanana River, about 33 miles southeast of Fairbanks. A brief period of milder temperatures resulted in increased river flow under the ice. This, along with the ice jam, caused flooding to begin on the lower stretch of Salcha Slough on the evening of Nov. 2, with the crest occurring at that time or early on the morning of Nov. 3. The water level is estimated to have come up 5-6 feet. 8 homes had flood damage. The water receded on the afternoon and evening of Nov. 3. A series of secondary crests, all lower than the first, followed on the morning of Nov. 4 and on the evening of Nov. 8. The water level returned to normal with colder weather on Nov. 10-11. Due to high ground water levels, wells and septic systems in the area were unuseable for several days. This episode was similar to, but a little more severe, than a flood which occurred in the same area on Nov. 5-6, 1978.									

# STORM DATA AND UNUSUAL WEATHER PHENOMENA

NOVEMBER 1983

PLACE	DATE	TIME - LOCAL STANDARD	LENGTH OF PATH (MILES)	WIDTH OF PATH (YARDS)	NO. OF PERSONS		ESTIMATED DAMAGE		CHARACTER OF STORM
					KILLED	INJURED	PROPERTY	CROPS	
<b>ALASKA, Northern</b>									
Northwest Alaska	20-21				0	0	?	0	Blizzard and High Winds
	<p>A large Pacific storm moved northeast, through the central Aleutians, during the early morning hours of Nov. 20, and reached a point between Nunivak Island and St. Matthew Island late that day. It remained nearly stationary and gradually weakened on Nov. 21. Cold air and high pressure remained entrenched over eastern Siberia. Whole gales blew over St. Matthew Island from the late evening hours of Nov. 19 through mid-day of Nov. 22. Storm force north winds, blizzard conditions, and chill factors to 35 below were reported at Gambell, on St. Lawrence Island, from 10AM Nov. 20 to 9PM Nov. 21. Blizzard conditions were reported on the western Seward Peninsula at Tin City and Port Clarence from the morning of Nov. 20 through the morning of Nov. 21. No damage was reported. Peak winds at Gambell were to 65 knots.</p>								
Northwest Coast	28				0	0	?	0	High Wind and Blizzard
	<p>An intense low pressure system moved north through the eastern Aleutians on the night of Nov. 27-28. It then moved west through the southern Bering Sea and weakened later on Nov. 28. Winds as high as 55 miles an hour hit eastern Norton Sound on the morning of Nov. 28. Some had gusts to 40 miles an hour. Due to the rain falling on an existing, well consolidated snowpack, roads at Nome were almost impassible on the 28th and 29th. Blizzard conditions occurred at Kotzebue for several hours on the afternoon of Nov. 28. The winds diminished throughout the area late on the afternoon of Nov. 28.</p>								
Eastern Arctic Coast	30				0	0	?	0	Blizzard
	<p>An Arctic front just south of the Arctic Coast strengthened on the night of Nov. 29-30, increasing an already strong pressure gradient over the Arctic Coast. Blizzard conditions occurred at Prudhoe Bay, Barter Island and Oliktok, on the eastern Arctic Coast, for most of the day Nov. 30. Local blizzard conditions occurred at Pt. Lay, on the western Arctic Coast, on the morning of Nov. 30. Peak winds on the eastern Arctic Coast were 50 miles an hour, with visibility down to 1/8 mile.</p>								
<b>49 ALASKA, Southern</b>									
South Coast	28-29				0	0	4	0	Heavy Rain
	<p>A strong storm in the Gulf of Alaska brought heavy rain, high winds and warm temperatures to the southern Kenai Peninsula on the 28th and 29th. Up to 3 and 1/2 inches of rain fell in the Homer area in 36 hours. The heavy rain combined with snow melt from the warm temperatures caused widespread stream flooding and mudslides. Many roads throughout the area were closed or blocked. In some areas wind gusts to 60 mph accompanied the rains.</p>								
<b>49 ALASKA, Southeastern</b>									
All Southeast Alaska	10				0	0	4	0	High Winds
	<p>A strong storm approached southeast Alaska throughout the 10th bringing winds to 80 mph in some of the ocean channels and to over 60 mph in the populated areas. Roof of mobile home that was ripped off in Ketchikan was worst damage report. Juneauites had a 3 hour power outage due to winds.</p>								
Ketchikan	29				0	0	4	0	Local Flooding
	<p>Heavy rains caused Ketchikan creek to overflow, flooding several area basements and eroding the creek bank threatening the city's centennial building.</p>								
<b>50 HAWAII ————— NONE REPORTED</b>									
<b>51 PUERTO RICO ————— NONE REPORTED</b>									
<b>52 VIRGIN ISLANDS</b>									
St. Croix, St. John	4	0430-2200AST			0	0	5	0	Heavy Rain, Flooding
	<p>An area of heavy showers and thunderstorms moved into the Virgin Islands area early on the morning of the 4th and continued through most of the day. The heaviest rain fell over the eastern half of St. Croix with reported 24-hour totals of up to 9.46 inches, and also over St. John, further to the north, where one station reported 8.44 inches. The most intense showers were reported in St. Croix where nearly five inches fell in two hours. Heavy road erosion occurred in both St. Croix and St. John, and minor damages occurred to several houses in Tide Village and Mon Bijou, St. Croix, when some small creeks overflowed in those sectors.</p>								
<b>53 PACIFIC ————— NONE REPORTED</b>									

# STORM SUMMARY

NOVEMBER 1983

STATE	TORNADOES					HAILSTORMS			WINDSTORMS				LIGHTNING			FLOODING				HEAVY SNOWSTORMS AND BLIZZARDS				# ICE STORMS				ALL OTHER		
	NUMBER	DAYS	DEATHS	INJURIES	DAMAGE	DEATHS	INJURIES	DAMAGE		DEATHS	INJURIES	DAMAGE		DEATHS	INJURIES	DAMAGE		DEATHS	INJURIES	DAMAGE		DEATHS	INJURIES	DAMAGE		DEATHS	INJURIES	DAMAGE		
								PROP. ERTY	CROPS			PROP. ERTY	CROPS			PROP. ERTY	CROPS			PROP. ERTY	CROPS			PROP. ERTY	CROPS			PROP. ERTY	CROPS	
Alabama	11	5		22	6				1		4					?			9		5									
Arizona																														
Arkansas	4	1		4	5			?	?		6	6	?	4	6															
California											6	5	4																	
Colorado											4								5		?	4	6	?						
Connecticut																														
Delaware											3																			
Florida	3	1			6				1		6	5			4															
Georgia	3	1		2	5						4																			
Idaho																														
Illinois																														
Indiana												7																		
Iowa											5								1		6					6				
Kansas								3			5		1	2	5				3		5				6					
Kentucky											4																			
Louisiana	9	4		10	6						6		1																	
Maine											6																			
Maryland & DC											6																			
Massachusetts											3																			
Michigan											?																			
Minnesota											6																			
Mississippi	2	2		3	5						11	5		4																
Missouri								3	4		3		2																	
Montana																														
Nebraska								4	5			3							3		4	4			6					
Nevada											?																			
New Hampshire											5																			
New Jersey											5																			
New Mexico																														
New York									1		3	6	CO		3						?	6						3		
North Carolina											1	1	?																	
North Dakota																														
Ohio																														
Oklahoma	8	2		9	6			6	?			?	?		5	?														
Oregon											1	4			2															
Pennsylvania																														
Rhode Island																														
South Carolina																														
South Dakota																														
Tennessee	2	1			5						4		?																	
Texas	7	5		11	6			4	?	1	24	7	6																	
Utah																														
Vermont																														
Virginia												5																		
Washington											1	6																		
West Virginia												3																		
Wisconsin													?																	
Wyoming											8																			
Alaska												4																		
Hawaii																														
Pacific																														
Puerto Rico																														
Virgin Islands																														

## REFERENCE NOTES

Storm damage categories are from 1 to 9 as follows:

- 1 Less than \$50
- 2 \$50 to \$500
- 3 \$500 to \$5,000
- 4 \$5,000 to \$50,000
- 5 \$50,000 to \$500,000
- 6 \$500,000 to \$5 Million
- 7 \$5 Million to \$50 Million
- 8 \$50 Million to \$500 Million
- 9 \$500 Million to \$5 Billion

- \* Miles instead of yards
- \*\* Yards instead of miles
- @ Includes heavy sleet storm
- # Freezing drizzle and freezing rain, commonly known as glaze
- ≠ Not received or incomplete
- o/c Under Estimated Damage, Property/Crops, indicates crop damage amount is included in the figure given

## Definition of Fujita Tornado Scale (F scale)

(F0) Gale tornado (40-72 mph): Light damage  
Some damage to chimneys; break branches off trees; push over shallow-rooted trees; damage sign boards.

(F1) Moderate tornado (73-112 mph): Moderate damage  
The lower limit (73 mph) is the beginning of hurricane wind speed; peel surface off roofs; mobile homes pushed off foundations or overturned; moving autos pushed off the roads.

(F2) Significant tornado (113-157 mph): Considerable damage  
Roofs torn off frame houses; mobile homes demolished; boxcars pushed over; large trees snapped or uprooted; light-object missiles generated.

(F3) Severe tornado (158-206 mph): Severe damage  
Roofs and some walls torn off well-constructed houses; trains overturned; most trees in forest uprooted; heavy cars lifted off ground and thrown.

(F4) Devastating tornado (207-260 mph): Devastating damage  
Well-constructed houses leveled; structure with weak foundation blown off some distance; cars thrown and large missiles generated.

(F5) Incredible tornado (261-318 mph): Incredible damage  
Strong frame houses lifted off foundations and carried considerable distance to disintegrate; automobile-sized missiles fly through the air in excess of 100 m; trees debarked; incredible phenomena will occur.

(F6-F12) (319 mph to Mach 1, the speed of sound):  
The maximum wind speeds of tornadoes are not expected to reach the F6 wind speeds.

---

(F0+F1) Weak Tornado  
(F2+F3) Strong Tornado  
(F4+F5) Violent Tornado

---

From J. Atmos. Sci., August 1981, p. 1517-1519



USCOMM-NOAA-ASHEVILLE, NC 1984-2500

DEPARTMENT OF COMMERCE  
NATIONAL OCEANIC AND ATMOSPHERIC ADMINISTRATION  
NATIONAL ENVIRONMENTAL SATELLITE, DATA, AND INFORMATION SERVICE  
NATIONAL CLIMATIC DATA CENTER  
FEDERAL BUILDING  
ASHEVILLE, N.C. 28801

POSTAGE AND FEES PAID  
U.S. DEPARTMENT OF COMMERCE

COM 210  
THIRD CLASS  
BULK RATE

