

STORM DATA



"I CERTIFY THAT THIS IS AN OFFICIAL PUBLICATION OF THE NATIONAL OCEANIC AND ATMOSPHERIC ADMINISTRATION AND IS COMPILED FROM INFORMATION RECEIVED AT THE NATIONAL CLIMATIC DATA CENTER, ASHEVILLE, N.C. 28801"

L. Ray Hoxit
ACTING DIRECTOR
NATIONAL CLIMATIC DATA CENTER

This publication is funded by the
National Oceanic and Atmospheric Administration and the Federal Emergency Management Agency

C O N T E N T S

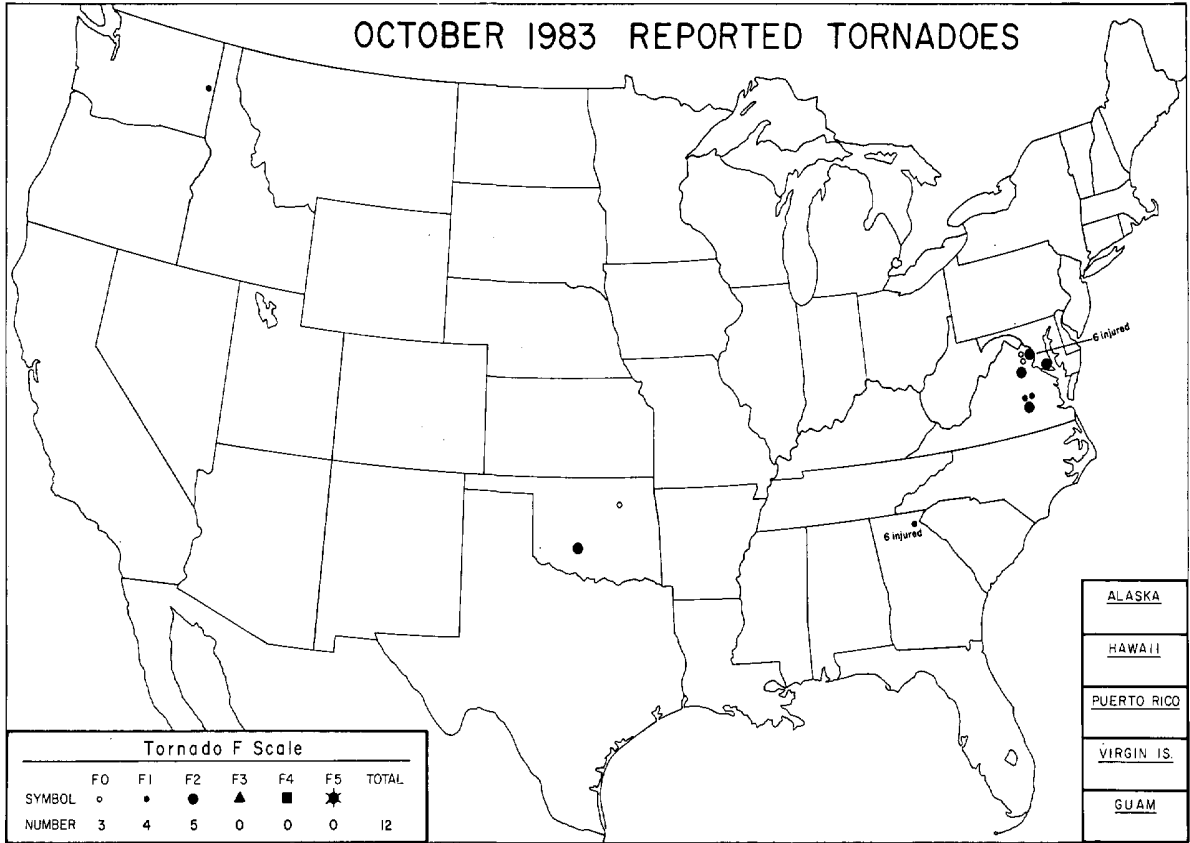
	<u>Page</u>
Outstanding Storms of the Month.....	3
Storm Data and Unusual Weather Phenomena.....	13
Storm Summary.....	22
Late Reports and Corrections.....	23
Reference Notes.....	25
"F" Scale Definitions.....	25

Cover: A farm near Guthrie, Oklahoma resembles an island as it is surrounded by flood water at midday on October 21, 1983 (see HEAVY RAINS and FLOODING, page 5). ---Photo by Lewis Jarrett, The Tulsa Tribune.

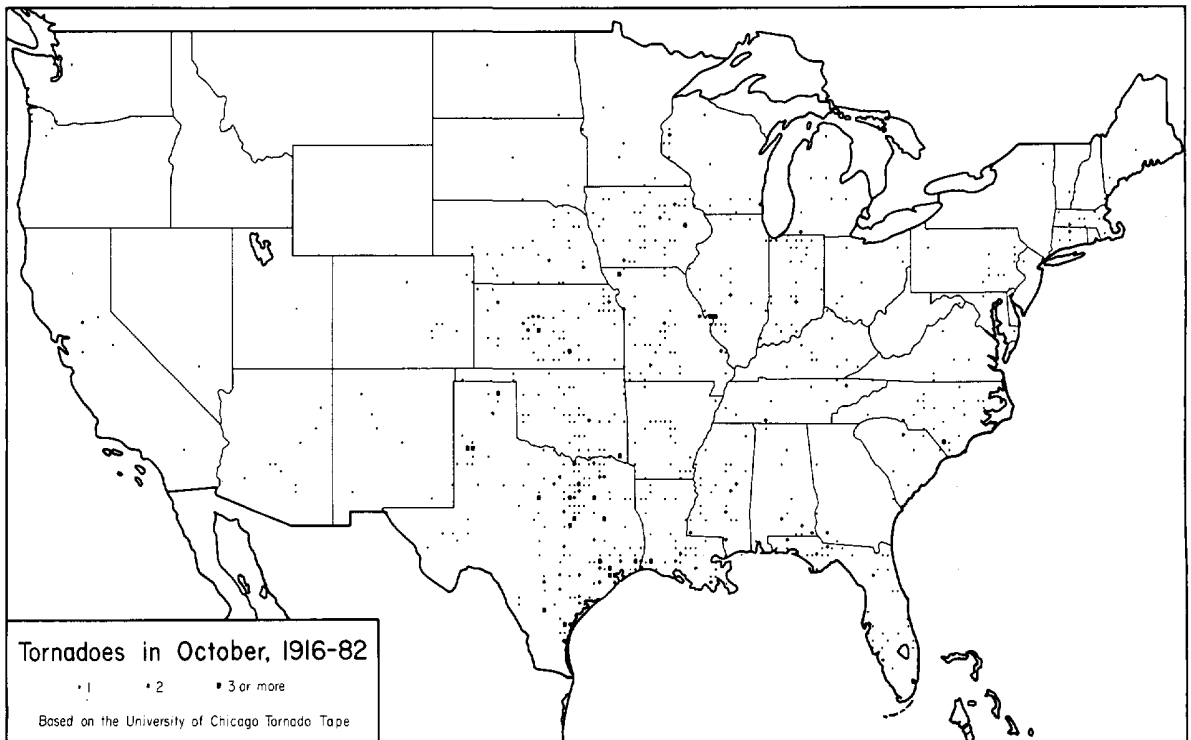
NOTE: The section on Outstanding Storms of the Month is prepared by Professor T. Theodore Fujita, editor, and Duane J. Stiegler, associate editor, University of Chicago. The narrative descriptions of Storms by State and Summaries of Hurricanes and Tropical Storms are prepared by the National Weather Service. The National Climatic Data Center compiles the statistics on deaths, injuries, and damage. This publication contains our best information on Storms, but, due to the difficulties inherent in collection of this type of data, it is not all-inclusive. Late reports and corrections will be carried quarterly.

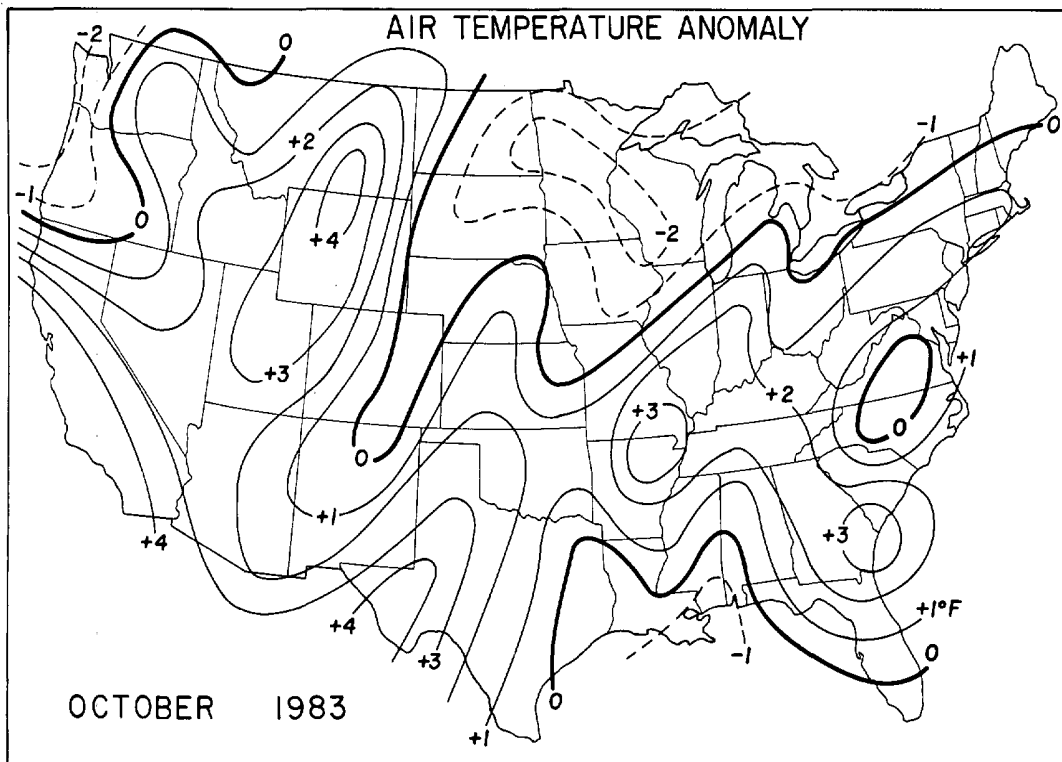
STORM DATA - (ISSN 0039-1972) is published monthly. Subscription, pricing, and ordering information is available from: Publications Section (E/CC413), The National Climatic Data Center, National Environmental Satellite, Data, and Information Service, NOAA, Federal Building, Asheville, NC 28801-2696.

OUTSTANDING STORMS OF THE MONTH



<ul style="list-style-type: none"> ● COMPLETE REPORT RECEIVED ○ PRELIMINARY REPORT RECEIVED ○ REPORT NOT RECEIVED <p>(N) northern (W) western (S) southern (C) central (E) eastern (O) coastal (SE) southeastern</p>	<table style="width: 100%; border-collapse: collapse;"> <tbody> <tr> <td>● 1AL</td><td>● 7DE</td><td>● 14KS</td><td>● 21MN</td><td>● 28NJ</td><td>● 33OH</td><td>● 39SD</td><td>● 44VA</td><td>● 49AK(SE)</td> </tr> <tr> <td>● 2AZ</td><td>● 8FL</td><td>● 15KY</td><td>● 22MS</td><td>● 29NM</td><td>● 34OK</td><td>● 40IN</td><td>● 45MA</td><td>● 50HI</td> </tr> <tr> <td>● 3AR</td><td>● 9GA</td><td>● 16LA</td><td>● 23MO</td><td>● 30NY(O)</td><td>● 35OR</td><td>● 41TX(N)</td><td>● 46WV</td><td>● 51PR</td> </tr> <tr> <td>● 4CA(N)</td><td>● 10ID</td><td>● 17ME</td><td>● 24MT</td><td>● 30NY(C)</td><td>● 36PA(E)</td><td>● 41TX(S)</td><td>● 47WI</td><td>● 52VI</td> </tr> <tr> <td>● 4CA(S)</td><td>● 11IL</td><td>● 18MD</td><td>● 25NE</td><td>● 30NY(W)</td><td>● 36PA(W)</td><td>● 41TX(W)</td><td>● 48WY</td><td>● 53PC</td> </tr> <tr> <td>● 5CO</td><td>● 12IN</td><td>● 19MA</td><td>● 26NV</td><td>● 31NC</td><td>● 37RI</td><td>● 42UT</td><td>● 49AK(N)</td><td></td> </tr> <tr> <td>● 6CT</td><td>● 13IA</td><td>● 20MI</td><td>● 27NH</td><td>● 32ND</td><td>● 38SC</td><td>● 43VT</td><td>● 49AK(S)</td><td></td> </tr> </tbody> </table>	● 1AL	● 7DE	● 14KS	● 21MN	● 28NJ	● 33OH	● 39SD	● 44VA	● 49AK(SE)	● 2AZ	● 8FL	● 15KY	● 22MS	● 29NM	● 34OK	● 40IN	● 45MA	● 50HI	● 3AR	● 9GA	● 16LA	● 23MO	● 30NY(O)	● 35OR	● 41TX(N)	● 46WV	● 51PR	● 4CA(N)	● 10ID	● 17ME	● 24MT	● 30NY(C)	● 36PA(E)	● 41TX(S)	● 47WI	● 52VI	● 4CA(S)	● 11IL	● 18MD	● 25NE	● 30NY(W)	● 36PA(W)	● 41TX(W)	● 48WY	● 53PC	● 5CO	● 12IN	● 19MA	● 26NV	● 31NC	● 37RI	● 42UT	● 49AK(N)		● 6CT	● 13IA	● 20MI	● 27NH	● 32ND	● 38SC	● 43VT	● 49AK(S)	
● 1AL	● 7DE	● 14KS	● 21MN	● 28NJ	● 33OH	● 39SD	● 44VA	● 49AK(SE)																																																								
● 2AZ	● 8FL	● 15KY	● 22MS	● 29NM	● 34OK	● 40IN	● 45MA	● 50HI																																																								
● 3AR	● 9GA	● 16LA	● 23MO	● 30NY(O)	● 35OR	● 41TX(N)	● 46WV	● 51PR																																																								
● 4CA(N)	● 10ID	● 17ME	● 24MT	● 30NY(C)	● 36PA(E)	● 41TX(S)	● 47WI	● 52VI																																																								
● 4CA(S)	● 11IL	● 18MD	● 25NE	● 30NY(W)	● 36PA(W)	● 41TX(W)	● 48WY	● 53PC																																																								
● 5CO	● 12IN	● 19MA	● 26NV	● 31NC	● 37RI	● 42UT	● 49AK(N)																																																									
● 6CT	● 13IA	● 20MI	● 27NH	● 32ND	● 38SC	● 43VT	● 49AK(S)																																																									

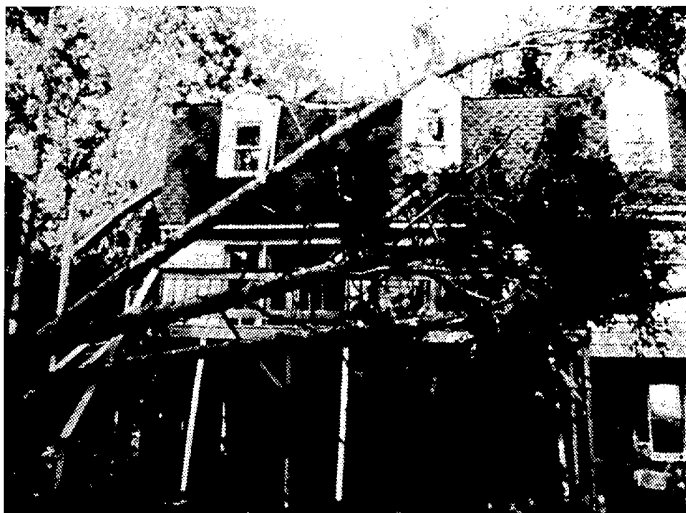




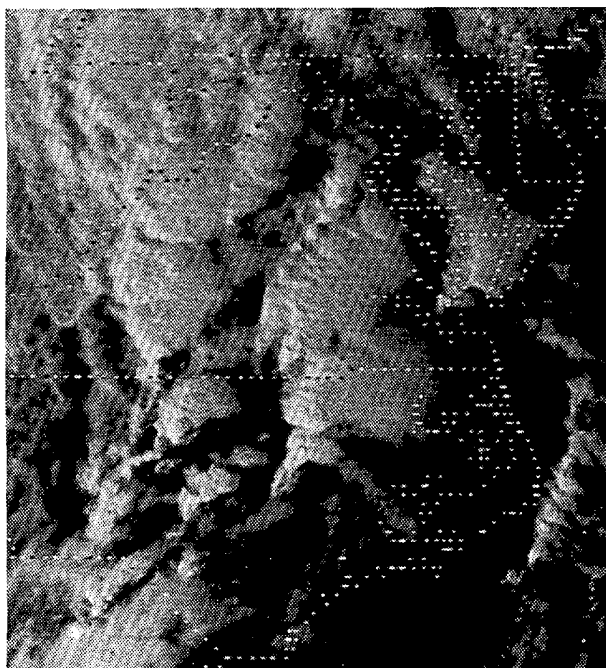
---Data base from NOAA/USDA Joint Agricultural Weather Facility.

1. TORNADOES in VIRGINIA and MARYLAND on October 13, 1983

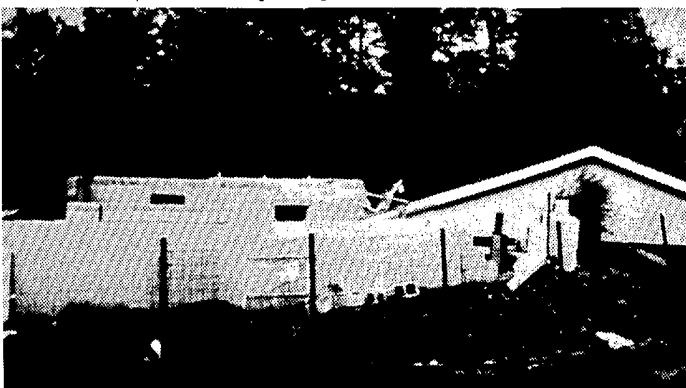
Of only 12 tornadoes nationwide during October, 8 occurred in Virginia and Maryland as a single outbreak between 1600 and 2000 EST on October 13th. 7 of the tornadoes occurred in Virginia (3 F2, 2 F1 and 2 F0) and the last, an F2, was in Maryland (see Tornado Map, page 3).



A house (above) which suffered damage from falling trees and a garage (below) which had its roof lifted off by a tornado at Lake of the Woods in Orange County, Virginia.
---Both photos by Roy Britt.

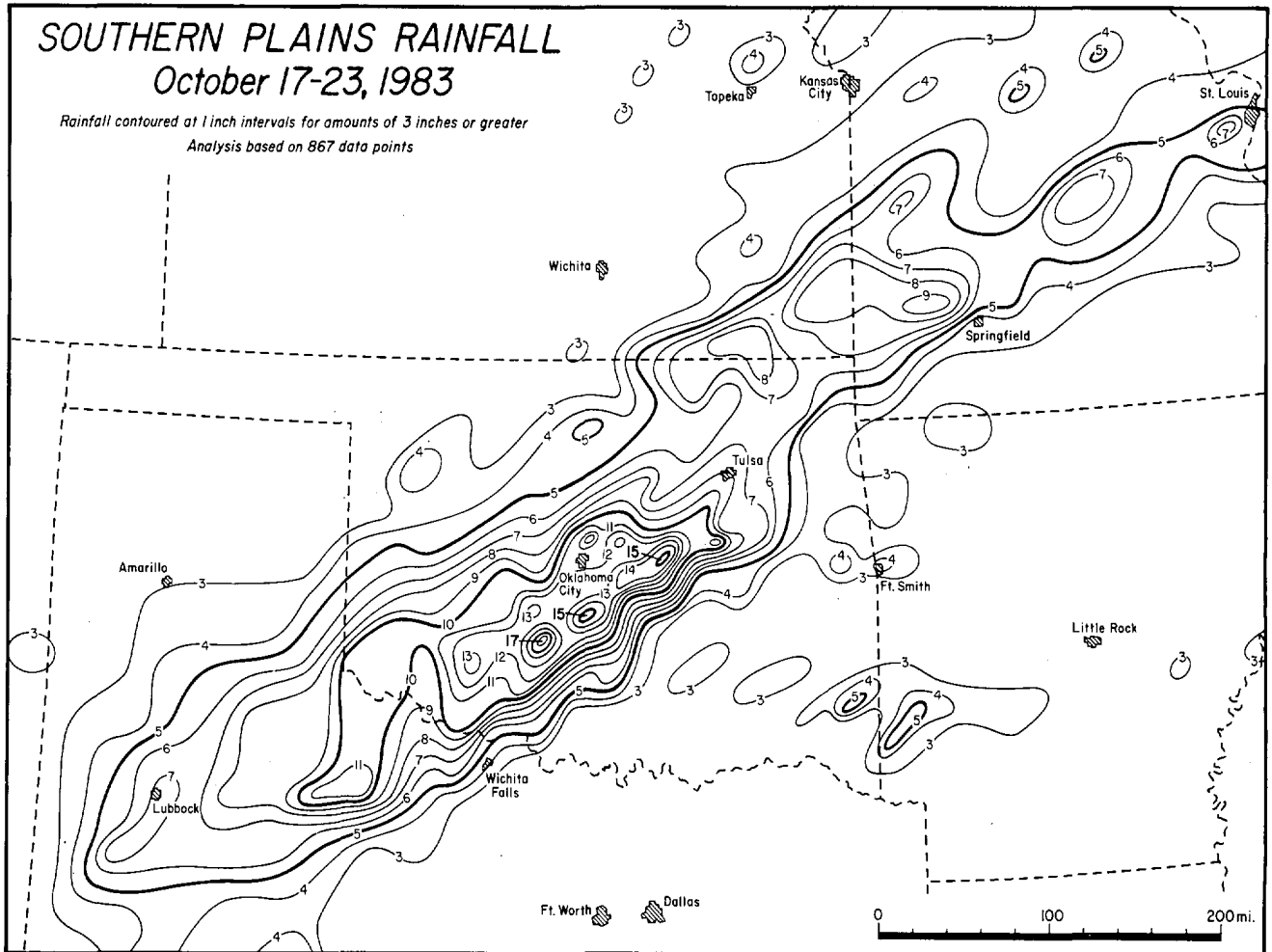


Visible GOES East satellite photo shows the developing tornadic storms over Virginia at 1530 EST (2030 GMT) on October 13th. ---Photo from NESDIS.

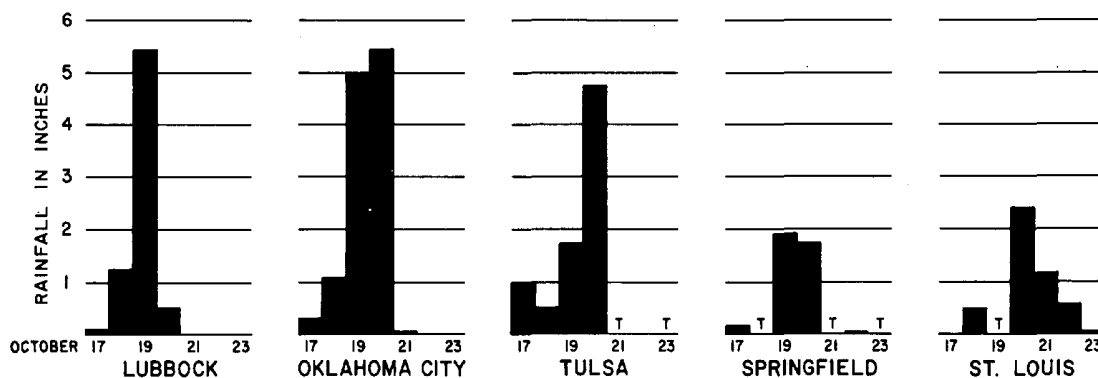


2. HEAVY RAIN and FLOODING in the SOUTHERN PLAINS on October 17-23, 1983

From October 17th to the 23rd, a major rain and flood event took place in the Southern Plains states when the remnants of Hurricane TICO moved northeast from Mexico into the midsection of the U.S. (see Hurricane map, top of page 12). Over 10 inches of rain fell in central and southwestern Oklahoma and a small portion of Texas, with a maximum of 17 inches having fallen just south of Chickasha, OK. Although there was flash flooding and most areas became quite soggy, massive flooding was, for the most part, prevented by flood control reservoirs which were drained by a summer-long drought.

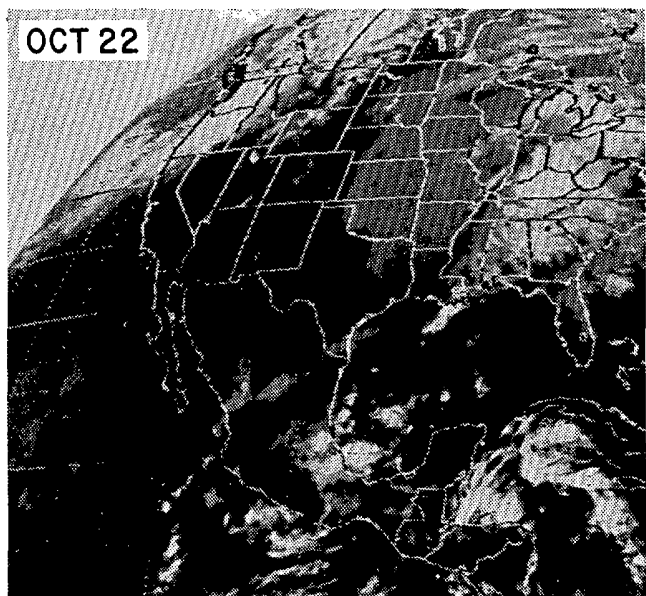
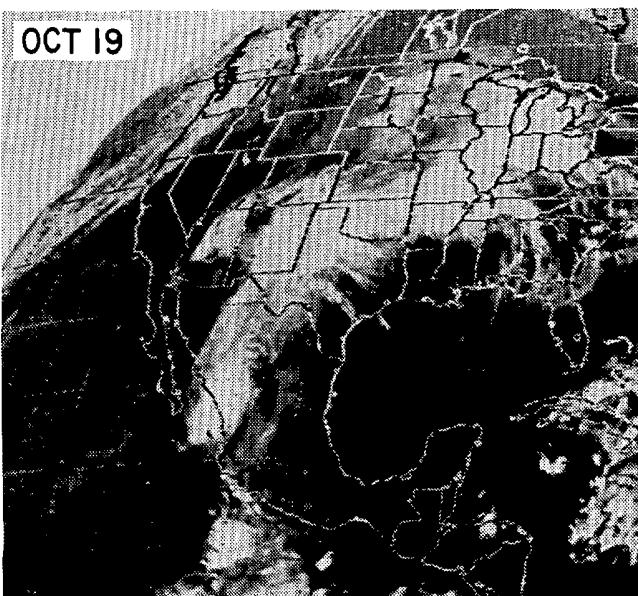
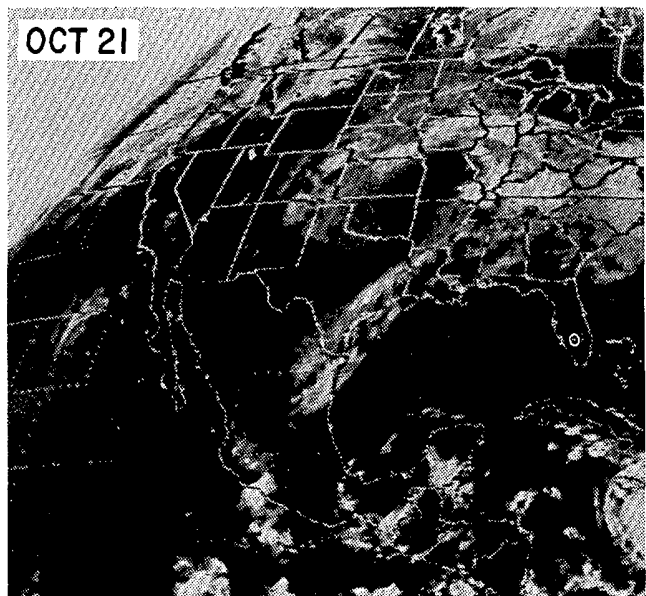
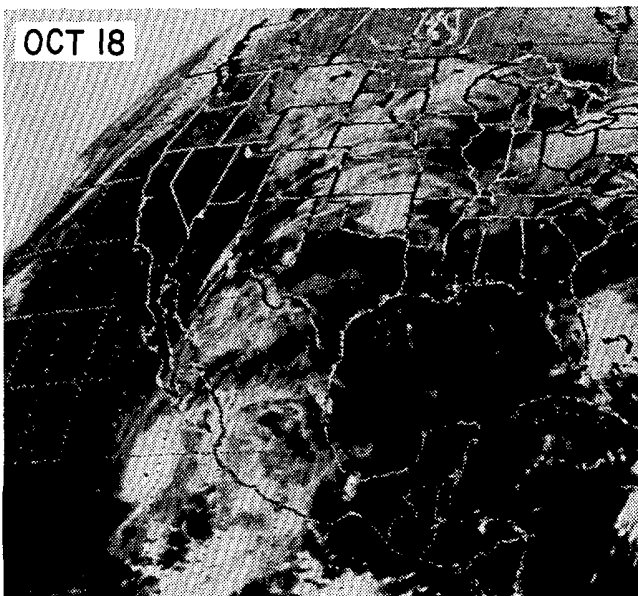
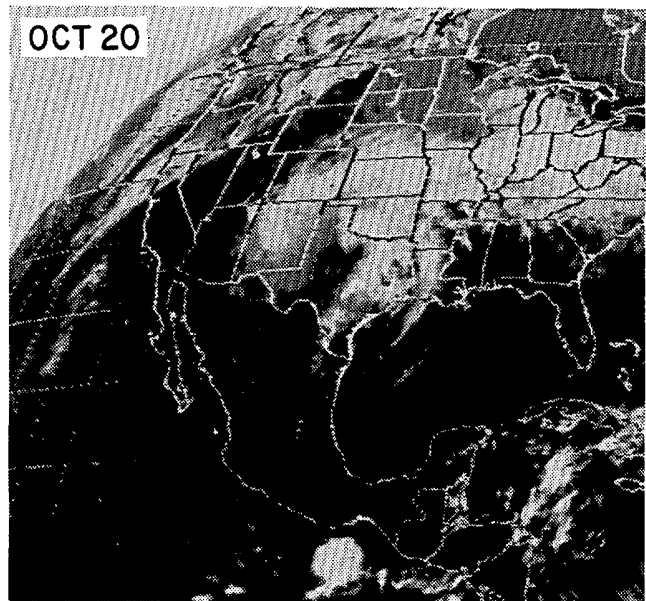
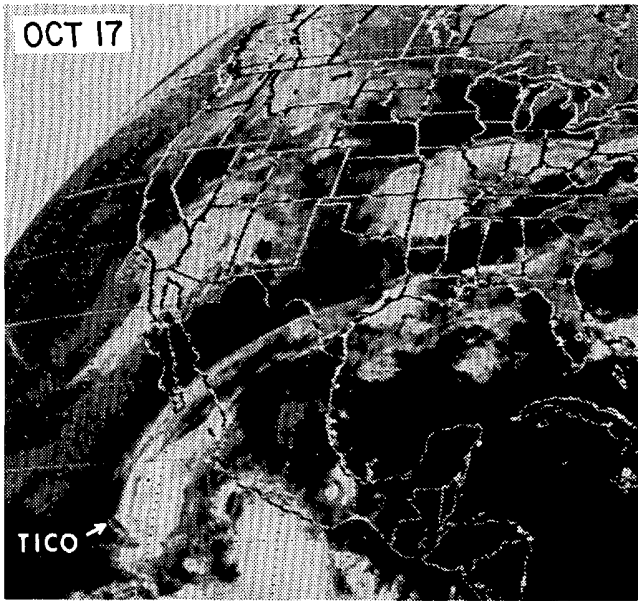


Total storm rainfall for the period October 17-23, 1983. ---Mapping by the University of Chicago from data supplied by the National Climatic Data Center and NWSFOs at Little Rock, AR; Topeka, KS; St. Louis, MO; Oklahoma City, OK; Ft. Worth, TX; and Lubbock, TX.



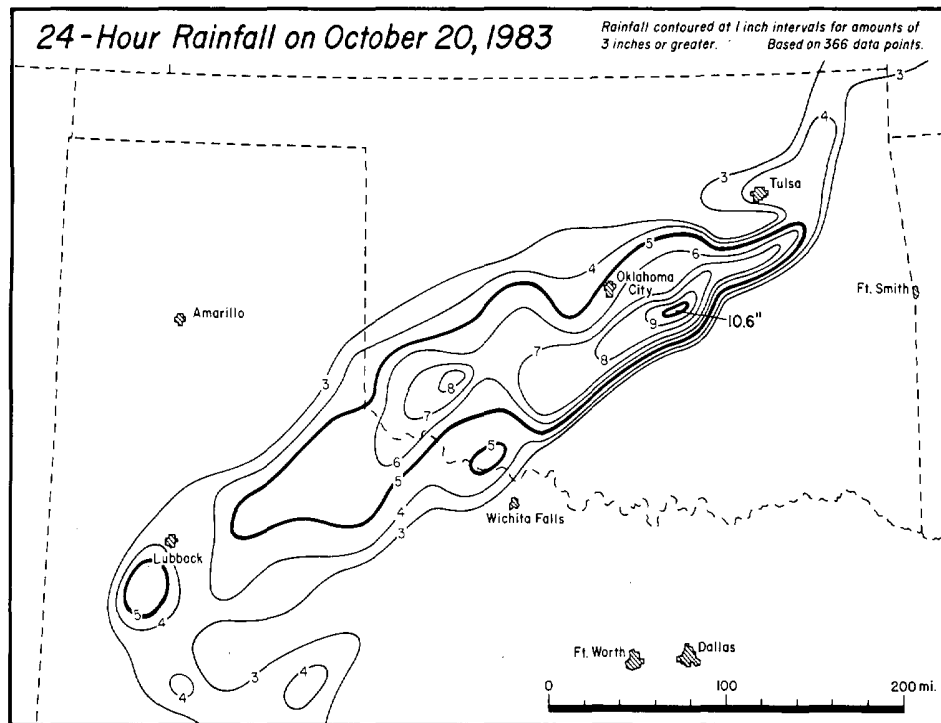
A graphical representation of the daily rainfall for five major cities in the region shows that, with the exception of St. Louis, most of the rain fell on the 19th and 20th of October.

HEAVY RAIN and FLOODING in the SOUTHERN PLAINS ---- continued



A sequence of GOES East satellite, infrared photos shows the rain-producing storm system at 1000 CST (1600 GMT) on each day from October 17th to the 22nd. Hurricane TICO came ashore in Mexico on October 19th and, thereafter, became a major mid-latitude cyclone. ---Photos from NESDIS.

HEAVY RAIN and FLOODING in the SOUTHERN PLAINS ---- continued



24-hour rainfall analysis for October 20th. The maximum 24-hour total, 10.6 inches, was registered at Shawnee, Oklahoma. The analysis is somewhat smoothed since some stations report amounts for 0700 to 0700 while others use the period, midnight to midnight. ---Mapping by the University of Chicago. Data supplied by Eldon Beard, NWSFO, Oklahoma City, OK; Gifford Ely, Jr., NWSFO, Ft. Worth TX; A. Casteneda, NWSFO, Lubbock, TX; and Jay Ziemianski, NCDC, Asheville, NC.

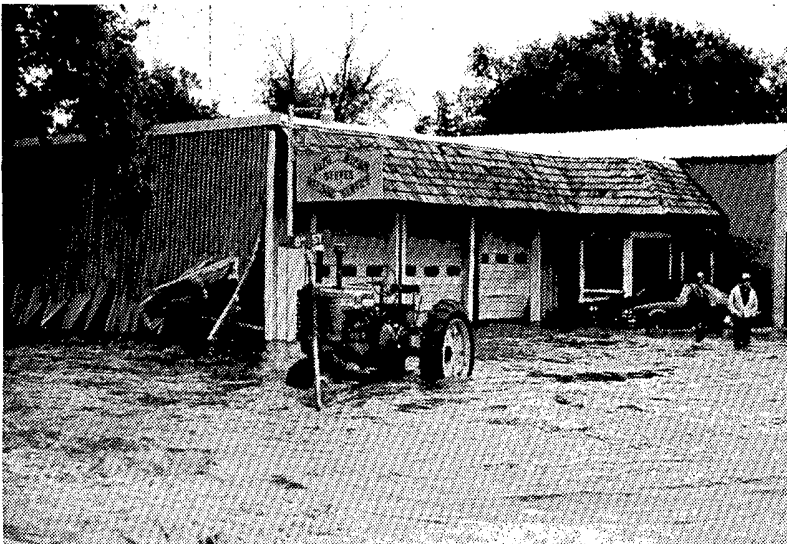


An aerial view of Guthrie, Oklahoma, one of the worst struck towns by the flash flooding which resulted from the heavy rains. Guthrie lies about 30 miles north of Oklahoma City. ---Photo by Lewis Jarrett, The Tulsa Tribune.

HEAVY RAIN and FLOODING in the SOUTHERN PLAINS ---- continued



A flooded section of Guthrie on October 21st, the day after the nearby Cottonwood Creek had crested at 29.6 feet (9.6 feet above flood stage). ---Photo by Lewis Jarrett, The Tulsa Tribune.



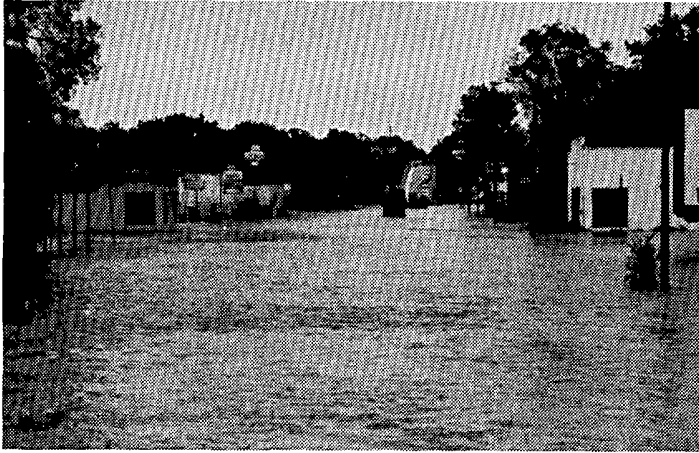
The force of the fast-flowing waters pushed in the doors and ripped apart the sheet metal wall of this auto repair in Guthrie. One man drowned in Guthrie when he was swept from a car onto which he was holding.



Firefighters and National Guardsmen conduct a house-by-house search in Guthrie for 3 persons believed to have been missing. Here, waters had already receded two to three feet.

---Both photos by Cherie Hamilton, The Guthrie Daily Leader.

HEAVY RAIN and FLOODING in the SOUTHERN PLAINS ---- continued



Looking east down a portion of the main east-west street in Guthrie after the water had somewhat receded on October 21st.

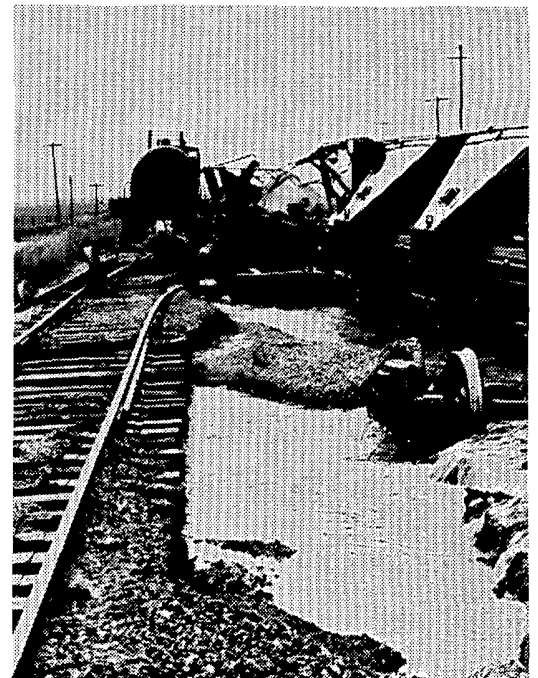


An overturned car and motorcycle stand as reminders of the swift-moving waters. Many vehicles in Guthrie were found blocks away from where they were parked.

---Both photos by Cherie Hamilton, The Guthrie Daily Leader.



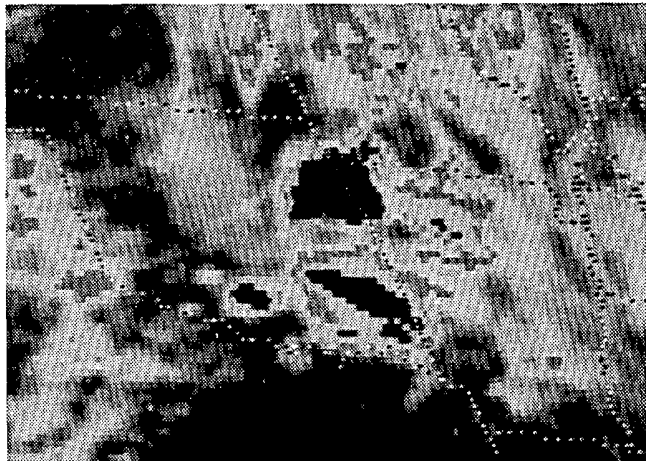
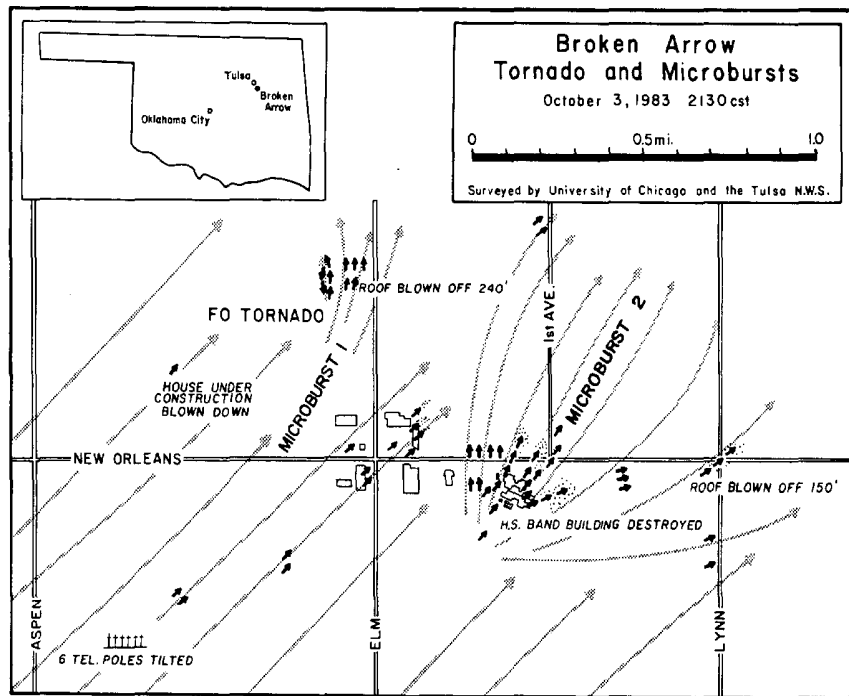
LEFT: Motor boats and Oklahoma Highway Patrol cars meet where a bridge embankment becomes submerged by the flood waters in Guthrie. ---Photo by Lewis Jarrett, The Tulsa Tribune.



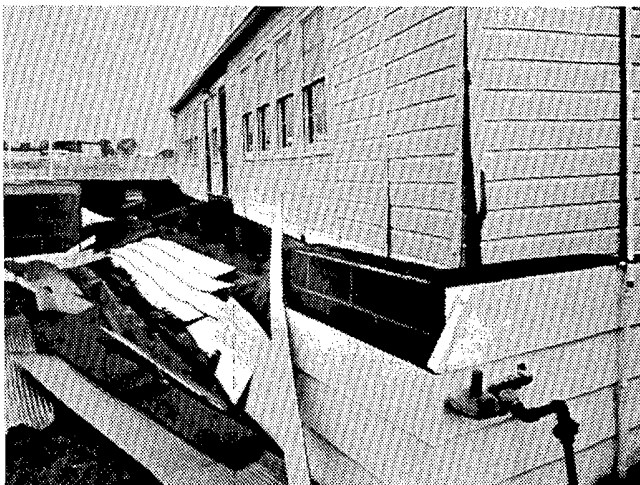
A train wreck which resulted when rains carried off ballast from a roadbed near Altus in extreme southwest Oklahoma. Three cars totally derailed and several others buckled on the tracks as the train crossed a spot where flowing water had cut beneath the tracks. ---Photo by Rick Combs, The Altus Times.

3. MICROBURSTS and TORNADO at BROKEN ARROW, OKLAHOMA on October 3, 1983

During the evening of October 3rd, a rapidly developing thunderstorm produced two microbursts and a small tornado in Broken Arrow, OK near Tulsa. The microburst winds damaged the South Intermediate High School, completely destroying the band building, unroofed other structures, downed power poles, and caused minor damage to numerous other buildings. Total damage was estimated at \$1 million. Surveys of the damage area were conducted by the Tulsa NWSO, and Brian Waranauskas and James Partacz of the University of Chicago.



Infrared GOES West satellite images show the rapidly growing anvil of the microburst-producing storm in northeastern Oklahoma at 2115 CST (left) and 2145 CST (right) on October 3rd. ---Photos from NESDIS.



A prefab classroom building at the South Intermediate H.S. that was blown 8 feet off its foundation. ---Photo by Dick Grant, The Tulsa Tribune.



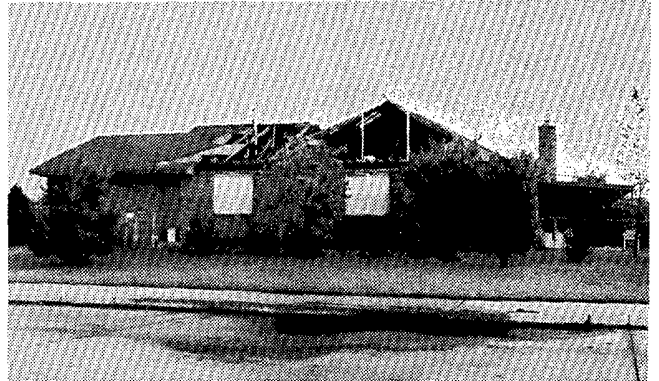
A cinder block garage with one wall partially collapsed. The sheet metal roof was blown 150 feet, landing near the intersection of Lynn and New Orleans Roads. ---Photo by Brian Waranauskas, U of C.



A clean-up crew salvages band equipment from the destroyed band building at South Intermediate H.S. The adjacent building, only 10 feet away, had only light damage. ---Photo by Dick Grant, The Tulsa Tribune.

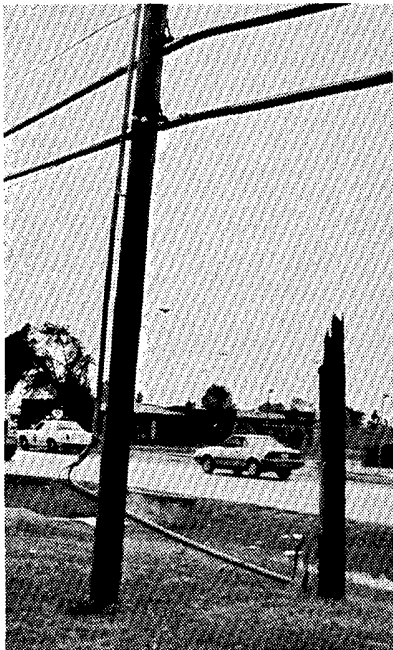


Band instruments and debris strewn from the destroyed building. Total damage to the school was estimated at \$500,000.



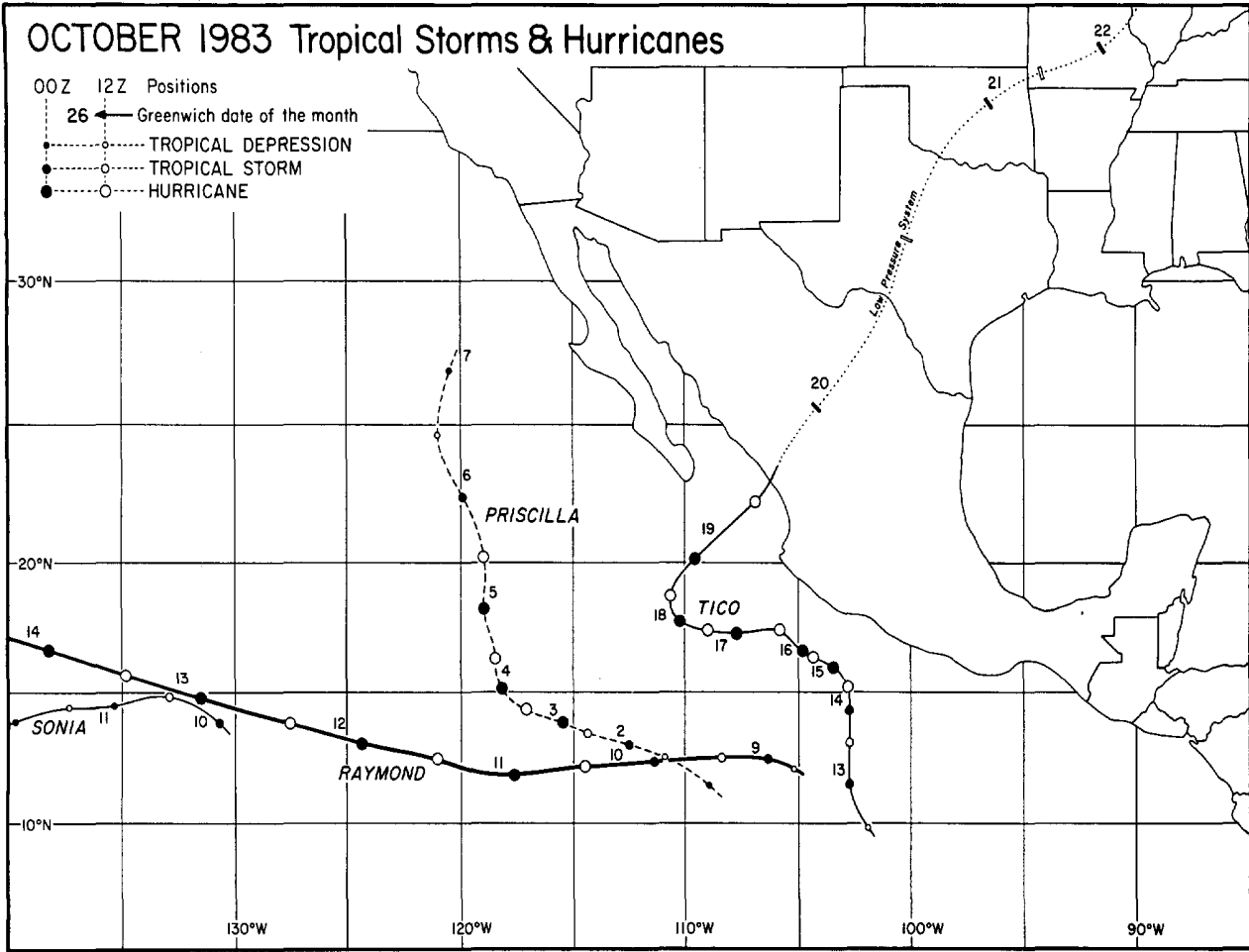
The damaged second floor of a home at the starting point of the small tornado. The upper floor was under construction at the time.

---Both photos by Jim Wolfe, The Tulsa World.

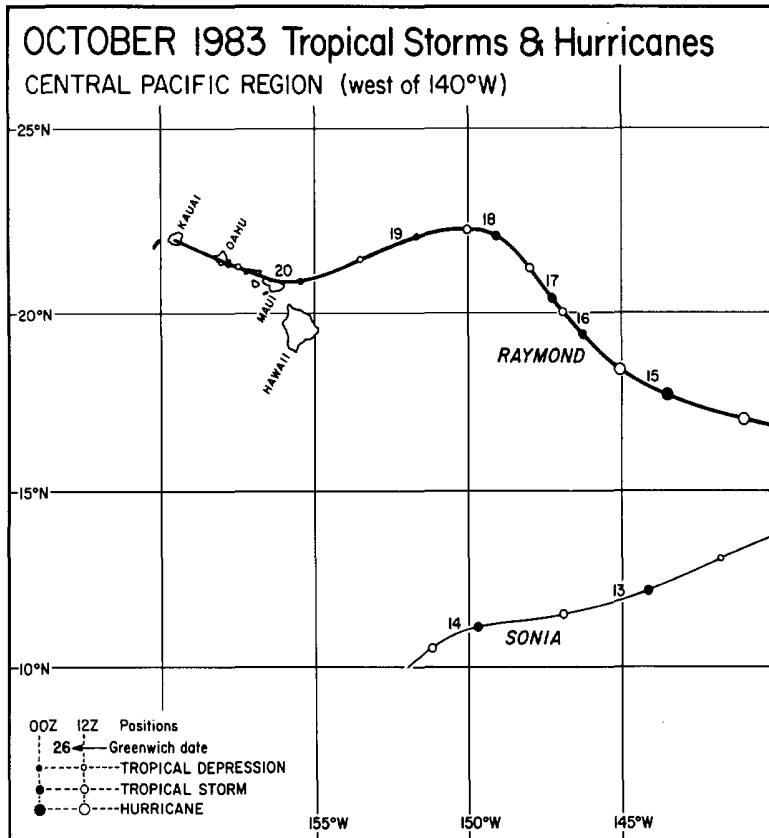


LEFT: A power pole remains standing after having been snapped off and moved several feet away by the microburst winds. ---Photo by Jim Wolfe, The Tulsa World.
RIGHT: One of 10 power poles that were toppled across the road from the high school. ---Photo by Dick Grant, The Tulsa Tribune.

TROPICAL STORMS AND HURRICANES



---Best track data from NWSFO, San Francisco, CA.



---Best track data from NWSFO, Honolulu, HI.

STORM DATA AND UNUSUAL WEATHER PHENOMENA

OCTOBER 1983

PLACE	DATE	TIME - LOCAL STANDARD	LENGTH OF PATH (MILES)	WIDTH OF PATH (YARDS)	NO. OF PERSONS		ESTIMATED ¹ DAMAGE		CHARACTER OF STORM
					KILLED	INJURED	PROPERTY	CROPS	
1 ALABAMA ————— NONE REPORTED									
2 ARIZONA									
Tucson, Pima County	19	1830MST			0	0	4	0	Thunderstorm, Hail
During a severe thunderstorm, 5/8 inch diameter hail fell over parts of the city with only minor damage.									
Prescott, Yavapai County	24	1605MST			0	0	0	0	Thunderstorm Wind
Wind gusted to 58 mph during a severe thunderstorm at Prescott Airport with no damage reported.									
3 ARKANSAS									
Boone County	04	0730CST			0	0	3	-	Lightning
Lightning started an attic fire at a Harrison residence.									
Craighead County	04	1330CST			0	0	3	-	Winds
Strong winds from a thunderstorm damaged the aluminum facades of two businesses in Jonesboro.									
Sharp County	04	1815CST			0	0	-	-	Hail
Hail ranging in size from 3/4 - 1 inch was reported by the cooperative observer at Evening Shade.									
Clay County	11	1940CST			0	0	4	-	Wind
Strong thunderstorm winds knocked down trees and power lines in the Hall and Gravel Hill communities. Also, the wind destroyed five barns, and a carport. One of the trees opened a large hole in the wall of a residence.									
Pulaski County	11	2200CST			0	0	3	-	Winds
Thunderstorm winds knocked down trees, tree limbs and utility poles in Little Rock.									
Independence County	12	0044CST			0	0	4	-	Lightning
A Walnut Grove residence was destroyed by fire after a lightning strike.									
Jefferson County	17	1450CST			0	0	3	-	Lightning
Lightning struck the roof of a Pine Bluff church, opening a 2-foot hole. No fire ensued.									
Drew County	17	1600CST			0	0	4	?	Severe thunderstorm
A strong thunderstorm moved east through the northern portion of the county across Ozment's Bluff and Selma. Lightning struck a tree and killed 6 cows. Large hail was also reported.									
4 CALIFORNIA, Northern ————— NONE REPORTED									
4 CALIFORNIA, Southern ————— NONE REPORTED									
5 COLORADO									
Northeast Plains	2	1700-1800 MST			0	0	0	3	High winds
Heavy thunderstorms produced wind gusts estimated at 90 to 100 mph in places. Some corn suffered minor damage south of Fort Morgan.									
Northern Mountains	14				0	0	0	0	Snow
Up to 8 inches of snow fell in the mountains northwest of Eagle.									
6 CONNECTICUT									
Southwest Portion	5	Early Evening			0	0	0	0	Thunderstorm Winds & Brief Heavy Rain
A fast-moving cold front caused locally heavy thunderstorms and coastal areas reported minor flooding and scattered power outages. Wind gusts reached 45 MPH in Norwalk.									
Danbury, Bridgeport Area	12	Afternoon & Evening			0	0	0	0	Heavy Rain & Local Flooding
A torrential two hour downpour flooded streets and highways. In Danbury, 2.43 inches of rain fell during the period. The entire town of Monroe, 4,254 electric customers, lost service. In Bridgeport, flooding was reported in all low lying areas and manhole covers were blown off by the water pressure in the drainage system.									
7 DELAWARE ————— NONE REPORTED									
8 FLORIDA									
Pierson, Volusia County	08	0400EST	-	-	0	0	4	0	Lightning
Lightning started insulation on fire in an attic.									
Lake Wales, Polk County	08	0430EST	-	-	0	0	4	0	Thunderstorm Winds
Wind damage to mobile homes, cars hit by debris, trees uprooted, canopy blown down, traffic lights blown down.									
Boca Raton, Palm Beach County	11	0700EST	-	-	0	0	4	0	Lightning
Lightning started a fire in a home.									
Eglin Air Force Base, Okaloosa County	12	0430EST	-	-	0	12	2	0	Lightning
Lightning struck a generator which exploded and injured 7 men and 5 other men were injured by nearby lightning strikes.									
Destin, Okaloosa County	12	0511EST	-	-	0	0	5	0	Lightning
Lightning started a fire in a store.									
Monticello, Jefferson County	12	0700EST	-	-	0	0	2	0	Thunderstorm winds
Wind damaged a patio and blew down 50 trees.									
Port St. Joe, Gulf County	13	0030EST	-	-	0	0	2	0	Lightning
Lightning started a fire in a business.									
Royal Palm Beach, Palm Beach County	16	1300EST	-	-	0	1	0	0	Lightning
Lightning struck and injured a golfer.									
9 GEORGIA									
Habersham and Rabun Counties	12	2330-0000EST	15	100	0	6	5	0	Tornado (F1)
A tornado touched down west of Clarkesville along Highway 115 and moved northeast across the Rabun Beach area in Rabun County. The tornado destroyed three mobile homes in Habersham County, causing minor injuries to 6 people. At least 11 other homes were damaged and dozens of trees were snapped off or blown down. Several power lines were downed.									
Oconee County	13	0000 EST			0	0	4	0	Wind
Thunderstorm winds destroyed a mobile home 5 miles south of Watkinsville. Several other homes were damaged and a large number of trees were downed.									
Gilmer County	13	0520EST			0	0	4	0	Wind
Thunderstorm winds downed several apple trees in the eastern part of the county. The storm caused minor roof damage to two houses and blew the back porch off one house. A few power lines were downed.									
Madison County	13	0930EST			0	0	4	0	Wind
Thunderstorm winds damaged the sheet metal roof of a barn just northeast of Ila. Several pine trees were broken off about 30-40 feet above the ground. The storm also downed several trees near Colbert; one of the trees fell on a car. Roof damage to one home was also reported.									
Laurens County	23	1415EST			0	0	4	0	Wind
Thunderstorm winds destroyed a mobile home in east Dublin. No one was in the building when the storm struck.									
10 IDAHO ————— NONE REPORTED									
11 ILLINOIS ————— NONE REPORTED									

STORM DATA AND UNUSUAL WEATHER PHENOMENA

OCTOBER 1983

PLACE	DATE	TIME - LOCAL STANDARD	LENGTH OF PATH (MILES)	WIDTH OF PATH (YARDS)	NO. OF PERSONS		ESTIMATED DAMAGE		CHARACTER OF STORM
					KILLED	INJURED	PROPERTY	CROPS	
12 INDIANA									
3 N Patoka Gibson County	04	2120EST			0	0	2	0	Thunderstorms Winds
Winds estimated at 60 miles an hour blew down tree limbs and powerlines.									
Gatesville Pike County	04	2140EST			0	0	2	0	Thunderstorms Winds
60 to 70 mile an hour winds downed tree limbs and powerlines.									
13 IOWA									
Buena Vista County	10	1330 CST			0	1	3	0	Lightning
Mr. and Mrs. Roy Schultz were driving their automobile about 3 miles from Laurens, their home. A lightning bolt struck the car, apparently through the CB antenna. A "ball of fire" was between them in the car as the lightning destroyed the Citizens Band Radio. After sitting in the car for about 5 minutes, they decided to drive home only to discover one of the right tires was flat. After fixing that, they drove home, at which time they found they had another flat, again on the right side of the car. The only thing left of the CB antenna was a scorched bracket. The Schultzes found burn holes in the flat tires with the steel belting pieces burned inside the casing. Otherwise, there was no evidence of any burns in the car, even though the CB was ruined. Mr. Schultz was unharmed by the event and Mrs. Schultz only suffered earaches afterwards.									
14 KANSAS									
Mankato, Jewell County	10	1745- 1900CST			0	0	1	0	Hail
A thunderstorm dropped large hail on the central part of Jewell County. Hailstones 3/4 inch in diameter fell 8 miles west of Mankato at 1758 and inch diameter hail fell at Mankato at 1853CST.									
Russell and Osborne Counties	10	1900- 2000CST			0	0	1	0	Hail
A thunderstorm dropped hail over southern Osborne and northern Russell Counties. Inch diameter hailstones fell at Natoma at 1920 and at Luray at 1955CST.									
Kalvesta, Finney County	10	2105CST			0	0	1	0	Hail
A thunderstorm dropped 3/4 inch hail at Kalvesta and also covered the ground in parts of Hodgeman County with small hail.									
Wakefield, Clay County	10	2230CST			0	0	5	0	Lightning
Lightning set fire to a home in Wakefield. The home and its contents were a total loss.									
Ellsworth, Ellsworth County	19	0100CST			0	0	5	0	Lightning
Lightning set fire to a downtown business in Ellsworth. The resulting fire left the building a total loss.									
Southeast Corner of Kansas	19- 20	Evening Evening			0	0	4	0	Heavy Rain, Flooding
The remains of Hurricane Tico dropped 4 to 6 inches of rain upon Bourbon, Neosho, Montgomery and Chautauqua Counties. Six to eight inches were measured in most of Labette, Crawford and Cherokee Counties. Some small streams left their banks for a short time, but only minor flooding resulted. The Neosho River peaked slightly above flood stage near the Oklahoma border. Water closed US Highway 101 between Edna and Altamont in Labette County and US 160 near Independence for a time on October 20. Flooded runways also forced the Parsons Airport to close on the 20th.									
SPECIAL HAIL SUMMARY									
Kansas-Oklahoma Hail Loss Service reports indicate hail was especially damaging to crops on the following date in the listed county.									
10	Stanton								
16 LOUISIANA ————— NONE REPORTED									
17 MAINE ————— NONE REPORTED									
18 MARYLAND and D.C.									
Northern	13	1800-2000EST			0	16	5	0	Wind, Lightning
Severe thunderstorms tore through the area beginning close to 6PM near the west boundary of Frederick County, and eastward through Carroll, Baltimore, Harford and Cecil Counties. Damage was widespread and pointed to a likelihood of a family of downbursts associated with a strong cold front. Damage appeared heaviest in the Middletown-Meyersville areas of western Frederick County where wind gusted to near 60 mph. Trees were uprooted and buildings destroyed or badly damaged on several farms. One farmstead reported up to \$100,000 damage, while a home near Brunswick had its attached garage destroyed. Two homes in the Meyersville area were struck by lightning, one sustaining extensive damage. On nearby Route 40 a man riding in a car was injured when a tree limb smashed through the vehicle and penetrated his arm. Elsewhere, at Lake Summit Camp near Thurmont, 15 young people were slightly injured by flying glass when winds blew out a large window. Considerable damage to power lines occurred elsewhere, along with many vehicles damaged by fallen trees or limbs.									
Leonardtown (5NE)	13	1945EST	4	35	0	0	4	0	Tornado (F2)
Small tornado developed from a violent thunderstorm in the vicinity of Hollywood, in St. Marys County, where it took roofing and siding from three homes and uprooted or topped many trees as it touched down at least three times. It then crossed the Patuxent River and intensified as it moved into the Broomes Island community. Demolished a cinderblock fish house, damaged some more homes and wreaked havoc with trees and power lines.									
19 MASSACHUSETTS									
Pittsfield and Adams	5	Evening			0	0	0	0	Thunderstorm Winds
Several large trees were blown down blocking some roads during a brief thunderstorm. Some wires were reported down in Adams.									
Statewide	28	Evening			0	0	3	0	Strong and Gusty Winds
29 Early morning Strong and gusty winds caused scattered power outages as some trees and branches fell across power lines. In Easthampton, a large tree fell on a house ripping off part of the roof and crushing a car parked in the driveway. In Worcester, a house was slightly damaged by a falling tree.									
20 MICHIGAN									
Straits of Mackinac	14	0200- 1100 EST			0	1	4	0	Wind
Boy injured by roofing blown off lodge hall in St. Ignace. Gusts up to 60 mph on Mackinac Bridge. Several vehicles went out of control with some minor damage.									
Lake Superior, off Whitefish Point	27	1500 EST			1	0	3	0	Wind and waves
Small boat swamped. One man swam ashore, the other drowned.									
21 MINNESOTA ————— NONE REPORTED									
22 MISSISSIPPI ————— NONE REPORTED									
15 KENTUCKY									
Statewide	22	0700- 2100EST			0	0	2	0	Heavy Rain Minor Flooding
Some flooding of low-lying areas and small creeks occurred over Kentucky when heavy rains of 2 to 4 inches slowly moved across the State. Cody Road, near Independence, in Kenton County and KY 2356 and Hogridge Road, both in Pendleton County, were closed by the Kentucky State Police due to water over roads. The heavy rainfall forced the cancellation of the Chevy Chase Art and Antique Fair in Lexington and made for a sloppy track for the 32nd running of the Alcibiades Stakes at Keeneland, also in Lexington.									

STORM DATA AND UNUSUAL WEATHER PHENOMENA

OCTOBER 1983

PLACE	DATE	TIME - LOCAL STANDARD	LENGTH OF PATH (MILES)	WIDTH OF PATH (YARDS)	NO. OF PERSONS		ESTIMATED DAMAGE		CHARACTER OF STORM
					KILLED	INJURED	PROPERTY	CROPS	
23 MISSOURI									
LaClede	4	1240CST			0	0	2	?	Damaging Wind Large Hail
									Hail to one inch diameter was accompanied by wind damage in Eldridge.
Cedar	4	1326CST			0	0	0	0	Large Hail
									Hail to 3/4 inch diameter at Stocton.
LaClede	4	1330CST			0	0	3	0	Damaging Wind
									Wind damaged a farm building 8 miles north of Lebanon.
Phelps	4	1340CST			0	0	4	?	Damaging Wind
									Thunderstorm winds downed power lines and large trees 2 miles north of Elk Prairie.
Crawford	4	1405CST			0	0	4	3	Damaging Wind
									Wind damaged trees in the Huzzah Forest in the eastern portion of the county and blew off a roof one mile north of Steelville. Winds were estimated 60 to 70 mph.
Lawrence	4	1417CST			0	0	2	2	Large Hail Damaging Wind
									Hail to one inch diameter was accompanied by damaging wind at Mt. Vernon. Damage was to trees and power lines.
Washington	4	1430CST			0	0	4	0	Damaging Wind
									Several farm buildings were damaged near Highway W. Moderate hail and high winds also reported near Potosi.
Jefferson	4	1510CST			0	0	3	2	Damaging Wind Flooding
									Thunderstorm winds damaged large tree limbs and a barn on the outskirts of DeSoto. Some street flooding was also reported in the south portion of the County.
Ozark	4	1630CST			0	0	5	4	Large Hail
									Hail to near baseball size was reported at Tecumseh and Caulfield breaking many windows and windshields. A number of roofs were also damaged. Some cattle had their backs broken.
Bollinger	4	1820CST			0	0	3	0	Damaging Wind
									Trees and power lines were downed by thunderstorm winds just south and east of Sedgewickville. Winds were estimated over 60 mph.
Barton	16	1600- 1630CST			0	0	6	6	Large Hail Damaging Wind
									A hail storm moved across northern Barton County about 7 miles northwest of Liberal to Lamar doing 1.2 million dollar damage to crops (soybeans). Scattered wind damage was also reported along the way to several farm buildings and some homes. Hail was several inches deep and generally around marble size.
Dade	16	1630- 1700			0	0	5	6	Hail and Damaging Wind Heavy Rain
									The same storm that hit Barton County moved into Dade County and destroyed many thousands of acres of soy beans as well as some milo crops. The hail had to be scraped off the highways with road graders around Neola. Wind damaged a number of farm buildings and some houses. Wind speeds were estimated to be near 90 mph. Rainfall amounts were as much as 4 to 7 inches. Hail size was generally only marble or a little bigger in this storm but piled up to 6 inches.
Greene	16	1830CST			0	0	4	0	Damaging Wind
									Thunderstorm wind blew over a chicken house and downed some power lines at Walnut Grove.
24 MONTANA ————— NONE REPORTED									
25 NEBRASKA									
Clay County	10	1812CST			0	0	0	2	Hail
									Two inch hail was reported 6 miles east-southeast of Clay Center.
York County	10	1814CST			0	0	0	2	Hail
									One and a half inch hail fell briefly around York.
Lincoln County	10	1825CST			0	0	0	0	Hail
									Three quarter inch hail fell for a short period at Hershey.
Muckolls County	10	1840CST			0	0	3	0	Lightning
									Lightning killed seven head of cattle on a farm near Superior.
26 NEVADA									
Tonopah, Nye County	02	1300PST			0	0	0	0	Funnel Cloud
									A funnel cloud was sighted by an FSS observer.
27 NEW HAMPSHIRE ————— NONE REPORTED									
28 NEW JERSEY ————— NONE REPORTED									
29 NEW MEXICO									
Catron, Grant, and Hidalgo Counties	1-3	All Day	0	0	0	0	7	7	Flood
									Heavy rains moved across southwestern New Mexico during the last days of September and early October. Amounts of up to 6 inches caused a major flood along the Gila and San Francisco Rivers; damages were reported in excess of \$14,000,000.
30 NEW YORK, Coastal ————— NONE REPORTED									
30 NEW YORK, Central									
Sylvan Beach Onieda County	05	1845EST			0	0	0	0	Cold Front
									A cold front with 30+ MPH winds and heavy rains caused power outages and downed trees. Also affected were the communities of Camden, Lee Center, Blossvale, Taberg, Williamstown, and Sylvan Beach areas. All are in Onieda Co..
Little Falls	5	1630EST			0	0	5	0	Lightning
									Lightning was blamed for a barn fire in Little Falls.
Eastern New York	08	0518EST			0	0	0	0	Earthquake
									An earthquake was felt throughout Eastern New York. No major damage was reported. The quake hit 5.2 on the Richter Scale, and was centered 9 miles NE of Blue Mtn. Lake. On part of the Goodnow Flow secondary tremors were felt at 5:40 and 5:50 EST.
Ticonderoga Essex County	13	0000EST			0	0	0	0	Heavy Rain
									Heavy rain shorted out a 115,000 volt powerline. 20,000 persons were out of power in Washington, Warren and Essex Counties.
Broome County Cortland County	13	2030EST			0	0	4	0	Flooding
									Minor basement flooding was reported in Broome and Cortland Co. Flooding was minor in area. Some power lines and tree limbs downed.
Herkimer County Fulton County Montgomery County	28	2200EST			0	0	3	0	High Winds
									High winds measured at 49 MPH, at Onieda Airport, and 42 MPH at Griffiss A.F.B. damaged several buildings, power lines and trees. Most severe damage was in N.Clinton, Kirkland, Deansboro, Vernon, Utica, Ilion, Mohawk, and Newport.
Schoharie County	28	2200EST			0	0	5	0	High Winds
									Gusting winds estimated at 65 MPH tore the roof and siding off a barn outside of Cobleskill. Power was also cut off to several hundred residents of Northern Schoharie County.

STORM DATA AND UNUSUAL WEATHER PHENOMENA

OCTOBER 1983

PLACE	DATE	TIME - LOCAL STANDARD	LENGTH OF PATH (MILES)	WIDTH OF PATH (YARDS)	NO. OF PERSONS		ESTIMATED DAMAGE		CHARACTER OF STORM
					KILLED	INJURED	PROPERTY	CROPS	
30 NEW YORK, Western									
Jamestown, Chautauqua County	05	Afternoon			0	0	3	0	Wind
			The roof of a barn was blown away by strong winds.						
Towns of Clayton and De Kalb in Jefferson County	13	Evening			0	0	4	0	Wind
			High winds tore a storage barn in Clayton. In De Kalb, it destroyed a house. Power lines were downed and thousands of homes were without electricity for various lengths of time. Hundreds were without telephone service for many hours.						
Elmira, parts of Chemung, Steuben, Schuyler Counties	13	Evening			0	0	4	0	Wind & Rain
			Heavy thunderstorms were responsible for brief street floodings. Strong winds severed power lines. Thousands of homes were blacked out for a few hours.						
Buffalo, Niagara Falls, Lockport, & other parts of Erie and Niagara Counties	14	Morning			0	0	5	0	Wind
			Gale-force winds with gusts up to 60 MPH walloped the area. It uprooted many trees and knocked down power lines. Windows of the Niagara Falls Rainbow Center were blown out. Thousands of homes had electrical interruption. At the Buffalo Small Boat Harbor, it tossed and damaged several boats. In Buffalo, a few homes were damaged and a trailer was upended. In Lockport, power lines were severed.						
Watertown and other parts of Jefferson County	14	Evening			0	0	4	0	Wind
			Winds gusting over 40 MPH downed many tall trees and severed electrical lines. Thousands were without electricity for up to 2 hours. A summer home on Brown Shores near Sackets Harbor was heavily damaged by a fallen large tree.						
Many parts of Western and Central New York	28				1	2	5	0	Wind
			Strong winds raked the area. Numerous trees and power lines were downed. Ten thousand homes or more were without electricity for various lengths of time. Quite a few homes and commercial buildings were damaged.						
			In the town of Bergen, Genesee County, a 7-year old boy was killed when a huge tree fell and struck him.						
			In Auburn, Cayuga County, powerful wind gusts toppled trees and blew out window glass. In Niagara Falls and Lockport, many streets were blocked by downed trees. A few cars were smashed. Power lines were cut.						
			In Le Roy, Genesee County, on Route 19, high winds blew a camper unit off the back of a pickup truck into an oncoming car on Route 19. Two persons were injured.						
31 NORTH CAROLINA									
Gold Mine, Macon County	13	0100EST			0	0	?	0	Thunderstorm Winds
			A severe thunderstorm producing strong winds moved through this small community northwest of Highlands during the early morning hours. Many large trees were uprooted over a three-quarter mile path by the straight-line winds which also damaged the roofs of several buildings and barns. No damage estimates were available.						
Rowan County	13	1430EST			0	1	4	0	Thunderstorm Winds
			Strong winds associated with a severe thunderstorm moving through the eastern part of the county downed numerous trees and powerlines interrupting utility service to over a hundred customers. Two separate automobile accidents near Salisbury, which were caused by tree limbs falling into the roads, resulted in one serious injury and \$8,000 in damages. Near the community of Liberty a mobile home sustained \$2,000 in damages when strong winds ripped off a patio cover.						
32 NORTH DAKOTA ————— NONE REPORTED									
33 OHIO									
3 S Wooster, Wayne County	13	1115EST	-	-	0	0	5	0	High Wind
			Thunderstorms with high winds crossed the county downing trees and utility lines. Three miles south of Wooster several camper trailers were overturned and destroyed.						
Stark County	13	1130-1215EST	-	-	0	0	5	0	High Wind
			Thunderstorm winds did extensive damage in Canton at 1130 AM. Several residences were damaged and trees and utility lines downed. Minor structural and tree damage occurred in Alliance at 1215PM.						
Dover, Tuscarawas County	13	1130EST	-	-	0	0	5	0	High Wind
			Thunderstorm winds downed over 100 trees and damaged buildings in the Dover area.						
Columbiana County	13	1200EST	-	-	0	0	5	0	High Wind
			Thunderstorm winds as high as 70 MPH downed trees and lines and caused minor structural damage.						
Ashtabula County	13	1210EST	-	-	0	1	5	0	High Wind
			Thunderstorm winds downed trees and lines and damaged several buildings. Damage was especially heavy in Ashtabula and Jefferson. An Ashtabula man was slightly injured when a tree fell on his car.						
34 OKLAHOMA									
Broken Arrow, Tulsa County	03	2125CST	Short	Narrow	0	1	6	0	Tornado (F0) Wind
			A downburst caused winds of 70 to 100 mph causing extensive damage. A small tornado was associated with this storm but damage was caused by the downburst. One police officer suffered a broken leg. Damage was estimated at \$1 million dollars.						
Fairview, Major County	04	1100CST			0	0	3	0	Wind
			Strong winds caused a church under construction to collapse. Damage was \$3,000 dollars.						
Hulen, Caddo County	06	morning			0	0	4	0	Lightning
			Lightning caused an oil storage tank to burn with damages about \$30,000 dollars.						
Sayre, Beckham County	06	1850CST			0	0	?	0	Wind
			Winds of 60 mph caused a tied down airplane to be overturned.						
Edmond, Oklahoma County	06	evening			0	0	3	0	Lightning
			Lightning caused \$1,000 damage to a home.						
Norman, Cleveland County	06	2140CST			0	0	5	0	Lightning
			Lightning caused a home to burn. Damages set at \$140,000 dollars.						
Edmond, Oklahoma County	06	2315CST			0	2	0	0	Lightning
			Lightning struck a power line which was being worked on by two men.						
Marietta, Love County	07	2332CST			0	0	?	?	Hail
			3/4 inch hail fell just west of town.						
Washington, McClain County	11	1112CST			0	0	?	?	Hail
			Golfball sized hail fell.						
Ada, Pontotoc County	11	1420CST			1	14	0	0	Lightning
			Lightning struck a football field, killing one player and injuring 14 others. The player expired on the 16th.						
Clayton, Pushmataha County	17	Morning			0	0	4	0	Lightning
			Lightning caused a home to burn with damages of \$25,000 to \$30,000 dollars.						

STORM DATA AND UNUSUAL WEATHER PHENOMENA

OCTOBER 1983

PLACE	DATE	TIME - LOCAL STANDARD	LENGTH OF PATH (MILES)	WIDTH OF PATH (YARDS)	NO. OF PERSONS		ESTIMATED DAMAGE		CHARACTER OF STORM
					KILLED	INJURED	PROPERTY	CROPS	

PLACE	DATE	TIME - LOCAL STANDARD	LENGTH OF PATH (MILES)	WIDTH OF PATH (YARDS)	NO. OF PERSONS		ESTIMATED DAMAGE		CHARACTER OF STORM
					KILLED	INJURED	PROPERTY	CROPS	

OKLAHOMA

Southwest and Central Oklahoma	17 thru 21								1 0 7 8	Flooding, Flash Flooding
<p>Heavy rainfall caused by the remains of Hurricane "Tico" caused extensive damage. Storm total amounts of 10 to 15 inches occurred with a maxima of 16.95 inches occurring in Grady county. Sixteen counties were designated disaster areas by President Reagan including: Caddo, Canadian, Cleveland, Comanche, Cotton, Garvin, Grady, Logan, McClain, Oklahoma, Pottawatomie, Jackson, Jefferson, Lincoln, Stephens, and Tillman. Seven other counties receiving heavy damage included Greer, Harmon, Love, Okfuskee, Seminole, and Washita. Total damages are being estimated at \$6.5 million for private, \$10.2 million for public, and \$77 million for agriculture.</p>										
Mustang, Canadian County	18 0930CST								0 0 ? 0	Lightning
<p>Lightning struck an oil well and storage battery setting it on fire. Tanks held 4,400 gallons of oil.</p>										
Elgin, Comanche County	19 1803CST	2.6	50						0 0 5 ?	Tornado(F2)
<p>A tornado set down 1.2 miles north and 1.3 miles west of Elgin destroying 1 house, 1 mobile home, and damaging other homes, trailers, and out buildings. Damages estimated at 75 to 100 thousand dollars.</p>										
Cache, Lawton, Comanche County	18 PM-20 AM								0 0 6 7	Flash Flooding
<p>Heavy rainfall of 11 to 13 inches caused West Cache Creek to flood portions of Cache the evening of 10/18/83. The same rainfall caused flash flooding on Wolf and East Cache creeks which flooded portions of Lawton the night of the 19th and morning of the 20th. Almost all creeks in Comanche county flood during this period.</p>										
Apache, Caddo County	19 night								0 0 5 7	Flash Flooding
<p>Heavy rainfall of 10 to 13 inches caused East Cache Creek to flood city of Apache. Reports indicate flood hit so quick nothing was saved. Eighty homes were flooded.</p>										
Jackson County	19 evening								0 0 5 6	Flooding
<p>Heavy rains of 9 to 12 inches caused wide spread flooding by the Salt Fork of the Red River. A railroad bed was washed out which caused the derailment of a train.</p>										
Norman, Lexington, Cleveland County	19PM-20AM								0 0 5 6	Flash Flooding
<p>Heavy rains of 10 to 13 inches caused Brookhaven Creek to flood sections of Norman and Chouteau Creek to flood portions of Lexington.</p>										
Midwest City, Oklahoma County	19PM-20AM								0 0 6 6	Flash Flooding
<p>Heavy rains of 10 to 13 inches caused Crutcho and Soldier Creeks to flood northern sections of the city.</p>										
Chandler, Wellston, Lincoln County	19PM-20AM								0 0 6 5	Flash Flooding
<p>Heavy rains of 10 to 14 inches caused the Deep Fork River and Bell Cow Creek to flood sections of Wellston and Chandler.</p>										
Shawnee, Dale, Pottawatomie County	19PM-20AM								0 0 6 7	Flash Flooding
<p>Rains of 12 to 15 inches caused the North Canadian River to flood portions of Shawnee. Deer Creek flooded Dale.</p>										
Ninnekah, Chickasha, Grady County	19PM-20AM								0 0 7 6	Flash Flooding
<p>Heavy rains of 10 to 13 inches caused the Little Washita River to flood which completely surrounded the city of Ninnekah. Line Creek flooded portions of Chickasha.</p>										
Lindsay, Garvin County	19PM-20AM								0 0 5 6	Flooding
<p>Heavy rains of 10 to 13 inches caused the Little Washita River to add to the already flooding Washita River which in turn flooded a 60 block area of Lindsay.</p>										

OKLAHOMA

Purcell, McClain County	20 morning									0 0 5 6	Flash Flooding
<p>Heavy rains of 12 to 16 inches caused Walnut Creek to flood from Washington to Purcell. The creek was out of its banks with flood waters moving southward on the west side of 135. The flood waters then moved eastward at highway 39 with the underpass (I35hwy 39) acting as a funnel which caused the water to be deeper and swifter across southern sections of Purcell. The water ate out roads, and washed 4 to 6 large mobile homes (14 x 70) down a ravine. A half mile of the Santa Fe mainline track was washed out just southeast of Purcell. A spur from mainline to Purcell was completely washed out. The sewer lines from Purcell to sanitary lagoon was also completely washed out which caused raw sewage to be dumped in South Canadian River. The flooding at Purcell began around 5AM and started reseeding at noon.</p>											
Walters, Cotton County	20PM-21AM								0 0 5 6	Flash Flooding	
<p>Rainfall of 9 to 11 inches caused East Cache Creek to flood a 2 block area on the north side of town.</p>											
Guthrie, Logan County	20PM-21AM								1 0 6 6	Flash Flooding	
<p>The Cottonwood Creek reached an all time crest of 29.6 feet at 2301 CST on the 20th. The creek flooded western sections of Guthrie forcing 500 people to be evacuated. A reported wall of water 4 feet deep moved across the rapidly rising water washing several cars and trucks off of the streets. One man was washed off of the car he was holding on to and was drowned. A rise of almost 5 feet occurred between 2100 and 2200 CST which was probably associated with the 4 foot wall of water. Damages to Guthrie are estimated at \$2 million to 2.5 million.</p>											
Clinton, Custer County	29 0915CST								0 0 4 0	Lightning	
<p>Lightning struck a home on the west side of Clinton causing about \$10,000 damage.</p>											

35 OREGON

Tillamook	22									0 0 4 0	High Winds
<p>Winds of at least 90 MPH crossed the airfield just south of Tillamook, damaging an aerolift cyclocrane. The winds were apparently associated with a small squall line which passed over the area.</p>											

36 PENNSYLVANIA, Eastern

Avoca, Luzerne County	13 2100EST									0 0 4 0	Wind
<p>Wind gusts accompanying thunderstorms uprooted or broke off many trees. Shingles and siding were torn off houses, sheds were toppled and a flying limb smashed a large display window. The winds swept all the contents out of the display area. Many customers were without electrical service for a time.</p>											

36 PENNSYLVANIA, Western— NONE REPORTED

37 RHODE ISLAND — NONE REPORTED

38 SOUTH CAROLINA

Aiken, Aiken County	13 0200EST									0 0 0 0 4 0	Lightning
<p>An area of thunderstorms moved through western and central South Carolina. Lightning set a large storage shed afire at Aiken Technical College.</p>											

STORM DATA AND UNUSUAL WEATHER PHENOMENA

OCTOBER 1993

PLACE	DATE	TIME - LOCAL STANDARD	LENGTH OF PATH (MILES)	WIDTH OF PATH (YARDS)	NO. OF PERSONS				ESTIMATED* DAMAGE	CHARACTER OF STORM
					KILLED	INJURED	PROPERTY	CROPS		
39 SOUTH DAKOTA										
Faulk County	01	0302CST	-	-	0	0	0	2	Lightning	A lightning related fire burned fourteen hay bales just northwest of Wecota.
40 TENNESSEE										
Cleveland, Bradley, County	12	2313cst							High wind	High winds downed a few trees in Cleveland according to the Police Department.
Ten Mile Community, Meigs County	12	2315cst			4	?			High wind	One double-wide mobile home was completely destroyed while one conventional home received minor damage when high winds affected the "Ten Mile Community" which is 12 miles northeast of Decatur along Highway 58. Wind damage was in a straight track about 500 yards long according to local Civil Defense officials. The mobile home was not tied down. A man was trapped in the rubble of the mobile home sustaining head and back injuries. Three other occupants of the mobile home including a three-year-old were blown about 50 feet from the mobile home, but their injuries were only minor. A number of trees in the area were downed.
Near Kingston, Roane County	13	0330cst					4		High wind	High winds caused property damage at Blue Springs Boat Dock out of Kingston but near Meigs County. A 28-foot pontoon boat was lifted out of the water and slammed into two other boats. When the boat landed, it began a chain reaction which collapsed part of the boat dock. Several other boats were damaged and the roof to the porch on the restaurant was torn off by the wind.
41 TEXAS, Northern										
Clay County	3	1650CST			0	0	6	?	Wind	Thunderstorm winds struck the town of Bellevue with the heaviest damage at the school. One building was completely destroyed, as were several surrounding houses. At least 15 houses sustained extensive damage along with several over-turned mobile homes. Three tractor-trailer rigs were blown over on the highway near town, but there were no reported injuries. Property damage was estimated at near \$750,000.
Jones County	6	1600CST-1630CST			0	0	4	?	Wind	High thunderstorm winds damaged roofs and downed power lines near Stamford in the northern part of Jones County.
Hamilton County	6	2040CST			0	0	4	?	Winds, Hail	Intense thunderstorm winds destroyed several barns and out-buildings near Carlton in northern Hamilton County at 2040CST. Farm equipment inside the buildings also suffered extensive damage. Two miles south of Olin, a mobile home was heavily damaged by the winds. Accompanying golfball size hail aided in damaging roofs in the area.
Bell County	6	2230CST			0	0	4	?	Winds	Thunderstorm winds caused scattered damage in an area approximately 1/2 mile wide and 2 miles long near Troy in northern Bell County. Numerous houses, mobile homes, barns, and out-buildings sustained damage during the brief storm.
Tarrant County	8	0300CST			0	0	?	0	Flooding	Heavy rains of 5 to 8 inches in just a few hours over two separate areas of Fort Worth caused local flooding. In the TCU area of southwest Fort Worth, several parked cars were pushed together by the fast run-off. In addition, several houses sustained water damage by the high waters. In the west part of town in the Como section, several houses and a restaurant sustained water damage. A driveway and chain link fence were washed away in the run-off.
Calahan County	8	1750CST			0	0	?	?	Hail	Department of Public Safety troopers reported 1 to 1-1/2 inch hail in Cross Plains.
TEXAS, Northern										
Eastland County	8	1850CST			0	0	?	?	Hail	Department of Public Safety troopers reported 3/4 inch hail covering the ground in Cisco.
North Texas	20 24	Early AM Evening			0	0	6	?	Flooding	The remnants of Hurricane Tico pushed northeastward across Texas from the Big Bend area to near Wichita Falls. Rainfall amounts of 5 to 7 inches were common in Hardeman and Wilbarger Counties, with lesser amounts across the rest of North Texas. This rain brought totals for the previous 4 days to near 12 inches in the Quanah area of Foard County, causing swollen streams to begin flooding. Numerous roads were closed due to high water in Hardeman, Foard, Knox, and Wilbarger Counties before the rain ended on the evening of the 20th. The resulting run-off caused flooding of lowlands for the next several days and was concentrated mainly along the Red River between Burkburnett and Gainesville. On the evening of the 24th, a new record was set as the river crested at 37 feet at the I-35 bridge in Northern Cooke County. Thousands of acres of cropland were flooded along the river. In addition, numerous farm buildings and equipment were lost, along with hundreds of head of cattle.
41 TEXAS, Southern										
Calhoun County	6	1005CST			0	0	0	0	Funnel	A brief funnel was reported to the Sheriff's Department.
Val Verde County	8	2123CST			0	0	2	?	Tstm Winds	A severe thunderstorm that formed in western Val Verde County moved eastward, producing high winds and very heavy rains. Strong gusts were noted in the storm from about 2110CST onward, but were only in the 30 to 40 mph range. As it moved across Amistad Dam, the gusts became stronger, and just as it crossed over the city of Del Rio at 2123CST, straight-line winds measured at 72 mph struck Laughlin AFB on the east side of the city. Minor damage was reported to buildings and vegetation.
Maverick, Uvalde Counties	8	2240CST			0	0	4	4	Tstm Winds	Strong winds from a severe thunderstorm caused widespread but minor damage across portions of the city of Eagle Pass as the storm moved eastward across the city. Winds were estimated at 50 mph or greater. Very heavy rain accompanied the storm. As the system moved southeast, winds estimated at near 50 mph struck the town of Uvalde near 2330CST. More significant and damaging winds were likely in southwest Uvalde County.
Burnett County	9	0215CST			2	2	4	0	Flash Flood	Showers and thunderstorms developed along a cold front aligned north-south across South Central Texas and were tracking southeastward at near 30 mph. In spite of this rapid movement, the storms produced general 2 to 3 inch rains across Burnett County. The runoff was sufficient to cause Camp Creek to rise over FM 1431 about 6 miles east of Marble Falls. The water was reported nearly 6 feet deep across portions of the road. A car traveling east along the road near 0215CST was washed into the creek by the rapidly rising water. Of the four passengers, a family, the mother was able to wade through the water to a small tree, where she clung for a very long time, until rescued. The father, attempting to carry the two small children to safety, slipped and lost his hold on the children. The father was swept away by the swiftly moving water and drowned. The father eventually was rescued. Both adults were hospitalized with injuries.
Burnett County	11	1745CST			0	0	4	5	Hailstorm	Hail the size of golf balls was reported through the Department of Public Safety in northern Burnett County. The thunderstorm that produced the hail was part of a line from Llano to Junction along a cold front that was moving to the southeast at 30 mph.
Brazoria, Fort Bend, Matagorda, Wharton Counties	16	1700CST			0	0	?	?	Flooding	Slow-moving thunderstorms produced very heavy rain across the four-county area. Rain began near 1500CST with 3-inch rainfall over portions of the area by 1700CST, and isolated 5-inch amounts by 2200CST. The rains tapered off rapidly after 2330CST. In Wharton County, rainfall of up to 22 inches was reported, with the Boling and Louise areas being the hardest hit. Flooding forced the evacuation of some homes in the two towns, and numerous bridges and roads were impassable. In addition, schools were closed in Boling, El Campo and Louise on the following day as several bridges were completely washed out.

STORM DATA AND UNUSUAL WEATHER PHENOMENA

OCTOBER 1983

PLACE	DATE	TIME - LOCAL STANDARD	LENGTH OF PATH (MILES)	WIDTH OF PATH (YARDS)	NO. OF PERSONS		ESTIMATED DAMAGE		CHARACTER OF STORM
					KILLED	INJURED	PROPERTY	CROPS	
TEXAS, Southern									
Jackson, Victoria Counties	17	0515CST			0	0	?	?	Flash Flooding
	<p>General rains of 2 to 3 inches had occurred through the nighttime period over Jackson and Victoria Counties, but had caused no serious flooding. However, about 0300CST, additional rain began to fall. By 0515CST, flash flooding had developed over portions of the two counties, as additional 2 to 3 inch accumulations had taken place. The heaviest rainfall had fallen near Inez, as a total of 8 inches was recorded during the night and morning period. Highway 59 flooded just inside Jackson County, near Inez as a result of the rainfall.</p>								
Matagorda County	17	0745CST			0	0	?	?	Flash Flooding
	<p>Flooding redeveloped across Matagorda County in the morning period as thunderstorms produced additional rainfall between 0500CST and 0900CST. General 6 to 8 inch rains fell with one isolated 17 inch amount. Several families in Clewville were evacuated due to the rapidly rising water near 1100CST.</p>								
Val Verde County	20	0210CST			0	0	5	?	Flash Flooding
	<p>The remains of Hurricane Tico moved northeastward out of Mexico into Central Texas, and, in conjunction with a cold front moving southeastward into Central Texas, produced very heavy rains. Val Verde County received between 1 and 3 inches of rain between 0100CST and 0200CST. Flash flooding resulted along San Felipe Creek in Del Rio very shortly afterward. Portions of the adjacent area received accumulations of up to 6 inches with a 10-foot rise reported in the creek. Although no lives were lost, flooding was severe along the creek, and about one hundred people had to be evacuated.</p> <p>In addition to the damage caused by the flooding and heavy rain, wind gusts of up to 72 mph were recorded at Laughlin AFB near Del Rio as the storm system moved northeast across the area. The wind tore off a part of the roof of a dormitory, collapsing one wall. No one was injured. Other minor damage was reported to homes and vehicles due to the high wind around the Del Rio area.</p>								
Edwards, Kinney Counties	20	0030CST			0	0	?	?	Flash Flooding
	<p>The heavy rains associated with Hurricane Tico moved eastward into Edwards and Kinney Counties. The rains began near 2300CST and increased rapidly from 2300CST to 0030CST. General accumulations of 2 to 3 inches were reported over the two county area with isolated reports of up to 5 inches.</p>								
Bee, San Patricio Counties	20	1930CST			0	0	?	?	Flooding
	<p>Slow-moving, very heavy thunderstorms produced rainfall of between 10 and 12 inches between the towns of Skidmore, in Bee County, and Sinton, in San Patricio County. The rain began just after noon CST and continued through 1500CST. Flooding developed about 1930CST with SH 181 north of St. Paul closed for several hours.</p>								
41 TEXAS, Western									
Midland, Midland County	02	1537CST			0	0	?	0	Wind
	<p>A downburst unroofed a storage building, damaged several roofs in Eastern Midland County near the intersection of roads 1317 and 122. At approximately the same time, a sign at a used car lot was disintegrated by strong winds and the flying debris damaged six cars in the City of Midland.</p>								
Childress, Childress County	02	1713CST			0	0	0	0	Wind
	<p>Thunderstorm wind to 58 mph in Childress produced no known damage.</p>								
Lubbock, Lubbock County	06	Morning			0	0	5	0	Hail & Wind
	<p>A strong thunderstorm dumped considerable marble-sized hail, accompanied by high wind, in the City of Lubbock. This combination caused much damage to several houses and to a local shopping center. House roofs were damaged, several windows were smashed and one storefront was demolished.</p>								
Fort Stockton, Pecos County	06	1700-2000CST			0	0	?	0	Wind
	<p>Strong winds turned over several mobile homes, blew several trees down and damaged roofs on several homes in Fort Stockton.</p>								
Monahans, Ward County	06	1735CST			0	0	0	0	Hail
	<p>Golfball-sized hail fell 6 miles south of Monahans. No damage.</p>								
Alpine, Brewster County	08	1420CST			0	0	0	0	Hail
	<p>Radio Station KVLV in Alpine reported golfball-sized hail. No damage reported.</p>								
TEXAS, Western									
Brewster County	08	1530-1830CST			0	0	?	0	Flash Flood
	<p>Flash flooding occurred in several Brewster County locations. In Alpine the amount of rain exceeded 4 inches, leading to very rapid runoff and closing of intersections and underpasses. Normally dry creeks and arroyos were overflowing and carrying rocks and debris onto highways and roads. Water was up to 6 feet in some low water crossings. Damage was not calculated.</p>								
Anton, Hockley County	16	1745CST			0	0	0	0	Hail
	<p>One and one-half inch hail fell in Anton. No damage reported.</p>								
Littlefield, Lamb County	16	1845CST			0	0	?	0	Hail
	<p>Golfball-sized hail fell in Littlefield, but no damage was reported.</p>								
Wolfforth, Lubbock County	16	2142CST			0	0	0	0	Wind
	<p>Strong thunderstorm wind to 60 mph hit Wolfforth. No damage reported.</p>								
Lubbock, Lubbock County	16	2214CST			0	0	0	0	Wind
	<p>Strong and gusty wind to 64 mph hit the Lubbock Airport. No damage noted.</p>								
Lubbock and Surrounding Counties	18-20	Nearly two days			0	0	8	0	Flood and Flash Flood
	<p>Record breaking rainfall flooded Lubbock and many other locations around Lubbock. The rain started on the evening of the 18th and ended early on the 20th. After it was all over, much property and cotton had been ruined.</p> <p>Several rainfall stations, including Lubbock, reached or surpassed the 7-inch rain mark. Others were Brownfield and Paducah. Many other stations measured amounts between 5 to 7 inches during the same period of time.</p> <p>Lubbock and Brownfield had the most damage. The flood waters in Lubbock forced the evacuation of residents in a nursing home, closed many streets, filled playa lakes, flooded many homes and drowned many cars. Flooding in Brownfield caused similar problems to those that happened in Lubbock.</p> <p>Farm crops, particularly cotton, in the South Plains suffered extensive damage. Much of the cotton that was left after an earlier freeze and hailstorm was a total loss to farmers.</p> <p>This flood will go down as one of the biggest in the history of the South Plains.</p>								
42 UTAH ————— NONE REPORTED									
43 VERMONT ————— NONE REPORTED									
44 VIRGINIA									
Statewide	13	Afternoon-Evening	0	0	6	0	0	0	Wind, Rain
	<p>Severe thunderstorms surged across the state, mainly in the area between the Blue Ridge Mountains and the coastal plain. The nature of much of the damage pointed to a likelihood of a family of downburst-type windstorms (several tornadoes were also verified...these are listed in the following summary) associated with a strong cold front that moved into the mid-Atlantic region. The activity first developed over the southwest section, where winds of up to 70 mph were reported in the Roanoke area, and tree and property damage occurred in Patrick and Henry Counties between 2PM and 3PM. At about the same time considerable damage occurred in the Lynchburg area, with homes and autos damaged by falling trees...one large tree falling through the den of a house. In addition, power lines were downed and mobile homes and small outbuildings were severely damaged or totally destroyed in several locations. A similar pattern of damage was scattered northeastward through the central counties culminating in rather widespread damage through Fauquier, Prince William, Fairfax and Loudoun Counties in the northern portion of the state between 5PM and 7PM.</p> <p>The listing of tornadoes associated with the above storm system follows:</p>								
Richmond (22NW)	13	1600EST	4	25	0	0	5	0	Tornado (F1)
	<p>Small tornado touched down briefly in Goochland County near the Louisa County line, damaging an unoccupied trailer and store. It proceeded into Louisa County where, 15 minutes later, it struck an 18th-Century home...peeling off the roof and badly damaging the porch and trees surrounding it. A peculiar humming sound was heard and the funnel was observed by several people.</p>								

STORM DATA AND UNUSUAL WEATHER PHENOMENA

OCTOBER 1983

PLACE	DATE	TIME - LOCAL STANDARD	LENGTH OF PATH (MILES)	WIDTH OF PATH (YARDS)	NO. OF PERSONS		ESTIMATED ¹ DAMAGE		CHARACTER OF STORM
					KILLED	INJURED	PROPERTY	CROPS	
— VIRGINIA									
Albemarle County	13	1630EST			0	0	0	0	Funnel Aloft
A funnel cloud was sighted near the Charlottesville-Albemarle Airport. The storm was accompanied by strong winds and heavy rain, but apparently no damage occurred.									
Farmville (SE)	13	Evening	6	30	0	0	5	0	Tornado (F1)
This tornado formed near the town of Rice in northeastern Prince Edward County, damaging barns, dwellings and trees. It then moved in an east-northeasterly direction through the extreme northwest corner of Nottoway County and into southwestern Amelia County where it was observed by one witness. There, the small tornado heavily damaged a mobile home and storage shed, and caused around \$20,000 loss to buildings and equipment on a nearby farm.									
Charlotte County	13	1645EST	5	30	0	0	5	0	Tornado (F2)
A small, but rather intense tornado struck in the Drakes Branch community, where minor damage was reported. It continued east-northeastward to a farmstead near Keysville. At this location huge trees were lifted out of the ground by the roots, other trees were snapped off and every vehicle on the farm was damaged, including a new tractor that was carried 50 feet into the field. In addition, a section of the chimney dropped through the farmhouse and landed in the basement.									
Fauquier County	13	1700EST			0	0	0	0	Funnels Aloft
Three funnel clouds were seen in the vicinity of Warrenton. One of these apparently reached close to the ground. The report follows:									
Warrenton (nr)	13	1700EST	1/4	10	0	0	3	0	Tornado (F0)
Apparently one of the above-mentioned funnels aloft reached close enough to the ground to cut a 500-600 foot swath through a wooded area. A barn was also damaged.									
Lake of the Woods	13	1754EST	1	40	0	0	6	6	Tornado (F2)
Tornado, observed by at least two people, moved northeastward along the west side of the lake. Three homes were almost totally destroyed, and a dozen others damaged. In addition, several automobiles were struck by debris, the recreation center had most of the roof blown off and many boats were torn from their moorings and strewn about. Fortunately, only minor injuries were reported.									
Quantico (SS)	13	1815EST			0	0	0	0	Waterspouts
An eyewitness near the community of Widewater reported seeing waterspouts on the Potomac River. Two of these were small, but a third one was of significant size.									
Fairfax County	13	1855EST	short narrow		0	0	?	0	Tornado (F0)
A tornado touched down briefly in the Fairfax City area.									
Falls Church	13	1912EST	7	40	0	0	6	0	Tornado (F2)
A tornado struck Falls Church where many homes were heavily damaged on one street, trucks were overturned, and several other homes and buildings were damaged as the funnel moved northeastward into the McLean area.									
45 WASHINGTON									
2 East of Cheney (Spokane County)	17	1630 PST	0.5	50	0	0	4	0	Tornado (F1)
A tornado blew down several 30 foot tall trees, damaged a tool shed and blew down power lines. The tornado was confirmed by the National Weather Service in Spokane.									
46 WEST VIRGINIA — NONE REPORTED									
47 WISCONSIN									
Wausau, Marathon County	05	1640CST			0	0	3	0	Electrical
Lightning struck an ungrounded TV antenna and exploded a 3 foot opening in the northwest portion of a house causing extensive damage.									
Berlin, Green Lake County	11	1930CST			0	1	0	0	Electrical
A woman was injured when struck by lightning while talking on the telephone. She suffered a burn on her left ear and cheek and hurt her spine when the bolt knocked her several feet away from the phone.									
48 WYOMING — NONE REPORTED									
49 ALASKA, Northern									
Kotzebue Sound	05-	1100 to 06 0200 BST			0	0	6	0	Coastal flood
A vigorous fall storm tracked northeast from Bering Strait to the eastern Chukchi Sea. This low was formerly the west Pacific Typhoon Forrest, which went extratropical as it moved northeast off the coast of Japan. After the low was well into the eastern Chukchi Sea on Oct. 5, a cold front swept over Kotzebue Sound from the west, and the southwest maritime flow over the area shifted to a moderately strong westerly flow of unstable air. Sea level rose from 6 to 8 feet at Kotzebue, and probably more than this at Shishmaref. Coastal flooding occurred at Shishmaref, Kotzebue and Shishalik. At Shishmaref, a building was destroyed, and up to 50 feet of shoreline was eroded on both sides of the island. At Kotzebue, large sections of Front Street were eroded, and several families evacuated from the area. At Shishalik, several families were evacuated from seaside cabins. Total damage was estimated at just over \$500,000. The peak wind at Kotzebue was 47 miles an hour.									
Eastern Arctic Coast	06-	1800- 07 0600 AST			0	0	?	0	High wind
The westerly flow which surged over Kotzebue Sound Oct. 5 swept over the eastern Arctic coast late Oct. 6 and strengthened. There were brief blizzard conditions at Barter Island on the evening of the 6th (less than 2 hours), accompanied by high winds. The peak wind at Barter Island was west at 58 knots. No high wind or blizzard was reported at Prudhoe Bay. No damage was reported.									
Brooks Range		08			0	0	2	0	Avalanche
Heavy snowfall in the central Brooks Range earlier in the month culminated in an avalanche at Chandalar Camp, on the Pipeline haul road, on Oct. 8. The camp is just south of Atigun Pass. The avalanche was reported to be 6 feet deep and 20 to 30 yards wide. It was evidently a dry snow avalanche. Damages were limited to snow clearing costs. The road was clear before the morning of Oct. 10.									
Bering Strait	08-	09			0	0	5	0	Strong winds and heavy seas
A large low pressure system moved through the western Aleutians on the morning of Oct. 8, and reached a point just west of St. Lawrence Island on the evening of Oct. 9. A brief period of southeast gales resulted over Bering Strait on Oct. 8, followed by lighter southeast winds, but continued heavy seas — estimated up to 12 feet — on Oct. 9. A tug boat, the "Muktuk", 50 to 60 feet in length, was driven aground just offshore of Little Diomed Island, in Bering Strait, on the morning of Oct. 8. Heavy seas and wave action caused the tug to sink on Oct. 9. All hands got ashore without injury.									
Eastern Interior		09			0	0	?	0	Heavy snow over higher terrain
A broad, active weather front ahead of a large low in the Bering Sea (see item immediately preceding), swept across the Interior from the west on Oct. 9. While snowfall in the Interior valleys was not heavy (some of it melted), snowfall in the higher elevations generally exceeded 6 inches. The higher elevations of the Taylor and Steese Highways were closed to traffic by the morning of Oct. 10, due to the heavy snowfall.									
Brooks Range		16 evening			0	0	2	0	Avalanche
A period of around a week of frequent snowfall, and strong winds in the mountains, culminated in an avalanche near Chandalar Camp, just south of Atigun Pass, on the Trans-Alaska Pipeline haul road, on the evening of Oct. 16. The avalanche was 10 feet deep and 75 feet long, according to highway department reports. Damages were limited to snow clearing costs. The road was cleared in a few hours.									
49 ALASKA, Southern									
Southwest	06	0500- 0700BST			0	?	5	0	High Wind
A small but intense low moving south across the Yukon-Kuskokwim Delta brought high winds to a large area of southwestern Alaska. Winds gusted to 75 mph at Cape Romanzof and to 68 mph at Bethel. There were unofficial reports of stronger winds. In the Bethel area power lines were downed and a number of structures sustained roof damage. A 40 foot house trailer was turned on its back. The village of Chevak was also hit hard by the storm.									
South Coast	27	1600 AST			8	1	6	0	High Wind & Seas
A strong storm in the Gulf of Alaska brought winds to 70 mph and seas to 30 feet off the southern Alaskan coast near Yakutat. An ocean-going tug pulling two barges capsized with the loss of 8 of its 9 member crew.									

STORM DATA AND UNUSUAL WEATHER PHENOMENA

OCTOBER 1983

PLACE	DATE	TIME - LOCAL STANDARD	LENGTH OF PATH (MILES)	WIDTH OF PATH (YARDS)	NO. OF PERSONS		ESTIMATED DAMAGE		CHARACTER OF STORM	PLACE	DATE	TIME - LOCAL STANDARD	LENGTH OF PATH (MILES)	WIDTH OF PATH (YARDS)	NO. OF PERSONS		ESTIMATED DAMAGE		CHARACTER OF STORM
					KILLED	INJURED	PROPERTY	CROPS							KILLED	INJURED	PROPERTY	CROPS	
ALASKA, Southern																			
South Central	31	1800-2100 AST			0	?	3	0	Heavy Snow										
<p>A cold front moving through the area brought 6 inches of snow to the Anchorage area with 4 inches falling in only 2 hours. The snow falling during the morning rush hour caused numerous traffic accidents and delays.</p>																			
ALASKA, Southeastern																			
Ketchikan Area		17-18			0	0	2	0	High Winds, Heavy Rain & Local Flooding										
<p>The major damage of this storm was the sinking of a small boat in Bar Harbor. Winds gusting to 52 MPH caused two power outages in the Ketchikan area.</p>																			
Juneau Area		27			0	0	5	0	High Winds										
<p>Winds gusting to about 70 MPH came through Juneau during the late evening hours of October 27. Numerous trees and branches were downed, one small plane at Juneau International Airport was flipped over, a car port was collapsed, and numerous small out buildings, including the dugout at the local ball field, were blown away.</p>																			
50 HAWAII																			
Hawaii All Islands		15-20			0	0	4	0	Wind, surf										
<p>Remnants of Hurricane Raymond crossed the central portion of the Hawaiian Chain moving westward as a weak tropical depression on the 20th bringing beneficial rains to the islands from Maui northward. Six days earlier Raymond had been a powerful hurricane with 135 MPH sustained winds located about 1000 miles east of the state and moving rapidly toward the Islands. Raymond, however, stalled to the east of the Islands and weakened rapidly. High surf around 15 feet did minor damage along the black sands beaches of Kalapana and Kaimu on the east coast of the Big Island and near Hana, Maui on the 15-16th. Strong winds gusting near 45 MPH during the afternoon hours of the 19th did minor damage on the Big Island. Some locally gusty winds also occurred on the other islands on the 20th. The fishing vessel Crescent located well east of the Islands on the 17th to the north of the center of Raymond lost her rigging in high seas and 60 knot winds.</p>																			
Hawaii		26 Evening			0	0	3	0	Rain										
<p>Heavy rains in the 3 to 6 inch range along the Hamakua coast of the Big Island caused several large rock slides and temporarily blocked roadways. This rain accompanied the passage of the first cold front of the season through the state.</p>																			
51 PUERTO RICO ————— NONE REPORTED																			
52 VIRGIN ISLANDS ————— NONE REPORTED																			
53 PACIFIC ————— NONE REPORTED																			

STORM SUMMARY

OCTOBER 1983

STATE	TORNADOES					HAILSTORMS				WINDSTORMS				LIGHTNING			FLOODING				HEAVY SNOWSTORMS AND BLIZZARDS				ICE STORMS				ALL OTHER		
	NUMBER	DAYS	DEATHS	INJURIES	DAMAGE	DEATHS	INJURIES	DAMAGE		DEATHS	INJURIES	DAMAGE		DEATHS	INJURIES	DAMAGE		DEATHS	INJURIES	DAMAGE		DEATHS	INJURIES	DAMAGE		DEATHS	INJURIES	DAMAGE			
								PROP. ERTY	CROPS			PROP. ERTY	CROPS			PROP. ERTY	CROPS			PROP. ERTY	CROPS			PROP. ERTY	CROPS			PROP. ERTY	CROPS		
Alabama																															
Arizona								4																							
Arkansas													4																		
California																															
Colorado													3																		
Connecticut																															
Delaware																															
Florida													4																		
Georgia	1	1		6	5								5																		
Idaho																															
Illinois																															
Indiana												2																			
Iowa															1	3															
Kansas								2																							
Kentucky																		4													
Louisiana																															
Maine																															
Maryland & DC	1	1			4						16	5																			
Massachusetts													3																		
Michigan										1	1	4																			
Minnesota																															
Mississippi																															
Missouri								6	6		6	5			?	?															
Montana																															
Nebraska									3																						
Nevada																															
New Hampshire																															
New Jersey																															
New Mexico																		7													
New York										1	2	5					4														
North Carolina											1	4																			
North Dakota																															
Ohio											1	5																			
Oklahoma	2	2			5			?	?		1	6			1	16	5														
Oregon												4																			
Pennsylvania													4																		
Rhode Island																															
South Carolina																															
South Dakota											4																				
Tennessee																															
Texas								4	5			6	4																		
Utah																															
Vermont																															
Virginia	6	1		6	6							6																	4		
Washington	1	1			4																										
West Virginia																															
Wisconsin																															
Wyoming																															
Alaska																															
Hawaii																															
Pacific																															
Puerto Rico																															
Virgin Islands																															
CORRECTIONS																															
SEPTEMBER 1983																															
South Carolina																															
LATE REPORTS																															
JULY 1983																															
Louisiana																															
Oregon																															
Texas																															

STORM DATA AND UNUSUAL WEATHER PHENOMENA

LATE REPORTS

LATE REPORTS

PLACE	DATE	TIME - LOCAL STANDARD	LENGTH OF PATH (MILES)	WIDTH OF PATH (YARDS)	NO. OF PERSONS		ESTIMATED DAMAGE		CHARACTER OF STORM
					KILLED	INJURED	PROPERTY	CROPS	

PLACE	DATE	TIME - LOCAL STANDARD	LENGTH OF PATH (MILES)	WIDTH OF PATH (YARDS)	NO. OF PERSONS		ESTIMATED DAMAGE		CHARACTER OF STORM
					KILLED	INJURED	PROPERTY	CROPS	

16 LOUISIANA

JULY 1983

St. Tammany Parish	01 1500CST	1							Lightning Aman was struck and killed by lightning in the town of Pearl River. He was mowing grass on a tractor at the time.
Livingston Parish	01 1605CST								Hail Hail reportedly 1.75 inches in diameter was observed a short distance northwest of Livingston during a thunderstorm. No damage was reported.
Tangipahoa Parish	03 1510CST								Funnel Clouds Two funnel clouds were reported over Lake Pontchartrain near the shoreline of Tangipahoa Parish.
Vermillion Parish	04 1940CST								Funnel Cloud A funnel cloud was reported by state police 4 miles south of Gueydon.
St. Landry Parish	04 2000CST					5			Lightning Lightning struck a sawmill near Eunice starting a fire which caused an estimated \$250,000 in damage.
Iberia Parish	05 1010CST			1	1				Lightning One youth was killed and a man injured in the northern portion of Iberia Parish by lightning. They were attempting to move a vehicle that was stuck in mud.
Caddo Parish	18 2010CST						3		Lightning Lightning struck and damaged a church in Shreveport.
Sabine Parish	20 1400CST						?		Lightning Lightning struck two oil storage tanks 5 miles northwest of Many causing both tanks to burn. No estimate of damage available.

32 NORTH DAKOTA

JULY 1983

Golva (Golden Valley County)	17 2130CST	0	0	5	5				Hail Hail as large as golf balls damaged crops, damaged roofing and siding, and broke windows.
---------------------------------	------------	---	---	---	---	--	--	--	---

35 OREGON

JULY 1983

Butte Valley, Klamath County	5	0	0	?	?				Hailstorm
The Dalles, Wasco County	7 1150PST								Windstorm
Willamette Valley, Cascades, and Central Oregon	16- 19								Lightning Intense electrical storms touched off fires and caused widespread power outages.
Deschutes River	16 1830PST							0	Lightning, Flash Flood Lightning caused a malfunction in the Pelton Dam control circuits, increasing the outflow from 4600 cfs to over 10,000 cfs, resulting in 8-10 foot rises for up to 24 miles down river. Flooded camping areas and damaged vehicles were reported as well as some damage to boat docks just below the dam.
Pilot Rock, Umatilla County	23								Hailstorm Thunderstorms occurring in the Blue Mountain foothills dumped quarter-size hail, threshing out wheat fields east of Pilot Rock. Storms also caused power outages, some flash flooding and heavy winds.
Lake County	30- 31								Lightning Severe lightning storms ignited several brush and forest fires.
Madras, Jefferson County	31 1730PST							6	Hailstorm Rain and hail left in their path \$600,000 crop damage.

38 SOUTH CAROLINA

SEPTEMBER 1983

Near New Zion, SC Clarendon County	21 1400 EST	1	3	0	0				Lightning Man on large metal trailer in open field loading cucumbers was struck by lightning and killed. Three people in the field helping load cucumbers were knocked down or shocked.
---------------------------------------	-------------	---	---	---	---	--	--	--	--

41 TEXAS, Northern

JULY 1983

Fannin County	01 1643CST- 1800CST	0	0	3	?				Hail, Wind Thunderstorm winds estimated at 40 to 50 MPH and marble size hail struck northern Fannin County at 1643CST. Spotters near Bonham experienced golfball size hail and 65 MPH winds at 1725 CST, which uprooted trees and caused scattered property damage. Between 1715 and 1800CST, 2 inches of rain fell in Bonham, with some low-lying spots flooded for a brief time.
Hunt County	01 1840CST								Hail Spotters reported 3/4 inch hail in northern sections of the county.
Foard County Hardeman County	01 2000CST- 2030CST								Hail A thunderstorm, moving east along the Foard/Hardeman county line, produced hail to golfball size.
Wilbarger County	01 2100CST- 2200CST								Hail, Wind Golfball size hail and 60 MPH winds struck the area 15 miles southwest of Vernon.
Collin County	05 0358CST					4		0	Winds Winds estimated at near 60 MPH blew down a cinder block home at Sanger.
Taylor County	15 1545CST 1600CST- 1830CST					4		0	Funnel, Wind, Heavy rains Spotters reported a funnel 3 miles north of Abilene at 1545CST. The funnel receded into the parent cloud without touching down. An intense thunderstorm moved into the Abilene area at 1600CST, producing high winds and heavy rains. The Weather Service Office received 78 MPH winds at 1629CST, and 1.5 inches rain in the following 15 minutes. Fort Phantom received 5.5 inches rain from the slow moving storm, with most of the area reporting 2 to 3 inches during the two hour period. Most of the flooding was in low-lying areas and streets, with one woman being swept away after leaving her stalled car. She was rescued downstream and was not injured. An Abilene Christian University auditorium sustained \$10,000 in damages after waters flooded the lower sections.

STORM DATA AND UNUSUAL WEATHER PHENOMENA

CORRECTIONS

PLACE	DATE	TIME - LOCAL STANDARD	LENGTH OF PATH (MILES)	WIDTH OF PATH (YARDS)	NO. OF PERSONS		ESTIMATED ¹ DAMAGE		CHARACTER OF STORM
					KILLED	INJURED	PROPERTY	CROPS	
<p>11 ILLINOIS</p> <p><u>JUNE 1983</u></p> <p>DELETE: WIND</p> <p>ADD: WIND AND FUNNELS</p> <p>Northern and Central sections</p>					0	0	4	?	<p>in Central Sections from 1500 to 1645CST on June 14 (page 14).</p> <p>listed below:</p> <p style="margin-left: 20px;">14 1230 to 1645CST 0 0 4 ? Wind and Funnel</p> <p>As thunderstorms came into the northern and central sections of Illinois, winds as high as 43 knots caused damage to tree limbs and power lines. A funnel was sighted in Woodstock, McHenry County at 1300. The powerful winds damaged several buildings in DeKalb County at 1322. A truck was turned around on Route 173 near Hebron, McHenry County, at 1344. Two funnels were sighted at 1446 on the south side of Chicago, Cook County. At 1630 the winds caused power failures in parts of Peoria, Peoria County.</p>
<p>32 NORTH DAKOTA</p> <p><u>AUGUST 1983</u></p> <p>TIME CHANGE:</p> <p>Janestown (Stutsman County)</p>					0	0	3	0	<p>The time for the following entry should be corrected as shown:</p> <p>24 2256CST 0 0 3 0 Hail</p> <p>Golfball sized hail broke windows on a grain elevator.</p> <p>(Time corrected from 2356CST)</p>

REFERENCE NOTES

Storm damage categories are from 1 to 9 as follows:

- 1 Less than \$50
- 2 \$50 to \$500
- 3 \$500 to \$5,000
- 4 \$5,000 to \$50,000
- 5 \$50,000 to \$500,000
- 6 \$500,000 to \$5 Million
- 7 \$5 Million to \$50 Million
- 8 \$50 Million to \$500 Million
- 9 \$500 Million to \$5 Billion

- * Miles instead of yards
- ** Yards instead of miles
- @ Includes heavy sleet storm
- # Freezing drizzle and freezing rain, commonly known as glaze
- ≠ Not received or incomplete
- o/c Under Estimated Damage, Property/Crops, indicates crop damage amount is included in the figure given

Definition of Fujita Tornado Scale (F scale)

(F0) Gale tornado (40-72 mph): Light damage
Some damage to chimneys; break branches off trees; push over shallow-rooted trees; damage sign boards.

(F1) Moderate tornado (73-112 mph): Moderate damage
The lower limit (73 mph) is the beginning of hurricane wind speed; peel surface off roofs; mobile homes pushed off foundations or overturned; moving autos pushed off the roads.

(F2) Significant tornado (113-157 mph): Considerable damage
Roofs torn off frame houses; mobile homes demolished; boxcars pushed over; large trees snapped or uprooted; light-object missiles generated.

(F3) Severe tornado (158-206 mph): Severe damage
Roofs and some walls torn off well-constructed houses; trains overturned; most trees in forest uprooted; heavy cars lifted off ground and thrown.

(F4) Devastating tornado (207-260 mph): Devastating damage
Well-constructed houses leveled; structure with weak foundation blown off some distance; cars thrown and large missiles generated.

(F5) Incredible tornado (261-318 mph): Incredible damage
Strong frame houses lifted off foundations and carried considerable distance to disintegrate; automobile-sized missiles fly through the air in excess of 100 m; trees debarked; incredible phenomena will occur.

(F6-F12) (319 mph to Mach 1, the speed of sound):
The maximum wind speeds of tornadoes are not expected to reach the F6 wind speeds.

(F0+F1) *Weak Tornado*
(F2+F3) *Strong Tornado*
(F4+F5) *Violent Tornado*

From J. Atmos. Sci., August 1981, p. 1517-1519



USCOMM-NOAA-ASHEVILLE, NC 1984-3050