

MARCH 1983

VOLUME 25

NUMBER 3

STORM DATA



"I CERTIFY THAT THIS IS AN OFFICIAL PUBLICATION OF THE NATIONAL OCEANIC AND ATMOSPHERIC ADMINISTRATION AND IS COMPILED FROM INFORMATION RECEIVED AT THE NATIONAL CLIMATIC DATA CENTER, ASHEVILLE, N.C. 28801"

L. Ray Hoxit
ACTING DIRECTOR

NATIONAL CLIMATIC DATA CENTER

This publication is funded by the
National Oceanic and Atmospheric Administration and the Federal Emergency Management Agency

noaa

NATIONAL OCEANIC AND
ATMOSPHERIC ADMINISTRATION

NATIONAL ENVIRONMENTAL SATELLITE,
DATA, AND INFORMATION SERVICE

NATIONAL CLIMATIC DATA CENTER
ASHEVILLE, N.C.

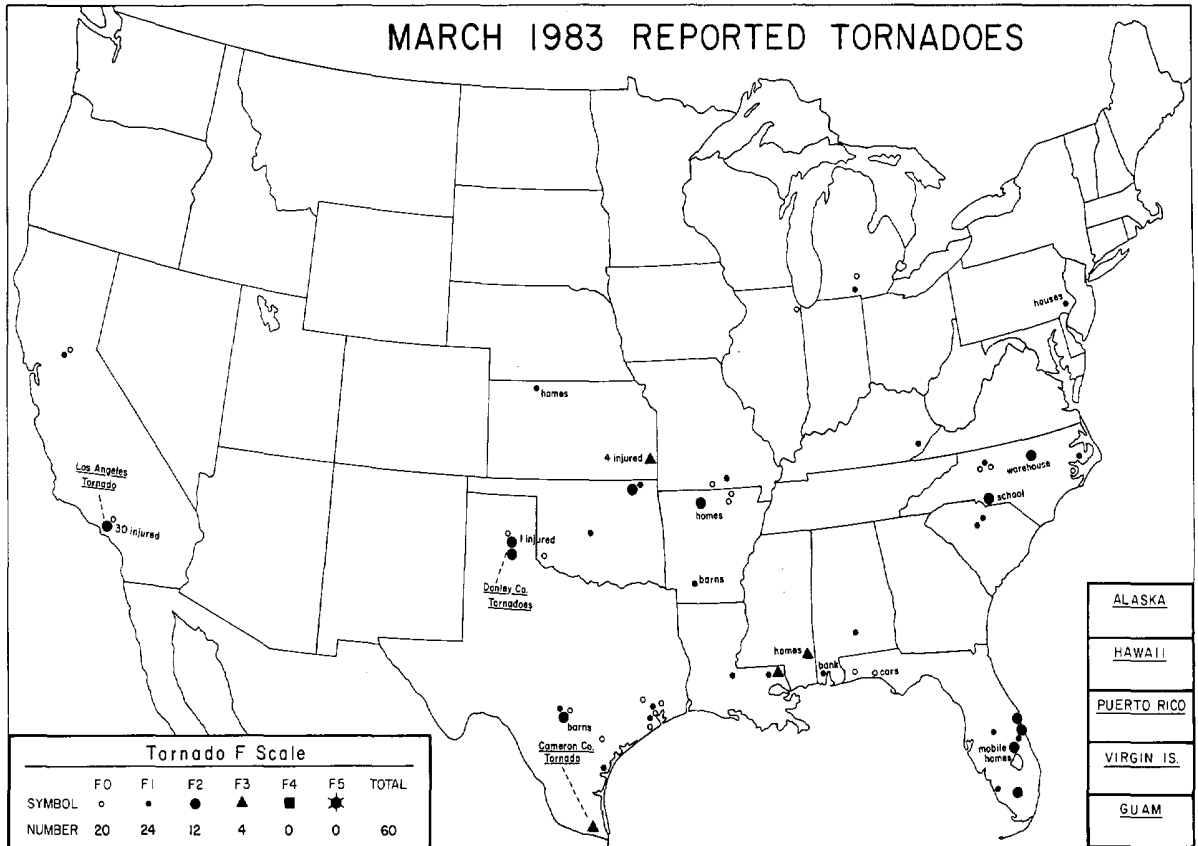
C O N T E N T S

	<u>Page</u>
Outstanding Storms of the Month.....	3
Storm Data and Unusual Weather Phenomena.....	10
Storm Summary.....	26
Reference Notes.....	27
"F" Scale Definitions.....	27

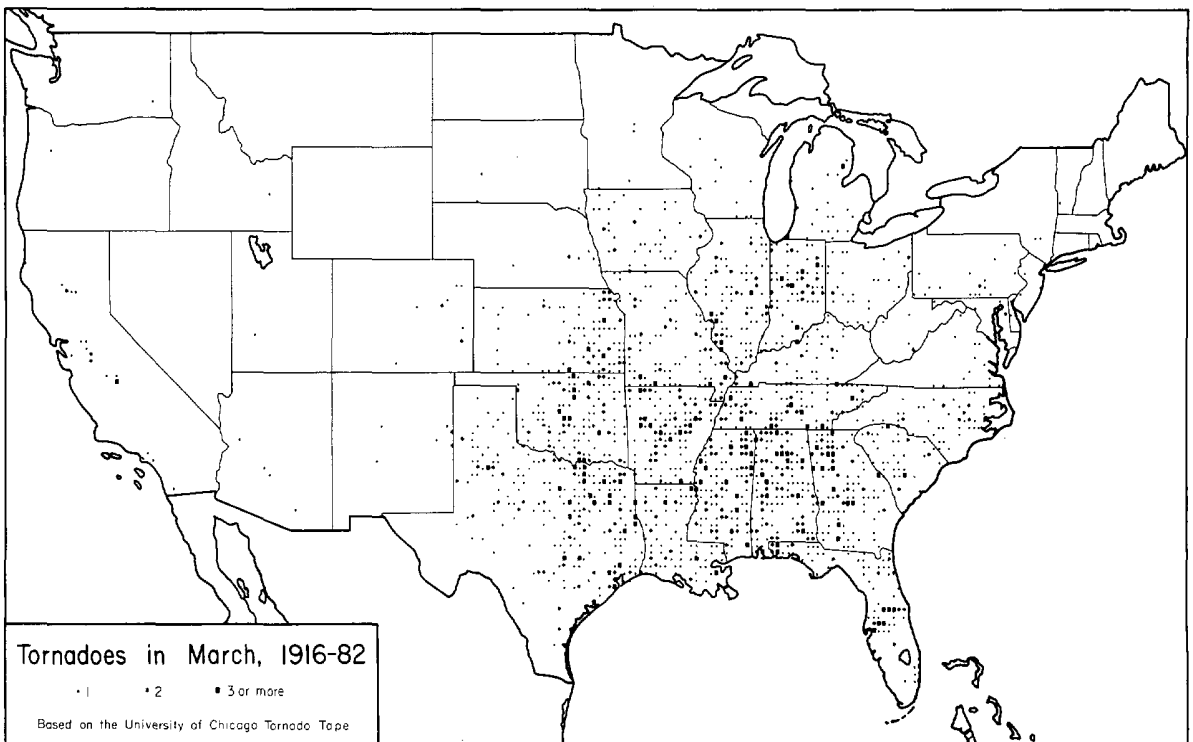
NOTE: The section on Outstanding Storms of the Month is prepared and edited by Professor T. Theodore Fujita, University of Chicago. The narrative descriptions of Storms by State and Summaries of Hurricanes and Tropical Storms are prepared by the National Weather Service. The National Climatic Data Center compiles the statistics on deaths, injuries, and damage. This publication contains our best information on storms, but, due to the difficulties inherent in collection of this type of data, it is not all-inclusive. Late Reports and Corrections will be carried quarterly.

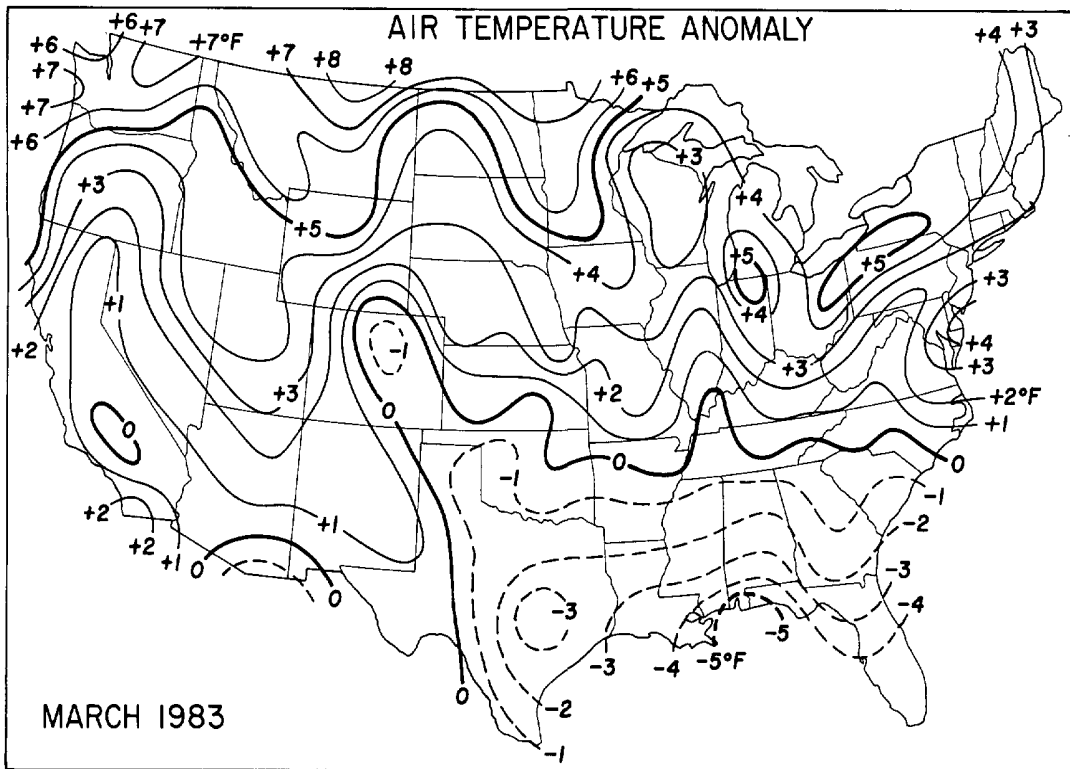
STORM DATA - (ISSN 0039-1972) is published monthly. Subscription, pricing, and ordering information is available from: Publications Section (E/CC413), The National Climatic Data Center, National Environmental Satellite, Data, and Information Service, NOAA, Federal Building, Asheville, NC 28801-2696.

OUTSTANDING STORMS OF THE MONTH



<ul style="list-style-type: none"> ● COMPLETE REPORT RECEIVED ○ PRELIMINARY REPORT RECEIVED ○ REPORT NOT RECEIVED <p>(N) northern (W) western (S) southern (C) central (E) eastern (O) coastal (SE) southeastern</p>	<table style="width: 100%; text-align: center;"> <tr> <td>● 1AL</td><td>● 7DE</td><td>● 14KS</td><td>● 21MN</td><td>● 28NJ</td><td>● 33OH</td><td>● 39SD</td><td>● 44VA</td><td>● 49AK(SE)</td> </tr> <tr> <td>● 2AZ</td><td>● 8FL</td><td>● 15KY</td><td>● 22MS</td><td>● 29NM</td><td>● 34OK</td><td>● 40TN</td><td>● 45WA</td><td>● 50HI</td> </tr> <tr> <td>● 3AR</td><td>● 9GA</td><td>○ 16LA</td><td>● 23MO</td><td>● 30NY(O)</td><td>○ 35OR</td><td>○ 41TX(N)</td><td>● 46WV</td><td>● 51PR</td> </tr> <tr> <td>● 4CA(N)</td><td>● 10ID</td><td>● 17ME</td><td>● 24MT</td><td>● 30NY(C)</td><td>● 36PA(E)</td><td>● 41TX(S)</td><td>● 47WI</td><td>● 52VI</td> </tr> <tr> <td>● 4CA(S)</td><td>● 11IL</td><td>● 18MD</td><td>● 25NE</td><td>● 30NY(W)</td><td>● 36PA(W)</td><td>● 41TX(W)</td><td>● 48WY</td><td>● 53PC</td> </tr> <tr> <td>● 5CO</td><td>● 12IN</td><td>● 19MA</td><td>● 26NV</td><td>● 31NC</td><td>● 37RI</td><td>● 42UT</td><td>● 49AK(N)</td><td></td> </tr> <tr> <td>● 6CT</td><td>● 13IA</td><td>● 20MI</td><td>● 27NH</td><td>● 32ND</td><td>● 38SC</td><td>● 43VT</td><td>● 49AK(S)</td><td></td> </tr> </table>	● 1AL	● 7DE	● 14KS	● 21MN	● 28NJ	● 33OH	● 39SD	● 44VA	● 49AK(SE)	● 2AZ	● 8FL	● 15KY	● 22MS	● 29NM	● 34OK	● 40TN	● 45WA	● 50HI	● 3AR	● 9GA	○ 16LA	● 23MO	● 30NY(O)	○ 35OR	○ 41TX(N)	● 46WV	● 51PR	● 4CA(N)	● 10ID	● 17ME	● 24MT	● 30NY(C)	● 36PA(E)	● 41TX(S)	● 47WI	● 52VI	● 4CA(S)	● 11IL	● 18MD	● 25NE	● 30NY(W)	● 36PA(W)	● 41TX(W)	● 48WY	● 53PC	● 5CO	● 12IN	● 19MA	● 26NV	● 31NC	● 37RI	● 42UT	● 49AK(N)		● 6CT	● 13IA	● 20MI	● 27NH	● 32ND	● 38SC	● 43VT	● 49AK(S)	
● 1AL	● 7DE	● 14KS	● 21MN	● 28NJ	● 33OH	● 39SD	● 44VA	● 49AK(SE)																																																								
● 2AZ	● 8FL	● 15KY	● 22MS	● 29NM	● 34OK	● 40TN	● 45WA	● 50HI																																																								
● 3AR	● 9GA	○ 16LA	● 23MO	● 30NY(O)	○ 35OR	○ 41TX(N)	● 46WV	● 51PR																																																								
● 4CA(N)	● 10ID	● 17ME	● 24MT	● 30NY(C)	● 36PA(E)	● 41TX(S)	● 47WI	● 52VI																																																								
● 4CA(S)	● 11IL	● 18MD	● 25NE	● 30NY(W)	● 36PA(W)	● 41TX(W)	● 48WY	● 53PC																																																								
● 5CO	● 12IN	● 19MA	● 26NV	● 31NC	● 37RI	● 42UT	● 49AK(N)																																																									
● 6CT	● 13IA	● 20MI	● 27NH	● 32ND	● 38SC	● 43VT	● 49AK(S)																																																									



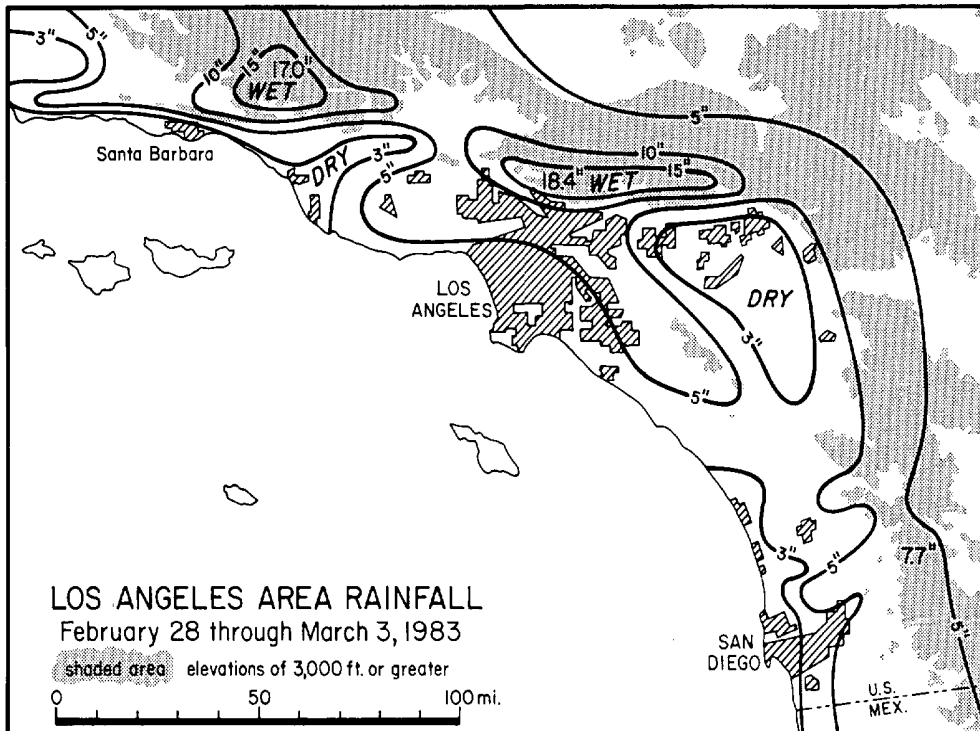


---Data base from NOAA/USDA Joint Agricultural Weather Facility

1. HEAVY RAIN, TORNADOES and HIGH WINDS in
SOUTHERN CALIFORNIA on February 28 - March 3, 1983

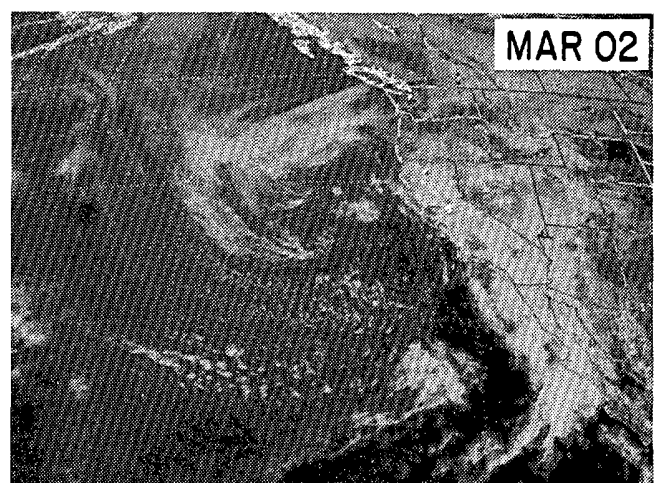
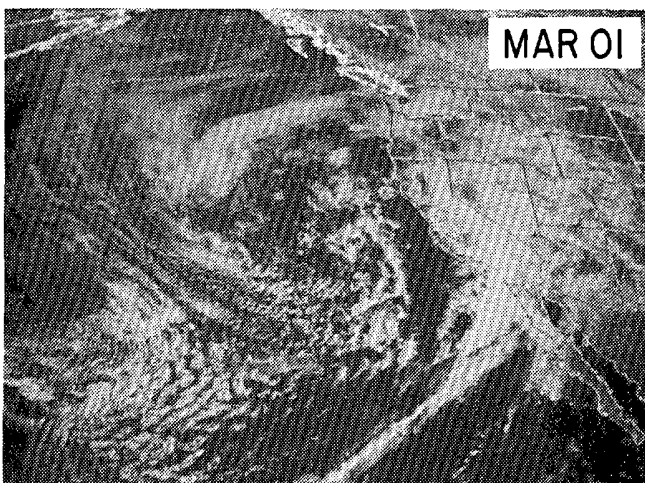
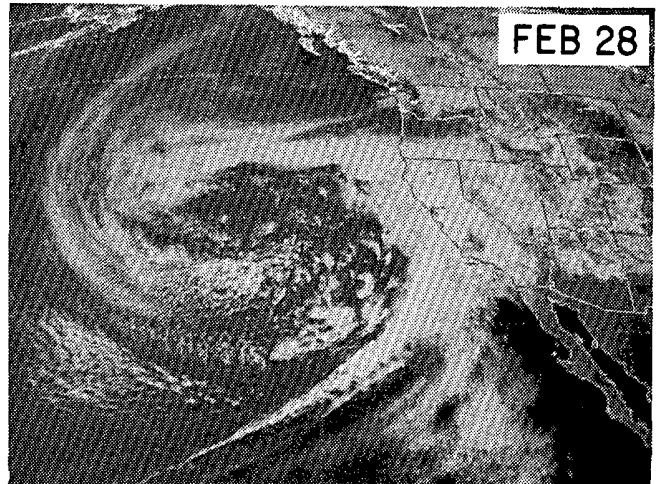
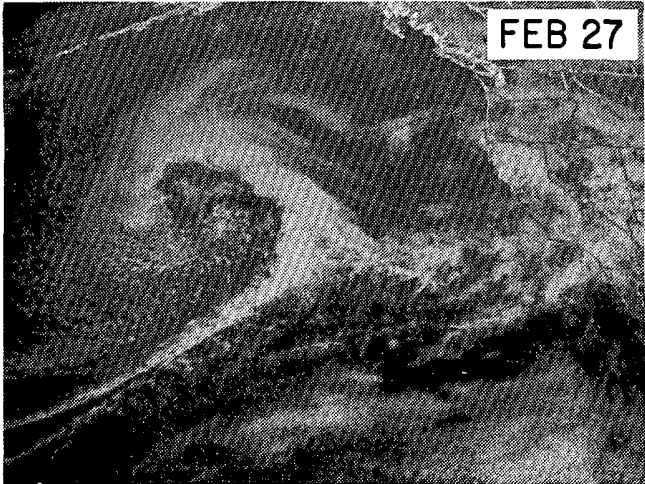
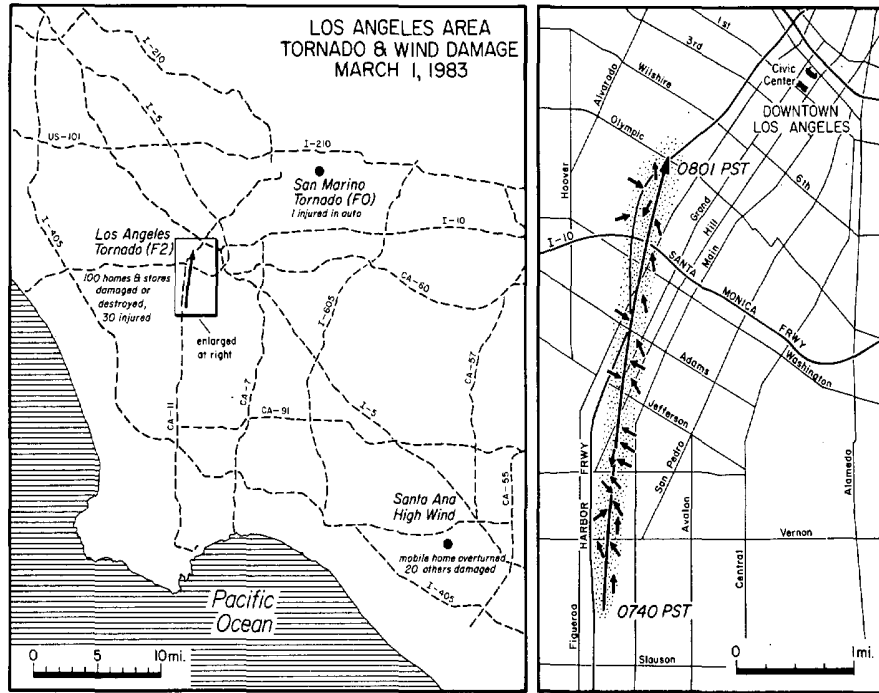
An intense low-pressure system in the eastern Pacific Ocean produced high winds and heavy rains in Southern California from February 28th to March 3rd, causing widespread beach erosion and some flooding. The rainfall pattern in the Los Angeles area, mapped below, is shown to have been greatly enhanced by topographic effects.

---Map from NWSFO Los Angeles, California.



SOUTHERN CALIFORNIA STORM .----Continued

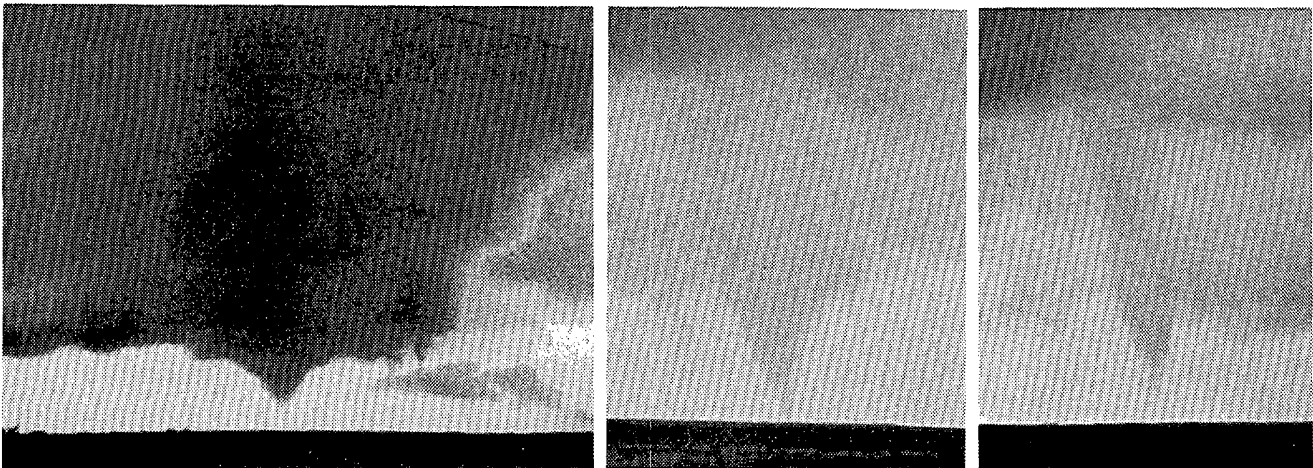
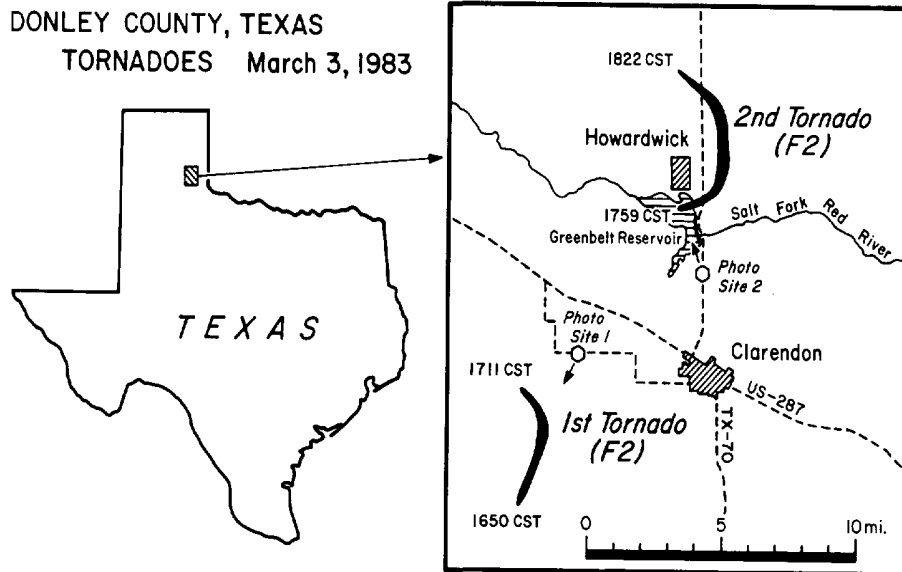
As a strong cold front from the storm moved through the Los Angeles area on the morning of March 1st, two tornadoes were spawned, one each in south-central Los Angeles (F2) and San Marino (F0). Also; high winds damaged mobile homes in Santa Ana (see map below). ---Maps from NWSFO Los Angeles, California.



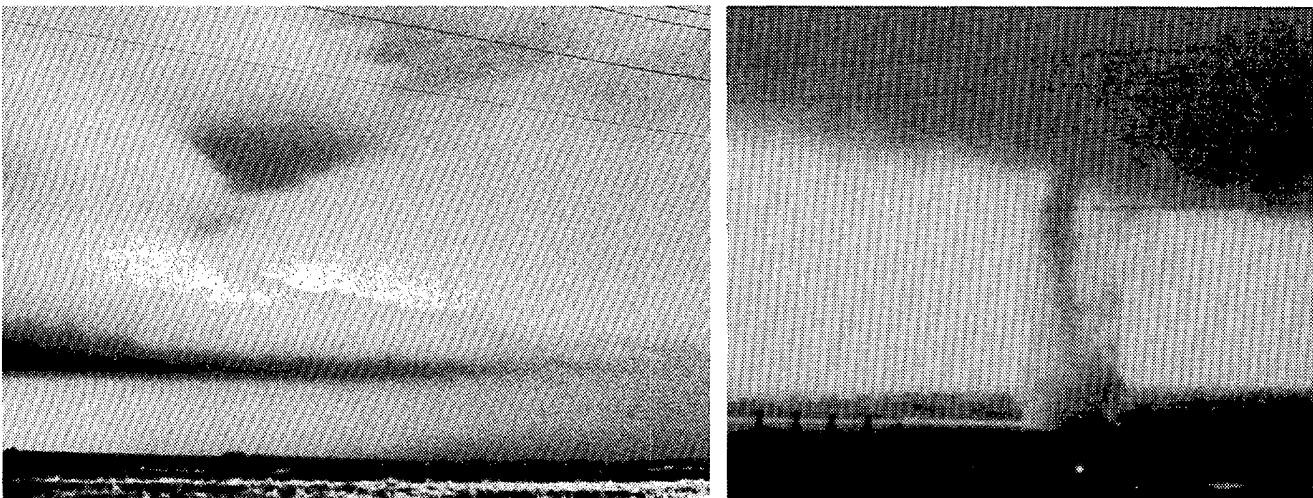
A daily sequence of visible satellite pictures show the Pacific storm at 1245 PST (2045 GMT) of each day as it buffeted the California coast. ---Photos from NESDIS.

2. TORNADOES in DONLEY COUNTY, TEXAS on March 3, 1983

Two tornadoes were observed and photographed by the Texas Tech Tornado Intercept Team in Donley County, Texas on March 3rd (see map below). The second of the well-documented tornadoes touched down on Greenbelt Reservoir, creating a sheath of water around the base of the tornado. ---Map from Texas Tech University.



From left to right are three photos of the Clarendon Tornado (#1) taken at 1658, 1706 and 1710 CST respectively. The view is looking SW from photo site 1 (see map).



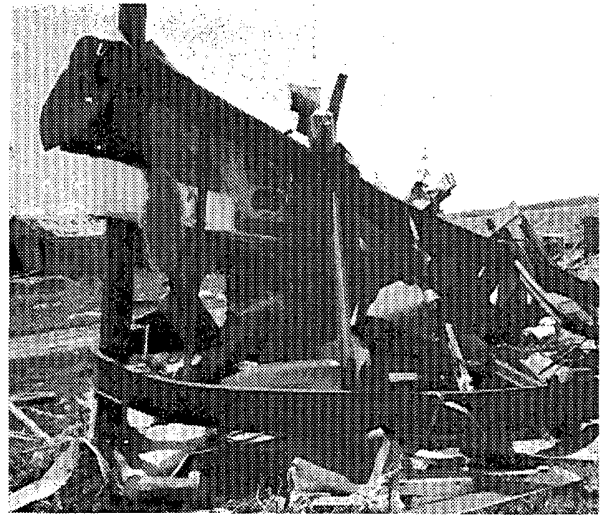
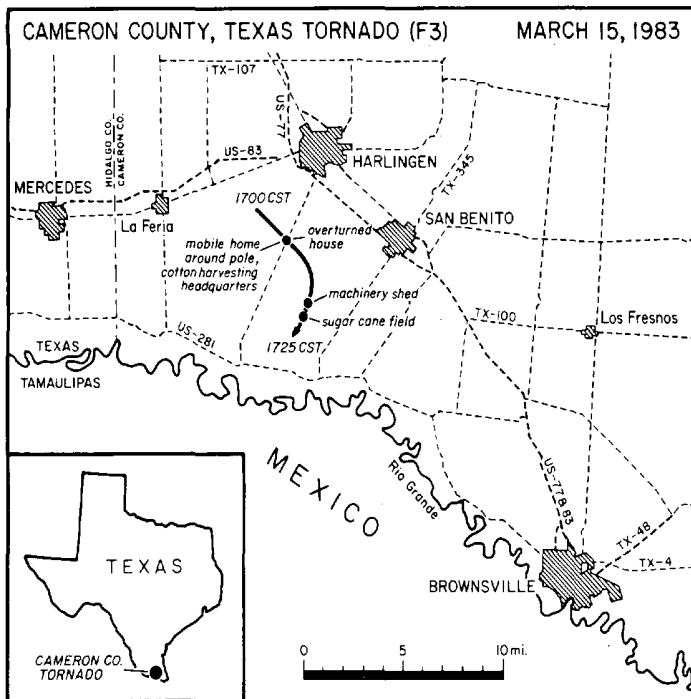
The inflow band viewed at 1743 CST looking northwest.

The Howardwick Tornado on Greenbelt Reservoir at 1800 CST looking NW from photo site 2.

---All photos by Tim Marshall, Texas Tech University.

3. TORNADO in CAMERON COUNTY, TEXAS on March 15, 1983

The strongest documented tornado to ever occur in the Lower Rio Grande Valley struck Cameron County, Texas on March 15th causing damage rated up to F3 in force. The tornado moved southeast at about 15 mph and veered SSW during the final third of its 6.1 mile path (see map below). The parent thunderstorm moved east at 23 mph.



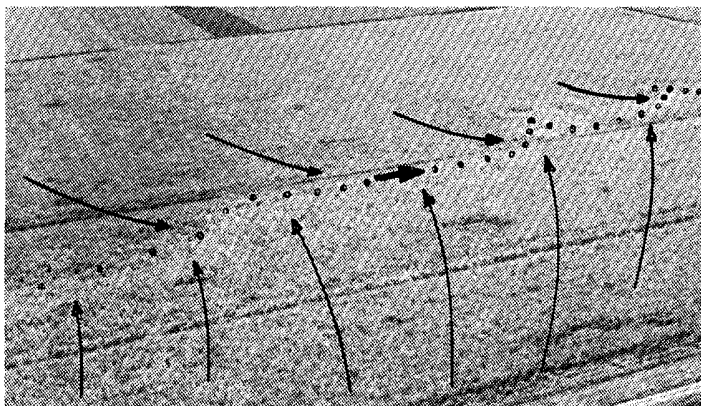
Frame and remnants of a mobile home wrapped around a power pole.



Cotton harvesting headquarters where many farm vehicles were damaged.



Overturned house which originally sat on the concrete pillars in the foreground.



Convergence pattern and looping marks in a sugar cane field near end of tornado path.

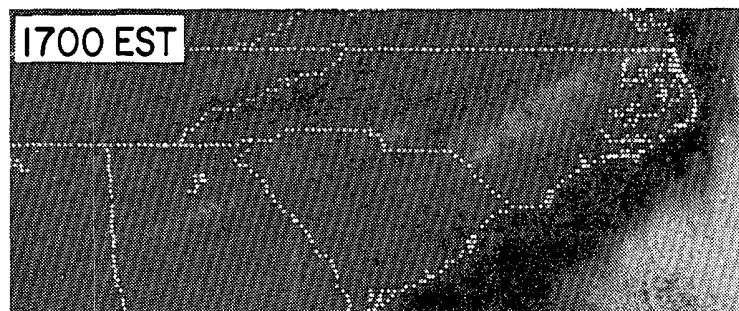
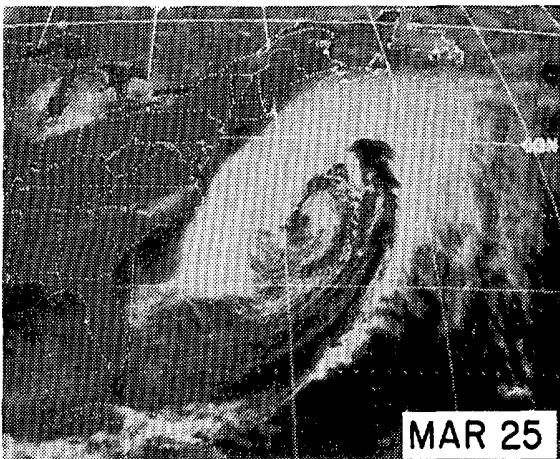
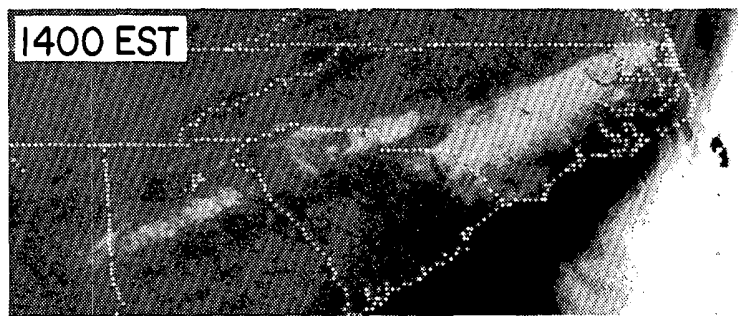
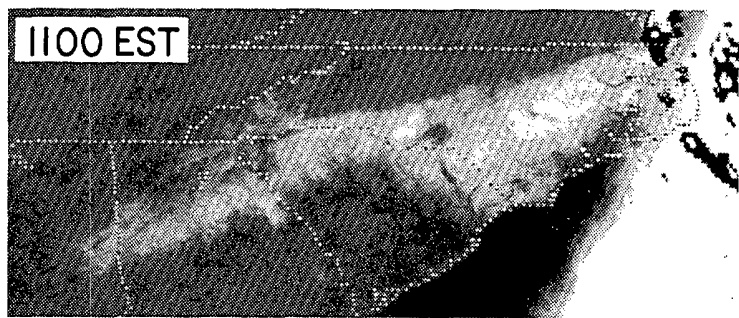
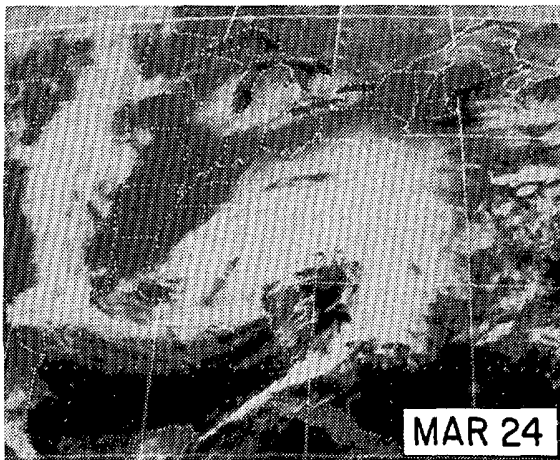
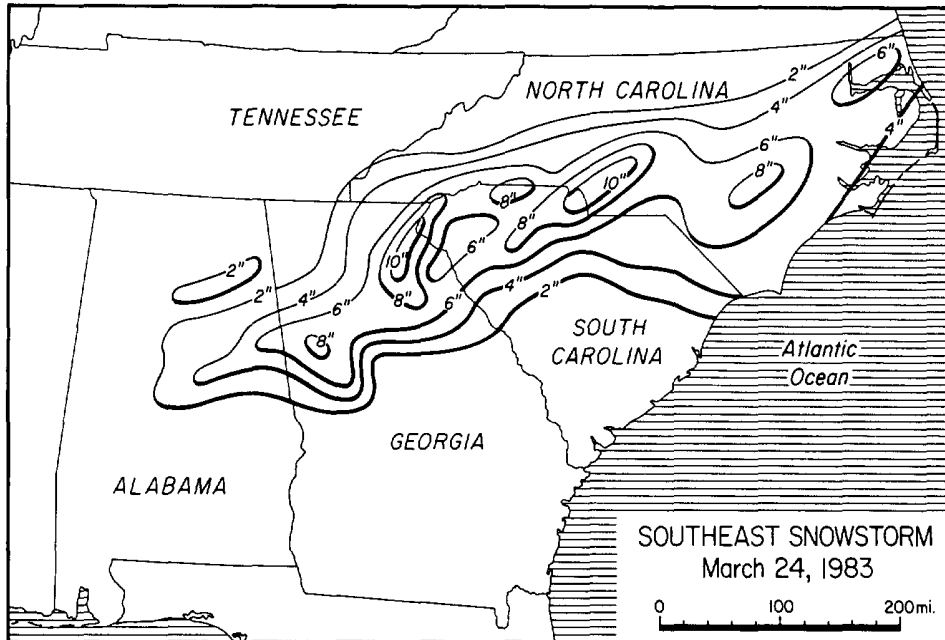


Machinery shed in which concrete foundation was pulled out of ground.

---Map and photos from NWSO Brownsville, Texas. All photos by Richard Hagan.

4. SNOWSTORM in the SOUTHEAST on March 24, 1983

An unusually late winter storm dumped record amounts of heavy, wet snow in a band across the southeastern states of Alabama, Georgia, South Carolina and North Carolina on March 24th. The snow, up to 10 inches in some areas, caused many tree limbs to break and fall on power lines resulting in widespread power outages. ---Snowfall data supplied by NWSFOs at Birmingham, Alabama and Atlanta, Georgia; the North Carolina Climate Program; and the South Carolina Water Resources Commission.



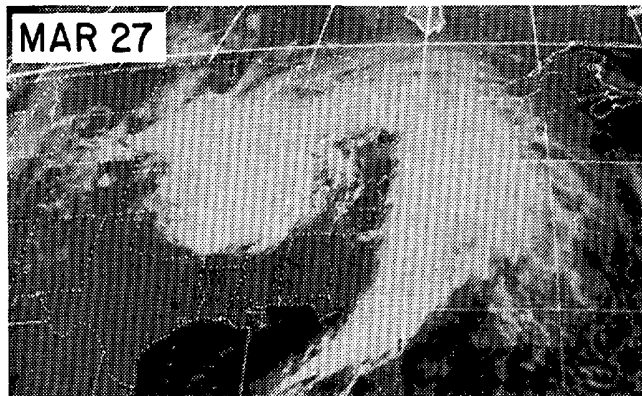
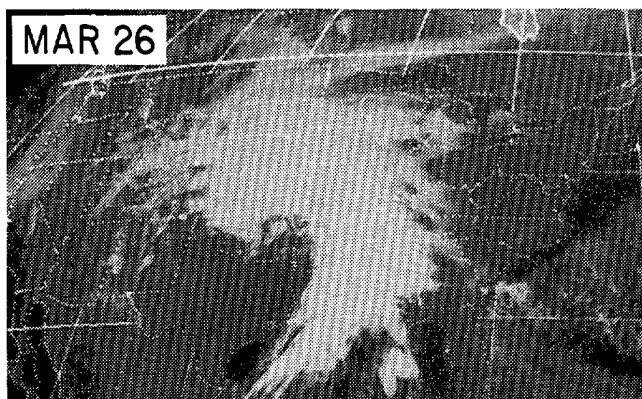
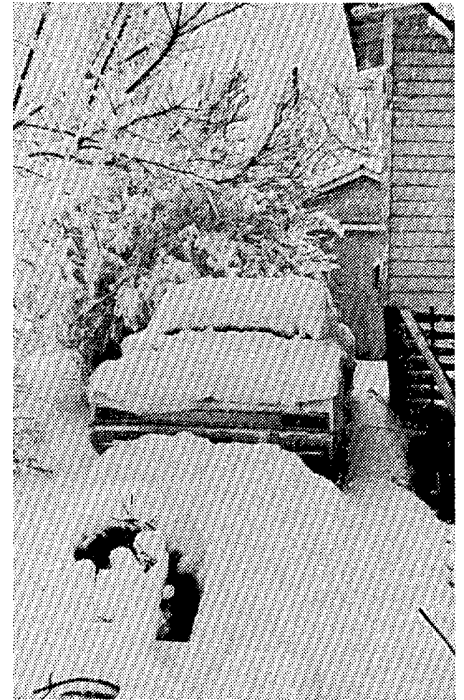
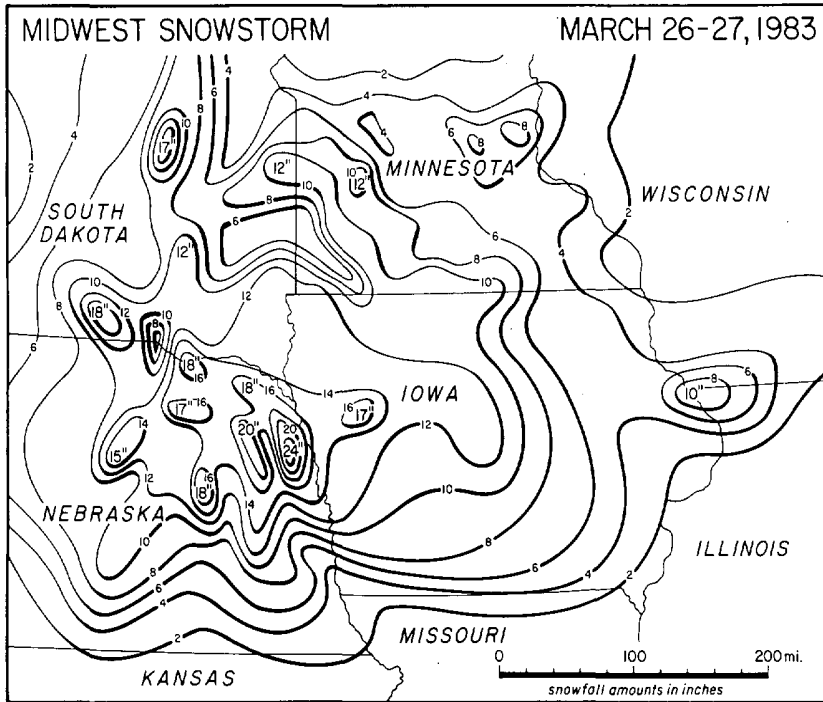
The large circulating cloud mass of the storm shown at 1300 EST (1800 GMT) for both days.

A 3-hour interval, satellite photo sequence shows the rapidly melting snow on March 25th.

---All satellite photos from NESDIS.

5. SNOWSTORM in the MIDWEST on March 26-27, 1983

Only a day after the snowstorm in the southeast, a second intense low-pressure system began dumping heavy, wet snow in the midwest. Up to 2 feet of snow fell in northeast Nebraska (see map below). Snowdepths were highly variable due to the fact that convective activity caused many of the locally heavy amounts. ---Snow data supplied by NWSFOs at Des Moines, IA; Minneapolis, MN; Omaha, NE; and Sioux Falls, SD.



The GOES East, visible images above show the swirling comma cloud of the storm at 1200 CST (1800 GMT) on March 26th, and 24 hours later on the 27th. ---Photos from NESDIS.

Snow pictures above were taken in an area of northeast Nebraska. ---Photos supplied by NWSFO Omaha, Nebraska.

STORM DATA AND UNUSUAL WEATHER PHENOMENA

MARCH 1983

PLACE	DATE	TIME - LOCAL STANDARD	LENGTH OF PATH (MILES)	WIDTH OF PATH (YARDS)	NO. OF PERSONS		ESTIMATED DAMAGE		CHARACTER OF STORM
					KILLED	INJURED	PROPERTY	CROPS	
1 ALABAMA									
State	05	Afternoon							Wind and Flooding
	An intense low pressure system produced strong southeasterly winds, thunderstorms and some locally heavy rains. The strong onshore winds, combined with high tides, to produce some coastal flooding of low areas. Heavy rains inland produced some flash flooding, mainly across central Alabama. The strong southeasterly winds, that gusted to around 50 mph at times, combined with thunderstorm outflow, resulted in scattered and mostly minor wind damage. Some specific reports follow:								
Mobile area, Mobile County	05	1140CST			0	0	?	0	Wind and Flooding
	Mobile police reported trees and power lines down on Sage Avenue with debris in the street. Water was 1 ft. deep on part of Dauphin Island Parkway. Winds gusted to 50 mph at the Mobile Airport at 1057CST.								
West Central and NW Alabama	05	Afternoon			0	0	6	0	Flash Flood
	Rainfall amounts of from 4.5 to 7.5 inches caused flash flooding in a narrow band through Greene, Pickens, Fayette, Walker, Winston and Lawrence Counties. Damage was mainly to roads and bridges, but some dwellings also sustained flood damage. The worst residential flooding was apparently along Lost Creek in the Carbon Hill area of Walker County.								
Lee and Chambers Counties	05	Afternoon			0	0	5	0	Flash Flood
	Water entered 7 or 8 hours along Town Creek in the Auburn area of Lee County. The flooding also damaged a bridge and its approaches. In Chambers County, two men were drowned while attempting to drive across a flooded creek that had covered the roadway on County Road 69.								
Birmingham area, Jefferson County	05	1555CST			0	0	?	0	Wind
	Trees and power lines were downed by high winds and a roof was blown off a car wash. Winds gusted to 50 mph at the National Weather Service at 1547CST.								
Madison County Airport	05	1700CST			0	0	?	0	Wind
	Wind gusted to 60 mph at the National Weather Service.								
Huntsville area, Madison County	05	1705CST			0	0	?	0	Wind
	Some windows broken and trees downed by high winds.								
Leighton area, Colbert County	05	1715CST			0	0	?	0	Wind
	A tree was blown down on a house and other downed trees were reported to be blocking roadways.								
Houston County	05	1725CST			0	0	?	0	Wind
	Wind damage to a wooden porch and power lines.								
Limestone County	05	1730CST			0	0	?	0	Wind
	U.S. 72E reported blocked by fallen trees.								
Birmingham area, Jefferson County	05	1745CST			0	0	?	0	Wind
	Several trees were blown down in western Birmingham, some of which fell on homes.								
Madison and Jackson Counties	05	1807CST			0	0	?	0	Wind
	Several trees reported downed by high winds.								
Scottsboro area, Jackson County	05	1830CST			0	0	?	0	Wind
	Strong winds caused power outages and damaged a mobile home.								
Etowah and Calhoun Counties	05	1935CST			0	0	?	0	Wind
	High winds downed some trees and power lines. A carport was damaged in the Gadsden area.								
Butler County	20	1310CST	.1	30	0	0	1	0	Tornado (F1)
	A small tornado touched down in a wooded area west of Georgiana in the Providence Community.								
Central Alabama	24	Early morning			0	0	0	0	Heavy snow
	A very late season storm dumped from 1 to 3 inches of wet snow over a large part of central Alabama and from 4 to 7 inches in a narrow band over Clay and Randolph Counties. Most of the snow had melted and traffic conditions were back to normal before noon.								
Central and north-east Alabama	26	Afternoon			0	0	4	0	Wind
	Strong winds buffeted the area. Winds gusted to 49 mph at the National Weather Service in Birmingham around 1500CST. Around 1607CST winds were gusting to 66 mph at a Birmingham TV station atop Red Mountain and peaked at near 70 mph around 1700CST. The winds were apparently strongest in a band from the Birmingham area to around Anniston. With the ground already saturated from previous rain and snow, trees were downed in several areas. There was also damage to power lines and some roofs. A large barn was unroofed in southern Jefferson County.								
Theodore, Mobile County	26	1650CST	**30	20	0	0	5	0	Tornado (F1)
	A tornado lifted the entire roof off a bank building and rains that followed caused extensive water damage to the interior and contents of the brick and concrete structure. Two people working in a nearby garage saw a dark funnel-shaped, rotating cloud approach the bank. The funnel disappeared after passing over the bank moving rapidly northeast.								
ALABAMA									
Baldwin County	26	1745CST			0	0	?	0	Wind
	Trees reported blown down in Spanish Fort Estates.								
Gulf Shores area, Baldwin County	26	1835CST			0	0	4	0	Wind
	Civil Defense reported winds of 50 to 60 mph. Some power lines were torn down by falling trees with lots of blowing debris, especially from around construction sites. Some roadway flooding was also reported.								
North and central Alabama	27	Afternoon			0	0	?	0	Wind
	Strong southwest winds associated with an intense low pressure system centered north of Alabama buffeted the area. Wind gusts to 46 mph were reported in Anniston. Wind gusts reached 53 mph at the Birmingham airport at 1340CST. There was scattered damage to trees and power lines.								
2 ARIZONA ————— NONE REPORTED									
3 ARKANSAS									
Sevier County	04	1200CST			0	0	3	-	Severe Thunderstorm
	Lightning and strong winds from a thunderstorm combined to down a tree across the roof of a De Queen residence. Lightning struck the base of the tree, weakening it, then winds blew it over.								
Little River County	04	1245CST			0	0	?	-	Wind
	Thunderstorm winds uprooted several trees near Critten Ridge.								
Miller County	04	1315CST			0	0	?	-	Wind
	Thunderstorm winds downed several trees 4 miles east of Boggy.								
Pike County	04	1330CST			0	0	?	-	Wind
	Thunderstorm gusts uprooted trees in Nathan.								
Hempstead County	04	1330CST			0	0	?	?	Wind
	Strong thunderstorm winds knocked down trees 3 miles southeast of Patmos.								
Drew County	04	1400CST			0	0	4	-	Wind
	Strong thunderstorm winds destroyed barn and another small building on farm at Valley Community (Southwest corner of Drew County).								
Nevada County	04	1415CST	16	50	0	0	5	-	Tornado (F1)
	A small tornado touched down 5 miles south of Bodcaw and travelled northeast. Path terminated about 2 1/2 miles north northwest of Cale. Most of 5 poultry houses were destroyed, killing 16,000 chickens. Several barns and out-buildings were destroyed or damaged. Several residences received roof damage, mainly from downed trees.								
Lafayette County	04	1425CST			0	0	?	-	Wind
	Strong winds from a thunderstorm knocked down several trees 3 miles south of Midway.								
Garland County	04	1430CST			0	0	4	-	Severe Thunderstorm, Flooding
	A severe thunderstorm caused localized flooding in Hot Springs. Besides heavy rain, strong winds produced by the storm knocked several trees and power lines.								
Columbia County	04	1445CST and 1505CST			0	0	?	-	Wind
	Tree and power line damage from thunderstorm winds was reported 5 miles west of Ware. About 20 minutes later, trees were blown down onto houses in Magnolia.								
Ouachita County	04	1600CST			0	0	-	-	Funnel Cloud
	A funnel cloud was sighted in the west side of Camden.								
Perry County	04	1600CST			0	0	4	-	Wind
	High winds from a thunderstorm knocked down a barn in Houston.								
Ouachita County	04	1700CST			0	0	?	-	Flooding
	Street flooding from heavy rains was reported in Camden.								
Pulaski County	04	1710CST			0	0	?	-	Lightning
	Lightning struck a substation insulator in Jacksonville, leaving about 10,000 customers without power for 45 minutes.								
Union County	04	1800CST			0	0	?	-	Flooding
	Heavy rains caused street flooding in El Dorado.								
Jefferson County	04	1835CST			0	0	?	-	Flooding
	Street flooding occurred in Pine Bluff shortly after dark as heavy rains fell across the city.								

STORM DATA AND UNUSUAL WEATHER PHENOMENA

MARCH 1983

PLACE	DATE	TIME - LOCAL STANDARD	LENGTH OF PATH (MILES)	WIDTH OF PATH (YARDS)	NO. OF PERSONS		ESTIMATED DAMAGE		CHARACTER OF STORM
					KILLED	INJURED	PROPERTY	CROPS	

— ARKANSAS									
Lee County	04	2230CST			0	0	2	-	Wind
Strong thunderstorm winds caused damages to business signs in Marianna.									
Cross County	04	2230CST			0	0	4	-	Wind
High thunderstorm winds partially blew roof off two buildings in Wynne plus other minor damage.									
Desha County	05	0330CST			0	0	4	-	Wind
Strong thunderstorm winds did considerable damage to the McGehee High School. Minor water damage occurred also.									
Hot Spring County	05	1747CST			0	0	-	-	Funnel Cloud
A funnel cloud was reported near Magnet Cove or 1 1/2 miles north of Malvern.									
Garland County	05	1750CST			0	0	3	-	Wind
Strong thunderstorm winds knocked down trees in the Lonsdale area in the extreme eastern end of the county.									
Saline and Pulaski Counties	05	1804CST			0	0	-	-	Funnel Cloud
A funnel cloud was sighted along U. S. Highway 70 at the Saline-Pulaski County line. This same funnel was confirmed 10 minutes later by an NWS meteorologist.									
Pulaski County	05	1805CST			0	0	-	-	Funnel Cloud
A funnel cloud was sighted over Shinnell Mountain in the western end of the county.									
Pulaski County	05	1812CST			0	0	-	-	Funnel Cloud
A funnel cloud was reported over southwest Little Rock.									
Saline County	05	1832CST			0	0	-	?	Hail
Golfball size hail was reported at Congo.									
Pulaski County	05	1835CST			0	0	-	-	Funnel Cloud
A funnel cloud was reported by a Sheriff's Deputy near I-430 and the Arkansas River in Little Rock.									
Perry County	05	1848CST			0	0	-	-	Funnel Cloud
A funnel cloud was spotted by a Deputy near Ludwig. Same cloud was sighted later just west of the city of Conway, but still in Perry County.									
Pulaski County	05	1859CST			0	0	?	?	Hail
One inch hail was reported by HMs 2 miles west of Gravel Ridge.									
Pulaski County	05	1901CST			0	0	?	?	Hail
In Little Rock, golfball size hail fell 4 miles west of I-430 along Lawson Road. One inch hail was reported in Gravel Ridge and McAlmont areas 5 minutes later. Reports of large hail with this thunderstorm kept coming in until 1945CST as the storm moved north northeast through the county.									
Pulaski County	05	1945CST			0	0	-	-	Funnel Cloud
A funnel cloud was sighted just northeast of the Little Rock Air Force Base.									
Pulaski	05	1955CST			0	0	3	-	Hail
1 3/4 inch hail fell at Little Rock Air Force Base (Jacksonville).									
Jackson County	05	2115CST			0	0	?	?	Hail
Hail ranging in size from 1/2 to 1 3/4 inches was reported in Newport.									
White County	05	2119CST			0	0	?	?	Hail
One inch hail fell in Searcy.									
Newton County	26	1445CST			0	0	4	-	Wind
Strong winds destroyed part of a residence in Piercetown.									
Logan County	26	1600CST			0	0	?	-	Wind
Strong thunderstorm winds did much damage across the northern section of Logan County from Caulksville to Carbon City to Scraton. Some roofs were damaged, several buildings were destroyed.									
Boone County	26	1645CST			0	0	?	-	Wind
Strong thunderstorm winds downed trees, power lines and blew over a metal building in Harrison.									
Sharp County	26	1700CST			0	0	4	-	Wind
Strong thunderstorm winds blew over some golf carts in Cherokee Village. Some power lines were knocked down.									
Sharp County	26	1700CST	1/4	10	0	0	-	-	Tornado (F#)
A small tornado touched down briefly on a hilltop in Williford.									

— ARKANSAS									
Marion County	26	1700CST	2	880	0	0	5	-	Tornado (F2)
A tornado moved through the Eros Community, damaging 6 homes, 6 small buildings, several hay barns, one camper, and a travel trailer.									
Sharp County	26	1710CST			0	0	-	-	Funnel Cloud
A funnel cloud was sighted just north of Hardy.									
Baxter County	26	1720CST			0	0	4	-	Severe Thunderstorm
This storm entered the county near Gasville and moved northeast through Mountain Home. Trees were uprooted, power lines were knocked down. Lightning struck the tower of a T. V. station in Mountain Home. In Gasville, one business lost one wall from strong winds; also, one mobile home was overturned.									
Stone County	26	1800CST			0	0	2	-	Wind
Thunderstorm winds damaged windows and business signs in Mountain View.									
Independence County	26	1820CST			0	0	4	-	Severe Thunderstorm
A strong thunderstorm moved through the Southside Community and Batesville. Golfball size hail was reported at Southside, Salado, Sulphur Rock, Cord, Charlotte, Gainsboro, and Cave City. Strong winds in the south sections of Batesville knocked down trees, power lines, and utility poles leaving 2800 homes without power.									
Izard County	26	1845CST			0	0	-	-	Funnel Cloud
A funnel cloud was sighted near Stella Community.									
Sharp County	26	1900CST	1/4	10	0	0	-	-	Tornado (F#)
A very weak tornado touched down just east of Hwy 167 in Highland as it moved northeast knocking down some trees.									

4 CALIFORNIA, Northern									
Shasta, Tehama, Glenn and Butte Counties	01	0600PST	-	-	1	5	6	5	Flood
02 2330PST									
The Sacramento River rose to near record levels after 24-36 hours of rain. There was some heavy rain during that time with amounts ranging from 6" - 11". Some feeder streams were flooded. Live Oak and Reeds Creeks overflowed their banks as did some areas of the Sacramento River. Nearly 80,000 acres and 100 buildings were flooded. Over 100 residents evacuated their homes.									
Alviso	01	1400PST	-	-	0	2	6	0	Flood
2400PST									
The levee along the rain-swollen Coyote Creek gave way and flooded Alviso, which is 7' below sea level. Three to six feet of water covered most of Alviso, causing the evacuation of 4700 residents.									
Stinson Beach (Marin County) Pacifica (San Mateo County) Santa Cruz County Palo Colorado Canyon (Monterey County)	01	1500PST	-	-	0	2	6	0	Wind
03 1700PST									
Wind caused waves from 15' to 20' to pound the coast for two days, washing away and undermining many buildings. Approximately 400 beachfront homes and businesses were damaged by the waves and beach erosion. Over 500 residents were evacuated.									
Clear Lake (Lake County)	01	1500PST	-	-	1	2	7	4	Flood
03 0800PST									
Clear Lake received 7.11" of rain, causing it to reach 4' over flood stage. Five hundred lakefront homes were damaged. Mud slides destroyed 9 homes. Over 250 families had to be evacuated. Water, electricity and gas were turned off for days.									
Kern County	01	1700PST	-	-	0	0	5	5	Flood
02 1700PST									
Caliente Creek, located near Bakersfield, flooded vineyards and portions of the east end of Lamont.									

STORM DATA AND UNUSUAL WEATHER PHENOMENA

MARCH 1983

PLACE	DATE	TIME - LOCAL STANDARD	LENGTH OF PATH (MILES)	WIDTH OF PATH (YARDS)	NO. OF PERSONS				ESTIMATED ¹ DAMAGE		CHARACTER OF STORM
					KILLED	INJURED	PROPERTY	CROPS	PROPERTY	CROPS	
CALIFORNIA, Northern											
Roseville (Placer County)	03	1715 PST	1/8	50	0	0	0	0	0	0	Tornado (F0)
A tornado touched down briefly in Roseville. No damage or injuries were reported.											
Bedding and Anderson (Shasta County)	10 11	2300 PST 0120 PST	-	-	0	0	0	0	0	0	Hail
There was a thunderstorm with heavy rain and 1/4" to 1/2" hail. There was some local street flooding. No reports of damage.											
Citrus Heights (Sacramento County) Roseville (Placer County)	22	1410 PST 1430 PST	1 1/2	50	-	-	5	0	0	0	Tornado (F1)
The tornado touched down briefly at three sites. The first was at Stonegate Mobile Park in Citrus Heights; then about 100 yards northeast; then nearly a mile away at Riverside Blvd. in Roseville. Witnesses felt rapid pressure drop and watched objects carried into the air. The Furrow Store sustained the most damage. No injuries were reported.											
4 CALIFORNIA, Southern											
Los Angeles, Los Angeles County	1	0740 PST	3.5	100	0	30	5-7	0	0	0	Tornado (F2)
A tornado moving SSW to NNE touched down at 0740 PST and disappeared into the clouds after passing near the Convention Center at 0801 PST. Most damage occurred in an area known as South Central Los Angeles. Approximately 50 homes and 7 businesses were damaged.											
San Marino, Los Angeles County	1	0815 PST	short narrow	0	1	?	0	0	0	0	Tornado (F0)
A tornado moving south to north touched down briefly in San Marino, about 9 miles northeast of the Los Angeles Civic Center. Only minor damage resulted. A driver of a Cadillac Fleetwood was seriously injured when the car was hurled about 15 feet into the air and carried across a main highway. The tornado was seen by at least two individuals.											
Santa Ana, Orange County	1	1143 PST			0	0	?	0	0	0	High Wind
A mobile home park in Santa Ana was hit by high winds which overturned one mobile home and damaged 20 others. No tornado was sighted.											
Malibu, Los Angeles County	3	1315 PST									Waterspout
A waterspout was sighted just off the coast at Mill Rogers State Beach and reported to the County Sheriff's Office. No other details reported.											
Oceanside, San Diego County	21	0330 PST									Windstorm
Strong, gusty winds downed power lines and some trees. Police reported no structural damage and no injuries. No tornado, just straight-line winds.											
5 COLORADO											
Mountains, Northeast	4-6				0	0	6	0	0	0	Heavy snow, rain
A slow moving, moisture laden storm produced heavy snow and rain over much of Colorado. The central mountains and eastern foothills were the areas with the most precipitation, with two to three feet of snow falling at Copper Mountain, Arapahoe Basin, Honderu, Woodland Park, and Nederland. The Palmer Ridge and the southern part of the Denver metropolitan area were also buried; 26 inches of snow fell in southeast Aurora, with 25 inches at Franktown and 19 inches at Littleton. 18.7 inches fell at Denver's Stapleton Airport, but snowfall tapered off rapidly to the north. Brighton received 11 inches, with 8 at Greeley; but Fort Collins and Boulder were drenched by rain, and had no snow at all. The moisture content from the storm was very heavy, with 3.06 inches at Stapleton and 2 to 4 inches at many other spots in the mountains and northeast. The heavy, wet snow snapped many tree limbs. These fell on power and phone lines, causing many outages. Numerous highways were closed, and 1500 motorists were stranded in Limon. 2000 travelers were stuck at Stapleton Airport; for a time, only one of the four runways was open, and many flights were canceled. One home in Denver was severely damaged when its roof collapsed under the weight of the snow.											
COLORADO											
Statewide	14-16				0	0	5	0	0	0	Heavy snow
Another heavy snowstorm buried Colorado, depositing snow over most of the state. The heaviest amounts fell in the eastern foothills; 30 inches buried Cripple Creek, with 34 inches at Conifer, 39 inches at Buckhorn Mountain, west of Fort Collins; and about four feet of snow fell in Coal Creek Canyon, northwest of Denver. The storm left 6 to 10 inches of snow in the Denver and Fort Collins areas. Boulder, which was missed by the previous storm, made up for it this time with 12 to 18 inches. Many ski areas were buried under similar amounts of powder. The storm extended eastward onto the prairies, with 7 inches of snow at Limon and 4 inches at Rocky Ford. The storm forced closure of the Colorado Springs airport for a time on the 15th, and once again limited operations to one runway at Stapleton Airport in Denver. Some roads and schools were closed in eastern Colorado, and power outages occurred when wet snow downed lines.											
Mountains, northeast	18-19				0	0	0	0	0	0	Snow
Another snowstorm hit the state, depositing up to 18 inches of snow in the southern mountains. Amounts in northeastern Colorado were lighter, with 2 to 6 inches in most areas, though 7 to 10 inches fell around Fort Collins. Cold temperatures made roads extremely slick, causing many traffic accidents.											
Eastern Colorado	26	all day			0	0	0	0	0	0	High winds
Very strong winds caused ground blizzards and road closures in many spots around eastern Colorado. Winds gusted up to 61 mph in La Junta at 8:48 AM, and many other spots on the plains had peak gusts in the 40 to 60 mph range. The winds whipped snow into drifts up to 7 feet high at Black Forest, just north of Colorado Springs.											
Northeast Foothills	30	afternoon			0	0	4	0	0	0	High winds
Winds gusted to 82 mph at 2:30 PM at the National Center for Atmospheric Research near Boulder, with peak gusts of 70 to 80 mph northward to Fort Collins and the nearby foothills. Minor damage occurred at a construction site and to some homes in Boulder.											
Boulder	31	afternoon			0	0	3	0	0	0	High winds
Winds again caused minor damage in Boulder, with gusts up to 70 mph.											
6 CONNECTICUT											
Northern and north-west portion	8-9 10	All Day			0	0	5	0	0	0	Ice Storm
Moderate to heavy freezing rain caused heavy glaze to buildup on trees and power lines during the two to three day period. Many tree limbs and power lines were downed with power outages as the ice or glaze was up to 1 inch thick. Among the towns most effected were Barkhamsted, Hartland, Colebrook, Winchester, and Winsted. A Northwest Cablevision transmitting tower fell under the weight of the ice in Winchester Center and damage was estimated at about \$100,000.											
Statewide	19- 21	All Day			0	0	5	0	0	0	Heavy Rain and Flooding
Heavy rain amounting up to 4 inches in some areas on Saturday was followed by three major rivers, the Connecticut, the Farmington, and the Housatonic reaching flood stage and slightly above on Sunday and Monday. Flooding occurred in low-lying areas. A railroad bridge over the Housatonic River in Derby was knocked out as a 10 foot section collapsed. Roads in low lying areas were flooded and a few were closed due to washouts.											
7 DELAWARE ————— NONE REPORTED											

STORM DATA AND UNUSUAL WEATHER PHENOMENA

MARCH 1983

PLACE	DATE	TIME - LOCAL STANDARD	LENGTH OF PATH (MILES)	WIDTH OF PATH (YARDS)	NO. OF PERSONS				ESTIMATED DAMAGE	CHARACTER OF STORM	PLACE	DATE	TIME - LOCAL STANDARD	LENGTH OF PATH (MILES)	WIDTH OF PATH (YARDS)	NO. OF PERSONS				ESTIMATED DAMAGE	CHARACTER OF STORM
					KILLED	INJURED	PROPERTY	CROPS								KILLED	INJURED	PROPERTY	CROPS		
8 FLORIDA											— FLORIDA										
Pea Ridge, Santa Rosa County	05	1850EST	.5	30	0	0	1	-	Tornado (F0)	Miami area, Dade County	17	0900EST-0915EST	-	-	0	1	1	-	Hailstorm		
<p>A small tornado hit the Pea Ridge community just east of Milton with only minor tree and sign damage reported. The tornado dissipated after only a short path.</p>										<p>A severe thunderstorm carrying hail moved northeast through the immediate Miami area. Hail from pea size to larger than marble size was reported from 4.5 miles southwest of Miami to 6 miles east northeast of Miami to Miami Beach. One person in Miami Beach was treated at a local hospital for hail-related cuts and bruises but the injuries were not serious. The thunderstorm moved out of Miami Beach and into the Atlantic.</p>											
Destin, Okaloosa County	05	2015EST	.5	30	0	0	2	-	Tornado (F0)	Okeechobee, Okeechobee County	21	0530EST	5	30	0	4	6	-	Tornado (F2)		
<p>A small tornado damaged several automobiles at the Holiday Isle Surf and Racquet Club east of Destin. The funnel went back up into the clouds.</p>										<p>Tornado destroyed 14 trailers in 5 trailer parks in the vicinity of the city of Okeechobee along the north shore of Lake Okeechobee. Three serious injuries resulted when trailers were either overturned or collapsed on top of occupants. Marble size hailstones were also reported along the north shore of the lake about 0545EST. The thunderstorm moved northeast and weakened.</p>											
Tallahassee, Leon County	06	0030EST-0230EST	-	-	0	0	4	-	Flooding	Citrus, Hardee, Hernando, Pasco, Hillsborough, Pinellas Counties	24	0430EST	-	-	0	0	5	-	Windstorm and Hailstorm		
<p>Heavy thunderstorms dropped four to five inches of rain in about 2 hours at the Liberty Park subdivision in south Tallahassee. Water three to four feet deep forced the evacuation of six homes, and a few elderly people had to be rescued by law enforcement personnel. Damage was mostly to carpet and furniture. Wind damage was also reported as trees smashed into a few houses around 0030EST.</p>										<p>A strong squall line moved into the West Central Florida coastal counties dropping hailstones ranging from pea size to one inch in diameter. Hail damaged about 200 cars at an automobile dealer's lot, and strong gusty westerly winds of up to 65 mph blew most of the day. Most of the wind damage was to trees and power lines with isolated broken windows and displaced roof shingles. A few mobile homes were also overturned.</p>											
Bay and Gulf Counties	06	2035EST	-	-	0	0	1	-	Hailstorm	Winter Haven, Polk County	24	0515EST	.8	80	0	2	5	-	Tornado (F1)		
<p>A severe thunderstorm moving northeast through eastern Bay and western Gulf counties dropped one inch diameter hail on the ground over a large area. Very strong winds also accompanied the storm through the mostly rural area.</p>										<p>Tornado overturned several trailers at Winter Haven. Severe thunderstorm winds caused damage through most of the county. Wind damage was mostly to trees, power lines, and roofs. Two minor injuries were reported at the trailer park in Winter Haven.</p>											
Tallahassee, Leon Co. and Wakulla County	06	2330EST	-	-	0	0	2	-	Hailstorm	Siesta Key and Longboat Key, Manatee and Sarasota Counties	24	0545EST	-	-	0	0	5	-	Thunderstorm Winds		
<p>Part of the same thunderstorm complex dropped hail in Bay and Gulf counties earlier. Marble to golfball size hail was reported. Some tree and roof damage was also reported due to strong winds.</p>										<p>Several homes suffered window and roof damage from strong winds along the coastal islands of the West coast. Trees were uprooted, power lines and traffic signals blown down. These thunderstorms were along the same squall line which moved through the Tampa-St. Petersburg area earlier.</p>											
Melbourne, Satellite Beach, Brevard County	07	1545EST	5	60	0	0	5	-	Tornado (F2)	Osceola and Brevard Counties	24	0610EST	16	90	0	0	7	-	Tornado (F2)		
<p>Tornado skipped through south Brevard County dipping to the ground several times along its five mile path in the Melbourne and Satellite Beach areas. A trailer was demolished and an office building at a recreational vehicle sales office was substantially damaged. Trees were uprooted, power lines blown down, boats and roofs were damaged, and the controls at a drawbridge destroyed. The tornado moved northeast away from the beach and dissipated over the Atlantic.</p>										<p>A tornado spawned by a strong thunderstorm along a squall line moving through Central Florida first struck in northeast Osceola County then moved northeast through central Brevard County. Most of the damage was in the Cocoa Beach-Merritt Island area near Cape Canaveral. Trees were uprooted, roofs were blown off numerous homes, commercial and warehouse buildings were severely damaged, and small boats were scattered about the beach area near the marina.</p>											
Naples, Golden Gate, Collier County	17	0715EST	7	40	0	0	5	-	Tornado (F1)	Osceola and Brevard Counties	24	0650EST	15	80	0	0	5	-	Tornado (F1)		
<p>Tornado flipped a small airplane on its back at the Naples airport. It moved east northeast blowing the roof off a convenience store building. A large aluminum awning was blown about 600 feet down the road breaking power poles and snapping power lines. Numerous trees were uprooted. The tornado apparently dissipated over the swamps.</p>										<p>A second tornado traveled along a path about 15 miles south of the first damaging mainly the Kenansville area in eastern Osceola County and the Melbourne area in southern Brevard County. Several trailers were overturned near Kenansville, and 17 light planes were damaged or destroyed at the Melbourne Regional Airport.</p>											
Collier, Dade, and Broward Counties	17	0749EST	35	60	0	2	6	-	Tornado (F2)	Broward and Dade Counties	24	1020EST-1110EST	-	-	0	0	4	-	Thunderstorm Winds		
<p>The tornado first struck the ground along U.S. 41 about 20 miles east of Ochoppe overturning two cars with two minor injuries resulting. Two houses suffered minor damage, a gas station roof was substantially damaged and power lines were blown down. The tornado continued northeast through northwest Dade County into western Broward County. It passed through a number of incorporated areas in eastern Broward County skipping along a 16 mile path in that area. Sunrise--11NW FLL--extensive damage to several homes and a recreation center. <i>Lauderhill</i>--10NW FLL--a porch was blown off a house. North Lauderdale--11NW FLL--a tree was blown into a house and there was also minor roof damage. Margate--11NW FLL--tree was blown into house and power lines downed. Pompano Beach--12N FLL--truck overturned at Florida Turnpike Plaza and a tree was blown onto a car trapping its occupants. A mobile home was overturned 14N FLL and a truck was overturned 15N FLL. Windows were blown out at a shopping center. Second floor of a two-story building was destroyed. Lighthouse Point--16NW FLL--a farm store building was damaged. Numerous trees were uprooted and power lines blown down along the entire length of path. Several cars were damaged mostly by flying debris.</p>										<p>A line of strong thunderstorms oriented north northeast to south southwest moved into the Southeast Florida coastal counties spawning strong wind gusts, small hail and brief heavy rains. Most of the damage was to trees and power lines but a few homes and automobiles suffered minor damage. A wind gust to 67 mph was recorded at the National Hurricane Center in suburban Miami just before 1100EST. The line moved east into the Atlantic.</p>											

STORM DATA AND UNUSUAL WEATHER PHENOMENA

MARCH 1983

PLACE	DATE	TIME - LOCAL STANDARD	LENGTH OF PATH (MILES)	WIDTH OF PATH (YARDS)	NO. OF PERSONS		ESTIMATED DAMAGE		CHARACTER OF STORM
					KILLED	INJURED	PROPERTY	CROPS	
9 GEORGIA									
Taylor County	05	2235EST			0	0	2	0	Wind
			Thunderstorm winds downed a few trees, mainly in the northern part of the county.						
Baldwin and Bibb Counties	06	0000EST-0300EST			0	0	5	0	Flooding
			Over 3 inches of rain fell in central Georgia during a 12-hour period ending early on the 6th. Nine homes and several cars were damaged in Milledgeville when Tandy Branch overflowed its banks. A few homes and cars in Macon suffered minor damage from flooding and a section of Forrest Hills Road was washed out.						
Fulton County	06	0115EST-0400EST			0	0	0	0	Flash Flood
			Heavy rains caused Peachtree Creek to go above flood stage at Northside Drive at about 0115EST. It crested more than a foot above flood stage. No significant damage was reported.						
Cobb and Fulton Counties	07	1820EST-1900EST			0	0	0	0	Hail
			Thunderstorms dropped hail up to 3/4 inches in diameter 5 miles west of the Fulton County Airport at 1820EST and in north Atlanta at 1900EST.						
Lee County	08-09	Afternoon through morning			0	0	4	0	Flooding
			Heavy rains caused the Kinchafoonee Creek at Leesburg to gradually rise to a crest of more than 8 feet above flood stage. Several homes were damaged by the flood waters.						
Pierce County	17	1445EST			0	0	3	0	Wind
			Thunderstorm winds ripped the tin roof from a small tractor barn in Offerman. The winds also damaged a mobile home nearby.						
North Georgia	24	Early morning through early evening			0	0	?	0	Snow
			An unusual late March snowstorm dropped more than 6 inches of snow over much of the northern third of the state. Many records were set for a storm so late in the season. Atlanta recorded 7.9 inches while Athens measured 8.7 inches; the largest amount was 11 inches at Cornelia. Many tree limbs weighted down by snow broke and fell on power lines, causing power outages for more than 50,000 customers. The roofs of a few homes were damaged by the weight of the snow accumulating on them. A few homes were damaged by falling limbs.						
10 IDAHO									
Boise Airport Ada County	11	1544-1549MST							Funnel
			Cold unstable air aloft was located over south-western Idaho. A funnel cloud was sighted just west of the Boise Airport by Weather Service personnel. The funnel never came close to the ground and quickly lifted up into the parent cloud.						
Jerome, Twin Falls, Cassia, Minidoka Counties	13	1600-1700MST					5	0	High Winds
			A strong cold front tore through the Magic Valley during the late afternoon hours. Burley reported a wind gust of 46MPH with some hail. The storm delivered its most powerful punch near Eden, Jerome County, where 41 electrical transmission line poles toppled like dominos. Damage costs were estimated at \$100,000.						
11 ILLINOIS									
Northeast Section	06	1300-2000CST			0	0	5	0	Hail & Wind
			Powerful winds accompanied by thunderstorms and hail caused damage in scattered areas in the north-east section of the state. At 1445.75 of a inch hail fell on Pontiac, Livingston County, for a period of 10 minutes causing no damage. At 1722 1 inch hail was reported in the Hometown area of Chicago, Cook County. High winds blew down 4 power lines 5 miles west of Elburn, Kane County, at 1540 a machine shed was destroyed west of Princeton, Bureau County, around 1730 and the roof of a nearby grain dryer was blown off. The wind carried an airplane hanger 150 yards and dropped it on a house near Princeton. In Prophetstown, Whiteside County, a bubble top of a nursery was blown off.						
Homewood, Hazel Crest, Cook County	06	1815CST	0.5	55	0	0	5	0	Tornado (F0)
			A weak tornado hit a small portion of Homewood and traveled into Hazel Crest. It first touched down 0.3 miles south of the intersection of 183rd street and Kedzie Ave. where a storage shed received minor roof damage. The tornado continued north where it hit an automobile dealership, at 183rd street and Kedzie Ave. A 150 foot by 150 section of the automobile garage roof was extensively damaged. Debris from the roof smashed windows and damaged the bodies of 9 cars. Numerous other cars received minor damage. Debris and insulation from the garage landed as far as .25 miles away. As the tornado continued traveling north to Hazel Crest it weakened but caused minor roof damage to an apartment complex.						
12 INDIANA									
Mulberry, Clinton County	06	1511EST			0	0	0	0	Hail
			Golf ball size hail reported.						
Plymouth, Marshall County	06	1610EST			0	0	0	0	Hail
			Hail 1/2 to 3/4 inch reported.						
Fairbanks, NW Sullivan County	06	1830EST			0	0	3	0	Thunderstorm Winds
			Barn roof blown off by strong winds.						
Cedarville, Allen County	06	1900EST			0	0	0	0	Hail
			3/4 inch hail reported just east of Cedarville.						
6mi S Auburn, DeKalb County	06	1908EST			0	0	0	0	Hail
			3/4 inch hail reported.						
Cortland, 2W Seymour Jackson County	06	2030EST			0	0	3	0	Thunderstorm Winds
			Windows blown out of a grocery store causing the drop ceiling to collapse.						
2 N Columbus, Bartholomew County	06	2100EST			0	0	3	0	Thunderstorm Winds
			Shed blown down and several trees uprooted, pick-up truck damaged.						
Nappanee, Elkhart County	07	1430EST			0	2	0	0	Lightning
			Two girls injured by Lightning while playing.						
S. Columbia City, Whitley County	07	1510EST			0	0	0	0	Hail
			3/4 inch hail reported						
Ligonier, Noble County	07	1845EST			0	0	0	0	Thunderstorm Winds
			Trees were blown over just west of town.						
LaPorte, Starke, St Joseph, Marshall Elkhart Counties	21-22				0	0	3	0	Heavy Snow
			Heavy snowfall of 5 to 9 inches caused numerous minor traffic accidents.						
IN. Fortville, Madison County	27	1235EST			0	0	0	0	Hail
			3/4 inch hail reported.						
Elwood, Madison County	27	1254EST			0	0	0	0	Hail
			3/4 inch hail reported.						
NW.Wabash, Wabash County	27	1330EST			0	0	0	0	Hail
			1 inch hail reported.						
Richmond, Wayne County	27	1403EST			0	0	0	0	Hail
			1/2 to 3/4 inch hail reported.						
Richmond, Wayne County	27	1407EST			0	0	0	0	Hail
			Hail 1 to 1 1/2 inch reported.						

STORM DATA AND UNUSUAL WEATHER PHENOMENA

MARCH 1983

PLACE	DATE	TIME - LOCAL STANDARD	LENGTH OF PATH (MILES)	WIDTH OF PATH (YARDS)	NO. OF PERSONS		ESTIMATED DAMAGE		CHARACTER OF STORM
					KILLED	INJURED	PROPERTY	CROPS	
13 IOWA									
Statewide	25-27	Evening-Morning			0	0	5	0	Winter Storm
<p>Heavy wet snow began to fall Friday evening as a winter storm entered Iowa. The snow continued on Saturday and combined with strong winds, severely reduced visibilities and produced terrible driving conditions. The snow continued into Saturday night and tapered off early Sunday morning. Southeast Iowa was spared the brunt of the storm as the snow turned back to rain on Saturday. The remainder of the state was not so fortunate, as heavy snow accumulated 8 to 16 inches over the Northern and Western Sections of Iowa. The main damage of the storm was to trees and power lines. The wet accumulation downed many branches and tree limbs as well as power lines, damaging houses and resulting in electrical power loss to tens of thousands of homes and businesses. Most power outages lasted only a few hours, but some homes in rural areas were without electricity up to 2 days. KHD TV in Des Moines was off for two hours due to transmitter trouble and several radio stations were off the air due to the storm. Three buildings, one in Creston, one in Collins, and one in Lake View collapsed due to the weight of the snow on the roof.</p>									
14 KANSAS									
Wichita, Sedgwick County	05	1625CST			0	0	3	0	Wind
<p>A barn under construction just south of McConnell Air Force Base was damaged by thunderstorm winds.</p>									
Prairie View, Phillips County	14	1830CST	0.5	100	0	0	5	0	Tornado (F1) and Hail
<p>A small tornado damaged about 45 homes and other buildings in Prairie View. Trees and power lines were also downed. Golf ball size hail preceded the tornado.</p>									
Frontenac, Crawford County	26	1515CST	7	100	0	4	6	0	Tornado (F3)
<p>A tornado touched ground on the southeast side of Frontenac and moved north northeast and lifted shortly before it reached Mulberry. Two people were injured in Frontenac when the tornado hit a mobile home park. Thirty mobile homes were destroyed and another 22 had damage. A farm home about a mile northeast of Frontenac was lifted from its foundation and destroyed. The two people in the home were injured. One had a broken pelvis and the other just scrapes and bumps. Several other rural homes and outbuildings were also damaged.</p>									
Wheeler, Cheyenne County	31	1655CST			0	0	0	0	Hail
<p>A few hail stones the size of golf balls fell near Wheeler.</p>									
15 KENTUCKY									
Hopkins and Webster Counties	05	2045-2130EST			0	0	3	0	Thunderstorm Winds
<p>Wind gusts to 60 miles per hour were reported throughout Hopkins and Webster Counties. A chimney was blown off a house in Providence. Several trees were downed. A few power outages were reported.</p>									
Trigg County	05	2145EST			0	0	2	0	Thunderstorm Winds
<p>Strong thunderstorm winds knocked down power lines in the "Land Between The Lakes" area causing extensive power outages.</p>									
Caldwell County	05	2150EST			0	0	1	0	High winds
<p>60 mile per hour winds were reported in Caldwell County.</p>									
Marshall County	06	1910CST			0	0	4	0	Thunderstorm Winds
<p>Strong thunderstorm winds destroyed a car wash in Calvert City.</p>									
Casey County	27	AFTN			0	0	2	0	Thunderstorm Winds
<p>Strong thunderstorm winds knocked power poles down and twisted off large trees in Middleburg. Numerous power outages occurred.</p>									
16 LOUISIANA ————— NO REPORT RECEIVED									
17 MAINE									
Aroostook County	02-	Late Evening EST			0	0	4	0	Wind and Snow
<p>An intense ocean storm that passed just to the south of Nova Scotia brought strong winds and rain to most of the state. The rain turned to wet, heavy snow over Aroostook County with accumulations from only 2 to 3 inches in the Houlton area, around 4 inches in the St. John Valley, upwards to 8.5 inches in Caribou. Travel was extremely poor due to slippery underfooting and considerable blowing and drifting of snow. Schools were closed Thursday in northeast Aroostook County. Minor power outages were reported statewide as the winds tore down tree limbs onto and through utility lines. A 368 foot barge was blown onto a beach at House Island with no apparent damage. Peak gusts Thursday were 52 mph at Augusta, 48 mph at Portland and 38 mph at Caribou and Houlton.</p>									
Winn Mountain, Sebago Cumberland County	11	0900 EST			0	0	6	0	Ice Buildup
<p>Deicing equipment was unable to handle several days of ice buildup on a 1,300 foot television tower. The 16 year old WCSH-TV tower crashed to the ground under the added weight of the ice. Pieces of the fallen tower damaged sections of the transmitter building. WCSH-TV remained off the air for the weekend. WGAN-TV had transmission problems as a result of ice falling off their tower and through the roof of their transmitter building early Friday morning. The ice apparently affected a receive-transmit antenna.</p>									
18 KENTUCKY									
Perry County	27	1550-1555EST	2	100	0	0	3	0	Tornado (F1) Hail
<p>Golfball size hail fell moments before a small tornado briefly touched down in the sparsely populated area near Viper. Viper is located 10 miles south of Hazard. A front porch was ripped off one house and blown into a creek 50 feet northeast of the house. A doghouse with a rather large dog chained to it was lifted up and deposited into the creek also. Neither the dog or the doghouse were injured. A grove of large pine trees, some 12 to 14 inches in diameter, across the road about 100 feet from the damaged house, were ripped from the ground and blown in the opposite direction... southwest from the damaged porch. A neighbors house, to the southwest, approximately 100 yards, had a roof pulled off but no other damage. Power lines were downed. A 60 foot high steel television tower on a mountain peak 1/2 mile northeast of the damaged residence was twisted like a pretzel. Residents within the area reported an extremely loud roar, comparing it to many jet engines, right before the storm struck.</p>									
Pulaski County	27	MID-AFTN			0	0	2	0	Thunderstorm Wind
<p>A new chain link fence was blown over and twisted out of shape at a residence in Shafter.</p>									
Lincoln County	27	MID-AFTN			0	0	2	0	Thunderstorm Winds
<p>Thunderstorm winds knocked the porch off a mobile home in Highland.</p>									
Clark County	27	1600EST			0	0	3	0	Thunderstorm Winds
<p>Strong thunderstorm winds blew a roof off of a church on Iron Works Road and several electrical wires were lying on the ground. A transmission line was damaged on Lexington Road cutting off electricity to 2,000 customers. Falling tree limbs downed power lines causing power outages in Poynterville. Strong winds blew out the front windows of a business in Winchester.</p>									

STORM DATA AND UNUSUAL WEATHER PHENOMENA

MARCH 1983

PLACE	DATE	TIME - LOCAL STANDARD	LENGTH OF PATH (MILES)	WIDTH OF PATH (YARDS)	NO. OF PERSONS		ESTIMATED ¹ DAMAGE		CHARACTER OF STORM
					KILLED	INJURED	PROPERTY	CROPS	

PLACE	DATE	TIME - LOCAL STANDARD	LENGTH OF PATH (MILES)	WIDTH OF PATH (YARDS)	NO. OF PERSONS		ESTIMATED ¹ DAMAGE		CHARACTER OF STORM
					KILLED	INJURED	PROPERTY	CROPS	

MAINE

York, Cumberland, Androscoggin, Kennebec and Sagadahoc Counties	18-20	Evening			1	0	6	0	Heavy Rain
<p>Anywhere from 1.75 to just over 3.50 inches of rain fell over southwest Maine in about 24 hours beginning Friday night. The rain caused the worst flooding in 20 years in the Sanford area. Most small rivers and streams overflowed their banks. Numerous cellars were flooded. Major damage occurred to many gravel and tarred roads and to several small bridges through the affected counties. Gray appeared to be hardest hit with 4 roads completely washed out and one bridge severely damaged. A presumed drowning occurred Saturday night as a 26 year old Benton woman and her car were apparently swept into the swollen Sebasticook River on Route 139. In East Sebago, 5 families at the mouth of the Northwest River were evacuated when high water threatened to collapse a concrete, cut-stone and earthen dam. A Springvale family was also evacuated as water reached fusebox level in their cellar.</p>									
South Portland, Cumberland County, Clinton, Kennebec County	21	Evening			0	0	5	0	Lightning
<p>Lightning caused damage to a South Portland home when it struck a tall pine tree nearby. The bolt then traveled through the rear foundation, blowing six windows into the house, sending dishes smashing to the kitchen floor, shattering glass in a lamp, tearing panels off a wall and destroying a television set and video recorder. The bolt also damaged the swimming pool liner. Another lightning bolt did extensive damage to the steeple and roof of the Clinton Baptist Church as well as breaking two water mains in the church basement.</p>									

18 MARYLAND and D.C.

Garrett County	8	0500EST			0	0	4	0	Lightning
<p>Several thousand dollars damage was incurred when a one-story frame house in the Friendsville area was struck by lightning. The bolt apparently hit the electrical system, setting fire to the attic.</p>									
Glen Burnie	8	2015EST			0	0	4	0	Lightning
<p>A shed, used in an upholstery business, was set afire and completely destroyed. Damage was estimated at around \$14,000.</p>									
Montgomery County	12	All Day			0	0	3	0	Wind
<p>Low pressure that moved up the East Coast brought with it winds gusting up to 45 miles per hour. Power lines were affected, causing outages to over 5,000 homes in the southern portion of the County.</p>									
Queen Annes and Harford Counties	18-21				0	0	0	0	Rain
<p>Streams overflowed their banks over several sections, swelled by rainfall from two low pressure systems that moved out of the southeastern states.</p> <p>NOTE....Record or near record rainfall occurred over Maryland during the month of March. An unprecedented 9.76 inches of rain was measured at the National Weather Service Baltimore City Office. This exceeded the previous record of 9.36 inches recorded at Bachman's Valley in 1903.</p>									

19 MASSACHUSETTS

Central and Western	8,9-10	All Day			0	0	5	0	Ice Storm
<p>Moderate to heavy freezing rain caused a heavy buildup of glaze during the two to three day period. More than 5,000 homes lost electric power for at least part of the period from midnight late Tuesday to midnight Thursday. Power lines and tree limbs were downed by the heavy ice which accumulated up to 2 inches thick in the hilltowns above 1,000 feet MSL. The towns of Becket, Blandford, Worthington, Chester, Savoy, Colrain, Cummington, and Russell were among those sustaining the most damage. A portion of a 247 foot TV and radio tower crashed to the ground on Mt. Greylock late Wednesday evening knocking WCDC, Channel 19, Adams, and Radio WANC-FM off the air. Damage was in the many thousands of dollars.</p>									

MASSACHUSETTS

Eastern Portion	21	Afternoon Evening			0	0	?	0	Heavy Rain, Flooding
<p>Heavy rain with thunderstorms brought downpours of from 1 to 3 inches of rain in a few hours. In Fall River heavy street flooding caused a number of pavements to collapse due to the rushing water which reached 2 to 3 feet deep in places. Many motorists were stranded temporarily. Similar street flooding occurred in many communities in the eastern portion of the state. In Methuen sixteen families were forced from their homes by the flood swollen Merrimac River. The river was reported to be the highest since 1938. Numerous cellars remained flooded from heavy rains earlier in the month. These additional heavy rainfalls brought monthly totals to over 12 inches in northern Plymouth County, and over 8 inches in a large adjoining area. On Cape Cod thousands of basements and standing water continued to be reported from South Yarmouth and Provincetown.</p>									

20 MICHIGAN

7 Miles SW of Allegan, Allegan County	06	1655EST			0	0	0	0	Hail
<p>Hailstones $\frac{3}{4}$ to 1 inch with heavy rain.</p>									
4 Miles ESE of Manchester, Washtenaw County	07	1628EST			0	0	0	0	Funnel Cloud
<p>Sighted by off-duty police officer.</p>									
Livingston County	07	1650EST			0	0	0	0	Hail
<p>Hailstones $1\frac{1}{2}$ inches.</p>									
5 Miles S of Holt, Ingham County	07	1715EST			0	0	2	0	Tornado (F0)
<p>Door torn from barn. Debris scattered over wide area. Observer saw "swirling mass of wind."</p>									
4 Miles E of Clinton, Lenawee County to 2 Miles SW of Saline, Washtenaw County	07	1725EST			0	0	0	0	Funnel Cloud
<p>Apparently two separate sightings of same cloud.</p>									
2 Miles N of Atlanta, Montmorency County	07	1754EST			0	0	0	0	Funnel Cloud
<p>Reported by sheriff's department and indicated on radar. Visible 4-5 minutes. Survey found no damage in area.</p>									
2 Miles SW of Kinderhook, Branch County	07	1854EST			0	0	0	0	Funnel Cloud
2 Miles SW of Goldwater, Branch County	07	1903EST	0.25	40	0	0	4	0	Tornado (F1)
<p>House damaged. Shed lifted onto truck. Roof ripped from barn.</p>									
Fairview, Montmorency County	07	1915EST			0	0	0	0	Hail
<p>Hailstones $3/4$ inch.</p>									
Southwestern, Livingston County	07	2000EST			0	0	0	0	Hail
<p>1 $3/4$ inches.</p>									
5 Miles NE of Tecumseh, Lenawee County	07	1925EST			0	0	0	0	Funnel Cloud
<p>Sighted by sheriff's deputy.</p>									
Ann Arbor-Saline, Washtenaw County	07	1940EST			0	0	2	0	Thunderstorm
<p>Power lines downed. Gas main ruptured by lightning.</p>									
Adrian, Lenawee County	08	1000EST			0	0	5	0	Lightning
<p>Church destroyed by fire.</p>									
SW shore of Saginaw Bay, from Linwood to Quincasssee, Bay and Tuscola Counties	21	0300-1500EST			0	0	7	0	Lakeshore Flood
<p>Storm surge raised water level to 68" above chart datum, with simultaneous 6 to 8 foot wind waves. Shoreline flooded up to $3/4$ mile inland. Current reversed and flood stage reached on lower courses of Saginaw and Kawkawlin Rivers. 250 houses and 150 mobile homes flooded; 700 persons evacuated. Major damage to 65 houses; moderate damage to 240 houses and 40 mobile homes. Extensive beach erosion. Roads and railroad washed out. Water main ruptured. Electrical and telephone service interrupted.</p>									

STORM DATA AND UNUSUAL WEATHER PHENOMENA

MARCH 1983

PLACE	DATE	TIME - LOCAL STANDARD	LENGTH OF PATH (MILES)	WIDTH OF PATH (YARDS)	NO. OF PERSONS		ESTIMATED DAMAGE		CHARACTER OF STORM
					KILLED	INJURED	PROPERTY	CROPS	
21 MINNESOTA									
North	7/8				0	0	3	0	Freezing Rain, Snow
	Rain in northwest Minnesota gradually changed to freezing rain and sleet during the morning of March 7th. During the afternoon snow and blowing snow spread through northwest Minnesota and temperatures began falling sharply. That night freezing drizzle and snow also moved into northeast Minnesota. Particularly hard hit was the northwest where snow and blowing snow continued through March 8th and where travel was hazardous. Accumulation of ice on power lines caused several power outages. The greatest snowfall reported was 7½ inches at Georgetown.								
22 MISSISSIPPI									
Warren County	4	2000CST			0	0	4	0	Wind/Funnel
	Thunderstorm winds produced widespread wind damage in Warren County. About 400 homes were without power due to downed power lines. A large tree fell and damaged a school dormitory. A funnel cloud was reported east of Vicksburg by the county sheriff's department.								
Sunflower County	4	2100CST			0	0	4	0	High Wind
	Thunderstorm winds severely damaged three light aircraft at the Indianola Airport.								
Scott County	4	2310CST			0	0	4	0	High Wind/ Flash Flooding
	Thunderstorm winds destroyed two barns and blew down numerous trees in the Goodhope community. Flash flooding closed many streets in Morton and Interstate 20 just east of Morton. One downtown business was flooded in Morton.								
Hattiesburg	5	0230CST			0	0	4	0	High Wind
	Thunderstorm winds collapsed the drive-under roof of a service station and blew down numerous trees in the Hattiesburg area.								
Jefferson Davis County	5	0705CST			0	0	0	0	Funnel Cloud
	The Mississippi Highway Safety Patrol reported two funnel clouds near Melba in southwest Jefferson Davis County.								
Neshoba County	5	1955CST			0	0	4	0	High Winds
	Thunderstorm winds damaged a mobil home and blew down numerous trees three miles west of Dixon.								
Leaksville, Green County	20	1015CST	1	200	0	0	6	0	Tornado (F3)
	A strong tornado dropped down just west of the Leaksville city limits. The tornado moved northeast for about one mile through town and lifted as it crossed the Chickasawhaw River just east of Leaksville. It destroyed 11 homes and damaged 39 others. Seven businesses were destroyed, including a large factory and a grocery store. The roof was blown off of the local high school. There were no injuries. The schools and the factory were empty because it was Sunday.								
23 MISSOURI									
Newton	26	1537 CST			0	0	0	0	Large Hail
	Golf ball size hail reported 1 west of Neosho.								
Vernon	26	1605 CST			0	0	0	0	Hail
	Hail reported covering the ground at Junction 54 and 43 west of Nevada. No size given.								
Ozark	26	1755 CST	1/2	50	0	0	2	0	Tornado (FO)
	A tornado touched down in an open field near Udall, sucking up trees in the field and lifted a swing set 40 feet into the air.								
Ozark	26	1800 CST			0	0	4	0	Damaging Wind
	Wind damaged power lines and did minor damage to several houses and farm buildings at Udall.								
Howell	26	1830 CST	1/4	50	0	0	4	0	Tornado (F1)
	A probable tornado touched down near White Church-Peace Valley just northeast of West Plains, uprooting trees, damaging buildings, tearing a machine shed off its foundation and damaging a truck. A funnel was sighted with this storm.								
24 MONTANA ————— NONE REPORTED									
25 NEBRASKA									
Panhandle of Nebraska	05	Daytime			0	0	0	0	Heavy Snow
	Heavy snow fell in areas of the panhandle. Some roads closed and travel became difficult as gusty winds drifted the snow. Reported snowfall included 8 inches at Kimball, 6 inches at Harrisburg and Chadron, although unofficial amounts of 10 to 20 inches were reported near the Wyoming line in Banner and Kimball Counties.								
Southwest and Central Nebraska	16	Morning -17 thru Evening			0	0	0	0	Heavy Snow
	Heavy wet snow fell during intervals totaling 12 inches at McCook, 6 at Thedford and Broken Bow, and around 4 to 5 at North Platte and Hayes Center. Thirty to forty m.p.h. winds caused some drifting the afternoon of the 17th. Numerous schools closed and vehicle accidents reported.								
Southwest and North Central Nebraska	19	Morning to Evening			0	0	3	0	Heavy Snow
	Heavy wet snow fell ranging 4 to 6 inches across the area from Imperial to Ainsworth. Numerous vehicle accidents were reported with one fatality.								
Panhandle of Nebraska	25	Morning thru Afternoon			0	0	0	0	Heavy Snow
	Heavy snow fell across the panhandle. Locally 18 inches of snow were reported to have fallen at Crawford, and 11 inches at Sidney. Other amounts were less including 5 inches at Scottsbluff, Chadron, Alliance, Hemingford and Rushville. Winds gusting to 35 m.p.h. followed the storm with some blowing and drifting. Three to five foot drifts were reported in Box Butte County.								
North Central Nebraska	25	Morning to Afternoon			0	0	0	0	Heavy Snow
	Snow developed in southwest Nebraska in morning and spread into North Central Nebraska, where it accumulated to around 6 inches along Highway 2 in the Middle Loup River Valley including Mullen.								
North Central, Central, Northeast and East Central Nebraska	25	Morning -26 to Night			0	0	5	0	Heavy Snow
	Heavy wet snow of 6 inches or more fell east and north of a line from Valentine to Gothenburg to Holdrege to Sterling to Nebraska City. The snow fell in a number of heavier intervals... one during the day on the 25th in east central and northeast Nebraska and then heavy snow across the entire area on the 26th. A pocket of very heavy snow of 20 inches or more fell in the northeast. Twenty-four inches was reported at Lyons and Bancroft, 21 at Emerson and 20 at Dodge, Uehling and Winside. Snowfall of 10 inches or more was quite common east and north of a line from Butte to Loup City to Seward to Bellevue. Travel was difficult throughout the area with a number of roads closed. Some power outages and tree damage were reported. Winds gusting 35 to 45 m.p.h. behind the storm drifted many east-west roads. The 13.3 inches of snow at Omaha was the heaviest spring snowfall on record. The snow caused portions of a grain elevator roof to collapse in Omaha. Many young calves were lost in central and north central Nebraska.								
Panhandle of Nebraska	30	Daytime			0	0	0	?	High Winds
	Winds gusted to around 55 m.p.h. in the Platte Valley of the panhandle during the day causing considerable blowing dust.								
26 NEVADA ————— NONE REPORTED									

STORM DATA AND UNUSUAL WEATHER PHENOMENA

MARCH 1983

PLACE	DATE	TIME - LOCAL STANDARD	LENGTH OF PATH (MILES)	WIDTH OF PATH (YARDS)	NO. OF PERSONS		ESTIMATED ¹ DAMAGE		CHARACTER OF STORM
					KILLED	INJURED	PROPERTY	CROPS	

27 NEW HAMPSHIRE

Statewide	11- 12	Late evening EST	0	0	5	0	0	Rain and Snow	
<p>Over one inch of rain fell statewide. At Concord, this brought the sum for the first 12 days of March to 4.05 inches which is 1.12 inches over the normal for the month. The rain turned to snow over the mountains with nearly 16 inches falling in Pinkham Notch and just over 12 inches in Franconia Notch...A bonus for the ski areas. Many streams and small rivers overflowed their banks causing minor street and highway flooding and a few washouts. State highway crews patched road shoulder washouts in Moultonboro, Tuftonboro and Madison. The Piscataquag River, the highest it has been since 1977 threatened about 50 Goffstown homes as its waters lapped at the doors of several homes.</p>									
Stratford and Rockingham Counties	18- 19	Afternoon	0	0	5	0	0	Heavy Rain	
<p>Anywhere from 1.50 to nearly 3 inches of rain fell over the seacoast area in about 24 hours beginning early Friday afternoon. The rain caused the worst flooding in 30 years on the Salmon Falls, the Cocheo, the Isinglass, the Lamprey and the Oyster Rivers. Many cellars were flooded and major damage was done to many gravel and tarred roads in seacoast communities. Rochester appeared to be hardest hit with 17 roads closed due to flooding or washouts during the weekend and will cost the town about \$75,000 for road work.</p>									
Rye, Rockingham Cty	21	Evening	0	0	3	0	0	Lightning	
<p>A lightning strike caused minor damage to a Rye home when it ignited a large roll of Christmas wrapping paper in the cellar. Damage was due to smoke. There were a few minor power outages through the area due to the thunderstorm.</p>									
Statewide	27- 28	Evening	0	0	4	0	0	Snow and Rain	
<p>Snow turning to rain caused heavy water-logged snow to break off tree limbs which took down utility lines. Hardest hit was from the Sunapee Lakes region of Sullivan County eastward into northern Stratford County, where at least 8,000 homes were without power early Monday morning. A tree was felled onto a roof of a Rochester home doing minor damage. Heavy wet snow, accumulating 7 to 9 inches in the White Mountains and Sunapee Lakes Region, caused many schools in that area to close or delay their openings Monday.</p>									

28 NEW JERSEY

Passaic County	19	AM- PM EST	0	0	?	?	?	Flooding	
<p>One of the most seriously affected area during the heavy rainpour was Wayne, where several streets were closed in the Hoffman Grove and Old Wayne areas after the Passaic River overflowed at several locations. A number of people were evacuated from their homes.</p>									

29 NEW MEXICO ————— NONE REPORTED

30 NEW YORK, Coastal

Extreme SE Nassau Co., Suffolk Co., New York City and Westchester	18- 19	0835 to 0810EST	0	0	?	?	?	Heavy Rain Wind	
<p>Wind driven torrential rain occurred on the two days setting a new record for the month by making this the wettest March on record.</p>									
Extreme SE Nassau Co., Suffolk Co., New York City and Westchester	21	0825 to 1340EST	0	0	?	?	?	Heavy Rain Wind Hoax	
<p>The United Press International was informed of a typhoon warning by an unknown. The false warning was clarified within 10 minutes. There were heavy rains and strong gusts of wind which triggered floods and caused scattered property damage.</p>									
Extreme SE Nassau Co., Suffolk Co., New York City and Westchester	27	Noon to Midnight EST	0	0	?	?	?	Heavy Rain Wind	
<p>The 24 hour peak wind gust averaged over 40 mph along with the 1.67 inches of precipitation which fell in 12 hours drenched an already soggy earth causing widespread flooding and numerous traffic mishaps.</p>									

PLACE	DATE	TIME - LOCAL STANDARD	LENGTH OF PATH (MILES)	WIDTH OF PATH (YARDS)	NO. OF PERSONS		ESTIMATED ¹ DAMAGE		CHARACTER OF STORM
					KILLED	INJURED	PROPERTY	CROPS	

30 NEW YORK, Central

EASTERN NEW YORK	11	2300EST	0	20	6	0	0	Snow	
<p>Snow started falling in Eastern New York on Friday evening. Hardest hit areas were the mountain areas of Northern Dutchess, Columbia, and Southern Rensselaer Counties. Snow depths ran over one foot in these areas. Phone and power lines were knocked out of service in many areas. Many car accidents resulting in injuries have been blamed on snow covered roads.</p>									
Eastern New York	18	AM	0	?	?	?	?	Heavy Rain	
<p>Rain started falling around midday Friday. Rain totaled about 3 inches in the Lower Hudson Valley-Catskill areas. Monroec and Ashokan Reservoir both recorded 3.07 inches of rain. Several areas of Ulster County reported flooding of roads and cellars. In Central New York, colder temperatures resulted in icy roads on Monday morning.</p>									
LOWER HUDSON VALLEY AND THE CATSKILLS	20	PM	0	0	7	?	?	Rain	
<p>Wet weather the previous few days had created soggy ground conditions. Rainfall Monday sent many rivers and streams over their banks. Water levels in local reservoirs climbed several feet in just a day or two. Rain was also blamed for loosening up rock in Orange County. The resulting rock and mud slide blocked Rte 218 between Cornwall and West Point.</p>									
ONEIDA COUNTY	23	Early AM	1	1	4	0	0	Freezing Rain	
<p>Light rain and below freezing temperatures created slick driving conditions in parts of Oneida County. These road conditions resulted in an accident that claimed one life.</p>									
JEFFERSON COUNTY	23	Early AM	0	14	5	0	0	Freezing Rain	
<p>Ice covered roads between Watertown and Alexandria Bay was blamed for many car accidents, which sent 14 persons to area hospitals.</p>									
SPARROWBUSH ORANGE COUNTY	28	1800EST	0	1	6	0	0	Rain	
<p>Engineers believe that the rain, which was heavy at times, had washed away soil that held rock on the hill. This was compounded by the warm, then cold weather which had occurred throughout the winter. Rte 97 was closed for several days due to the rock slide. Largest slab to fall was estimated at 25 tons.</p>									

30 NEW YORK, Western

All of Western and Central New York especially Monroe, Wayne, Southern Erie, Chautauque & Oswego Counties	21	Snow & Ice	5	0	0	0	0	Snow & Ice	
<p>Snow of up to 6 inches and icy roads made driving hazardous. There were numerous vehicular accidents. Many motorists were hospitalized and a few killed. There were school closings. Ice and snow laden trees sagged across power lines resulting in hours of power loss for up to 200,000 homes. Hundreds lost telephone service.</p>									
Southern Erie, Wyoming and other parts of Western and Central New York		Entire Winter			4			Unseasonably Mild	
<p>The mild 1982-83 winter is blamed for sour and meager supply of maple syrup.</p>									

31 NORTH CAROLINA

Monroe, Union County	6	1920EST	2	100	0	9	6	0	Tornado (F2)
<p>A tornado accompanied by large hail and heavy rain moved east then northeast through the northeastern section of the city, causing considerable damage. An elementary school was badly damaged, as was a National Guard Armory, several homes, a church which was under construction, a warehouse, powerlines and several automobiles. Eight of the injuries, all of which were slight, occurred when the roof of an apartment building was ripped away and carried 300 feet perpendicular to the path of the storm.</p>									
Mocksville, Davie County	6	1930EST	Short Narrow	0	0	3	0	0	Tornado (F0)
<p>A small tornado touched down briefly near Mocksville, destroying a carport and slightly damaging two mobile homes.</p>									
Winston-Salem, Forsyth County	6	2000EST	.2	100	0	0	4	0	Tornado (F1)
<p>A tornado touched down in the southeastern section of the city tearing the roof off one home and damaging several others. Dozens of trees were uprooted or snapped by the tornado which moved toward the northeast.</p>									

STORM DATA AND UNUSUAL WEATHER PHENOMENA

MARCH 1983

PLACE	DATE	TIME - LOCAL STANDARD	LENGTH OF PATH (MILES)	WIDTH OF PATH (YARDS)	NO. OF PERSONS		ESTIMATED DAMAGE		CHARACTER OF STORM
					KILLED	INJURED	PROPERTY	CROPS	

PLACE	DATE	TIME - LOCAL STANDARD	LENGTH OF PATH (MILES)	WIDTH OF PATH (YARDS)	NO. OF PERSONS		ESTIMATED DAMAGE		CHARACTER OF STORM
					KILLED	INJURED	PROPERTY	CROPS	

— NORTH CAROLINA

Southern Piedmont	8	Late PM		1	15	4	?	?	Hail, Lightning
<p>Severe thunderstorms moved through the counties of Anson, Stanly, Mecklenburg and Union accompanied by large hail, heavy rain and lightning. A group of baseball players from Charlotte Latin High School were struck by lightning at 1630EST as they sought shelter from the storm. Of the 15 students struck, one was fatally injured and another critically. The remaining students were released from the hospital after observation. Hail ranging in size 1/2" to 2 1/2" in diameter was reported throughout the four counties. The worst damage occurred at North Stanly High School, where hundreds of skylights were destroyed and the roof was badly damaged by egg-size hail. Numerous automobiles were also damaged.</p>									
Trinity, Randolph County	8	1800EST	Short Narrow	0	0	2	0	0	Tornado (F0)
<p>A small tornado touched down near Trinity where it uprooted trees, destroyed an outbuilding and damaged two mobile homes.</p>									
Table Rock, Burke County	9	1700EST		0	4	0	0	0	Lightning
<p>Four men were struck by lightning, seriously injuring one of them as they were mountain climbing.</p>									
Eastern and Central Sections	17-18			0	0	5	?	?	Wind, Flooding
<p>A strong Northeaster moved through eastern sections of the state accompanied by gale-force winds and heavy rains, which produced widespread flooding, heavy surf and beach erosion. Substantial damage to trees, powerlines, signs, windows and shingles occurred over many eastern locations. Along the immediate coast, considerable damage was inflicted on sand dunes, piers and sea walls. Highway 12 was closed for several days as up to 2 feet of sand and 4 feet of water covered the road and caused extensive roadbed damage from Hatteras to Nags Head. A condominium under construction at Kure Beach was destroyed by the high winds. The water level was 8.5 feet above normal at Havlock on the lower Neuse and 7 feet above normal at the Cedar Island Ferry Terminal. Further inland minor flooding was common, making many secondary roads impassable. Winds from the storm reached 75 mph at Cedar Island and 65 mph at Wilmington. Rainfall totals from the storm include: Raleigh-Durham 3.88", Wilmington 3.25", Fayetteville 2.55", Brunswick City 4.28" and Elizabethtown 5.35".</p>									
Rocky Mount, Nash County	18	1340EST	Short Narrow	0	0	5	0	0	Tornado (F2)
<p>A tornado spawned from the strong cyclone discussed above touched down north of the city where it damaged four businesses. A Lowes warehouse had its roof torn off and suffered \$250,000 worth of damages. Several other buildings, including a trailer which was turned over, received damage.</p>									
Stonewall, Pamlico County	21	0700EST	Short Narrow	0	0	4	0	0	Tornado (F0)
<p>A small tornado touched down briefly near Stonewall damaging a farm shed and several cars as well as uprooting several trees.</p>									
Ponzer, Fairfield, Hyde County	21	0710EST	12	100	0	0	5	0	Tornado (F1)
<p>A tornado touched down near Highway 264 at Ponzer damaging two homes, several outbuildings and uprooting numerous trees. The tornado moved east where it later damaged two trailers and two cars, and downed trees and powerlines near Fairfield.</p>									
Onslow County	21	Morning		0	0	?	?	?	High winds, Hail
<p>Strong thunderstorms moved through Richlands and the Catherine Lake area producing 3/4" hail, and high winds, which uprooted many trees. Winds reached 90 mph at the Albert Ellis Airport west of Jacksonville.</p>									
Entire State	24			0	0	?	?	?	Snowstorm, Wind
<p>An unusually late winterstorm moved through the state producing heavy snow and gale-force winds. Also uncommon was the area of heaviest snow, which extended from the southern and central Piedmont into the entire coastal area. Snowfall started around dawn near Charlotte and quickly moved northeast. Many coastal areas, however, did not receive snow until the evening hours, when it was accompanied by thunder and lightning. The snow, which was the heaviest for so late in the season in many areas, was wet and accumulated on trees and powerlines causing many power outages. Had the storm not been preceded by warm, Spring-like conditions, snowfall accumulations would have been much greater. Winds from the storm reached 87 mph in Carteret County and exceeded 70 mph in many other locations. This resulted in downed trees and powerlines and some structural damage. A mobile home in Orway lost its roof during the height of the storm. Snowfall amounts include: Greensboro Trace, Asheville 1", Raleigh-Durham 3", Charlotte 10", Fayetteville 9", Greenville 5", Clinton 8", Elizabeth City 7" and Wilmington 5".</p>									
Northwest Piedmont	27	Evening		0	0	?	?	?	Lightning, Hail
<p>A line of severe thunderstorms moved through the western Piedmont counties of Iredell, Davie and Yadkin producing hail up to 2 1/2" in diameter, high winds and heavy rain. Lightning struck a house in Haptonville blowing its chimney apart and causing other structural damage.</p>									

32 NORTH DAKOTA

Statewide	04-07	Night Evening		0	0	7	0	0	Winter Storm
<p>A winter storm which began in western North Dakota and moved into eastern North Dakota caused scattered areas of heavy snow (8 inches at Bismarck in Burleigh County and 7 inches at Minot in Ward County); considerable freezing rain, especially in the north central part of the state; and gusty winds (40 MPH at Bismarck and 38 MPH at Fargo in Cass County).</p> <p>Ice accumulations of up to 8 inches caused numerous power lines, power poles and tree branches to snap; and caused several communication transmission towers (including two 1,000 foot television towers, and a 1,000 foot radio tower) to topple. About 10,000 people were without power for more than 24 hours (some for up to two weeks).</p> <p>Because of the storm, some schools and businesses were shut down; several sport and social events were cancelled; flights at Minot AFB were suspended; traffic accidents occurred due to the icy roads; trees were damaged and Governor Allen I. Olson declared a Disaster Emergency in all or part of 31 counties.</p> <p>A 33 year old lineman was electrocuted while repairing power lines near Washburn in McLean County; a second lineman broke his ankle when he slipped from an icy pole in southern Adams County; and a third lineman suffered severe burns to one leg and was knocked from a pole he was working on near Garrison (McLean County).</p>									
Bowman (Bowman County)	30	1630CST		0	0	0	0	0	Thunderstorm Winds
<p>Thunderstorm winds of 60 MPH were recorded. No damage reported.</p>									
Dickinson (Stark County)	30	1635CST		0	0	0	0	0	Thunderstorm Winds
<p>Thunderstorm winds of 81 MPH were recorded at the airport. No damage reported.</p>									
33 OHIO									
Zanesville, Muskingum County	08	1000 EST	-	-	0	2	3	0	Lightning
<p>A thunderstorm passed through the area with several lightning strikes starting fires, interrupting power and damaging buildings. Two restaurant employees were injured on the south side of Zanesville when they were struck by lightning while working outside the Blue Drummer Steak House.</p>									
Northwest Quarter or Ohio	21	0400-0600 EST	-	-	0	0	4	0	Ice Storm
<p>An area of freezing rain left a one inch coating of ice in several northwest Ohio counties. The weight of the ice downed utility lines and trees. Several trees fell on houses or automobiles.</p>									
Hamilton County	27	1325-1340 EST	-	-	0	0	2	0	Hail
<p>A thunderstorm crossed the county and produced hail ranging from 3/4" to 1 3/4" in diameter. The first report of large hail was at 1325 EST in southern Cincinnati and the last report of large hail was at 1340 EST in the northwest Cincinnati suburbs.</p>									
Greenville, Darke County	27	1420 EST	-	-	0	0	2	0	Hail
<p>Three quarter inch diameter hail fell from a thunderstorm that crossed the county. Damage was slight.</p>									
Lewisburg, Preble County	27	1425 EST	-	-	0	0	2	0	Hail
<p>A thunderstorm produced 3/4" hail in the northern part of the county near Lewisburg.</p>									
Troy, Miami County	27	1430-1445 EST	-	-	0	0	4	0	High Wind
<p>A thunderstorm produced damaging winds in the northeast sections of Troy. Several trees and utility lines were downed and some buildings were damaged.</p>									

STORM DATA AND UNUSUAL WEATHER PHENOMENA

MARCH 1983

PLACE	DATE	TIME - LOCAL STANDARD	LENGTH OF PATH (MILES)	WIDTH OF PATH (YARDS)	NO. OF PERSONS		ESTIMATED DAMAGE		CHARACTER OF STORM
					KILLED	INJURED	PROPERTY	CROPS	

PLACE	DATE	TIME - LOCAL STANDARD	LENGTH OF PATH (MILES)	WIDTH OF PATH (YARDS)	NO. OF PERSONS		ESTIMATED DAMAGE		CHARACTER OF STORM
					KILLED	INJURED	PROPERTY	CROPS	

OHIO

Columbus, Franklin County	27	1445 EST	-	-	0	0	0	0	High Wind
<p>A thunderstorm crossed the county with gusty winds. An isolated report of winds estimated at 58 MPH was received from OSU Airport in the northwest part of the county. No damage was reported anywhere in the area.</p>									
Urbana, Champaign County	27	1515 EST	-	-	0	0	2	0	Hail
<p>A thunderstorm moved through the area and produced 3/4" diameter hail. Damage was only slight.</p>									
Randolph, Portage County	27	2005 EST	-	-	0	1	0	0	Lightning
<p>Lightning struck a house in Randolph, southern Portage County, and injured an 18 year old boy who was lifting weights in his basement. He received severe electrical burns to the bottoms of his feet.</p>									
Williams County	29	Evening	-	-	0	0	0	0	Flooding
<p>The Tiffin River at Stryker, Ohio, rose slightly out of its banks flooding low lying areas.</p>									

OKLAHOMA

Alfalfa County	22-23				0	0	?	?	Snow
<p>A two day snowfall total of 4 inches was reported at Cherokee. This gave them over 8 inches in less than a week.</p>									
Anadarko, Caddo County	25	Afternoon			0	0	4	?	Wind
<p>High wind blew over a large sign at a motel. The sign fell on a parked van. Both the sign and the van received extensive damage.</p>									
Harmon County	25	1615CST			0	0	?	?	Hail
<p>A farmer in northern Harmon County reported golf-ball size hail.</p>									
Centralia, Craig County	26	1330CST	1.0	50	0	1	4	0	Tornado (F2)
<p>A small tornado destroyed a trailer house. One woman received minor injuries, while her two children were uninjured.</p>									
Welch, Craig County	26	1400CST	0.3	30	0	0	4	0	Tornado (F1)
<p>A small tornado damaged buildings at a coal company three miles north and three miles west of Welch. The condensation funnel did not reach completely to the ground. Damage was estimated near \$25,000.</p>									
Skiatook, Tulsa County	26	Night			0	0	4	0	Wind
<p>High winds blew over a city equipment barn.</p>									
Blackwell, Kay County	27	All Day			0	0	?	?	Flood
<p>The Chikaskia River near Blackwell flooded, closing roads and forcing farmers and ranchers to evacuate livestock from low areas. While the flood stage is 26 ft, the river reached 28.44 ft.</p>									
Maurika, Jefferson County	29	2115CST			0	0	?	?	Wind
<p>Three-quarter inch hail was reported.</p>									

34 OKLAHOMA

Blanchard, Grady County	03	1300CST	0.1	20	0	0	4	0	Tornado (F1)
<p>A small tornado was reported 6 miles west of Newcastle in Grady County. A barn destroyed and five cattle were killed. The tornado was on the ground a very short period of time. Debris from the barn killed the cattle.</p>									
Hollis, Harmon County	03	1723CST	5.0	10	0	0	1	0	Tornado (F0)
<p>A small rope shaped tornado touched down one mile north and one mile west of Hollis. The tornado moved in a northwesterly direction and dissipated about one mile north and one mile west of the small community of Arnett (Harmon County). The only reported damage was some scattered irrigation pipe and a path across a wheat field.</p>									
Vinson, Harmon County	03	1858CST			0	0	?	?	Hail
<p>Golfball sized hail reported between Vinson and Reed.</p>									
Erick, Beckham County	03	2025CST			0	0	?	?	Wind and Hail
<p>Winds of 55 to 65 MPH were reported a few miles southwest of Erick. Marble sized hail was also reported.</p>									
Enid, Garfield County	04	1720CST			0	0	0	0	Funnel Cloud
Cimarron and Texas Counties	15	Morning			0	0	?	?	Snow
<p>Four inches of snow was reported on the ground in Guymon. The snowfall line ended about 30 miles east of Guymon.</p>									
Lamont, Grant County	15	Evening			0	0	?	?	Hail
<p>Hail up to golfball size was reported east of Lamont.</p>									
Panhandle	18	All Day			0	0	?	?	Snow
<p>Snowfall amounts of up to 4 inches (at Guymon) were reported.</p>									
Panhandle and Northwest	19	All Day			0	0	?	?	Snow
<p>Snow fell over a large area. Guymon received another 4 inches, bringing their two day total to 8 inches. Cherokee, in Alfalfa County, reported nearly 4 inches.</p>									
East	21	Morning			0	0	?	?	Freeze
<p>A late freeze damaged fruit trees over much of the eastern part of the state. Most of the plum, pear and apricot crop was destroyed. The peach and cherry crops were 30 to 50% destroyed. The temperature was below 28 degrees over a large area for more than 2 hours, while the temperature in some areas dropped to 23 degrees.</p>									

35 OREGON — NO REPORT RECEIVED

36 PENNSYLVANIA, Eastern

Bucks County	21	1430 EST	8	50	0	0	4	0	Tornado (F1)
<p>The Tornado made a skipping path across the county- starting in Warminster and ending a little past Wrightstown. Quite a bit of damage occurred along the path with at least three houses heavily damaged. One automobile was flipped over and another was moved about 50 feet and deposited on a stone wall. Many trees (of all sizes) were uprooted or broken off and many houses and other buildings received minor damage. There were four good eyewitness accounts of the tornado. FPP 121</p>									

36 PENNSYLVANIA, Western— NONE REPORTED

37 RHODE ISLAND

Northern & Eastern Portions	21	Late Afternoon & Evening			0	0	4	0	Lightning, Heavy Rains
<p>In Woonsocket several homes were struck by lightning and a small garage containing a new car and motorcycle was destroyed by a fire ignited by lightning at 7:21 P.M. Lightning also struck homes in E. Providence, Bristol, and Warren resulting in some property damage. Heavy rain accompanying the storms resulted in some street and basement flooding. In Providence an electric company lineman accidentally fell into an open manhole and was drowned in the storm swollen sewerage system. During the previous two days beach erosion in Matunuck washed out the foundation of a restaurant and cottage.</p>									
Woonsocket	22	0030EST			0	0	4	0	Lightning
<p>A 200-year old barn was set afire by lightning and sustained damage estimated at \$7,000.</p>									

STORM DATA AND UNUSUAL WEATHER PHENOMENA

MARCH 1983

PLACE	DATE	TIME - LOCAL STANDARD	LENGTH OF PATH (MILES)	WIDTH OF PATH (YARDS)	NO. OF PERSONS		ESTIMATED ¹ DAMAGE		CHARACTER OF STORM
					KILLED	INJURED	PROPERTY	CROPS	
38 SOUTH CAROLINA									
Reevesville, Dorchester County	6	0900EST			1	0	0	0	Heavy Rains
A small child was drowned when he fell into a septic tank excavation pit which had filled with water from heavy rains.									
3 miles West of Winnsboro, S.C. Fairfield County	6	1830EST	1/4	20	0	0	3	2	Tornado (F1)
Small tornado observed dipping down out of thunderstorm. Tornado destroyed several trees, one small building and damaged roof on nearby residence as it moved along a narrow SW to NE path just south of SC#34 3 miles west of Winnsboro.									
Liberty Hill, Kershaw County	6	1900EST	1.1	15	0	0	3	0	Tornado (F1)
Tornado touched down in three places. Trees were uprooted, a house was damaged, shingles blown off and windows broken, a car was damaged by a falling tree and a barn was destroyed.									
Statewide	17				3	0	6	5	Wind, Rain, Flooding and Beach Erosion
An intense low pressure area centered in the Gulf of Mexico on the 17th moved to South Carolina on the 18th. This storm produced more than 6 inches of rain in northeast South Carolina and heavy rains elsewhere. There was extensive flash flooding, with Black Creek in Florence County reaching near record levels. Extensive flooding occurred along coastal rivers with the highest on the Waccamaw at Conway since 1945. Schools were forced to close in Florence and Dillon Counties. 60 people spent the night in a Red Cross shelter at Lake City, 100 families were affected on the Waccamaw River with 30 being evacuated. A two year old Cayce boy was caught in a storm sewer and drowned. Also, a six year old boy fell into a drainage ditch in Goose Creek near Charleston and was drowned. A van hydroplaned in Marion County killing one person. Many people over the state were involved in a rash of rain-related accidents. Beach erosion along the entire coast was heavy. Several beach homes were lost or damaged due to erosion.									
Statewide	24				0	0	4	2	Winter storm, snow, high winds
Snow ranging from a trace in southern S.C. to 2 inches or more in central S.C. upwards to 10 inches or more in York County fell early on the 24th. The low pressure area producing the snowfall moved out of the Gulf of Mexico to a position off the S.C. coast on the 24th, hence northward. Gale force winds occurred along the coast while precipitation of 2 to 3 inches further aggravated flooding conditions.									
Myrtle Beach, Horry County	24	1700EST			0	0	3	0	High winds, Thunderstorms
High winds during a thunderstorm overturned a boat trailer, blew large doors off a hotel, damaged roof of a building and stripped a porch off a house.									
Coastal Plains	1-31				0	0	6	6	Flooding
Flooding continued throughout the month on the Little Pee Dee and on the Waccamaw rivers as well as on the Great Pee Dee below Florence. Additionally flooding developed on the Lynchies and the lower Santee Rivers late in the month. This was the heaviest flooding on the Waccamaw River since 1945. Flooding also occurred on the Black, Congaree, Broad, Saluda, Wateree, and Edisto Rivers.									

PLACE	DATE	TIME - LOCAL STANDARD	LENGTH OF PATH (MILES)	WIDTH OF PATH (YARDS)	NO. OF PERSONS		ESTIMATED ¹ DAMAGE		CHARACTER OF STORM
					KILLED	INJURED	PROPERTY	CROPS	
39 SOUTH DAKOTA									
West and Northcentral	4-7	Late Eve-4 Early a.m.-7			0	0	4	0	Snow, freezing rain, wind.
A winter storm hit the west and northcentral sections, starting out as rain, changing to freezing rain and finally to snow. Snow amounts ranged from 4 to 12 inches, with heaviest amounts in the Black Hills. Gusty winds up to 50 mph, coupled with ice coated power lines, produced scattered power outages that lasted up to two days in western sections. Gusty winds continued into the morning of the seventh, piling snow into six foot drifts in places, which resulted in blocked roads and numerous school closings.									
Eastern half and Northern Black Hills	25-27	Eve 25th-27th			0	0	0	0	Snow, Wind
A spring snowstorm hit the eastern half of the state and the Black Hills area, beginning as rain mixed with snow and changing to snow. Snow amounts ranged from 2 to 18 inches, with heaviest amounts in the northern Black Hills and southeastern portions. Gusty northeasterly winds of up to 35 mph caused blowing and drifting snow, making travel hazardous. As a result, many secondary roads were closed, weekend activities and church services were cancelled and some schools were closed on Monday and Tuesday.									
40 TENNESSEE									
East Tennessee	26-27								High Winds
Southwest winds gusting to 51 MPH affected East Tennessee Saturday afternoon and night and again on Sunday afternoon. High pressure on the Virginia Coast moved slowly eastward into the Atlantic as a low pressure system in Oklahoma tracked northeastward across Illinois into lower Michigan. The pressure pattern created strong winds over East Tennessee, and wind speeds were magnified by the terrain.									
Knoxville Airport, Blount County	25	2015CST							Wind
Winds were measured gusting to 39 MPH.									
Chattanooga, Hamilton County	27								Wind
Winds were measured at the National Weather Service Office gusting to as high as 51 MPH. Wind gusts recorded included: 51 MPH at 1243CST, 45 MPH at 1337CST, 46 MPH at 1400CST.									
Knoxville Airport, Blount County	27								Wind
Winds were measured gusting to 45 MPH at 1328CST and to 48 MPH at 1514CST. High winds were blamed for downing trees and power lines throughout the county.									
Tri-Cities Airport, Sullivan County	27								Wind
Winds were recorded gusting to: 44 MPH at 1526CST, 51 MPH at 1638CST, 45 MPH at 1903CST.									
Bradley, Hamilton and Marion Counties	26-27						?	?	Wind
Trees and power lines downed by strong winds. Signal Mountain area was one of the worst areas affected. In north Chattanooga, a tree fell on two cars. In downtown Chattanooga near Central Soya, two men were pulled from the Tennessee River after their canoe was capsized by strong winds. The men were in the water for an hour and were treated and released from a local hospital.									
Warren County	26-27								Wind
Half of a school building roof at the Viola School was damaged seriously by high wind. A storage building lost part of its roof at a junior high school. Trees were down in rural areas, two plate glass windows in store fronts in McMinnville were broken, and one delivery bay at Warren County Freight Lines was damaged.									
Etowah, McMinn County	26-27								Wind
High winds estimated to gust in excess of 50 MPH damaged several businesses and homes and blew down trees. Large plate glass windows also fell victim to the winds. Among damage reported, plate glass windows were broken at Galloway's Grocery Store; a storage building destroyed at Pick's Drive-In; and one concrete block wall of a self-service car wash collapsed. Many signs were blown down or damaged, and some power lines were downed by the wind or falling trees.									

STORM DATA AND UNUSUAL WEATHER PHENOMENA

MARCH 1983

PLACE	DATE	TIME - LOCAL STANDARD	LENGTH OF PATH (MILES)	WIDTH OF PATH (YARDS)	NO. OF PERSONS		ESTIMATED ¹ DAMAGE		CHARACTER OF STORM
					KILLED	INJURED	PROPERTY	CROPS	

PLACE	DATE	TIME - LOCAL STANDARD	LENGTH OF PATH (MILES)	WIDTH OF PATH (YARDS)	NO. OF PERSONS		ESTIMATED ¹ DAMAGE		CHARACTER OF STORM
					KILLED	INJURED	PROPERTY	CROPS	

41 TEXAS, Northern ————— NO REPORT RECEIVED

41 TEXAS, Southern

Blanco County	4	0400CST			0	0	?	?	Hailstorm
A thunderstorm moving east-northeastward out of Kendall County produced a short burst of golfball-sized hail near Twin Sisters.									
Travis County	4	0415CST			0	0	?	?	Hailstorm
3/4-inch hail was reported in a severe thunderstorm near Lakeway on the south side of Lake Travis.									
Williamson County	4	0430CST			0	0	5	0	Tstm winds
A strong gust of wind from a severe thunderstorm caused damage to a warehouse and a lumberyard at Georgetown. Materials from the yard were strewn for several hundred feet, including an 18-foot metal door that was tossed 30 to 40 feet.									
Kendall County	4	0715CST	4	50	0	0	4	0	Tornado (F1)
		0718CST			0	0	0	0	Rain, hailstorm
		0720CST	4	100	0	1	5	0	Tornado (F2)
		0735CST	1	20	0	0	2	0	Tornado (F0)
A severe thunderstorm developed in western Kerr County and moved eastward into Kendall County. It produced at least three known tornadoes and may have produced as many as three more.									
As it crossed the Kendall County line, 2 miles south of Comfort, it produced a tornado. The tornado moved toward the northeast, just skirting the east side of Comfort, crossing highway 473, and continuing for two more miles before dissipating. The tornado damaged trees and fences and destroyed one small shed.									
As the thunderstorm continued eastward, it produced a second tornado near I-10, about 6 miles southeast of Comfort. Witnesses reported strong winds, followed by very heavy rain and spotty large hail before the tornado struck. The second tornado, larger than the first, moved toward the northeast. It destroyed numerous trees and fences, power line and telephone poles and damaged several barns. It died some 5 miles south of Sisterdale. One woman, standing outside and away from her home, saw the tornado as it approached. She ran into a small tin shed for shelter. The tornado took the shed apart, tossing pieces for several hundred yards. The woman received numerous cuts and bruises but survived.									
The last reported tornado struck near 0735CST about 4 miles north of Kendall. It was small and rather short-lived.									
Montgomery County	4	1400CST	.5	20	0	0	0	0	Tornado (F0)
A small tornado was reported by the public 2 miles east of Montgomery, along SH105. It was short-lived.									
Kleburg County	4	1430CST			0	0	0	0	Hailstorm
A brief hailstorm produced 1/2-inch to occasionally 1-inch hail at Padre Island Ranger Station, in Kleberg County. No damage was indicated.									
Tyler County	4	1445CST			0	0	0	0	Funnel Cloud
A short-lived funnel cloud was spotted by the public 8 miles west of Woodville.									
Val Verde County	4	1200CST			0	0	0	0	Tstm winds
A gust of wind to 66 mph was reported in a severe thunderstorm on the south side of Amistad Reservoir.									
Hidalgo County	15	1700CST			0	0	?	?	Hailstorm
Golfball-sized hail from a severe thunderstorm was reported in the city of McAllen.									
Hidalgo County	15	1700CST	6.1	900	0	10	6	6	Tornado (F3)
A severe thunderstorm that developed in northwestern Hidalgo County moved southeastward, producing a tornado near the central portion of the city of Harlingen. A comprehensive survey by NWS personnel from the Brownsville office provided the following information:									
Eyewitnesses reported the first sighting of a funnel approximately four miles southwest of the center of Harlingen about 1700CST. The tornado was preceded by ping pong ball sized hail. At initial touchdown only a few limbs were blown off trees. As the tornado began to expand into a multiple vortex, it unroofed and partially destroyed a large barn. The tornado was described as a grayish white pendant cloud with straight sides and a flat bottom, not reaching the ground. Beneath it were 2 or 3 "whirlwinds", indicating the multiple vortex nature. The tornado was moving to the southeast.									

————— TEXAS, Southern

									The 1710CST, it was about .5 miles southeast of the initial touchdown point with a damage track .5 miles wide, and was producing the most significant damage, estimated at F3 level. It tossed a mobile home about and then folded several steel rails from the home around a power pole. A resident of the mobile home suffered severe head cuts and a shattered pelvis from flying debris. A set of wheels from the home was thrown into a nearby pickup in which a woman and four small children were riding. No one was injured, although the vehicle was severely damaged.
The tornado then tossed a dump truck 80 to 100 feet and blew a van 80 feet into a yard. One man was nearly killed as he left a small building to get into his car and a piece of steel was blown through the window of the car. The tornado moved southeastward, damaging 3 homes and destroying numerous trees. A second man went outside to put his car in the garage when the hail began. One of the garage doors was slammed into the car by the wind. As the man attempted to free the door, he was picked up by the wind and tossed about 50 feet. He crawled back into the house on his hands and knees. At this time the tornado had moved to approximately 3 miles southeast of the initial touchdown point. It lifted and remained above the ground, causing no damage, as it moved south-eastward just over one mile.									
The tornado touched down and made an abrupt turn to the right, now moving to the south. It had a width of between .25 and .5 miles and caused mostly F0 and F1 type damage to roofs and windows of homes. A mobile home that had not been tied down was destroyed. Three power poles were snapped off about halfway up. By 1720CST, it had moved about 1.5 miles after having turned to the south and began to turn again. Just as it did, it struck a home and mobile home, causing considerable damage. It was reported as still being preceded by rain and large hail and was accompanied by a "roar".									
With a width now less than .25 miles, the tornado began to track to the southwest for near .75 miles. The last damage involved three well-constructed homes, two of which were of brick veneer.									
Residents reported a loud swishing sound in the trees, then an explosion and their ears popped. The power went off as the tornado struck the homes, causing extensive roof damage with minor wall damage. The tornado died in a sugar cane field nearby.									
Three persons were taken to a hospital as a result of injuries and two were released. One woman was treated for severe lacerations to the head and body from flying debris. Several others were also treated for minor cuts and bruises. Two persons in their home reported hearing a "roaring sound" and moved quickly from their living room into a closet. After the tornado, they noted that the living room windows had shattered, along with the patio door, and that the room was filled with broken pieces of glass.									
The damage list included several mobile homes demolished or damaged, two small frame homes destroyed, two homes unroofed, and several homes with significant roof or window damage. Two pickups, a van, a car and several farm implements were damaged or destroyed. Numerous utility and telephone poles as well as trees were knocked down.									
Several persons interviewed after the storm reported that they had turned their televisions off before it struck to prevent lightning damage, and had missed the warning that was issued. Most indicated that after a first reaction to take shelter, they were virtually paralyzed during the time they were within the tornado, a period ranging from seconds to minutes.									
Hidalgo, Willacy, Cameron Counties	15	2135CST			0	0	5	?	Tstm winds
A series of strong thunderstorms over the area including Hidalgo, Willacy and Cameron Counties, produced damaging winds. Wind gusts to 63 mph were reported at McCook, in western Hidalgo County at 2135CST. Gusts were also reported to 56 mph at Harlingen at 2240CST and to 44 mph at the NWS Office at Brownsville at 2252CST. Damage was generally confined to trees and utility lines, with only spotty damage to roofs indicated.									
Brazoria County	16	0720CST	.3	20	0	0	4	0	Tornado (F0)
A small and short-lived tornado struck the downtown area of Brazoria. It caused minor damage to vehicles, uprooted trees and damaged a number of storage sheds.									
Goliad County	20	2325CST			0	0	0	0	Funnel Cloud
A very strong thunderstorm that developed along an instability line produced by previous storms moved eastward into Goliad County. Radar returns from the storm gave very strong indications of rotation within the storm and a warning was issued. Shortly afterward, winds were reported gusting to 43 mph followed by 1/4-inch hail 5 miles west of Beeville. A funnel cloud was also sighted. It is not known if the funnel touched down.									
San Patricio County	23	1030CST	.5	20	0	0	4	0	Tornado (F1)
A small tornado tossed a large mobile home some 40 feet along the ground and onto the top of three cars and a pickup near Taft. The tornado was accompanied by high winds and heavy rain. The tornado also damaged several storage buildings.									

STORM DATA AND UNUSUAL WEATHER PHENOMENA

MARCH 1983

PLACE	DATE	TIME - LOCAL STANDARD	LENGTH OF PATH (MILES)	WIDTH OF PATH (YARDS)	NO. OF PERSONS		ESTIMATED DAMAGE		CHARACTER OF STORM
					KILLED	INJURED	PROPERTY	CROPS	

PLACE	DATE	TIME - LOCAL STANDARD	LENGTH OF PATH (MILES)	WIDTH OF PATH (YARDS)	NO. OF PERSONS		ESTIMATED DAMAGE		CHARACTER OF STORM
					KILLED	INJURED	PROPERTY	CROPS	

— TEXAS, Southern

Aransas County	23	1118CST				0	0	4	0	Tstm winds
Wind gusts to 60 mph were reported in a strong thunderstorm in Rockport. Winds of 60 to 70 mph were reported about 5 miles to the east on St. Joseph's Island. Only minor damage was indicated.										
Jefferson, Orange Counties	23	1600CST				0	0	4	0	Tstm winds
Thunderstorms forming along a strong cold front that moved across the Jefferson and Orange County areas produced strong winds that caused considerable minor damage. Wind gusts to 55 mph were reported in Beaumont. Numerous trees, and roofs were damaged. Brief heavy rain also accompanied the system.										
Val Verde County	25	2215CST				0	0	5	0	Tstm winds
		2225CST				0	0	0	0	Funnel Cloud
A strong thunderstorm developed in Mexico and moved eastward into the western portions of the city of Del Rio. Wind gusts to 72 mph associated with the storm, along with 3/4 inch hail, was observed at the NWS office at the Del Rio airport. Near the airport, the winds caused nearly \$100,000 damage to a race track and knocked over several light standards. A funnel was spotted shortly afterward.										
Victoria County	26	0400CST	.5	30		0	0	4	0	Tornado (F0)
A small tornado produced near Nursery by a strong thunderstorm struck briefly, damaging the roofs of two barns, and twisting and breaking several large trees. It quickly disappeared.										
Victoria County	26	0600CST				0	0	3	0	Tstm winds
Strong wind gusts from thunderstorms formed in advance of a cold front caused minor damage to vegetation and buildings in Victoria. Wind gusts of 58 mph were recorded at the NWS office in Victoria. Brief heavy rains and 1/4-inch hail accompanied the storm.										
Liberty County	26	0630CST	.3	20		0	0	0	0	Tornado (F0)
A small tornado touched down briefly at Dayton Lakes Estates, about 3 miles east of Dayton. No damage was noted.										
Brazoria, Harris County	26	0630CST	.5	70		0	7	5	0	Tornado (F1)
		0640CST	.3	20		0	0	3	0	Tornado (F0)
A thunderstorm moving eastward in advance of a cold front from Fort Bend County produced a small tornado as it approached Alvin, in Brazoria County. It struck one mobile home and rolled it with two occupants inside. It then struck a second mobile home with five persons inside and rolled it. All persons sustained only minor cuts and bruises. The tornado then lifted and died.										
A second tornado was produced by the same thunderstorm as it moved over Seabrook. It took the roof off several boat sheds, snapped power poles and severed power lines at a marina. The tornado was accompanied by brief heavy rains.										
Hays, Blanco, Comal Counties	30	0730CST				0	0	5	0	Hailstorm
Hail from 3/4 to 1 inch in diameter, accompanied by winds of up to 40 mph damaged the roofs of some 50 homes. The hail path was 10 miles wide and 40 miles long from near Blanco to near San Marcos.										
Caldwell, Bastrop Counties	30	0900CST				0	0	5	5	Hailstorm
Hail varying in size from 1/2 inch to 3/4 inch in diameter was produced in an area from 10 miles northeast of Luling to 10 miles east of Lockhart to 10 miles west of Smithville. The hail covered the ground to a depth of from 2 to 4 inches over much of the area. Roof damage was reported to some 15 homes with minor crop damage.										
Harris County	30	1002CST	.3	40		0	2	4	0	Tornado (F1)
Three persons located in a trailer near Highlands reported a greenish-blue appearance in clouds associated with a very strong thunderstorm as it approached. Strong wind gusts struck the trailer, followed by heavy rains and several minutes of hail. A small tornado struck almost immediately after the hail. Two of the trailer occupants suffered minor cuts as the trailer was badly damaged. The tornado disappeared shortly afterward.										
Brazoria County	30	1115CST				0	0	0	0	Funnel Cloud
		1120CST				0	0	0	0	Funnel Cloud
A brief funnel cloud was spotted over West Columbia. It was preceded by brief heavy rains and gusty winds. It disappeared and a second funnel cloud was sighted just northeast of East Columbia shortly afterward.										

41 TEXAS, Western

Donley County	03	1650 to 1711 and 1759 to 1822CST	5	880	0	0	1	0	0	Tornado (F2)
At 1400CST a thunderstorm developed near the mouth of Palo Duro Canyon along with a flanking line extending south to the town of Matador. By 1600CST the storm showed signs of rotation as cloud striations appeared on the east and north side of the updraft. A wall cloud soon developed and widened rapidly. Pea to marble size hail was encountered just north of the wall cloud. At 1650CST a large cone-shaped tornado touched down approximately 10 miles southwest of Clarendon. The tornado moved north across open rangeland and damage was minimal. By 1707CST the tornado became rope-shaped and began moving northeast finally lifting at 1711CST.										
A second updraft developed just east of the first and grew rapidly. An extensive precipitation area was apparent north of the updraft. Soon a violently rotating wall cloud developed under the updraft. The wall cloud moved north across Rt. 287. Rain curtains could be seen rotating around the updraft. At 1759CST a narrow-column shaped tornado touched down in the Greenbelt Reservoir and moved northeast. A sheath of water could be seen around the base of the tornado. As the tornado moved on shore, it suddenly widened into a large cone-shaped vortex. The tornado continued northeast crossing Rt. 70 just south of the community of Howardwick. Then the tornado continued north and traveled along Rt. 70 just north of the community of Howardwick. Finally, the tornado curved northwest and roped out at 1822CST.										
One man suffered minor injuries at about 1800CST when the second tornado flattened a liquor store attached to Johnson's Oasis, a club on Highway 70, north of Howardwick.										
Gray County	03	1908CST								Funnel
A funnel cloud in extreme southwestern Gray County was reported by the Department of Public Safety.										
Gray County	03	1910CST	0	50		0	0	0	0	Tornado (F0)
Tornado appeared to have touched down briefly in southwest Gray County. No damage noted.										
Gray County	03	2016CST								Funnels
A funnel cloud north of McLean and another near Pampa.										
Wheeler County	03	????								Funnel
A funnel cloud near Shamrock; reported by the public. No time given.										
San Angelo, Tom Green County	13	1634CST				0	0	?	0	Hail
Golfball size hail, along with some snow, covered the ground in Grape Creek; a suburb near San Angelo.										
San Angelo, Tom Green County	25	2042CST				0	0	6	0	Wind
Severe thunderstorms produced a rash of downbursts causing considerable damage to automobiles and houses. Damage estimates ranged from 3 to 5 million dollars.										
Stratford, Sherman County	26	1200CST to 1600CST				0	0	?	0	Wind
Severe weather wind, created by a deep low pressure system over a wide area, damaged trailer homes, knocked down telephone poles and trees, and signs were blown down in Stratford.										
Clarendon, Donley County	26	1200CST to 1600CST				0	0	?	0	Wind
The same low pressure system above hit Clarendon with very high winds breaking windows, uprooting trees, knocking down telephone poles and fences, damaging house roofs and blowing cars off roads.										

STORM DATA AND UNUSUAL WEATHER PHENOMENA

MARCH 1983

PLACE	DATE	TIME - LOCAL STANDARD	LENGTH OF PATH (MILES)	WIDTH OF PATH (YARDS)	NO. OF PERSONS		ESTIMATED DAMAGE		CHARACTER OF STORM
					KILLED	INJURED	PROPERTY	CROPS	
42 UTAH									
Glenn Canyon National Recreation Area, Garfield, San Juan, and Kane Counties	31	1400-1600 NST			3	UNKWN	5	0	High Winds
									Strong winds ahead of a cold front killed one woman when a boat with seven people capsized on Lake Powell. Two other men are missing, but presumed to be dead after winds which were possibly in excess of 100 MPH whipped through the Glenn Canyon National Recreation Area. The damage began at the Hite marina at about 2 PM. Strong winds rolled one Mobile home uphill several times and tore off roofs, collapsed walls, and broke windows of several others. A nearby fishermanslept through the event with no damage to his camper. A TV newsman whose trailer was torn apart, saw no funnel cloud or swirling type winds even though the damage resembled that of a tornado. 16 trailers were damaged or destroyed. The high winds then moved on to Bullfrog marina where a houseboat capsized and sank. At the Wahweap marina on the Utah Arizona border more boats were capsized, including the 18 foot tri-hull boat carrying the woman who drowned. A man and his son are still missing after the storm. Total property damage has been estimated at about 200,000.00 dollars.
43 VERMONT									
AREA WIDE	12				0	4	6		Heavy Snow
									Heavy snow fell in Vermont early Saturday morning. Hardest hit areas were near Bristol Vermont in Addison County, where up to 15 inches of snow fell. Several auto accidents were blamed on slippery snow covered roads. Some scattered phone and power outages were reported. In many of the higher elevations there was some mixing with ice.
CHITTENDEN CO.	21				1	1	4		Rain-freezing rain and sleet
									Slick roads resulted in a one car accident that took one life. Police reported accident was caused by icy roads. Elsewhere in Vermont light snow fell to the North and light rain fell to the South. No other problems were reported
44 VIRGINIA									
Emporia and Greensville County	7	All Day			0	0	0	0	Rain
									Locally heavy rain caused some small stream flooding with portions of roads under water for a time. No damage was reported.
Statewide	17-19				0	0	4	0	Rain, Wind
									A fairly intense low pressure disturbance moved north-northeastward from the eastern Gulf of Mexico. Scattered stream flooding occurred over the state as up to 3 inches of rain fell during the period from late on the 17th to early on the 19th. At Salem the Roanoke River rose above flood stage, causing the closing of one bridge. Elsewhere, in Roanoke County many basements were flooded and several families had to be evacuated when a dam threatened to spill over. In the Tidewater area, strong northeast winds caused some minor damage and some street flooding was reported in Newport News and Hampton, as well as low-lying sections in the Norfolk area.
Southeastern	21	Morning			1	0	4	0	Rain
									Thunderstorms and heavy showers brought locally heavy rainfall on top of already saturated ground. Three autos were driven into an 8-foot deep pool of water over a road in Richmond, at shortly after 5AM. The drivers of the latter two cars were rescued...however the first car, which was completely inundated, was not discovered until salvaging had begun on the latter two. The driver of it had been trapped inside. Elsewhere, in Mecklenburg County, stream overflow washed out a bridge just north of South Hill.
Tidewater Area	24-25				0	0	3	0	Snow, Wind, Rain
									Another in a series of coastal low pressure systems dumped 3 to 5 inches of wet snow upon the cities of Chesapeake and Virginia Beach. In the immediate coastal sections, some minor flooding occurred, along with tree damage as winds gusted to 55 mph.
45 WASHINGTON ————— NONE REPORTED									
46 WEST VIRGINIA									
Western Counties	06	1600-1900EST			0	0	3	0	Hail
									Heavy thunderstorms rumbled over several western counties bringing strong winds and hail. Some of the largest hail reports include...3/4 inch hail at Hamlin, Lincoln county at 4:15 P.M. EST, 1 inch hail at Cross Lanes, Kanawha county at 5:15 P.M., at Pocatalico at 5:45 P.M., and at Hurricane, Putnam county at 6:00 P.M.
Cabell County	07	2030EST			0	0	0	0	Hail
									11/4 inch hail fell 10 miles east of Huntington.
Western Counties	27	1600-1900EST			0	0	3	0	Thunderstorm Winds
									A north-south line of heavy thunderstorms moved east across western parts of the state. There were numerous reports of strong gusty winds and small hail. Several trees and power lines downed. Shortly after 6 P.M. strong winds tore the roof off a house near Beech in Calhoun county.
47 WISCONSIN									
Baldwin St. Croix County	03	0200CST					5		Electrical
									Lightning struck the telephone company building in Baldwin, burning out switching equipment and knocking out service for up to three days.
Town of Preston, Trempealeau County	04	0215CST					4		Electrical
									Lightning caused a fire that destroyed a barn and all livestock inside.
Town of Arcadia, Trempealeau County	04	0230CST					3		Electrical
									Lightning started a fire that destroyed a shed and equipment.
Menomonie, Dunn County	04	0301CST					4		Electrical
									Lightning struck a home that resulted in a fire that damaged the structure.
Shiocton, Outagamie County	04	0605CST					4		Electrical
									Lightning struck a home burning out appliances and communications equipment. A portion of an outside wall was also buckled and scorched.
Town of Sampson, Chippewa County	06	Unknown					3		Electrical
									Lightning struck a house, burning it to the ground.
Janesville, Rock County	06	1622CST					?		Wind
									Wind gusts reported to 55 MPH.
Wind Lake, Racine County	06	1720CST					2		Wind
									Estimated wind gusts to 50 MPH and minor tree damage.
Watertown, Dodge County	06	1730CST					?		Wind, Hail
									Estimated wind gusts 50-55 MPH with pea size hail.
West Central, Central and South-west Counties	07-13						?		Flooding
									An early warm spell led to a premature snowmelt which caused flood and near-flood conditions along the major tributaries of the Wisconsin, Black, Kickapoo, Chippewa, Trempealeau, and LaCrosse Rivers. Flooding also occurred along the Mississippi River.
West Central Counties	15-16	Late Evening into Next Day					?		Snowstorm
									A late-winter snowstorm left heavy snow accumulations in the west central portion of the state. 8-12 inches of snow were reported in Dunn, Pierce and St. Croix counties. The snow contributed to numerous auto and truck accidents.
Southeast Counties	20-21	Evening into the Next Day					?		Snowstorm, Wind
									Schools, offices and businesses were closed as heavy snow and winds gusting over 40 MPH piled snow into drifts up to 8 ft high. Heaviest snow accumulations of 6-10 inches occurred near Lake Michigan in Ozaukee, Milwaukee, Racine and Kenosha counties. The snow contributed to hundreds of auto and truck accidents.

STORM DATA AND UNUSUAL WEATHER PHENOMENA

MARCH 1983

PLACE	DATE	TIME - LOCAL STANDARD	LENGTH OF PATH (MILES)	WIDTH OF PATH (YARDS)	NO. OF PERSONS		ESTIMATED ¹ DAMAGE		CHARACTER OF STORM	PLACE	DATE	TIME - LOCAL STANDARD	LENGTH OF PATH (MILES)	WIDTH OF PATH (YARDS)	NO. OF PERSONS		ESTIMATED ¹ DAMAGE		CHARACTER OF STORM
					KILLED	INJURED	PROPERTY	CROPS							KILLED	INJURED	PROPERTY	CROPS	
WISCONSIN																			
Grant and Lafayette Counties	26- 27	Evening into the Next Morning							?	Snowstorm									
			6-8 inches of snow fell across extreme southern Grant and Lafayette counties.																
48 WYOMING																			
East and South Counties: Crook, Campbell, Weston, Natrona, Converse, Niobrara, Albany, Platte, Goshen, Laramie, Sweetwater, Lincoln, and Uinta	05 06	Day Day			0	0	3	0		Winter Storm									
			A major winter storm deposited a blanket of snow varying from 4 to 16 inches over east and south Wyoming stranding over 250 travelers in Laramie alone. All roads in and out of Cheyenne and Laramie were closed with additional closures between Rawlins and Evanston. Winds averaging 25 mph and gusting to near 40 mph in many areas caused ground blizzards.																
Southern Wyoming Counties: Uinta, Sweetwater, Carbon, Albany, Natrona, Converse, Niobrara, Platte, Goshen, and Laramie	25 26	Day Day			0	0	3	0		Winter Storm									
			Several hundred miles of state and Federal highways were closed as a strong spring snowstorm moved east. Snow, with accumulations up to 8 inches in the southeast, was blown about by 20 to 30 mph winds causing ground blizzard conditions.																
49 ALASKA, Northern																			
Eastern Arctic Coast	2-3	1300 - 0700AST			0	0	?	0		Blizzard									
			High winds from the northwest and blizzard conditions in blowing snow struck the eastern Arctic coast of Alaska. Blizzard conditions were most prevalent at Barter Island, and occurred briefly at Prudhoe Bay on the afternoon of March 2. Peak wind was approximately 50 miles an hour at Barter Island. Chill factors were as low as 70 below.																
49 ALASKA, Southern ——— NONE REPORTED																			
49 ALASKA, Southeastern ——— NONE REPORTED																			
50 HAWAII																			
Oahu	07	Noon			0	0	0	0		Waterspout									
			Waterspout reported by public off Kaena Point.																
Molokai	10	1215HST			0	0	0	0		Waterspout									
			Waterspout reported by pilot off Molokai.																
Maui	10	1215HST			0	0	3	0		Dust Devil									
			Powerful dust devil during gusty southwest winds in Kahului area lifts off house.																
Hawaii	16- 17				0	0	4	0		High Surf									
			High surf from northerly directions causes road damage and minor damage to several structures in area mainly to the southeast of Hilo.																
51 PUERTO RICO ——— NONE REPORTED																			
52 VIRGIN ISLANDS ——— NONE REPORTED																			
53 PACIFIC ——— NONE REPORTED																			

STORM SUMMARY

MARCH 1983

STATE	TORNADOES					HAILSTORMS				WINDSTORMS				LIGHTNING				FLOODING				HEAVY SNOWSTORMS AND BLIZZARDS				ICE STORMS				ALL OTHER			
	NUMBER	DAYS	DEATHS	INJURIES	DAMAGE	DEATHS	INJURIES	DAMAGE		DEATHS	INJURIES	DAMAGE		DEATHS	INJURIES	DAMAGE		DEATHS	INJURIES	DAMAGE		DEATHS	INJURIES	DAMAGE		DEATHS	INJURIES	DAMAGE					
								PROP. ERTY	CROPS			PROP. ERTY	CROPS			PROP. ERTY	CROPS			PROP. ERTY	CROPS			PROP. ERTY	CROPS			PROP. ERTY	CROPS				
Alabama	2	2			5					5						6																	
Arizona																																	
Arkansas	4	2			5		4	3		6	4		4			3																	
California	3	3		30	7					?	?		?	?	2	?	?									2	6						
Colorado										4								6															
Connecticut																5								5									
Delaware																																	
Florida	9	5		8	7		1	5	?		5	?				4	?																
Georgia										3						5					?												
Idaho										5																							
Illinois	1	1			5						5																						
Indiana										4			2																				
Iowa																																	
Kansas	2	2		4	6			4			3																						
Kentucky	1	1			3						4																						
Louisiana	#																																
Maine													5		1	6								6									
Maryland & DC											3													5									
Massachusetts																																	
Michigan	2	1			4						2					7																	
Minnesota																																	
Mississippi	1	1			6						5					4								3									
Missouri	2	1			4						4																						
Montana																																	
Nebraska												?													5								
Nevada																																	
New Hampshire																																	
New Jersey													3			5	?	?															
New Mexico																																	
New York											?	?			?	8	?	?	?	?	6		1	15	6		1	6	4				
North Carolina	7	4		9	6		4	?			5	?	1	19	?	?																	
North Dakota																																	
Ohio											4			3	3																		
Oklahoma	4	2		1	5		2	?			5	?				?	?																
Oregon	#																																
Pennsylvania	1	1			4																												
Rhode Island																																	
South Carolina	2	1			3						3				3																		
South Dakota																6	6				3	2											
Tennessee																																	
Texas	#																																
Utah													3	?	5																		
Vermont																																	
Virginia																																	
Washington															1	5					4	6		1	1	4							
West Virginia																																	
Wisconsin											3																						
Wyoming																																	
Alaska																																	
Hawaii																																	
Pacific																																	
Puerto Rico																																	
Virgin Islands																																	

REFERENCE NOTES

Storm damage categories are from 1 to 9 as follows:

- 1 Less than \$50
- 2 \$50 to \$500
- 3 \$500 to \$5,000
- 4 \$5,000 to \$50,000
- 5 \$50,000 to \$500,000
- 6 \$500,000 to \$5 Million
- 7 \$5 Million to \$50 Million
- 8 \$50 Million to \$500 Million
- 9 \$500 Million to \$5 Billion

- * Miles instead of yards
- ** Yards instead of miles
- @ Includes heavy sleet storm
- # Freezing drizzle and freezing rain, commonly known as glaze
- ≠ Not received or incomplete
- o/c Under Estimated Damage, Property/Crops, indicates crop damage amount is included in the figure given

Definition of Fujita Tornado Scale (F scale)

(F0) Gale tornado (40-72 mph): Light damage
Some damage to chimneys; break branches off trees; push over shallow-rooted trees; damage sign boards.

(F1) Moderate tornado (73-112 mph): Moderate damage
The lower limit (73 mph) is the beginning of hurricane wind speed; peel surface off roofs; mobile homes pushed off foundations or overturned; moving autos pushed off the roads.

(F2) Significant tornado (113-157 mph): Considerable damage
Roofs torn off frame houses; mobile homes demolished; boxcars pushed over; large trees snapped or uprooted; light-object missiles generated.

(F3) Severe tornado (158-206 mph): Severe damage
Roofs and some walls torn off well-constructed houses; trains overturned; most trees in forest uprooted; heavy cars lifted off ground and thrown.

(F4) Devastating tornado (207-260 mph): Devastating damage
Well-constructed houses leveled; structure with weak foundation blown off some distance; cars thrown and large missiles generated.

(F5) Incredible tornado (261-318 mph): Incredible damage
Strong frame houses lifted off foundations and carried considerable distance to disintegrate; automobile-sized missiles fly through the air in excess of 100 m; trees debarked; incredible phenomena will occur.

(F6-F12) (319 mph to Mach 1, the speed of sound):
The maximum wind speeds of tornadoes are not expected to reach the F6 wind speeds.

-
- (F0+F1) Weak Tornado
 - (F2+F3) Strong Tornado
 - (F4+F5) Violent Tornado
-



From J. Atmos. Sci., August 1981, p. 1517-1519

USCOMM-NOAA-ASHEVILLE, NC 1983-3050

DEPARTMENT OF COMMERCE
NATIONAL OCEANIC AND ATMOSPHERIC ADMINISTRATION
NATIONAL ENVIRONMENTAL SATELLITE, DATA, AND INFORMATION SERVICE
NATIONAL CLIMATIC DATA CENTER
FEDERAL BUILDING
ASHEVILLE, N.C. 28801

POSTAGE AND FEES PAID
U.S. DEPARTMENT OF COMMERCE



COM 210
THIRD CLASS
BULK RATE