

FEBRUARY 1983

VOLUME 25

NUMBER 2

STORM DATA



"I CERTIFY THAT THIS IS AN OFFICIAL PUBLICATION OF THE NATIONAL OCEANIC AND ATMOSPHERIC ADMINISTRATION AND IS COMPILED FROM INFORMATION RECEIVED AT THE NATIONAL CLIMATIC DATA CENTER, ASHEVILLE, N.C. 28801"

L. Ray Hoyt

ACTING DIRECTOR

NATIONAL CLIMATIC DATA CENTER

This publication is funded by the
National Oceanic and Atmospheric Administration and the Federal Emergency Management Agency

noaa

NATIONAL OCEANIC AND
ATMOSPHERIC ADMINISTRATION

/ NATIONAL ENVIRONMENTAL SATELLITE,
DATA, AND INFORMATION SERVICE

/ NATIONAL CLIMATIC DATA CENTER
ASHEVILLE, N.C.

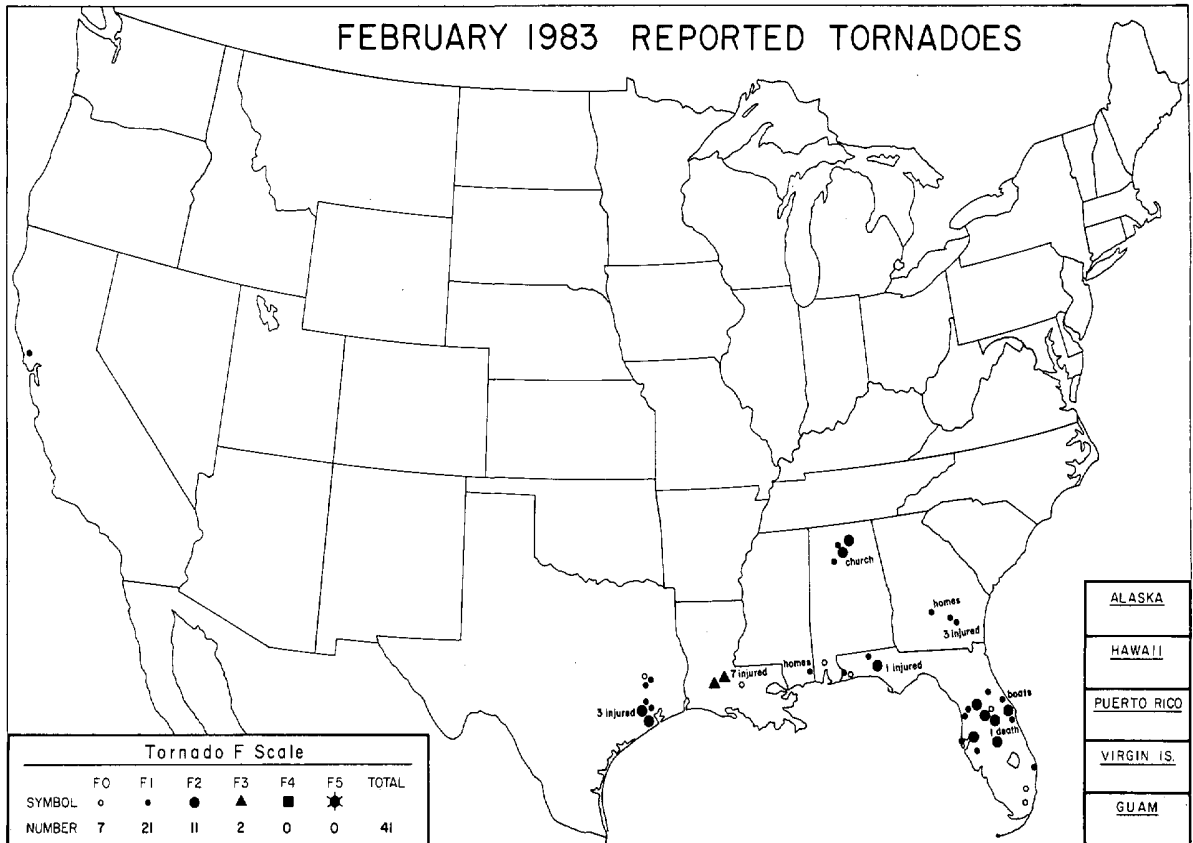
C O N T E N T S

	<u>Page</u>
Outstanding Storms of the Month.....	3
Storm Data and Unusual Weather Phenomena.....	14
Storm Summary.....	25
Reference Notes.....	26
"F" Scale Definitions.....	26

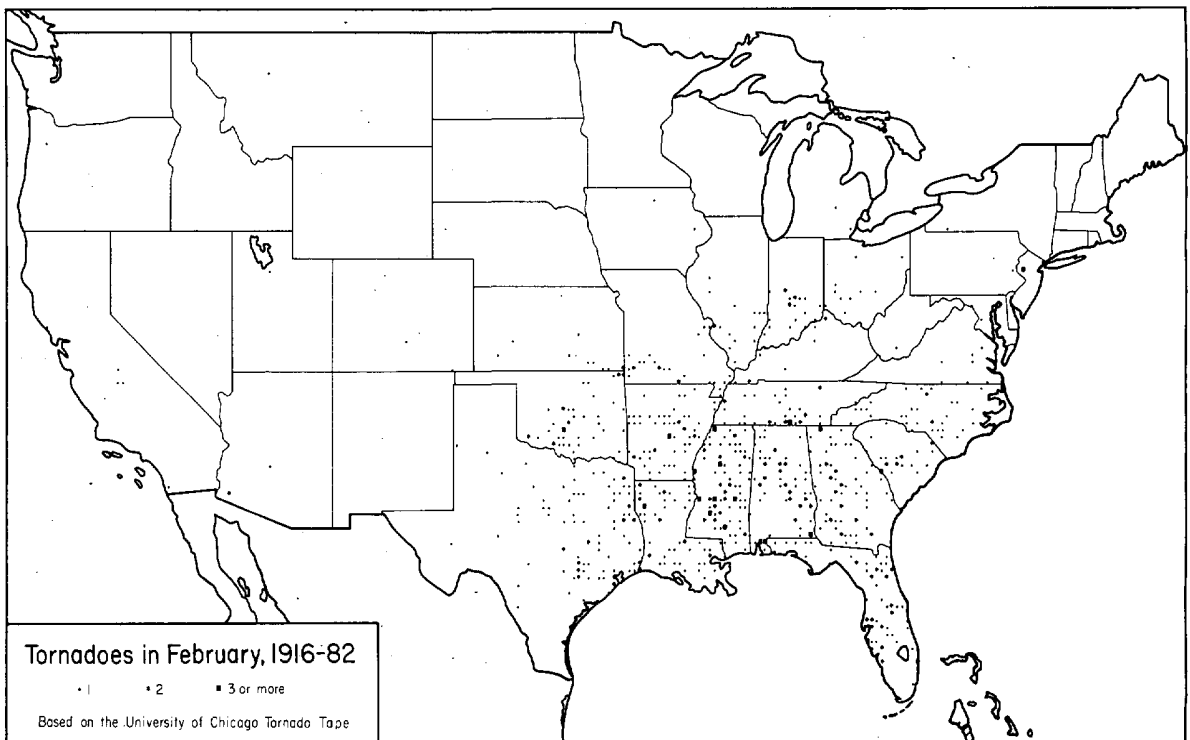
NOTE: The section on Outstanding Storms of the Month is prepared and edited by Professor T. Theodore Fujita, University of Chicago. The narrative descriptions of Storms by State and Summaries of Hurricanes and Tropical Storms are prepared by the National Weather Service. The National Climatic Data Center compiles the statistics on deaths, injuries, and damage. This publication contains our best information on storms, but, due to the difficulties inherent in collection of this type of data, it is not all-inclusive. Late Reports and Corrections will be carried quarterly.

STORM DATA - (ISSN 0039-1972) is published monthly. Subscription, pricing, and ordering information is available from: Publications Section (E/CC413), The National Climatic Data Center, National Environmental Satellite, Data, and Information Service, NOAA, Federal Building, Asheville, NC 28801-2696.

OUTSTANDING STORMS OF THE MONTH



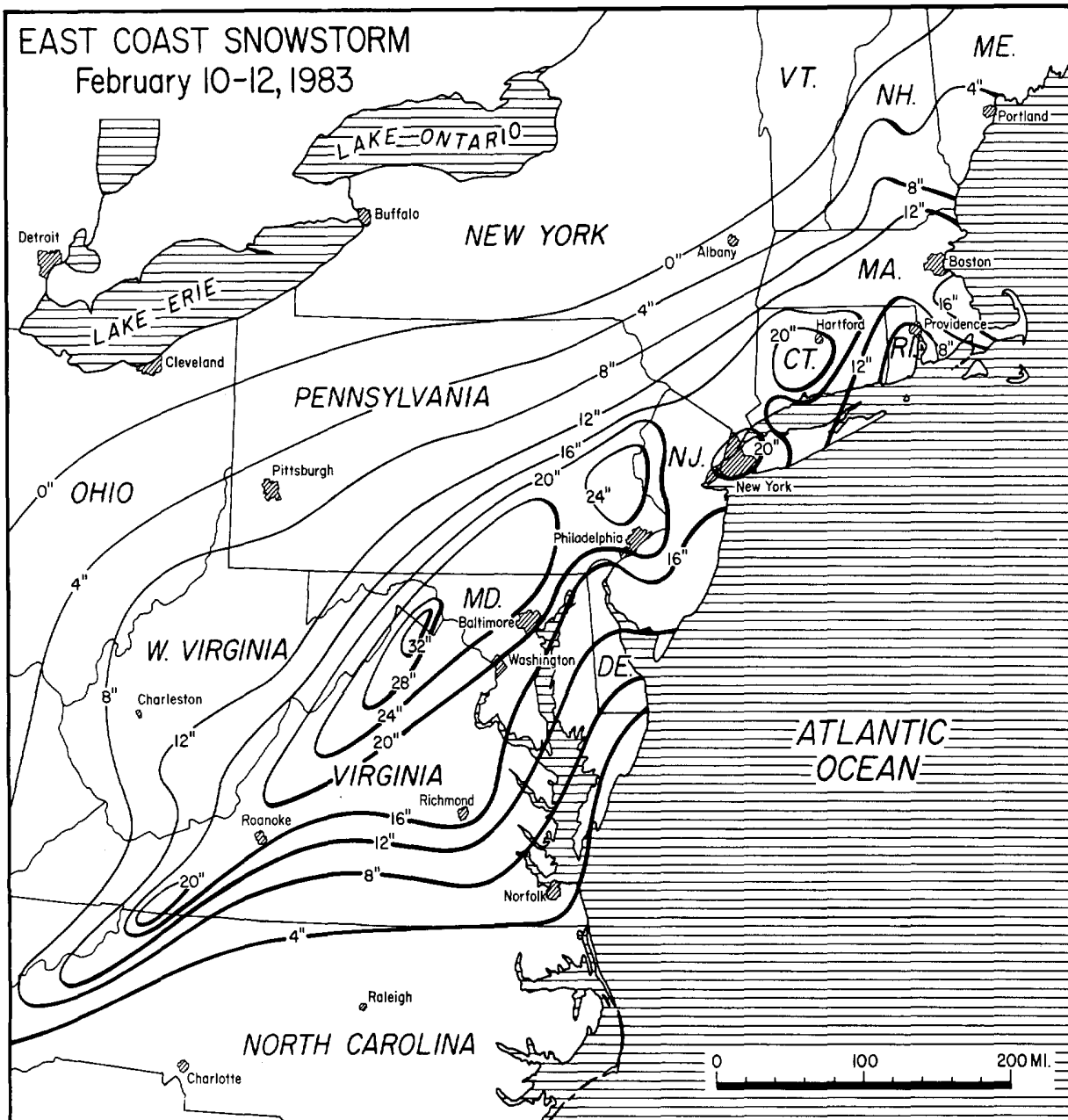
● COMPLETE REPORT RECEIVED	● 1AL	● 7DE	● 14KS	● 21MN	● 28NJ	● 33OH	● 39SD	● 44VA	● 49AK(SE)
○ PRELIMINARY REPORT RECEIVED	● 2AZ	● 8FL	● 15KY	● 22MS	● 29NM	● 34OK	● 40TN	● 45WA	● 50HI
○ REPORT NOT RECEIVED	● 3AR	● 9GA	● 16LA	● 23MO	● 30NY(O)	○ 35OR	○ 41TX(N)	● 46WV	● 51PR
(N) northern (W) western	● 4CA(N)	● 10ID	● 17ME	● 24MT	● 30NY(C)	● 36PA(E)	● 41TX(S)	● 47WI	● 52VI
(S) southern (C) central	● 4CA(S)	● 11IL	● 18MD	● 25NE	● 30NY(W)	● 36PA(W)	● 41TX(W)	● 48WY	● 53PC
(E) eastern (O) coastal	● 5CO	● 12IN	● 19MA	● 26NV	● 31NC	● 37RI	● 42UT	● 49AK(N)	
(SE) southeastern	● 6CT	● 13IA	● 20MI	● 27NH	● 32ND	● 38SC	● 43VT	● 49AK(S)	



1. EAST COAST SNOWSTORM on February 10-12, 1983

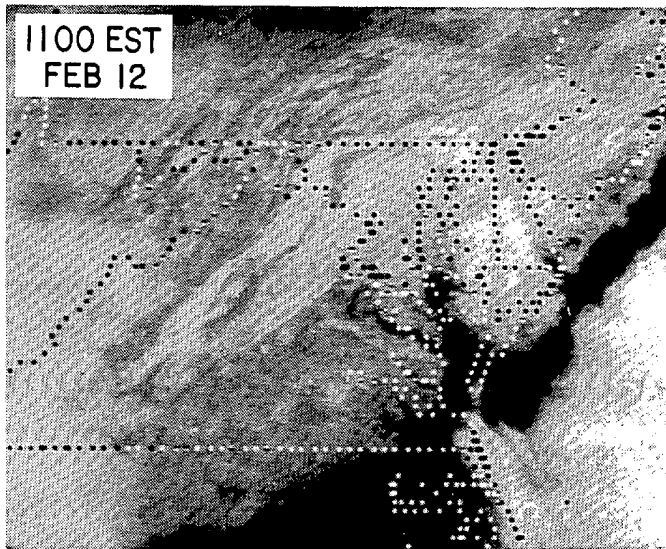
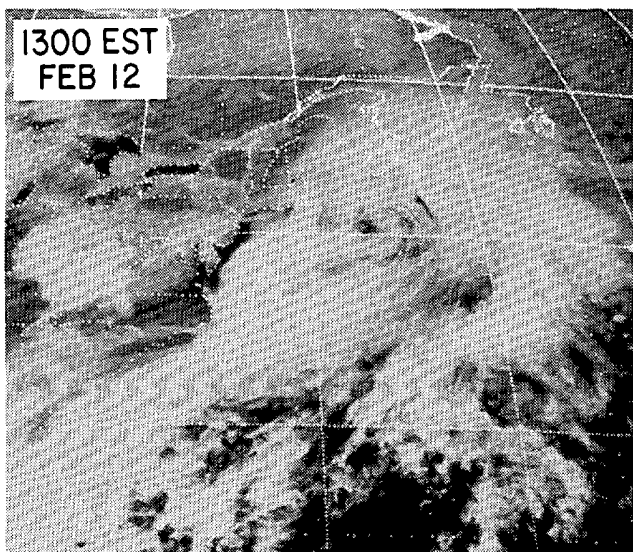
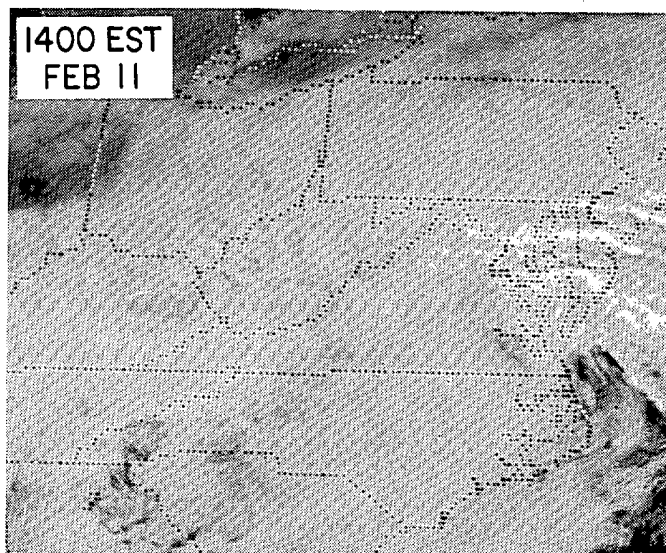
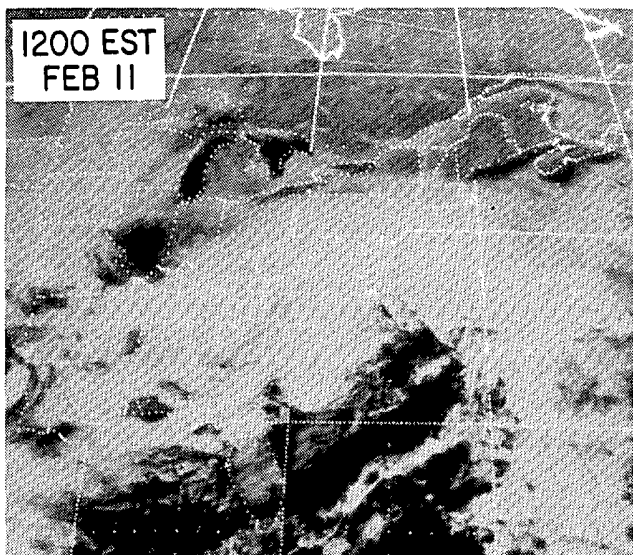
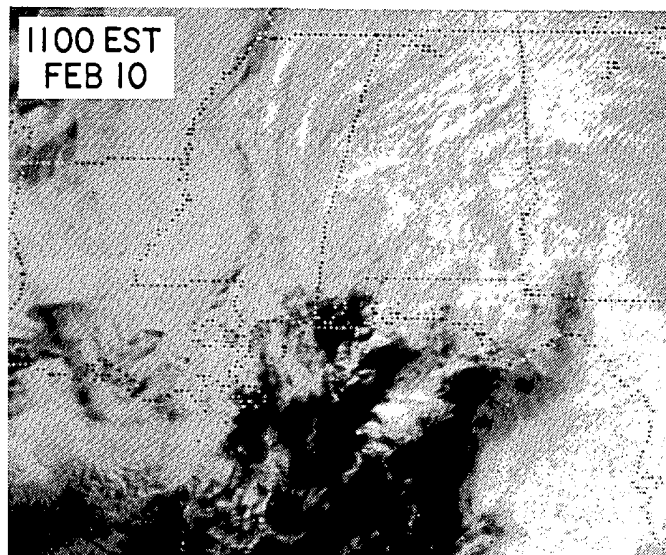
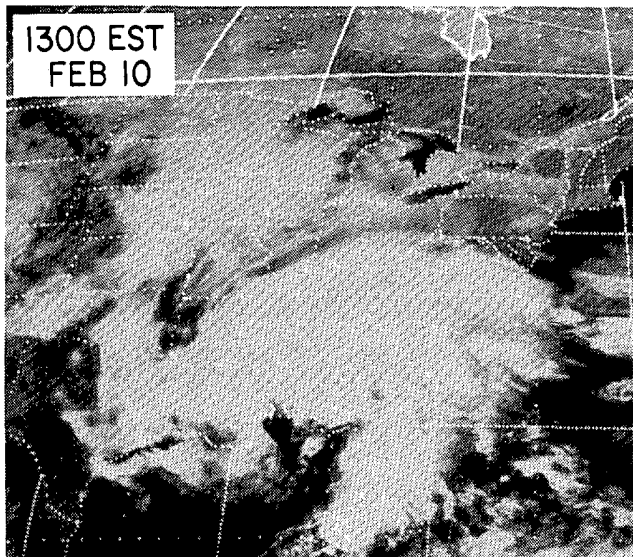
An intense low pressure system which organized in the gulf states and moved northeastward up the eastern U.S. coast, dumped record amounts of snow and created blizzard conditions over much of the northeastern U.S. on February 10th to the 12th. The storm paralyzed many major eastern cities with snow amounting to 22.8" at Washington and Baltimore, 22" at New York, 21.3" at Philadelphia, 18" at Roanoke, and 13" at Boston. The Blue Ridge area of the Appalachian Mountains had some of the highest amounts as evidenced by Glen Gary, West Virginia which received 35 inches.

There were 46 storm-related deaths, 33 of which occurred when a freighter capsized in strong winds and sank in the Atlantic off Chincoteague, Virginia near the Maryland-Virginia border. Most of the remaining deaths were attributed to weather-related traffic accidents and heart attacks brought on from shoveling the heavy, wet snow.



Map showing the distribution of snowfall from the storm. Some very localized areas received higher amounts than shown due to convective activity.
---Data supplied by NWSFOs at Washington, DC; Boston, MA; Portland, ME; New York, NY; Morrisville, NC; Philadelphia, PA; and Charleston, WV.

EAST COAST SNOWSTORM ----Continued



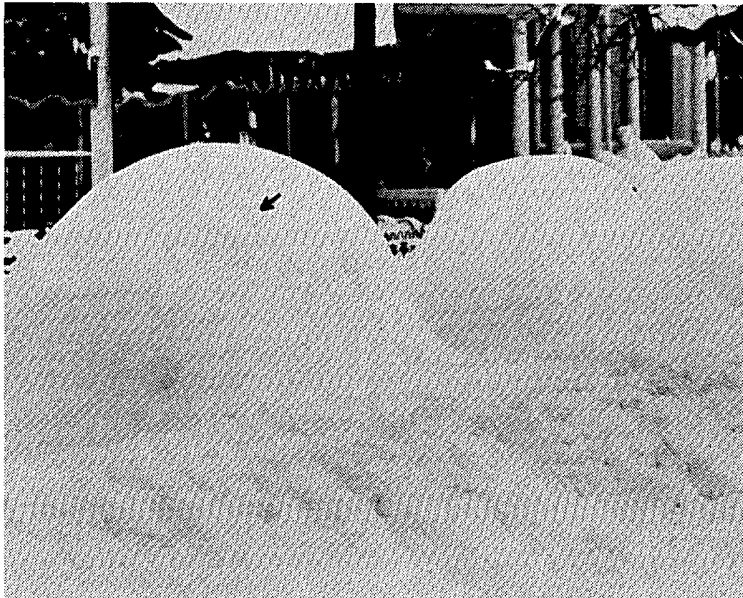
The three satellite pictures above left show the cloud pattern and position of the storm at or near midday for each of the days as the storm moved up the coast. Of the enlarged pictures above right, the top two show the detail of the cloud structure and the position of the storm center, while the bottom photo shows the snow over the Appalachian Mountains after the storm. Unfortunately, the grid of the bottom right photo is greatly displaced to the north. ---Photos from NESDIS.



Snowbound vehicles clog New York City's Northern Boulevard near the Cross Island Expressway. ---Photo by Dan Farrel, New York Daily News; supplied by NWSFO New York, New York.



A narrow street in Lebanon, Pennsylvania that poses a major problem to cleanup: "Where to put the snow". ---Photo by Jim Zengerle, Lebanon Daily News.

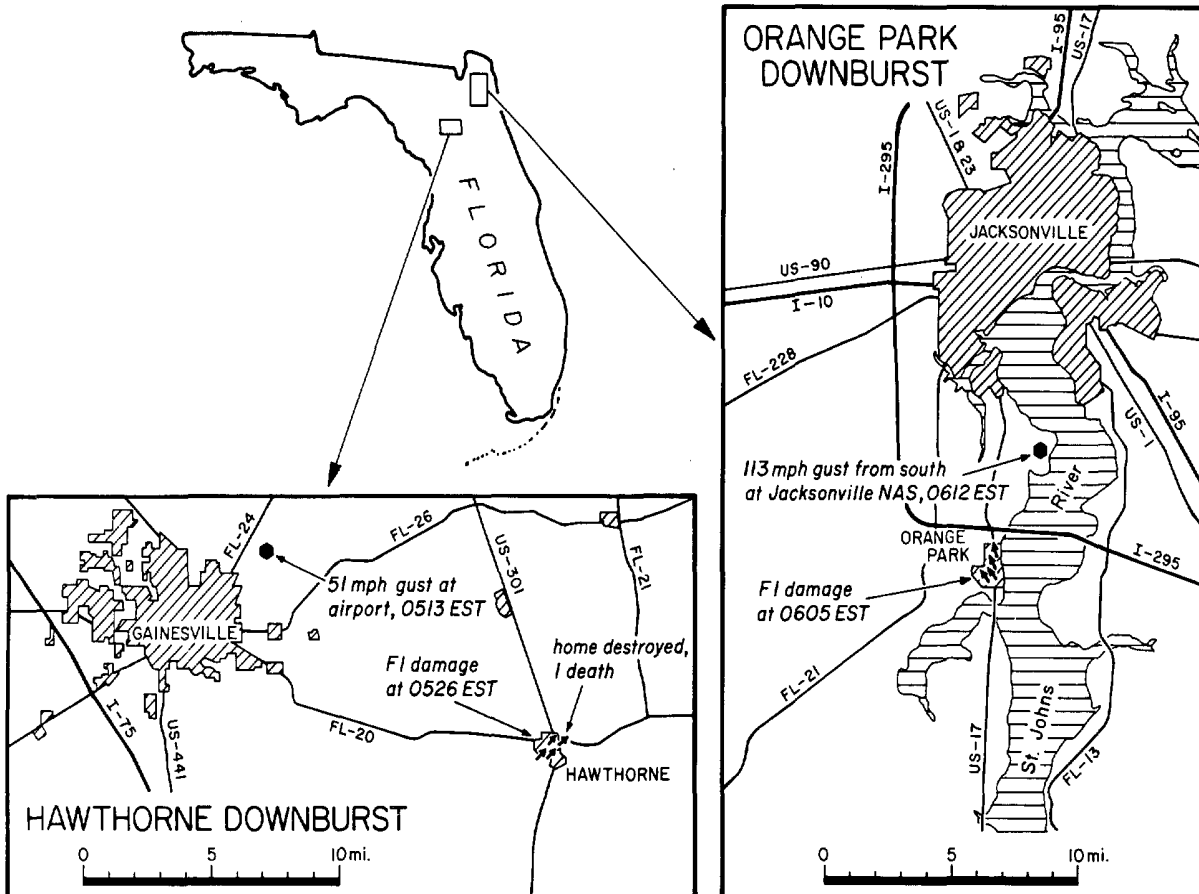


Both pictures above are of snowburied cars in Lancaster, Pennsylvania which received 24 inches of snow. At left, only the protruding antenna reveals that autos lie under the white mounds. At right, a Lancaster resident digs out her car, although there was no place to go as streets remained impassable for days. ---Both photos by Marty Heisey, Lancaster New Era.

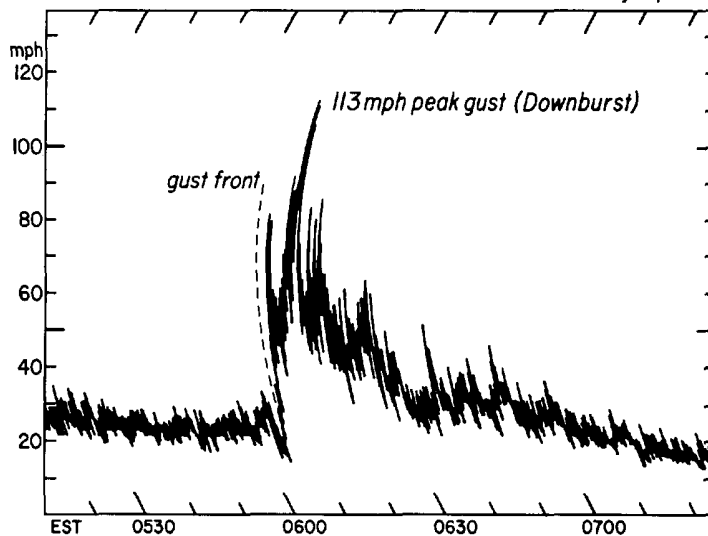
2. DOWNBURSTS in FLORIDA on February 2, 1983

On the morning of February 2nd, two areas of northeastern Florida experienced damage from downburst winds. Fl wind damage (mapped below) occurred at Hawthorne and Orange Park, near Gainesville and Jacksonville respectively. The same thunderstorm produced both areas of damage as it moved northeastward from just southwest of Hawthorne to the Atlantic Ocean near the Florida-Georgia border.

The downburst path at Hawthorne was about 6,500 Ft. long by 1,200 Ft. wide and all of the trees fell in a northeasterly direction. At Orange Park the downburst path was 6,000 ft. long by 1,500 ft. wide and all of the trees fell toward the north-northwest.

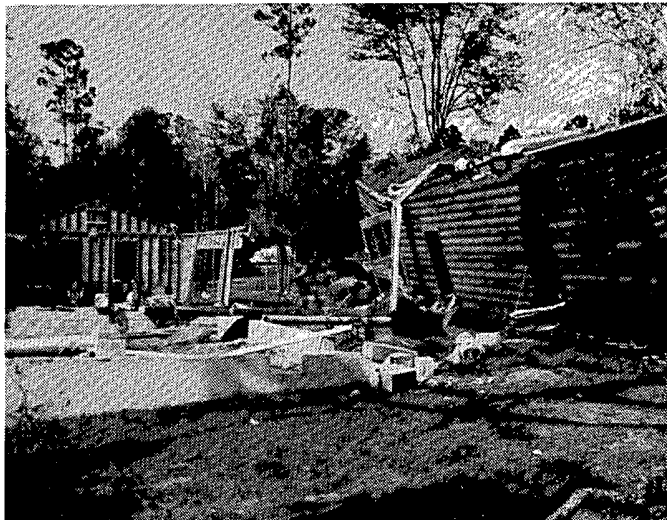


Gust Recorder Trace at Jacksonville NAS February 2, 1983

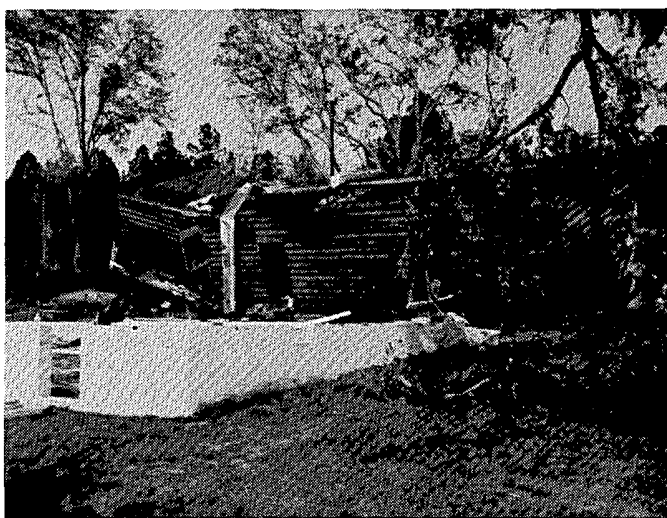


A wind trace from the Jacksonville Naval Air Station, 5 miles north-northeast of Orange Park. A downburst associated gust of 113 mph from 170° occurred only 7 minutes after the damage at Orange Park.

DOWNBURSTS in FLORIDA ----Continued



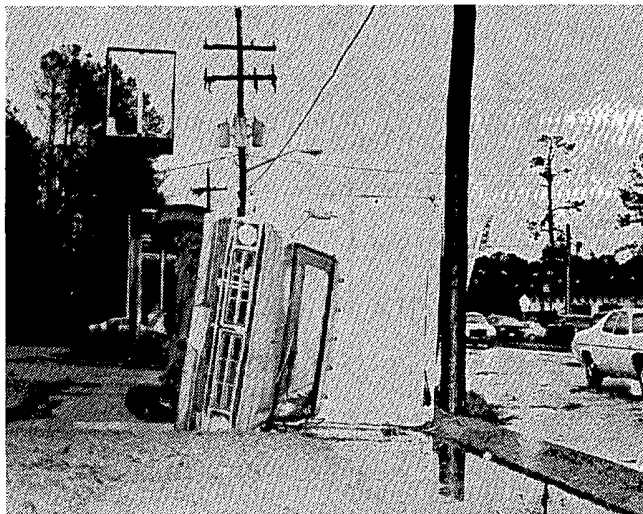
The pictures above and at right are of a prefabricated home east of Hawthorne where one person was killed when the home collapsed on top of him. No other deaths occurred in Hawthorne, though there were 6 injured. Some downburst winds also occurred to the north and west of Hawthorne in the Gainesville area. A 51 mph gust was recorded at the Gainesville airport.



The pictures below are of damage at Orange Park. A total of 75 homes were damaged along with many autos and businesses. Numerous trees were either broken off or uprooted.



Debris caught by a tree.



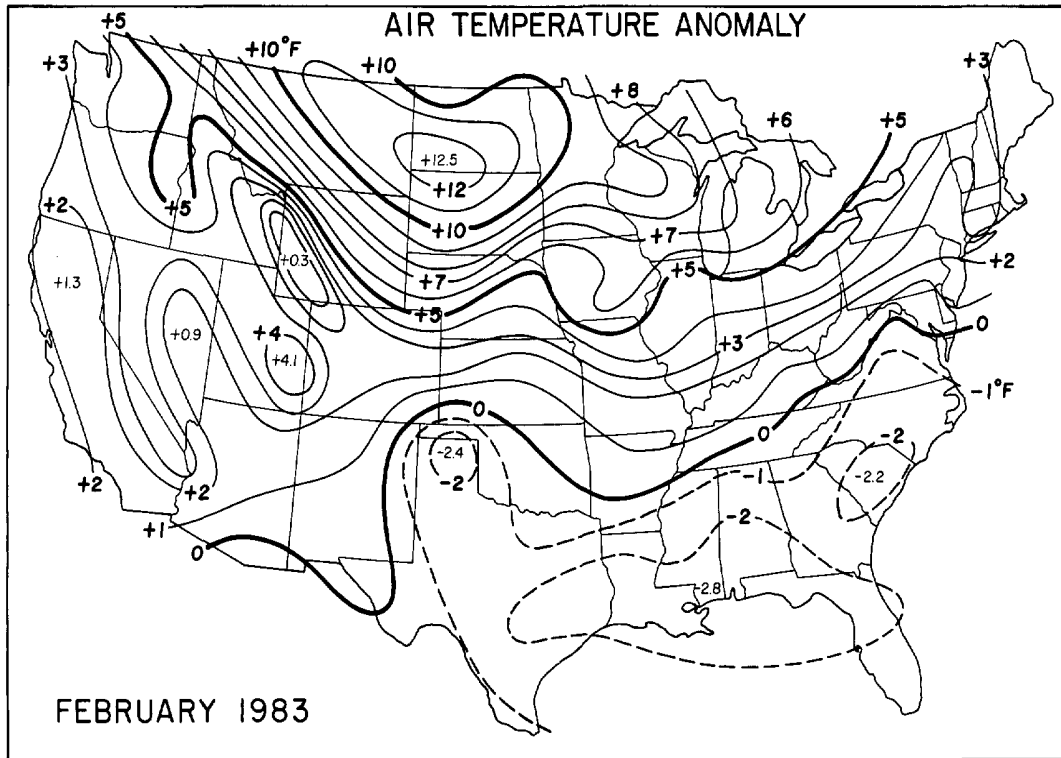
Blown out sign and overturned truck.

---Maps, wind trace and photos supplied by Jack Schnabel, NWSO Jacksonville, Florida.

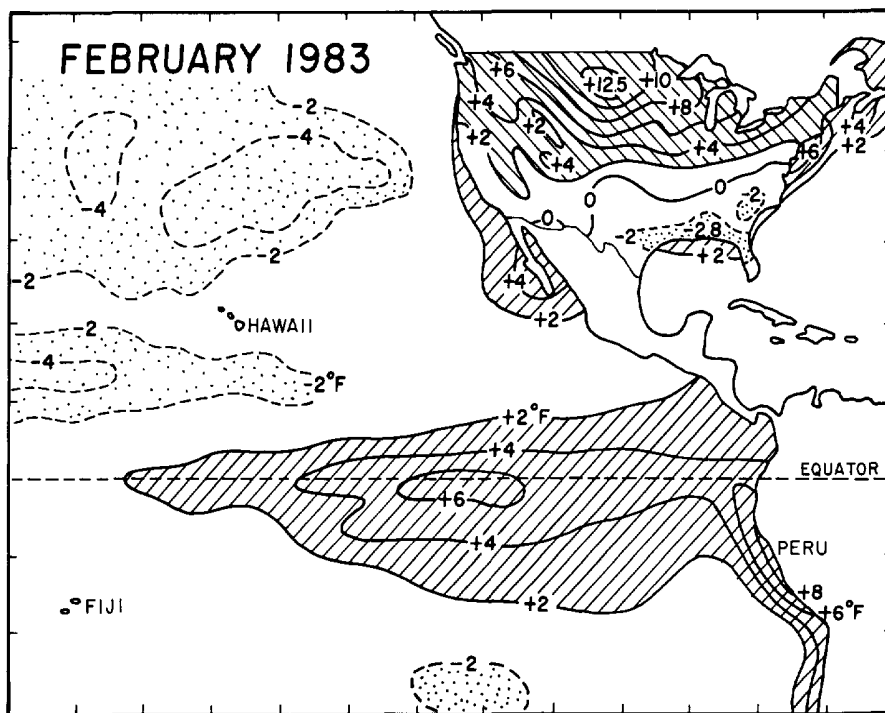
3. AIR and SEA-SURFACE TEMPERATURE ANOMALIES for February, 1983

The unusually warm temperatures over the northern plains during December and January continued through February with a maximum anomaly of +12.5°F in North Dakota (upper map). As in January, the gulf region was below normal in temperature.

The warm sea-surface temperature of the El Niño continued in the equatorial Pacific (lower map).



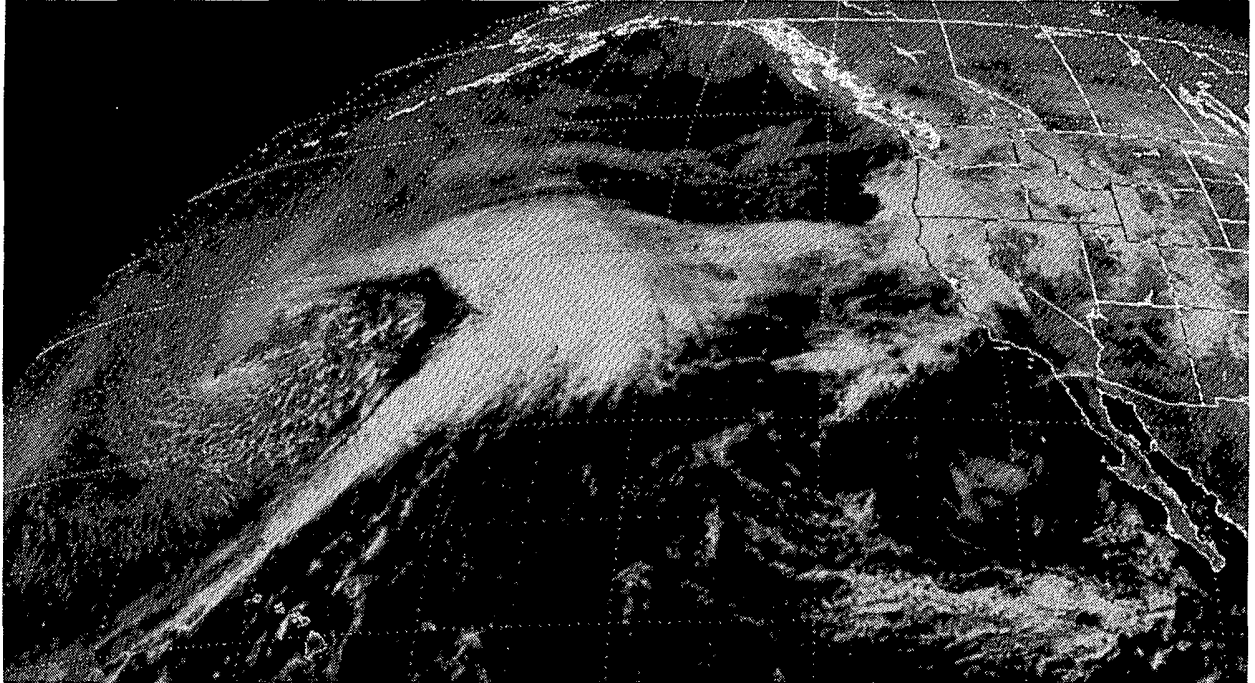
Air temperature for February, 1983 contoured at intervals of 1°F. Anomaly values at 344 locations were used in the analysis. ---Data supplied by National Climatic Data Center; analysis by T.T. Fujita, University of Chicago.



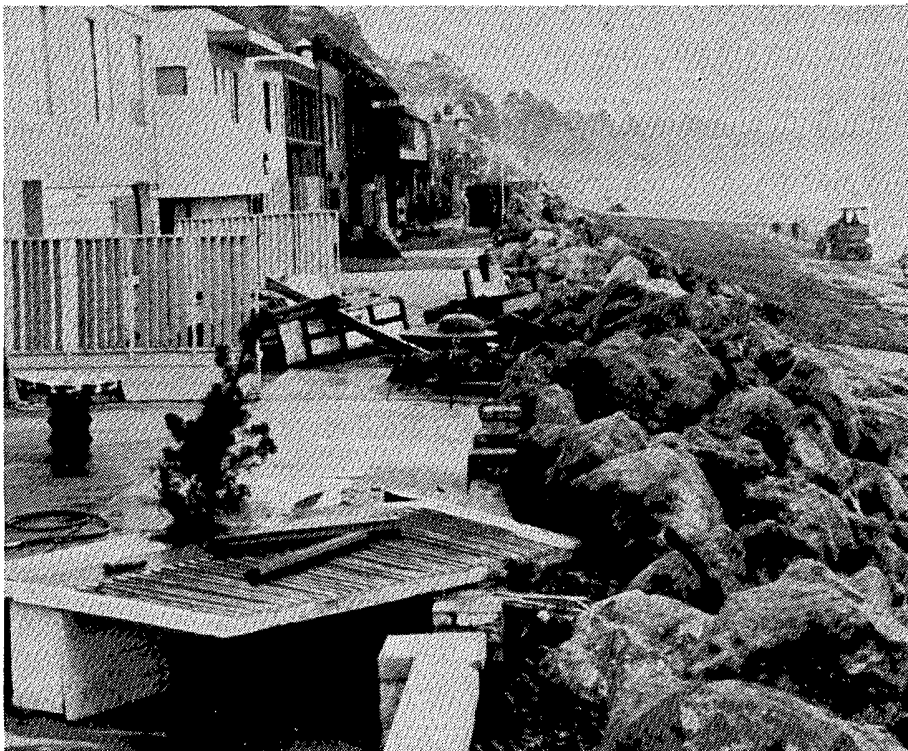
Anomaly of sea-surface and air temperature contoured at intervals of 2°F. Areas of +2°F or greater are hatched and those of -2°F or less are stippled. The air temperature anomaly is reduced from the top map. ---Sea-surface analysis from NESDIS using satellite data only.

4. PACIFIC STORMS striking the CALIFORNIA COAST during February, 1983

As in January, an unusually large number of cyclones formed in the north Pacific during February and lashed the northern California coast with frequent high winds and heavy rain. The persistent storms, besides producing their own beach erosion and property damage, hampered the cleanup efforts of past damage from the stronger storms of late January. Many coastal buildings in Santa Cruz County which were being repaired were again damaged by high waves pushed ashore by 14 to 18 ft. swells from a storm on February 10th.



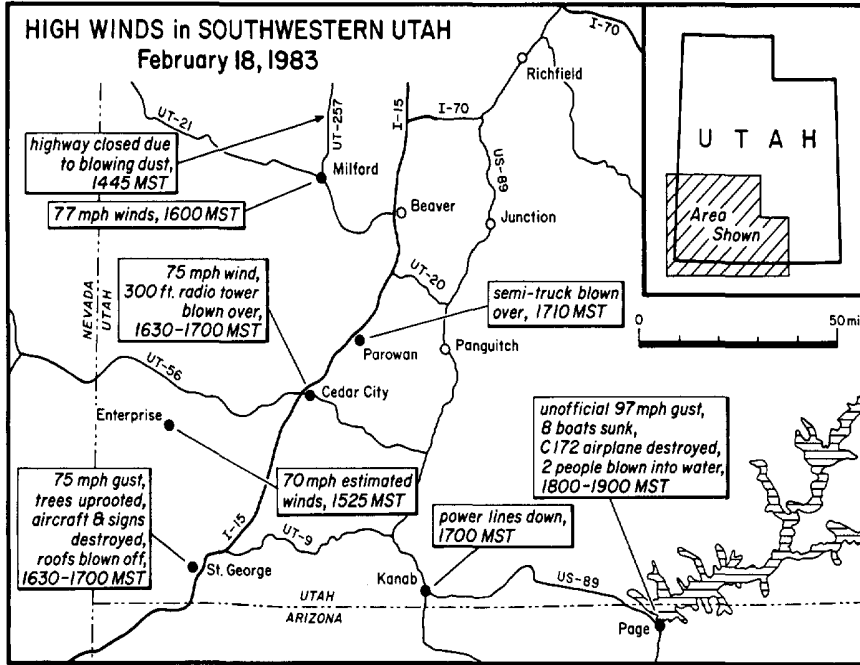
The satellite picture above, taken at 2045 GMT (1245 PST) on February 9th, shows the cloud pattern of one storm breaking up over California as another large storm at sea readies to strike the coast on the following day. ---Photo from NESDIS.



Large rocks piled along the beach at Aptos in Santa Cruz County to protect residences from the pounding force of waves at high tide during the storms. This picture was taken on February 11th. ---University of Chicago photo.

5. HIGH WINDS in SOUTHWESTERN UTAH on February 18, 1983

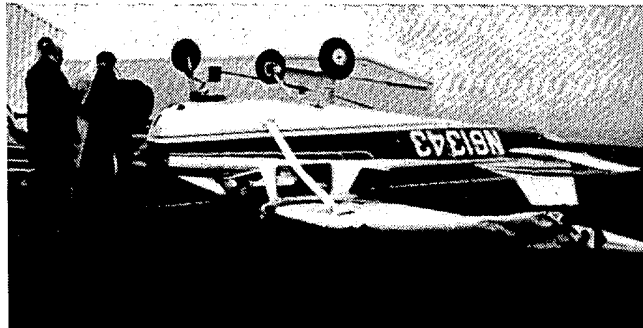
High winds accompanying a strong cold front caused widespread damage throughout Utah and northern Arizona on February 18th. Southwestern Utah and the Lake Powell area were hardest hit as the winds reached hurricane force in the late afternoon and early evening (see map below). Although there were no deaths, 3 people were injured and the total damage was estimated to be \$4.3 million.



All of the pictures below are of damage at St. George, Utah.



Half of a double-wide mobile home blown over.



One of a dozen damaged aircraft which were tied down at St. George Airport.



Boat and trailer moved by winds.

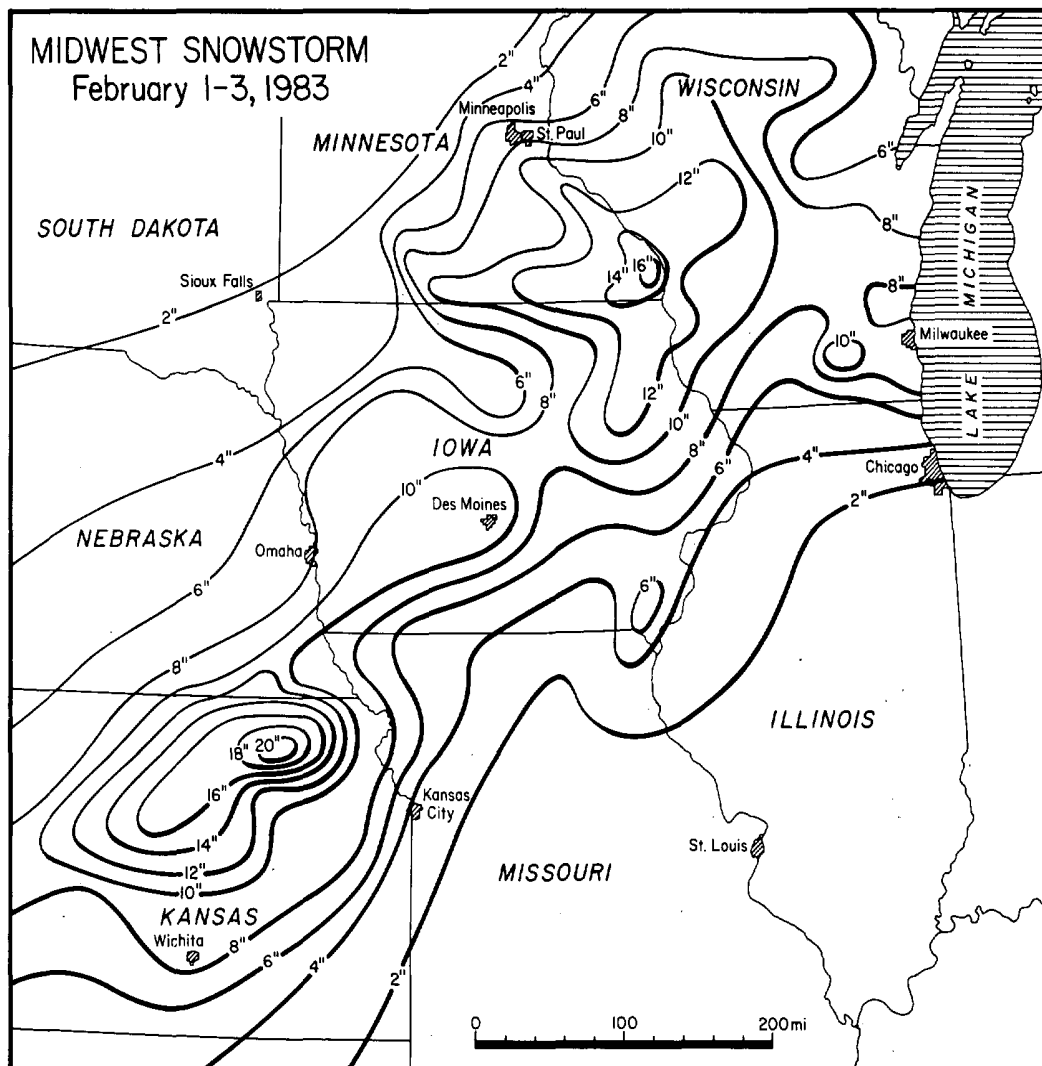


Uprooted pine tree.

---All photos courtesy of the Cedar City Spectrum. Map and photos supplied by David Carpenter, NWSFO Salt Lake City, Utah.

6. SNOWSTORM in the MIDWEST STATES on February 1-3, 1983

A major winter storm in the midwest states dumped up to 20 inches of heavy snow in a band from central Kansas, through Iowa, to central Wisconsin from February 1st to the 3rd (see map below). The heaviest amounts (greater than 1 ft.) fell in northeastern Kansas and the bluff region of extreme southeastern Minnesota. Winds over much of the area gusted to between 40 and 50 mph creating ground blizzards and huge drifts. 3 deaths and at least 5 injuries are attributed to the storm. ---Data supplied by NWSFOs at Des Moines, IA; Topeka, KS; Minneapolis, MN; Omaha, NE; and Milwaukee, WI.



STORM DATA AND UNUSUAL WEATHER PHENOMENA

FEBRUARY 1983

PLACE	DATE	TIME - LOCAL STANDARD	LENGTH OF PATH (MILES)	WIDTH OF PATH (YARDS)	NO. OF PERSONS				ESTIMATED ¹ DAMAGE	CHARACTER OF STORM
					KILLED	INJURED	PROPERTY	CROPS		
ALABAMA										
Albertville, Marshall County	22	1528CST	2.2	440	0	2	6	0	Tornado (F2)	A tornado touched down in the Whitesville Road area of Albertville and inflicted heavy damage as it moved northeast. There were several close calls that included the tornado passing very near a school bus loaded with children and one lady that held onto a tree as her nearby home was hit, but very fortunately only two people had minor injuries. They were injured when their mobile home was demolished. The storm destroyed 4 houses, 11 mobile homes, 1 business and 1 chicken house. One home, 4 mobile homes and 17 other buildings were heavily damaged. Thirteen homes and one chicken house had minor damage. There was also extensive damage to utility lines and trees and 3 school buildings received some damage. The most concentrated damage was in a small mobile home park about a mile north of where the tornado first touched down. Only 1 of the 10 mobile homes in the park escaped damage. Large hail preceded the tornado. Hail to baseball size had been reported earlier about 9 miles southwest as the large thunderstorm moved in. A free-lance photographer captured the storm on film from his vantage point about 5 miles away as it moved into Albertville. This was unusual in that tornadoes in Alabama are rarely photographed. This was a classic event in that the tornado came out of a well defined wall cloud under the rain free base and a second, but much smaller wall cloud was also visible.
Fort Payne, DeKalb County	22	1710CST			0	0	4	0	Wind	Thunderstorm winds overturned 2 police cars and 2 pickup trucks with one vehicle severely damaged.
2 ARIZONA										
Page, Coconino County	18	1800MST			0	0	0	0	High Winds	Gusts to 63 MPH, constant 45-50 MPH.
3 ARKANSAS										
Nevada	09	0630CST	-	-	0	0	2	0	Heavy Rains	Heavy rains caused a portion of a ceiling to fall at the Nevada County Courthouse, Prescott.
4 CALIFORNIA, Northern										
Humboldt County	8	2230-2240PST			0	0	4	5	Thunderstorm	Lightning struck a house and power station. There were power outages. Trees were knocked down. Highway 101 was closed for four hours because of downed trees. There were wind gusts of 58 mph in Eureka and 63 mph at Trinidad Head. Some roads were damaged in Eureka and Crescent City.
Del Norte, Humboldt and Mendocino Counties	17-18	1200-1200PST			0	1	6	5	Heavy Rain	There were 5.8" of rain in 24 hours at Gasquet. Highway 199 was closed due to numerous landslides. Highway 101 was closed because of downed trees and a bridge was swept away south of Crescent City. There were 4" of rain in 27 hours at Leggett. Power outages were caused by washed out trees. One person received injuries when a tree fell on his house in Garberville.
Northern and Central California	26-27	1200-1800PST			-	4	6	4	Heavy Rain, Wind	Gusty winds up to 55 mph battered the central coast. Heavy rains caused landslides and closed many roads in northern coastal mountains. Highway 1 and 101 were closed for a time. Clear Lake reported 4.25" of rain in 36 hours which caused flooding around the lake. Streams were flooded in the north because of locally heavy showers. Snow was reported at 1000-ft. level. Higher elevations reported snow piled up to 3 feet in 36 to 48 hours.
Santa Rosa and Sonoma Counties	27	0920-0925PST	3/4	300	-	-	5	5	Tornado (F1), Wind	A tornado took the roof off of one house on Oak Haven Court. Portions of shingles were taken off of 2 other homes. Some trees were laid over. Only minor damage was reported. Minor wind damage was also reported 15 miles northeast of the tornado path.
4 CALIFORNIA, Southern										
Inyo and Mono Counties	18	?			0	?	?		Windstorm	The storm caused some broken tree limbs. Winds were observed at 45 MPH at Bishop Airport.
Los Angeles and Orange Counties	24-28	?			0	?	?		Heavy Rain	Flooding caused some damages to about 30 cars and an apartment building in Anaheim (Orange County) when water rose to a depth of 4 feet. Street flooding in Los Angeles and Orange Counties caused extensive damage to property. Property damage Estimate Unknown.
Inyo and Mono Counties	28	?			0	?	?		Windstorm	Major power outage late evening. Some trees blown down as well as power lines. Winds gusted to 48 MPH late evening at Bishop Airport with report from Local Fire Department of Some 63 MPH Winds.
Ventura County	28	?			0	?	Est. 1mi1.		Heavy Rain	Flooding caused an estimated \$1 million in damage to homes and business property with evacuation of many people. Over 2.7 inches of rain fell in the already soaked Ojai area.
5 COLORADO										
Southwest Colorado	4-5				0	0	0	0	Heavy Snow	Heavy snow fell in southwestern Colorado, with 24 inches recorded at Wolf Creek Pass during the two day period. Purgatory ski area received 16 inches, with 9 inches in 24 hours at Durango.
Northeast Foothills	19	1120MST			0	0	0	0	High Winds	Winds gusted to 60 MPH in Larimer County at Fort Collins and near Wellington.
Mountains, East	19-20				0	0	5	0	High Winds, Snow	A storm system roared through the state, bringing snow and strong winds to many areas. The combination of the two elements closed highways and stranded travelers in east central and southeast Colorado, with snowdrifts of up to 5 feet and whiteout conditions at times. Winds on the plains gusted as high as 68 MPH, with speeds frequently in the 30 to 50 MPH range. Power lines were damaged by the wind in many spots. Pueblo was particularly hard hit, suffering wind damage to buildings, street lights, and power lines. A tennis club was extensively damaged, windows were broken, and several trees fell on houses. Over \$200,000 damage was reported in the city. Travel was very hazardous in the mountains of Colorado as well; around a foot of snow fell in many areas.
6 CONNECTICUT										
Statewide	7	All Day			0	0	0	0	Heavy Snow, Rain	Heavy snow accumulated generally 8 to 12 inches across the state but only about 4 inches fell in the coastal area before changing to moderate to heavy rain. Some rain became mixed with the snow in the central portion of the state during the afternoon.
Statewide	11-12	Evening Early AM			0	0	0	0	Heavy Snow and Blowing Snow	Heavy snow began falling during rush hour Friday evening and was accumulating very quickly at the rate of 1 to 2 inches per hour for almost 12 hours continuing into Saturday morning. At Bradley International Airport in Windsor Locks, the National Weather Service reported a storm total of 21 inches. Nineteen inches fell during 12 hours establishing a new record. Numerous motorists were stranded on state highways especially in Fairfield County. Emergency shelters in New Haven and Bridgeport were jammed and travel was just about impossible due to near zero visibility in the heavy snow and blowing snow with winds gusting to at least 30 MPH. About 300 people spent the night at the Hartford Civic Center after being snowed in during an evening concert.

STORM DATA AND UNUSUAL WEATHER PHENOMENA

FEBRUARY 1983

PLACE	DATE	TIME - LOCAL STANDARD	LENGTH OF PATH (MILES)	WIDTH OF PATH (YARDS)	NO. OF PERSONS		ESTIMATED DAMAGE		CHARACTER OF STORM
					KILLED	INJURED	PROPERTY	CROPS	
7 DELAWARE									
Statewide	6-7				0	0	0	0	Snow, Sleet, Rain
<p>Low pressure moving out of the Gulf of Mexico brought snowfall amounts of 4 to 6 inches to New Castle and Kent Counties. To the south, 3 inches or less were reported. Snow began during the morning hours on the 6th, became mixed with sleet and changed to rain before ending shortly after dawn on the 7th.</p>									
Statewide	11-12				2		5	0	Snow, Wind
<p>Low pressure moved from the southeast corner of the nation, northeastward along the coast, bringing one of the greatest snow storms on record to much of the state. Snow began during the early morning of the 6th and ended about 24 hours later. Amounts of 10 to 15 inches were common, with the greatest (around 20 inches) over extreme northern New Castle County and along the border of Dover and Sussex Counties. The largest official amount was 21 inches at Milford. Between 5 and 10 inches fell over southern Sussex County. Northeast winds gusting to over 50 MPH combined with wave action to cause beach erosion and property damage in the South Bethany area, with one road partially washed out. The storm was a factor in two fatalities: one, a man was found in the snow near Georgetown, the other, an elderly woman found alongside her mobile home near Harrington, both on the 12th. There were an underterminable number of injuries attributed to falls and other storm-related causes.</p>									
8 FLORIDA									
All of Florida	01 0600EST 02 1800EST	-	-	-	4	32	7	-	Severe Thunderstorms and Tornadoes
<p>A line of thunderstorms moved eastward into the western Florida Panhandle before dawn February 1 and continued southeastward through the entire state exiting the southeast coast and Keys around sunset February 2. 18 Tornadoes occurred along with severe thunderstorm downbursts, hail, and heavy rains. No extensive flooding was reported although short-lived local flooding was observed. Four people were killed along with several serious injuries requiring hospitalization, and about 200 people were left homeless. The Orlando area in Orange County of Central Florida probably suffered the most extensive property damage probably because it was the most urbanized area to be hit with severe weather.</p>									
Baker, Okaloosa County	01 0710EST	-	-	-	0	0	0	-	Hail
<p>A pre Squall line thunderstorm produced Walnut size hailstones. The storm moved rapidly northeast into Alabama.</p>									
Warrington, Pensacola, Escambia County	01 0845EST	5	40		1	0	5	-	Tornado (F1)
<p>A bridge tender at the Bayou Chico drawbridge between Warrington and West Pensacola reported a tornado destroyed traffic barriers. Pensacola radar had indications of a Tornado in the same area at about the same time. The storm moved northeast into West Pensacola and at about 0857EST caused damage to trees, power lines, blew traffic lights off support poles, and damaged roofs on several structures. A wind gust to at least 80 m.p.h. was reported by a radio station at about 0900EST and it could have been higher except the anemometer was only calibrated to 80. One person was killed in the aftermath of the storm; he was electrocuted by a live line which had become wrapped around a tree that had been blown into his home.</p>									
Gulf Breeze, Santa Rosa County	01 0910EST	.5	20		0	0	2	0	Waterspout/ Tornado (F0)
<p>A Waterspout moved ashore along the beach 6 miles east of Gulf Breeze south of Pensacola Bay. Mostly tree limb damage was reported although one auto on the highway along the beach was overturned.</p>									
Auburn, Okaloosa County	01 0930EST	.4	20		0	0	4	-	Tornado (F1)
<p>Tornado uprooted the concrete base of a 60-foot metal TV antenna and blew the tower over. Metal storage sheds and barns in the area were demolished, but a chicken house 30 feet away from one of the destroyed sheds was left completely intact. Damage was primarily in the north half of the county. The south half close to the Gulf reported strong wind gusts but only slight damage with heavy rainfall.</p>									
FLORIDA									
New Harmony, Walton County	01 1030EST	.3	30		0	1	4	-	Tornado (F2)
<p>Tornado lifted a house trailer off its blocks, turned it upside down and smashed it to the ground. The occupant was pinned under the refrigerator and required hospitalization for broken bones.</p>									
Blue Pines Beach, Walton County	01 1030EST	-	-		0	0	5	-	Thunderstorm winds
<p>Sea Bluff Condominium had shingles blown off its roof. A few power lines were also blown down.</p>									
Panama City Beach, Bay County	01 1800EST	-	-		0	0	3	-	Thunderstorm winds
<p>Winds blew roofing from a motel as the squall line moved onto Panama City Beach.</p>									
Tallahassee, Leon County	01 2200EST	-	-		0	0	3	-	Lightning
<p>Lightning started several fires the most serious of which was a home where the occupants were sound asleep. The two occupants escaped injury when one smelled smoke after getting up to go to the bathroom. Tree and power line damage was also reported as was minor damage to a few other homes.</p>									
Pine Island, Hernando County	02 0430EST	1	20		0	0	4	-	Tornado (F1)
<p>Tornado destroyed a mobile home, damaged several permanent homes and uprooted numerous trees.</p>									
Floral City, Citrus County	02 0445EST	2	30		0	1	4	-	Tornado (F1)
<p>Tornado cut a swathe through a mostly rural area with resulting damage to mobile homes, road signs, and power lines. Numerous trees were also uprooted.</p>									
Belleview, Marion County	02 0515EST	-	-		0	0	2	-	Thunderstorm winds
<p>Winds caused mostly minor damage in this rural area mostly to trees, sheds, and antennas.</p>									
Hawthorne, Alachua County	02 0526EST	-	-		1	6	5	-	Thunderstorm winds
<p>Downburst winds collapsed a newly-built prefabricated home east of Hawthorne. One person was killed when the home was collapsed on top of him. A church was demolished. Stores and homes in the area also suffered damage, the same type of downburst winds also struck sections of Gainesville and Waldo also in Alachua County with roof and sign damage.</p>									
Shiloh, Marion County and Micanopy, Alachua County	02 0540EST	.3	20		0	4	5	-	Tornado (F2)
<p>Tornado ripped through a trailer park along the Alachua-Marion County line destroying five trailers and ripping roofs off adjacent permanent homes. Three of the four injured people had fractures and facial injuries and required hospitalization.</p>									
St. Petersburg Pinellas County	02 0600EST	.6	40		0	1	5	-	Tornado (F1)
<p>Tornado damage included 4 houses and twenty business properties. Window glasses were broken along with power lines blown down and trees uprooted. the one injury was not serious.</p>									
Orange Park, Clay County	02 0605EST	-	-		0	0	6	-	Thunderstorm winds
<p>Downburst winds damaged autos, businesses, 75 homes, and numerous trees. Jacksonville Naval Air Station 5 miles north northeast of the damage path in Orange Park recorded a wind gust of 98 knots (113 m.p.h.) at 0613EST.</p>									
Barberville, Volusia County	02 0630EST	.2	10		0	0	3	-	Tornado (F1)
<p>Tornado damaged one house mostly roof and broken windows; sheds and trees blown over.</p>									

STORM DATA AND UNUSUAL WEATHER PHENOMENA

FEBRUARY 1983

PLACE	DATE	TIME - LOCAL STANDARD	LENGTH OF PATH (MILES)	WIDTH OF PATH (YARDS)	NO. OF PERSONS		ESTIMATED DAMAGE		CHARACTER OF STORM
					KILLED	INJURED	PROPERTY	CROPS	

PLACE	DATE	TIME - LOCAL STANDARD	LENGTH OF PATH (MILES)	WIDTH OF PATH (YARDS)	NO. OF PERSONS		ESTIMATED DAMAGE		CHARACTER OF STORM
					KILLED	INJURED	PROPERTY	CROPS	

— FLORIDA									
Dover, Hillsborough County	02	0650EST	4	40	0	2	5	-	Tornado (F2)
Probably part of the same storm complex which had hit across the bay in St. Petersburg earlier. 25 mobile homes suffered various degrees of damage. Windows were broken, trees uprooted, and signs blown over.									
Arcadia, DeSoto County	02	0820EST	.5	30	0	0	3	-	Tornado (F1)
Tornado destroyed a shed and tore the roof off one home in the area. Tree damage was also reported.									
New Smyrna Beach, Volusia County	02	0840EST	2	50	0	0	5	-	Tornado (F1)
Tornado overturned several mobile homes and uprooted trees. One tree was blown through the roof of a house. A two-ton compressor unit was lifted off the roof of a condominium. Extensive damage was done to boats and the marina. Power lines blown down. Coast Guard at Ponce De Leon Inlet near New Smyrna Beach reported a wind gust to 63 m.p.h. at 0840EST.									
Orlando, Orange County	02	0845EST	1	20	0	0	5	-	Tornado (F2)
Tornado destroyed two homes in north Orlando along with uprooting many trees. Road signs and power lines also blown over.									
Winter Park, Orange County	02	0900EST	.2	20	0	1	2	-	Tornado (F0)
Tornado blew road signs and small billboards onto cars. Also tree and power line damage reported.									
Orlando, Orange County	02	0905EST	5	50	0	9	6	-	Tornado (F2)
Tornado destroyed eight units at a large apartment complex in southeast Orlando, and damaged 56 other units. Roofs were torn off 15 homes, and there was extensive road sign damage. All of the injuries were in the apartment complex.									
DeSoto City, Highlands County	02	0920EST	1	40	1	6	5	-	Tornado (F2)
Tornado destroyed 15 mobile homes, damaged 21 others; two houses were damaged and one automobile was destroyed. The fatality occurred when a mobile home was overturned and its occupant suffered a broken neck.									
South Rockledge, Brevard County	02	1048EST	.4	30	0	0	4	-	Tornado (F1)
One building had roof damage when the tornado struck. It was an auto repair shop where witnesses said parts flew around the interior of the building.									
Jensen Beach, Martin County	02	1320EST	2	50	0	1	5	=	Tornado (F2)
Tornado destroyed several unoccupied mobile homes and damaged 14 others. One permanent home had its roof blown off. Trees and power lines were blown down.									
Miami Beach, Dade County	02	1540EST	-	-	1	0	2	-	Thunderstorm
Damage from gusty winds and heavy rains of the thunderstorm was minor but included downed power lines. An elderly woman was electrocuted by a live wire downed either by wind or lightning.									
Longboat Key, Sarasota County	07	1500EST	-	-	0	0	4	-	Windstorm
Strong winds associated with a strong low pressure system ripped into the southwest Florida coast and damaged roofs, trees, and downed power lines.									
Suburban Miami, Dade County	10	1645EST	.5	20	0	0	1	-	Tornado (F0)
Tornado knocked down power lines and blew out windows as well as downing trees. Overall damage was slight. At 1718EST, the National Hurricane Center at Coral Gables, about 10 to 12 miles northeast of where the tornado was reported recorded a wind gust to 65 knots (76 m.p.h.). Winds overturned 13 light planes at a general aviation airport.									

— FLORIDA									
Broward County	10	1700EST	.5	20	0	0	4	-	Tornado (F0) Hailstorm
Tornado briefly touched down in west Hollywood causing only damage to trees and a few roofs. Hail as large as golfballs pelted parts of Broward County damaging roofs, breaking automobile glasses and leaving hailstones as much as three inches deep in some areas.									
West Palm Beach, Palm Beach County	10	1742EST	2	40	0	0	3	-	Tornado (F1)
Tornado uprooted trees, blew down pool screens and metal fences, and knocked down power lines.									
Miramar, Broward County	16	1508EST	-	-	0	0	3	-	Thunderstorm winds
Strong winds downed large trees, power lines, and caused some roof damage.									
Most of Florida	27	-	-	-	0	0	-	-	Windstorm
Gale Force winds pounded the state as a strong low pressure system moved east across the Gulf of Mexico and across the Peninsula into the Atlantic. The storm's other effects included beach erosion and coastal flooding in conjunction with high tide. Thunderstorms associated with this system also dropped heavy rains and caused periods of local flooding.									
9 GEORGIA									
Tift County	02	0130EST	-	-	0	0	4	0	Wind
Thunderstorm winds downed several trees and destroyed 2 barns and a grain bin west of Tifton.									
Rabun County	02	0400EST-0700EST	-	-	0	0	4	0	Flash Flood
Five to six inches of rain fell on Rabun County during the night, causing some bridges to wash out. A 10-inch water main broke in Clayton, causing some people to be without water for 3 days.									
Northeast Georgia Mountains	05-06	Early Evening thru Mid-Morning	-	-	0	0	4	0	Winter Storm
A winter storm brought snow, sleet, and freezing rain to the northeast Georgia mountains. Most of the precipitation during the night was in the form of snow. Accumulations of 4 to 6 inches were common with an accumulation of 7 inches reported in the mountains of White County. Ice accumulations caused some power line damage.									
Ben Hill County	22	1545EST	2.5	50	0	0	5	0	Tornado (F1)
A tornado touched down in the southwest part of Fitzgerald. As the tornado moved northeast, it damaged about 20 houses, a doctor's office building, a convenience store, and bleachers at two ball fields. Several trees were uprooted and the falling trees caused some roof damage.									
Bacon County	22	1805EST	2.0	20	0	0	4	0	Tornado (F1)
A tornado touched down about 2 miles northwest of Alma at Lake Lure. The tornado lifted the roof from a home, destroyed a hog barn, and damaged a small boat. Several trees were uprooted.									
Bacon County	22	1805EST	4.0	30	0	3	5	0	Tornado (F1)
A tornado touched down about 3 miles east of Alma in the McCall and Rockingham Communities. One barn was destroyed and several were damaged in McCall. Four mobile homes were destroyed, injuring two adults and one child. A few trees were blown down.									
10 IDAHO	— NONE REPORTED								
11 ILLINOIS	— NONE REPORTED								
12 INDIANA	— NONE REPORTED								

STORM DATA AND UNUSUAL WEATHER PHENOMENA

FEBRUARY 1983

PLACE	DATE	TIME - LOCAL STANDARD	LENGTH OF PATH (MILES)	WIDTH OF PATH (YARDS)	NO. OF PERSONS		ESTIMATED ¹ DAMAGE		CHARACTER OF STORM
					KILLED	INJURED	PROPERTY	CROPS	

PLACE	DATE	TIME - LOCAL STANDARD	LENGTH OF PATH (MILES)	WIDTH OF PATH (YARDS)	NO. OF PERSONS		ESTIMATED ¹ DAMAGE		CHARACTER OF STORM
					KILLED	INJURED	PROPERTY	CROPS	

13 IOWA

IOWA	1-3								1 4 4 0 Winter Storm
------	-----	--	--	--	--	--	--	--	----------------------

A major winter storm moved into Iowa beginning on Tuesday and continued until Thursday. Snow accumulated 9 to 12 inches in a band from Southwest to Northeast Iowa with amounts diminishing to an inch in the Southwest and Southeast sections of the state. High winds (20-35 MPH) from the North to Northeast began on Wednesday and piled up the snow in drifts, making snow removal difficult. Hundreds of schools were closed, and numerous businesses were shut down due to the weather. One man in Parkersburg died of an apparent heart attack while using his snowblower at his home. Some minor injuries related to snow-sladdening occurred in the Des Moines area. Several airports were slowed or closed during the storm. The roof of a warehouse belonging to Winnebago Industries in Forest City collapsed due to a snow buildup, caused a great deal of property damage.

14 KANSAS

Entire State	01- Mrng-02 Aftn								0 0 5 0 Winter Storm
--------------	------------------	--	--	--	--	--	--	--	----------------------

A Winter Storm dropped 6 inches to a foot of snow from southwest to northeast across Kansas. This snow fell atop a cover of 4 to 10 inches already on the ground from a storm on January 30th. At least 8 inches was on the ground on the 2nd east of a line from Smith Center to Scott City to Hugoton, and west of a line from Leavenworth to Wichita to Great Bend to Meade. At least 4 inches covered all but that part of Kansas east of a line from Kansas City to Arkansas City, and that section received enough freezing rain to break some power lines. More than a foot of snow was measured at Liberal, and also in most of the North Central and Northeast. As much as 20 inches covered northern Pottawatomie, southern Marshall, and southwest Nemaha counties. Stiff north winds piled up drifts 6 to 10 feet deep in north central and northeast Kansas and closed most roads. Interstate highways 70 and 135 were closed from the afternoon of the 2nd through about noon on the 3rd. Schools were closed on the 2nd and 3rd, and where snow was heaviest some remained closed the 4th.

15 KENTUCKY

East	11 mrng	-	-	0	0	0	0	0	Snow
------	---------	---	---	---	---	---	---	---	------

Snowfall ranging from three to six inches fell over eastern Kentucky. Many schools closed. Several power outages occurred, apparently caused by wet, heavy snow breaking tree limbs which fell onto power lines. Several minor traffic accidents were reported due to snow-covered roads.

16 LOUISIANA

Tangipahoa Parish	01 0300CST								4 High Wind
High winds accompanying a squall line caused damage to trees, power lines and several homes. There were no injuries reported.									
St. Bernard Parish	01 0430CST								4 High Wind
High winds accompanying a squall line destroyed three mobile homes near the town of Violet. There were no injuries reported.									
Arcadia Parish	05 1430CST								4 High Wind
High wind accompanying a thunderstorm struck the town of Rayne, La. inflicting heavy damage to Rayne High School and several nearby homes. No injuries reported.									
West Baton Rouge Parish	05 2030CST	1	50						4 Tornado (F0)
A small tornado struck the Live Oak subdivision in the town of Brusly Landing. Severe roof damage occurred to two homes with numerous trees and fences destroyed. No injuries reported.									
St. Helena Parish	07 2200CST								4 Lightning
Lightning struck one house in the town of Darlington, starting a fire which totally destroyed the structure.									
Arcadia Parish	09 1730CST	3	150						5 Tornado (F3)
A tornado was observed to touchdown about 5 miles southeast of Eunice, La. The path was about 3 miles long and 150 yards wide. One house was almost totally destroyed. Residents heard no sound other than the debris as the house was demolished. None of the 5 persons in the house was injured.									

LOUISIANA

Arcadia and St. Landry Parishes	09 1745CST	21	150						7 6 Tornado (F3)
A tornado touched down just east of Church Point in Arcadia Parish and moved northeast narrowly missing the Troop K State Police Headquarters 4 miles east of Opelousas. The tornado continued to a point near Port Barre in St. Landry Parish. Total path length was 21 miles and varied between 50 and 200 yards wide. Extremely strong winds of 70 to 80 mph accompanied the mesocyclone of this tornadic storm. The winds caused considerable damage in the eastern portion of Opelousas. A grocery store and several other businesses received extensive wind damage. At Troop K Headquarters very strong winds were present before the tornado became visible. State police less than 1 mile away from the tornado reported 4 or 5 funnels at one time. However, the damage track indicated these were suction vortices, all part of the same tornado. Even though the tornado struck a rural area, at least 7 homes were destroyed along with one church, a grain elevator, and numerous power lines.									
Rapides Parish	21 1730CST								4 High Wind
A severe thunderstorm accompanied by high wind caused wind damage in the northwest portion of Alexandria. Several homes had roofs blown off. There were numerous power lines down, windows blown out, and severe tree damage.									
St. Mary Parish	21 night								3 High Wind
High winds accompanying a thunderstorm unroofed one house near the town of Franklin.									
St. Tammany Parish	21 2000CST								1 4 High Wind
A line of thunderstorms produced winds measured at 60 mph by NWS wind equipment on Lake Pontchartrain. One small boat capsized causing one man to drown near Mandeville. Also, several trees were uprooted in Mandeville, one falling on a house causing considerable damage.									

17 MAINE

Lewiston-Auburn, and Mechanic Falls, Androscoggin County	03 AM EST								0 0 4 0 Wind and Rain
Strong winds, with the Lewiston-Auburn Municipal Airport recording gusts to 40 mph, felled numerous tree limbs which produced a dozen power failures in the twin cities. Winds also blew down part of a tree which damaged a Mechanic Falls mobile home. About one inch of rain fell locally in a 12-hour period which produced minor street and cellar flooding due to frozen drains.									
Statewide	07- Early Morning 08	1	0	5	0				Heavy Snow and Winds
A slow moving northeaster deposited 7 to 19 inches of snow over the state. Wind gusts to 40 mph were common with Owl's Head Light having gusts to 55 mph and Matinicus Rock Light having 60 to 65 mph gusts. Heaviest snowfalls of 16 to 19 inches were over York County. The fine snow and strong winds produced blinding white-outs and 4 to 5 foot snowdrifts which impeded travel and snow removal. Many businesses and schools closed early Monday and remained closed Tuesday. Most Monday night activities and events were cancelled. Maine State Ferry Service cancelled Monday afternoon trips from Penobscot Bay Islands. Kennebunk had a 10 by 20 foot area of Beach Street washed away by 15 foot seas. One death was attributed to the storm when a 66 year old Waldoboro man succumbed while operating a snowblower.									
York and Cumberland Counties	11- Late Evening 12								0 0 4 0 Heavy Snow and Winds
This was the second snowstorm within a week. It left 6 to 12 inches of snow over coastal sections of York and Cumberland Counties with York County receiving the heaviest accumulations. Snowfall amounts tapered off rapidly away from the coast. No snow fell over the mountains or over northern or eastern Maine. Strong winds with gusts to 44 mph at Portland caused drifting snow which impeded coastal travel. Drifts of 10 to 12 feet high plagued Biddeford Pool. This is the storm that set many snowfall records along the Eastern Seaboard but gave Maine a glancing blow.									

STORM DATA AND UNUSUAL WEATHER PHENOMENA

FEBRUARY 1983

PLACE	DATE	TIME - LOCAL STANDARD	LENGTH OF PATH (MILES)	WIDTH OF PATH (YARDS)	NO. OF PERSONS				ESTIMATED DAMAGE		CHARACTER OF STORM
					KILLED	INJURED	PROPERTY	CROPS	PROPERTY	CROPS	
18 MARYLAND and D.C.											
Northeastern, Central & District of Columbia	6-7				0	0	0	0	0	0	Snow, Sleet, Rain Low pressure moving out of the eastern Gulf of Mexico brought 4 inches of snow to the northern Eastern Shore counties and 4 to 5 inches to the central portion of Maryland and the District of Columbia. Snow began shortly after dawn on the 6th, in the west sections, spreading across the remaining area during the day - changing to freezing rain before ending early on the 7th. From 1 to 3 inches of snow fell over the rest of the state.
Statewide and District of Columbia	10-12				3	6	0	0	0	0	Snow, Wind One of the heaviest snowfalls on record occurred as an intense low pressure center moved up the coast from Georgia. Snow began during the afternoon or evening of the 10th and tapered off or ended some 24 hours later. Depths of 15 to 25 inches were common over the area with heaviest amounts through the north central counties. The greatest official total was 31 inches measured at Catoctin Park and Braddock Heights in Frederick County, and at Smithsburg in Washington County. Three fatalities were directly related to the storm: A woman who was found in an automobile in Glen Burnie... apparently a victim of carbon monoxide due to a snow-blocked exhaust; a Glen Burnie man who collapsed and died from exposure while walking home from his stranded car; and a man found on the Ellipse in Washington, D.C... another exposure victim. A number of injuries occurred from falls, sprains, motor vehicle accidents, plus injuries caused by careless operation of snow-blowing machines. There were some narrow escapes... one couple, traveling south through the area, were caught in drifted snow near Columbia. They were rescued when their cries for help were finally heard. In Baltimore, the barking of a dog was responsible for saving the life of a man who had collapsed in the snow. While in Annapolis a 3-year-old child fell through a third floor window into a 3-foot snow drift and returned to his door unhurt. Activities came to a virtual standstill with roads blocked... and no transit or air travel. Many plastic green houses collapsed... and an estimated loss of over \$1 million dollars was reported by nurseries in the vicinity of Columbia. Other damage consisted of structural weakening or collapse of roofs, including a field house at the Naval Academy, plus sheds, barns and canopies over the state. In Ocean City 3-4 feet of sand was washed from the beach and a 24-unit condominium under construction collapsed... estimated loss \$150,000.
19 MASSACHUSETTS											
Statewide	7	All Day			0	0	0	0	0	0	Heavy Snow, Rain Heavy snow accumulated 8 to 18 inches across the state except less than 6 inches over Cape Cod and the Islands where a changeover to rain occurred sooner. Heavy snow changed to moderate to occasionally heavy rain over extreme eastern Massachusetts by early afternoon.
Statewide	11-12	Evening Early AM			0	0	0	0	0	0	Heavy Snow, Blowing Snow Heavy snow began falling across the state during Friday evening. Snow accumulated at the rate of 1 to 2 inches per hour and strong northeasterly winds gusting 40 to 60 MPH caused near blizzard conditions with visibility near zero and considerable drifting. Airports were closed, including Logan International in Boston, for up to 15 hours. Most public transportation was halted as highway travel became nearly impossible as the entire state received 12 to 20 inches of snow in 12 hours or less. Thunderstorms occurred during the height of the storm. Peak wind gusts hit 72 MPH at Chatham on Cape Cod and 71 MPH at Blue Hill Observatory in Milton. The storm was termed the worst snowstorm to hit the state since the famous Blizzard of '78. Many retail businesses remained closed on Saturday.
20 MICHIGAN - NONE REPORTED											
21 MINNESOTA											
Southeast	1,2,3				0	0	0	0	0	0	Heavy Snow Snow began during the afternoon of February 1st in southeast Minnesota and continued until late in the morning of February 3rd. Northwest winds increased to 30-40 mph by noon on the 2nd with gusts up to 50 mph. Blowing and drifting snow closed several highways and did not diminish until the afternoon of February 3rd. Rochester received 11.6 inches of snow which set a record for the most snowfall in a single storm for the month of February. A total of 12-15 inches fell in Houston, Fillmore and Winona counties in extreme southeast Minnesota. Ten to twelve inches fell in the area south of Red Wing and east of Austin.
22 MISSISSIPPI											
Madden, Leake County	1	0030CST			0	0	5	0	0	0	Winds Severe thunderstorms moved across southeast Leake County demolishing a mobile home. Six thousand baby chickens were killed when a chicken house was destroyed. Four other chicken houses, two barns and two sheds received major damage.
Hattiesburg	1	0300CST			0	0	5	0	0	0	Heavy Rain Heavy thunderstorms moved across the Hattiesburg area dropping from three to four inches of rain. This produced some urban flooding in Hattiesburg. Highway 49 and many local streets were flooded. Four homes and three businesses received some flooding.
Jackson County	1	0430CST			0	1	5	0	0	0	Winds/Rain Heavy thunderstorms produced widespread wind damage and minor urban flooding across Jackson County. A man was injured when his mobile home and utility shed were destroyed in the Franklin Creek area. A power pole fell through a mobile home in Big Point. Widespread wind damage occurred in western Moss Point. Minor urban flooding was reported in Pascagoula.
Jackson County	1	0500CST	.3	75	0	3	5	0	0	0	Tornado (F1) A small tornado touched down briefly along Highway 614 three miles southeast of Hurley. The tornado turned over a mobile home.
Columbia, Marion County	1	0630CST			0	0	5	0	0	0	Flash Flooding Thunderstorms dropped four inches of rain across most of Marion County in about four hours causing flash flooding in Columbia. A nursing home, a toy factory and a food store were flooded. Nine mobile homes on display two miles east of Columbia along Highway 98 were washed off their foundation. One was hurled down a hill and crushed.
Walshall County	5	1430CST			0	0	4	0	0	0	Winds Thunderstorm winds turned over a mobile home in Mesa and destroyed a barn along Highway 48 in the southeast corner of the County.
23 MISSOURI - NONE REPORTED											
24 MONTANA - NONE REPORTED											
25 NEBRASKA											
South Central, Northeast and Southeast Nebraska	01-03	Morning thru Morning			2	1	4	0	0	0	Heavy Snow Near Blizzard Heavy snow of 4 inches or more fell south of a line from StouxCity to Beaver City. Heaviest snowfall of 6 to 12 inches occurred in a 30 to 40 mile wide band from Fairbury through Nebraska City. Strong north winds gusting 35 to 40 MPH caused ground blizzards with considerable drifting snow through the morning of February 3rd. A number of roads became blocked by drifting snow. Four to seven foot drifts were reported especially in the southeast. Numerous schools and businesses closed. A 83 year old woman died of exposure and her 82 year old husband was listed in critical condition 4 miles southeast of Bladen, when they tried to walk to a farm house from their stalled vehicle the night of February 1st during the storm. An Omaha man was also found dead of exposure. Other deaths from auto accidents and snow shoveling were attributed to the storm. Some larger snowfalls included 12 inches at Virginia and Dubois, 10 inches at Nebraska City, 9 inches at Fairbury, Beatrice and Auburn, and 8 inches at Pawnee City, Hebron, Falls City and Plattsmouth.
Southwest Nebraska	20	Morning thru Evening			0	0	3	0	0	0	Ice Storm Freezing drizzle in the early morning changed to freezing rain during the day glazing roads. Numerous vehicle accidents occurred. Several incidents of trucks sliding off the interstate through Lincoln and Keith Counties were reported. The glaze caused a power failure in North Platte and counties to the north and northeast.

STORM DATA AND UNUSUAL WEATHER PHENOMENA

FEBRUARY 1983

PLACE	DATE	TIME - LOCAL STANDARD	LENGTH OF PATH (MILES)	WIDTH OF PATH (YARDS)	NO. OF PERSONS		ESTIMATED DAMAGE		CHARACTER OF STORM
					KILLED	INJURED	PROPERTY	CROPS	

PLACE	DATE	TIME - LOCAL STANDARD	LENGTH OF PATH (MILES)	WIDTH OF PATH (YARDS)	NO. OF PERSONS		ESTIMATED DAMAGE		CHARACTER OF STORM
					KILLED	INJURED	PROPERTY	CROPS	

26 NEVADA

Reno, Washoe County	12 AM	0	0	5	0	High Wind
11 trucks overturned or damaged at Penney's Catalog warehouse. Also many fences blown down. 70 MPH wind at Reno Airport and 83 MPH in SW Reno.						
Gabbs, Nye County	12 2218PST	0	0	4	0	High Wind
Damage to trees and fences.						

27 NEW HAMPSHIRE

Statewide	07-08 Early AM EST	1	0	4	0	Northeaster
A fine falling snow coupled with winds gusting from 25 to 38 mph, produced blinding whiteouts and snowdrifts that impeded travel and snow removal. Many schools, businesses and factories closed Monday morning and remained closed Tuesday. An 89 year old Milton woman died from an apparent heart attack while going to her mailbox during the height of the storm. Minor power failures were reported with the Seabrook Beach area hardest hit with 200 customers left powerless for 2 1/2 hours. Snow amounts varied from 8 to 21 inches. The Seacoast Region received the most snow with Hampton reporting 21 inches, Milan and Durham 20 inches and Portsmouth and Dover 19 inches. The White Mountains received 12 to 17 inches. A narrow band from Keene to North Conway generally had the least snowfall of 8 to 12 inches. This storm saved the ski industry.						
Hillsborough, Rockingham, Strafford Counties	11-12 Late Evening	0	0	4	0	Snowstorm
This was the snowstorm that buried major cities along the East Coast with record snowfalls and the second big snow in less than a week. However, it gave New Hampshire a glancing blow with the Nashua area receiving the most snow with 15 to 18 inches while the Seacoast Region had 8 to 11 inches. Snowfall amounts diminished rapidly the further west and north through the state. Some businesses closed with florists hardest hit with Monday being Valentine's Day. The weight of the snow from the two storms, collapsed a 20 foot by 30 foot section of roof at the Manville Corporation in Nashua.						

28 NEW JERSEY

New Jersey, Southern	11-12 abt noon till morning	0	0	?	?	Blizzard of 1983
The storm began on the 11th and continued overnight until the morning of the 12th dumping 14.0 inches of snow on the area. The high winds with gusts and freezing temperatures lashed snow into drifts over 4 feet high. High waves and tides were close to 3 feet above normal. It crippled travel on the ground and in the air, closed many businesses and government offices.						

29 NEW MEXICO

Northwest Quarter of State	1-4 All Day	3	-	6	-	Heavy Snowstorm
Heavy snow began falling on Tuesday, February 1. The snow continued to fall through Friday, February 4. There were breaks but not enough to allow some 14,000 families on the Navajo Reservation to get through the 15 inches of snow and deep mud to get medical supplies and food. When help finally came to the Reservation in the form of National Guard trucks and helicopters there were at least three dead and many sick.						

30 NEW YORK, Coastal

New York, Coastal	11-12 abt noon till morning	0	0	?	?	Blizzard of 1983
The storm began on the 11th and continued overnight until the morning of the 12th dumping 17.6 inches of snow upon us. The devastating blizzard was like a nightmare on the 11th. It was accompanied by a thunderstorm during the snowfall. The wind was gusting over 40 MPH causing high drifts with temperatures below freezing causing a wind-chill factor to feel about 20 degrees below zero on bare skin. Vehicles were stranded in a maze on local highways, ramps and side roads. All local airports were closed. When the storm ended the medians were piled with mountains of snow.						

30 NEW YORK, Central

Oneida County	2 0730EST	0	3	4	0	Freezing Rain
Rain started falling about 7:30 AM. Temperature was below freezing in most of the County. This created freezing rain. Winds were gusting to more than 35 MPH. The result was several car and personal injuries.						
Lower Hudson/Mohawk Valleys and Catskills	6 PM	4	17	9	0	Heavy Snow
Heavy snow started to fall over all of Eastern New York Sunday afternoon. In scattered areas of Eastern New York winds picked up to create near blizzard-like conditions. Heaviest snowfall was in the Lower Hudson Valley with over one foot of snow. Life in the Northeast was again disrupted as many could not travel or get to work.						
Lower Hudson Valley	11 PM	2	35	6	0	Heavy Snow
Heavy snow and strong winds caused blizzard-like conditions in the Lower Hudson Valley. Snow depths of up to a foot and a half were reported in Westchester County. On Route 218 between Cornwall and West Point, 14 people had to be rescued. Snow drifts of up to 4 feet had blocked the road ahead and a snow slide had blocked the road behind the travelers. These people were trapped for most of the night.						

30 NEW YORK, Western

Sherman, Portland, Ripley, and other parts of Western Chautauqua County	2 Late Morning	0	3	4	-	Wind
Strong winds toppled trees and power lines. Hundreds were without electricity for many hours.						
In Portland, a roof was torn off a house. In Ripley a tractor trailer rig flipped into an oncoming car. Three persons were seriously injured.						
Power lines from Sherman to Ripley were broken by felled trees. Houses were damaged, a few extensively.						
Many points in Western and Central New York	2,4,7,12	?	?	4	-	Ice and Snow
Snow and ice are blamed for many vehicular accidents on the above dates. Roads were slippery and driving very perilous. There were numerous fender bender events, many were hospitalized, and maybe up to a dozen motorists lost their lives.						

31 NORTH CAROLINA

Western Sections	2	0	0	5	0	Wind, Flooding
A strong cold front moved rapidly through the state producing severe thunderstorms, high winds and flooding. Heavy rain, amounts ranging between 2 and 6 inches, falling on snow covered and saturated ground produced widespread flooding and caused mudslides that washed out many secondary roads and bridges. Damage estimates to roads alone, approaches \$200,000. Strong winds gusting to 60 mph downed trees and powerlines, temporarily causing power outages to thousands of homes. East of the mountains damage was light and isolated, limited to wind damage near Red Springs and Monroe where several barns were destroyed. Some minor flooding and beach erosion occurred along the coast, but damage was minimal.						
Central and Western Sections	5-6	0	0	?	0	Snow, Ice
A winter storm moved through the state producing snow in western and central sections. The snow, which changed to sleet and freezing rain before ending, caused little damage, limited mainly to traffic accidents. Snowfall amounts include: Linville 12", Boone 6", Asheville 4", Greensboro 3", Raleigh-Durham and Rocky Mount 2".						
Western and Eastern Sections	10-11	0	0	?	0	Snow, Ice
The second winter storm within a week spread heavy snows over western sections of the state and produced gale-force winds along the coast. Minor beach erosion and flooding occurred along Hatteras Island north of Avon and resulted in minor overwash of Highway 12. The snow, which changed to freezing rain, caused isolated power outages and numerous traffic accidents. Snowfall amounts include: West Jefferson 20", Linville 15", Boone 6", Asheville 5" and Charlotte 2". Damage estimates, though considered light, were unattainable.						
Wake, Harnett Counties	23 Early AM	0	0	5	0	Lightning, Hail
Strong thunderstorms moved through the central portion of the state producing pea-size hail, which covered the ground an inch deep in southern Wake County. Lightning from the storms struck the WCKB radio station in Dunn at 0200EST, igniting a fire which damaged several offices and a studio.						

STORM DATA AND UNUSUAL WEATHER PHENOMENA

FEBRUARY 1983

PLACE	DATE	TIME - LOCAL STANDARD	LENGTH OF PATH (MILES)	WIDTH OF PATH (YARDS)	NO. OF PERSONS		ESTIMATED ¹ DAMAGE		CHARACTER OF STORM
					KILLED	INJURED	PROPERTY	CROPS	
32 NORTH DAKOTA ————— NONE REPORTED									
33 OHIO ————— NONE REPORTED									
34 OKLAHOMA									
Panhandle, Northwest and Northcentral	01	All Day			0	0	?	?	Snow and Ice
The Winter Storm which began on Jan. 31 continued into Feb. This storm was covered in detail in the Jan. Storm Data.									
Northern 3/4	04	All Day			0	0	?	?	Snow
Snow covered all but the extreme southern part of the State. Heaviest reports were 6.5 inches in Sayre (Beckham County) and 5 inches in Ada (Pontotoc County). Reports of 3 to 4 inches came from as far east as the Tulsa and McAlester areas and as far south as Sulphur and Lawton. Some schools which closed on Jan. 31 did not reopen until Feb. 7th.									
Beaver County	21	All Day			0	0	?	?	Snow
Snowfall accumulations of 4 to 6 inches were reported in Beaver County.									
Pittsburg County	21	Morning			0	0	?	?	Flooding
State Highway 31 six miles west of McAlester was blocked by 3.5 to 4 feet of water after a 5 inch rain. Other nearby highways had minor flooding.									
35 OREGON ————— NO REPORT RECEIVED									
36 PENNSYLVANIA, Eastern									
Eastern Pennsylvania	06	0900EST			0	0	3	0	Heavy Snow
	07	1400EST							
Snowfall accumulated to 2 to 5 inches over most of the area; but up to 6 inches covered some sections in the southeast and up to 7 inches in the Poconos. The precipitation changed to or mixed with sleet and freezing rain for a time on the morning of the 7th over southern portions. The snow and then the sleet and freezing rain caused hazardous road conditions resulting in numerous automobile accidents.									
Eastern Pennsylvania	11	0200EST			0	0	5	0	Blizzard
	12	0500EST							
One of the worst winter storms that ever hit the East Coast of the United States deposited record snow accumulations on some sections of Eastern Pennsylvania. During part of the storm, true blizzard conditions prevailed with winds gusting over 40 MPH and visibility was near zero in falling and blowing snow. Temperatures were mostly in the teens during the storm. New records for a single storm were established with 25.2 inches at Allentown, 24 inches at Harrisburg and Lancaster and 21.3 inches at Philadelphia. Southern and east central portions of Eastern Pennsylvania generally got 16 to 25 inches of snow with some unofficial reports of 26 to 28 inches. Amounts tapered off to 8 to 15 inches northward towards Wilkes-Barre-Scranton. About 6 to 12 inches accumulated from the Middle Susquehanna Valley to the extreme northeast. Going back to extreme northwest portions of Eastern Pennsylvania only 2 to 3 inches fell. Considerable drifting occurred (up to 6 feet in spots) and many automobiles were struck or abandoned on roadways. This was mostly over the southern half and caused considerable problems for highway crews. The very hazardous weather conditions resulted in a number of traffic accidents and at least two deaths. There were also some deaths from heart attacks suffered while shoveling snow. In Lancaster County the deep snow collapsed several large roofs on factories and stores.									
36 PENNSYLVANIA, Western									
Erie County	02	1145EST			0	0	?	?	Strong Winds
Winds gusting up to 85 mph hit Erie for about one half hour causing extensive damage, but no serious injuries.									
Centre and Jefferson	12	mrgn.			2	3	0	0	Heavy Snow
A major snowstorm is blamed for two fatal accidents. The first was a three vehicle collision near Brookville (Jefferson), where one died and three were injured as a "car slipped across a snow covered road" into the opposite lane. The other accident occurred near Bellefonte (Centre), where a "tractor trailer spun on the snow covered highway and ran over" another car, killing the only occupant.									
37 RHODE ISLAND									
Statewide	7	All Day			0	0	5	0	Heavy Snow, Rain
Heavy snow accumulated generally 6 to 10 inches around the state before changing to moderate to occasionally heavy rain by early afternoon. Due to the heavy, wet snow the roof of an unoccupied warehouse building collapsed in Middleton causing an estimated \$200,000 damage.									
Statewide	11	Evening			0	0	0	0	Heavy Snow and Blowing Snow
	12	Early AM							
Heavy snow accumulated at the rate of 1 to 2 inches per hour beginning Friday evening. Strong north-east winds caused considerable blowing and drifting of the snow and an accumulation of 10 to 15 inches with greater amounts over the extreme south were reported. Travel was nearly impossible during the storm and many businesses did not open on Saturday.									
38 SOUTH CAROLINA									
Summerville, S.C. Dorchester County	02	0830EST			0	0	3	0	High winds, heavy rain.
	High winds during a thunderstorm turned over a mobile home. Power lines between Summerville and Ladson were broken by falling trees.								
Charleston, S.C. Charleston County	02	0830EST			0	0	3	0	High winds, heavy rain.
	High winds during a thunderstorm blew down several trees. One car was crushed by a falling tree. Considerable amounts of minor wind damage.								
Northwestern South Carolina	05-06				0	0	5	0	Snow, freezing rain.
	A winter storm dumped several inches of snow or ice over mountain and foothills, but mostly rain elsewhere. Snow depth in mountains was up to 5 inches. Utilities disrupted in many areas from Oconee to Cherokee County on the morning of the 6th.								
Cameron, S.C. Orangeburg County	13	2300EST			0	0	4	0	High winds.
	High winds during a winter storm destroyed a hanger at the Cameron Airport.								
Coastal South Carolina	13-14				3	0	6	0	Coastal storm, high winds, high tides.
	A winter storm moved across northern Florida hence northeastward along the Carolina coast. Winds at Myrtle Beach, Springmaid pier, recorded at 47 mph from the northeast. A fishing trawler sank just outside the Georgetown Harbor killing 3 people. Heavy beach erosion occurred along S.C. coast with loss of one to two feet of sand. Erosion was heaviest along the northern S.C. coast.								
Eastern South Carolina	15-28				0	0	5	3	Flooding.
	Frequent rains pushed many coastal rivers to above flood stage during the last half of month continuing into March. Most significant flooding was along the Waccamaw River in Horry County where forty or more homes were flooded or cut off by flood waters. Also, considerable flooding on the Black, Lynches, Fee Dee, Edisto, and Santee Rivers and on the Black Creek near Florence.								

STORM DATA AND UNUSUAL WEATHER PHENOMENA

FEBRUARY 1963

PLACE	DATE	TIME - LOCAL STANDARD	LENGTH OF PATH (MILES)	WIDTH OF PATH (YARDS)	NO. OF PERSONS		ESTIMATED DAMAGE		CHARACTER OF STORM
					KILLED	INJURED	PROPERTY	CROPS	
— SOUTH CAROLINA									
Coastal South Carolina	27-28				0	0	6	0	High tides, coastal storm
	<p>South Carolina was on the south side of a strong high pressure ridge on Sunday, Feb. 27. This feature in combination with an intense low in the north central Gulf of Mexico brought a persistent easterly flow which caused considerable tidal flooding...beach erosion...and beach property damage. The astronomical tides were already quite high during this period and the strong easterly flow only aggravated the situation. Tides mostly 1 to 3 feet above normal were reported. The low in the Gulf of Mexico eventually moved inland but cyclogenesis occurred along the northeast Florida coast...and this strong low moved northeastward along the South Carolina coast on Monday night, Feb. 28. Below is the cumulative effects of erosion damage from this and earlier February storms. Most of the damage occurred to seawalls and revetments which were originally designed to protect private property from Hurricanes and storm-induced erosion. Damages to private property was generally worst near these structure and so was erosion scour. The storm damaged about 25 seawalls and other flood control structures in the Myrtle Beach area, according to a damage survey prepared by the Army Corps of Engineers. In addition, two residential structures were damaged. Also, between 8-10 feet of Myrtle Beach was eroded. In the Garden City-Folly Beach area, 18 seawalls and other flood control structures were damaged. In the Garden City-Folly Beach area, approximately 4-10 feet of beach area was eroded. At Fripp Island-Edisto Beach-Hunting Island, nine seawalls were damaged and 4-8 feet of beach was eroded, according to the survey. Beaufort County - water covered several island roads including one lane of U.S. 21. Water up to 8 inches deep near the VA Hospital in "Old Beaufort". At least one house was damaged on Edisto Beach.</p>								
39 SOUTH DAKOTA	NONE REPORTED								
40 TENNESSEE	NONE REPORTED								
41 TEXAS, Northern	NO REPORT RECEIVED								
41 TEXAS, Southern									
Travis County	9	0906CST			0	0	4	0	Hailstorm
	<p>3/4 inch hail was first reported in north Austin by the city police at 0906CST. As the storm moved eastward, 3/4 inch hail began to fall at the Austin Weather Service Office at 0918CST and continued for about 15 minutes. A citizen also reported damage to trees in north Austin at 0910CST due to strong gusts from the thunderstorm.</p>								
Fort Bend County	9	1100CST			0	0	0	0	Funnel
	<p>A funnel cloud was sighted very briefly just south of Rosenberg.</p>								
Fort Bend County	9	1100CST			0	0	0	0	Funnel
	<p>A funnel was sighted in northeastern Fort Bend County.</p>								
Brazos County	9	1101CST			0	0	0	0	Funnel
	<p>A funnel was sighted by FAA personnel at the airport (Easterwood Field) at College Station.</p>								
Walker County	9	1230CST	2	40	0	0	5	0	Tornado (F1)
	<p>A tornado touched down at New Waverly, about 50 miles north of Houston. It lifted a haybarn, damaging it and tossed pieces of the barn some 200 yards.</p>								
Walker County	9	1230CST			0	0	0	0	Funnel
	<p>A funnel cloud was sighted along U.S. 190, one mile east of Huntsville.</p>								
Harris County	9	1330CST	1.5	50	0	3	5	0	Tornado (F2)
	<p>Department of Public Safety officers reported power lines down and a carport damaged in southwest Houston. It touched down first near a residential area, but lifted quickly and caused no known damage. It touched down a second time, damaging a warehouse and taking the roof off three other warehouses.</p> <p>At the first warehouse, one man was injured when he was pinned between his pickup and a building and then tossed as the building was blown off its foundation. He remembered hearing a sound "like an explosion" along with the sound of wood ripping apart. Two other men were injured when the same tornado collapsed the roof at an office nearby. Seven other employees escaped injury by hiding in a back warehouse.</p>								
— TEXAS, Southern									
Harris County	9	1350CST	1	20	0	0	5	0	Tornado (F1)
	<p>The storm did minor damage to a lumbeyard but caused no injuries to the 70 employees and customers. Finally, before dissipating, it did minor damage to the roof of an elementary school. The students had already taken cover in halls and interior rooms and suffered no injuries.</p>								
Harris County	9	1410CST	1	20	0	0	4	0	Tornado (F1)
	<p>A tornado touched down in Pasadena in Harris County. It was reported by Civil Defense personnel and confirmed five minutes later by FAA personnel at Hobby Airport. It damaged roofs, fences, traffic lights and a telephone pole along with two portable trailers used by a construction company before lifting and dissipating.</p>								
Walker County	9	1415CST	.5	20	0	0	0	0	Tornado (F0)
	<p>A tornado touched down briefly in a peanut field near Huntsville. No known damage was done.</p>								
San Jacinto County	9	Aftn	.5	30	0	0	5	0	Tornado (F1)
	<p>A tornado touched down near Coldspring, in San Jacinto County, sometime in the early afternoon of the 9th. It ripped billboards, tore trees apart, and damaged one home. The tornado was seen by several members of the public as it crossed S.H. 156, struck telephone poles and trees, tossing them on the house, then quickly dissipated.</p>								
Brazoria County	9	1425CST	8	50	0	0	4	0	Tornado (F2)
	<p>Civil Defense personnel reported a tornado touched down just north of Manvel, damaging two carports and several trees. The tornado destroyed a carport at a residence near FM 1128, just north of Manvel. The owner of the residence had been standing under the carport and, seeing the tornado, had run into the house. Pieces of the carport were tossed around for several blocks. A second carport was damaged just a few moments later. The tornado finally dissipated near Pearland, about 8 miles to the northeast of Manvel.</p>								
Orange, Jefferson Counties	9	1530CST			0	0	3	0	Tstm winds
	<p>A severe thunderstorm produced heavy rain and winds to 55 mph. The rain and wind was reported at the Beaumont Municipal Airport.</p>								
Victoria County	20	1530CST			0	0	0	0	Funnel Cloud
	<p>The public reported a funnel 3 miles east of Mission Valley. It was short-lived.</p>								
Cameron, Willacy, Hidalgo Counties	25	1645CST 1800CST			0	0	4	?	Hailstorm Flooding
	<p>Thunderstorms, forming along a cold front that had moved south-eastward into the Rio Grande Valley, produced heavy rains averaging 4 to 5 inches in a two-hour period across Cameron, Willacy and Hidalgo Counties. Isolated amounts in excess of 8 inches were reported, with heaviest amounts in eastern Hidalgo and western Cameron Counties. Approximately 100 families reported water in their homes after the storm. Power was out in several locations, and low lying areas were flooded over much of the three-county area. Noted among the roads with the worst flooding were FM 490, FM681 just west of Edinburg, FM 907 north of Pharr, FM 494 near Sugar Road, and portions of U.S. 83 near LaFeria.</p> <p>Hail as large as hen eggs was reported near LaFeria about 1645CST, with numerous reports of pea to marble-sized hail over the three counties.</p>								
41 TEXAS, Western									
Panhandle	01				0	0	?	?	Drifting Snow
	<p>Heavy drifting snow that fell over the Texas Panhandle on January 31st continued into the 1st of February. By 8 a.m. drifts of 4 to 6 feet covered the North Central and Northwest Texas Panhandle and 3 to 4 feet drifts over the Southern Panhandle. Numerous travelers were stranded on Highway 287 at Dumas and Dalhart; even snow plows were stuck. Most schools throughout the Panhandle were closed, mail deliveries in Amarillo and other areas were cancelled. By early afternoon one lane was open on I-40 and 287 north of Dumas and Amarillo International Airport was opened.</p>								

STORM DATA AND UNUSUAL WEATHER PHENOMENA

FEBRUARY 1983

PLACE	DATE	TIME - LOCAL STANDARD	LENGTH OF PATH (MILES)	WIDTH OF PATH (YARDS)	NO. OF PERSONS		ESTIMATED ¹ DAMAGE		CHARACTER OF STORM
					KILLED	INJURED	PROPERTY	CROPS	
TEXAS, Western									
Panhandle	03-04	Much of the time			0	0	?	?	Heavy Snow
	<p>Snow begin falling over the entire Texas Panhandle on the morning of the 3rd and continued through the early afternoon on the 4th. Additional accumulations of from 10 inches in the west to 4 inches in the southeast Texas Panhandle brought travel to a crawl. Snow on the ground in Amarillo on the 4th totaled 14 inches while both Dumas and Borger measured 15 inches. The 14 inches in Amarillo was the greatest snow depth since the winter of 1931-32. The heavy snow cover that persisted over the first couple of weeks in February was on the whole beneficial to the winter wheat; however, heavy damage was sustained by highways and roads, and losses to cattle was estimated at one percent; mostly feedlot feeders.</p>								
South Plains	19	Late morning & afternoon			0	0	?	?	Duststorm
	<p>A brief but energetic duststorm hit the South Plains with winds gusting to near 60 mph. This being the first duststorm of the season produced some inconveniences; but, to our knowledge, no significant damage or injuries.</p>								
Panhandle	20	Morning			0	0	?	?	Heavy Snow
	<p>On the morning of the 20th a thunderstorm dumped a swath of heavy snow from Panhandle, northeast of Amarillo, to Pampa. Seven inches of snow fell at Pampa and 10 inches between Panhandle and White Deer. Highway 60 was closed for several hours until one lane was opened in mid-afternoon.</p>								
42 UTAH									
Beaver, Iron, Washington, Kane, and Salt Lake Counties	18	1300 to 1900 MST			0	3	6	0	Wind Storm
	<p>Damaging winds struck western Utah and the Lake Powell area during the afternoon and evening of Friday the 18th. The hurricane force winds associated with a strong cold front, were possibly enhanced by thundershower activity and local topography. The cold front moved from Nevada into western Utah and northern Arizona. No one was killed by the storm, but three persons were injured, one in Washington county and two others in the Lake Powell area. By 1:00 PM Milford WSO and Cedar City FSS were reporting gusts to 70 MPH. By 3:00 PM Milford WSO was reporting winds to 75 MPH and Utah highway 257 was closed due to blowing dust. Between 3:00 and 4:00 PM the cold front had passed the Salt Lake Airport with a gust of 55 MPH and a bank window was blown out. However the most damage was occurring in the Enterprise area as most of the overhead irrigation systems were destroyed. One deputy sheriff reported that they were "ried into knots". At 4:00 PM the peak gust of 77 MPH was recored at the Milford WSO. Between 4:30 and 5:00 the strongest winds were observed at Cedar City and St. George. Cedar FSS recorded a peak gust of 75 mph and winds at St. George were estimated at 80 MPH. It was at this time that the 300 foot KSUB radio tower in Cedar City was blown over. Also considerable damage was taking place in St. George. Trees were uprooted, roofs blown off houses, andand many commercial signs destroyed along St. George Blvd. At the St. George Airport, as many as a dozen aircraft were damaged. All of these had been tied down. Eight were considered unsrworthy and two probably were totally destroyed. Some hangar doors were blown off and one was carried over 1/4 mile from the airport. At 5:10 a semi-truck was blown over in Parowan with trees uprooted in that area. Power lines in Kanab were blown down during this time. Between 6:00 and 7:00 PM the damaging winds moved into the Lake Powell area. The cold front passed the Bullfrog Marina at 6:50 PM with winds of 20 to 30 MPH. KPGE radio in Page Arizona estimated winds to 80 MPH with a thunderstorm, the Page (PCA) RAMOS automatic station recorded a gust to 56 MPH on the 6:39 poll, and an anemometer at the highschool in Page recorded an unofficial 97 MPH gust. Many boats were damaged at the Wahweay Marina at Lake Powell and planes damaged at the Page, AZ. Airport. One report indicated an aluminum rowboat lodged 12 feet high in a tree. A preliminary estimate of total damage from the storm was 4.3 million dollars.</p>								
43 VERMONT									
Statewide	3	AM			0	0	5	0	Rain
	<p>Steadily rising temperatures and rain produced scattered local flooding throughout the State of Vermont. The worst damage occurred along the Sleeper's River. This was the result of an ice jam and melting snow and rain.</p>								
Statewide	6	PM			0	3	5	0	Snow
	<p>Heavy snow fell over Vermont..up to a foot around Mount Snow. Gusty winds of up to 35 MPH caused some drifting in open areas. No major problems resulted from the storm.</p>								
44 VIRGINIA									
Statewide	6-7	All Day			0	0	0	0	Snow
	<p>Low pressure moved northeastward out of the eastern Gulf of Mexico bringing locally heavy snow. Amounts of 3 to 5 inches were prevalent, with up to 6 to 8 inches over higher elevations in Wythe and Grayson Counties, and along the east slopes of the Blue Ridge Mountains. In the eastern sections snow became mixed with sleet and rain, or changed entirely to rain.</p>								
Statewide	10-12				34	6	0	0	Snow, Wind
	<p>An intense low pressure center moved northeastward along the south-eastern and mid-Atlantic coastal region, bringing the heaviest snowfall in 40 years to much of the state. Some communities reported the most snow ever measured. Snow began early on the 10th over the western counties..while over the southeast portion around 2 inches fell before mixing with or changing to rain early on the 11th, changing back to snow before ending shortly after midnight of the 12th. The state was paralyzed for a time due to widespread 12 to 20 inches of snow. Luray and Woodstock, in the Shenandoah Valley each reported 32 inches. In the meantime, over 2 inches of rain brought some local flooding. An elderly New Kent County woman died from apparent hypothermia...while off Chincoteague, a freighter capsized and sank in heavy seas early on the 12th, with the loss of 33 out of a crew of 36 men. An undetermined number of people were treated for falls, auto accident and other storm related injuries..including many who were hurt while operating snow-blower machines. Widespread property damage included structural failure of roofs of sheds, buildings and greenhouses due to the weight of collected snow...including a large cow barn that collapsed in Lunenburg County.</p>								
45 WASHINGTON ————— NONE REPORTED									
46 WEST VIRGINIA									
South Charleston	02	1910EST			0	0	?	0	Hail
	<p>One-half inch hail was reported with no report of damage or injuries. Heavy thunderstorms were across the western half and the north central portions of West Virginia.</p>								
Wheeling	02	2240EST			0	0	?	0	Stream Flooding
	<p>Heavy thunderstorms from the same system caused rapid water rises and a mudslide along Route 2 near Wheeling.</p>								
Southern and eastern West Virginia	11	All Day			3	0	?	0	Heavy Snow
	<p>The storm hit southwest sections of the state then moved northeastward as a coastal. Charleston by 7 AM had 8 inches. Snow piled up fast in the eastern panhandle and the potomac highlands with 1-2 feet common by 5 PM. By 7:30PM Glen Gary had 35 inches in Berkeley County. Other totals Shepherdstown 32 inches. Charlestown 27 inches and Martinsburg 26 inches. Martinsburg set a new 24 hour record for snowfall along with Charlestown. Needless to say many motorists were left stranded on roadways due to near blizzard conditions. Numerous power outages and downed power lines. One person was found dead in his car in Martinsburg. Two Morgan County residents were asphyxiated after their 4-wheel drive vehicle became stuck in up to 2 feet of snow near Paw Paw.</p>								

STORM DATA AND UNUSUAL WEATHER PHENOMENA

FEBRUARY 1983

PLACE	DATE	TIME - LOCAL STANDARD	LENGTH OF PATH (MILES)	WIDTH OF PATH (YARDS)	NO. OF PERSONS		ESTIMATED ¹ DAMAGE		CHARACTER OF STORM
					KILLED	INJURED	PROPERTY	CROPS	
47 WISCONSIN									
Statewide	1-2	Evening into the following day			0	0	?	0	Freezing rain, snow, wind
<p>Up to 1/2 inch of glaze ice from freezing rain in southern Wisconsin fell from the evening of the 1st through the morning hours of the 2nd. Freezing rain and sleet turned to all snow by noon on the 2nd and a major winter snowstorm continued for the remainder of the day. 8 to 12 inches fell across much of the state on the 2nd with heaviest accumulations in the west central counties of Jackson, Trempealeau, Monroe, Buffalo and LaCrosse. The heavy snow accumulations were responsible for the collapse of two roofs on commercial buildings in Spencer and Marshfield. The snowstorm also caused numerous auto and truck accidents. Ice-coated wires and strong winds snapped many power lines knocking out power to thousands of customers in the southern third of Wisconsin.</p>									
48 WYOMING ————— NONE REPORTED									
49 ALASKA, Northern									
Arctic Coast	5-7	2000-2000AST			0	0	?	0	High Wind
<p>A prolonged period of strong east winds on the eastern Arctic coast caused occasional blizzard conditions. Peak wind was 58 mph at Prudhoe Bay 0700AST, Feb. 6.</p>									
49 ALASKA, Southern ————— NONE REPORTED									
49 ALASKA, Southeastern ————— NONE REPORTED									
50 HAWAII									
Oahu	10-11				0	4	4	0	High Surf
<p>Some of the highest northwesterly surf in a number of years caused road and property damage along the Oahu north shore. Surf heights estimated as high as 35 feet. Four people injured as car was swept off the road by high waves. 900 persons evacuated as a precautionary measure. Also minor damage along north and west shores of other islands.</p>									
Oahu	16-17				0	0	3	0	High Surf
<p>Surf in the 25 to 30 foot range along north and west shores. A small boat with 2 persons aboard overturned outside Haleiwa Harbor at 8 PM on the 16th. Both persons rescued.</p>									
Oahu	27-28				0	0	5	0	High Surf
<p>Persistent high northwesterly surf during the entire month of February caused extensive beach erosion. An exposed section of Farrington Highway north of Makaha became undermined by the pounding of 15 to 20 foot surf at the time of high astronomical tides. A beach house at Makaha also destroyed by wave action.</p>									
51 PUERTO RICO ————— NONE REPORTED									
52 VIRGIN ISLANDS ————— NONE REPORTED									
53 PACIFIC ————— NONE REPORTED									

STORM SUMMARY

FEBRUARY 1983

STATE	TORNADOES					HAILSTORMS			WINDSTORMS				LIGHTNING				FLOODING				HEAVY SNOWSTORMS AND BLIZZARDS			# ICE STORMS				ALL OTHER		
	NUMBER	DAYS	DEATHS	INJURIES	† DAMAGE	DEATHS	INJURIES	†DAMAGE		DEATHS	INJURIES	†DAMAGE		DEATHS	INJURIES	†DAMAGE		DEATHS	INJURIES	†DAMAGE		DEATHS	INJURIES	†DAMAGE		DEATHS	INJURIES	†DAMAGE		
								PROP. ERTY	CROPS			PROP. ERTY	CROPS			PROP. ERTY	CROPS			PROP. ERTY	CROPS			PROP. ERTY	CROPS			PROP. ERTY	CROPS	
Alabama	5	3		3	6		?	?			5			5			?													
Arizona																														
Arkansas																													2	
California	1	1			5					3	6	5		5			2	7	6									5		
Colorado											5																			
Connecticut																														
Delaware											5									2	?	5								
Florida	21	3	2	26	7				1	6	5			3												1		4		
Georgia	3	1		3	5						4					4														
Idaho																														
Illinois																														
Indiana																														
Iowa																			1	4	4					4				
Kansas																														
Kentucky																														
Louisiana	3	2		7	6				1		5			4																
Maine											4																			
Maryland & DC											5																			
Massachusetts																														
Michigan																														
Minnesota																														
Mississippi	1	1		3	5					1	5					4														
Missouri																														
Montana																														
Nebraska																														
Nevada											5																			
New Hampshire																				1		4								
New Jersey																						?								
New Mexico																														
New York										3	4											3	6	52	9	?	?	?	4	
North Carolina														5																
North Dakota																														
Ohio																														
Oklahoma																														
Oregon	≠																													
Pennsylvania																														
Rhode Island																														
South Carolina										3	4																			
South Dakota																														
Tennessee																														
Texas	≠																													
Utah										3	6																			
Vermont																														
Virginia										33	5																			
Washington																														
West Virginia																														
Wisconsin											2																			
Wyoming																														
Alaska																														
Hawaii																														
Pacific																														
Puerto Rico																														
Virgin Islands																														

REFERENCE NOTES

Storm damage categories are from 1 to 9 as follows:

- 1 Less than \$50
- 2 \$50 to \$500
- 3 \$500 to \$5,000
- 4 \$5,000 to \$50,000
- 5 \$50,000 to \$500,000
- 6 \$500,000 to \$5 Million
- 7 \$5 Million to \$50 Million
- 8 \$50 Million to \$500 Million
- 9 \$500 Million to \$5 Billion

- * Miles instead of yards
- ** Yards instead of miles
- @ Includes heavy sleet storm
- # Freezing drizzle and freezing rain, commonly known as glaze
- ≠ Not received or incomplete
- o/c Under Estimated Damage, Property/Crops, indicates crop damage amount is included in the figure given

Definition of Fujita Tornado Scale (F scale)

(F0) Gale tornado (40-72 mph): Light damage
Some damage to chimneys; break branches off trees; push over shallow-rooted trees; damage sign boards.

(F1) Moderate tornado (73-112 mph): Moderate damage
The lower limit (73 mph) is the beginning of hurricane wind speed; peel surface off roofs; mobile homes pushed off foundations or overturned; moving autos pushed off the roads.

(F2) Significant tornado (113-157 mph): Considerable damage
Roofs torn off frame houses; mobile homes demolished; boxcars pushed over; large trees snapped or uprooted; light-object missiles generated.

(F3) Severe tornado (158-206 mph): Severe damage
Roofs and some walls torn off well-constructed houses; trains overturned; most trees in forest uprooted; heavy cars lifted off ground and thrown.

(F4) Devastating tornado (207-260 mph): Devastating damage
Well-constructed houses leveled; structure with weak foundation blown off some distance; cars thrown and large missiles generated.

(F5) Incredible tornado (261-318 mph): Incredible damage
Strong frame houses lifted off foundations and carried considerable distance to disintegrate; automobile-sized missiles fly through the air in excess of 100 m; trees debarked; incredible phenomena will occur.

(F6-F12) (319 mph to Mach 1, the speed of sound):
The maximum wind speeds of tornadoes are not expected to reach the F6 wind speeds.

(F0+F1) *Weak Tornado*
(F2+F3) *Strong Tornado*
(F4+F5) *Violent Tornado*

From J. Atmos. Sci., August 1981, p. 1517-1519



USCOMM-NOAA-ASHEVILLE, NC 1983-3050