

OCTOBER 1982

VOLUME 24

NUMBER 10

STORM DATA



"I CERTIFY THAT THIS IS AN OFFICIAL PUBLICATION OF THE
NATIONAL OCEANIC AND ATMOSPHERIC ADMINISTRATION
AND IS COMPILED FROM INFORMATION RECEIVED AT THE
NATIONAL CLIMATIC DATA CENTER, ASHEVILLE, N.C. 28801"

L. Ray Hoxit
ACTING DIRECTOR

NATIONAL CLIMATIC DATA CENTER

10aa

NATIONAL OCEANIC AND
ATMOSPHERIC ADMINISTRATION

/ NATIONAL ENVIRONMENTAL SATELLITE,
DATA, AND INFORMATION SERVICE

/ NATIONAL CLIMATIC DATA CENTER
ASHEVILLE, N.C.

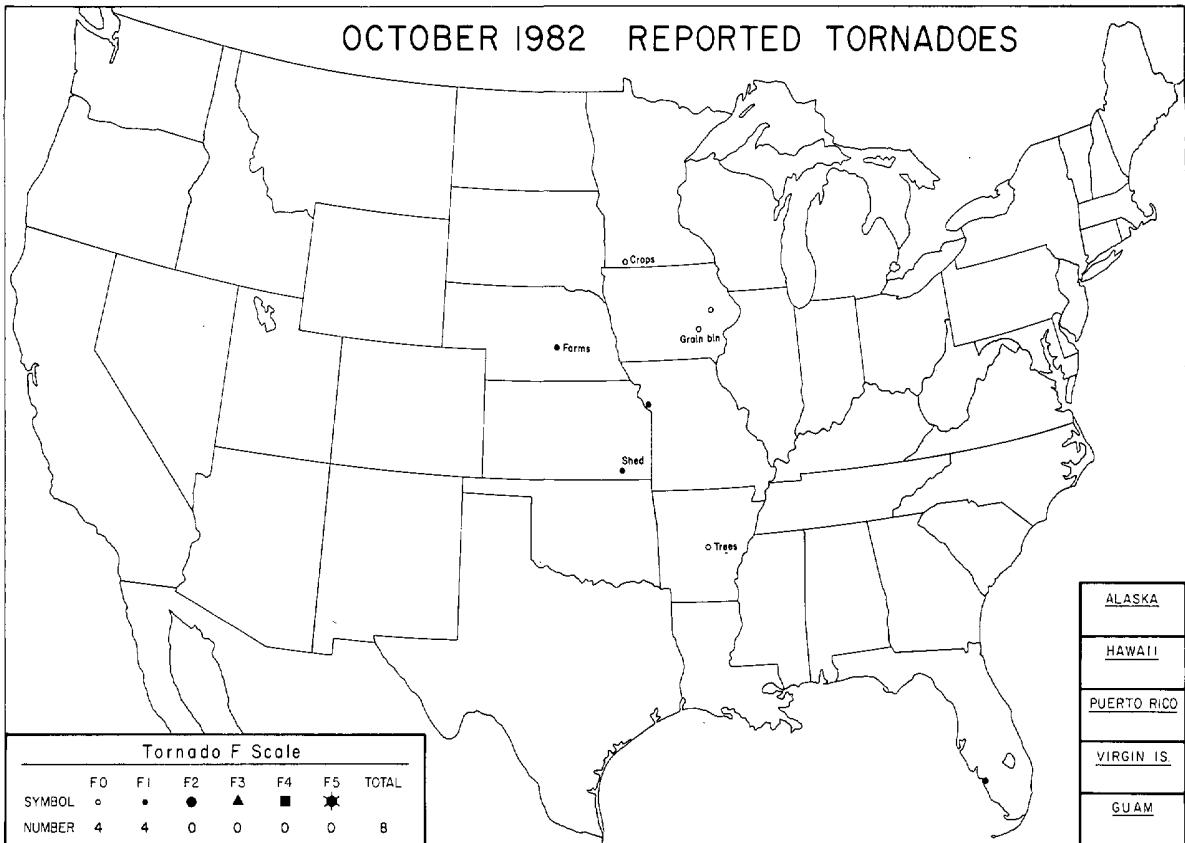
C O N T E N T S

	Page
Outstanding Storms of the Month.	3
Storm Data and Unusual Weather Phenomena	10
Storm Summary.	17
Late Reports and Corrections	18
Reference Notes.	29
"F" Scale Definitions.	29

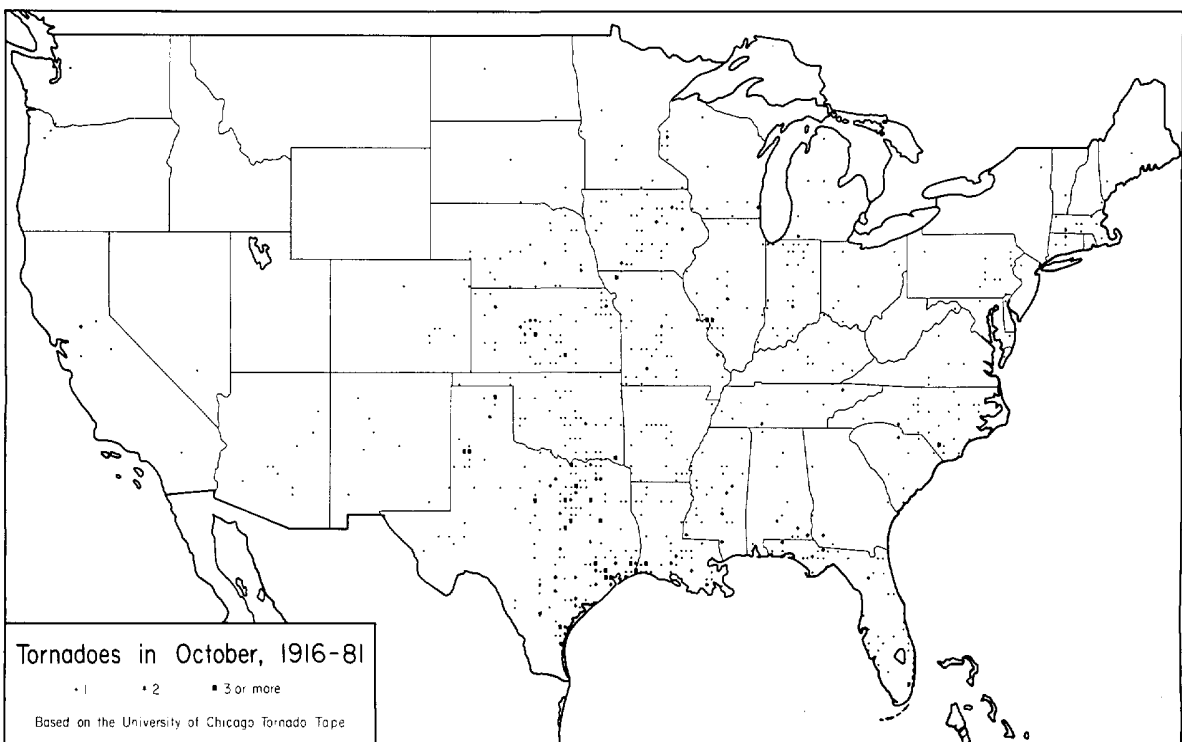
NOTE: The section on Outstanding Storms of the Month is prepared and edited by Professor T. Theodore Fujita, University of Chicago. The narrative descriptions of Storms by State and Summaries of Hurricanes and Tropical Storms are prepared by the National Weather Service. The National Climatic Data Center compiles the statistics on deaths, injuries, and damage. This publication contains our best information on storms, but, due to the difficulties inherent in collection of this type of data, it is not all-inclusive. Late Reports and Corrections will be carried quarterly.

STORM DATA - (ISSN 0039-1972) is published monthly. Subscription, pricing, and ordering information is available from: Publications Section (E/CC413), The National Climatic Data Center, National Environmental Satellite, Data, and Information Service, NOAA, Federal Building, Asheville, NC 28801-2696.

OUTSTANDING STORMS OF THE MONTH

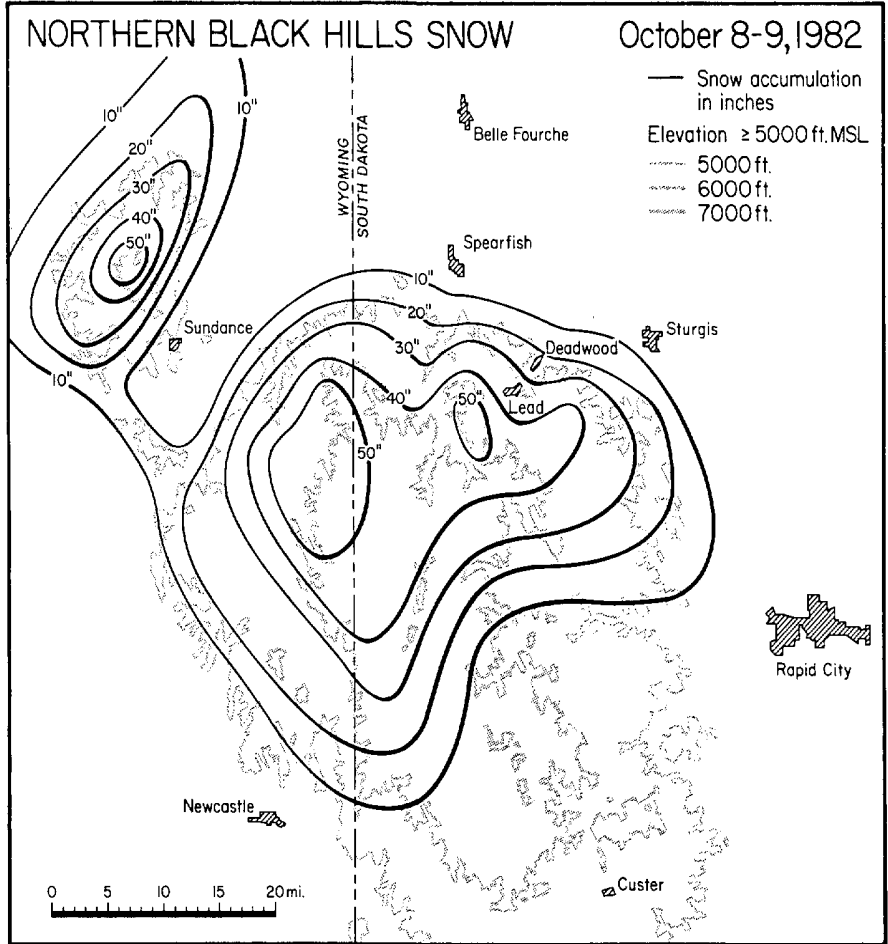


● TYPED REPORT RECEIVED	◐ PRELIMINARY REPORT RECEIVED	○ NO REPORT RECEIVED	(N) northern (S) southern	(E) eastern (W) western	(C) central (O) coastal						
● 1AL	● 5CO	● 10ID	● 15KY	● 20MI	● 25NE	● 30NY(O)	● 33QH	● 37RI	● 41TX(S)	● 45WA	● 50HI
● 2AZ	● 6CT	● 11IL	○ 16LA	● 21MN	● 26NV	● 30NY(C)	● 34OK	● 38SC	● 41TX(W)	● 46WV	● 51PR
● 3AR	● 7DE	● 12IN	○ 17ME	● 22MS	○ 27NH	● 30NY(W)	○ 35OR	● 39SD	● 42UT	● 47WI	● 52VI
● 4CA(N)	● 8FL	● 13IA	● 18MD	● 23MO	● 28NJ	● 31NC	● 36PA(E)	● 40TN	● 43VT	● 48WY	● 53GU
● 4CA(S)	● 9GA	● 14KS	● 19MA	● 24MT	● 29NM	● 32ND	● 36PA(W)	● 41TX(N)	● 44VA	● 49AK	



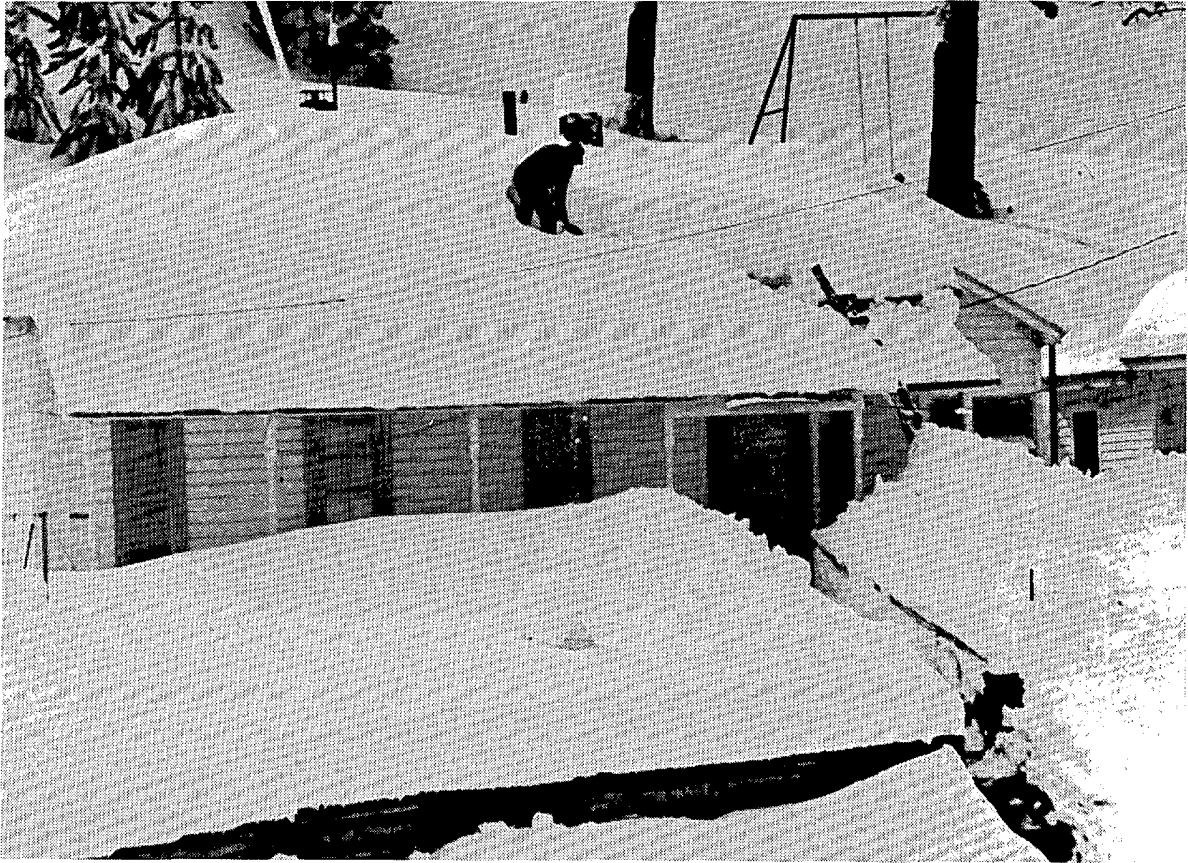
1. SNOW in the NORTHERN BLACK HILLS on October 8-9, 1982

An unusually early and very heavy snow fell over the northern Black Hills on October 8th and 9th. The total snow accumulation for the storm, mapped below, shows that the distribution of snowfall was very dependent on topography and the strong northwest winds which accompanied the storm. Up to 54 inches of snow was measured in the hills while Rapid City had only a trace. ---Map by NWSFO Sioux Falls, South Dakota.

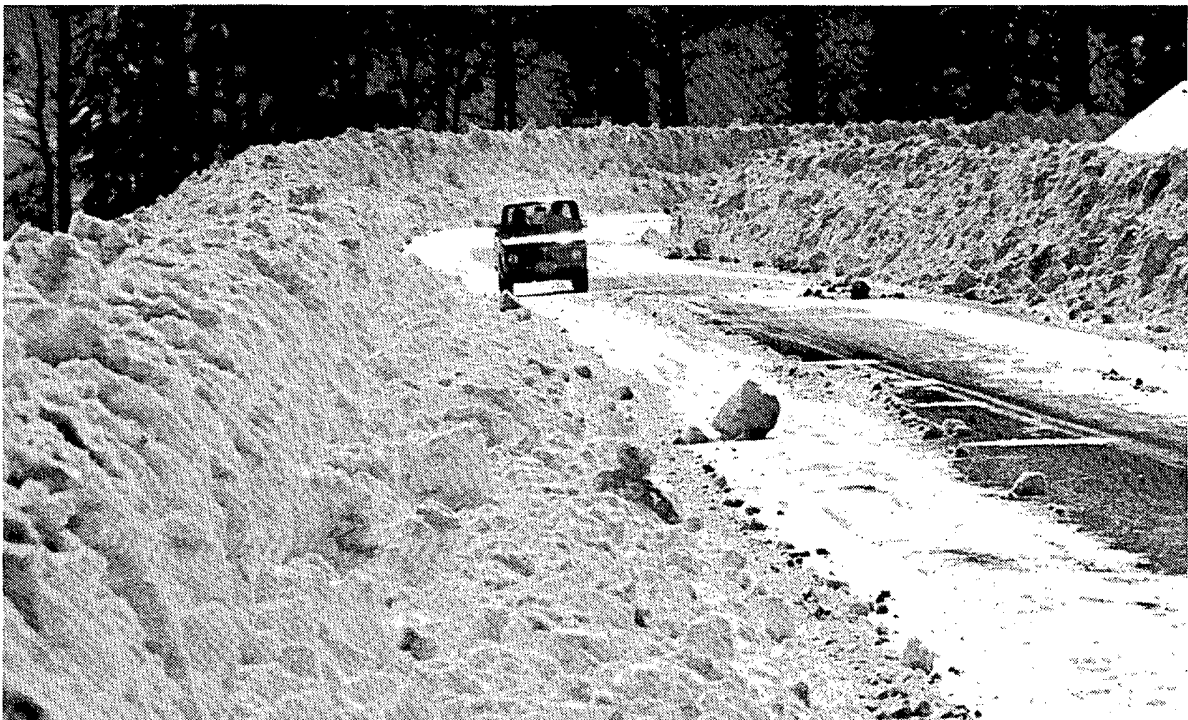


The photos above, taken on October 9th, show that the best way to travel during the storm was on foot. At left, the main street of Lead with only one narrow lane plowed for traffic. Lead received 36 inches. At right, a man carries home milk and bread through the blowing snow.

NORTHERN BLACK HILLS SNOW ---- Continued



A man begins to shovel about 3 feet of snow from the roof of his home near Lead on October 10th, the day after the storm. Some roofs in the area collapsed under the weight of the wet snow.

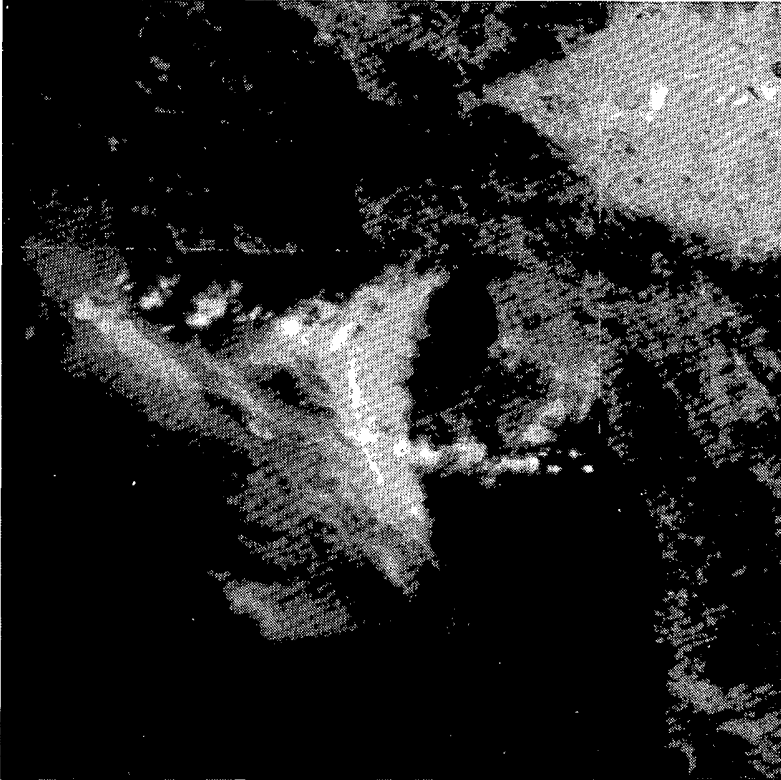


A small pickup truck is dwarfed by walls of snow which were created by plows during the cleanup. The location is U.S. Highway 85 about 10 miles southwest of Lead, South Dakota.

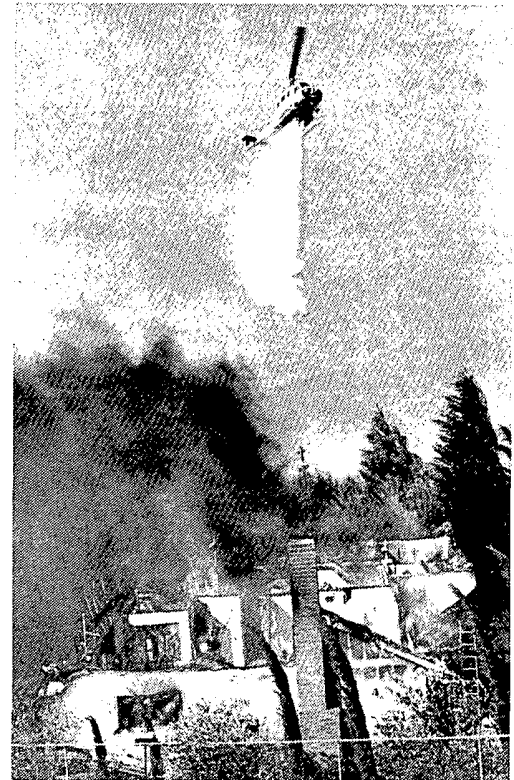
---All photos by Donald G. Polovich, The Rapid City Journal.

2. WIND-DRIVEN FIRES in CALIFORNIA on October 9, 1982

In the Los Angeles area on October 9th, two areas of destruction resulted from fires which were driven by 60 mph Santa Ana winds. The northeasterly winds caused one fire northwest of Los Angeles to travel 15 miles from Dayton Canyon to Paradise Cove, burning 36 homes and 41 mobile homes along the way. The second fire occurred southeast of Los Angeles destroying 20 homes in Gypsum Canyon, Anaheim Hills and Orange.



Plumes of smoke drifting southwestward from the two fires are seen becoming diffused by winds over the Pacific Ocean in this satellite picture taken at 1424 PST on October 9th. ---Photo supplied by NWSFO Los Angeles, California.

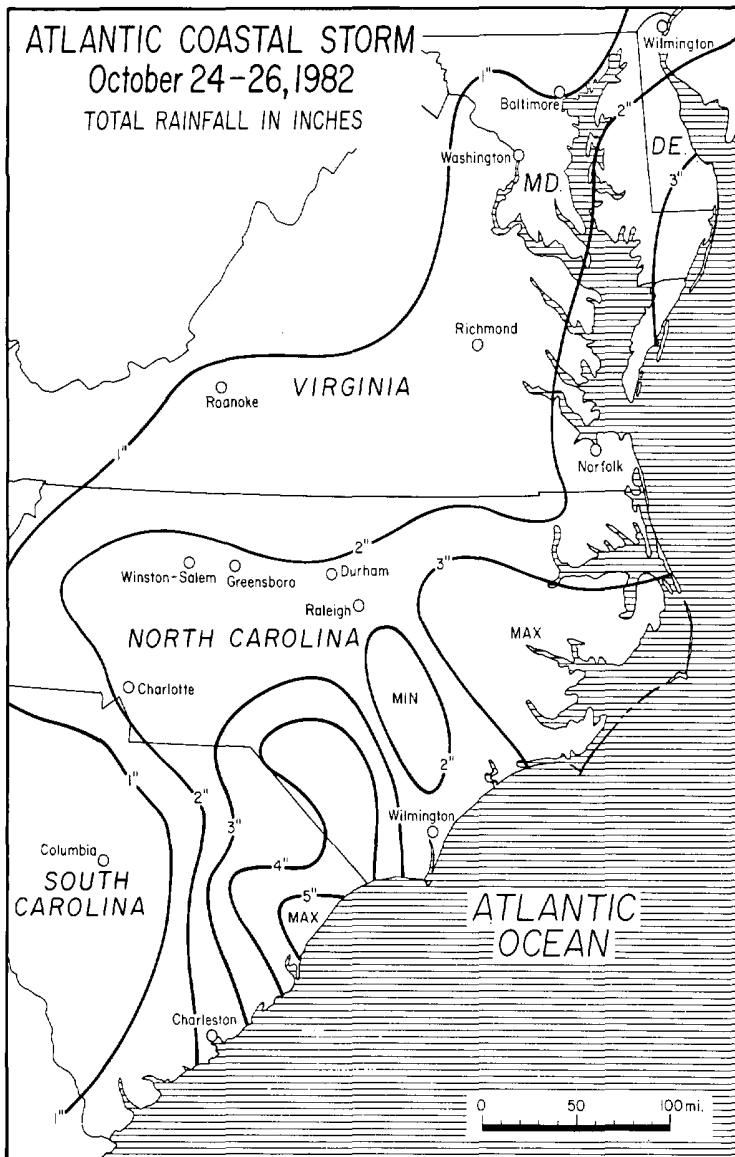


A helicopter drops water on burning homes in Dayton Canyon. ---Photo by Mike Meadows, The Los Angeles Times.



An aerial view of burned homes in the Crest de Ville subdivision of Orange. ---Photo by Larry Armstrong, The Los Angeles Times.

3. ATLANTIC COASTAL STORM on October 24-26, 1982

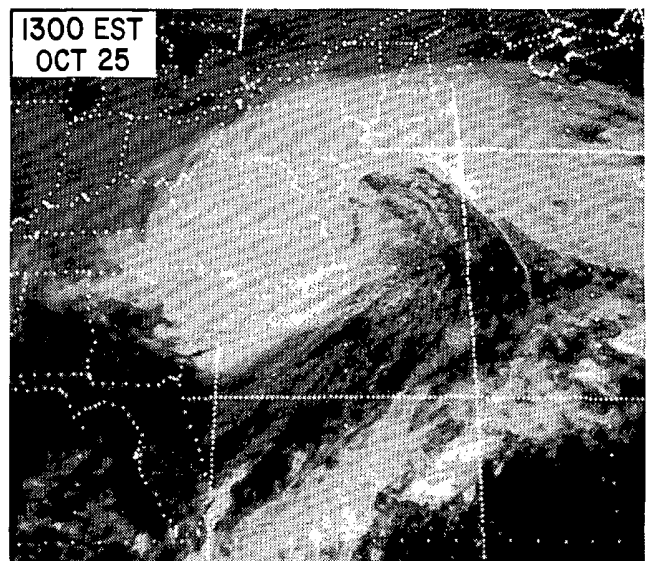
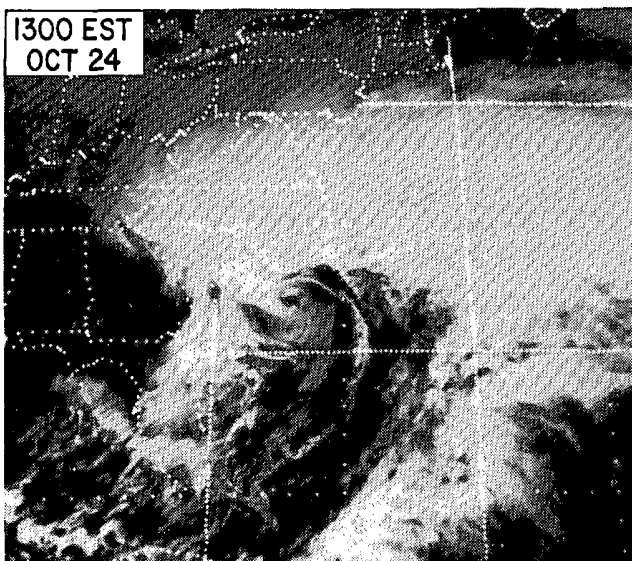


An early season, coastal storm brought high winds and heavy rains to a large portion of the eastern seaboard on October 24th to 26th. The northward moving storm also produced high tides and wave action which resulted in widespread beach erosion and some structural damage.

The rainfall, mapped at left, was the heaviest in the eastern halves of the Carolinas, with Brookgreen Gardens, South Carolina having received the highest recorded rainfall of 5.96 inches.

Winds from the storm exceeded 50 mph at many inland stations and reached hurricane strength offshore.

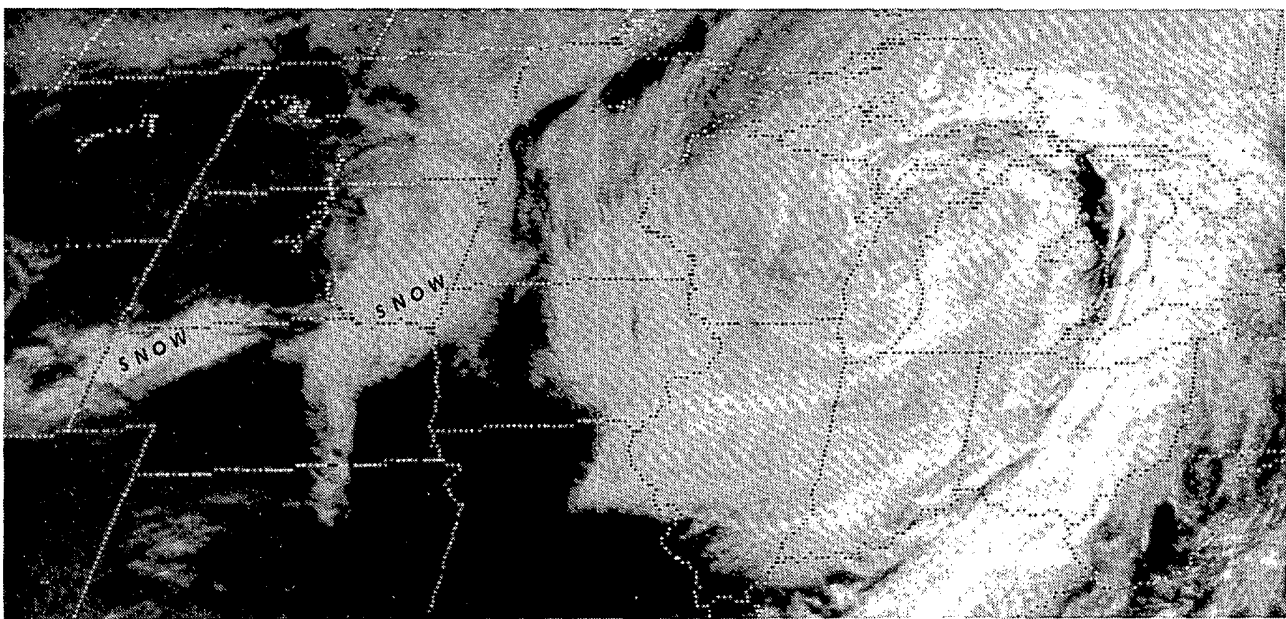
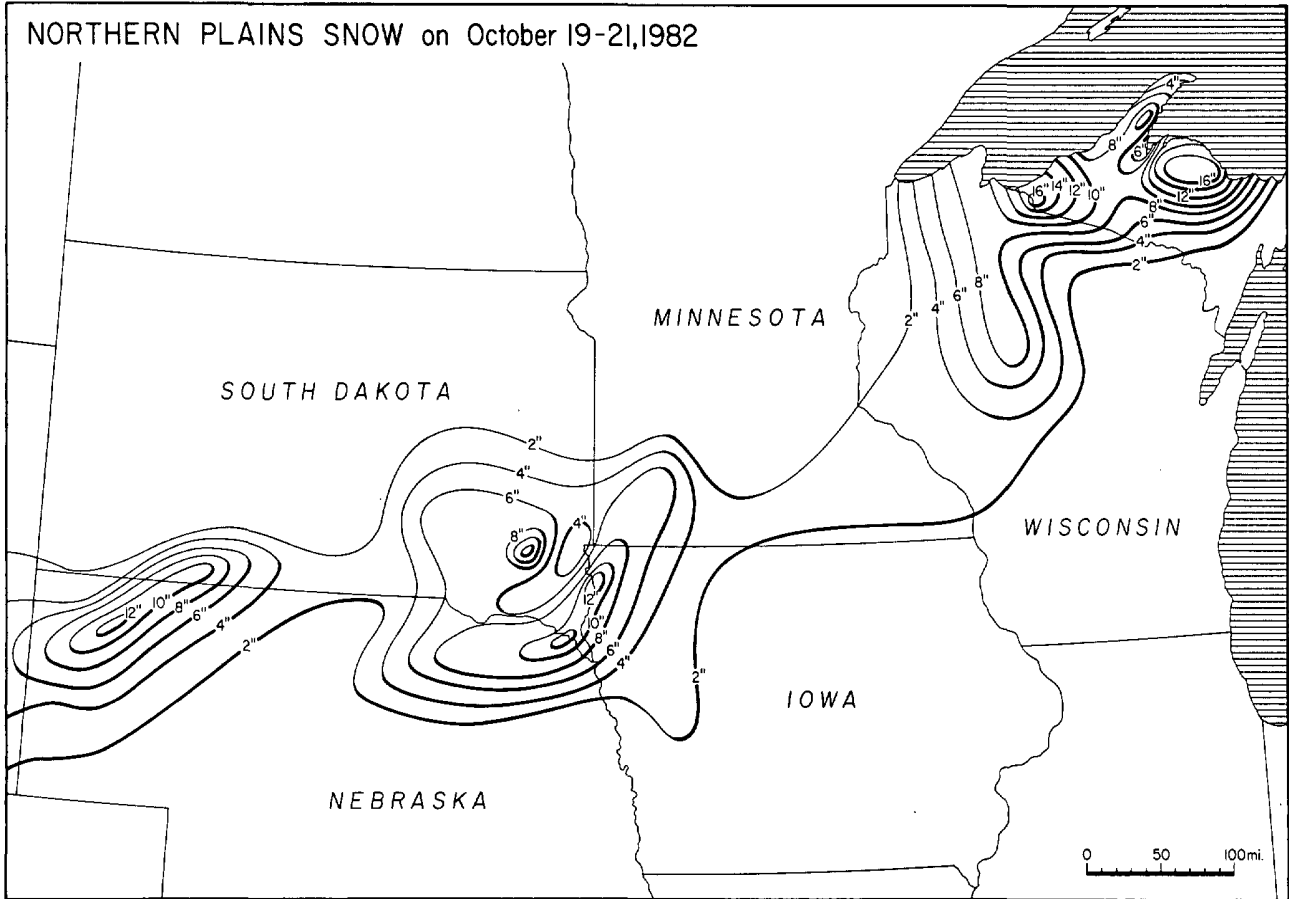
---Rainfall data supplied by NWSFO Washington, D.C.; the North Carolina State Climatologist Office, Raleigh; and the South Carolina Water Resources Commission, Columbia.



Visible satellite pictures above show the swirling cloud mass of the storm with an almost hurricane-like eye off the coast of South Carolina (left), and with the center positioned off the coast of Virginia 24 hours later (right). ---Photos from NESS.

4. SNOWSTORM over the NORTHERN PLAIN STATES on October 19-21, 1982

A mid-latitude cyclone caused a heavy, wet snow, mapped below, to fall over three areas of the northern plain states on October 19th to 21st. The two western areas had embedded thunderstorms which accounted for locally heavy amounts, whereas the snow over northern Wisconsin and the upper peninsula of Michigan was enhanced by lake effect from Lake Superior. ---Data supplied by NWSFO's at Ann Arbor, Michigan; Minneapolis, Minnesota; Omaha, Nebraska; Sioux Falls, South Dakota; and Milwaukee, Wisconsin.



This visible satellite picture was taken at 1000 CST, October 20th while the heavy snow over the southern shores of Lake Superior was in progress. The snowfall area over the Nebraska Panhandle is clearly visible (left edge). ---Photo from NESS.

5. LIGHTNING in WISCONSIN on October 19, 1982

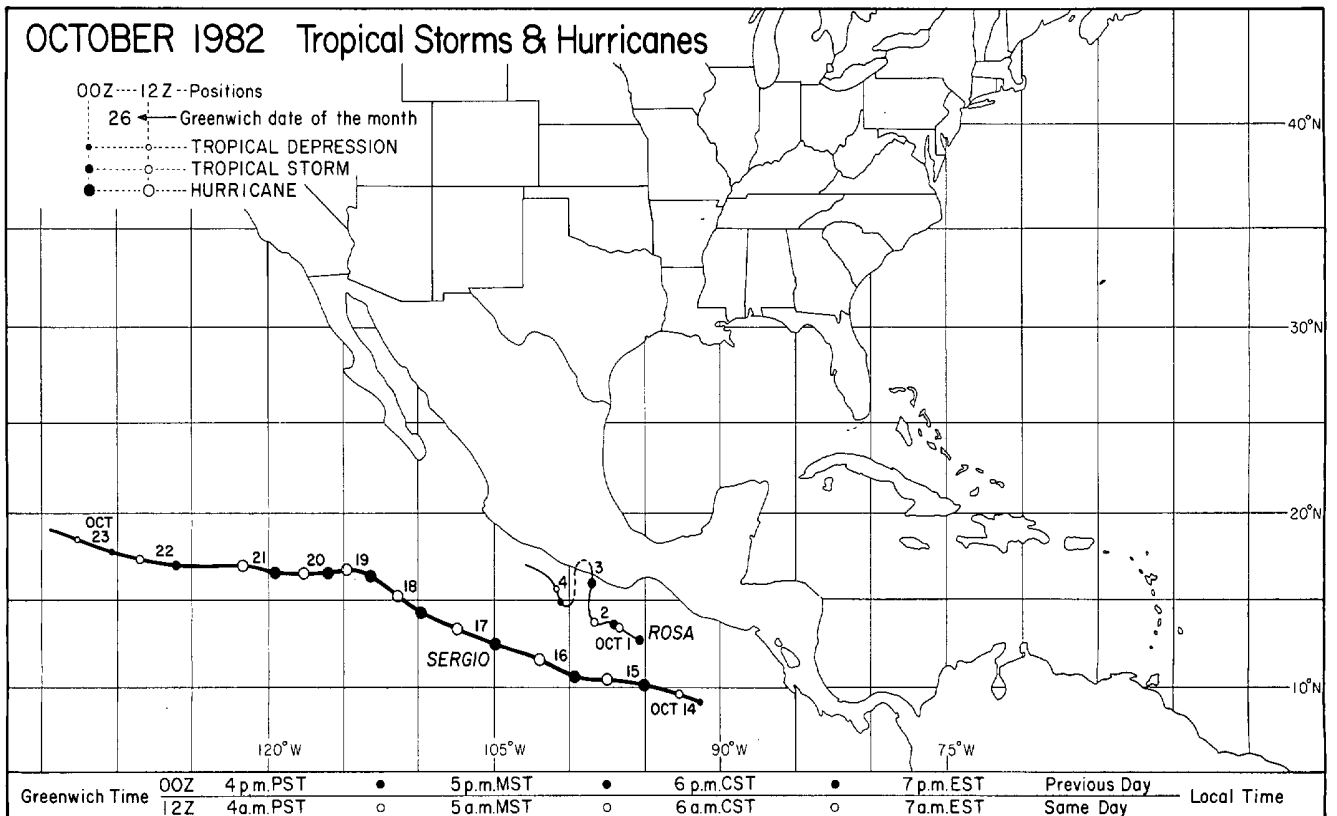


In the early morning of October 19th, thunderstorms in the southeastern quarter of Wisconsin produced numerous lightning strikes which damaged property, started fires, and downed power lines.

At left, the Delevan Chief of Police points to the distinct path which lightning took down the side of a house. The house was destroyed in the ensuing fire.

---Photo by the Delevan Enterprise. Supplied by Crispin Garcia, Jr., NWSFO Milwaukee, Wisconsin.

TROPICAL STORMS AND HURRICANES



STORM DATA AND UNUSUAL WEATHER PHENOMENA

OCTOBER 1982

PLACE	DATE	TIME - LOCAL STANDARD	LENGTH OF PATH (MILES)	WIDTH OF PATH (YARDS)	NO. OF PERSONS		ESTIMATED* DAMAGE		CHARACTER OF STORM
					KILLED	INJURED	PROPERTY	CROPS	

PLACE	DATE	TIME - LOCAL STANDARD	LENGTH OF PATH (MILES)	WIDTH OF PATH (YARDS)	NO. OF PERSONS		ESTIMATED* DAMAGE		CHARACTER OF STORM
					KILLED	INJURED	PROPERTY	CROPS	

1 ALABAMA ————— NONE REPORTED

2 ARIZONA ————— NONE REPORTED

3 ARKANSAS

Garland County	06 1800CST	-	-	0	0	?	-	Lightning	An electrical storm knocked insulation off power poles in Hot Springs causing loss of power for about two hours to 1500 customers.
Pulaski County	08 about 1700CST	440	20	0	0	3	-	Tornado (F0)	Unusual tropical conditions produced a brief tornado out of cumulus congestus cloud in Little Rock. The roof of one house was damaged, as well as several trees uprooted.
Baxter County	19 1845CST	-	-	0	0	?	-	Lightning	Lightning struck a power line in Mountain Home resulting in a 2-hour loss of power for 3,000 customers. TV cable service was also disrupted.
Hot Spring	19 2125CST	-	-	0	0	?	-	Lightning	In Malvern lightning struck a house causing structural damage, but no fire.
Hot Spring	19 about 2200CST	-	-	0	0	2	-	Lightning	Lightning struck a trailer in Malvern igniting the curtains causing smoke damage.
Sebastian	28 1445CST	-	-	0	0	?	-	Lightning	Lightning struck the roof of a house in Van Buren causing a fire. There was extensive damage to the roof and attic.

4 CALIFORNIA, Northern ——— NONE REPORTED

4 CALIFORNIA, Southern ——— NONE REPORTED

5 COLORADO

Larimer County	9	0	0	0	0	0	0	High winds	Wind gusts were estimated as high as 70 mph near Bellvue, with 60 mph at Buckhorn Mountain.
Northeast plains and foothills	19	0	0	3	0	0	0	Snow	3 to 6 inches of snow fell in the northeastern foothills and adjacent plains of Boulder, Larimer, and Weld counties. The wet snow caused a power outage in Fort Collins that lasted five hours and affected 5500 people.
Mountains	27/28	0	0	0	0	0	0	Heavy snow	Snow fell throughout the Colorado Rockies. Most spots received 3 to 6 inches, but 8 inches fell at Vail; a foot buried Cameron Pass, west of Fort Collins; 20 inches were recorded at Sunlight ski area near Glenwood Springs; and 22 inches buried the Mesa Lakes area above Grand Junction, causing a minor power outage.

6 CONNECTICUT

Northern, Central, and Eastern portion	08-09	PM EST	0	0	0	0	4	0	Lightning, heavy rain
<p>Numerous thunderstorms with unusually frequent and vivid display of lightning raised havoc with electrical power. Many thousands of customers experienced outages lasting from an hour or so up to nine hours in Morningside. Lightning struck and caused a fire in a large truck garage in Ellington. A barn was damaged by fire caused by lightning in Stafford during Friday afternoon. On Saturday morning a fire caused by lightning destroyed the Gomez barn in Lakeville which had long been a local landmark. Heavy rains caused considerable local street flooding throughout the area.</p>									

7 DELAWARE

Southeastern	25 All Day	0	0	5	0	0	0	Coastal Storm	A low center moved northeastward from the Virginia Capes during the morning, bringing what was called one of the worst storms to hit the Delaware coast in 20 years. Strong northeast winds with gusts to around 75 mph brought waves 10 to 15 feet high, causing serious erosion in some sections. Twenty families were evacuated in the South Bethany-Indian River Inlet area. U.S. 1 was closed between Fenwick Island and Dewey Beach due to high water. Rt. 54 west of Fenwick Island was seriously flooded, while a section of Ocean Drive caved in at South Bethany. Tree damage was prevalent and power was disrupted to between 2,000 and 3,000 homes. Rainfall of 2 to 3 inches was measured in some areas. The main damage was from beach erosion, with much of the 10-foot dune at South Bethany washed away. Roofs and windows comprised most of the property damage.
--------------	------------	---	---	---	---	---	---	---------------	--

8 FLORIDA

Key West, Monroe County	02 1310EST	-	-	-	-	-	-	-	Funnel Cloud
<p>A Funnel Cloud was sighted 8 miles northwest of Key West but went back up into the clouds without touching down.</p>									
Key West, Monroe County	02 1530EST	-	-	-	-	-	-	-	Waterspout
<p>Waterspout observed 6 miles south of Key West moving north. Dissipated, No landfall reported.</p>									
Fort Myers, Lee County	06 1645EST	-	-	0	0	1	-	-	Wind
<p>Heavy thunderstorms produced strong wind gusts which blew the roof off a trailer and overturned several pieces of yard furniture.</p>									
Cape Coral, Lee County	06 1650EST	0.40	16	0	0	6	0	0	Tornado(F1)
<p>Tornado damaged 30 homes in an 8 block area of southwest Cape Coral. Most was roof damage although several marine craft were wrecked. Tornado moved southwest and returned to the clouds, Probably part of the same thunderstorm complex which hit Fort Myers earlier.</p>									
Naples, Collier County	06 1720EST	-	-	-	-	-	-	-	Waterspout
<p>Waterspout observed and photographed by <u>Naples News</u> just northwest of the city over the Gulf of Mexico. No landfall reported.</p>									
Leesburg, Lake County	11 1550EST	-	-	0	0	1	-	-	Wind
<p>Heavy thunderstorms moved through the area causing mostly downed power lines and uprooted and downed trees. A large plate glass window was blown out at a downtown department store building that had been abandoned.</p>									
9 GEORGIA									
Banks County	10 1615EST	-	-	0	0	4	0	0	Wind
<p>Thunderstorm winds uprooted several trees, destroyed a barn, and damaged the roof on a home near Maysville.</p>									
Jasper County	10 1900EST	-	-	0	0	4	0	0	Wind
<p>Thunderstorm winds downed several trees and power lines and destroyed a chicken house.</p>									

10 IDAHO ————— NONE REPORTED

11 ILLINOIS ————— NONE REPORTED

12 INDIANA ————— NONE REPORTED

STORM DATA AND UNUSUAL WEATHER PHENOMENA

OCTOBER 1982

PLACE	DATE	TIME - LOCAL STANDARD	LENGTH OF PATH (MILES)	WIDTH OF PATH (YARDS)	NO. OF PERSONS		ESTIMATED DAMAGE		CHARACTER OF STORM
					KILLED	INJURED	PROPERTY	CROPS	

PLACE	DATE	TIME - LOCAL STANDARD	LENGTH OF PATH (MILES)	WIDTH OF PATH (YARDS)	NO. OF PERSONS		ESTIMATED DAMAGE		CHARACTER OF STORM
					KILLED	INJURED	PROPERTY	CROPS	

13 IOWA									
Creston (Union County)	05	1245CST			0	0	2	?	Severe Thunderstorm
A severe thunderstorm occurred in the vicinity of Creston, with 3/4 inch hail and strong winds. There was some damage to trees and crops.									
Iowa County	06	1145CST	?	?	0	0	3	?	Tornado (F0)
A tornado was reported by the Iowa County Sheriff's Office to be west of Millersburg. The tornado knocked down a large grain bin.									
Linn County	06	1221CST	?	?	0	0	0	0	Tornado (F0)
A tornado was reported by WMT Radio Meteorologist Greg Story 1 mile north of the studio between Hiawatha and Marion.									
Davenport (Scott County)	06	1400-1500CST			0	0	5	0	Heavy Rainstorm
A heavy rainstorm with rapid runoff and extensive urban flooding occurred in and around Davenport. Rainfall at WSO Noline was 2.1 inch. In Rock Island (4 miles NW of WSO) 1.32. In Davenport more than 2 inches fell in around 15 to 30 minutes.									
Cherokee County	19	0820CST			0	0	2	?	Hailstorm
Hail ranging from pea-size to 1 inch in diameter fell in and around Cleghorn for about 10 minutes. Damage to corn and soybean fields was reported. The scale at the Farmers Cooperative Elevator accumulated 3,000 pounds of hail which had to be cleaned off.									
Northern Iowa	19-	Afternoon			0	?	5	6	Snowstorm
Thunderstorms, rain and hail preceded the snow on the afternoon of the 19th as a cold front moved through. The early season snow ranged from a dusting to more than 8 inches. The worst hit Counties were Lyon, Sioux and Osceola in Northwest Iowa. The snow was heavy and wet, caused many trees to crack and break under the weight of the snow on the leaves and branches. This led to downed power lines and power outages, most of these short but some lasting into the next morning. Crops were affected by the snow. The damage was varied, and soybeans suffered more than corn. This also delayed harvesting further after a very late planting, and allowed infestations of rot to set in.									
Des Moines County	28	1235CST			0	0	0	0	Severe Thunderstorm
A severe thunderstorm with 3/4 inch hail occurred near Kingston in Northeast Des Moines County. No damage was reported.									

18 MARYLAND and D.C.									
Eastern Shore and Ocean City area	25	All Day			0	7	5	0	Coastal Storm
Storm moved northeastward from the Virginia Capes during the morning, bringing strong northeasterly winds that gusted to between 60 and 70 MPH, before tapering off during the evening. More severe losses were prevented since tides were in neap stage at the height of the storm. Waves at Ocean City were around 8-10 feet high, and 4 to 8 inches of water covered some streets. Less-protected portions of beach eroded up to 10 to 15 feet. A little over 3-1/2 inches of rain was measured at Whalesville, 10 miles west of Ocean City. Coast Guardsmen went to the aid of a 42-foot ketch off Ocean City, that was disabled when a 25-foot wave snapped its mast. The seven Canadian crew members were rescued, and treated for exposure and cuts and bruises. Property damage from the storm was mostly minor, with roofing losses prevalent, along with fallen trees and widespread power outages.									
19 MASSACHUSETTS									
Statewide	08-	PM EST	0	0	0	0	4	0	Lightning, heavy rain
Widespread thunderstorm activity accompanied by frequent and vivid lightning Friday evening and early Saturday caused numerous power interruptions across the state. A number of homes were struck by lightning resulting in generally minor damage. However, in Quincy three homes were struck by lightning and the resulting fire in a three story house caused \$30,000 damage. Considerable local street flooding occurred as heavy rains accompanied the storms. Amounts of 2.5 to 4 inches were reported.									
Eastern half, including Cape Cod and the Islands	09	Afternoon	0	0	0	0	5	0	High winds
Gale force northeasterly winds with gusts to 50 to 70 MPH caused numerous small craft to be torn from their mooring along the Massachusetts coast. Heaviest losses were reported from Scituate and Hingham. A 35-foot cabin cruiser was sunk in Scituate harbor and many smaller boats were damaged or were sunk. At Hingham over \$50,000 in losses were reported. Marblehead and Plymouth harbors also reported a number of losses. On Cape Cod many small boats were swamped at Orleans and from Chatham to Eastham. A number of small craft reported being adrift near Martha's Vineyard. High winds felled a large tree onto a big tent at the Topsfield Fair. Although 125 people were in the tent at the time no injuries were reported. Many tree limbs and a number of large trees were blown down by the gale force winds.									

14 KANSAS									
Garden City, Finney County	08	0137CST			0	0	0	0	Wind
Thunderstorm winds gusted to 58 mph at the Garden City Airport. No damage resulted.									
Goodland, Sherman County	08	0213CST			0	0	0	0	Wind
A thunderstorm wind gust reached 58 mph momentarily at the Goodland Airport. No damage resulted.									
Winfield, Cowley County	08	1045CST			0	0	4	0	Wind
A micro burst thunderstorm wind estimated at 70 mph nearly destroyed a home on the east edge of Winfield.									
Princeton, Franklin County	08	1400CST			0	0	4	0	Lightning
Lightning set fire to a house 4 miles northeast of Princeton. The home and its contents were a total loss.									
Johnson County	08	1500CST			0	0	3	0	Wind
Thunderstorm winds gusted to 66 mph at Edgerton and Johnson County Industrial Airport. The winds tore apart a chicken house at Olathe but caused no other significant damage.									
Moline, Elk County	08	1800CST	3	Narrow	0	0	5	0	Tornado (F1)
A tornado touched down northeast of Grenola and cut a path to north of Moline. It destroyed two 100 foot long hog sheds and killed three hogs at a farm north of Moline.									
Piqua, Woodson County	08	1915CST			0	0	4	0	Wind
Thunderstorm winds damaged several barns, a mobile home and a garage southwest of Piqua.									

20 MICHIGAN									
Southwest Lower Peninsula	20	0400-0700EST			0	0	5	C	Wind
Muskegon County - power outages Newaygo County - power outages Kent County - minor damage Ottawa County - power out, windows broken Allegan County - power outage Barry County - trees down, power outage Van Buren County - minor damage Kalamazoo County - building under construction destroyed, power outage Calhoun County - trees down, power outage Berrien County - Gusts to 63 mph at Coast Guard station. Windows broken. Apple crop damage, power outage Cass County - minor damage St. Joseph County - power outage.									
Oakland County	20	0700-0800EST			0	1	3	0	Wind - Lightning
Girl in Hazel Park injured by falling limb split from tree by lightning. Power outages, minor damage to buildings.									

15 **KENTUCKY** ----- NONE REPORTED

16 **LOUISIANA** ----- NO REPORT RECEIVED

17 **MAINE** ----- NO REPORT RECEIVED

STORM DATA AND UNUSUAL WEATHER PHENOMENA

OCTOBER 1982

PLACE	DATE	TIME - LOCAL STANDARD	LENGTH OF PATH (MILES)	WIDTH OF PATH (YARDS)	NO. OF PERSONS		ESTIMATED DAMAGE		CHARACTER OF STORM
					KILLED	INJURED	PROPERTY	CROPS	
21 MINNESOTA									
South & Central	5/6	1700-0400CST			0	0	6	0	Lightning
		Thunderstorms with intense lightning spread from south west Minnesota over the south and central sections of the state. Lightning struck many homes, started fires and caused numerous power outages. The Full Gospel Temple in Minneapolis was heavily damaged due to lightning.							
Worthington (Nobles County)	5	1825 CST			0	0	5	3	Wind
		Strong thunderstorm winds caused damage to three farm sites 4 miles southwest of Worthington in a 1 1/2 mile long and 200 yard wide area. A machine shed and garage were destroyed, a house and two grain bins were damaged and a hog barn was moved off its foundation. Trees were knocked over, some taking power lines out with them.							
Worthington (Nobles County)	5	1835 CST	1 1/2	5	0	0	0	3	Tornado (F0)
		A tornado touched down two miles southwest of Worthington and moved east southeast. Damage was confined to trees and crops.							
Pipestone (Pipestone County)	5	2230 CST			0	0	4	0	Wind
		Strong thunderstorm winds overturned three railroad cars in Pipestone and caused building damage at a farm site 1 1/2 miles east of Pipestone.							
22 MISSISSIPPI									
Vicksburg Warren County	6	1730CST			0	1	0	0	Lightning
		A 12 year old boy was struck and injured by lightning while removing clothes from a clothesline during a thunderstorm. The boy was hospitalized with burns to his hands and feet.							
Panola and Lafayette Counties	6	1800CST			0	0	6	5	Flash Flood
		Heavy thunderstorm rains dropped between 6 and 10 inches of water on Panola and Lafayette Counties causing widespread flooding and flash flooding. Heaviest hit was the Oxford area where some 40 homes and businesses were flooded. Some utility buildings were destroyed by the force of fast draining water in a residential area. Many houses were evacuated due to fast rising water. Gatesville in Panola County also reported about 10 homes and buildings with water damage. Flood waters also produced considerable damage to crops and highways. Two cars were washed off the road. No injuries were reported.							
23 MISSOURI									
Platte	8	1505CST	1/2	50	0	0	4	0	Tornado (F1)
		A tornado touched down briefly in the northern portion of Kansas City and destroyed a small building and downed wires.							
Montgomery	19	0345CST			0	0	0	0	Large Hail
		Hail to 3/4 inch diameter reported at Wellsville.							
Christian	19	1545CST			0	0	0	0	Large Hail
		Hail from marble to golf ball size fell over the western portion of the county.							
24 MONTANA ————— NONE REPORTED									
25 NEBRASKA									
Holt County	05	1800CST			0	0	3	4	Damaging Winds and Hail
		Hail to 1 1/2 inches reported at Chambers with some damage to crops. Wind gusts with the thunderstorms caused power outages at O'Neill.							
Polk and Brown Counties	05-06	2230CST-0100CST			0	0	5	3	Damaging Winds
		Thunderstorm winds of 70 to 80 m.p.h. caused damage to buildings and trees near Elsmere. At Bassett, the winds destroyed a drive-in theater screen and did damage to several grain bins and a large shop building. Winds also blew part of the roof off of a building 1 mile west of Bassett.							
NEBRASKA									
Butler County	08	1420CST			0	0	2	0	Damaging Winds
		Thunderstorm winds to 60 m.p.h. were reported at Brainard with minor damage.							
Madison, Stanton, and Cuming Counties	08	1500CST-1900CST			0	0	4	4	Flooding
		Heavy rains caused areas of lowland and urban flooding.							
Buffalo and Sherman Counties	08	1600CST	3	30	0	0	5	3	Tornado (F1)
		Tornado touched down 4 miles east of Ravenna destroying 4 sheds and some machinery. Minor damage occurred on 3 other farms. Tornado moved north to about 3 miles south of Rockville and dissipated.							
Buffalo County	08	1600CST			0	0	2	3	Hail
		One and a half inch hail fell at Ravenna with some crop and property damage.							
Sherman County	08	1630CST			0	0	2	0	Flash Flood
		Up to 3 inches of rain caused urban flooding in Ashton and Loup City.							
Panhandle of Nebraska	08	Late Evening-09 -Daytime			0	0	4	0	Blizzard
		Fifty to sixty m.p.h. winds and snow caused blizzard conditions in areas of the Panhandle as visibility fell to near zero in blowing snow. Conditions were most severe in Kimball County where numerous motorists were stranded as roads closed. Other problem areas were reported in Sioux County around Harrison. The winds with the storm also broke tree limbs, downed power lines and damaged a number of buildings.							
Box Butte County	18	2000CST			0	0	3	0	Lightning
		Lightning struck and killed 4 head of cattle southwest of Hemingford.							
North Panhandle of Nebraska	18	Late Night-19 to Morning			0	0	5	0	Heavy Snow
		Heavy snow associated with embedded thunderstorms fell over the north panhandle. Twelve inches of snow was reported at Hay Springs, 10 inches at Rushville and 6 to 10 inches around Hemingford. The snow was wet and heavy, breaking whole trees and downing utility lines. Hemingford was without power 15 hours and over three-quarters of the trees at Hay Springs were damaged.							
North Central and Northeast Nebraska	19	Morning to Afternoon			0	0	5	3	Heavy Snow
		Heavy wet snow associated with embedded thunderstorms fell across north central and northeast Nebraska. Generally in the northern two-thirds of counties extending from Brown east to Dakota County, reported snowfalls included 12 inches at Newcastle, 9 inches at Verdigre, 6 to 9 inches at O'Neill, and 9 inches at Laurel. The wet snow in combination with 20 to 25 m.p.h. winds resulted in many reports of utility line damage and power outages. Many trees also sustained damage.							
26 NEVADA ————— NONE REPORTED									
27 NEW HAMPSHIRE ————— NO REPORT RECEIVED									
28 NEW JERSEY									
N.J. Coast	25-26th				?	?	?	?	Violent Atlantic Wind and Rain Storm
		A storm hit the New Jersey Shoreline producing strong North to East winds that blew for two days promoting storm warnings. The storm caused tides to bulge upwards resulting in widespread extensive beach erosion. A 50 foot fishing vessel capsized East of Point Pleasant, N.J. claiming 8 lives. On the 25th the maximum wind speed that is a one minute wind speed was 33 MPH and the peak gust on that day was 48 MPH.							
29 NEW MEXICO ————— NONE REPORTED									

STORM DATA AND UNUSUAL WEATHER PHENOMENA

OCTOBER 1982

PLACE	DATE	TIME - LOCAL STANDARD	LENGTH OF PATH (MILES)	WIDTH OF PATH (YARDS)	NO. OF PERSONS				ESTIMATED DAMAGE		CHARACTER OF STORM
					KILLED	INJURED	PROPERTY	CROPS	PROPERTY	CROPS	
30 NEW YORK, Coastal											
Extreme SE Nassau County, Suffolk Co., New York City, and Westchester	25	AM-PM			0	?	?	?			Northern edge of Atlantic Storm with gale driven wind and rain
	The harsh Atlantic storm caused cold, gale-driven rain with wind reaching as high as 40 MPH. Some coastal flooding was reported, and power outages due to the high gusty winds. Departures were delayed at La Guardia Airport for 40 minutes.										
30 NEW YORK, Central											
Mabbitsville, Dutchess County	8	1830EST			0	0	6	0	0	0	Thunderstorm
	Severe wind struck near Mabbitsville causing considerable damage, knocking out powerlines and injuring two cows. Residents of the area reported hearing a freight train-like roar, then seeing debris after the storm scattered in all directions (circular like shape). No hail was reported, but lightning was vivid.										
Troy, Rensselaer County	9	0100EST			0	0	5	0	0	0	Flash Flood Thunderstorm
	A thunderstorm moved through the Albany/Schenectady/ Troy area during the morning of the 9th. The storm resulted in a flash flood mud slide in the City of Troy. Hail... the size of golf balls were reported in and around the Troy area. In some areas hail stones were six inches deep. Winds were up to 20 MPH at WSFO Albany. Two cars were buried in mud in Troy.										
30 NEW YORK, Western											
Lyndonville & Albion, Orleans County; Hartland, Niagara County; Grand Island, Erie County; Seneca Falls, Seneca County	20-21				-	-	4	0	0	0	Wind
	Strong winds with gusts more than 40 mph downed trees, broke power lines, and damaged homes. Thousands of electric customers were without power for many hours.										
31 NORTH CAROLINA											
Dare County	10-12				0	0	0	?	?	?	Wind and Flooding
	A strong low pressure system located well off shore produced high winds and rough seas, which resulted in low-level flooding and beach erosion. A cottage at Kitty Hawk received damage and sections of Highway 12 became impassable as more than a foot of water covered the road.										
Coastal Sections	24-26				3	0	6	0	0	0	Wind and Flooding
	An early season, extra-tropical storm moved up the coast, producing high winds, heavy rain, rough seas, and beach erosion, which resulted in extensive damage to the Outer Banks and other coastal areas of the state. Kitty Hawk suffered the most damage as 10 cottages were destroyed and 4 others damaged as seas running 10' above normal eroded away foundations as well as 35' of beach near Milepost 4. Highways 12 and 158 were also damaged as overwash undermined the roadbed and made sections of the roads impassable. Two cottages at Ocean Isle Beach were also destroyed as downed powerlines sparked a fire which gutted the two dwellings. Offshore, the Nor-easter produced 30' seas which forced the evacuation and rescue of several boats, and sank a 58' ketch resulting in the death of 3 of the 5 people on board. Inland areas of the state received minor damage, limited mainly to downed trees and powerlines, power outages and low-land flooding. The Neuse River was 8' above normal at New Bern, forcing sections of Highways 17 and 70 to be closed. Winds during the storm reached hurricane force offshore, as Frying Pan Shoals recorded NNW winds at 84 MPH with gusts to 94MPH. Inland stations recorded winds in excess of 50 MPH, with Cedar Island recording a gust of 69MPH. Rainfall amounts from the two day storm were generally less than 3", although 4.84" was recorded at Wm. O. Huske. Much of the flooding that occurred was attributed to the storm surge which accompanied the low pressure system.										
32 NORTH DAKOTA											
Central and West	5-6				0	0	4	0	0	0	Heavy Snow
	Heavy snow (8 inches at McClusky in Sheridan County; 7 inches at Butte and Emmett in McLean County; 7 inches at Hursfield in Wells County; 6.5 inches at Sawyer and 6.0 inches at Velva in McHenry County; 6.0 inches at Rolla in Towner County; 5.0 inches at Richardton in Stark County; and 4.8 inches at Bismark in Burleigh County) broke tree limbs, downed power lines and caused very slick roads. Because of the slick roads, numerous accidents occurred and cars slid into ditches.										
33 OHIO											
Kidron, Wayne County	07	1730 EST	-	-	0	1	0	0	0	0	Lightning
	An 8 year old girl was struck in the back by lightning while pulling a carrot in a garden at her home. She was seriously injured and was in a coma for 4 days.										
34 OKLAHOMA											
Meleetka, Okfuskee County	02	1700CST			0	0	?	?	?	?	Wind
	High wind, lightning, and rain caused considerable damage to both the downtown and residential areas of Meleetka.										
McClain County	02	2020CST			0	0	?	?	?	?	Wind
	Purcell and Wayne had winds 40-50 MPH and heavy rain. Wayne also had pea size hail.										
Fairview, Major County	08	0900CST			0	0	?	?	?	?	Wind
	Strong wind, heavy rain, and hail caused damage to houses and auto windows and power outages in Fairview.										
Atoka, Atoka County	08	1925CST			0	0	4	0	0	0	Wind
	Thunderstorm winds caused heavy damage to a mobile home east of Atoka.										
Chelsea, Rogers County	19	0330CST			0	0	5	0	0	0	Lightning
	Lightning started a fire which destroyed a barn and contents 1-1/2 miles northwest of Chelsea. The barn contained an antique grain drill, about 25 tons of tespedeza, and 50 tons of prairie hay.										
35 OREGON ————— NO REPORT RECEIVED											
36 PENNSYLVANIA, Eastern — NONE REPORTED											
36 PENNSYLVANIA, Western — NONE REPORTED											
37 RHODE ISLAND											
Statewide	08-09	PM EST Early AM	0	0	0	0	0	4	0	0	Lightning, heavy rain
	Thunderstorms accompanied by frequent and vivid lightning caused power outages. In Woonsocket lightning struck and set fire to a large tenement dwelling leaving six families homeless. A fire likely caused by lightning destroyed a barn in North Smithfield early Saturday morning. In Hope Valley a two-family home was extensively damaged by a fire ignited by lightning. Heavy rains caused considerable local street flooding.										

STORM DATA AND UNUSUAL WEATHER PHENOMENA

OCTOBER 1982

PLACE	DATE	TIME - LOCAL STANDARD	LENGTH OF PATH (MILES)	WIDTH OF PATH (YARDS)	NO. OF PERSONS		ESTIMATED DAMAGE		CHARACTER OF STORM
					KILLED	INJURED	PROPERTY	CROPS	

PLACE	DATE	TIME - LOCAL STANDARD	LENGTH OF PATH (MILES)	WIDTH OF PATH (YARDS)	NO. OF PERSONS		ESTIMATED DAMAGE		CHARACTER OF STORM
					KILLED	INJURED	PROPERTY	CROPS	

38 SOUTH CAROLINA

Chapin (Lexington County)	13	1735EST			0	0	4	0	Thunderstorm Winds
Winds during a thunderstorm blew the roof off a small building.									
Northeast Coast of South Carolina (Georgetown County) (Horry County)	24	Afternoon and Evening			0	0	5	0	Wind Flooding
A low pressure system intensified rapidly on Sunday Oct. 24th as it moved northward through the S. C. coastal waters. The storm brought heavy rains of 3 to 6 inches to the immediate coast of N.E. South Carolina causing evacuation of a few homes near Myrtle Beach. There was some beach erosion from Myrtle Beach northward but damages from erosion were not heavy. While the strongest winds reported onshore were around 40 knots winds offshore were much higher. Seventy miles east of Georgetown winds up to 70 knots were reported. Several ships off the S. C. coast were disabled by high winds and heavy seas. There were reports of seas 50 to 100 miles offshore exceeding 40 ft. height.									

39 SOUTH DAKOTA

Perkins County	5	Afternoon	-	-	0	0	0	2	Lightning
Lightning ignited a haystack north of Lemmon.									
Walworth County	5	1645CST	-	-	0	0	3	0	Lightning
Lightning struck a small feed building just north of Selby. The building was destroyed.									
Brown County	5	1700CST	-	-	1	0	2	0	High Winds Lightning
A woman was killed during a heavy thunderstorm, five miles south of Hecla. The victim was getting out of a car to remove a tree branch blocking a county road when another tree branch fell on her causing her death. Winds also blew down a tree, striking a transformer, resulting in a power outage at Aberdeen. Lightning struck a power pole igniting a fire in an elementary school boiler-room.									
Haakon County	5	Afternoon	-	-	0	0	0	0	Hail
Hail, approximately three-quarters inch in diameter, fell at Midland.									
Charles Mix County	5	1915CST	-	-	0	0	2	0	Lightning
Hail, one inch in diameter, fell at Wagner.									
McCook & Turner Counties	5	2040CST	-	-	0	0	2	0	Lightning
Lightning damaged an electrical substation at Salem, causing power outages. Lightning also damaged an electrical underground pedestal at Dolton.									
Minnehaha County	5	2200CST	-	-	0	0	2	0	Lightning
Lightning knocked a hole in the wall at a Sioux Falls home; several other homes were also struck.									
Turner County	8	0800CST	-	-	1	2	0	0	Lightning
A county road construction employee was struck and killed by lightning and two other employees were slightly injured while working on a bridge north of Marion.									
Lawrence County	8 9	Evening Evening	-	-	0	0	6	6	Heavy Snow Winds
A record-breaking snowstorm for so early in the fall paralyzed the northern Black Hills with three to six feet of heavy, wet snow and winds of 40-70 mph. Heavier snowfall amounts included 36 inches at Lead, 41 inches at Galena and 23 inches at Deadwood. The higher elevations of the Black Hills received 5-6 feet of snow.									
A section of a roof of a clothing store in Lead collapsed under the weight of the snow. The roofs of at least three trailer homes in the area also collapsed. Several other businesses in Lead also reported minor roof damage.									
Numerous automobile accidents were caused by slippery roads. Strong winds combined with snow-laden tree branches and ice-covered power lines broke power lines, cross arms and telephone poles. Most power poles in the Deadwood and Lead areas were downed. Damage to forty miles of power lines, including 30 broken power poles occurred in a remote area of the Black Hills. Some residents of Vanocker Canyon and the Dolton Park area were without power for five days.									

SOUTH DAKOTA

									Deadwood was out of water and electricity for at least three days causing food spoilage.
Numerous roads were closed in the area and several automobiles were smashed by snow plows in the ensuing clean-up.									
Extensive damage to timber was reported. Ranchers fought to rescue cattle, trapped in the snow. Two cattle deaths occurred but 200-300 head were missing.									
Pennington County	8 9	Evening Afternoon	-	-	0	0	1	0	Windstorm
The strong storm which caused heavy snows in the Black Hills also caused strong winds over 50 mph over the eastern foothills. Gusts to 60 mph at Rapid City were common.									
McPherson County	12	1900CST	-	-	0	0	2	0	Lightning
Lightning knocked a large hole in the roof of a house in Eureka. The lightning also knocked a hole in the cement of a garage.									
Turner County	12	Evening	-	-	0	0	2	0	Lightning
A home in Hurley received minor damage.									
Southeast Corner of South Dakota	19	Mid-Morn Late Evening	-	-	0	0	4	4	Snowstorm
An early fall snowstorm dropped 3-12 inches of wet snow over the southeastern corner of South Dakota. The wet snow combined with gusty winds of 20-40 mph plummeted windchills to around zero. Numerous trees still laden with foliage snapped, downing power lines. Power outages were extensive from Vermillion to Mitchell. Some of the downed power lines in Vermillion caught fire. Thunder rumbled and lightning flashed amidst the height of the snowstorm. Upward of a foot of snow fell in northern Union and southern Lincoln Counties. High winds gusts knocked out television and radio transmitters in Sioux Falls. The weight of the snow collapsed a fiber-glass roof panel on a covered stadium at the University of South Dakota at Vermillion. Dangerous road conditions existed as Highway 18, south of Yankton, was blocked by jack knifed semi-trailer trucks. Precipitation delayed further an already late harvest.									

40 TENNESSEE ————— NONE REPORTED

41 TEXAS, Northern

Mansfield, Tarrant County	6	1800CST- 1900CST			0	0	?	?	Flash Flood
Three to 4.5 inches of rain fell within a 90 minute period in Mansfield, resulting in flooding of Walnut Creek. Minor flooding resulted, with two homes receiving slight damage. Urban flooding resulted in damage to a bank building's basement in Mansfield.									
Pottsboro, Grayson County	8	1745CST			0	0	0	0	Funnel Cloud
The funnel cloud did not touch down.									
McKinney and Plano areas, Collin County	8				0	0	?	?	Hailstorm
Mostly marble size hail, with a few hailstones as large as golf balls accompanied a thunderstorm through the McKinney and Plano areas.									
Wichita Falls, Wichita County	28	0430CST			2	0	0	0	Lightning
Lightning struck a hanger at Sheppard Air Force Base, then jumped to the ground striking the airman who were walking to a nearby classroom. The two men were lying in a pool of water when found. One of the airman was dead at the scene, the other was critically injured and died several days later in the base hospital.									

41 TEXAS, Southern ————— NONE REPORTED

STORM DATA AND UNUSUAL WEATHER PHENOMENA

OCTOBER 1982

PLACE	DATE	TIME - LOCAL STANDARD	LENGTH OF PATH (MILES)	WIDTH OF PATH (YARDS)	NO. OF PERSONS		ESTIMATED DAMAGE		CHARACTER OF STORM
					KILLED	INJURED	PROPERTY	CROPS	
41 TEXAS, Western									
San Angelo, Tom Green County	02	2058CST			0	0	4	0	Wind
									Thunderstorm wind caused substantial damage to Quail Valley, about 2 to 3 miles north-northeast of San Angelo. Several sheds, mobile homes and campers were damaged.
Midland, Midland County	08	0447CST			0	0	2	0	Wind
									Wind gusted to 62 mph at the Midland Regional Airport producing only minor damage.
42 UTAH ————— NONE REPORTED									
43 VERMONT ————— NONE REPORTED									
44 VIRGINIA									
Buchanan County	10	Afternoon			0	0	4	0	Rain
									Locally heavy rain fell over the northern section of the County near the town of Hurley. Over 2 inches of rain occurred between 3PM and 5PM, resulting in partially blocked highways due to overflowing streams and mudslides. Washing action was responsible for an estimated \$30,000 damage to local roads. In addition, a restaurant and an office building reported water damage.
Southeastern	24-25				0	0	6	0	Coastal Storm
									A steadily intensifying low center moved northward from the southeastern coastal waters during the night of the 24th, reaching a position just off Norfolk the morning of the 25th. A combination of strong sustained winds, high tides and wave action inflicted considerable damage to beaches, as well as seawalls and property over the Tidewater area. Peak gusts ranged around 75 mph and tides ran about 6 feet above mean low water between 6AM and 7AM on the 25th. Numerous roads were blocked due to high water or downed trees with power outages affecting 58,000 homes. Norfolk measured 2.41 inches of rain with the storm. Some minor damage was reported by counties fringing the Tidewater region, confined mainly to trees and roofing. A breakdown of major damage follows: Norfolk - approximately \$750,000, comprising seawalls, boats, erosion and structural damage to 5 homes; Virginia Beach - about \$1.1 million from erosion to beaches and seawalls and moderate to major damage to 5 homes; Hampton - around \$595,000, mainly to seawalls in the Grandview section.
Chesapeake	29	0400-0700EST			2	5	4	0	Fog
									Visibility lowered to zero in spots during the early morning hours. Several accidents occurred, one involving 12 vehicles. Two fatalities resulted, and at least 5 others were injured.
45 WASHINGTON									
Clallam, Grays Harbor, Jefferson, King, Pacific, Pierce, Skagit, and Snohomish Counties	22-23				0	0	5	0	Wind
									An intense low pressure center from the Pacific moved through the area and caused strong winds. High winds downed trees and power lines. A roof was even torn from a mobile home near Quillayute. Near Bellingham, winds were clocked at 56 mph on the morning of the 22nd. Hoquiam reported winds up to 55mph. At Cape Flattery, gusts up to 70 mph were recorded on the 23rd.
Benton County	28-29	1345PST, 28th - 0315PST, 29th			0	0	5	0	Rain
									Heavy rains from a moist, subtropical air mass caused an estimated \$500,000 worth of damage to the Foster and Marshall Building in Richland. Water was four feet deep in the basement at the peak of the flooding. Some computer equipment and the building's heating and electrical systems were damaged. Unofficially, the rainfall total for Richland for the period was 1.22 inches. Nearby, Hanford received 0.97 inches for the same period.
46 WEST VIRGINIA ————— NONE REPORTED									
47 WISCONSIN									
Janesville, Rock County	19	0038-0310CST			0	0	?	0	Lightning
									Electrical storm with numerous lightning strikes damaged 1 business and 3 homes.
Town of Lima, Rock County	19	0349CST			0	0	?	0	Lightning
									Lightning apparently started a fire which destroyed a barn and small tractor.
Town of Delavan, Walworth County	19	0528CST			0	0	?	0	Lightning
									Lightning struck an abandoned house used for storage. Structure destroyed but contents saved.
Markesan and Green Lake, Green Lake County	19	0630CST			0	0	?	0	Lightning
									Numerous lightning strikes downed power lines leaving 780 customers without electricity.
Eden, Fond du Lac County	19	1715CST			0	0	?	0	Lightning
									Barn set on fire by lightning strike.
Northern third of Wisconsin	19-20				0	0	?	0	Snow, wind
									The first major snowstorm of the season left 8-16 inches of new snow across the "snowbelt" along Lake Superior with lesser amounts to the south. At the height of the storm, 5000 customers were without power for up to 18 hours. Many schools and roads were closed.
48 WYOMING									
Eastern Wyoming: Crook, Weston, Campbell, Niobrara, Albany, Platte, Goshen, and Laramie Counties	8-9	PM Day			0	0	5	0	Wet snow
									An early fall storm swept across the mountains and plains of Wyoming Friday night and Saturday. The storm buried the Bear Lodge Mountains and the Moskee area south and east of Sundance in Crook and Weston Counties with up to five feet of wet snow. An estimated four thousand cattle still on summer ranges were stranded. Rescue efforts estimated at \$100,000 lasted from October 11 to the 17th.
									Elsewhere in the east plains, high winds with recorded peak gusts to 62 mph at Cheyenne, 54 mph at Sheridan, 53 mph at Laramie, and 50 mph at Gillette, caused blowing snow and reduced visibilities to zero in some areas.
49 ALASKA									
South Central	7				0	?	5	5	Heavy Snow
									The heaviest snow for so early in the season dropped up to a foot of snow in the Anchorage area. With motorists not yet prepared for winter driving a rash of motor vehicle accidents occurred. Some tree limbs and power lines were felled by the heavy snow. The local barley crop was damaged.
Northwest	18-19				0	0	5	0	Coastal Flood
									A series of storms brought persistent strong southwest winds to coastal Northwest Alaska from the 16th to the 19th. High tides in Norton Sound rose to 4 feet above normal on the evening of the 18th. The same evening the tides in Kotzebue Sound were 6 to 8 feet above normal. High tides, heavy surf and floating ice destroyed several boats and flooded some homes along Kotzebue's Front Street.
Interior	18-19				0	?	4	0	Heavy Snow
									Fairbanks had one of its heaviest 24 hour snowfalls on record during this century. Up to a foot of snow fell in a 12 hour period as warm moist air flowed in from the southwest. Many roads were closed for at least part of a day. Local ski areas had one of their earliest openings on record.
Arctic Coast	19-21				0	?	4	0	Blizzard
									A strong low in the Beaufort Sea brought strong west winds to the eastern Arctic Coast from Prudhoe Bay to the Canadian Border. At the height of the storm winds were 50 to 70 mph. Whiteout conditions and drifting snow paralyzed travel throughout the oil fields. A barge containing 500,000 gallons of fuel broke loose from its moorings and was brought under control only after considerable effort.

STORM DATA AND UNUSUAL WEATHER PHENOMENA

OCTOBER 1982

PLACE	DATE	TIME - LOCAL STANDARD	LENGTH OF PATH (MILES)	WIDTH OF PATH (YARDS)	NO. OF PERSONS		ESTIMATED* DAMAGE		CHARACTER OF STORM	PLACE	DATE	TIME - LOCAL STANDARD	LENGTH OF PATH (MILES)	WIDTH OF PATH (YARDS)	NO. OF PERSONS		ESTIMATED* DAMAGE		CHARACTER OF STORM	
					KILLED	INJURED	PROPERTY	CROPS							KILLED	INJURED	PROPERTY	CROPS		
50 HAWAII																				
Kauai and Oahu	26-30				0	0	5	5	Heavy rain											
		Frequent heavy showers associated with a slow moving cold front cause widespread minor flooding on Kauai and Oahu. As much as 15 to 20 inches of rain fall over many leeward and lower areas during the 5 day period. Some overflow of major rivers and streams draining out of the interior occurred on Kauai.																		
51 PUERTO RICO									NONE REPORTED											
52 VIRGIN ISLANDS									NONE REPORTED											
53 PACIFIC									NONE REPORTED											

STORM SUMMARY

OCTOBER 1982

STATE	TORNADOES				HAILSTORMS				WINDSTORMS				LIGHTNING				FLOODING				HEAVY SNOWSTORMS AND BLIZZARDS				ICE STORMS				ALL OTHER			
	NUMBER	DAYS	DEATHS	INJURIES	†DAMAGE	DEATHS	INJURIES	†DAMAGE		DEATHS	INJURIES	PROP. ERTY	CROPS	DEATHS	INJURIES	†DAMAGE		DEATHS	INJURIES	PROP. ERTY	CROPS	DEATHS	INJURIES	†DAMAGE		DEATHS	INJURIES	PROP. ERTY	CROPS			
								PROP. ERTY	CROPS							PROP. ERTY	CROPS							PROP. ERTY	CROPS					PROP. ERTY	CROPS	
Alabama																																
Arizona																																
Arkansas	1	1			3																											
California																																
Colorado																																
Connecticut																																
Delaware												5																				
Florida	1	1			6						1																					
Georgia											5																					
Idaho																																
Illinois																																
Indiana																																
Iowa	2	1			3			2	?								5			?	5	6										
Kansas	1	1			5						5																					
Kentucky																																
Louisiana	≠																															
Maine	≠																															
Maryland & DC											7	5																				
Massachusetts											5																					
Michigan											5	C		1	3																	
Minnesota	1	1			3						5	3																				
Mississippi														1																		
Missouri	1	1			4									?	?	?																
Montana																																
Nebraska	1	1			5			3	4		5	3																				
Nevada																																
New Hampshire	≠																															
New Jersey														?	?														?	?		
New Mexico																																
New York											6	0C																	?	?		
North Carolina																																
North Dakota																																
Ohio														1																		
Oklahoma														4	?																	
Oregon	≠																															
Pennsylvania																																
Rhode Island																																
South Carolina																																
South Dakota																																
Tennessee											1			1	2	4	2															
Texas																																
Utah																																
Vermont																																
Virginia																																
Washington																																
West Virginia																																
Wisconsin																																
Wyoming																																
Alaska																																
Hawaii																																
Pacific																																
Puerto Rico																																
Virgin Islands																																

STORM DATA AND UNUSUAL WEATHER PHENOMENA

LATE REPORTS

LATE REPORTS

PLACE	DATE	TIME - LOCAL STANDARD	LENGTH OF PATH (MILES)	WIDTH OF PATH (YARDS)	NO. OF PERSONS		ESTIMATED ¹ DAMAGE		CHARACTER OF STORM
					KILLED	INJURED	PROPERTY	CROPS	

PLACE	DATE	TIME - LOCAL STANDARD	LENGTH OF PATH (MILES)	WIDTH OF PATH (YARDS)	NO. OF PERSONS		ESTIMATED ¹ DAMAGE		CHARACTER OF STORM
					KILLED	INJURED	PROPERTY	CROPS	

6 CONNECTICUT

AUGUST 1982

Newtown 9 1900EST 0 0 3 0 Lightning

Lightning caused the destruction of a large barn. Several other houses were hit and sustained minor damage.

Orange 17 1400EST 0 0 5 0 High Wind
West Haven

High winds estimated over 60 mph ripped roofs off three large buildings. A mobile home was rolled over many times and large hail was reported. Damage to the area was about 1/2 mile wide and 3 miles long. Witnesses said the stormy weather lasted about 3 minutes at locations along the damage path. National Weather Service investigation considers the damage to be the result of a thunderstorm downburst.

Danbury 25 1400EST 0 1 4 0 High Wind
Newtown

High wind blew several small roofs off buildings. Witnesses spoke of "The roar of a freight train" and of "suction forces". A sailboat was blown through a glass storefront and a woman inside was injured by flying glass.

SEPTEMBER 1982

NONE REPORTED

9 GEORGIA

JULY 1982

Chattahoochee 28 1625EST 0 4 0 0 Lightning
County

Lightning struck a pup tent in a bivouac area of Fort Benning, causing minor injuries to four soldiers.

17 MAINE

AUGUST 1982

Kittery Point-Berwick 05 0600-0700EST 0 0 4 0 Lightning
York County

A thunderstorm produced several lightning bolts which broke off tree limbs and they knocked down power lines leaving 1,000 Kittery Point residents without power for about an hour. An oddity occurred in Berwick when a lightning bolt struck an 80 foot Pine and tore it in half. The top fell straight down and it appeared as if 2 trees were side by side. The force of the bolt hurled a seven foot piece over 40 feet from the tree, and a 14 foot piece about 12 feet from the base of the tree.

York, Cumberland and 25- 1900EST-0700EST 0 0 5 0 High Winds
Sagadahoc Counties 26

An intense low pressure area produced high winds that blew down signs, numerous trees and limbs which in turn damaged buildings, vehicles and tore down power lines. The Coast Guard reported many boats had broke from their moorings along the coast and several were destroyed against the rocks. NWS Portland recorded gusts to 48 mph early on the 26th. Scattered power losses were common with the Gorham-SouthWindham-Sebago area hardest hit with about 2,000 customers left powerless for a few hours early on the 26th.

SEPTEMBER 1982

NONE REPORTED

19 MASSACHUSETTS

AUGUST 1982

Arlington 17 1700EST 0 1 4 0 Lightning
Brockton
Natick
Weston

Probably about 50 strikes occurred in eastern portions of the state during the evening, but a bizzare event in Arlington caused the hospitalization of a young woman. As she spoke on the telephone in her house, lightning passed into the telephone line and blasted her "across the room".

Meanwhile, the house across the street was hit at the same time and its upper floor gutted by fire. In Boston a museum was damaged as lightning struck a roof skylight and stairwell.

In Weston a strike splintered several rafters in one house and blew up a television set in another. In Natick a house sustained six-thousand dollars in damage.

SEPTEMBER 1982

Cape Cod area 2 early AM 0 0 0 0 Heavy Rain,
Local Flooding

Thunderstorms dropped 3 to 5 inches of rain especially in the Hyannis area with considerable local street flooding. An observer at W. Yarmouth measured 4.80 inches during a period of 6-12 hours.

Essex County 23 1700 to 0 0 0 0 Funnel, Hail
1800EST

A thunderstorm moved through the area and a funnel was observed at Rowley for a few minutes at about 1730EST. A few reports of hail were received.

26 NEVADA

SEPTEMBER 1982

NONE REPORTED

27 NEW HAMPSHIRE

AUGUST 1982

Statewide 25- 1800EST-0600EST 0 0 5 0 High Winds
26

An intense low pressure area produced high winds that blew down signs, numerous trees and limbs which, in turn, damaged buildings, vehicles, and tore down power lines. The winds also broke about 50 boats from their moorings through the Lakes Region. Some boats drifted 5 to 10 miles away, some banged into rocks, while others capsized. Boat damage was slight to severe. Waves in the middle of Lake Winnepesaukee reached 5 and 6 feet, where winds were estimated at 50 to 60 mph. NWS Concord recorded a peak gust of 44 mph, and atop Mount Washington a few gusts to 100 mph occurred around 2000EST on the 25th. Power failure was common statewide with central sections hardest hit. The Lakes Region had about 8,000 without power, another 5,500 in the Conways and Chatham areas as well as 2,500 in the Lancaster-Groveton-Whitefield Region were powerless upwards to 9 hours in isolated cases.

SEPTEMBER 1982

NONE REPORTED

STORM DATA AND UNUSUAL WEATHER PHENOMENA

LATE REPORTS

LATE REPORTS

PLACE	DATE	TIME - LOCAL STANDARD	LENGTH OF PATH (MILES)	WIDTH OF PATH (YARDS)	NO. OF PERSONS		ESTIMATED DAMAGE		CHARACTER OF STORM
					KILLED	INJURED	PROPERTY	CROPS	

PLACE	DATE	TIME - LOCAL STANDARD	LENGTH OF PATH (MILES)	WIDTH OF PATH (YARDS)	NO. OF PERSONS		ESTIMATED DAMAGE		CHARACTER OF STORM
					KILLED	INJURED	PROPERTY	CROPS	

30 NEW YORK, Central

JULY 1982

Lower Hudson Valley	27 1600EST	0 2 6 °C							Thunderstorm
Two persons hit by lightning in two separate incidents. One while fishing in the town of Shandaken, Ulster County. The second was hit somewhere in northern Orange County. Upon investigation by WSFO Albany it was determined that storm damage was due to straight line winds. Damage amounted to over \$1.5 million.									
Schenectady County	27 1615EST	0 0 0 °C							Rain, Hail
Half inch hail fell in Schenectady County. Some minor urban flooding reported.									
Orange, Ulster, and Dutchess Counties	28 1645EST	5 4 0 °C							Lightning
Five persons hit by lightning in Lagrange in Dutchess County. All five were hiking at the time. Some area Fire Departments were alerted to reports of fires due to lightning. Over one thousand people were without power. In Highland Falls, Orange County, painters stopped work as a storm approached. A lightning bolt struck a building, raced through wires, bounced off the ladder of the painters, leaped through the air to a fire siren tower, setting off the siren. This happened just as the men were thinking of taking the ladder down in case lightning was in the area.									
Kerhonkson, Ulster County	31 1700EST	1 1/4 - 1 4 °C							Severe Wind
One female was trapped and injured in a car when several trees fell due to a storm. Heavy rain and wind were observed by the public. Golf ball hail was reported and over 1500 homes were without power. Air surveillance mentioned by paper stated fields were all flattened in one direction.									

34 OKLAHOMA

MAY 1982

Elmwood, Beaver County	24 1645CST	4.0 10 0 0 1 0							Tornado (F0)
A small tornado touched down 2 miles east and 1/2 mile north of Elmwood. The tornado moved east northeastward and dissipated just north of a natural gas booster plant. Eyewitnesses described the tornado as having a well defined funnel with a dust swirl on the ground beneath it. The path was mostly over open rangeland, with minor damage to a windmill.									

37 RHODE ISLAND

AUGUST 1982

NONE REPORTED

SEPTEMBER 1982

NONE REPORTED

41 TEXAS, Southern

MAY 1982

ValVerde Co.	5 1845CST	0 0 4 3							Wind
ValVerde Co.	5 1845CST	0 0 4 3							Hail
ValVerde Co.	5 2100CST	0 0 5 0							Heavy Rain
An initial severe thunderstorm moved east to west over north ValVerde Co. but was followed by a series of several other storms over the county. Around Juno at 6:45 pm golfball size hail was reported along with winds of 60 to 70 mph. Ranch buildings in the area were deroofed, windows broken, and many vehicles battered. Heavy rains with the storms had caused flash flooding to set in down canyons of north ValVerde County by 9pm cst. The Devils River surged out of banks through Bakers Crossing and peaked some 5-6 feet over floodstage. Rainfall maximum was about 4 inches north of Juno. In Del Rio urban flooding swept down city streets causing some damages after 3.9 inches of rain fell (including over 1 inch which fell in 20 minutes just after 8 pm cst). Flash floods put swift water over Highways 163 and 189 and Farm Road 1024 through the next morning.									
Edwards Co.	5 1930CST	0 0 ? ?							Wind
High wind gusts were reported over ranch lands northwest of Rocksprings as a severe thunderstorm moved eastward. Outbuildings and utility lines were damaged.									

TEXAS, Southern

ValVerde Co.	5 2025CST	1/10 20 0 0 4 0							Tornado (F1)
A family of small funnel clouds in a cluster were spotted southwest of Del Rio. As the funnels moved east one touched ground in Mexico just south of Acuna. The funnels tracked east with a second one touching down briefly near Del Rio just outside Val Verde Park Estates subdivision. The small brief twister took the roof off a barn but did not actually make a direct hit on any structures. Hail of 3/4-inch diameter was falling in the area at the time. The tornado lifted quickly, was seen aloft again to the east, but did not touch ground again.									
Kinney Co.	5 2040CST	0 0 4 3							Wind
The first of several thunderstorms moved into Kinney Co. from the west about 820 pm cst with strong wind gusts across the north and central sections of the county. About 30 minutes later another thunderstorm produced damaging wind gusts over the south part of the county. Damages in Bracketville included downed trees, roofs peeled, and utility wires broken.									
Maverick Co.	5 2105CST	0 0 4 ?							Wind
Maverick Co.	5 2110CST	0 0 4 4							Hail
A severe thunderstorm moving across north Maverick Co. produced high wind gusts that downed power lines and poles. Off Farm Road 1908 near the Maverick-Kinney Co. line a mobile home was severely damaged by the strong west-wind blast. It was unoccupied at the time. Just after the wind gust a swath of large hail followed mainly affecting rural areas and crops. The hail passed about 4 miles north of Eagle Pass.									
Medina Co.	6 0030CST	0 0 ? 4							Wind
Medina Co.	6 0200CST	0 0 ? ?							Heavy Rain
A line of severe thunderstorms moving east over the county caused mainly scattered light property damage. However, in the Natalia area considerable corn was knocked down by the gusts. Heavy rain in a 3 hour period amounted to 4.96 at Rio Medina/ 4.25 at Hondo/ 3.10 at D'Hanis. Rural roads in the north part of the county were overwashed by creeks for several hours after 2am. No injuries occurred.									
Bexar Co.	6 0030CST	0 0 4 4							Hail
Bexar Co.	6 0230CST	0 6 5 0							Heavy Rain
A line of thunderstorms passed over the area west to east and contained several storm cells which progressed one-behind-the-other over north Bexar Co. producing severe flash flooding. The initial storm pounded northwest parts of the county and city of San Antonio. Shortly after 1230 am 1-3/4 inch diameter hail was reported falling over Leon Valley with 3/4 inch hail around the Medical Center.									
Subsequent storm cells led to severe flash flooding over the north part of the county and the northern suburbs of San Antonio. Rainfall totals for the 2-hour duration storm up to 230 am included these: near Shavano Park 7.13 inches/ upper Olmos Creek 5.6/ Lockhill-Selma Rd. 5.5/ Intercontinental Airport 3.54/ less than 1 inch fell south of downtown. Dozens of motorists were rescued by Fire and Police Depts. as they drove into swift water in darkness. At least 6 persons were rescued from dire situations along Olmos Creek north of Loop 410. All 6 luckily were saved from car tops and in trees with only minor injuries. The intense downpour created a mudslide at IH35 and Loop 410 which trapped several cars but caused no injuries. Damages included several dozen vehicles washed away.									
Wilson Co.	6 0145CST	0 0 4 4							Wind
Wilson Co.	6 0300CST	0 0 ? ?							Heavy Rain
Thunderstorm wind left a swath of damage from Floresville to LaVernia. Damages were mainly to roofs, trees, and power lines. Some crops were lost in the northeast part of the county. Intense rain dropped 1.5 inches in a short time leading to brief flooding of low roads.									
Guadalupe Co.	6 0145CST	0 0 5 4							Wind
A large developing severe thunderstorm moved east over the county and caused damaging wind gusts over the south half of the county. On the south side of Seguin an old church was heavily damaged by wind gusts while south of Kingsbury several tin barns were destroyed and farm houses were damaged. Crops were damaged in the New Berlin area too.									
Comal Co.	6 0250CST	0 0 4 ?							Heavy Rain
Rainstorms that flooded adjacent parts of Bexar Co. also hit southern Comal Co. producing flash flooding on small streams for several hours before dawn. Road and bridge damages as well as several flooded vehicles were reported, but no injuries were known. Rainfall totals for the 2-3 hour duration storm included 2 south of New Braunfels 6.03 inches/ New Braunfels 3.98 inches.									
Guadalupe Co.	6 0300CST	0 0 ? ?							Heavy Rain
Temporary flooding of low areas on the north side of the county followed rains of 4 inches at Lake Dunlop to nearly 6 inches on the Guadalupe-Comal county line. The small area of the storm rains prevented any serious rise on the Guadalupe River. Small creeks and low areas did flood for several hours before sunrise.									

STORM DATA AND UNUSUAL WEATHER PHENOMENA

LATE REPORTS

LATE REPORTS

PLACE	DATE	TIME - LOCAL STANDARD	LENGTH OF PATH (MILES)	WIDTH OF PATH (YARDS)	NO. OF PERSONS		ESTIMATED DAMAGE		CHARACTER OF STORM
					KILLED	INJURED	PROPERTY	CROPS	

PLACE	DATE	TIME - LOCAL STANDARD	LENGTH OF PATH (MILES)	WIDTH OF PATH (YARDS)	NO. OF PERSONS		ESTIMATED DAMAGE		CHARACTER OF STORM
					KILLED	INJURED	PROPERTY	CROPS	

TEXAS, Southern

Gonzales Co. (Leesville to Bebe)	6	0315CST				0	0	6	4	Tornado (F1)
<p>As a severe thunderstorm moved east from Guadalupe Co., a small but damaging tornado formed on the southern edge of the storm leaving an intermittent path of damage from Leesville to Bebe. Hitting Leesville around 315 am cst, the twister destroyed a chicken farm on the edge of town. Several hundred chickens were killed. Residents said the tornado was preceded by a brief shower of hail and accompanied by a terrific roar. No injuries were reported although a number of residents were hit by breaking windows and debris as they slept. Several dozen houses were damaged (mainly roof and window) from Leesville to Bebe as the twister passed through farm areas. The weak tornado then moved directly through the community of Bebe doing considerable property damage. Several buildings were nearly deroofed, many windows broken and garages flattened. As in Leesville, a number of sleeping residents were showered by breaking windows and debris, but no serious injuries were reported. Just to the north of Bebe mobile homes were severely damaged also. In seconds fields to the east of Bebe were littered with debris as the twister headed a short distance past the town before dissipating.</p>										
Chambers Co.	6	0745CST								Funnel Clouds
<p>Building thunderstorms produced a rash of funnel clouds around the north side of Galveston Bay. Funnels were spotted passing over Anahuac and Mont Belvieu areas.</p>										
Liberty Co. (8S of Dayton)	6	0755CST	1/2	35	0	0	5	0	0	Tornado (F2)
<p>Just before 8 a.m. CST a funnel cloud moving north-northeast touched ground beside Farm Road 1409 about 8 miles south of Dayton. The tornado first dipped to earth over woods beside a group of houses and then moved very slowly through the neighborhood. Residents saw the tornado as it approached and described it as a brilliantly white funnel solid to the ground. The funnel hit no houses directly but severely damaged two that it passed closest to. One house was deroofed and boards driven through ceilings. The tornado lifted a short distance to the north-northeast.</p>										
Brazoria Co.	6	1515CST								Funnel Clouds
<p>Heavy thunderstorms produced several funnels aloft around the community of Brazoria.</p>										
Galveston Co.	6	1545CST								Funnel Clouds
<p>Several funnels formed off the west side of Galveston Island and moved east over the city.</p>										
Galveston Co. (near Hitchcock)	6	1550CST	7/10	25	0	0	0	0	0	Tornado (F1)
<p>A funnel cloud approached the Dickinson area and touched down several times as it skipped through the edge of the city. Touchdowns were seen beside Farm Road 2004 near the blimp base, near Mecom Ranch, and in a marsh close to the police station. Some minor damage to power lines was reported, but the twister hit no structures.</p>										
Jackson Co.	6	1600CST			0	0	?	?	?	Heavy Rain
<p>Downpours from late morning till mid afternoon dropped 4 to 5 inches of rain over the entire county. Edna measured 4.78 inches. By 4 pm cst flooding was setting in along most creeks. Low areas and many fields in the Edna and Ganado areas were swamped and some crop damages occurred. The Navidad River rose out of banks later in the day and remained in for several days afterward.</p>										
Wharton Co.	6	1615CST			0	0	?	?	?	Heavy Rain
Matagorda Co.	6	1615CST			0	0	?	?	?	Heavy Rain
<p>Daytime rains inundated most of these two counties causing widespread flooding along creeks, bayous, and in low poor drainage areas. Rainfall amounts included 9 inches at Danevang and 7.2 at Bay City. More than 5 inches fell over all areas of each county. Rain fell during the period noon to 6 pm cst and flooding began to become a problem just after 4 pm. Many roads were closed in both counties and most workers were unable to return home after work that afternoon. Scores of vehicles were flood damaged as they stalled in high water. Buildings in areas of poor drainage and in areas of heaviest rain were flooded including around Danevang and Bay City. Dollar losses were unknown. Soybean and rice fields suffered some damages.</p>										
Brazoria Co.	6	1615CST			0	0	6	0	0	Heavy Rain
<p>A slow moving cold front and repeated trains of thunderstorms over the county produced over 6 inches of rain throughout the whole county. Maximum rain was 9.54 inches at Angleton. Also reported were Lake Jackson 8.30, 6.75 West Columbia. An unofficial 10 to 11 inches was measured near Angleton. Rain fell 1-6 pm cst but greatest accumulation was in 3 hours 2-5 pm. Worst flooding was in the southwest half of the county where hundreds of rush hour motorists became stranded on flooded roads. Rapid ponding of water led to flooding of subdivisions and evacuations of houses around Angleton, Lake Jackson, Richmond, and Clute. Even Angleton High School began to take water as students were leaving for the day. Much road damage occurred and even Texas Hwy 36 was overwashed for a lengthy period through the evening.</p>										

TEXAS, Southern

Brazoria Co. (Richwood Community)	6	1630CST	4/10	40	0	0	4	0	0	Tornado (F1)
<p>A small tornado occurring on the edge of a heavy rain-producing thunderstorm touched down briefly north of Clute in the Richwood community. The mini-twister was observed by many people at a nearby shopping center as it tore through an area on County Road 223 between Farm Roads 2004 and 523. The tornado's short path took it close to a mobile home which was extensively damaged. Just before lifting it skimmed over a private airport where it damaged a couple of hangars and carried a small airplane some 200 yards into neighboring fields. There were no injuries.</p>										
Galveston Co.	6	1700CST			0	0	5	4	4	Heavy Rain
<p>Up to 8 inches of rain fell over south parts of the county during the afternoon, most during the period 2 to 6 pm cst. Widespread ponding of water made major thoroughfares impassable including access roads on IH 45 from Galveston to Dickinson. Many cars were submerged as they stalled and then were engulfed by the continuing buildup of water. Worst of the flooding commenced as evening rush hour was underway. Scattered instances of water seepage into businesses and houses occurred in Texas City, LaMarque, League City, Bacliff, Dickinson, and Galveston.</p>										
ValVerde Co.	11	1730 CST			0	0	5	0	0	Wind
ValVerde Co.	11	1800CST			0	0	4	3	3	Hail
<p>A severe thunderstorm formed in Mexico on the east slopes of the Sierras and moved southeast entering ValVerde County, Texas at 530 pm cst between Langtry and Comstock. It continued southeast through southern parts of the county during the next two hours. A strong downburst developed on the leading edge of the storm from near Comstock, across Lake Aimstad, over the north edge of Del Rio, to just north of Laughlin Air Force Base. Gusts to 65 mph were measured at Laughlin just before 645 pm. Scattered property damage was reported all along this path over a 3 to 5 mile width. Hail stones also fell over a narrow swath missing most populated areas but affecting the Air Force Base with 3/4 inch diameter stones.</p>										
ValVerde Co. to Kinney Co. (2N Laughlin AFB to 4N Brackettville)	11	1855CST	19	60	0	0	5	0	0	Tornado (F1)
<p>A funnel cloud formed on the west edge of a severe thunderstorm and was first spotted passing over a ranch 10 miles north of Del Rio at 615 pm cst. As the funnel moved east-southeast it was spotted several more times aloft until it was about 2 miles north of Laughlin AFB where (at 655pm cst) it began making an intermittent path on the ground. The skipping path continued for 2 miles in east ValVerde Co. over rangelands on the north side of Highway U.S. 90 and then for another 17 miles through sparsely populated country of Kinney Co. No structures were affected in ValVerde Co. although a swath of downed trees was evident. In Kinney Co. more trees were felled as the twister crossed the county line at 725 pm cst. A half dozen ranch buildings were demolished northwest and north of Brackettville. There were no injuries or actual damages to houses reported.</p>										
Edwards Co.	11	1900CST			0	0	4	?	?	Wind
Kinney Co.	11	1910CST			0	0	4	?	?	Wind
<p>A severe thunderstorm that moved through ValVerde Co. progressed east into south Edwards and north and central Kinney counties. Scattered wind damages were reported in these areas, mainly roof, window, powerline, and tree damage. In Brackettville 1.7 inches of rain fell in less than an hour after the wind blast hit.</p>										
Uvalde Co.	11	2120CST			0	0	6	5	5	Wind
Uvalde Co.	11	2130CST			0	0	5	5	5	Hail
<p>A series of severe thunderstorms that aimed at Uvalde Co. earlier in the evening as they passed through neighboring counties to the west for the most part weakened before moving into Uvalde Co. However, just after 9 pm cst another storm intensified greatly as it moved into the west edge of Uvalde Co. and eventually moved over the city of Uvalde and points east around 10 pm causing severe damages. In the city of Uvalde much damage occurred to roofs, windows, and vehicles from high wind gusts and wind-driven hail. At the airport several hangars were severely damaged, 2 airplanes destroyed, and 7 others damaged. Hail stones up to 1-3/4 inch diameter covered a swath some 7 miles wide from just west of Uvalde to Sabin. The hail shower duration of 20 minutes devastated 5000 acres of crops. Hail and wind damages surrounded not only Uvalde but also Knippa and Sabin. At Knippa 3 inches of rain fell in 30 minutes with the storm putting rises on local creeks.</p>										
Medina Co.	11	2240CST			0	0	4	?	?	Wind
<p>Strong gusts entered northwest Medina Co. as a severe thunderstorm moved east from Uvalde Co. The storm weakened as it moved into the county and passed just north of Hondo. Only rural areas were affected with scattered minor damages. Small hail stones were reported along with the wind.</p>										

STORM DATA AND UNUSUAL WEATHER PHENOMENA

LATE REPORTS

LATE REPORTS

PLACE	DATE	TIME - LOCAL STANDARD	LENGTH OF PATH (MILES)	WIDTH OF PATH (YARDS)	NO. OF PERSONS				ESTIMATED DAMAGE		CHARACTER OF STORM
					KILLED	INJURED	PROPERTY	CROPS	PROPERTY	CROPS	
TEXAS, Southern											
Travis Co.	12	0015CST	0	0	5	0					Wind
<p>A severe thunderstorm developed in the northwest corner of Travis Co. and produced damaging wind gusts as it tracked east over Lake Travis and the north edge of the city of Austin. The unusually prolonged winds lasted about 30 to 60 minutes over each location. Damages included many trees downed, docks and marinas on Lake Travis sunk or broken, building roofs and windows removed. The great number of downed trees caused many roads to be blocked for hours into the daytime. Particularly hard hit was the Hudson Bend area where winds were 75 to 80 mph. Countywide damages were put at \$200,000 for property.</p>											
Williamson Co.	12	0030CST	0	0	5	5					Wind
<p>The storm that hit north Travis Co. continued east into Williamson Co. passing over Cedar Park, Round Rock, and points east to Taylor. Countywide some \$300,000 property damage and \$100,000 crop damage were reported. In Cedar Park the 30 to 45 minute duration severe winds ripped off house roofs, and the upper part of one two-story house was partially sheared off. There were no injuries as residents reported that they were awakened by the onset of roaring winds and took shelter away from dangerous parts of their homes. Several greenhouses were destroyed and the Cedar Park Airport suffered hangar and airplane losses. In Round Rock similar roof damages occurred. At Brushy Creek Elementary School portable classrooms were destroyed and some \$75,000 damages were suffered by the school. Nearby Round Rock High School had its roof partly peeled. The winds south flattened crops east of Round Rock to the Taylor area. In Taylor more houses were damaged with businesses and barns losing roofs. Power lines from Cedar Park to Taylor were downed causing widespread electrical outages. Georgetown on the north edge of the wind blast measured gusts to 60 mph with lesser damages than areas to the south. The unusually noisy storm produced no known injuries.</p>											
Bexar Co.	12	0045CST	0	0	4	0					Wind
<p>Strong thunderstorm wind gusts caused scattered roof, tree, and window damages as a severe thunderstorm tracked west-to-east through the center of the county. The wind was followed by heavy rain of over 1 inch in less than an hour which flooded downtown San Antonio streets.</p>											
Comal Co.	12	early morning	0	0	?	?					Heavy Rain
Comal Co.	12	early morning	0	0	?	?					Lightning
<p>Thunderstorms from about 1 to 3 am cst dropped heavy rains which led to brief flash flooding on Dry Comal Creek near New Braunfels. The creek overwashed low roads from 2 to 5 am cst. Severe lightning strikes were reported in the New Braunfels and Hunter areas with damages to utility equipment and a few houses.</p>											
Brazos Co.	12	0330CST	0	0	4	0					Wind
<p>Severe thunderstorm wind gusts pushed over trees in the Bryan and College Station areas. Roof and window damages were reported but actual speed of strongest gusts was not known.</p>											
Nueces Co.	12	0845CST	0	0	5	?					Wind
Nueces Co.	12	Morning	0	0	4	0					Tidal Flooding
<p>Strong wind gusts began during the morning and lasted until nearly midday as a mesoscale low pressure system developed near the coastal bend area. Winds measured up to 59 mph at the airport and were estimated at even stronger near the beach. Wind related damages included many trees downed, power lines and poles snapped, and some roofing peeled. The strong southeasterly winds pushed tides above normal in Corpus Christi and Nueces Bays causing salt water flooding of some shoreline properties not behind the seawall. On Padre Island tides overswept beaches and closed some roads. The tides and winds combined to sink several pleasure boats at the Corpus Christi marina.</p>											
San Patricio Co.	12	0850CST	0	0	4	?					Wind
<p>Similar winds that affected Nueces Co. hit the San Patricio Co. area also.</p>											
ValVerde Co.	12	1650CST	0	0	5	?					Hail
ValVerde Co.	12	1745CST	0	0	5	?					Wind
<p>A series of severe thunderstorms formed on the U.S. Mexico border area of southwest Texas and progressed along a track eastward through ValVerde Co. giving the county prolonged and recurring severe weather episodes from just before 5 pm cst until nearly 9 pm. The storms did not form on a line but rather singular thunderstorm cells regenerated one-at-a-time and moved east or east-southeast along nearly parallel tracks through ValVerde Co.</p> <p>Hail swaths were numerous and included these: 450 pm cst north ValVerde Co. 1-3/4 inch diameter stones; 5-530 pm golfball hail Lake Amistad to north Del Rio area; 8 pm 3/4 inch hail Pandale and Juno. Roof and vehicles were damaged in these areas.</p> <p>Damaging wind gusts accompanied all the storms also during the 3 to 4 hour period of wild weather. Damages to buildings were reported at Pandale, Comstock, Lake Amistad, Del Rio, Laughlin Air Force Base, and rural areas. While thunderstorm wind gusts created widespread damages, there were 4 distinct tornadoes which created more intense damage paths embedded within the affected area (see separate ValVerde tornado entries).</p>											
TEXAS, Southern											
ValVerde Co.	12	1810CST	19	120	0	2	6	0			Tornado (F2)
<p>The unusually prolonged and severe thunderstorms for this area produced on this date led to many funnel clouds (often generated in multiple families under the same parent thunderstorm cloud) and caused a known total of 4 distinct tornadoes. The first severe thunderstorm that passed east near Langtry and Comstock may have formed a tornado on its southwest edge which first hit ground in Mexico. However, the first known point of touchdown for the tornado was just east of the Rio Grande canyon and north of Lake Amistad at just before 615 pm cst. The tornado moved nearly due east and crossed U.S. Hwy 90 at Spur 406 where it blew a truck and motor home off the road and injured two persons. There was a report that pavement was torn up by the tornado at that point also. The twister downed a line of power poles (width 20-25 poles). The funnel remained on a path toward the east and 3 miles past the highway it hit a ranch destroying buildings and windmills. It then crossed the Devil's River canyon and hit the Rouch Canyon Recreational Area on Lake Amistad where 1 house was destroyed and 6 damaged. A worker in the area described 3 smaller funnels aloft traveling with the tornado. Just after 7 pm the tornado was seen by a spotter as it crossed U.S. Hwy 277 north of Del Rio. It then headed out over remote areas and caused no further known damage.</p>											
ValVerde Co. (Del Rio)	12	1850CST	5	80	0	0	5	0			Tornado (F2)
<p>This twister was first sighted as a funnel aloft by National Weather Service personnel as it passed just to the north of Del Rio Airport. The funnel dropped to ground level at 650 pm cst in north Del Rio near U.S. Hwy 90 and Kings Way Drive. It did extensive damage to many businesses, several houses, and downed many power poles. Many roofs were uplifted, most windows in the area were broken, and in one case a concrete block walled was collapsed inward. The tornado moved quickly into a grassy field from its initial touchdown on the edge of the city, and continued on an almost due east path for several miles. Damage in the Del Rio neighborhood was put at \$300,000. Residents in the area said they clearly saw the tornado coming and heard it at close range which prompted most to take cover. There were no reported injuries.</p>											
ValVerde Co. (Del Rio)	12	1910CST	3	50	0	0	5	0			Tornado (F1)
<p>A weak tornado skipped about 3 miles through the center of center of Del Rio passing not far from the path of a stronger tornado which took a parallel track over the north part of Del Rio minutes earlier (See above entry) this second tornado to hit the city was also visually spotted by National Weather Service personnel as it formed and approached the city. Although the damage from this tornado was less intense than the preceding one. It passed over more buildings causing roof, window, vehicle, powerline, and tree damage.</p>											
ValVerde Co. (10N Laughlin AFB)	12	1955CST	1 1/2	40	0	0	0	0			Tornado (F1)
<p>Just before 8 pm cst personnel assigned to Laughlin Air Force observed a tornado as it formed groundward north of the base. Later investigation showed that the twister moved over rangeland about 10 miles north of the base just west of the ValVerde-Kinney Co. line. Apparently its path was short and it hit no structures.</p>											
Travis Co.	13	0100CST			0	0	5	0			Wind
Travis Co.	13	0105CST									Funnel Cloud
Williamson Co.	13	0125CST									Funnel Clouds
<p>A severe thunderstorm developed over northwest Travis Co. and caused damaging wind gusts for a short while around Jonestown and eastward. Winds downed power lines and trees. A funnel cloud formed from the same thunderstorm and passed east of Jonestown and later was seen over Williamson Co. near Cedar Park. A separate funnel was spawned from the same storm near Walburg. Apparently neither funnel touched ground.</p>											
Hays Co.	13	0145CST									Funnel Cloud
<p>A funnel formed from a heavy thunderstorm near Buda but did not touch ground.</p>											
Bastrop Co.	13	0215CST			0	0	5	4			Wind
<p>Thunderstorm winds damaged utility lines and poles, farm buildings, windows and house roofs. Path of the storm winds was west to east through the Cedar Creek community. In Cedar Creek where most damage was reported several businesses and mobile homes were heavily damaged.</p>											
Lee Co.	13	0235CST			0	0	4	4			Wind
<p>Severe thunderstorm winds continued into Lee Co. from neighboring Bastrop Co. The spotty intermittent gusts caused most concentrated damage around the town of Hills. Many farms in the area were damaged, some barns deroofed, fences blown down, and crops damaged.</p>											
Gonzales Co.	13	0330CST			0	0	4	?			Wind
<p>High winds hit the city of Gonzales about 330 am cst as a thunderstorm moved through. Lots of damage occurred at the city Independence Park where big trees were blown down, park buildings damaged, and power lines severed. Neighboring residences also reported damage. U.S. Hwy 183 was closed for the morning because of large trees and debris which the storm deposited on it.</p>											

STORM DATA AND UNUSUAL WEATHER PHENOMENA

LATE REPORTS

LATE REPORTS

PLACE	DATE	TIME - LOCAL STANDARD	LENGTH OF PATH (MILES)	WIDTH OF PATH (YARDS)	NO. OF PERSONS				ESTIMATED DAMAGE		CHARACTER OF STORM
					KILLED	INJURED	PROPERTY	CROPS	PROPERTY	CROPS	

PLACE	DATE	TIME - LOCAL STANDARD	LENGTH OF PATH (MILES)	WIDTH OF PATH (YARDS)	NO. OF PERSONS				ESTIMATED DAMAGE		CHARACTER OF STORM
					KILLED	INJURED	PROPERTY	CROPS	PROPERTY	CROPS	

TEXAS, Southern

Travis Co.	<p>13 0330CST 0 2 6 4 Heavy Rain Thunderstorm deluges pushed creeks in the city into dangerous flash flooding during early morning hours. Minor flooding began around 145 am and had grown serious between 3 and 4 am. There were several rounds of heavy rains, the first midnight to 2 am and subsequent rains 3 to 7 am. Storm totals to 6 or 7 am included NW Austin 6.04 inches/Northwest Park 5.27/ Municipal Airport 3.3.</p> <p>Worst flooding was on Shoal Creek as a result of the 6+ inches which fell in NW Austin. This same creek was responsible for severe flash flooding and deaths almost one year earlier. Creekside houses along Shoal Creek and many businesses near the lower end of the creek on Lamar Blvd were flood damaged. Evacuation of houses was hastily accomplished just before dawn and there was no loss of life and only two minor injuries. The injuries were on Bull Creek where a car was swept off a low water crossing on Spicewood Springs Road. The woman and her small son escaped just before their car was carried away. In east Austin Walnut Creek forced evacuation of a mobile home park. Dry Creek rose sudden to and cut off roads. Most flooding subsided quickly around 9 am.</p> <p>Altogether damages were put a \$2 million. Most of the affected area was in Austin city limits and included various degrees of damage to 150-200 buildings, streets and bridges, and vehicles.</p>
Kerr Co.	<p>13 0430CST 0 0 4 0 Heavy Rain Early morning flash flooding hit the upper Guadalupe River and tributary creeks in Kerr Co. after 3-4 inches of rain fell after midnight. At Hunt the River topped the main highway bridge as a 12-foot sudden rise developed. Low water crossings on feeder creeks upstream from Kerrville also were blocked through the morning hours. There were no reported injuries.</p>
Milam Co.	<p>13 0440CST 0 0 ? ? Wind Damaging wind gusts were reported on the north side of the city of Cameron.</p>
Bandera Co.	<p>13 0450CST 0 0 4 0 Heavy Rain A well-defined flash flood wave developed just before 5 am and moved down the Sabinial River during the day. The sudden rise blocked most river crossings between Vanderpool and Sabinial. Some 3.35 inches rain fell in 1 hour.</p>
Williamson Co.	<p>13 0450CST 0 2 6 ? Heavy Rain Just before 5 am est flash flooding began in northwest Williamson Co. as heavy thunderstorm rains dropped 6 inches northwest of Round Rock, 4.9 at Cedar Park, and 4.9 at Round Rock. Worst flooding was along Lake Creek and Davis Spring Branch. Nearly \$1 million damage county-wide was reported with over \$500,000 in city of Round Rock. About 30 houses on Lake Creek in Round Rock were flooded, some with 3-4 feet of water inside and severe damage to contents. A number of residents had to be rescued when trapped by the sudden early morning flood wave. As the Lake Creek waters moved downstream they fed a large rise into Bushy Creek below Round Rock in the afternoon. At Rice's Crossing around noon est two near-drownings occurred. One man driving a truck became trapped on the flooded bridge and eventually was swept downstream. A second man dived into the creek and rescued the first, but both suffered from water ingestion and exhaustion.</p>
Hays Co.	<p>13 0500CST 0 0 5 4 Heavy Rain Overbank flash flooding along the San Marcos River through San Marcos started in the early morning and was prolonged through the afternoon as several separate rises moved down the Blanco River and emptied into the San Marcos. Many creeks in the rural parts of north Hays County also overtopped bridges and low water crossings in the morning. In the San Marcos area Puragatory Creek experienced the worst flooding as it overflowed into creekside property. Willow Creek also rose substantially. Damages were mainly to vehicles, roads, bridges and a few buildings. Losses were put at near \$200,000.</p>
Bastrop Co.	<p>13 0500CST 0 0 5 ? Heavy Rain Some 4-6 inches of early morning rains caused flash flooding on county creeks. Center of heaviest rain was around the Red Rock community. Some damage to vehicles, fences, roads, and crops was reported in rural areas.</p>
Colorado Co.	<p>13 0530CST 0 0 4 ? Wind A small localized swath of wind damage was reported in the Columbus area. One house was badly damaged with windows blown out and roof torn off. Lesser damage occurred to neighboring structures.</p>
Fayette Co.	<p>13 0600CST 0 0 4 5 Heavy Rain Rainfall after midnight totalled 4 to 6 inches and caused flash flooding on county creeks. Reported damages included fences, roads, and bottomland crops. County-wide damages were put at \$40,000 for property and \$50,000 for crops.</p>

TEXAS, Southern

Caldwell Co.	<p>13 0600CST 1 0 5 5 Heavy Rain Rain fell mainly before dawn and totalled 3-6 inches over the county. Main damages were to roads, fences and crops. Losses were put around \$60,000 for property and \$50,000 for agriculture. On County Road 197 near the town of Seawillow, flooding from both Plum and Daniel's Creeks overswept the road. Around 3 pm, some 5 to 6 hours after rain had ended but with creeks still flooded, an elderly man drove his pickup truck into swift water and was swept away and drowned.</p>
Walker Co. Walker Co.	<p>13 0630CST 0 0 4 0 Wind 13 Midday 0 0 4 0 Heavy Rain A thunderstorm moving through Huntsville early in the morning caused scattered mostly light property damage from high wind gust. Continuing rains after the initial thunderstorm pushed Town Creek out to banks around midday and did minor damages to adjacent streets, bridges, and property through Huntsville.</p>
Burleson Co.	<p>13 Early morning 0 0 ? ? Heavy Rain In Caldwell and Somerville deluges closed and flooded major thoroughways while damaging cars and road surfaces. Some seepage into buildings in low spots was reported.</p>
Lee Co.	<p>13 0640CST 0 0 5 4 Heavy Rain Heavy rains of over 5 inches centered across the west half of the county caused flash flooding of creeks and low areas. Rains fell after midnight and flooding commenced before 7 am est. Yegua Creek experienced serious flooding by 8 am and continued in flood through the next night. Many rural roads were closed as well as major highways U.S. 290 east of Giddings and U.S. 77 and south of Giddings. In Giddings flooding of low areas led to early morning evacuations but water stopped just short of caused serious damages.</p>
Montgomery Co.	<p>13 0645CST 0 0 4 0 Wind Severe thunderstorm wind gust caused damages south of Conroe. Area affected was mainly rural and woodlands with mostly downed trees and power lines.</p>
Milam Co.	<p>13 0645CST 0 0 5 5 Heavy Rain Predawn rains produced flash flooding over the west part of the county. Fences, roads and some crops were damaged. Losses were put at \$150,000 for property and \$50,000 for crops.</p>
Travis Co.	<p>13 0700CST 0 0 4 0 Wind A second thunderstorm for this morning (the first was around 1 am) produced damaging wind gusts in the Lake Travis area. Winds measured over 50 mph on the lake and were somewhat stronger over nearby hills. Scattered property damage occurred all across the lake area and extended east to the Burroughs Cove area in Austin.</p>
Comal Co. Comal Co.	<p>13 0700CST 0 0 4 3 Hail 13 Morning 0 0 ? ? Heavy Rain A severe thunderstorm cell dropped golfball sized hail north of New Braunfels causing some damage to gardens and cars. Heavy rain which accompanied the storm totalled 3.38 inches at Spring Branch, 3.07 at Canyon Lake. River Road along the Guadalupe River was closed at crossings from mid-morning till afternoon as brief flash flooding came down feeder creeks below Canyon Dam. Some damage to roadways was reported.</p>
Brazos Co.	<p>13 0700CST 0 1 5 ? Heavy Rain Downpours of 3 to 5 inches in a few hours hit the central and north part of the county. By 7 am est the rains had led to flash flooding of creeks and low areas, as well as urban flooding in Bryan-College Station at rush hour. In the Bryan area some apartments suffered water seepage and dozens of cars were stalled or flooded out. In the town of Tabor a man was rescued with only minor injuries after his car was submerged in Wickson Creek.</p>
Hays Co. Caldwell Co.	<p>13 0815CST 0 0 ? ? Wind and Hail 13 0815CST 0 0 ? ? Wind and Hail A severe thunderstorm caused 1 inch diameter hail and damaging winds along the Hays-Caldwell Countyline.</p>
Washington Co. (Gay Hill to Sandy Hill)	<p>13 0815CST 1 1/2 30 0 0 4 0 Tornado (F1) A small tornado darted east through the Gay Hill and Sandy Hill areas then disappeared according to the sheriff's office. It was first seen forming on the Washington Co. side of Lake Somerville near Overlook Marina. A park ranger watched the funnel touch down near the lake shore and move through the Holiday Oaks subdivision. It remained quite weak and caused only roof, window, and tree damage from the lake to Gay Hill. It crossed Hwy TX 36 and was next seen near Sandy Hill where a few small buildings were damaged along with severed power lines.</p>
Montgomery Co. (Panorama)	<p>13 0955CST 2/10 20 0 0 4 0 Tornado (F1) A small twister briefly touched down in the small community of Panorama north of Conroe. It did not directly hit any buildings but did down many trees and power lines. Point of touchdown was observed just off Hwy IH 45.</p>

STORM DATA AND UNUSUAL WEATHER PHENOMENA

LATE REPORTS

LATE REPORTS

PLACE	DATE	TIME - LOCAL STANDARD	LENGTH OF PATH (MILES)	WIDTH OF PATH (YARDS)	NO. OF PERSONS				ESTIMATED ¹ DAMAGE		CHARACTER OF STORM
					KILLED	INJURED	PROPERTY	CROPS	PROPERTY	CROPS	

PLACE	DATE	TIME - LOCAL STANDARD	LENGTH OF PATH (MILES)	WIDTH OF PATH (YARDS)	NO. OF PERSONS				ESTIMATED ¹ DAMAGE		CHARACTER OF STORM
					KILLED	INJURED	PROPERTY	CROPS	PROPERTY	CROPS	

TEXAS, Southern

Live Oak Co. (2nw George West)	13	1020CST	3/10	25	0	0	0	0	0	0	0	Tornado (F1)
Two funnel clouds were seen passing aloft west of George West. Spotters followed the funnels and saw one develop briefly to ground level about 2 miles northwest of George West. This was open country and no damage occurred.												
Madison Co.	13	1100CST			0	0	?	?				Heavy Rain
Morning rains onto wet ground caused creeks to flood by 11 am cst, however continuing rains through the afternoon worsened flooding of creeks through rural areas. By 5 pm cst Madisonville had recorded 6.5 inches for the day. Flood impact was not reported.												
LaVaca Co.	13	1145CST			0	0	5	5				Heavy Rain
Morning deluges led to flash flooding on creeks and put a flood crest on the Lavaca River through Hallettsville and downstream. Rainfall totals included Moulton 8.0 inches, Shine 7.5 inches. In Hallettsville the river surged into streets as it crested out of banks but did not do serious damage as did the flood of Aug. 81. In the east part of the county the Navidad River rose out of banks too and crested some 10 feet over bankfull through the county. Flood damages were probably minimized by the fact that the previous flood of Aug. 81 had largely removed structures from vulnerable spots which were flooded on this date.												
Grimes Co.	13	NoonCST			0	0	?	?				Heavy Rain
Rains of 5 inches around midday were recorded throughout the county. Flooding of creeks and low areas affected much of the county with some property damage reported around Carlos.												
Victoria Co.	13	1230CST			0	0	5	?				Heavy Rain
Continuing rains in the morning saturated ground. Then from noon to 1 pm cst 2.42 inches of rain fell at Victoria. Sheets of water suddenly covered flat areas and most creeks surged out of banks. Students were stranded in the high school and water seeped into a number of buildings throughout Victoria.												
Victoria Co. (3e Victoria)	13	1250CST	8/10	40	0	0	5	0				Tornado (F1)
As heavy rains were falling in the area, a small tornado developed and touched down in the Victoria area. Hitting about 1 mile east of Loop 175, the mini-twister moved ssw to nne. It damaged one mobile home, trees, and fences in the area. An old outdoor movie theater was heavily damaged. Observers said the funnel, surrounded by heavy rain, mainly skimmed over ground level and did not hit any houses directly.												
Hardin Co.	13	1315CST			0	0	5	0				Wind
Hardin Co.	13	1615CST			0	0	?	?				Heavy Rain
A severe thunderstorm moving east caused wind damage along a path just to the north of Silsbee. Gusts damaged some houses and downed trees. Torrential rains followed the wind storm and in a few hours rainfall totals included 4.56 inches at Silsbee. Over 3 inches fell during the one hour period 1-2 pm. By 430 pm water was threatening houses in the Lumberton area with other scattered occurrences of flooding in low areas throughout the county. Sandbagging along the Pine Island Bayou probably helped hold back some flood waters.												
Montgomery Co.	13	1330CST			0	0	5	0				Heavy Rain
Up to 5 inches of rain during midday caused flooding over south parts of the county. Water surged over creek banks as well as filled up low areas during early afternoon. Some houses in Oak Ridge North and Timberlake-Timberidge areas reportedly had water damage. Roads southeast of Conroe were closed for a while as water overtopped bridges.												
Calhoun Co. (Port Lavaca)	13	1345CST	2/10	35	0	0	5	0				Tornado (F1)
As heavy rainstorms were in progress over the city, a small tornado formed and touched down in Port Lavaca. Witnesses close to the twister said it created spectacular sparks as it severed power lines. The tornado damaged several mobile homes, rolled a few cars, and damaged buildings at the county fairgrounds shortly before 2 pm. Frame houses in the vicinity had window and roof damages. There were no reported injuries.												
Calhoun Co.	13	1415CST			0	0	4	?				Heavy Rain
Deluges of 2.6 inches at Port Lavaca and 3.2 inches at Point Comfort in an hours time led to flooding of low areas. In Port Lavaca Lynns Bayou overflowed and many cars were flooded. Water seeped into a few buildings and some crops were damaged.												

TEXAS, Southern

Jasper Co. (7NW Buna- 5SW Kirbyville)	13	1420CST	8 1/2	150	1	1	5	4	0	0	0	Tornado (F3)
The strongest tornado in many years to hit Jasper Co. touched down southwest of Kirbyville killing a woman and injuring an elderly man. The tornado spun out of a short line of thunderstorms on the advancing edge of a large area of heavy rain. The tornado itself was buried within a heavy rain band and persons close to the twister said they saw and heard it just seconds before it hit. Three separate tornadoes were generated on parallel tracks through the area, but the first was the strongest.												
Point of touchdown was in the Cairo Springs community at 220 pm cst (7NW of Buna) where it damaged a frame house and totally destroyed a mobile home. The mobile home was occupied by an elderly man injured as the shattered house was tumbled for over 200 yards through fields toward the northeast. Three barns, fences, and trees were damaged in the area also. The tornado then entered a heavily wooded area and the damage path appeared intermittent as it the forest disrupted the low level vortex. Then as the tornado emerged into a pasture on the west side of U.S. Highway 96 southwest of Kirbyville, it gathered into a strong well-defined ground-based vortex once again. The funnel moved over the pasture and directly hit another mobile home. This one occupied by a woman who was killed when the house was shattered and carried northeast. Several farm animals were killed at the site also. The tornado crossed U.S. 96 without hitting any cars, traveled another mile through pastures, and ended 2 miles south of Call Junction.												
Jasper Co. (Kirbyville)	13	1430CST	6 1/2	60	0	0	5	0				Tornado (F2)
The second tornado to come from the thunderstorm passing over central Jasper Co. was not quite so strong as the first (see above entry) and moved on a parallel track about 8 miles to the north. As rescuers raced to the site of the first tornado touchdown, they reported seeing the second funnel forming to the north. The tornado made an intermittent path of weak to occasionally strong wind damage beginning at the west end of Farm Road 82 some 7 miles west-southwest of Kirbyville and continuing northeast toward Kirbyville. The tornado passed near several houses and mobile homes but hit none directly. It broke a power line west of Kirbyville, tore up fences, and snapped pine trees. At the end of its track it skirted the south edge of Kirbyville damaging roofs, totally destroying ahngar at the airport. The tornado path was not discernible eastward from Kirbyville where the funnel passed over heavily wooded areas.												
Jasper Co. (2NW Kirbyville)	13	1435CST	3	45	0	0	4	0				Tornado (F1)
The third and weakest tornado to be generated by the thunderstorm moving past Kirbyville hit ground west of Kirbyville near Farm Road 1013 and moved northeast for 2 miles. The weak twister skirted the northwest edge of Kirbyville, damaging several houses. The twister, just after crossing Farm Rd. 52, hit a house on Trout Creek doing considerable damage and up-lifting its roof. The funnel either weakened or went aloft after reaching Hwy U.S. 96 north of Kirbyville.												
Brazoria Co. (Angleton)	13	1440CST	2/10	25	0	0	5	0				Tornado (F1)
A flurry of funnel clouds was spotted all over the countryside around Angleton as a line of thunderstorms became positioned across the area. One confirmed touchdown occurred within the city of Angleton. Residents described a "long skinny tail" dipping earthward in a northside neighborhood of Angleton. The small twister destroyed carpports, flipped off house roof shingles, broke a few windows, and battered several cars, but caused no injuries. The funnel skipped east and lasted about a minute.												
Jackson Co.	13	1500CST			0	0	?	?				Heavy Rain
Damages were not specifically reported, although widespread flooding of countryside covered crops and blocked roads in the county. Rainfall responsible for the flooding totalled 5.53 inches at Edna. Vehicles were flood damaged on low roads in the Edna and Ganado areas during the afternoon downpours.												
Jefferson Co.	13	1515CST			0	0	5	0				Heavy Rain
Torrential thunderstorm rains totalled 5.38 inches over north Beaumont between 130 and 5 pm cst. Flooding became a problem as water ponded deeply by 315 pm. Other areas flooding included Nederland with 4.38 inches with lesser rain in Port Arthur. Cars stalled, water seeped into some businesses and homes as water built up in streets, and evening commuters were stranded. Pine Island Bayou and Hildebrand Bayou both rose overbanks during the rainstorm and continued in flood for several days afterward.												
Brazoria Co. Brazoria Co.	13	1530CST			0	0	4	?				Heavy Rain
	13	1545CST			0	0	4	0				Lightning
Rainstorms created flooding but damages were not so severe as storms over the same area the previous week. Some 4 inches of rain fell noon to 6 pm at Angleton causing bad street flooding and putting water again into some low lying buildings. At Freeport downpours were unusually heavy with a total of 6 inches for the afternoon. This included one downpour of nearly 3 inches in 20 minutes. Workers were stranded at the jobs unable to move through deeply flooded streets of Freeport, Clute, Lake Jackson, and Angleton. Intense lightning accompanied the downpours. Near the town of Brazoria lightning hit and heavily damaged a house.												

STORM DATA AND UNUSUAL WEATHER PHENOMENA

LATE REPORTS

LATE REPORTS

PLACE	DATE	TIME - LOCAL STANDARD	LENGTH OF PATH (MILES)	WIDTH OF PATH (YARDS)	NO. OF PERSONS ESTIMATED DAMAGE				CHARACTER OF STORM
					KILLED	INJURED	PROPERTY	CROPS	

PLACE	DATE	TIME - LOCAL STANDARD	LENGTH OF PATH (MILES)	WIDTH OF PATH (YARDS)	NO. OF PERSONS ESTIMATED DAMAGE				CHARACTER OF STORM
					KILLED	INJURED	PROPERTY	CROPS	

TEXAS, Southern

Harris Co.	13 1545CST				0	0	5	0	Heavy Rain
Harris Co.	13 Afternoon				0	0	4	0	Tidal Flooding
Harris Co.	13 Afternoon				0	0	4	0	Lightning
Harris Co.	13 1600CST				0	0	4	0	Wind

A line of thunderstorms caused prolonged severe weather and heavy rain over Harris County and the metropolitan Houston area. Sudden rains of over 3 inches in a short time flooded low areas and streets. Worst hit was southeast and southwest sections of Houston where 3 feet of water piled up in intersections. Some 90 school buses carrying students home became as the heavy rain created sudden flooding. Severe traffic problems resulted as thousands of cars were stranded and flooded at evening rush hour. Localized with gusts with the storms downed trees and scattered debris, but caused no serious property damage.

Persistent southeast winds preceding and during the storms pushed tides to 3.8 feet MSL along upper Galveston Bay. This caused a half dozen houses in the Brownwood section of Baytown to flood as tides spilled across Bayshore Drive. The high tides also inhibited drainage and allowed rainfall build up to flood low areas farther inland. Similar drainage problems affected Channelview where tides pushed up the Houston Ship Channel as heavy rains fell overhead.

All over Harris Co. frequent lightning strikes damaged utility equipment.

Harris Co.	13 1600CST								Funnel Clouds
------------	------------	--	--	--	--	--	--	--	---------------

By 4 pm cst at least 10 funnel clouds had been reported over the area during thunderstorms, but there was no evidence of any touchdowns.

Orange Co.	13 1615 CST				0	0	?	?	Heavy Rain
------------	-------------	--	--	--	---	---	---	---	------------

From 2 to 6 pm some 4 inches of rain fell over the area. Mauriceville registered 4.2 inches. Flooding affected Orange, Bridge City, and Vidor.

Galveston Co. (Port Bolivar)	13 1620CST	3/4	30		0	0	5	0	Tornado (F1)
------------------------------	------------	-----	----	--	---	---	---	---	--------------

At 420 pm cst a small funnel dipped down and destroyed a trailer home but caused no injuries. The same funnel moved east over Highway 87 toward Crystal Beach. Heavy rain followed the tornado.

Galveston Co.	13 1625CST				0	0	5	0	Wind
---------------	------------	--	--	--	---	---	---	---	------

A severe thunderstorm, embedded in a large line of other heavy-rain-bearing storms, created high wind gusts over south Galveston Co. Rather than typical short-lived gusts, these squally episodes caused prolonged high winds which measured 57 mph at San Luis Pass and 60 mph at the Galveston National Weather Service Office. Winds broke windows in Galveston and caved in a few store walls in the downtown area. Winds were probably even stronger over adjacent Galveston Bay and mainland areas. At Texas City hundreds of trees were downed, siding and roofing were peeled from many houses, windows blown in, cars damaged by blowing debris, and several large trucks were toppled from highways. Some larger frame buildings (a church and several businesses) sustained severe roof and wall damage (F2).

Galveston Co. (City of Galveston)	13 1630CST	6/10	30		0	0	5	0	Tornado (F1)
-----------------------------------	------------	------	----	--	---	---	---	---	--------------

As widespread high winds were affecting the area, one small funnel was observed to form and hit ground in Galveston. The mini-twister dipped down at 2700 Avenue K where it severed power lines, damaged several houses and businesses on adjacent Broadway, and rolled 10 parked cars. The roaring funnel headed out over water.

Cameron Co.	14 0250CST				0	0	5	?	Wind
Cameron Co.	14 0330CST				0	0	4	?	Heavy Rain

A very heavy thunderstorm raced eastward over Cameron Co. intensifying into a severe storm as it approached Brownsville. At 250 am cst damaging wind gusts over the city overturned a few mobile homes, blew over signs, bent lightposts, collapsed a brick wall at a construction site, and damaged four light aircraft at a small airport.

Rains which followed the wind blast dumped almost 3 inches in 30 minutes on the city. Water immediately ponded deeply in low areas causing severe street flooding, flooding many parked cars, and reportedly flooding a few houses.

Harris Co.	14 Afternoon				0	0	4	0	Tidal Flooding
------------	--------------	--	--	--	---	---	---	---	----------------

For the second day in a row strong southeast winds pushed tides to 3.8 feet MSL and caused salt water to overflow Bayshore Drive. The same houses affected the day before were reflooded around 5 pm cst after a brief respite when waters drained earlier in the day. This flood episode only lasted about an hour when winds subsided.

Montgomery Co.	14 1930CST				0	0	5	0	Flooding
----------------	------------	--	--	--	---	---	---	---	----------

Heavy rains the previous day put a rise on Spring Branch Creek, but the flood crest remained mainly in remote woods until a day later. Around 730 pm cst the creek began to spill out of banks near New Caney. Soon a rapid surge of water inundated 20-30 houses in 2 subdivisions just northwest of town. Some houses sustained serious flood damages. The quickness of the rise along with the lengthy delay of the major rise after the day-earlier rains caused many residents to be trapped inside their houses. There were no injuries, however, and all were rescued by boats. The creek crested the next morning and fell slowly for another few days.

TEXAS, Southern

Bexar Co.	16 1845CST				4	15	5	5	Heavy Rain
Bexar Co.	16 1900CST				0	0	4	0	Hail
Bexar Co.	16 1900CST				0	0	4	0	Wind
Bexar Co.	16 1930CST				0	0	4	0	Lightning

The north and west sides of Bexar Co. and the north and west suburbs of the city of San Antonio were hit by a killer thunderstorm on this Sunday evening. The 2-3 hour duration storm put rampaging creeks over urban streets killing 4 persons, injuring 15, and prompting scores of rescues and narrow escapes from the surging flash floods.

Several factors caused the storm to be deadly. The amount of rain over the storm center totalled 5 inches, but more importantly it fell in about 90 minutes over each spot along the storm track. The storm hit the hilly, rocky terrain of the Balcones Escarpment which is more prone to flash flooding than areas a few miles farther south. The ground in the affected areas was already very wet due to a 5 to 7 inch rain that fell from a similar storm 10 days earlier. The storm hit during a late Sunday afternoon when many persons were out for weekend recreation.

The storm began around 5 pm cst on the north side of Bexar Co. It remained stationary at first and then took an unusual, slow southward movement, almost directly into the prevailing windflow. The greatest deluges fell from 6 to 7 pm cst, and flash flooding had begun of serious magnitude by 645 pm. The first deaths were reported to have occurred between 7 and 8 pm cst on Leon Creek near the University of Texas at San Antonio. A young woman was killed when her pickup truck stalled and was swept away at a flooded low water crossing. A young man too was killed in the same incident as he attempted to save the woman. Less than an hour later on the west side of San Antonio another young woman, a passenger in a car, was drowned when swept off a flooded bridge on Potranco Creek near Hunt Lane. The fourth death also was a motorist washed off U.S. Hwy 90 at Potranco Creek. Area residents said this was the first time over 20 years that Potranco Creek had topped the highway. Over 100 vehicles were caught in deep swift water and some 15 motorists escaped with mainly minor injury. Around 2 am Medio Creek surged into a trailer park in southwest Bexar Co. routing 30-40 people out of their homes in darkness. The storm created large hail and high winds briefly over northwest Bexar Co. Lightning set several house fires, damaged a church, and knocked out power in north San Antonio. On Cracal Creek a group was rescued as waters knocked a church off its foundation.

Frio Co.	16 1825CST				0	0	4	5	Hail
----------	------------	--	--	--	---	---	---	---	------

A single thunderstorm over Frio Co. moved slowly south over the Dilly area. Hail stones about 1-inch diameter fell in great quantities, piling up several feet deep where drifted by rain, and pounding area crops and vehicles.

Uvalde Co.	16 2015CST				0	0	4	4	Hail
Uvalde Co.	16 2100CST				2	1	3	0	Heavy Rain

A thunderstorm, small in areal size but very intense, began over northwest Uvalde Co. and moved slowly southward directly over the Nueces River canyon. The storm was similar in character to one that hit Bexar Co. and San Antonio a short while earlier. Hail stones up to 1 inch diameter fell with intense rain. Some vehicle and crop damage was noted.

The narrow band of heavy rain caused the most problems as it was situated directly along the river. At 19-Mile Crossing northwest of Uvalde two persons were killed around 9 pm cst. As a driver attempted to ford the already flooded crossing, water pushed the pickup truck off the highway drowning a young man and a child. A woman occupant of the car escaped with minor injuries. The 5 to 7 foot rise on the Nueces River was very localized and fed by large rises on local creeks, mainly Long Hollow and French Creeks.

Rainfall maximum was 7 inches on Long Hollow Creek at the Nueces River and fell in 2 hours time. Some 4 to 5 inches fell on a narrow swath north and south of that point.

Maverick Co.	16 2055CST				0	0	?	?	Hail
Maverick Co.	16 2055CST				0	0	?	?	Wind

Just before 10 pm cst hail stones of 3/4 to 1-1/2 inch diameter fell from a storm that moved south just east of Eagle Pass. Strong gusts damaged property east of the city while the hail damaged some crops.

Webb Co.	17 0300CST				0	0	5	4	Heavy Rain
----------	------------	--	--	--	---	---	---	---	------------

A thunderstorm moving slowly over northeast Webb Co. dropped heavy rains after midnight. This storm couple with another round of rain earlier led to flooding of rangelands. Overnight rainfall totals unofficially were reported at 10 inches in an area bounded by Hwy. 59 and Farm Road 2895. Ranch lands were inundated along Galiche, El Gato, Black, Beccero, Salado, Los Olmos, and San Casimiro Creeks. Deep water washed over Hwy 59 and FM Road 2895 but no injuries were reported.

STORM DATA AND UNUSUAL WEATHER PHENOMENA

LATE REPORTS

LATE REPORTS

PLACE	DATE	TIME - LOCAL STANDARD	LENGTH OF PATH (MILES)	WIDTH OF PATH (YARDS)	NO. OF PERSONS		ESTIMATED DAMAGE		CHARACTER OF STORM
					KILLED	INJURED	PROPERTY	CROPS	

PLACE	DATE	TIME - LOCAL STANDARD	LENGTH OF PATH (MILES)	WIDTH OF PATH (YARDS)	NO. OF PERSONS		ESTIMATED DAMAGE		CHARACTER OF STORM
					KILLED	INJURED	PROPERTY	CROPS	

TEXAS, Southern

Cameron Co.	17 0800CST				0	0	5	6	Wind and Hail
Cameron Co.	17 1830CST				0	0	5		Heavy Rain
<p>A severe thunderstorm complex southeast and created high winds over eastern Cameron Co. Gusts officially measured 91 mph at the Port Isabel Coast Guard Station. Much property damage occurred over east parts of the county including at Brownsville, Port Isabel, Rio Hondo, and San Benito. Many roofs, windows, trees, signs, and mobile homes suffered. At Port Isabel boats were torn loose from moorings and vehicles parked outside were damaged by blowing debris. At Camp Perry north of Rio Hondo particularly severe wind damage was reported. Crops were damaged in the Rio Hondo and San Benito areas as the high winds combined with 1/2 to 3/4 inch diameter hail. Following the high winds was deluge of 2-1/2 to 3-1/2 inches of rain in an hour's time. In the city of South Padre Island the rain flooded many cars, caused sand erosion, and flooded a few buildings.</p>									
Willacy Co.	17 0810CST				0	0	4	5	Wind
Willacy Co.	17 0900CST				0	0	?	5	Rain
<p>Severe thunderstorm winds and intense rain hit south Willacy Co. Winds combined with rain and small hail caused extensive crop damages, flattening many acres of cotton and sorghum around Lyford. Raymondville and Lyford both registered over 3 inches of rain in less than an hour. Water piled up over a huge area of the flat country and primed the landscape for serious flooding from another storm which hit 6 days later (see separate entry). Winds knocked down many power lines and poles in the Santa Monica area. Elsewhere scattered property damages were reported.</p>									
Fort Bend Co.	17 1615CST				0	0	4	?	Heavy Rain
<p>Afternoon downpours flooded streets deeply in Rosenberg and closed major highways including U.S. 90A and Texas 36.</p>									
Harris Co.	17 1630CST				0	0	4	0	Heavy Rain
<p>Torrential rains hit the Houston area during afternoon rush hour. Many cars were stalled and some damaged as water rose to windshield heights in low intersections. Worst flooding was in southwest and northeast parts of Houston where pockets of rain totaled 3 inches in a few hours. A dozen of more houses were reported flooded in a subdivision near Spring. In northeast Houston U.S. 59 was impassable with deep water and hospital flooded as water rose from a bayou.</p>									
Harris Co.	19 Afternoon				0	0	4	0	Heavy Rain
<p>A small, isolated thunderstorm dumped 3 to 4 inches of rain on the Wedgwood area of northeast Houston. The ground was already soaked from recent rains, and this storm caused deep, sudden flooding in the neighborhood. Cars stalled and were flood damaged on U.S. Hwy 59 between downtown and Houston Intercontinental Airport. The storm only lasted an hour but water was slow to drain through the night.</p>									
Leon Co.	20 Early morning				0	0	?	?	Wind & Heavy Rain
Madison Co.	20 Early morning				0	0	?	?	Wind & Heavy Rain
<p>An early morning thunderstorm downed trees in the Normangee area and along the countyline. Some 4-1/2 inches rain fell from the early morning storm and other storms later in the day setting off flooding of area creeks. Specific damage reports were unavailable.</p>									
Webb Co.	24 0200CST				0	0	?	?	Heavy Rain
<p>Heavy rain storms caused street flooding in Laredo. Some houses were reported flooded on the east and south sides of the city. Storms intensified after moving southeast from Laredo and put flooding over some remote areas of south Webb Co. also.</p>									
Jim Hogg Co.	24 0600CST				0	0	5	?	Heavy Rain
<p>Heavy rains began just after midnight and fell onto ground already dampened by moderate rains 10 days earlier. The most severe rain fell from 4 to 6 am and caused a sudden build up of water at 6 am which flooded highways including TX 16 and Tx 285 out of Hebbronville, and most ranch roads in the east and south parts of the county. Several rainstorms the previous day plus the downpour up to 6 am on the 24th totalled 7 inches at Hebbronville. Flooding of ranches continued for several days afterward.</p>									
Zapata Co.	24 0630CST				0	0	?	?	Heavy Rain
<p>Heavy rains during the night culminated in the heaviest downpours 530 to 730 am. Flooding had set in by 630 am cmt over low areas and creeks. The city of Zapata received 4 inches rain to 7 am with 5 inches elsewhere in the county. Hwy Tx 16 was flooded in several places while many rural roads were impassable throughout the morning. Extent of damages was not reported.</p>									

TEXAS, Southern

Duval Co.	24 0700CST				0	0	6	5	Heavy Rain
<p>Countywide damages were put at over \$900,000 for property and \$200,000 for crops as flood waters inundated a large area of south Duval Co. Several periods of rain on 5/23-5/24 were followed by the greatest deluge in the early morning hours of the 24th. Maximum rainfall was 14 inches for the 36 to 48 hour period to 7 am in the Realitos-Conception area. Flooding set in suddenly during the heaviest of the rain early on the 24th and continued for 5 or 6 days afterward as waters drained very slowly. Some 100 houses were flood damaged in Realitos, Conception, and surrounding rural areas. Also business losses were registered in both towns. Severe soil erosion and road damages were reported with several highways inundated for long spells including Tx 359, FM's 716, 1329, 339. Waters were especially high on Cibolo Creek which submerged some bridges by 8 feet and overflowed into Ramirez School doing much damage. Some 50-100 persons were rescued from stranded houses by use of boats and helicopters. Severe crop losses were noted in the watermelon and sorghum growing areas. Some livestock was reported lost in the Benavides area.</p>									
Brooks Co.	24 0830CST				0	0	6	6	Heavy Rain
<p>Heavy rains and subsequent flooding caused an estimated \$3.5 million loss to property and over \$500,000 losses to crops. Rains up to 10 inches in the Falfurrias area accumulated for the 36 hour period ending early on the 24th, but most of this rain fell from midnight to 8 am on the 24th. Added to the overhead rains which caused immediate flooding around Falfurrias was flooding which slowly drained down creeks from Duval Co. the next several days. Countywide 300 homes were flood damaged, about 200 of these were in Falfurrias. Some 75 percent of Falfurrias eventually was flooded as waters continued to rise from Palo Blanco and La Borcitas Creeks for several days afterward. Also 30 to 40 businesses downtown were flooded, many cars and trucks were ruined, watermelon and sorghum crops were badly damaged as water surged over farm lands. Much road and bridge damage occurred including U.S. 281 and Tx 285.</p>									
Hidalgo Co.	24 0830CST				0	0	5	5	Heavy Rain
<p>Early morning rains totaled 5.65 inches at McCook, 5.10 at LaJoya, 4.03 at Mission, 2.98 at McAllen. In each city and surrounding areas low spots flooded and caused damage to a few buildings and many cars. Crops were affected by standing water that lasted several days. Streets and roads were closed till midday.</p>									
Willacy Co.	24 0830CST				0	0	6	7	Heavy Rain
<p>Unusual flooding affected Willacy Co. and caused much crop damage over the southern part of the county. Rains on 5/14 and later wetted Willacy Co. Then during early morning of 5/24 torrential downpours caused a sudden build up as water across the flatlands and agricultural areas of south and west Willacy Co. Some areas reported 10 inches of rain up to late morning on the 24th. After the initial buildup of water on farm lands, the towns of Lyford and Sebastian suffered from slow, progressive, and persistent flooding. Drainage of the flood waters produced a slow movement of water into basins and troughs of the nearly flat landscape, and this water flowed through Lyford and Sebastian, cresting there on the 28th (some 4 days later), and flooding parts of the towns with 5 feet deep water. Some \$2 million losses in personal property and \$6.3 million crop losses were reported. Dozens of houses in the affected area were badly damaged because the water stood so long in them. Cotton, sorghum, & other crops were total losses because of the prolonged submerison in deep water which covered 50,000 acres around the towns.</p>									
Cameron Co.	24 0900CST				0	0	5	5	Heavy Rain
<p>Already wet ground aided flooding when heavy new rains hit Cameron Co. during early morning of the 24th. Falling mainly 730 to 1030 am cmt, the 3 to 4 inch rain caused a build up of water in low areas from Brownsville to the north side of the county. In Brownsville deep water in street seeped in to low lying houses of the Las Prietas area. Other localized low areas in Brownsville, Harlingen, Adams Gardens, and rural areas were plagued by long periods of standing water after the storm. Other property damage included flooded vehicles. Crop losses were registered as 20-40,000 acres of cotton and grains were inundated.</p>									
DeWitt Co.	24 1530CST				0	0	?	5	Heavy Rain
Victoria Co.	24 1530CST				0	0	?	5	Heavy Rain
Jackson Co.	24 1530CST				0	0	?	5	Heavy Rain
<p>Around 330 pm cmt flooding was reported in progress in low areas and along several creeks in these counties. Afternoon rains registered 5 inches south of Victoria, 3 inches in Victoria, 4.0 at Cuero, 3.9 and Hochheim, 5.5 at Edna. Rice levees were washed out and in some areas corn and other grains were washed down by the waters. Rural houses south of Victoria were flooded near U.S. Hwy 77.</p>									
Val Verde Co.	28 0105CST				0	0	?	0	Hail
<p>Just after 1 am cmt a severe thunderstorm moving east into western Val Verde Co. began dropping 3/4 inch diameter hail stones with a few larger stones. Property damage was minor, mainly to vehicles, from U.S. Hwy 90 near Pumpville east to the Pecos River.</p>									

STORM DATA AND UNUSUAL WEATHER PHENOMENA

LATE REPORTS

CORRECTIONS

PLACE	DATE	TIME - LOCAL STANDARD	LENGTH OF PATH (MILES)	WIDTH OF PATH (YARDS)	NO. OF PERSONS		ESTIMATED DAMAGE		CHARACTER OF STORM
					KILLED	INJURED	PROPERTY	CROPS	

PLACE	DATE	TIME - LOCAL STANDARD	LENGTH OF PATH (MILES)	WIDTH OF PATH (YARDS)	NO. OF PERSONS		ESTIMATED DAMAGE		CHARACTER OF STORM
					KILLED	INJURED	PROPERTY	CROPS	

43 VERMONT

JULY 1982

NONE REPORTED

24 MONTANA

JULY 1982

DELETE:
ENTIRE REPORT

for Montana (page 25).

ADD:
REPORT

listed below:

Prairie, Dawson, Wilboux, and Richland Counties

04 1900MST 0 0 ? ? Hail
3/4 inch hail destroyed dryland crops and broke windows and caused roof and siding damage in Glendive.

Silver Bow, Lewis & Clark Counties

07 1400 to 1500MST 0 0 ? ? Winds
Winds over 55 miles per hour blew the northern cornice from an old building in Butte. The falling bricks destroyed one automobile and damaged another. Windows were broken and small sheds were also destroyed. A 22 ft. cabin cruiser was lifted onto the dock at Canyon Ferry.

Sheridan County

16 1115MST 0 3 ? ? Winds and Hail
Strong winds destroyed a mobile home and injured the three persons inside. Hail destroyed many crops.

Rosebud County

22 1730MST 0 0 ? ? Winds
Winds blew down many trees, overturned a semi-trailer truck and destroyed numerous outbuildings in the southern part of the county. Lightning started eight small forest fires.

Southeast Big Horn, extreme southern Rosebud, and southern Powder River Counties

24 1400 to 2230MST 0 0 ? ? Flash Flood
Severe thunderstorms accompanied by heavy rains, up to 4 to 5 inches in one to two hours, caused flash flooding. The thunderstorms had moved ENE out of the Big Horn mountains. Also, hail and strong winds destroyed crops and outbuildings.

31 NORTH CAROLINA

JUNE 1982

DELETE:
ONE TORNADO

in Zebulon, Wake County (page 31).

ADD:
ONE TORNADO

listed below:

ZEBULON, WAKE COUNTY

13 1510EST Short Narrow 1 0 4 0 Tornado (F1)
A tornado touched down briefly in Zebulon, picked up a car and rolled into wall along ground. Driver was killed.

JULY 1982

DELETE:
ONE WIND & HAIL

at Salemburg, Sampson County (page 28).

ADD:
ONE WIND & HAIL

listed below:

Salemburg, Sampson County

04 1930EST 0 0 0 5 Wind, Hail

A thunderstorm accompanied by high winds and large hail destroyed \$365,000 worth of tobacco in the vicinity of Salemburg.

SEPTEMBER 1982

DELETE:
ONE WATERSPOUT/
TORNADO

at Sherrills Ford, Catawba County (page 16).

ADD:
ONE WATERSPOUT/
TORNADO

listed below:

Sherrills Ford, Catawba County

18 1905EST Short Narrow 0 0 4 0 Waterspout/
Tornado (F1)

A waterspout destroyed six piers, then moved onshore momentarily where it destroyed a boathouse and eight small boats.

STORM DATA AND UNUSUAL WEATHER PHENOMENA

CORRECTIONS

CORRECTIONS

PLACE	DATE	TIME - LOCAL STANDARD	LENGTH OF PATH (MILES)	WIDTH OF PATH (YARDS)	NO. OF PERSONS		ESTIMATED DAMAGE		CHARACTER OF STORM
					KILLED	INJURED	PROPERTY	CROPS	

PLACE	DATE	TIME - LOCAL STANDARD	LENGTH OF PATH (MILES)	WIDTH OF PATH (YARDS)	NO. OF PERSONS		ESTIMATED DAMAGE		CHARACTER OF STORM
					KILLED	INJURED	PROPERTY	CROPS	

41 TEXAS, Northern									
<u>APRIL 1982</u>									
DELETE: ONE TORNADO, HAIL-STORM, WINDSTORM & FLASH FLOODING	in Nacogdoches County (page 31).								
ADD: ONE TORNADO, HAIL-STORM, WINDSTORM & FLASH FLOODING	listed below:								
Nacogdoches County	19	1515 to 1747CST	3	100	0	0	?	?	Tornado (F1) Hailstorms Windstorms Flash Flooding
A series of severe thunderstorms raked Nacogdoches County. One track of severe weather moved northeastward across the County, with 1.25 inch hail reported at Douglass at 1515, 1 inch hail in Appleby at 1604, and 1 inch hail in Garrison at 1625. A tornado apparently touched down 5 miles east of Douglass about 1530, producing significant tree damage. Other wind damage occurred near Cushing between 1500 and 1600. At 1739 CST, 1.25 inch hail fell at Woden in southern Nacogdoches County. Heavy rainfall resulted in a washed out bridge on Highway 21 near Melrose with Highways 7, 21 and 95 closed due to high water.									
DELETE: ONE TORNADO & HAIL-STORM	in Northern Nacogdoches County (page 31).								
ADD: ONE TORNADO & HAIL-STORM	listed below:								
Northern Angelina County	19	1656 to short narrow 1805CST	short narrow		0	0	?	?	Tornado (F1) Hailstorm
Severe thunderstorms moved generally eastward over northern Angelina County, with a brief tornado touchdown resulting in uprooted trees between Pollok and Wells (north of Lufkin). One inch hail was reported along the Cherokee-Angelina County line at 1725 and 6 miles north of Lufkin at 1805 CST.									
DELETE: ONE TORNADO	at 5 NW Linden (page 32).								
ADD: ONE TORNADO	listed below:								
5 NW Linden, Cass County	25	1942 to 1956CST	6	50	0	0	?	?	Tornado (F1)
A small tornado apparently touched down several times along a path from east of Hughes Springs to northwest of Linden. Rural tree damage was reported at several points along the track.									
<u>MAY 1982</u>									
DELETE: ONE WINDSTORM & HAILSTORM	at 10 W Waxahachie and Bristol, Ellis County (page 39).								
ADD: ONE WINDSTORM & HAILSTORM	listed below:								
10 W Waxahachie and Bristol, Ellis County	14	2050CST to 2145CST	2050CST to 2145CST		0	0	?	?	Windstorm Hailstorm
Spotters reported estimated 60 MPH winds with a strong thunderstorm 10 miles west of Waxahachie at 2050. One inch diameter hail fell from a different storm in Bristol at 2145.									
DELETE: 3 HAILSTORMS	at Annona, Red River County (page 39), Cooper, Delta County (page 39), and Southern Lamar County (page 39).								
ADD: 3 HAILSTORMS	listed below:								
Annona, Red River County	14	2230CST	2230CST		0	0	?	?	Hailstorm
Golf ball size hail fell for a brief period at Annona.									
Cooper, Delta County	14	2240CST	2240CST		0	0	?	?	Hailstorm
Golf ball size hail was reported in Cooper by the County Sheriff.									
Southern Lamar	14	2250CST	2250CST		0	0	?	?	Hailstorm
Golf ball size hail was reported southeast of Paris.									

41 TEXAS, Western									
<u>MAY 1982</u>									
DELETE: ONE HAIL	at Skellytown, Carson County (page 43).								
ADD: ONE HAIL	listed below:								
Skellytown, Carson County	19	1655CST	1655CST		0	0	0	0	Hail
Baseball-sized hail at Skellytown caused minor damage.									
DELETE: ONE TORNADO	at White Deer, Carson County (page 43).								
DELETE: ONE TORNADO	at Canadian, Hemphill County (page 44).								
ADD: ONE TORNADO	listed below:								
Canadian, Hemphill County	19	1935CST	?	?	0	0	2	?	Tornado (F1)
Tornado 5 miles south of Canadian. At 1900CST strong wind gusts hit Canadian damaging a trailer.									
47 WISCONSIN									
<u>MAY 1982</u>									
DELETE: ONE TORNADO	at Brookfield, Milwaukee County (page 46).								
ADD: ONE TORNADO	listed below:								
Brookfield, Waukesha County	15	1617CST	2	30	0	0	5	0	Tornado (F1)
A tornado touched down in the Imperial Estates subdivision of Brookfield, causing minor damage to 22 houses and severe damage to 3 houses. The damage occurred in the area of Coral Drive, Echo Lane, Camfield Drive, and Pembroke Drive. The tornado cut an intermittent six-block path just west of Calhoun Road from Coral Drive north to Bedford Drive, then lifted and continued east-northeast as a funnel aloft for about one mile. A final touchdown occurred at the intersection of Hampton and Lisbon Roads.									

REFERENCE NOTES

† Storm damage categories are from 1 to 9 as follows:	*	Miles instead of yards
1 Less than \$50	**	Yards instead of miles
2 \$50 to \$500	0	Includes crop damage
3 \$500 to \$5,000	@	Includes heavy sleet storm
4 \$5,000 to \$50,000	#	Freezing drizzle and freezing rain, commonly known as glaze
5 \$50,000 to \$500,000	≠	Not received or incomplete
6 \$500,000 to \$5 Million		
7 \$5 Million to \$50 Million		
8 \$50 Million to \$500 Million		
9 \$500 Million to \$5 Billion		

"F" SCALE DEFINITIONS

0 = 40-72	MPH	Breaks branches off trees; signboards damaged.
1 = 73-112	MPH	Peels surface off roofs; trailer houses pushed or damaged.
2 = 113-157	MPH	Tears roofs off frame houses and outbuildings; cars blown off highway.
3 = 158-206	MPH	Windows of skyscrapers smashed; frame houses destroyed; cars lifted off ground.
4 = 207-260	MPH	Skyscrapers twisted; frame houses leveled; cars blown some distance.
5 = 261-	MPH	or greater.

USCOMM-NOAA-ASHEVILLE, NC 1982-3000

DEPARTMENT OF COMMERCE
NATIONAL OCEANIC AND ATMOSPHERIC ADMINISTRATION
ENVIRONMENTAL DATA AND INFORMATION SERVICE
NATIONAL CLIMATIC CENTER
FEDERAL BUILDING
ASHEVILLE, N.C. 28901

POSTAGE AND FEES PAID
U.S. DEPARTMENT OF COMMERCE

COM 210
THIRD CLASS
BULK RATE

