

STORM DATA



"I CERTIFY THAT THIS IS AN OFFICIAL PUBLICATION OF
THE NATIONAL OCEANIC AND ATMOSPHERIC ADMINISTRATION
AND IS COMPILED FROM INFORMATION RECEIVED AT THE
NATIONAL CLIMATIC CENTER, ASHEVILLE NORTH CAROLINA"
28801

L. Ray Hoyt

ACTING DIRECTOR
NATIONAL CLIMATIC CENTER

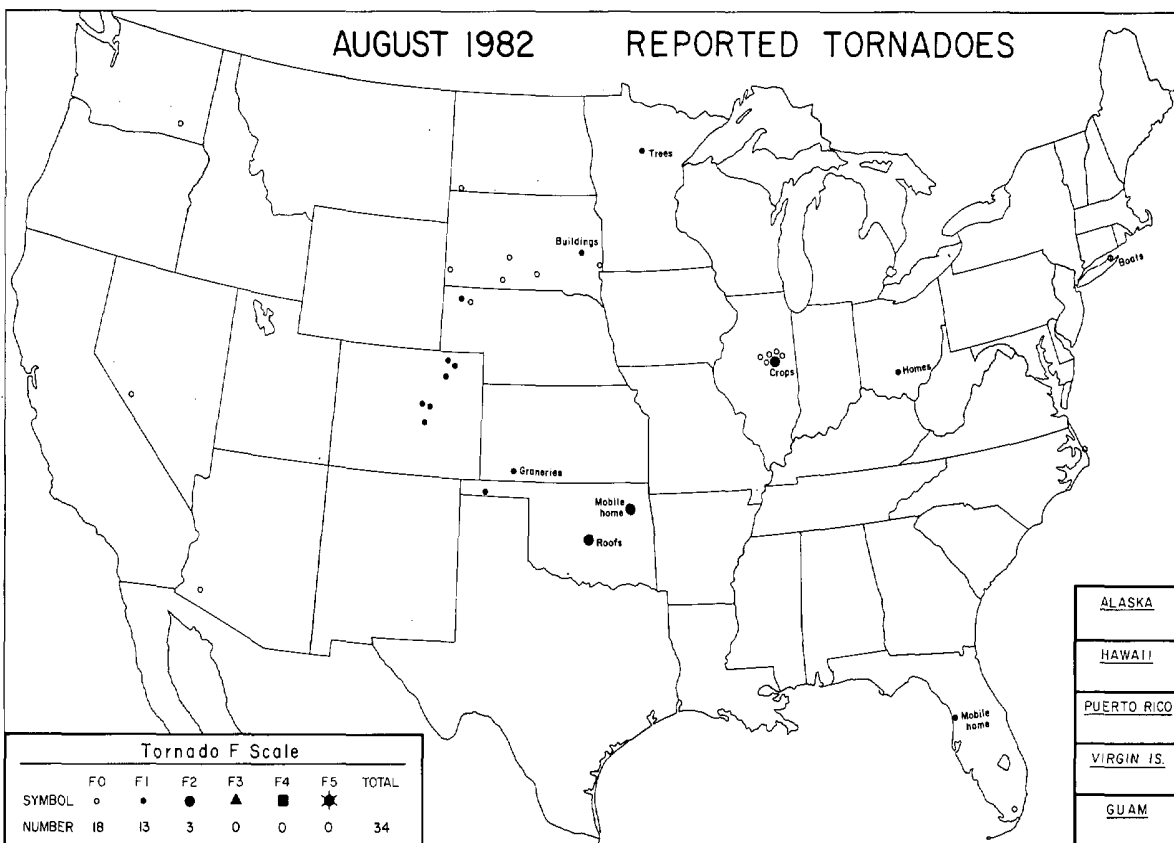
C O N T E N T S

	<u>Page</u>
Outstanding Storms of the Month	3
Storm Data and Unusual Weather Phenomena.	11
Storm Summary	30
Reference Notes	31
"F" Scale Definitions	31

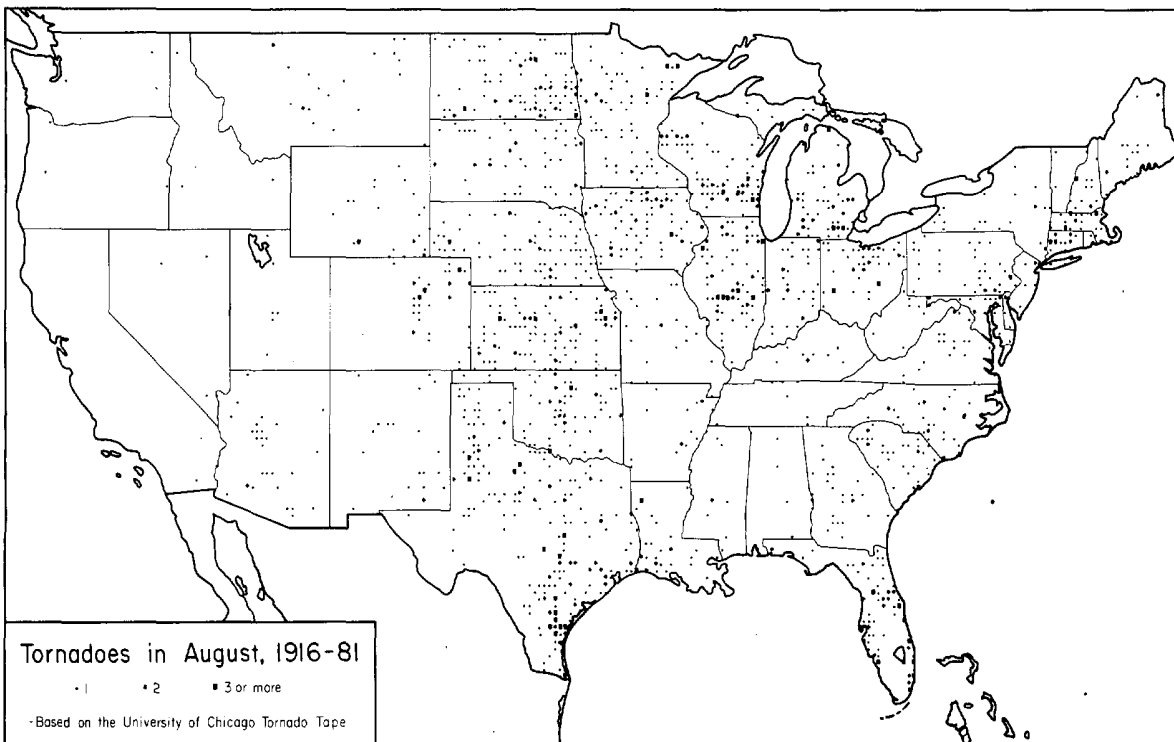
NOTE: The section on Outstanding Storms of the Month is prepared and edited by Professor T. Theodore Fujita, University of Chicago. The narrative descriptions of Storms by State and Summary of Hurricanes and Tropical Storms are prepared by the National Weather Service. The National Climatic Center compiles the statistics on deaths, injuries, and damage. This publication contains our best information on storms but, due to the difficulties inherent in collection of this type of data, it is not all-inclusive. Late Reports and Corrections will be carried quarterly.

STORM DATA - (USPS 363-010) is published monthly. Subscription, pricing, and ordering information is available from: Publications Section (D5413), The National Climatic Center, Environmental Data and Information Service, NOAA, Federal Building, Asheville, NC 28801.

OUTSTANDING STORMS OF THE MONTH



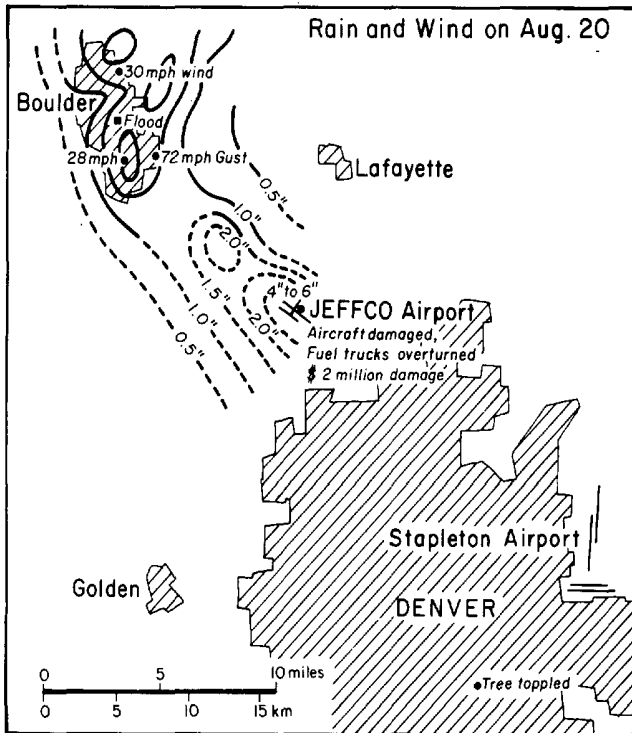
● TYPED REPORT RECEIVED	⊙ PRELIMINARY REPORT RECEIVED	○ NO REPORT RECEIVED	(N) northern (S) southern	(E) eastern (W) western	(C) central (O) coastal
● 1AL	● 5CO	● 10ID	● 15KY	● 20MI	● 25NE
● 2AZ	○ 6CT	● 11IL	● 16LA	● 21MN	● 26NV
● 3AR	● 7DE	● 12IN	○ 17ME	● 22MS	○ 27NH
● 4CA(N)	● 8FL	● 13IA	● 18MD	● 23MO	● 28NJ
● 4CA(S)	● 9GA	● 14KS	○ 19MA	● 24MT	● 29NM
● 30NY(O)	● 33OH	○ 37RI	● 41TX(S)	● 45WA	● 50HI
● 30NY(C)	● 34OK	● 38SC	● 41TX(W)	● 46WV	● 51PR
● 30NY(W)	● 35OR	● 39SD	● 42UT	● 47MI	● 52VI
● 31NC	● 36PA(E)	● 40TN	● 43VT	● 48WY	● 53GU
● 32ND	● 36PA(W)	● 41TX(N)	● 44VA	● 49AK	



1. MICROBURST at JEFFCO AIRPORT, COLORADO on August 20, 1982

A small but intense microburst, which at first was thought to be a tornado, occurred on August 20th at Jefferson County Airport, about 10 miles northwest of Denver, Colorado. Thirteen aircraft were damaged and three fuel trucks were overturned.

The high winds, estimated to be up to 100 mph, were confined to a very small area less than 1000 feet long and 200 feet wide. One T-hanger was totally demolished and a number of panels landed in a fan-shaped pattern to the west and northwest. The total damage was approximately \$2 million.



The outer boundary of the microburst winds which had spread out from the damage area was an elliptic shape, 5,000 feet long and 3,000 feet wide.

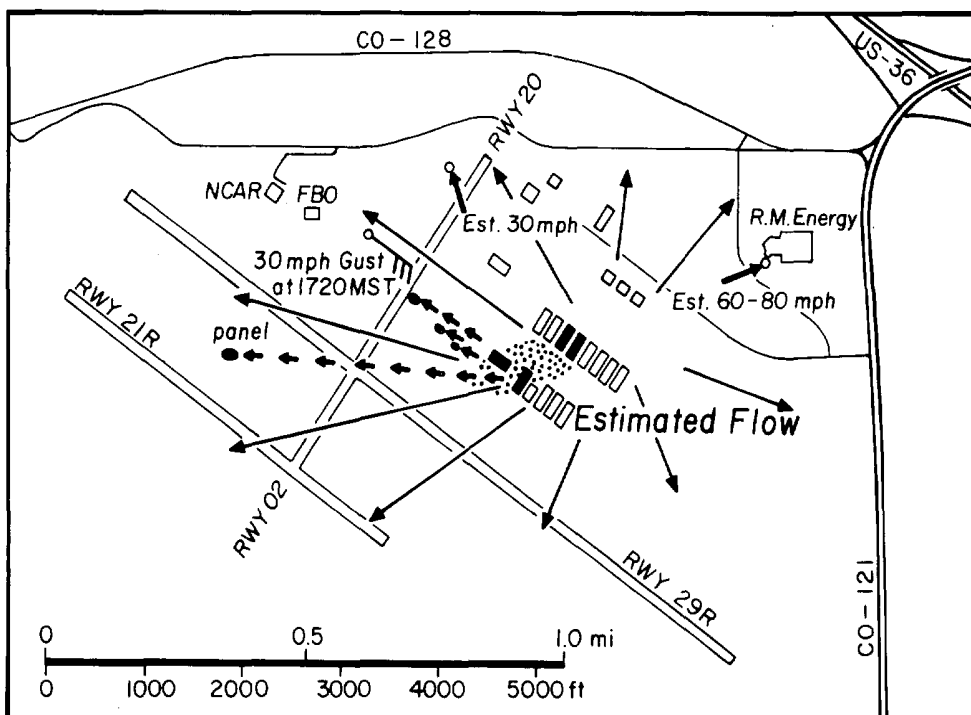
Prior to the storm the wind at the airport was from the west at 15 kts. At 1720 MST, during the microburst, the wind shifted to the east-southeast with a gust up to only 30 kts.

Blinding rain with near zero visibility occurred during the microburst.

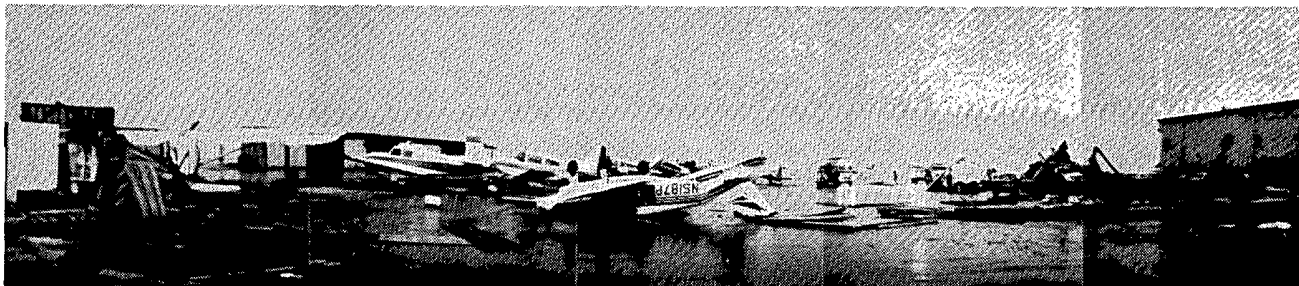
The thunderstorm which produced the microburst also caused flooding in the area. At one spot in Boulder a 72 mph gust was measured. The storm moved southeast passing over JEFFCO, and continued to Denver where a tree in Washington Park was toppled.

---Storm information supplied by Joseph Golden, NOAA, ERL, and Dave Gordon, JEFFCO Airport.

---Survey maps by Fernando Caracena, NOAA, ERL.



MICROBURST at JEFFCO ---- Continued

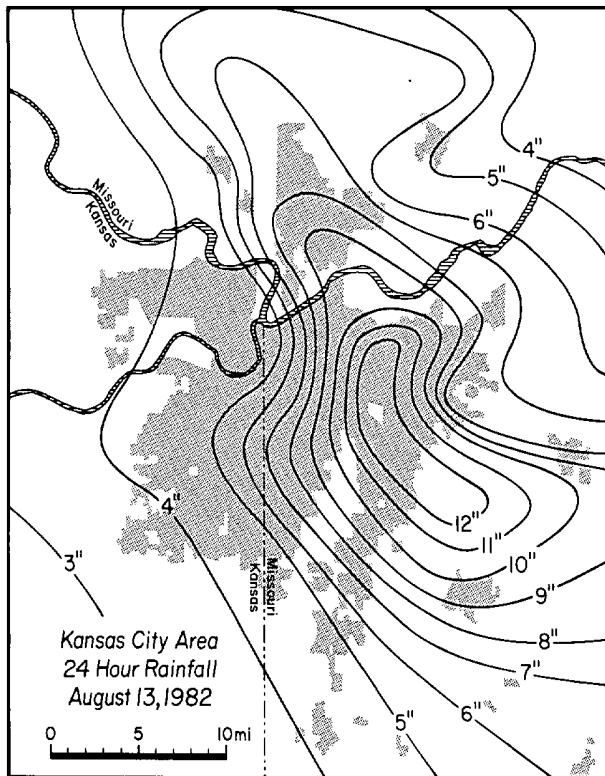


A panoramic view from southeast (left) to west (right) of the damage at JEFFCO. Made from 5 individual pictures, this scene shows large panels of sheet metal which were torn from hangars and scattered by the microburst winds. A plane which was flipped over (shown at center) is enlarged below.



Wreckage of a hanger shown surrounded by emergency equipment shortly after the microburst. ---Photos by David Blanchard, NOAA, ERL.

2. HEAVY RAINS and FLOODING in KANSAS CITY, MISSOURI on August 12-13, 1982



Thunderstorms which dumped heavy rain in the Kansas City area began in the morning of August 12th and continued for a 24 hour period to the following morning. Rainfall amounts were as high as 12.6 inches in the southeast portion of the city. The rains caused flash flooding in the early morning of the 13th and were responsible for 4 deaths.

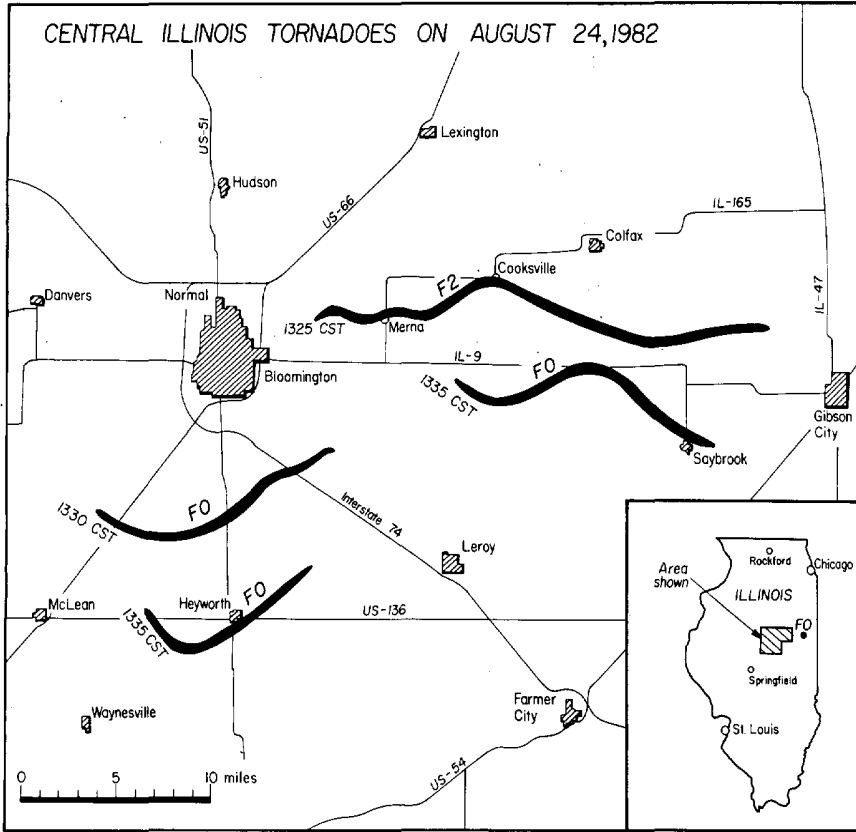
Mapped at left is the 24 hour rainfall ending at 7 am on August 13th. The rainfall pattern is orientated northwest to southeast, parallel to a warm front which existed just southwest of the city. The thunderstorms moved from northwest to southeast along the front. ---Map supplied by The National Severe Storms Forecast Center, Kansas City, Missouri.

3. LIGHTNING at BALTIC, SOUTH DAKOTA on August 3, 1982

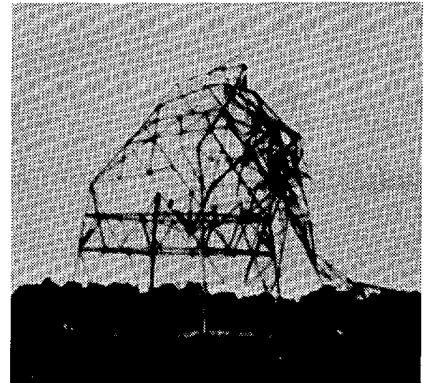
Lightning, having struck the television antenna of a home in Baltic, South Dakota, followed the electrical wiring into an interior wall and arced when it reached an electrical cable. The lightning blew out the wall (shown at right) and destroyed a television set. The homeowner had slept through the incident. ---Photo by Lloyd Cunningham, Sioux Falls Argus Leader. Supplied by NWSFO Sioux Falls, South Dakota.



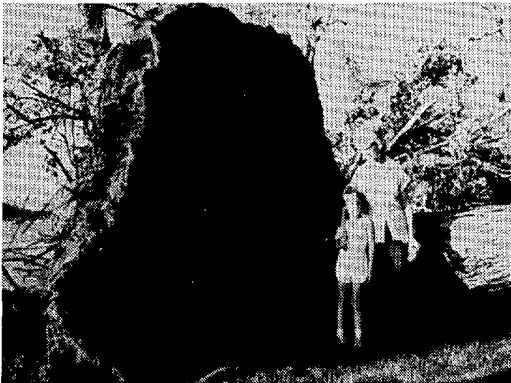
4. TORNADOES in CENTRAL ILLINOIS on August 24, 1982



In the early afternoon of August 24th, 5 tornadoes occurred in central Illinois near Bloomington. Of the 5, one was F2 and the others were all F0. Of note is that four of the tornadoes, had unusual changes in the direction of their paths.



A partially collapsed, high-tension transmission tower.



A large uprooted tree.



A grain bin with its top twisted off.



A farmstead through which one of the tornadoes passed from lower left to upper right. It apparently moved between the two large trees. ---Map and photos by Al Thomas, McLean County E.S.D.A.

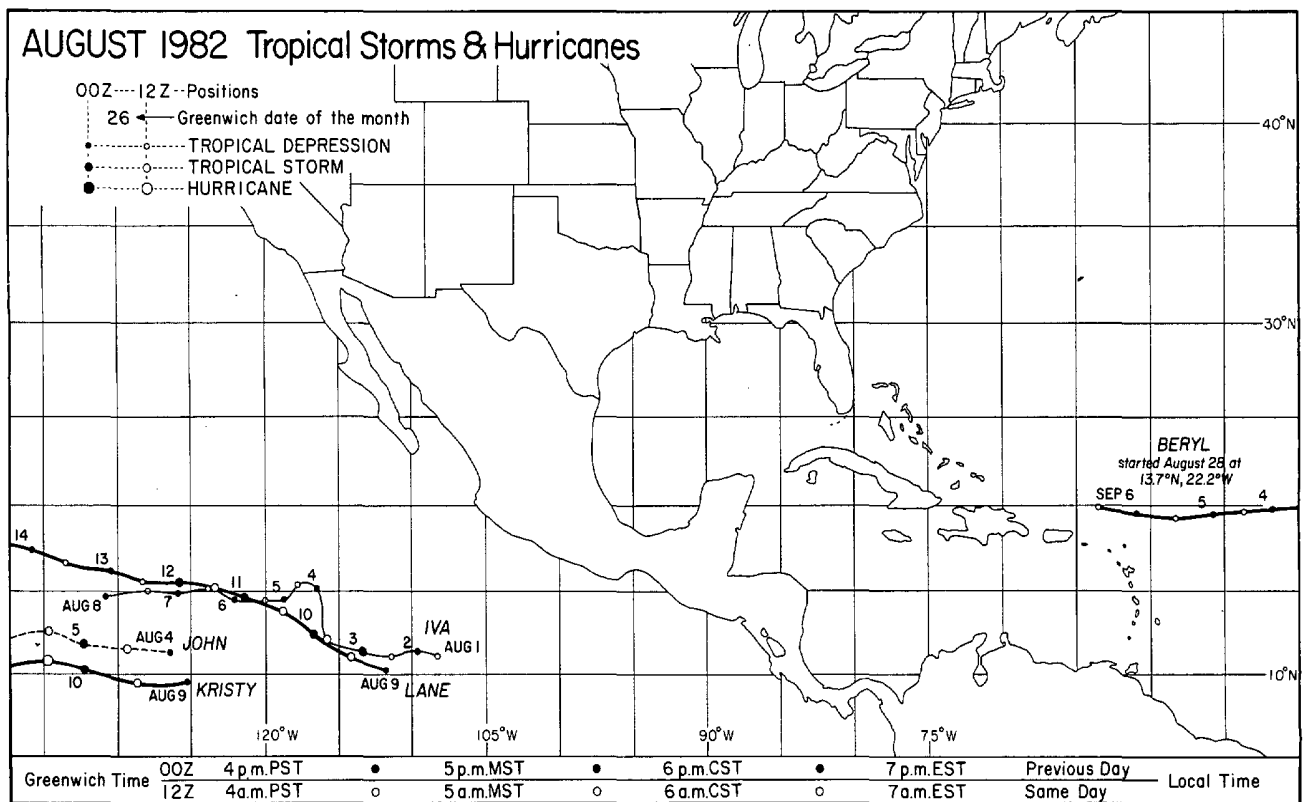
5. HAIL in and near EDMONT, SOUTH DAKOTA on August 23, 1982

At 1938 CST on August 23rd, 2 3/4 inch hail fell in Edgemont, South Dakota causing extensive damage to property. About a half hour later at 2007 CST, hail up to 2 inches in diameter again fell in the city causing yet more damage. Some of the hail which fell in and around Edgemont was described as baseball size.

Right: Partially melted hail stones which pelted Edgemont. ---Photo by Rod Worrell, The Edgemont Herald Tribune. Supplied by NWSFO Sioux Falls, South Dakota.

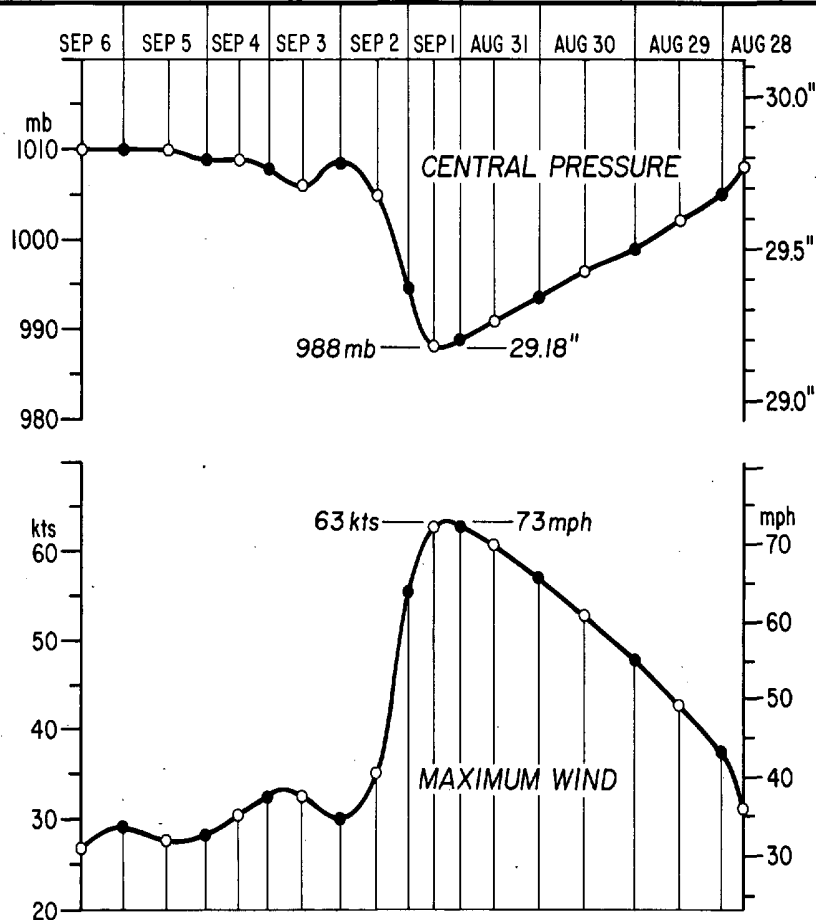
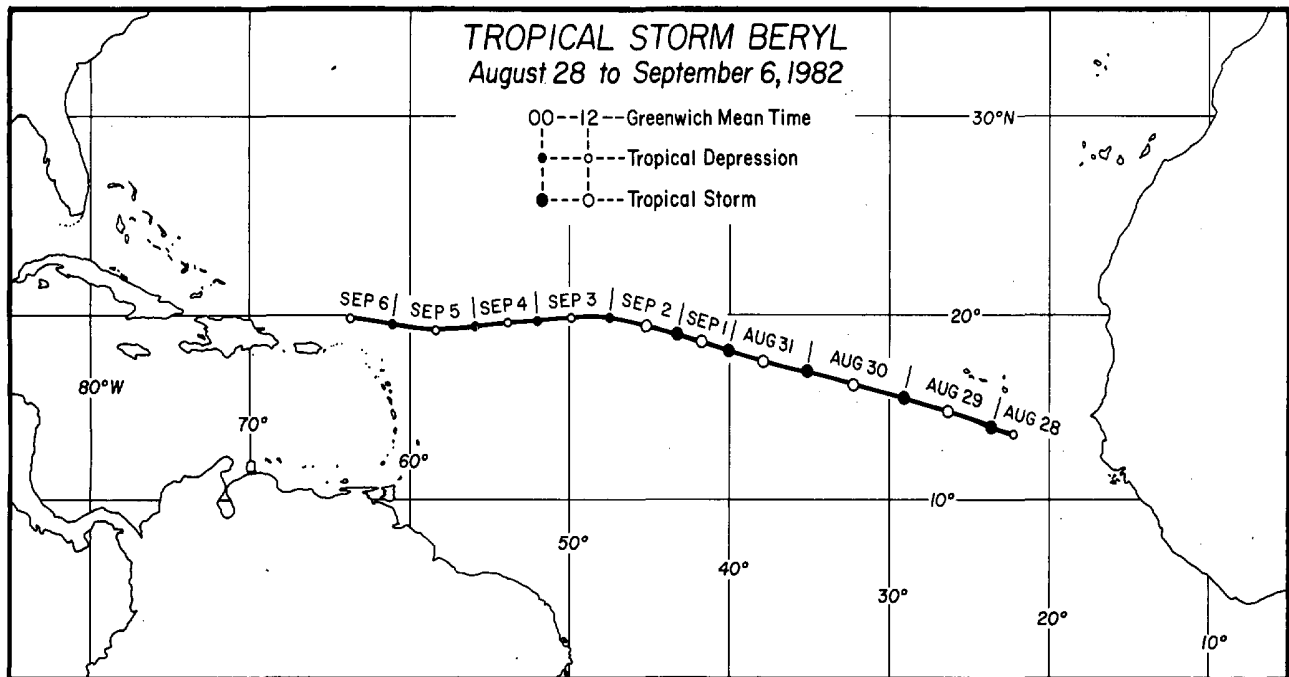


TROPICAL STORMS & HURRICANES



6. TROPICAL STORM BERYL from August 28 to September 6, 1982

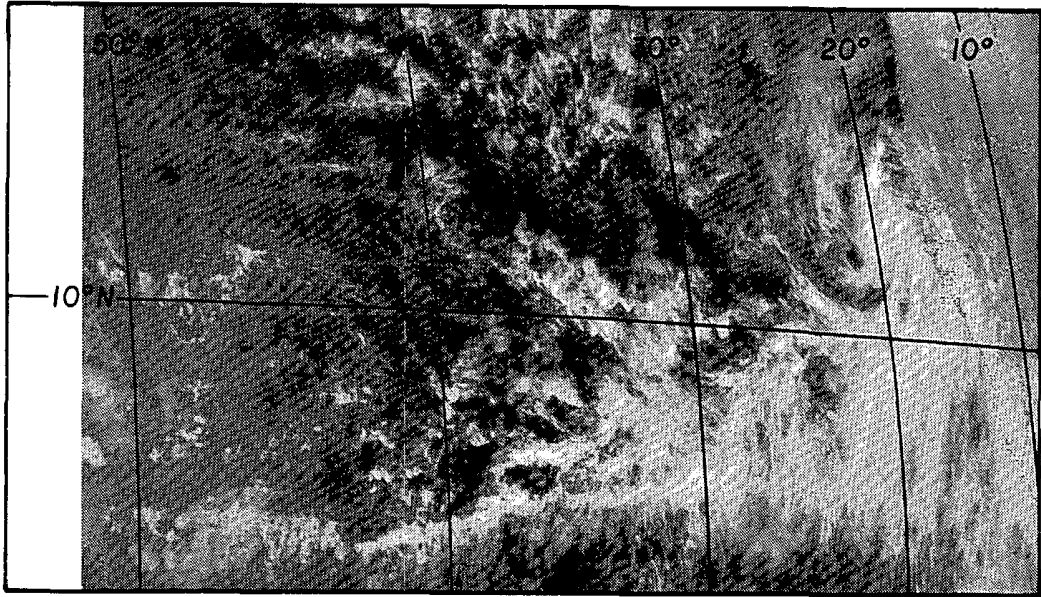
Tropical Storm Beryl formed off the coast of Africa on August 28th and moved across the Atlantic Ocean before finally dissipating northeast of Puerto Rico on September 6th. Upon intensifying to just short of hurricane strength, Beryl underwent a sudden and rapid deintensification on September 1st and never substantially regained strength.



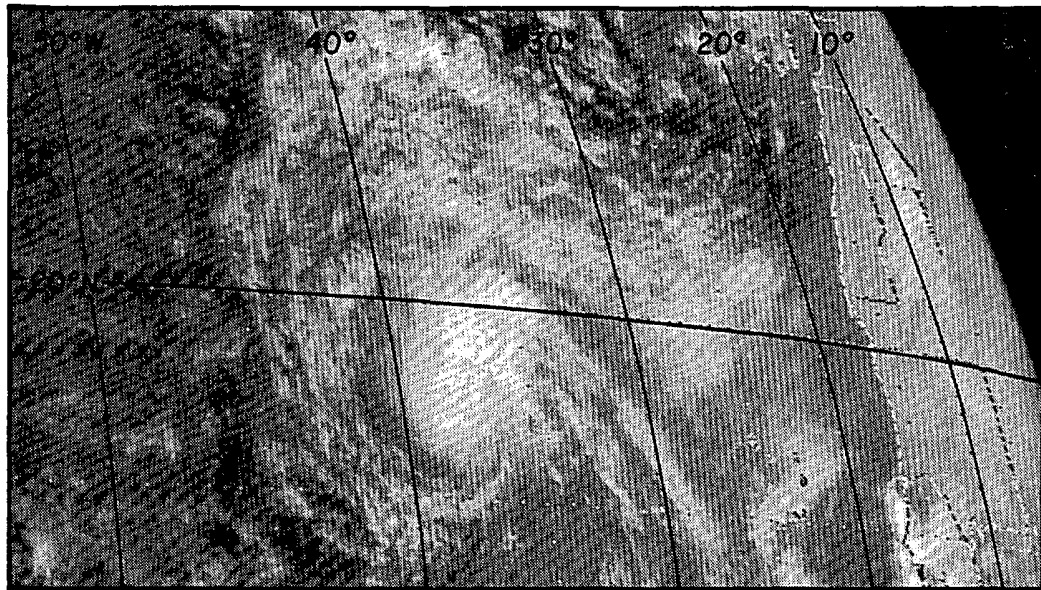
On the next page, visible satellite pictures depict the westward progression and various stages of Beryl: forming off the coast of Africa at 1330 GMT, August 27th, as an intensifying tropical storm at 1100 GMT, August 31st, and rapidly weakening at 1300 GMT on September 2nd, shortly after peak intensity. ---Map, graphs and photos supplied by the National Hurricane Research Laboratory and the National Hurricane Center, Coral Gables, Florida.

TROPICAL STORM BERYL ---- Continued

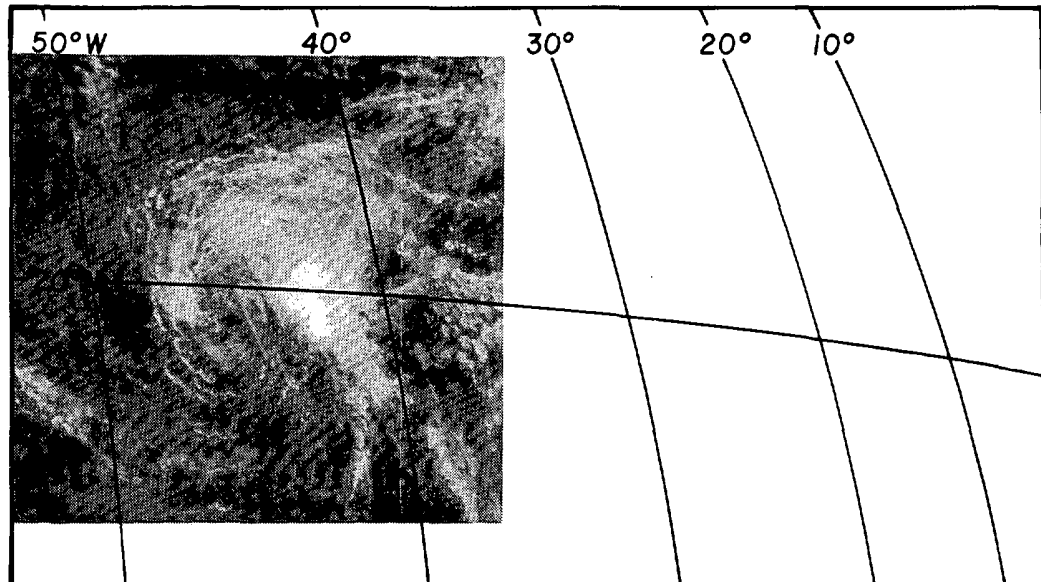
1330 GMT, August 27



1100 GMT, August 31



1300 GMT, September 2



STORM DATA AND UNUSUAL WEATHER PHENOMENA

AUGUST 1982

PLACE	DATE	TIME - LOCAL STANDARD	LENGTH OF PATH (MILES)	WIDTH OF PATH (YARDS)	NO. OF PERSONS				ESTIMATED ¹ DAMAGE	CHARACTER OF STORM
					KILLED	INJURED	PROPERTY	CROPS		
1 ALABAMA										
Saraland, Mobile County	01	1330CST								Funnel cloud
		Saraland police reported a funnel cloud northeast of Saraland moving east.								
Mobile area, Mobile County	11	1108CST								Funnel cloud
		Mobile police reported a funnel cloud 1 mile west of the mouth of Mobile River moving east.								
Clanton, Chilton County	18	1415CST								Funnel cloud
		A funnel cloud was reported to have dipped to within 100 ft. of the ground over the western edge of Clanton.								
Selma area, Dallas County	18	1515CST			0	0	4	0		Wind
		Thunderstorm winds, accompanied by hail and heavy rain, downed at least 30 trees in Selma. Two automobiles were damaged when struck by aluminum siding that was tipped off a nearby building. Some plate glass windows were also broken by the wind and hail. The storm also caused extensive power outages.								
Selma area, Dallas County	31	1715CST			0	0	3	0		Wind
		Thunderstorm winds snapped the tops out of trees and downed some others in the west Selma area. One chain link fence was twisted into a knot.								
2 ARIZONA										
Greater Phoenix Area Maricopa County	1	1700-1800MST			0	0	5	4		Wind
		A thunderstorm with winds gusting to 60 MPH hit the eastern part of the valley and downed power lines, trees, fences, signs and power poles. There was damage to roofs and mobile homes.								
Colorado City Mohave County	2	1355MST			0	0	4	4		Hail
		A severe thunderstorm with 1 inch diameter hail pelted this small community on the Utah border.								
Tucson, Pima County	2	1430MST			0	0	5	0		Flash Flooding
		A thunderstorm dropped nearly 2 inches of rain in 90 minutes in parts of the city, flooding many streets and roads from 1 to 5 feet deep. Two young girls were rescued as they were being swept down an arroyo. There was road, street damage and water damage to cars.								
Colorado City Mohave County	2	Late Night			0	0	6	4		Flash Flooding
		A severe thunderstorm dumped 3.2 inches of rain in two hours. Water from the sandstone cliffs above the city rushed to join the flash flood already pouring through the town and washed out three bridges on Short Creek. It destroyed the main sewer line, dumping raw sewage into the flooding waterway. A 10-inch irrigation water line and two large telephone cables were lost. A major water line also broke, completely draining the community's 600,000 gallon steel tank.								
Three Points Pima County	8	Afternoon			0	0	0	0		Funnel Clouds
		Four small funnel clouds of short duration, two to three miles east of here were observed by the public. Movement was to the west.								
Ajo Pima County	10	1750MST			0	3	6	0		Wind, Hail, Flash Flooding
		A very severe thunderstorm with 70 MPH winds, 2.5 inches of rain and hail that accumulated to a depth of one-half inch, damaged 200 homes and businesses, 73 severely. No major injuries were noted. Total damage was put at \$1,000,000.								
Lake Havasu City Mohave County	12	0400MST			0	0	6	0		Flash Flooding
		A severe thunderstorm with 2 to 3 inches of rain caused extensive damage to streets and roads in the area. Rocks and mud covered 250 miles. Pavements were ripped up and undermined. A number of cars and trucks were carried off the roads by rushing waters. Several motorists had to be rescued. No major injuries were noted.								
Parker-Rouse Area Yuma County	12	0400-1000MST			0	0	6	4		Flash Flooding
		Very heavy rains of 2 to 3 inches swamped the area causing street and building flooding. Parker was isolated a good part of the day with water 2 to 3 feet deep over many streets and roads. The Rouse Wash ran over its banks causing extensive damage to homes and property in the small town of Rouse. The flood undermined several thousand feet of Santa Fe railroad track. Two bridges were badly damaged and rails twisted.								
— ARIZONA										
Gila Bend Maricopa County	12	1514MST	1/2	30	0	0	0	0		Tornado (FO)
		A tornado was observed by a Gila Bend Air Force Base observer to be 3 to 5 miles northwest of the base. It picked up some debris before returning to the clouds.								
Tucson Pima County	13	0300-0600MST			0	0	5	0		Flash Flooding
		A very heavy thunderstorm dumped up to 2-1/2 inches of rain over the city, damaging many city and county roads and streets and reducing rush-hour traffic to a crawl. A man floated down a flooded arroyo in his car. Forty main intersections in the city were flooded 1 to 4 feet deep. At one intersection, where flood waters washed away the pavement, a hole 8 feet deep was scoured out.								
Safford Area	16	Evening			0	0	5	5		Hail, Wind, Flash Flooding
		A violent thunderstorm with winds 60 to 70 MPH and hail the size of ping pong balls denuded and destroyed over 600 acres of prime cotton on the north side of the Gila River. There was extensive flood and wind damage to homes and farm buildings.								
Rock Point-Chinle Apache County	20	0500MST			0	0	5	4		Flash Flooding, Wind
		Heavy rain on top of already saturated ground caused extensive flood damage to homes and roads. More than fifteen Navajo families, mostly from Rock Point, were made homeless, losing most of their possessions. Several residents watched their cars being picked up by the surging waters and carried away. Water damage to the Navajo Trival Library at Window Rock was put at \$10,000.								
Tucson Pima County	23	1500-1600MST			0	2	6	0		Wind, Hail, Flash Flooding
		A fierce thunderstorm with up to 4 inches of rain, marble size hail and wind to 50 - 60 MPH, caused considerable street flooding and extensive property damage. About 40 mobile homes were damaged, a dozen seriously and several totally destroyed in a west side trailer park. There was widespread damage to roofs, power lines, signs and trees.								
Greater Phoenix Area Maricopa County	23	1800-2000MST			0	0	6	4		Flash Flooding, Wind
		A severe thunderstorm with winds up to 60 MPH and rain 1/2 to over 3 inches moved across the valley from southeast to northwest. There was extensive flood and wind damage. The weight of the water caused the roof of a large supermarket to collapse. About \$100,000 water damage occurred to a hospital under construction. Several minor fires were lightning caused. Many streets were under water up to several feet deep.								
Greater Phoenix Area Maricopa County	24	2200-2400MST			0	0	5	0		Flash Flooding, Wind
		This was the second consecutive night of severe thunderstorm activity with wind gusts to 55 MPH and 1/2 to 2 inches of rain. There was considerable street flooding and wind damage to houses and mobile homes.								
Winslow Navajo County	25	1215MST			0	0	4	0		Hail
		A severe thunderstorm with over an inch of rain and 1 inch diameter hail pelted the city, but with only minor damage.								
Bisbee Cochise County	27	1710MST			1	0	4	0		Flash Flooding
		After a torrential rain storm of 2-1/2 inches in 2 hours, streets were flooded and a four-foot wall of water came roaring down Brewery Gulch. A man trying to remove his car from a flooded street was carried downstream and into an underground culvert. The body was recovered four miles downstream.								

STORM DATA AND UNUSUAL WEATHER PHENOMENA

AUGUST 1982

PLACE	DATE	TIME - LOCAL STANDARD	LENGTH OF PATH (MILES)	WIDTH OF PATH (YARDS)	NO. OF PERSONS		ESTIMATED DAMAGE		CHARACTER OF STORM
					KILLED	INJURED	PROPERTY	CROPS	
3 ARKANSAS									
Saline County	11	1230CST	-	-	0	0	3	0	Lightning
Two small fires were started by lightning at 2 residences in Benton.									
Faulkner County	13	about 1830CST	-	-	0	0	5	-	Severe thunder-storm
The roof was blown off a warehouse by strong thunder-storm wind in Conway. Several other buildings were damaged. Two or three homes were struck by lightning without starting fires. The Conway Police Department was without its radio communications due to lightning.									
Pulaski County	13	1930-2230CST	-	-	0	0	5	-	Severe thunder-storm
A severe thunderstorm moved through the county causing trees to be uprooted and knocking down power lines. Some urban flooding was reported in Jacksonville. Also, lightning started two house fires in Little Rock causing considerable damage to one of the residences. Another house fire was started by lightning in North Little Rock, also doing considerable damage.									
Phillips County	14	130CST	-	-	0	0	4	-	Severe thunder-storm
A strong thunderstorm moved through West Helena and Helena early in the day causing urban flooding, uprooting some trees and knocking down power lines.									
Craighead County	15	0955CST	-	-	0	0	3	-	Lightning
One residence and one business received damage from fires started by lightning.									
Cleveland County	15	about 1330CST	-	-	0	0	?	-	Flooding
Urban flooding in the eastern sections of Rison resulted when heavy rain made the Dansby Creek go over its banks.									
Jefferson County	16	1930-2230CST	-	-	0	0	5	-	Severe thunder-storm
A strong thunderstorm with 3.76 inches of rain flooded many businesses in Pine Bluff. About 12,000 customers had electrical service interrupted after 8 transformers were knocked out by lightning. One residence caught on fire after being struck by lightning.									
Grant County	16	about 2200CST	-	-	0	0	6	-	Lightning
The largest church in Sheridan was burnt to the ground after being struck by lightning.									
Greene County	23	about 1830CST	-	-	0	0	5	-	Severe thunder-storm
A strong thunderstorm dumped up to 5 3/4 inches of rain along with golfball size hail in Paragould. Urban flooding was reported from the northern and eastern sections of Paragould. Also, wind caused damage at the Paragould Municipal Airport when it tossed a small aircraft into a truck parked nearby.									
Benton County	24	about 1935CST	-	-	0	0	?	-	Severe thunder-storm
A strong thunderstorm moved south through the county from Missouri. Path of the storm was from Gravette to Brush Creek. Wind damage was reported from Pea Ridge, Bella Vista, Bentonville, and Rogers. Damage consisted of fallen tree limbs and downed power lines.									
Benton County	27	1815CST	-	-	0	0	4	0	Lightning
Lightning caused considerable damage to a Bentonville residence by starting a house fire.									
4 CALIFORNIA, Northern									
Montague (Siskiyou County)	29	1600 pst	-	-	0	0	0	3	Hail
Hail fell in and around the town of Montague for about 20 min. Hail size ranged from 1/4 to 1/2 inch and covered the ground in many areas. Some minor damage to wheat to the east of town.									
4 CALIFORNIA, Southern									
San Bernardino County	12	1400PST	-	-	0	0	0	0	Heavy Rains
Heavy rains resulted in flooding on many County roads in the Barstow, Ca. area.									
San Bernardino County	24	Afternoon	-	-	0	0	0	0	Heavy Rains
Needles, Ca. reported 1.10 inches of rain in 24 hour period. Golden, Ca. reported 3.05 inches of rain in 20 hours.									
San Diego County	24	Mid-day	-	-	0	0	unk	0	Heavy Rains
Several roads were washed out in the Anza Borrego Park area, due to heavy rains and local flooding.									
5 COLORADO									
Elbert Cy.	4	1610MST	1	50	0	0	0	0	Tornado (F1)
A tornado was spotted by a pilot about 30 miles southeast of Kiowa.									
Colorado Springs	4	afternoon	-	-	0	0	5	0	Heavy rain
Torrential rains drenched Colorado Springs, causing about \$400,000 damage to public property and drainage systems in the northeast part of the city. Several drains were washed out, and one home suffered severe water damage.									
Aurora	4	afternoon	-	-	0	0	4	0	Heavy rain
Heavy rain poured through the roof a clothing store, causing widespread water damage. The roof was being repaired when the storm hit.									
Jefferson Cy.	5	1830MST	-	-	0	0	3	0	Thunderstorms
2.38 inches of rain fell in an hour in Arvada, with local minor flooding on Ralston Creek. 1 1/2 inches fell in Westminster, with damage to streets and culverts. Lightning caused some minor power outages.									
Clear Creek Cy.	6	1530MST	-	-	0	1	0	0	Lightning
A man was seriously injured on Mount Evans when he was struck by lightning.									
Denver	6	1630-1730MST	-	-	0	0	4	0	Heavy rain, hail
3/4 inch hail was reported at 440 pm mst in north Denver. Street flooding occurred in the downtown area; 4 to 5 feet of water inundated Interstate 25 in the area, closing the freeway for a while. Rainfall in the metro area ranged up to 2.35 inches in just over an hour, and an estimated 2000 basements were flooded.									
Morgan Cy.	9	1530MST	2	75	0	0	0	0	Tornado (F1)
A tornado touched down between Wiggins and Hoyt.									
Morgan Cy.	9	1530-1550MST	-	-	0	0	3	4	Hail
Golf ball size hail fell 11 miles north of Wiggins, with stones up to 1 inch in diameter near Hoyt. Corn was damaged in the area. In the eastern part of the county, a house in Hillrose was damaged by hail.									
Larimer Cy.	9	1600MST	-	-	0	0	0	0	Hail
3/4 inch hail fell 6 miles east of Fort Collins, with marble size stones in many other spots nearby.									
El Paso Cy.	9	1630MST	-	-	1	0	0	0	Lightning
A golfer was killed by lightning at Fort Carson.									
Weld Cy.	9	1900-2000MST	-	-	0	0	0	4	Hail
Up to golfball size hail fell in a swath 9 miles long and 2 miles wide from Keota to near Stoneham. Some wheat was damaged.									
Weld Cy.	9	1905MST	1	50	0	0	0	0	Tornado (F1)
A tornado was sighted by a pilot just north of Stoneham, moving to the southeast at 15 to 20 mph.									
El Paso Cy.	10	1215MST	1	60	0	0	0	0	Tornado (F1)
A tornado touched down 5 miles southeast of Palmer Lake, moving toward the east at about 15 mph. The funnel was photographed.									
Douglas Cy.	10	1223-1233	1 1/2	50	0	0	0	0	Tornado (F1)
A tornado was spotted 10 miles southeast of Castle Rock, and remained on the ground for about 10 minutes.									
Eastern Colorado	10	aftn, eve.	-	-	0	0	3	3	Thunderstorms
Severe weather occurred in several areas. Hail damaged alfalfa and corn near Elizabeth, and winds gusted to about 60 mph near Castle Rock at the time of the Douglas County tornado described above. 2 1/4 inches of rain fell near Pueblo in the evening. Lightning in Colorado Springs caused power outages, and minor damage to homes.									
Logan Cy.	13	1750MST	1 1/2	70	0	0	3	0	Tornado (F1)
A tornado touched down briefly 13 miles southwest of Sterling, downing a few trees and power lines.									

STORM DATA AND UNUSUAL WEATHER PHENOMENA

AUGUST 1982

PLACE	DATE	TIME - LOCAL STANDARD	LENGTH OF PATH (MILES)	WIDTH OF PATH (YARDS)	NO. OF PERSONS		ESTIMATED DAMAGE		CHARACTER OF STORM
					KILLED	INJURED	PROPERTY	CROPS	
— COLORADO —									
Sterling	13	1800MST			0	3	4	?	Thunderstorm
A heavy thunderstorm dumped 2 to 4 inches of rain in the Sterling area. An irrigation ditch broke, causing a road to wash out; lightning ignited a haystack; and rain and wind disrupted a fair. Three persons at the fairgrounds sustained injuries from flying debris.									
Eastern Foothills	15	1200-1600MST			0	0	3	0	Thunderstorms
Heavy rains hit the eastern foothills in many places. Lightning caused brief power outages in Colorado Springs; US highway 160 near La Veta Pass was closed for a time due to flooding and mudslides. Hail piled up 2 to 4 inches deep east of Cripple Creek in Teller county; and heavy rain and winds estimated as high as 70 mph occurred in the Conifer-Evergreen area around 320 pm mst.									
Aurora	16	1725MST			0	0	0	0	Heavy rain, wind
A gust of 61 mph was recorded at Buckley Field; at the same time almost an inch of rain fell in southern Aurora, causing some street closures due to flooding.									
North Denver area	16	2040MST			0	1	3	0	rain, lightning
A woman was hit by lightning just north of Denver, and a house in the area was also struck. To the north in Longmont, an inch of rain fell, causing local flooding.									
Northeastern Co.	17	aftr, eve.			0	1	0	4	Thunderstorms
Heavy thunderstorms dumped over an inch of rain and 1½ inches of hail at Kersey in Weld County, damaging beans, corn, and onions, and causing local flooding. In the evening, a man was slightly injured by a lightning strike at Red Feather Lakes in Larimer County. Rainfall was copious in some spots; 4½ inches fell in an hour and 15 minutes between Evergreen and Conifer. Nearby, 2.66 inches drenched the North Turkey Creek area in just 15 minutes.									
Pueblo area	19	1600-1700MST			0	0	4	4	Thunderstorm
A strong thunderstorm damaged a home and several sheds, as well as corn and other crops. Local flooding and power outages also plagued the northern and eastern parts of Pueblo.									
Jefferson Cy.	20	1750MST			0	0	6	0	High winds
Strong winds from a thunderstorm blasted the Jefferson county airport, causing an estimated 3 million dollars in damage. At least 5 hangars and 15 planes were damaged, many seriously; one hangar was completely destroyed. At first, it was thought that a tornado may have hit the airport, but a later study concluded that a microburst produced by a heavy thunderstorm had occurred; torrential rains fell with the winds.									
Eastern Colorado	20	evening			0	0	4	?	Thunderstorms
Thunderstorms were widespread across eastern Colorado. At 4:10pm MST, 1½ inch diameter hail fell at Ault in Weld County; shortly thereafter, heavy rain buffeted the Fort Collins and Boulder areas; 1.65 inches fell in just 15 minutes in Boulder, with street flooding. Farther south, ½ inch of rain fell in just 5 minutes at Littleton; two homes there were struck by lightning, and another house was hit in Arvada. Over an inch of rain in that city sent Ralston Creek over its banks. Strong winds accompanied the rain; Southeast Boulder had a gust to 72 mph at 5 PM MST. Further south, lightning caused \$25,000 damage to a house in Colorado Springs, which was drenched with 2.31 inches of rain. 1.75 inches fell on the Pueblo area, with some street flooding. By the morning of the 21st, the Arkansas River was over its banks at Boone, just east of Pueblo.									
Ouray	20-23				0	0	5	3	Heavy rain
Frequent heavy rains in and around Ouray sent mud and water cascading into the town, along with many rocks. The chronic flooding washed out 18 bridges, and about 50 buildings were damaged. Some cars were also caught in the slides. Some nearby pastureland was also damaged. The total loss in the area was at least \$250,000.									
Boulder Cy.	22	1250MST			0	0	0	0	Hail
Hail piled up 2 inches deep 4 miles northeast of Ward. Some stones were as large as 1 inch in diameter.									
Montezuma Cy.	23	afternoon			0	0	3	0	Heavy rain
1 to 1½ inches of rain fell in Cortez, washing out a culvert and some earthworks near a road.									
Greeley	23	1830-1930MST			0	0	4	0	Severe tsrms.
Thunderstorms dumped up to 1 inch of rain in half an hour over some sections of Greeley, along with winds estimated at up to 60 to 80 mph. Vivid lightning accompanied the storms, knocking out power to a third of the city at various times and causing minor damage to a few homes.									
6 CONNECTICUT ————— NO REPORT RECEIVED									
7 DELAWARE									
Port Mahon, Kent County	17	abt 1830EST			0	0	6	0	Lightning
A fuel storage tank burned out of control for awhile, after being ignited by a bolt of lightning. The 3.3 million gallons of jet fuel were not entirely burned, but what was left was contaminated. Some reprocessing was said to be possible.									
8 FLORIDA									
Pensacola Beach, Escambia County	02	1630CST	-	-	1	0	0	0	Lightning
A 40-year old man was struck and killed by lightning while standing on a fishing pier at Fort Pickens National Park at Pensacola Beach, Florida.									
Anna Maria Island, Manatee County	03	0945EST	-	-	-	-	-	-	Waterspout
A waterspout was sighted by police offshore (west of) Anna Maria Island west of Bradenton, Florida. The waterspout which was moving toward the island dissipated before making landfall.									
Miami, Dade County	05	0715EST	-	-	-	-	-	-	Waterspouts
Three (3) waterspouts were sighted by Dade County Marine Patrol over the south end of Biscayne Bay, southeast of Miami, Florida. None of the waterspouts affected land.									
Marathon, Monroe County	05	1340EST	-	-	-	-	-	-	Waterspout
A waterspout was observed about 3 miles east of Marathon in the middle Florida Keys. It remained over water.									
Fort Walton Beach, Okaloosa County	06	0200CST	-	-	-	-	4	-	Wind
Strong winds, no estimate given, seriously damaged a fishing pier at Okaloosa Island near Fort Walton Beach, Florida. The strong easterly wind lifted up and blew into the Gulf of Mexico 50 250 pound concrete deck slabs measuring 6 feet by 2 feet by 2 inches thick. The pier was designed so that the deck would break loose if strong waves affected it in order to save the frame of the pier. Cost to repair was estimated at \$35,000.									
Brooksville, Hernando County	10	1615EST	0.5	10.0	0	1	4	0	Tornado (F1)
A tornado touched down about 4 miles south of Brooksville, Florida demolishing one mobile home. One of the two occupants received minor injuries. Damage was estimated to be \$32,000.									
Boca Raton, Palm Beach County	11	0720EST	-	-	-	-	-	-	Waterspout
A waterspout was observed just off the Boca Raton Beach. It dissipated over open water.									
Palm Beach, Palm Beach County	11	1120EST	-	-	-	-	-	-	Funnel Cloud
A funnel cloud was observed just offshore of Palm Beach, Florida.									
Key West, Monroe County	11	1526EST	-	-	-	-	-	-	Waterspout
A waterspout was observed 5 miles west of Key West, Florida moving to the northwest.									
Key West, Monroe, County	11	1755EST	-	-	-	-	-	-	Funnel Cloud
A funnel cloud was sighted 3 miles north of Key West, Florida moving toward the west northwest.									
Boca Raton, Palm Beach County	11	2126EST	-	-	-	-	-	-	Waterspouts
Two waterspouts were sighted just offshore Boca Raton, Florida moving slowly north. No landfall.									
Miami, Dade County	12	1130EST	-	-	0	2	0	0	Lightning
Two teenagers walking across a field near Miami International Airport were struck by lightning. One was critically injured probably having permanent brain damage.									
Homestead, Dade County	12	1255EST	0.3	10.0	0	0	2	0	Tornado (F0)
A tornado briefly touched down about 4½ miles northwest of Homestead, Florida causing tree damage and breaking power and telephone poles. A definite roaring sound was heard and a swirling of debris was observed. No structural damage reported. Tree damage was \$400 to \$500.									
Miami Shores, Dade County	15	1015EST	-	-	-	-	-	-	Funnel Cloud
A funnel cloud was observed near Miami Shores, Florida.									
Shell Point, Wakulla County	17	1310EST	-	-	-	-	-	-	Waterspout
A waterspout was sighted for a brief time just south of Shell point, Florida in Apalachee Bay of the northeast Gulf of Mexico. It was moving towards the northeast, but dissipated before reaching land.									

STORM DATA AND UNUSUAL WEATHER PHENOMENA

AUGUST 1982

PLACE	DATE	TIME - LOCAL STANDARD	LENGTH OF PATH (MILES)	WIDTH OF PATH (YARDS)	NO. OF PERSONS		ESTIMATED DAMAGE		CHARACTER OF STORM
					KILLED	INJURED	PROPERTY	CROPS	

PLACE	DATE	TIME - LOCAL STANDARD	LENGTH OF PATH (MILES)	WIDTH OF PATH (YARDS)	NO. OF PERSONS		ESTIMATED DAMAGE		CHARACTER OF STORM
					KILLED	INJURED	PROPERTY	CROPS	

FLORIDA

Ft. Pierce, St. Lucie County	17	1337EST	-	-	-	-	-	-	-	Funnel Cloud
A funnel cloud was observed about 8 miles northwest of Ft. Pierce, Florida moving toward the northwest.										
Disney World, Orange County	17	1655EST	-	-	-	-	-	-	-	Funnel Cloud
A funnel cloud was observed by Orange County Sheriff Deputy about one mile west of Disney World, Florida moving toward the northwest.										
Naples, Collier County	18	1515EST	-	-	-	-	-	-	-	Funnel Cloud and Waterspout
A funnel cloud was observed over Naples Beach, Florida and a waterspout occurred in the Gulf of Mexico just west of Naples.										
Destin, Okaloosa County	20	1010CST	-	-	-	-	-	-	-	Waterspouts and Funnel Clouds
Several waterspouts and funnel clouds occurred over the Gulf of Mexico south of Destin and in the Choctawhatchee Bay area near Elgin AFB. One waterspout was observed 50 feet offshore from the Shoreline Towers Condominiums about 1/2 mile east of Destin East Pass. Another waterspout was in Choctawhatchee Bay just north of the Coast Guard station at Destin. No landfall.										
Dade City, Pasco County	20	1730EST	-	-	0	1	4	0	0	Wind
Strong winds from a line of thunderstorms blew a large oak tree onto a motor home causing considerable damage to the vehicle and minor injury to one of two occupants. Damage to the vehicle estimated at \$10,000.										
Cooper City, Broward County	21	1515EST	-	-	-	-	4	0	0	Wind and Hail
Strong winds estimated in excess of 50 mph uprooted about 40 trees, damaged several metal awnings, tore screening of enclosed swimming pools, and downed a few power lines in Cooper City, Florida, about 7 miles west of Fort Lauderdale. About 5 inches of rain fell in 90 minutes and marble-sized hail was observed. Damage estimated at \$6,000.										

9 GEORGIA

Chatham County	05	1325-1400EST	-	-	0	0	0	0	0	Hail
Hail up to 2 inches in diameter fell at the Savannah Airport.										
Laurens County	05	1630EST	-	-	0	0	3	0	0	Wind
Thunderstorm winds overturned a double-wide mobile home in East Dublin. The winds also damaged trees and power lines.										
DeKalb County	10	1430EST	-	-	0	0	0	0	0	Funnel Cloud
A funnel cloud was sighted near Stone Mountain.										
Long County	13	1945EST	-	-	0	0	4	0	0	Wind
Thunderstorm winds damaged four mobile homes in a trailer park.										
Dade County	17	0500-1300EST	-	-	0	1	6	0	0	Flesh Flood
Thunderstorms dropped up to 8 inches of rain, causing flash flooding. A 66-year-old woman was injured when she was swept away by the rain-swollen waters of Lookout Creek. Several roads became impassible. Railroad service was interrupted due to damage to railroad tracks and bridges. At least 10 homes, several businesses, and the sewage treatment plant were flooded in Trenton; several people had to be evacuated by boat. A few cars were also damaged by the flood waters.										
Toombs County	28	1500EST	-	-	0	0	3	0	0	Wind
Thunderstorm winds downed trees and power lines. Damage to a small metal building and a barn occurred near Lyons. Storefront signs were blown down in Vidalia.										

10 IDAHO

Ada, Canyon Counties	11	1330-1630 MST	-	-	0	0	6	5	-	Wind, Hail
A severe thunderstorm developed over Canyon County during the early afternoon and moved eastward of the City of Boise, Ada County. Winds of 60 m.p.h. were observed at the Boise Airport which was south of the most intense cell. Numerous trees were blown down as well as power and phone lines. Hail from 1/2 to 3/4 of an inch was reported by reliable spotters. Grain, potato, onion, and fruit crops suffered damage.										
Idaho County	20	Evening	-	-	0	0	5	0	0	Wind
Strong thundershowers lashed through Whitebird, Joseph, Clearwater, and Clear Creek, Idaho County. Many power poles were downed as peak wind gusts reached an estimated 50 m.p.h.										
Lost Valley Reservoir, Adams County	20	1800 MST	-	-	0	0	5	0	0	Wind
A strong wind storm swept through the Lost Valley Reservoir area near Tamarack in Adams County, leaving hundreds of fallen trees in its path. The storm also extensively damaged eight motor vehicles with two being totalled by falling trees.										
Minidoka, Cassia and Bingham Counties	20	Afternoon, Evening	-	-	0	0	0	6	0	Hail
Thunderstorms with large hail damaged or destroyed many crops. Up to twenty percent of the crops in Minidoka County may have been damaged by the hail. Potato and beet crops were extensively damaged in the Aberdeen area, Bingham County.										

11 ILLINOIS

Palatine, Cook County	1	2130CST	-	-	0	0	0	0	0	Hail
Hail as large as 1.75 inches was reported near Palatine causing no known damage.										
McLean County	4	1655CST	7	100	0	0	0	0	5	Tornado (F0)
Three miles southeast of Lexington (near Pleasant Hill) a tornado touched down and travelled southeastward for 7 miles. It lifted 0.5 miles north of Colfax causing crop damage.										
Rock Island and Mercer Counties	7	0005 to 0600CST	-	-	0	0	4	0	0	Flooding
Heavy rainfall during the night deluged local areas with as much as 5 inches of rain. Several rivers and creeks rose above their banks causing mainly urban flooding.										
Northern half	24	1100 to 2100CST	-	-	0	2	6	6	6	Wind and Flooding
Strong winds of as high as 65 knots accompanied by heavy rainfall damaged homes, buildings and crops in the northern half of the state. In St. Mary, Hancock County, an old church and several homes were demolished, injuring 2 persons. Near Colmar, also in Hancock County, a 165,000 ton grain bin was blown across railroad tracks and 2 smaller bins were twisted. In McDonough and Hancock Counties many acres of corn and beans were destroyed. A mobile home overturned and tree limbs were blown down in Fandon, McDonough County. A tree damaged a church near Bernadotte, Fulton County. One to 4 inches of rain fell in a short period of time on localized areas causing some flooding.										
McLean County	24	1325CST	23.5	300	0	0	6	6	6	Tornado (F2)
A tornado first touched down 3 miles west of Merna and travelled to the south edge of Cooksville. It then curved southeastward to 2 miles north of Route 9 before curving eastward again. It crossed the Ford County line before lifting. A church, farm buildings, homes, and out-buildings were destroyed. A total of 5 homes were destroyed and 125 were damaged; 1 mobile home was destroyed and 8 others were damaged; 65 services buildings were destroyed and 170 were damaged; 6 pieces of farm equipment were destroyed and 285 others were damaged. The estimated property damage was \$2.435 million. Most of the damage occurred in the Merna area. Many acres of corn and bean crops were severely damaged or destroyed.										
McLean County	24	1330CST	12.5	300	0	0	0	0	6	Tornado (F0)
Near I-55, 2 miles south of Shirley, a tornado touched down. It first moved southeast before turning northeast and caused crop damage.										
McLean County	24	1335CST	13	300	0	0	5	6	6	Tornado (F0)
On the west edge of Bloomington a tornado touched down and travelled straight east to just north of Arrowsmith before turning southeast. It lifted northeast of Saybrook. Crop and some building damage occurred.										

STORM DATA AND UNUSUAL WEATHER PHENOMENA

AUGUST 1982

PLACE	DATE	TIME - LOCAL STANDARD	LENGTH OF PATH (MILES)	WIDTH OF PATH (YARDS)	NO. OF PERSONS		ESTIMATED DAMAGE		CHARACTER OF STORM
					KILLED	INJURED	PROPERTY	CROPS	
ILLINOIS									
McLean County	24	1335CST	11.5	300	0	0	0	5	Tornado (F0)
	Another tornado touched down at the same time and travelled 11.5 miles from a point just south of Route 136 and east of I-55 to 3 miles northeast of Hayworth. It first moved southeastward until it was near the county line where it then turned northeastward toward Hayworth.								
Ford County	24	1429CST	0.8	33	0	0	5	5	Tornado (F0).
	In an open farm field near Clarence, a tornado touched down causing crop damage. It lifted 200 yards from several farm buildings.								
Ford and Champaign Counties	31	afternoon			0	0	5	5	Wind
	High winds destroyed a mobile home near Rantoul and demolished a barn. Crop damage was also reported.								
Southwestern sections	31	1900 to 2200CST			0	0	4	0	Wind
	Thunderstorms with high winds caused tree damage and power failures in localized areas of the extreme southwest during the evening hours.								
12 INDIANA									
Richmond, Wayne County	24	1550EST			0	0	5	0	Thunderstorm Winds
	Strong winds caused damage to a barn, silo, church steeple and a motel, which lost part of its roof, along a 1/8 mile wide path.								
Williamsport, Fountain County	24	1634EST			0	0	2	1	Thunderstorm Winds
	Trees down on State Road 28 between Williamsport and Attica.								
S. Tipton, Tipton County	24	1740EST			0	0	2	0	Thunderstorm Winds
	Trees and powerlines downed just south of Tipton.								
Boston, Wayne County	24	1745EST			0	0	3	3	Thunderstorm Winds
	Trees downed and a car spun around in the town of Boston. Just south of Boston a barn had both doors blown off and a 500 yard wide and a mile long strip of corn flattened.								
Bedford, Lawrence County	30	1425EST			0	0	5	0	Flash Flood
	Thunderstorms dumped over 4 inches of rain in the City of Bedford flooding the downtown business area.								
NW Brown County	30	1515EST			0	0	4	0	Flash Flood
	Heavy rains from thunderstorms washed out a bridge on State Road 135.								
13 IOWA									
Woodbury County	03	2000 to 2100 CST			0	0	5	0	Severe Thunderstorm
	A strong thunderstorm produced winds of 50-70 MPH, pea-sized hail and heavy rain. A roof was blown off a warehouse in Sioux City, causing more than \$100,000 damage. Electric lines were downed around the County. Tree limbs and branches were also downed.								
Milford Dickinson County	04	0415 CST			2	0	4	0	Lightning
	A Milford couple died in a fire touched off when lightning struck their home. Firemen found the house on fire and the couple dead when they arrived about an hour after the lightning strike. Neighbors were awakened by the thunderstorm and knew the lightning strike was close but did not know it struck the house next door.								
Shelby and Harrison Counties - Extreme West Central Iowa	04	Early Afternoon			0	0	3	4	Flash Flooding
	Four inch plus rains caused roads to be under water and crop damage due to lowland flooding.								
Keota, Keokuk County	04	1900 CST			0	0	4	0	Severe Thunderstorm Wind
	A brief, highly localized wind storm resulted in heavy damage to trees, glass and roofs. The rear part of a Doctor's Office collapsed. Vehicles were heavily damaged by falling tree limbs. All damage was in an area 10 blocks long by 3 blocks wide.								
Near Crimes, Polk County	04	2200 CST			0	0	2	0	Lightning
	A man and his son were struck by lightning and knocked unconscious at a campground. They were sitting outside their camper when the storm began. When they got up from their lawnchairs to go inside, lightning struck them.								
IOWA									
East Central Iowa	07	0100 CST to 0800CST			0	0	5	0	Flash Flooding Heavy Rains
	Thunderstorms moving 5 to 10 MPH across Eastern Counties deposited in excess of 5 inches of rain. Lowden (Cedar County) received 4 1/2 inches of rain in a 3-hour period. Flash flooding resulted from heavy runoffs. Many homes and businesses had heavy flooding in basements. Creeks came out of their banks. Many roads were washed out.								
Near Mount Vernon (Linn County)	07	1855 CST							Funnel Cloud
	Funnel Cloud observed with no movement. Reported as "Just Hanging There".								
Northeast Henry County	07	1935 CST							Funnel Clouds
	Numerous reports of Funnel Clouds								
Page and Fremont Counties, Extreme Southwest Iowa	29	1930 CST to 0100 CST			0	0	4	5	Severe Thunderstorms, Flooding
	Heavy rain forced 8 to 10 inches of water over Highway #2 about 5 miles West of Clarinda (Page County). High winds destroyed a roof on a Church 4 1/2 miles Southwest of Clarinda. Two to four inches of rain across Fremont County forced the Nishnabotna River at Hamburg 3 to 5 feet over flood stage and caused lowland flooding.								
Extreme Northwest Iowa	31	2230 CST to Midnight			0	0	4	5	Severe Thunderstorms
	Winds of 70-80 MPH coupled with pea to marble size hail caused extensive crop damage mainly in Sioux, O'Brien, Plymouth and Clay Counties. Numerous farm fields in a 30-mile stretch east of Primghar were flattened. The wind knocked nine windows out of a farm home near Royal. Several trees were uprooted and power lines downed. The storm spawned two Funnel Clouds (recorded separately).								
Near Matlock (Sioux County)	31	2245 CST							Funnel Cloud
	Three Civil Defense Spotters sighted Funnel Clouds. No ground contact.								
4 Miles Southeast of LeMars (Plymouth County)	31	2348 CST							Funnel Cloud
	Civil Defense Spotter sighted Funnel Cloud. No ground contact								
14 KANSAS									
Victoria, Ellis County	04	Afternoon			0	0	4	0	Lightning
	Lightning struck and set fire to an oil tank battery 3 miles south of Victoria.								
Russell, Russell County	04	1500-1630CST			0	0	5	0	Lightning
	Lightning at Russell damaged an electrical transformer and the police communications console, and also set fire to a home.								
Republic and Cloud Counties	04	1530-1630CST			0	0	4	4	Wind
	A severe thunderstorm moved across southeast Republic and eastern Cloud Counties. The wind was estimated at 60 mph in Wayne and measured at 59 mph in Concordia at 1558CST. Minor damage resulted.								
Southern Riley and Southwest Pottawatomie Counties	04	1720-1800CST			0	0	3	0	Wind, Hail
	Strong thunderstorm winds caused minor damage from west of Manhattan to Wamego. The wind speed reached 79 mph and 3/4 inch hail fell at the Manhattan Airport at 1728CST.								
Barton County	04	1900-2000CST			0	0	5	0	Lightning
	Several homes were struck by lightning in the Great Bend and Hoisington areas. An oil tank farm 2 miles east of Hoisington was also hit.								
Greenbush, Crawford County	11	0400CST			0	0	6	0	Lightning
	Lightning set fire to the Catholic Church in Greenbush. The Church and contents were a near total loss.								
Johnson, Wyandotte, Leavenworth, Atchison and Doniphan Counties	12	1500-13	0900CST		0	0	6	0	Rain, Flooding
	Thunderstorms dumped 4 to 8 inches of rain along and 30 miles west of the Missouri River from St. Joseph, MO to Kansas City. Minor surface flooding occurred in parts of the listed counties. More significant flooding took place in part of Elwood in Doniphan County. The heaviest rain (6-12 inches) drenched Overland Park from 2100 to 0400CST. Surface and street flooding was widespread in Johnson County, and several vehicles were washed away. More severe flooding occurred on the Missouri side of Kansas City.								
McPherson County	14	1700CST			0	0	4	0	Wind
	Thunderstorm winds damaged a construction building at the Roxbury Turn-Off on Interstate Highway 135.								
Kismet, Seward County	23	0800CST			0	0	4	0	Lightning
	Lightning struck the scales office at a grain elevator in Kismet. The resulting explosion caused considerable damage.								

STORM DATA AND UNUSUAL WEATHER PHENOMENA

AUGUST 1982

PLACE	DATE	TIME - LOCAL STANDARD	LENGTH OF PATH (MILES)	WIDTH OF PATH (YARDS)	NO. OF PERSONS		ESTIMATED DAMAGE		CHARACTER OF STORM
					KILLED	INJURED	PROPERTY	CROPS	
— KANSAS —									
Sedgwick County	26	1730CST			0	7	5	0	Wind
Fierce thunderstorm winds destroyed three mobile homes and caused seven minor injuries at Haysville. A building was also destroyed by downburst winds on the south side of Wichita.									
El Dorado, Butler County	26	1730CST			0	1	4	0	Wind
Thunderstorm winds dropped tree limbs on a mobile home and left it a total loss 1.5 miles south of El Dorado. A semi-trailer truck was also turned on its side near the mobile home. The truck's driver was injured in the mishap.									
Augusta, Butler County	26	1800CST			0	0	4	0	Wind
Thunderstorm winds measured at 88 mph at the Augusta Airport turned over one airplane and damaged two others. Six hangar doors were also damaged. The winds also downed tree limbs and a few power poles in Augusta.									
Ellsworth County	29	1630-1800CST			0	0	5	4	Hail, Wind
Severe thunderstorms dropped golfball size hail at Black Wolf at 1706, and 3/4 inch diameter hail at Ellsworth at 1717 and at Kanopolis at 1800CST. Strong winds inflicted minor damage to several buildings and the hail knocked out a few windows.									
Kismet, Seward County	29	1745CST	1	Narrow	0	0	5	0	Tornado (F1), Wind
A tornado took a narrow path a mile long to the east from 2.5 miles west of Kismet. The twister destroyed a mobile home, and damaged a hay shed, barn, and some graineries. Fierce thunderstorm winds also damaged a mobile home 3 miles south of Kismet at about the same time the tornado was on the ground.									
Hickerson, Reno County	29	1909CST			0	0	3	3	Hail
Hailstones an inch and a quarter in diameter fell at Hickerson. Only minor property and crop damage resulted.									
Larned, Pawnee County	29	1930CST			0	0	5	0	Lightning
Lightning set fire to a barn 7 miles south of Larned. The barn and the hay it contained were a total loss.									
Wichita, Sedgwick County	29	2100-2400CST			0	0	4	0	Lightning, Wind, Flooding
Violent lightning, strong wind gusts, and heavy rains hit Wichita. The lightning set nearly 40 fires. The wind speed reached 61 mph at the Municipal Airport at 2122CST. Runoff from the rain caused a good deal of street flooding in low-lying areas.									
Thomas and Sheridan Counties	30	Evening			0	0	5	4	Wind, Hail
Thunderstorms with intense lightning and strong winds damaged trees, a few buildings and power lines from northwest of Oakley to around Hoxie. Hail also damaged crops along the storm's path.									
SPECIAL HAIL SUMMARY									
Kansas-Oklahoma Hail Loss Service reports indicate hail was especially damaging to crops on the following dates in the listed counties.									
29 Meade, Seward									
30 Sheridan, Thomas									
15 KENTUCKY									
Fleming, Nicholas, Robertson, Mason Counties	5	All Day			0	0	3	4	Heavy Rains
Up to 5 inches of rain fell over these eastern Kentucky counties causing extensive damage to crops. About 300 farmers lost most of their crops.									
Martin County at Pigeon Roost	23	1600EST			0	1	5	3	Flash Flood
A flash flood on Wolf Creek and Meathouse Creek in Martin County caused considerable damage to homes and bridges in the Pigeon Roost area of eastern Kentucky. The flash flood was a classic one with a moving wall of water reported. The level in the creek was 5 inches one minute with flooding very shortly thereafter. 16 families needed assistance and one person was hurt as she tried to reenter a flooded home.									
Scottsville Kentucky Allen County	23	Afternoon			1	0	2	1	Lightning
A man was killed by lightning on a farm 8 miles south of Scottsville near Bailey's point.									
McCracken County Livingston County	24	2200CST-2230CST			0	0	3	2	Severe Thunderstorm - Winds
Winds gusting close to 60 miles an hour downed power lines and toppled a few small trees.									
— KENTUCKY —									
Hart County	25	Early Morning			0	0	5	3	Flash Flood
30 Hart County residents were evacuated when flash flooding occurred along areas streams. 21 houses were damaged by flood waters which were estimated to be 20 feet above normal levels. Several bridges were washed out as were a few roads.									
Southern third of State	30-	Evening			0	0	6	4	Floods and Flash Floods
Up to 8 inches of rain produced widespread flooding over the southern third of the State. All counties from the southwest tip through south central Kentucky reported some type of flood damage from flooded basements to severe flash flooding. Following are some of the more significant flash flood type reports.									
Monroe County near Granville..mobile home park evacuated due to high water.									
Marshall County..several homes flooded due to high water.									
Allen County..A bridge washed out.									
Metcalfe County..4 inches of rain resulted in extensive damage to crops									
Barren County..A bridge was washed out and several head of cattle reported carried downstream and presumed lost.									
Russell County..several roads washed out. The most serious damage was to a basement type home where a wall collapsed. 7.8" of rain fell over a 7 hour period. A. F. Owens who records weather observations said that this exceeds all records kept there since the 1930s. Several cars parked near flooding streams were also washed away.									
Extensive damage to roads and some bridges was also indicated in the counties of McCracken, Calloway, Livingston, Trigg, and Clinton.									
16 LOUISIANA									
Moorehouse Parish	06	1205CST					1		High Wind
A thunderstorm struck the community of Stevenson southwest of Bastrop, La and was accompanied by high winds. Large trees were uprooted. Several of the trees were 3 feet in diameter.									
Ascension Parish	06	1230CST					?	?	Large Hail
A severe thunderstorm accompanied by 1 inch diameter hail struck the town of Gonzalas, La. No damage was reported.									
Orleans Parish	06	1625CST							Waterspout
A large waterspout over Lake Pontchartrain was observed for 30 minutes from Lakefront Airport. No damage was reported.									
Orleans Parish	08	1342CST					?	?	SVR TSTM
A severe thunderstorm moved through the eastern portion of New Orleans accompanied by torrential rains and damaging winds. Rainfall amounts of 3 inches in less than 1 hour caused considerable severe street flooding. Lakefront airport recorded winds of 50 knots. At least 3 planes were flipped over by the winds. No estimate of damage was available.									
Lafayette Parish	10	1250CST							Funnel cloud
A funnel cloud was reported by a pilot several times 10 miles south of Lafayette, La.									
Lafayette Parish	10	AFTN							Lightning
Lightning from a thunderstorm struck two houses in Lafayette causing minor damage to both. No estimate available.									
Evangeline Parish	12	AFTN							Lightning
Lightning struck a roof at a Catholic student center causing minor damage. No estimate available.									
Jefferson Parish	22	0850 CST							Funnel Cloud
A funnel cloud was reported 3 miles west of Venice, La.									
17 MAINE ————— NO REPORT RECEIVED									

STORM DATA AND UNUSUAL WEATHER PHENOMENA

AUGUST 1982

PLACE	DATE	TIME - LOCAL STANDARD	LENGTH OF PATH (MILES)	WIDTH OF PATH (YARDS)	NO. OF PERSONS		ESTIMATED DAMAGE		CHARACTER OF STORM
					KILLED	INJURED	PROPERTY	CROPS	
18 MARYLAND and D.C.									
Washington, D.C.	17	Night			0	0	3	0	Wind, Rain
Mostly minor damage was reported as severe thunderstorm activity struck the area. At the Washington Channel, six sailboat trainees were dunked when the storm hit. All rescued without injury. Some scattered power outages were also reported.									
Aberdeen	23	2100EST			0	0	5	0	Wind
Described as the most severe storm of the summer, as it roared through a housing development at Aberdeen Proving Grounds. Siding was torn from several units and at least one had severe roof damage. In addition, dozens of automobile windows were either blown out or smashed by flying debris. Total damage was in excess of \$50,000.									
19 MASSACHUSETTS ————— NO REPORT RECEIVED									
20 MICHIGAN									
Painesdale to Chassel, Houghton County	02	2130EST	7		0	0	0	0	Hail
Hailstones to 1 1/2 inches. Minor structural damage.									
near Pelkie, Baraga County	02	2225EST			0	0	4	0	Hail
Hailstones to 3/8 inches. Greenhouse, poultry pen and windshield destroyed.									
Stannard Rock, Lake Superior County	02	Evening			0	3	5	0	Wind and Waves
Amphibious aircraft moored to Rock torn loose and sunk by sudden storm. 3 men on board took refuge on Rock, suffered exposure, rescued by Coast Guard following morning.									
Pentwater, Oceana County to Grant, Newaygo County	03	0100-0300EST	45	18000	0	0	5	0	Thunderstorm
Oceana 0100-0245EST. 1" to 5" rain in 45 minutes. Streets and basements flooded, roads washed out, water main broken, buildings damaged by water. Building set afire, radio station and power lines damaged by lightning. Newaygo 0200-0300EST. 1" to 4" rain. Several building fires and power outages due to lightning. Summer home destroyed.									
North Central Lower Peninsula	03	1430-1900EST			0	1	5	0	Thunderstorm-Lightning
Antrim County 1430-1500. Trees blown down and split by lightning. Other minor wind damage. Crawford County 1500. Minor wind damage. Roscommon County 1530-1630. Minor wind damage. Gladwin County 1615-1730. Power lines down. Alcona County 1730. Funnel cloud reported 2 SW Mikado. Bay County 1730-1815. Man on golf course injured by lightning. Two barns destroyed, one damaged by wind. Trees and power lines down. Report of a tornado could not be verified. Saginaw Bay 1750. Boat capsized. Two men rescued from water. Saginaw County 1800-1900. Mobile home rolled over and destroyed. Trees and power lines down. Five small lightning fires. Funnel cloud reported near Auburn.									
Muskegon, Oceana, and Newaygo Counties	03	2100-2230EST			0	1	4	0	Thunderstorms-Lightning
Man injured by lightning at Twin Lake. Several minor lightning fires. Trees and power lines down. Some washouts. Boats and docks damaged.									
Coopersville, Ottawa County	04	0020EST			0	0	5	0	Lightning
Church destroyed by fire.									
6 Miles SE Muskegon, Muskegon County	20	0030EST			0	0	0	0	Lightning
House destroyed by fire.									
21 MINNESOTA									
Grant, Douglas and Ottertail Counties	17	0030-0130 CST			0	0	4	4	Wind
Strong Thunderstorm Winds downed trees, flattened corn and sunflower fields and caused power outages from Elbow Lake to just West of Ashby. 4 miles West of Ashby a trailer home was flipped over on top of a pickup truck. A portion of a room was blown off a home on the Southwest corner of Ten Mile Lake in Ottertail County. Power outages were also reported in Evansville and Fergus Falls									
Beltrami County Itasca County Cass County	18	1700-1755 CST			0	0	5	4	Wind-Hail
Thunderstorm winds estimated at 80 mph and golfball size hail struck Blackduck at 1700 cst then moved Southeast across Lake Winnibigoshish reaching the Resort area around Bena at 1755 cst. Nearly one-half of the buildings in Blackduck were damaged. Three sides of a sawmill were blown out and heavy lumber was scattered. Numerous trees were uprooted and power lines knocked down. Hail and heavy rain caused crop damage in the area and water was running a foot deep in the streets of Blackduck following the storm. Similar damage was reported around Bena. Numerous cabins were damaged, many from falling trees. Power and phone lines were also knocked down.									
Bena (Cass County)	18	1755 CST	1/2	narrow	0	0	3	0	Tornado (F1)
A tornado touched down briefly at No Oak Lodge near Bena. Some trees were up-rooted while others were snapped off 6 feet above the ground. Damage to buildings was due mainly to falling trees.									
Northwest	21	1600-2010 CST			0	1	5	5	Wind-Hail
Thunderstorm winds and hail caused extensive damage to building and crops from Northwest to Central Minnesota. Areas were the storm hit hard were from Middle River in Marshall County to just Northeast of Fosston at 1810 pm. The storm went into Hubbard County between Lake George and Park Rapids at 710 pm and continued to Cross Lake in Crow Wing County. Three farms were heavily damaged nine miles Northeast of Fosston where two barns were knocked down as well as an assortment of out buildings. Livestock were killed and golfball size hail destroyed corn, wheat, sunflower and small grain fields. A woman was injured by a swinging door and hospitalized with contusions. Winds gusted to 85 mph in Park Rapids were damage was reported to Businesses and Private Homes. Numerous trees and power lines were knocked down. Crop damage around Park Rapids was reported to be mainly from the high winds.									
West Central	21	1730-2130 CST			0	1	4	?	Wind-Hail
Thunderstorms spread gusty winds and hail up to the size of golfballs from South of the Moorhead through the Fergus Falls area to near Alexandria. South of Fergus Falls at Ten Mile Lake, winds over turned a Mobile Home injuring a woman. Nearby a cabin was smashed by a falling tree.									
LeSueur County	22	0050 CST			0	0	4	0	Wind
Thunderstorms with high wind destroyed four farm buildings and caused extensive damage to the roof of a farm house 6 miles Southeast of LeCenter.									
Seafouth (Redwood Co.)	22	0500 CST			2	0	3	0	Lighting
Lightning struck an antenna on a home setting the house ablaze killing a woman and her daughter.									
Traverse, Southwest Grant and Northwest Stevens Counties	31	1630-1730 CST			0	0	5	5	Wind, Rain, Hail
A system of thunderstorms containing golf ball size hail, two to four inches of rain and winds up to 75 mph cut a path of about 150 square miles across Traverse, Grant and Stevens counties. Large areas of crops were destroyed, 150 homes were damaged and several fram buildings were destroyed, hail striped bark off of trees and killed numerous birds.									
Murray Co.	31	2215 CST			0	0	3	4	Wind, Hail
90 mph wind and pea sized hail damaged crops in Northern Morry County near Carvin. Boats were damaged on several area Lakes.									

STORM DATA AND UNUSUAL WEATHER PHENOMENA

AUGUST 1982

PLACE	DATE	TIME - LOCAL STANDARD	LENGTH OF PATH (MILES)	WIDTH OF PATH (YARDS)	NO. OF PERSONS		ESTIMATED DAMAGE		CHARACTER OF STORM
					KILLED	INJURED	PROPERTY	CROPS	

PLACE	DATE	TIME - LOCAL STANDARD	LENGTH OF PATH (MILES)	WIDTH OF PATH (YARDS)	NO. OF PERSONS		ESTIMATED DAMAGE		CHARACTER OF STORM
					KILLED	INJURED	PROPERTY	CROPS	

22 MISSISSIPPI

Warren Co.	1 0300 to 0700 CST	0 0 ? ?	Flash flooding	Heavy thunderstorms dropped about 6 inches of rain on already saturated ground in Warren County. This produced flash flooding along Darden Creek and Hatcher Bayou. About 40 homes were flooded, some with about 2 feet of water. Fifteen of these homes were in the Hamilton Heights subdivision of Vicksburg. There were no injuries and no damage estimates were available.					
Jackson, Hinds Co.	1 0400 to 0800 CST	0 0 ? 0	Flash flooding	Heavy thunderstorms caused urban flash flooding at numerous locations in the City of Jackson. About 20 apartments and 4 houses were flooded. Two outdoor industrial storage yards were flooded. About 40 streets in the city were closed due to high water. No injuries were reported.					
Warren Co.	6 1300CST	0 0 ? 0	High winds	Thunderstorms produced widespread but generally minor wind damage across the City of Vicksburg. About 30 trees were uprooted.					
Clarksdale, Coahoma Co.	14 1100 to 1400 CST	0 0 5 0	Flash flooding	Thunderstorms dropped from 5 to 7 inches of rain on the city of clarksdale in a 6 hour period. This produced flooding over a 5 block area of the city. About 25 homes were flooded, some with as much as two feet of water. No one was injured. Damages were estimated to be over \$100,000.					

23 MISSOURI

St. Louis City	6 2145CST	0 0 4 0	Heavy Rain	Part of a building fell into a hole which was caused by excessive rain. Flash flooding was common throughout the city as 3 to 5 inches of rain fell over an area already saturated.					
Jackson	13 0100CST	4 0 7 ?	Flash Flooding	Rain began falling in the Kansas City Metropolitan area the morning of Thursday, August 12 and heavy thunderstorms again hit the area on the evening of the 12th. More than 12 inches of rain was officially recorded at Raytown and unofficial reports of higher amounts were received. The serious flooding came after midnight on the 13th. Two motorists drowned in their flooded automobiles when they drove into deep water during the darkness. Another drowned when trying to escape a flooded car. The 4th death was due to a man having a heart attack while bailing water out of a basement.					
Cape Girardeau	24 2045CST	0 0 2 0	Damaging Wind	Winds to 60 mph damaged trees and power lines in Cape Girardeau.					
Boone	26 1458CST	0 0 0 0	High Wind	Wind gusts to 58 mph reported at the Columbia Regional Airport.					
Pettis	26 1955CST	0 0 0 0	High Wind	Winds 50 to 70 mph reported just north of Sedalia.					
Pettis	26 2043CST	0 0 4 0	Damaging Wind	Damage at State Fair in Sedalia included a number of trees and power lines. Some very minor injuries also reported.					
Boone	26 2000-2100CST	0 0 4 3	Flash Floods	Excessive rains of 5 inches or more in Columbia caused considerable flash flooding. The Caldwell Bridge was washed out and several persons were rescued from their cars due to high water.					
Dunklin	27 0110CST	0 0 3 0	Damaging Wind	High winds downed trees and lines in and around Malden.					

24 MONTANA

Liberty, Hill Counties	1 2000 to 2200MST	0 0 0 6	Hail	Hail an inch in diameter, accompanied by a strong wind, destroyed crops from north of Joplin to north of Kremlin.					
Fergus County	11 1600MST	0 0 0 5	Hail	Two inch hail destroyed crops ready for harvest in the Denton area.					
Custer County	16 1545MST	0 0 5 5	Wind, Hail	Winds of 64 MPH hit the Miles City area while to the north, hail was destroying grain crops.					
Carter County	16 Evening	0 0 5 5	Hail	Hail as large as 1 1/2 inches in diameter caused damage to homes and crops north of Ekalaka.					
Chester	17 Evening	0 0 5 0	Wind	Strong winds caused considerable damage to outbuildings and trailers.					
Ravalli, Powell Counties	20 2230MST	0 0 5 0	Wind	Strong winds blew down numerous trees, a number of which landed on homes and other buildings.					
Helena Valley	20 2320MST	0 0 5 0	Wind	A destructive wind storm moved through the Helena Valley causing damage to property and blowing down many trees.					

25 NEBRASKA

Jefferson County	01 1600CST	0 0 3 0	Damaging Winds	Strong, straight thunderstorm winds damaged a barn and uprooted trees just south of Fairbury.					
Thomas County	03 1620CST	0 0 0 0	Funnel Cloud	A funnel cloud was reported 10 miles south of Thedford.					
Blaine, Loup and Garfield Counties	03 1700CST -1900CST	0 0 5 4	Damaging Winds and Hail	Thunderstorm winds of 50 to 60 m.p.h. downed power lines and uprooted trees in Brewster, Taylor and to the north of Burwell. One inch hail damaged crops and trees in Taylor and Brewster.					
Custer County	03 1758CST	0 0 0 0	Funnel Cloud	A funnel cloud was reported just west of Anselmo.					
Custer County	03 1855CST	0 0 0 4	Hail	Three-quarter inch hail damaged crops in the vicinity of Arnold.					
Dakota County	03 2015CST	0 0 3 2	Damaging Winds	Around South Sioux City, 50 to 70 m.p.h. thunderstorm winds blew down trees and power lines.					
Stanton and Pierce Counties	04 0000CST -0400CST	0 0 5 3	Flash Flooding	Heavy rains up to 7 inches at Stanton caused flooding along Willow Creek in Pierce County and in and around Stanton.					
Frontier County	04 1330CST	0 0 0 0	Funnel Cloud	A funnel cloud was reported 6 miles northwest of Curtis.					
Lincoln County	04 1340CST -1500CST	0 0 2 3	Hail	One and half inch hail caused property and crop damage around Wellfleet.					
Custer County	04 1515CST	0 0 0 4	Hail	One and three-quarter inch hail caused crop damage between Callaway and Broken Bow.					
Colfax, and Madison Counties	04 2100CST -2300CST	0 0 4 0	Lightning	Severe electrical storm caused power failures and considerable damage to transmitter sight of KNEN Radio.					
Cedar County	04 2200CST -2300CST	0 0 3 3	Damaging Winds	Forty to fifty m.p.h. thunderstorm winds caused considerable tree damage in Belden and Randolph.					
Seward County	11 1950CST	0 0 0 4	Damaging Winds	Thunderstorm winds blew the roof off two rooms of a Seward motel.					

STORM DATA AND UNUSUAL WEATHER PHENOMENA

AUGUST 1982

PLACE	DATE	TIME - LOCAL STANDARD	LENGTH OF PATH (MILES)	WIDTH OF PATH (YARDS)	NO. OF PERSONS		ESTIMATED DAMAGE		CHARACTER OF STORM
					KILLED	INJURED	PROPERTY	CROPS	

PLACE	DATE	TIME - LOCAL STANDARD	LENGTH OF PATH (MILES)	WIDTH OF PATH (YARDS)	NO. OF PERSONS		ESTIMATED DAMAGE		CHARACTER OF STORM
					KILLED	INJURED	PROPERTY	CROPS	

NEBRASKA

Colfax County	12	0500CST -0600CST			0	0	5	3	Flash Flooding
Rain up to 4 inches in 90 minutes caused lowland and basement flooding in Richland and northern Schuyler.									
Saunders County	12	Late Afternoon to Evening			0	0	5	6	Flash Flooding
Six to 9 inches of rain around Morsefield and southwest of Cedar Bluffs caused crop and road damage. Sand and Silver Creeks were forced out of banks from Colon to Ashland. Lowland flooding occurred in the east side of Wahoo. To the east of Wahoo, 2 to 3 feet of water covered Highway 77-92 and railroad tracks were washed out.									
Otoe County	12	Evening -13 thru Early Morning			0	0	4	5	Flash Flooding
Heavy rain caused crop damage along with washing out roads and bridges. 10 1/2 inches of rain was reported at Douglas, and 5 1/2 inches at Syracuse. Water surrounded vehicles and filled some basements.									
Johnson and Pawnee Counties	12	Evening -13 thru Early Morning			0	0	4	5	Flash Flooding
Six to 9 inches of rain fell around the Tecumseh and Table Rock area. Bridges were damaged, cars swept off the road and 40 feet of railroad track washed out south of Humboldt. Considerable lowland crop damage.									
Richardson County	12	Evening -13 thru Early Morning			0	0	4	6	Flash Flooding
Five to 7 inches of rain fell in the Humboldt area, flooding bottomlands, damaging crops. This rainfall in combination with upstream heavy rain forced the Nemaha River out of banks from Salem thru Falls City. Roads were under water south and west of Falls City. Twenty feet of railroad tracks were washed out south of Humboldt.									
Cass County	13	0145CST			0	0	3	3	Flash Flooding
Heavy rain forced Weeping Water Creek out of banks with bottomland flooding.									
Red Willow County	14	0115CST			0	0	4	0	Lightning
Lightning damaged power station at McCook.									
Hall County	14	0935CST			0	1	0	0	Lightning
A teenager was injured when struck by lightning near the entrance of a Grand Island restaurant.									
Dawes County	18	2025CST			0	0	4	0	Damaging Winds
Thunderstorm winds estimated to 90 m.p.h. at Chadron caused considerable property damage.									
Kimball County	19	1800CST			0	0	?	5	Hail
Three inch hail damaged crops in the vicinity of Dix. Heavy rain also fell.									
Hall, Hamilton, Clay, York and Fillmore Counties	20	0745CST -0915CST			0	0	4	4	Flooding
Heavy rain flooded streets and underpasses along with a few basements in Grand Island. Fields and low lying areas flooded in Hall, Hamilton, southern York, Clay and Fillmore counties. Highway 34 west of Phillips was covered by water.									
McPherson County	22	0000CST			0	0	3	4	Hail and Lightning
One inch hail heavily damaged corn crops in the Tryon area. Lightning caused damage to a house and haystacks.									
Dawes County	23	1731CST			0	0	0	?	Hail
One inch hail fell at Chadron with no damage reported.									
Dawes County	23	1754CST	11	40	0	0	2	4	Tornado (F1)
A tornado touched down at intervals from 12 miles southwest of Chadron southeast to 15 miles south of Chadron. Track was mainly through rangeland and portions of Nebraska National Forest.									
Sheridan County	23	1830CST			0	0	4	4	Hail
Two inch hail caused property and crop damage around Ellsworth.									
Sheridan County	23	1855CST 1/8	30		0	0	0	0	Tornado (F0)
A tornado touched down briefly in rangeland 16 miles northeast of Alliance.									
Dawes County	23	1952CST			0	0	?	?	Hail
One and a half inch hail fell in the Chadron area. No damage reported.									

NEBRASKA

Sheridan County	23	2000CST -2200CST			0	0	6	7	Hail
Two and a half inch hail with heavy rain caused considerable property and crop damage from the Antioch region to Bingham.									
Dawes County	23	2117CST			0	0	4	4	Damaging Winds and Hail
One and a half inch hail and 65 m.p.h. winds caused property and crop damage north of Crawford.									
Dawes County	23	2158CST			0	0	0	0	Funnel Cloud
A funnel cloud was reported in the vicinity of Crawford.									
Grant and McPherson County	23	2305CST -24 -0100CST			0	0	3	5	Hail and Lightning
Thunderstorm began in Grant County and moved southeast to Tryon dropping 1 inch hail. Ashby reported windows in town broken out by hail. Crop damage was reported around Tryon along with lightning damage to a home.									
Sherman and Greeley Counties	24	0300CST -0400CST			0	0	4	4	Damaging Winds
Thunderstorm moved from east of Broken Bow through Loup City and then to near Greeley. Winds were estimated to 70 m.p.h. causing tree damage and power outage in Loup City. Tree damage also occurred at Sherman Dam and in Greeley.									
Colfax County	24	0400CST			0	0	3	0	Damaging Winds
Thunderstorm winds caused tree damage in Clarkson.									
Burt County	29	2000CST			0	0	2	3	Lightning
Near Craig, lightning killed a cow and started a haystack fire.									
Red Willow County	30	1840CST			0	0	4	4	Damaging Winds
Thunderstorm winds at McCook blew out windows and damaged roofs. Some crops in the area also flattened.									

NEVADA

Boulder City- Searchlight-Jean	11-12	Began PM on 11th Highway 95			0	0	4	0	Flash Flood
under 3 feet of water at times.									
Caliente-Pioche	12	1300-1700PST			0	0	5	0	Flash Flood
Portion of railroad track washed out.									
Indian Springs	12	UNK			0	0	0	0	Funnel Cloud
Reported by U.S. Air Force Pilot.									
Searchlight	13	1220PST			0	0	4	0	Flash Flood
Minor damage due to heavy rain and road flooding.									
Searchlight Cottonwood Wash	23	PM			2	0	4	0	Flash Flood
Lightning killed one at Las Vegas Wash on Lake Mead. A second person drowned in auto at Blue Diamond.									
Searchlight to Laughton	25	Afternoon			0	0	4	0	Flash Flood
Highway 95 closed from Wednesday afternoon till 10 AM Thursday.									
Eastern Nevada, Northern Nye County, Mahattan, 30N of Tonopah	26	0530PST			0	0	3	0	Flash Flood
Water and Debris across Highway 6.									
Coaldale, 35 W of Tonopah	27	1418PST	UNK	UNK	0	0	0	0	Tornado (F0)
Reported by Pilot									
30 E Tonopah	27	1545PST			0	0	3	0	Flash Flood
Water Across Highway 6.									
Tonopah West to California State Line	27	1847PST			0	0	3	0	Flash Flood
Water and Debris across Highway									
Gabbs- Mina	27	2000PST			0	0	3	0	Flash Flood
Minor damage to roads due to water and debris.									

STORM DATA AND UNUSUAL WEATHER PHENOMENA

AUGUST 1982

PLACE	DATE	TIME - LOCAL STANDARD	LENGTH OF PATH (MILES)	WIDTH OF PATH (YARDS)	NO. OF PERSONS		ESTIMATED DAMAGE		CHARACTER OF STORM
					KILLED	INJURED	PROPERTY	CROPS	
27 NEW HAMPSHIRE ——— NO REPORT RECEIVED									
28 NEW JERSEY ——— NONE REPORTED									
29 NEW MEXICO									
Albuquerque, Bernalillo County	8	Afternoon			0	0	5	0	Flash Flooding
Thunderstorms dumped one to two inches of rain on Albuquerque, causing street damage.									
Zuni, McKinley County	12	Afternoon			0	0	5	0	Flash Flooding
Thunderstorms dumped a considerable amount of rain over the area, causing streets to flood and nine families to be evacuated in the Village. The next day two boys lost their lives in swollen streams.									
Portales, Roosevelt	16	Afternoon			0	0	4	0	Lightning
Two homes were set on fire by lightning.									
Eagle Nest, Colfax County	22	Afternoon			0	2	0	0	Lightning
Two people were injured and ten others were knocked unconscious by lightning.									
30 NEW YORK, Coastal									
Cutchogue, L.I.	25	1500EST	1/2	15 to 20	0	0	?	?	Tornado (F0)
A small tornado touched down at Fisherman Beach in Cutchogue, L.I. overturning several small boats. The property damage in the area was minimal. A few windows were shattered. Most noticeable were the shearing off of trees and limbs. The storm was first observed just north of Route 25 and travelled in a skipping pattern. Very little thunder, lightning or precipitation occurred. FPP 001									
30 NEW YORK, Central									
CAPITAL DISTRICT	2	1600EST	--	--	0	0	3	0	°C HEAVY RAIN
Thunderstorms dumped heavy rain in the area and as a result one person had to be rescued from an automobile because water spilled over car windows and into passenger compartment.									
WHITESBORO, ONEIDA COUNTY	9	1600EST	--	--	--	2	4	1	LIGHTNING
Two golfers were hit by lightning during a thunderstorm. Both were under a tree at the time. One was just shaken while the other was struck in the chest and the lightning exited thru his left foot. He suffered internal and external burns and heart shock. Friends revived him using C.P.R. He lost most of his clothing and one golf shoe.									
PUTNAM CO.	9	1748EST	--	--	--	--	°C	°C	THUNDERSTORMS
Thunderstorms with strong winds tore the roof off a shopping center (13 stores). WSFO said "it was probably straight line winds".									
ULSTER COUNTY	25	1320EST	3	--	0	0	9	0	°C WIND DAMAGE/HEAVY RAIN
SEVERE DAMAGE occurred in Town of Marlborough in Ulster County. An Elementary School suffered over one million in structure damage, ripping off the roof and allowing rain to fall into the open structure. Wind also overturned an empty mobile home, a concrete block building, and a gas main shut off valve. Occupants of school noted a pressure change, and roaring sounds.									
30 NEW YORK, Western									
Wheatfield, Lockport, Middleport in Niagara County; City of Rochester; Clarence, Erie County	02	Morning			0	0	3	-	Rain, Wind & Lightning
Lightning strikes ignited houses in Wheatfield, Lockport, and Middleport. Firemen prevented fire to spread and left owners with minor damages. Heavy rains flooded four lanes of the thruway in Rochester. Strong winds downed trees and power lines in Clarence.									
Corning, Campbell, Addison in Steuben County; Genoa in Cayuga County; Ovid in Seneca County; Brockport in Monroe County	25	Morning			0	2	4	-	Wind
Strong winds downed trees and power lines in Corning, Campbell and Addison, Steuben Co. In Genoa, Cayuga Co., 2 homes were moved off their foundations. In Ovid, Seneca Co., barns and shacks were flattened. In Brockport, Monroe Co., 2 construction workers atop a roof were swept off their feet. They were hospitalized.									
NEW YORK, Western									
Southern Erie, Chautauqua, Southern Wyoming, Allegany, and Cattaraugus Counties, and parts of Genesee County	28				0	0	0	7	- Frost
Early killing frost decimated corn, beans and other crops. Many were declared Federal disaster areas.									
31 NORTH CAROLINA									
ABERDEEN, MOORE CO.	08	Afternoon			0	1	0	0	Lightning
A woman sustained ear damage when lightning traveled into house on the telephone lines when she was using the telephone.									
BEAUFORT COUNTY	08	1725EST			0	0	0	0	Funnel Cloud
A funnel cloud was sighted briefly just southwest of Washington.									
GOLDSBORO, WAYNE CO.	11	Evening					4	0	Flooding
Damaged estimated at \$34,000. A series of thunderstorms with heavy rains and some damaging winds moved across Wayne County and Goldsboro with total rainfalls from 4 to 7 inches in the Goldsboro area. The heavy rains caused extensive street and creek flooding. High winds damaged roofs to farm buildings in the area.									
ROXBORO, PERSON CO.	17	1250EST			0	0	0	0	Wind, hail
A severe thunderstorm moved through Roxboro with high winds and half inch hail.									
NORLINA, WARREN CO.	17	1300EST			0	0	?	?	Wind, hail
A severe thunderstorm moved east northeast across Warren County to the vicinity of Lake Gaston. Mobile home park in Norlina, a mobile home lost its roof with two others suffering some minor damage. Some trees were uprooted. Large hail damaged tobacco crops between Norlina and Lake Gaston.									
PENDER COUNTY	18	1044EST			0	0	0	0	Waterspouts
Public sighted three waterspouts half mile east of Topsail Beach moving northeast.									
PENDER COUNTY	18	1132EST			0	0	0	0	Waterspouts
Public sighted several waterspouts about 5 miles east of Surf City moving northeast.									
NEW HANOVER COUNTY	23	1317EST			0	0	0	0	Waterspouts
U.S. Coast Guard sighted a waterspout at Wrightsville Beach that touched down briefly on banks channel.									
PEA ISLAND, DARE CO.	25	1700EST	SHORT NARROW		0	0	3	0	Tornado F(0)
A small tornado touched down briefly near the Pea Island Ranger Station on Pea Island on the Outer Banks. The tornado did some minor damage to two buildings.									
32 NORTH DAKOTA									
Taylor (Stark County)	05	2207CST			0	0	0	0	Thunderstorm Winds
Strong thunderstorm winds (measured at 63 mph). No damage reported.									
Underwood (McLean County)	06	0030CST			0	0	4	0	Lightning
A lightning bolt blew a hole in the wall of a house and burned carpeting.									
Grace City (Foster County)	06	Early Morning			0	0	5	0	Lightning
A fire, started by a lightning strike, burned a church to the ground.									
Garrison (McLean County)	06	0400CST			0	0	3	0	Lightning
A fire, started by a lightning strike, damaged the roof of a warehouse.									
Tioga 155W (Williams County)	06	2120CST			0	0	4	7	Thunderstorm Winds
Strong thunderstorm winds and marble-sized hail destroyed gardens, stripped leaves off trees, damaged paint on houses, and wiped out crops in a strip six miles wide and thirty miles long.									
NewTowm (Mountrail County)	06	2215CST			0	0	4	0	Thunderstorm Winds
Strong thunderstorm winds broke tree limbs, blew over fences, and destroyed television antennas.									

STORM DATA AND UNUSUAL WEATHER PHENOMENA

AUGUST 1982

PLACE	DATE	TIME - LOCAL STANDARD	LENGTH OF PATH (MILES)	WIDTH OF PATH (YARDS)	NO. OF PERSONS				ESTIMATED DAMAGE				CHARACTER OF STORM
					KILLED	INURED	PROPERTY	CROPS	KILLED	INURED	PROPERTY	CROPS	
— NORTH DAKOTA													
Stanley 27S (Mountrail County)	06	2230CST			0	8	5	6					Thunderstorm Winds Hail
Strong thunderstorm winds damaged or destroyed about 18 mobile homes and camping trailers, several boats, vehicles, and pontoons. The strong winds also rolled 750-pound hay bales into ditches, and along with 3/4 inch-sized hail severely damaged crops. Eight people were injured (none seriously) by the storm.													
Parshall (Mountrail County)	06	2235CST			0	0	4	6					Thunderstorm Winds Hail
Strong thunderstorm winds (measured at 95 mph) and golfball-sized hail blew down tree branches and wiped out crops.													
Parshall 15S (McLean County)	06	2255CST			0	0	5	5					Thunderstorm Winds Hail
Strong thunderstorm winds and softball-sized hail knocked out windows; damaged home siding and vehicles; and wiped out crops.													
Roseglen (McLean County)	06	2315CST			0	0	5	5					Thunderstorm Winds Hail, Heavy Rain
Strong thunderstorm winds and golfball-sized hail broke windows; battered sidings; shredded gardens; uprooted trees; destroyed crops; knocked over power poles; damaged power poles and vehicles; and wiped out crops. Heavy rains (up to 4 inches) washed out part of a road. A 68-year old farmer was killed about 0800CST on the 7th when his pickup plunged over the sharp edge of the washout.													
Powers Lake 6W (Burke County)	06	2323CST											Funnel
Goodrich (McLean County)	07	Early Morning			0	0	3	0					Lightning
Lightning killed four cows and a calf.													
Ellendale (Dickey County)	07	Early Morning			0	0	3	0					Lightning
A lightning bolt punched small holes in the roof of a house.													
Jamestown (Stutsman County)	12	1320CST			0	1	3	0					Lightning
Lightning struck and injured a golfer, shattered a tree, and damaged a house.													
Minot (Ward County)	14	1854CST			0	0	0	0					Thunderstorm Winds
Strong thunderstorm winds (measured at 71 mph at Minot Airport). No damage was reported.													
Rhame 15S (Bowman County)	16	1940CST			0	0	6	0					Thunderstorm Winds
Strong thunderstorm winds knocked over a 96-foot high oil work-over rig.													
Bowman 10S (Bowman County)	16	1945CST	Short Narrow		0	0	0	0					Tornado (F0)
A tornado touched down briefly. No damage reported.													
Bowman (Bowman County)	16	2001CST			0	0	0	0					Thunderstorm Winds
Strong thunderstorm winds (measured at 70 mph). No damage reported.													
Hettinger (Adams County)	16	2050CST			0	0	0	0					Thunderstorm Winds
Strong thunderstorm winds (measured at 60 mph). No damage reported.													
Max (McLean County)	18	1828CST			0	0	0	5					Hail
Golfball-sized hail severely damaged crops.													
Max 8NE (Ward County)	18	1835CST			0	0	3	5					Hail
Golfball-sized hail broke out windows, riddled the siding on a house, and damaged crops.													
Roseglen (McLean County)	18	1840CST			0	0	0	5					Hail
Walnut and half dollar-sized hail severely damaged crops.													
Halliday (Dunn County)	18	1956CST			0	0	0	0					Hail
Golfball-sized hail. No damage reported.													
Hebron (Morton County)	18	2230CST			0	0	4	0					Lightning
Lightning cracked the ceiling in a house and damaged television sets, a microwave oven, and an air conditioner.													
McClusky (Sheridan County)	19	0510CST			0	0	4	5					Hail
Golfball-sized hail destroyed crops, knocked out windows, and ripped steel siding off a farm house.													
Valley City 20N (Barnes County)	21	1400CST			0	0	3	0					Thunderstorm Winds
Strong thunderstorm winds blew siding off a house.													
— NORTH DAKOTA													
Leonard 4E (Cass County)	21	1605CST			0	0	0	5					Hail
One inch-sized hail severely damaged crops.													
Kindred (Cass County)	21	1615CST			0	0	0	5					Hail
Quarter-sized hail damaged crops.													
McHenry (Foster County)	21	1700CST			0	0	3	5					Hail
Golfball-sized hail damaged crops and gardens; and knocked out windows.													
Binford (Griggs County)	21	1730CST			0	0	0	4					Hail
Tennis ball-sized hail damaged crops.													
Wheatland (Cass County)	21	1845CST			0	0	0	0					Hail
Hail 3/4 inch in diameter. No damage reported.													
Beach 9NE (Golden Valley County)	22	1723CST			0	0	3	5					Hail
One inch-sized hail broke house windows, cracked windshields on vehicles and severely damaged crops.													
Beulah 15N (Mercer County)	23	1415CST											Funnel
Northcentral Northeast and East Central	27	Morning			0	0	0	6					Frost
An early frost (temperatures dropped to 22 degrees at Towner in McHenry County and 25 degrees at LaMoure in LaMoure County) damaged gardens and crops.													
Golva (Golden Valley County)	29	0630CST			0	0	5	3					Hail
Hen egg-sized hail destroyed crops and gardens; and knocked out windows in buildings.													
Almont 1S (Morton County)	30	0730CST			0	0	4	0					Lightning
Lightning struck and burned a house to the ground.													
33 OHIO													
Martins Ferry, Belmont County	07	1700 EST	-	-	0	0	4	0					High Wind
A thunderstorm with damaging winds downed trees and lines and damaged several buildings in the Martins Ferry and Shadyside areas.													
Bellefontaine, Logan County	24	1715 EST	-	-	0	2	5	0					High Wind
Thunderstorm winds toppled several farm buildings and downed trees. Two people were slightly injured and 35 to 40 hogs were killed or injured.													
Preble County	24	1821 EST	-	-	0	0	4	0					High Wind
Thunderstorm crossed the county with widespread tree and utility line damage.													
Montgomery County	24	1840 EST	-	-	0	0	5	0					High Wind, Lightning, Heavy Rain
Thunderstorm did considerable damage in the Dayton area. Several lightning strikes started fires and buildings were damaged by high winds. Trees and utility lines were also downed. Over 1 1/2 inches of rain fell in less than an hour as the storm passed through. Urban drainage flooding occurred in many areas.													
Clark and Greene Counties	1925 - 24	1940 EST	-	-	0	15	5	0					Lightning High Wind
Thunderstorm with frequent lightning strikes and damaging winds moved through these counties. Wind damage was especially heavy in Xenia where 15 people sustained minor injuries and 20 people were left homeless.													
Circleville, Pickaway County	24	2025 EST	-	-	0	0	4	0					High Wind
Thunderstorm winds did roof damage to several homes and downed trees and utility lines.													
Ross County	24	2040 EST	3.5	50	0	5	6	0					Tornado (F1)
A tornado set down north of Chillicothe along State Route 23 west of Kingston. The storm leveled 6 homes and damaged 6 others. Also, 3 mobile homes were overturned. Over \$1 million in property damage was reported. Five people received minor injuries.													

STORM DATA AND UNUSUAL WEATHER PHENOMENA

AUGUST 1982

PLACE	DATE	TIME - LOCAL STANDARD	LENGTH OF PATH (MILES)	WIDTH OF PATH (YARDS)	NO. OF PERSONS		ESTIMATED DAMAGE		CHARACTER OF STORM
					KILLED	INJURED	PROPERTY	CROPS	

PLACE	DATE	TIME - LOCAL STANDARD	LENGTH OF PATH (MILES)	WIDTH OF PATH (YARDS)	NO. OF PERSONS		ESTIMATED DAMAGE		CHARACTER OF STORM
					KILLED	INJURED	PROPERTY	CROPS	

34 OKLAHOMA

Cherokee, Alfalfa County	05	1630CST			0	0	?	?	Wind
		Wind 50-60 MPH.							
Ponca City, Kay County	05	1815CST			0	0	?	?	Wind
		Wind 50-60 MPH.							
Arkansas River, Pawnee County	07	afternoon			1	1	?	?	Lightning
		A group of Boy Scouts were canoeing from Ponca City to Keystone Lake. Near Cleveland one 13 year old boy was killed and a second boy was injured by lightning.							
Pontotoc County	10	0600CST			0	0	?	?	Lightning
		Lightning started a fire in an oil tank east of Ada.							
Texhoma, Texas County	15	1700CST	?	?	0	0	?	?	Tornado (F1) and Wind
		A small tornado and 90 MPH winds caused considerable damage in Texhoma. Damage estimates were \$200,000 to \$300,000.							
Fryor, Mayes County	27	0530CST			0	1	?	?	Lightning and Wind
		Two house fires were started by lightning. One man was hospitalized because of burns. Wind caused damage to trees and power lines.							
Apache, Caddo County	27	1500CST			0	0	?	?	Lightning
		Fire started by lightning destroyed a stone facade house 3.5 miles west of Apache.							
Lawton, Comanche County	27	1500CST			0	0	5	?	Lightning
		Fire Started by lightning destroyed a house 11 miles east of Lawton. Damages were estimated near \$110,000.							
Carnegie, Caddo County	27	1500CST			0	0	?	?	Lightning
		Lightning started a fire which destroyed about 60 acres of grass.							
Sand Springs, Tulsa County	27	1500CST			0	1	?	?	Wind
		One woman was injured when she was struck by a portable building that was blown by strong straight winds. She underwent surgery for internal injuries. Damages to trees, power lines, and signs were also scattered through the town.							
Anadarko, Caddo County	27	1512CST			0	0	?	?	Wind
		Wind 50 MPH.							
Stella, Cleveland County	27	1515CST			0	0	?	?	Hail
		One inch hail.							
Ft. Cobb, Caddo County	27	1519CST			0	0	?	?	Wind
		High winds blew the roof off a barn.							
Tulsa, Tulsa County	27	1530CST			0	0	?	?	Wind
		Wind up to 80 MPH caused considerable damage, including damage to two airplanes.							
Mannford, Creek County	27	afternoon			0	0	?	?	Wind
		Wind 60-70 MPH caused considerable damage.							
Purcell, McClain County	27	1600CST	1.0	50	0	0	?	?	Tornado (F2)
		A small tornado unroofed a barn 5 miles north of Purcell. The roof was blown onto another building. There was minor damage to other areas of the farm.							
Wagoner, Wagoner County	27	1630CST	1.0	50	0	2	?	?	Tornado (F2)
		A small tornado destroyed a trailer house and two barns. Two people in the trailer house received minor injuries, one required four stitches in her hand.							
Cache, Comanche County	27	1700CST			0	0	?	?	Wind
		Wind 50 MPH.							
Cromwell, Seminole County	27	1730CST			0	0	?	?	Lightning
		Lightning killed seven head of cattle and started a grass fire.							
Duncan, Stephens County	27	1750CST			0	0	?	?	Hail
		Marble to golfball size hail in the southside of Duncan.							

OKLAHOMA

McAlester, Pittsburg County	27	1813CST			0	0	?	?	Wind
		Wind 35-50 MPH caused minor damages.							
Haud, Seminole County	27	1910CST			0	0	0	0	Funnel Cloud
Saskaw, Seminole County	27	1930CST			0	0	?	?	Funnel Cloud and Wind (50-60MPH)
Westville, Adair County	27	evening			0	0	?	?	Lightning
		Lightning killed four calves.							

35 OREGON

Douglas County	7,8,	PM			0	0			Thunderstorms
Lane "	9								
Benton County									A series of thunderstorms described as worst of Fire Weather season destroyed over 1200 acres of timber and brush.
Deschutes County	9	1000PST			?	0	0	?	5 Heavy hail, winds
		Heavy hailstorm. Hail up to 1 inch in size. Winds 40-50 MPH with heavy hail and rain destroyed about 1500 acres of crops.							
Umatilla County	9	1500PST			0	0	?	?	Severe thunderstorm and high winds.
		Severe thunderstorm with estimated wind 100 MPH caused power outages and many acres of crop damage southeast of Milton-Freewater. A tornado was reported in County of Walla Walla, Washington.							

36 PENNSYLVANIA, Eastern

Derry Township, Dauphin County	02	1630 to 1900EST			0	0	4	0	Heavy Rain
		Heavy downpours with thunderstorms caused flash flooding and soil washouts. Roads were flooded and at least one section had to be closed. A large amount of mud was washed out of a farm field, covered yards and basement floors of adjacent homes. Some of the yards had gullies cut in them by the rushing water. Gusty winds also downed some trees in Hummelstown. Between 7 and 8 PM some trees were also downed further to the east in Bethlehem.							
Lower Montgomery County	04	1400 to 1500EST			0	0	3	0	Wind, Heavy Rain
		Wind gusts accompanying thunderstorms moved through Cheltenham, Abington and Jenkintown downing trees and tree limbs. The falling trees brought down utility lines, blocked streets and damaged at least one house. A camper top blew off a pickup truck and damaged three automobiles that it hit. Heavy rain caused some small streams to flood and at least one road had to be closed.							
Pine Grove Township, Schuylkill County	08	1530 to 1800EST			0	0	5	0	Heavy Rain
		Heavy downpours with as much as 4 inches in 45 minutes caused flash flooding, the worst of which was in the town of Pine Grove. Total rainfall was measured at 6.91 inches in Pine Grove. Flood waters covered all roads with water 4 feet deep in spots. The rushing water caused washouts on many roads and took some paving off most roads. Water rushing around buildings caused deep gullies up to 6 feet deep. Factories, businesses, and many homes were flooded. Some homes had their basements full and water flooding the first floor. The damage from flooding also hit churches, restaurants and apartments.							
Wayne Township, Schuylkill County	08	1700EST			0	0	5	0	Electrical
		Lightning struck a large stone home near Summit Station and the resulting fire caused considerable damage.							

STORM DATA AND UNUSUAL WEATHER PHENOMENA

AUGUST 1982

PLACE	DATE	TIME - LOCAL STANDARD	LENGTH OF PATH (MILES)	WIDTH OF PATH (YARDS)	NO. OF PERSONS				ESTIMATED ¹ DAMAGE		CHARACTER OF STORM
					KILLED	INJURED	PROPERTY	CROPS	PROPERTY	CROPS	
35 PENNSYLVANIA, Eastern											
Lehigh and Northampton Counties	08 09	1900 to 0500EST			1	0	6	0			Heavy Rain
	<p>Thunderstorm downpours brought record rainfall to Allentown. At the ABE Airport 5.7 inches fell in 24 hours to set a new record. The 2.78 in one hour, 3.68 in two hours and 4.19 in three hours also set new records. By the time the rain ended completely on the evening of the 9th, 6.35 inches had fallen in 26 hours. The heaviest rainfall was from central Lehigh County to the Allentown-Bethlehem area. There was widespread drainage flooding throughout the area with roadway flooding and many buildings flooded. Roadways were flooded with 4 feet or more of water causing many roads to be closed. In Bethlehem alone, half a dozen people had to be rescued from their stalled cars, many forced onto the roof by rising water. The water rushing over the roads caused washouts and cracked, buckled or washed away paving in many areas. One 18 year old was drowned when he was swept away in a drainage ditch while trying to cross a flooded street. Flooding caused extensive damage to businesses with much damage in Allentown and Whitehall and south Whitehall Townships. In Allentown about 200 homes were flooded. In Bethlehem overtaxed storm sewers backed up like Geysers through manholes and in some cases threw the covers as much as three feet in the air. The Jordan Creek in Lehigh County hit a new record crest as it went over the top of the 15-foot staff gage. A lightning fire badly damaged a barn just outside of Hellertown.</p>										
Chester County	17	1630 to 1800EST			1	1	3	0			Wind, Electrical
	<p>Damage from thunderstorm wind gusts was mostly in the West Chester area. Trees and limbs were downed, blocking roads and badly damaging an automobile. Near Glenmoore, two people were hit by a lightning strike. The one received only minor injuries, but the other was seriously stricken. Although rescue efforts kept him alive at the time, he died several days later in the hospital. Wind damage was also reported around 2 to 3 PM in the Milton area of Northumberland Cty.</p>										
Leacock Township Lancaster County	23	2030 to 2100EST			0	0	5	0			Wind
	<p>Very high wind gusts hit the area near Paradise and Intercourse. On one farm, a tobacco shed was demolished and a barn was severely damaged. Windows were shattered in the house, the roof was splintered and a metal windmill was twisted and bent over to the ground. Five trees were uprooted and some cattle were injured. On another farm, a huge chicken barn was severely damaged, a heifer barn collapsed and the house roof and attic sustained wind and water damage. Fourteen heifers and numerous chickens were killed. On another farm, a barn collapsed and the roof was blown off the house. At a residence in Intercourse, part of the house roof collapsed and a car in a garage sustained wind and water damage. In Intercourse, dozens of 500-pound tombstones were blown over.</p>										
36 PENNSYLVANIA, Western											
Westmoreland County	17	afternoon	0	0	0	1	0	0			Lightning
	<p>A Latrobe area woman was struck by lightning at her farm. She was admitted to the area hospital in fair condition.</p>										
37 RHODE ISLAND ————— NO REPORT RECEIVED											
38 SOUTH CAROLINA											
Elliott Area, Lee Cty	2	1930 EST	-	-	0	0	3	0			Electrical, Wind
Sumter Area, Sumter County	2	2000 EST	-	-	0	0	3	0			Electrical, Wind
Summerton Area, Clarendon County	2	2100 EST	-	-	0	0	4	2			Electrical, Wind
	<p>An area of thunderstorms moved across Lee, Sumter and Clarendon Counties. Strong winds blew limbs and trees on power lines; also lightning damaged transformers disrupting electrical service. Localized damage occurred near Elliott and in the Sumter area, with the most extensive damage and power disruptions in the Summerton area south of Sumter. A steeple was blown off a church south of Sumter.</p>										
North Augusta, Aiken County	4	0900 EST	-	-	0	0	5	0			Electrical
	<p>Lightning burned large home during heavy thunderstorm</p>										
South of Hilton Head, Beaufort County	5	PM	-	-	0	0	2	2			Hail
	<p>Golf ball size hail during thunderstorm caused minor damage.</p>										
New Ellenton, Aiken County	8	1830 EST	-	-	1	0	0	0			Electrical
	<p>Lightning hit tree and jumped to man walking road nearby killing him.</p>										
6 mi. west of Bishopville, Lee Cty.	9	1525 EST	-	-	0	0	3	0			Wind, Electrical
	<p>Heavy thunderstorm winds felled seven large trees, destroyed shed and did other minor damage over a small area.</p>										
Lockhart, Union Cty.	12	2045 EST	-	-	0	2	4	0			Wind, Electrical
	<p>Wind, small hail and heavy rains caused considerable damage to utilities, mostly from felled trees. Two occupants of a car were injured when their car was crushed by a falling tree.</p>										
Isle of Palms, Charleston County	28	1530 EST	-	-	1	0	0	0			Electrical
	<p>Lightning struck lady on beach. She died several hours later from injuries received.</p>										
39 SOUTH DAKOTA											
Minnehaha County	3	1615CST	-	-	1	1	0	0			Lightning
	<p>A fourteen year old boy was killed by lightning as he batted apples out of a tree during a thunderstorm. He suffered a direct hit by lightning in his hip. A fifteen year old boy with him was seriously injured.</p>										
Moody County	3	Afternoon	-	-	0	0	3	0			Lightning
	<p>Lightning damaged a transformer in Flandreau, knocking out power in most of the city for an hour.</p>										
Union County	3	1930CST	-	-	0	0	4	3			High Winds
	<p>70 mph winds did considerable damage to a farm located between Jefferson and McCook Lake. A two-story cattle barn was demolished. The roof of another barn was blown off. A 300-gallon gasoline tank (half-full of gasoline) was overturned spilling the contents. A tree limb punched a hole in a garage. Windows were broken and a few shingles were lost on the house.</p>										
Minnehaha County	3	2005CST	-	-	0	0	3	0			Lightning
	<p>Lightning followed the electrical wiring into the wall of a Baltic home, blew out the wall and destroyed a television set.</p>										
Minnehaha County	4	0215-0220CST	short narrow		0	0	0	0			Tornado (F0)
	<p>Tornado sighted by Weather Service personnel four miles east of Renner. Tornado was on the ground five minutes.</p>										
Minnehaha County	4	0400CST	-	-	0	0	3	4			Heavy Rain Flooding
	<p>A six-inch rainfall over northern Minnehaha County forced Slip-Up Creek to overflow its banks. Crops were severely damaged, pastures littered, fences torn and some livestock drowned in the Garretson area. Water was nine feet deep in Corson. Roads were washed out between Baltic and Dell Rapids.</p>										
Haakon County	4	2020CST	-	-	0	0	0	0			High Winds
	<p>50 mph wind gusts were reported at Philip during a thunderstorm.</p>										
Pennington County	4	Late Afternoon	-	-	0	0	?	?			Heavy Rain
	<p>2.6 inches of rain fell in a one-hour period causing minor flooding in the Robinsdale area in Rapid City. Numerous motorists were forced to abandon their cars in low-lying intersections where water was as high as car bumpers.</p>										

STORM DATA AND UNUSUAL WEATHER PHENOMENA

AUGUST 1982

PLACE	DATE	TIME - LOCAL STANDARD	LENGTH OF PATH (MILES)	WIDTH OF PATH (YARDS)	NO. OF PERSONS		ESTIMATED DAMAGE		CHARACTER OF STORM
					KILLED	INJURED	PROPERTY	CROPS	

PLACE	DATE	TIME - LOCAL STANDARD	LENGTH OF PATH (MILES)	WIDTH OF PATH (YARDS)	NO. OF PERSONS		ESTIMATED DAMAGE		CHARACTER OF STORM
					KILLED	INJURED	PROPERTY	CROPS	

— SOUTH DAKOTA

Dewey County	14	Early Morning	-	-	0	0	3	0	High Winds
A shed was damaged by a falling tree toppled by high winds at a Glencross farm. At another farm near Glencross, wind lifted the roof from a lean-to on the barn and blew sheets of corrugated steel into a ditch across the road.									
Meade County	16	2200-2300CST	-	-	0	0	3	0	High Winds
60-70 mph winds overturned a camper at Faith. A chimney was broken off a house. Tree damage was widespread throughout Faith.									
McCook County	19	1640CST	?	3*	0	0	3	5	Hail
Golfball size hail fell west of Salem. 100% damage was done to cornfields, soybeans and alfalfa.									
Miner County	19	Evening	-	-	0	0	2	5	Lightning Hail, High Winds
Lightning knocked out power in Carthage. Gusting winds did considerable tree damage; huge bales of hay were strewn across the fields. Heavy damage was sustained to crops from just south of Carthage to the Vilas and Howard area. Windows were broken. Corn and sunflower crops south of Carthage to Argonne received the heaviest damage.									
McCook County	20	1640CST	-	-	0	0	2	0	Hail
Hail, one inch in diameter, fell two miles west of Salem. Some windows were broken and small tree limbs were downed.									
Todd County	21	1030CST	-	-	0	0	2	0	High Winds
High winds caused several trees to be uprooted. Minor shingle and roof damage was reported in Rosebud. A 2 x 4 slab of lumber pierced a camper.									
Hughes County	21	1850CST	-	-	0	0	0	0	High Wind, Hail
60 mph winds and hail, one inch in diameter, were recorded north-east of Harrold.									
Tripp County	21	1940CST	short narrow		0	0	0	0	Tornado (F0)
Civil Defense reported that a tornado touched down in an open field four miles northwest of Winner.									
Dewey County	22	Afternoon	-	-	0	0	0	4	Lightning
Lightning set off two grass fires that destroyed 80 acres on farms northwest of Glad Valley									
Harding County	23	1840CST	-	-	0	0	0	0	High Winds
66 mph winds at Redig									
Lawrence County	23	1900-1930CST	-	-	0	1	4	?	Hail, High Winds
Hail, 2 3/4 inches in diameter, was reported ten miles north of Whitewood. Damage was severe. Trees were shredded, power poles toppled, pastures reduced to rubble and windows smashed. Vehicles sustained heavy damage, denting the exterior and breaking windshields. A girl was injured while riding a horse in the storm. Hail blackened one eye and caused multiple bruises. Skylights were knocked out of barns, house siding was cracked and tin siding was pierced. A large barn was leveled.									
Butte County	23	1930CST	-	-	0	0	4	5	Hail
Hail, 2 3/4 inches in diameter, fell at Belle Fourche. 75% loss was sustained to the corn crop. Fruit trees were bared. A trailer unit was damaged along with a pickup and some crane equipment one and one-half miles north of Fruitdale. Shingles were splintered and windows broken out. Gardens were destroyed. Vehicle damage was extensive.									
Fall River County	23	1930CST	-	-	0	0	0	0	Funnel Cloud
A funnel cloud was sighted north of Edgemont.									
Fall River County	23	1938CST	-	-	0	0	6	3	Hail
Hail, 2 3/4 inches in diameter, fell in Edgemont. Damage was extreme. Windows were broken throughout the city. Police cars and privately owned vehicles were extensively damaged. Considerable damage was done to steel buildings. Hail ripped through screens, chipped siding and destroyed gardens. The roof of a steel building was destroyed and a pickup truck inside the building was damaged.									
Fall River County	23	1938CST	short narrow		0	0	0	0	Tornado (F0)
Tornado was sighted eight miles north of Edgemont.									
Pennington County	23	1951CST	-	-	0	0	0	0	Funnel Cloud
Funnel cloud sighted north of Rapid City.									

— SOUTH DAKOTA

Lawrence County	23	1951CST	-	-	0	0	3	2	Hail
Hail, two inches in diameter, fell at Deadwood.									
Lyman County	23	2000CST	-	-	0	0	3	4	Hail, High Winds
Hail, high winds and heavy rain destroyed gardens, damaged siding and paint, broke windows and stripped trees at Presho. The milo crop suffered extensive damage.									
Lawrence County	23	2004CST	-	-	0	0	0	0	Funnel Cloud
A funnel cloud was sighted one mile east of Piedmont.									
Fall River County	23	2007CST	-	-	0	0	3	?	Hail
Hail, two inches in diameter, fell at Edgemont denting and punching holes in roofs and breaking windows.									
Pennington County	23	2010CST	-	-	0	0	0	0	Funnel Cloud
A funnel cloud was sighted three miles north of Interstate 90 between Rapid City and Ellsworth Air Force Base.									
Lawrence County	23	2011CST	-	-	0	0	0	0	Funnel Cloud
A funnel cloud was sighted at Nemo Road, west of Rapid City.									
Pennington County	23	2014CST	-	-	0	0	2	0	Hail
Hail, three-quarters inch in diameter, fell at New Underwood.									
Pennington County	23	2021CST	-	-	0	0	0	0	Funnel Cloud
Funnel cloud sighted north of Ashland Heights between Rapid City and Ellsworth AFB.									
Jackson County	23	2155MST	short narrow		0	0	0	0	Tornado (F0)
Tornado along Interstate 90, ten miles east of Kadoka.									
Bennett County	23	2200CST	short narrow		0	0	0	0	Tornado (F0)
Tornado near Martin on the ground for seven minutes in an open field.									
Hutchinson County	23	Night	-	-	0	0	4	0	High Winds
A barn structure, 40' x 212', collapsed under high winds one-quarter mile north of Parkston.									
Tripp County	24	Early Morning	-	-	0	0	?	?	High Wind, Hail
Strong thunderstorm winds estimated to near 100 mph and marble size or larger hail destroyed milo and corn crops near Hamill. Bales of hay were blown away.									
Douglas County	24	0045CST	-	-	0	0	3	0	High Winds
Strong thunderstorm winds snapped trees in several parts of the county. The trees fell onto power lines resulting in power outages. Hardest hit was the Armour, Delmont and Corsica areas. Snapped power lines caused a fire near Corsica.									
Todd County	24	Late Morning	-	-	0	0	4	0	High Winds Funnel Cloud
Strong thunderstorm winds tore shingles off roofs and damaged several trees and antennae in Antelope. A few windows were broken. A funnel cloud was sighted over Mission.									
Meade County	24	Night	-	-	0	0	2	0	High Winds
Strong thunderstorm winds destroyed a small camper-trailer and snapped limbs off trees in Faith.									
Beadle County	29	0130CST	5*	1*	0	0	0	3	Hail
Golfball size hail swept through the Bonifilla area causing extensive damage to several cornfields and shattering trees and branches.									
Walworth County	29	Early Morning	-	-	0	0	0	3	Lightning
Lightning struck a stack of alfalfa resulting in a total loss.									
Miner County	29	Early Morning	-	-	0	0	2	3	Lightning
Lightning ignited a pile of hay bales west of Carthage. A cow was also struck and killed at the same location.									
Dewey County	29	Early Morning	-	-	0	0	0	4	Lightning
150 tons of hay burned after lightning struck a hayfield about seven miles northwest of Timber Lake.									

STORM DATA AND UNUSUAL WEATHER PHENOMENA

AUGUST 1982

PLACE	DATE	TIME - LOCAL STANDARD	LENGTH OF PATH (MILES)	WIDTH OF PATH (YARDS)	NO. OF PERSONS		ESTIMATED DAMAGE		CHARACTER OF STORM
					KILLED	INJURED	PROPERTY	CROPS	
— SOUTH DAKOTA									
Brookings County	29	0930CST	-	-	0	0	2	0	Lightning
									Lightning entered the home of an Elkton resident shattering a CB antennae, destroyed the television and caused considerable electrical problems in the home.
Tripp County	30	1838CST	-	-	0	0	3	0	Funnel Cloud Hail
									Funnel cloud reported five miles west of Winner. Large hail did considerable damage to vehicles. Hail also damaged a light airplane.
Tripp County	30	1927CST	-	-	0	0	?	0	Hail
									Golfball size hail at Witten.
Kingsbury County	31	0000CST	-	-	0	0	3	0	High Winds
									Wind destroyed a grain storage bin and gas pumps at Waillum's Corner in Manchester.
Minnehaha County	31	0248CST	-	-	0	0	0	?	High Winds
									Very heavy rain and 65 mph winds were reported at Wall Lake, ten miles west of Sioux Falls.
Minnehaha County	31	0254CST	-	-	0	0	3	0	High Winds
									Very heavy rain and 62 mph winds at Sioux Falls NWS. Some damage to trees in the south and east areas of Sioux Falls. Minor drainage problems occurred in lowlying areas.
Butte County	31	1605CST	-	-	0	0	3	0	High Winds Heavy Rain
									Very heavy rain and 70 mph winds reported at Belle Fourche. A cinder block wall, 80 foot long, under construction was demolished just west of Belle Fourche.
Hand County	31	1630CST	-	-	0	0	4	3	Hail, High Winds
									High winds to 65 mph and baseball size hail were reported in the Polo area. Several windows in houses and vehicles were broken. Hail knocked holes in the roofs of several buildings. Siding was badly damaged and shingles were blown off roofs. Crops were damaged and trees uprooted.
Butte County	31	1645CST	-	-	0	0	4	0	High Winds
									40-80 mph winds roared through Nisland uprooting trees, downing power lines. Electric poles were twisted. Three twelve-foot pieces of tin roof were blown off a farm building. A tall cement block silo was totally demolished.
Beadle County	31	1735CST	-	-	0	0	3	0	Hail
									Golfball size hail at Bonilla. Considerable vehicle damage.
Beadle County	31	1757- 1800CST	-	-	0	0	3	?	Hail High Winds
									52 mph winds at Huron Airport. Hail, 2-2½ inches in diameter, fell at the Huron State Fairgrounds cancelling the scheduled stage show. Hail, 2 inches in diameter, also fell in the city of Huron.
Mellette County	31	1928CST	-	-	0	0	?	?	Hail
									Hail, one and three-quarters inch in diameter, fell over western Mellette County.
Lake County	31	1930CST	short narrow		0	0	4	3	Tornado (F1)
									Three buildings were destroyed as a tornado briefly touched down on a farm one mile southwest of Winfred.
Minnehaha County	31	2008CST	-	-	0	0	0	0	High Winds
									50 mph winds and heavy rains were reported one mile north of Buffalo Ridge.
Minnehaha County	31	2015CST	-	-	0	0	4	2	High Winds
									80 mph winds at Lyons caused considerable damage to trees and power lines. A partially completed addition to the Firehall was blown down. Basements flooded after 3.91 inches of rain fell. Several small fires were started by downed power lines.
Minnehaha County	31	2040CST	-	-	0	0	0	0	Heavy Rain
									Water was up to the car doors in Colton.
Minnehaha County	31	2054CST	-	-	0	0	0	0	High Winds Heavy Rain
									60-80 mph winds and extremely heavy rain from Hartford to Crooks.
— SOUTH DAKOTA									
Minnehaha County	31	2102CST	-	-	0	0	3	0	High Winds
									74 mph winds at NWS Office in Sioux Falls. Telephone service knocked out to 320 residents. Power lines downed. Some tree damage with large broken branches.
Minnehaha County	31	2105CST	-	-	0	0	0	0	Funnel Cloud
									Funnel cloud, five miles north of Sioux Falls, over Interstate 29. Another funnel was sighted over southeastern Sioux Falls.
Minnehaha County	31	2115CST	-	-	0	0	0	0	Hail
									Hail, three quarters inch in diameter, was reported in Sioux Falls.
Clay County	31	2226CST	-	-	0	0	2	0	High Winds
									75 mph winds and small hail were reported fifteen miles north of Vermillion.
Lincoln County	31	2230CST	-	-	0	0	0	0	High Winds
									60 mph winds and very heavy rain at Beresford.
Minnehaha County	31	2230CST	-	-	0	0	3	2	Heavy Rain
									2.67 inches of rain fell at Foss Field in Sioux Falls. Heavy rain at Hartford left water standing one foot deep. Some flooding of agricultural land occurred along small streams leading to Skunk Creek and along lowlands.
40 TENNESSEE									
North-Central Tennessee	16	0100-1200CST	(See individual counties)						Flash flooding
									Heavy rains moved into and developed over North-Central Tennessee during the early morning hours of the 16th. Flash flooding spread over many counties, and damage/fatalities are described on a county-by-county basis. A 500 mb ridge was stationary over the Great Plains near 100 degree west longitude. A short wave trough most clearly evident at 700 mb moved slowly across Tennessee. A weak pressure gradient was analyzed at the surface, but an inverted trough moved through the weak pattern during the next two days. Ample moisture was available in the low levels with surface dew points in the mid 70s over Tennessee. Upper levels were also moist with dew point spreads less than 5 degrees.
Bedford County	16						5		Flash flooding
									Four houses and one business were flooded in Shelbyville where 2.72 inches of rain were recorded. Most of the damage occurred to roads and bridges.
Cannon County	16						4		Heavy rains
									About \$25,000 damage occurred to roads and bridges in heavy rains.
Clay County	16						4		Heavy rains
									About \$25,000 damage occurred to roads and bridges in heavy rains.
Dekalb County	16						6	5	Flash flooding
									Two hundred workers were evacuated from the Alexandria Garment Factory in Alexandria when water rose into the plant. Five mobile homes were flooded in the Mud Flat Community. Thirty-five cars were damaged or destroyed in the parking lot of Alexandria Garment Factory. One business and two homes were also flooded.
Jackson County	16						6	4	Flash flooding
									The hardest hit areas of the county were in the area from Flynn's Lick to Granville and from Highland and Bladice communities to the Smith County line. Flynn's Creek flooded with extensive damage to tobacco and hay crops. A number of bridges (mostly private) were affected.
Macon County	16						6	6	Flash flooding
									Flash flooding caused extensive damage to roads and bridges with additional heavy damage to agricultural crops.
Smith County	16						2	6	Flash flooding
									Two elderly women were killed when the house they were in was swept from its foundation by waters from Peyton's Creek in Pleasant Shade. The women were drowned around 7:00 a.m. CST. Boston Branch runs into Peyton's Creek in Pleasant Shade, and both flooded with the heavy rains. Rainfall in Pleasant Shade was estimated at 11 to 12 inches. Twenty homes and businesses were damaged or destroyed by the flooding in Pleasant Shade which is 10 miles north of Carthage. In addition to Pleasant Shade, 4 houses were flooded in Sykes, 4 in Carthage, 2 in New Middleton, and 6 in Elmwood.

STORM DATA AND UNUSUAL WEATHER PHENOMENA

AUGUST 1982

PLACE	DATE	TIME - LOCAL STANDARD	LENGTH OF PATH (MILES)	WIDTH OF PATH (YARDS)	NO. OF PERSONS		ESTIMATED ¹ DAMAGE		CHARACTER OF STORM
					KILLED	INJURED	PROPERTY	CROPS	
— TENNESSEE									
Trousdale County	16				5	5			Flash flooding
Goose Creek and Dixon Creek each flooded. Goose Creek caused mostly agricultural damage, but Dixon Creek runs through Cato where a number of structures were damaged. The east side of the county suffered the worst damage. Rainfall at Cato was 10 inches in 8 hours.									
Wilson County	16				5	4			Flash flooding, heavy rains
Watertown reported some flood damage. Roads and bridges suffered damage from the heavy rains and flooding.									
Southeast Tennessee	17	0030-1000CST							Flash flooding
The rains from the 16th subsided during the day of the 16th, but heavy rains redeveloped during the early morning of the 17th. The thunderstorms developed in response to an upper level disturbance moving slowly across the state. The thunderstorms formed along the southern portion of the Cumberland Plateau in a north-south orientation and moved south-southeast. The heavy rains which resulted were caused by a combination of abundant moisture, slow movement, and movement of thunderstorms over the same area.									
Hamilton County	17				1	1	6	6	Flash flooding
Flash flooding in Hamilton County occurred in two primary locations, Northern Hamilton County around Soddy-Daisy and in southwestern Hamilton County around Tiftonia. Soddy-Daisy Area: Bridge over US 27 was washed out around 4 a.m. CST with one injury occurring as a couple of cars were washed off the bridge. The bridge ran over North Chickamauga Creek and other flooding occurred along this same creek in Soddy. Twelve homes and 15 mobile homes were damaged by the flooding in Soddy. Rainfall amounts reported in the Soddy area included: 9.67" between Soddy and Daily, 9.50" east of Nowbray (southwest of Soddy), and 8.00" in Sale Creek. In Tiftonia, rainfall amounts were measured at 4.70 inches. Four mobile homes and 10 cars were reported destroyed or damaged. Evacuations in some sections of Tiftonia began around 3 a.m. CST. A Chattanooga Police car was swapped by water on the west side of Chattanooga, and the police officer had to swim and wade out of trouble. County-wide, Civil Defense officials reported damage or loss to 85 homes, 49 mobile homes and 23 businesses.									
Marion County	17				3	6	5		Flash flooding
Three people were killed when the car they were in was washed off of Highway 134 by raging waters from Running Water Creek. The three people, ages 42, 19, and 4, left their home in the Whiteside area to go to the home of a relative about one mile away. While their home was flooded, it was not destroyed by the flood waters. Suck Creek had some of the worst flooding in the area. A bridge across Suck Creek was washed out stranding 150 families for at least one full day. US Highway 41 was washed out in several places and mud slides forced closing of the road for sometime. One store on Highway 41 was destroyed by a mud/rock slide caused by the heavy rains. Jasper had 4.5 inches of rain, but the Sheriff's Department estimated 7 inches of rain in two hours. Total rainfall in the Whiteside/Suck Creek area near Raccoon Mountain probably exceeded 8 inches.									
Meigs County	17				5	5			Flash flooding, heavy rains
Damage was confined to roads and bridges and crops.									
Putnam County	17					5			Heavy rains
Damage was estimated at \$100,000 to roads and bridges.									
Rhea County	17				5	4			Flash flooding
Twenty people were evacuated when flooding occurred. Water was reported five feet deep in Morgan's Trailer Park. Businesses were damaged in the Dayton Shopping Center, and the Dayton Products Company suffered \$500,000 damage.									
Knoxville, Knox County	17	1900CST				5			Flash flooding
Twenty residences were flooded during heavy rains along First Creek. Second Creek running through the World's Fair site also came out of its banks. Several roads were closed stranding motorists. Water was reported 3 feet deep at West Fifth Avenue near Interstate 40 and 4 feet deep on Ray Mears Blvd. near West Blvd. Rainfall around town varied from 2.03" in downtown Knoxville to 3.75" in the Fountain City area.									
5 Miles West of Paris, Henry County	30	1830CST				?	?		High wind
High wind uprooted trees and downed power lines. A part of a barn roof was destroyed on one farm.									
Monterey, Putnam County	30	Afternoon				4	?		Flash flooding
Monterey got 5.1 inches of rain while Cookeville reported just over three inches (3.09"). In and around Monterey, two bridges were washed out, one in the Smith Chapel Community on Hill Creek. Basements were flooded and traffic was detoured due to the flooding in low areas and damage to rural roads. Power was also out in many areas.									
Pleasant Shade, Smith County	30	Evening				?	?		Flash flooding
About 4.5 inches of rain caused Boston Branch and Peyton's Creek to overflow their banks again (See August 16, 1982). A pickup truck and a bridge were washed away by this new flooding.									
— TENNESSEE									
Montgomery County	31	Morning				?	?		Flash flooding
Highway 41-A North was covered by up to 5 feet of water. This caused traffic problems since this is the main route between Clarksville and Ft. Campbell. One family was evacuated from their home when the foundation was undermined by flood waters.									
Jackson County	31	Morning				6	?		Flash flooding
Roads were closed and damaged as heavy rains once again hit the area. Bridges were washed out on Indian and Bullet Creeks with extensive damage to many secondary roads. Highway 135 was closed from Gainsboro to Cookeville due to flooding.									
Land-Between-The-Lakes, Stewart County	31	1300CST				6	?		Heavy rains, flooding
An estimated 10 inches of rain fell between 0100 and 1300 causing flooding at a number of places in the area. Part of the north-south highway was washed away, and nearly all bridges in the historic Homeplace area were destroyed. Water flooded buildings at the Homeplace and destroyed a section of the buffalo fence.									
Clinton, Anderson County	31-1	2130-0300CST				5	?		Flash flooding
At least 300 people were forced from their homes as heavy rains caused flash flooding which damaged businesses and homes in Clinton. Twelve to 15 businesses were flooded in addition to several residences and a couple of apartment complexes including one housing elderly people. In the area south of Clinton on East Wolf Valley Road, entire sections of pavement were swept down Dismal Creek along with 17 cars. Two or three bridges were also washed away.									
41 TEXAS, Northern									
Bowie County	1	0600CST			0	0	?	?	Flash Flooding
Several inches of rain resulted in minor rural flash flooding across Bowie County.									
NW of Haskell, Haskell County	7	Aftn.			0	0	?	?	Flash Flooding
Five to 6 inches of rain produced minor flash flooding several miles northwest of Haskell.									
Vernon, Wilbarger County	27	1700CST			0	0	4	?	Windstorm
Thunderstorm winds to 60 MPH produced minor damage in Vernon to signs, trees, and powerlines.									
Lake Sandlin, Titus County	27	2300CST			0	1	3	?	Windstorm
Strong thunderstorm winds overturned several boats on Lake Sandlin. One fisherman received minor injuries.									
41 TEXAS, Southern									
Hardin County	6	1600CST			0	0	2	0	Tstm Winds
Winds from a thunderstorm damaged some trees near Village Mills.									
Harris County	8	1130CST			0	0	0	0	Funnel Cloud
A funnel cloud was sighted near Webster.									
Galveston County	10	0545CST			0	0	0	0	Waterspout
A brief waterspout was seen offshore just east of the city of Galveston.									
Montgomery County	10	1500CST			0	0	0	0	Funnel Cloud
A funnel cloud was spotted at FM1960 and IH45 just north of Intercontinental Airport.									
Harris County	11	1100CST			0	0	0	0	Funnel Cloud
Several funnel clouds were sighted in western Houston.									
Jefferson County	11	1745CST			0	0	0	0	Funnel Cloud
A funnel cloud was sighted 3SW of the Jefferson County Airport in Port Arthur.									
Chambers County	12	2130CST			0	0	0	0	Funnel Clouds
Several funnel clouds were sighted near Anahuac.									
Jefferson County	14	1027CST			0	0	0	0	Funnel Cloud
A small funnel cloud was observed in eastern Port Arthur.									

STORM DATA AND UNUSUAL WEATHER PHENOMENA

AUGUST 1982

PLACE	DATE	TIME - LOCAL STANDARD	LENGTH OF PATH (MILES)	WIDTH OF PATH (YARDS)	NO. OF PERSONS		ESTIMATED ¹ DAMAGE		CHARACTER OF STORM
					KILLED	INJURED	PROPERTY	CROPS	
TEXAS, Southern									
Bastrop County	17	1930CST			0	0	3	0	Tstm Winds
									Frees and power lines were downed in association with a heavy thunderstorm near Smithville.
Galveston County	20	0845CST			0	0	0	0	Funnel Clouds
									Two funnel clouds were sighted over East Bay in Galveston.
Galveston County	20	1135CST			0	0	0	0	Waterspouts
									Two waterspouts were sighted over Galveston Bay near San Leon. Both were short-lived.
41 TEXAS, Western									
Sweetwater, Nolan County	01	1740CST			0	0	?	0	Wind
									Very strong wind hit Sweetwater causing moderate damage to buildings.
Midland, Midland County	07	1513CST			0	0	5	0	Wind
									Straight line winds in advance of a thunderstorm tore the roofs off of about 100 storage units on the northeast side of Midland. Also, many tree limbs were down in the area.
San Angelo, Tom Green County	07	1703CST			0	0	4	0	Wind
									Straight line winds to 67 mph downed power lines, some trees and a few signs.
Texhoma, Sherman County	15	1715CST			0	0	5	?	Wind
									Straight line thunderstorm wind near 80 mph damaged a house, one trailer was destroyed, two trailers were blown off foundations and numerous highlines and fences down in and around Texhoma.
Sanford, Hutchinson County	15	1900CST			0	0	0	0	Hail
									Golfball-sized hail about 5 miles northwest of Sanford caused no damage.
42 UTAH									
Cache County Leviston	01	1500MST			0	1	0	0	Lightning
									A 16 year old male was injured when struck by lightning behind his home. He was in contact with a metal trailer when struck and was knocked about 20 feet. He later regained consciousness.
Uintah County	11	1530MST			0	2	5	0	Flash Flood
									On Wednesday evening, August 11, a Flash Flood occurred in Wagon Hound canyon about 5 miles south of Bonanza UT. A construction crew had just left a bridge building site on the White river and were heading up the canyon toward the town of Bonanza. about 1/2 to 3/4 of a mile up the canyon they encountered a wall of water that was described as 4 feet high and 60 to 70 feet wide. Five vehicles: two large trucks, two pick-up trucks, and one compact passenger car were destroyed. Eleven other vehicles were damaged including a two-trailer, belly dump gravel truck. four miles of a construction haul road were washed out. Also damaged were a portable cement batch and a large generator. Total damage was estimated at \$100,000.00. The two men waited in one truck until the water was 3 to 4 feet deep and then tried to swim to safety. One of them was washed 1/2 mile downstream. The other one was pinned against another truck, hurting his back.
Garfield County	25	1830MST			0	0	5	0	Flash Flood
									Flash Flooding was reported at Alvey wash, just south of Escalante, UT. At 6:30 PM MDT a report of 1.24 inches of rain in one hour at Escalante was received. At 7:30 PM MDT flooding damaged a road and washed out a small bridge which crossed the wash. A water pipe was also damaged and several homes were without water.
Salt Lake County	26	Afternoon			0	1	0	0	Lightning
									A 13 year old girl was struck by lightning as she was carrying a barbeque grill. The girl heard the thunder and looked up to see the "fire" strike the grill.
43 VERMONT ————— NONE REPORTED									
44 VIRGINIA									
Rockingham & Fauquier Counties	6				0	0	3	3	Rain
									Rainfall of 2-3 inches brought local street flooding in the Bridge-water-Harrisonburg area, from morning into the afternoon. There was an unofficial report of over 4 inches at Fulks Run, also in Rockingham County. An observer at Remington, Fauquier County, reported nearly 5 inches of rain.
Bedford County	7	2030EST			0	0	4	0	Lightning
									A family returned from vacation to find firefighters at their home. A lightning strike apparently had set fire to the dwelling, located two miles east of Stewartville. The upstairs rooms and attic were heavily damaged.
Southeastern	8	Afternoon			0	0	4	0	Rain, Lightning, Wind
									Thunderstorms brought locally heavy rainfall, with amounts between 2 and 4 inches in the Newport News-Hampton-Norfolk region. A total of 5.86 inches was measured in the Oyster Point section of Newport News. Lightning set fire to a wall of a mobile home near Smithfield, Isle of Wight County, while another lightning-caused fire at a Norfolk home was quickly extinguished. Locally strong winds took the tops off several trees near Grafton, York County and some sheet-metal siding was torn from a building in Poquoson.
Southeastern	11	Most of Day			0	0	4	0	Rain, Lightning, Wind
									Another rash of heavy thunderstorms produced 3-5 inch rainfall amounts. Street and underpass flooding was prevalent and there was at least one building damaged by a lightning-caused fire. Some wind damage was reported in Norfolk, while a Chesapeake City landscaping firm had up to \$4,000 loss to merchandise and materials due to high water.
Lunenburg & Brunswick Counties	16	Late Afternoon			0	0	0	5	Hail
									Tobacco farms lost, in some cases, up to 100% of their crop. Loss estimated around \$100,000.
Nottoway & Lunenburg Counties	17	1500-1700EST			0	0	0	5	Hail
									For a second day in a row, tobacco farms were devastated by hail. Some called it the worst hail damage to tobacco that was ever encountered. About 75 acres were destroyed in Lunenburg County, for a loss totaling around \$200,000. Damage in Nottoway County was estimated at about \$100,000.
Staunton (nr)	17	1830EST			0	4	5	0	Wind, Rain
									A 300-foot section of roof was stripped off a motel in the Mint Spring community. Plaster and other debris, along with rain, showered down upon 23 rooms making it necessary to evacuate the entire motel. Vehicles in the parking lot were also damaged. Injuries were minor, and included a 7-week-old baby who narrowly escaped more serious injury when a block of cement landed in her crib. Damage was expected to be over \$50,000.
Highland County	17	2045EST			0	0	4	0	Lightning
									A large chicken house near Hightown, that was being used for storage, was totally destroyed when lightning set it on fire.
Franklin County	18	Early Morning			0	0	4	4	Lightning, Hail
									Seven 2-year-old heifers were killed by a lightning strike near the community of Wirtz. They were valued at \$1500 to \$2000 each. At about the same time, hail hit tobacco farms near Smith Mountain Lake. Crops on two farms were damaged to the extent of around \$5,000 each.
Henry County	18	0200EST			0	0	5	0	Lightning
									Lightning was apparently the cause of a fire that destroyed a woodworking shop in Ridgeway. Loss was figured at about \$500,000.
45 WASHINGTON									
Walla Walla County (30 N of Walla Walla)	09	1625PST short narrow			0	0	0	0	Tornado(F0)
									A tornado associated with a line of thunderstorms occurred 30 miles north of Walla Walla. It only stayed on the ground for a brief period of time. No damage occurred.

STORM DATA AND UNUSUAL WEATHER PHENOMENA

AUGUST 1982

PLACE	DATE	TIME - LOCAL STANDARD	LENGTH OF PATH (MILES)	WIDTH OF PATH (YARDS)	NO. OF PERSONS		ESTIMATED ¹ DAMAGE		CHARACTER OF STORM
					KILLED	INJURED	PROPERTY	CROPS	

WASHINGTON

Douglas, Grant, Lincoln, Spokane, Walla Walla, Whitman & Yakima Counties

09 afternoon -- -- 0 0 % C Thunderstorms

A line of thunderstorms moved through a large portion of Eastern Washington and caused considerable damage. Brief heavy rainfall occurred with the passage of the line in many areas. The Yakima WSO in Yakima County reported .32 inches of rain in about 20 minutes. While unofficially, an inch of rain fell in about a five-minute period in some parts of Walla Walla county, no major flooding was reported. Wind gusts of 60 to 70 mph occurred in isolated areas of Yakima Valley. Grand Coulee in Douglas County suffered considerable wind damage. Numerous trees were uprooted and power lines were downed. In Grant and Spokane Counties, there were widespread power outages from downed trees and from lightning striking transformers. Yakima County suffered the most crop damage. Damage to the hops was estimated between two and three million dollars with damage set at one million dollars to the supporting trellises. The pear, apple, prune and peach crops were also damaged. The area damaged was in the vicinity of Moxee. In Walla Walla County dozens of lightning-caused fires occurred in grain fields. Near Odessa in Lincoln County strong winds did \$30,000 dollars worth of damage to a grain elevator receiving station. Near Colfax in Whitman County, 70 acres of standing grain were destroyed when lightning set the fields on fire.

46 WEST VIRGINIA — NONE REPORTED

WISCONSIN

Western Marquette County	01 2200CST	0	0	4	4	Wind, Hail
One quarter to 1/2 inch hail, accompanied by 60 mph winds, damaged crops in the Westfield area. High winds pushed three trailers from their foundations and damaged several others near County Highways 0 and F.						
Wycocena, Columbia County	02 2110CST	?	?	0	0	? ? Hail
Three-quarter inch hail occurred in the area.						
Marshall, Dane County	02 2140CST	?	?	0	0	3 3 Hail
One-inch hail caused minor damage to roofs and field crops in the area.						
Cable, Bayfield County	03 Afternoon	0	1	0	0	Lightning
A golf course attendant was struck and burned by lightning. He was hospitalized in good condition.						
15 Eastern Wisconsin Counties	03 1300CST 2230CST	2	2	6	6	Severe Thunderstorm
An east/west line of severe thunderstorms moved slowly south across eastern Wisconsin during the afternoon and evening causing widespread damage to buildings, electric facilities, trees and farm crops. High winds and heavy rains accounted for most of the damage, but hail also contributed in Oconto, Outagamie and Brown Counties. One death and one injury were attributed to lightning; one death and one injury to wind. The counties affected estimated dollar damage, time of occurrence (CST) and remarks follow:						
Oconto County: Approximately \$120,000 damage occurred between 2:00 - 4:30 p.m. 1 1/2 hail occurred in the Gillett area.						
Outagamie County: Approximately \$100,000 damage occurred between 3:00 - 7:00 p.m. Three to five inches of rain caused street flooding in Appleton and Kaukauna; 1/2-inch hail and 50 mph winds were reported at Kaukauna; electric power to 8,000 homes was interrupted.						
Brown County: Approximately \$1,500,000 damage occurred between 6:00 - 8:00 p.m. The hardest hit county, with the east section of Green Bay suffering most. Electric power to 20,000 Green Bay homes was interrupted. Wind estimated at 90 mph, combined with small hail, damaged 16,000 acres of corn and oats. Also, some street flooding occurred in Green Bay.						

WISCONSIN

Kewaunee County:	Approximately \$100,000 damage occurred between 7:00 - 9:00 p.m. The second hardest hit county, mainly from 75-85 mph winds. 5,000 homes in Oshkosh lost their power; 11 airplanes at the Experimental Aircraft Association Air Show were damaged, and one person at the show was injured by debris. Lightning struck and killed a man in Menasha.
Calumet, Manitowoc, Fond du Lac, Sheboygan Counties:	A total of \$400,000 damage occurred between 7:00 - 10:15 p.m. Scattered wind damage, consisting mostly of downed trees and power lines, and minor roof damage to rural structures. One death occurred two miles south of Reedsville (Manitowoc County) when a grain storage silo overturned in high winds and crushed a man. One injury occurred in Calumet County when lightning struck close to and burned a boy in Harrison Township.
Dodge, Washington, Ozaukee, Waukesha, Milwaukee and Racine Counties:	A total of approximately \$200,000 damage occurred between 8:30 - 11:30 p.m. Winds of 40 to 75 mph caused widespread damage to trees and power lines.
Oconto, Oconto County	26 1632CST 1 0 Lightning
Lightning struck and killed a golfer at the Edgewood Golf Course.	
Kaycee, Johnson County	5 1630MST 0 0 3 0 Lightning
Lightning ignited some dry timberland on the west side of Gardner Mountain just east of Middle Spring on Federal land. Six acres burned before the fire was declared out.	
Pine Bluffs, Laramie County	6 p.m. 0 0 0 3 Hail
A narrow hail belt threshed about 50 percent of a hundred-acre field of wheat six miles south of Pine Bluffs.	
Crook County	7 p.m. 0 0 4 0 Lightning
Lightning strikes caused two fires that burned 55 acres of timber and grass. Fifteen acres on the Ivan Policky ranch and forty acres on the old Maurice Hauber ranch 1-1/2 miles from Devil's Tower.	
Worland, Washakie County	9 p.m. 0 0 3 0 Thunderstorm
High wind associated with localized heavy rain and hail blew over an empty pup trailer on a Pepsi semi rig about four miles south of Worland causing \$3,000 damage. Local urban flooding was reported six miles south of the city.	
Glendo, Platte County	11 p.m. 0 0 2 0 Thunderstorm
Local rural flooding occurred when 1-1/2 to 2-1/2 inches of rain and small hail fell in less than one hour. Considerable damage to fences was reported.	
Albany County	12 1323MST 0 0 2 0 Lightning
Lightning caused a two-acre grass fire 30 miles northwest of Wheatland on the Albany County line.	
Upton, Weston County	16 1600MST 0 0 4 0 Lightning
A lightning-caused fire destroyed 800 acres of grassland 45 miles south of Upton.	
Wheatland, Platte County	18 1830MST 0 0 4 0 Lightning
Lightning struck one of the Laramie River Station Power Plant cooling towers igniting the fiber glass cowling around a fan. The blaze triggered the tower's automatic sprinkler system. Damages were estimated at \$10,000 to \$15,000.	
Afton, Lincoln County	18 p.m. 0 0 0 3 Lightning
Lightning hit and burned 50 tons of hay.	
Yoder and Hawk Springs, Goshen County	22 p.m. 0 0 0 4 Hail
A hail storm raked a four-square-mile area between Yoder and Hawk Springs with marble-size hail six to ten inches deep. The hail stripped the foliage from the area's corn, bean and sugar beet crops.	

STORM DATA AND UNUSUAL WEATHER PHENOMENA

AUGUST 1982

PLACE	DATE	TIME - LOCAL STANDARD	LENGTH OF PATH (MILES)	WIDTH OF PATH (YARDS)	NO. OF PERSONS		ESTIMATED ¹ DAMAGE		CHARACTER OF STORM
					KILLED	INJURED	PROPERTY	CROPS	
— WYOMING									
Sundance, Crook County	23 p.m.				0	0	4	3	Hail
A destructive hail storm caused severe damage to crops, buildings and vehicles in rural areas west and south of Sundance. The size of hail stones was not reported.									
49 ALASKA ————— NONE REPORTED									
50 HAWAII									
Hawaii and Maui	1				1	0	5	4	Rain, wind, surf
Tropical Depression GILMA moved south of the Big Island within 60 miles of South Point at 0200 HST on August 1. Heavy showers and thunderstorms to the northeast of the center caused localized flash flooding along windward Hawaii and Maui. Showers in the Hilo area occurred in two bursts, during the early morning hours and again in the afternoon. The showers on Maui occurred in the morning and forenoon. Hardest hit on Maui was the Kaanapali area as some showers wrapped around to the lee slopes of west Maui and dumped 6 to 8 inches of rain on the slopes above Kaanapali between 0900 and 1200 HST. Only minor wind damage was reported on Big Island as winds gusted near 50 mph in the Waimea area and over the Kona and Kau slopes. High surf on the southeast coast of Hawaii caused the death of an elderly Fisherman swept off a rocky ledge into the surf.									
Hawaii	9-10				0	0	4	4	Rain, wind, surf
Heavy rains on the Big Island during the passage of Tropical Storm JOHN far south of the Big Island along 13°N caused minor flooding along the windward coast with heaviest showers over the Honokaa and Kohala mountain areas. Winds gusted at 58 mph in Kawaihae area and a tree fell on a car and demolished it at a south Kohala beach area. Otherwise wind damage was light. Kalapana beach road flooded and closed on the night of 8th-9th by high surf spilling over roadway.									
Statewide	14-16				1	0	5	4	Rain, surf
Hurricane KRISTY moved south of the Big Island on the 13th and became nearly stationary near 15°N and 157°W on the 14th and then moved northwest and later westward away from the State on the 15th and 16th. High surf at Kona on the 14th caused the drowning of a man. Minor flash flooding occurred on several islands including the overflow of Waiawa stream on Oahu.									
51 PUERTO RICO									
Aguas Buenas	10	1200AST			1	0	0	0	Lightning
A 14 year old boy was struck by lightning while standing under a tree in his school yard in Barrio Sumidero.									
Yauco	10	1600AST			3	0	0	0	Lightning
A mother, her 11 year old daughter and another man were killed by lightning while standing in a field in Barrio Susua Baja during a violent electrical storm.									
52 VIRGIN ISLANDS ————— NONE REPORTED									
53 PACIFIC ————— NONE REPORTED									

REFERENCE NOTES

† Storm damage categories are from	*	Miles instead of yards
1 to 9 as follows:	**	Yards instead of miles
1 Less than \$50	0	Includes crop damage
2 \$50 to \$500	@	Includes heavy sleet storm
3 \$500 to \$5,000	#	Freezing drizzle and freezing rain, commonly known as glaze
4 \$5,000 to \$50,000	≠	Not received or incomplete
5 \$50,000 to \$500,000		
6 \$500,000 to \$5 Million		
7 \$5 Million to \$50 Million		
8 \$50 Million to \$500 Million		
9 \$500 Million to \$5 Billion		

"F" SCALE DEFINITIONS

0 = 40-72	MPH	Breaks branches off trees; signboards damaged.
1 = 73-112	MPH	Peels surface off roofs; trailer houses pushed or damaged.
2 = 113-157	MPH	Tears roofs off frame houses and outbuildings; cars blown off highway.
3 = 158-206	MPH	Windows of skyscrapers smashed; frame houses destroyed; cars lifted off ground.
4 = 207-260	MPH	Skyscrapers twisted; frame houses leveled; cars blown some distance.
5 = 261-	MPH	or greater.

USCOMM-NOAA-ASHEVILLE, NC 1982-3000

DEPARTMENT OF COMMERCE
NATIONAL OCEANIC AND ATMOSPHERIC ADMINISTRATION
ENVIRONMENTAL DATA AND INFORMATION SERVICE
NATIONAL CLIMATIC CENTER
FEDERAL BUILDING
ASHEVILLE, N.C. 28801

POSTAGE AND FEES PAID
U.S. DEPARTMENT OF COMMERCE

COM 210
THIRD CLASS
BULK RATE

