

MARCH 1982

VOLUME 24

NUMBER 3

STORM DATA



"I CERTIFY THAT THIS IS AN OFFICIAL PUBLICATION OF THE NATIONAL OCEANIC AND ATMOSPHERIC ADMINISTRATION AND IS COMPILED FROM INFORMATION RECEIVED AT THE NATIONAL CLIMATIC CENTER, ASHEVILLE, NORTH CAROLINA 28801."

Daniel B. Mitchell

DIRECTOR
NATIONAL CLIMATIC CENTER

noaa

NATIONAL OCEANIC AND
ATMOSPHERIC ADMINISTRATION

ENVIRONMENTAL DATA AND
INFORMATION SERVICE

NATIONAL CLIMATIC CENTER
ASHEVILLE, N.C.

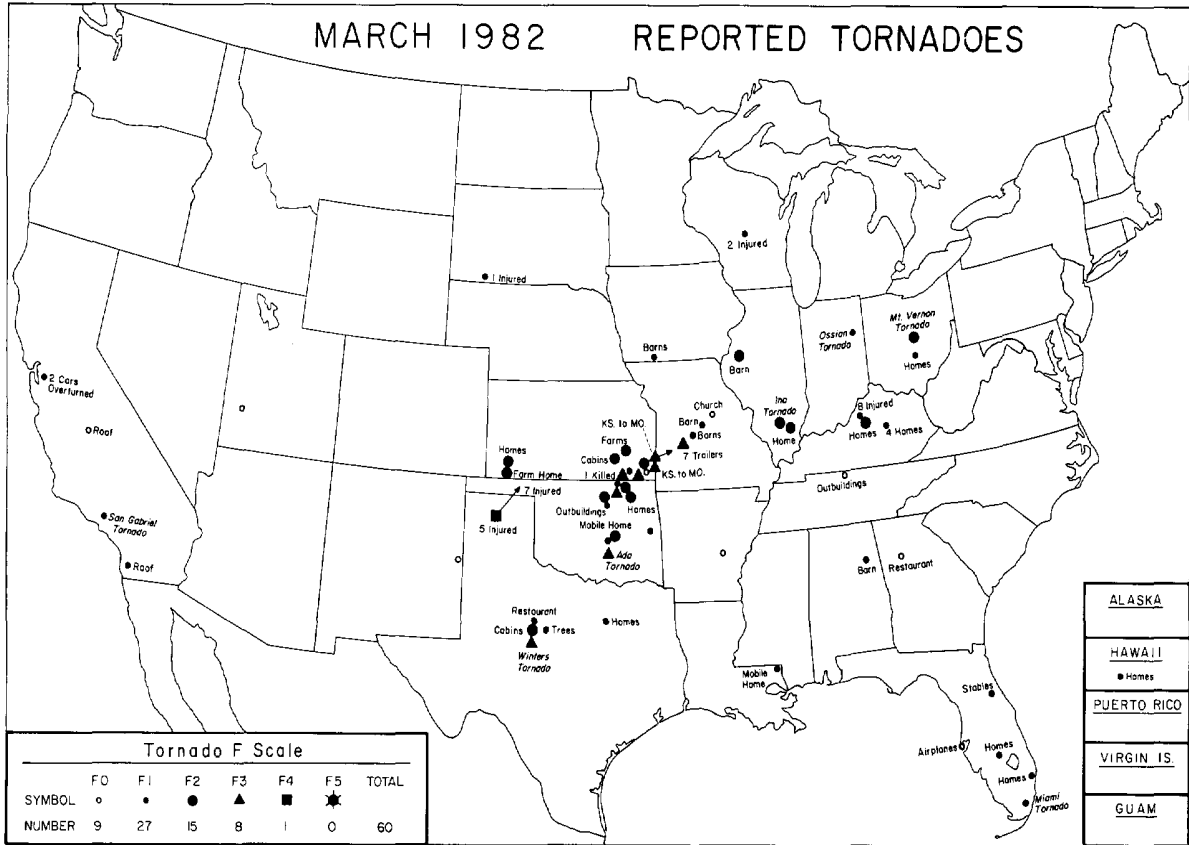
C O N T E N T S

	<u>Page</u>
Outstanding Storms of the Month	3
Storm Data and Unusual Weather Phenomena	14
Storm Summary	29
Reference Notes	30
"F" Scale Definitions	30

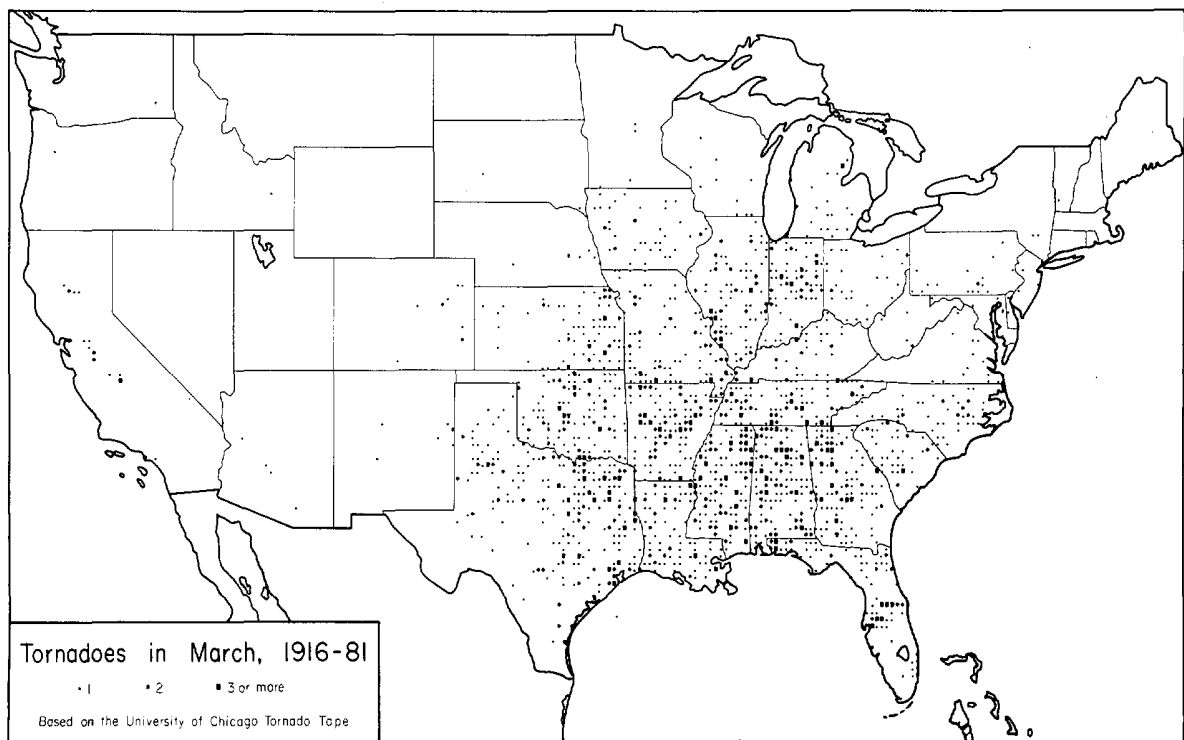
NOTE: The section on Outstanding Storms of the Month is prepared and edited by Professor T. Theodore Fujita, University of Chicago. The narrative descriptions of Storms by State and Summaries of Hurricanes and Tropical Storms are prepared by the National Weather Service. The National Climatic Center compiles the statistics on deaths, injuries, and damage. This publication contains our best information on storms but, due to the difficulties inherent in collection of this type of data, it is not all-inclusive. Late Reports and Corrections will be carried quarterly.

STORM DATA - (USPS 363-010) is published monthly. Subscription, pricing, and ordering information is available from: Publications Section, The National Climatic Center, Environmental Data and Information Service, NOAA, Federal Building, Asheville, NC 28801.

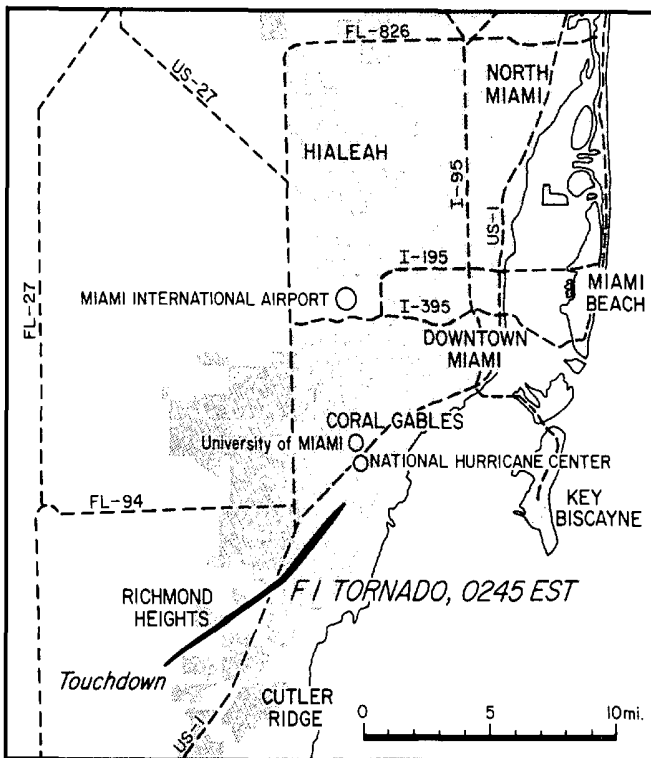
OUTSTANDING STORMS OF THE MONTH



● TYPED REPORT RECEIVED	○ PRELIMINARY REPORT RECEIVED	○ NO REPORT RECEIVED	(N) northern (S) southern	(E) eastern (W) western	(C) central (O) coastal
● 1AL	● 5CO	● 10ID	● 15KY	● 20MI	● 25NE
● 2AZ	● 6CT	● 11IL	● 16LA	● 21MM	● 26NV
● 3AR	● 7DE	● 12IN	● 17ME	● 22MS	● 27NH
● 4CA(N)	● 8FL	● 13IA	● 18MO	● 23MO	● 28NJ
● 4CA(S)	● 9GA	● 14KS	● 19MA	● 24MT	● 29NM
○ 30NY(O)	○ 30NY(C)	○ 30NY(W)	○ 31NC	○ 32ND	○ 33OH
○ 34OK	○ 35OR	○ 36PA(E)	○ 36PA(W)	○ 37RI	○ 38SC
○ 39SD	○ 40TN	○ 41TX(S)	○ 41TX(N)	○ 42UT	○ 43VT
○ 44VA	○ 45WA	○ 46WV	○ 47WJ	○ 48WY	○ 49AK
○ 50HI	○ 51PR	○ 52VI	○ 53GU		



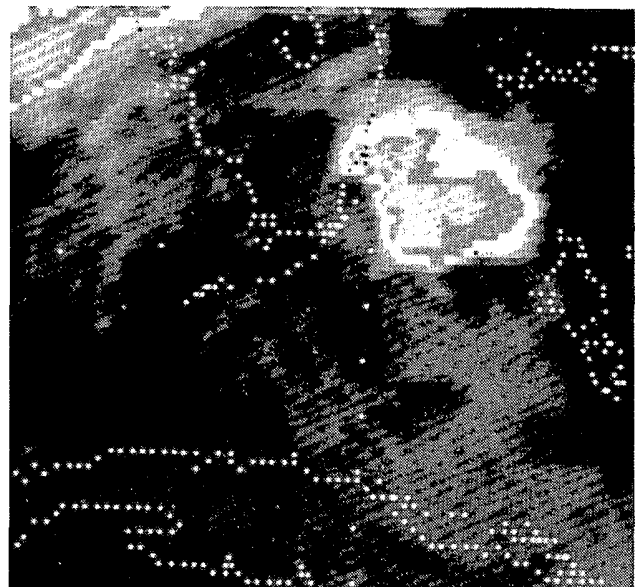
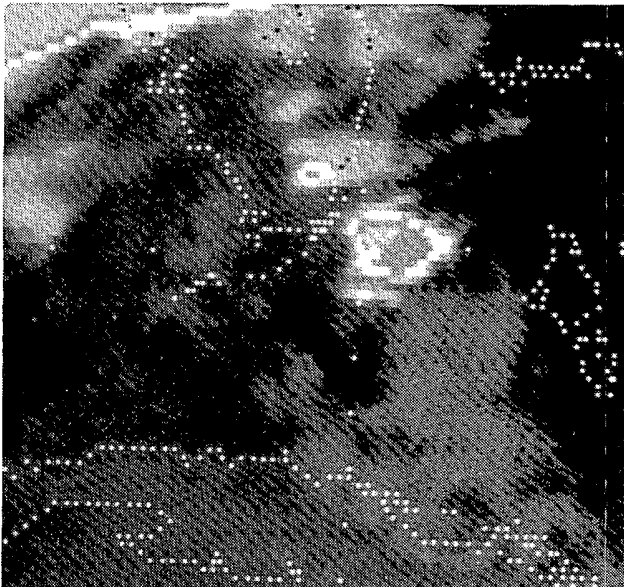
1. GREATER MIAMI TORNADO on March 6, 1982



Path of the tornado which lifted 1 mile south of the National Hurricane Center (NHC). ---Survey map supplied by NHC.



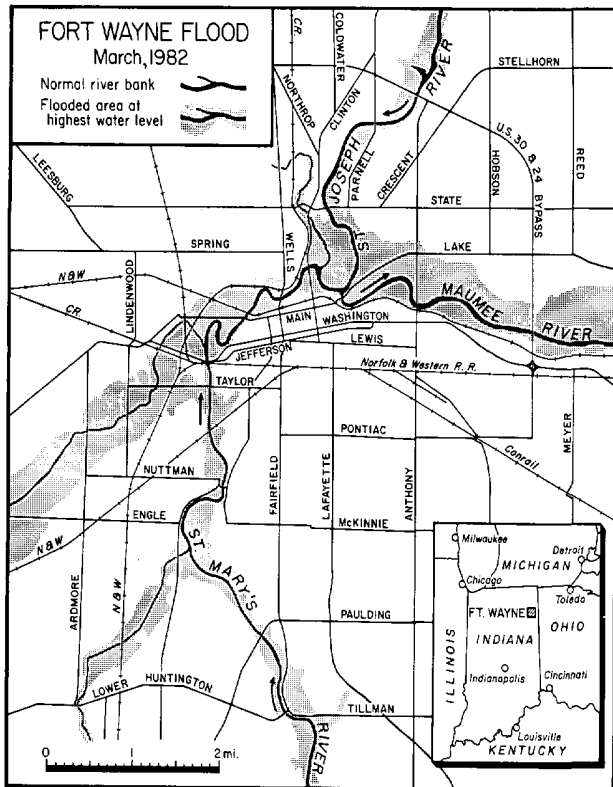
A boat trailer lifted by the tornado onto a house roof (top) and a large camper overturned at Richmond Heights. ---Photos courtesy of the Miami Herald.



0200 EST (45 minutes before the tornado) 0300 EST (15 minutes after the tornado)

Infrared images of the thunderstorm which produced the Greater Miami Tornado. Infrared temperature is shown in white and gray areas: outer boundary of white.... -20°C, outer boundary of dark gray....-35°C, and outer boundary of light gray.... -45°C. The tornado bearing cloud in these pictures does not appear to be impressive at all. ---Photos by NESS.

2. FORT WAYNE FLOOD in mid-March, 1982



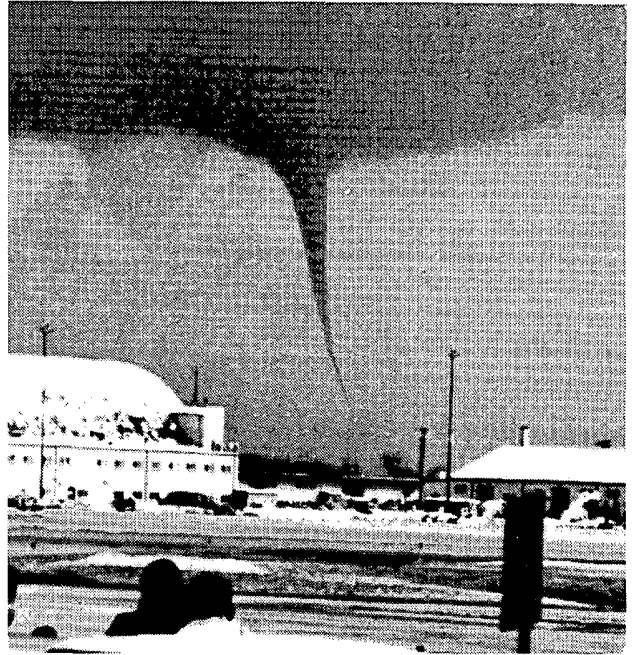
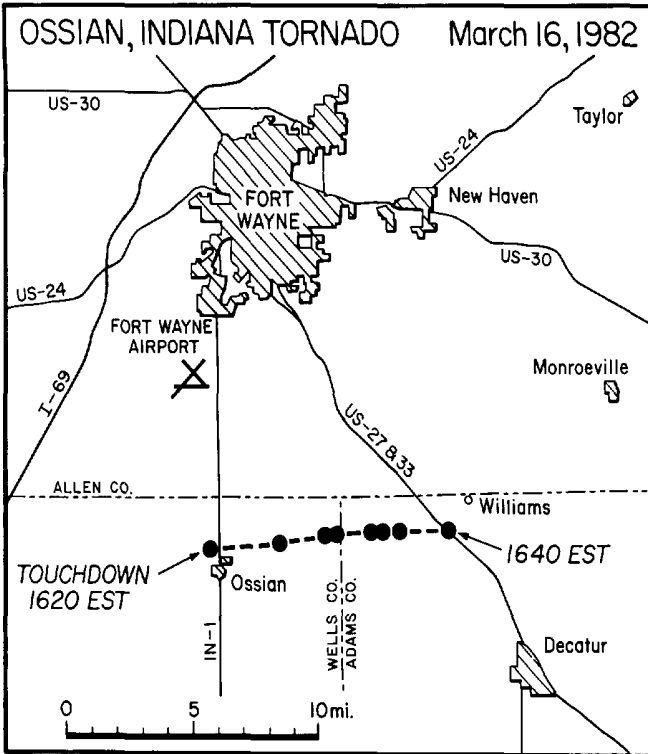
Floodwater in the residential area of Fort Wayne. Water had forced its way through sandbag barriers built by volunteers. ---Photo by Mike Hanley, The News-Sentinel.

Map showing areas of Fort Wayne which flooded as the St. Joseph, St. Mary's and Maumee Rivers spilled over their banks. ---Mapping by Office of the Mayor, Fort Wayne; supplied by David Perlini.



A large portion of downtown Fort Wayne engulfed by floodwaters of the St. Mary's River flowing from right to left. The Old Fort appears near the lower left corner. ---Photo (looking southwest) by John Stearns, Fort Wayne News-Sentinel.

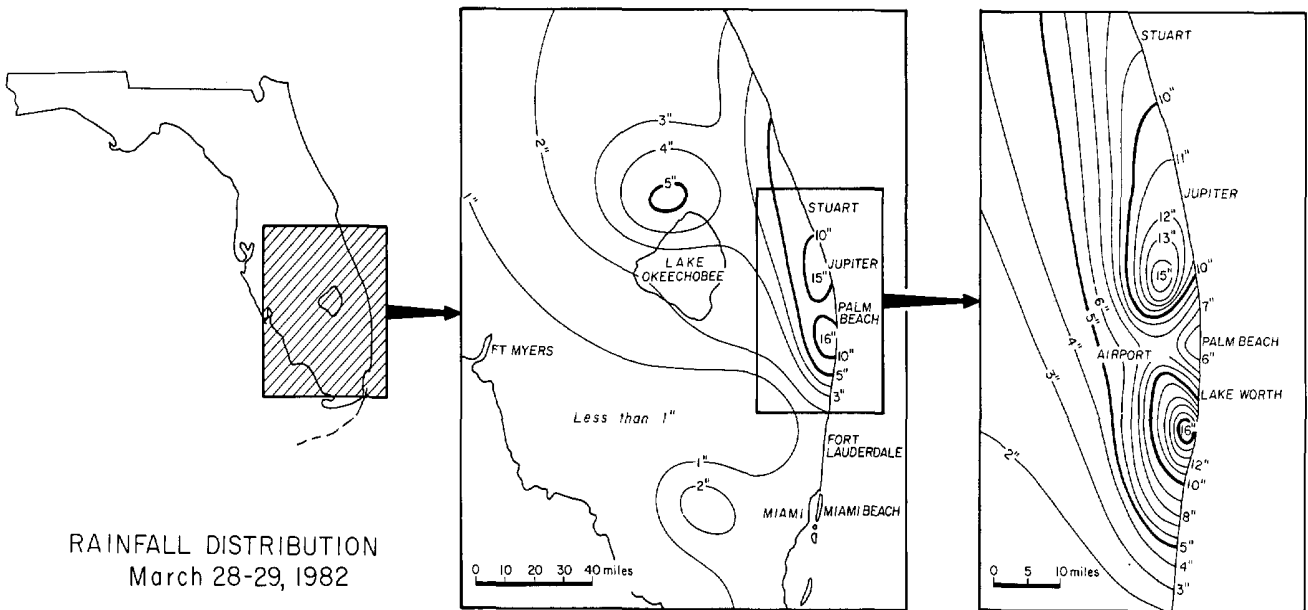
3. OSSIAN, INDIANA TORNADO on March 16, 1982



The tornado as seen from Fort Wayne Airport.

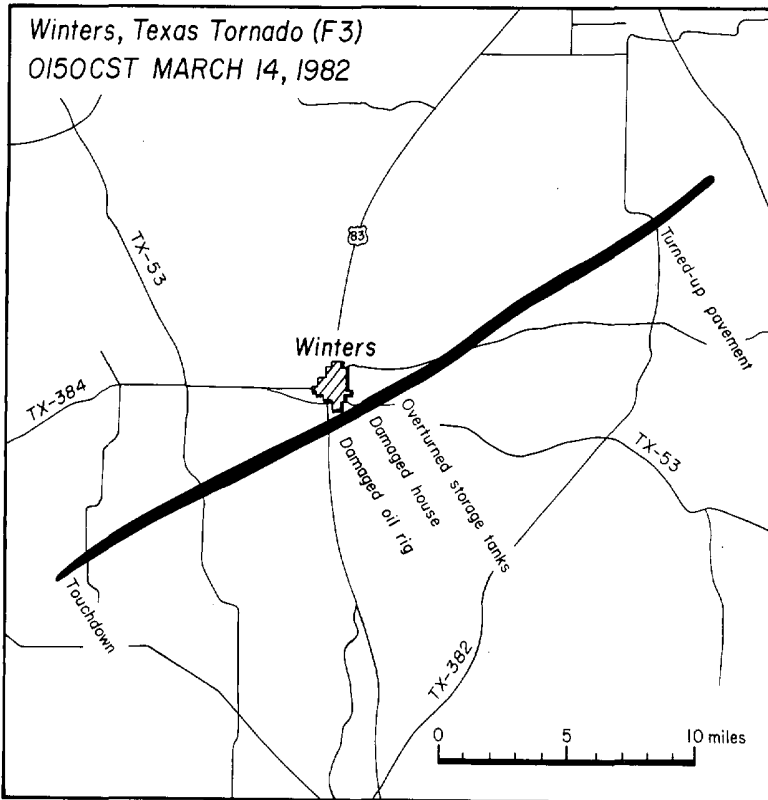
A small tornado left a 10 mile skipping path beginning at Ossian, Indiana about 10 miles south of Fort Wayne. The tornado was seen by many people waiting at the airport to see President Reagan who was coming to view the Fort Wayne Flood. The President arrived about 30 minutes after the tornado had passed. ---Mapping and photo by NWS Fort Wayne, Indiana.

4. SOUTHERN FLORIDA HEAVY RAINS on March 28-29, 1982

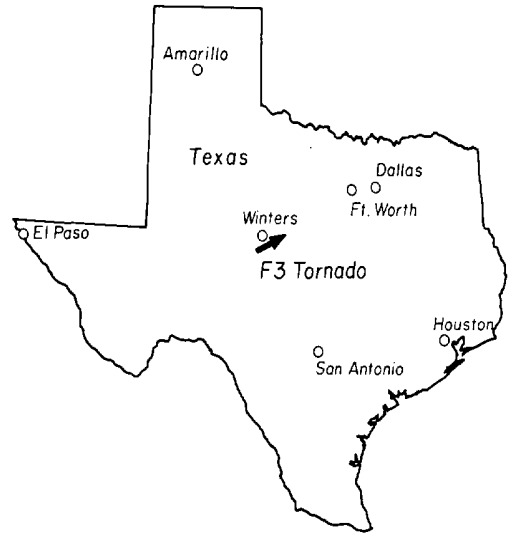


Maps showing the distribution of rainfall from a storm which struck the east coast of Southern Florida on the evening of March 28th and morning of the 29th. Heavy damage resulted from local flooding. ---Based on rainfall data by Steve Lin and Jim Lane, Water Resources Division, Resource Planning Department. Supplied by Prof. C. L. Jordan, Florida State University.

5. WINTERS, TEXAS TORNADO on March 14, 1982



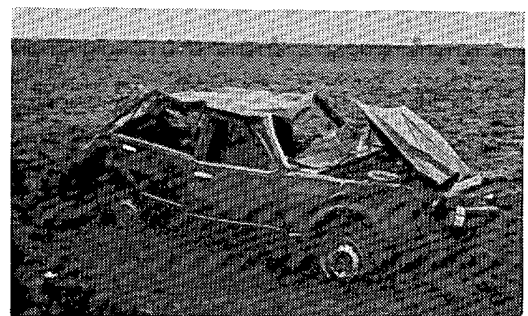
Damage path of the Winters, Texas Tornado



Fallen oil rig south of Winters.



25 feet of pavement peeled off of Texas Highway 382 by the tornado's winds.



A car blown 60 yards from the oil rig site.

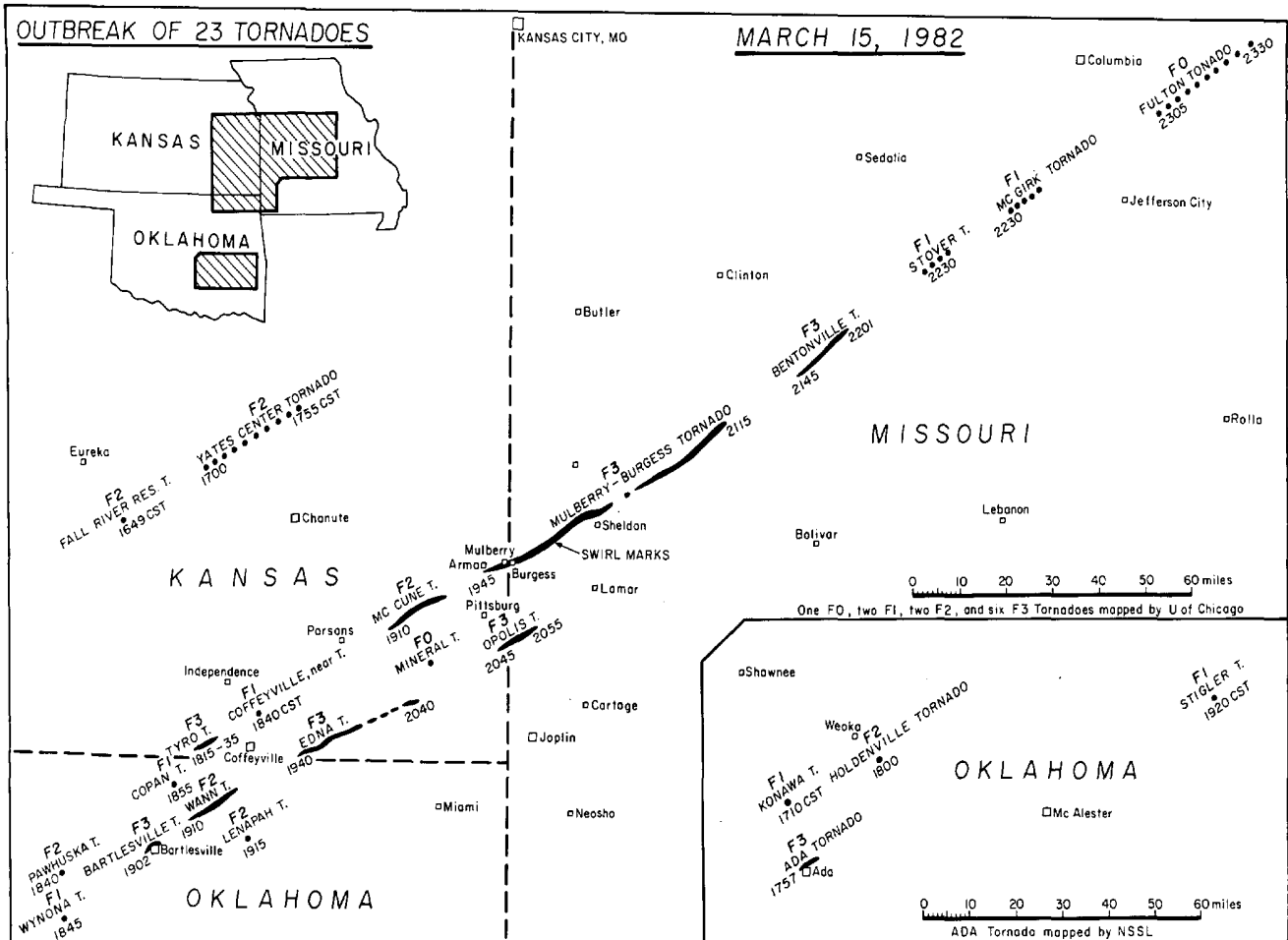
---Damage map and photos supplied by Arthur Talamantes, NWS San Angelo, Texas.

6. SAN GABRIEL, CALIFORNIA TORNADO on March 29, 1982

A large tree uprooted by the San Gabriel, Ca. Tornado.
 ---Photos supplied by NWS Los Angeles, California.



7. OKLAHOMA, KANSAS and MISSOURI TORNA DO OUTBREAK on March 15,1982



Paths of 23 tornadoes in Oklahoma, Kansas and Missouri which occurred on the evening of March 15, 1982. ---Above figure from surveys and mappings by Univ. of Chicago, NSSL and NWS.



An aerial view (left) looking northwest at Hallowell, Kansas which was struck by the Edna Tornado. The tornado moved from left to right. A collapsed, 500 ft. communications tower (right) 2 miles east of Arma, Kansas. ---Both photos by Philip Shideler, NWSFO Topeka, Kansas.

TORNADO OUTBREAK of March 15, 1982 ---- Continued



Barn damage north of Sheldon, Mo.
(UC Photo)



A house with roof damage in Mulberry, Ks.
---Photo by Max Griffith, NWS Wichita, Ks.



Widespread damage inside the 0.5 mile wide
swath through Burgess, Mo. (UC Photo)



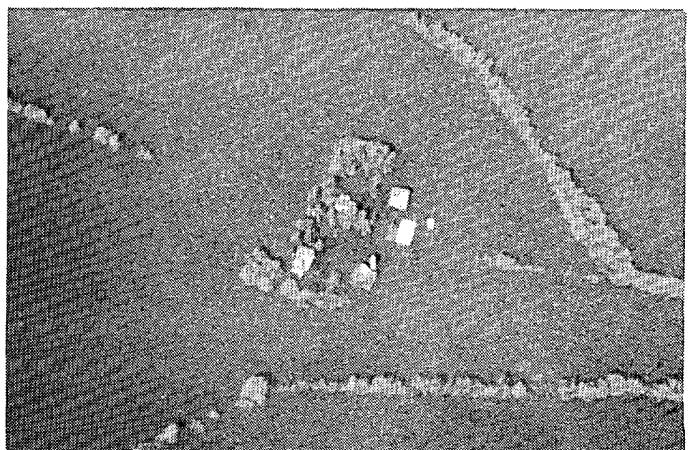
Suction vortex marks (swirl marks)
in the Mulberry-Burgess Tornado.
(UC Photo)

---UC Photos were taken on March 27-28, 1982 by Duane Stiegler, University of Chicago.

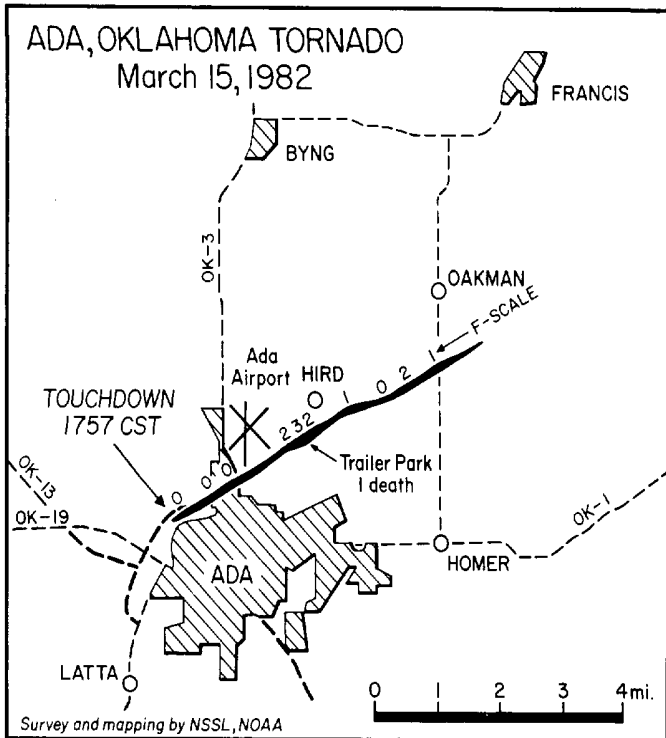
8. ILLINOIS RIVER FLOOD

Many rivers in central Illinois flooded in mid to late March due to rapid snowmelt.

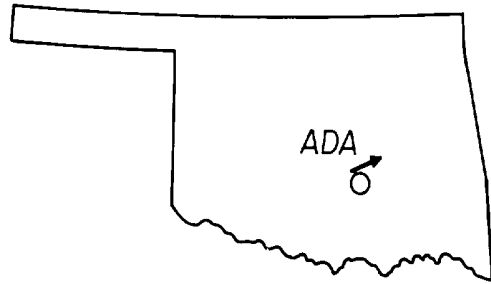
At right, a farm in floodwater near the Illinois and Sangamon Rivers about 60 miles southwest of Peoria, Illinois. ---Photo by Duane Stiegler, University of Chicago, from a Cessna 182 on the way to a tornado survey March 27, 1982.



9. ADA, OKLAHOMA TORNADO on March 15, 1982



The damage path of the Ada, Oklahoma Tornado surveyed and mapped by National Severe Storms Laboratory, NOAA.



Picture of the Ada Tornado taken by Kenneth Hutcheson from Highway 19 looking northeast.

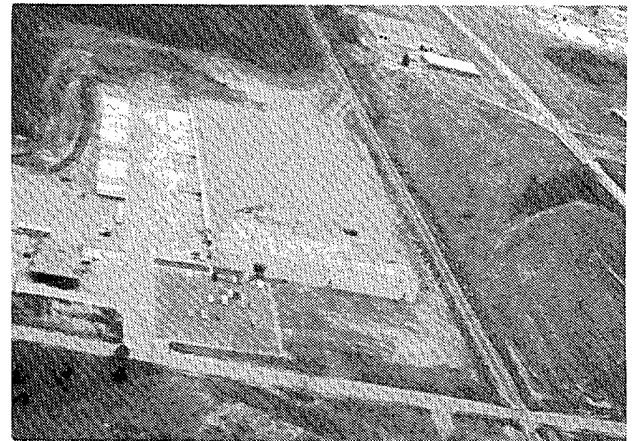
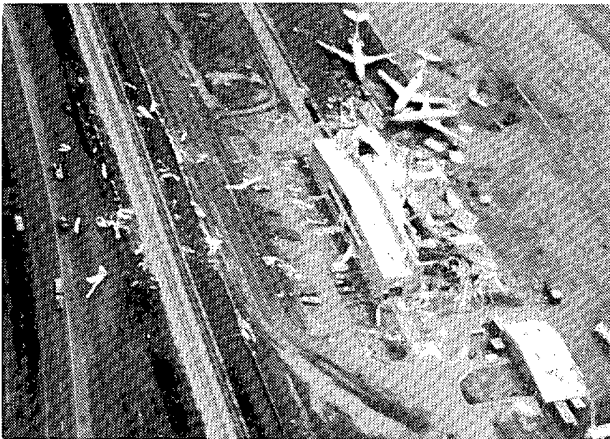
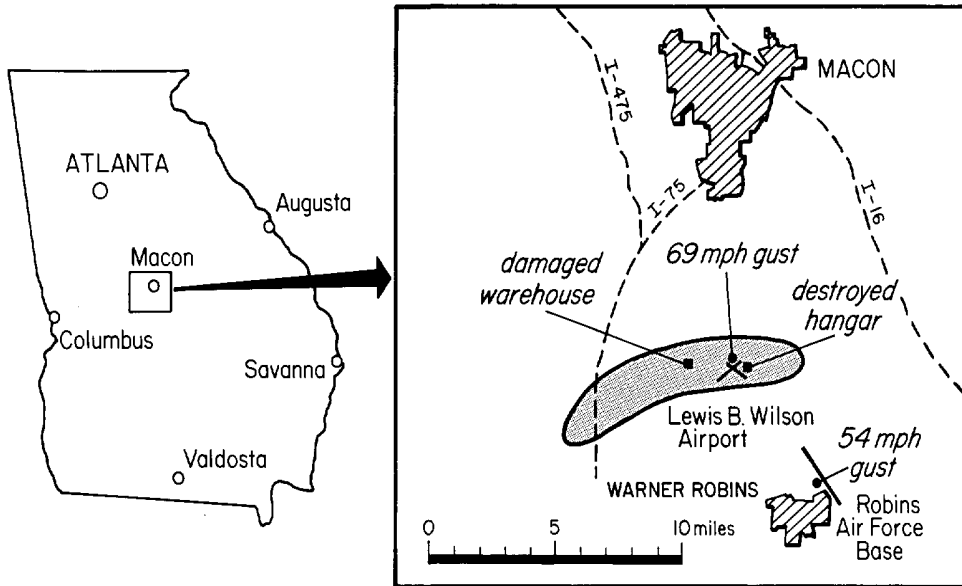


Damage photos taken in "The Brooke" trailer park just northeast of Ada where 1 death and 36 injuries occurred. Of 123 mobile homes in the park, 51 were destroyed and 17 extensively damaged.

---Photos by NSSL, NOAA; supplied by Don Burgess.

10. DOWNBURST near MACON, GEORGIA on March 21, 1982

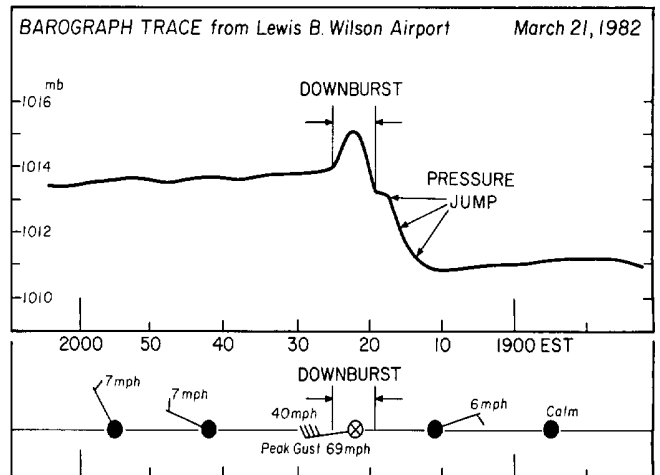
A strong downburst damaged the TG&Y warehouse south of Macon and a large hangar at Lewis B. Wilson Airport. Tree and structural damage was reported from the shaded area in the map below. ---Data and photos supplied by NWS Macon, Georgia.



Roof damage of the TG&Y warehouse (looking north).

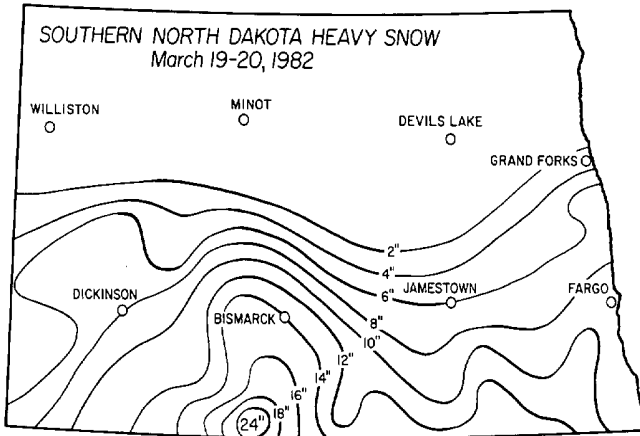


Aerial view (top) of the damaged hangar housing the Zantop Airlines Maintenance shop (looking south). Damaged hangar and aircraft (looking east).

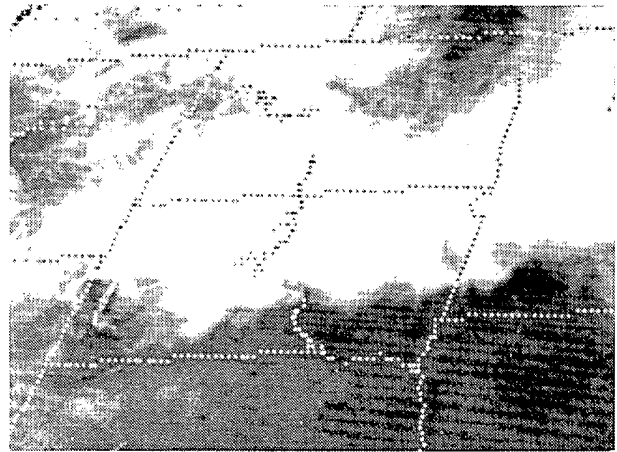


Pressure jumped 2 mb shortly before the downburst at 1922 EST. A dome-shaped pressure rise occurred during the downburst.

11. NORTHERN PLAINS HEAVY SNOW on March 19-20, 1982

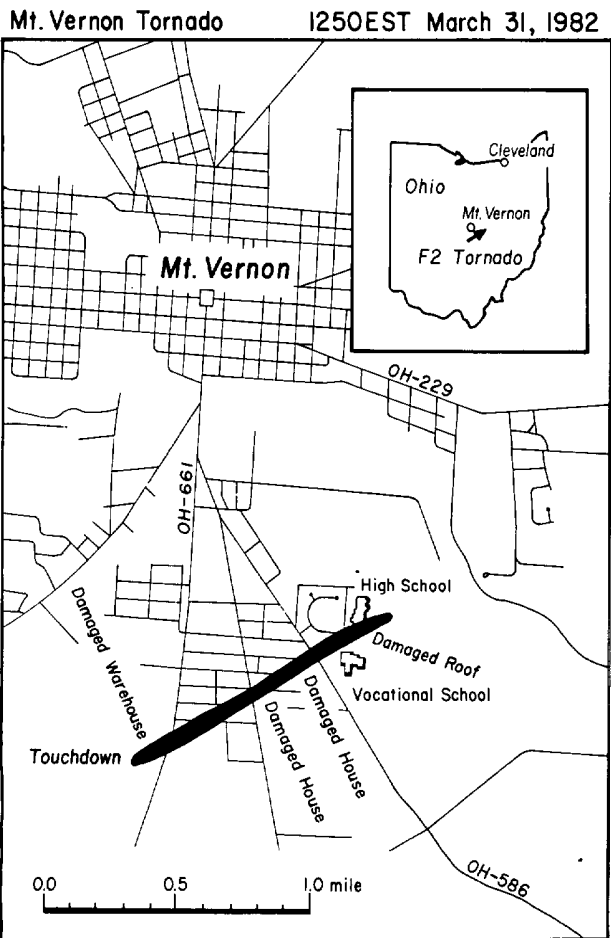


North Dakota snow depth mapped by NWSFO Bismarck, N.D.

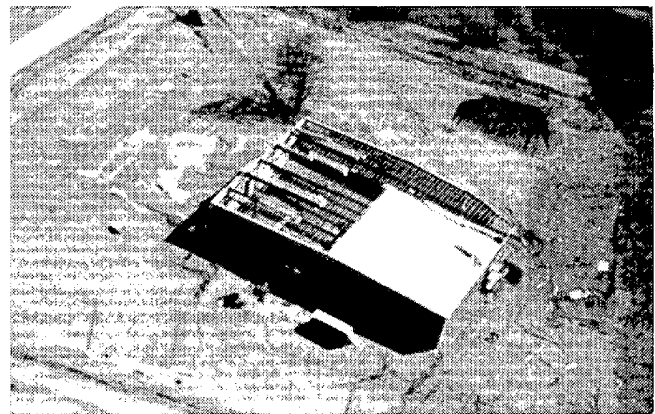


Snow cover over North and South Dakota seen in satellite picture by NESS.

12. MT. VERNON, OHIO TORNADO on March 31, 1982



Damage swath of the Mt. Vernon, Ohio Tornado mapped by NWS Mansfield, Ohio.

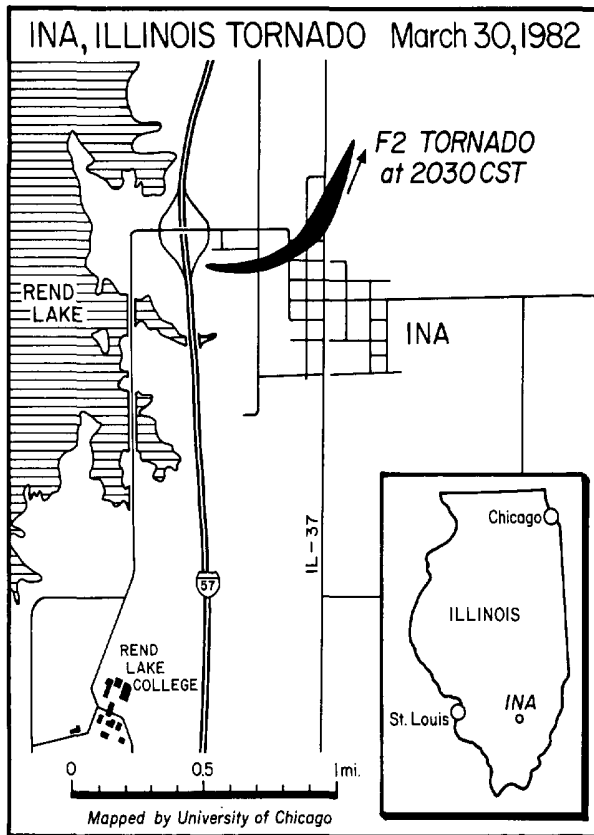


Damaged warehouse near the touchdown location.



Damaged houses and debris left behind by the tornado. ---Aerial photos supplied by NWS Mansfield, Ohio.

13. INA, ILLINOIS TORNADO on March 30, 1982



Path of the tornado through the small community of Ina, Illinois. ---Mapped by University of Chicago.



Debris from a double-wide mobile home blown across the street into a house.



A house rotated 30° off its foundation. ---Photos supplied by NWSFO St. Louis, Mo.

Double-wide mobile home blown from foundation (foreground) and rotated house (right center). ---Photo taken on March 31 by Paul Ockrassa, St. Louis Globe-Democrat.



STORM DATA AND UNUSUAL WEATHER PHENOMENA

MARCH 1982

PLACE	DATE	TIME - LOCAL STANDARD	LENGTH OF PATH (MILES)	WIDTH OF PATH (YARDS)	NO. OF PERSONS		ESTIMATED DAMAGE		CHARACTER OF STORM
					KILLED	INJURED	PROPERTY	CROPS	

PLACE	DATE	TIME - LOCAL STANDARD	LENGTH OF PATH (MILES)	WIDTH OF PATH (YARDS)	NO. OF PERSONS		ESTIMATED DAMAGE		CHARACTER OF STORM
					KILLED	INJURED	PROPERTY	CROPS	

ALABAMA

Blount Springs area, S.W. Blount County	15	1345CST		0	0	3	0	Wind	
Thunderstorm winds damaged a mobile home and ripped the porch off one home.									
Calhoun County	15	1515CST	8	75	0	0	4	0	Tornado (F1)
The tornado first touched down near the intersection of U.S. 431 and Alabama 62 north of Alexandria where the roof of a service station was damaged. The tornado moved ESE dipping up and down before finally lifting in the Anniston Beach area east of Fournille. It was on the ground about 40 percent of the time. A mobile home was overturned at Weaver. A barn and a carport roof were destroyed in the Fournille area. The tornado blew away the pressbox roof and the scoreboard at the stadium north of Alexandria. Football players and coaches out for spring training saw the storm approaching and took shelter. Hail to golf ball size accompanied the storm. Trees and some utility lines were downed.									
Bessemer area, Jefferson County	15	1545CST			0	0	4	0	Wind/Hail
Thunderstorm winds downed trees; one falling tree demolished a late model automobile. Another falling tree damaged a carport and an apartment complex had roof damage. Hail up to 1 inch in diameter fell during the storm.									
Pelham, Shelby County	15	1610CST			0	0	4	0	Lightning
Two houses were damaged by fires after being struck by lightning.									
Scottsboro, Jackson County	17	0900CST			0	0	3	0	Lightning
Lightning damaged 8 houses along Kyle Street and Money Lane in Scottsboro. Most of the damage apparently resulted from one tremendous bolt of lightning that struck a huge oak tree in the yard of one of the homes on Kyle Street. A witness 2 blocks from the scene reported "yellowish-brown" smoke boiling from the scene and that the sound just kept roaring. No blaze broke out. Numerous windows were broken, electric outlets were blown from walls and lighting fixtures were blown from the ceiling in one home. Concrete blocks were shattered and a portion of the wall siding knocked off one home. The electric meter of another home was found 20 feet away. Rust in watermains was jarred loose by the blast.									
Basham Community, South of Decatur, Morgan County	17	1240CST							Hail
Hail larger than golfball size piled up to 1 1/2 inches deep.									
Selma area, Dallas County	17	1354CST							Wind
Hail and thunderstorm winds to 75 mph reported at Craig Field.									
Spring Hill, Barbour County	17	1445CST							Hail/wind
Hail to golfball size reported along with high winds.									
Dallas County	21	1430CST			0	0	3	0	Wind
Thunderstorm winds damaged the roof of one store in Selma. A sign was blown down in front of another store. Some trees were also downed in the area. There were numerous reports of marble sized hail as this storm crossed Dallas County.									
Northern Elmore County	21	1430CST			0	0	4	0	Wind
A barn was damaged by thunderstorm winds. Trees and power lines were also downed. Most of the damage was in the area around Lake Jordan.									
Montgomery, Montgomery County	21	1500CST							Wind
Wind gust to 34 knots at Dannelly Field. A light aircraft was overturned. Extent of damage unknown.									
Tallapoosa County	21	1515CST			0	0	4	0	Wind
Thunderstorm winds downed powerlines south of Dadeville and trees along the eastern shore of Lake Martin. Several boats were capsized.									
Lee and Macon Counties	21	1535-1550CST			0	0	1	0	Hail/wind
Marble size hail reported around Auburn, marble to golfball size hail 10 miles north of Opelika, and golfball size hail in Tuskegee. Minor wind damage was reported around Waverly.									
Phenix City, Russell County	21	1645CST			0	0	3	0	Hail/wind
Thunderstorm winds took the top off a trailer and golfball size hail was reported.									
State	25	Afternoon							Hail/wind
Thunderstorms dumped hail on at least 23 Alabama counties during the afternoon. The hail was mostly marble size or smaller, but ranged up to the size of golf balls in some areas. The hail damaged several hundred acres of corn, wheat and tomatoes in southeast Alabama. Damaging winds accompanied the hail in a few areas. Individual reports of large hail and wind damage follow:									

ALABAMA

Decatur, Morgan County	25	1300CST		0	0	3	0	Hail/wind	
Thunderstorm winds destroyed an old barn and hail 1/2 inch in diameter was reported.									
Waterloo, Lauderdale County	25	1300CST							Hail
Hail to 3/4 inch in diameter.									
Jasper area, Walker County	25	1335CST			0	0	2	0	Hail
One-half inch hail reported covering the ground. Some windows broken.									
South Dallas County	25	1425CST							Hail/wind
Golfball size hail and strong winds reported.									
Leighton, Colbert County	25	1525CST							Hail
Hail 1/2 to 3/4 inch in diameter.									
Courtland, Lawrence County	25	1525CST							Hail
Hail 1/2 to 3/4 inch in diameter.									
Monroeville, Monroe County	25	1545CST							Hail
Golfball size hail reported.									
Dothan area, Houston County	25	1603CST							Hail
Quarter size hail reported covering the ground north of Dothan. Marble size hail southside of the city.									
Echo area, Dale County	25	1615CST			0	0	4	0	Hail/wind
Thunderstorm winds downed trees and utility lines and blew most of the roof off the back part of a house. Hail to golf ball size pelted the area. Some windows were broken by the hail, and it also beat the paint off the side of some buildings. There was also some damage to crops.									
Calhoun County	25	1618CST							Hail
Golfball size hail was reported in the Jack Webb Community north of Jacksonville and north of Anniston just off U. S. 431.									
Rehobeth and Taylor Area, Houston County	25	1620CST			0	0	4	0	C° Wind/hail
Thunderstorm winds damaged two homes, a store, outbuildings and downed trees and utility lines. One automobile was damaged by a falling roof. Hail nearly the size of golf balls was reported with some crop damage. An inch accumulation of hail was reported to still be on the ground more than an hour after the storm ended.									
Newville Area, Henry County	25	1625CST			0	0	4	0	Wind/hail
Thunderstorm winds uprooted trees, damaged roofs and blew down a utility shed and a barn. Hail accompanied the storm along with blinding rain.									
Coffee, Geneva and Covington Counties	25	1700-1800CST			0	0	4	0	C° Hail/wind
Trees were downed by thunderstorm winds along Highway 77 near Enterprise. Marble size hail almost covered the ground in southwest Covington County. Crop damage due to the hail was reported in Geneva County where large hail covered the ground in places. The hail also damaged the paint on some buildings south of Andalusia.									
Red Bay, Franklin County	31	0045CST							Hail
Golfball size hail reported.									
Rogersville, Lauderdale County	31	0120CST							Hail
Golfball size hail reported.									
Bayou LaBatre,	31	0400CST			0	0	4	0	Wind
Thunderstorm winds demolished a concrete block garage and damaged an automobile that was parked inside the garage. A carport in the area was also damaged and some power lines were downed.									
Florence Area, Lauderdale County	31	1352CST							Hail
Golfball size hail reported.									

STORM DATA AND UNUSUAL WEATHER PHENOMENA

MARCH 1982

PLACE	DATE	TIME - LOCAL STANDARD	LENGTH OF PATH (MILES)	WIDTH OF PATH (YARDS)	NO. OF PERSONS		ESTIMATED DAMAGE		CHARACTER OF STORM
					KILLED	INJURED	PROPERTY	CROPS	
2 ARIZONA									
Coconino and Yavapai Counties	11-12				1	0	5	0	Flash Flooding
	Heavy rains of 2 to 4 inches caused flash flooding of streams, creeks and washes. At Williams, huge amounts of water poured over the Santa Fe Dam forcing the evacuation of between 30 and 40 families. There was considerable damage to streets, sidewalks, yards, buildings and the city swimming pool. At Sedona, Oak Creek rose to near flood stage and 20 families were evacuated from two small mobile home courts in Oak Creek Canyon. There was some damage to side roads in the area, but no major damage in Sedona. At Flagstaff, there was considerable flooding of streets, residential areas and mobile home parks to a depth of several feet. It was one of the worst floods in the city since 1937. At Prescott, there was flash flooding of creeks and washes. A woman drowned when the vehicle in which she was a passenger became stranded in rain-swollen Granite Creek.								
Phoenix, Glendale Maricopa County	12	1820MST			0	0	4	0	Hail
	A severe thunderstorm produced 3/4 inch size hail over west and northwest Phoenix and Glendale.								
3 ARKANSAS									
Southwest Arkansas	03	2100 CST - Midnight			0	0	?	0	Thunderstorms
	Thunderstorms moved into southwest Arkansas from Oklahoma. Heavy rain and 1 inch hail reported at Horatio, Sevier County. Wind damage to a barn and 1 car in Pine Ridge, Montgomery County.								
Baxter County	16	0130CST							Funnel Cloud
	Funnel cloud sighted 3.5 miles southwest of Mountain Home.								
Pulaski County	17	unknown			0	0	4	0	Rain, flooding
	Heavy rains washed out Ironton Cutoff Road bridge. Localized flooding also reported along creeks and low lying areas in the county.								
Columbia County	20	1830CST			0	0	4	0	Wind
	Strong winds damaged roofs on 4 residences, cut power lines, and damaged trees on the west side of Magnolia.								
Lincoln County	20	2035CST short narrow			0	0	0	0	Tornado (F0)
	Tugboat operator reported seeing one tornado near Lock and Dam #3, 25 miles south-southwest of Stuttgart.								
Lincoln County	20	2035CST							Funnel Cloud
	Tugboat operator also reported seeing a funnel cloud with the above tornado.								
4 CALIFORNIA, Northern									
Selma (Fresno County)	28	1700PST	5	20	0	1	4	4	Tornado (F0)
	The tornado moved southeast along Highway 99. There were three touchdowns. Damage was done to a roof and to a few trees and overturned some boxes of fruit.								
Fowler, Selma and Reedley (Fresno County)	28	1600PST			0	0	4	8	Hail
	The small hail damaged grapes, wheat, almonds and walnuts.								
San Francisco, Lake Merced (San Francisco County)	29	1105PST	0	0	0	0	0	0	Waterspout
	Touchdown of the (waterspout) on the lake stirred up the water.								
Livermore (Alameda County)	29	1525PST	0	0	0	0	4	0	Tornado (F1)
	The brief touchdown of the tornado overturned two cars.								
San Jose and Gilroy (Santa Clara County)	29	1600PST 1630PST			0	0	4	0	Thunderstorm Winds
	There was damage to a roof and fence in San Jose, and to a mobile home in Gilroy.								
CALIFORNIA, Northern									
Sierra Nevada (Northern and Central CA)	29	2100PST 31 2400PST			7	15	7	0	Heavy snow, Avalanche
	Five to nine feet of snow fell in the Sierra Nevada. There was a large avalanche at the ski resort of Alpine Meadows.								
San Francisco Bay Counties	30	0900PST 31 2400PST			0	2	6	3	Flooding
	Heavy rain combined with high tides to cause flooding in low-lying areas around the Bay, especially in the cities of San Jose, Santa Clara and Richmond.								
4 CALIFORNIA, Southern									
Mono County	1st	Early Mrg.			0	0	?	0	High Winds
	80 MPH winds downed power line and caused power outages at Mammoth, Ca.								
Los Angeles County	14	1053PST			0	0	0	0	Funnel Cloud
	Funnel cloud observed over Downtown Los Angeles by an off duty pilot.								
San Diego County	16-18				1	0	?	?	Heavy Rains and High Winds
	A powerful 2 day storm dumped 2 to 4 inches of rain on San Diego County. Local flooding closed many streets, numerous accidents resulted from slippery streets. Strong winds accompanying the storm knocked down power lines, uprooted trees and tore small boats from their moorings. A single engine plane flying into Gillespie Field crashed and burned short of the landing, killing the pilot.								
	In a spectacular rescue by Marine Corps helicopter, a 25 yrs. old woman from Fallbrook was rescued from her car as she was swept 250 feet down the Santa Margarita River.								
Los Angeles County	17	1600PST			0	0	?	0	Strong Winds
	Newport Harbormaster reported winds gusts 50 to 60 mph.								
San Diego County	17	1715PST			0	0	?	0	Tornado (F1)
	A twister touched down on a home on Leland Street in Loma Portal, leaving a trail of destruction. The twister ripped off the roof and left the home and back yard in shambles. Surrounding neighbors suffered loss of T.V. antennas, windows and tree limbs.								
Los Angeles County	18	1655PST			0	0	0	0	Funnel Cloud
	Funnel cloud observed by 3 UCLA students 10 miles WSW of Campus. Cloud touched in Pacific Ocean briefly.								
Ventura County	28	1414-1420PST			0	0	0	0	Funnel Cloud
	Point Mugu weather station observed funnel cloud in vicinity.								
Los Angeles County	28	1610PST			0	0	0	0	Funnel Cloud
	Funnel cloud observed offshore by Santa Monica Tower personnel.								
Los Angeles County	29	2030PST			0	0	?	?	Tornado (F1)
	An apparent twister swept through San Gabriel in the evening, leaving a two-block wide area of uprooted trees, downed store signs, substantial roof damage, fences blown down, power poles downed, and small orchards (avocado) partially destroyed.								

STORM DATA AND UNUSUAL WEATHER PHENOMENA

MARCH 1982

PLACE	DATE	TIME - LOCAL STANDARD	LENGTH OF PATH (MILES)	WIDTH OF PATH (YARDS)	NO. OF PERSONS		ESTIMATED DAMAGE		CHARACTER OF STORM
					KILLED	INJURED	PROPERTY	CROPS	

PLACE	DATE	TIME - LOCAL STANDARD	LENGTH OF PATH (MILES)	WIDTH OF PATH (YARDS)	NO. OF PERSONS		ESTIMATED DAMAGE		CHARACTER OF STORM
					KILLED	INJURED	PROPERTY	CROPS	

5 COLORADO

Mountains and northeast	3-5									0 0 3 0 Heavy snow, Lightning 8 to 16 inches of snow fell over a three day period in the Colorado mountains, and brief heavy snow accompanied by a few thunderstorms hit portions of the east on the 4th. That night, lightning struck a house in Arvada, just northwest of Denver, setting it afire. The thunderstorm produced very heavy snow for a brief time; 5 inches fell in a 2 hour period in Wheat Ridge, another Denver suburb. The snow blitz made roads very icy and slick, causing a 59 car pileup on Interstate 70 in north Denver. The snow extended south to Colorado Springs, where 8 1/2 inches fell on the 4th and 5th.
Northeastern Foothills	9 morning									0 0 3 0 High winds Strong Chinook winds buffeted the foothills from Boulder north to Fort Collins. The highest gust recorded was 95 mph at Buckhorn Mountain, about 10 miles west of Fort Collins. Gusts of 60 to 90 mph were noted in many other areas. The winds toppled a microwave dish and blew the shell off a camper.
Northeastern Foothills	10 morning									0 0 0 0 High winds Winds gusted to 76 mph at Buckhorn Mountain, with 60 mph recorded on the main campus of Colorado State University in Fort Collins.
Mountains, Northeastern Foothills	12									0 0 3 4 Heavy snow, high winds 12 to 24 inches of new snow buried mountain resorts, while another windstorm hit the foothills from Boulder to Fort Collins. The strongest officially recorded gust was 90 mph in Boulder, with 50 to 80 mph winds at other points north to Fort Collins. A mobile home was blown over, with minor damage at other points. Blowing dust was a problem in rural areas, where the dry, windy conditions have resulted in damage to over 100,000 acres of cropland so far this year.
San Luis Valley	18									0 0 3 0 High winds Winds gusted to 71 mph at Alamosa. A few sheds and campers were damaged at various spots in the valley, and the wind uprooted a few large trees.
Denver	19 aftn									0 0 3 0 High winds Winds reached gusts of 51 mph at Stapleton Airport, and strong gusts at nearby Lowry Air Base caused minor damage to a few mobile homes. Visibility at Stapleton was briefly reduced to 1 mile in blowing dust.
Northeast Foothills	24 aftn									0 0 0 ? High winds A strong cold front roared through eastern Colorado, bringing 60 mph winds to Fort Collins and speeds nearly as high to other locations. The most remarkable feature noted was the huge dust cloud that accompanied the front. The cloud was at least 1000 feet high, rounded on top in the shape of the cold front as it wedged southward. The dust reduced visibilities to less than one mile at many locations as the front passed. The temperature at Fort Collins dropped 20 degrees in 5 minutes when the front went through the city.
Eastern Colorado	29-30									0 0 5 4 High winds Strong winds buffeted all of eastern Colorado, causing all sorts of problems. Wind speeds ranged from 100 mph at Buckhorn Mtn. to 60 mph in Pueblo and Rocky Ford, in southeast Colorado; 90 mph gusts were noted in the Boulder and Longmont areas. Windows were broken and roofs damaged in Colorado Springs, Boulder, Loveland, Fort Collins, and the Denver area; a mobile home was destroyed in Loveland, and a condominium under construction was flattened in Lakewood, a Denver suburb. Minor damage occurred in many other areas. The wind whipped a prairie fire over 2000 acres near Wray, and crops were damaged in southeastern Colorado when wind blew much of the soil into Kansas and Oklahoma.

6 CONNECTICUT

Berlin	12 0615EST									0 1 3 0 Lightning A bolt struck a house, burned out some wiring and slightly injured a switchboard operator as electricity passed through the wires she held.
New Britain	12 0615EST									0 0 3 0 Lightning A T.V. antenna was blown off one house. In another, two holes were blown in the roof. The telephone and some light fixtures were destroyed. At another strike, walls were scorched and blown out. As police departed a building they had just proclaimed safe after some bomb threat calls, lightning struck near the officers. They each thought the building blew up as they left.

7 DELAWARE ————— NONE REPORTED

8 FLORIDA

Pinellas County	06 0100EST	3.0	50	0	0	4	0	0	Tornado (F0) A small tornado skipped through South St. Petersburg overturning four airplanes and damaging several others at Albert Whitted Airport. A number of houses had roof damage and there was extensive tree and power line damage along the path. Damage was estimated to be \$50,000.
Dade County	06 0245EST	10.0	100	0	4	5	0	0	Tornado (F1) A tornado moved on a long path through the southwest portion of Greater Miami damaging about 100 homes, hundreds of cars, miles of power lines, and toppling numerous large trees and signs. Four people received minor injuries. Many more injuries would have occurred if the tornado had struck during the day. Total estimated damage was \$500,000.
Highlands County	06 0500EST	1.0	100	0	0	5	0	0	Tornado (F1) A tornado struck the Leisure Lakes Subdivision, located between Sebring and Lake Placid, damaging about 10 homes. One house was declared a total loss. Damage was estimated to be \$80,000.
Volusia County	07 0310EST	0.5	50	0	0	4	0	0	Tornado (F1) A small tornado struck a large ranch near Daleon Springs causing heavy damage to the stables. About 40 large trees were uprooted. Total damage was estimated to be nearly \$50,000.
Hamilton and Madison Counties	25 2100EST			0	0	4	6	6	Hail and windstorm A severe hail storm moved through Hamilton and Madison Counties causing damage to peach trees and tobacco crops. High winds piled hailstones in drifts up to 2 feet. First estimates were up to \$750,000 loss to the peach crop and 85 percent of the tobacco crop was destroyed. Total crop damage will probably be over one million dollars. Wind overturned several mobile homes with damage less than \$10,000.
Martin and Palm Beach Counties	28-29, 1200-1200 EST			13	0	6	0	0	Heavy rains, rough seas and high wind Very heavy rains and high winds struck the Florida Gold Coast around the Palm Beach area. Lantana, a suburb of Palm Beach, measured 16 inches of rain in 24 hours. High seas sunk a Haitian freighter and drowned 11 people. Two other people were killed as a result of the storm. Hundreds of homes and cars were flooded. The Lake Worth Pier sustained heavy damage. The total storm damage was estimated near \$250,000.
Palm Beach County	29 0130EST	0.5	50	0	1	4	0	0	Tornado (F1) A small tornado touched down in Boynton Beach with one house sustaining heavy damage and a number of others structural damage. One man had minor injuries. Total damage was estimated \$25,000.

9 GEORGIA

Fulton and DeKalb Counties	17 1305EST	0.1	10	0	0	4	0	0	Tornado (F0) A tornado touched down briefly at 1256 Moreland Avenue in Atlanta. Roofing tiles and some drain pipes were torn from a dentist's office building. Two cars and a restaurant across the street were also slightly damaged.
Chatham County	17 1804EST			0	0	0	0	0	Hail Golf ball size hail fell at the Oglethorpe Mall in Savannah.
Harris County	21 1725EST			0	0	2	0	0	Hail Golf ball size hail broke a few windows just south of Pine Mountain and also in Hamilton and Cataula.
Muscogee County	21 1800EST			0	0	0	0	0	Hail Hail up to one inch in diameter fell in the southern part of Columbus.
Talbot County	21 1805EST			0	0	0	0	0	Hail Golf ball size hail fell in Talbotton.

STORM DATA AND UNUSUAL WEATHER PHENOMENA

MARCH 1982

PLACE	DATE	TIME - LOCAL STANDARD	LENGTH OF PATH (MILES)	WIDTH OF PATH (YARDS)	NO. OF PERSONS		ESTIMATED ¹ DAMAGE		CHARACTER OF STORM
					KILLED	INJURED	PROPERTY	CROPS	
— GEORGIA —									
Bibb, Peach, Crawford, and Houston Counties	21	1912-1937EST			0	7	6	0	Wind, Hail, Funnel Cloud
	<p>Strong thunderstorm winds gusted to 69 mph at the Macon Airport, heavily damaging the Zentop Hanger and causing minor injuries to 5 people. Three Boeing 727 and two Lockheed Electra aircraft were extensively damaged. The storms also destroyed several mobile homes in the 4-county area, causing minor injuries to at least 2 people. Several homes suffered roof damage and several trees were downed. A funnel cloud was observed near Byron in Peach County; golf ball size hail was also reported in the area and a radio tower in Byron was blown down.</p>								
Grady County	25	1930EST			0	0	4	?	Wind, Hail
	<p>Strong thunderstorm winds heavily damaged two barns and a garage near US84 between Cairo and Whigham. Golf ball size hail covered the ground near Whigham. Several trees and power lines were downed.</p>								
Brooks County	25	2025EST			0	0	3	0	Wind
	<p>Strong thunderstorm winds blew down several trees, downed a few power lines, and destroyed the office of the Quitman Minnow Farm just south of Quitman.</p>								
Thomas County	25	2100EST			0	0	4	0	Wind
	<p>Strong thunderstorm winds downed several trees and power lines. A felling tree damaged a home in Thomasville.</p>								
10 IDAHO									
Benewah, Nez Perce, Ada, Canyon, Payette, Washington Counties	18	1100 - 1430 MST					5	0	High Winds
	<p>Winds of 50 to 60 m.p.h., associated with a strong cold front, moved across northern and southwestern Idaho. Steel framing for an outside arena under construction was blown down in the Lewiston area, Nez Perce County. Damage estimated at \$50,000. A light plane at the Caldwell Municipal Airport, Canyon County, was completely demolished. Numerous telephone poles were downed.</p>								
11 ILLINOIS									
McDonough County	12	1912CST	?	?	0	0	4	0	Tornado (F2)
	<p>A tornado briefly touched down 10 miles south of Macomb destroying an old barn.</p>								
Entire state	12	1845-2200CST			0	0	5	0	Wind
	<p>Thunderstorms, some severe, moved across the entire state during the evening hours. Strong winds caused damage to buildings and trees. At 1850 a 57 knot gust was reported at Quincy, Adams County. A trailer was damaged 5 miles west-southwest of Moline in Rock Island County at 2030. At 2130 3 farm buildings lost their roofs due to high winds, 20 miles east of Geneseo in Henry County. Some windows were blown out in scattered areas of the state.</p>								
Southern portions	16	1000-2130CST			0	0	3	0	Wind & Hail
	<p>Thunderstorms with gusty winds and large hail moved over the southern sections of the state causing some damage. During the morning hours, strong winds damaged the fairground grandstand in Jacksonville in Morgan County. At 1830 1.75 inch hail was reported at Petersburg, Menard County. Wind gusts of from 50 to 60 knots were reported throughout the area and at 2020 the highest wind gust of 61 knots was reported in Sparta in Randolph County.</p>								
Northern sections	30	1030-2100CST			0	0	5	?	Wind
	<p>During the morning hours high winds caused damage to buildings and farm buildings in northeast Illinois. In a shopping center in Crystal Lake, McHenry County, windows of cars and stores were blown out. The estimated damage was \$150,000. In the Pine View subdivision of Aurora, Kane County, a home had its roof blown off. Kankakee County, near Kankakee, also suffered damage.</p>								
— ILLINOIS —									
Ina, Jefferson County	30	2030CST	0.8	100	0	4	6	0	Tornado (F2)
	<p>A tornado entered the northwest part of town traveling 0.8 of a mile in a north-northeast direction. Four homes and 5 mobile homes were destroyed. Sixteen homes and many other mobile homes were damaged. Two large storage tanks that were waiting to be installed were carried one block. Four persons were injured and the estimated damage was less than one million dollars.</p>								
Aden, Hamilton	30	2115CST	?	?	0	0	5	0	Tornado (F2)
	<p>At 2115 a tornado briefly touched down destroying a house and barn. Damage was estimated at \$50,000 to \$100,000.</p>								
12 INDIANA									
Northern and West Central Indiana	01	--	--	--	?	8	?	?	Flooding
	<p>Throughout the month After a year of record snowfall on top of a solidly frozen ground, the rapid melting of snow resulted in flooding along the rivers in northern and west central Indiana. These rivers remained above flood stage for much of the month. Most notable was the flooding which occurred along the Saint Joseph, Maumee and Saint Mary's rivers which flow through the city of Fort Wayne in Allen County. Here the rivers rose to the top of the levees. Large numbers of sandbags were used to reinforce the levees protecting the city. Other flooding occurred along the Kankakee river in northwest Indiana as well as the area boarding the Wabash River in West Central Indiana, where large sections of farm fields were under water.</p>								
South of Pendleton Madison County	13	0200EST	--	--	0	0	5	0	Thunderstorm winds
	<p>Strong winds produced as a thunderstorm moved through Madison picked up a unconnected pick-up truck camper and dropped it on the roof of a house. The house was a total loss.</p>								
4 miles south of Greenfield in Hancock County	13	0230EST	--	--	0	0	3	0	Thunderstorm winds
	<p>Strong winds produced by a thunderstorm lifted the roof off a large building.</p>								
North side of Ossian Wells County	16	1620EST	2	16	0	0	5	0	Tornado (F1)
	<p>The tornado touchdown adjacent to state road 1 on the north side of Ossian and travel for about 2 miles eastward touching down at several other points. No fatalities occurred as area residents found shelter in basements. Structural damage included one home and barn destroyed as well as numerous out building. The tornado crossed into Adams County where it removed the roofs off a home and a nearby barn on state road 27 & 33. This was the last touch down point.</p>								
Saint Wendel, Posey & Vanderburgh County line	19	2245EST	--	--	0	0	?	0	Winds
	<p>Trees and power lines downed by winds in excess of 60 miles an hour.</p>								
Eureka, Spencer County	20	1730EST	--	--	0	0	0	0	Hail
	<p>Hail 1 inch in diameter reported.</p>								
6 miles north of Vincennes, Knox County	20	1800EST	--	--	0	0	0	0	Hail
	<p>Golf ball size hail reported.</p>								
Owensville, Gibson County	20	1835EST	--	--	0	0	0	0	Hail
	<p>Hail 1 inch in diameter reported.</p>								
2 miles east Poseyville, Posey County	20	1910EST	--	--	0	0	0	0	Hail
	<p>3/4 inch hail reported</p>								
6 miles north of Laporte, Laporte County	30	1629EST	--	--	0	0	0	0	Funnel
	<p>Funnel cloud reported but no touch down.</p>								
Roselawn, Newton Counties	30	1654EST	--	--	0	0	0	0	Hail
	<p>Quarter inch size hail reported.</p>								

STORM DATA AND UNUSUAL WEATHER PHENOMENA

MARCH 1982

PLACE	DATE	TIME - LOCAL STANDARD	LENGTH OF PATH (MILES)	WIDTH OF PATH (YARDS)	NO. OF PERSONS		ESTIMATED DAMAGE		CHARACTER OF STORM
					KILLED	INJURED	PROPERTY	CROPS	

PLACE	DATE	TIME - LOCAL STANDARD	LENGTH OF PATH (MILES)	WIDTH OF PATH (YARDS)	NO. OF PERSONS		ESTIMATED DAMAGE		CHARACTER OF STORM
					KILLED	INJURED	PROPERTY	CROPS	

INDIANA

Southern Tippecanoe County	30	1836EST	--	--	0	0	3	0	Thunderstorm winds
Polebarn and utility post blown down as well as damage to many area roofs by winds in excess of 50 miles an hour.									
Wabash County	30	1926EST	--	--	0	0	3	0	Thunderstorm winds
A barn roof blown off 1 mile east of state road 13 and 1/2 mile north of state road 16.									
4 miles north of Columbus, Bartholomew County	30	2325EST	--	--	0	0	?	0	Thunderstorm winds
50 to 60 mile an hour winds reported uprooting trees and blowing down power lines.									
Indianapolis, Marion County	31	0910Est	--	--	0	0	0	0	Hail
Hail ranging from 1/4 to 1 inch reported on the north and east side of the city. Hail briefly covered the ground in some sections.									

13 IOWA

Blockton, Eastern Taylor County	19	0530CST	2	100	0	0	3	0	Tornado (F1)
A barn 50 feet from a farm house was levelled. Boards from the barn were driven into the roof and sides of the house and windows were broken out of the north side of the house. Two tractors and a pick-up truck were damaged. Two other barns on other farmsteads were damaged as were farm elevators. A small shed was demolished. Power lines were downed.									
All of Iowa	30	0800-1800CST			0	1	5	0	High Wind
Strong winds gusting to 60-80 MPH buffeted the State. A Police Officer was injured when struck by a portion of a skywalk roof in Cedar Rapids. The strong winds blew roofs and siding off buildings and knocked down traffic signals, lamp posts and stop signs. A Cessna Skyhawk Airplane was flipped onto its back while the pilot was taxiing it after landing at the Des Moines Airport. The pilot was uninjured. Two light aircraft parked at the Fort Dodge Airport were damaged when one plane was blown loose from its moorings and landed on the other. Power line poles were blown down near Camp Dodge. There were brief power outages scattered about the State caused by power lines "galloping" in the wind and coming in contact with one another. In Davenport, two small billboards and a section of a brick wall at a movie theatre toppled onto an automobile parked along side the building damaging it. A semi-trailer truck was flipped on its side in Des Moines. The winds tore off parts of the gymnasium roof at the Waverly High School and blew the roof off a car wash in that city. Mobile homes suffered roof and skirt damage across the State. Large trees were uprooted. Automobiles were destroyed when trees fell on them.									

14 KANSAS

Medicine Lodge, Barber County	15	1555CST	0	0	0	0	0	0	Hail
Hail fell for 5 minutes in Medicine Lodge with a few stones as large as 1 inch in diameter.									
Southeast Kansas	15	1600-1830CST			0	0	5	0	Wind, Hail
A severe thunderstorm raced from near Wellington to the Missouri border east of Pleasanton. Strong winds with the storm left scattered damage in the following counties: Cowley, Elk, Greenwood, Woodson, Coffey, Allen, Linn and Anderson. The storm also dropped at least 2 tornadoes which are listed below. Golf ball size hail and wind damage occurred near Atlanta around 1600, wind damaged some buildings near Severy at 1630, outbuildings were damaged 12 miles southwest of Burlington at 1730, a house and barn were damaged near Westphalia just before 1800, and golf ball size hail and minor wind damage occurred in Blue Mound around 1800.									
Marion County	15	1620CST			0	0	4	0	Wind, Hail
Strong thunderstorm winds toppled more than 20 power poles 7 miles south of Marion. Golf ball size hail also fell in the same area.									
Rago, Kingman County	15	1636CST			0	0	0	0	Hail
Golf ball size hail fell for a short time at Rago.									
Fall River Reservoir, Greenwood County	15	1649CST	1	300	0	0	6	0	Tornado (F2)
A tornado dropped down on the west side of Fall River Reservoir. Twenty to twenty-five cabins and mobile homes sustained damage.									
Woodson and Allen Counties	15	1700-1755CST	30	500	0	0	6	0	Tornado (F2)
A tornado set down near the State Lake 8 miles southwest of Yates Center and skipped along a path northeast to 7 miles north of Iola where it lifted. Homes and farms sustained damage along the path. The Knights of Columbus Hall near Piqua was damaged severely at 1730.									

KANSAS

Maize, Sedgwick County	15	1730CST	0	0	0	0	0	0	Hail
Hail as large as 2-1/2 inches in diameter fell briefly at Maize.									
Sedgwick County	15	1745-1815CST			0	0	0	0	Hail
Golf ball size hail fell 5 miles south of Haysville and 2 miles southeast of Derby.									
Montgomery, Labette, Cherokee and Crawford Counties	15	1800-2015CST			0	1	5	0	Wind, Lightning
A series of severe thunderstorms crossed the southeast corner of Kansas spawning at least 6 tornadoes (listed below) and causing a good deal of wind damage. Farm buildings were damaged just north of Coffeyville about 1845, some barns were destroyed near Montana in northeast Labette County around 1900, and the roof of a nursing home on the south side of Pittsburg was blown off at 1920. Other, more minor, wind damage occurred throughout the 4 counties. A sheriff's dispatcher at Girard was injured when lightning struck the radio she was using about 2000.									
Tyro, Montgomery County	15	1815-1835CST	6	300	1	1	6	0	Tornado (F3)
A tornado touched down just southwest of Tyro and took a track east northeast across the southeast edge of the town to a point 4 miles east and 1 mile north of Tyro where it lifted. One death and one injury resulted when a mobile home was destroyed 1 mile east of Tyro.									
Montgomery County	15	1840CST	short narrow		0	0	4	0	Tornado (F1)
A tornado touched down briefly 7 miles north of Coffeyville and damaged a farmstead.									
Labette and Crawford Counties	15	1910CST	14	700	0	3	5	0	Tornado (F2)
A tornado dropped down just southwest of Strauss in the northeast corner of Labette County and moved northeast to 3 miles south of Girard. Farm homes and outbuildings sustained damage along the path. Three people were injured when 2 mobile homes were destroyed 2 miles northwest of McCune at 1930.									
Labette and Cherokee Counties	15	1940-2040CST	28	300	1	6	6	0	Tornado (F3)
A tornado set down first near the Oklahoma border south of Valeda and took a northeast path to just northeast of Hallowell before it lifted. Farm homes and buildings were damaged all along the path. Six mobile homes at a park 1-1/2 miles east of Edna were overturned at 2004. One fatality (in a mobile home) and 6 injuries resulted when Hallowell was hit about 2030. Three homes in Hallowell were destroyed and another 45 damaged.									
Crawford County	15	1945CST	9	700	1	8	6	0	Tornado (F3)
A tornado set down 4 miles east of Girard and moved into Missouri after striking Mulberry. Several homes on the south side of Arma were moved off their foundations around 1945. One person in a mobile home was killed and 8 others were injured when the tornado struck Mulberry about 1955. Fifty houses were destroyed in Mulberry and another 90 damaged. A grocery store south of the tornado track 0.5 miles was crushed by a downburst wind.									
Mineral, Cherokee County	15	2017CST	Short Narrow		0	0	0	0	Tornado (F0)
A tornado was sighted briefly near Mineral.									
Opolis, Crawford County	15	2045CST	1	400	0	0	4	0	Tornado (F3)
A tornado touched down just southwest of Opolis and moved northeast into Missouri. A vacant gas station was destroyed in Opolis.									
Liberal, Seward County	18	1926CST	.5	30	0	0	4	0	Tornado (F2)
A tornado dropped down briefly, destroyed a farm home, and damaged some farm buildings 5 miles north and 3 west of Liberal.									
Burdette, Pawnee County	18	2310CST			0	0	0	0	Hail
One inch diameter hail fell for a short time in Burdette.									
Haskell and Gray Counties	18-	2330-0050CST	48	50-100	0	0	5	0	Tornado (F2)
A tornado touched down 2 miles east of Satanta and traversed a path northeast to a point 2 miles northeast of Cimarron. The tornado was on the ground only about 20 percent of the time along the path. Homes, outbuildings, power lines and irrigation systems sustained damage.									
Marshall County	19	0345-0415CST			0	0	5	0	Wind
Strong thunderstorm winds downed 6 power poles 7 miles south of Marysville, demolished a metal garage 4 miles northeast of Frankfort and damaged some farm buildings southeast of Beattie.									
Mitchell County	19	0400-0800CST			0	0	4	0	Rain, Lightning
Thunderstorms moved across Mitchell County and dumped 1 to 3 inches of rain sending small creeks near Tipton and Hunter out of banks. Basements were flooded in several homes. State Highway 181 was closed for a time near Hunter. Three cows were struck by lightning near Hunter and killed, and several head were also drowned in the high water.									
Garden City, Finney County	29	1710-1755CST			0	0	0	0	Wind, Hail
A thunderstorm passed through the city and produced winds measured at 58 mph at the airport at 1712. Hail as large as an inch and a quarter in diameter also fell on parts of the city.									

STORM DATA AND UNUSUAL WEATHER PHENOMENA

MARCH 1982

PLACE	DATE	TIME - LOCAL STANDARD	LENGTH OF PATH (MILES)	WIDTH OF PATH (YARDS)	NO. OF PERSONS		ESTIMATED ¹ DAMAGE		CHARACTER OF STORM
					KILLED	INJURED	PROPERTY	CROPS	
— KANSAS									
Northwest Kansas	29	Afternoon & Evening			0	0	6	0	Wind
		Strong winds caused scattered damage across a good share of the northwest quarter of the state. Windows were shattered, power lines downed, tree limbs broken, and roofs were damaged. The roof of a large barn near Goodland was completely removed. A semi truck was blown over near Oakley.							
15 KENTUCKY									
Central and East Kentucky Counties of McGoffin, Taylor, Casey, Rockcastle, Perry, Floyd	16	Evening			0	0	4	3	Severe Thunderstorm
		Severe thunderstorms produced widespread reports of golf ball size hail over several central and eastern Kentucky counties. Several homes and cars were damaged due to large hail while heavy rains produced local urban flooding.							
Jessamine, Clark Powell, Menifee, Morgan	16	1345EST			0	2	5	3	Tornado (F1), Severe Thunderstorm
		A small scale tornado intermittently dropped out of a severe thunderstorm as it moved east from Clark County to Morgan County, apparently the tornado touched down first near Tripp in Clark County Dam across Hidden Valley and Virden Ridge, went through west bend and on to the Black Creek area. Clark and Powell county were hardest hit as 4 homes and 4 mobile homes were destroyed as well as many outbuildings. As the storm continued to move east at 50 miles an hour...severe thunderstorm winds were reported over Morgan and Menifee counties with several indications of tornado damage in these areas as well. FPP 121							
Most of the State	20	Evening			0	15	7	5	Severe Thunderstorm, Hailstorm
		Severe thunderstorms produced golf ball size hail over a large portion of the state as well as producing a major tornado. The heaviest storms were in the area between Paducah and Louisville with other storms in south central Kentucky and southeast sections of the state. Many locations across the state reported buildings destroyed by high winds...and cars damaged by large hail. In Manchester, Kentucky alone hail damage was reported over 1 million dollars. In Louisville golf ball size hail fell in such a large amount that cars were actually stalled in the deep mounds of hail. The same thunderstorms also produced the Shelbyville tornado.							
Jefferson and Shelby Counties	20	1830 to 2030EST	1	30	0	8	7	3	Tornado (F1)
		A funnel cloud was reported at the Louisville airport that moved east and touched down near Interstate 64 close to the Shelby County line. Between the first funnel report and the initial touchdown numerous observations of the funnel cloud were made. After the tornado touched down an areal survey revealed several outbuildings destroyed as well as numerous trees uprooted and power lines downed. A tractor trailer was overturned by the lowering tornado. Substantial damage occurred at the Governors Manor Shopping Center in Shelbyville where several stores were destroyed injuring several people. After it destroyed much of the shopping center it touched down briefly damaging several other houses before returning aloft. The tornado was on the ground for 1 mile, however, its path from initial funnel observation was in the tens of miles. FPP 131							
Southville, Waddy KY, Shelby, Franklin Counties	20	2000EST	15	200	0	0	6	3	Tornado (F2)
		The same thunderstorm that produced the Shelbyville tornado split and formed a tornado that hit Southville. A dozen barns...2 mobile homes and several other buildings were destroyed. For a quarter of a mile along highway 714 not a single house was undamaged. After this point it skipped several miles into Waddy Kentucky where it hit several other homes. From this point on WWS radar had a definite and clear hook echo that it followed several more miles before it lifted up again. FPP 231							
Barren and Metcalf Counties	25	Evening			0	0	2	1	Severe Thunderstorms
		Severe thunderstorms produced 1 inch hail in the Bowling Green area.							
16 LOUISIANA									
Evangeline, Lafayette, St. Landry Parishes	25	1830 to 2000 CST			0	0	1	?	Severe Thunderstorm
		An isolated, very heavy thunderstorm developed near the Ville Platte community in Evangaline Parish about 1830CST and moved south about 25 mph through sunset, in St. Landry Parish to Carencro in Lafayette Parish where it dissipated. Heavy rains caused urban street flooding and strong, gusty winds damaged trees and power lines over the path of the storm. Golf ball sized hail was reported near Carencro by a television station and by the sheriff's office							
Alexandria, Rapides Parish	30	2000CST			0	0	1	0	Heavy rain
		A band of thunderstorms across central Louisiana caused extensive street flooding during heavy rain. Pea-size hail also fell in the Alexandria vicinity with little damage.							
North Washington Parish	31	0045CST	12	7	0	0	4	0	Tornado (F1)
		A small tornado touched down in north Washington Parish shortly after midnight blowing a tow truck and the truck and horse van it was pulling about 10 yards down the road. A sheriff's car was also blown off the road. The tornado moved east about 12 miles through sparsely populated farm country with minor damage to utility poles and trees. Just before it lifted back to the parent cloud the tornado damaged a barn and blew two mobile homes off their blocks and overturned a third heavily damaging it. The path extended from near the Hackley community east to State Line and returned to the clouds just west of Angie where eight poles and a major electric transmission line were blown down.							
17 MAINE									
West Bath, Sagadahoc County	5	2000EST			0	0	4	0	Snow Loads
		The roof of Bath Industrial Sales, Inc. collapsed under the weight of ice and snow accumulated from storms this winter. An estimated 37 tons of snow buried 3600 square feet of showroom.							
18 MARYLAND and D.C.									
Garrett County	6	1900EST-2100EST			0	0	0	0	Glaze
		Freezing rain caused 12-vehicle pileup on U.S. Route 48 on Big Savage Mountain, necessitating the closing of the highway until it could be cleared and salted. Route 40, in the same general area, was also closed for awhile due to hazardous conditions.							
Western Maryland	7				0	0	0	0	Snow
		In the Hagerstown area rain that began early in the morning changed-over in mid-morning, bringing 4 to 6 inches of late-season snow. Farther to the west, where precipitation was all frozen, a 9-inch snowfall was measured in Garrett County. The storm ended during the evening hours.							
		NOTE...Winter of 1981-82... During the months from December to March, ice formation on Chesapeake Bay and tributaries took a heavy toll upon various navigational aids. U.S. Coast Guard and personnel from the Maryland Department of Natural Resources were in the process of replacing hundreds of beacon lights, buoys and other channel or underwater hazard markers destroyed or damaged by massive ice floes. Estimates placed damage in the upper range of Category 5...possibly into Category 6. Even so...one expert said it did not compare with the winter of 1976-77.							
19 MASSACHUSETTS ————— NONE REPORTED									

STORM DATA AND UNUSUAL WEATHER PHENOMENA

MARCH 1982

PLACE	DATE	TIME - LOCAL STANDARD	LENGTH OF PATH (MILES)	WIDTH OF PATH (YARDS)	NO. OF PERSONS		ESTIMATED DAMAGE		CHARACTER OF STORM
					KILLED	INJURED	PROPERTY	CROPS	
20 MICHIGAN									
Richville, Tuscola County	13	Early				5			Lightning
Segments of chimney split by lightning crashed through roof of school.									
Entire state	13	All day				6			Wind
Gusts measured to 50 mph at Detroit, 61 mph at Grand Rapids, 75 mph at Iron Mountain. Many buildings wholly or partially unroofed. Trees, signs, and power lines down. Radio tower down at Houghton. Aircraft hangar destroyed at Owosso. Chimney fell on car at Jackson.									
Area south of Ludington and Harbor Beach	1400-30	2100 EST				6			Thunderstorms
Wind gusts 50 to 75 mph. Three barns, 7 mobile homes flattened. Fifteen buildings unroofed, many others damaged by flying debris. Many trees and power lines down. Some minor lightning damage. "Tornadoes" reported by the public at four scattered locations could not be confirmed.									
21 MINNESOTA									
West Central Minnesota	19, 20		--	--	0	0	0	0	Heavy Snow
Snow moving into Minnesota from the Dakotas Friday, March 19th. Snow increased in intensity Friday night through central Minnesota while rain and freezing rain fell in the south. By Saturday morning 5 inches or more of new snow was located in a band from west central Minnesota to the Duluth area. The greatest amounts were measured at Brown's Valley where 15 inches fell and at Alexandria and Morris where 10 inches fell. The storm caused numerous minor traffic incidents. In the Twin Cities Metropolitan Area two traffic related deaths occurred and power failures occurred due to lightning.									
Southeast Minnesota	30				1	2	5	0	High Winds
Strong winds swept across southeast Minnesota Tuesday, March 30th. Gusts in excess of 90 mph were common and a gust of 102 mph was estimated from Wykoff in Fillmore County. A Houston county farmer died of injuries received when high winds blew a hay rack off a wagon on top of him. The accident occurred about 4:30 p.m. One person was injured near Albert Lea when a house trailer he was working in was blown over. Another injury occurred in Fairmont when a person was struck by a door that blew out of its frame. Reports of property damage from the high winds were numerous. A church steeple was blown over in Winona, a semi-trailer truck was up-ended near Witoka, a barn collapsed near Albert Lea, and several light aircraft were over turned. Reports of damaged roofs, uprooted trees and power outages were common as were reports of roadway and commercial signs blown over and sheds or outbuildings destroyed.									
22 MISSISSIPPI									
Walthall Co.	31	0045CST			0	0	?	?	High Winds
High winds from a thunderstorm blew half of the roof from the high school in Dexter. Other parts of the school received minor wind damage. There were scattered reports of roof damage and trees down in other parts of the county. Some minor flooding was reported as the area received about 4 inches of rain in 24 hours.									
Kemper Co.	31	1230 CST			0	0	?	?	Hail
Golfball size hail fell from a thunderstorm as it passed 3 miles south of De Kalb. Windows were reported broken in some homes and cars.									
Bolivar Co.	31	1430 CST							Funnel Cloud
A funnel cloud was reported in a thunderstorm 4 miles north northwest of Cleveland.									
23 MISSOURI									
Saline	12	1755CST			0	0	3	0	DAMAGING WIND
Winds to 65 miles an hour downed power lines at Marshall.									
Pettis	12	1840CST			0	0	2	0	DAMAGING WIND
Winds 55 to 60 miles an hour downed a few power lines at Green Ridge									
Camden	12	2000CST			0	0	0	0	STRONG WIND
Winds reported 55 to 60 miles an hour.									
Barton Cedar St. Clair	15	1955-2115CST	60	1500	1	0	7	?	TORNADO (F3)
This was the most significant tornado to hit Missouri during this outbreak. The tornado was first on the ground near the Kansas and Missouri border at Mulberry Kansas. The storm stayed on the ground for 46 miles then lifted for a few miles before setting down again. The storm was on the ground in the vicinity of Osceola and lifted again in that area. A woman was killed at Cedar Springs in Cedar County. From the state line in Barton County through Cedar County, the tornado destroyed about 34 homes or buildings and damaged about 70 more. The damage in those two counties was estimated at from 6 to 7 million.									
Cedar	15	2040CST			0	0	3	0	LARGE HAIL and WIND
Hail up to 2 inches in diameter was reported in El Dorado Springs with minor damage to buildings and power lines.									
Jasper	15	2045-2055CST	8	150	0	0	5	?	TORNADO (F3)
A tornado touched down just southeast of Opolis, Kansas and moved into the northwest corner of Jasper County. The tornado lifted just southwest of Nashville. Several buildings including a farm home were damaged. Damage was estimated at \$100,000.									
Benton	15	2140CST			0	0	0	0	LARGE HAIL
Hail to 3/4 inch diameter reported in and around Warsaw.									
Benton	15	2145-2201CST	14	700	0	1	6	?	TORNADO (F3)
A tornado touched down in extreme southwest portion of the county and moved to the east of Warsaw before lifting. Seven trailers were totally or partially destroyed between Warsaw and Bentonville. One house was totally destroyed. There were also two garages damaged and extensive tree damage. The tornado also damaged 3 houses severely and tore walkway away. Two trailers were completely destroyed.									
Morgan	15	Late Evening Around 2230CST	5	600	0	0	5	?	TORNADO (F1) LARGE HAIL
Tornado damaged house and several barns. One barn was completely destroyed and a nearly finished house was destroyed. There was considerable window and tree damage and straw was reported sticking through logs. Hail covered the ground and ranged from marble to baseball size. Most of this was 8 to 9 miles south of Stover on highway 135. People reported hail came first then a roaring like a locomotive after a brief period of deathly quiet.									
Moniteau	15	2230CST (approx)	9	150	0	0	5	?	TORNADO (F1)
Tornado went south of California and was up and down just west of McGirk. The tornado was aloft much of the time and produced scattered damage, mostly to small buildings and sheds. A barn was destroyed 1 mile southwest of highway K.									

STORM DATA AND UNUSUAL WEATHER PHENOMENA

MARCH 1982

PLACE	DATE	TIME - LOCAL STANDARD	LENGTH OF PATH (MILES)	WIDTH OF PATH (YARDS)	NO. OF PERSONS		ESTIMATED DAMAGE		CHARACTER OF STORM
					KILLED	INJURED	PROPERTY	CROPS	
MISSOURI									
Cole	15	2245CST			0	0	5	?	DAMAGING WIND
A severe thunderstorm produced damage around Centertown. One mobile home was blown off its foundation and several barns and sheds were destroyed.									
Boone	15	2252CST			0	0	5	?	DAMAGING WIND
A severe thunderstorm produced scattered damage to southern Boone County. Damage was mostly destroyed and damaged sheds, trees, windows and vehicles. At least two barns were destroyed and several roofs were damaged.									
Callaway	15	2304CST			0	0	3	?	DAMAGING WIND
Winds 50 to 75 miles an hour downed trees at Guthrie.									
Callaway	15	2305-2330CST	24	200	0	0	5	?	TORNADO (F0)
A weak tornado along with damaging straight line winds produced scattered damage across the county. Some of the damage includes a church just west of Fulton, a garage taken off a house 2 miles southwest of Calwood and a shed destroyed near Carrington. Although damage was scattered, a survey by University of Chicago showed a storm track from 38 50 latitude and 91 58 longitude to 39 02 latitude and 91 35 longitude.									
Montgomery	15	Late Evening			0	0	3	0	DAMAGING WIND
Severe thunderstorm produced roof damage to a barn 1 mile south of Wellsville.									
Cole	15	Late Evening			0	0	3	0	DAMAGING WIND
A severe thunderstorm produced wind which broke an airplane loose from its tiedown. The plane flipped on top of another plane.									
LaClede	18	2333-2345CST			0	0	3	0	LARGE HAIL
Hail up to golf ball size reported in and around Lebanon producing minor damage.									
Butler	27	1335CST			0	0	4	0	DAMAGING WIND (DUST DEVIL)
A dust devil hit Poplar Bluff out of the clear skies and severely damaged a gas service station.									
Newton	30	0635CST			0	0	0	0	LARGE HAIL
Hail to one inch diameter at Neosho.									
Lawrence	30	0704CST			0	0	0	0	LARGE HAIL
Hail to 3/4 inch diameter reported by sheriff.									
Lawrence	30	0745CST			0	0	4	0	DAMAGING WIND
Wind and hail damaged buildings and downed power lines in northern portion of the county.									
Greene	30	0815CST			0	0	0	0	LARGE HAIL
Hail to the size of golf ball reported in the county.									
24 MONTANA ————— NONE REPORTED									
25 NEBRASKA									
Southwest, Central and East Central Nebraska	02	Night to 03 Afternoon			0	0	0	0	Heavy Snow
A band of heavy snow about 100 miles wide fell along a line from Grant in southwest Nebraska to Blair in the east. Larger snowfalls included 12 inches at Grant, 10 inches at Ogallala and Silver Creek, 9 inches at Grand Island, 6 inches at Lincoln and Columbus, and 5 inches at Omaha.									
Panhandle, West Central and Southwest Nebraska	12	Morning to Afternoon			0	0	5	5	High Winds
Strong winds following a cold front buffeted the panhandle, west central and southwest Nebraska with gusts as high as 65 m.p.h. Considerable blowing dust and soil erosion was caused by the winds. South of Alliance visibility was reduced to near zero in blowing dust, resulting in auto accidents. One mile east of Benkelman, the roof was blown off a mobile home at 1000 CST. Trees were blown down at Sidney. Gusts to 62 m.p.h. were measured at Scottsbluff at 0615 AM and 60 m.p.h. at North Platte at noon.									
Red Willow County	18	2045CST			0	0	4	0	Lightning
Lightning struck a battery of oil storage tanks 3 miles southwest of Indianola starting a fire, which destroyed 2 tanks and damaged a third.									
Valley County	19	0115CST			0	0	?	0	High Winds
Winds gusted to 60 m.p.h. during a thunderstorm at Ord. No damage reported.									
Richardson County	19	0420CST			0	0	4	0	Damaging Winds
Thunderstorm wind gusts damaged a portable shed and airport hangar at Falls City along with causing some tree damage. In outlying areas, several grain bins and hog feeders were blown over and roof damage to a farm building occurred.									
Dawson County	29	1330CST			0	0	2	0	Lightning
Lightning strike caused a tree to fall on a home at Overton resulting in damage.									
Dundy County	29	1620CST			0	0	0	0	Funnel Cloud
A funnel cloud was reported 15 miles north of Benkelman.									
Lincoln County	29	1705CST			0	0	0	0	Hail
Three-quarter to 1 1/4 inch hail fell 4 miles west of Sutherland. No damage reported.									
Panhandle and Southwest Nebraska	29-	Night to 30 Morning			0	0	5	0	High Winds
Strong winds 50 to 60 m.p.h. gusting as high as 70 m.p.h. caused damage to trees, signs, roofs and small sheds across the panhandle and southwest Nebraska. On the north shore of Lake McConaughy, one mobile home was overturned and destroyed, and two others were damaged in winds estimated to 65 m.p.h. A mobile home was also damaged at Chadron. Peak gusts of 70 m.p.h. were measured at Alliance around 0200 CST.									
Central and Eastern Nebraska	30	Daytime			0	1	6	0	High Winds
Strong winds 45 to 55 m.p.h. gusting to around 70 damaged trees, signs, utility lines, small sheds and roofs. A Superior man was injured as a piece of a building blown off by the wind struck him on a downtown street. Near Ainsworth, a mobile home was overturned. Peak gust of 71 m.p.h. recorded at Norfolk at 1000CST. Damage was reported at Elgin, Ponca and Hartington. Winds were blamed for tipping a chemical tank at Papillion, resulting in some evacuation.									
25 NEVADA ————— NONE REPORTED									

STORM DATA AND UNUSUAL WEATHER PHENOMENA

MARCH 1982

PLACE	DATE	TIME - LOCAL STANDARD	LENGTH OF PATH (MILES)	WIDTH OF PATH (YARDS)	NO. OF PERSONS		ESTIMATED ¹ DAMAGE		CHARACTER OF STORM
					KILLED	INJURED	PROPERTY	CROPS	
27 NEW HAMPSHIRE									
Statewide	7	Night			0	0	4	0	Heavy wet snow
	Heavy wet snow took down power lines in at least a dozen communities affecting thousands around the state. In the south, the Merrimack, Litchfield area had about 2,000 customers without power for around 5 hours. In the north, the Colebrook, Stark and Whitefield area had 300 to 400 households without electricity overnight where snow accumulated up to 12 inches.								
Cillyville, Merrimack County	8	Afternoon			0	0	5	0	Heavy snow loads
	The accumulation of heavy snow and lack of maintenance combined to collapse the roof of a historical covered bridge across the Pleasant Brook in Cillyville. Known as the Bog Bridge, it was built in 1887.								
Northwood, Rockingham County									The wooden roof of a hallway, 50 feet by 12 feet, collapsed at the Northwood Elementary School under the weight of accumulated snow, ice and water from the winter.
28 NEW JERSEY ————— NONE REPORTED									
29 NEW MEXICO									
Near Texico, Curry County	18	2030NST			0	0	?	?	Tornado (F0)
Statewide	29	Day and night			0	1	5	0	Windstorm
	Storms moving rapidly across the State caused 70 to 80 mph winds and damage to cars and light structures. Also, the wind and blowing dust delayed the landing of the space craft at White Sands Missile Range.								
30 NEW YORK, Coastal ————— NONE REPORTED									
30 NEW YORK, Central ————— NO REPORT RECEIVED									
30 NEW YORK, Western									
Sunset Bay, Cattaraugus County	13	- - - - -					5		Flood
	A massive ice jam caused flooding on the mouth of Cattaraugus Creek. More than a hundred homes suffered water damages. About 300 residents had to be evacuated.								
Western & Central New York Counties	31	1600EST					6		Wind & Lightning
	A storm with damaging winds of up to 80 Mph raked the area. Uprooted trees crushed cars parked nearby. Tree limbs were strewn on many streets. Power lines snapped and at least a thousand homes lost electricity for many hours.								
	The strong winds stripped roofs of homes and businesses in Erie, Niagara, and Onondaga Counties, and exposed their contents to heavy rain. Three mobile homes in Avon in Livingston County were toppled down.								
	Other damages to strong winds were recorded in the Finger Lakes and the Southern Tier Counties.								
	Lightning strikes that accompanied the storm set homes on fire in Youngstown in Niagara County and Manlius in Onondaga County.								
31 NORTH CAROLINA									
HAVELOCK, CRAVEN CO.	21	1840EST			0	0	3	0	Wind, Hail
	A severe thunderstorm moved Northeast through Havelock. One small restaurant suffered roof damage. Some windows were broken by large hail. Off duty observer from Cherry Point MCAS reported one inch hail.								
WESTERN AND SOUTHERN NORTH CAROLINA	27-28						0	7	Freeze
	Overnight freeze on the 27 and 28 of March destroyed 50 to 65 percent of the North Carolina apple crop with an estimated dollar loss of \$30 million. Also 95 percent of the North Carolina peach crop was lost with a value of \$10 to \$12 million.								

PLACE	DATE	TIME - LOCAL STANDARD	LENGTH OF PATH (MILES)	WIDTH OF PATH (YARDS)	NO. OF PERSONS		ESTIMATED ¹ DAMAGE		CHARACTER OF STORM
					KILLED	INJURED	PROPERTY	CROPS	
32 NORTH DAKOTA									
Statewide	12				0	0	4	0	High Winds
	13								High winds (54 mph at Bismarck in Burleigh County; 58 mph at Fargo in Cass County; 61 mph at Grand Forks in Grand Forks County, Minot AFB in Ward County and Dickinson in Stark County; and 62 mph at Williston in Williams County and Devils Lake in Ramsey County) occurred across the state. The strong winds knocked over several large signs in Dickinson and one of the signs fell on a parked passenger car. In Stanley (Mountrail County) the strong winds ripped off awnings. Motorists were stranded in the Valley City (Barnes County) area because of zero visibilities caused by blowing snow.
South	19				0	0	3	0	Winter Storm
	20								A winter storm with very heavy snow (7.9 inches at Dickinson in Stark County, 9.3 inches at Fargo in Cass County, 14 inches at Bismarck in Burleigh County, 16 inches at Fort Yates and 25 inches at Selfridge in Sioux County) and winds to 40 mph caused near blizzard conditions. Because of the storm, schools were closed early, workers were sent home early, roads (including I-94 and I-29) became completely or partially blocked, motorists were stranded, plane flights were cancelled, and car accidents occurred. The heavy snow and strong winds caused a quonset hut in Mott (Hettinger County) to collapse.
									A 64 year old Bismarck man collapsed and died while shoveling snow.
South Central					0	0	5	0	Flood
	Spring flooding (caused by melting snow) damaged roads, bridges, culverts and basements, and flooded parks and streets.								
33 OHIO									
Hamilton County	13	0330 EST			0	1	5	0	High Wind Lightning
	A thunderstorm with strong winds did damage in several Cincinnati suburbs. The most severe damage was in Crosby Township where a mobile home was destroyed and a 79 year old occupant was critically injured.								
Lancaster, Fairfield County	13	0510 EST	2	70	0	0	5	0	Tornado (F1)
	A small tornado touched down just north of the city of Lancaster. The funnel destroyed one home and damaged 8 to 10 others. Several trees and utility lines were downed.								
Gallia County	13	0600 EST			0	5	5	0	High Wind
	A thunderstorm with strong winds moved through the small town of Bidwell. Several mobile homes were damaged and 5 members of one family were injured when their mobile home was overturned.								
Northwest Half of State	13-22				3	?	7	C	Flooding
	A combination of snowmelt and rainfall brought about widespread river and lowland flooding in the northwest half of Ohio. Above freezing temperatures melted a heavy snowpack while occasional rains of 1/2 to 1 inch during the period brought major flooding to northwest Ohio. The Tiffin, St. Joseph and Maumee Rivers experienced the worst flooding since 1913. Also, the ice clogged drainage systems in several areas causing flooding of roadways, fields and basements. Ice jams on several streams in the northwest half of the state caused backwater flooding, the most significant of which occurred in the City of Vermilion on the Vermilion River. The waters were slow to recede as rain storms moved through the state every 2 or 3 days. Three people died as a direct result of the flood waters. An elderly lady drown in Putnam County when she drove into an area where flood waters from the Blanchard River covered the road. A nine year old boy drown in Grand Rapids when the Maumee River rose rapidly, stranding him and a companion. A three year old girl drowned in a car that was stranded by flood waters in Dupont, Putnam County.								

STORM DATA AND UNUSUAL WEATHER PHENOMENA

MARCH 1982

PLACE	DATE	TIME - LOCAL STANDARD	LENGTH OF PATH (MILES)	WIDTH OF PATH (YARDS)	NO. OF PERSONS		ESTIMATED ¹ DAMAGE		CHARACTER OF STORM	PLACE	DATE	TIME - LOCAL STANDARD	LENGTH OF PATH (MILES)	WIDTH OF PATH (YARDS)	NO. OF PERSONS		ESTIMATED ¹ DAMAGE		CHARACTER OF STORM
					KILLED	INJURED	PROPERTY	CROPS							KILLED	INJURED	PROPERTY	CROPS	
OHIO										OHIO									
Clinton County	16	1500 EST	-	-	0	0	3	0	Hail	Bellvue and Norwalk, Huron County	31	1145 EST	-	-	0	0	4	0	High Wind and Hail
One inch diameter hail was reported in several sections of the county. Only minor damage was done to buildings and vehicles.										A thunderstorm produced damaging winds and 1 inch diameter hail. Buildings were damaged and several trees and utility lines downed.									
Ross and Fayette Counties	16	1505 EST	-	-	0	0	6	0	Hail and High Wind	Hillsboro, Highland County	31	1230 EST	-	-	0	0	4	0	High Wind
One inch diameter hail and damaging surface winds accompanied a thunderstorm in these counties. Wind damage was minor but the hail inflicted large losses to structures and vehicles. Over \$1 million in insurance claims were filed in the Chillicothe area alone.										Thunderstorm winds damaged several buildings and overturned three mobile homes.									
Allen County	16	1630 EST	-	-	0	0	4	0	Hail and High Wind	Ashland, Richland and Crawford Counties	31	1245-1305 EST	-	-	0	1	5	0	High Winds Lightning
A thunderstorm crossed the county with damaging winds and one inch diameter hail. Winds damaged several buildings and downed trees and utility lines.										Thunderstorms with strong winds moved through these counties damaging buildings and mobile homes, as well as downing trees and utility lines. One mobile home resident was injured when his mobile home was rolled over.									
Vinton County	16	1632 EST	-	-	0	1	5	0	High Wind Lightning	Mt. Vernon, Knox County	31	1250 EST	1	200	0	4	5	0	Tornado (F2)
High winds destroyed several mobile homes and damaged some houses. One man was injured when his truck was overturned by the winds. The most severe damage was done in Hamden and McArthur.										A mini tornado touched down in the City of Mt. Vernon. The storm destroyed 4 homes and heavily damaged 7 others. Four people received minor injuries. The funnel went back into the clouds just before it struck a Mt. Vernon school.									
Middletown, Butler County	16	1700 EST	-	-	0	0	4	0	High Wind	Cuyahoga and Medina Counties	31	1255 EST	-	-	0	1	5	0	High Winds
A thunderstorm with damaging winds moved through Middletown damaging buildings and downing trees and utility lines.										A thunderstorm with strong winds moved through the counties downing trees and utility lines and damaging buildings. Wind gusts at Cleveland Hopkins Airport reached 62 MPH.									
Butkins, Shelby County	16	1705 EST	-	-	0	1	5	0	High Wind	Holmes and Wayne Counties	31	1309-1330 EST	-	-	0	0	4	0	High Wind
Several homes were damaged and mobile homes destroyed as a thunderstorm moved through the county. An elderly resident of a mobile home that was destroyed was critically injured.										Strong winds from a thunderstorm damaged several farm out buildings and did roof damage to some houses. Trees and utility lines were downed.									
Alger and Kenton, Hardin County	16	1710 EST	-	-	0	1	6	0	High Wind Funnel Cloud	Zanesville, Muskingum County	31	1321 EST	-	-	0	0	4	0	High Wind
Several eyewitnesses saw a funnel cloud that never touched the ground. However, strong winds that accompanied the thunderstorm did considerable damage along a path 2 miles wide and 13 miles long. Several homes were severely damaged and mobile homes destroyed. A mobile home resident was injured when the home was toppled off its foundation. Damage estimates exceeded \$500,000.										A thunderstorm moved through the city damaging roofs and downing trees and utility lines. Winds at the airport reached 67 MPH.									
Darke County	16	1715 EST	-	-	0	0	3	0	Hail	East Liverpool, Columbiana County	31	1415 EST	-	-	0	0	4	0	High Wind
A thunderstorm dropped one inch diameter hail throughout the county. Minor damage to vehicles was reported.										Thunderstorm winds damaged several buildings in East Liverpool. Windows were blown out and roofs off. Trees and utility lines were downed in many parts of the city.									
Putnam and Hancock and Seneca Counties	16	1720-1755 EST	-	-	0	0	4	0	Hail	34 OKLAHOMA									
A thunderstorm crossed these counties and dropped 3/4 to 1 inch diameter hail. Over \$5,000 damage was done to windows and vehicles in the three counties.										Altus, Jackson County	14	0030CST	-	-	0	0	4	?	Wind
Franklin County	16	1745 EST	-	-	0	0	4	0	High Wind	Wagoner, Wagoner County	14	0230CST	-	-	0	0	5	?	Lightning
A thunderstorm produced high winds and caused roof damage in the northern part of Franklin County. Several trees and utility lines were downed.										A fire caused by lightning destroyed a machine shop, damage was estimated near \$500,000.									
Madison County	20	2100-2120 EST	-	-	0	0	3	0	Hail	Anadarko, Caddo County	15	1545CST	-	-	0	0	?	?	Hail
Golf ball sized hail fell from a thunderstorm that passed through the county. Damage was minor.										Hail two inches.									
Hamilton County	20	2230 EST	-	-	0	0	3	0	Hail	Minco, Grady County	15	1610CST	-	-	0	0	?	?	Hail
One inch diameter hail fell throughout the county. Damage was minor.										Hail two inches.									
Logan and Champaign Counties	31	1110-1215 EST	-	-	0	1	5	0	High Winds	Oklahoma City, Oklahoma County	15	1614CST	-	-	0	0	?	?	Hail
Thunderstorm with strong winds struck these counties doing considerable structural damage in both counties. Damage was especially heavy in Bellfontaine and Urbana.										Hail one inch in Northwest Oklahoma City.									
										Lindsay, Garvin County	15	1620CST	-	-	0	0	?	?	Hail
										Hail one inch.									
										Konawa, Seminole County	15	1710CST	0.5	10	0	0	4	?	Tornado (F1)
										A tornado damaged one house, several fences, trees, power lines, cars, roofs, and one local radio tower.									

STORM DATA AND UNUSUAL WEATHER PHENOMENA

MARCH 1982

PLACE	DATE	TIME - LOCAL STANDARD	LENGTH OF PATH (MILES)	WIDTH OF PATH (YARDS)	NO. OF PERSONS		ESTIMATED DAMAGE		CHARACTER OF STORM
					KILLED	INJURED	PROPERTY	CROPS	

PLACE	DATE	TIME - LOCAL STANDARD	LENGTH OF PATH (MILES)	WIDTH OF PATH (YARDS)	NO. OF PERSONS		ESTIMATED DAMAGE		CHARACTER OF STORM
					KILLED	INJURED	PROPERTY	CROPS	

OKLAHOMA

Orlando, Logan County	15	1725CST			0	0	5	?	Hail	Softball size hail damaged windows, roofs, trees, etc. One school lost almost all the south facing windows. Damage estimates were expected to go over \$100,000.
Pauls Valley, Garvin County	15	1729CST			0	0	0	0	Funnel Cloud	
Stratford, Garvin County	15	1752CST			0	0	0	0	Funnel Cloud	
Ada, Pontotoc County	15	1757CST	6.0	60	1	36	6	0	Tornado (F3) Hail (2.5 inches)	A tornado struck the City of Ada, most of the damage was confined to a mobile home park. One man was killed and 36 injured at the mobile home park. There were 51 trailers completely destroyed and 17 with extensive damage. One business had major damage and several had minor damage. Total dollar amounts near \$2 million in damage.
Holdenville, Hughes County	15	1800CST	short narrow		0	0	5	0	Tornado (F2)	A tornado destroyed one mobile home and damaged another, also some outbuildings were damaged.
Pawhuska, Osage County	15	1840CST	short narrow		0	1	5	0	Tornado (F2) Hail	A tornado damaged a business, a mobile home, trees, windows, roofs, and one woman was injured by blowing debris.
Wynona, Osage County	15	1845CST	short narrow		0	0	5	0	Tornado (F1)	A tornado damaged a mobile home and some outbuildings.
Copan, Washington County	15	1855CST	short narrow		0	0	?	?	Tornado (F1)	A tornado caused damage to trees and rural areas, no dollar estimate given.
Bartlesville, Washington County	15	1902CST	3.0	170	0	57	7	0	Tornado (F3)	A tornado went through the downtown area, causing extensive damage and numerous minor injuries. Destroyed were 20 businesses, 19 houses, 4 mobile homes, and 2 churches. Major damages were: 21 homes, 19 businesses, 1 mobile home, and 1 church. Minor damages were: 90 homes, 31 businesses, and 1 church. Total dollar damages expected to range from 30 to 40 million.
Marriette, Love County	15	1906CST			0	0	0	0	Funnel Cloud	
Wann, Nowata County	15	1910CST	12.0	170	0	0	5	?	Tornado (F2)	A tornado blew away a gas pump house, damaging a 12 inch high pressure gas line and causing a gas leak. There was also damage to outbuildings, trees, high lines, etc.
Lenapah, Nowata County	15	1915CST	short narrow		0	0	5	?	Tornado (F2)	A tornado damaged several houses four miles south of Lenapah.
Stigler, Haskell County	15	1920CST	short narrow		0	0	5	0	Tornado (F1)	A tornado damaged 8 mobile homes, overturned one, and destroyed a travel trailer.
Bryan's Corner, Beaver County	19	0100CST	5.0	50	0	7	5	?	Tornado (F3) Hail	A tornado, entering Oklahoma from Texas, skipped along a 20 mile path, injuring 7, destroying 2 houses, 2 mobile homes, a dairy barn, irrigation equipment, cars, fences, power lines, etc.

35 OREGON ————— NONE REPORTED

36 PENNSYLVANIA, Eastern

Eastern Pennsylvania	06	1300 EST			0	0	3	0	Glaze, Snow	
	07	2100 EST								Rain began over the area 1 to 4 PM on the 6th and changed to freezing rain and drizzle. This caused icy roadways which resulted in numerous accidents. The ice also coated trees and utility lines resulting in power outages. Precipitation changed to all rain southeast portion, but continued as freezing drizzle much of the remainder of Eastern Pennsylvania. The change-
										over to snow started in the northwest portion 6 to 7 AM on the 7th and spread east and south reaching the southeast portion by 7 to 8 PM. Snow ended most sections by 9 PM with 1 to 2 inches accumulation south and 4 to 10 inches north portions. The slippery roads resulted in numerous accidents with the worst one being in Centre County. In that accident a car and two trucks collided, causing one death. More than ten other tractor trailers skidded off the road trying to avoid the accident and some of them caught fire and burned.
Eastern Pennsylvania	31	1600 EST 2300 EST			0	0	3	0	Wind	Strong wind gust occurred across Eastern Pennsylvania late afternoon and evening, some of the gusts accompanied thunderstorms. Gusts to 60 MPH were reported at Williamsport and Harrisburg.

36 PENNSYLVANIA, Western— NONE REPORTED

37 RHODE ISLAND ————— NONE REPORTED

38 SOUTH CAROLINA

Sumter, S.C. Sumter County	21	2030EST	-	-	0	0	3	0	High Winds/Thunderstorms	Strong winds associated with thunderstorm blew down trees, disrupting power to 1500 homes. Several buildings were damaged.
Statewide	27-28	AM	-	-	0	0	0	7	Freeze/Frost	Freezing weather across northwestern South Carolina on the morning of the 27th and over much of South Carolina on the morning of the 28th severely damaged apples and peaches in northwestern South Carolina with lesser damage to fruit and tender vegetation in eastern South Carolina. The lowest temperature at Walhalla and Long Creek on the morning of the 28th was 19 degrees. The lowest temperature across the Piedmont and northern South Carolina was in the mid-twenties, while minimums along the south coast was mostly in the low 30s.

STORM DATA AND UNUSUAL WEATHER PHENOMENA

MARCH 1982

PLACE	DATE	TIME - LOCAL STANDARD	LENGTH OF PATH (MILES)	WIDTH OF PATH (YARDS)	NO. OF PERSONS		ESTIMATED ¹ DAMAGE		CHARACTER OF STORM	
					KILLED	INJURED	PROPERTY	CROPS		
39 SOUTH DAKOTA										
Northern Lawrence and Southwest Butte Counties.	18	Afternoon			0	0	?	0	Wind	
									Strong winds gusting to 70 mph in Spearfish and Belle Fourche areas overturned a trailer house just north of Belle Fourche. No injuries reported.	
Northern two-thirds of South Dakota	19-20				0	0	?	0	Heavy Snow	
									Widespread heavy, wet snow accumulating to a depth of 10-20 inches and winds gusting to 40 mph blocked numerous roads. Five persons were killed and eight other injured in indirect accidents. Downed powerlines caused isolated power outages. A half dozen newborn calves died of exposure near Lemmon in Perkins County and five percent of the pheasant population was killed in localized areas in Faulk, Edmonds and Brown Counties. The weight of the snow collapsed a canopy of a grocery store in McLaughlin in Corson County, tearing out part of the brick front and breaking windows in the store.	
Swett, Bennett County	29	1650-1700MST	Short Narrow		0	1	?	0	Tornado, F1	
									A tornado briefly touched down at Swett (eleven miles west of Martin) overturning and heavily damaging a mobile home. One woman was injured and another person narrowly escaped injury when he left the trailer seconds before the tornado struck.	
Statewide (except NE)	30	0300CST			0	1	6	?	Wind, Wet Snow	
									Strong winds gusted 50-80 mph. Up to ten inches of wet snow accompanied the winds in the northwest. Powerlines and at least 1500 poles in the northwest were snapped after being coated with 1-6 inches of ice. Damage was heaviest in Perkins County. Numerous trees were broken. Strong winds also snapped powerlines and poles in the southwest and south central parts of the state. One man was injured when his semi-trailer truck was blown off an overpass on Interstate 29 in Lincoln County. Another truck was turned over in Todd County and a third in Melleette County. Residents in north Garretson in Minnehaha County were evacuated when high winds caused four connected locomotives to roll into and tip over a tank car spilling phosphoric acid. A roof was blown off a concession stand at White River in Melleette County and a vacant mobile home overturned northeast of Mission in Todd County. In a delayed reaction, a 72 foot high steel grainbin containing 37,000 bushels of corn collapsed onto adjacent structures on March 31, apparently after being weakened by high winds on March 30.	
40 TENNESSEE										
Memphis, Shelby County	17	0644CST							High winds Winds gusted to 60 miles an hour with a thunderstorm. No reports of any significant damage were made.	
Maryville-Alcoa Area, Blount County	17	1000CST					?		Hail, lightning, heavy rain A thunderstorm produced hail an inch in diameter and heavy rains in the Maryville-Alcoa area. The hail lasted about 3 minutes. Lightning was also blamed for a house fire.	
Sengtown, Sumner County	20	0800CST	.2	40	0	0	0	4	0	Tornado (F0)
									A small tornado touched down at a group of farm buildings near Sengtown. It damaged a silo, demolished a storage barn, took the roof from a calf barn, and did minor damage to a farm house. A funnel was observed by several farmers at a Coop Store on Highway 109, just northwest of Portland.	
Just north of Columbia, Maury County	25	1200CST					?	?	Hail	
									A thunderstorm produced hail up to 3/4 of an inch.	
Wilson County	25	1230CST					?	?	Hail	
									Hail up to 1 and 3/4 of an inch was reported with a thunderstorm.	
Chattanooga, Hamilton County	25	1610CST					?	?	Hail	
									Hail about 3/4 of an inch in diameter was reported with a thunderstorm.	
Bradley County	25	1630CST					?	?	Hail	
									One and three-quarters inch hail was reported with a thunderstorm that moved across the county.	
41 TEXAS, Northern										
Bells, Grayson Co.	3	1835CST			0	0	?	?	Hailstorm	
									One inch diameter hailstones reportedly covered the ground in the Bells area.	
Bonham, Fannin Co.	3	1850CST			0	0	?	?	Hailstorm	
									Storm spotters reported hail ranging up to one inch in diameter in close to Bonham.	
Granbury area, Hood County	5	1350CST	5	?	0	0	0	0	Hailstorm	
									Hail covered the ground from the Granbury area to 5 miles east of Granbury. Some of the hailstones ranged up to golf ball size.	
Mineral Wells, Palo Pinto, County	5	1357CST			0	0	0	0	Hailstorm	
									The Department of Public Safety reported that up to one inch diameter hail completely covered the ground in Mineral Wells.	
Fort Worth, Tarrant County	5	1405CST-1430CST			0	0	0	0	Hailstorm and Lightning	
									Hailstones up to 7/8 of an inch in diameter peppered southwest and west Fort Worth and the City of Benbrook. Small hail reportedly covered the ground in Arlington about 2:30 PM. Lightning set fire to several houses in Fort Worth.	
7N Paris, Lamar Co.	13	2020CST			0	0	?	?	Hailstorm	
									Storm spotters reported one inch diameter hail at Powderly, 7 miles north of Paris.	
Lockett and Vernon areas, Wilbarger County	13	2330CST			0	0	5	0	Windstorm	
									Strong thunderstorm winds caused extensive damage in the Lockett area. Many roofs, sheds, and trees were damaged or destroyed. A church building was unroofed and a 195 foot amateur radio tower downed in Lockett. A nearby barn was demolished. Winds also damaged signs and building roofs in Vernon. Marble size hail accompanied the storm.	
Electra and Burkburnett areas, Wichita County	13-	2345CST-	15	?	0	0	6	4	Hail and Windstorm	
									Severe thunderstorm activity moved into the Electra area about 2345, with damaging hail beginning about midnight. Golf ball size hail fell for 15 minutes in Electra, resulting in several million dollars damage to roofs, cars, fences, and windows. The heaviest damage was on the north side of town, where hail completely covered the ground. High winds compounded the hail problem and almost two inches of rain fell in a short period of time.	
									The storm moved east-northeast, with the last report of golf ball size hail 3 miles west of Burkburnett at 0925 on the 14th.	
Extreme Western Sections of North TX	14	Early Morning							Tornado Outbreak	
									Severe thunderstorms began developing between Abilene and San Angelo shortly after midnight. The thunderstorms produced a series of tornadoes and funnel clouds in a multiple county area between the two cities. Roy Tallant, a truck driver for an Abilene newspaper, observed five "distinct" funnel clouds between 0020 and 0200 on his southward route on Highway 83 between Abilene and Winters, Texas. Tallant said that he saw most of the funnel clouds after driving through extremely heavy rains of short duration. Thus, it appears that the tornadoes were at the south or southwest portions of the individual thunderstorm cells. Tallant mentioned that there was very little hail, but that continuous vivid lightning made spotting the funnels and tornadoes very easy.	
Taylor County	14	0030CST-0130CST	?	?	0	0	4	0	Tornado F1 and Several Funnel Clouds	
									Tallant observed funnel clouds 1 mile north of Tuscola, near Ovalo (3 miles south of Tuscola) and about 3 miles south of Ovalo. One of the funnels, possibly the one north of Tuscola, touched down briefly in Buffalo Gap, causing heavy damage to a restaurant.	
Runnels and Taylor Counties	14	0130CST	10.5	150	0	0	5	0	Tornado F2	
									Tallant witnessed twin funnel clouds several miles south of Bradshaw, which is in extreme southern Taylor County. One of these funnels produced damage from near Highway 83, about 1.5 miles south of the Taylor-Runnels County line (in Runnels County) east-northeastward into Taylor County. The tornado moved to the Lake Lawn area, about 1 mile south of Lawn, Texas, and damaged or destroyed 5 homes and cabins on Lake Lawn.	

STORM DATA AND UNUSUAL WEATHER PHENOMENA

MARCH 1962

PLACE	DATE	TIME - LOCAL STANDARD	LENGTH OF PATH (MILES)	WIDTH OF PATH (YARDS)	NO. OF PERSONS		ESTIMATED DAMAGE ¹		CHARACTER OF STORM
					KILLED	INJURED	PROPERTY	CROPS	
— TEXAS, Northern									
Runnels, Northwest Coleman, Southeast Taylor, and Southwest Callahan Counties	14	0140CST	40.5	175	0	9	6	?	Tornado F3 and Windstorm
	<p>What was apparently one long-track tornado developed 2 miles southwest of Norton, in Runnels County. The tornado destroyed one house and caused heavy ranch damage southwest of Norton, while moving eastward. The twister then curved more toward the northeast, moving toward the southside of Winters. Heavy damage occurred about 1 mile south of Winters where one home and 3 industrial buildings were destroyed. The first 3 injuries occurred here, when a car parked in front of an old drive-in restaurant and its three occupants were swept eastward across Highway 83. Two of the victims were seriously injured whereas the third suffered minor injuries.</p> <p>A fourth man in the same area received minor injuries when his mobile home was devastated along with a drilling rig on the same property.</p> <p>The tornado continued east-northeast, destroying two more rural homes east of Winters, along with a number of barns and extensive farm equipment. Near the intersection of Roads 1770 and 2647, it curved a bit more toward a northeast direction, before passing over a series of hills in northeast Runnels County. The tornado was quite severe as it crossed Highway 382, about 3 miles north of the Highway 1770 intersection. A 25-yard section of asphalt was blown off of the roadway, and powerlines were sheared off. The tornado then entered Coleman County, completely destroying a brick home 1 mile north of Goldsboro at 0215. The four occupants were hospitalized with injuries but all survived. All that remained of the home was a small portion of one wall. A witness in this area stated that the tornado was preceded by brief, heavy rains and marble-size hail. The eyewitness also accurately described the tornado as being pendant from a wall cloud.</p> <p>The twister continued across extreme southeast Taylor County, finally lifting northeast of Oplin, in southwest Callahan County. Several farms or ranches received damage about 1/4 of a mile north of Oplin. The tornado produced over 3 million dollars damage in all four counties. Winds of up to 60 MPH accompanied the parent thunderstorm which produced the tornado.</p>								
Callahan and Eastland Counties	14	0315CST	5	100	0	0	0	0	Tornado F1
	<p>A tornado, witnessed by several storm spotters as a funnel cloud, caused intermittent tree damage from near Cross Plains, in extreme southeast Callahan County to just north of Pioneer in southwest Eastland County.</p>								
Cedar Hill and Duncanville areas, Dallas County	14	0725CST	2	100	0	0	5	0	Tornado F1
	<p>The small tornado developed from what was apparently a thunderstorm which was weakening and showing no radar indications of tornado activity. The tornado destroyed several barns in rural portions of Cedar Hill, then skipped northeastward into the Whispering Hills section of Duncanville. Several dozen properties received damage in Duncanville with 18 homes receiving minor damage and 3 homes sustaining major roof damage. Fortunately, there were no injuries, even though no warning was in effect. Residents heard the roar of the tornado about 1 minute before it struck and took refuge in central rooms and under beds. Several amateur radio spotters observed the tornado, which struck the Duncanville neighborhood at 0729. They described the tornado as being a funnel cloud with debris whirling below it. The tornado occurred to the immediate southwest of a small but very heavy rainshaft.</p>								
Plano, Collins Co.	16	1010CST			0	0	0	0	Funnel Cloud
	<p>The funnel cloud did not touch down.</p>								
New Boston area, Bowie County	21	0005CST-0045CST			0	0	7	?	Hailstorm and 2 Funnel Clouds
	<p>A severe hailstorm moved into the New Boston area about 0030, after producing golf ball size hail in Simms at 0005. Golf ball to baseball size hail caused an estimated \$5.4 million in damages to roofs, windows, mobile homes, and automobiles in New Boston. The storm moved into the Hooks area after striking New Boston, causing additional damage. Two funnel clouds which accompanied the storm in the New Boston area apparently did not touch down.</p>								
Valley Mills, Bosque County	21	0940CST			0	0	?	?	Flash Flood
	<p>Very heavy rains produced minor flash flooding in Valley Mills. The extent of damage was not known.</p>								
10W Marshall, Harrison County	21	1040CST			0	0	?	?	Hailstorm
	<p>One inch diameter hail was reported 10 miles west of Marshall.</p>								
China Springs, McLennan County	21	1135CST			0	0	0	0	Hailstorm
	<p>Three-quarter inch hail apparently produced no damage.</p>								
55 Groesbeck, Limestone County	21	2030CST			0	0	?	?	Hailstorm
	<p>Spotters reported golf ball size hail 5 miles south of Groesbeck.</p>								
41 TEXAS, Southern									
Kerr Co.	22	1540CST			0	0	4	C	Hail
	<p>A cluster of thunderstorms moving eastward over the county intensified in the vicinity of Hunt and Mountain Home dropping 1/2-inch diameter hail eastward to the Kerrville area from 3 to 330 pm. The storms became severe in eastern Kerr County around 360 pm where 3/4-inch diameter hail covered the ground to a depth of 2 inches at Center Point. Gardens and a few vehicles were damaged.</p>								
Kendall Co.	22	1555CST			0	0	?	?	Hail
	<p>A severe thunderstorm moved from near Center Point in Kerr County eastward along the Guadalupe River into Kendall County at 355 pm. Hailstones of 3/4-inch diameter pelted Comfort and rural areas near the river north of Boerne to north of Berghelm. Width of hail swath was quite narrow, mainly 1/2 mile along most of the track. No serious property damage was noted with some crops sustaining losses.</p>								
Comal Co.	22	1615CST			0	0	?	?	Hail
	<p>A swath of 3/4-inch diameter hail continued eastward into Comal County along the Guadalupe River passing near Spring Branch and ending southwest of Canyon Lake. Damages were believed to be minor.</p>								
Bexar Co.	22	1630CST			0	0	?	?	Hail
	<p>A cluster of widely scattered thunderstorms moved eastward over the county from 430 to 530 pm. Many neighborhoods in the San Antonio area reported small hail (pea to marble-size) including areas near Lackland Air Force Base, areas on the northwest side, and across the north side. One storm did drop a brief and localized amount of hailstones that ranged in diameter up to 1 1/2-inch centered near Harry Wurzbach Rd. and Rittiman Rd.</p>								
Jefferson Co.	22	2130CST			0	0	?	0	Wind
	<p>Strong wind gusts emanating from a severe thunderstorm affected Jefferson County beaches and coastal waters from east of High Island to Sabine Pass between 930 and 1030 pm. Center of the storm was just offshore in the Gulf of Mexico and moved eastward parallel to the shore. Damages were unknown.</p>								
Liberty Co.	23	0200CST							Funnel Cloud
	<p>A pilot observed a funnel cloud just northwest of Dayton (about 30 miles east-northeast of Houston Intercontinental Airport) near a very heavy thunderstorm. A ground check by the county sheriff's office revealed no sign it had touched down.</p>								
Matagorda Co.	23	0730CST			0	0	?	?	Hail
	<p>A thunderstorm intensified in the Bay City area as it moved rapidly eastward. The sheriff's office reported a mixture of small to large hail fell briefly in Bay City. Damages, if any, were not reported.</p>								
Harris Co.	29-30				0	0	?	0	Tidal Flooding
Galveston Co.	29-30				0	0	?	0	Tidal Flooding
	<p>The night of Mar. 29 through morning of Mar. 30 tides rose about 3 feet above normal around the innermost shores of Galveston Bay. Very minor flooding of low areas on the north and west sides of the bay were reported, mainly in the Kemah, Seabrook, and Baytown areas. Tides were caused by persistent southeasterly winds 20 to 30 knots across the Gulf of Mexico and upper Texas coast plus the regular astronomical high tide. Bayside roads and low property were affected without significant losses.</p>								
41 TEXAS, Western									
Andrews, Andrews County	13	1825CST			0	3	2	0	Funnels, Hail & Wind
	<p>Several funnels, severe wind and large hail near Andrews. Two mobile homes and a pickup truck were turned on their sides. Two persons injured.</p>								
Moore and Hansford Counties	18	2355CST	70	880	0	5	6	0	Tornado (F4)
	<p>0.5 mile wide tornado, 5 miles southeast of Sunray in Moore County, moved across Hansford County into Oklahoma. Five persons injured. Most damage to farm, ranch buildings and equipment. About one million dollars loss in Hansford County and fifty thousand in Moore County.</p>								
San Angelo, Tom Green County	21	0430CST			0	0	2	0	Hail
	<p>Soft, egg-shaped hail up to 1.75 inches damaged trees and a few buildings.</p>								

STORM DATA AND UNUSUAL WEATHER PHENOMENA

MARCH 1982

PLACE	DATE	TIME - LOCAL STANDARD	LENGTH OF PATH (MILES)	WIDTH OF PATH (YARDS)	NO. OF PERSONS		ESTIMATED DAMAGE		CHARACTER OF STORM
					KILLED	INJURED	PROPERTY	CROPS	
42 UTAH									
Beaver County	29	1214 MST	1/10	UNKWN	0	0	0	0	Tornado (F0)
	<p>A tornado was reported by the observer at Milford, UT. It was located about 16 miles north east of the station, and was moving in a northeast direction. The funnel touched down in sage brush and caused no damage. There were no significant cloud formations in the area at the time. The observer later reported that another similar funnel was spotted later that evening.</p>								
43 VERMONT ————— NO REPORT RECEIVED									
44 VIRGINIA									
Highland County	19-21				0	0	0	0	Rain
	<p>Rainfall occurring late on the 19th and on the 20th totaled between 1 and 2 inches. In the McDowell area rainfall combined with snow melt to cause locally heavy stream runoff. Some minor flooding affected low sections, but no damage was reported.</p>								
Rockingham and Augusta Counties	31	1730EST			0	0	4	0	Wind, Rain
	<p>An intense thunderstorm, occurring in advance of a cold front, swept through the vicinity of Meyers Cave at the boundary of the two counties. Much of the roof of one farmhouse was taken off, and a garage was demolished. Two other farmsteads had damage to buildings and trees during the brief storm. Total damage estimated at near \$50,000.</p>								
45 WASHINGTON ————— NONE REPORTED									
46 WEST VIRGINIA									
Statewide	07				0	0	3	0	Heavy Snow
	<p>A late winter storm dumped very wet and heavy snow across the state with all sections receiving at least a couple inches. Most of the snow fell in the early morning hours before dawn.</p> <p>The greatest accumulations were in the northern mountains with 10 inches at Coopers Rock in Preston county and 8 inches at Canaan Valley and Snowshoe. Six inches fell at Charleston, Richwood, Logan and Elkins.</p> <p>The wet snow pulled down power lines and damaged trees. At least 15,000 homes lost power. Needless to say, travelling was very hazardous with numerous accidents.</p>								
Boone county	16	1630EST			0	0	0	0	Hail
	<p>Golf ball size hail fell near Barrett in southern Boone county.</p>								
Jackson county	16	1745EST			0	0	3	0	Thunderstorm Winds
	<p>A thunderstorm struck the town of Evans with strong winds ripping shingles, siding and awnings from homes. Trees were uprooted and many windows broken.</p>								
Pocahontas, Randolph and Webster counties	20				0	0	5	0	Flooding
	<p>Showers and thunderstorms dumped heavy rains across portions of WV with the heaviest rainfall in eastern Webster, southern Randolph and northern Pocahontas counties. Most rain fell between 1 and 9 am with 2.5 to 3 inches common and 3.64 inches reported at Valley Head.</p> <p>Flash flooding began around sunrise. One of the hardest hit areas was along the Shavers Fork in Randolph county. Water flooded approximately 100 summer dwellings and trailers. About 30 unoccupied camping trailers were damaged and 10 were washed downstream. The National Fish Hatchery at Bowden was flooded and about 20,000 trout washed downstream giving an early stocking to the Shavers Fork. The high water mark of 1915 was exceeded at Bowden by one foot.</p> <p>At Valley Head in southern Randolph county about 25 homes, a store and a church were flooded by 4 to 5 feet of water. Flooding began around 8:30 am.</p>								
WEST VIRGINIA									
Statewide	28 morning				0	0	0	0	Record Cold
	<p>The heavy rain fell in the headwater areas of the Cheat, Greenbrier and Tygart Valley Rivers. All of these rivers reached flood stage by late in the day causing minor flooding. About 50 families were evacuated in the Marlinton area along the Greenbrier River.</p> <p>An arctic air mass brought record breaking cold temperatures to the area. Elkins set a new record of 4 above..the old record was 13. Beckley's reading of 9 shattered the old record of 18. The coldest temperatures, all in the northern mountains, included minus 4 at Gladly, minus 3 at Thomas and zero at Pickens.</p>								
Statewide	31 1400-1700EST				0	0	4	0	Thunderstorms
	<p>A north-south line of strong thunderstorms rumbled east hitting just about all of West Virginia. There were several reports of strong gusty winds causing minor damage along with small hail.</p> <p>Some of the hardest hit areas included the Northern Panhandle. At Chester, Hancock county, trees were uprooted downing power lines. Three cars were damaged from falling trees. In Wheeling, Ohio county, a portion of the Civic Center roof was blown off. Siding was also ripped from homes. High winds blew over a semi-trailer on a highway near Moundsville.</p>								
Wood county	31 1405EST				0	0	0	0	Hail
	<p>The Parkersburg airport received 3/4 inch hail.</p>								
47 WISCONSIN									
Burnett, Polk, Barron, Rusk, Sawyer and Price Counties	12	1700 - 2200CST			0	0	4	0	Wind
	<p>60 mph winds broke numerous windows and downed trees and power lines. Power outages, ranging up to two hours, were reported in the Park Falls (Price County) area, and at scattered locations in Burnett and Polk Counties.</p>								
Statewide	13	0800 - 2000CST			0	8	5	0	Wind
	<p>50 to 70 mph westerly winds buffeted the state, resulting in widespread minor damage. Hundreds of windows were broken, about 175 buildings sustained roof damages, and 6 automobiles were damaged by debris. Widespread power outages, ranging up to 5 hours, were reported from most sections of the state. 8 minor injuries occurred when the wind blew automobiles off highways in 4 separate incidents.</p>								
Madison, Dane County	30	1328CST			0	0	0	0	Severe Thunderstorm
	<p>3/4 inch hail was sustained.</p>								
Statewide	30	1400 - 2100CST			0	0	6	0	Wind
	<p>Southwesterly winds swept across the state causing widespread damage. Trees and power lines toppled in hundreds of locations resulting in power outages to 6,000 people. Barns, roofs, construction projects, and mobile homes sustained the brunt of the damage.</p>								
Armenia Township Juneau County - Stevens Point Portage County	30	1405CST			0	2	5	0	Tornado (F1)
	<p>A tornado touched down in Armenia Township (Juneau County) where it destroyed a house and three nearby mobile homes. Two occupants of the house were injured. The tornado then moved northeast on a 22 mile intermittent path, just southeast of Nekoosa (Wood County) and finally disappeared 3 miles southwest of Stevens Point (Portage County).</p>								
Marshfield and Wisconsin Rapids, Wood County	30	1420CST			0	0	4	0	Severe Thunderstorm
	<p>One inch hail resulted in numerous broken windows and dented cars.</p>								

STORM DATA AND UNUSUAL WEATHER PHENOMENA

MARCH 1982

PLACE	DATE	TIME - LOCAL STANDARD	LENGTH OF PATH (MILES)	WIDTH OF PATH (YARDS)	NO. OF PERSONS		ESTIMATED DAMAGE		CHARACTER OF STORM
					KILLED	INJURED	PROPERTY	CROPS	
48 WYOMING									
Cheyenne, Laramie County	12	0715MST			0	0	1	0	Wind
									High winds during the morning hours with a peak gust to 75 mph at Cheyenne took the top 30 feet off an 80-foot spruce tree in front of the Wyoming Supreme Court Building.
49 ALASKA									
South Central	20				0	0	3	0	High Wind
									A strong front moving through the area brought 60 to 80 mph winds to areas along the mountains of East Anchorage, Eagle River and Palmer.
Brooks Range	25				0	0	3	0	Avalanche
									An avalanche in Atigun Pass covered the Dalton Highway narrowly missing four trucks stopped along the roadway. This avalanche and others blocked the road between Fairbanks and Prudhoe Bay for several days stalling more than 5 dozen trucks waiting to cross the pass.
50 HAWAII									
Statewide	17				0	0	5	5	Rain, hail
									An active frontal system moved across the State accompanied by locally heavy rains. Pea sized hail fell at the Pacific Palisades, Oahu, at 1345 HST. Later in day minor flooding at Kihel, Maui and at Kona on the Big Island.
Wahiawa, Oahu	18	1250 HST	3	100	0	0	5	0	Tornado (F1)
									Small tornado moving southeastward touched down briefly doing damage of \$200,000 to 26 homes in the Wahiawa area.
Laei, Oahu	21	0700 HST			0	6	6	5	Flooding
									A small early morning thunderstorm stationary for several hours on the slopes of the Koalaus above Laei on northern Oahu dropped heavy rains within the watershed of the Kahawaimui Stream causing the stream to overflow and damage the contents of 250 homes. Also damage to utilities and to a prawn farm at Kahuku. Accumulated debris in the stream channel blaned partially for the flooding. Total damage estimated near \$600,000.
Nuano, Oahu	23	0600 HST			0	0	3	0	Flooding
									Minor flooding along streams in Nuano area.
Molokai, Maui, Hawaii	30-31				0	0	6	5	Flooding
									Persistent heavy rains along windward slopes cause damage mainly to roads and bridges and other public property in sparsely populated sections of State. Road to Hana on Maui washed out in several spots. Also damage in west Maui including the Iao Valley. Hilo area on Hawaii experience some localized flooding after 10 inches of rain on the 31st.
51 PUERTO RICO ————— NONE REPORTED									
52 VIRGIN ISLANDS ————— NONE REPORTED									
53 PACIFIC									
Ponape, Micronesia	28-29				0	0	5	0	Wind, Surf
									Wind and high waves cause damage to sea walls and boat houses on southern sections of atoll. Tropical storm Odessa forming in the area.

REFERENCE NOTES

† Storm damage categories are from	*	Miles instead of yards
1 to 9 as follows:	**	Yards instead of miles
1 Less than \$50	°	Includes crop damage
2 \$50 to \$500	@	Includes heavy sleet storm
3 \$500 to \$5,000	#	Freezing drizzle and freezing rain, commonly known as glaze
4 \$5,000 to \$50,000	‡	Not received or incomplete
5 \$50,000 to \$500,000		
6 \$500,000 to \$5 Million		
7 \$5 Million to \$50 Million		
8 \$50 Million to \$500 Million		
9 \$500 Million to \$5 Billion		

"F" SCALE DEFINITIONS

0 =	40-72	MPH	Breaks branches off trees; signboards damaged.
1 =	73-112	MPH	Peels surface off roofs; trailer houses pushed or damaged.
2 =	113-157	MPH	Tears roofs off frame houses and outbuildings; cars blown off highway.
3 =	158-206	MPH	Windows of skyscrapers smashed; frame houses destroyed; cars lifted off ground.
4 =	207-260	MPH	Skyscrapers twisted; frame houses leveled; cars blown some distance.
5 =	261-	MPH	or greater.

USCOMM-NOAA-ASHEVILLE, N.C. 1982-2500

DEPARTMENT OF COMMERCE
NATIONAL OCEANIC AND ATMOSPHERIC ADMINISTRATION
ENVIRONMENTAL DATA AND INFORMATION SERVICE
NATIONAL CLIMATIC CENTER
FEDERAL BUILDING
ASHEVILLE, N.C. 28801

POSTAGE AND FEES PAID
U.S. DEPARTMENT OF COMMERCE

COM 210
THIRD CLASS
BULK RATE

