

FEBRUARY 1982

VOLUME 24

NUMBER 2

STORM DATA



"I CERTIFY THAT THIS IS AN OFFICIAL PUBLICATION OF THE NATIONAL OCEANIC AND ATMOSPHERIC ADMINISTRATION AND IS COMPILED FROM INFORMATION RECEIVED AT THE NATIONAL CLIMATIC CENTER, ASHEVILLE, NORTH CAROLINA 28801."

Daniel B. Mitchell

DIRECTOR
NATIONAL CLIMATIC CENTER

noaa

NATIONAL OCEANIC AND
ATMOSPHERIC ADMINISTRATION

ENVIRONMENTAL DATA AND
INFORMATION SERVICE

NATIONAL CLIMATIC CENTER
ASHEVILLE, N.C.

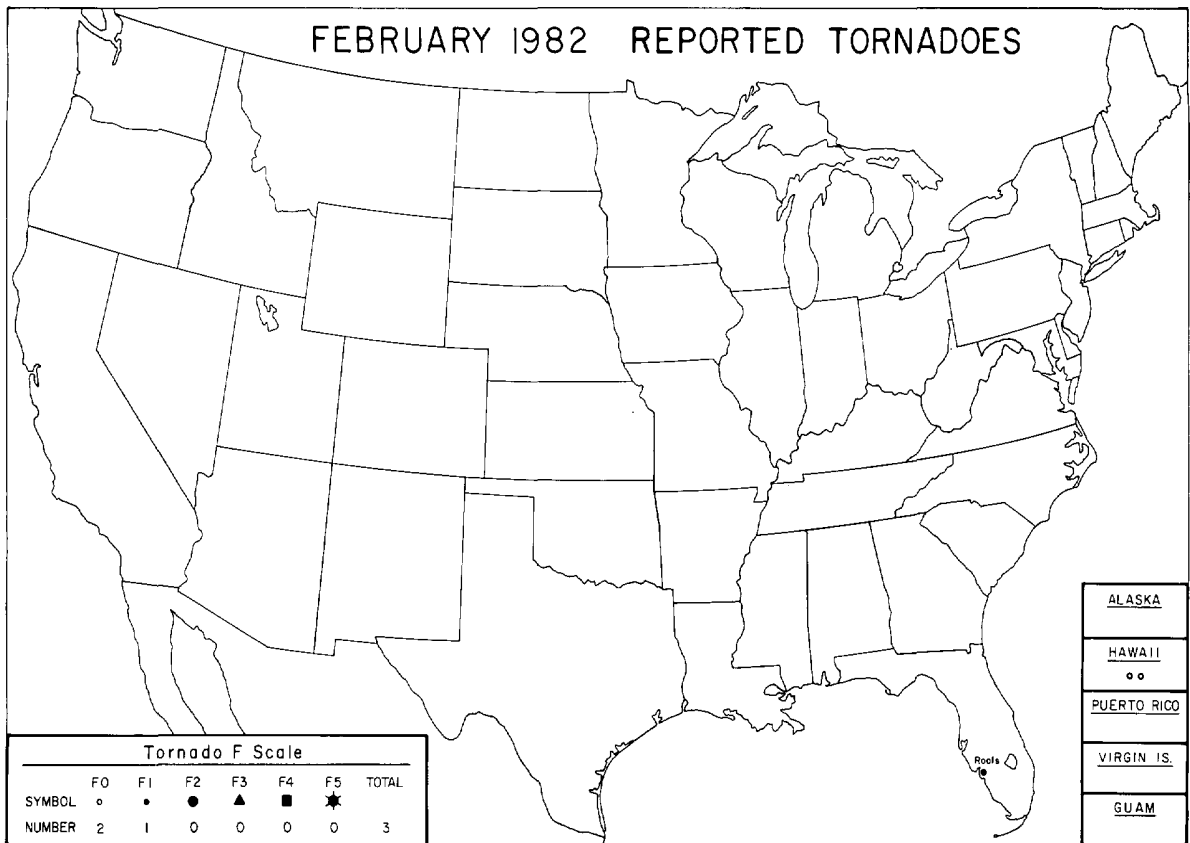
C O N T E N T S

	<u>Page</u>
Outstanding Storms of the Month	3
Storm Data and Unusual Weather Phenomena	7
Storm Summary	14
Reference Notes	15
"F" Scale Definitions	15

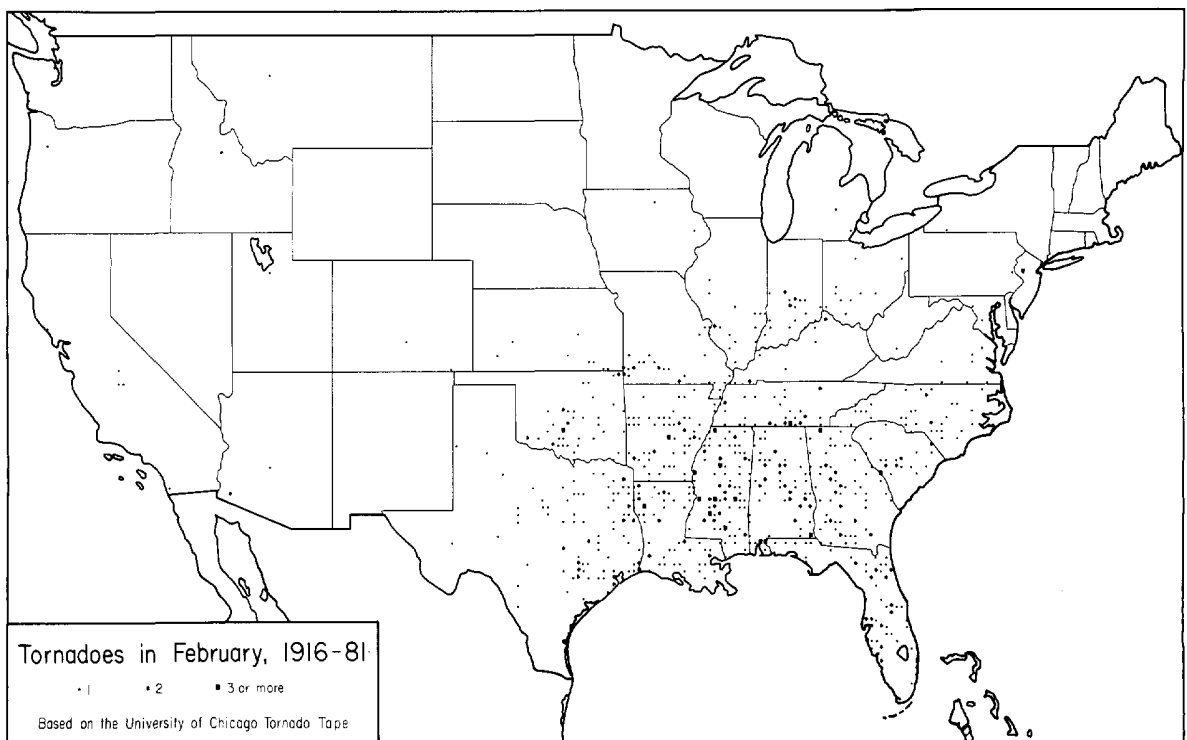
NOTE: The section on Outstanding Storms of the Month is prepared and edited by Professor T. Theodore Fujita, University of Chicago. The narrative descriptions of Storms by State and Summaries of Hurricanes and Tropical Storms are prepared by the National Weather Service. The National Climatic Center compiles the statistics on deaths, injuries, and damage. This publication contains our best information on storms but, due to the difficulties inherent in collection of this type of data, it is not all-inclusive. Late Reports and Corrections will be carried quarterly.

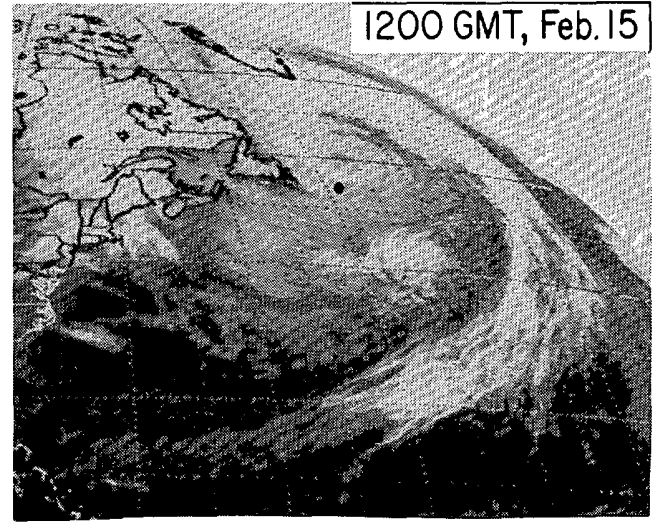
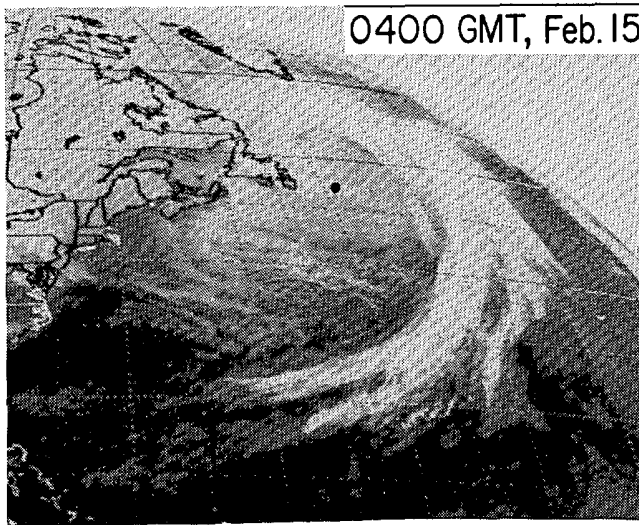
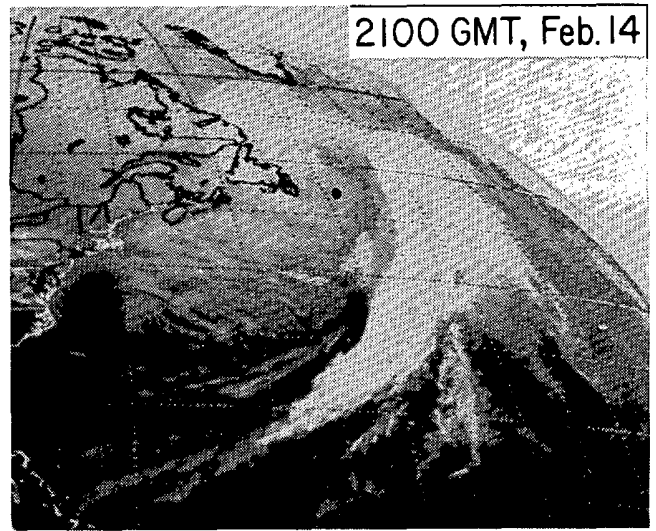
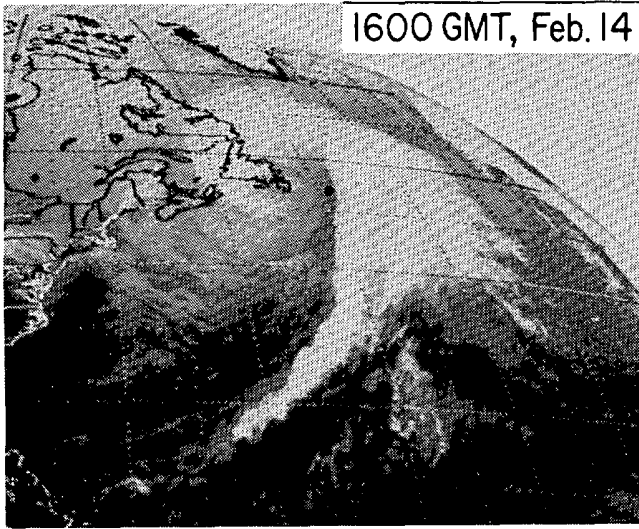
STORM DATA - (USPS 363-010) is published monthly. Subscription, pricing, and ordering information is available from: Publications Section, The National Climatic Center, Environmental Data and Information Service, NOAA, Federal Building, Asheville, NC 28801.

OUTSTANDING STORMS OF THE MONTH



● TYPED REPORT RECEIVED	⊙ PRELIMINARY REPORT RECEIVED	○ NO REPORT RECEIVED	(N) northern (S) southern	(E) eastern (W) western	(C) central (O) coastal						
● 1AL	● 5CO	● 10ID	● 15KY	● 20MI	● 25NE	● 30NY(O)	● 33OH	● 37RI	● 41TX(S)	● 45WA	● 50HI
● 2AZ	● 6CT	● 11IL	● 16LA	● 21MN	● 26NV	● 30NY(C)	● 34OK	● 38SC	● 41TX(W)	● 46WV	● 51PR
● 3AR	● 7DE	● 12IN	● 17ME	● 22MS	● 27NH	● 30NY(W)	● 35OR	● 39SD	● 42UT	● 47WI	● 52VI
● 4CA(N)	● 8FL	● 13IA	● 18MD	● 23MO	● 28NJ	● 31NC	● 36PA(E)	● 40TN	● 43VT	● 48WY	● 53GU
● 4CA(S)	● 9GA	● 14KS	● 19MA	● 24MT	● 29NM	● 32ND	● 36PA(W)	● 41TX(N)	● 44VA	● 49AK	





Four infra-red pictures above show the comma-shaped cloud of the storm as it maintained a lowest central pressure of 952 mb. The position of the oil rig for which the weather record is given (previous page) is indicated by a black dot.
- - - Satellite photos from NESS, World Weather Building.

2. CHICAGO SNOW on February 5, 1982

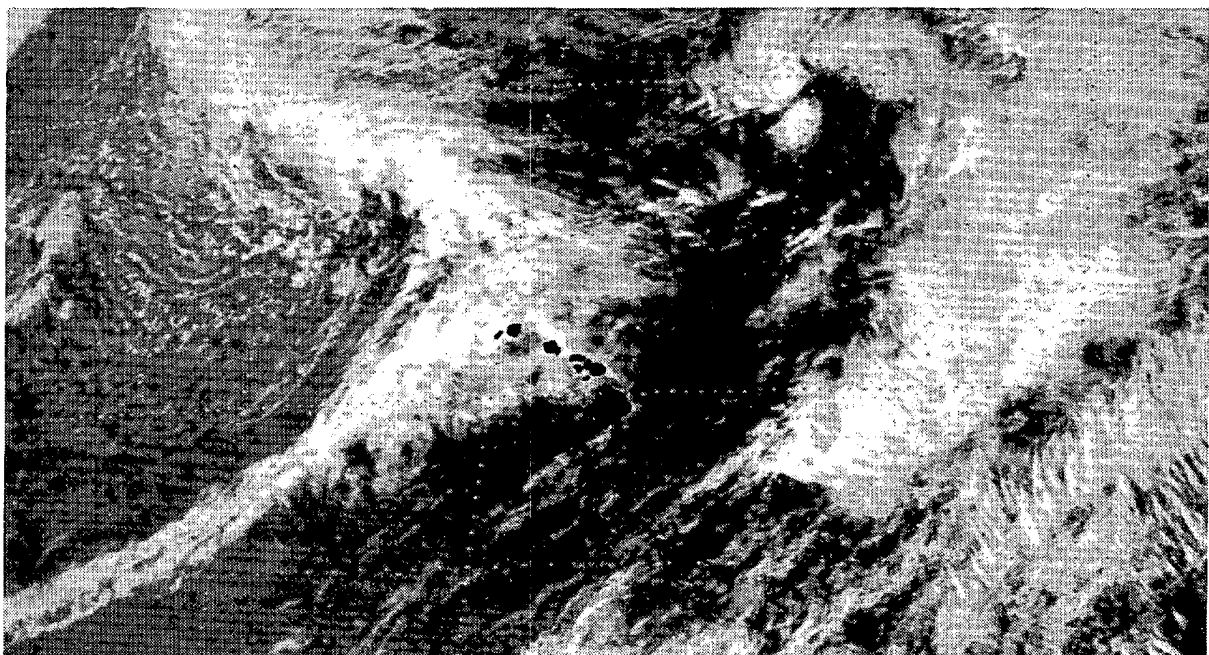
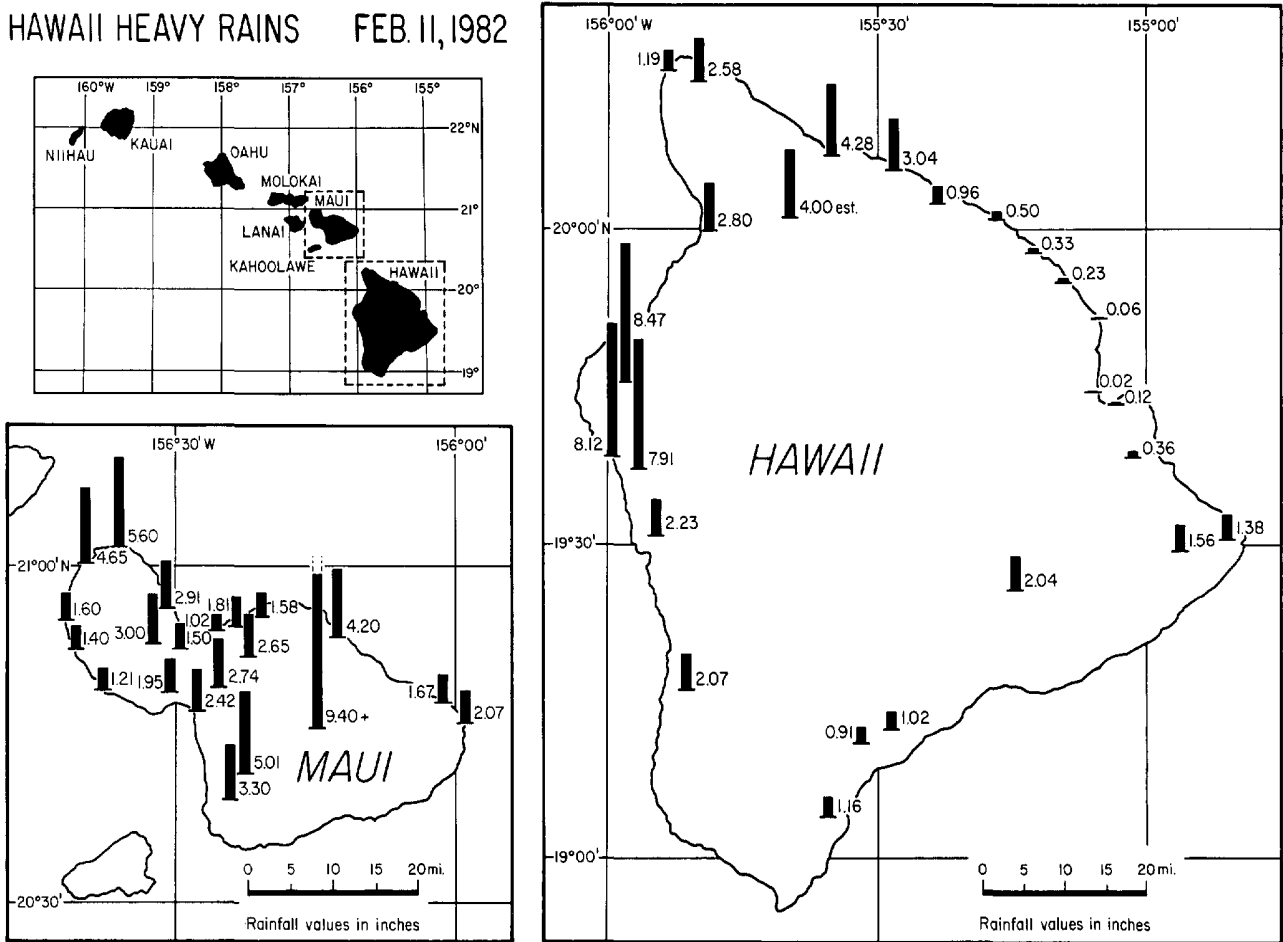
Numerous accidents occurred as heavy snow fell during Chicago's morning rush hour on February 5th. The photo at right shows a car which landed on its roof after spinning out on the East-West Tollway.
- - - Photo by Luigi Mendicino, Chicago Tribune.



3. PACIFIC CYCLONE OVER HAWAII on February 11, 1982

A Pacific cyclone with a strong cold front extending into low latitudes produced heavy rains, high winds, hail and two tornadoes over the Hawaiian Islands on February 11th. 24-hour rainfall on the islands of Maui and Hawaii is shown below. Heavy rain on the northwest coast of the island of Hawaii is unusual.

HAWAII HEAVY RAINS FEB. 11, 1982



The satellite photo above, taken at 1415 HST on February 10th, shows the storm as it approached the Islands. - - - Rainfall data and satellite photo supplied by NWSFO Honolulu, Hawaii.

STORM DATA AND UNUSUAL WEATHER PHENOMENA

FEBRUARY 1962

PLACE	DATE	TIME - LOCAL STANDARD	LENGTH OF PATH (MILES)	WIDTH OF PATH (YARDS)	NO. OF PERSONS		ESTIMATED ¹ DAMAGE		CHARACTER OF STORM
					KILLED	INJURED	PROPERTY	CROPS	
1 ALABAMA									
Southwest to East-Central Alabama	02-03				1	0	4	0	Flooding
	Heavy rains of 3.5 to 7 inches from the 2nd and into the early morning hours of the 3rd caused urban and small stream flooding in a band from southwest Alabama into the east-central part of the state. Most of the flooding was in lowlands and damage was classified as minor. However, two women drove their car into the Little Warrior River in Blount County around 9 p.m. CST on the 2nd while attempting to cross a "low water bridge" that was covered with a few feet of water. The car was swept downstream. One of the women drowned and her body was not found for several days. The Little Warrior Basin was not in the heavier rain area to the south. 24 hour rainfall amounts were estimated at 1.25 to 1.50 inches over the Little Warrior River Basin. Water had probably covered the bridge since the first week in January when 4 to 5 inches of rain fell in Blount County.								
Atmore, Escambia County	09	1135CST			0	0	4	0	Wind
	Strong winds damaged the roof of the Alabama State Prison at Atmore. A mobile home was blown off its blocks and a boat was blown across the street and destroyed.								
Opp Area, Covington County	16	1445CST			0	0	4	0	Wind
	Thunderstorm winds destroyed a three-car carport. A nearby barn was damaged when the roof off the carport was blown into it. Two vehicles parked under the carport were heavily damaged by falling blocks and debris. Some of the concrete blocks were blown as much as 200 feet. One string of blocks held together by steel reinforcing rods, still hung from the remains of the carport roof after it landed on the barn, some 100 feet away. There was apparently no damage to any other of the several buildings in the farm complex located off highway 52 east. Two and one-half inches of rain fell during the storm.								
Lawrence County	16	2141-2235CST			0	0	3	0	Hail
	Several reports of mostly marble size hail. However, at 9:55pm CST marble size hail covered the ground with some hail to golf ball size in the Loozier Community in western Lawrence County. Also, hail up to golf ball size damaged some car windows and home windows in the Speak and Five Points Community. The hail was 3 inches deep on the ground in the area.								
Elkmont Area, Limestone County	16	2250CST							Funnel Cloud
	Elkmont police reported a funnel cloud in the area.								
Northeast Alabama	26	1500CST			0	0	5	0	Ice Storm
	Freezing rain and sleet spread over the area generally from Talladega, Clay and Randolph Counties to the Tennessee Border during the late afternoon and evening. Most of the ice accumulation was on trees and utility lines at higher elevations. But, spotty icing on bridges and roads resulted in several traffic accidents. Power outages occurred in several areas. The Sand and Lookout Mountain areas around DeKalb County were hardest hit. There was extensive damage to trees and utility lines in those areas and roads were blocked by downed trees.								
2 ARIZONA - NONE REPORTED									
3 ARKANSAS									
Briggsville, Yell County	16	0700 CST			0	0	4	0	Lightning
	Home was severely damaged by lightning which came into the house on electrical wires. The force blew a hole in the roof, blew out three windows on the west side, melted meter box, blew fuse box off wall, knocked hole in living room ceiling, badly burned outside covering of house, and ruined all appliances. A telephone cable box 450 feet away with underground cable to the house was shattered.								
4 CALIFORNIA, Northern									
Sierra Nevada, Northern Mountains, Sacramento Valley, San Francisco and Monterey Bay areas	13 to 15	0800PST to 1000PST			-	-	-	-	Winter Storm
	Strong winds along the coast. Warm temperatures with the snow levels above 6000 to 8000 feet. Rainfall totals were between 3 and 6 inches with higher amounts in the Sierra.								
4 CALIFORNIA, Southern									
Inyo County	26	1230 PST			0	0	unk	0	High Winds
	Very strong winds about 8 miles north of Lee Vining, estimated near 100 mph, blew truck over on its side. Road closed to campers and trucks for a period of time.								
5 COLORADO									
Statewide	1-5				1	1	4	0	Snow, cold
	A bitterly cold arctic airmass settled over Colorado, and periods of snow coupled with the lowest temperatures of the winter brought miserable weather to all areas of the state. Most snowfall occurred early in the period; 1 to 4 inches covered most spots at lower elevations, with up to 15 inches in the mountains. Then came the cold. Denver reached 15 below zero on the 5th, the coldest reading in over 8 years. Denvers high temperature on the 4th was 1 below, the first day since 1963 that the mercury failed to reach zero. The only death attributed to the cold was a transient in Denver who apparently froze to death sleeping in an unheated building. In Colorado Springs, where the mercury dropped to 19 below, a woman was found unconscious and close to death in a snowbank. Many spots had even colder temperatures. 20 to 30 below zero readings were common in the mountains and in the northeast, where Fort Morgan reported 25 below. In the foothills, Central City and Black Forest shivered at 32 and 36 below, respectively. The coldest official reading was 38 below at Craig in the northwest, and also at Florissant, in a high valley near the center of the state. However, an unofficial reading of 52 below zero was noted in a mountain valley near the Wyoming border. Damage from the cold consisted mostly of water pipes that froze and then burst. One such incident dampened the National Weather Service office in Denver.								
6 CONNECTICUT - NONE REPORTED									
7 DELAWARE									
New Castle County	2-3				0	0	0	0	Rain, Flooding
	Rainfall of between one and two inches fell from the night of the 2nd into the morning of the 3rd. This, combined with snow melt, caused minor flooding of streams in the County...requiring the closing of some roads. One of the more serious locations affected was the Stanton Underpass and Route 7, where eight feet of standing water was reported. At nearby Hoopes Reservoir overflowing water carried large blocks of ice with it, blocking Barley Mill Road.								
Southern	13	Morning			0	0	0	0	Snow
	Low pressure moved northeastward from the Gulf of Mexico, to off the coast of the Carolinas. Wet snow accumulating 4 to 5 inches fell over portions of Sussex County.								
Kent and Sussex Counties	17-18				0	0	0	0	Snow
	A low center moved from the Tennessee Valley eastward off the coast of North Carolina late on the 17th into the morning of the 18th. The disturbance dumped 4 to 6 inches of snow across the southern two-thirds of the state...with sections of Dover reporting the heaviest amounts. From 1 to 3 inches fell over New Castle County.								
8 FLORIDA									
Ocala County	02	1000 CST			0	0	5	0	Lightning
	A large barn located just west of Crestview was struck by lightning and burned to the ground. The barn was used for the commercial sale of crickets. The fire destroyed several tons of feed, three tractors, a trailer, shop equipment, tools, air conditioners, heaters, fans, and about one million crickets. Total damage was estimated to be \$100,000.								
Bay County	03	0600 CST			0	0	4	0	Lightning
	Lightning struck a home in Lyn Haven, located just west of Panama City, and eventually destroyed the house. Speculation was that the bolt hit a fuse panel causing a short to develop which finally ignited gas leaking from a gas line that was also damaged by the lightning bolt. The resulting explosion destroyed the house, but miraculously none of the four people in the house were injured. Damage was estimated to be \$25,000.								

STORM DATA AND UNUSUAL WEATHER PHENOMENA

FEBRUARY 1952

PLACE	DATE	TIME - LOCAL STANDARD	LENGTH OF PATH (MILES)	WIDTH OF PATH (YARDS)	NO. OF PERSONS		ESTIMATED DAMAGE		CHARACTER OF STORM
					KILLED	INJURED	PROPERTY	CROPS	

PLACE	DATE	TIME - LOCAL STANDARD	LENGTH OF PATH (MILES)	WIDTH OF PATH (YARDS)	NO. OF PERSONS		ESTIMATED DAMAGE		CHARACTER OF STORM
					KILLED	INJURED	PROPERTY	CROPS	

FLORIDA

Manatee County 17 0630 EST 1.0 50 0 0 5 0 Tornado(F1)

A tornado struck sections of Ellenton and Palmetto, small towns located in an area just north of Sarasota. In Palmetto a large lumber yard was damaged and the roofs were ripped off a number of mobile homes at Tropical Isle Mobile Home Park. In Ellenton damage was confined to scattered roof damage plus the usual downing of trees and power lines. Total damage was estimated to be \$100,000, with about one half of this total at the lumber yard.

9 GEORGIA

Northern third of Georgia 02-04 0 0 6 0 Flooding

Up to 7 inches of rain fell over the northern third of Georgia during the 24 hours ending at 7 AM on the 3rd. Significant flooding began on the evening of the 2nd. Numerous secondary roads were temporarily closed throughout the area. Several hundred families were evacuated, mostly in Cobb, Douglas, and Polk Counties. The heaviest damage to homes occurred in the northwest portions of the Atlanta Metropolitan Area in Cobb and Douglas Counties.

Colquitt County 09 1700EST 0 0 4 0 Wind

Strong thunderstorm winds damaged the roofs of a house and a dairy barn, and blew over several trees in Hartsville.

Peach and Houston Counties 16 1720EST 0 0 0 0 Hail

Hail almost to golf-ball size fell near Highway 96 at the Peach-Houston County Line.

Jefferson County 16 2030EST 0 0 4 0 Wind

Strong thunderstorm winds tore the roofs off three barns near Mathews. Several trees were blown over; two trees fell onto power lines and another fell onto a car.

Richmond County 16 2042-2115 EST 0 0 5 0 Wind, Hail

Strong thunderstorm winds blew the roofs off 3 classrooms at the Floyd Graham Elementary School in Hepzibah. The roofs were blown off 2 houses in the Goshen area and large trees were blown onto two other roofs. Numerous large pine and oak trees were uprooted. Hail up to 1 inch in diameter fell at Blythe at 8:42 PM and golf-ball size hail covered the ground at the intersection of US 25 and Tobacco Road in Augusta at 9:15 PM.

Thomas County 16 2030EST 0 0 4 0 Wind

Strong thunderstorm winds ripped the roof off a mobile home, and blew over a large oak tree which then fell onto the mobile home. Another mobile home nearby was also damaged by a falling tree.

Northern third of Georgia 26- Mrng of 27 26th thru mrng of 27th 0 0 ? 0 Winter Storm

A winter storm brought a mixture of sleet, freezing rain, and snow to the northern third of Georgia. Up to 8 inches of snow fell in the northeast Georgia mountains. Some tree limbs became heavy with ice and fell on power lines, causing power interruptions for about 30,000 customers in the Atlanta area; otherwise only minor damages were reported. Temperatures rose above freezing statewide on the afternoon of the 27th and the sleet and snow began to melt.

10 IDAHO

Post Falls, Kootenai County 16 Early Morning 0 0 5 0 High Winds

High winds moved through the Post Falls area, Kootenai County, blowing down a 32 foot by 120 feet building. Damage was estimated at nearly \$80,000.

Coeur d'Alene River Basin, Shoshone and Kootenai Counties; Weiser River Basin, Washington County; Salmon River at Salmon, Lemhi County; Many small rivers, Bonner County 15-23 0 0 7 0 Flooding

Tropical moisture moved over Idaho on the 13th and continued to surge over the State for the next week and a half. Since the snow pack averaged 150 percent of normal, the rain and melting snow pushed rivers over flood stage, and in several cases caused ice jams. Damage costs included \$200,000 in Lemhi County, \$2 million in Washington County, and \$1 million in Bonner County.

11 ILLINOIS

Southern third Jan-Feb 0 0 ? ? Cold

Extremely cold minimum temperatures from mid-January through the first few days in February severely damaged the peach crop in southern Illinois. Several new low temperature records were set in this area as minimums fell to 25 degrees below zero.

Belleville, St. Clair County 8 0 0 6 0 Snow

The heavy snow that fell during January and early February caused a company roof to collapse in Belleville. Cars, including some antique models, were damaged. Total damage was estimated at \$80,000.

Will and Kankakee Counties 22-28 0 0 7 ? Flooding

Flooding of the Kankakee River, due mainly to an ice jam, started on the 22nd and continued through the 28th. On the 23rd more than 40 families were evacuated from Wilmington and 10 families from the Mokenca area. By the 27th the river was 9.3 feet above flood stage, the worst flooding in 25 years. Many buildings, homes, and roads were damaged as the standing water in low-lying areas climbed to 4 to 7 feet. The estimated damage was near 9 million dollars.

12 INDIANA

West Central 1 0700EST -- -- 0 0 ? 0 Flooding

rapid snow melt rested in ice jams on Wabash river. The area between Lafayette in Tippecanoe county to Terre Haute in Vigo county. Other counties effected...Warren, Vermillion and Parke.

Northeast and Central Indiana 3 1500EST -- -- 0 0 0 0 Heavy snow

5 to 10 inches of snow fell in a band across the mid section of the state as well as the northeast.

Central and Northeast Indiana 8 1630EST -- -- 0 0 0 0 Heavy snow

4 to 6 inches of snow fall reported across the central and northeast sections of the state.

Southern and South Central Indiana 8 1830Est -- -- 0 0 0 0 Glaze

Road surfaces glazed with ice, no major damage reported only minor traffic accidents.

13 IOWA ————— NONE REPORTED

STORM DATA AND UNUSUAL WEATHER PHENOMENA

FEBRUARY 1982

PLACE	DATE	TIME - LOCAL STANDARD	LENGTH OF PATH (MILES)	WIDTH OF PATH (YARDS)	NO. OF PERSONS		ESTIMATED ¹ DAMAGE		CHARACTER OF STORM
					KILLED	INJURED	PROPERTY	CROPS	

PLACE	DATE	TIME - LOCAL STANDARD	LENGTH OF PATH (MILES)	WIDTH OF PATH (YARDS)	NO. OF PERSONS		ESTIMATED ¹ DAMAGE		CHARACTER OF STORM
					KILLED	INJURED	PROPERTY	CROPS	

14 KANSAS

Gray County | 4 1800CST | 1 0 0 0 | Cold
A woman's car slid into a ditch on a country road northeast of Garden City. She left the car and was found dead from exposure 2 days later. Temperatures were at or below zero when the car became snowbound and for more than 24 hours thereafter.

Washington County | 18 Early Morning | 0 0 5 0 | River Ice
Ice in the Little Blue River knocked out a 154 foot span of a light duty bridge.

15 KENTUCKY ————— NONE REPORTED

16 LOUISIANA

Bogalusa, Washington Parish | 02 0325CST | 0 0 4 0 | Lightning
Lightning struck a home during a heavy thunderstorm.

New Iberia, Iberia Parish | 02 2300CST | 0 0 4 0 | Lightning
Lightning struck a butane tank and the ensuing fire spread to an adjacent home that suffered extensive damage.

Marksville, Avoyelles Parish | 06 2045CST Short Narrow | 0 0 4 0 | Thunderstorm
The downburst associated with a severe thunderstorm over Marksville destroyed several large trees, one of which fell on an auto destroying it. A metal awning over a store front was destroyed, two garages were overturned, and small sheds were demolished along a one thousand yard track in the path of the storm.

Ruston, Lincoln Parish | 09 0100CST | 0 0 2 0 | Thunderstorm
High winds associated with a severe thunderstorm uprooted a large oak tree.

Plattenville, Assumption Parish | 09 1400CST | 0 0 3 0 | Thunderstorm
The aluminum roof was blown off the drive-up window of a Plattenville bank during a severe thunderstorm.

Southwest Louisiana | 15 0900-1300CST | 0 0 3 0 | Heavy Rain
Street flooding and small streams overflowing caused minor damage but considerable inconvenience in and near Abbeville, Vermilion Parish; Lafayette, Lafayette Parish; Lake Charles and Vinton in Calcasieu Parish; and Ville Platte, Evangeline Parish.

17 MAINE

Southern | 1 1/31 Evening to 2/1 Morning | 0 0 4 0 | Rain, Freezing Rain and Snow
Downed tree limbs and iceladen powerlines caused power outages. Two boats sank at Southwest Harbor. A garage roof collapsed under the weight of rain and the snow at the end of the storm in Augusta. Several communities were without power. A barn roof collapsed the next day (2nd) in Dayton.

Northern Aroostook County | 25-26 Evening to Morning | 0 0 3 0 | High Winds
Wind gusts to 56 mph produced considerable blowing and drifting snow. All roads north of Houlton were closed Friday. Numerous drifts to 14 feet and hard as concrete made travel next to impossible. Visibility was reduced to near zero.

18 MARYLAND and D.C.

North Central and Northeastern Maryland | 1-3 | 0 0 4 0 | Flooding, Ice Jams
A combination of ice and snow melt along with rainfall brought localized flooding. On the 1st...a thawing period caused chunks of ice on Big Elk Creek, east of Elkton, to pile up against bridges. As a result, stream back-up occurred and brought minor flooding to the Farr Creek community. Later, rainfall of between 1 and 2 inches on the 2nd combined with snow melt over a more extensive portion of the state: Many roads were closed due to water in Frederick County, especially in the New London area...and over Carroll, Howard, and counties to the northeast, on the 3rd. Elkton had about the most serious situation with water 3-feet deep on some streets. Large ice chunks were carried onto several roads over the affected area, blocking them completely.

Southeastern | 12-13 | 0 0 0 0 | Snow
A rapidly-moving low pressure system moved east-northeastward out of the eastern Gulf of Mexico. Snow spread into the area during the night of the 12th...ending by noon...of the 13th. Depths of heavy, wet snow ranged mainly from 3 to 6 inches...with up to 8.5 inches in the Salisbury area. Rapid melting due to rising temperatures caused some localized minor flooding.

————— MARYLAND and D.C.

Northern Half | 17-18 | 0 0 0 0 | Snow
Rain during the early part of the day on the 17th changed to snow in the afternoon...continuing into the morning of the 18th. Snow amounts of 3 to 5 inches were common...with 6 to 8 inches reported in Washington and Frederick Counties. Queen Annes County on the Eastern Shore reported 4 inches of snow, for the ninth major fall of the season...in an area that normally expects only two significant snowfalls.

Frederick County | 18-19 | 0 0 0 0 | Snow, Sleet
Sabillasville, in the extreme northern portion of the County recorded 4 inches of new snow that fell during the night of the 18th, into morning of the 19th. Farther to the south a mixture of snow, sleet and rain brought accumulations of generally 1 to 2 inches of frozen precipitation.

Southern Maryland | 27 Afternoon | 0 0 0 0 | Snow
A low pressure disturbance skirted the North Carolina coast and brought heavy snow to the south central portion of Maryland. In St. Marys County 4 to 6 inches of wet snow caused at least a dozen highway accidents. One rarity...Patuxent River Naval Station measured nearly 11 inches of snow for the month of February, while Oakland, in the far northwest part of the state, had only 6.5 inches of snow for the month.

19 MASSACHUSETTS ————— NONE REPORTED

20 MICHIGAN

Lake Odessa, Ionia County | 01 Morning | 1 | Cold
Woman found frozen.

Saginaw Bay, near Caseville | 01 | 1 | Snow, Cold
Man died of exposure after becoming lost in snow storm while ice fishing.

South of Jackson and Port Huron | 03 All Day | 6 | Snow
Roof of Farmington Hills City Hall, several other roofs, canopies, and structures collapsed under weight of accumulated snow from this and several previous storms. Two fatal and several non-fatal heart attacks from snow shoveling. One man shot in argument over snow removal. Many injuries, much property damage in vehicle accidents.

Franklin, Oakland County | 21 Noon | 1 3 | Snow loading
Man crushed when roof collapsed.

21 MINNESOTA ————— NONE REPORTED

22 MISSISSIPPI ————— NONE REPORTED

23 MISSOURI ————— NONE REPORTED

24 MONTANA ————— NONE REPORTED

25 NEBRASKA

South Central Nebraska | 01 Morning - Evening | 0 0 0 0 | Heavy Snow
Heavy snow fell in portions of south central Nebraska with 6 inches at Hastings, 5 inches at Grand Island, and 4 inches at Kearney and York.

STORM DATA AND UNUSUAL WEATHER PHENOMENA

FEBRUARY 1982

PLACE	DATE	TIME - LOCAL STANDARD	LENGTH OF PATH (MILES)	WIDTH OF PATH (YARDS)	NO. OF PERSONS				ESTIMATED DAMAGE		CHARACTER OF STORM
					KILLED	INJURED	PROPERTY	CROPS	PROPERTY	CROPS	
26 NEVADA											
Reno Area	16	2000PST	-	-	0	0	5	0	Flood		
Truckee River and local inflow caused mud slides and local overflow east of Sparks.											
Carson City, Minden, Gardnerville and Dayton	15-18	-	-	-	0	0	5	0	Flood		
Carson River overflow flooded Agricultural areas and Golf course. Damaged Lloyd's Bridge severely.											
30 East of Elko	16	-	-	-	0	0	5	0	Flood		
Western Pacific Railroad had 200 feet of track washed out by heavy rain and snow melt runoff.											
Battle Mountain Area	23-24	-	-	-	0	0	4	0	Flood		
Runoff on Humboldt River caused local Agricultural Faish Flood.											
Winnemucca Area	27-28	-	-	-	0	0	4	0	Flood		
Runoff on Humboldt River caused local Agricultural Flooding.											
27 NEW HAMPSHIRE											
Southern	1	Evening of 1/31 to Morning of 1st			0	0	3	0	Rain, Freezing Rain & Snow		
Rain, freezing rain and snow caused some urban flooding. Widespread power outages. No injuries were reported. A snow laden roof collapsed damaging stored autos.											
Southern	24	Daytime			0	0	3	0	Snow		
Snow in the amount of 6 to 10 inches fell in Rockingham, Stratford, Merrimack and Hillsborough Counties. The rest of the state had from 5 to 8 inches.											
28 NEW JERSEY ————— NONE REPORTED											
29 NEW MEXICO											
Eastern Plains	1	Night			0	0	4	0	Wind, Cold, Snow		
Strongly developing storm brought severe windiness to the Eastern Plains. Damage reports indicated damage to power lines and light buildings from winds and flying debris. Snow clogged streets as temperatures reached near zero and winds gusted to near 45 knots.											
30 NEW YORK, Coastal ————— NONE REPORTED											
30 NEW YORK, Central											
AREAWIDE	3	0600 to 2200EST			0	0	5	0	Rain-Sleet-Freezing Rain		
Rain during the day mixed at times with sleet and changing to freezing rain at night. 1/4 inch of precipitation in the North to around 1 1/4 inches in the South was reported. There were isolated reports of up to 2 inches in the Catskills and lower Hudson Valley areas. Most problems occurred in Southern sections.											
Daytime warming and rain caused ice jamming on some of the rivers and streams. This resulted in local flooding problems near the streams. Homes, barns and businesses were flooded. In Delaware County a wall of water and ice snagged under a bridge and backed up water carried automobiles into several buildings with knee deep water in the residences. Ice jams caused local road flooding throughout the area. Temperatures dropped below freezing during the evening and many traffic accidents were reported. Area hospitals and doctors reported treating dozens of people for broken bones and damaged muscles from hard falls on the ice covered ground. Several buildings were also reported damaged when roofs collapsed from the weight of the ice and snow.											
ONEIDA COUNTY	15	1245EST			1	0	3	0	Falling Ice		
A thirty-eight year old man was struck on the head by a chunk of ice a foot thick. He was standing next to his automobile which was parked at the side of a service station, when the ice fell and hit him on the head, smashing the windshield and damaging the roof of his car. His wife and child inside the car were uninjured but he died the next day in the hospital, never regaining consciousness.											

PLACE	DATE	TIME - LOCAL STANDARD	LENGTH OF PATH (MILES)	WIDTH OF PATH (YARDS)	NO. OF PERSONS				ESTIMATED DAMAGE		CHARACTER OF STORM
					KILLED	INJURED	PROPERTY	CROPS	PROPERTY	CROPS	
30 NEW YORK, Western ————— NONE REPORTED											
31 NORTH CAROLINA											
CHARLOTTE MECKLENBURG COUNTY	17	1500-1525 EST			0	0	0	0	HEAVY RAIN		
A thunderstorm moved across Douglas Map, Charlotte accompanied by small hail and heavy rain. 2.30 inches of rain fell in 25 minutes.											
WESTERN NORTH CAROLINA	26-27	EVENING THRU EARLY MORNING							HEAVY SNOW		
Heavy snows occurred across Western North Carolina on the evening of the 26 through the early morning of the 27. Snow fall amounts ranged from around 3 inches in the Piedmont to 7 inches in the Southern and Central Mountains.											
32 NORTH DAKOTA											
South Central and Southeast	23-24				0	0	0	0	Heavy Snow		
Heavy snow (7.2 inches at Bismarck in Burleigh County, 8 inches at Jamestown in Stutsman County and 6.1 inches at Fargo in Cass County) caused the cancellation of many athletic events and meetings.											
33 OHIO											
Northern Half	17	0600-1400 EST			0	0	4	0	Ice Storm		
Freezing rain occurred in much of the northern half of the state. Glazed roads caused several accidents and many closings and cancellations. Several ice coated wires and trees were downed due to the weight of the ice.											
Pickaway, Ross and Pike Counties	17	Evening			0	0	3	0	Flooding		
Above freezing temperatures melted snow and caused river flooding along the Scioto River from Circleville to Piketon.											
Putnam, Hancock and Defiance Counties	23	Morning			0	0	3	0	Flooding		
Above freezing temperatures melted a heavy snow pack causing minor flooding in the Blainard and Maumee Rivers.											
34 OKLAHOMA											
Northwestern Oklahoma	02				0	?	?	?	Winter Storm		
Snowfalls, of up to 18 inches in the Woods County community of Waynoka, paralyzed northwestern Oklahoma. Numerous businesses and schools were closed. At least four people were treated for exposure after being stranded on a snowbound road, also numerous people received minor injuries in falls. Exact estimates of damages are unavailable, however losses did occur to livestock, crops, roadways, stuck vehicles, and frozen pipes.											
Lawton, Comanche County	05	0745CST			1	?	?	?	Freezing Temps.		
An older woman, 84, apparently became disoriented, walked away from a nursing home, and froze to death.											
Northern Oklahoma	11				0	?	?	?	Winter Storm		
Cold temps, snow, and high winds again hit the state. Losses again involved stranded motorists, livestock, crops, roadways, frozen pipes, and closures of schools and businesses.											

STORM DATA AND UNUSUAL WEATHER PHENOMENA

FEBRUARY 1982

PLACE	DATE	TIME - LOCAL STANDARD	LENGTH OF PATH (MILES)	WIDTH OF PATH (YARDS)	NO. OF PERSONS		ESTIMATED ¹ DAMAGE		CHARACTER OF STORM		
					KILLED	INJURED	PROPERTY	CROPS			
35 OREGON											
Northwest Oregon	14 to 15	UNK	UNK	UNK	UNK	UNK	UNK	UNK	Rainstorm, Flooding		
									Heavy rains with coastal mountain stations reporting 6 to 8 inches during period - minor to moderate flooding many northwest basins.		
Eastern Oregon Basins	15 to 28	UNK	UNK	UNK	UNK	UNK	UNK	UNK	Warm rains, local ice jams, Flooding		
									Significant flooding in Malheur Basin on 16th & 17th due to warm temperatures and warm rains.		
Northwest Oregon	19	UNK	UNK	UNK	UNK	UNK	UNK	UNK	Rainstorm, Flooding		
									*Strong and high runoff caused damage of 2-3 million dollars estimated by Corps of Engineers to unprotected farmlands along lower Columbia River below Bonneville Dam to mouth of river.		
Malheur Basin	19 to 22	UNK	UNK	UNK	UNK	UNK	UNK	UNK	Snowmelt, Flooding		
									Strong snowmelt with minor lowland flooding until 24th of month.		
36 PENNSYLVANIA, Eastern											
Eastern Pennsylvania	02 to 04	1900 EST					0	0	5	0	Rain, Snow Melt, Flooding
											Rain and mild temperatures on January 31 and February 1 started the snow cover to melt and raised stream levels. Heavier rain that started on the 2nd combined with snowmelt to push some small streams over their banks. Ice that had covered most streams broke up and added to the problem as water backed up behind ice jams. The larger rivers did not crest until the 4th and here again ice jams contributed to the flooding. On all the rivers and streams the flooding was very localized and only a few buildings were flooded. Most of the damage was caused by large chunks of ice that were carried over the banks. They caused damage to trees, automobiles and other property. Huge piles of ice were left along the banks of streams and rivers. When the rain began on the 2nd, temperatures were still below freezing in some portions of the state, especially north. This resulted in icy conditions and quite a few automobile accidents. There was one report of a basement wall collapsed from pressure of saturated ground.
36 PENNSYLVANIA, Western- NONE REPORTED											
37 RHODE ISLAND- NONE REPORTED											
38 SOUTH CAROLINA											
Coonee and Pickens Counties	2-3						0	0	3	0	Heavy Rains
											Three to four inches of rain fell in less than twenty-four hours across tributaries of the Savannah and Saluda Rivers. Only minor damage from flash flooding.
Georgetown County	13	afternoon					2	0	0	0	Rough Sea
Winyah Bay Entrance											Small boat overturned in rough seas drowning two people.
Central South Carolina	17	p. m.					0	0	2	0	Hail, Strong Winds
Lexington, Lee County											Thunderstorms accompanied by strong winds and hail at Pelion and near Bishopville.
Aiken County	17	2130EST	4	50	0	0	0	0	3	0	Thunderstorms
New Ellenton											Thunderstorm winds heavily damaged a barn and other buildings causing damage of \$1,000.
— SOUTH CAROLINA											
Statewide	26-27						*	*	5	0	Snow, Sleet, Glaze
											A winter storm formed on the 26th in the northern Gulf of Mexico and moved rapidly to a position off the southeast coast of the US on the 27th, hence northeastward. Snowfall up to 6 inches occurred in northwest South Carolina; and snow, sleet and freezing rain of lesser amounts over the remainder of the state except the immediate south coast. Glaze was responsible for a very large number of wrecks in northwestern and central South Carolina with injuries and fatalities* reported. There was some disruption to utilities from limb breakage as well as some damage reported to forests, especially in the lower Piedmont and northwestern part of the state.
39 SOUTH DAKOTA- NONE REPORTED											
40 TENNESSEE- NONE REPORTED											
41 TEXAS, Northern											
North Texas	5	Morning- Afternoon					0	?	?	?	Freezing Drizzle
											Freezing drizzle resulted in numerous traffic accidents from the Dallas/Fort Worth area in the morning, eastward into East Texas during the afternoon.
2N Maypearl, Ellis County	25	Evening					0	1	0	0	Flash Flood
											A 37 year-old man and his car were swept into Cottonwood Creek by flash flood waters on Highway 157. The man was saved 8 hours after the incident, in spite of then sub-freezing temperatures.
Northwestern North Texas	25-26						0	0	?	?	Snowstorm
											Snowfall began between Abilene and Wichita Falls after dark on the 25th, finally ending in North Texas early on the 26th. Snowfall amounts of 3-4 inches were common from northeast of Abilene to the Jacksboro and Wichita Falls area, and northeastward into Oklahoma. Little or no damage resulted, with snow melting rapidly on the 26th and 27th.
41 TEXAS, Southern											
South central and Southeast Texas	5-6						0	0	?	0	Glaze
											Light freezing rain put a glaze on areas of south Texas generally north of a line from Laredo to Corpus Christi. Areas around Fredericksburg received glaze buildup most of the day Feb. 5 while areas farther south sustained ice buildup after dark Feb. 5 through early morning Feb. 6. Accumulations were too light for significant damage, however many traffic accidents were reported as ice stuck on bridges and overpasses. Dozens of injuries were reported throughout the area, with at least one traffic fatality known at George West.
Jasper Co.	15	Late afternoon-night					0	0	5	0	Heavy Rain
Newton Co.	15	Late afternoon-night					0	0	4	0	Heavy Rain
											Heavy rain associated with slow-moving thunderstorms drenched Jasper, Newton, and adjacent counties during the morning 8 am to noon. Around 3 pm CST renewed series of thunderstorms approached from the southwest and by 7 pm had formed a nearly stationary band stretching southwest to northeast from the city of Jasper to Toledo Bend in Newton Co. By 4 pm slight flooding of creeks was reported with rainfall totalling up to 3.25 inches at Buna. By 730 pm sudden, more serious rises were starting over northern parts of both counties. Rainfall at Jasper amounted to 4 inches and at Newton 4.45 inches by 730 pm. Severe street flooding was reported in the city of Jasper with some houses and businesses flooded. Sandy Creek spilled out of banks soon after 7 45 pm. Elsewhere mainly rural areas from Jasper to Newton were flooded along creeks.
Cameron Co.	19	Late afternoon-night					0	0	5	?	Heavy Rain
											A weak frontal zone formed inland from and nearly parallel to the extreme lower Texas coast. Over-run by a stream of Gulf moisture brought northward by an upper atmospheric low in Mexico, the weak convergence zone at the front produced a narrow band of intense rains over western Cameron Co. Maximum rainfall was at Harlingen where 7.76 inches fell from 330 pm to 8 45 pm (This included the main deluge of 5.76 inches from 6 pm to 8 45 pm). In the same period Adams Garden measured 7.42 inches. Meanwhile just to the east, Brownsville received only .04 inch; to the west McAllen got 1.31 inch.

STORM DATA AND UNUSUAL WEATHER PHENOMENA

FEBRUARY 1982

PLACE	DATE	TIME - LOCAL STANDARD	LENGTH OF PATH (MILES)	WIDTH OF PATH (YARDS)	NO. OF PERSONS				ESTIMATED DAMAGE		CHARACTER OF STORM
					KILLED	INJURED	PROPERTY	CROPS	PROPERTY	CROPS	

PLACE	DATE	TIME - LOCAL STANDARD	LENGTH OF PATH (MILES)	WIDTH OF PATH (YARDS)	NO. OF PERSONS				ESTIMATED DAMAGE		CHARACTER OF STORM
					KILLED	INJURED	PROPERTY	CROPS	PROPERTY	CROPS	

TEXAS, Southern

Damages occurred in Harlingen, Adams Gardens, Combs, San Benito, and Rio Hondo, and were estimated at \$250,000 for property. Some 3 dozen vehicles were flood damaged in low lying streets and many others were abandoned as most thoroughfares became impassable by 7 pm. By 9 pm water was reported entering downtown businesses in Harlingen and homes in low lying suburbs in southeast Harlingen. Some 57 buildings received flood damages. About 20 families were evacuated until water receded later that night. There were no reported injuries. In the almost flat area, water ponded in basin areas and remained without draining for over a week. Damage to winter crops was not known.

Nueces Co. 20 Early morning 0 0 ? ? Heavy Rain
Heavy thunderstorms dropped intense rain over Corpus Christi for a short duration and caused brief flooding of streets. There was no known significant damage. At Corpus Christi International Airport .77 inch of rain was recorded in 11 minutes from 445 am to 456 am.

Karnes Co. 20 All day 0 0 0 0 Heavy Rain
Atascosa Co. 20 All day 0 0 0 0 Heavy Rain
Clusters of thunderstorms dropped localized heavy rains over central Karnes and central Atascosa Counties. Rainfall accumulated steadily but mainly from 8 am to 2 pm. Eventual totals for the day included Falls City 4.75 inches; McCoy 4.0; Charlotte 3.77; and Pleasanton 3.80.

Nueces Co. 25 Afternoon-night 0 0 4 0 Heavy Rain
Thunderstorms bearing heavy rain drenched Nueces Co. during the afternoon. Falling onto ground already soaked by rains just 5 days earlier, these storms lead to flooding of low areas and basins throughout Nueces Co. Heavy rains were not quite so intense in adjacent Jim Wells and San Patricio Counties. Rainfall at Corpus Christi for the afternoon and evening totaled 4.73 inches; at Portland, 3.78 inches. Main damage was to automobiles, several dozen of which were partially submerged when motorists drove into deeply flooded intersections or access roads along IH 37. Other major roads which flooded that afternoon included TX44 Corpus Christi to Bobstown; HWY 286 Corpus Christi to Chapman Ranch; and portions of Farm Roads 2292, 70, and 665.

Nueces Co. 25 Afternoon 0 0 4 0 Lightning
Frequent, intense lightning bolts hit the Corpus Christi area during heavy rainstorms. Significant damage was reported to transmitting equipment of a cable television company.

Calhoun Co. 25 Afternoon 0 0 5 0 Heavy Rain
Thunderstorms along the immediate coastline and inland for 25 to 30 miles dropped intense rains during the early through late afternoon. Heaviest reported rainfall was at Port Lavaca where 5.5 inches fell (5.03 inches measured in town). Over 5 inches fell elsewhere on the coast including Alamo Beach, Magnolia Beach, Indianola; Seadrift got 5.0; Port Oconnor registered 3.75 inches. Several bridges were overtopped by flood waters, while many rural and urban roads were made impassable for several hours into the evening. Waters stopped just short of entering low homes and apartments of Port Lavaca. Main damage was believed to be street and some bridge washouts. Flooded areas had become impassable by 345 pm and waters receded slowly after 10 pm.

Goliad Co. 25 Afternoon 1 0 ? 0 Heavy Rain
While most of Goliad County received less than 2 inches of rain during the afternoon, areas of extreme eastern Goliad Co. were deluged by a heavier cluster of rainstorms. On the Goliad-Victoria County line, Coletto Creek Reservoir registered 4.50 inches, most falling during the period noon to 5 pm. Heaviest rains around the communities of Cologne, Fannin, and Scurlock put rises on Turkey, Perdido, and Manahuilla Creeks. Sometime during the late afternoon (reportedly 4 to 5 pm), a sudden rise of water on Perdido Creek isolated an oil rig site several miles northwest of Fannin. Five men at the rig were cut off by flooded roads and attempted to board swift water to higher ground. One of those men was swept away by the swift current and drowned while pulling himself through the water by rope. Waters were said to have subsided quickly after the incident. FM Road 2987 from Fannin to Schroeder was overwashed briefly.

41 TEXAS, Western ——— NONE REPORTED

42 UTAH ——— NONE REPORTED

43 VERMONT

AREAWIDE 3 0600 to 2330EST 0 0 5 0 Rain - Sleet - Freezing Rain

Heavy rain during the day changed to sleet and freezing rain at night. Up to 1 1/2 inches of precipitation was reported except for isolated amounts to around 2 inches in Southern parts of the State. Flooding resulted in many areas as the rain and snowmelt flowed into low lying areas. The situation was made worse by the damming effect of the snow piled at roadsides. Up to two feet of water accumulated on some roads.

Temperatures dropped below freezing in the evening and icing resulted. Many traffic accidents were reported. Ice on power lines and trees caused power outages in some areas. A bridge was damaged in Windsor County when rain broke some of the ice on the river and knocked out some of the bridge supports. During the next several days, in Washington County, several buildings were damaged when their roofs collapsed from the weight of the snow and ice.

44 VIRGINIA

Central 3-5 0 0 4 0 Rain, Flooding

The combination of rainfall, between one and two inches, mainly on the 3rd, and snow and ice melt brought bankfull streams to sections of Orange, Fluvanna, Goochland and Henrico Counties. The James and Rivanna Rivers had levels one to two feet above flood stage on the 4th, while the Appomattox River at Farmville reached about one foot over flood stage. Only limited problems developed on some roads, in this the first high water in the area in two years.

East Central 13 0 0 0 0 Snow
Low pressure moving off the North Carolina coast brought a narrow band of heavy snow. The 4 inches that fell in the Richmond area between midnight and 10AM did not cause any problems and it melted fairly quickly.

Northern 17 0 0 4 0 Snow
Low pressure moved from the Tennessee Valley eastward off the mid-Atlantic coast. Associated rain changed to snow in the afternoon and continued into the night with snow depths of 4 to 6 inches from Rockingham County northward to the City of Winchester, affecting Shenandoah, Warren, Page, Clarke and Frederick Counties. In lower Frederick County a home in the Star Tannery community was a total loss when fire-fighting units were hampered by 8-to-10-inch snow on the roads.

Most of State 26-28 0 0 0 0 Snow

The month ended with the heaviest snowfall in over 10 years in some localities. The nearly 12 inches of snow at Lynchburg was the most since December of 1969. The low pressure system that worked its way along the southeastern coastal region from the Gulf of Mexico, brought the first flakes to the southwestern sections late on the 26th, and snow tapered off along the central coastal area early on the 28th. Amounts of 8 to 12 inches were prevalent over much of the state, except in the southeast, where light snow or mixed rain and wet snow developed. Pulaski had one of the greatest accumulations with 14 inches measured. There was an unofficial total of 20 inches in the higher elevations. Disruption of activities and transportation was offset due to the occurrence on a weekend. Rising temperatures on the 28th also contributed to rapid melting.

45 WASHINGTON

WESTERN WASHINGTON 13-15 1 0 6 0 Heavy Rains

A combination of warm weather and heavy rainfall falling on a large amount of new unstable snow caused numerous avalanches and mudslides. On the two previous days, Stevens Pass received 28 total inches of new snow.

A state highway worker was killed on the 14th when a mudslide swept over his loader as he was working to clear a previous mudslide near Elma in Grays Harbor County. He may have been swept into the Chehalis River which was running high because of heavy rains and mountain snowmelt.

Preliminary estimates showed 36 Whatcom County roads suffered a total of \$3.6 million damage from the heavy rains of the 13th through the 15th.

Snohomish County 19 ? - - 1 0 0 0 Heavy Rains

An Index man was presumed dead when he failed to return from a fishing trip on the rain-swollen Skykomish River.

STORM DATA AND UNUSUAL WEATHER PHENOMENA

FEBRUARY 1982

PLACE	DATE	TIME - LOCAL STANDARD	LENGTH OF PATH (MILES)	WIDTH OF PATH (YARDS)	NO. OF PERSONS				ESTIMATED ¹ DAMAGE	CHARACTER OF STORM
					KILLED	INJURED	PROPERTY	CROPS		
WASHINGTON										
Spokane County	20th	PM PST	-	-	1	0	0	0	0	Heavy Rains
	A 7-year old boy from Botsell died in the collapse of a tunnel he was building in a rain-soaked sand and gravel pit									
Klickitat County	21st	0830 PST	-	-	3	0	0	0	0	Heavy Rains
	Three people were killed when their car hit a washout near the flooded Klickitat River. The driver apparently did not know the road was washed out. The car was swept downstream.									
46 WEST VIRGINIA										
Marlington	01	0140EST			0	0	?	?		Ice Jam
	30 families were evacuated from a brokenup ice jam on Nap Creek. Water was one to three feet deep around Marlington. The Greenbrier River rose 31/2 ft. in 30 minutes by 135am when the jam broke. It crested at 91/2 ft. at 2am. Flood stage was 10 ft.									
47 WISCONSIN ————— NONE REPORTED										
48 WYOMING										
Jackson, Teton County and Pinedale, Sublette County	11 12	PM AM			0	0	3	0		Extreme cold
	Extreme cold to -42° F. caused electrical power outages overnight to the Jackson area and from 6 a.m. to 2 p.m. Friday in the Pinedale area. The extreme cold caused conductors to break at splice joints, failure of oil protective systems in the circuits and failure of a power switch to open after repairs.									
Wheatland, Platte County	14	2 to 6 MST			0	0	4	0		Wind
	High winds to 50 mph with gusts to 80 mph from 2 a.m. to 6 a.m. Sunday caused extensive damage to siding on the Laramie River Power Station.									
49 ALASKA ————— NONE REPORTED										
50 HAWAII										
Statewide	11	0000 to 2100HST			0	0	6	6		Rain, hail, wind
	A strong frontal system moved southeastward across the State bringing heavy rains to Kauai late on the 10th. Large hail 1 inch in diameter fell over Oahu from Pearl City to Kailua and Maimanalo between midnight and 1 am. Heavy rains started in Kona area on Big Island about 2 am and during the following 15 hours 8 inches fell in area causing extensive erosion and water damage. Heavy rains also affected agricultural areas in Kula region of Maui. Scattered wind damage occurred mainly on Maui and Hawaii islands. Damage estimates near \$3 million on Hawaii island and \$2 million on Maui mostly due to water.									
Kona, Hawaii	11	1715HST			0	0	5	5	2	Tornadoes (F0) and waterspouts
	Numerous waterspouts observed offshore Kona. Several funnels moved inland, two touching down and doing damage to homes in the Keahoupuka area. Also, about 400 macademia nut trees blown over in a Kona grove.									
Kaanapali, Maui	23	1615HST								Waterspout
	Waterspout in Pailolo Channel moving toward Kaanapali. Dissipated offshore.									
Maalaea Bay, Maui	25	1115HST								Waterspouts
	Four waterspouts reported offshore over Maalaea Bay. Dissipated over water.									
51 PUERTO RICO ————— NONE REPORTED										
52 VIRGIN ISLANDS ————— NONE REPORTED										
53 PACIFIC										
American Samoa	4-5				0	0	5	4		Wind, Rain
	Heavy wind and rain associated with developing tropical cyclone west of the islands caused widespread minor wind damage and some flooding. Also numerous power failures. Damage much heavier in neighboring Western Samoa. Gusts at Pago Pago Airport measured near 60 mph.									

STORM SUMMARY

FEBRUARY 1982

STATE	TORNADOES					HAILSTORMS				WINDSTORMS			LIGHTNING				FLOODING				HEAVY SNOWSTORMS AND BLIZZARDS				# ICE STORMS				ALL OTHER			
	NUMBER	DAYS	DEATHS	INJURIES	DAMAGE	DEATHS	INJURIES	DAMAGE		DEATHS	INJURIES	DAMAGE		DEATHS	INJURIES	DAMAGE		DEATHS	INJURIES	DAMAGE		DEATHS	INJURIES	DAMAGE		DEATHS	INJURIES	DAMAGE				
								PROP. ERTY	CROPS			PROP. ERTY	CROPS			PROP. ERTY	CROPS			PROP. ERTY	CROPS			PROP. ERTY	CROPS			PROP. ERTY	CROPS			
Alabama																																
Arizona																																
Arkansas																																
California																																
Colorado																																
Connecticut																																
Delaware																																
Florida	1	1			5																											
Georgia																																
Idaho																																
Illinois																																
Indiana																																
Iowa																																
Kansas																																
Kentucky																																
Louisiana																																
Maine																																
Maryland & DC																																
Massachusetts																																
Michigan																																
Minnesota																																
Mississippi																																
Missouri																																
Montana																																
Nebraska																																
Nevada																																
New Hampshire																																
New Jersey																																
New Mexico																																
New York																																
North Carolina																																
North Dakota																																
Ohio																																
Oklahoma																																
Oregon																																
Pennsylvania																																
Rhode Island																																
South Carolina																																
South Dakota																																
Tennessee																																
Texas																																
Utah																																
Vermont																																
Virginia																																
Washington																																
West Virginia																																
Wisconsin																																
Wyoming																																
Alaska	2	1			5																											
Hawaii																																
Pacific																																
Puerto Rico																																
Virgin Islands																																

REFERENCE NOTES

†	Storm damage categories are from	*	Miles instead of yards
	1 to 9 as follows:	**	Yards instead of miles
1	Less than \$50	°	Includes crop damage
2	\$50 to \$500	@	Includes heavy sleet storm
3	\$500 to \$5,000	#	Freezing drizzle and freezing rain, commonly known as glaze
4	\$5,000 to \$50,000	‡	Not received or incomplete
5	\$50,000 to \$500,000		
6	\$500,000 to \$5 Million		
7	\$5 Million to \$50 Million		
8	\$50 Million to \$500 Million		
9	\$500 Million to \$5 Billion		

"F" SCALE DEFINITIONS

0 =	40-72	MPH	Breaks branches off trees; signboards damaged.
1 =	73-112	MPH	Peels surface off roofs; trailer houses pushed or damaged.
2 =	113-157	MPH	Tears roofs off frame houses and outbuildings; cars blown off highway.
3 =	158-206	MPH	Windows of skyscrapers smashed; frame houses destroyed; cars lifted off ground.
4 =	207-260	MPH	Skyscrapers twisted; frame houses leveled; cars blown some distance.
5 =	261-	MPH	or greater.

DEPARTMENT OF COMMERCE
NATIONAL OCEANIC AND ATMOSPHERIC ADMINISTRATION
ENVIRONMENTAL DATA AND INFORMATION SERVICE
NATIONAL CLIMATIC CENTER
FEDERAL BUILDING
ASHEVILLE, N.C. 28801

POSTAGE AND FEES PAID
U.S. DEPARTMENT OF COMMERCE

COM 210
THIRD CLASS
BULK RATE

