

JANUARY 1982

VOLUME 24

NUMBER 1

STORM DATA



"I CERTIFY THAT THIS IS AN OFFICIAL PUBLICATION OF THE NATIONAL OCEANIC AND ATMOSPHERIC ADMINISTRATION AND IS COMPILED FROM INFORMATION RECEIVED AT THE NATIONAL CLIMATIC CENTER, ASHEVILLE, NORTH CAROLINA 28801."

Daniel B. Mitchell

DIRECTOR
NATIONAL CLIMATIC CENTER

noaa

NATIONAL OCEANIC AND
ATMOSPHERIC ADMINISTRATION

ENVIRONMENTAL DATA AND
INFORMATION SERVICE

NATIONAL CLIMATIC CENTER
ASHEVILLE, N.C.

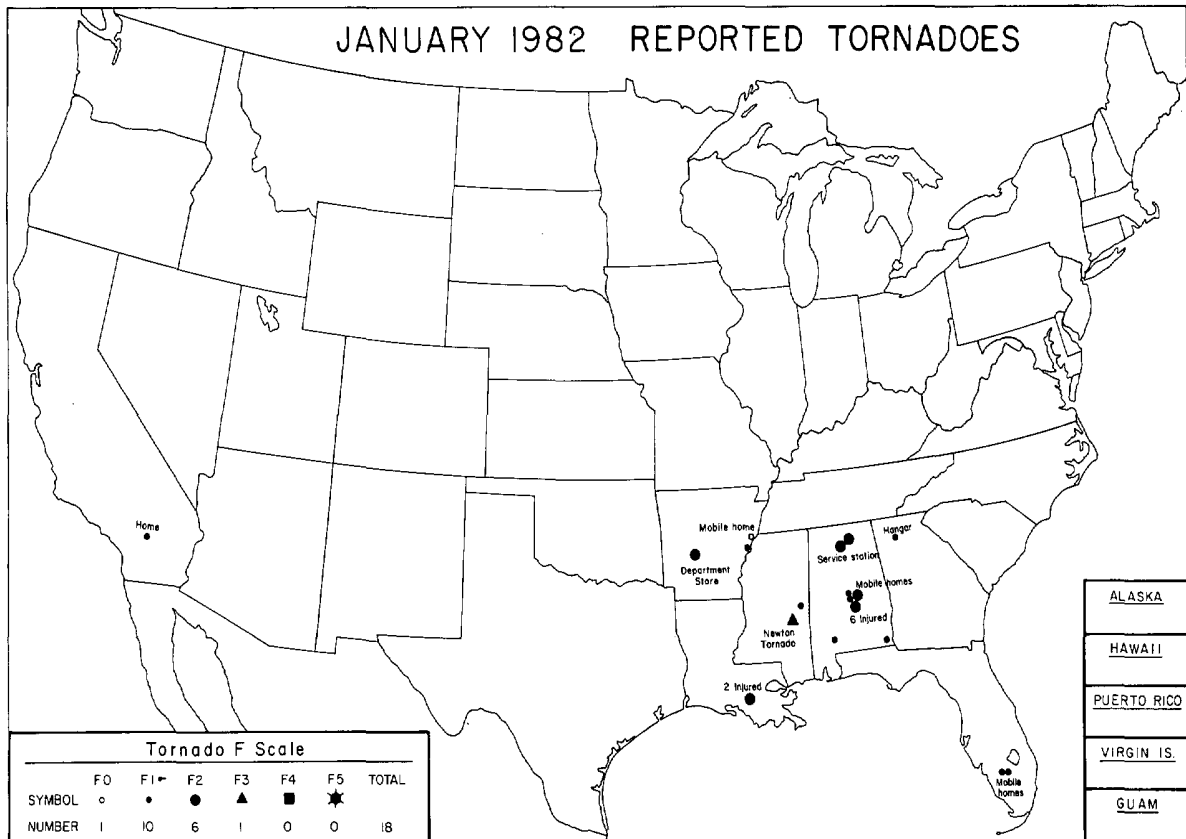
C O N T E N T S

	<u>Page</u>
Outstanding Storms of the Month	3
Storm Data and Unusual Weather Phenomena	13
Storm Summary	29
Reference Notes	31
"F" Scale Definitions	31

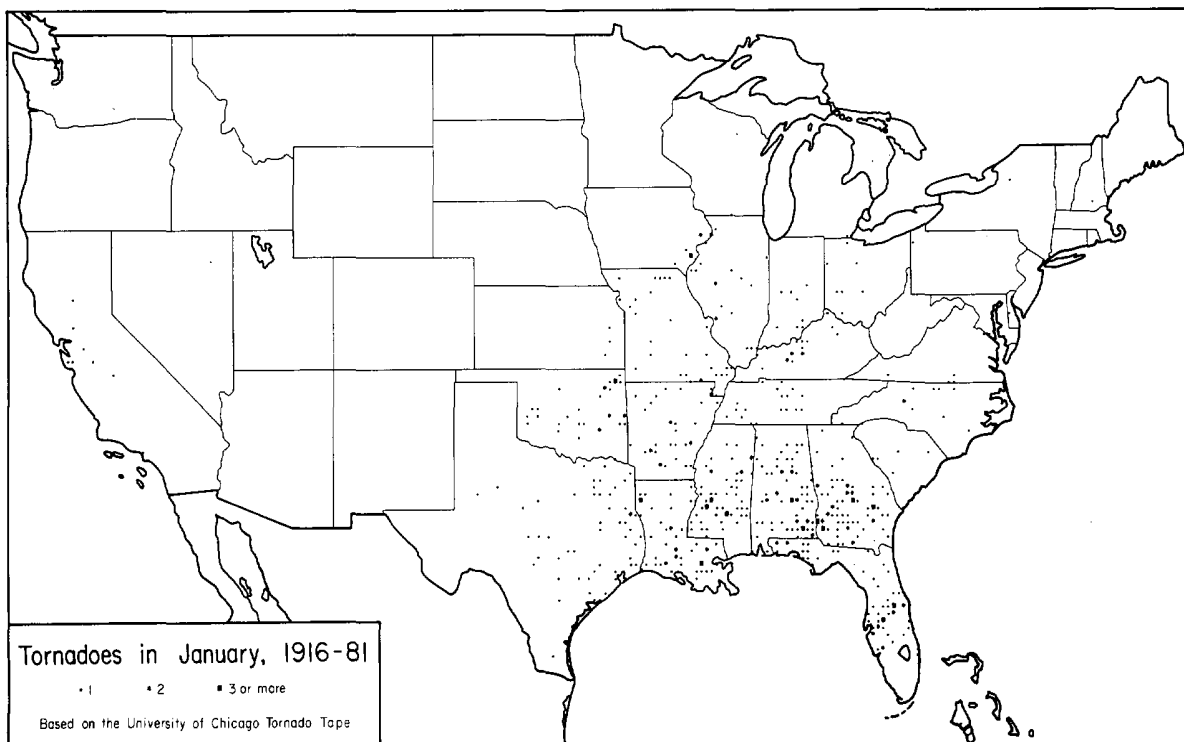
NOTE: The section on Outstanding Storms of the Month is prepared and edited by Professor T. Theodore Fujita. The narrative descriptions of Storms by State and Summaries of Hurricanes and Tropical Storms are prepared by the National Weather Service. The National Climatic Center compiles the statistics on deaths, injuries, and damage. This publication contains our best information on storms but, due to the difficulties inherent in collection of this type of data, it is not all-inclusive. Late Reports and Corrections will be carried quarterly.

STORM DATA - (USPS 363-010) is published monthly. Subscription, pricing, and ordering information is available from: Publications Section, The National Climatic Center, Environmental Data and Information Service, NOAA, Federal Building, Asheville, NC 28801.

OUTSTANDING STORMS OF THE MONTH

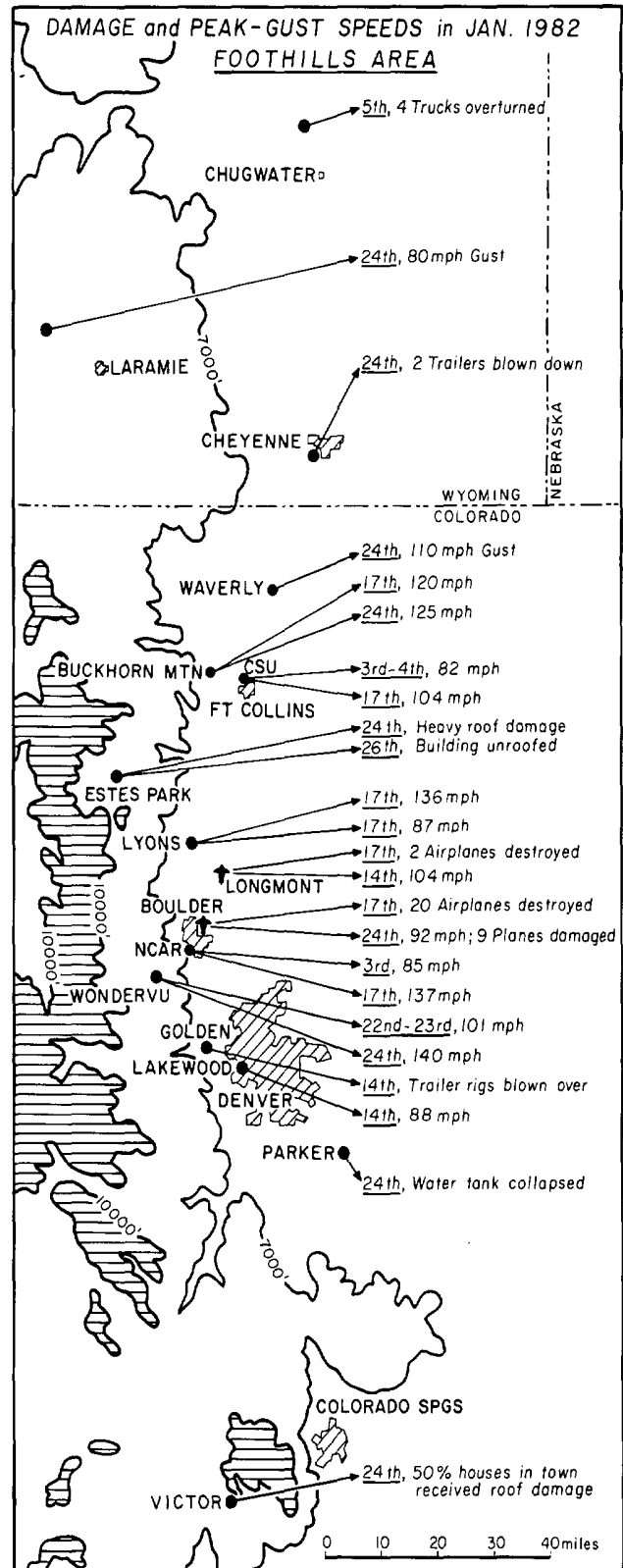
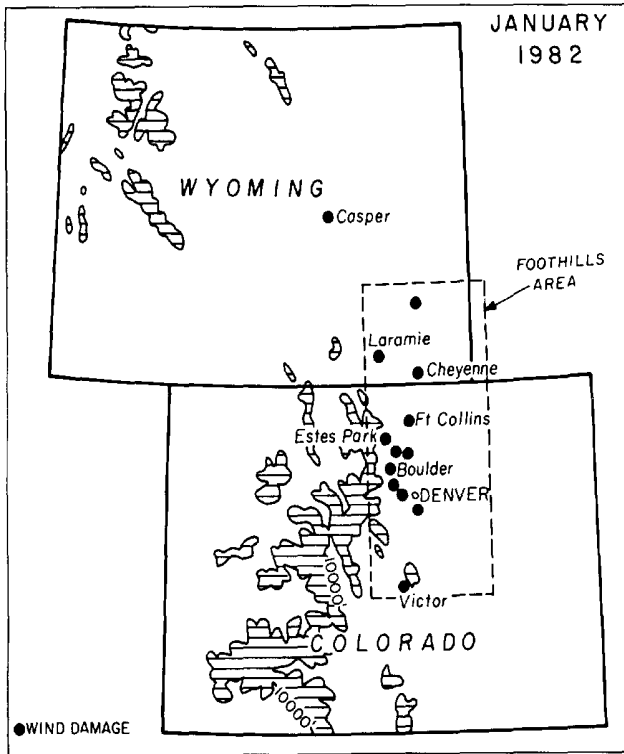


● TYPED REPORT RECEIVED	◐ PRELIMINARY REPORT RECEIVED	○ NO REPORT RECEIVED	(N) northern (S) southern	(E) eastern (W) western	(C) central (O) coastal
● 1AL	● 5CO	● 10ID	● 15KY	● 20MI	● 25NE
● 2AZ	● 6CT	● 11IL	● 16LA	● 21MN	● 26NV
● 3AR	● 7DE	● 12IN	● 17ME	● 22MS	● 27NH
● 4CA(N)	● 8FL	● 13IA	● 18MD	● 23MO	● 28NJ
● 4CA(S)	● 9GA	● 14KS	● 19MA	● 24MT	● 29NM
● 30NY(O)	● 33OH	● 37RI	● 41TX(S)	● 45WA	○ 50HI
● 30NY(C)	● 34OK	● 38SC	● 41TX(W)	● 46WV	● 51PR
● 30NY(W)	○ 35OR	● 39SD	● 42UT	● 47WI	● 52VI
● 31NC	● 36PA(E)	● 40TN	● 43VT	● 48WY	○ 53GU
● 32ND	● 36PA(W)	○ 41TX(N)	● 44VA	● 49AK	



1. DAMAGING CHINOOK WINDS in Colorado and Wyoming in January, 1982

Damaging Chinook winds affected the Foothills area extending from southeastern Wyoming to Colorado Springs. The worst Chinooks were experienced on Sunday, the 17th and again on Sunday, the 24th. Distribution of damaging winds is shown in the Colorado-Wyoming map (below).



An unroofed house (F2 damage) below National Center for Atmospheric Research (NCAR), Boulder, Colorado. Photo on the 17th by Ed Zipser of NCAR (lower left).

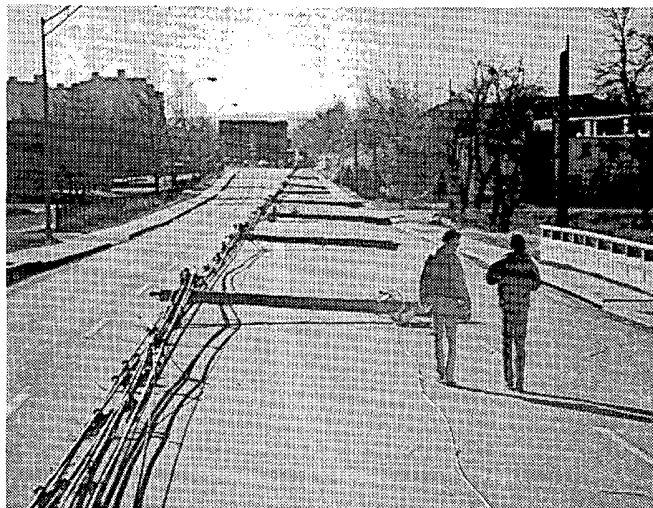
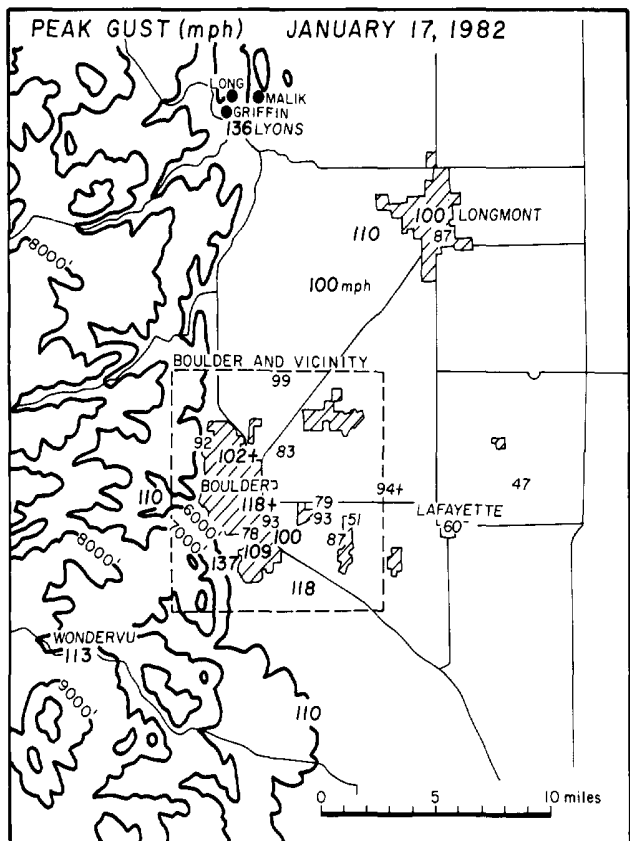


Damaged roof and missing garage (F1 damage) seen at various locations in Boulder. Photo on the 17th by Dave Blanchard of ERL (upper right).

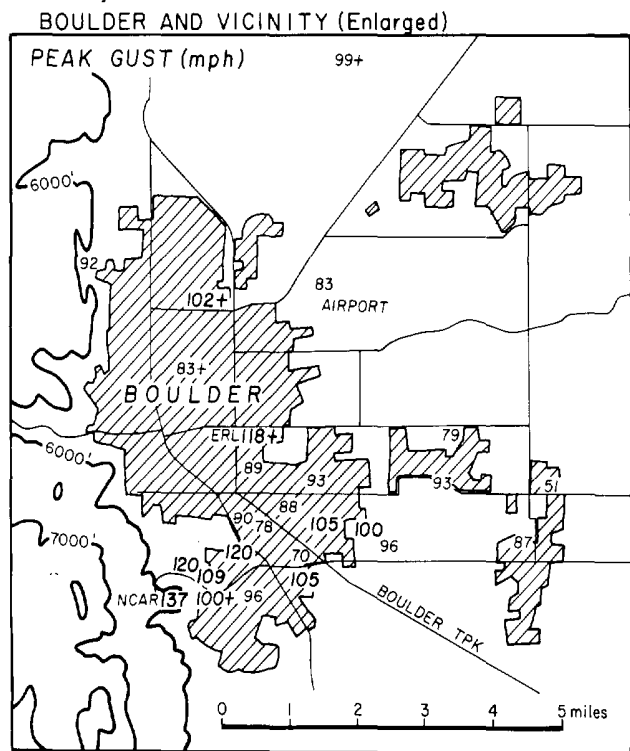
A summary map of the Chinook winds in January 1982, produced by using the data supplied by NWSFO's at Cheyenne, Wyoming and at Denver, Colorado. The 140 mph gust was reported from Wondervu while 137 mph gust was recorded at NCAR in Boulder.

1a. CHINOOK WIND on Sunday, January 17, 1982

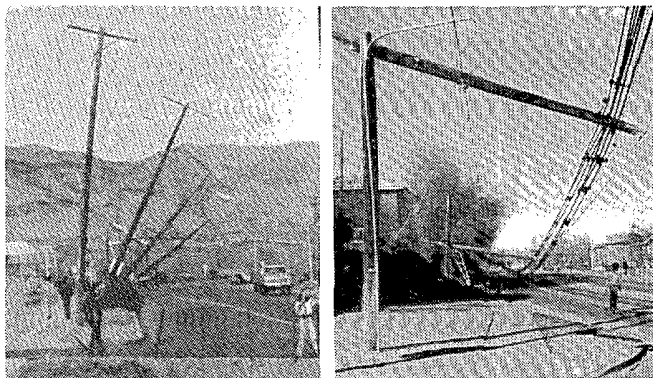
Strong Chinook wind caused F1 to F2 damage in Boulder and vicinity, uprooting trees and damaging roofs. A gust-speed map below includes 15 reports of peak gusts in excess of 100 mph. A 118 mph gust was measured on the roof of the Environmental Research Laboratories (ERL), NOAA before power failure. See 118+ speed in the map.



Power-line poles along 30th St. just west of ERL. Photo looking south by Harry Covey of ERL.



Although the exterior of the ERL office building was not damaged, some offices were disturbed by internal winds.



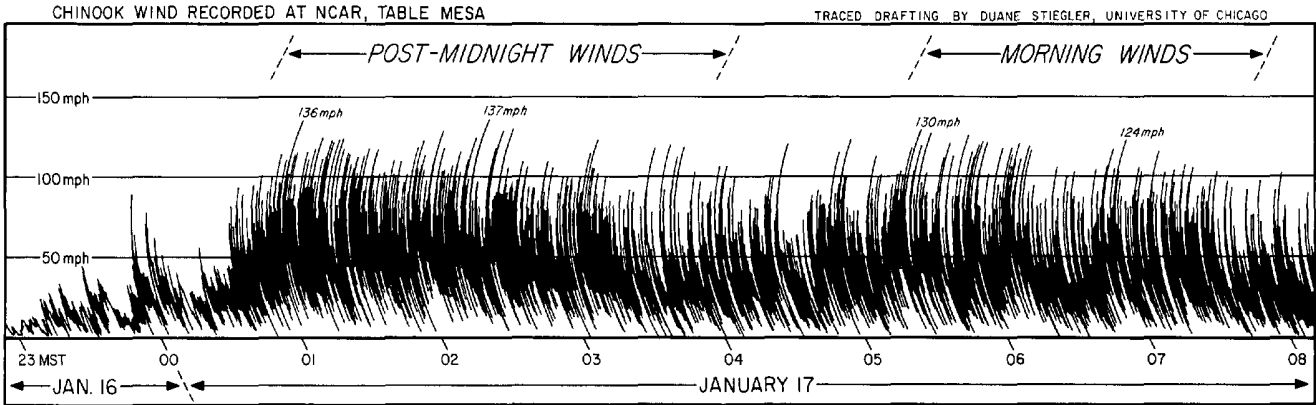
Damaged poles in Boulder. Photos by Ron Holle of ERL (right) and by Jose Meitin of ERL (left).

Peak-gust speeds on the 17th collected and mapped by Al Bedard of ERL and Ed Zipser of NCAR. The lower map is an enlargement of the dashed area (upper map).

1a. CHINOOK WIND on Sunday, January 17th

-----continued

Wind gusts shown in this chart were measured by an anemometer on the roof of the NCAR building at Table Mesa, in southwest Boulder, 600 ft. above the city. The maximum peak gust of 137 mph occurred at 0220 MST during the period of the post-midnight winds. During the second high-wind period early in the morning, a 130 mph peak gust was recorded.



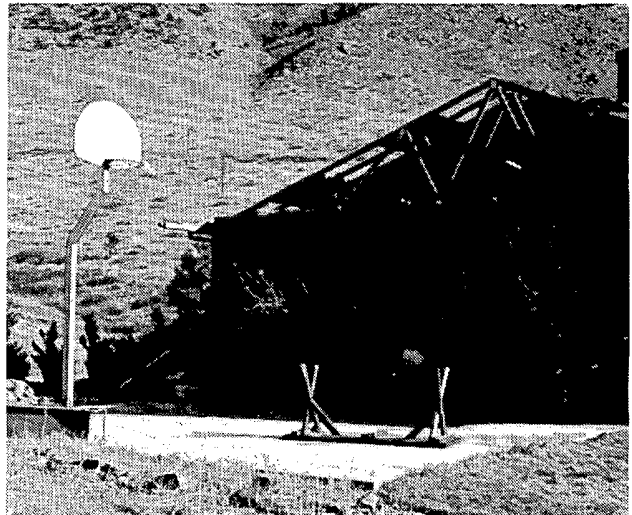
At Lyons, 15 miles north of Boulder, a number of houses and mobile homes were damaged. Four pictures shown below were supplied by Ms. Ada Lou Hammans of the Lyons Recorder through Phyllis O'Rourke of NCAR.



John Griffin's house in Lyons. Location of the house in the map on previous page.

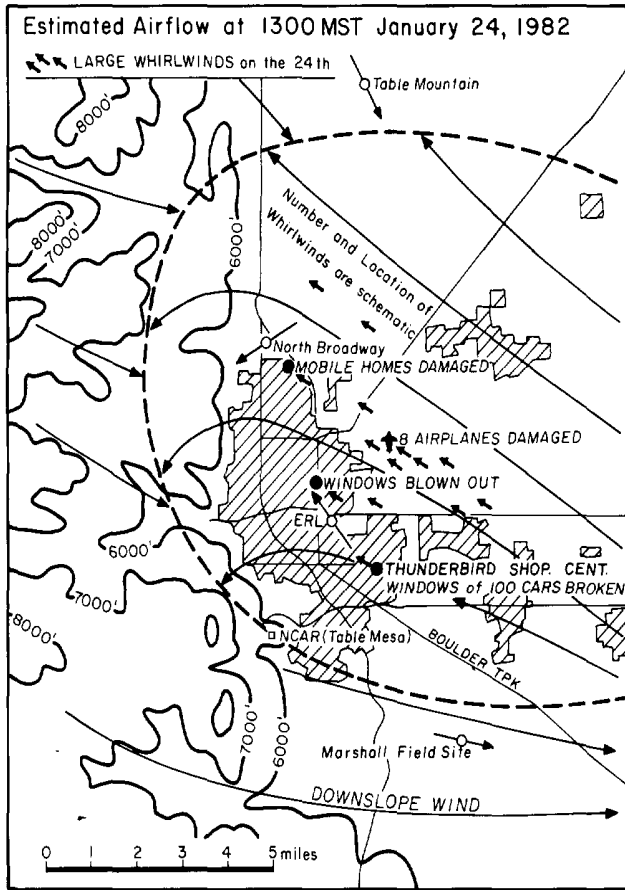


Paul Malik's house being repaired after the roof damage.



Ben Long's house was blown loose and the wall cracked.

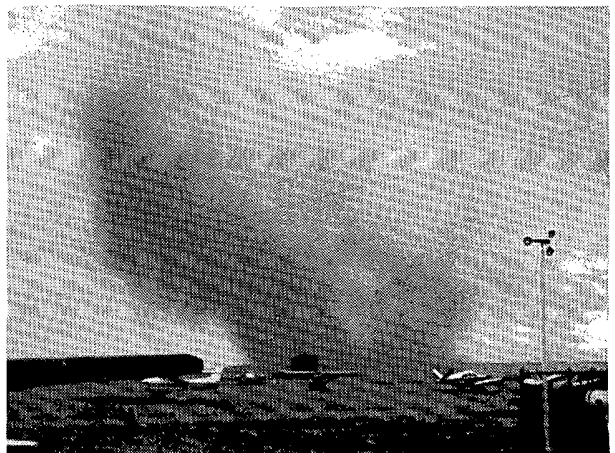
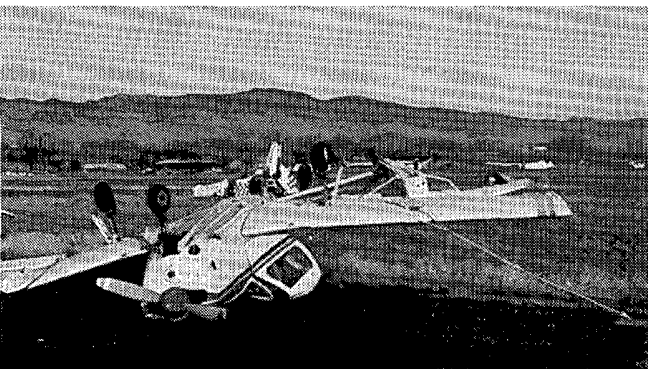
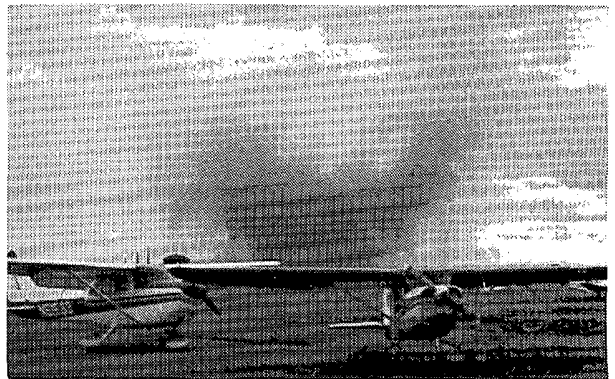
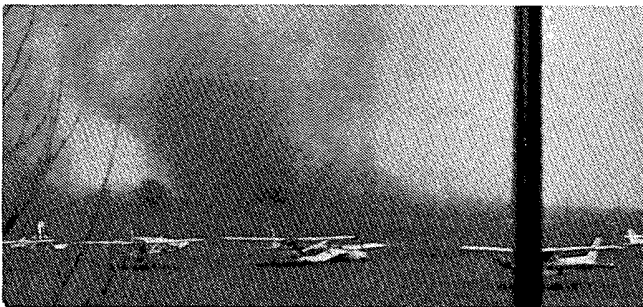
1b. CHINOOK WIND on Sunday, January 24, 1982



Large whirlwinds approaching the Boulder airport from the southeast. Photos below were taken from the airport looking southeast.



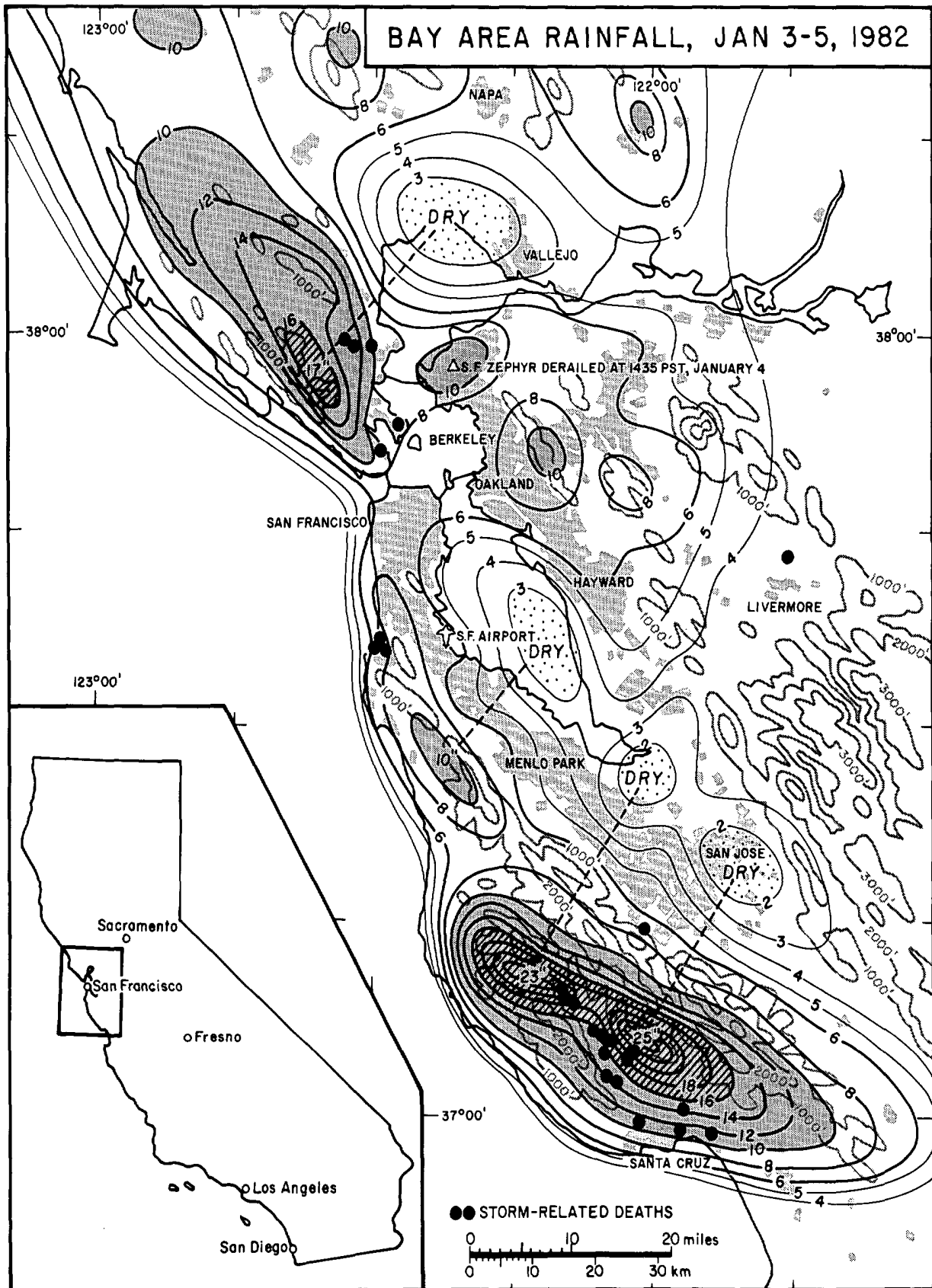
A preliminary map showing the airflow and whirlwind situations drawn on the basis of observational data collected by Ed Zipser of NCAR and Joe Golden and Al Bedard of ERL. For details contact NCAR and ERL.



Aircraft overturned by a giant whirlwind which moved across the Boulder airport.

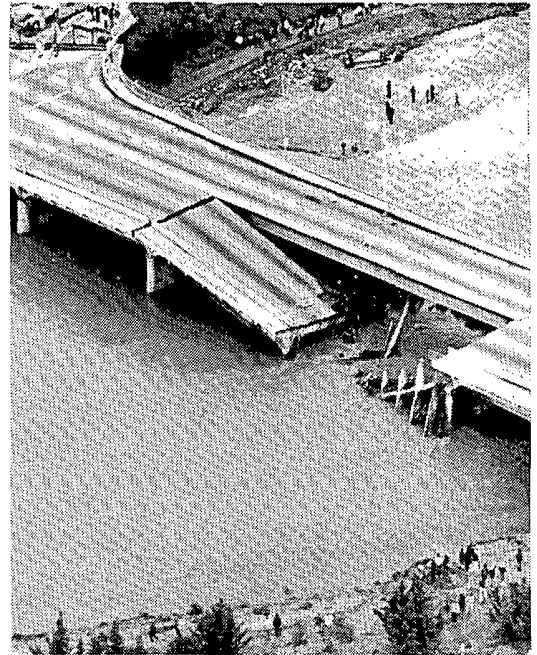
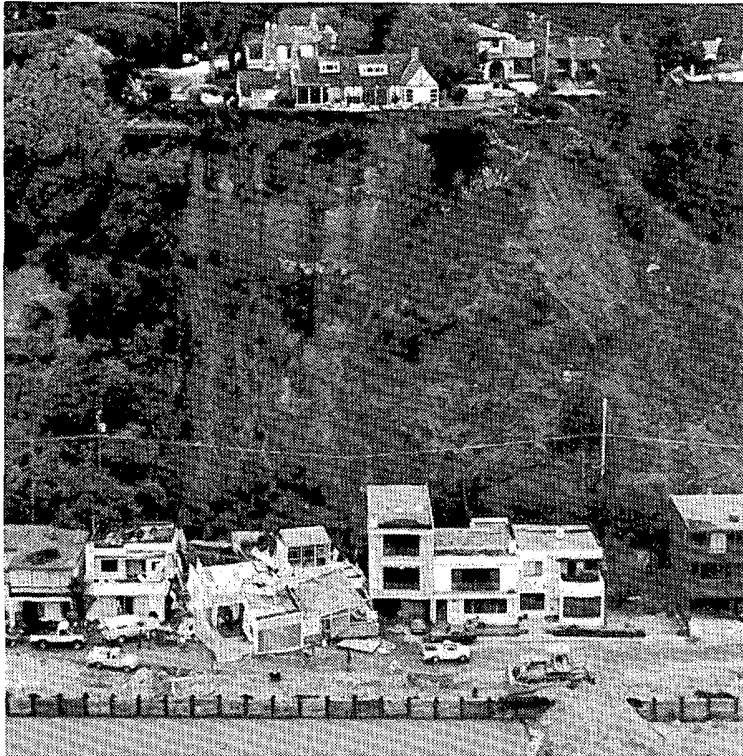
Pictures on this page were taken by J. Hutchinson, Manager of Western Flight Training, Boulder Municipal Airport.

2. RAINSTORM in the San Francisco Bay Area on Jan. 3 - 5, 1982



During the rainstorm early in January, Marin and Santa Cruz Co. received up to 25 inch rainfall, resulting in numerous deaths and damage (see next page).

RAINSTORM in San Francisco Bay Area ---- Continued

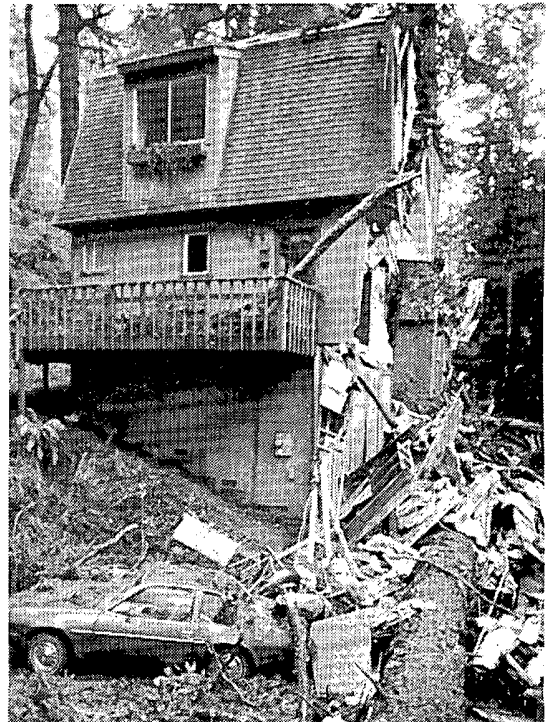


Buried car (above) and car on bank (left). Courtesy of Mr. Keith Kelsen

Three aerial photos of mud slides, a collapsed house, and a damaged bridge are courtesy of Mr. Pete Amos, The Santa Cruz Sentinel.

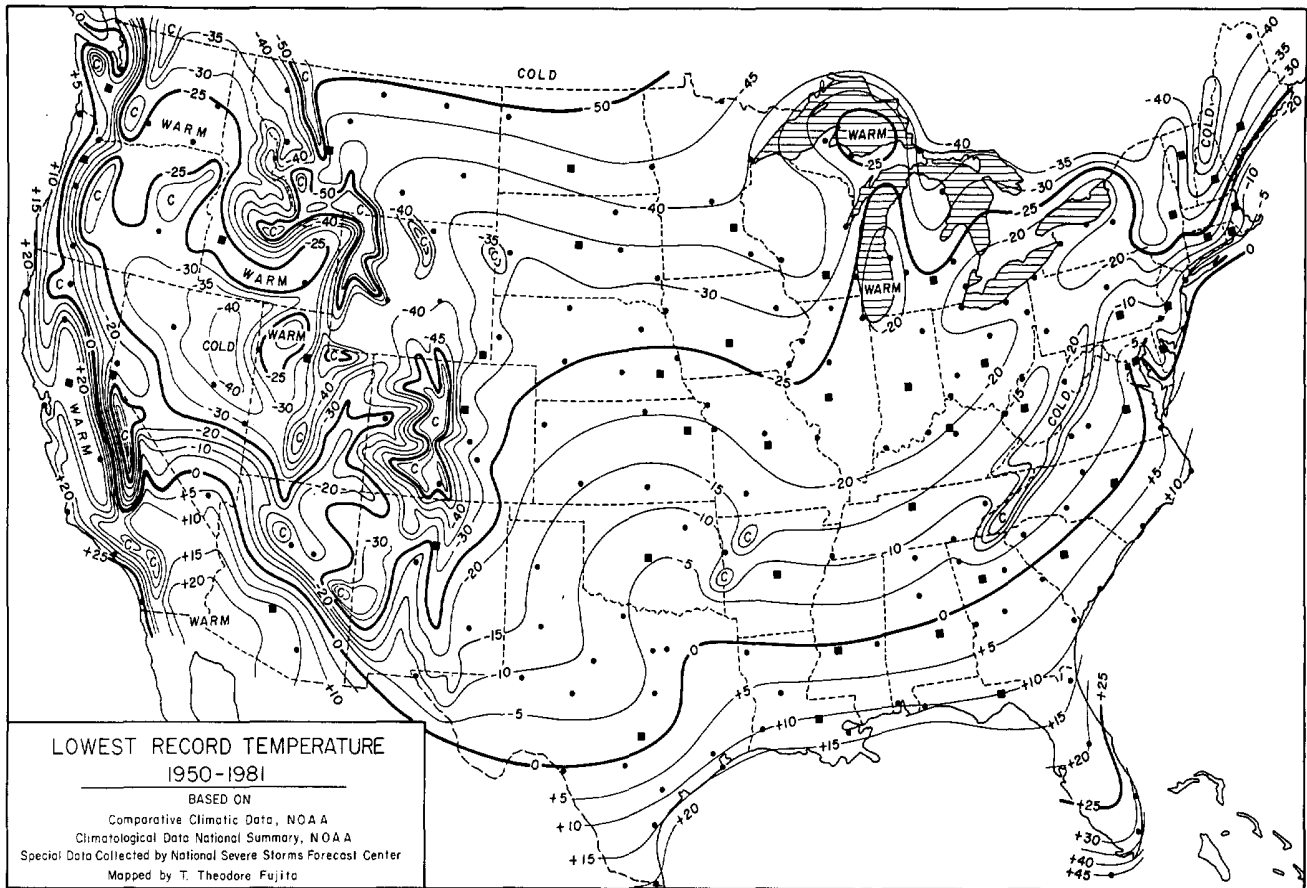


Landslide (shown with dots) which destroyed the house at Pacifica, killing 3 children. Photo by Mr. T Leslie Voud, U.S.G.S, Menlo Park, CA.

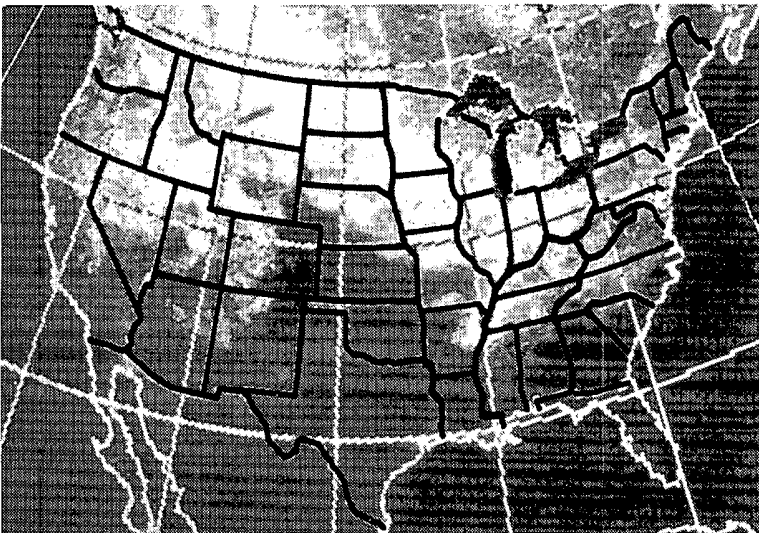


House sliced by tree. Courtesy of Mr. Don Coyro, Santa Cruz Sentinel

3. COLD WAVES in January, 1982



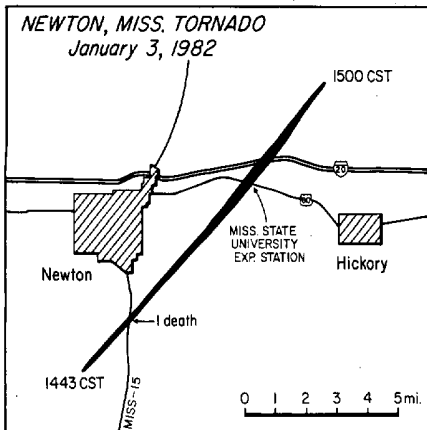
The above map shows the lowest temperature occurring before the record-breaking cold waves in January this year. The lowest temperature at Chicago (O'Hare Airport) was -26°F on Sunday, Jan. 10 and -25°F on the following Sunday, Jan. 17, 1982.



Minimum reflectivity photo of U.S. and southern Canada during 7 days between January 17 and 24 when the area was covered by deep snow after the record cold waves. This new photo produced by NESS shows the area of snow which remains white under the clear sky. Areas of water, either open or frozen, are shown as dark gray. A sudden warming in spring could cause rapid melting of the snow and ice seen in this photo, resulting in ice jams and floods (left).

A tropical garden in St. Petersburg, FL on Jan. 10 with hundreds of oil heaters ready to be ignited at sunset. Photo by T. Theodore Fujita (right).

4. Tornadoes in Mississippi and Alabama on January 3, 1982

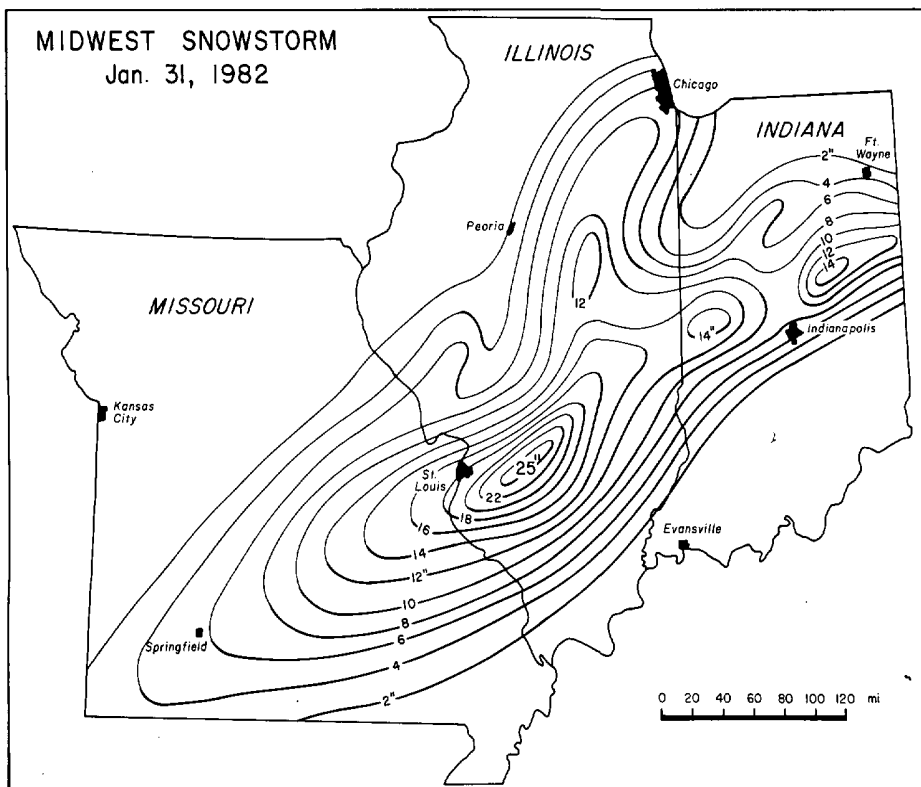


An F3 tornado near Newton, MS (see map) damaged a house at an Experiment Station (middle). Photo courtesy of The Meridian Star. An F2 tornado damaged a gas station (right). Photo courtesy of The Birmingham News.

5. THUNDERSTORM WIND in Georgia on January 4, 1982



Damaged airplanes at Warner Robins Air Park (left) and uprooted pecan trees in eastern Peach Co. (right). Photos by David Livingston, NWS at Macon, GA. supplied through John O. Laing, NWS at Atlanta, GA.



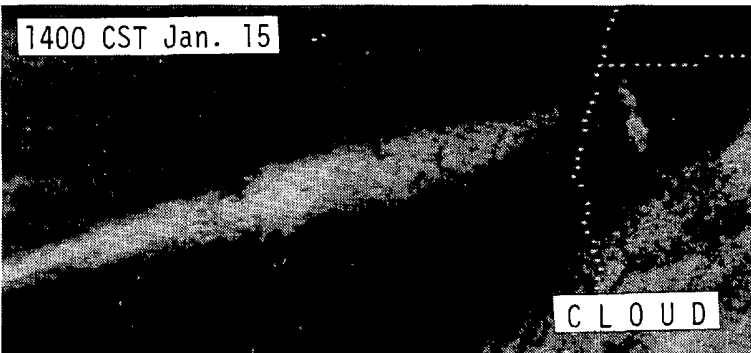
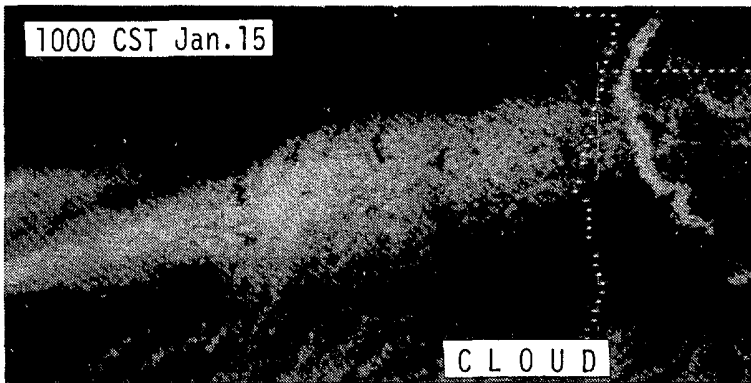
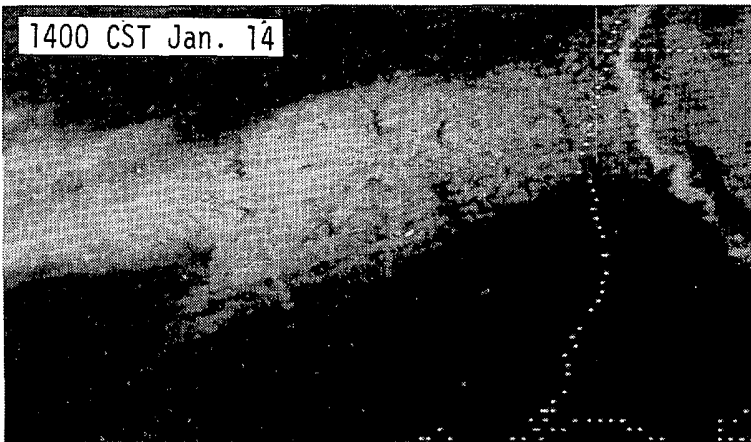
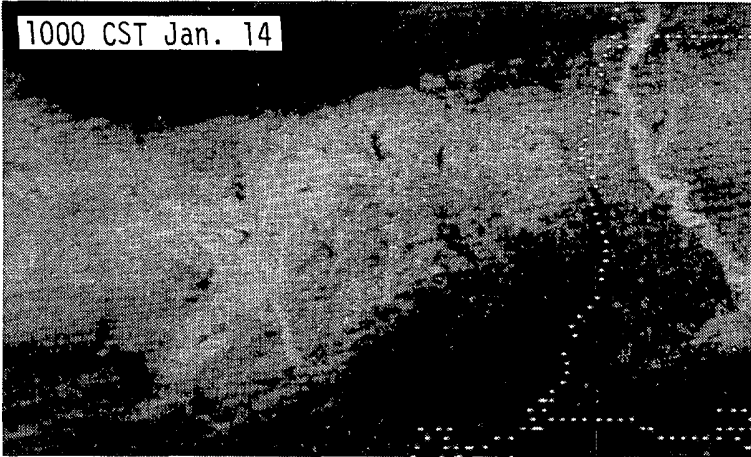
6. SNOWSTORM in Missouri, Illinois, and Indiana on January 31, 1982

The town of Greenville, IL east of St. Louis, MO was paralyzed by the 25" snow on the last day on January.

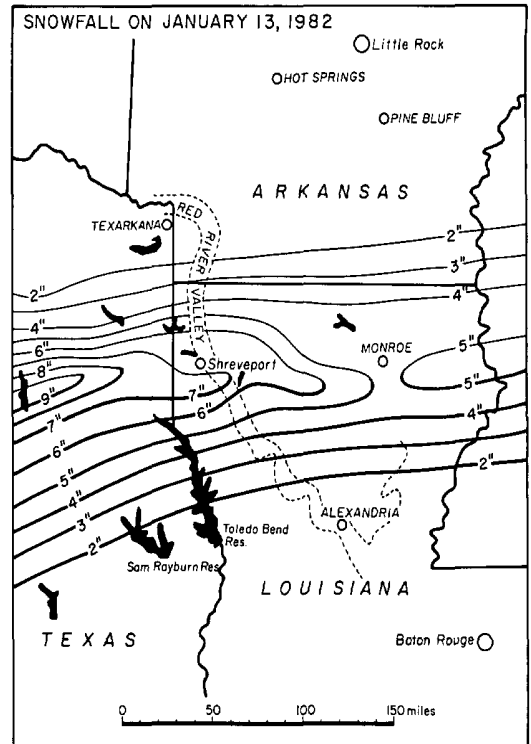
4,000 motorists were stranded for 2 days due to heavy snow and high winds.

Snowfall data was supplied by NWS offices at St. Louis, Chicago, and Indianapolis.

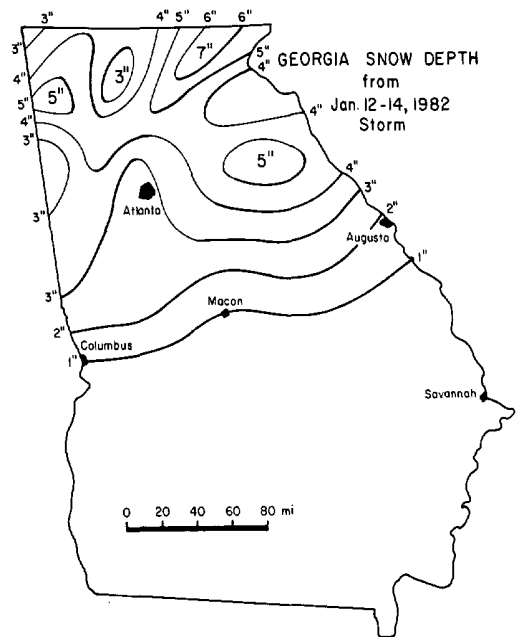
7. SNOWSTORM in southern states on Jan. 12 - 14, 1982



Four satellite pictures showing the melting of the Texas-Louisiana snow which occurred on Jan. 13. Dark spots in snow areas are lakes and resevoirs. Satellite photos were supplied by NESS office at Slidell, LA.



Snow-depth map on Jan. 13 produced by Ernest S. Ethridge, NWS at Shreveport, LA. The snow cover over the farmland along Red River appears as white bands in satellite pictures (left).



Two major snowstorms followed some of the coldest weather of the century. Snow-depth map was made by NWS at Atlanta, GA.

STORM DATA AND UNUSUAL WEATHER PHENOMENA

JANUARY 1982

PLACE	DATE	TIME - LOCAL STANDARD	LENGTH OF PATH (MILES)	WIDTH OF PATH (YARDS)	NO. OF PERSONS		ESTIMATED DAMAGE		CHARACTER OF STORM
					KILLED	INJURED	PROPERTY	CROPS	

PLACE	DATE	TIME - LOCAL STANDARD	LENGTH OF PATH (MILES)	WIDTH OF PATH (YARDS)	NO. OF PERSONS		ESTIMATED DAMAGE		CHARACTER OF STORM
					KILLED	INJURED	PROPERTY	CROPS	

ALABAMA

Lockhart area, Covington County	03 0910CST	A wood frame house was destroyed by a fire that resulted from a lightning strike.	0	0	4	0	Lightning
North Alabama	03 All day	Heavy rains produced by bands of thunderstorms moving across the area resulted in extensive flooding of small streams, roads and low areas. Some of the heaviest rains were in a band from around Vernon to Cullman and Ft. Payne and in another band from around Montevallo to Anniston. Storm totals ranged up to 9.53 inches in Vernon. Many roads were damaged and many bridges, mainly on secondary roads, were washed out. Three to four houses were flooded at Sulligent in Lamar County and water entered some buildings in the Anniston area. Lamar, Cullman, Madison, Marshall, Morgan and DeKalb Counties appeared to be particularly hard hit. The Park Ranger and his family were evacuated by helicopter from Bucks Pocket State Park as flood waters continued to rise and overland escape route was already blocked. One injury was attributed to the heavy rain when automobile left the road and overturned during a heavy thunderstorm at Hartselle in Morgan County.	0	1	6	0	Flooding
Verbena, Chilton County to southwest Coosa County	03 1618CST	A tornado touched down just west of U.S. Highway 31 and moved northeastward across part of Verbena and the Lake Mitchell area to near Kelly Cross Roads in southwest Coosa County. A service station was destroyed in Verbena along with 4 mobile homes. At least one home was damaged. Several mobile homes were destroyed and some houses were damaged in the Lake Mitchell area. Several boats were also destroyed. Damage in Coosa County was confined to trees. Although property damage was extensive, there were no deaths or injuries. Residents of the mobile homes in Verbena had moved to shelter areas before the storm hit.	15	140	0	5	Tornado (F2)
Selma area, Dallas County	03 1702CST	Funnel cloud reported over Craig Field.					Funnel cloud
Northern Autauga County to south-east Chilton County	03 1722CST	This tornado apparently first touched down in the Lily Hill Community along the Autauga Chilton County line and moved northeastward across Interstate 65 into Verbena, where it merged with the path of the tornado that had hit Verbena at 4:18PM CST. Six people were injured in the Lily Hill Community where 1 home was completely swept away and 2 others almost destroyed. Four of the injured were occupants of the home that was swept away and 3 of them were admitted to the hospital. One of the occupants landed on a truck that was parked outside the home. The others were apparently blown into an open field in front of the house. The tornado damaged buildings in Verbena. This storm forced rescue workers that were checking on damage from the 4:18PM tornado to take cover and not only was it the second tornado to strike Verbena in a little more than an hour, but was 1 of 3 that were on the ground in the area at about the same time. A second tornado crossed Interstate 65 three miles to the south at almost the same time as this storm, while a third tornado touched down briefly just west of Clanton. These storms are described below.	8	80	0	5	Tornado (F2)
Northeast Autauga County	03 1725CST	A small tornado crossed Interstate 65 about 3 miles south of the Verbena exit in northeast Autauga County. Some cars had minor damage but apparently escaped the full force of the storm that cut a path through the forest on both side of the highway as it moved northeast.	1 1/2	75	0	3	Tornado (F1)
Clanton area, Chilton County	03 1730CST	A mobile home was destroyed and a house damaged by a mini tornado that briefly touched down about 1 1/2 miles west of downtown Clanton. Four persons were injured.	0	4	4	0	Tornado (F1)
Statewide	03 - Evening 04 to early morning	Following bands of thunderstorms that had already produced tornadoes over Central Alabama and flooding in the northern part, wind damage that ranged from minor to major was scattered throughout the state as another band of thunderstorms moved southeastward during the night. Reports of major damage follow.					Thunderstorms
Colbert Heights, Colbert County	03 2050CST	Spotter reported hail to baseball size. No damage reported.					Hail

ALABAMA

Russell County	03 2120CST	Funnel cloud reported 8 miles southwest of Phenix City accompanied by loud roaring sound and trees bending over.	0	0	0	0	Funnel cloud
Robinsonville area, Escambia County	03 2200CST	One worker was seriously injured and 4 others suffered minor injuries when strong winds toppled a workover oil rig. The 105 ft. high rig landed across a pump truck and caused additional damage to the well head and pipe rack.	0	5	5	0	Wind
Walker County	03 2200CST	Two mobile homes were destroyed in the Jasper area and some store-front windows were shattered as thunderstorm winds swept across Walker County. Some trees were blown onto houses and utility lines were downed.	0	0	4	0	Wind
Simcoe area, Cullman County	03 2240CST 1/2	A service station, mini market and a mobile home were completely destroyed and other property was extensively damaged when a tornado touched down briefly in Simcoe.	100	0	0	5	Tornado (F2)
Arab area, Marshall County	03 2245CST 2 1/2	A tornado touched down near Highway 69 northeast of Arab and damaged homes, outbuildings, trees and utility lines in the area. One house was unroofed and blown off its foundation. The couple that owned the house were awakened by the sound of the roof cracking. The husband suffered a cut on the head and a broken collar bone when hit by a falling piece of lumber. An oddity of the storm was the complete disappearance of a "huge" magnolia tree believed to be at least 20 years old from the yard.	100	0	1	4	Tornado (F2)
Gurley area, Madison County	03 2250CST	Three people were injured when thunderstorm winds destroyed one mobile home and damaged another in the Gurley area.	0	3	4	0	Wind
Blount County	03 2310CST	One person was injured when thunderstorm winds destroyed a mobile home in the Mount Hebron Community. Mostly minor wind damage to trees, utility lines and outbuildings was scattered throughout the county as a line of intense thunderstorms moved southeastward.	0	1	4	0	Wind
Fyffe area, DeKalb County	03 2320CST	Thunderstorm winds destroyed an equipment shed.	0	0	3	0	Wind
Monroeville, Monroe County	03 2345CST 1	A small tornado briefly touched down in Monroeville. Two buildings at a lumber yard were destroyed and a concession stand at a nearby park was heavily damaged. Electric power was also knocked out in the area.	1	40	0	4	Tornado (F1)
Dothan area, Houston County	07 1400CST 1	A small tornado touched down east of Dothan just south of U.S. 84 near Cowarts. At least 15 homes had roof damage, a dairy building was damaged, and a tractor trailer was overturned. Several mobile homes were damaged and one completely demolished by a falling tree. Residents of the mobile homes had taken shelter before the storm hit. Wind damage to some store windows occurred in Dothan and hail to golf ball size was reported in the area.	1	50	0	4	Tornado (F1)
Statewide	10-18	It began on January 10th with an invasion of arctic air that sent temperatures to below zero over the north and central counties and to less than 10 degrees over most of south Alabama by early morning of the 11th. After one of the coldest mornings of the century on the 11th, a crippling ice and snow storm moved into western Alabama during the early morning of the 12th and spread eastward over the state during the day. The ice accumulated rapidly on the extremely cold surfaces. Traffic soon came to a virtual halt especially in north and central Alabama.	20	300	7	7	Winter storm

Although businesses and schools dismissed early, the task of reaching home took several hours for many people. In the Birmingham area, where freeways became impassable in a short time, other routes were clogged with bumper to bumper traffic.

STORM DATA AND UNUSUAL WEATHER PHENOMENA

JANUARY 1982

PLACE	DATE	TIME - LOCAL STANDARD	LENGTH OF PATH (MILES)	WIDTH OF PATH (YARDS)	NO. OF PERSONS		ESTIMATED ¹ DAMAGE		CHARACTER OF STORM
					KILLED	INJURED	PROPERTY	CROPS	

PLACE	DATE	TIME - LOCAL STANDARD	LENGTH OF PATH (MILES)	WIDTH OF PATH (YARDS)	NO. OF PERSONS		ESTIMATED ¹ DAMAGE		CHARACTER OF STORM
					KILLED	INJURED	PROPERTY	CROPS	

ALABAMA

The ice tore down tree limbs, trees and powerlines as it accumulated on exposed surfaces. Power outages, that would last several days in some areas, became widespread over the state but the north and central sections were hardest hit. The precipitation continued on the 12th and generally consisted of freezing rain although some snow persisted in the extreme north and temperatures moderated enough in parts of the extreme south for the precipitation to fall as rain. After some improvement during the morning and early afternoon of the 13th, a major snow storm hit much of the state during the late afternoon. With many homes already without heat and travel very difficult, if not impassable, the situation became even more critical over the north and central areas where the second storm dumped 1 to 4 inches of snow onto the ice.

The snow storm was followed by another blast of arctic air that sent temperatures to back below zero again over north and central Alabama in the early morning of the 17th and into the teens over south Alabama.

In Birmingham, it was the first time since records began in the 1880's that the temperature dropped below zero twice in one winter and was only the 5th time on record to have below zero temperatures. The 18th brought moderating temperatures and rapid improvement in conditions, but the arctic air, ice and snow had left behind their grim statistics.

At least 20 deaths, 300 injuries and 16,000 people were forced into emergency shelters. 8,000 homes were damaged with frozen water pipes. 25 businesses and 10 schools were damaged. There was also extensive damage to roads, forests and agricultural interests. Storm damage was estimated at about 78 million dollars.

Red Bay, Franklin County	23 0048CST	0	0	5	0	Hail
						Police reported marble to golfball size hail. No damage reported.
North and central Alabama	23 0220CST					Flooding
						Thunderstorm rains produced extensive flooding of streams and low areas during the morning.

2 ARIZONA

Phoenix Maricopa County	12 1630MST	0	0	5	0	Lightning
						A severe lightning strike caused a fire that did \$150,000 damage to a home and also ruptured a natural gas pipe line.
Tucson Pima County	21 Afternoon	0	0	5	0	Wind
						Winds gusting to over 50 mph downed power lines and damaged roofs, signs, mobile homes and trees.
Douglas, Sierra Vista Cochise County	21 Afternoon	0	0	5	0	Wind
						Winds gusting to over 50 mph damaged mobile homes, house roofs, power lines, store windows, fences and trees.

3 ARKANSAS

Salem, Fulton County	02 1000CST	0	0	3	0	Lightning
						A shop building and contents were totally destroyed in flames when struck by lightning.
Capps, Boone County	03 0930CST	0	0	?	0	Lightning
						Lightning knocked out the Boone County Rural Fire Association radio tower degrading access to district fire chiefs.
Ashley, Bradley, Jefferson, Lincoln, and Union Counties	03 1445 - 1630CST	0	0	5	0	High Winds/Hail
						Thunderstorms intensified over central and south-central Arkansas and moved rapidly eastward causing numerous reports of high winds and hail. No hail damage was reported. Wind damage mainly in the Hamburg to Crossett area of Ashley County involved a mobile home destroyed at Hamburg and damage to outbuildings at many homes. A number of trees were blown down blocking roads, breaking power lines, and damaging at least one home. Hail up to golf ball size at the beginning of the storm in Crossett tapered off to pea size. Quarter size hail fell just north of Warren in Bradley County. Marble size hail was reported 3 miles north of Crossett, 10 miles north of Pine Bluff (Jefferson County), south of Star City (Lincoln County), and at Felsenthal (southeastern Union County). Small hail also occurred as far west as Camden in Ouachita County. Wind damage was estimated near forty thousand dollars to private property plus timber and power line damage.

ARKANSAS

3 Miles South of Stuttgart, Arkansas County	03 1540CST	0	0	4	0	High Winds
						Winds from a severe thunderstorm damaged a grainery and an equipment building, shifted the roof of a concrete block storage building, destroyed a carport, and peeled nearly half the roofing off the home on one farm. A small storage shed was rolled over at another home site. One home in the town of Stuttgart also was damaged.
8 Miles East-North-east of Marianna, Lee County	03 1645CST	0.2	10	0	0	Tornado (F0)
						A weak, short-lived tornado at the Soudan Plantation caused roof and window damage to three houses and demolished a mobile home.
Helena, Phillips County	03 1715CST	0.5	15	0	0	Tornado (F1)
						A severe thunderstorm produced strong gusty winds over much of the area around Helena. At least one of three funnel clouds touched down briefly. Straight line winds caused most damage along and south of Highway 49 near West Helena. Damage estimates included \$100,000 to a grain elevator five thousand dollars to roof and windows of a grocery store, and fifteen thousand dollars to equipment at the John Deere Co. The skylight in Phillips County Courthouse and a window in a bank were broken in downtown Helena.
All of Arkansas	10 thru 12	1	?	6	0	Unusual Cold
						A strong arctic outbreak moved rapidly over the state on Sunday, the 10th, resulting in record breaking low temperatures in many areas on the 11th. Water pipes froze and burst in numerous homes, schools, businesses, and public buildings resulting in tremendous water damage. Several areas experienced temporary electric power outages. Also, gas pressure was briefly too low to operate central heating systems in a number of places. The cold forced many schools and some industries throughout the state to not operate the 11th and 12th.
						One death was partially due to the cold as a 77 year old man was found in his small trailer with the butane heater shut off.
Hot Springs, Garland County	22 1522CST	2.5	20	0	1	Tornado (F2)
						A ropelike tornado started at the fairgrounds then moved northeastward leaving a narrow, skipping type damage path during its five minute lifespan. One wall of a Wal-Mart Department Store collapsed. About ten automobiles were tossed about, stacked up, and overturned. Buildings in a residential area just northeast of the department store received minor damage. Several trees were also damaged or uprooted. A department store employee suffered a wrist fracture.
Hope, Hempstead County	22 1605CST	0	0	3	0	High Winds
						Winds produced by thunderstorm caused minor damage to roof of one building and to power line at Hope airport.
Western Saline County	22 1617CST					Funnel Cloud
						Deputy Sheriff saw large funnel cloud near Owensville.

4 CALIFORNIA, Northern

Sierra Nevada Northern mountains Northern Sacramento Valley and SFO Bay area	2 1800PST 3 1000PST	2	4	0	0	Winter Storm
						Gusty winds along the coast...2 to 4 feet of snow in the mountains. 8 inches of snow northern Sacramento valley at 800 ft and snow in the Bay Area Hills down to 1000ft.
SFO Bay area Marin County Santa Cruz County Sierra Nevada	3 1800PST 4 2000PST	36	1078	8	4	Winter Storm Mesoscale flood situation
						Gusty winds along the coast...4 to 8 feet of snow in the Sierra Nevada...stranded people for up to 5 days. 28 to 30 hours of continuous mod to heavy rain. Between 3 1/2 to 24 inches of rain fell over the Bay Area and Santa Cruz county.

4 CALIFORNIA, Southern

Mono and Inyo County	4-5 20-21	0	0	0	0	Winter Storm
						Two major winter snow storms presented many problems in the Bishop, Mammoth area. Bishop reported 12 inches of snow and Mammoth 5 feet of snow in the city. Roads and schools were closed for several days. Strong winds throughout the month caused numerous closures at the Mammoth Airport.
San Diego County	9 evening	0	0	0	0	High Winds
						San Diego WSO reported Winds Easterly 60-70 mph in the pass East of Alpine.

STORM DATA AND UNUSUAL WEATHER PHENOMENA

JANUARY 1962

PLACE	DATE	TIME - LOCAL STANDARD	LENGTH OF PATH (MILES)	WIDTH OF PATH (YARDS)	NO. OF PERSONS				ESTIMATED DAMAGE	CHARACTER OF STORM
					KILLED	INJURED	PROPERTY	CROPS		
CALIFORNIA, Southern										
Los Angeles County	20	0100 PST			0	1	unk	0	0	Damaging Wind Storm
<p>A freak wind storm struck Hacienda Heights, about 2 1/2 miles ENE of Los Angeles Airport or 16 miles ESE of Downtown Los Angeles. Storm moved from WSW to ENE. It ripped roof shingles from 6 or 7 homes...knocked down about 20 trees...some up to 2 feet in diameter at ground level. Also blew down heavy air conditioning unit from roof of school. Path about 3 to 4 blocks long and about one street width. Substantial damage to power lines. One teenager injured as tree blown through bedroom window.</p>										
Riverside County	20	0205 PST			0	0	unk	0	0	Tornado (F1)
<p>A small tornado struck within Riverside City limits. Noise from storm described as loud humming sound awakened residents and funnel cloud was seen touching down by 2 eyewitnesses. Damage was restricted to about 1 square block as storm moved west to east. One home severely damaged as large tree was blown into side of house. Nearby houses had roof damage and broken windows. No injuries and no dollar estimate of damage.</p>										
Santa Barbara County	20	1100 PST			0	0	0	0	0	Hail
<p>Hail reported on highway between San Barbara and Buellton (thru San Marcos Pass) causing several accidents.</p>										
Santa Barbara County	20	1215 PST			0	0	0	0	0	Hail
<p>Hail 1 inch to 1 3/4 inch diameter reported in Santa Barbara and between Santa Barbara and Goleta. (reported by Skywarn Spotter)</p>										
5 COLORADO										
Northeastern Foothills	3/4				0	0	0	0	0	High Winds
<p>85 mph winds were recorded in the Table Mesa section of Boulder. A gust of 82 mph was clocked at the Colorado State University Foothills campus west of Fort Collins. A few power failures were reported.</p>										
Statewide	5/6				1	0	0	0	0	Snow, cold
<p>Snow fell over almost the entire state. Many mountain towns were really buried; Steamboat Springs received 23 inches of new snow in 24 hours, culminating a three week period during which 125 inches of snow fell. 22 inches buried Crested Butte in 24 hours, with 12 to 20 inches at many other spots. During the blizzard, a bulldozer operator was killed when the machine he was driving fell into a ravine near Silverton. The snow hit cities at lower elevations too; 2 to 6 inches fell in Denver, Colorado Springs, and Grand Junction. When skies cleared, the mercury plummeted to 27 below zero at Eagle, 30 below in Craig, and 50 below at Taylor Park, in a mountain valley north of Gunnison.</p>										
Northeastern Foothills	14				0	4	4	0	0	High winds
<p>Chinook winds of up to 104 mph buffeted Boulder, tearing the roof off of a small apartment building. A gust of 88 mph was measured in Lakewood, with 60 to 80 mph gusts at other spots from Denver to Fort Collins. Four people sustained minor injuries during the windstorm, mostly from flying glass, though at least one person was knocked down by the gusts. Several tractor trailer rigs were blown over on interstate 70 near Golden, and numerous camper shells were blown off.</p>										
Northeastern Foothills	16/17				0	15	7	?	?	High winds
<p>One of the worst windstorms in many years hit the northeastern foothills, with Boulder bearing the brunt of the damage. Chinook winds began late on the night of the 16th and howled all morning on the 17th before abating in the afternoon. The peak gust recorded was 137 mph at 230 am on the 17th at the National Center for Atmospheric Research (NCAR), on a mesa just southwest of Boulder. 20 gusts of over 120 mph were clocked at NCAR between 1 and 9 am. An estimated 40 percent of all buildings in Boulder received at least minor damage; about 50 homes were damaged badly enough to be uninhabitable.</p> <p>The wind did some strange things. In one instance, a gust completely unroofed a home; the roof sailed over two adjacent houses and landed on a third. The Boulder airport was especially hard hit by the storm. About 20 small planes were destroyed, and two others at the Longmont airport met a similar fate. Most injuries were caused by flying debris, but one woman broke her hip when she was blown out of her trailer. Utility poles were snapped in two, and about one seventh of the buildings in the area were without power. The wind also caused erosion damage to about 50 thousand acres of farmland in Boulder county.</p>										
COLORADO										
Northeastern Foothills	22/23				0	0	0	0	0	High winds
<p>Other wind speeds recorded included 136 mph at Lyons, 20 miles north of Boulder; 120 mph at Buckhorn Mountain, west of Fort Collins; 113 at Wondervu, in the foothills southwest of Boulder; and 104 mph at CSU in Fort Collins. Damage estimates are not complete, but the total will be at least 10 million dollars in Boulder County, with relatively minor damage elsewhere along the foothills.</p> <p>Wind gusts up to 101 mph were clocked at Wondervu; 60 to 80 mph gusts blew at several other spots in and near the foothills from Boulder to Fort Collins.</p>										
Northeastern Foothills	24				0	4	6	0	0	High winds
<p>Fort Collins escaped the brunt of the windstorm a week earlier, but the city was hit hard this time. Winds of up to 140 mph blew in the foothills west of the city, with gusts of 80 to 100 mph in town. Several trailers were blown apart in the area, and at least two homes were completely unroofed. 15 to 20 power poles were snapped in two by the howling chinook. One man was hospitalized with a broken back after being blown off the roof of his home. Blowing dust in the area reduced visibility to near zero. At Horsetooth Reservoir west of town, seven boats were severely damaged.</p> <p>Boulder escaped the worst effects of this windstorm, but nonetheless several hundred thousand dollars of damage occurred in the area. Nine more planes were damaged at the airport, along with four mobile homes and many cars.</p> <p>Heavy roof damage was also reported in Estes Park. West of Denver, Gilpin County was buffeted by the storm; a school in Central City was partially wrecked. South of Denver, a water tank in Parker collapsed. The winds extended as far south as Victor, in the mountains west of Colorado Springs; 100 mph gusts there dislodged a home from its foundation and damaged roofs on nearly half the buildings in town. The strongest wind gust recorded was 140 mph at Wondervu, a record for that normally windy spot. speeds reached 125 mph at Buckhorn Mountain, 110 at Waverly, north of Fort Collins, and 92 at Boulder.</p>										
Larimer County	26				0	0	4	0	0	High winds
<p>A wind gust unroofed a building near Estes Park, causing \$7000 damage. Gusts were estimated at up to 100 mph during the day.</p>										
Mountains	31				0	0	0	0	0	Heavy snow
<p>8 to 15 inches of snow fell in many mountain areas. The snow was especially heavy in the foothills southwest of Pueblo, where schools were closed.</p>										
6 CONNECTICUT ————— NONE REPORTED										
7 DELAWARE										
Newcastle County	3-4				0	0	4	0	0	Rain, Wind
<p>Rain in advance of a cold front brought totals in excess of an inch-and-one-half, occurring from late on the 3rd into the morning of the 4th. Flooding affected three highways, especially at underpasses. Winds associated with the cold frontal passage gusted to around 40 mph on the morning of the 4th..at the time that a 200-ft long cinderblock wall, at a construction site, fell over.</p>										
Statewide	9-11				2	0	0	0	0	Cold Outbreak
<p>Very cold weather moved into the state over the weekend, with lows at Wilmington setting back-to-back records on the 10th and 11th. Frozen water pipes were common. Firemen were hampered by ice formation and the freezing-up of their self-contained breathing apparatus. On Delaware Bay, two Bowers Beach men perished while on a crabbing voyage. Although they were wearing life belts, the temperature of the water allowed only very short survival time. It is believed that ice flows caused their 40-foot boat to sink about a mile offshore.</p>										
Northern	13	All Day			0	0	0	0	0	Snow
<p>Extensive snowstorm brought 4 to 6 inches of snow over the northern third of the state. To the south, snow changed to rain following wind accumulations of 2 inches or less.</p>										
Southern	14-15				0	0	0	0	0	Snow
<p>Another in a series of low pressure centers moved out of the southeastern portion of the nation. This time the distribution of new snow was reversed. From 4 to 7 inches fell upon Kent and Sussex Counties, while lesser amounts (1 to 3 inches) fell over northern third, from afternoon of the 14th thru early morning of the 15th.</p>										

STORM DATA AND UNUSUAL WEATHER PHENOMENA

JANUARY 1982

PLACE	DATE	TIME - LOCAL STANDARD	LENGTH OF PATH (MILES)	WIDTH OF PATH (YARDS)	NO. OF PERSONS		ESTIMATED ¹ DAMAGE		CHARACTER OF STORM	
					KILLED	INJURED	PROPERTY	CROPS		
DELAWARE										
Statewide	16-18				0	6	0	0	Cold	Severe cold gripped the region for the second straight weekend. Frozen or broken water lines again were a problem as the mercury dipped to 10 below zero at Greater Wilmington Airport on the morning of the 17th. This was a new record low for the month of January, breaking the old record of 6 below set in 1935. At Cheswold sub-zero temperatures and wind made control of a large warehouse fire difficult. Several firemen had to be treated for exposure following up to 12 hours in the fierce cold.
Southern	21				0	0	0	0	Snow	Combination of a low moving out of the Ohio Valley and another low off the mid-Atlantic coast brought 3 to 5 inches of snow to the southern half of the state. Snow began in the early morning and ended by early afternoon. In the northern half, 1 to 3 inches of new snow was reported.
8 FLORIDA										
Florida Peninsula	14	0200-1200 EST			0	0	5	0	High Winds	A strong cold front sweeping across the Florida Peninsula was accompanied by high winds and brief heavy rains. Sustained winds of 30 to 40 mph were reported over most of the peninsula with gusts up to 60 mph observed. There was widespread minor damage with downed power lines, large trees toppled, and numerous signs blown over. Some roof damage was also reported along with damage to patio screens, carports, and tool sheds. Heaviest damage appeared to be along the Florida West Coast where onshore winds were not only stronger, but produced high tides and some beach erosion. The total damage is difficult to estimate. A rough estimate is between \$50,000 and \$100,000.
Lee County	14	0910 EST	1.0	100	0	0	5	0	Tornado(FI)	A tornado moved on a one mile track through Lehigh Acres (located 15 miles east of Fort Myers). The tornado skipped over Lehigh Elementary School and the Homestead Shopping Center. Several houses sustained major damage. A mobil home was demolished and several more had heavy damage. Trees, power lines, and tool sheds were blown over along the tornado path. Damage estimates were around \$150,000.
Hendry County	14	1030 EST	0.3	25	0	0	4	0	Tornado(F0)	A small tornado struck a mobile home park about 7 miles south of Labelle. Two small mobile homes were destroyed and three sustained damage. Total damage was estimated to be \$12,000.
9 GEORGIA										
Extreme northwest Georgia	03-04	Afternoon through early morning			1	0	4	0	Flash Flooding	Thunderstorms dropped up to seven inches of rain in northwest Georgia, causing many small streams to overflow their banks and wash out a few bridges and secondary roads. Several mobile homes in Ellijay (Gilmer County) were flooded. A 4-year-old boy was swept away by rain-swollen Chattanooga Creek in Walker County.
Clay County	03	2358EST			0	0	4	0	Wind	Thunderstorm winds damaged a shop building and a barn in the community of Suttons Corner.
Cherokee County	04	0235EST	0.1	20	0	0	5	0	Tornado (F1)	A small tornado briefly touched down at the Canton Airport. The Cherokee County Civil Defense Director surveyed the damage and reported that a 55 x 85 foot hangar and two small airplanes parked in the hangar were heavily damaged.
Peach and Houston Counties	04	0530EST			0	2	6	5	Wind	Dozens of pecan trees were downed by strong thunderstorm winds in eastern Peach County near GA 96. Two minor injuries occurred when a mobile home was buffeted by the winds. Shortly thereafter these storms caused extensive damage at the Warner Robins Air Park near GA 96 south of Warner Robins. A tin hangar and 25 small aircraft parked in the hangar were heavily damaged. Several homes in the two counties were slightly damaged by the winds.
GEORGIA										
Sumter and Lee Counties	04	0600EST			0	0	5	0	Wind	More than 20 trees were downed by thunderstorm winds. A house in Sumter County was extensively damaged when a tree fell onto it. A greenhouse filled with tomato plants was demolished.
North Georgia	12-14	12/afn. through 14/afn.			0	0	?	0	Winter Storms	Two major winter storms struck the northern half of Georgia during the period 12-14 January. The storms followed some of the coldest weather of the century on January 11 as temperatures fell as low as 9 degrees below zero in extreme north Georgia. During the afternoon of January 12 a winter storm moved into north and central sections of the state, rapidly paralyzing much of the area with a combination of snow, sleet, and freezing rain. Travel quickly became hazardous; as highways became hopelessly clogged with traffic, thousands of motorists abandoned their cars. Governor Busbee declared a state of emergency for the north half of the state. Accumulations through the morning of the 13th were generally in the 1 to 2 inch range. The second storm began around sunset on the 13th with a band of freezing rain across north central Georgia. This was followed on the morning of the 14th by a wide band of moderate to occasionally heavy snow that swept across the north and central counties from the northwest. When the storm ended on the afternoon of the 14th, the north half of the state was covered with 1 to 5 inches of snow and ice. It was impossible to calculate the exact cost of the storms' damages.
10 IDAHO										
Benewah, Latah Counties	23	0500 - 1800 MST			0	0	5	0	Heavy Snow, Wind	Heavy snowfall and strong winds caused damage to several out-buildings and storage sheds. Near Moscow, Latah County, a 80 x 200 ft. steel building collapsed. The building, a horse arena used by many horseback riders, could not be rebuilt for under \$150,000.
11 ILLINOIS										
Entire state	9-10				0	0	7	?	Cold & Snow	New minimum temperature records were set in many sections of the state as readings dropped to 27 degrees below zero in the north. The Dresden flood control gates near Joliet, Will County, froze shut causing the Kankakee and Des Plaines Rivers to rise to flood stage. Moderate snow, mainly in the central portion, together with strong winds made travel nearly impossible. Many roads had to be closed in this area and power lines were blown down.
Rockford, Winnebago County	19	morning			0	0	3	0	Snow	Heavy snow accumulated on a hotel roof which depressed a gas pipe. The rupture caused an explosion and a fire.
Southern half	30				0	0	7	?	Snow & Flooding	As much as 2 feet of snow fell in the south and central portions of the state closing many highways. About 4,000 persons were stranded for as much as 2 days on highways. Sections of Illinois were without power due to the heavy snow and high winds. Some roofs collapsed due to the weight of the snow. In Paris, Edgar County, 7 greenhouses were destroyed when their roofs collapsed killing thousands of plants. In the extreme south as much as 6 inches of rain caused rivers and creeks to rise above flood stage. The flooding of low-lying areas caused damage to buildings and 20 people were evacuated from their homes in West Frankfort, Franklin County, due to rising water. The snow and heavy rain ended on the 31st.

STORM DATA AND UNUSUAL WEATHER PHENOMENA

JANUARY 1982

PLACE	DATE	TIME - LOCAL STANDARD	LENGTH OF PATH (MILES)	WIDTH OF PATH (YARDS)	NO. OF PERSONS		ESTIMATED DAMAGE		CHARACTER OF STORM
					KILLED	INJURED	PROPERTY	CROPS	
12 INDIANA									
St. Joseph & Elkhart Counties	04	1030EST	--	--	0	0	3	0	Wind damage
									Strong gradient winds increased from near sunrise - 68 mph wind reported at Elkhart Municipal Airport. Damage was to two television antenna towers.
Northern Indiana	09-10	0700EST	--	--	1	70	5	0	Heavy snow and blizzard conditions
									Total snowfall averaged 11-12 inches with isolated depths of 18 inches in LaPorte and North St. Joseph Counties. There were numerous traffic accidents. One death occurred - an elderly man ventured away from his home in Kosciusko County, became disorientated and died of hypothermia. Over 50 cases of frostbite were reported due to windchill of 60 to 65 degrees below zero.
South Central Indiana	13	1200EST	--	--	0	0	0	0	Heavy snow
									Four to six inches of snow fell overnight. Main counties affected were Sullivan, Clay, Greene, Owen, Monroe, Brown, and Lawrence.
Northern Third of State	15-16				0	0	0	0	Blizzard
									A mixture of sleet, snow, and high wind struck the northern third of the state. Two to four inches of snow with bitterly cold temperatures occurred. Wind chill readings were in the -60° F. range. Blowing snow frequently reduced visibilities to less than 1/2 mile. Interstate 65 as well as state and county roads were closed to all traffic due to drifting snow.
Northeast and Central Indiana	23	1000EST	--	--	0	4	0	0	Ice
									Freezing rain produced extremely icy roads. All bus service was halted in Indianapolis due to road conditions.
North + Central	23-31								Other
									Roofs on buildings collapsed in Indianapolis and Muncie due to the weight of the snow and ice. Some had over two feet of snow on the roof.
Northeast Indiana	31								Heavy snow - 8 to 14 inches in depth. Heavy snow
Southern Indiana	22-23				0	0	0	0	Flooding
									Heavy rain heavily saturated the soil and poor drainage caused flooding in the low areas, especially urban. Some highways were closed. Small creeks were flooded and large creeks were bankfull.
13 IOWA									
South and East Iowa	0100-02	1700CST			0	0	4	0	Heavy Snow, Glaze
									An area of snow entered Southwest Iowa shortly after Midnight and moved northeast across the State. Four-inch snowfall was common with Central and North-Central Iowa receiving 5 to 8 inches. The snow was followed by freezing rain over Southern Iowa which caused a widespread glaze.
Statewide Except for far Northwest Iowa	3-4	0800-0900CST			0	0	4	0	Heavy Snow, Glaze, Wind
									Four to eight inches of snow fell over most of the State. Strong northerly winds whipped the snow into near blizzard conditions, closing many highways in Eastern and Southern Iowa. All highways in Appanoose County were closed due to zero visibility. Nearly all schools were closed over the Eastern half of the State on the 4th as were many businesses and factories. A mixture of snow, sleet and freezing rain fell on top of a heavy layer of ice over a wide area of Southeast Iowa and caused numerous "fender-bender" accidents.
14 KANSAS - NONE REPORTED									
IOWA									
All of Iowa	9 to 11	Evening to Morning			3	0	7	0	Ground Blizzard Bitter Cold
									Temperatures as low as 31 degrees below zero coupled with winds of 40 to 50 MPH produced wind chill factors of 60 to 90 degrees below zero. Visibility was reduced to zero by blowing and drifting snow. Drifts were as high as 15 feet in Allamakee County in extreme Northeast Iowa. All roads across Northern Iowa were closed as were many across Southern Iowa. Countless automobiles were in ditches. Motorists by the hundreds were stranded at Truck Stops, restaurants, farmhouses and in buildings provided by numerous towns and villages. Highway Patrol troopers and Sheriffs' Deputies transported stranded drivers to places of shelter. A rural Kellogg farmer died of exposure after he walked 1 1/2 miles through the sub-zero weather to the home of his parents. He collapsed upon reaching the home. The parents were unable to take him to the hospital because roads in the area had drifted shut. An Akron man was found dead, the victim of exposure, in his stalled car on Iowa Highway 3 near the Plymouth County town. His car was mired in deep drifts on the Highway. Another man was found dead from exposure in his frozen cabin near Preston in Jackson County. Almost all schools across the State cancelled classes on Monday, the 11th, due to continued bitter cold temperatures and hazardous driving conditions. A number of hogs perished from suffocation when they crowded together to seek warmth.
All of Iowa	15-16	Morning to Morning			3	0	6	0	Ground Blizzard, Freezing Rain, Bitter Cold
									A second consecutive weekend winter storm struck Northwest Iowa on an early Friday morning and spread southeast across the State during the day. The Eastern half of the State received freezing-rain preceding the arrival of snow, strong winds and bitterly cold temperatures. People, with fresh memories of the ground blizzard of the past weekend, heeded advice to take precautionary measures and not travel unless absolutely necessary. This resulted in very few stranded travelers and vehicle-free roads which aided road maintenance crews. Food stores were swamped with people stocking up on food to "ride-out" the storm. Only 1 to 2 inches of new snow fell but winds of 50-60 MPH picked up this new snow plus snow already on the ground and reduced visibility to near zero, mainly in rural areas, and produced 10 foot drifts. Wind chill figures were 50 to 80 degrees below zero. Over two dozen farm homes were isolated in Southwest Iowa. Several semis skidded off I-80 west of Des Moines. I-35 was closed to northbound traffic from Ames to the Minnesota border. The body of a 34-year old man was found in a cornfield 6 miles west of Kensett (Worth County). The man, a victim of exposure, died while walking from I-35, a mile to the east, after his car became stuck in snow. A second exposure victim was a man in Dubuque whose frozen body was found in a downtown alley in 23 degrees below zero cold. An 84-year old woman also died of exposure after she wandered from a Sioux Rapids nursing home, clad only in a dress, sweater, and shoes. The wind chill was 64 degrees below zero. There was a substantial loss in livestock, mainly hogs that were out-of-doors.
All of Iowa	21-24	Evening to Morning			0	0	6	0	Blizzard, Heavy Snow, Glaze
									A winter storm struck Iowa for the third weekend in a row. Rain and freezing rain began over Southwest Iowa the evening of the 21st and spread northeast. This was the beginning of a prolonged period of adverse and diverse weather for Iowa. Heavy snow fell over the North where over a foot of new snow was common. Fourteen inches fell at Mason City and Sioux City received 18 inches. Strong winds blew the snow into drifts of 15 to 20 feet and reduced visibility to zero. Southern Iowa was covered with a thick layer of ice. Many schools throughout the State either didn't open the morning of the 22nd or closed early because of the treacherous driving conditions. Officials closed all roads in the extreme Northwest Counties as driving was impossible on the 22nd. Residents were advised to stay at home. Numerous highways were closed in Northeast Iowa when wind gusting to more than 50 miles per hour caused severe drifting. A number of vehicles were abandoned when motorists attempted to drive through drifted over roads and became stuck. The weight of the snow and ice caused a roof to collapse on a wooden quonset-type roller rink at Hedrick (Keokuk County). Forty persons, skating at the time, escaped injury by evacuating the building after hearing loud noises and seeing six inch nails dropping to the floor. Roofs of poultry houses and cattle sheds collapsed under the weight of heavy snow in Northern Iowa killing numerous chickens and cattle.

STORM DATA AND UNUSUAL WEATHER PHENOMENA

JANUARY 1962

PLACE	DATE	TIME - LOCAL STANDARD	LENGTH OF PATH (MILES)	WIDTH OF PATH (YARDS)	NO. OF PERSONS		ESTIMATED DAMAGE		CHARACTER OF STORM
					KILLED	INJURED	PROPERTY	CROPS	

PLACE	DATE	TIME - LOCAL STANDARD	LENGTH OF PATH (MILES)	WIDTH OF PATH (YARDS)	NO. OF PERSONS		ESTIMATED DAMAGE		CHARACTER OF STORM
					KILLED	INJURED	PROPERTY	CROPS	

15 KENTUCKY

South Central and Southeast Kentucky	3-4				0	0	3	2	Flash Flooding
Moderate flooding occurred as 1 to 2 inches of rain fell over South Central and Southeast Kentucky. Several mud slides... power outages and a washed out bridge were due to high water.									
Eastern Kentucky	4				0	0	3	2	High Winds
Scattered reports of damage due to high winds were received. In Lackey Kentucky (Floyd County) gusts striped away siding, broke windows and tore away a top section of a store front. At Beaver Lake Resort (near Monticello) a boat dock broke loose causing extensive damage to the dock and other boats.									
Statewide	10-11				4	20	UNK	UNK	Cold Wave
Winds gusting to 40MPH with temperatures from 10 to 15 degrees below brought wind chills into the 50 to 70 below freezing range. Several people were killed due to cold related accidents.									
Statewide	16-17				0	10	UNK	UNK	Cold Wave
Temperatures again fell to record lows with the mercury readings falling between 5 and 15 below zero.									
Northern Kentucky	22				0	2	4	4	Flooding
3 to 4 inches of rain fell over 24 hours with a general flooding of low lands and streams. Several people had to be rescued from rapidly rising waters in Calloway County.									

16 LOUISIANA

Gonzales, Ascension Parish	01 2300CST				0	0	0	0	Hail
Golfball-sized hail fell - no damage reported.									
NORTHEAST LOUISIANA	03 1300CST to 1830CST				0	1	3	0	Hail, Wind Heavy Rain
A line of severe thunderstorms accompanied by high wind and widespread hail moved east through northern Louisiana during the afternoon with minor damage to numerous trees, power lines, utility poles, and signs widespread throughout the area.									
Stonewall, Desoto Parish	03 1305CST								1" hail.
Minden, Webster Parish	03 1400CST								Street flooding/marble-golfball sized hail
Bienville Parish	03 1500CST								Golfball-sized hail.
Ruston, Lincoln Parish	03 1545CST								Marble-sized hail fell for 15 minutes.
Jackson Parish	03 1620CST								Jonesboro, Choudrant, Wyatt, and Dobson experienced golfball-sized hail.
Monroe, Ouachita Parish	03 1630CST								A man was injured when high winds blew a limb from a rotten tree through his windshield.
Winnfield/Olla, Winn Parish	03 1635CST								Marble to golfball-sized hail.
Boyce, Catahoula Parish	03 1830CST								Marble-sized hail covered the ground.
Simms, Grant Parish and Rapides Parish	03 1830CST								Marble-to-golfball-sized hail.
STATE-WIDE	10-13				6	?	6°	C	WINTER STORM
Sunday, January 10th, a deep arctic air mass moved south to the Gulf Coast dropping temperatures to the coldest readings of the past 20 years. Almost to the day 20 years ago, Jan. 9, 1962, a comparable weather scenario took place.									
This year, temperature readings were at or below freezing for 36-48 hours in the south and up to 127 hours* in the north as a severe freeze blanketed the state.									
*Monroe	Single digit readings were recorded over the north half of the state and 10 to 15 degree readings south. The lowest temperature of the period was 4 degrees recorded at Ruston, Calhoun, and Monroe. The warmest low temperature in the state was 22 degrees recorded at Boothville.								
To complicate the weather picture, multiple low pressure systems developed in the northwest Gulf of Mexico Tuesday and Wednesday, January 12th & 13th, moving east across the coastal plains creating a serious winter storm.									

LOUISIANA

Freezing rain was wide-spread over the state Tuesday and turned to snow in the north half Tuesday night. The northern tier of parishes received 4 to 6 inches of snow with the most (11 inches) falling at Hanna, about 40 miles southeast of Shreveport. Lesser amounts of snow were reported over central Louisiana with 1 to 2 inches reported just north of a line from Lake Charles to Bogalusa.									
Sleet, snow, and freezing rain all but halted commercial transportation, and private auto traffic was virtually non-existent for about 24 hours throughout the state. Hundreds of auto accidents occurred on ice-covered roads.									
Air conditioning water towers froze, creating fire hazards. The heavy drain on water systems caused problems for hospitals and public water systems as residential water pipes froze and broke in thousands of homes. Electric power companies estimate that 90% of their customers suffered loss of power at one time or another during the four-day period. Natural gas supplies were also reduced in numerous areas.									
Low water pressure and broken pipes closed schools, factories and businesses for up to three days throughout the state. An estimated 50-75% reduction in commercial output was realized during the 4-day storm.									
Crop damage was minimal since the storm occurred in the non-growing season for agricultural industry. However, sugar cane production was set back as young shoots were killed. Damage to parent root stock will not be realized until late April. Ornamentals suffered extensive damage but an accurate monetary value cannot be determined until late April or early May when spring growth appears. Most estimates of nursery stock losses range from 15 to 30% in the north to 45 to 80% in the southeast where less-freeze-resistant varieties of ornamentals are stocked. Citrus crop loss was moderate to severe although most of the crop had been harvested prior to the storm. Again, true damage estimates will not be available until later in the spring.									
Iberia Parish	11 unknown								Winter Storm
Three homes and a washateria suffered moderate damage when fires were started by space heaters or fireplaces that were used to alleviate bitter cold.									
Shreveport, Caddo Parish	12 unknown								
An electric power service supervisor was electrocuted by a power line severed by a fallen tree limb.									
Zachary, East Baton Rouge Parish	12 Unknown								
A 102 year-old woman died of Hypothermia in her unheated home.									
Collinston, Morehouse Parish	12 unknown								
A mother and daughter died in a house fire caused by a space heater.									
Ferriday, Concordia Parish	13 unknown								
An elderly man died of hypothermia in unheated home.									
Alexandria, Rapides Parish	13 unknown						2		
Metal covering over a church walkway collapsed under the weight of ice and snow.									
Tensas Parish	13 unknown						3		
A warehouse roof over a loading platform collapsed under the weight of snow.									
Winn Parish	13 unknown						3		
Two nursery greenhouses collapsed, a cotton trailer shed fell in and store metal awnings collapsed under weight of ice and snow.									
Ouachita Parish	13 unknown						4		
Several fires caused by space heaters and by persons trying to thaw pipes with blow torches destroyed rural homes. Fire fighting was complicated by frozen water mains and impassable roads.									
Dequincey, Calcasieu Parish	13 unknown								
A 96 year-old woman died when a space heater ignited her clothing.									
Denam Springs, Livingston Par	13 unknown						5		
Six homes were destroyed or damaged by fires started by fireplaces.									
Vinton, Calcasieu Parish	22 1200CST				0	0	2	0	TSTM WINDS
A large tree was blow over and knocked down power lines									

STORM DATA AND UNUSUAL WEATHER PHENOMENA

JANUARY 1982

PLACE	DATE	TIME - LOCAL STANDARD	LENGTH OF PATH (MILES)	WIDTH OF PATH (YARDS)	NO. OF PERSONS		ESTIMATED DAMAGE		CHARACTER OF STORM
					KILLED	INJURED	PROPERTY	CROPS	

LOUISIANA

Jennings, Jefferson Davis Parish	30	1800CST	0	0	4	0	0	TSTM WINDS	Two buildings were destroyed at the fair grounds, roofs of two other buildings were blown off, several sheds were blown over, tree limbs broken and power lines downed as a line of severe thunderstorms moved east through southern Louisiana.	
Cottonport and Marksville in Avoyelles Parish	30	2000CST	0	0	3	0	0	TSTMS	Trees were uprooted, signs and awnings were damaged, and power lines were downed by thunderstorm winds.	
Lafayette Parish	30	2130CST	0	0	4	0	0	Severe Thunderstorm	The line of thunderstorms continued eastward blowing over mobile homes and small sheds in Scott, Carencro and Youngsville.	
Assumption Par.	30	2300CST	short	narrow	0	1	4	0	Tornado (F2)	As the line of severe thunderstorms moved east, a tornado touched down in Paincourtville, 35 miles south of Baton Rouge and moved east to Plattenville. Damage was caused to the roof and windows of a high school gymnasium and the roof blown off of a bank in Paincourtville; and a boat and trailer were blown about 100 yards from where they were parked and slammed into a service station in Plattenville. Trees were uprooted and power lines downed. A group of three women were blown down by thunderstorm winds after the tornado passed, one was injured in falling.
New Orleans, Orleans Parish	31	0200CST	0	0	3	0	0	Severe Thunderstorm	The roof of a carport was blown down. Thunderstorm damaging a car during a thunderstorm associated with the squall line mentioned above. Marble-sized hail fell with that storm.	

17 MAINE

Southeastern	01-02	Aftn	0	0	5	0	0	Wet, Heavy Snow	Wet, heavy snow, beginning as rain, plagued Eastern Maine from the coast to about 30 miles inland. Many power and telephone lines were snapped or shorted out by up to 8 inches of ice and snow accretion on them. An estimated 20,000 customers were without power for 36 hours in Hancock and Washington Counties; and about 10,000 for 24 hours in Knox and Waldo Counties. Franklin was without power for 46 hours and Deer Isle was powerless and phoneless for much of five days. Accumulation of snow over the area ranged from 8 to 18 inches. However, up to 24 inches fell over extreme eastern Washington County. Heavy snow loads caused roofs to collapse on a storage shed and barn in Dresden; on a saloon in Chelsea; and on a fish and game clubhouse in Oxford.
Deer Isle, Hancock County	13-14	Evening	0	0	4	0	0	High Winds	Wind gusts to 75 mph (65 knots) were recorded on the bridge to Deer Isle which made it undulate 6 to 12 inches. The strong winds also took down snow-laden trees, limbs and power lines over southeastern Maine, causing scattered power outages to the newly restored lines.

18 MARYLAND and D. C.

North Central	3	Morning	0	6	0	0	0	Glaze	Freezing rain and sleet produced very hazardous conditions on highways and sidewalks. Numerous traffic accidents occurred, and at least 6 people were treated for falls in the Baltimore area.
Central	3-4		0	0	3	0	0	Rain, Wind	Pre-cold frontal activity late on the 3rd into the morning of the 4th resulted in local flooding of roads and underpasses. A home in Severna Park was damaged when wind caused a 150-foot tree to fall on it. Heavy thunderstorms were reported in the vicinity at about that time.
Western	4-5		0	0	3	0	0	Wind	Winds gusted to around 40 mph or better, following a cold frontal passage late on the 4th into the morning of the 5th. Scattered property damage was reported and power lines were down in Cumberland and over portions of Garrett County.

PLACE	DATE	TIME - LOCAL STANDARD	LENGTH OF PATH (MILES)	WIDTH OF PATH (YARDS)	NO. OF PERSONS		ESTIMATED DAMAGE		CHARACTER OF STORM
					KILLED	INJURED	PROPERTY	CROPS	

MARYLAND and D. C.

Statewide and District of Columbia	9-11		4	17	4	0	0	Cold	Arctic air surged into the mid-Atlantic area on the 9th and resulted in record low readings for both minimum temperatures and for daytime high temperatures on the 10th and the 11th, in many locations. Oakland, in Garrett County, registered 20 below zero the morning of the 11th, and the wind chill factor over the west portion of the state was in the minus 50s. Service calls for frozen water pipes and stalled vehicles were in a volume greater than many could recall. Of the cold-related injuries, five members of a rescue team were treated for frostbite at a fire in Boonesboro, Washington County. On the Chesapeake Bay a man was lost and presumed drowned. The boat he had taken to rescue a stranded fellow-worker was swamped by high waves near the Hart-Miller Islands. The co-worker was rescued by helicopter. In Millington, Kent County a man was found in his unheated home...an apparent victim of exposure. In Washington, D.C. two men were also found, apparent victims of hypothermia, as well. Elsewhere, a Towson store had \$5,000 damage when burst pipes showered water over goods.
Central and Northern & District of Columbia	13							Snow	The heaviest snowfall since 1979 for much of the area as 4 to 6 inches fell most of the day, ending before midnight. At the height of the storm a commercial airliner crashed into the Potomac River in Washington, D.C. Monumental traffic tie-ups developed as the heaviest snowfall coincided with the height of the rush-hour.
Central and Southern	14		0	0	0	0	0	Snow	The second storm in less than 24 hours took a path more to the south of the previous low center. Snow began during the afternoon and continued into the evening, ending about midnight along the extreme southeast portion of Maryland. Snow depths ranged from 4 to 6 inches, generally, with Salisbury reporting 8 inches of new snow. Amounts of from 1 to 3 inches were reported in the northern sections.
Statewide and District of Columbia	16-18		0	12	0	0	0	Cold	Conditions were nearly a repeat of those exactly one week previous, as a new arctic surge again brought sub-zero readings to many sections. The minus two degrees in Baltimore City was a new record for the 17th...and was the first below zero temperature in 48 years in the downtown Baltimore area. An unofficial low of 34 below zero was reported near Eagle Rock in south-central Garrett County. For the City of Washington, D.C. it was the coldest in 50 years, with the -5 degrees at Washington National Airport the first below zero temperature ever recorded since the airport opened in 1942. The extremely cold conditions seriously hampered salvage operations of the air crash of the 13th.
Statewide	21		0	0	0	0	0	Snow	A new snowstorm developed very early in the day and continued to the afternoon. Amounts of 4 to 7 inches were widespread...except for the lower Eastern Shore, where a 2 to 3-inch snowfall changed to rain during the late morning hours.
Western	22-23		0	0	0	0	0	Snow	Up to 4 inches of new snow fell over portions of the state from Frederick County westward through Garrett County. Snow began late in the day on the 22nd, and continued until early morning of the 23rd.
Central, Northern & District of Columbia	22-23		0	0	0	0	0	Snow, Freezing rain, Glaze	Snow began late on the evening of the 22nd and changed over to sleet and freezing rain during the morning of the 23rd. Temperatures remained well below freezing and travel became extremely hazardous. One-quarter inch to one-half an inch of ice coated roads and existing snow cover.
Central & Northeast	31		0	0	0	0	0	Dense fog	Warm, moist air moving over snow-covered areas brought very thick fog during the morning and afternoon hours. Visibilities dropped to only a few feet in many sections, resulting in a rash of traffic accidents.

19 MASSACHUSETTS — NONE REPORTED

STORM DATA AND UNUSUAL WEATHER PHENOMENA

JANUARY 1982

PLACE	DATE	TIME - LOCAL STANDARD	LENGTH OF PATH (MILES)	WIDTH OF PATH (YARDS)	NO. OF PERSONS				ESTIMATED DAMAGE	CHARACTER OF STORM
					KILLED	INJURED	PROPERTY	CROPS		
20 MICHIGAN										
Entire State	04	All day			2	6				Wind, Snow
Driver injured when wind blew truck out of control near Ionia. Man cut by flying glass when wind broke window at Owosso. Many power lines, sign boards, trees destroyed, buildings damaged throughout area south of Saginaw and Grand Rapids. Intense low pressure center crossed state from Whitehall to Alpena. Nine to 19 inches of snow with heavy drifting north of storm track and south of Iron River-Big Bay. South of track thawing temperature and rain softened snow pack which then froze to solid ice sheet with rapid temperature drop in afternoon and evening, and was covered by 1 to 4 inches of drifting snow. Hundreds of vehicle accidents caused dozens of injuries.										
Entire State	10	All day			1	200	6			Wind, Snow, Cold.
Man died of exposure in Warren. Many persons treated for hypothermia and frostbite throughout state. Two deaths, dozens of injuries, in storm related auto accidents. Three deaths in storm related heart attacks. Four skiers injured in avalanche at Sleeping Bear Dune. All roads closed in northern Upper Peninsula and western Lower Peninsula, due to 6" to 18" of snow and heavy drifting. Lesser amounts of new snow and much drifting in other areas. Winds about 35 mph with gusts 50-75 mph. Temperature mostly below zero, wind chill 50 to 80 below zero. Emergency shelter needed by about 1500 stranded travelers. Some wind damage to structures. Many frozen water pipes. Many fires caused by overworked heating systems. Record amount of fuel used for space heating.										
Detroit, Wayne County	12	Overnight				1				Cold
Woman died of exposure after apparently locking herself out of her house.										
Entire State	16-17	All day			1	30				Wind, Snow, Cold
Man died of exposure in Livonia. Storm very similar to, but less intense than that of a week earlier. Several inches of snow on south and east shores of Great Lakes, 1 to 2 inches elsewhere, on the 16th followed by severe blowing and drifting through the 17th. Most north-south roads closed. About 100 stranded travelers in emergency shelters. Many persons treated for frostbite. Two deaths in storm related heart attacks; one death, many injuries in auto accidents. Several fires caused by overworked furnaces.										
Entire State	23-24									Freezing Rain, Wind Snow, Cold
Freezing rain with up to one inch ice coating on southern part of state, several inches of snow in north on the 23rd, followed by wind, rapidly falling temperature and snow showers, mostly on the east and south shores of the Great Lakes, into the early part of the 24th. Twenty persons injured in automobile accidents, 300 by slipping on ice, 6 persons overcome by carbon monoxide. Six hundred travelers cared for in emergency shelters. Many roads, schools, and businesses closed. Mail delivery curtailed.										
Lower Peninsula	31	All day								Snow, Cold
Heaviest snow 12 to 14 inches along Coldwater-Port Huron line tapering to 8 inches at southeast corner of state and 3 to 7 inches in extreme north. Fifteen persons, all in the Detroit Metropolitan Area, suffered fatal heart attacks shoveling snow. Many roads blocked, schools and businesses closed. About 40 persons injured in automobile accidents. About 150 persons injured in falls on ice. Twelve hundred automobiles abandoned on highways. Three hundred stranded motorists in emergency shelters. Thunder and lightning reported several places, one barn set afire.										
21 MINNESOTA										
Mhalan (Fillmore County)	5				1	0	0	0	0	Extreme Cold
Elderly woman died of exposure. Found 45 yards from her farm house early in the morning.										
Grand Rapids (Itasca County)	6				1	0	0	0	0	Extreme Cold
Elderly man died of exposure while attempting to walk home. Found a half block from his residence.										
MINNESOTA										
Entire State	9,10				2	0	3	0	0	Extreme Cold
Strong winds hit Minnesota Saturday morning January 9th and continued into Sunday causing near blizzard conditions and wind chill temperatures in excess of 100° below zero. By Saturday afternoon many roads were impassable including portions of I-35 and I-90. Two deaths occurred Saturday night, January 9th. One death was in Norman county and the other was in Mower county. Both involved stranded motorists. Winds from 24 to 45 mph created wind chill temperatures from 60° below to 80° below. These hazardous conditions spread from northwest Minnesota Saturday morning into southwest Minnesota late Saturday afternoon, then into the southeast and northeast Saturday evening. Numerous cases of frostbite were reported. On Sunday evening, winds estimated at 80 miles per hour blew part of the roof off the Silver Bay Minnesota Credit Union. A traffic light standard on Highway 61 at Silver Bay was bent and power lines were broken by falling trees and branches at Little Marais, Finland, and at Isabella. Two traffic deaths occurred Saturday and Sunday that were indirectly related to the weather.										
Entire State	15,16				1	0	0	0	0	Extreme Cold
Severe cold and strong winds swept across Minnesota creating near blizzard conditions and wind chill temperatures in excess of 100° below zero for the second weekend in a row. One death was attributed to the severe cold. A man who died of exposure was found Saturday morning outside a building in Worthington without warm clothing. Many highways across the state were drifted closed. The State Highway Patrol reported few serious injuries.										
Southern Minnesota	20,21				0	0	0	0	0	Heavy Snow
Heavy snow began late Wednesday morning in southeast Minnesota north of Rochester. In the Minneapolis/St. Paul metropolitan area 17.4 inches fell which resulted in a record for a single snow storm. A 14 inch band of snow fell from Glencoe in south central Minnesota into western Wisconsin north of Chippewa Falls. Four or more inches of snow fell over most of southern Minnesota and through extreme northeast Minnesota. A traffic accident that claimed one life was indirectly related to the heavy snow. Three men fell victim to heart attacks while shoveling snow.										
Entire state	22-24				2	0	4	0	0	Blizzard
Freezing precipitation and thunderstorms began in southern and eastern Minnesota Friday morning, January 22. Heavy snow spread over the state Friday and by Saturday morning blizzard conditions developed. The heaviest snowfall areas were in the Minneapolis/St. Paul metropolitan area and in the northwest along the North Dakota border where amounts were in excess of 16 inches. Minneapolis received 18.5 inches which broke a snowfall record for a single storm set two days earlier. On Friday night, January 22, a man died from exposure one mile from his house in Anoka county. A second death occurred when a couple became stranded 2.7 miles from their home in Hubbard county early Saturday morning. The wife died while trying to walk through 2-3 ft. drifts and wind chills of 35° below zero. The husband suffered frostbite. Snow shoveling and snow blowing activities claimed 8 heart attack victims statewide. Many roads became impassable due to drifting snow. Drifts were from 8 to 10 feet in some areas and Interstate Highways 35 and 90 were closed Friday night. Many motorists became stranded. Five major accidents occurred in the Twin Cities metropolitan area involving jack-knived semi-trailer trucks. Several farm buildings with large roof spans collapsed from the snow with losses of livestock and poultry.										
22 MISSISSIPPI										
45 Newton (Newton Co.)	3	1455CST	11	300	1	17	6	5	5	Tornado (F3)
A tornado touched down 4 miles south of the town of Newton and moved to the northeast across highway 15, highway 80 and interstate 20 before lifting 4 miles north northwest of Hickory. One man was killed and 17 others were injured. The man who was killed was found near his destroyed home. It is not clear if he was in or out of his home when the tornado struck. A total of 27 homes were destroyed or damaged. Three mobile homes, 27 service buildings and 40 units of farm equipment were destroyed. Property damage was estimated near 2 million. Ten dairy cows and 2000 acres of timber were 60% destroyed with a loss estimate of 260,000 dollars.										

STORM DATA AND UNUSUAL WEATHER PHENOMENA

JANUARY 1982

PLACE	DATE	TIME - LOCAL STANDARD	LENGTH OF PATH (MILES)	WIDTH OF PATH (YARDS)	NO. OF PERSONS		ESTIMATED ¹ DAMAGE		CHARACTER OF STORM
					KILLED	INJURED	PROPERTY	CROPS	
MISSISSIPPI									
most of the state	11-14				1	0	?	?	Winter Storm
	<p>An arctic air mass moved over the state dropping minimum temperatures below 10 degrees over most of the state on the 11th. This set the stage for the worst winter storm in Mississippi in the past 20 years. On the 12th and 13th a succession of freezing rain and snow moved over the state from the northwest. By the 14th most of the state had a glaze of ice covered with snow. From 4 to 6 inches of snow fell in a 50 mile wide area from south of Vicksburg through Jackson to north of Meridian with ice storm conditions to the south. An elderly woman froze to death in Columbus. Frozen and broken water pipes caused the McComb water system to fail. In Jackson the mayor called for water rationing due to low water pressure. Numerous light structures in the southern and central parts of the states collapsed from heavy ice and snow. Downed power lines left 20,000 homes with out power. Ice and snow covered roads caused hundreds of motor vehicle accidents. Close to 300 vehicles were stranded on</p>								
6N Meridian (Lauderdale Co.)	23	0257 CST	1/4	100	0	0	5	0	Tornado (F1)
	<p>A small tornado touched down 6 miles north of Meridian along highway 19 and moved east 1/4 of a mile before lifting. At 0258 CST a funnel cloud was reported by the state police in the area. A large tree was uprooted. It fell and demolished the back of a house. Two walls of a small cement block store were blown down. Some cement blocks were found 30 yards away. One mobil home was blown over and another was removed from its foundation. Numerous trees were snapped or blown down. Occupants of the mobil home and the house reported hearing a terrible roar like a train. Estimated damage was 60,000 dollars.</p>								
23 MISSOURI									
South Central through East	30-31	PM AM			?	?	6	?	WINTER STORM and FLASH FLOOD
	<p>One of the worst snowstorms of the century moved from the Northern Ozarks through Eastern Missouri. The storm dumped from 12 to 20 inches with a few reports of up to 24 inches. Some of the large variations were due to heavy thunderstorm activity accompanying the snow. Several deaths were reported due to heart attacks from shoveling snow after this storm or during the next several days when more snow fell. The Missouri National Guard was called out and many private individuals were paid to help clear streets and roads, especially in the St. Louis area. This storm followed heavy rains which had already dumped up to 6 inches of water in Southeast and South-Central portions of the state. Two inch rains had been common in East-Central portions. The Black River flooded factories in Poplar Bluff. In Rolla, the streets were seriously flooded on January 30 while the next day it was buried under a 12 inch snowfall. The damage for the snowstorm has been estimated at 4 million dollars.</p>								
24 MONTANA									
Blaine County	5	Early AM							Bitter Cold
	<p>Man froze to death after he tried walking to town when his pickup stalled.</p>								
Missoula, Powell, Granite, Lewis & Clark Counties	15	0600-1800MST							Blizzard
	<p>Arctic air crossed over the Continental Divide causing blizzard conditions over a wide area. 2 people were killed near Garrison on 1-90.</p>								
Flathead Lake, Missoula Counties	23	Most of the day							Heavy Snow
	<p>Heavy snow of up to 2 feet fell over these counties and northern portions of Powell county and western parts Lewis & Clark county.</p>								
25 NEBRASKA									
Southeast Nebraska	03	Evening			0	0	0	0	Heavy Snow
	<p>Heavy snow fell in southeast Nebraska with 8 inches reported at Table Rock and 7 inches at Humboldt.</p>								
Central and Eastern Nebraska	09-10	Night to Morning			1	0	5	0	Bitter Cold
	<p>Temperatures fell to 20 to 25 below over central and eastern Nebraska resulting in frozen pipes and hard starting vehicles. Gusty winds pushed wind chills from 60 to 90 below. An elderly woman died of exposure at Hartington when she wandered from a nursing home.</p>								
Eastern Nebraska	15	Morning to Evening			0	0	0	0	High Winds
	<p>Strong north winds caused near blizzard conditions at times in blowing snow. 35 to 50 m.p.h. winds were common, but a peak gust of 64 m.p.h. was measured at Norfolk at 10 AM CST. No damage reported.</p>								
Panhandle of Nebraska	17	1330CST			0	0	3	0	Damaging Winds
	<p>West winds gusted to 70 m.p.h. in the Scottsbluff area with damage reported to a number of roofs, signs, and carpents.</p>								
Central and Eastern Nebraska	21	Late Evening to Midday			0	0	5	0	Ice Storm
	<p>Freezing rain associated with thunderstorms coated roads, walks, and power lines...especially in east central and southeast Nebraska around Omaha and Lincoln south to the Kansas line. Late in the day, power failures resulted as gusty winds blew down and shorted ice covered utility lines.</p>								
Pierce County	22	0100CST			0	0	4	0	Lightning
	<p>Lightning strike heavily damaged electrical system and appliances at a farm home near Plainview. Fifteen hogs also killed.</p>								
Merrick County	22	0200CST			0	0	4	0	Lightning
	<p>Lightning set fire to a home at Silver Creek causing heavy damage.</p>								
Central, North Central and North-east Nebraska	22	All Day			1	5	3	0	Blizzard and Heavy Snow
	<p>Heavy snow averaging 7 to 15 inches fell in a band about 70 miles either side of a line from just south of Mullen to South Sioux City. The snow began in the morning, and by afternoon and evening north winds gusting 45 to 60 m.p.h. caused blizzard conditions in blowing snow. The winds created 5 to 10 foot drifts and blew down utility lines. Travel in the snow area became impossible. Lighter snowfall occurred in south central and southeast Nebraska, but blowing snow caused difficult travel. At Ruskin, an elderly man became disorientated and died of exposure in the storm, as he tried to leave his car, which was stuck in the snow. Three persons suffered frost bite around the O'Neill area and 2 persons in Cherry County did also when they had to spend considerable time in their snowbound vehicles. Some larger snowfalls included 16 inches at Ponca; 15 inches at O'Neill, Emerson and Randolph; 14 inches at Wayne and Hartington; 13 inches at Norfolk; and 12 inches at Howells, Wolbach and Greeley.</p>								
East Central Nebraska	25	0100CST			0	0	0	0	High Winds
	<p>Wind gusts to 60 m.p.h. was reported at Fremont. No reportable damage.</p>								
26 NEVADA									
WESTERN NEVADA AND EASTERN SIERRA NEVADA MOUNTAINS	1-2				0	0	5	0	HEAVY SNOW
	<p>Heavy snow closed roads and caused numerous minor accidents. No major damage was reported.</p>								
27 NEW HAMPSHIRE									
Southern	01-02	Aftn			0	0	4	0	Snow, Rain and Freezing Rain
	<p>Flooding. Power outages added to the problems. Roads were glazed. A snow-laden barn roof collapsed, damaging antiques and art objects.</p>								

STORM DATA AND UNUSUAL WEATHER PHENOMENA

JANUARY 1982

PLACE	DATE	TIME - LOCAL STANDARD	LENGTH OF PATH (MILES)	WIDTH OF PATH (YARDS)	NO. OF PERSONS		ESTIMATED ¹ DAMAGE		CHARACTER OF STORM	
					KILLED	INJURED	PROPERTY	CROPS		
28 NEW JERSEY	17 & 18				?	?	?	?	Cold Wave	
	A huge high pressure ridge funneled down cold air from Alaska and Siberia disturbing arctic chills, and leaving record chilling temperatures and extremely icy road conditions. Some called the surging arctic air mass The Siberian Express. The wind chill factor readings ranged from 40 to 50 degrees below zero.									
29 NEW MEXICO	NONE REPORTED									
30 NEW YORK, Coastal	17-18				?	?	?	?	Cold Wave	
Extreme Southeast, Nassau, Suffolk Co., Metropolitan Area, Westchester Co.	A low pressure system moving up the coast caused the worst cold wave of the season. The extreme combination of wind and cold air which closely resembled that of 1977 made the cold wave historic. The storm of 1977 was the coldest in a decade. The coldest temperature of the season struck the Westchester Putnam Area when the mercury dipped to 8 degrees below zero at the Westchester County Airport on the 18th.									
30 NEW YORK, Central	10-11	0500-2300EST			1	0	5	0	Cold & Snow squall	
AREA-WIDE	An area wide cold spell dropped temperatures from near zero to 25 below in many locations. Old Forge in the Adirondacks, dropped to 36 below. Daytime readings on the 10th never got above 9 degree and on the 11th and 12th 14 degrees was the highest temperature in the area. Winds of 20 to 30 MPH with gusts at times over 50MPH, created wind chills of 50 to 60 below zero. Many locations reported frozen water pipes, some of which caused extensive damage when bursting pipes flooded buildings. Automobiles experienced difficulty in starting and many schools were closed. Several reports of frost bite were noted especially with fire fighters battling area fires. Freezeups also caused problems for firefighters. Frozen railroad switches and train doors also caused delays for travelers. On the 10th and 11th, snow squalls to the lee of Lake Ontario closed some roadways and dropped visibilities to near zero. Locally some areas reported receiving several feet of snow in the squall areas along with blowing and drifting, caused by the strong winds. A 64 year old man in the Binghamton area of Broome County, died from exposure to the cold. He apparently fell asleep in a vacant building where he was seeking shelter.									
30 NEW YORK, Western	4-5						6		Wind	
Western 7 counties, Finger Lakes and Central Southern Tier	Strong damaging winds with gusts up to 71 mph felled trees and power lines. Businesses and schools were forced to close. Barns, rooftops and windows were blown away.									
	In Lake Erie, strong winds generated up to 12 foot waves which crashed against shoreline properties and flooded them. The Buffalo Harbor breakwater, made of giant concrete slabs, was tossed about and did a million dollars damage. The Niagara Yacht Club reported heavy damage to its dockyard.									
Western 7 Counties, Finger Lakes and Central Southern Tier	10-11				2	10	6		Blizzard	
	A winter storm now called the Blizzard of 1982 forced western and central New York to a standstill. Airports cancelled flights. Buses could not run. Stranded passengers slept on floors at the terminals. Schools and business and roadways closed. Snowdrifts of up to 8 feet and poor visibility made driving impossible. Many cars were abandoned in mid street. Others landed in ditches. Two drivers who had their cars stalled in heavy snow froze to death in their cars. Many were admitted to area hospitals for exposure to the extreme cold. There were many cases of frozen house plumbing.									
	Heavy snow clogged chimneys and a few persons were hospitalized for smoke inhalation. The strong winds snapped power lines and rendered numerous homes without power for many hours.									
Erie, Chautauqua, Cattaraugus, Monroe Counties	16-17						5		Wind, unusual cold	
	A winterstorm with strong damaging winds felled trees and power lines. Drifting and blowing snow forced flight cancellations. The extreme cold froze residential plumbing.									
NEW YORK, Western										
Western New York, Finger Lakes and Southern Tier Counties	23-24						5		Wind and ice storm	
	An icestorm glazed area roadways and rendered driving impossible. The weight of the ice broke power lines, tree limbs and sunk boats. The accompanying winds damaged barns and homes.									
31 NORTH CAROLINA	4	0600EST			0	3	4	0	Wind Thunderstorm	
Union County Monroe	A line of thunderstorms moved east through western North Carolina during the early morning. A severe thunderstorm demolished a house trailer near Monroe with slight injuries to the occupants.									
Orange, Durham and Granville Counties	4	0700-0730EST			0	0	5	0	Wind Thunderstorm	
	The line of thunderstorms continued into central North Carolina. A severe thunderstorm in the line moved northeast at 50 mph from between Durham and Hillsboro across northern Durham County into Granville County. Winds were estimated at 70 knots with the thunderstorm. Several buildings suffered wind damage and many trees were uprooted. The hardest hit area was the city of Oxford in Granville County, where a fertilizer plant lost its roof and one wall. Damage estimated at \$90,000. \$25,000 damage to the building's contents. Also in Oxford a tobacco warehouse sustained \$25,000 damage.									
North Carolina	10-15					11	?		Winter Weather	
	A record breaking outbreak of cold weather beginning on the 10th of January was followed by heavy snows over western and central North Carolina on the 13th and 15th. On the morning of the 10th, Banner Elk in Avery County had a low temperature of 26 degrees below zero. Statewide eleven people died during the week due to exposure or hypothermia.									
32 NORTH DAKOTA	09-10					0	3	0	0	Ground Blizzard Extreme Cold
Statewide	Ground blizzard conditions with considerable blowing and drifting snow and strong northwest winds (47 mph at Wahpeton in Richland County and 44 mph at Fargo in Cass County) occurred statewide on the 9th and in the east on the 10th. Because of the ground blizzard, athletic contests, church services, and meetings were cancelled; several plane flights were delayed or cancelled; many rural roads became blocked by drifts; and some motorists were stranded.									
	The strong northwest winds combined with very cold temperatures to create wind chills of 60 to nearly 110 below. Three persons suffered moderate to severe frostbite including two young women who became stranded 15 miles north of Halliday in Dunn County.									
Statewide	14-15					0	6	4	0	Winter Storm
	A winter storm caused near blizzard conditions with very strong winds (48 mph at Bismarck in Burleigh County and 46 mph at Fargo in Cass County), windchill temperatures of 50 to nearly 70 below and several inches of snow. The storm caused the closure of numerous schools; the cancellation of social and athletic events, and several plane flights; and power outages (up to 12 hours in rural Dunn County). Many roads in rural areas became blocked by drifts and some vehicles became stuck (including a bus with High School wrestlers from New Town in Mountrail County that became stuck overnight on the 14th near Stanley in Mountrail County). Six people suffered from frostbite including a 33 year old woman who was stranded for 18 hours near her Turtle Lake (McLean County) farm and two men who were stranded for 24 hours near Minnewauken (Benson County). A 75 year old Bismarck man died from an apparent heart attack while shoveling snow.									

STORM DATA AND UNUSUAL WEATHER PHENOMENA

JANUARY 1982

PLACE	DATE	TIME - LOCAL STANDARD	LENGTH OF PATH (MILES)	WIDTH OF PATH (YARDS)	NO. OF PERSONS				ESTIMATED* DAMAGE	CHARACTER OF STORM
					KILLED	INJURED	PROPERTY	CROPS		
— NORTH DAKOTA										
Statewide	21 22 23				0	3	0	0		Winter Storm Blizzard
	<p>A severe winter storm paralyzed most of the state with heavy snow (7 inches at Bismarck in Burleigh County, 7.4 inches at Williston in Williams County, 8 inches at Dickinson in Stark County, 9 inches at Minot in Ward County, 11 inches at Jamestown in Stutsman County and Grand Forks in Grand Forks County, and 18.8 inches at Fargo in Cass County), very strong winds (59 mph at Jamestown, 52 mph at Grafton in Walsh County, and 51 mph at Fargo), and windchill temperatures of 50 to 100 below. The storm was worse in the east where blizzard conditions occurred the 22nd and 23rd.</p> <p>The storm resulted in the closure of many schools; the cancellation of almost all social and athletic events; and the cancellation of plane flights and bus service. Many roads including I-94 and I-29 became blocked by drifts up to six feet high, and numerous vehicles went off the road into ditches.</p> <p>Many accidents occurred on the snow slickened roads and some people were injured including two truckers who sideswiped each other near New Salem (Morton County). Three people were treated for frostbite including a 62 year old Concrete (Pembina County) man who became pinned under his tractor for 17 hours while plowing snow.</p>									
West and Central	24				0	0	0	0		Winter Storm
	<p>A winter storm with heavy snow (5.6 inches at Bismarck in Burleigh County) and strong winds (44 mph at Dickinson and 59 mph at Taylor both in Stark County) forced the closure of many roads (including I-94), and the cancellation of several plane flights at Bismarck. One Bismarck man suffered a hip injury when he fell on snow covered steps, and a 70 year old Bismarck man died of an apparent heart attack while shoveling snow.</p>									
Statewide	27				0	0	0	0		Ground Blizzard
	<p>Ground blizzard conditions with considerable blowing and drifting snow and strong winds (46 mph at Devils Lake in Ramsey County, 52 mph at Dickinson in Stark County, and 41 mph at Bismarck in Burleigh County) caused many roads (including I-94 from Fargo in Cass County to Jamestown in Stutsman County) to become impassable. Because of the blocked roads, over 100 motorists were stranded the night of the 27th in the Valley City (Barnes County) area. In the Minot (Ward County) area, over 80 cars ended up in the ditch and several accidents occurred due to a combination of icy roads, strong winds and blowing snow.</p>									
33 OHIO										
Ottawa, Huron, Erie and Lorain Counties	04	0700-0800EST	-	-	0	0	5	0		High Winds, Hail
	<p>A line of thunderstorms along a cold front raced through these counties with 60-80 MPH winds and 1/4 inch hail. The winds damaged several structures and downed hundreds of trees and power lines. The largest single damage spot was Port Clinton High School in Ottawa County.</p>									
Lorain, Cuyahoga, Lake, Medina, Geauga, Richland, Ashland, Knox, Wayne, Stark, Summit and Portage Counties	04	0800-0930EST	-	-	0	14	6	0		High Winds, Hail
	<p>A line of thunderstorms along a cold front crossed these counties with 60-90 MPH winds and hail up to 1/2 inch in diameter. Hundreds of buildings were damaged with trees and power lines also being downed. An apartment complex in Elyria, Lorain County, had much of the top floor removed with 2 minor injuries. A school in North Ridgewille, Lorain County, had the roof taken off with 8 children sustaining minor injuries. Several structures were damaged in the Greater Cleveland area. Some mobile homes in Richland and Ashland Counties were destroyed when they were rolled over; none were tied down. Four minor injuries occurred in the Cleveland area as a result of falling objects and people being blown down. Considerable structural damage was also done in the Akron-Canton area.</p>									
— OHIO										
Ashland, Trumbull, Mahoning and Columbiana Counties.	04	0930-1030EST	-	-	0	0	5	0		High Wind
	<p>A line of thunderstorms moved through these counties with winds to 80 MPH. Several buildings and mobile homes sustained damage and trees and utility lines were downed.</p>									
Entire State	04	0900-1900EST	-	-	0	3	6	0		High Wind
	<p>After a cold front passed through the state, high winds buffeted the entire state through the day. Wind gusts reached 50 to 60 MPH in all areas throughout the afternoon. This damaged several buildings and downed trees and utility lines. Three people were injured by falling debris. The most serious injury was sustained in Marietta, Washington County, when a tree fell on a man.</p>									
Entire State	11 12	0000-2400EST	-	-	2	10	5	0		Extreme Cold
	<p>Extreme cold, gusty winds and snow brought Ohio to a standstill. Schools and offices were closed and freezing pipes caused thousands of dollars damage in the state. At least 10 people were treated at hospitals for exposure and/or frostbite. Two elderly women were found frozed to death at their homes after heating systems failed. One death was in Dayton and the other in Akron.</p>									
Southwest quarter of State	23 24		-	-	0	0	5	0		Flooding, Heavy Rain
	<p>One to two inches of rain fell in the southwest quarter of Ohio on January 23rd. This rain brought about minor flooding on the Scioto River from Circleville south; on the Great Miami south of Hamilton; on the Little Miami River at Milford and along the Ohio Brush Creek.</p>									
Southwest quarter of State	29- 31		-	-	0	3	6	0		Heavy Rain Flooding
	<p>Rainfall of 2 to 4 inches caused flooding of many rivers and streams in the southwest quarter of Ohio. The worst flooding occurred on the Great Miami River in the southwest corner of the state. Several people were evacuated at Miamitown and many structures along the stream were affected by the water. Only minor injuries were reported. Flooding also occurred on the Little Miami River, the Mad River, the Scioto River and the Ohio Brush Creek.</p>									
Northwest and East Central	29- 31		-	-	0	0	4	0		Heavy Rain Flooding
	<p>Minor flooding also occurred in Northeast and East Central Ohio due to lesser rainfall amounts and snowmelt. The most serious flooding occurred on the Mahoning River and Killbuck Creek.</p>									
34 OKLAHOMA										
Tom, McCurtain County	2	1000CST			1	1	0	0		Lightning
	<p>Two men hunting near Tom, about 15 miles southeast of Idabel, were struck by lightning. One man, the father, was killed and his son was injured.</p>									
Binger, Caddo County	10	Morning			1	?	?	?		Freezing Temps
	<p>A man, 62, apparently fell on his porch and died of exposure. Also with temperatures near zero in Central Oklahoma and near ten below in the North, numerous water pipes and water meters froze. There was no way to evaluate the dollar damage, however reports of damage was widespread across the state.</p>									
Cement, Caddo County	20	Morning			1	?	?	?		Freezing Temps
	<p>An elderly man, 80, fell while feeding his cattle, was unable to get up and died as a result of exposure.</p>									
Anadarko, Caddo County	29	1949CST			0	0	?	?		Hail
	<p>Golf Ball sized hail, also strong winds and some street flooding.</p>									
Oklahoma City, Oklahoma County	29	2048CST			0	0	0	0		Funnel Cloud

STORM DATA AND UNUSUAL WEATHER PHENOMENA

JANUARY 1982

PLACE	DATE	TIME - LOCAL STANDARD	LENGTH OF PATH (MILES)	WIDTH OF PATH (YARDS)	NO. OF PERSONS				ESTIMATED DAMAGE		CHARACTER OF STORM
					KILLED	INJURED	PROPERTY	CROPS	PROPERTY	CROPS	

PLACE	DATE	TIME - LOCAL STANDARD	LENGTH OF PATH (MILES)	WIDTH OF PATH (YARDS)	NO. OF PERSONS				ESTIMATED DAMAGE		CHARACTER OF STORM
					KILLED	INJURED	PROPERTY	CROPS	PROPERTY	CROPS	

OKLAHOMA

Oklahoma City, Canadian County 30 0030CST 3 ? ? ? Flooding
 Three children drown in a flooding creek, in far southwestern Oklahoma City which is part of Canadian County. A pickup truck with seven persons riding in the cab was swept off the road into about nine feet of water in a creek bed. Two adults escaped out the driver's door, one adult, and one child escaped out a sliding rear window.

35 OREGON ————— NO REPORT RECEIVED

36 PENNSYLVANIA, Eastern

Eastern Penna. 03 1200 to 04 1300 EST 0 0 4 0 Heavy Rain, Glaze

Rain fell over Eastern Pennsylvania Sunday, the 3rd, into Monday. The rain was heaviest during the early morning hours Monday. When the rain began on the 3rd temperatures were at freezing or slightly below over much of the area. This resulted in icy conditions and resulted in many automobile accidents with accompanying injuries. Rainfall amounts were 1.50 to 2.20 inches over some sections, mostly the southern two-thirds. This resulted in roadway and stream flooding with drainage flooding entering a few buildings.

Eastern Penna. 04 2100 to 05 1400 EST 0 0 4 0 High Wind

High winds with gusts over 50 MPH in many locations caused minor damage across Eastern Pennsylvania. The highest winds recorded were 62 MPH at Chambersburg in Franklin County. The roof was completely torn off one home near Mercersburg, Franklin County.

Eastern Penna. 13 0300 to 2400 EST 0 0 2 0 Heavy Snow

Snowfall over Eastern Pennsylvania accumulated 3 to 6 inches. The heaviest amounts fell over the southeast portion where huge traffic tie-ups resulted.

Eastern Penna. 16 0600 to 1800 EST 0 0 1 0 Snow

Light snow resulted in 1 to 3 inches accumulating, but strong winds developed as the snow tapered off resulting in considerable drifting that closed some roads. Rapidly falling temperatures accompanied the strong winds. Temperatures fell to below zero across the state by Sunday morning, January 17. The lowest reported in Eastern Pennsylvania was 25 below zero at Pleasant Mount in Wayne County.

Eastern Penna. 22 2200 to 23 1400 EST 0 0 4 0 Heavy Snow, Ice Storm

A huge winter storm moving east across the nation brought snow in amounts of 3 to 8 inches to Eastern Pennsylvania. The snow gradually became mixed with and changed to sleet and freezing rain before ending in the early afternoon. The freezing rain caused an accumulation of ice on roadways, trees, wires and other exposed objects. The ice accumulated to a half to one-inch thickness in some locations and caused damage to utility lines and trees. The ice also resulted in many traffic accidents. Many traffic accidents also occurred from snow and freezing rain late on the 19th into the 20th and again when 1 to 3 inches of snow fell on the 21st.

36 PENNSYLVANIA, Western— NONE REPORTED

37 RHODE ISLAND ————— NONE REPORTED

38 SOUTH CAROLINA

Along Saluda, Broad Congaree, Wateree, Lynchies & PeeDee Rivers 1-14 0 0 4 3 Flooding
 Heavy rains the last of December and first week of January produced the heaviest lowland flooding along these rivers since March 1980, and in some cases earlier.

Anderson, Greenwood, York, Chester Counties 4 0300-0500EST 0 1 4 0 Thunderstorm Wind, Rain
 A strong line of thunderstorms moved into western S.C. ahead of a cold front. A localized windstorm or thunderstorm downburst at Anderson destroyed a warehouse, damaged a large department store, one or more mobile homes blew down power lines and trees. Scattered damage over several counties was reported as squall line moved east.

Statewide 11 early morning 2 4 4 4 Hard Freeze
 Record low temperatures with readings as low as -10°F at Caesars Head to around 0°F in central S.C. caused heavy damage to exposed waterlines, etc. One person froze at Columbia, another at Charleston did not survive a severe case of hypothermia. Flowers and vegetation damaged.

Statewide (except south coastal plain) 12-14 0 unk 5 4 Snow, Sleet, Freezing Rain
 Winter storm during afternoon and night of January 12 brought 3-4 inches of snow to northwest S.C. to less than 1 inch in central portion. Freezing rain and sleet followed on Jan 13 over all except the south coastal area. A second low moved from north Gulf of Mexico to off the Carolina coast on the 14th and dumped additional snow over western, central and northern South Carolina. Total accumulations from around 8 inches at Salem in the mountains to a trace or more over all but southeastern South Carolina. Ice on trees and power lines...especially in north central and northeastern counties...disrupted utility service and caused some loss to forestry interests.

39 SOUTH DAKOTA

Statewide 9-1000 CST 12 2100 CST 2 0 ? 0 Ground Blizzard Extreme Cold

Winds, 20-40 mph accompanied by 1-3 inches of snow, created ground blizzard conditions. Temperatures as low as 30 degrees below zero. Two deaths from exposure were attributed to the storm, including a sixty-nine year old Scotland (Bon Homme County) woman and a Veb-lem (Marshall County) woman. Both tried to walk for help after their vehicles stalled. Near zero visibilities and snow drifts up to five feet deep forced the closure of numerous highways. Minor power outages were reported.

Statewide 15-0500 CST 16 1400 CST 1 1 ? ? Blizzard

One to four inches of snowfall and northwest winds up to 45 mph (brief gusts 50-60 mph) created havoc with blowing and drifting snow. Wind chill indices ranged from 50-80 degrees below zero and visibilities were near zero across most of the state. One fatality was attributed to the storm with the death of a 75 year old Milbank (Grant County) man due to exposure. There were numerous weather-related traffic accidents. Major accidents included: a truck blown off Interstate 90 near Murdo (Jones County) injuring the driver; a truck blown off Highway 281, turned upside down into a ditch north of Plankinton (Aurora County) and a truck slamming into a bridge on Interstate 90 near Murdo (Jones County). One of the state's largest commercial nurseries near Watertown (Codington County) reported numerous fruit trees killed by the bitter cold.

Statewide 22-0500 CST 24 2300 CST 1 0 ? 0 Heavy Snow Blizzard

A winter storm of long duration lasting 3 days virtually paralyzed South Dakota with snowfall accumulations from 6-20 inches. The heaviest snowfall at Elk Point (Union County) was accompanied by a rare thunderstorm. Subzero temperatures statewide coupled with strong winds of 30-50 mph sent wind chill indices to 50-70 degrees below zero. One woman apparently died of exposure near her home in Aurora County. Peak wind gusts of 61 mph were recorded at Gavin's Point Dam at 8:30 pm, January 22. Snow drifted as high as fifteen feet. Blowing snow reduced visibilities to near zero most of the duration of the storm. Hundreds of motorists were stranded. Numerous weather related traffic accidents occurred due to the high winds and near zero visibilities. Some rural power outages were reported. Major highways, interstates and airports were closed. The Governor of South Dakota ordered I-90 from Chamberlain to the Minnesota State Line closed at 2 pm, January 23. Mail service was limited. Numerous businesses closed. There was no Greyhound bus service. 99% of all roads in central and eastern South Dakota were blocked. No travel was allowed as snowplows were unable to make headway until January 24. A few early lambs died in Clark County because of the winter conditions. The Game, Fish and Parks Department reported some pheasants appeared to have frozen from snow blowing up under their feathers.

STORM DATA AND UNUSUAL WEATHER PHENOMENA

JANUARY 1962

PLACE	DATE	TIME - LOCAL STANDARD	LENGTH OF PATH (MILES)	WIDTH OF PATH (YARDS)	NO. OF PERSONS		ESTIMATED DAMAGE		CHARACTER OF STORM
					KILLED	INJURED	PROPERTY	CROPS	
40 TENNESSEE									
Memphis, Shelby County	3	1708CST			0	0	?	?	High winds, hail
A thunderstorm caused winds to gust to 58 miles an hour. Hail with the thunderstorm was reported just east of the Memphis Airport ranging from pea to near one inch in size.									
Lauderdale and Tipton Counties	3	1800CST			0	0	4	0	High winds, hail
High winds estimated at 60 miles an hour caused scattered damage across the two counties. A mobile home was blown off its foundation in Arp, and several plate glass windows were broken in downtown Ripley. The most damage was in the Halls area, northeast of Ripley, where a mobile home was completely blown over and destroyed. In Tipton County, hail was reported about one inch in diameter. Two mobile homes were damaged and one tree was blown onto a pickup truck.									
Murfreesboro, Rutherford County	3	Night			0	0	5	0	Lightning
Lightning struck a mobile home and a house causing fires which destroyed both. Lightning came into the mobile home via the television line and into the house via the electric lines.									
Pulaski, Giles County	3	Unknown			0	0	?	0	High winds, minor
Thunderstorms and rain totaled 3.67 inches in flooding Pulaski causing Richland Creek to spill out of its banks at Minor Hill Road. No serious flooding or property damage was reported.									
Dyersburg, Dyer County	10				1	0	0	0	Cold
A 42-year-old man who apparently fell hitting his head died as a result of the exposure to the cold.									
Statewide	10-11								Extreme cold
Temperatures across Tennessee Monday morning were extremely cold as Arctic air became fully entrenched in the Southeast. Temperatures across the State ranged from 2 degrees at Memphis to 9 degrees below zero at Crossville. Chattanooga and Memphis were the only two reporting stations above zero.									
Memphis, Shelby County	11				1	0	0	0	Extreme cold
An 80-year-old woman apparently froze to death in her ramshackle house.									
Sweetwater, Monroe County	11				1	0	0	0	Extreme cold
An elderly Sweetwater man apparently froze to death after accidentally locking himself out of his house.									
Statewide	12								Heavy snow
A snow storm dumped up to 6 inches of snow across West and Middle Tennessee and 2 to 3 inches in East Tennessee. The snow came on the heels of some extremely cold temperatures Sunday and Monday, and caused hazardous travel conditions and school closings. A hotel in Memphis offered a "one-time snowstorm rate" for stranded travelers.									
Clarksville, Montgomery County	14				1	0	0	0	Extreme cold
A 19-year-old man apparently froze to death during the night as low temperatures got to 12 degrees. The man apparently became disoriented on his way home through the woods after a long period of snow sledding.									
West Tennessee	18	Daytime							Ice, freezing rain
After another extremely cold weekend which saw 0 degrees recorded for a low in Memphis, freezing drizzle began during rush hour causing extensive problems for drivers throughout West Tennessee. The freezing drizzle froze on contact with the cold ground turning most roads into ice rinks.									
East Tennessee	18-19								Ice, freezing rain
Freezing rain turned much of East Tennessee into a skating rink Tuesday. Traffic was brought to a complete halt. Accidents were commonplace. The middle portion of the State was spared most of the freezing precipitation.									
East of Lawrenceburg, Lawrence County	23	0200CST			1	1	?	?	Heavy rains, flash flooding
A car was washed off a low-water bridge by fast moving waters. Rains totaling around 2 inches had fallen Friday night swelling area creeks and streams. The bridge over Shoal Creek was crossed at 1 a.m., but when the car tried crossing at 2 a.m., the water had risen too high and the car was swamped. The driver was able to escape, but the passenger was drowned. The driver had to cling to some trees for 5 hours before being found and rescued.									
41 TEXAS, Northern ————— NO REPORT RECEIVED									
41 TEXAS, Southern									
south Texas	10-11				0	0	6	6	Unusual Cold
On the night of Jan. 9 through the day Jan. 10 cold arctic air surged southward through Texas on strong north winds. As high pressure settled over the area the morning of Jan. 11, cities in south Texas experienced the coldest temperatures in many years. Some selected readings that morning included: *Junction 7 degrees F *Bryan-College Station 9 (only 9th time temp. below 10F) *Austin 11 (coldest since 2/2/1951) *Houston (Airport) 12 (coldest since 1/31/1949) *San Antonio 13 (coldest since 1/12/1962) *Victoria 14 *Beaumont-Port Arthur 15 *Del Rio 15 *Corpus Christi 20 (tied daily record minimum) *record daily minimum established									
North of a Del Rio-Corpus Christi line temperatures were below 32F by 9 pm CST Jan 10 and remained below freezing until midday Jan. 12. an unusually prolonged period of subfreezing for the region.									
Power outages occurred around Austin and to the west and north of the city due to power line snaps as the unusual cold contracted and strained lines. Some areas of south central Texas were forced to close schools and businesses due to inability to adequately heat buildings. From Burnet to Georgetown to Bryan high user demand overtaxed natural gas delivery systems. In Austin an elderly woman huddled close to a space heater during the severe cold, was killed when her clothing caught fire. Throughout the area, and especially north of a Del Rio- San Antonio- Houston line, much damage was done to plumbing as pipes froze and burst. Serious water damage occurred to many buildings as pipes began to thaw and leak midday Jan. 12.									
Gale force northerly winds which ushered in the cold produced abnormally low tides on Texas bays and waterways Jan. 10. This caused some disruption of shipping, mainly on the upper coast.									
The lower Rio Grande Valley was spared a hard freeze. The coldest temperature there was McCook with 25, but the main citrus growing areas registered 28 to 30F. No serious damage to citrus was reported, but sugar cane (50 percent unharvested) was hurt by the cold. In the Winter Garden area of Crystal City-Carrizo Springs-Uvalde significant damage to spinach and cabbage occurred.									
much of south Texas	11-12	Night-next morning			0	0	6°	0	C Ice Storm
Late night on Jan. 11 an upper atmospheric trough moved eastward across northern Mexico and progressed over southern Texas on Jan. 12. Thickening clouds well in advance of the disturbance overtopped an unusually cold low level airmass already situated over south Texas. Freezing rain and sleet developed eastward into Texas along the Rio Grande at Del Rio by 5 PM CST and spread rapidly eastward to Orange by 4 AM.									
Heavy falls of sleet were reported in the Del Rio-Brackettville-Uvalde- Kerrville area. Most other areas north of a Laredo-Corpus Christi line received significant glazing from freezing rain. South of that line light freezing drizzle put a thin coat of ice on above-ground objects. For the first time in many years icing occurred at Brownsville as temperatures hovered near 30 degrees.									
Widespread travel disruptions resulted early morning of Jan. 12 as ice coated expressways, overpasses, and bridges. Major cities reporting traffic jams, impassable or closed bridges, and numerous traffic accidents included Austin, Del Rio, San Antonio, Corpus Christ, Houston, Beaumont, Port Arthur. Spotty ice on bridges in the Lower Rio Grande Valley was especially treacherous to unaccustomed drivers. A 20-car pile up injured many in Brownsville; a 6-car wreck killed a woman at Mercedes.									
Power outages occurred throughout the affected area but were most serious and prolonged in southeast Texas. East and north of a line from Bryan to Houston to Port Arthur some 3/4 to 1 inch of freezing rain fell. Ice-laden trees and branches in the heavily forested area were mainly responsible for the widespread loss of electricity as they crashed onto power lines. Some loss to fruit trees may have occurred. Most crop damages were attributable to cold earlier on Jan. 11.									
south central Texas	13				0	0	?	?	Heavy Snow
Following a brief clear period after the ice storm of early Jan. 12, a new upper air disturbance raced eastward over central Texas and produced a band of snow from Del Rio to San Antonio to Galveston and northward. Although of brief duration from mid-morning to mid-afternoon on Jan. 13 and although of 1 inch or less accumulation in most locations, the snow did fall heavily along a swath through the center of Texas. The southern edge of the heavy snow (which extended northward into north central Texas also) was from Mason to Burnet to Georgetown to Bryan. Farm Roads became impassable through portions of Mason, Llano, Burnet, Williamson, Milam, Brazos, and Robertson Counties. In Williamson Co. some 150 cars were reported stranded in the west and north parts of the county due to 6 inches of snow. Elsewhere a mixture of sleet and snow produced a slush on highways which caused many traffic accidents, especially in Houston. This storm produced the first measurable snowfall in San Antonio (1/2 inch) in 9 years and dropped trace amounts at Galveston and Corpus Christi.									

STORM DATA AND UNUSUAL WEATHER PHENOMENA

JANUARY 1962

PLACE	DATE	TIME - LOCAL STANDARD	LENGTH OF PATH (MILES)	WIDTH OF PATH (YARDS)	NO. OF PERSONS		ESTIMATED DAMAGE		CHARACTER OF STORM														
					KILLED	INJURED	PROPERTY	CROPS															
TEXAS, Southern																							
South Texas	14				0	1	?	?	Unusual Cold														
<p>A second surge of arctic air in less than 5 days gave unusually cold morning temperatures to all of south Texas Jan. 14. Although overall not so severe as the cold of Jan. 11, this hard freeze did penetrate farther south and affected agricultural areas of the Lower Rio Grande Valley. The duration of lowest temperatures, however, was not enough to cause serious citrus damage although sugar cane and winter vegetables were hurt. In Houston a man was found in poor condition suffering from hypothermia after spending the night in an automobile. Some daily record lows set for Jan. 14 included these:</p> <table style="width: 100%; border: none;"> <tr> <td>Beaumont-Port Arthur</td> <td>19 degrees F</td> </tr> <tr> <td>Corpus Christi</td> <td>19</td> </tr> <tr> <td>Houston (Airport)</td> <td>19</td> </tr> <tr> <td>Victoria</td> <td>20</td> </tr> <tr> <td>Galveston</td> <td>24</td> </tr> <tr> <td>Brownsville</td> <td>25</td> </tr> <tr> <td>McAllen</td> <td>29</td> </tr> </table>										Beaumont-Port Arthur	19 degrees F	Corpus Christi	19	Houston (Airport)	19	Victoria	20	Galveston	24	Brownsville	25	McAllen	29
Beaumont-Port Arthur	19 degrees F																						
Corpus Christi	19																						
Houston (Airport)	19																						
Victoria	20																						
Galveston	24																						
Brownsville	25																						
McAllen	29																						
41 TEXAS, Western — NONE REPORTED																							
42 UTAH — NONE REPORTED																							
43 VERMONT																							
AREAWIDE	10,11, 12	0500-2300EST			0	0	4	0	Cold														
<p>Temperatures dropped from 10 to 25 below zero during the nighttime hours and during the day never climbed above 9 degrees at reporting stations. Many Northern areas never got above 4 degree above zero. Winds of 15 to 30 MPH with higher gusts, created wind chill factors of 50 to 60 below zero.</p>																							
44 VIRGINIA																							
Williamsburg, BW	4 Afternoon				0	0	3	0	Wind														
<p>Heavy showers and gusty winds moved through the area during the afternoon in advance of a cold front. This activity apparently demolished the porch of an unoccupied summer house in the Chickahominy Haven community.</p>																							
Statewide	9-12				3	20	5	0	Cold														
<p>Strong surge of arctic air brought a deluge of calls for auto and plumbing service as water lines froze or burst and motor vehicles were unable to be started. Many low temperature records were broken, with readings in the single digits or below zero, especially on the morning of the 10th. The conservative estimate of cold-related injuries included two men of a party of 4 who were in a cabin cruiser that became mired in ice and sank in Occoquan Bay. Two other men, who jumped into the water to swim for help, disappeared and were presumed drowned in water that would have allowed only a short time for survival. In Caroline County a 47-year-old man was found in a yard near his home, apparently a victim of hypothermia. Elsewhere, extreme cold froze hydrants in Lynchburg and made firemen's efforts to control a fire impossible. The home burned to the ground.</p>																							
Most of State	12-13				1	0	0	0	Snow, Cold														
<p>Snowfall amounts of 4 to 8 inches were common over the western two-thirds of the state. Snow began late on the 12th and continued to evening of the 13th. Mixed rain and sleet fell over the southeastern portion. In Richmond, a 71-year-old man was found dead in his unheated apartment... apparently due to extreme cold.</p>																							
Most of State	14				0	0	0	0	Snow														
<p>A new snowstorm followed on the heels of the above storm, beginning during the late morning over the west, and ending by midnight in the eastern counties. Amounts of 3 to 6 inches of snow were prevalent, with 6 to 10 inches reported in the east-central sections.</p>																							
Statewide	16-18				1	14	0	0	Cold														
<p>Another outbreak of severe cold followed one week after the previous surge, with effects nearly a repeat of the last spell. Again record low temperatures were observed: The -11 degrees on the 17th at Winchester was the coldest in 51 years of record; the 5 below zero reading at Charlottesville was the coldest this century. In Richmond, where the temperature dropped to 4 above, a 70-year-old man was found in his unheated residence, apparently another hypothermia victim. (The number of persons treated for cold-related injuries is again a conservative estimate.)</p>																							
VIRGINIA																							
Central Portions	19 Morning				0	0	0	0	Glaze														
<p>Freezing rain that developed during the early hours continued through the morning. The resulting glaze paralyzed many areas from the mountains eastward to the Chesapeake Bay. Ice coatings of a half-inch were common. In Covington, where accumulation reached one inch, the storm was described as the worst in a decade.</p>																							
Northern Third	21 Morning				0	0	0	0	Snow														
<p>Snow began shortly after midnight, with heaviest fall during the early morning hours, and ended before noon. Amounts of 3 to 6 inches were common, with up to 8 inches measured in western Prince William County.</p>																							
45 WASHINGTON																							
Pierce Co.	16	1100PST	-	-	1	0	0	0	High Winds														
<p>A Tacoma man drowned when his sailboat capsized in a race north of Commencement Bay.</p>																							
Statewide	23-25		-	-	0	0	6	?	Heavy rains														
<p>Warm temperatures combined with heavy rains to cause rises in rivers. Avalanches and mudslides also caused extensive damage. All three of the major Washington mountain passes that link the eastern and western parts of the state were closed by avalanches or mud slides during this period. The economic losses because of the closures are unknown. Interstate 90 over Snoqualmie Pass suffered extensive damage when a debris dam that formed along Olallie Creek gave way, sweeping across the highway. Some of the rocks dumped onto the highway were one foot in diameter and debris was heaped twenty feet deep in places. A waterfall twelve feet wide cascaded over the edge of the undermined pavement. It will cost \$200,000 or more to repair. Numerous roads and bridges statewide were washed out or damaged during this period. Road repairs in Whatcom County alone may run as high as 1.4 million dollars. Larger rainfall amounts for the period included 8.8 inches on the Skykomish River, 5.9 inches at Snoqualmie Pass and 5.69 inches at Ross Dam.</p>																							
46 WEST VIRGINIA																							
Ripley	3	2100-			1	0	0	0	Extreme Cold														
Buckner Bend Rd.	4	1350EST			1	0	0	0	Extreme Cold														
<p>Two elderly women died similarly of exposure, in northwestern West Virginia. They slipped and fell in a parking lot and were not able to get up.</p>																							
Preston County	23 and 24	All Day			0	0	?	0	Ice Storm														
<p>Heavy icing downed power lines and caused 2000 residents to be without power.</p>																							
Marlington	31	All Day			0	0	4	0	Ice Jam Flood														
<p>A 200 to 300 ft. ice jam on Knapps Creek caused 8 to 10 families to be evacuated. A foot of water covered some streets and basements were flooded. Water reached up the first floor of one house.</p>																							
47 WISCONSIN																							
Southeast Half	3-4	2100-1700CST			0	0	6	0	Snow, Wind, and Blowing Snow														
<p>Heavy snow developed during the evening of the 3rd and ended by late morning on the 4th. Temperatures within a few degrees of freezing produced very high water-content snow which, coupled with accompanying northeast winds of 30 to 60 mph, caused considerable damage to trees and power lines. Snow accumulated 5" to 16" south and east of a line from about La Crosse to Ironwood, Michigan. Severe drifting snow produced 3 to 5 foot drifts that closed many roads across the southeast half of the state and virtually all roads in the area bounded by Madison, Milwaukee, and Green Bay. Washington County reported the greatest accumulations with 16" at Germantown and 15" at Holy Hill. Snow in Milwaukee ranged from 8" on the southeast side to 15" on the northwest side. Green Bay reported 9" and Madison 8".</p>																							

STORM DATA AND UNUSUAL WEATHER PHENOMENA

JANUARY 1982

PLACE	DATE	TIME - LOCAL STANDARD	LENGTH OF PATH (MILES)	WIDTH OF PATH (YARDS)	NO. OF PERSONS		ESTIMATED DAMAGE		CHARACTER OF STORM
					KILLED	INJURED	PROPERTY	CROPS	
WISCONSIN									
Statewide	7	0400-2400CST			2	0	0	0	Severe Cold
		A major outbreak of cold arctic air produced nighttime temperatures of -8° to -25° and wind chills down to -55° below zero. Two exposure deaths occurred in Reserve (Sawyer County) and in Merton Township (Waukesha County).							
Statewide	9-11				2	0	5	0	Severe Cold, Snow, Wind, Blowing Snow
		A major outbreak of bitterly cold arctic air produced minimum temperatures of -20° to -30° below coupled with sustained northwest winds up to 50 mph. Wind chill readings ranged between -70° and -110° below statewide for a 20 hour period on the 10th. Three separate snow episodes produced a total new snow of 2 to 5 inches which, coupled with the low temperatures and high winds, resulted in severely drifted snow and low visibilities on the 9th and 10th. About one-quarter of the state's roads became impassable. West winds on the 10th averaged 30 to 40 mph. Mukwonago, located in Waukesha County, measured a gust of 70 mph and sustained 50 mph winds during the morning and afternoon on the 10th. Temperatures of -25° below zero were recorded at Green Bay and Milwaukee on the morning of the 10th. At Milwaukee, with 112 years of temperature records, this tied the city's all-time low (recorded previously in 1875). Two exposure deaths occurred on the 10th in Salem (Kenosha County) and in Green Bay.							
Mukwonago, Waukesha County	12	PM			1	0			Severe Cold
		One man, disabled outside his home, froze to death in sub-zero weather.							
Statewide	15-17								Severe Cold, Snow, Wind, Blowing Snow
		Another bitterly cold air mass surged across the state causing temperature records to tumble once again. Minimum temperatures between -25° and -40° below zero were common. Mercer (Iron County) recorded -46° below zero on the morning of the 17th. Milwaukee established a new all-time low with -26° below zero on the 17th. (The coldest ever in 112 years of temperature records.) Antigo (Langlade County) recorded -39° below and Marinette (Marinette County) had -30°, both are all-time low temperatures for the locations. 20 to 40 mph winds accompanied the sub-zero temperatures and wind chills plunged to -100° below zero. Two separate periods of snow produced 1 to 3 inches of new snow which resulted in severe drifting. Many roads were closed.							
North Half	20-21	0900-0400CST							Snow
		Low water-content snow fell across the north half of the state. Accumulations ranged from 6 to 18 inches north of a LaCrosse - Fond du Lac line. Heaviest accumulations occurred across St. Croix, Dunn, and Chippewa Counties where 12 to 18 inches fell.							
Statewide	22-23				1	0			Blizzard North, Freezing Rain South
		An intense winter storm accompanied by heavy precipitation and high winds swept across the state. Snow, mixed with sleet and freezing rain accumulated 7 to 20 inches across the north half of the state; and mixed snow, sleet and freezing rain accumulated 1 to 6 inches across the south half. Superior (Douglas County) reported 19" of snow and Eau Claire 10" of snow. Sleet and freezing rain produced glaze across southern Wisconsin with local glaze accumulations of 3/8" in Kenosha and Racine Counties. 25 to 50 mph winds produced blizzard conditions in northwestern Wisconsin north of Eau Claire. Minor tree damage due to glaze was reported in Kenosha and Racine Counties. Virtually all highways from the Eau Claire area north to Lake Superior were closed on the 23rd. Temperatures plunged below zero statewide on the 24th, 25th, and 26th in the wake of the storm. One exposure death occurred in Kenosha on the 23rd.							
Madison, Dane County	27	PM			1	0			Severe Cold
		A man froze to death in a van.							
Statewide	30-31								Drifting Snow
		Southerly winds of 25 to 45 mph caused severe drifting snow. About one-fifth on the state's secondary roads became impassable.							
48 WYOMING									
Casper, Natrona County, and 1-80, Albany and Carbon Counties	05	AM&PM			0	4	4		Wind
		Wind gusts to 85 mph downed power poles causing electrical outages to most of Casper for 3-1/2 hours. High winds also broke windows and commercial signs while debris hurled by winds injured at least 4 people. Interstate 80 between Laramie and Rawlins was closed due to high wind and blowing snow.							
Jackson, Teton County	05	AM&PM			0	0	?		Winter storm
		Wind near 100 mph in open areas, combined with snow, blowing snow and avalanche problems isolated Jackson from the world Monday. The avalanche slid inside the Town of Jackson just after 1300MST from the Gros Ventre Butte and caused overflow flooding near the Meadowbrook Condominiums.							
Chugwater to Wheatland, Platte County	08	PM			0	0	4		Wind
		High winds overturned 4 trucks along Interstate 25 between Chugwater and Wheatland during the afternoon.							
Yellowstone National Park	08	AM			0	0	4		Wind
		Gusts to 68 mph buffeted the park and Cody area Friday. The main power line near Yankee Jim Canyon in the northern end of the park was downed about 0100 Friday cutting power to Mammoth and Gardiner, MT, until about 0730.							
Thermopolis, Hot Springs County	18	AM			0	0	3		Wind
		Winds estimated to 70 mph ripped the roof from a home in the Owl Creek vicinity northwest of Thermopolis.							
Gillette, Campbell County	24	1440MST			0	0	3		Wind
		The leading edge of a cold front moved through the Gillette area producing wind gusts to 69 mph during a 10-minute period starting about 1440 Sunday. The roof of a home blew off at the Foothills Mobile Home Park. Other homes received minor damage.							
Jackson, Teton County	24	AM&PM			0	0	0		Wind
		High winds racked Jackson Hole closing roads and ski lifts. Winds at 10,400-foot Rendezvous Peak indicated up to 120 mph and beyond.							
49 ALASKA									
Kotzebue Sound	4-5				0	0	5	0	Blizzard
		A strong low passed near the town of Kotzebue preceded by east winds to 35 mph and followed by west winds of 40 to 60 mph. Three airplanes were flipped over and several houses had roofs partially blown off. There was an extended period of wireout conditions with wind chills to 80 below.							
Arctic Slope	5-6				0	0	4	0	Blizzard
		Gale force west winds caused whiteout conditions and wind chill to 85 below over a 24 hour period. A convoy of 31 trucks was trapped on the Dalton Highway for about 20 hours. Aviation and construction operations were halted for a day throughout the Prudhoe Bay oilfield.							
South Coast	5-7				0	0	4	0	High Winds
		High winds blowing out of the Alaskan interior swept through Valdez for over 48 hours. Wind gusts hit 100 mph at the Valdez airport and over 60 mph in town. The strong winds caused delays in tanker traffic at the Port of Valdez.							
South Central	7-8				0	0	3	0	High Winds
		Strong winds blew across the Matanuska Valley for over 24 hours. Palmer reported wind gusts over 70 mph.							
50 HAWAII	NO REPORT RECEIVED								
51 PUERTO RICO	NONE REPORTED								
52 VIRGIN ISLANDS	NONE REPORTED								
53 PACIFIC	NO REPORT RECEIVED								

STORM DATA AND UNUSUAL WEATHER PHENOMENA

LATE REPORTS

CORRECTIONS

PLACE	DATE	TIME - LOCAL STANDARD	LENGTH OF PATH (MILES)	WIDTH OF PATH (YARDS)	NO. OF PERSONS				ESTIMATED DAMAGE	CHARACTER OF STORM
					KILLED	INJURED	PROPERTY	CROPS		

PLACE	DATE	TIME - LOCAL STANDARD	LENGTH OF PATH (MILES)	WIDTH OF PATH (YARDS)	NO. OF PERSONS				ESTIMATED DAMAGE	CHARACTER OF STORM
					KILLED	INJURED	PROPERTY	CROPS		

31 NORTH CAROLINA

NOVEMBER 1981

Coastal Sections of North Carolina 11- 15 Through-out the period
0 0 5 0 Coastal Flooding and Beach Erosion

A severe Atlantic storm that was nearly stationary caused severe beach erosion and some coastal flooding along sections of the North Carolina coast. The hardest hit was the outer banks from Kitty Hawk to Nags Head and Topsail Beach in Pender County. 5 dwellings were lost due to high tides and high waves from Kitty Hawk to Nags Head with several other dwellings and the motel sustaining damage. One motel and five homes were damaged on Topsail Beach. Severe beach erosion took place along the outer banks and along Topsail Beach.

41 TEXAS, Southern

SEPTEMBER 1981

Mason Co. 12 1930CST 0 0 ? ? Heavy Rain
A very localized but intense thunderstorm remained stationary over parts of south Mason Co. from 5 to 7:30 pm CST. Within the 2½ hour period rainfall amounted to some 6 inches along the Llano River south and southeast of Mason. Brief flash flooding mainly affected draws and small creeks.

Mason Co. 14 1755CST 0 0 ? ? Wind
Gillespie Co. 14 1900CST 0 0 ? ? Wind
Kerr Co. 14 1915CST 0 0 ? ? Wind

An almost east-west line of thunderstorms on a southward moving cold front produced several severe thunderstorm cells as it moved through these counties. One storm cell, after creating damaging high wind gusts around Brady in McCulloch Co., moved through northern Mason Co. causing scattered wind damage. In Gillespie Co. strong gusts left minor scattered damages with most concentrated wind gusts reported around Harper where they were estimated at 60 MPH. Small hail stones accompanied the storms through Gillespie Co. In Kerr Co. small hail and high wind gusts were reported, mainly over the northeast part of the county.

Edwards Co. 14 1945CST 0 0 ? ? Wind
Edwards Co. 14 2000CST 0 0 ? ? Hail
Real Co. 14 2000CST 0 0 ? ? Wind
Bandera Co. 14 2010CST 0 0 ? ? Wind
Kinney Co. 14 2110CST 0 0 ? ? Wind

A line of severe thunderstorms moving southward through these counties produced scattered, mainly superficial wind damages over the area. Gusts of 60 MPH were estimated in scattered locations in each of the counties. In Kinney Co. the severe storms only affected the northern part of the county. In Edwards Co. the high wind gusts were followed by damaging hail; a swath of stones ranging in size up to 1-3/4 inch diameter passed southward near Rocksprings.

Calhoun Co. 14 2015CST 0 0 ? ? Wind
A severe thunderstorm cell developed straddling the immediate coastline and waters of San Antonio Bay. No significant damages were reported although strong thunderstorm gusts hit the waters, beaches, and barrier island of Calhoun Co.

Bexar Co. 14 2245CST Funnel Cloud
A funnel cloud trailing a southward moving line of thunderstorms was spotted over west Bexar County near Hwy 16 and Loop 1604. It did not touch ground.

Brazoria Co. 14 1050CST Funnel Cloud
A small funnel cloud formed near a line of thundershowers moving inland from the coast. It passed aloft over east Brazoria Co. and dissipated after 5 minutes without touching ground.

49 ALASKA

AUGUST 1981

Yukon Delta 6 1645ADT 0 0 0 0 Funnel Cloud
A funnel cloud was seen dropping from a thunderstorm near the village of Emmonak and was visible for 15 to 20 minutes. A clear photograph of the funnel cloud was obtained.

13 IOWA

APRIL 1981

DELETE:
2 TORNADOES
1 Mile South Crawfordsville to Walcott, Washington, Louisa, Muscatine and Scott Counties (page 6), and 5 Mile Southwest Dixon to 1 Mile North DeWitt to 3 Mile East Charlotte, Scott and Clinton Counties (page 6).

ADD:
2 TORNADOES
listed below:

1 Mile South Crawfordsville to Walcott, Washington, Louisa, Muscatine and Scott Counties 3-4 2315- 1230CST ~50 50- 0 0 5 0 Tornado (F1)
Mostly skipping (Several livestock killed/injured)

5 Mile Southwest Dixon to 1 Mile North DeWitt to 3 Mile East Charlotte, Scott and Clinton Counties 4 0030- 0100 CST ~27 50- 0 0 6 0 Tornado (F1)
Mostly skipping. Several barns and farm out-buildings destroyed or damaged.

DELETE:
ONE THUNDERSTORM
in East Central Iowa and parts of NW Illinois (page 6).

ADD:
ONE THUNDERSTORM
listed below:

East Central Iowa and parts of NW Illinois 3-4 2200- 0100CST - - 0 0 6 0 Thunderstorm
Widespread wind damage to trees and power lines and structures.

40 TENNESSEE

MAY 1981

DELETE:
ONE TORNADO, HAIL
Near White House, Robertson County (page 16) occurred in April, not in May.

JUNE 1981

DELETE:
ONE TORNADO
in New Johnsonville and north of McEwen, Humphreys County (page 24).

ADD:
2 TORNADOES
listed below:

New Johnsonville, Humphreys County 6 0550CST ? ? 0 0 4 0 Tornado (F1)
A small tornado touched down briefly damaging trees, a garden and a barn. It is likely that this tornado was produced by the same thunderstorm which had produced tornadoes earlier in Madison and Henderson Counties.

North of McEwen, Humphreys County 6 0610CST ? ? 0 0 3 0 Tornado (F1)
A small tornado caused minor damage to a shed and damaged several trees when it touched down briefly. This tornado apparently came from the same thunderstorm which had produced tornadoes in Madison, Henderson, and Humphreys Counties.

STORM SUMMARY

JANUARY 1982

STATE	TORNADOES					HAILSTORMS			WINDSTORMS			LIGHTNING			FLOODING			HEAVY SNOWSTORMS AND BLIZZARDS				ICE STORMS				ALL OTHER			
	NUMBER	DAYS	DEATHS	INJURIES	DAMAGE	DEATHS	DAMAGE		DEATHS	INJURIES	DAMAGE	DEATHS	DAMAGE		DEATHS	INJURIES	DAMAGE	DEATHS	INJURIES	DAMAGE		DEATHS	INJURIES	DAMAGE		DEATHS	INJURIES	DAMAGE	
							PROP.	CROPS					PROP.	CROPS						PROP.	CROPS			PROP.	CROPS			PROP.	CROPS
Alabama	8	2		11	6				9	5			4	5	1	6						20	300	7	7				
Arizona																													
Arkansas	3	2		1	5																					1	?		
California	1	1		1																						22	678	8	4
Colorado									23	7	?				14	400	8	4	1										
Connecticut																													
Delaware																													
Florida	2	1																											
Georgia	1	1							2	5				1		4													
Idaho																													
Illinois																													
Indiana																													
Iowa																													
Kansas																													
Kentucky																													
Louisiana	1	1			4			3	2	5																			
Maine																													
Maryland & DC																													
Massachusetts																													
Michigan																													
Minnesota																													
Mississippi	2	2	1	17	6																								
Missouri																													
Montana																													
Nebraska																													
Nevada																													
New Hampshire																													
New Jersey																													
New Mexico																													
New York																													
North Carolina																													
North Dakota																													
Ohio																													
Oklahoma																													
Oregon																													
Pennsylvania																													
Rhode Island																													
South Carolina																													
South Dakota																													
Tennessee																													
Texas																													
Utah																													
Vermont																													
Virginia																													
Washington																													
West Virginia																													
Wisconsin																													
Wyoming																													
Alaska																													
Hawaii																													
Pacific																													
Puerto Rico																													
Virgin Islands																													

STORM SUMMARY

STATE	TORNADOES				HAILSTORMS				WINDSTORMS				LIGHTNING				@HEAVY SNOWSTORMS AND BLIZZARDS				# ICE STORMS				◇ ALL OTHER			
	NUMBER	DAYS	DEATHS	INJURIES	†DAMAGE	DEATHS	INJURIES	†DAMAGE		DEATHS	INJURIES	†DAMAGE		DEATHS	INJURIES	†DAMAGE		DEATHS	INJURIES	†DAMAGE		DEATHS	INJURIES	†DAMAGE				
								PROP. ERTY	CROPS			PROP. ERTY	CROPS			PROP. ERTY	CROPS			PROP. ERTY	CROPS			PROP. ERTY	CROPS			
Correction Tennessee	MAY	1981																										
Tennessee	2	2																										
Tennessee	JUNE	1981																										
Tennessee	4																											
Michigan	OCTOBER	1981																						1	1			
Late Reports North Carolina	NOVEMBER	1981																							5			

REFERENCE NOTES

† Storm damage categories are from	*	Miles instead of yards
1 to 9 as follows:	**	Yards instead of miles
1 Less than \$50	°	Includes crop damage
2 \$50 to \$500	@	Includes heavy sleet storm
3 \$500 to \$5,000	#	Freezing drizzle and freezing rain, commonly known as glaze
4 \$5,000 to \$50,000	‡	Not received or incomplete
5 \$50,000 to \$500,000		
6 \$500,000 to \$5 Million		
7 \$5 Million to \$50 Million		
8 \$50 Million to \$500 Million		
9 \$500 Million to \$5 Billion		

"F" SCALE DEFINITIONS

0 =	40-72	MPH	Breaks branches off trees; signboards damaged.
1 =	73-112	MPH	Peels surface off roofs; trailer houses pushed or damaged.
2 =	113-157	MPH	Tears roofs off frame houses and outbuildings; cars blown off highway.
3 =	158-206	MPH	Windows of skyscrapers smashed; frame houses destroyed; cars lifted off ground.
4 =	207-260	MPH	Skyscrapers twisted; frame houses leveled; cars blown some distance.
5 =	261-	MPH	or greater.

USCOMM-NOAA-ASHEVILLE, N.C. 1982-2100

REVISED AND GRAPHICALLY SPECTACULAR...

STORM DATA

THE OFFICIAL WEATHER CHRONICLE
OF VIOLENT WEATHER
IN EVERY STATE.

A MONTHLY STATE BY STATE
SUMMARY OF DAMAGE, INJURY
AND DEATH STATISTICS

DETAILED INFORMATION
ON ALL REPORTED STORMS
AND UNUSUAL WEATHER
PHENOMENA

MAPS CLEARLY TRACE
STORM PROGRESSION

TORNADOES

HURRICANES

ICE STORMS

BLIZZARDS

HAIL

----- ORDER BLANK -----

RETURN TO:

NATIONAL CLIMATIC CENTER, FEDERAL BUILDING, ASHEVILLE, N.C. 28801

- I certainly am interested in the newly revised STORM DATA publication.
Please enter my one (1) year subscription at \$ 12.60.*

Subscribe now and receive for a limited time only, a free color map of U.S. tornadoes (1916-1980) and a free chart with photographs and descriptions of the Fujita Tornado Scale.

Name _____

Address _____

City _____ State _____ Zip _____

TOTAL AMOUNT ENCLOSED \$ _____

Please make check or money order payable to: DEPARTMENT OF COMMERCE-NOAA-NCC

U.S. DEPARTMENT OF COMMERCE
NATIONAL CLIMATIC CENTER
FEDERAL BUILDING
ASHEVILLE, N.C. 28801

POSTAGE AND FEES PAID
U. S. DEPARTMENT OF COMMERCE
COM 210



THIRD CLASS
BULK RATE