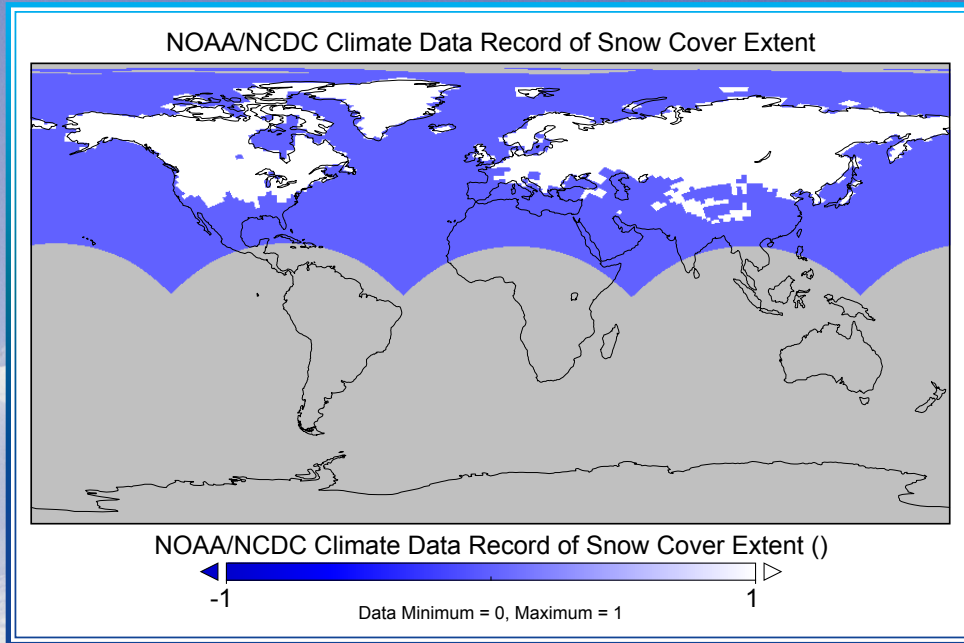


NOAA's Climate Data Record (CDR) Program

SNOW COVER EXTENT SCE



SCE CLIMATE DATA RECORD SPECIFICATIONS

- Northern Hemisphere
- 89x89 Grid
- Weekly Product
- 1966–Present
- Updated Monthly

INPUTS TO THE SCE CLIMATE DATA RECORD

Daily Interactive Multisensor Snow and Ice Mapping System (IMS) Data

- Satellite Imagery
- Snow/Ice Analysis Maps
- Nation Centers for Environmental Prediction (NCEP) Model Data
- Surface Observation

SOME USES OF THE SCE CLIMATE DATA RECORD

- Studying Long-Term Climate Changes
- Initializing Weather Prediction Models
- Estimating Snow Melt Runoff
- Analyzing Surface Albedo

SCE CLIMATE DATA RECORD

<http://www.ncdc.noaa.gov/cdr/operationalcdrs.html>

CLIMATE DATA RECORD PROGRAM INFORMATION

<http://www.ncdc.noaa.gov/cdr/index.html>

