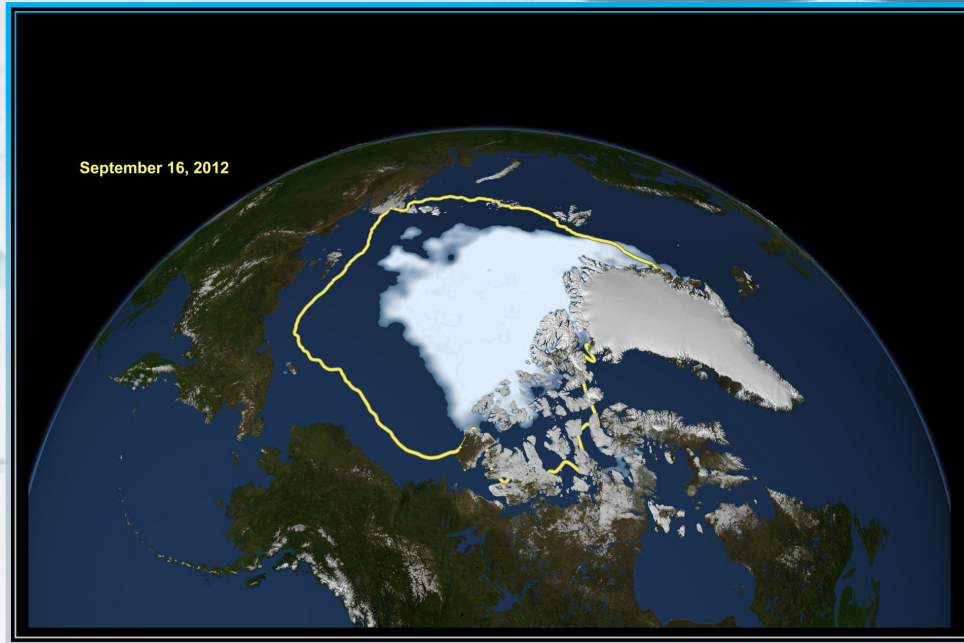


NOAA's Climate Data Record (CDR) Program

SEA ICE CONCENTRATION SIC



SIC CLIMATE DATA RECORD SPECIFICATIONS

- Polar Coverage (above 31°N and below 39°S)
- 25kmx25km Resolution
- Daily and Monthly Products
- 1978–2012
- Updated Quarterly

INPUTS TO THE SIC CLIMATE DATA RECORD

- Special Sensor Microwave Imager/Sounder [SSM/I(S)] Daily Polar Gridded Brightness Temperatures
- NASA Team Sea Ice Concentrations
- Bootstrap Sea Ice Concentrations
- Snow Melt Onset Estimates
- Climatological Minimum Sea Ice Mask (CMIN)
- Ocean and Land Masks

SOME USES OF THE SIC CLIMATE DATA RECORD

- Studying, Modeling, and Monitoring Climate Variability
- Providing guidance for National Defense, Shipping Industry, and Policy Makers
- Reporting Effects on Fisheries, Natural Resources, and Native Communities
- Studying Impacts to Cryosphere, Ocean, and Atmosphere
- Informing Educators, Students, Media, and the General Public

SIC CLIMATE DATA RECORD

<http://www.ncdc.noaa.gov/cdr/operationalcdrs.html>

CLIMATE DATA RECORD PROGRAM INFORMATION

<http://www.ncdc.noaa.gov/cdr/index.html>

Photo: NASA/Kathryn Hansen



www.climate.gov
www.ncdc.noaa.gov

Protecting the past... Revealing the future