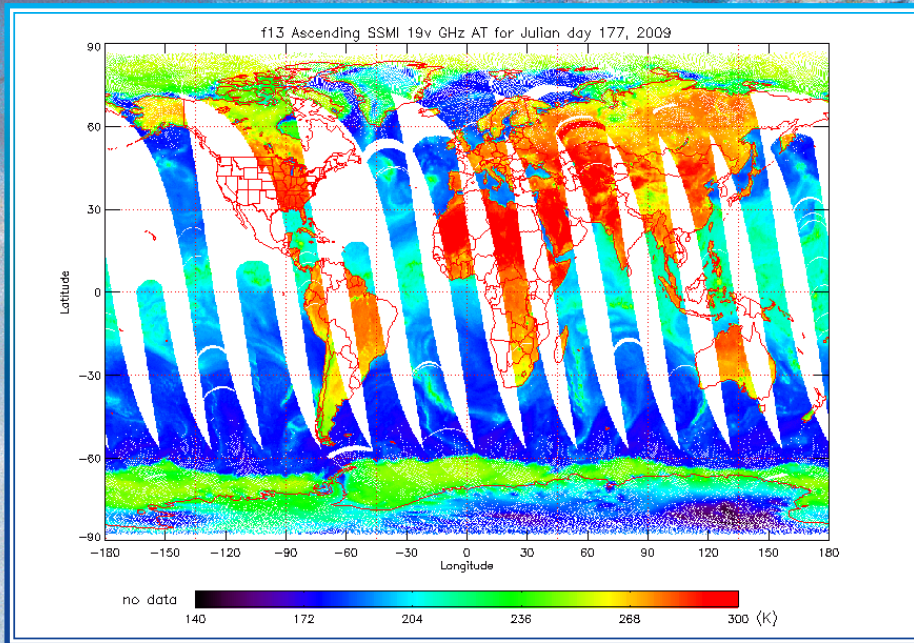


NOAA's Climate Data Record (CDR) Program

REMOTE SENSING SYSTEMS (RSS) SSMI(S) BRIGHTNESS TEMPERATURE *SSMI(S)*



SSMI(S) CLIMATE DATA RECORD SPECIFICATIONS

- Global Coverage
- Resolution varies by Channel (14 x 16 km, 45 x 70 km)
- 101 Minutes Per Orbit
- 1987 - Present
- Updated Monthly

INPUTS TO THE SSMI(S) CLIMATE DATA RECORD

- Navy-NESDIS Special Sensor Microwave Imager/Sounder [SSMI(S)]
- Antenna Temperature

SOME USES OF THE SSMI(S) CLIMATE DATA RECORD

- Input into Precipitation Products (e.g., GPCP, PPS)
- Determining Sea Surface Winds
- Calculating Sea Ice Extent
- Input into Hydrological Products
- Estimating Cloud Liquid Water

SSMI(S) CLIMATE DATA RECORD

<http://www.ncdc.noaa.gov/cdr/operationalcdrs.html>

CLIMATE DATA RECORD PROGRAM INFORMATION

<http://www.ncdc.noaa.gov/cdr/index.html>

