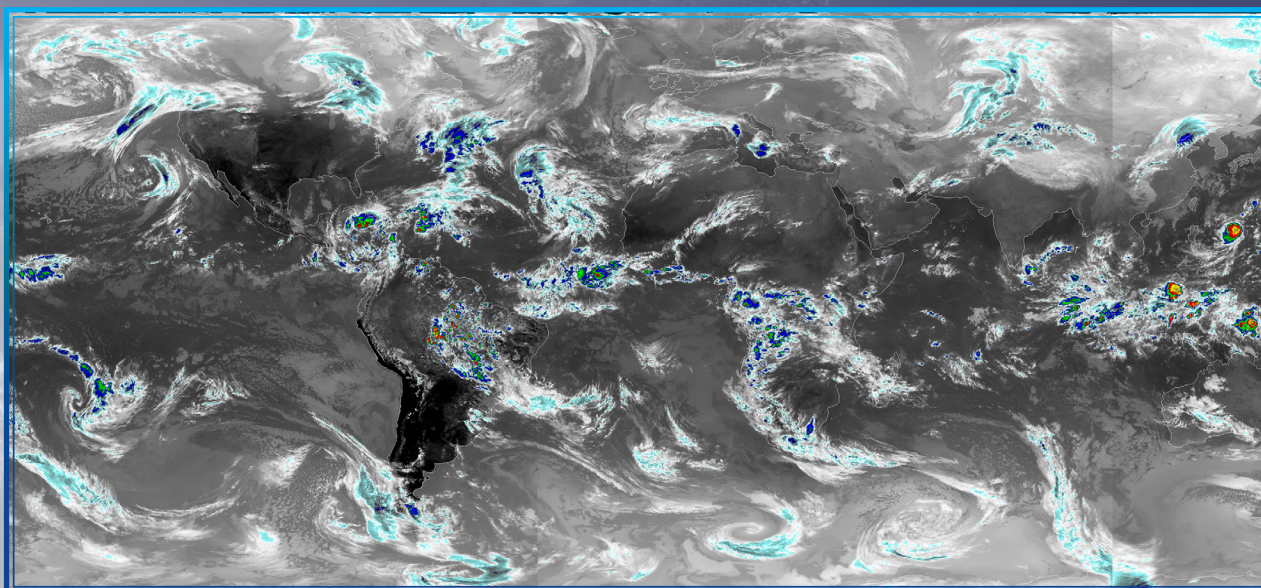


NOAA's Climate Data Record (CDR) Program

GRIDDED SATELLITE DATA FROM ISCP B1 IR WINDOW CHANNEL

GridSat - B1



GRIDSAT-B1 CLIMATE DATA RECORD SPECIFICATIONS

- Global Coverage (70°S to 70°N)
- 8km Resolution
- Hourly Product (every 3 hours)
- 1980–2012
- Updated Annually

INPUTS TO THE GRIDSAT-B1 CLIMATE DATA RECORD

- All Global Geostationary Meteorological Satellites
 - GOES, GMS, Meteostat, MTS, SMS (30+)

SOME USES OF THE GRIDSAT-B1 CLIMATE DATA RECORD

- Input into Precipitation Products
- Applying Data to Cloud Products
- Input into Surface Radiation Products
- Monitoring Tropical Convection
- Estimating Surface Temperatures and Precipitation in Data-Sparse Regions

GRIDSAT-B1 CLIMATE DATA RECORD

<http://www.ncdc.noaa.gov/cdr/operationalcdrs.html>

CLIMATE DATA RECORD PROGRAM INFORMATION

<http://www.ncdc.noaa.gov/cdr/index.html>

