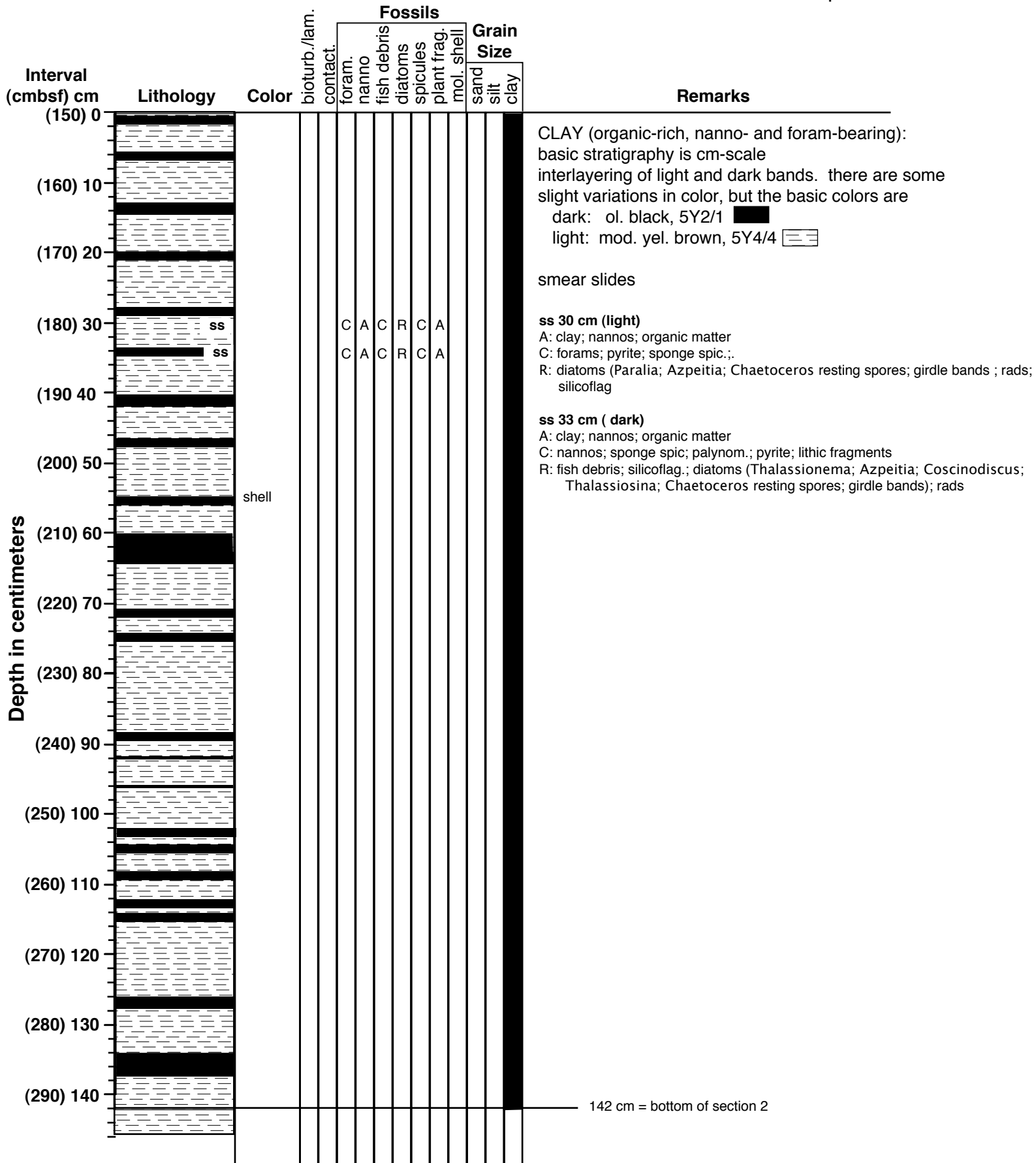


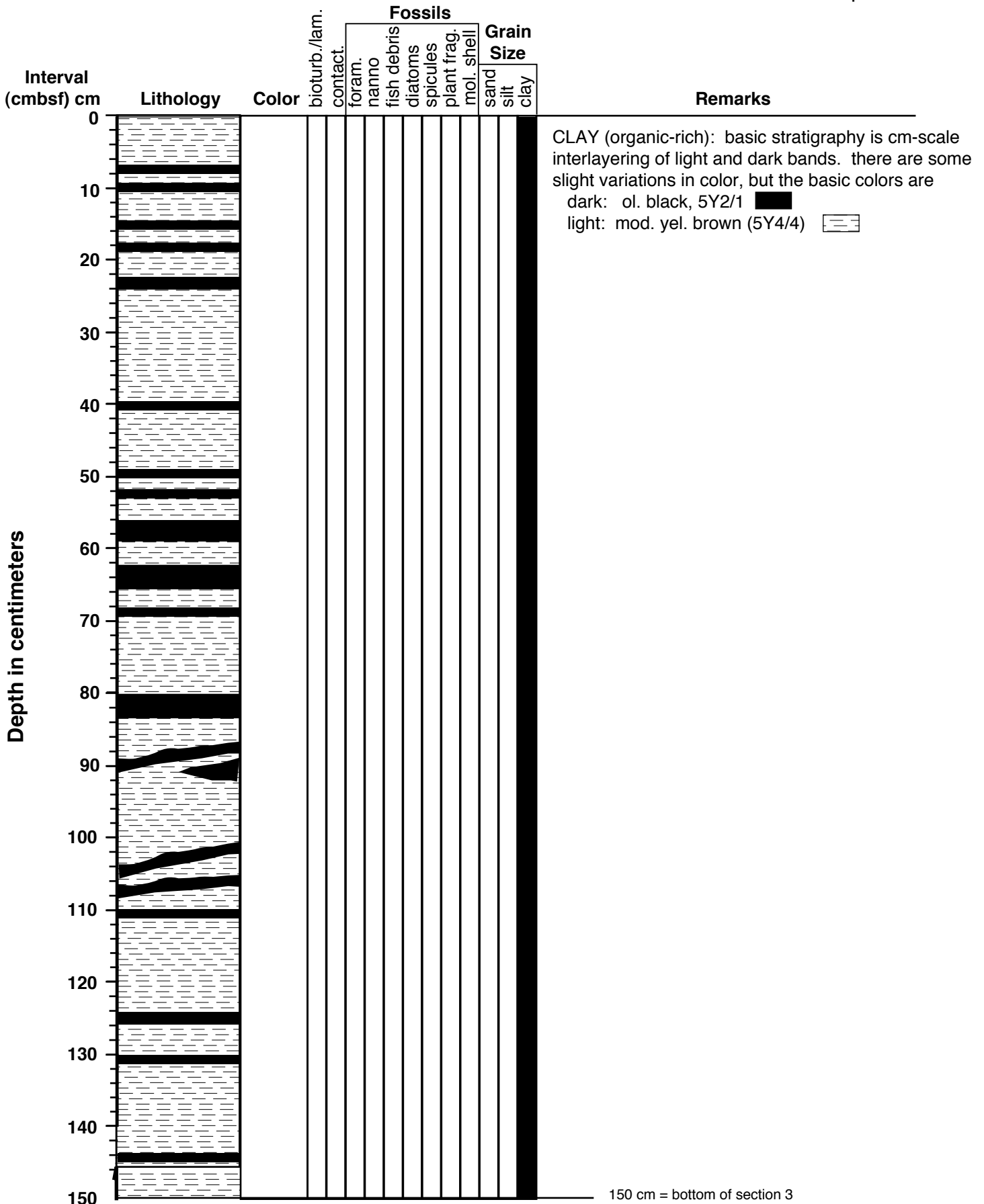
95 cm = bottom of section 1; 387 cmbsf = base of core GC31

Fossils: A=Abundant C=Common R=Rare B=Barren ss=smear slide  
 Contacts: S=Sharp G=gradational M=mottled



142 cm = bottom of section 2

Fossils: A=Abundant C=Common R=Rare B=Barren ss=smear slide  
 Contacts: S=Sharp G=gradational M=mottled



Depth in centimeters

Fossils: A=Abundant C=Common R=Rare B=Barren ss=smear slide  
 Contacts: S=Sharp G=gradational M=mottled