



Texas Crop Progress and Condition

Southern Plains Regional Field Office
Post Office Box 70 Austin, Texas 78767
(800) 626-3142 · FAX (855) 270-2725 · www.nass.usda.gov/tx

Issue: TX-CW0419

Weekly Summary for February 18-24

Released: February 25, 2019

Windy conditions were experienced across much of the state. Rainfall ranged from 0.5 up to 3 inches in the Blacklands and East Texas. However, the rest of the state received little to no precipitation. There were 5.3 days suitable for fieldwork.

Small Grains: Winter wheat irrigation was active where available in the High Plains and South Texas. Non-irrigated wheat was showing signs of stress from lack of moisture in the Northern High Plains. High winds in the Northern Low Plains damaged winter wheat and depleted much needed soil moisture. Small grain were making good progress in South Texas, but progress was varied in the Blacklands.

Row Crops: Field preparations were underway in anticipation of corn planting in the Cross Timbers, while producers in the Blacklands had to delay work due to wet conditions. Corn planting was active in the Upper Coast and South Texas. Sorghum planting continued in the Coastal Bend. Producer were actively planting sunflowers in South Texas.

Fruit, Vegetable and Specialty Crops: Fruit trees were blooming in the Cross Timbers, the Trans-Pecos and the Edwards Plateau. Vegetable producers in South Texas were harvesting spinach and cabbage, watering onions and planting potatoes. Sugarcane harvest continued in the Lower Valley.

Livestock, Range and Pasture: Livestock condition across the state remained mostly fair to good. Producers continued using supplemental feeding across much of the state. Temperature changes created respiratory problems for cattle in the Blacklands. Feral hog activity was high in the Blacklands and East Texas. Pasture and range condition was rated 67 percent fair to good.

Crop Condition

Crop	Percent of Acreage					Index ¹	
	Excellent	Good	Fair	Poor	Very Poor	2019	2018
Wheat	8	30	41	17	4	65	(NA)
Oats	3	31	40	7	19	58	(NA)
Range and Pasture	5	31	36	22	6	--	--

¹ The formula for the condition index is $I = (5V + 25P + 60F + 90G + 110E)/100$ where I = crop condition index and V, P, F, G, E = percentage of crop rated very poor, poor, fair, good, excellent.

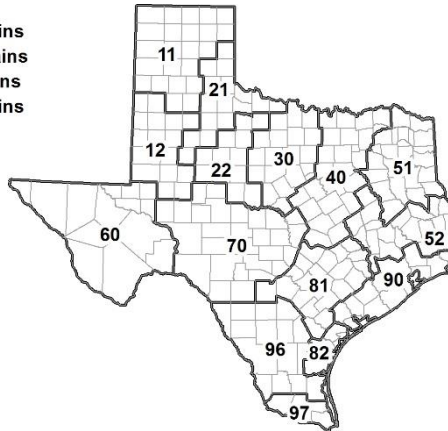
(NA) Not available.

Soil Moisture and Days Suitable by District

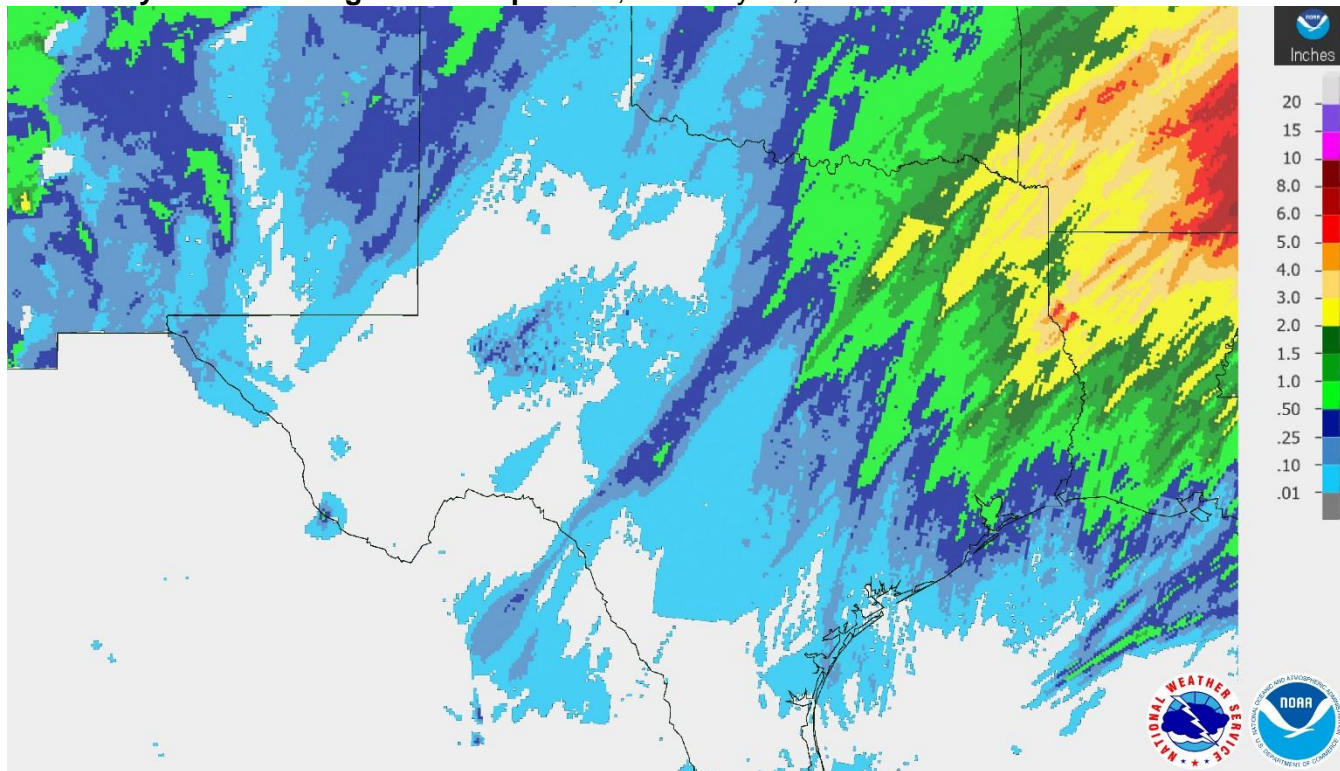
District	Topsoil Moisture Condition by District				Subsoil Moisture Condition by District				Days Suitable for Fieldwork
	Percentage of Acreage				Percentage of Acreage				
	Very Short	Short	Adequate	Surplus	Very Short	Short	Adequate	Surplus	
11	31	34	35	0	17	40	43	0	5.6
12	35	51	14	0	17	50	33	0	6.2
21	21	33	43	3	7	45	48	0	6.1
22	1	35	61	3	1	7	77	15	6.2
30	2	7	87	4	1	3	93	3	5.2
40	0	2	41	57	0	0	37	63	3.0
51	0	0	40	60	0	0	38	62	5.1
52	1	2	49	48	1	1	53	45	4.9
60	33	27	40	0	33	30	37	0	6.3
70	3	34	61	2	1	24	74	1	6.9
81	0	9	68	23	0	7	77	16	4.8
82	0	10	85	5	0	3	94	3	6.3
90	0	0	30	70	0	0	23	77	2.8
96	3	40	56	1	16	25	59	0	6.5
97	21	58	21	0	20	60	20	0	5.1
State	15	27	42	16	9	25	48	18	5.3

Texas Agricultural Districts

- 11 Northern High Plains
- 12 Southern High Plains
- 21 Northern Low Plains
- 22 Southern Low Plains
- 30 Cross Timbers
- 40 Blacklands
- 51 North East
- 52 South East
- 60 Trans-Pecos
- 70 Edwards Plateau
- 81 South Central
- 82 Coastal Bend
- 90 Upper Coast
- 96 South
- 97 Lower Valley

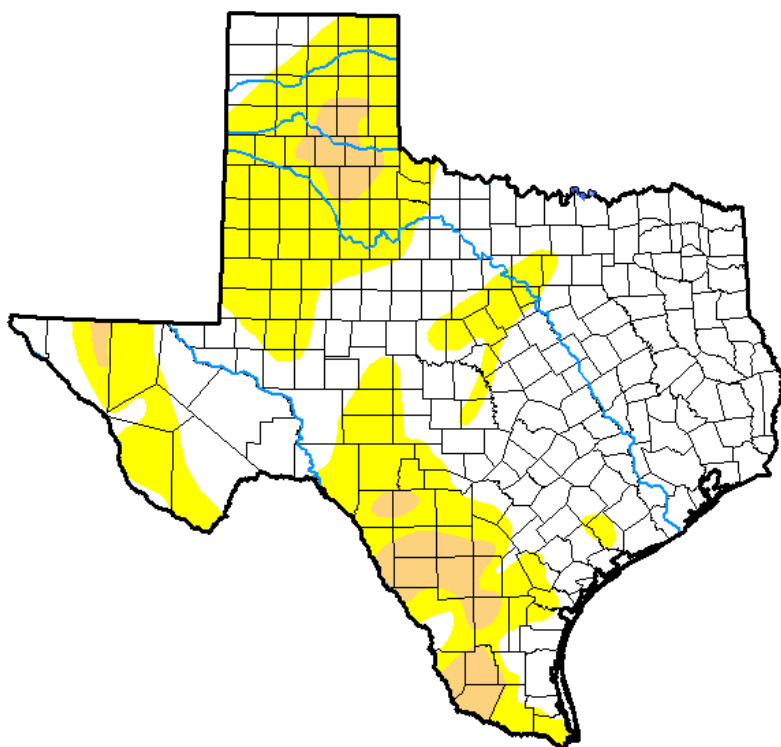


Seven Day Observed Regional Precipitation, February 24, 2019.



Source: National Weather Service, www.nws.noaa.gov.

Drought Monitor, Valid February 19, 2019.



Drought Conditions (Percent Area)

	None	D0-D4	D1-D4	D2-D4	D3-D4	D4
Current	59.54	40.46	6.63	0.00	0.00	0.00
Last Week <i>02-12-2019</i>	64.76	35.24	3.06	0.00	0.00	0.00
3 Months Ago <i>11-20-2018</i>	97.73	2.27	0.80	0.00	0.00	0.00
Start of Calendar Year <i>01-01-2019</i>	92.99	7.01	1.32	0.00	0.00	0.00
Start of Water Year <i>09-25-2018</i>	57.46	42.54	20.19	7.03	0.96	0.00
One Year Ago <i>02-20-2018</i>	11.90	88.10	70.76	37.56	11.13	0.00

Intensity:

- D0 Abnormally Dry
- D1 Moderate Drought
- D2 Severe Drought
- D3 Extreme Drought
- D4 Exceptional Drought

The Drought Monitor focuses on broad-scale conditions. Local conditions may vary. See accompanying text summary for forecast statements.

Author:

Brad Rippey
U.S. Department of Agriculture



Source: National Drought Mitigation Center, a partnership with USDA, U.S. Department of Commerce/NOAA, <http://droughtmonitor.unl.edu>.