

# Alaska

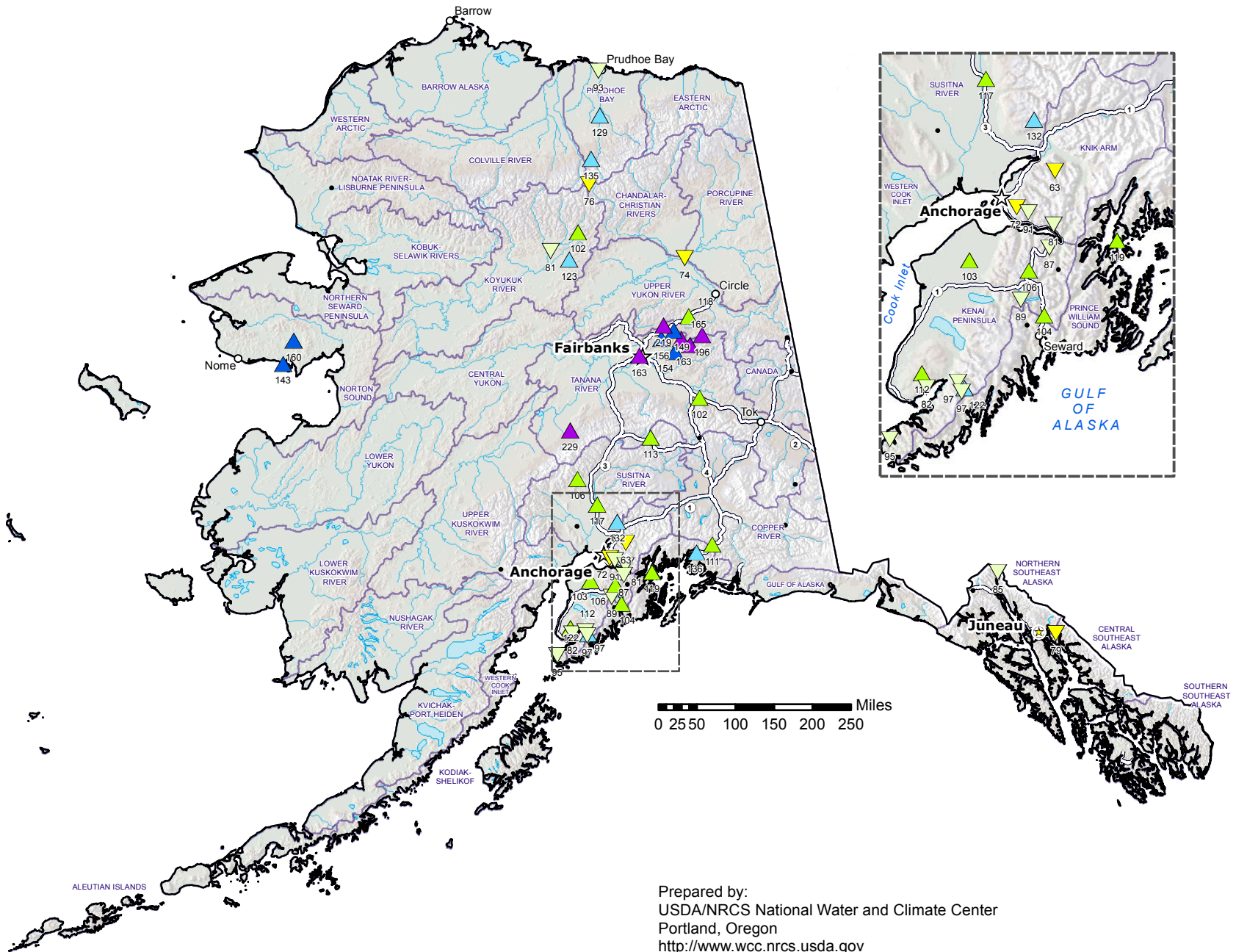
## SNOTEL Water Year to Date (WYTD) Precipitation % of Normal

**Jan 31, 2018**

**Current WYTD  
Precipitation  
% of 1981-2010  
Average**

- ▲ > 160%
- ▲ 140-160%
- ▲ 120-139%
- ▲ 100-119%
- ▼ 80-99%
- ▼ 60-79%
- ▼ 40-59%
- ▼ 1-39%
- +
- Unavailable\*

*Provisional Data  
Subject to Revision*



Prepared by:  
USDA/NRCS National Water and Climate Center  
Portland, Oregon  
<http://www.wcc.nrcs.usda.gov>

*\* Data unavailable at time of posting or unavailable long-term normal.*