

Alaska SNOTEL Snow Depth

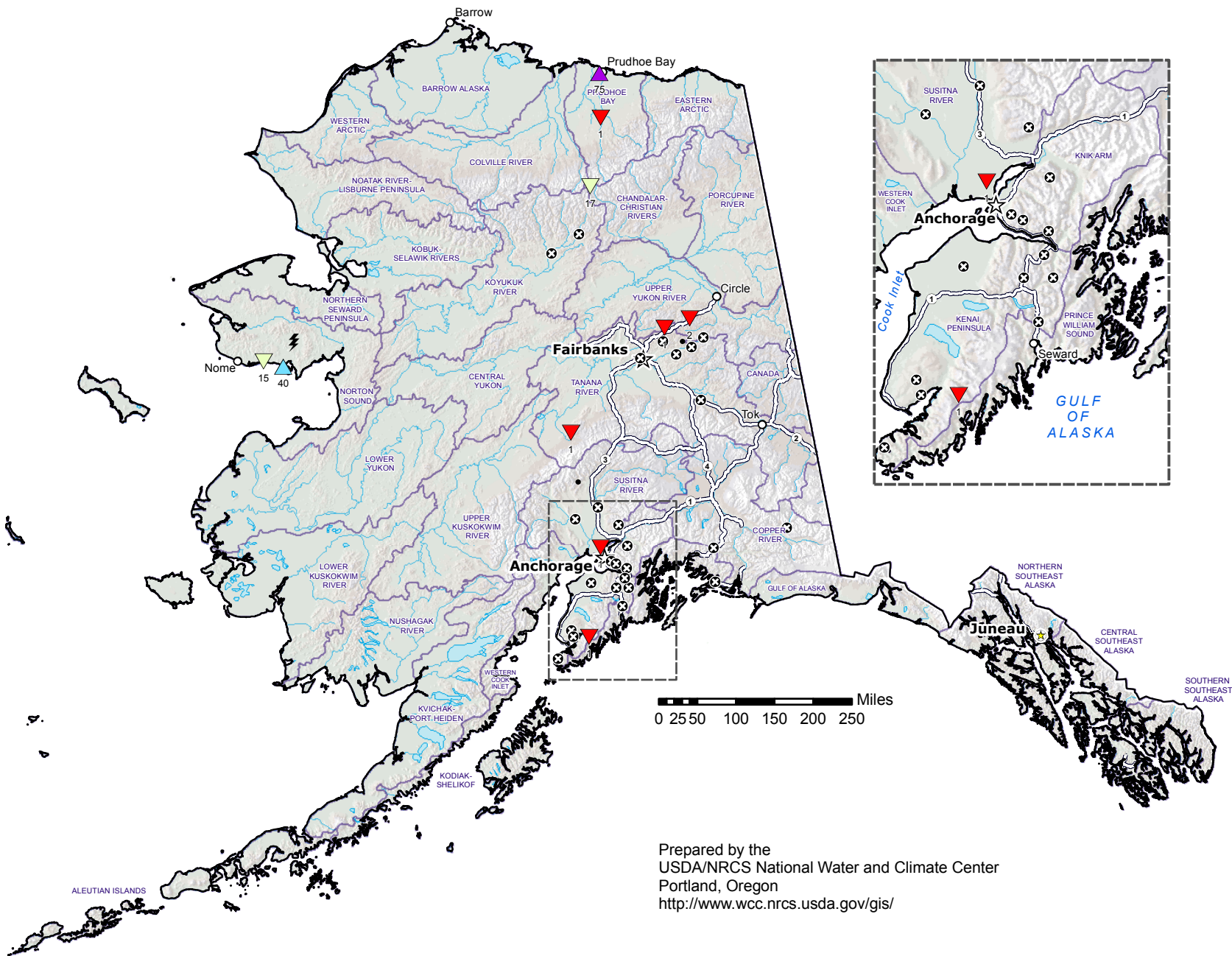
Sep 30, 2011

Current Snow Depth (inches)

- ▲ > 60"
- ▲ 49 - 60"
- ▲ 37 - 48"
- ▲ 25 - 36"
- ▲ 13 - 24"
- ▲ 7 - 12"
- ▲ 4 - 6"
- ▲ < 4"
- ⊗ Snow free
- Unavailable*
- ⚡ Data spike**

* Data unavailable at time of posting or snow depth sensor not available at site
 ** A "data spike" is a gain or loss of more than 100 inches in 1 day

**Provisional Data
 Subject to Revision**



Prepared by the
 USDA/NRCS National Water and Climate Center
 Portland, Oregon
<http://www.wcc.nrcs.usda.gov/gis/>

Automated snow depth measurements are known to occasionally read spuriously large during precipitation events. Snow depth is also difficult to accurately measure at near-snow free conditions; data should be used with caution.