

Alaska SNOTEL Snow Density

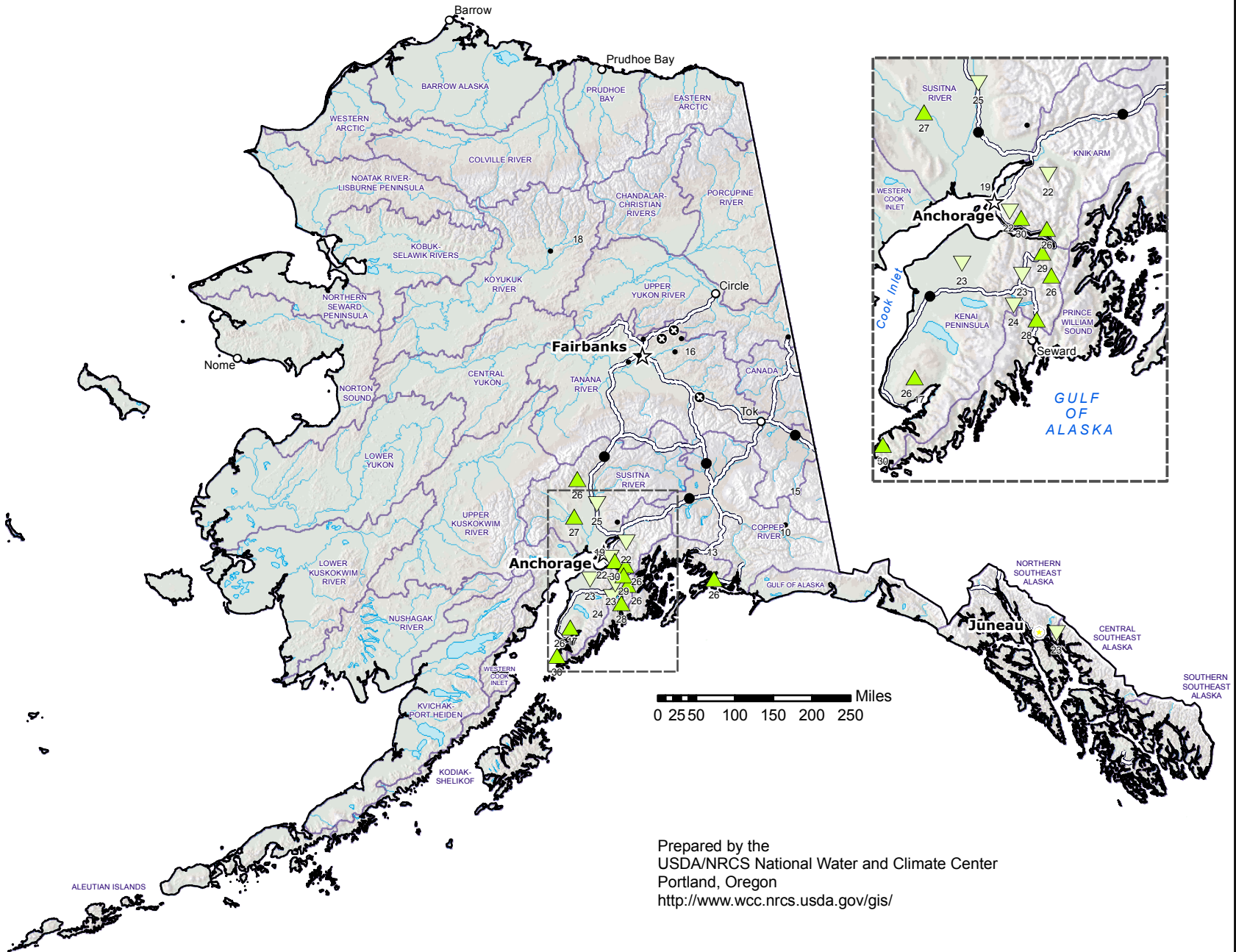
Dec 03, 2010

Current Snow Density (%)

- ▲ > 50%
- ▲ 41 - 50%
- ▲ 31 - 40%
- ▲ 26 - 30%
- ▲ 21 - 25%
- ▲ 16 - 20%
- ▲ 11 - 15%
- ▲ < 11%
- ⊗ Snow free
- Unavailable*

* Data unavailable at time of posting or snow depth sensor not available at site

**Provisional Data
Subject to Revision**



0 25 50 100 150 200 250 Miles

Prepared by the
USDA/NRCS National Water and Climate Center
Portland, Oregon
<http://www.wcc.nrcs.usda.gov/gis/>

Snow depth and snow pillow data are used to calculate density. Automated snow depth measurements are known to occasionally read spuriously large during precipitation events. Snow depth is also difficult to accurately measure at near-snow free conditions; data should be used with caution.