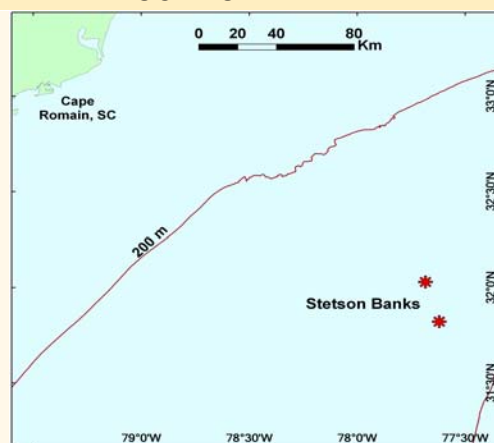
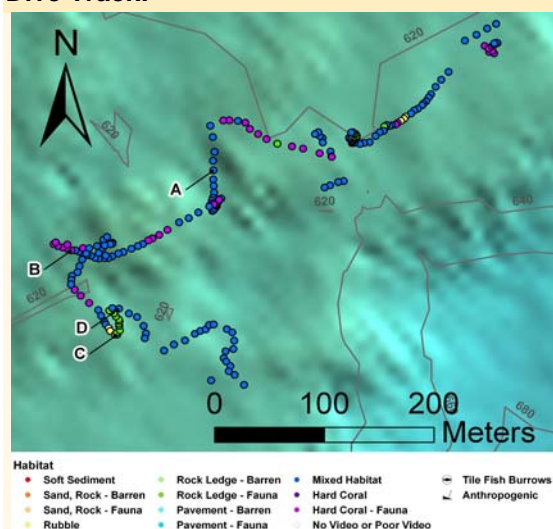


DIVE NUMBER: JSLI-4903**STUDY AREA: Stetson Banks**

STATION OVERVIEW	
Project	Life on the Edge 2005
Principal investigators	SW Ross ¹ MS Nizinski, E Baird, C Morrison
PI Contact Info ¹	Center for Marine Science, 5600 Marvin Moss Ln., Wilmington, NC 28409
Purpose	Mapping of deep coral banks, ecological studies of macroinvertebrates and fishes, paleoclimate studies, coral genetics and education outreach
Vessel	R/V Seward Johnson, Johnson Sea Link I Submersible
Science Divers	M Nizinski (bow), D Angell (stern)
External Video Tapes	4 mini DVs
Internal Video Tapes	2 mini DVs
Digital Still Photos	0
Positioning System	dGPS
CTD File	<input checked="" type="checkbox"/>
Specimens Collected	<input checked="" type="checkbox"/>
Other	Hard copies of bow and stern audio logs
Acknowledgements	NOAA-OE, NOAA Fisheries, USGS, UNCW, NC Museum of Natural Sciences
SEADESC Analyst	A Zilg
Date Compiled	8/19/2011
PI Station Number	JSLI-05-4903

GENERAL LOCATION**Dive Track:****DIVE DATA**

Date	27-Oct-05
Minimum Bottom Depth (m)	613
Maximum Bottom Depth (m)	633
Start Bottom Time (EDT)	8:30
End Bottom End (EDT)	10:21
Starting Latitude (N)	32° 01.122'
Starting Longitude (W)	77° 40.004'
Ending Latitude (N)	32° 00.948'
Ending Longitude (W)	77° 40.163'
Surface Current (Kts)	0.2
Bottom Current (Kts)	0.1

Image A: Mixed Habitat
32° 01.048' N, 77° 40.159' W



DIVE NUMBER: JSLI-4903

STUDY AREA: Stetson Banks

IMAGE GALLERY

* indicates image position is approximated

**Image B: Hard Corals -
with Attached Fauna**

32° 01.006' N, 77° 40.242' W



**Image C: Rock Ledge -
with Attached Fauna**

32° 00.963' N, 77° 40.205' W



Image D: Mixed Habitat

32° 00.980' N, 77° 40.222' W



RELEVANT WORK AND/OR LITERATURE CITED

- | | |
|-------------------------------------|---------------------------------|
| Stetson (1961) | Williams et al. (2006) |
| Stetson et al. (1962) | Williams et al. (2007) |
| EEZ-SCAN 87 Scientific Staff (1991) | Ross and Nizinski (2007) |
| Reed (2002) | Ross and Quattrini (2007, 2009) |
| Reed and Ross (2005) | |
| Reed et al. (2006) | |

BIOLOGICAL ENVIRONMENT

Very few fishes were observed on this dive and were represented by very few individuals. Fishes observed included *Laemonema melanurum*, *Nezumia sclerorhynchus*, *Squalis cubensis*, a hatchet fish, and a large charcarinid. Motile invertebrates were rare. *Eumunida picta* and *Bathynectes* sp. were observed away from hard coral matrices. Echinoderms were common and included pillow stars, urchins, and other sea stars. Corals and sponges were abundant. *Plumarella* sp. appeared to be the dominant coral species. Other octocorals were extremely abundant, but too small to be properly identified from the video. Individual colonies of *Lophelia pertusa*, *Enallopsammia profunda*, and *Stylaster* sp., were common, with occasional matrices being formed by *L. pertusa* and *E. profunda*. Cup corals were abundant in a patchy distribution. Demosponges were abundant throughout the dive and hexactinellid sponges were common in some areas.

PHYSICAL ENVIRONMENT

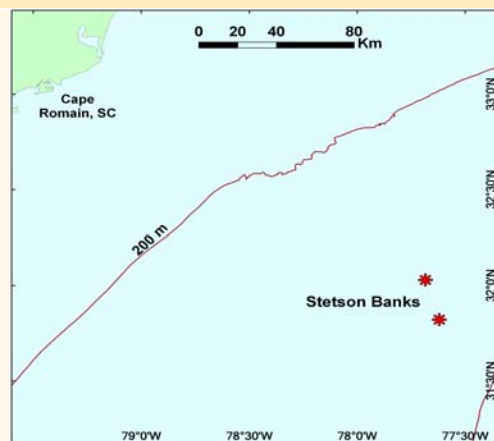
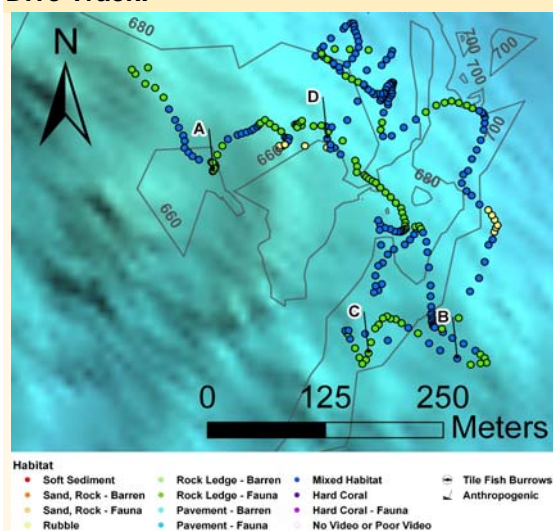
This dive transected four habitat types: 1) hard corals with attached fauna, 2) rubble, 3) mixed, and 4) rock ledge with attached fauna. Rubble habitat was the least common. The majority of the area was mixed habitat with numerous attached corals and sponges. Hard corals did not dominate this area and rarely created matrices characteristic of hard coral habitat. Hard coral habitat was a mix of *L. pertusa* and *E. profunda*. The entire dive was low profile (< 1m), with only slightly more relief on hard coral areas and rock ledges. Rock ledges were rare. Current was steady around 0.1 - 0.2 kn.

ADDITIONAL COMMENTS

The external bow video was captured on 2 mini DVs and archived on 2 DVDs. External stern video was captured on 2 mini DVs and archived on 2 DVDs. Internal bow video was captured on 2 mini DVs and archived on 2 DVDs. The video quality was clear.

DIVE NUMBER: JSLI-4904**STUDY AREA: Stetson Banks**

STATION OVERVIEW	
Project	Life on the Edge 2005
Principal investigators	SW Ross ¹ MS Nizinski, E Baird, C Morrison
PI Contact Info ¹	Center for Marine Science, 5600 Marvin Moss Ln., Wilmington, NC 28409
Purpose	Mapping of deep coral banks, ecological studies of macroinvertebrates and fishes, paleoclimate studies, coral genetics and education outreach
Vessel	R/V Seward Johnson, Johnson Sea Link I Submersible
Science Divers	A Quattrini (bow), M Palmer (stern)
External Video Tapes	6 mini DVs
Internal Video Tapes	3 mini DVs
Digital Still Photos	0
Positioning System	dGPS
CTD File	<input checked="" type="checkbox"/>
Specimens Collected	<input checked="" type="checkbox"/>
Other	Hard copies of bow and stern audio logs
Acknowledgements	NOAA-OE, NOAA Fisheries, USGS, UNCW, NC Museum of Natural Sciences
SEADESC Analyst	A Zilg
Date Compiled	9/1/2011
PI Station Number	JSLI-05-4904

GENERAL LOCATION**Dive Track:****DIVE DATA**

Date	27-Oct-05
Minimum Bottom Depth (m)	649
Maximum Bottom Depth (m)	705
Start Bottom Time (EDT)	16:29
End Bottom End (EDT)	18:52
Starting Latitude (N)	31° 50.808'
Starting Longitude (W)	77° 36.833'
Ending Latitude (N)	31° 50.792'
Ending Longitude (W)	77° 36.741'
Surface Current (Kts)	1
Bottom Current (Kts)	1

Image A: Rock Ledge - with Attached Fauna
31° 50.759' N, 77° 36.786' W



DIVE NUMBER: JSLI-4904

STUDY AREA: Stetson Banks

IMAGE GALLERY

* indicates image position is approximated

Image B: Mixed Habitat

31° 50.642' N, 77° 36.599' W



**Image C: Rock Ledge -
with Attached Fauna**

31° 50.652' N, 77° 36.679' W



Image D: Mixed Habitat

31° 50.771' N, 77° 36.713' W



RELEVANT WORK AND/OR LITERATURE CITED

- | | |
|-------------------------------------|---------------------------------|
| Stetson (1961) | Williams et al. (2006) |
| Stetson et al. (1962) | Williams et al. (2007) |
| EEZ-SCAN 87 Scientific Staff (1991) | Ross and Nizinski (2007) |
| Reed (2002) | Ross and Quattrini (2007, 2009) |
| Reed and Ross (2005) | |
| Reed et al. (2006) | |

BIOLOGICAL ENVIRONMENT

The two most common fish species observed on this dive were *Laemonema melanurum*, and *Nezumia sclerorhynchus*. Other species included *Eptatretus lopheliae*, *Beryx decadactylus*, *Trachyscorpia cristulata*, *Conger oceanicus*, and *Polyprion americanus*. Motile invertebrates included *Bathynectes* sp. crabs, galatheid crabs, and urchins. Octocorals were the most abundant organisms and included primnoids, isidids, and plexaurids. Some individual scleractinians were present such as *Enallopsammia profunda* and *Lophelia pertusa*. *Stylaster* sp. and cup corals were abundant in places, but patchy in distribution. Flytrap anemones were common, and hexatinellid sponges were abundant.

PHYSICAL ENVIRONMENT

Currents were strong throughout this dive and the visibility was approximately 20-30 ft. The majority of the dive took place over mixed habitat; rock ledges with attached fauna were common. Very few areas of rubble habitat were encountered. Rock ledges were of moderate relief (0.5-1 m) with numerous overhangs. Mixed habitat had patchy distributions of attached fauna. Mixed and rubble habitats appear to have a thin layer of sediment on top. Water mixing was visible and recorded on video. Garbage was also observed on the bottom.

ADDITIONAL COMMENTS

The external bow video was captured on 3 mini DVs and archived on 3 DVDs. External stern video was captured on 3 mini DVs and archived on 3 DVDs. Internal bow video was captured on 3 mini DVs and archived on 3 DVDs. Consistently high currents made controlling the sub and collecting difficult. The video quality was clear.