

Site Characterization

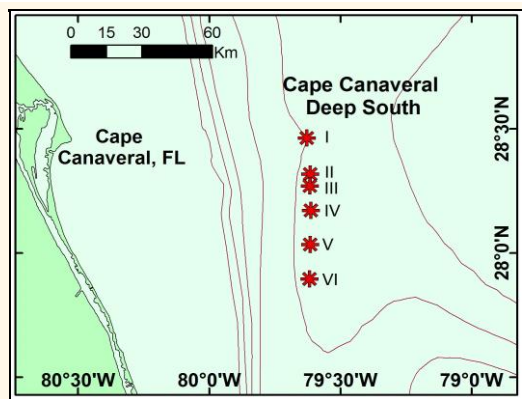
Cape Canaveral Deep South

OVERVIEW

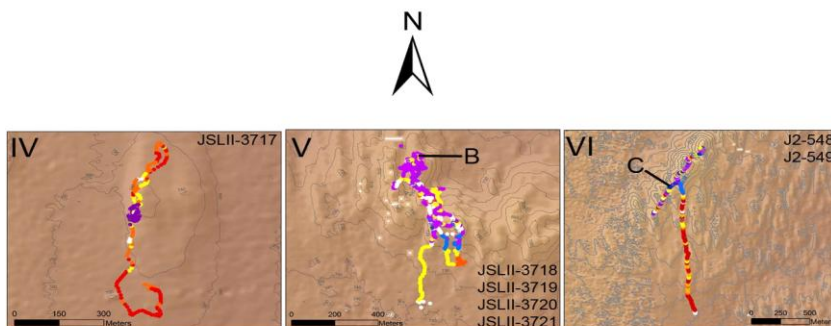
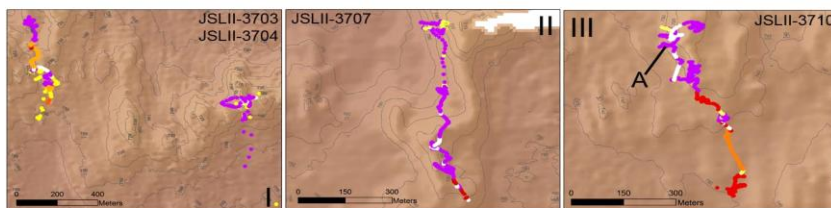
Total Dives 11

Depth Range (m): 633 to 746

GENERAL LOCATION



HABITAT CHARACTERIZATION MAPS



- Habitat**
- Soft Sediment
 - Sand, Rock - Barren
 - Sand, Rock - Fauna
 - Rubble
 - Tile Fish Burrows
 - Rock Ledge - Barren
 - Rock Ledge - Fauna
 - Pavement - Barren
 - Pavement - Fauna
 - Anthropogenic
 - Mixed Habitat
 - Hard Coral
 - Hard Coral - Fauna
 - No Video or Poor Video

DIVE SUMMARY FOR SITE

Dive Date	PI	Station	Method	Start-Time	End-Time	Start-Lat (N)	Start-Long (W)	End-Lat (N)	End-Long (W)
08-Aug-09	SW Ross	JSLII-3703	HOV	8:33	10:47	28° 27.819'	79° 37.598'	28° 27.802'	79° 37.657'
08-Aug-09	SW Ross	JSLII-3704	HOV	17:50	19:48	28° 27.868'	79° 38.203'	28° 28.050'	79° 38.272'
10-Aug-09	SW Ross	JSLII-3707	HOV	8:36	10:46	28° 19.092'	79° 36.886'	28° 19.426'	79° 36.926'
11-Aug-09	SW Ross	JSLII-3710	HOV	17:16	19:16	28° 16.271'	79° 37.002'	28° 16.555'	79° 37.059'
15-Aug-09	SW Ross	JSLII-3717	HOV	8:42	10:45	28° 09.547'	79° 36.782'	28° 09.682'	79° 36.789'
15-Aug-09	SW Ross	JSLII-3718	HOV	17:08	19:23	28° 02.088'	79° 36.867'	28° 02.492'	79° 36.862'
16-Aug-09	SW Ross	JSLII-3719	HOV	8:32	11:02	28° 02.200'	79° 36.748'	28° 02.483'	79° 36.873'
16-Aug-09	SW Ross	JSLII-3720	HOV	17:28	19:41	28° 02.204'	79° 36.780'	28° 02.326'	79° 36.991'
17-Aug-09	SW Ross	JSLII-3721	HOV	8:42	11:12	28° 02.303'	79° 36.759'	28° 02.469'	79° 36.887'
20-Nov-10	SW Ross, SD Brooke	J2-548	ROV	10:34	13:09	27° 53.245'	79° 36.933'	27° 53.935'	79° 36.982'
21-Nov-10	SW Ross, SD Brooke	J2-549	ROV	10:42	17:32	27° 53.735'	79° 37.050'	27° 54.097'	79° 36.899'

IMAGE GALLERY

* indicates image position is approximated

Image A: Hard Coral -
with Attached Fauna

28° 16.527' N, 79° 37.092' W

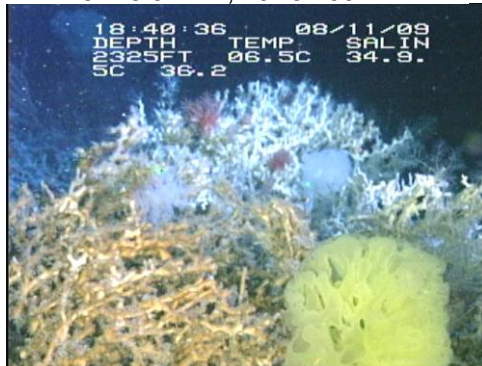


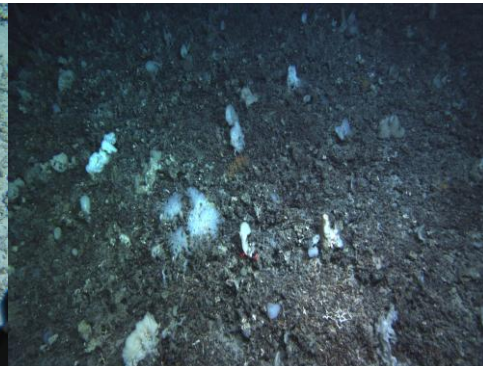
Image B: Rubble

28° 02.511' N, 79° 36.888' W



Image C: Mixed Habitat

27° 53.911' N, 79° 27.026' W



SITE OVERVIEW

AUTHOR SW Ross

DATE COMPILED 28-Feb-2013

The Cape Canaveral Deep South site was previously visited by S. Brooke, J. Reed, and S.W. Ross. Multibeam sonar data were collected for part of this region during the 2010 Deep-Sea Coral Research and Technology program cruise as well as other NOAA sponsored cruises. During the 2009 and 2010 DSCRT program cruises, nine and two dives, respectively, were completed at this site.

Compared with the Canaveral deep north site, this site, in comparable depths (> 630 m) to Canaveral deep north, seems more diverse in habitat and fauna. It contains comparable bioherms formed by *Lophelia pertusa*, with similar ridges and valleys. Most of the *L. pertusa* was dead. Sponges of many types, especially hexactinellids and demospongia, were very abundant. Other sessile fauna included *Enallopsammia* sp., *Anthomastus* sp., *Chrysogorgia* sp., Stylasteridae, isidid corals, gorgonians, hydroids, and *Madrepora oculata* (rare).

Although the sessile invertebrates were abundant and diverse at this site, mobile macrofauna was less abundant than in shallower sites of the region. Galatheoid squat lobsters, urchins, asteroids, octopus, crinoids, golden crabs, and a few shrimp comprised most of the macroinvertebrates observed. Fishes observed during dives at this site included rattails, synbranchid eels, *Chimaera* sp., *Laemonema* spp., blackbelly rosefish, skates, and *Lophiodes* sp.

As with the more northern deep Canaveral site, this was among the deepest coral habitats surveyed within the region. Depth probably accounts for a large part of the faunal difference between this site and others off the southeastern US.